



SUMMARY OF MARINE WEATHER FORECAST
COASTAL AREA OF BANGLADESH
DATE: 08 to 15 Mar 2025



Fleet forecast	Trough of low lies over West Bengal and adjoining area. Seasonal low lies over the South Bay.
Wind direction, speed	West/North-westerly 8 kts, (Temporary gusting up to 18 kts).
Wave height & sea state	Wave height: 0.1 to 1.1 m (Sea state:1 to 3).
Sea surface temperature	23°C - 27°C (May remain nearly unchanged).
Baro pressure	1009-1013 mb.
Rainfall	Partly cloudy sky over Bay of Bengal & adjoining area.
Fog	Light fog may occur over the coastal area during late night to early morning.

Outlook for 08 to 15 Mar 2025: Weather may remain dry with partly cloudy sky. Night and day temperature may rise.



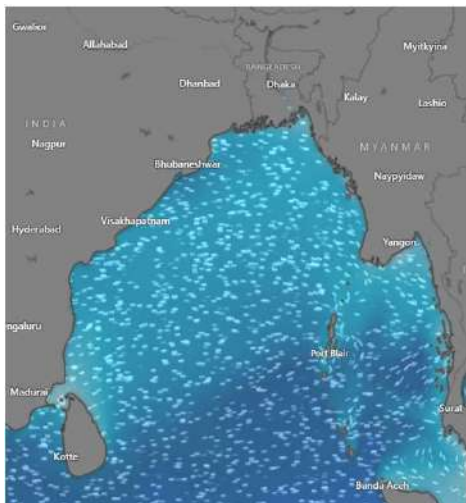
MARINE WEATHER FORECAST (08 to 15 Mar 2025)

PATENGA POINT (22° 12' N, 091° 38' E)

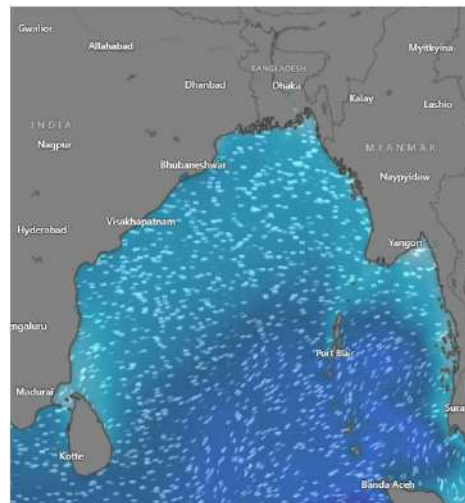


Date	Time	Air Temp (°C)		Sea Surface Temp (°C)	Baro Pressure (mbar)	Wind Direction	Wind Spd (kts)		Wave Ht (m)	Sea State	Humidity (%)	Prob of Rain (%)	Amount of Rain (mm)
		Max	Min				Gusting	Avg					
08-03-25 (Saturday)	0001	31	20	24	1009	NW	10	3	0.2	2	89	8	0.0
	0600			23	1013	SE	9	5	0.2	2	91	9	0.0
	1200			27	1010	SSW	13	8	0.2	2	54	3	0.0
	1800			25	1011	SW	12	6	0.2	2	74	5	0.0
09-03-25 (Sunday)	0001	31	20	24	1009	SW	9	2	0.2	2	87	7	0.0
	0600			23	1012	E	9	4	0.2	2	92	9	0.0
	1200			27	1010	NW	13	6	0.2	2	54	3	0.0
	1800			25	1011	NW	14	8	0.2	2	76	6	0.0
10-03-25 (Monday)	0001	31	21	24	1009	NNE	10	7	0.2	2	89	8	0.0
	0600			23	1012	NNE	9	5	0.2	2	92	9	0.0
	1200			27	1010	NNW	9	7	0.2	2	54	3	0.0
	1800			25	1011	NNW	12	5	0.2	2	75	6	0.0
11-03-25 (Tuesday)	0001	31	21	24	1010	NNE	10	6	0.2	2	89	8	0.0
	0600			23	1014	NNE	7	3	0.1	1	92	9	0.0
	1200			27	1011	W	12	9	0.2	2	54	2	0.0
	1800			25	1012	W	14	8	0.2	2	74	5	0.0

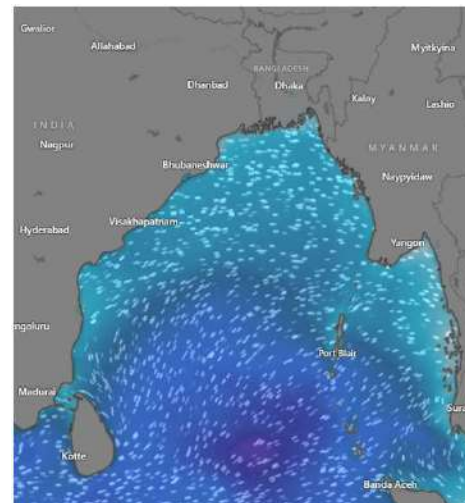
08 Mar 2025



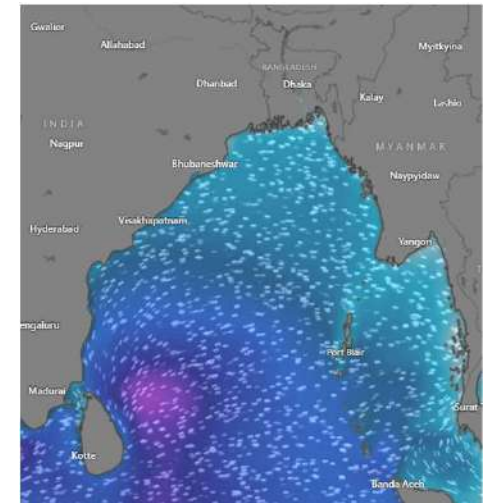
09 Mar 2025



10 Mar 2025



11 Mar 2025



Significant wave height (m)



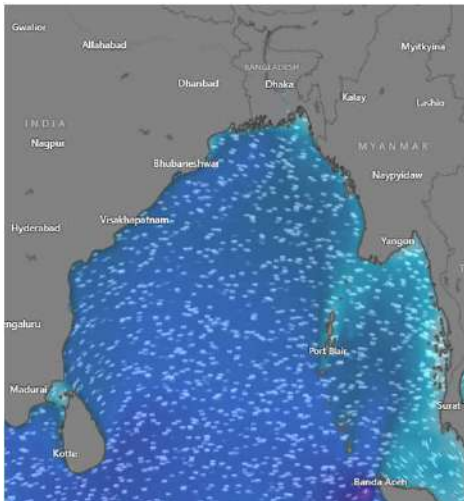
MARINE WEATHER FORECAST (08 to 15 Mar 2025)

PATENGA POINT (22° 12' N, 091° 38' E)

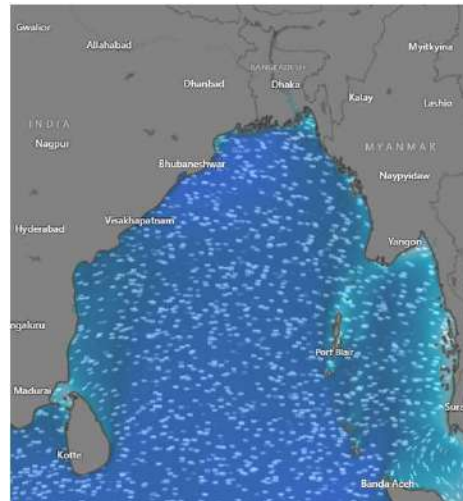


Date	Time	Air Temp (°C)		Sea Surface Temp (°C)	Baro Pressure (mbar)	Wind Direction	Wind Spd (kts)		Wave Ht (m)	Sea State	Humidity (%)	Prob of Rain (%)	Amount of Rain (mm)
		Max	Min				Gusting	Avg					
12-03-25 (Wednesday)	0001	31	21	25	1009	W	12	6	0.2	2	89	6	0.0
	0600			24	1013	E	10	7	0.3	2	92	8	0.0
	1200			27	1010	SSW	14	9	0.3	2	54	3	0.0
	1800			25	1012	SSW	13	8	0.3	2	75	7	0.0
13-03-25 (Thursday)	0001	31	21	25	1009	SSW	12	9	0.4	2	87	6	0.0
	0600			24	1013	SSE	14	6	0.4	2	91	7	0.0
	1200			27	1010	SSW	16	13	0.4	2	52	3	0.0
	1800			25	1012	SW	15	11	0.4	2	75	6	0.0
14-03-25 (Friday)	0001	31	21	25	1009	S	14	9	0.4	2	88	7	0.0
	0600			24	1012	SSE	13	6	0.4	2	90	8	0.0
	1200			27	1010	SSW	15	11	0.4	2	53	4	0.0
	1800			25	1011	SSW	14	10	0.4	2	76	5	0.0
15-03-25 (Saturday)	0001	31	21	25	1009	S	12	8	0.4	2	87	6	0.0
	0600			24	1013	SSE	13	9	0.4	2	92	7	0.0
	1200			27	1011	SW	13	10	0.4	2	54	3	0.0
	1800			25	1012	SW	12	9	0.4	2	75	5	0.0

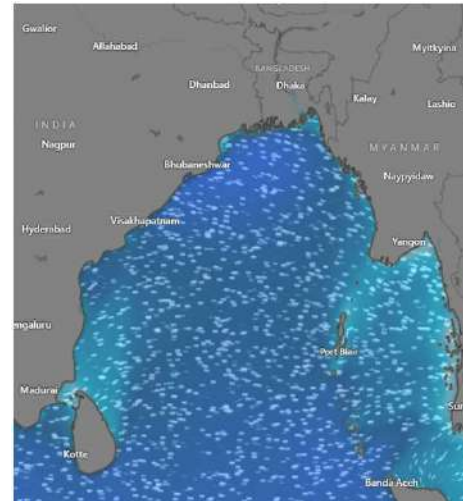
12 Mar 2025



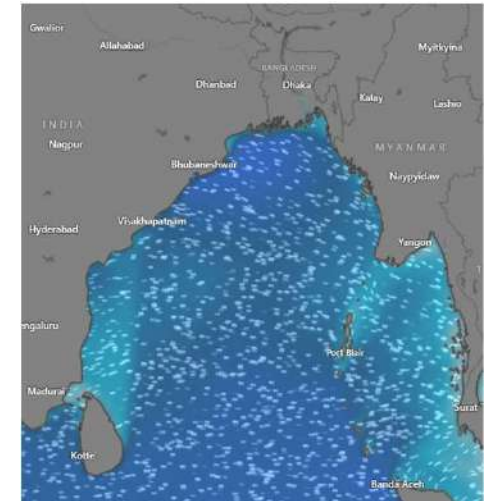
13 Mar 2025



14 Mar 2025



15 Mar 2025



Significant wave height (m)



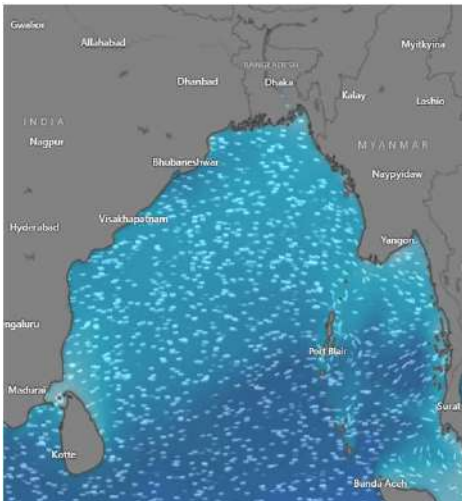
MARINE WEATHER FORECAST (08 to 15 Mar 2025)

ABEAM TO KUTUBDIA (21° 51' N, 091° 40' E)

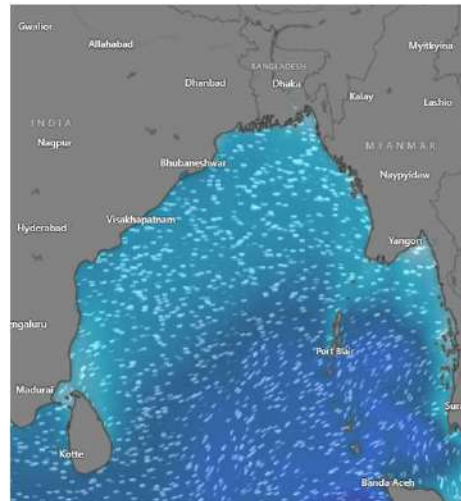


Date	Time	Air Temp (°C)		Sea Surface Temp (°C)	Baro Pressure (mbar)	Wind Direction	Wind Spd (kts)		Wave Ht (m)	Sea State	Humidity (%)	Prob of Rain (%)	Amount of Rain (mm)
		Max	Min				Gusting	Avg					
08-03-25 (Saturday)	0001	31	20	24	1009	W	7	3	0.3	2	87	6	0.0
	0600			23	1012	E	10	6	0.3	2	91	8	0.0
	1200			27	1010	SSW	9	6	0.2	2	54	3	0.0
	1800			25	1011	W	13	9	0.3	2	76	7	0.0
09-03-25 (Sunday)	0001	31	20	24	1009	W	8	3	0.2	2	89	6	0.0
	0600			23	1012	E	10	6	0.2	2	91	9	0.0
	1200			27	1010	W	7	4	0.2	2	52	2	0.0
	1800			25	1011	NW	14	10	0.3	2	76	5	0.0
10-03-25 (Monday)	0001	31	20	24	1009	N	12	8	0.3	2	88	6	0.0
	0600			23	1013	NNE	14	11	0.4	2	92	9	0.0
	1200			27	1010	NNW	12	6	0.4	2	54	2	0.0
	1800			25	1012	NNW	13	10	0.4	2	73	5	0.0
11-03-25 (Tuesday)	0001	31	20	24	1009	N	14	10	0.3	2	89	8	0.0
	0600			23	1013	SSE	11	5	0.4	2	92	9	0.0
	1200			27	1011	NW	11	9	0.4	2	54	4	0.0
	1800			25	1012	W	13	10	0.4	2	74	6	0.0

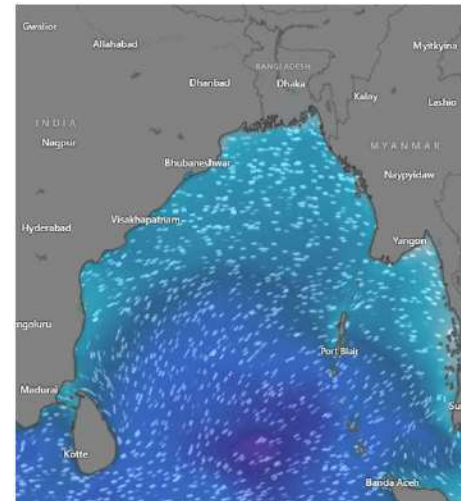
08 Mar 2025



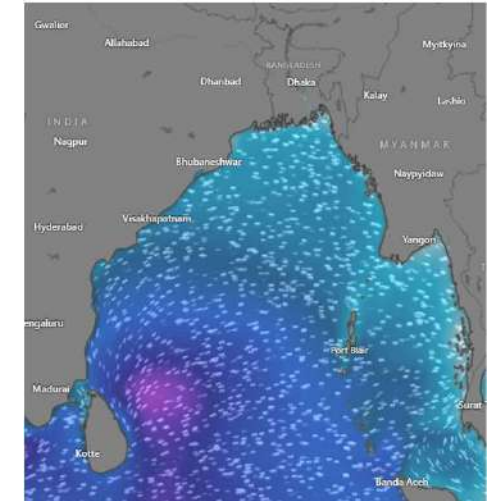
09 Mar 2025



10 Mar 2025



11 Mar 2025



Significant wave height (m)



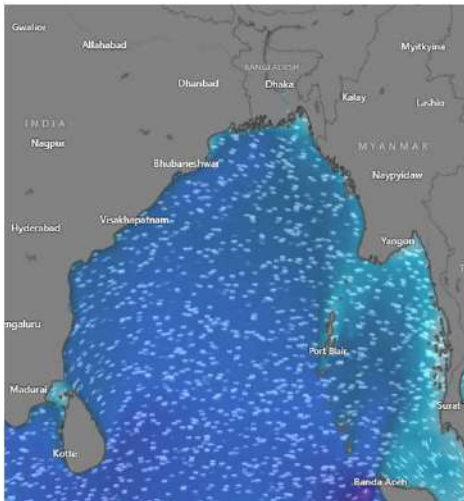
MARINE WEATHER FORECAST (08 to 15 Mar 2025)

ABEAM TO KUTUBDIA (21° 51' N, 091° 40' E)

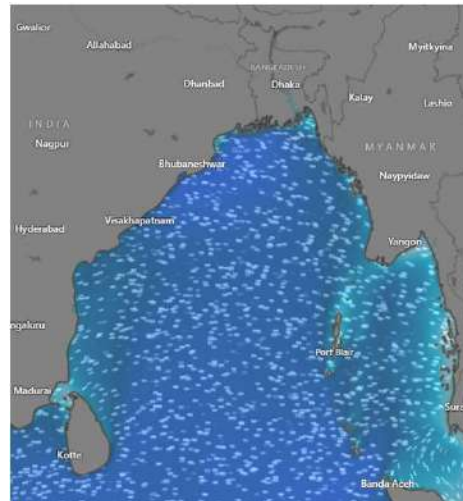


Date	Time	Air Temp (°C)		Sea Surface Temp (°C)	Baro Pressure (mbar)	Wind Direction	Wind Spd (kts)		Wave Ht (m)	Sea State	Humidity (%)	Prob of Rain (%)	Amount of Rain (mm)
		Max	Min				Gusting	Avg					
12-03-25 (Wednesday)	0001	31	20	24	1009	SSW	10	5	0.3	2	89	5	0.0
	0600			23	1012	S	12	6	0.4	2	92	7	0.0
	1200			27	1010	S	13	9	0.4	2	54	2	0.0
	1800			25	1011	SW	17	10	0.4	2	75	6	0.0
13-03-25 (Thursday)	0001	31	20	24	1009	SW	14	9	0.4	2	87	6	0.0
	0600			23	1012	SE	15	11	0.4	2	90	8	0.0
	1200			27	1010	SW	17	10	0.5	2	54	2	0.0
	1800			25	1011	SSW	16	12	0.5	2	75	7	0.0
14-03-25 (Friday)	0001	31	21	24	1009	SSW	15	12	0.4	2	88	7	0.0
	0600			23	1012	SE	16	13	0.4	2	90	9	0.0
	1200			27	1010	SW	12	10	0.4	2	54	4	0.0
	1800			25	1011	SSW	15	12	0.4	2	76	6	0.0
15-03-25 (Saturday)	0001	31	21	24	1009	SSW	14	10	0.4	2	87	8	0.0
	0600			23	1012	SE	15	12	0.4	2	90	9	0.0
	1200			27	1010	SSW	12	9	0.4	2	53	4	0.0
	1800			25	1011	SSW	14	11	0.4	2	75	7	0.0

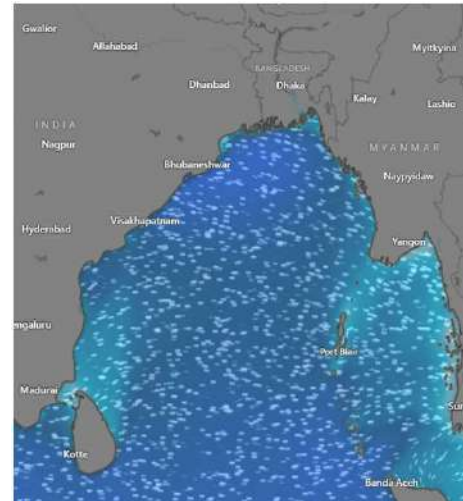
12 Mar 2025



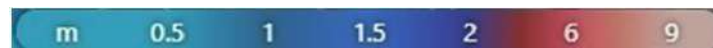
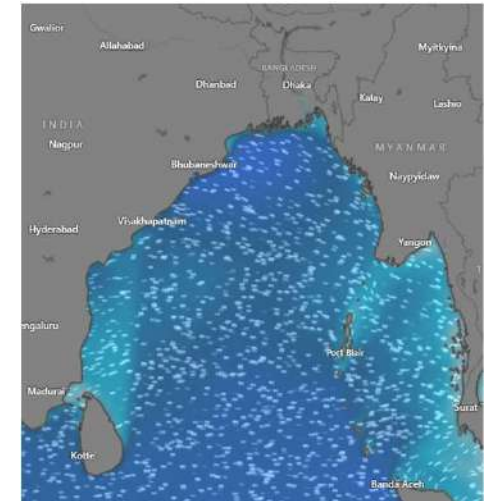
13 Mar 2025



14 Mar 2025



15 Mar 2025



Significant wave height (m)

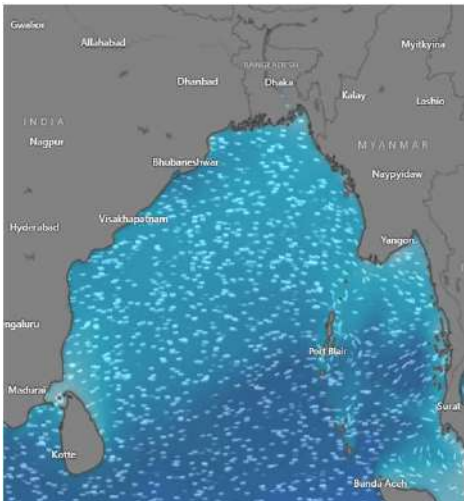


MARINE WEATHER FORECAST (08 to 15 Mar 2025) ABEAM TO ELEPHANT POINT (21° 11' N, 091° 52' E)

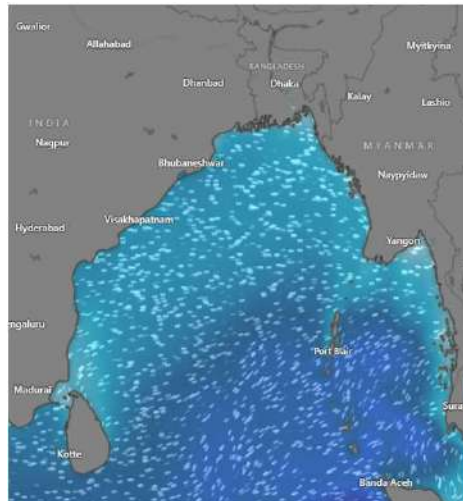


Date	Time	Air Temp (°C)		Sea Surface Temp (°C)	Baro Pressure (mbar)	Wind Direction	Wind Spd (kts)		Wave Ht (m)	Sea State	Humidity (%)	Prob of Rain (%)	Amount of Rain (mm)
		Max	Min				Gusting	Avg					
08-03-25 (Saturday)	0001	31	20	24	1009	W	10	4	0.5	2	88	7	0.0
	0600			23	1013	E	7	3	0.5	2	90	8	0.0
	1200			27	1010	SSW	6	4	0.4	2	54	3	0.0
	1800			25	1012	W	11	8	0.4	2	67	5	0.0
09-03-25 (Sunday)	0001	31	20	24	1009	SW	7	5	0.4	2	88	8	0.0
	0600			23	1013	SE	8	5	0.4	2	90	9	0.0
	1200			27	1010	SW	8	4	0.4	2	53	3	0.0
	1800			25	1012	NW	14	10	0.6	3	67	6	0.0
10-03-25 (Monday)	0001	31	21	24	1009	NNW	13	10	0.6	3	89	7	0.0
	0600			23	1013	NNE	16	12	0.7	3	92	8	0.0
	1200			27	1010	NNW	11	7	0.6	3	54	2	0.0
	1800			25	1012	NNW	16	12	0.6	3	68	5	0.0
11-03-25 (Tuesday)	0001	31	21	24	1009	N	14	11	0.6	3	89	7	0.0
	0600			23	1013	N	15	11	0.6	3	93	8	0.0
	1200			27	1010	NNW	14	12	0.6	3	55	3	0.0
	1800			25	1012	NW	17	13	0.7	3	67	6	0.0

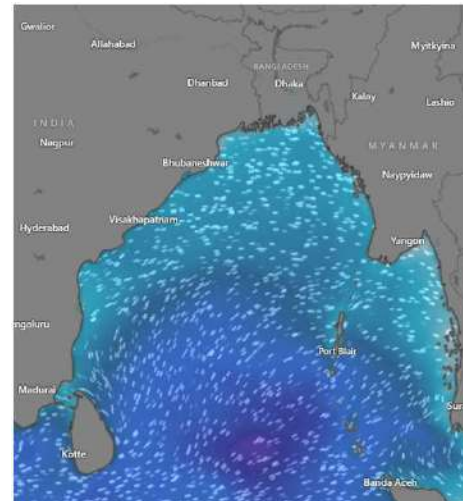
08 Mar 2025



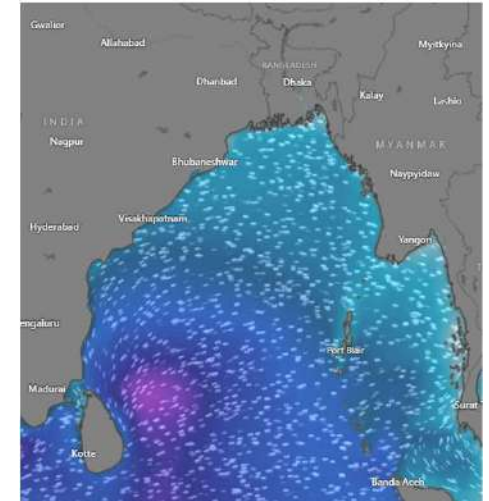
09 Mar 2025



10 Mar 2025



11 Mar 2025



Significant wave height (m)

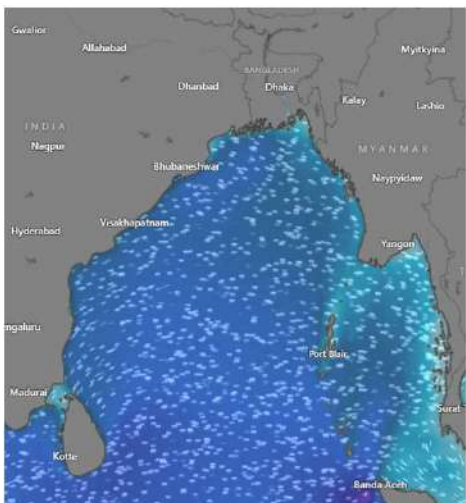


MARINE WEATHER FORECAST (08 to 15 Mar 2025) ABEAM TO ELEPHANT POINT (21° 11' N, 091° 52' E)

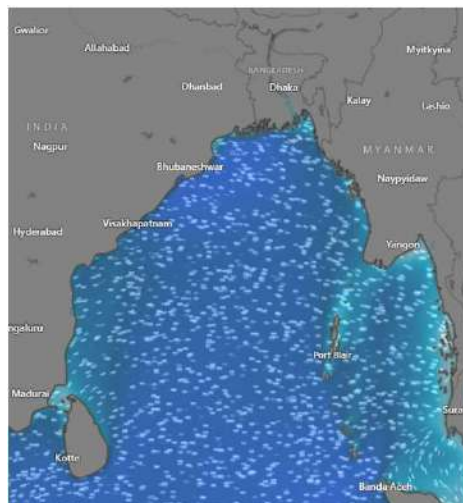


Date	Time	Air Temp (°C)		Sea Surface Temp (°C)	Baro Pressure (mbar)	Wind Direction	Wind Spd (kts)		Wave Ht (m)	Sea State	Humidity (%)	Prob of Rain (%)	Amount of Rain (mm)
		Max	Min				Gusting	Avg					
12-03-25 (Wednesday)	0001	31	21	24	1009	SSW	12	8	0.7	3	89	8	0.0
	0600			23	1013	SW	11	7	0.7	3	92	9	0.0
	1200			27	1010	SSW	10	6	0.8	3	54	3	0.0
	1800			25	1012	SSW	11	7	0.8	3	76	6	0.0
13-03-25 (Thursday)	0001	31	21	24	1009	SW	13	9	1.0	3	88	7	0.0
	0600			23	1013	SW	12	8	1.0	3	91	9	0.0
	1200			27	1010	SSW	10	7	1.0	3	54	3	0.0
	1800			25	1012	SSW	9	5	1.0	3	75	6	0.0
14-03-25 (Friday)	0001	31	21	24	1009	SSW	12	8	0.9	3	89	6	0.0
	0600			23	1013	SW	10	7	0.9	3	92	8	0.0
	1200			27	1010	SSW	9	6	0.8	3	54	3	0.0
	1800			25	1012	SSW	11	8	0.9	3	76	7	0.0
15-03-25 (Saturday)	0001	31	21	24	1009	SSW	11	7	0.9	3	89	8	0.0
	0600			23	1013	SW	9	6	0.8	3	93	9	0.0
	1200			27	1010	SSW	10	5	0.8	3	56	2	0.0
	1800			25	1012	SSW	12	9	0.9	3	75	6	0.0

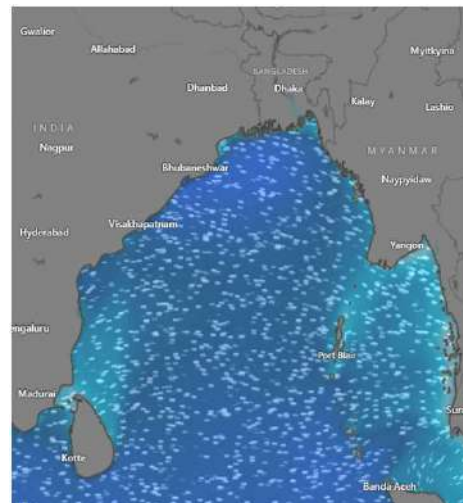
12 Mar 2025



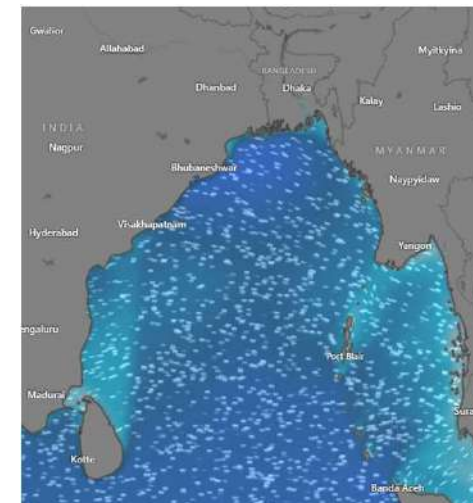
13 Mar 2025



14 Mar 2025



15 Mar 2025



Significant wave height (m)



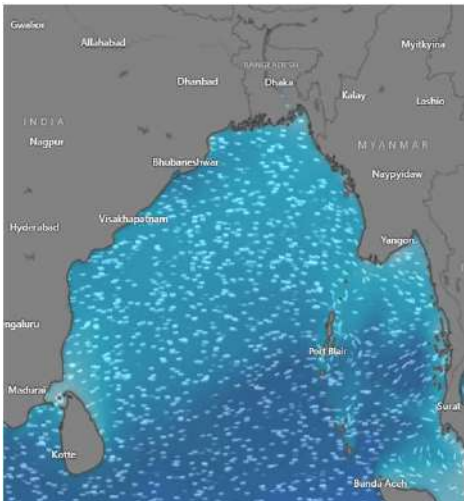
MARINE WEATHER FORECAST (08 to 15 Mar 2025)

ABEAM TO ST. MARTIN'S LIGHT HOUSE (20° 37' N, 092° 08' E)

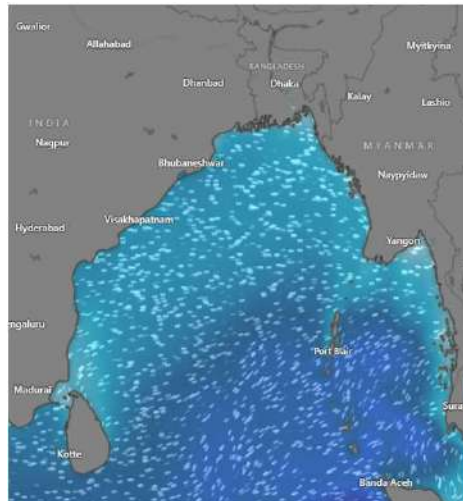


Date	Time	Air Temp (°C)		Sea Surface Temp (°C)	Baro Pressure (mbar)	Wind Direction	Wind Spd (kts)		Wave Ht (m)	Sea State	Humidity (%)	Prob of Rain (%)	Amount of Rain (mm)
		Max	Min				Gusting	Avg					
08-03-25 (Saturday)	0001	31	21	24	1009	NNW	11	7	0.5	2	88	7	0.0
	0600			23	1013	NNE	10	5	0.5	2	90	9	0.0
	1200			27	1010	SW	6	4	0.4	2	54	3	0.0
	1800			25	1012	W	12	9	0.5	2	75	6	0.0
09-03-25 (Sunday)	0001	31	21	24	1009	NNW	12	6	0.5	2	87	8	0.0
	0600			23	1013	NNW	7	4	0.4	2	92	9	0.0
	1200			27	1010	W	6	4	0.4	2	55	2	0.0
	1800			25	1012	NW	16	13	0.6	3	74	6	0.0
10-03-25 (Monday)	0001	31	21	24	1009	NNW	14	10	0.7	3	88	7	0.0
	0600			23	1013	NNE	15	9	0.6	3	92	9	0.0
	1200			27	1010	NNW	9	7	0.6	3	54	3	0.0
	1800			25	1012	NW	15	10	0.7	3	76	5	0.0
11-03-25 (Tuesday)	0001	31	21	24	1009	N	14	11	0.6	3	88	6	0.0
	0600			23	1013	N	16	10	0.7	3	91	8	0.0
	1200			27	1010	NNW	11	9	0.6	3	54	2	0.0
	1800			25	1012	NNW	18	14	0.8	3	74	6	0.0

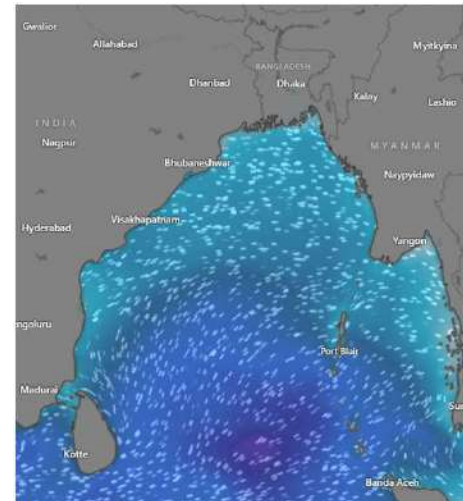
08 Mar 2025



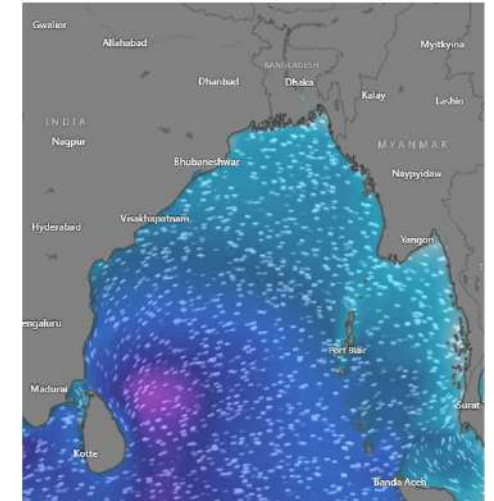
09 Mar 2025



10 Mar 2025



11 Mar 2025



Significant wave height (m)



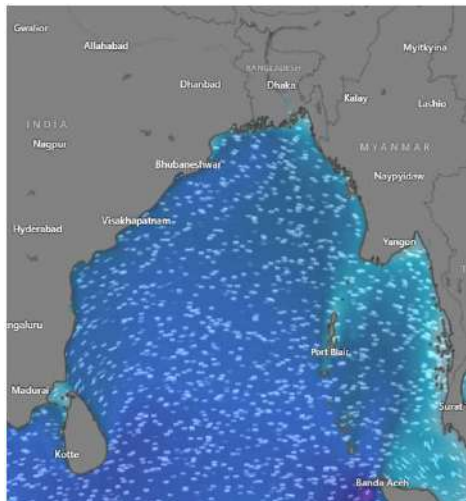
MARINE WEATHER FORECAST (08 to 15 Mar 2025)

ABEAM TO ST. MARTIN'S LIGHT HOUSE (20° 37' N, 092° 08' E)

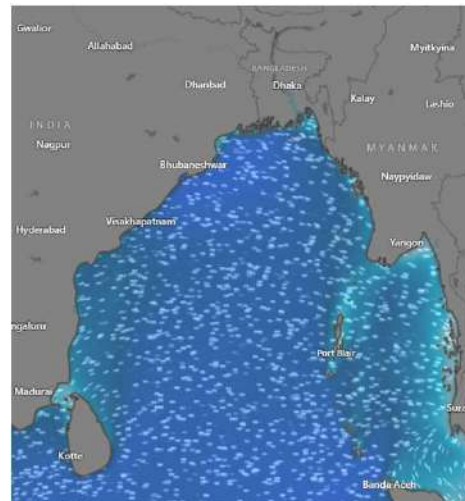


Date	Time	Air Temp (°C)		Sea Surface Temp (°C)	Baro Pressure (mbar)	Wind Direction	Wind Spd (kts)		Wave Ht (m)	Sea State	Humidity (%)	Prob of Rain (%)	Amount of Rain (mm)
		Max	Min				Gusting	Avg					
12-03-25 (Wednesday)	0001	31	21	24	1009	NNW	10	7	0.8	3	89	7	0.0
	0600			23	1013	SSE	9	5	0.8	3	90	8	0.0
	1200			27	1010	SW	12	8	0.8	3	54	3	0.0
	1800			25	1012	SW	13	12	0.9	3	75	6	0.0
13-03-25 (Thursday)	0001	31	21	24	1009	SW	14	6	1.0	3	88	6	0.0
	0600			23	1013	SSE	10	7	1.0	3	92	7	0.0
	1200			27	1010	SW	12	8	1.0	3	52	3	0.0
	1800			25	1012	SW	13	8	1.0	3	74	5	0.0
14-03-25 (Friday)	0001	31	21	24	1009	SW	11	7	0.9	3	89	7	0.0
	0600			23	1013	SSE	12	8	0.9	3	92	9	0.0
	1200			27	1010	SSW	10	6	1.0	3	54	3	0.0
	1800			25	1012	W	13	7	1.0	3	75	6	0.0
15-03-25 (Saturday)	0001	31	21	24	1009	SW	12	8	0.9	3	89	8	0.0
	0600			23	1013	SSE	12	9	0.9	3	93	9	0.0
	1200			27	1010	SSW	11	7	0.8	3	54	3	0.0
	1800			25	1012	SW	13	9	0.9	3	76	6	0.0

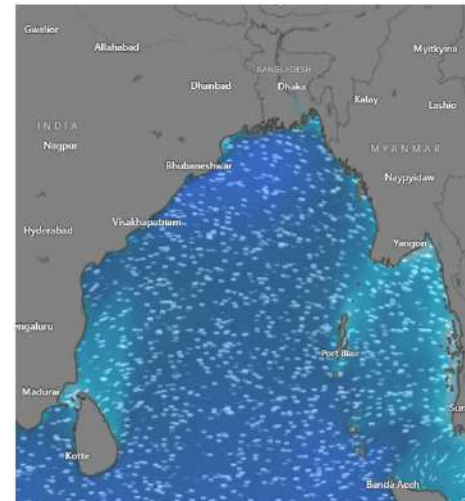
12 Mar 2025



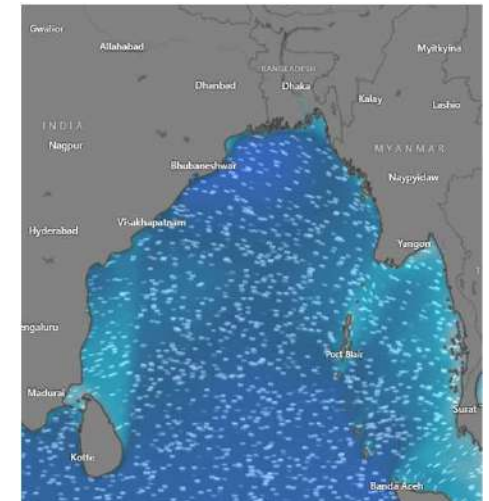
13 Mar 2025



14 Mar 2025



15 Mar 2025



Significant wave height (m)



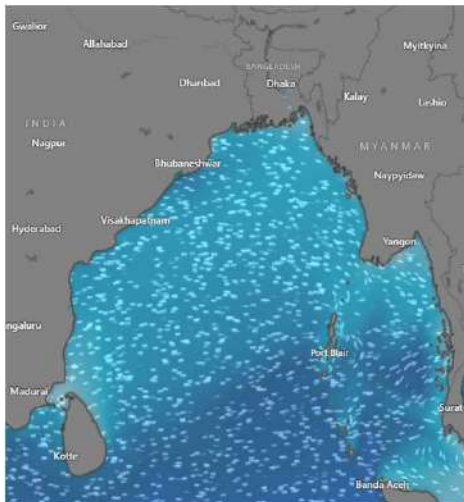
MARINE WEATHER FORECAST (08 to 15 Mar 2025)

PAYRA FAIRWAY (21° 22' N, 090° 6' E)

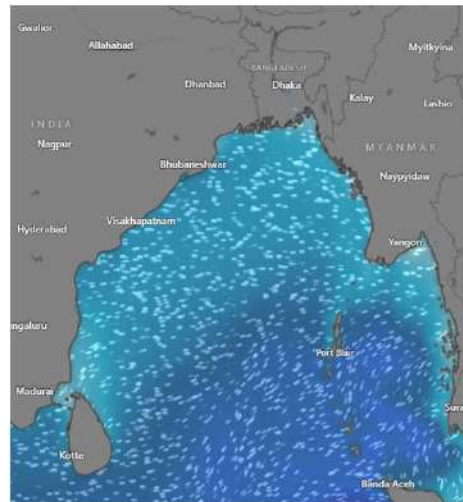


Date	Time	Air Temp (°C)		Sea Surface Temp (°C)	Baro Pressure (mbar)	Wind Direction	Wind Spd (kts)		Wave Ht (m)	Sea State	Humidity (%)	Prob of Rain (%)	Amount of Rain (mm)
		Max	Min				Gusting	Avg					
08-03-25 (Saturday)	0001	31	21	24	1009	W	11	6	0.6	3	89	6	0.0
	0600			23	1013	SW	8	7	0.5	2	92	9	0.0
	1200			26	1010	SW	9	8	0.5	2	54	3	0.0
	1800			25	1012	SSW	11	9	0.5	2	67	6	0.0
09-03-25 (Sunday)	0001	31	22	24	1009	SW	10	7	0.5	2	87	8	0.0
	0600			23	1013	SW	11	6	0.5	2	93	9	0.0
	1200			26	1010	S	7	5	0.5	2	54	3	0.0
	1800			25	1012	SW	9	6	0.5	2	67	8	0.0
10-03-25 (Monday)	0001	31	22	24	1009	SW	11	8	0.5	2	88	7	0.0
	0600			23	1013	SW	9	6	0.6	3	92	9	0.0
	1200			26	1010	S	10	7	0.6	3	54	3	0.0
	1800			25	1012	SW	6	5	0.6	3	72	6	0.0
11-03-25 (Tuesday)	0001	31	22	24	1009	SW	10	8	0.6	3	89	6	0.0
	0600			23	1013	SW	8	6	0.6	3	92	8	0.0
	1200			26	1010	SSW	9	6	0.6	3	54	3	0.0
	1800			25	1012	SW	9	7	0.6	3	75	6	0.0

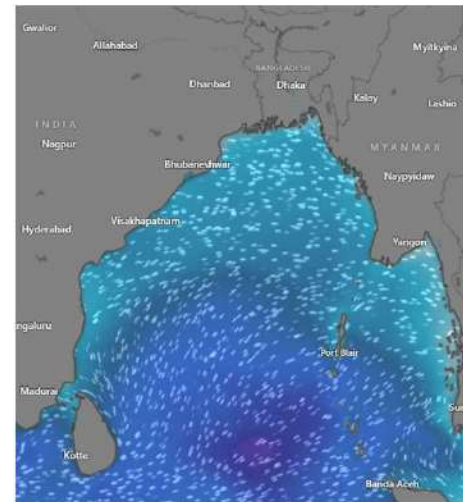
08 Mar 2025



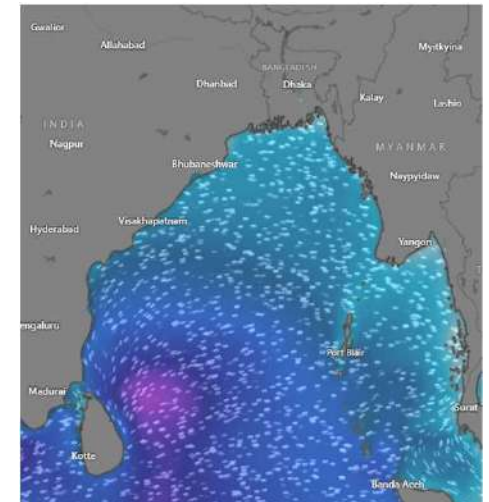
09 Mar 2025



10 Mar 2025



11 Mar 2025



Significant wave height (m)



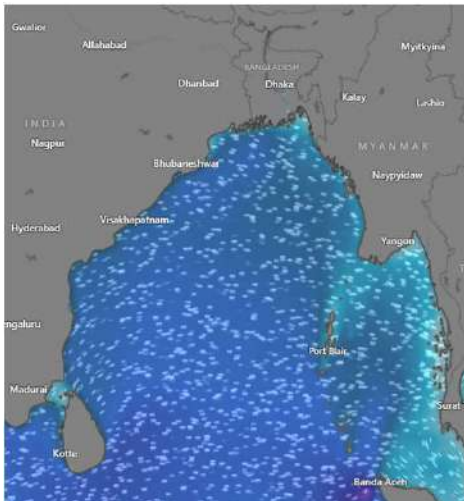
MARINE WEATHER FORECAST (08 to 15 Mar 2025)

PAYRA FAIRWAY (21° 22' N, 090° 6' E)

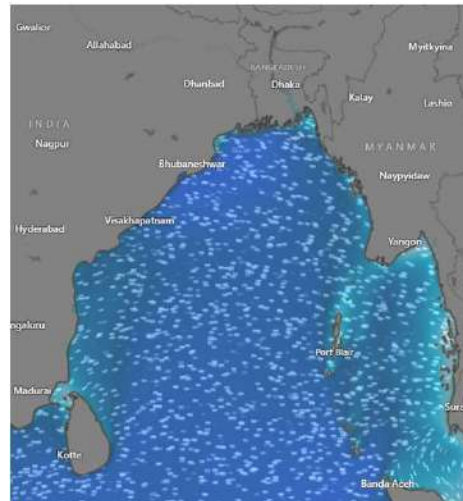


Date	Time	Air Temp (°C)		Sea Surface Temp (°C)	Baro Pressure (mbar)	Wind Direction	Wind Spd (kts)		Wave Ht (m)	Sea State	Humidity (%)	Prob of Rain (%)	Amount of Rain (mm)
		Max	Min				Gusting	Avg					
12-03-25 (Wednesday)	0001	31	21	24	1009	SW	14	8	0.8	3	89	8	0.0
	0600			23	1013	W	13	9	0.9	3	90	9	0.0
	1200			26	1010	SW	13	7	0.9	3	54	3	0.0
	1800			25	1012	SSW	16	10	1.0	3	75	6	0.0
13-03-25 (Thursday)	0001	31	21	24	1009	SSW	16	13	1.1	3	87	5	0.0
	0600			23	1013	SW	17	14	1.1	3	89	8	0.0
	1200			26	1010	SW	17	12	1.1	3	54	4	0.0
	1800			25	1012	SW	18	13	1.1	3	75	6	0.0
14-03-25 (Friday)	0001	31	21	24	1009	SW	17	12	1.0	3	88	6	0.0
	0600			23	1013	SW	18	14	1.1	3	91	7	0.0
	1200			26	1010	S	13	12	1.0	3	54	5	0.0
	1800			25	1012	SW	17	13	1.1	3	76	7	0.0
15-03-25 (Saturday)	0001	31	21	24	1009	SW	15	10	1.0	3	89	8	0.0
	0600			23	1013	SW	18	15	1.1	3	92	9	0.0
	1200			26	1010	SW	15	13	1.0	3	55	2	0.0
	1800			25	1012	SSW	16	12	1.1	3	75	5	0.0

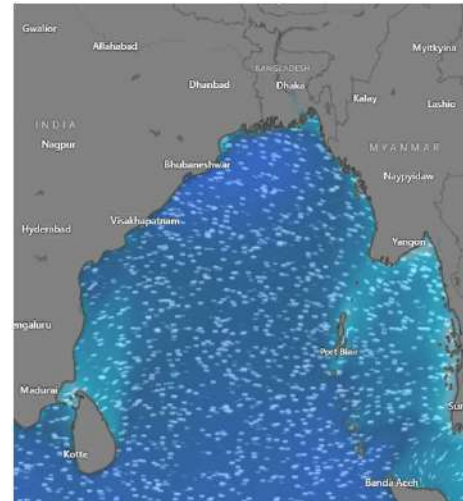
12 Mar 2025



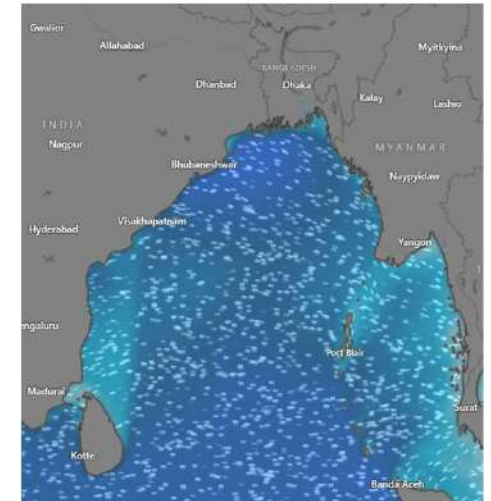
13 Mar 2025



14 Mar 2025



15 Mar 2025



Significant wave height (m)



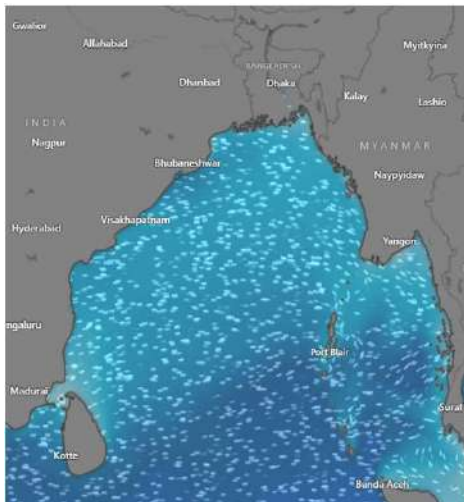
MARINE WEATHER FORECAST (08 to 15 Mar 2025)

MONGLA FAIRWAY (21° 26' N, 089° 34' E)

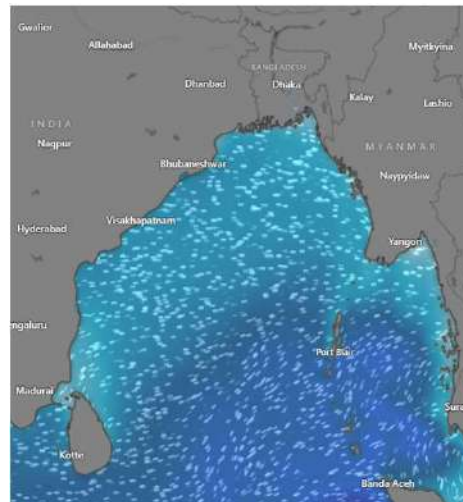


Date	Time	Air Temp (°C)		Sea Surface Temp (°C)	Baro Pressure (mbar)	Wind Direction	Wind Spd (kts)		Wave Ht (m)	Sea State	Humidity (%)	Prob of Rain (%)	Amount of Rain (mm)
		Max	Min				Gusting	Avg					
08-03-25 (Saturday)	0001	31	20	23	1009	SW	13	8	0.7	3	87	7	0.0
	0600			22	1013	SW	10	9	0.6	3	90	8	0.0
	1200			26	1010	SW	12	8	0.6	3	53	3	0.0
	1800			24	1012	S	15	11	0.6	3	66	6	0.0
09-03-25 (Sunday)	0001	31	20	23	1009	SW	11	10	0.7	3	87	6	0.0
	0600			22	1013	SW	13	9	0.6	3	90	8	0.0
	1200			26	1010	SSW	10	6	0.6	3	54	3	0.0
	1800			24	1012	SW	11	7	0.6	3	68	6	0.0
10-03-25 (Monday)	0001	31	20	23	1009	SW	11	9	0.7	3	88	7	0.0
	0600			22	1013	SW	14	10	0.7	3	90	9	0.0
	1200			26	1010	SSW	12	9	0.7	3	52	3	0.0
	1800			24	1012	SW	10	7	0.6	3	64	5	0.0
11-03-25 (Tuesday)	0001	31	20	23	1009	SW	12	9	0.6	3	89	8	0.0
	0600			22	1013	SSW	13	10	0.7	3	92	9	0.0
	1200			26	1010	SSW	14	9	0.6	3	54	4	0.0
	1800			24	1012	SW	11	7	0.6	3	67	5	0.0

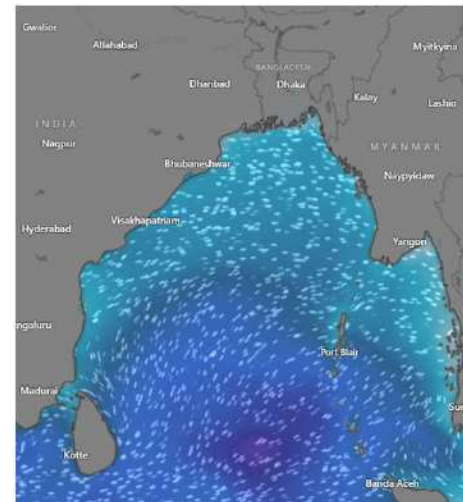
08 Mar 2025



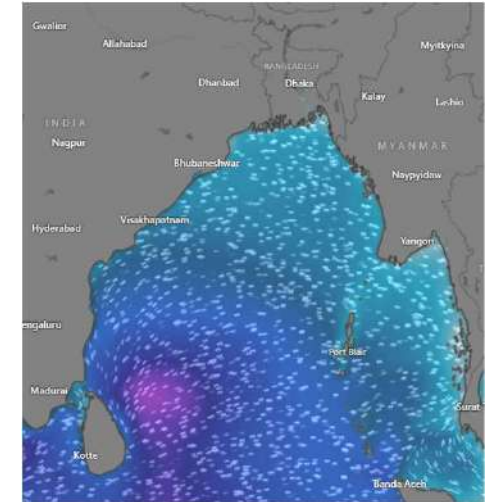
09 Mar 2025



10 Mar 2025



11 Mar 2025



Significant wave height (m)



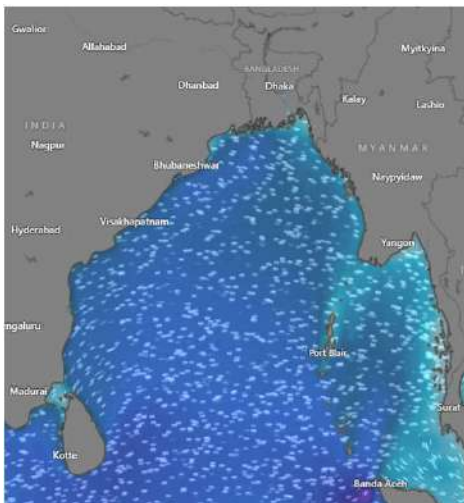
MARINE WEATHER FORECAST (08 to 15 Mar 2025)

MONGLA FAIRWAY (21° 26' N, 089° 34' E)

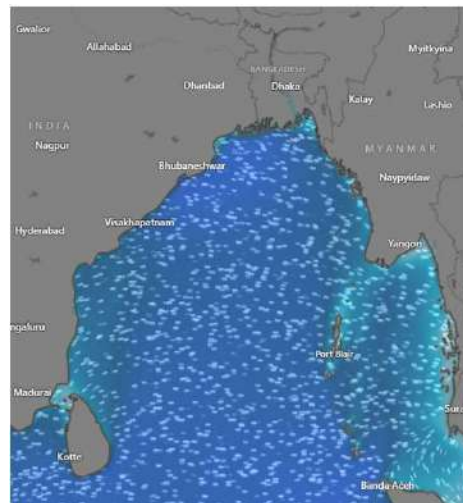


Date	Time	Air Temp (°C)		Sea Surface Temp (°C)	Baro Pressure (mbar)	Wind Direction	Wind Spd (kts)		Wave Ht (m)	Sea State	Humidity (%)	Prob of Rain (%)	Amount of Rain (mm)
		Max	Min				Gusting	Avg					
12-03-25 (Wednesday)	0001	31	20	24	1009	SW	13	9	0.9	3	88	7	0.0
	0600			23	1013	W	15	11	0.9	3	90	9	0.0
	1200			27	1010	SW	12	8	0.8	3	57	3	0.0
	1800			25	1012	SW	13	9	0.9	3	76	5	0.0
13-03-25 (Thursday)	0001	31	20	24	1009	SW	12	7	0.9	3	89	6	0.0
	0600			23	1013	SW	14	10	0.9	3	92	9	0.0
	1200			27	1010	S	10	7	0.8	3	54	2	0.0
	1800			25	1012	SW	12	9	0.9	3	75	6	0.0
14-03-25 (Friday)	0001	31	20	24	1009	SW	12	8	0.9	3	87	6	0.0
	0600			23	1013	SW	14	11	0.9	3	90	8	0.0
	1200			27	1010	SSW	11	7	0.8	3	52	2	0.0
	1800			25	1012	SW	12	8	0.9	3	73	5	0.0
15-03-25 (Saturday)	0001	31	20	24	1009	SW	13	9	0.9	3	88	7	0.0
	0600			23	1013	SW	14	10	0.9	3	92	9	0.0
	1200			27	1010	SSW	10	7	0.8	3	54	3	0.0
	1800			25	1012	SSW	9	6	0.9	3	74	6	0.0

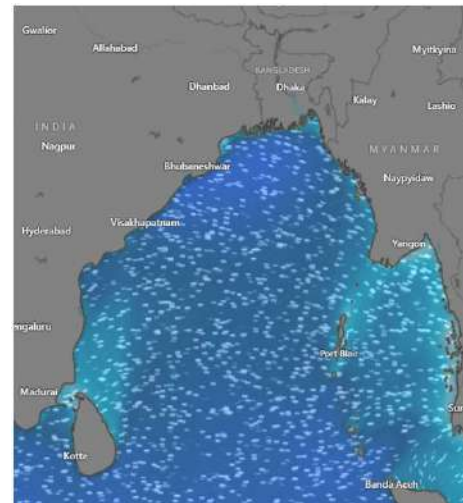
12 Mar 2025



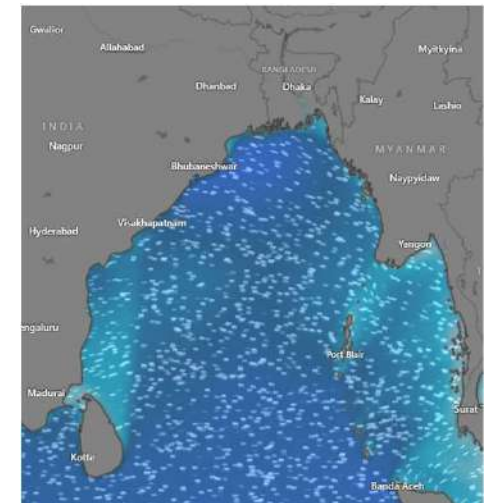
13 Mar 2025



14 Mar 2025



15 Mar 2025



Significant wave height (m)



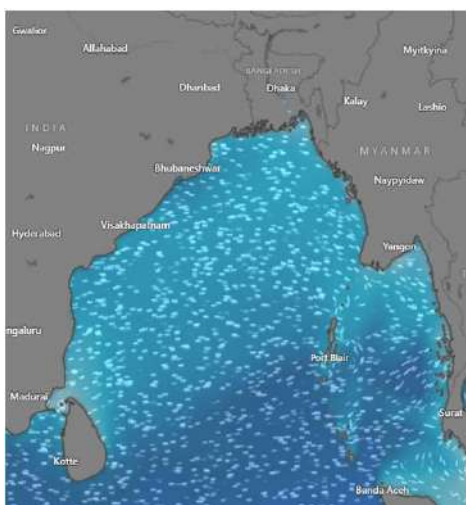
MARINE WEATHER FORECAST (08 to 15 Mar 2025)

OUTER EEZ (18° 48' N, 090° 30' E)

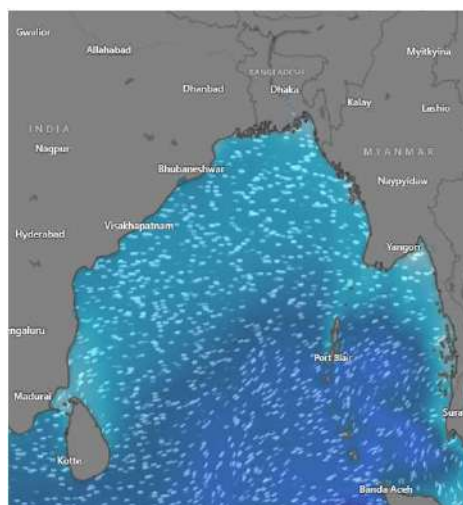


Date	Time	Air Temp (°C)		Sea Surface Temp (°C)	Baro Pressure (mbar)	Wind Direction	Wind Spd (kts)		Wave Ht (m)	Sea State	Humidity (%)	Prob of Rain (%)	Amount of Rain (mm)
		Max	Min				Gusting	Avg					
08-03-25 (Saturday)	0001	31	21	24	1009	NW	8	7	0.6	3	89	7	0.0
	0600			23	1013	SSW	6	6	0.6	3	92	9	0.0
	1200			27	1010	SW	8	5	0.5	2	54	2	0.0
	1800			25	1012	SSW	5	6	0.5	2	66	5	0.0
09-03-25 (Sunday)	0001	31	21	24	1009	S	10	8	0.6	3	88	7	0.0
	0600			23	1013	NNE	7	4	0.5	2	92	9	0.0
	1200			27	1010	SSE	8	5	0.5	2	52	3	0.0
	1800			25	1012	NNE	9	6	0.6	3	66	5	0.0
10-03-25 (Monday)	0001	31	21	24	1009	SW	12	8	0.6	3	87	7	0.0
	0600			23	1013	NE	9	5	0.6	3	91	9	0.0
	1200			27	1010	SSW	10	6	0.7	3	52	3	0.0
	1800			25	1012	NNW	7	4	0.6	3	66	5	0.0
11-03-25 (Tuesday)	0001	31	21	24	1009	SW	11	7	0.7	3	89	8	0.0
	0600			23	1013	NE	9	6	0.6	3	92	9	0.0
	1200			27	1010	SSW	10	5	0.7	3	54	2	0.0
	1800			25	1012	NW	8	6	0.6	3	67	6	0.0

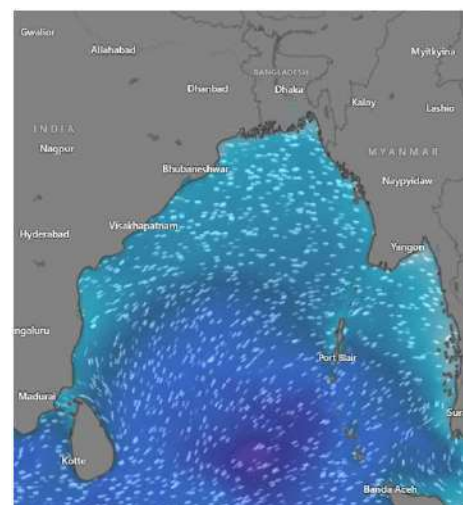
08 Mar 2025



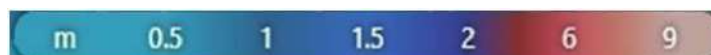
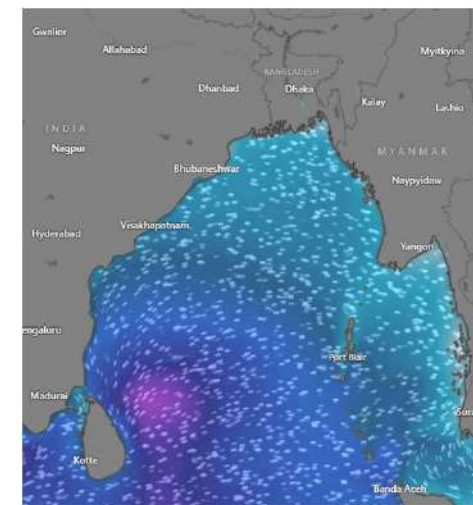
09 Mar 2025



10 Mar 2025



11 Mar 2025



Significant wave height (m)



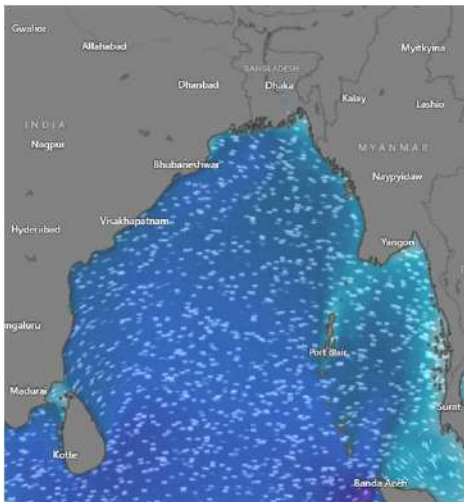
MARINE WEATHER FORECAST (08 to 15 Mar 2025)

OUTER EEZ (18° 48' N, 090° 30' E)

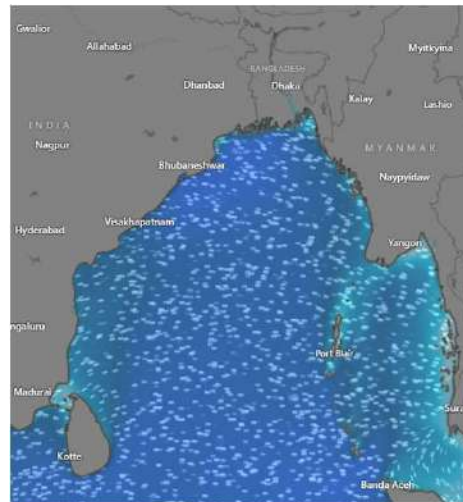


Date	Time	Air Temp (°C)		Sea Surface Temp (°C)	Baro Pressure (mbar)	Wind Direction	Wind Spd (kts)		Wave Ht (m)	Sea State	Humidity (%)	Prob of Rain (%)	Amount of Rain (mm)
		Max	Min				Gusting	Avg					
12-03-25 (Wednesday)	0001	31	21	25	1009	W	11	9	0.9	3	89	5	0.0
	0600			24	1013	W	12	8	0.9	3	90	7	0.0
	1200			27	1010	W	11	6	1.0	3	54	3	0.0
	1800			26	1012	SW	12	9	1.0	3	75	6	0.0
13-03-25 (Thursday)	0001	31	21	25	1009	SW	13	10	1.0	3	87	6	0.0
	0600			24	1013	SSW	16	12	1.1	3	89	8	0.0
	1200			27	1010	SW	15	11	1.1	3	52	3	0.0
	1800			26	1012	SSW	14	10	1.1	3	76	5	0.0
14-03-25 (Friday)	0001	31	21	25	1009	SSW	14	9	1.0	3	89	7	0.0
	0600			24	1013	SW	16	10	1.1	3	90	9	0.0
	1200			27	1010	SSW	14	8	1.1	3	53	2	0.0
	1800			26	1012	SW	16	10	1.1	3	75	6	0.0
15-03-25 (Saturday)	0001	31	21	25	1009	SW	14	10	1.1	3	89	8	0.0
	0600			24	1013	SW	9	7	1.0	3	92	9	0.0
	1200			27	1010	SSW	13	9	1.1	3	54	3	0.0
	1800			26	1012	SW	12	8	1.1	3	76	5	0.0

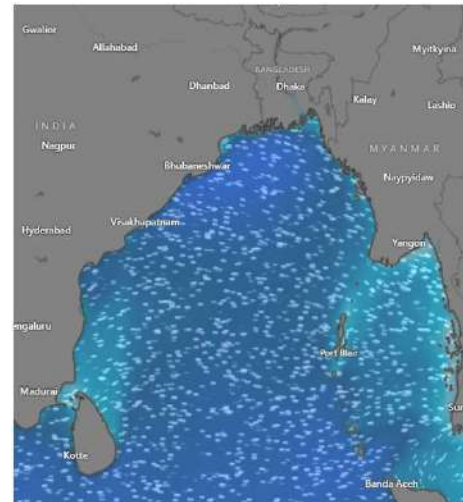
12 Mar 2025



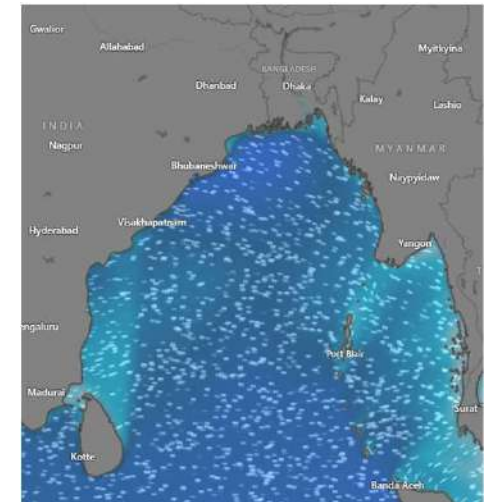
13 Mar 2025



14 Mar 2025



15 Mar 2025



Significant wave height (m)



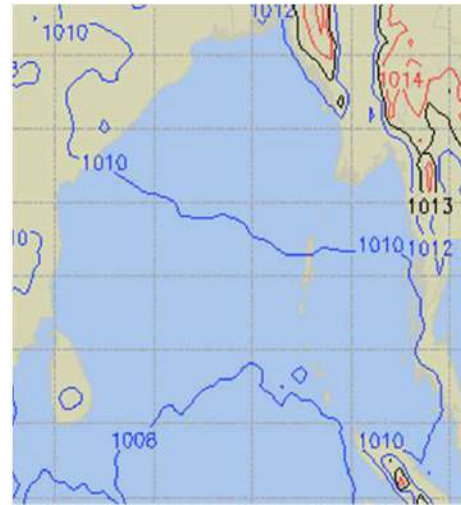
PREDICTED SURFACE PRESSURE FORECAST (08 to 14 Mar 2025)



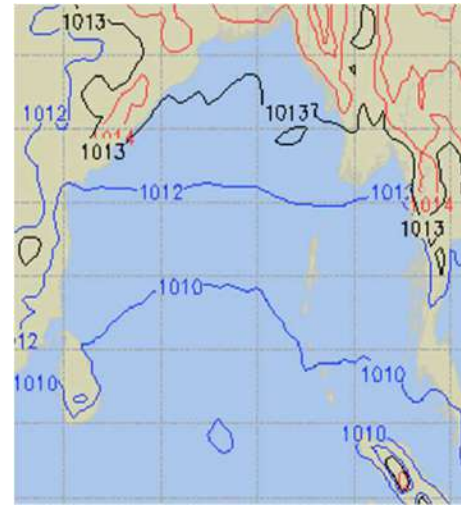
08 Mar 2025



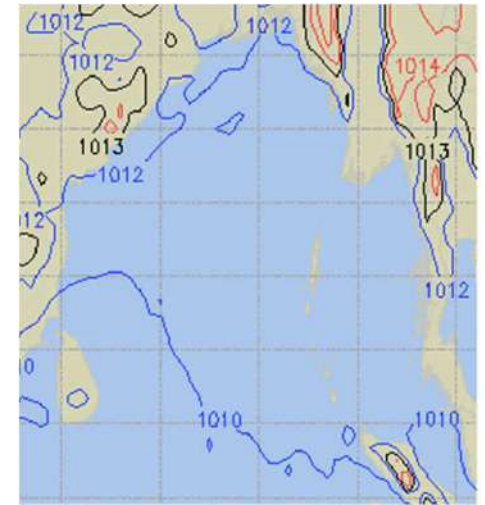
09 Mar 2025



10 Mar 2025



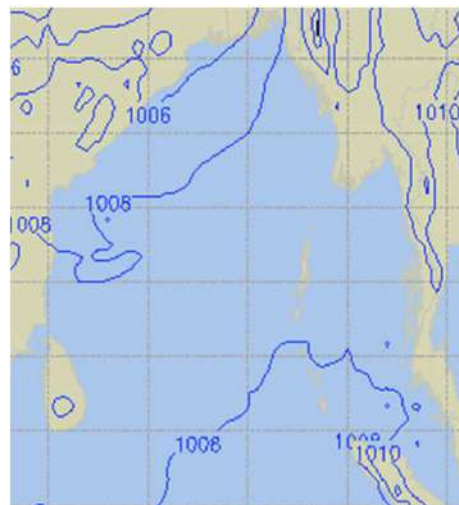
11 Mar 2025



12 Mar 2025



13 Mar 2025



14 Mar 2025

