



SUMMARY OF MARINE WEATHER FORECAST
COASTAL AREA OF BANGLADESH
DATE: 07 to 14 Oct 2024



Fleet forecast	Monsoon is moderate over North Bay.
Wind direction, speed	South/south-westerly 6 kts, (Temporary gusting up to 19 kts).
Wave height & sea state	Wave height: 0.1 to 1.3 m (Sea state:1 to 4).
Sea surface temperature	26°C - 29°C (May remain nearly unchanged).
Baro pressure	1007 - 1014 mb
Rainfall	Light to moderate rain/thunder showers over Bay of Bengal & adjoining area.
Outlook for 07 to 14 Oct 2024: Rainfall activity is likely to decrease at the end of said period.	

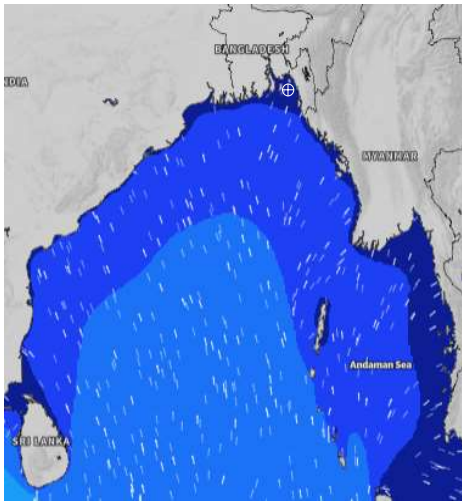


MARINE WEATHER FORECAST (07 to 14 Oct 2024) NEAR AUTHORITY BUOY (22° 12' N, 091° 38' E)

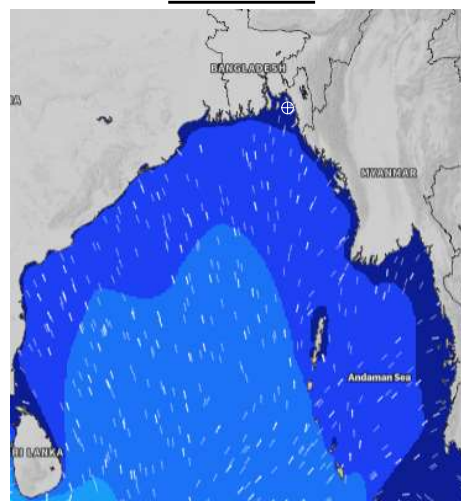


Date	Time	Air Temp (°C)		Sea Surface Temp (°C)	Baro Pressure (mbar)	Wind Direction	Wind Spd (kts)		Wave Ht (m)	Sea State	Humidity (%)	Prob of Rain
		Max	Min				Max	Avg				
07-10-24 (Monday)	0001	32	26	28	1012	SSE	8	7	0.1	1	93	24% (0.0 mm)
	0600			26	1013	ESE	7	6	0.1	1	95	10% (0.0 mm)
	1200			28	1013	WNW	4	3	0.1	1	73	30% (0.1 mm)
	1800			28	1013	WNW	6	5	0.1	1	81	11% (0.0 mm)
08-10-24 (Tuesday)	0001	32	26	28	1012	WNW	4	3	0.1	1	91	10% (0.0 mm)
	0600			26	1012	ENE	5	4	0.1	1	95	31% (0.2 mm)
	1200			28	1012	WSW	6	5	0.1	1	72	37% (0.2 mm)
	1800			29	1011	WSW	7	6	0.1	1	81	10% (0.0 mm)
09-10-24 (Wednesday)	0001	31	26	28	1011	SE	4	3	0.1	1	91	40% (0.3 mm)
	0600			27	1011	ESE	5	4	0.1	1	95	61% (0.5 mm)
	1200			28	1010	WSW	8	7	0.1	1	75	49% (0.4 mm)
	1800			29	1009	SSW	5	4	0.1	1	84	32% (0.2 mm)
10-10-24 (Thursday)	0001	30	25	28	1009	S	6	5	0.1	1	91	38% (0.2mm)
	0600			27	1009	S	7	6	0.1	1	94	46% (0.4 mm)
	1200			28	1009	SSW	7	6	0.1	1	76	49% (0.5 mm)
	1800			29	1008	WSW	9	8	0.1	1	84	20% (0.0 mm)

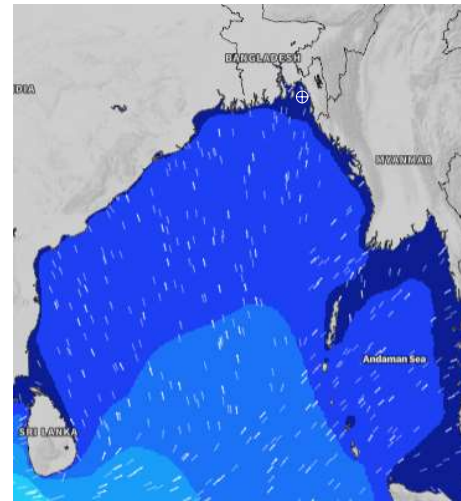
07 Oct 2024



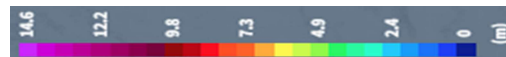
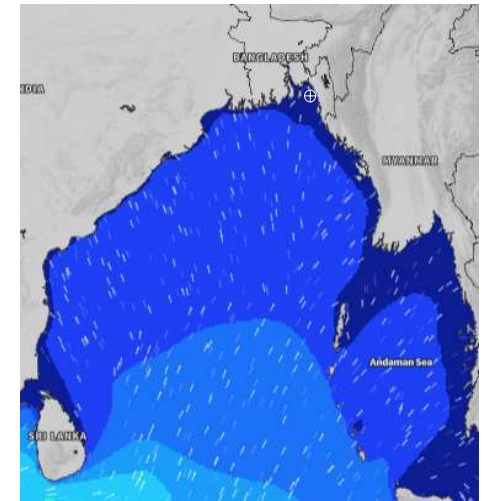
08 Oct 2024



09 Oct 2024



10 Oct 2024



Significant wave height (m)

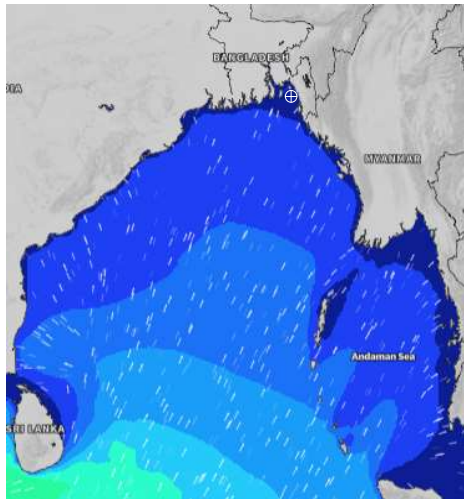


MARINE WEATHER FORECAST (07 to 14 Oct 2024) NEAR AUTHORITY BUOY (22° 12' N, 091° 38' E)

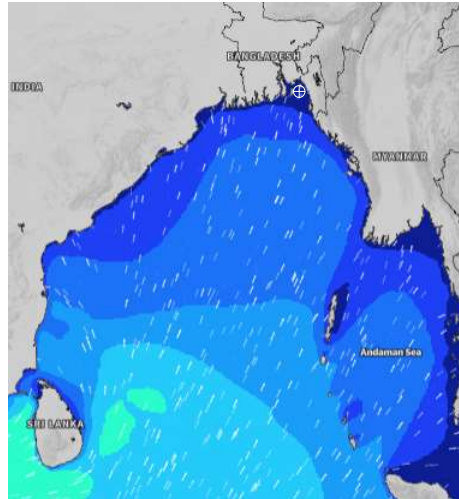


Date	Time	Air Temp (°C)		Sea Surface Temp (°C)	Baro Pressure (mbar)	Wind Direction	Wind Spd (kts)		Wave Ht (m)	Sea State	Humidity (%)	Prob of Rain
		Max	Min				Max	Avg				
11-10-24 (Friday)	0001	31	26	28	1010	SE	4	3	0.1	1	91	34% (0.2 mm)
	0600			26	1009	SE	7	6	0.1	1	93	63% (0.5 mm)
	1200			28	1010	SW	7	6	0.1	1	75	35% (0.2 mm)
	1800			28	1007	SW	6	5	0.1	1	82	21% (0.0 mm)
12-10-24 (Saturday)	0001	31	25	28	1010	S	6	5	0.1	1	91	40% (0.3 mm)
	0600			28	1010	S	11	10	0.1	1	94	37% (0.3 mm)
	1200			28	1011	SSW	5	4	0.1	1	76	42% (0.4 mm)
	1800			28	1008	WSW	4	3	0.1	1	82	15% (0.0 mm)
13-10-24 (Sunday)	0001	32	25	28	1010	SSW	3	2	0.1	1	91	40% (0.4 mm)
	0600			26	1011	ESE	6	5	0.1	1	94	44% (0.4 mm)
	1200			28	1011	WSW	6	5	0.1	1	76	43% (0.4 mm)
	1800			29	1008	W	7	6	0.1	1	82	24% (0.1 mm)
14-10-24 (Monday)	0001	32	25	27	1010	ENE	5	4	0.1	1	92	50% (0.5 mm)
	0600			26	1011	NE	7	6	0.1	1	92	57% (0.5 mm)
	1200			29	1010	NW	10	10	0.2	2	76	39% (0.3 mm)
	1800			29	1008	NW	19	17	0.4	2	81	24% (0.0 mm)

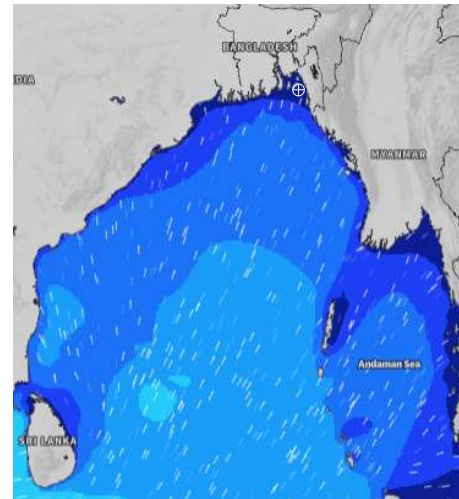
11 Oct 2024



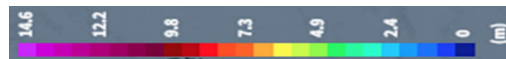
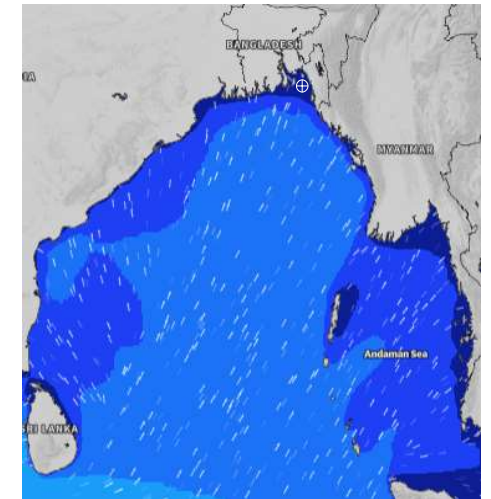
12 Oct 2024



13 Oct 2024



14 Oct 2024



Significant wave height (m)

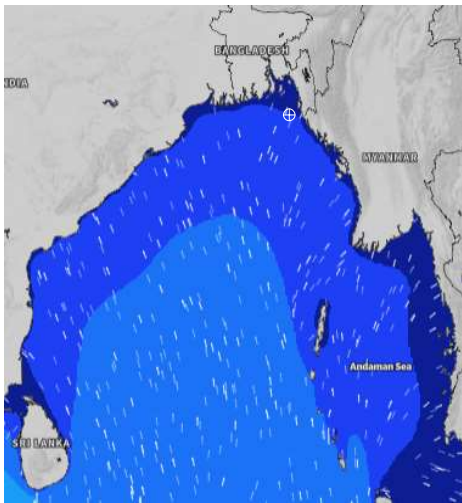


MARINE WEATHER FORECAST (07 to 14 Oct 2024) 20 NM WEST OF ELEPHANT POINT (21° 10' N, 091° 42' E)

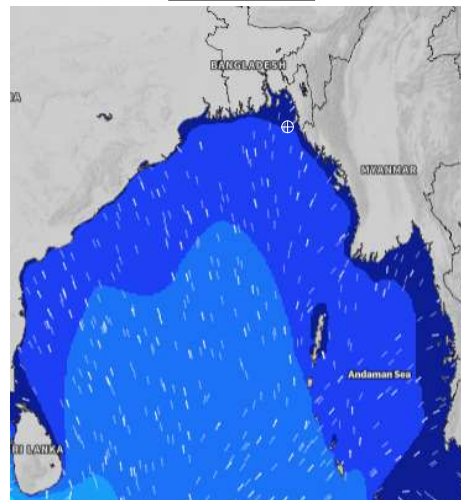


Date	Time	Air Temp (°C)		Sea Surface Temp (°C)	Baro Pressure (mbar)	Wind Direction	Wind Spd (kts)		Wave Ht (m)	Sea State	Humidity (%)	Prob of Rain
		Max	Min				Max	Avg				
07-10-24 (Monday)	0001	31	26	29	1012	SE	7	6	0.7	3	92	10% (0.0 mm)
	0600			28	1012	ESE	9	8	0.6	3	95	11% (0.0 mm)
	1200			28	1013	S	4	3	0.6	3	72	12% (0.0 mm)
	1800			29	1011	W	6	5	0.6	3	83	12% (0.0 mm)
08-10-24 (Tuesday)	0001	31	26	29	1012	WNW	4	3	0.6	3	90	10% (0.0 mm)
	0600			28	1012	NE	5	4	0.6	3	93	11% (0.0 mm)
	1200			28	1012	WNW	5	4	0.6	3	73	38% (0.2 mm)
	1800			29	1011	WNW	8	7	0.6	3	83	10% (0.0 mm)
09-10-24 (Wednesday)	0001	31	26	28	1011	W	5	4	0.6	3	90	10% (0.0 mm)
	0600			28	1011	WNW	4	3	0.5	2	93	10% (0.0 mm)
	1200			29	1011	W	7	6	0.5	2	76	48% (0.4 mm)
	1800			29	1009	WNW	7	6	0.5	2	83	11% (0.0 mm)
10-10-24 (Thursday)	0001	31	25	28	1010	W	6	5	0.5	2	89	34% (0.2 mm)
	0600			28	1010	W	5	4	0.5	2	93	41% (0.2 mm)
	1200			29	1010	W	8	7	0.6	3	75	43% (0.3 mm)
	1800			29	1008	W	9	8	0.6	3	86	10% (0.0 mm)

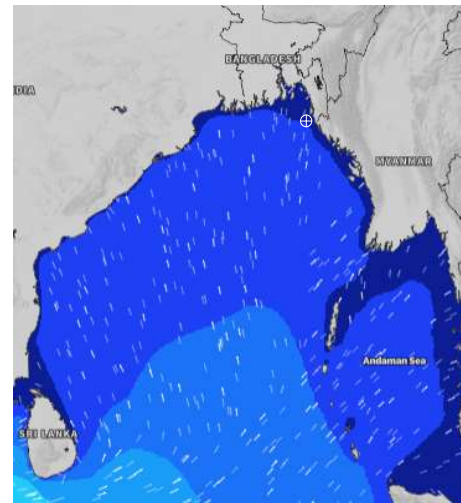
07 Oct 2024



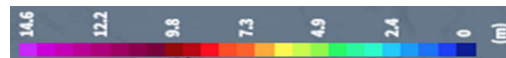
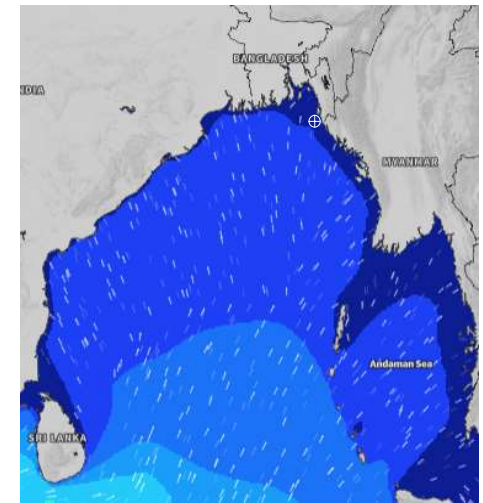
08 Oct 2024



09 Oct 2024



10 Oct 2024



Significant wave height (m)



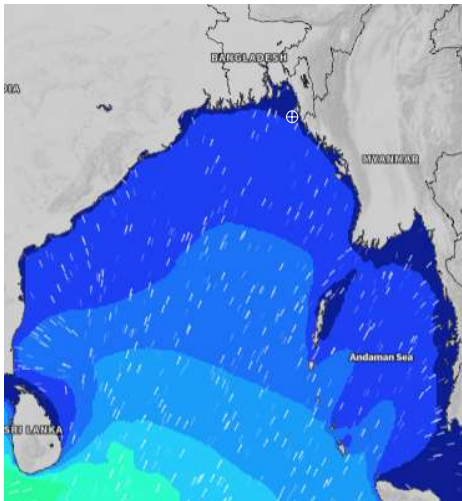
MARINE WEATHER FORECAST (07 to 14 Oct 2024)

20 NM WEST OF ELEPHANT POINT (21° 10' N, 091° 42' E)

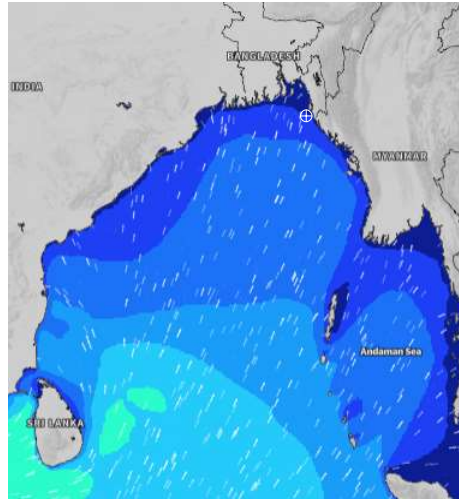


Date	Time	Air Temp (°C)		Sea Surface Temp (°C)	Baro Pressure (mbar)	Wind Direction	Wind Spd (kts)		Wave Ht (m)	Sea State	Humidity (%)	Prob of Rain
		Max	Min				Max	Avg				
11-10-24 (Friday)	0001	31	25	28	1010	WNW	5	4	0.5	2	90	10% (0.0 mm)
	0600			28	1010	SSE	3	2	0.5	2	92	24% (0.0 mm)
	1200			28	1010	WSW	5	4	0.6	3	73	32% (0.2 mm)
	1800			28	1008	WNW	8	7	0.6	3	85	10% (0.0 mm)
12-10-24 (Saturday)	0001	31	26	28	1010	WSW	5	4	0.7	3	90	12% (0.0 mm)
	0600			28	1011	SW	6	5	0.7	3	92	15% (0.0 mm)
	1200			28	1011	WNW	4	3	0.8	3	74	40% (0.4 mm)
	1800			28	1008	WNW	7	6	0.9	3	84	44% (0.4 mm)
13-10-24 (Sunday)	0001	32	26	28	1010	W	6	5	0.9	3	90	43% (0.4 mm)
	0600			28	1011	N	3	2	0.9	3	93	34% (0.2 mm)
	1200			28	1011	WNW	4	3	0.9	3	74	43% (0.4 mm)
	1800			29	1008	WNW	9	8	0.9	3	83	24% (0.0 mm)
14-10-24 (Monday)	0001	32	25	28	1010	NW	7	6	0.9	3	91	64% (0.6 mm)
	0600			28	1011	N	9	8	0.9	3	93	51% (0.5 mm)
	1200			28	1010	NNW	9	8	0.9	3	76	43% (0.4 mm)
	1800			29	1008	NW	15	13	1.0	3	85	28% (0.1 mm)

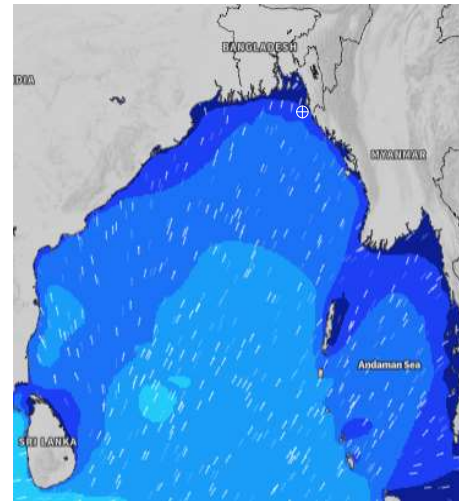
11 Oct 2024



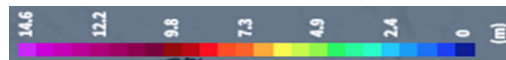
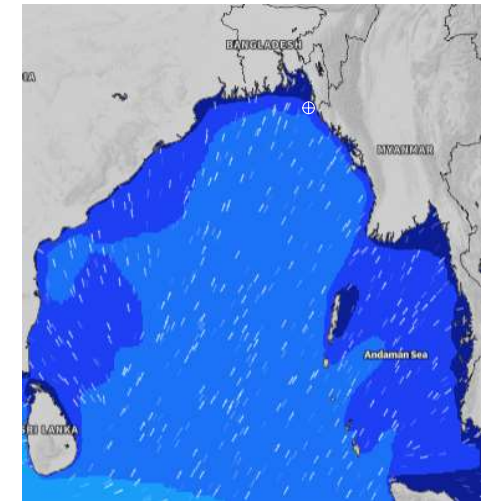
12 Oct 2024



13 Oct 2024



14 Oct 2024



Significant wave height (m)



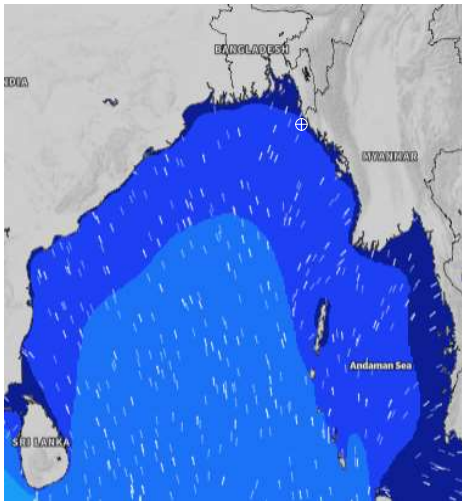
MARINE WEATHER FORECAST (07 to 14 Oct 2024)

15 NM WEST OF ST. MARTIN'S LIGHT HOUSE (20° 37' N, 092° 03' E)

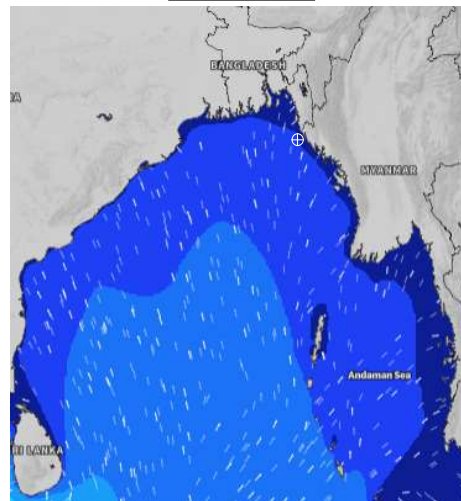


Date	Time	Air Temp (°C)		Sea Surface Temp (°C)	Baro Pressure (mbar)	Wind Direction	Wind Spd (kts)		Wave Ht (m)	Sea State	Humidity (%)	Prob of Rain
		Max	Min				Max	Avg				
07-10-24 (Monday)	0001	31	26	29	1012	SSE	6	5	0.8	3	92	24% (0.0 mm)
	0600			29	1011	SSE	8	7	0.8	3	95	11% (0.0 mm)
	1200			29	1014	ESE	4	3	0.8	3	73	10% (0.0 mm)
	1800			29	1010	W	7	6	0.8	3	84	10% (0.0 mm)
08-10-24 (Tuesday)	0001	32	26	29	1012	WNW	6	5	0.8	3	90	10% (0.0 mm)
	0600			28	1012	WNW	5	4	0.7	3	93	10% (0.0 mm)
	1200			28	1013	NW	4	3	0.7	3	72	11% (0.0 mm)
	1800			29	1010	WNW	8	7	0.7	3	85	12% (0.0 mm)
09-10-24 (Wednesday)	0001	31	26	28	1012	NW	6	5	0.7	3	90	15% (0.0 mm)
	0600			28	1010	NW	7	6	0.7	3	92	11% (0.0 mm)
	1200			28	1012	WNW	7	6	0.7	3	74	16% (0.0 mm)
	1800			29	1009	WNW	8	7	0.7	3	85	10% (0.0 mm)
10-10-24 (Thursday)	0001	31	25	28	1010	WNW	7	6	0.6	3	90	14% (0.0 mm)
	0600			28	1009	NW	6	5	0.6	3	92	22% (0.0 mm)
	1200			28	1011	W	7	6	0.6	3	73	14% (0.0 mm)
	1800			29	1008	WNW	11	10	0.9	3	88	16% (0.0 mm)

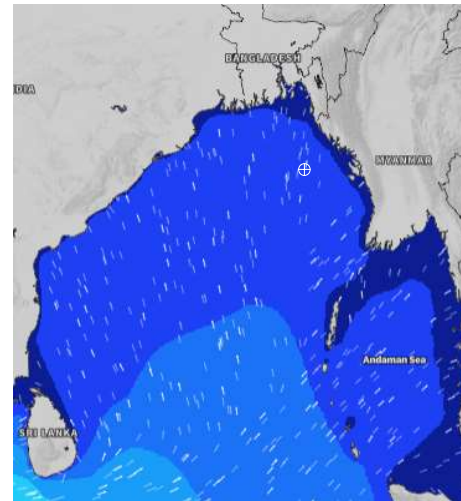
07 Oct 2024



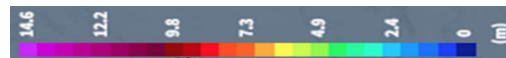
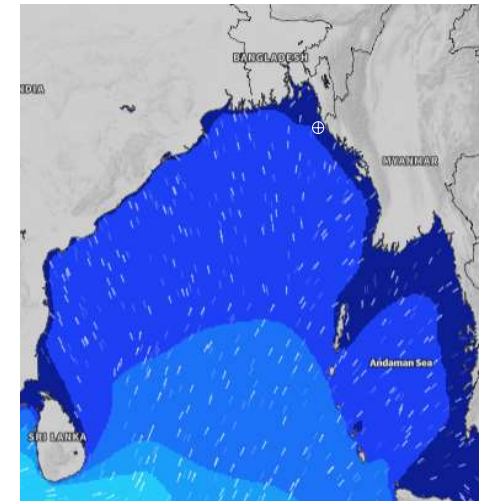
08 Oct 2024



09 Oct 2024



10 Oct 2024



Significant wave height (m)



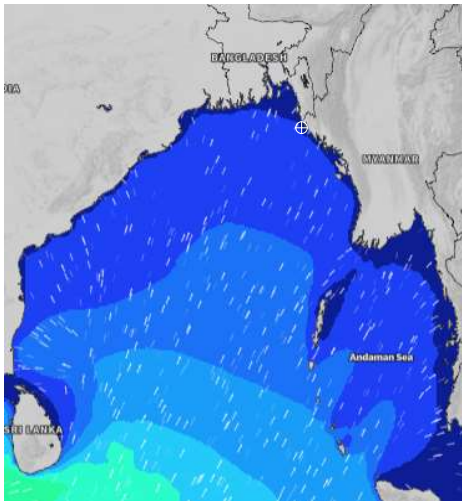
MARINE WEATHER FORECAST (07 to 14 Oct 2024)

15 NM WEST OF ST. MARTIN'S LIGHT HOUSE (20° 37' N, 092° 03' E)

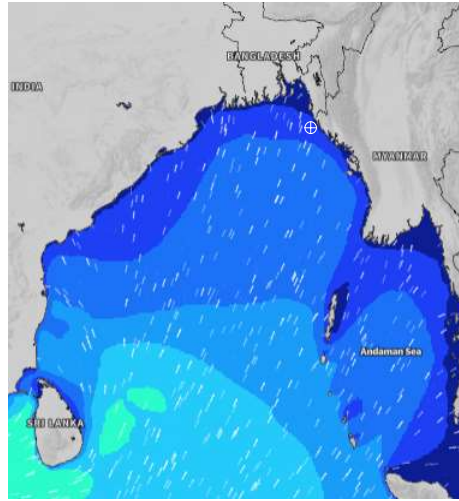


Date	Time	Air Temp (°C)		Sea Surface Temp (°C)	Baro Pressure (mbar)	Wind Direction	Wind Spd (kts)		Wave Ht (m)	Sea State	Humidity (%)	Prob of Rain
		Max	Min				Max	Avg				
11-10-24 (Friday)	0001	31	26	28	1010	NW	6	5	0.6	3	89	12% (0.0 mm)
	0600			28	1009	NW	5	4	0.6	3	92	15% (0.0 mm)
	1200			28	1012	NW	5	4	0.7	3	72	24% (0.0 mm)
	1800			28	1008	WNW	9	8	0.8	3	83	12% (0.0 mm)
12-10-24 (Saturday)	0001	31	26	28	1010	WNW	8	7	0.9	3	90	21% (0.0 mm)
	0600			28	1009	W	5	4	1.0	3	92	24% (0.0 mm)
	1200			28	1012	WNW	3	2	1.0	3	74	22% (0.0 mm)
	1800			28	1008	WNW	8	7	1.1	3	82	16% (0.0 mm)
13-10-24 (Sunday)	0001	32	26	28	1010	WNW	8	7	1.2	3	92	18% (0.0 mm)
	0600			28	1010	WNW	6	5	1.2	3	94	33% (0.2 mm)
	1200			28	1013	NNW	5	4	1.2	3	76	40% (0.3 mm)
	1800			28	1008	NW	10	9	1.2	3	85	12% (0.0 mm)
14-10-24 (Monday)	0001	32	26	28	1010	NW	9	8	1.2	3	92	15% (0.0 mm)
	0600			28	1009	NW	9	8	1.3	4	93	37% (0.2 mm)
	1200			28	1012	N	7	6	1.3	4	76	43% (0.4 mm)
	1800			29	1008	NW	11	10	1.3	4	86	19% (0.0 mm)

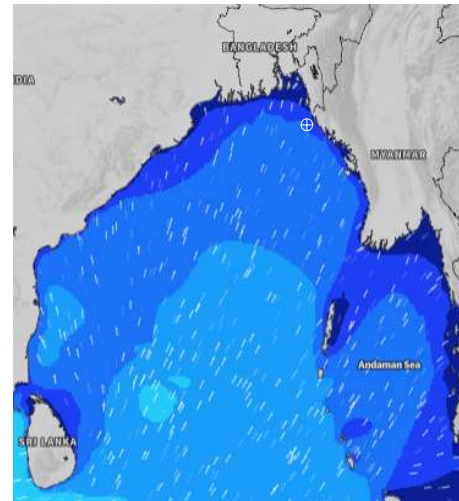
11 Oct 2024



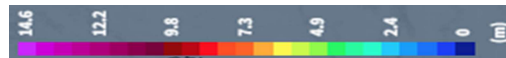
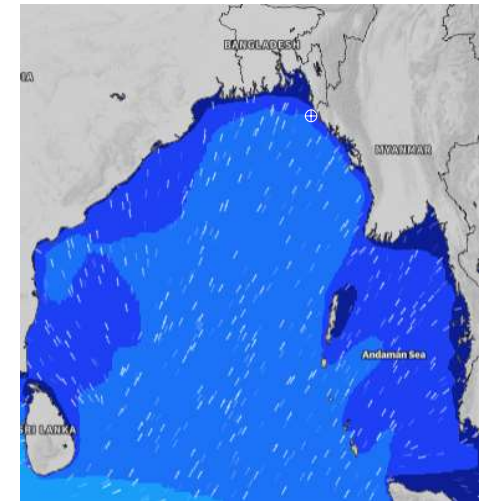
12 Oct 2024



13 Oct 2024



14 Oct 2024



Significant wave height (m)



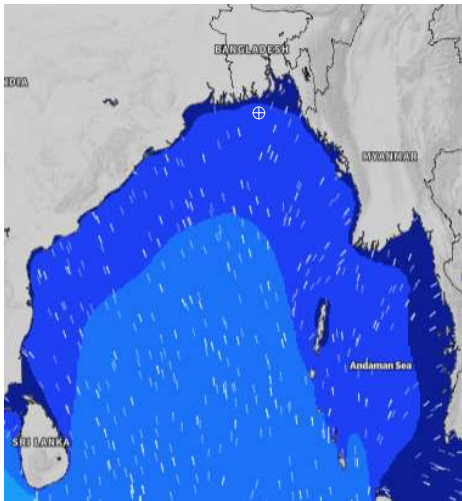
MARINE WEATHER FORECAST (07 to 14 Oct 2024)

40 NM ESE OF PAYRA FAIRWAY (21° 07' N, 090° 45' E)

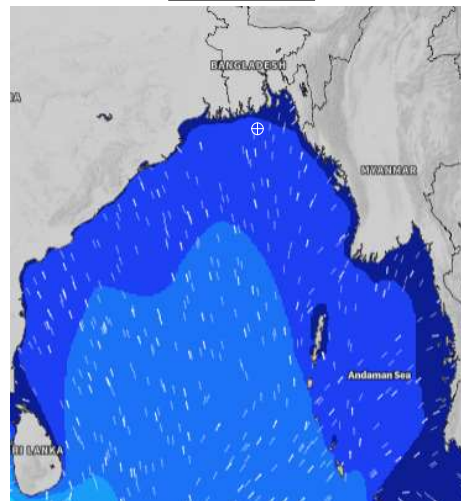


Date	Time	Air Temp (°C)		Sea Surface Temp (°C)	Baro Pressure (mbar)	Wind Direction	Wind Spd (kts)		Wave Ht (m)	Sea State	Humidity (%)	Prob of Rain
		Max	Min				Max	Avg				
07-10-24 (Monday)	0001	30	26	28	1011	SSE	10	9	0.9	3	91	24% (0.0 mm)
	0600			29	1012	SSE	9	8	0.9	3	92	43% (0.3 mm)
	1200			29	1013	SSE	6	5	0.8	3	81	44% (1.0 mm)
	1800			29	1011	S	4	3	0.9	3	84	10% (0.0 mm)
08-10-24 (Tuesday)	0001	31	26	28	1012	SSW	5	4	0.9	3	90	31% (0.2 mm)
	0600			28	1012	WSW	5	4	0.8	3	94	35% (0.2 mm)
	1200			29	1013	SW	5	4	0.8	3	74	43% (0.3 mm)
	1800			29	1011	W	6	5	0.8	3	84	10% (0.0 mm)
09-10-24 (Wednesday)	0001	31	26	28	1011	WSW	7	6	0.8	3	90	31% (0.2 mm)
	0600			28	1011	WSW	7	6	0.8	3	93	35% (0.2 mm)
	1200			28	1011	W	8	7	0.8	3	74	42% (0.4 mm)
	1800			29	1009	WSW	8	7	0.8	3	83	42% (0.3 mm)
10-10-24 (Thursday)	0001	31	27	28	1010	SW	8	7	0.7	3	88	44% (0.2 mm)
	0600			28	1010	WSW	9	8	0.7	3	90	46% (0.2 mm)
	1200			28	1010	WSW	9	8	0.7	3	75	53% (0.3 mm)
	1800			28	1008	WSW	8	7	0.7	3	84	10% (0.0 mm)

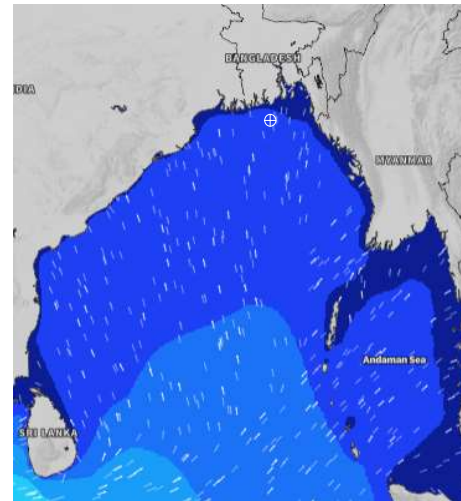
07 Oct 2024



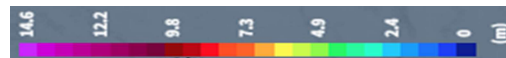
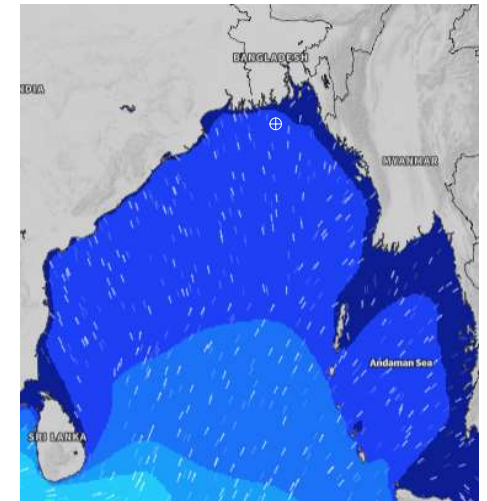
08 Oct 2024



09 Oct 2024



10 Oct 2024



Significant wave height (m)



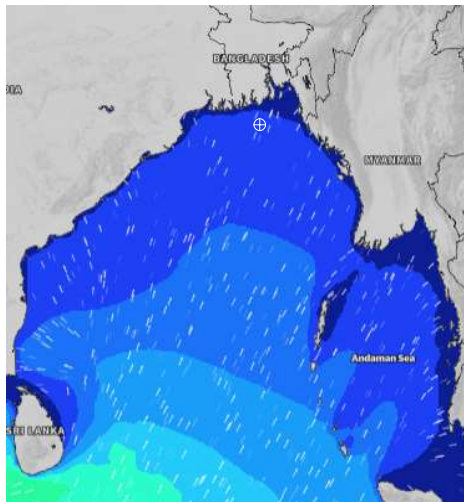
MARINE WEATHER FORECAST (07 to 14 Oct 2024)

40 NM ESE OF PAYRA FAIRWAY (21° 07' N, 090° 45' E)

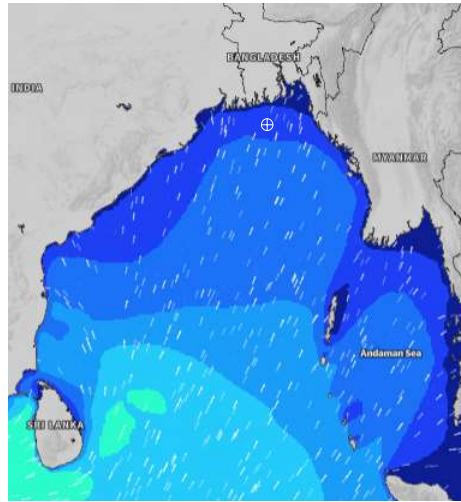


Date	Time	Air Temp (°C)		Sea Surface Temp (°C)	Baro Pressure (mbar)	Wind Direction	Wind Spd (kts)		Wave Ht (m)	Sea State	Humidity (%)	Prob of Rain
		Max	Min				Max	Avg				
11-10-24 (Friday)	0001	30	26	28	1010	WSW	8	7	0.7	3	88	24% (0.0 mm)
	0600			28	1010	SW	7	6	0.7	3	91	48% (0.4 mm)
	1200			28	1010	WSW	7	6	0.8	3	77	41% (0.3 mm)
	1800			28	1008	WSW	7	6	0.9	3	84	12% (0.0 mm)
12-10-24 (Saturday)	0001	31	26	28	1010	SW	8	7	1.0	3	87	22% (0.0 mm)
	0600			28	1010	SW	9	8	1.0	3	91	24% (0.0 mm)
	1200			28	1011	WSW	5	4	1.1	3	76	47% (0.4 mm)
	1800			28	1008	SW	5	4	1.2	3	85	12% (0.0 mm)
13-10-24 (Sunday)	0001	31	26	28	1010	WSW	8	7	1.3	4	88	23% (0.0 mm)
	0600			28	1001	WSW	7	6	1.3	4	92	36% (0.2 mm)
	1200			28	1011	WNW	5	4	1.3	4	76	54% (0.5 mm)
	1800			28	1009	WNW	5	4	1.2	3	82	11% (0.0 mm)
14-10-24 (Monday)	0001	31	26	28	1010	W	8	7	1.3	4	89	34% (0.2 mm)
	0600			28	1011	NNW	8	7	1.3	4	94	50% (0.5 mm)
	1200			29	1011	N	6	5	1.3	4	76	52% (0.5 mm)
	1800			29	1009	NNW	7	6	1.2	3	83	10% (0.0 mm)

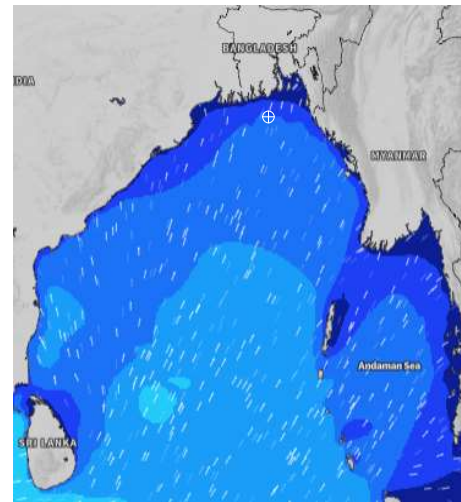
11 Oct 2024



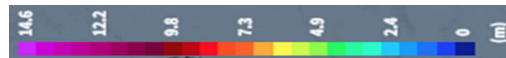
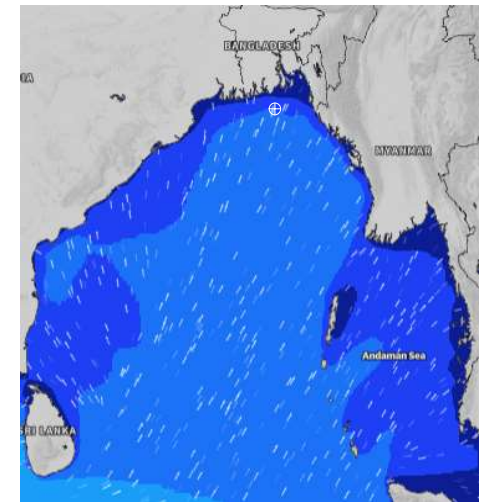
12 Oct 2024



13 Oct 2024



14 Oct 2024



Significant wave height (m)



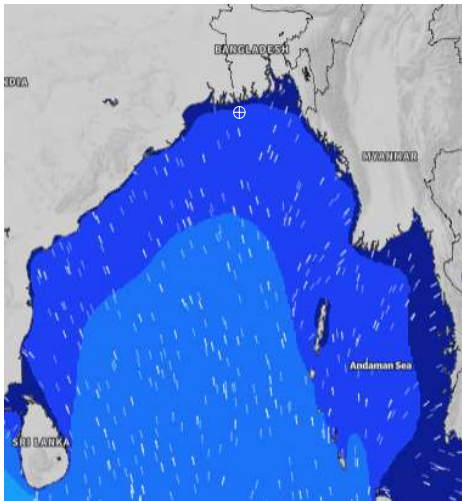
MARINE WEATHER FORECAST (07 to 14 Oct 2024)

10 NM SOUTH OF MONGLA FAIRWAY (21° 16' N, 089° 34' E)

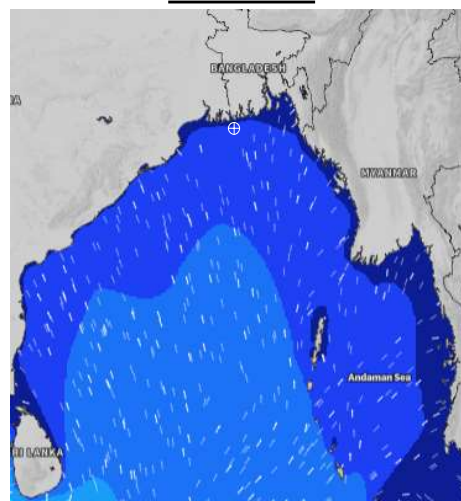


Date	Time	Air Temp (°C)		Sea Surface Temp (°C)	Baro Pressure (mbar)	Wind Direction	Wind Spd (kts)		Wave Ht (m)	Sea State	Humidity (%)	Prob of Rain
		Max	Min				Max	Avg				
07-10-24 (Monday)	0001	31	26	29	1011	SE	8	7	0.8	3	94	24% (0.0 mm)
	0600			28	1011	SSE	5	4	0.8	3	97	13% (0.0 mm)
	1200			29	1013	SE	6	5	0.8	3	78	45% (0.3 mm)
	1800			29	1011	SSE	7	6	0.9	3	88	42% (0.2 mm)
08-10-24 (Tuesday)	0001	32	26	29	1012	SSW	6	5	0.9	3	96	32% (0.2 mm)
	0600			28	1012	S	6	5	0.9	3	97	42% (0.2 mm)
	1200			29	1013	SW	8	7	1.0	3	72	39% (0.4 mm)
	1800			29	1011	WSW	6	5	1.0	3	88	10% (0.0 mm)
09-10-24 (Wednesday)	0001	32	26	28	1011	SW	8	7	1.0	3	93	31% (0.2 mm)
	0600			28	1011	WSW	10	9	1.0	3	96	32% (0.2 mm)
	1200			29	1011	WSW	10	9	1.0	3	72	51% (0.4 mm)
	1800			29	1009	WSW	10	9	1.0	3	84	35% (0.2 mm)
10-10-24 (Thursday)	0001	32	26	28	1009	SW	10	9	0.9	3	92	38% (0.2 mm)
	0600			28	1010	SW	11	10	1.0	3	96	42% (0.4 mm)
	1200			29	1010	WSW	10	9	0.9	3	74	66% (0.6 mm)
	1800			29	1008	WSW	9	8	0.9	3	85	14% (0.0 mm)

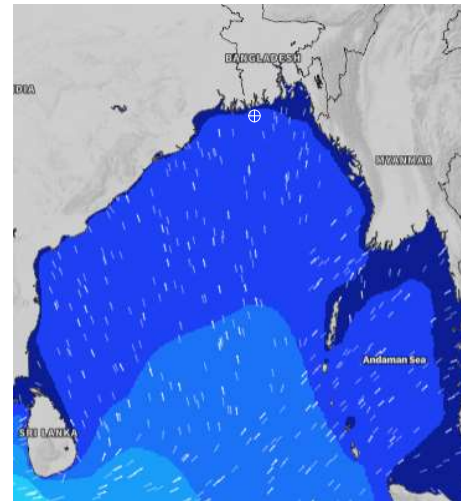
07 Oct 2024



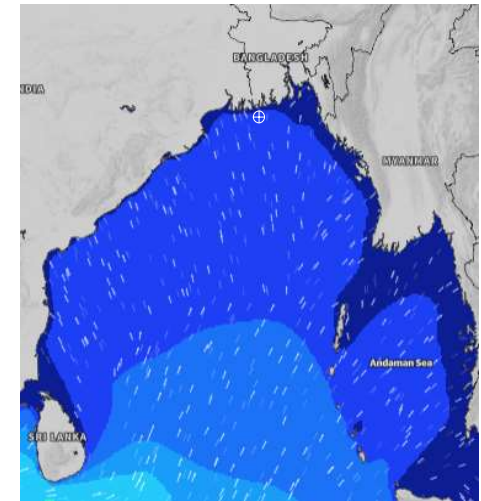
08 Oct 2024



09 Oct 2024



10 Oct 2024



Significant wave height (m)



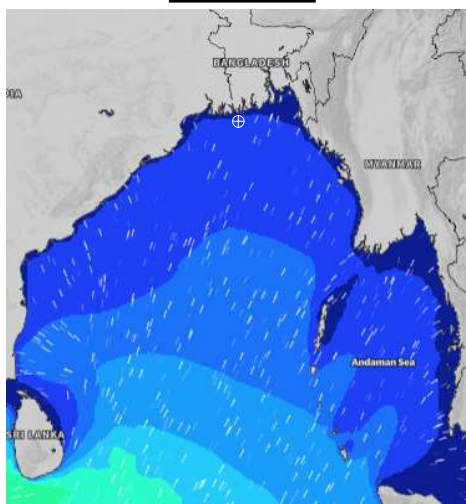
MARINE WEATHER FORECAST (07 to 14 Oct 2024)

10 NM SOUTH OF MONGLA FAIRWAY (21° 16' N, 089° 34' E)

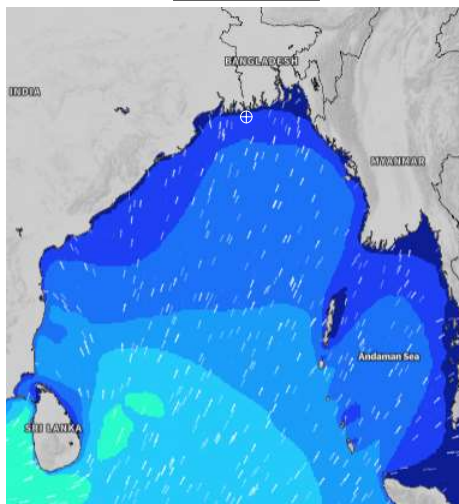


Date	Time	Air Temp (°C)		Sea Surface Temp (°C)	Baro Pressure (mbar)	Wind Direction	Wind Spd (kts)		Wave Ht (m)	Sea State	Humidity (%)	Prob of Rain
		Max	Min				Max	Avg				
11-10-24 (Friday)	0001	32	26	28	1010	SW	9	8	0.8	3	93	17% (0.0 mm)
	0600			28	1009	SW	11	10	0.8	3	94	44% (0.4 mm)
	1200			28	1010	SW	10	9	0.8	3	74	51% (0.6 mm)
	1800			28	1008	SW	8	7	0.8	3	84	15% (0.0 mm)
12-10-24 (Saturday)	0001	32	25	28	1010	SSW	10	9	0.9	3	92	32% (0.2 mm)
	0600			28	1010	SW	12	10	0.9	3	94	37% (0.2 mm)
	1200			29	1010	WSW	8	7	1.0	3	75	24% (0.0 mm)
	1800			29	1008	SW	8	7	1.0	3	85	24% (0.0 mm)
13-10-24 (Sunday)	0001	32	25	28	1010	SSW	10	9	1.0	3	93	37% (0.2 mm)
	0600			28	1011	WSW	9	8	1.0	3	94	50% (0.5 mm)
	1200			28	1011	W	5	4	1.0	3	74	58% (0.6 mm)
	1800			29	1009	W	4	3	1.0	3	85	30% (0.2 mm)
14-10-24 (Monday)	0001	32	25	28	1010	SW	9	8	1.1	3	92	30% (0.2 mm)
	0600			28	1011	WNW	6	5	1.2	3	94	24% (0.0 mm)
	1200			28	1011	N	4	3	1.2	3	76	32% (0.2 mm)
	1800			29	1009	WSW	5	4	1.1	3	85	18% (0.0 mm)

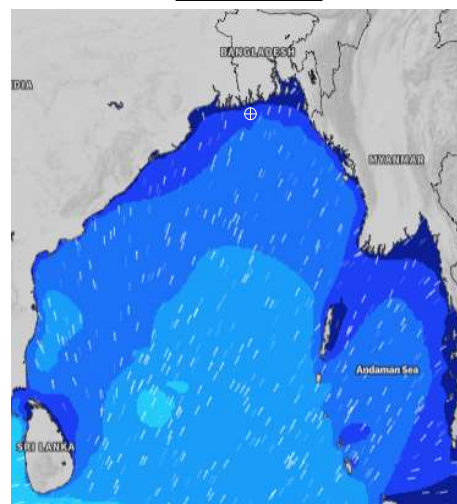
11 Oct 2024



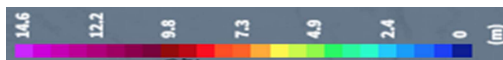
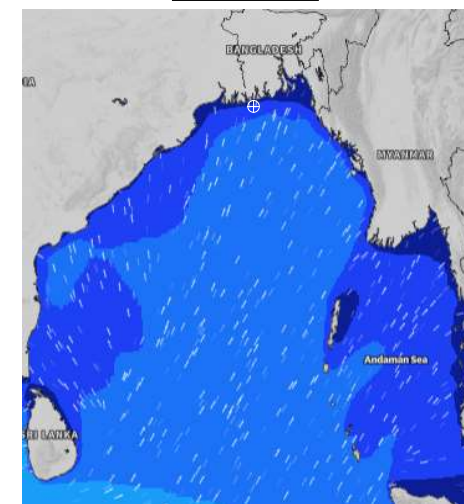
12 Oct 2024



13 Oct 2024



14 Oct 2024



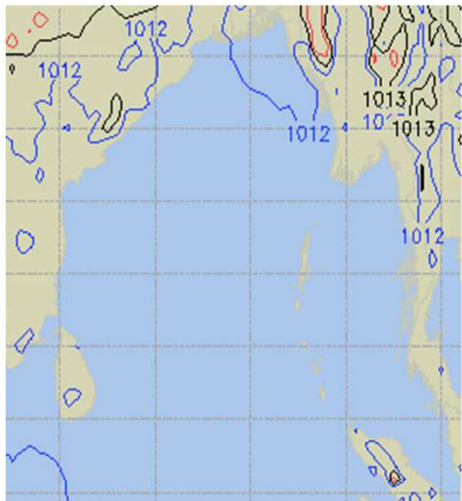
Significant wave height (m)



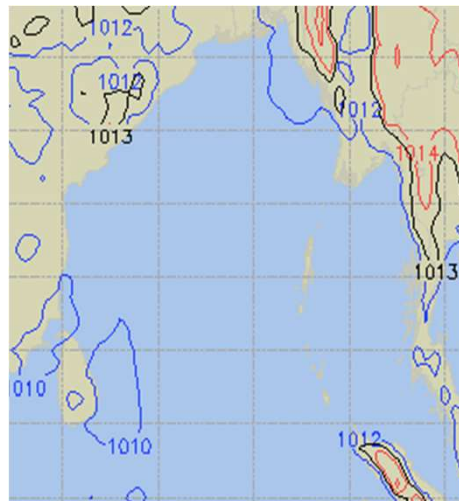
PREDICTED SURFACE PRESSURE FORECAST (07 to 13 Oct 2024)



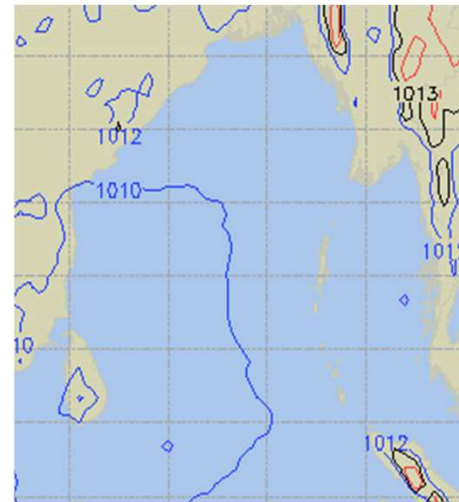
07 Oct 2024



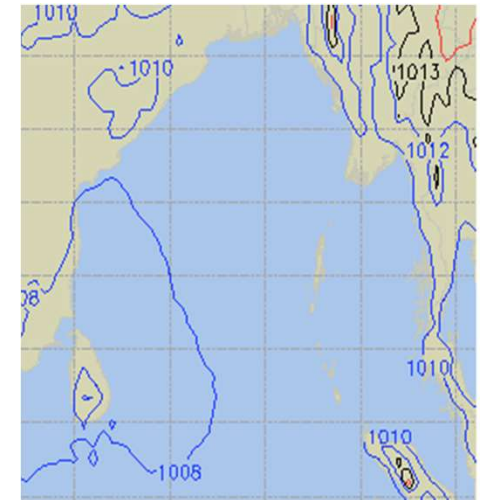
08 Oct 2024



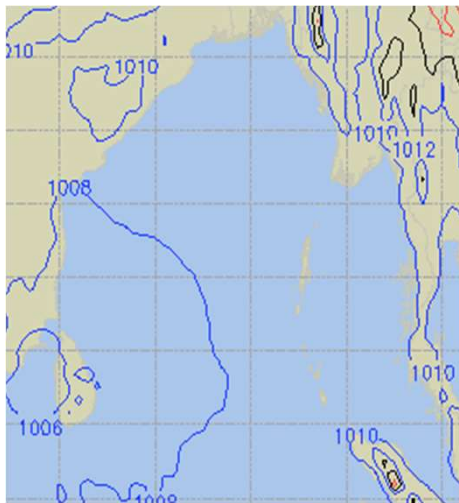
09 Oct 2024



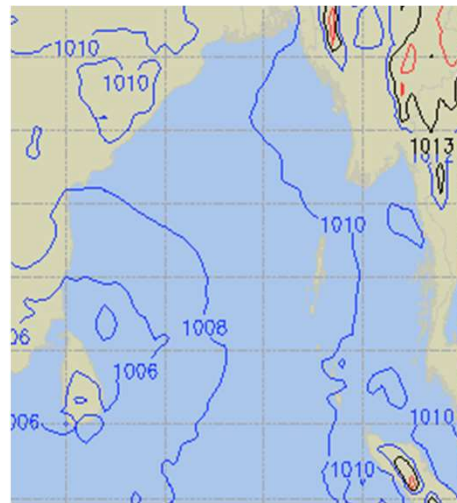
10 Oct 2024



11 Oct 2024



12 Oct 2024



13 Oct 2024

