



SUMMARY OF MARINE WEATHER FORECAST
COASTAL AREA OF BANGLADESH
DATE: 07 to 14 April 2026



Fleet Forecast	Seasonal low lies over South Bay.
Wind Direction, Speed	West/South-westerly 10-15 kts
Wave Height & Sea State	Ctg Outer Anchorage: 0.2 to 0.4 m (Sea state: 2) Abeam to Cox's Bazar: 0.6 to 0.9 m (Sea state: 3) St. Martin's Island: 0.7 to 1.0 m (Sea state 3) Payra Fairway Buoy: 0.8 to 1.2 m (Sea state: 3) Mongla Fairway Buoy: 0.8 to 1.2 m (Sea state: 3) Outer EEZ: 0.8 to 1.3 m (Sea state: 3 to 4)
Sea Surface Temperature	23° C - 29° C
Baro Pressure	1008-1013 mb
Rainfall	Partly cloudy to cloudy sky & light rain/ thunder shower with gusty wind is likely to occur over Bay of Bengal and adjoining area.
Fog & Visibility	Hazy condition over the Bay of Bengal & coastal area, Visibility 1.5 – 5.0 km

Marine Weather Outlook (07 to 14 April 2026):

- Partly cloudy to cloudy sky & light rain/ thunder shower with gusty wind is likely to occur over Bay of Bengal and adjoining area.
- Hazy condition over the Bay of Bengal & coastal area, Visibility 1.5 – 5.0 km
- Day and Night temperature may remain nearly unchanged.



MARINE WEATHER FORECAST (07 to 14 April 2026) PATENGA POINT (22° 12' N, 091° 38' E)



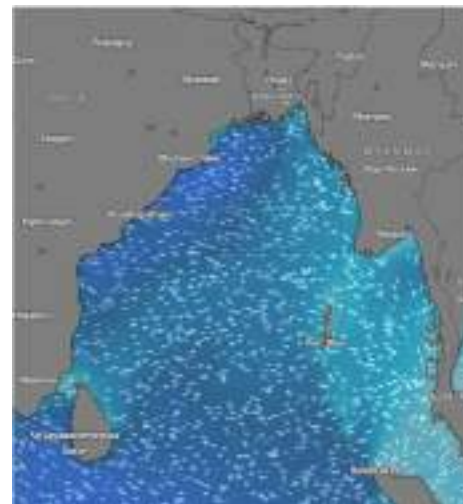
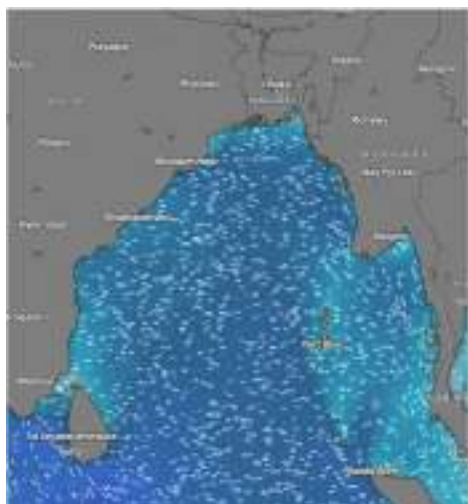
Date	Time	Air Temp (°C)		Sea Surface Temp (°C)	Baro Pressure (mbar)	Wind Direction	Wind Spd (kts)		Wave Ht (m)	Sea State	Humidity (%)	Prob of Rain (%)	Amount of Rain (mm)
		Max	Min				Gusting	Avg					
07-04-26 (Tuesday)	0001	32	23	23	1010	S	12	08	0.2	2	88	12	0.0
	0600			22	1011	S	13	09	0.2	2	92	16	0.0
	1200			28	1010	SSW	12	08	0.2	2	78	08	0.0
	1800			26	1009	SSW	12	09	0.3	2	85	10	0.0
08-04-26 (Wednesday)	0001	32	23	23	1011	S	10	06	0.2	2	86	11	0.0
	0600			22	1012	SW	09	05	0.2	2	91	15	0.0
	1200			29	1010	SSW	12	09	0.2	2	73	09	0.0
	1800			26	1009	SW	10	06	0.2	2	85	11	0.0
09-04-26 (Thursday)	0001	32	23	23	1011	SW	09	05	0.2	2	89	10	0.0
	0600			22	1012	SW	05	03	0.2	2	90	13	0.0
	1200			29	1010	SSW	07	04	0.4	2	74	08	0.0
	1800			26	1009	SW	12	08	0.2	2	85	14	0.0
10-04-26 (Friday)	0001	32	24	23	1011	SSW	10	06	0.2	2	89	12	0.0
	0600			22	1012	SE	07	04	0.2	2	91	07	0.0
	1200			29	1010	SSW	10	06	0.2	2	75	15	0.0
	1800			26	1009	SSW	05	03	0.2	2	87	09	0.0

07 Apr 2026

08 Apr 2026

09 Apr 2026

10 Apr 2026



Significant wave height (m)



MARINE WEATHER FORECAST (07 to 14 April 2026) PATENGA POINT (22° 12' N, 091° 38' E)



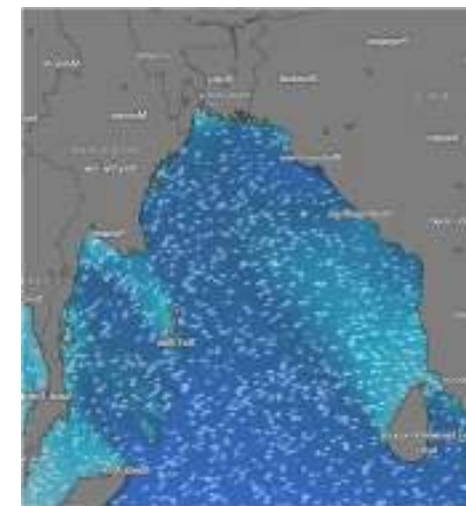
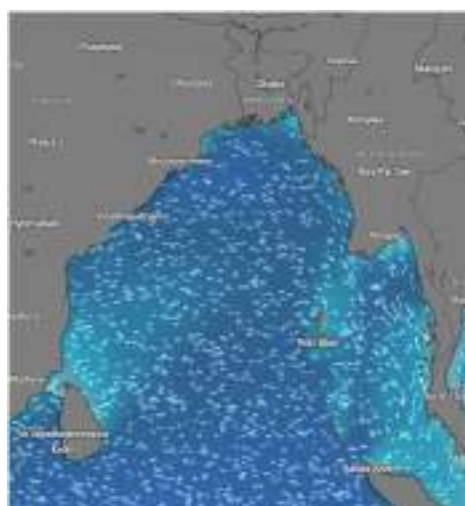
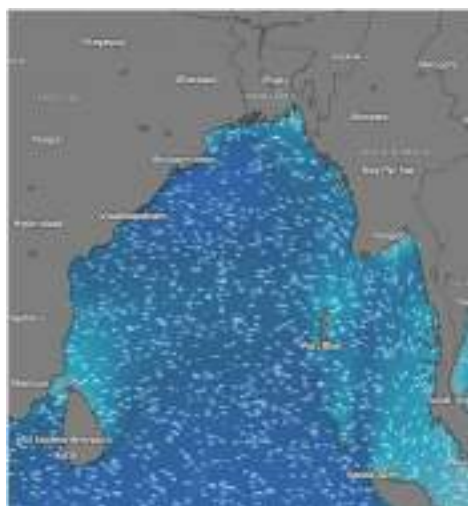
Date	Time	Air Temp (°C)		Sea Surface Temp (°C)	Baro Pressure (mbar)	Wind Direction	Wind Spd (kts)		Wave Ht (m)	Sea State	Humidity (%)	Prob of Rain (%)	Amount of Rain (mm)
		Max	Min				Gusting	Avg					
11-04-26 (Saturday)	0001	32	22	23	1010	SW	07	04	0.4	2	88	12	0.0
	0600			22	1011	SSE	09	05	0.3	2	90	07	0.0
	1200			29	1010	SE	05	03	0.2	2	74	09	0.0
	1800			26	1009	SW	09	05	0.3	2	86	16	0.0
12-04-26 (Sunday)	0001	32	23	23	1009	SSW	09	05	0.3	2	89	09	0.0
	0600			22	1010	SE	07	04	0.3	2	91	12	0.0
	1200			29	1008	SSW	12	08	0.3	2	75	07	0.0
	1800			26	1007	SSW	13	09	0.4	2	87	15	0.0
13-04-26 (Monday)	0001	32	23	22	1008	SSW	11	07	0.3	2	91	08	0.0
	0600			23	1010	SW	09	05	0.3	2	87	11	0.0
	1200			28	1011	S	11	07	0.3	2	76	09	0.0
	1800			27	1009	SW	12	08	0.3	2	85	13	0.0
14-04-26 (Tuesday)	0001	32	23	22	1008	SSW	13	09	0.3	2	92	09	0.0
	0600			23	1010	SW	10	06	0.3	2	86	12	0.0
	1200			28	1011	S	09	05	0.3	2	77	10	0.0
	1800			27	1010	SW	12	09	0.3	2	86	14	0.0

11 Apr 2026

12 Apr 2026

13 Apr 2026

14 Apr 2026



Significant wave height (m)



MARINE WEATHER FORECAST (07 to 14 April 2026)

ABEAM TO KUTUBDIA (21° 51' N, 091° 40' E)



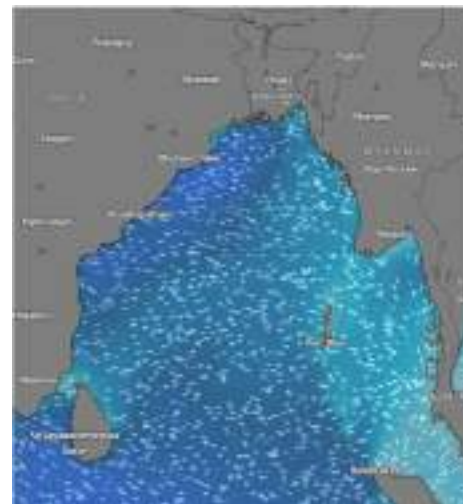
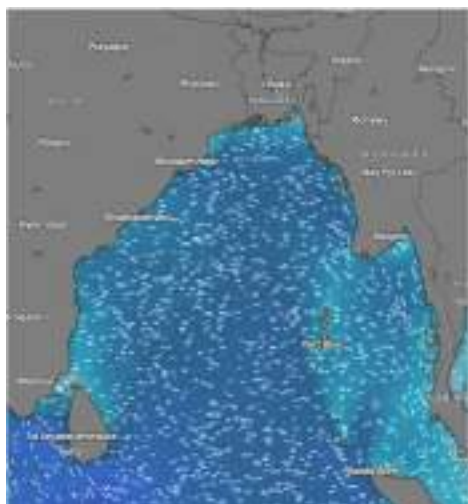
Date	Time	Air Temp (°C)		Sea Surface Temp (°C)	Baro Pressure (mbar)	Wind Direction	Wind Spd (kts)		Wave Ht (m)	Sea State	Humidity (%)	Prob of Rain (%)	Amount of Rain (mm)
		Max	Min				Gusting	Avg					
07-04-26 (Tuesday)	0001	32	23	23	1011	SSW	07	04	0.4	2	89	12	0.0
	0600			22	1012	S	09	05	0.5	3	91	16	0.0
	1200			29	1010	SSW	10	07	0.3	2	76	10	0.0
	1800			26	1009	SW	12	08	0.3	2	86	16	0.0
08-04-26 (Wednesday)	0001	32	24	23	1011	S	11	07	0.4	2	89	09	0.0
	0600			22	1012	S	10	06	0.3	2	90	12	0.0
	1200			29	1010	SW	07	04	0.4	2	78	07	0.0
	1800			26	1009	S	14	10	0.4	2	85	10	0.0
09-04-26 (Thursday)	0001	32	23	23	1011	W	13	09	0.4	2	90	10	0.0
	0600			22	1010	SW	07	04	0.3	2	91	13	0.0
	1200			29	1010	SW	09	05	0.4	2	75	09	0.0
	1800			26	1009	W	07	04	0.4	2	87	14	0.0
10-04-26 (Friday)	0001	32	23	23	1010	W	16	12	0.6	3	89	10	0.0
	0600			22	1011	SW	15	11	0.6	3	90	13	0.0
	1200			29	1010	SW	10	06	0.5	3	74	09	0.0
	1800			26	1009	W	14	10	0.5	3	86	15	0.0

07 Apr 2026

08 Apr 2026

09 Apr 2026

10 Apr 2026



Significant wave height (m)



MARINE WEATHER FORECAST (07 to 14 April 2026)

ABEAM TO KUTUBDIA (21° 51' N, 091° 40' E)

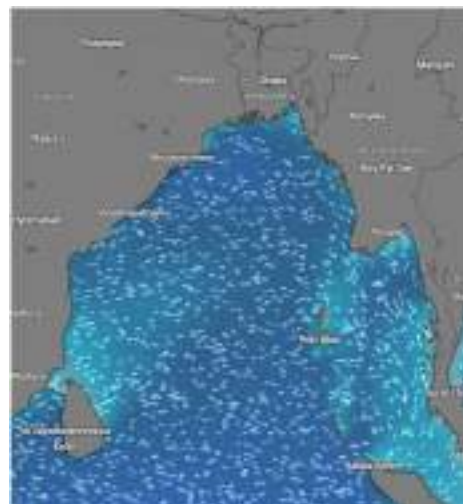


Date	Time	Air Temp (°C)		Sea Surface Temp (°C)	Baro Pressure (mbar)	Wind Direction	Wind Spd (kts)		Wave Ht (m)	Sea State	Humidity (%)	Prob of Rain (%)	Amount of Rain (mm)
		Max	Min				Gusting	Avg					
11-04-26 (Saturday)	0001	32	22	23	1009	SW	11	07	0.4	2	90	09	0.0
	0600			22	1010	SSE	15	11	0.4	2	91	12	0.0
	1200			29	1008	S	11	07	0.4	2	75	11	0.0
	1800			26	1007	SSW	13	09	0.5	3	87	17	0.0
12-04-26 (Sunday)	0001	32	23	23	1009	SW	11	07	0.4	2	89	09	0.0
	0600			22	1010	SSE	15	11	0.4	2	90	12	0.0
	1200			29	1008	S	11	07	0.4	2	76	11	0.0
	1800			26	1007	SSW	13	09	0.5	3	87	17	0.0
13-04-26 (Monday)	0001	32	23	24	1009	SW	12	08	0.4	2	88	10	0.0
	0600			23	1010	SE	14	10	0.5	3	91	14	0.0
	1200			30	1008	S	10	07	0.4	2	77	12	0.0
	1800			27	1008	SW	14	10	0.5	3	88	15	0.0
14-04-26 (Tuesday)	0001	32	23	24	1009	SW	11	07	0.3	2	88	10	0.0
	0600			23	1010	SSW	07	04	0.4	2	90	14	0.0
	1200			30	1008	S	11	07	0.4	2	75	12	0.0
	1800			27	1008	SW	14	10	0.4	2	85	15	0.0

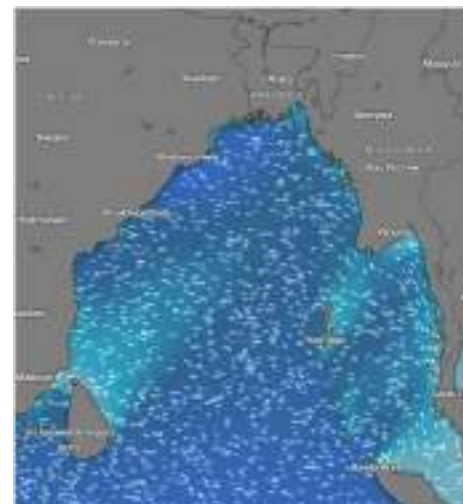
11 Apr 2026



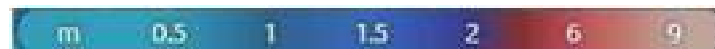
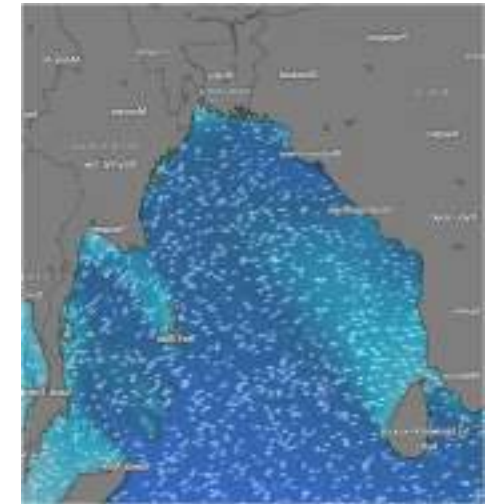
12 Apr 2026



13 Apr 2026



14 Apr 2026



Significant wave height (m)



MARINE WEATHER FORECAST (07 to 14 April 2026)

ABEAM TO ELEPHANT POINT (21° 11' N, 091° 52' E)



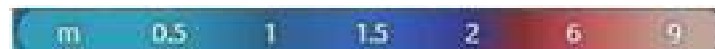
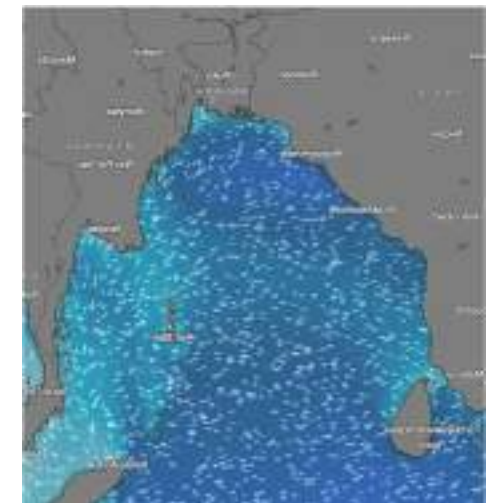
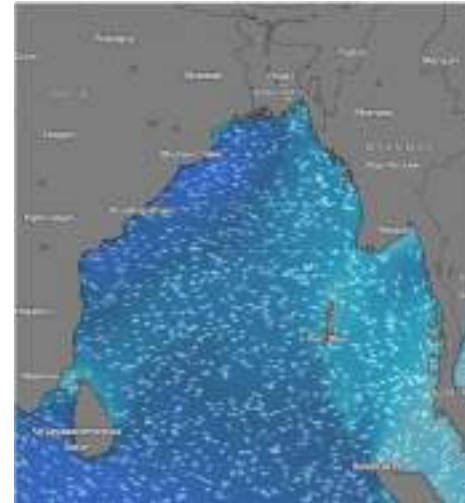
Date	Time	Air Temp (°C)		Sea Surface Temp (°C)	Baro Pressure (mbar)	Wind Direction	Wind Spd (kts)		Wave Ht (m)	Sea State	Humidity (%)	Prob of Rain (%)	Amount of Rain (mm)
		Max	Min				Gusting	Avg					
07-04-26 (Tuesday)	0001	32	23	23	1011	W	16	12	0.8	3	89	10	0.0
	0600			22	1012	SW	15	11	0.8	3	91	15	0.0
	1200			29	1010	SW	10	06	0.8	3	74	09	0.0
	1800			26	1009	SSW	12	08	0.7	3	87	13	0.0
08-04-26 (Wednesday)	0001	32	23	23	1011	W	12	08	0.6	3	89	11	0.0
	0600			22	1012	NW	07	04	0.6	3	90	16	0.0
	1200			29	1010	W	10	06	0.7	3	77	08	0.0
	1800			26	1009	NNW	12	08	0.6	3	85	17	0.0
09-04-26 (Thursday)	0001	32	24	23	1010	SE	10	06	0.7	3	87	11	0.0
	0600			22	1011	W	10	06	0.6	3	90	16	0.0
	1200			29	1010	SW	16	12	0.8	3	74	08	0.0
	1800			26	1009	NNW	07	03	0.9	3	86	17	0.0
10-04-26 (Friday)	0001	32	23	23	1010	S	12	08	0.8	3	88	09	0.0
	0600			22	1011	SSE	11	07	0.8	3	91	16	0.0
	1200			29	1010	SW	12	08	0.8	3	75	08	0.0
	1800			26	1009	W	10	06	0.8	3	87	15	0.0

07 Apr 2026

08 Apr 2026

09 Apr 2026

10 Apr 2026



Significant wave height (m)



MARINE WEATHER FORECAST (07 to 14 April 2026)

ABEAM TO ELEPHANT POINT (21° 11' N, 091° 52' E)



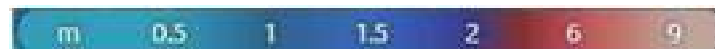
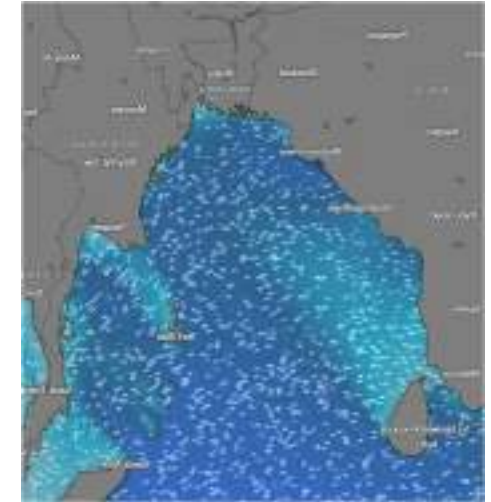
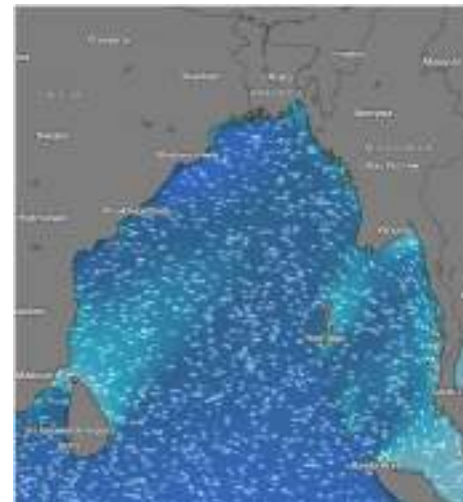
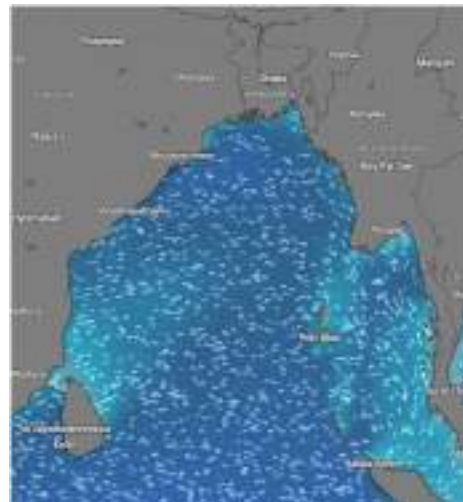
Date	Time	Air Temp (°C)		Sea Surface Temp (°C)	Baro Pressure (mbar)	Win Direction	Wind Spd (kts)		Wave Ht (m)	Sea State	Humidity (%)	Prob of Rain (%)	Amount of Rain (mm)
		Max	Min				Gusting	Avg					
11-04-26 (Saturday)	0001	32	23	23	1009	W	11	10	0.8	3	90	08	0.0
	0600			22	1010	SE	12	08	0.8	3	92	13	0.0
	1200			29	1008	W	07	04	0.8	3	74	11	0.0
	1800			26	1007	SW	11	07	0.9	3	86	16	0.0
12-04-26 (Sunday)	0001	32	22	23	1009	W	11	10	0.8	3	90	08	0.0
	0600			22	1010	SE	12	08	0.8	3	92	13	0.0
	1200			29	1008	W	07	04	0.8	3	77	11	0.0
	1800			26	1007	SW	11	07	0.9	3	85	16	0.0
13-04-26 (Monday)	0001	32	22	22	1009	SW	14	10	0.8	3	91	11	0.0
	0600			23	1010	SE	13	09	0.7	3	90	12	0.0
	1200			28	1009	SW	09	05	0.8	3	73	13	0.0
	1800			26	1008	SSW	12	09	0.8	3	84	15	0.0
14-04-26 (Tuesday)	0001	32	22	22	1009	SW	14	10	0.9	3	90	11	0.0
	0600			23	1010	NNW	09	05	0.8	3	91	12	0.0
	1200			28	1009	SW	11	07	0.8	3	75	13	0.0
	1800			26	1008	W	13	09	0.9	3	86	15	0.0

11 Apr 2026

12 Apr 2026

13 Apr 2026

14 Apr 2026



Significant wave height (m)



MARINE WEATHER FORECAST (07 to 14 April 2026)

ABEAM TO ST. MARTIN'S LIGHT HOUSE (20° 37' N, 092° 08' E)



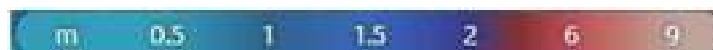
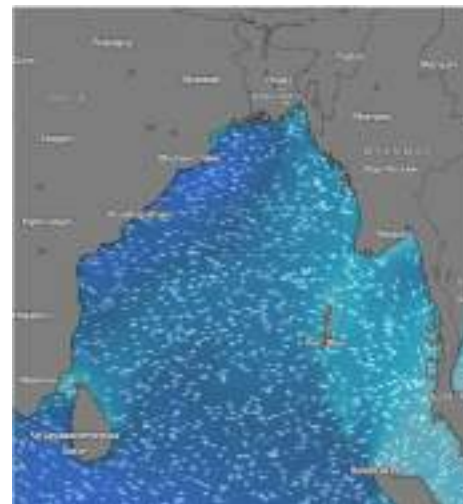
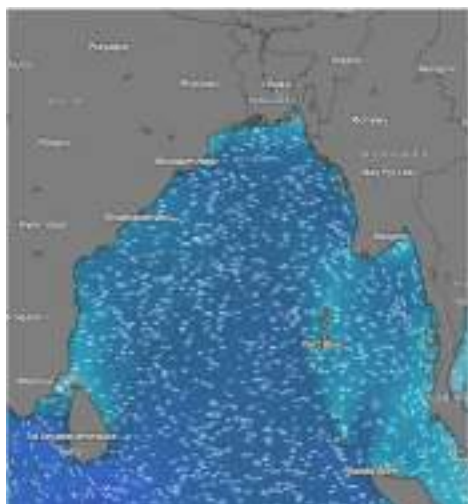
Date	Time	AirTemp (°C)		Sea Surface Temp (°C)	Baro Pressure (mbar)	Wind Direction	Wind Spd (kts)		Wave Ht (m)	Sea State	Humidity (%)	Prob of Rain (%)	Amount of Rain (mm)
		Max	Min				Gusting	Avg					
07-04-26 (Tuesday)	0001	32	23	23	1011	NW	24	18	1.0	3	89	10	0.0
	0600			22	1012	NE	17	13	1.0	3	90	15	0.0
	1200			29	1010	W	12	08	0.9	3	75	08	0.0
	1800			26	1009	NW	12	08	0.9	3	89	16	0.0
08-04-26 (Wednesday)	0001	32	22	23	1011	NW	14	10	0.9	3	89	10	0.0
	0600			22	1012	NNW	09	05	0.7	3	90	15	0.0
	1200			29	1010	NW	09	05	0.7	3	77	08	0.0
	1800			26	1009	NW	13	09	0.7	3	85	16	0.0
09-04-26 (Thursday)	0001	31	24	23	1011	NW	10	06	0.6	3	88	10	0.0
	0600			22	1012	NNW	09	05	0.6	3	91	15	0.0
	1200			29	1010	W	14	10	0.7	3	75	12	0.0
	1800			26	1009	NW	12	08	0.7	3	86	17	0.0
10-04-26 (Friday)	0001	32	23	23	1010	S	05	03	0.8	3	88	09	0.0
	0600			22	1011	W	12	08	0.9	3	90	16	0.0
	1200			29	1010	W	14	10	1.0	3	74	09	0.0
	1800			26	1009	SW	11	07	1.0	3	87	14	0.0

07 Apr 2026

08 Apr 2026

09 Apr 2026

10 Apr 2026



Significant wave height (m)



MARINE WEATHER FORECAST (07 to 14 April 2026)

ABEAM TO ST. MARTIN'S LIGHT HOUSE (20° 37' N, 092° 08' E)



Date	Time	Air Temp (°C)		Sea Surface Temp (°C)	Baro Pressure (mbar)	Wind Direction	Wind Spd (kts)		Wave Ht (m)	Sea State	Humidity (%)	Prob of Rain (%)	Amount of Rain (mm)
		Max	Min				Gusting	Avg					
11-04-26 (Saturday)	0001	32	23	23	1009	W	18	12	0.9	3	89	10	0.0
	0600			22	1010	E	15	10	0.8	3	91	15	0.0
	1200			29	1008	W	11	07	0.9	3	75	12	0.0
	1800			26	1007	SW	13	09	0.9	3	86	17	0.0
12-04-26 (Sunday)	0001	32	22	23	1009	W	12	08	0.9	3	89	10	0.0
	0600			22	1010	E	10	06	0.8	3	90	15	0.0
	1200			29	1008	W	11	07	0.9	3	77	12	0.0
	1800			26	1007	SW	13	09	0.9	3	85	17	0.0
13-04-26 (Monday)	0001	32	22	24	1008	SW	14	09	0.8	3	88	11	0.0
	0600			25	1011	SSE	12	08	0.8	3	89	13	0.0
	1200			30	1008	SW	11	07	0.9	3	78	11	0.0
	1800			27	1009	S	12	08	0.8	3	86	15	0.0
14-04-26 (Tuesday)	0001	32	22	24	1008	SW	15	10	0.8	3	83	12	0.0
	0600			25	1011	SSE	12	08	0.9	3	87	14	0.0
	1200			30	1008	SW	11	07	0.9	3	76	12	0.0
	1800			27	1009	SE	15	10	0.9	3	88	16	0.0

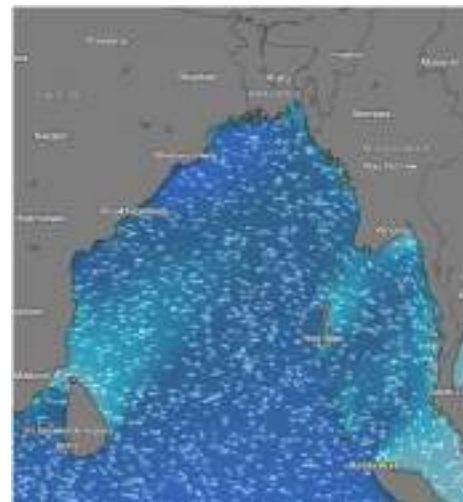
11 Apr 2026



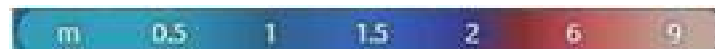
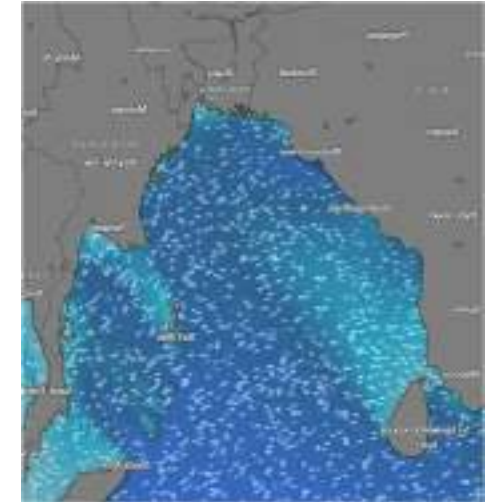
12 Apr 2026



13 Apr 2026



14 Apr 2026



Significant wave height (m)



MARINE WEATHER FORECAST (07 to 14 April 2026)



PAYRA FAIRWAY (21° 22' N, 090° 6' E)

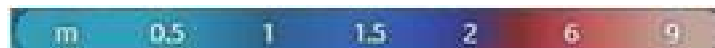
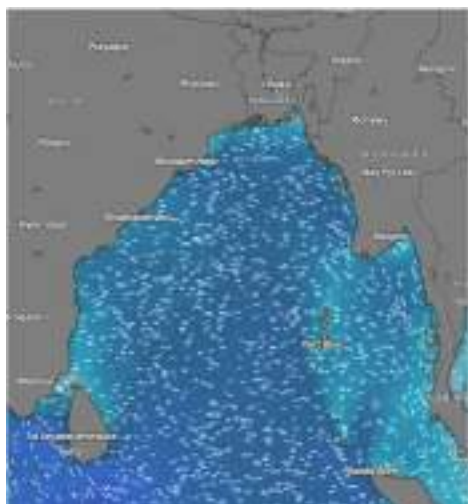
Date	Time	Air Temp (°C)		Sea Surface Temp (°C)	Baro Pressure (mbar)	Wind Direction	Wind Spd (kts)		Wave Ht (m)	Sea State	Humidity (%)	Prob of Rain (%)	Amount of Rain (mm)
		Max	Min				Gusting	Avg					
07-04-26 (Tuesday)	0001	31	23	23	1011	SSW	12	08	0.9	3	88	10	0.0
	0600			22	1012	SW	14	10	0.9	3	90	15	0.0
	1200			29	1010	SSW	12	08	0.9	3	76	09	0.0
	1800			26	1009	SW	13	09	0.9	3	85	16	0.0
08-04-26 (Wednesday)	0001	32	23	23	1011	SSW	14	10	0.9	3	89	11	0.0
	0600			22	1012	SSW	14	10	0.9	3	91	15	0.0
	1200			29	1010	SW	12	08	0.8	3	75	09	0.0
	1800			26	1009	SW	10	06	0.9	3	86	13	0.0
09-04-26 (Thursday)	0001	32	24	23	1011	SSW	12	08	0.9	3	88	12	0.0
	0600			22	1012	SW	12	08	1.0	3	90	16	0.0
	1200			29	1010	SW	11	07	1.1	3	08	09	0.0
	1800			26	1009	W	09	05	1.2	3	87	14	0.0
10-04-26 (Friday)	0001	32	23	23	1010	SSW	10	06	1.2	3	89	12	0.0
	0600			22	1011	SW	15	11	1.1	3	91	16	0.0
	1200			29	1010	SW	14	10	1.1	3	74	08	0.0
	1800			26	1009	SW	16	12	1.1	3	86	17	0.0

07 Apr 2026

08 Apr 2026

09 Apr 2026

10 Apr 2026



Significant wave height (m)



MARINE WEATHER FORECAST (07 to 14 April 2026)

PAYRA FAIRWAY (21° 22' N, 090° 6' E)



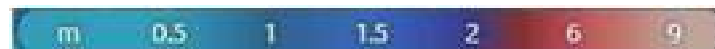
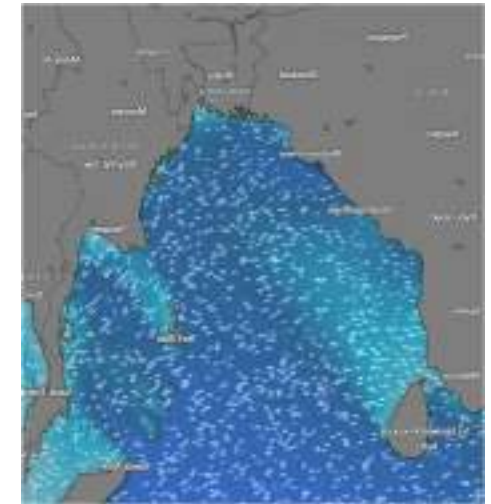
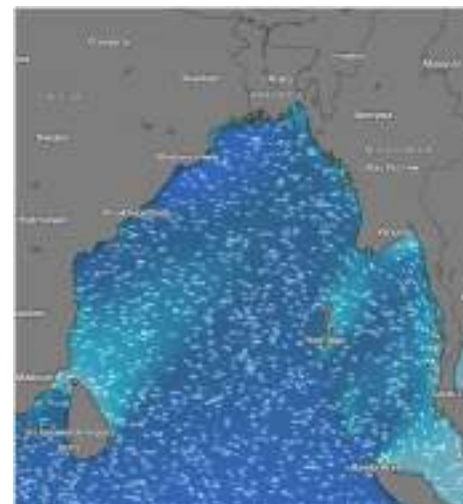
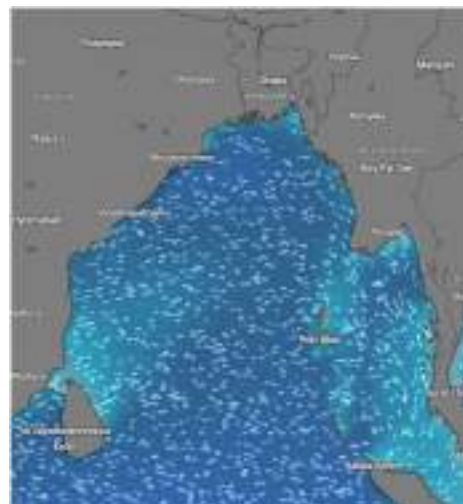
Date	Time	Air Temp (°C)		Sea Surface Temp (°C)	Baro Pressure (mbar)	Wind Direction	Wind Spd (kts)		Wae Ht (m)	Sea State	Humidity (%)	Prob of Rain (%)	Amount of Rain (mm)
		Max	Min				Gusting	Avg					
11-04-26 (Saturday)	0001	32	23	23	1009	SSW	12	08	0.9	3	88	09	0.0
	0600			22	1010	SW	15	11	1.0	3	90	14	0.0
	1200			29	1008	SW	14	10	1.0	3	76	12	0.0
	1800			26	1007	SW	15	11	1.1	3	87	16	0.0
12-04-26 (Sunday)	0001	31	22	23	1009	SSW	12	08	0.9	3	88	09	0.0
	0600			22	1010	SW	15	11	1.0	3	89	14	0.0
	1200			29	1009	SW	14	10	1.0	3	77	12	0.0
	1800			26	1007	SW	15	11	1.1	3	84	16	0.0
13-04-26 (Monday)	0001	31	23	24	1010	SSW	15	10	0.9	3	89	08	0.0
	0600			23	1011	S	14	09	1.0	3	90	13	0.0
	1200			29	1009	SW	13	09	1.0	3	78	14	0.0
	1800			27	1009	SSW	14	10	1.0	3	86	15	0.0
14-04-26 (Tuesday)	0001	31	23	24	1010	SW	15	10	1.0	3	90	12	0.0
	0600			23	1011	S	16	11	1.0	3	88	15	0.0
	1200			29	1009	SW	15	10	1.0	3	79	13	0.0
	1800			27	1009	SSW	13	08	1.0	3	84	14	0.0

11 Apr 2026

12 Apr 2026

13 Apr 2026

14 Apr 2026



Significant wave height (m)



MARINE WEATHER FORECAST (07 to 14 April 2026)

MONGLA FAIRWAY (21° 26' N, 089° 34' E)



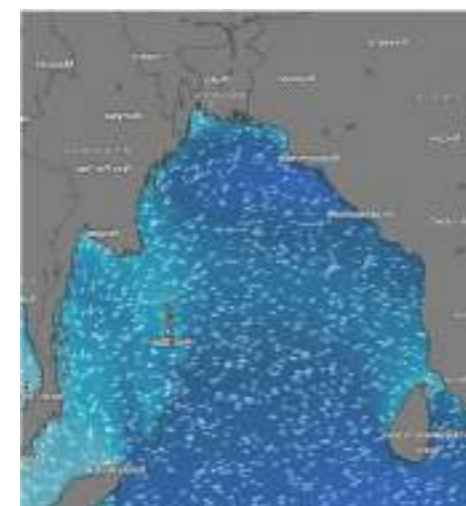
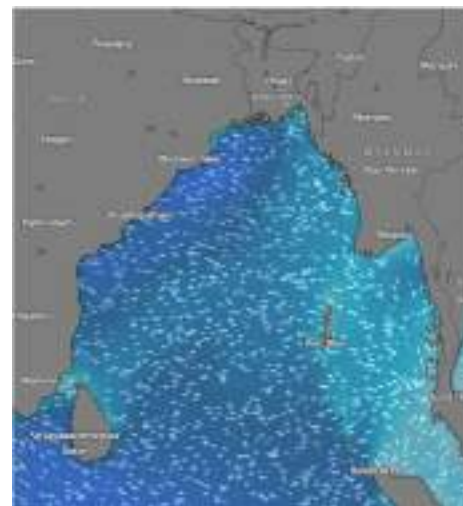
Date	Time	Air Temp (°C)		Sea Surface Temp (°C)	Baro Pressure (mbar)	Wind Direction	Wind Spd (kts)		Wave Ht (m)	Sea State	Humidity (%)	Prob of Rain (%)	Amount of Rain (mm)
		Max	Min				Gusting	Avg					
07-04-26 (Tuesday)	0001	31	23	23	1011	SSW	13	09	1.0	3	89	10	0.0
	0600			22	1012	SW	14	10	1.0	3	90	12	0.0
	1200			29	1010	SSW	13	09	1.0	3	75	09	0.0
	1800			26	1009	SSW	12	08	0.9	3	87	15	0.0
08-04-26 (Wednesday)	0001	32	23	23	1011	SSW	15	11	1.0	3	89	07	0.0
	0600			22	1012	SW	15	11	0.9	3	90	13	0.0
	1200			29	1010	SW	14	10	0.9	3	78	12	0.0
	1800			26	1009	SSW	12	08	0.8	3	83	18	0.0
09-04-26 (Thursday)	0001	32	24	24	1011	SSW	12	08	0.9	3	88	08	0.0
	0600			22	1012	W	14	10	1.1	3	90	16	0.0
	1200			29	1010	W	15	11	1.2	3	75	07	0.0
	1800			26	1009	SW	11	07	1.1	3	86	12	0.0
10-04-26 (Friday)	0001	32	24	23	1010	W	16	12	1.1	3	89	08	0.0
	0600			22	1011	SW	12	08	1.2	3	91	14	0.0
	1200			29	1010	SW	16	12	1.2	3	74	09	0.0
	1800			26	1009	SW	15	11	1.1	3	85	13	0.0

07 Apr 2026

08 Apr 2026

09 Apr 2026

10 Apr 2026



Significant wave height (m)



MARINE WEATHER FORECAST (07 to 14 April 2026)

MONGLA FAIRWAY (21° 26' N, 089° 34' E)



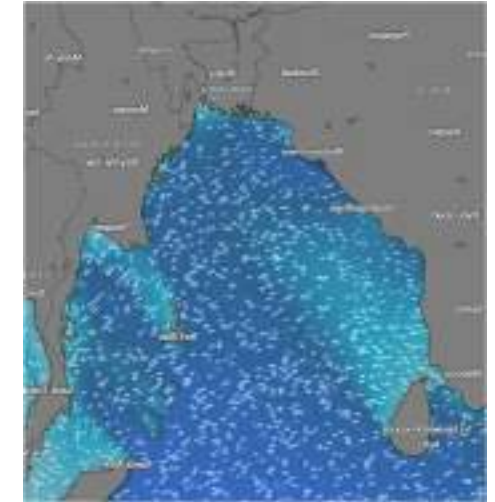
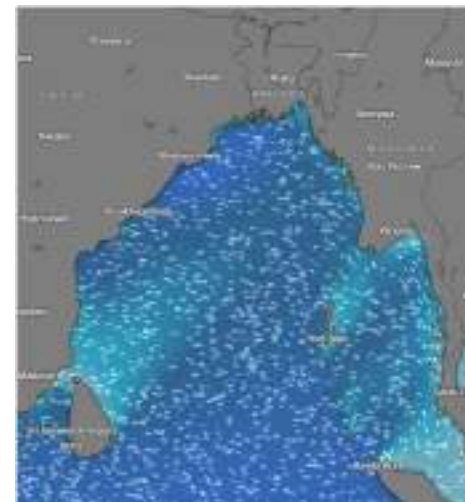
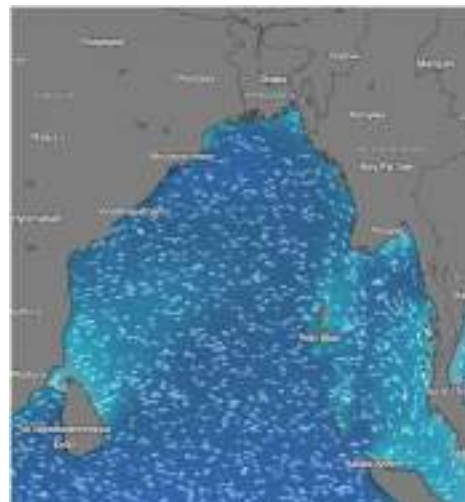
Date	Time	Air Temp (°C)		Sea Surface Temp (°C)	Baro Pressure (mbar)	Wind Direction	Wind Spd (kts)		Wave Ht (m)	Sea State	Humidity (%)	Prob of Rain (%)	Amount of Rain (mm)
		Max	Min				Gusting	Avg					
11-04-26 (Saturday)	0001	32	23	23	1009	SSW	14	10	1.0	3	88	07	0.0
	0600			22	1010	W	16	12	1.0	3	90	15	0.0
	1200			29	1008	W	15	11	1.1	3	75	08	0.0
	1800			26	1007	SW	16	12	1.1	3	86	14	0.0
12-04-26 (Sunday)	0001	31	23	23	1009	SSW	14	10	1.0	3	88	07	0.0
	0600			22	1010	W	16	12	1.0	3	90	15	0.0
	1200			29	1008	W	15	11	1.1	3	75	08	0.0
	1800			26	1007	SW	16	12	1.1	3	86	14	0.0
13-04-26 (Monday)	0001	31	22	23	1009	SSW	15	11	1.0	3	87	09	0.0
	0600			23	1011	W	16	12	1.0	3	88	14	0.0
	1200			28	1009	SW	14	10	0.9	3	79	09	0.0
	1800			26	1009	SSW	15	11	1.0	3	82	12	0.0
14-04-26 (Tuesday)	0001	31	22	23	1009	SSW	16	11	1.0	3	90	16	0.0
	0600			23	1011	SW	17	13	1.1	3	89	15	0.0
	1200			28	1009	SW	17	12	1.1	3	82	11	0.0
	1800			26	1009	W	14	11	1.0	3	85	14	0.0

11 Apr 2026

12 Apr 2026

13 Apr 2026

14 Apr 2026



Significant wave height (m)



MARINE WEATHER FORECAST (07 to 14 April 2026)

OUTER EEZ (18° 48' N, 090° 30' E)



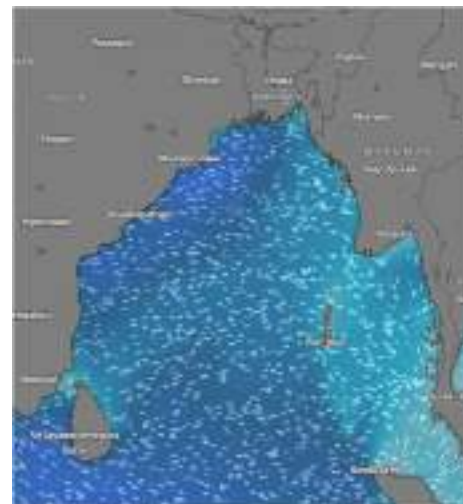
Date	Time	Air Temp (°C)		Sea Surface Temp (°C)	Baro Pressure (mbar)	Wind Direction	Wind Spd (kts)		Wave Ht (m)	Sea State	Humidity (%)	Prob of Rain (%)	Amount of Rain (mm)
		Max	Min				Gusting	Avg					
07-04-26 (Tuesday)	0001	31	23	23	1012	SW	12	08	1.0	3	90	12	0.0
	0600			22	1013	SSW	12	08	1.0	3	91	12	0.0
	1200			27	1011	W	11	07	1.0	3	74	08	0.0
	1800			26	1010	W	13	09	0.9	3	85	16	0.0
08-04-26 (Wednesday)	0001	31	22	23	1010	W	10	06	0.9	3	89	09	0.0
	0600			22	1011	W	11	07	0.8	3	90	12	0.0
	1200			27	1010	W	09	05	0.8	3	74	06	0.0
	1800			26	1009	SW	13	09	0.8	3	86	13	0.0
09-04-26 (Thursday)	0001	30	22	24	1010	SW	11	07	0.8	3	89	08	0.0
	0600			22	1011	SW	11	07	0.8	3	91	13	0.0
	1200			27	1010	W	09	05	0.9	3	74	12	0.0
	1800			26	1009	W	12	08	1.0	3	87	16	0.0
10-04-26 (Friday)	0001	31	22	23	1010	SW	15	11	1.1	3	90	09	0.0
	0600			22	1012	SW	17	13	1.1	3	92	15	0.0
	1200			27	1010	NW	14	10	1.1	3	76	11	0.0
	1800			26	1009	SW	16	12	1.1	3	88	17	0.0

07 Apr 2026

08 Apr 2026

09 Apr 2026

10 Apr 2026



Significant wave height (m)



MARINE WEATHER FORECAST (07 to 14 April 2026)

OUTER EEZ (18° 48' N, 090° 30' E)



Date	Time	Air Temp (°C)		Sea Surface Temp (°C)	Baro Pressure (mbar)	Wind Direction	Wind Spd (kts)		Wave Ht (m)	Sea State	Humidity (%)	Prob of Rain (%)	Amount of Rain (mm)
		Max	Min				Gusting	Avg					
11-04-26 (Saturday)	0001	31	22	23	1010	SW	17	13	1.2	3	90	08	0.0
	0600			22	1011	SW	16	12	1.2	3	92	13	0.0
	1200			27	1010	W	18	13	1.2	3	74	12	0.0
	1800			26	1009	W	14	10	1.2	3	86	16	0.0
12-04-26 (Sunday)	0001	31	22	23	1010	SW	17	13	1.2	3	89	08	0.0
	0600			22	1011	SW	16	12	1.2	3	90	13	0.0
	1200			27	1010	W	18	13	1.2	3	77	12	0.0
	1800			26	1009	W	14	10	1.2	3	85	16	0.0
13-04-26 (Monday)	0001	31	22	23	1010	SW	15	11	1.2	3	90	10	0.0
	0600			22	1011	SW	17	13	1.2	3	91	14	0.0
	1200			27	1010	SSW	16	11	1.1	3	79	13	0.0
	1800			26	1009	SW	15	10	1.1	3	88	15	0.0
14-04-26 (Tuesday)	0001	31	22	23	1010	SSW	11	08	1.0	3	91	12	0.0
	0600			22	1011	SW	13	09	1.0	3	92	15	0.0
	1200			27	1010	SSW	12	07	1.0	3	80	12	0.0
	1800			26	1009	SW	10	06	1.0	3	85	14	0.0

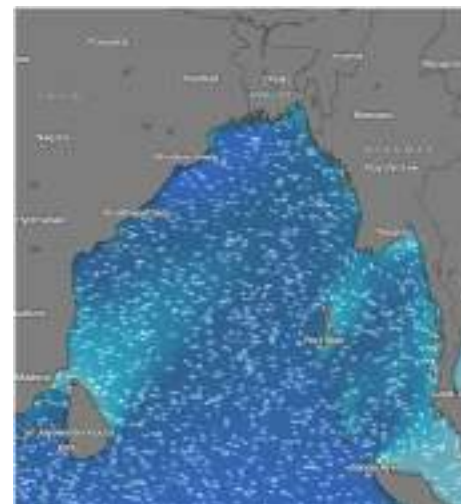
11 Apr 2026



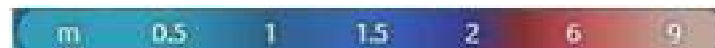
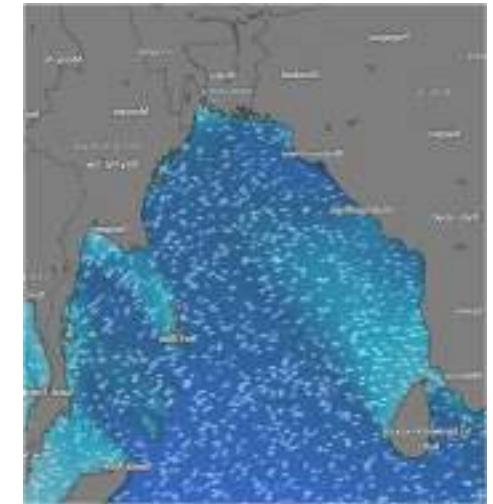
12 Apr 2026



13 Apr 2026



14 Apr 2026



Significant wave height (m)



PREDICTED SURFACE PRESSURE FORECAST (07 to 14 Apr 2026)



07 Apr 2026



08 Apr 2026



09 Apr 2026



10 Apr 2026



11 Apr 2026



12 Apr 2026



13 Apr 2026

