



**SUMMARY OF MARINE WEATHER FORECAST**  
**COASTAL AREA OF BANGLADESH**  
**DATE: 07 to 14 Mar 2025**



Fleet forecast	Seasonal low lies over the South Bay.
Wind direction, speed	West/North-westerly 8 kts, (Temporary gusting up to 18 kts).
Wave height & sea state	Wave height: 0.1 to 1.1 m (Sea state:1 to 3).
Sea surface temperature	23°C - 27°C (May remain nearly unchanged).
Baro pressure	1009-1013 mb.
Rainfall	Partly cloudy sky over Bay of Bengal & adjoining area.
Fog	Light fog may occur over the coastal area during late night to early morning.

**Outlook for 07 to 14 Mar 2025:** Weather may remain dry with partly cloudy sky. Night and day temperature may rise.



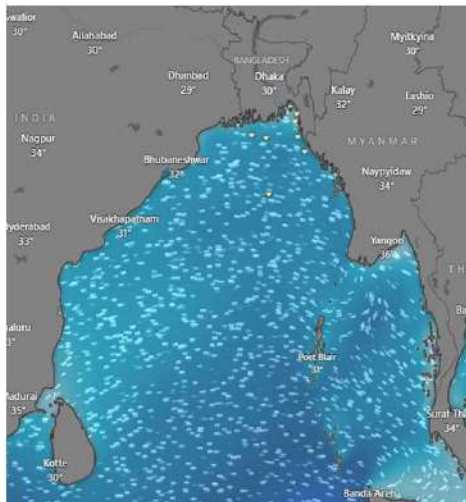
# MARINE WEATHER FORECAST (07 to 14 Mar 2025)

## PATENGA POINT (22° 12' N, 091° 38' E)

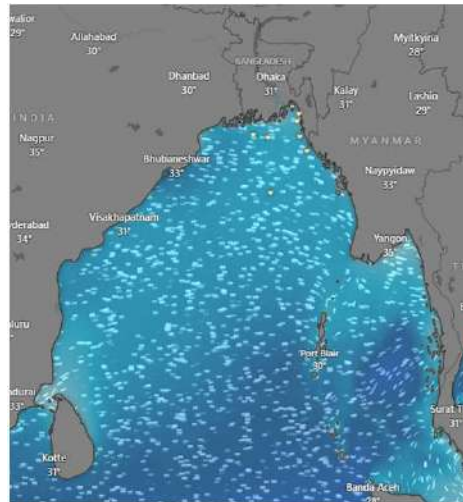


Date	Time	Air Temp (°C)		Sea Surface Temp (°C)	Baro Pressure (mbar)	Wind Direction	Wind Spd (kts)		Wave Ht (m)	Sea State	Humidity (%)	Prob of Rain (%)	Amount of Rain (mm)
		Max	Min				Gusting	Avg					
07-03-25 (Friday)	0001	31	20	24	1009	NNE	6	3	0.1	1	87	7	0.0
	0600			23	1012	NW	9	6	0.2	2	90	8	0.0
	1200			27	1010	W	11	7	0.2	2	51	3	0.0
	1800			25	1011	SW	12	7	0.2	2	73	5	0.0
08-03-25 (Saturday)	0001	31	20	24	1009	NW	10	4	0.2	2	88	7	0.0
	0600			23	1012	SE	9	5	0.2	2	91	8	0.0
	1200			27	1010	SSW	13	8	0.2	2	54	2	0.0
	1800			25	1011	SW	12	7	0.2	2	75	5	0.0
09-03-25 (Sunday)	0001	31	20	24	1009	SW	9	3	0.2	2	87	7	0.0
	0600			23	1012	E	9	5	0.2	2	92	9	0.0
	1200			27	1010	NW	13	8	0.1	1	53	3	0.0
	1800			25	1011	NW	14	7	0.2	2	76	6	0.0
10-03-25 (Monday)	0001	31	21	24	1009	NNE	10	6	0.2	2	89	8	0.0
	0600			23	1012	NNE	10	6	0.2	2	92	9	0.0
	1200			27	1010	NNW	9	6	0.2	2	54	3	0.0
	1800			25	1011	NNW	12	7	0.2	2	75	6	0.0

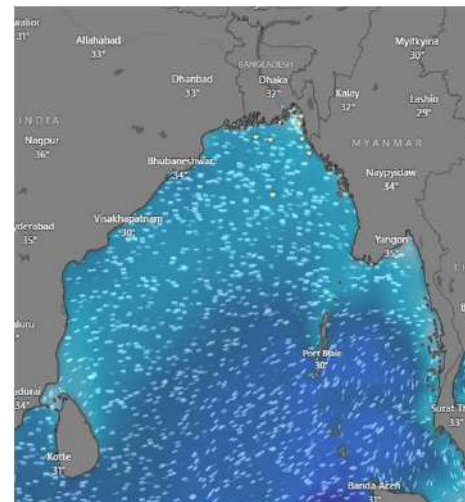
**07 Mar 2025**



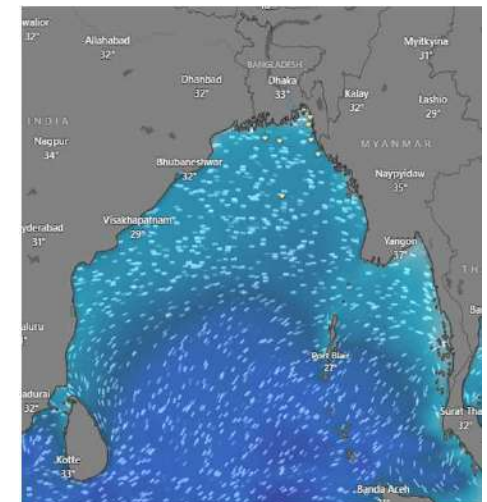
**08 Mar 2025**



**09 Mar 2025**



**10 Mar 2025**



Significant wave height (m)



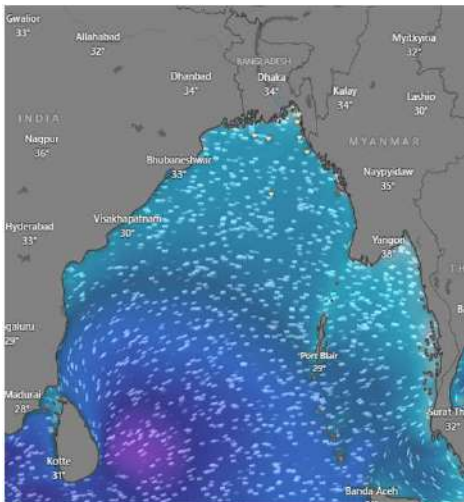
# MARINE WEATHER FORECAST (07 to 14 Mar 2025)

## PATENGA POINT (22° 12' N, 091° 38' E)

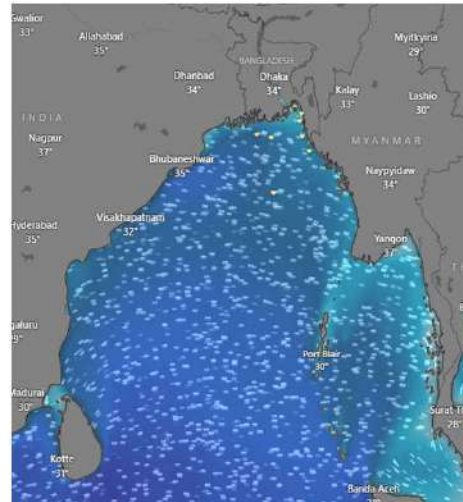


Date	Time	Air Temp (°C)		Sea Surface Temp (°C)	Baro Pressure (mbar)	Wind Direction	Wind Spd (kts)		Wave Ht (m)	Sea State	Humidity (%)	Prob of Rain (%)	Amount of Rain (mm)
		Max	Min				Gusting	Avg					
11-03-25 (Tuesday)	0001	31	21	25	1009	N	8	5	0.2	2	89	7	0.0
	0600			24	1012	NNE	9	4	0.2	2	90	9	0.0
	1200			27	1010	W	11	7	0.2	2	51	3	0.0
	1800			25	1011	W	10	6	0.3	2	74	7	0.0
12-03-25 (Wednesday)	0001	31	21	25	1009	W	12	5	0.2	2	88	4	0.0
	0600			24	1012	E	10	7	0.3	2	91	7	0.0
	1200			27	1010	SSW	14	9	0.3	2	54	2	0.0
	1800			25	1011	SSW	13	8	0.3	2	78	6	0.0
13-03-25 (Thursday)	0001	31	21	25	1009	SSW	12	9	0.4	2	87	6	0.0
	0600			24	1012	SSE	14	7	0.4	2	90	7	0.0
	1200			27	1010	SSW	16	13	0.4	2	52	3	0.0
	1800			25	1011	SW	15	11	0.4	2	75	6	0.0
14-03-25 (Friday)	0001	31	21	25	1009	S	14	8	0.4	2	88	7	0.0
	0600			24	1012	SSE	13	6	0.4	2	90	8	0.0
	1200			27	1010	SSW	15	11	0.4	2	53	4	0.0
	1800			25	1011	SSW	14	10	0.4	2	76	5	0.0

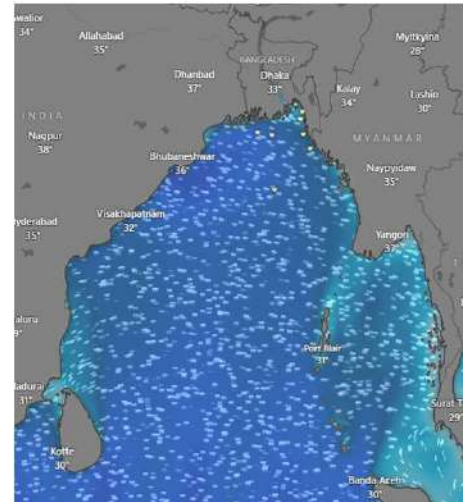
**11 Mar 2025**



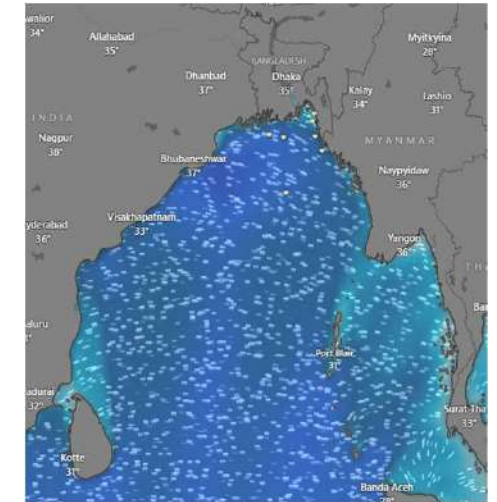
**12 Mar 2025**



**13 Mar 2025**



**14 Mar 2025**



Significant wave height (m)



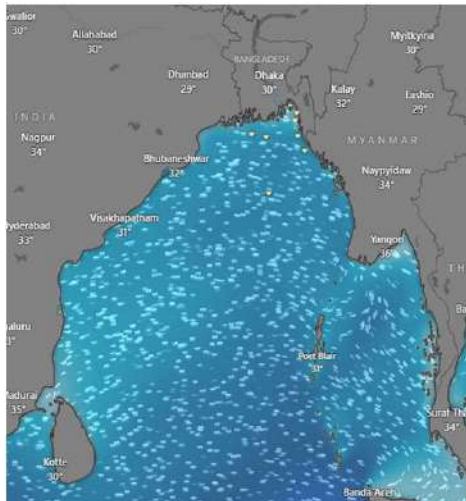
# MARINE WEATHER FORECAST (07 to 14 Mar 2025)

## ABEAM TO KUTUBDIA (21° 51' N, 091° 40' E)

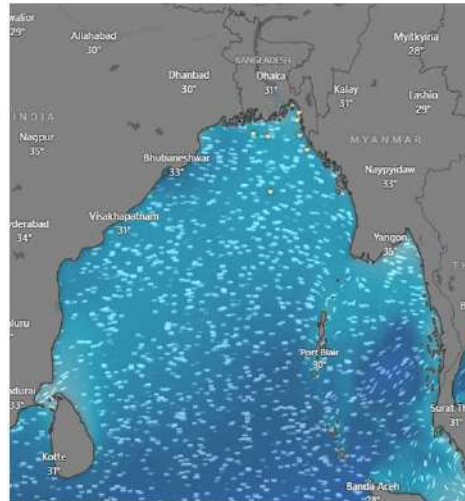


Date	Time	Air Temp (°C)		Sea Surface Temp (°C)	Baro Pressure (mbar)	Wind Direction	Wind Spd (kts)		Wave Ht (m)	Sea State	Humidity (%)	Prob of Rain (%)	Amount of Rain (mm)
		Max	Min				Gusting	Avg					
07-03-25 (Friday)	0001	31	20	24	1009	N	11	8	0.3	2	87	7	0.0
	0600			23	1012	N	13	7	0.3	2	89	9	0.0
	1200			27	1010	NW	10	4	0.3	2	45	3	0.0
	1800			25	1011	W	9	9	0.2	2	56	6	0.0
08-03-25 (Saturday)	0001	31	20	24	1009	W	11	9	0.3	2	88	5	0.0
	0600			23	1012	SE	12	7	0.3	2	90	7	0.0
	1200			27	1010	SSW	11	9	0.3	2	54	2	0.0
	1800			25	1011	W	14	11	0.3	2	75	6	0.0
09-03-25 (Sunday)	0001	31	21	24	1009	SW	8	3	0.3	2	89	6	0.0
	0600			23	1012	SSE	10	5	0.3	2	91	9	0.0
	1200			27	1010	SW	7	3	0.2	2	52	2	0.0
	1800			25	1011	W	11	9	0.3	2	76	5	0.0
10-03-25 (Monday)	0001	31	21	24	1009	SW	11	6	0.3	2	88	6	0.0
	0600			23	1012	SSE	14	11	0.4	2	92	9	0.0
	1200			27	1010	SW	12	7	0.4	2	54	2	0.0
	1800			25	1011	W	13	9	0.4	2	73	5	0.0

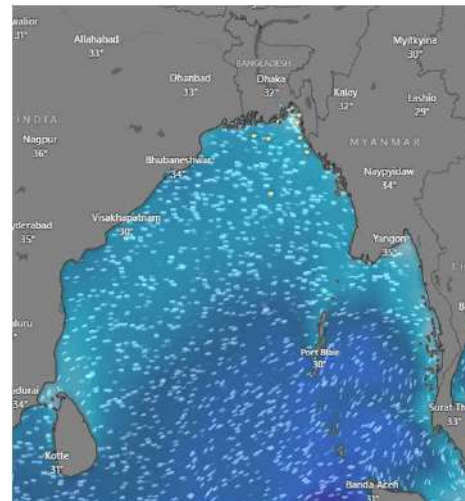
**07 Mar 2025**



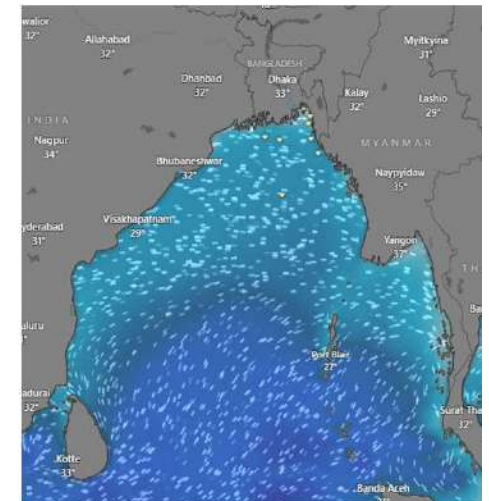
**08 Mar 2025**



**09 Mar 2025**



**10 Mar 2025**



Significant wave height (m)



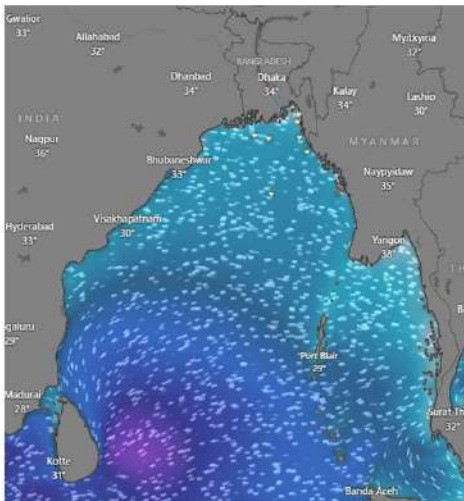
# MARINE WEATHER FORECAST (07 to 14 Mar 2025)

## ABEAM TO KUTUBDIA (21° 51' N, 091° 40' E)

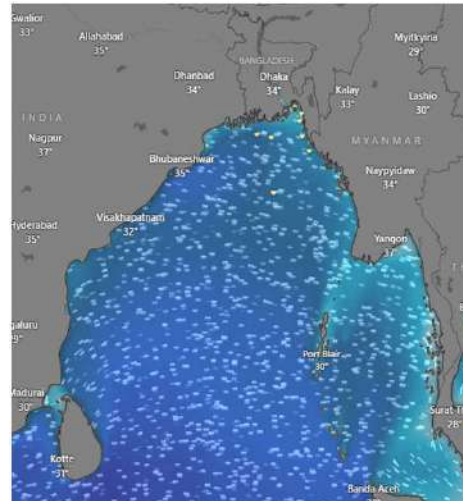


Date	Time	Air Temp (°C)		Sea Surface Temp (°C)	Baro Pressure (mbar)	Wind Direction	Wind Spd (kts)		Wave Ht (m)	Sea State	Humidity (%)	Prob of Rain (%)	Amount of Rain (mm)
		Max	Min				Gusting	Avg					
11-03-25 (Tuesday)	0001	31	20	24	1009	SSW	12	8	0.4	2	88	7	0.0
	0600			23	1012	SE	11	7	0.3	2	90	9	0.0
	1200			27	1010	SW	8	6	0.3	2	54	3	0.0
	1800			25	1011	SSW	13	10	0.3	2	73	7	0.0
12-03-25 (Wednesday)	0001	31	20	24	1009	SSW	10	6	0.3	2	89	5	0.0
	0600			23	1012	S	12	7	0.4	2	90	7	0.0
	1200			27	1010	S	13	10	0.4	2	53	2	0.0
	1800			25	1011	SW	17	12	0.4	2	74	6	0.0
13-03-25 (Thursday)	0001	31	20	24	1009	SW	14	9	0.4	2	87	6	0.0
	0600			23	1012	SE	15	11	0.4	2	90	8	0.0
	1200			27	1010	SW	17	10	0.5	2	54	2	0.0
	1800			25	1011	SSW	16	12	0.5	2	75	7	0.0
14-03-25 (Friday)	0001	31	20	24	1009	SSW	15	12	0.4	2	88	7	0.0
	0600			23	1012	SE	16	13	0.4	2	90	9	0.0
	1200			27	1010	SW	12	10	0.4	2	54	4	0.0
	1800			25	1011	SSW	15	12	0.4	2	76	6	0.0

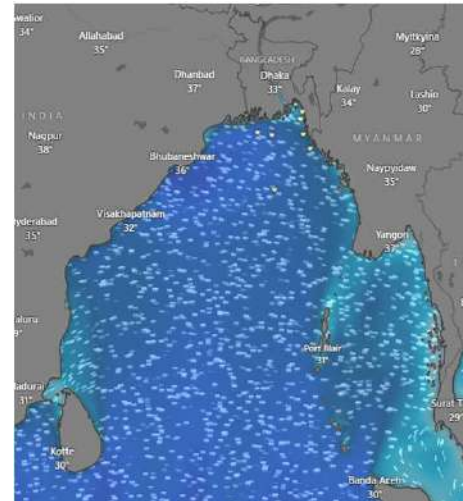
**11 Mar 2025**



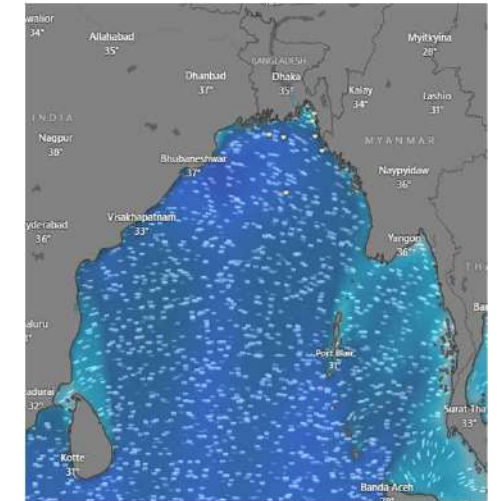
**12 Mar 2025**



**13 Mar 2025**



**14 Mar 2025**



Significant wave height (m)

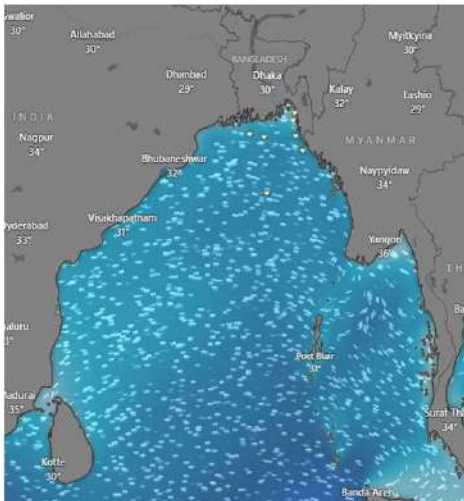


# MARINE WEATHER FORECAST (07 to 14 Mar 2025) ABEAM TO ELEPHANT POINT (21° 11' N, 091° 52' E)

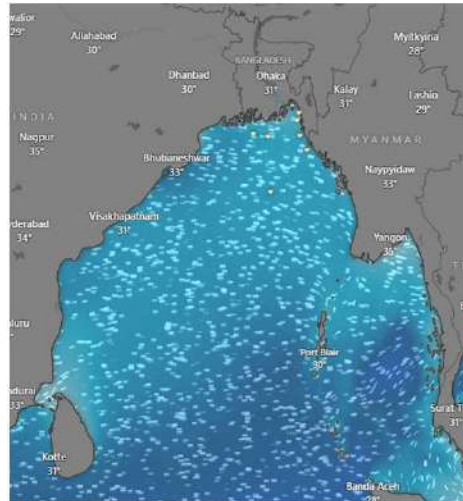


Date	Time	Air Temp (°C)		Sea Surface Temp (°C)	Baro Pressure (mbar)	Wind Direction	Wind Spd (kts)		Wave Ht (m)	Sea State	Humidity (%)	Prob of Rain (%)	Amount of Rain (mm)
		Max	Min				Gusting	Avg					
07-03-25 (Friday)	0001	31	20	24	1009	NNW	11	8	0.5	2	87	6	0.0
	0600			23	1013	N	10	9	0.5	2	89	8	0.0
	1200			27	1010	NNW	10	7	0.5	2	53	2	0.0
	1800			25	1012	W	9	9	0.4	2	64	7	0.0
08-03-25 (Saturday)	0001	31	20	24	1009	W	11	7	0.5	2	87	6	0.0
	0600			23	1013	E	7	4	0.4	2	89	8	0.0
	1200			27	1010	SW	8	4	0.4	2	52	3	0.0
	1800			25	1012	W	13	10	0.5	2	66	5	0.0
09-03-25 (Sunday)	0001	31	20	24	1009	SW	9	5	0.5	2	88	8	0.0
	0600			23	1013	SE	6	4	0.4	2	90	9	0.0
	1200			27	1010	SW	6	4	0.4	2	53	3	0.0
	1800			25	1012	NW	12	13	0.5	2	67	6	0.0
10-03-25 (Monday)	0001	31	21	24	1009	NNW	13	7	0.6	3	89	7	0.0
	0600			23	1013	NNE	12	9	0.6	3	92	8	0.0
	1200			27	1010	NNW	11	5	0.6	3	54	2	0.0
	1800			25	1012	NNW	15	12	0.6	3	68	5	0.0

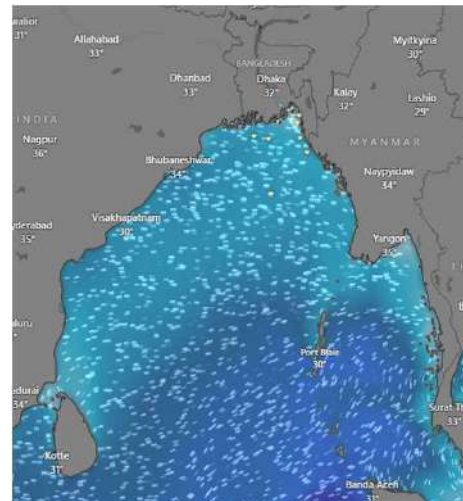
**07 Mar 2025**



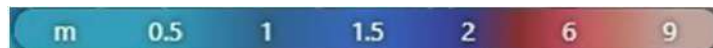
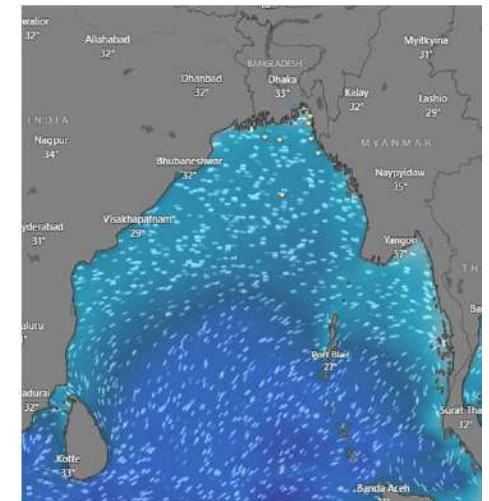
**08 Mar 2025**



**09 Mar 2025**



**10 Mar 2025**



Significant wave height (m)

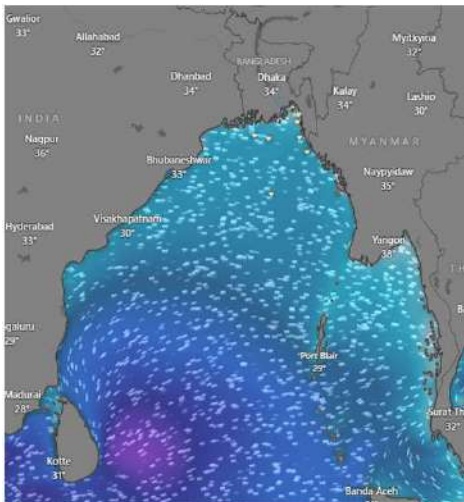


# MARINE WEATHER FORECAST (07 to 14 Mar 2025) ABEAM TO ELEPHANT POINT (21° 11' N, 091° 52' E)

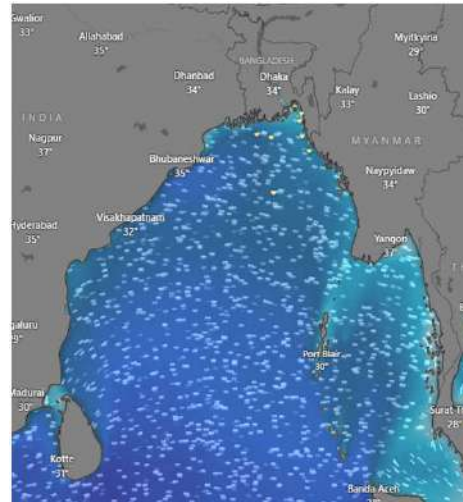


Date	Time	Air Temp (°C)		Sea Surface Temp (°C)	Baro Pressure (mbar)	Wind Direction	Wind Spd (kts)		Wave Ht (m)	Sea State	Humidity (%)	Prob of Rain (%)	Amount of Rain (mm)
		Max	Min				Gusting	Avg					
11-03-25 (Tuesday)	0001	31	21	24	1009	SW	13	9	0.7	3	87	7	0.0
	0600			23	1013	SW	10	7	0.8	3	91	8	0.0
	1200			27	1010	S	10	8	0.8	3	54	2	0.0
	1800			25	1012	SSW	12	7	0.8	3	75	6	0.0
12-03-25 (Wednesday)	0001	31	21	24	1009	SSW	12	9	0.9	3	88	7	0.0
	0600			23	1013	SW	11	8	0.9	3	90	9	0.0
	1200			27	1010	SSW	10	7	0.9	3	54	3	0.0
	1800			25	1012	SSW	11	8	0.9	3	75	6	0.0
13-03-25 (Thursday)	0001	31	21	24	1009	SW	13	9	0.9	3	88	7	0.0
	0600			23	1013	SW	12	8	0.9	3	90	9	0.0
	1200			27	1010	SSW	10	7	0.9	3	54	3	0.0
	1800			25	1012	SSW	9	6	0.9	3	75	6	0.0
14-03-25 (Friday)	0001	31	21	24	1009	SSW	13	8	0.9	3	89	6	0.0
	0600			23	1013	SW	11	7	0.9	3	92	8	0.0
	1200			27	1010	SSW	10	5	0.9	3	54	3	0.0
	1800			25	1012	SSW	11	8	0.9	3	76	7	0.0

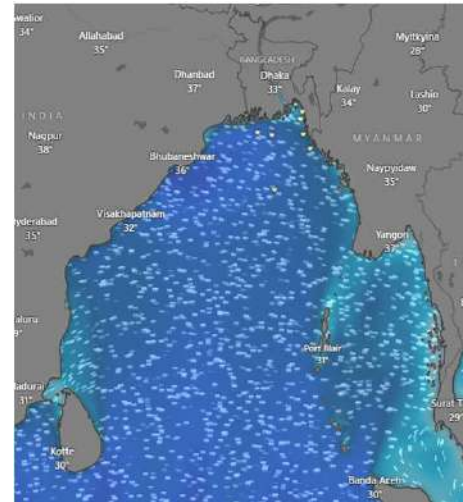
**11 Mar 2025**



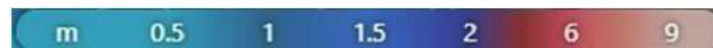
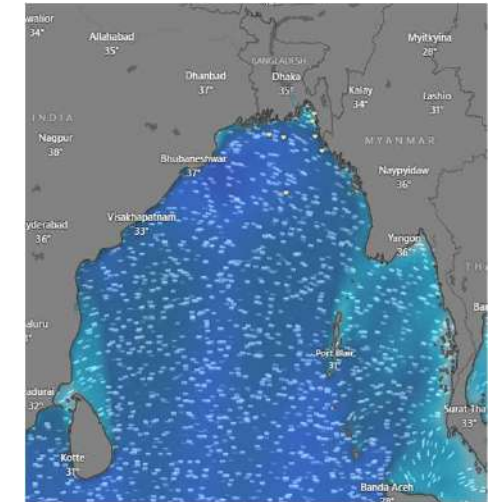
**12 Mar 2025**



**13 Mar 2025**



**14 Mar 2025**



Significant wave height (m)



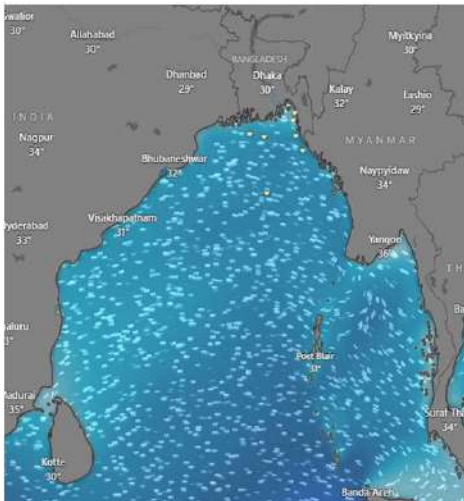
# MARINE WEATHER FORECAST (07 to 14 Mar 2025)

## ABEAM TO ST. MARTIN'S LIGHT HOUSE (20° 37' N, 092° 08' E)

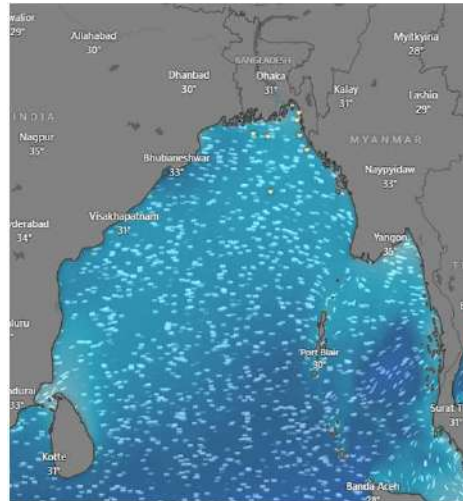


Date	Time	Air Temp (°C)		Sea Surface Temp (°C)	Baro Pressure (mbar)	Wind Direction	Wind Spd (kts)		Wave Ht (m)	Sea State	Humidity (%)	Prob of Rain (%)	Amount of Rain (mm)
		Max	Min				Gusting	Avg					
07-03-25 (Friday)	0001	31	21	24	1009	N	12	9	0.6	3	92	8	0.0
	0600			23	1013	NNW	10	7	0.6	3	95	9	0.0
	1200			27	1010	NNW	14	11	0.6	3	64	3	0.0
	1800			25	1012	W	12	10	0.6	3	69	6	0.0
08-03-25 (Saturday)	0001	31	21	24	1009	NNW	13	8	0.6	3	85	6	0.0
	0600			23	1013	NNE	9	6	0.5	2	88	7	0.0
	1200			27	1010	SW	5	4	0.4	2	54	2	0.0
	1800			25	1012	W	13	10	0.6	3	70	5	0.0
09-03-25 (Sunday)	0001	31	21	24	1009	NNW	13	7	0.6	3	87	6	0.0
	0600			23	1013	NNW	8	5	0.4	2	92	8	0.0
	1200			27	1010	W	7	4	0.5	2	55	2	0.0
	1800			25	1012	NW	15	12	0.6	3	74	6	0.0
10-03-25 (Monday)	0001	31	21	24	1009	NNW	14	10	0.6	3	88	7	0.0
	0600			23	1013	N	13	8	0.6	3	92	9	0.0
	1200			27	1010	SW	7	3	0.6	3	54	3	0.0
	1800			25	1012	NW	12	9	0.6	3	76	5	0.0

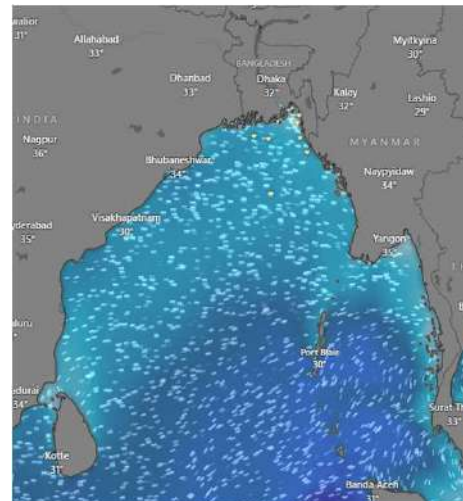
**07 Mar 2025**



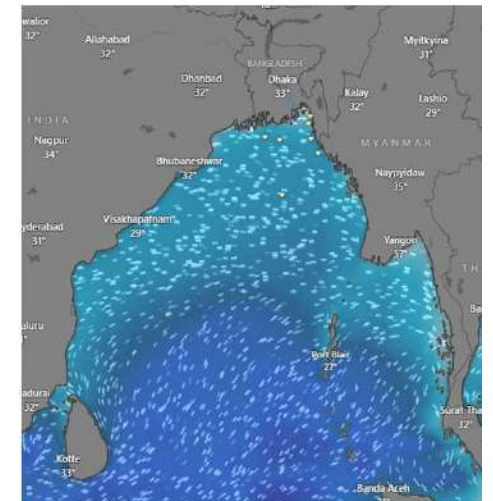
**08 Mar 2025**



**09 Mar 2025**



**10 Mar 2025**



Significant wave height (m)





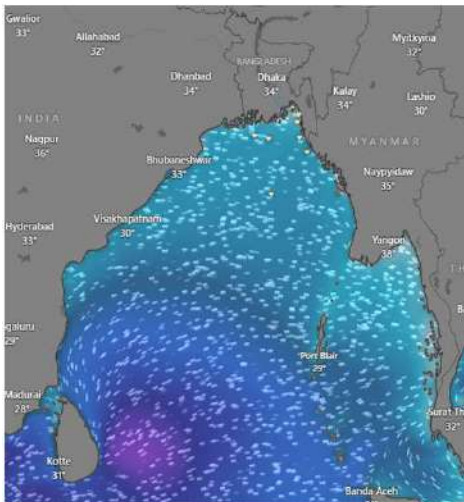
# MARINE WEATHER FORECAST (07 to 14 Mar 2025)

## ABEAM TO ST. MARTIN'S LIGHT HOUSE (20° 37' N, 092° 08' E)

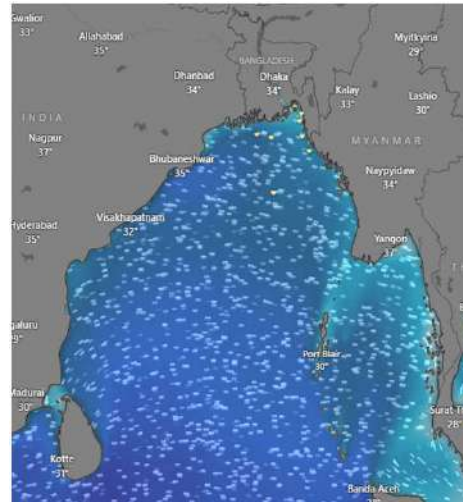


Date	Time	Air Temp (°C)		Sea Surface Temp (°C)	Baro Pressure (mbar)	Wind Direction	Wind Spd (kts)		Wave Ht (m)	Sea State	Humidity (%)	Prob of Rain (%)	Amount of Rain (mm)
		Max	Min				Gusting	Avg					
11-03-25 (Tuesday)	0001	31	21	24	1009	NNW	10	9	0.7	3	89	7	0.0
	0600			23	1013	N	16	12	0.6	3	94	9	0.0
	1200			27	1010	NW	10	8	0.6	3	56	4	0.0
	1800			25	1012	NW	17	11	0.7	3	76	6	0.0
12-03-25 (Wednesday)	0001	31	21	24	1009	NNW	15	8	0.7	3	86	6	0.0
	0600			23	1013	SSE	10	5	0.7	3	89	7	0.0
	1200			27	1010	SW	8	7	0.8	3	52	3	0.0
	1800			25	1012	SW	17	11	1.0	3	73	5	0.0
13-03-25 (Thursday)	0001	31	21	24	1009	SW	14	6	0.9	3	88	6	0.0
	0600			23	1013	SSE	9	7	0.9	3	92	7	0.0
	1200			27	1010	SW	12	8	1.0	3	52	3	0.0
	1800			25	1012	SW	12	8	1.0	3	74	5	0.0
14-03-25 (Friday)	0001	31	21	24	1009	SW	14	7	0.9	3	89	7	0.0
	0600			23	1013	SSE	12	8	0.9	3	92	9	0.0
	1200			27	1010	SSW	9	6	1.0	3	54	3	0.0
	1800			25	1012	W	13	9	1.0	3	75	6	0.0

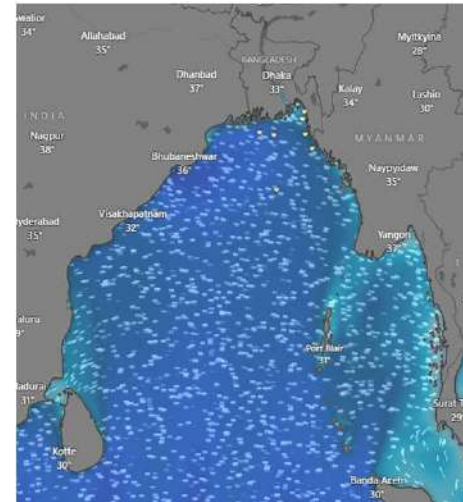
**11 Mar 2025**



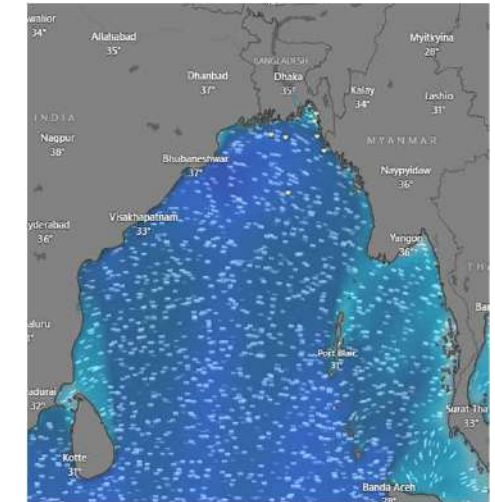
**12 Mar 2025**



**13 Mar 2025**



**14 Mar 2025**



Significant wave height (m)



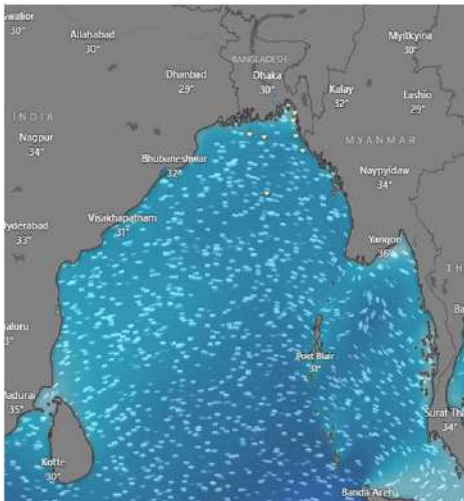
# MARINE WEATHER FORECAST (07 to 14 Mar 2025)

## PAYRA FAIRWAY (21° 22' N, 090° 6' E)

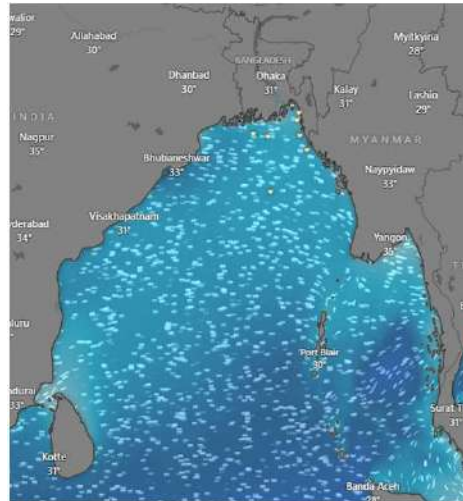


Date	Time	Air Temp (°C)		Sea Surface Temp (°C)	Baro Pressure (mbar)	Wind Direction	Wind Spd (kts)		Wave Ht (m)	Sea State	Humidity (%)	Prob of Rain (%)	Amount of Rain (mm)
		Max	Min				Gusting	Avg					
07-03-25 (Friday)	0001	31	21	24	1009	NNW	13	9	0.7	3	89	7	0.0
	0600			23	1013	NW	16	10	0.7	3	90	9	0.0
	1200			26	1010	N	9	5	0.7	3	54	3	0.0
	1800			25	1012	SSW	11	8	0.6	3	66	5	0.0
08-03-25 (Saturday)	0001	31	21	24	1009	W	12	7	0.6	3	88	5	0.0
	0600			23	1013	SW	8	5	0.6	3	91	8	0.0
	1200			26	1010	SW	9	6	0.5	2	55	2	0.0
	1800			25	1012	SSW	11	9	0.5	2	67	7	0.0
09-03-25 (Sunday)	0001	31	22	24	1009	SW	10	7	0.5	2	87	6	0.0
	0600			23	1013	SW	11	5	0.5	2	93	8	0.0
	1200			26	1010	S	8	4	0.6	3	54	3	0.0
	1800			25	1012	SW	7	5	0.6	3	67	8	0.0
10-03-25 (Monday)	0001	31	22	24	1009	SW	11	8	0.5	2	88	7	0.0
	0600			23	1013	SW	9	6	0.5	2	92	9	0.0
	1200			26	1010	S	8	5	0.6	3	54	3	0.0
	1800			25	1012	W	7	4	0.6	3	72	6	0.0

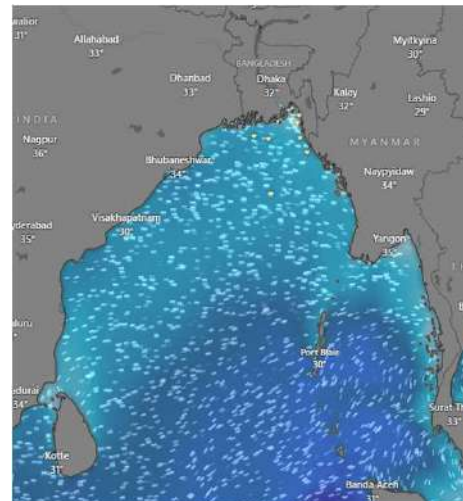
**07 Mar 2025**



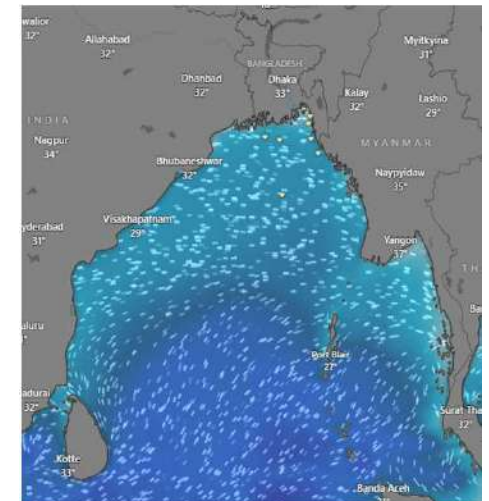
**08 Mar 2025**



**09 Mar 2025**



**10 Mar 2025**



Significant wave height (m)



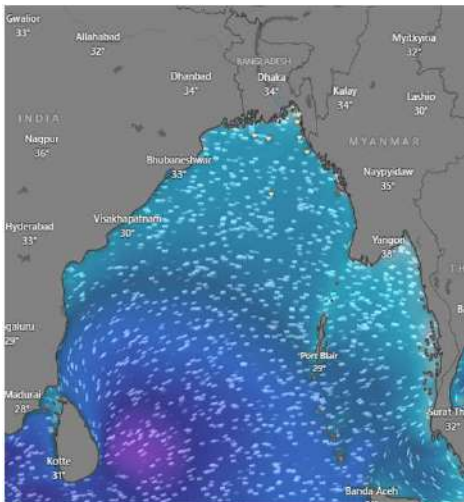
# MARINE WEATHER FORECAST (07 to 14 Mar 2025)

## PAYRA FAIRWAY (21° 22' N, 090° 6' E)

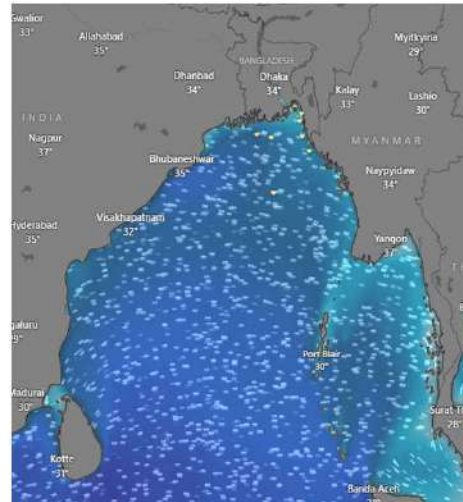


Date	Time	Air Temp (°C)		Sea Surface Temp (°C)	Baro Pressure (mbar)	Wind Direction	Wind Spd (kts)		Wave Ht (m)	Sea State	Humidity (%)	Prob of Rain (%)	Amount of Rain (mm)
		Max	Min				Gusting	Avg					
11-03-25 (Tuesday)	0001	31	21	24	1009	NW	14	10	0.6	3	89	8	0.0
	0600			23	1013	W	9	5	0.6	3	90	9	0.0
	1200			26	1010	NW	8	7	0.6	3	54	5	0.0
	1800			25	1012	W	11	8	0.6	3	75	7	0.0
12-03-25 (Wednesday)	0001	31	21	24	1009	SW	14	9	0.8	3	86	5	0.0
	0600			23	1013	W	13	10	0.9	3	88	8	0.0
	1200			26	1010	SW	13	6	0.9	3	53	4	0.0
	1800			25	1012	SSW	16	10	1.0	3	74	6	0.0
13-03-25 (Thursday)	0001	31	21	24	1009	SSW	16	13	1.1	3	87	5	0.0
	0600			23	1013	SW	17	14	1.1	3	89	8	0.0
	1200			26	1010	SW	17	12	1.1	3	54	4	0.0
	1800			25	1012	SW	18	13	1.1	3	75	6	0.0
14-03-25 (Friday)	0001	31	21	24	1009	SW	17	12	1.0	3	88	6	0.0
	0600			23	1013	SW	18	14	1.1	3	90	7	0.0
	1200			26	1010	S	13	12	1.0	3	54	5	0.0
	1800			25	1012	SSW	18	15	1.1	3	76	7	0.0

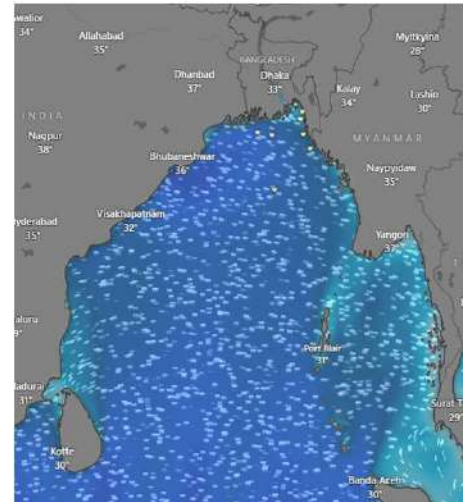
**11 Mar 2025**



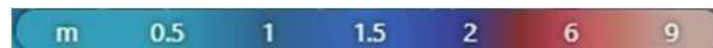
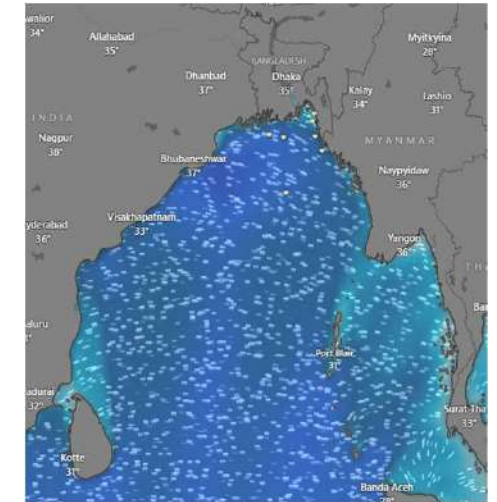
**12 Mar 2025**



**13 Mar 2025**



**14 Mar 2025**



Significant wave height (m)



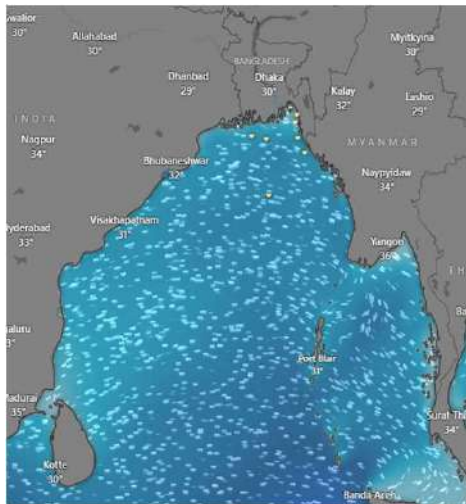
# MARINE WEATHER FORECAST (07 to 14 Mar 2025)

## MONGLA FAIRWAY (21° 26' N, 089° 34' E)

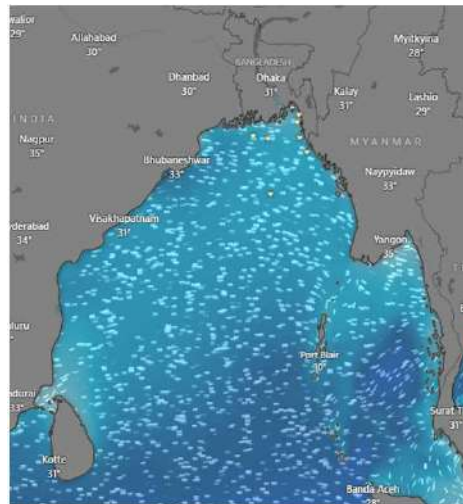


Date	Time	Air Temp (°C)		Sea Surface Temp (°C)	Baro Pressure (mbar)	Wind Direction	Wind Spd (kts)		Wave Ht (m)	Sea State	Humidity (%)	Prob of Rain (%)	Amount of Rain (mm)
		Max	Min				Gusting	Avg					
07-03-25 (Friday)	0001	31	20	23	1009	NNW	14	9	0.7	3	87	8	0.0
	0600			22	1013	NNE	10	7	0.7	3	89	9	0.0
	1200			26	1010	W	6	6	0.6	3	53	3	0.0
	1800			24	1012	SSW	15	10	0.7	3	66	6	0.0
08-03-25 (Saturday)	0001	31	20	23	1009	SW	13	8	0.7	3	83	7	0.0
	0600			22	1013	SW	10	7	0.6	3	89	8	0.0
	1200			26	1010	SW	12	8	0.6	3	55	3	0.0
	1800			24	1012	S	15	11	0.6	3	67	6	0.0
09-03-25 (Sunday)	0001	31	20	23	1009	SW	11	7	0.7	3	87	6	0.0
	0600			22	1013	SW	13	9	0.6	3	90	8	0.0
	1200			26	1010	SSW	10	7	0.6	3	54	3	0.0
	1800			24	1012	SW	9	6	0.6	3	68	6	0.0
10-03-25 (Monday)	0001	31	20	23	1009	SW	11	9	0.7	3	88	7	0.0
	0600			22	1013	SW	14	10	0.7	3	90	9	0.0
	1200			26	1010	SSW	12	8	0.7	3	52	3	0.0
	1800			24	1012	S	10	7	0.6	3	64	5	0.0

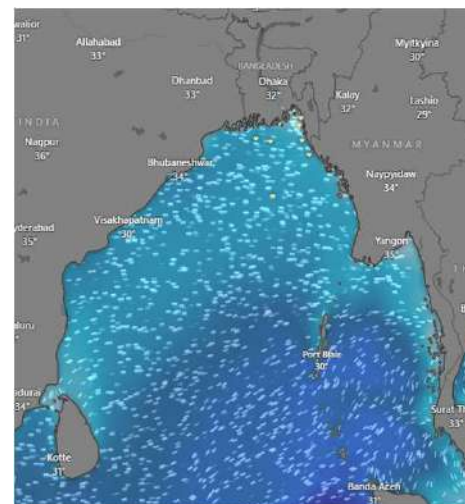
**07 Mar 2025**



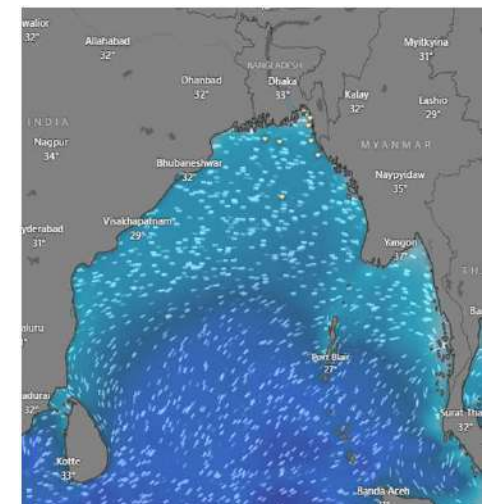
**08 Mar 2025**



**09 Mar 2025**



**10 Mar 2025**



Significant wave height (m)



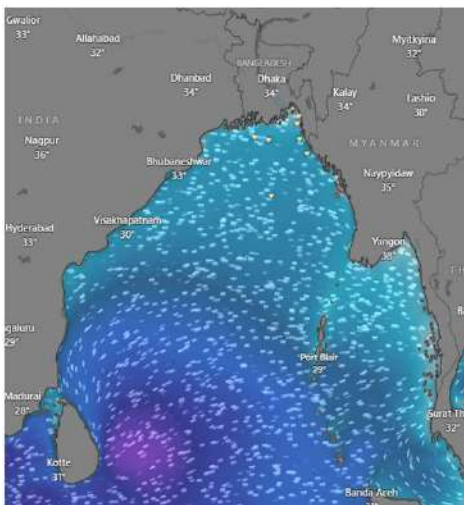
# MARINE WEATHER FORECAST (07 to 14 Mar 2025)

## MONGLA FAIRWAY (21° 26' N, 089° 34' E)

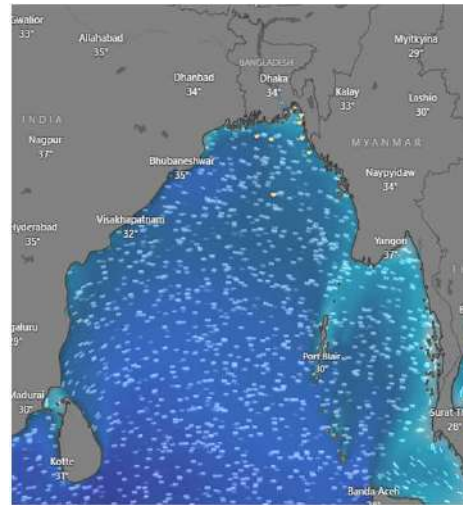


Date	Time	Air Temp (°C)		Sea Surface Temp (°C)	Baro Pressure (mbar)	Wind Direction	Wind Spd (kts)		Wave Ht (m)	Sea State	Humidity (%)	Prob of Rain (%)	Amount of Rain (mm)
		Max	Min				Gusting	Avg					
11-03-25 (Tuesday)	0001	31	20	24	1009	SSW	12	10	0.7	3	88	7	0.0
	0600			23	1013	W	15	9	0.8	3	90	9	0.0
	1200			27	1010	SW	8	6	0.7	3	52	3	0.0
	1800			25	1012	SSW	10	8	0.8	3	74	5	0.0
12-03-25 (Wednesday)	0001	31	20	24	1009	SW	13	10	0.9	3	83	5	0.0
	0600			23	1013	W	15	11	0.9	3	86	8	0.0
	1200			27	1010	SW	12	7	0.8	3	57	3	0.0
	1800			25	1012	SW	13	8	0.9	3	76	5	0.0
13-03-25 (Thursday)	0001	31	20	24	1009	SW	12	9	0.9	3	87	6	0.0
	0600			23	1013	SW	14	10	0.9	3	90	9	0.0
	1200			27	1010	S	10	7	0.8	3	54	2	0.0
	1800			25	1012	SW	12	9	0.9	3	75	6	0.0
14-03-25 (Friday)	0001	31	20	24	1009	SW	12	8	0.9	3	87	6	0.0
	0600			23	1013	SSW	14	11	0.9	3	90	8	0.0
	1200			27	1010	SSW	11	8	0.8	3	52	2	0.0
	1800			25	1012	SW	12	9	0.9	3	73	5	0.0

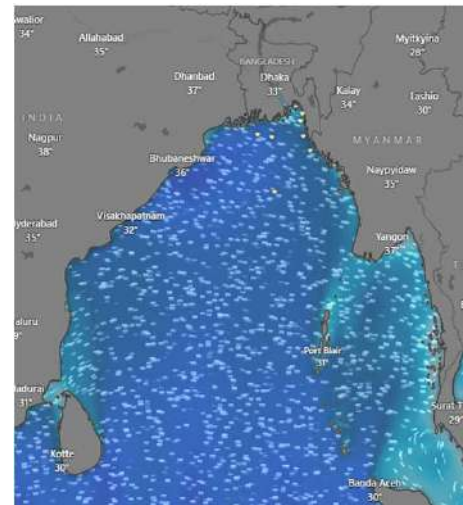
**11 Mar 2025**



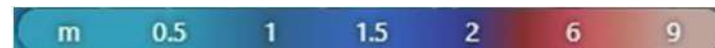
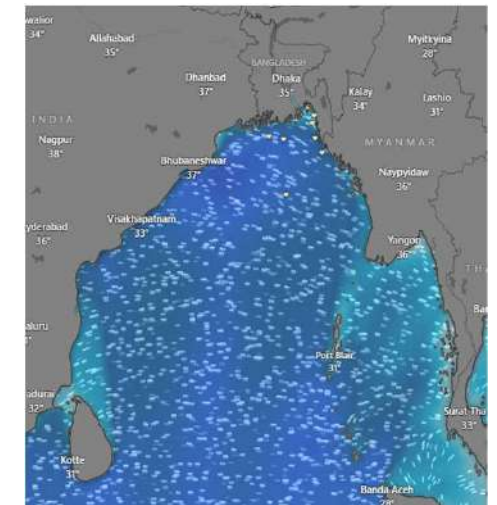
**12 Mar 2025**



**13 Mar 2025**



**14 Mar 2025**



Significant wave height (m)



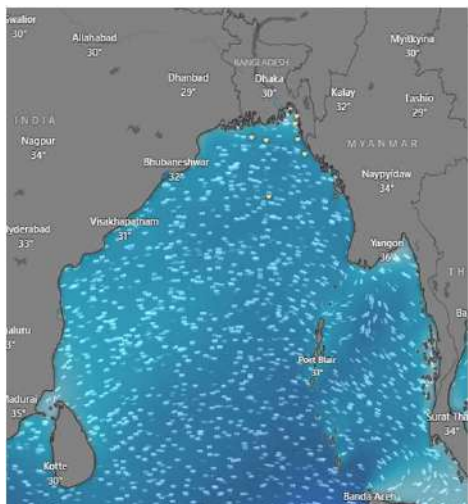
# MARINE WEATHER FORECAST (07 to 14 Mar 2025)

## OUTER EEZ (18° 48' N, 090° 30' E)

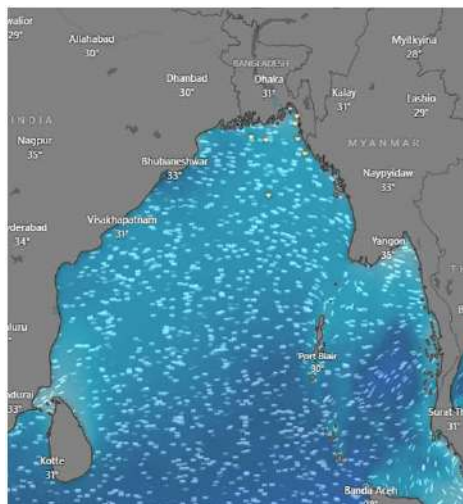


Date	Time	Air Temp (°C)		Sea Surface Temp (°C)	Baro Pressure (mbar)	Wind Direction	Wind Spd (kts)		Wave Ht (m)	Sea State	Humidity (%)	Prob of Rain (%)	Amount of Rain (mm)
		Max	Min				Gusting	Avg					
07-03-25 (Friday)	0001	31	21	24	1009	NW	10	8	0.8	3	87	8	0.0
	0600			23	1013	NNW	7	5	0.8	3	90	9	0.0
	1200			27	1010	NW	7	6	0.7	3	53	5	0.0
	1800			25	1012	NNW	9	4	0.7	3	64	7	0.0
08-03-25 (Saturday)	0001	31	21	24	1009	NW	8	5	0.6	3	88	6	0.0
	0600			23	1013	SSW	6	3	0.6	3	92	5	0.0
	1200			27	1010	SW	8	4	0.5	2	53	3	0.0
	1800			25	1012	SSW	5	3	0.5	2	65	6	0.0
09-03-25 (Sunday)	0001	31	21	24	1009	S	10	7	0.6	3	87	7	0.0
	0600			23	1013	NNE	7	3	0.6	3	91	9	0.0
	1200			27	1010	SSE	8	5	0.6	3	52	3	0.0
	1800			25	1012	NNE	9	5	0.6	3	66	5	0.0
10-03-25 (Monday)	0001	31	21	24	1009	S	12	8	0.6	3	87	7	0.0
	0600			23	1013	NE	9	5	0.6	3	91	9	0.0
	1200			27	1010	SSW	9	6	0.6	3	52	3	0.0
	1800			25	1012	NNW	7	4	0.6	3	66	5	0.0

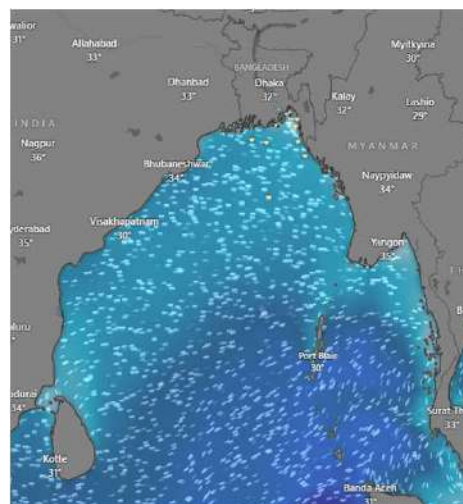
**07 Mar 2025**



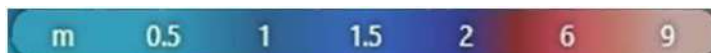
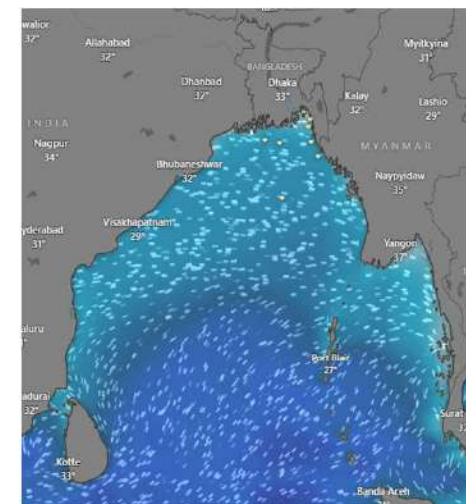
**08 Mar 2025**



**09 Mar 2025**



**10 Mar 2025**



Significant wave height (m)



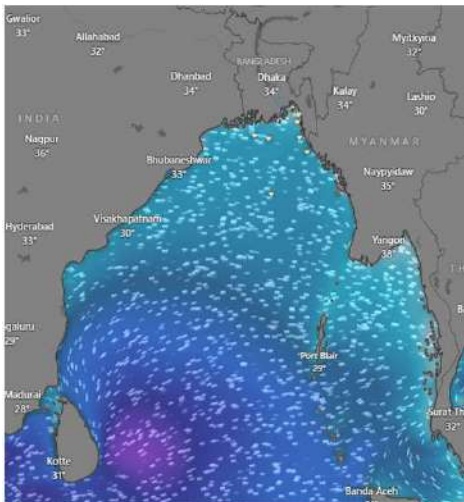
# MARINE WEATHER FORECAST (07 to 14 Mar 2025)

## OUTER EEZ (18° 48' N, 090° 30' E)

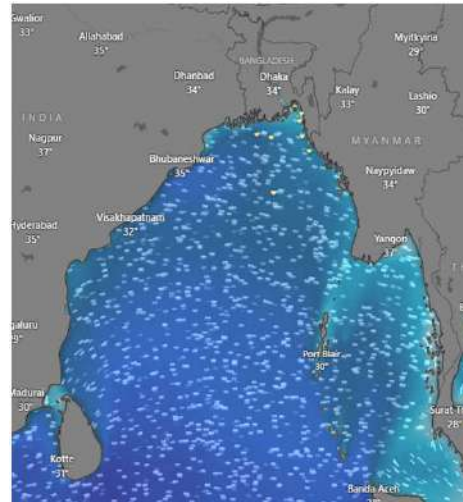


Date	Time	Air Temp (°C)		Sea Surface Temp (°C)	Baro Pressure (mbar)	Wind Direction	Wind Spd (kts)		Wave Ht (m)	Sea State	Humidity (%)	Prob of Rain (%)	Amount of Rain (mm)
		Max	Min				Gusting	Avg					
11-03-25 (Tuesday)	0001	31	21	25	1009	NNW	7	6	0.7	3	89	7	0.0
	0600			24	1013	NNW	12	8	0.7	3	90	8	0.0
	1200			27	1010	NW	10	5	0.7	3	54	3	0.0
	1800			26	1012	NNW	10	8	0.7	3	76	5	0.0
12-03-25 (Wednesday)	0001	31	21	25	1009	W	11	9	0.9	3	85	5	0.0
	0600			24	1013	W	12	7	0.9	3	86	7	0.0
	1200			27	1010	W	11	5	1.0	3	53	2	0.0
	1800			26	1012	SW	12	9	1.0	3	75	6	0.0
13-03-25 (Thursday)	0001	31	21	25	1009	SW	13	11	1.0	3	86	6	0.0
	0600			24	1013	SSW	16	12	1.1	3	88	8	0.0
	1200			27	1010	SW	15	11	1.1	3	52	3	0.0
	1800			26	1012	SSW	14	10	1.1	3	76	5	0.0
14-03-25 (Friday)	0001	31	21	25	1009	SSW	14	10	1.0	3	88	7	0.0
	0600			24	1013	SW	16	12	1.1	3	90	9	0.0
	1200			27	1010	SW	14	9	1.1	3	53	2	0.0
	1800			26	1012	SSW	16	11	1.0	3	75	6	0.0

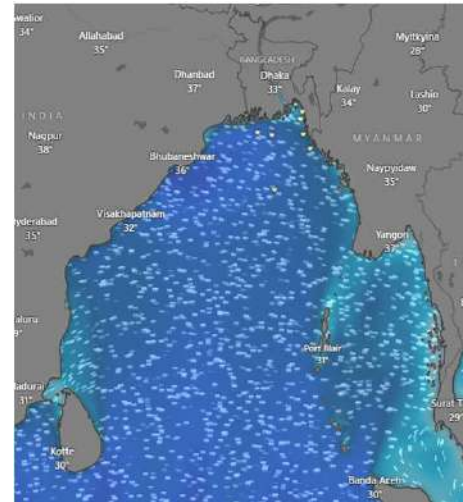
**11 Mar 2025**



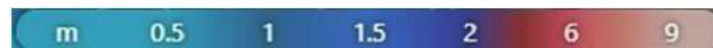
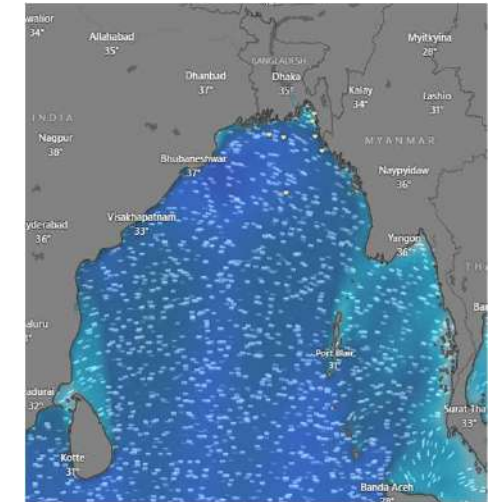
**12 Mar 2025**



**13 Mar 2025**



**14 Mar 2025**



Significant wave height (m)



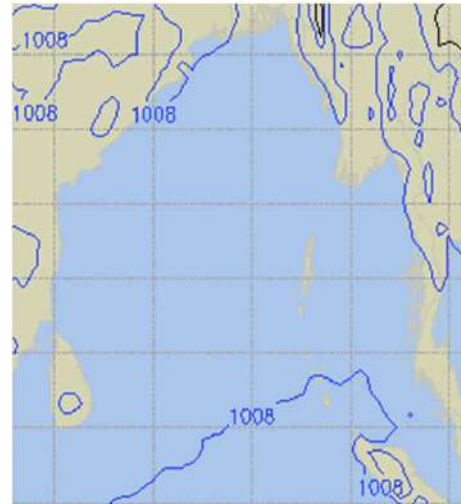
# PREDICTED SURFACE PRESSURE FORECAST (07 to 13 Mar 2025)



**07 Mar 2025**



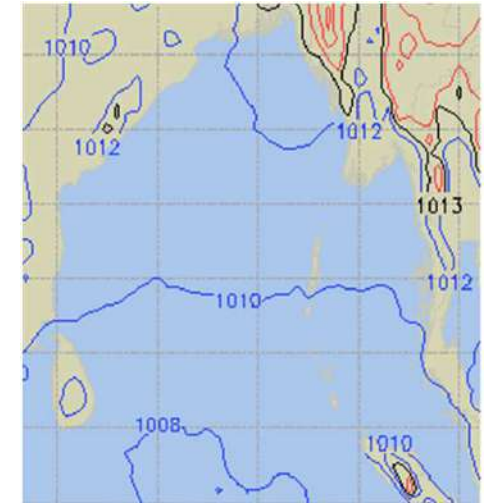
**08 Mar 2025**



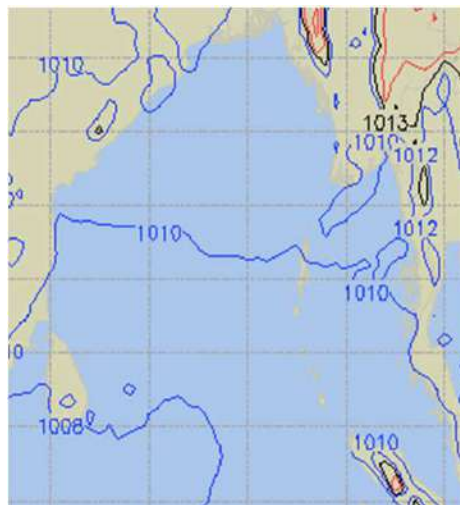
**09 Mar 2025**



**10 Mar 2025**



**11 Mar 2025**



**12 Mar 2025**



**13 Mar 2025**

