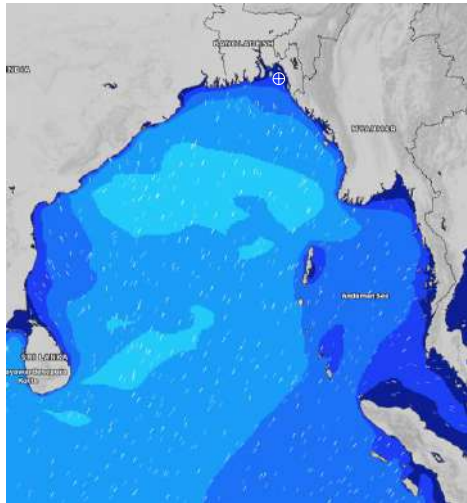


MARINE WEATHER FORECAST- NEAR AUTHORITY BUOY (Lat 22° 12' N, Long 091° 38' E)

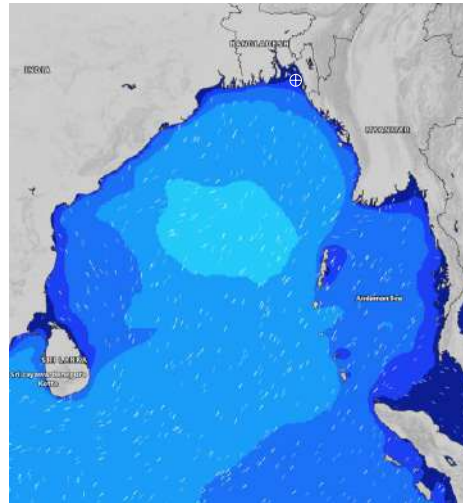
DATE : 06 to 13 July 2024

Date	Time	Max Wind Spd (kts)	Wind Direction	Wave Ht (m)	Sea State	Baro Pressure	Air Temp		Sea Surface Temp	Humidity (%)	Prb of Rain (%)	Sea State	Wave Ht (m)
							Max	Min					
06-07-24	0001	17	SSE	0.3	2	1003	30	26	28	92%	54% (0.3 mm)	0	0
	0600	17	SSE	0.3	2	1003			27	90%	12% (0.0 mm)	1	0 - 0.1
	1200	16	SSW	0.3	2	1003			28	82%	49% (0.4 mm)	2	0.1 - 0.5
	1800	14	S	0.3	2	1002			28	87%	36% (0.2 mm)	3	0.5 - 1.25
07-07-24	0001	13	SE	0.2	2	1003	30	26	28	90%	40% (0.4 mm)	4	1.25 - 2.5
	0600	11	SE	0.3	2	1003			27	93%	36% (0.2 mm)	5	2.5 - 4.0
	1200	9	SSW	0.2	2	1004			28	81%	55% (0.4 mm)	6	4.0 - 6.0
	1800	10	SSW	0.2	2	1003			29	88%	41% (0.3 mm)	7	6.0 - 9.0
08-07-24	0001	12	SE	0.2	2	1003	30	26	28	90%	55% (0.5 mm)	8	9.0 - 14.0
	0600	7	ESE	0.2	2	1003			26	93%	34% (0.7 mm)	9	Over 14.0
	1200	10	SW	0.1	1	1003			29	81%	36% (0.2 mm)		
	1800	14	S	0.2	2	1003			28	89%	62% (0.6 mm)		
09-07-24	0001	16	SSE	0.3	2	1004	30	26	28	90%	55% (0.4 mm)		
	0600	17	SE	0.3	2	1004			27	92%	34% (0.2 mm)		
	1200	18	SSW	0.3	2	1004			29	82%	33% (0.2 mm)		
	1800	18	S	0.4	2	1004			28	88%	24% (0.2 mm)		

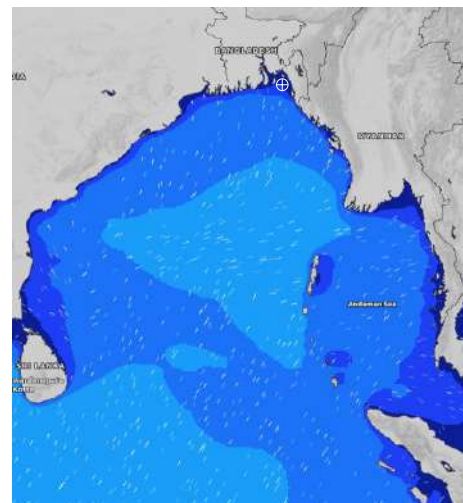
06 July 24 Sat (Probability 98%)



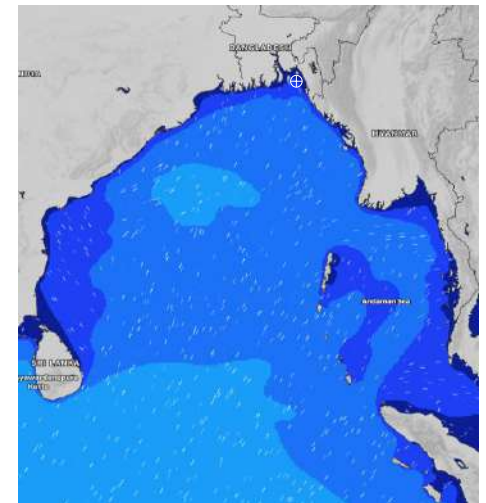
07 July 24 Sun (Probability 95%)



08 July 24 Mon (Probability 90%)



09 July 24 Tue (Probability 80%)



Significant wave height (m)

MARINE WEATHER FORECAST- NEAR AUTHORITY BUOY (Lat 22° 12' N, Long 091° 38' E)

DATE : 06 to 13 July 2024

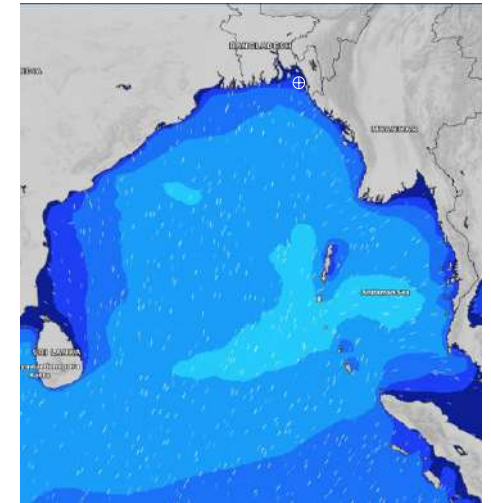
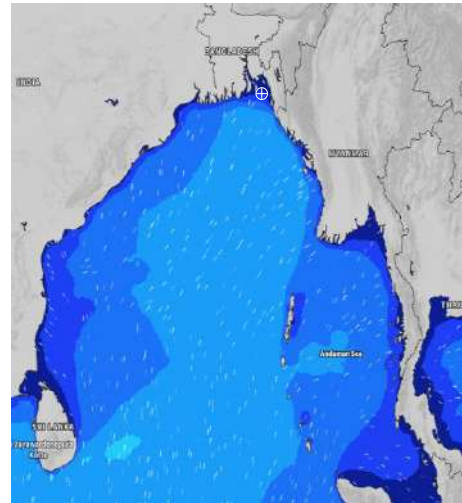
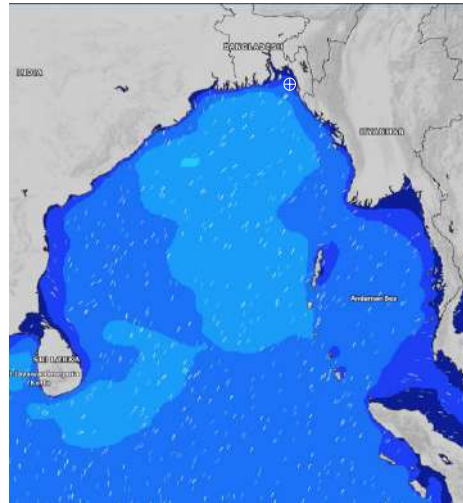
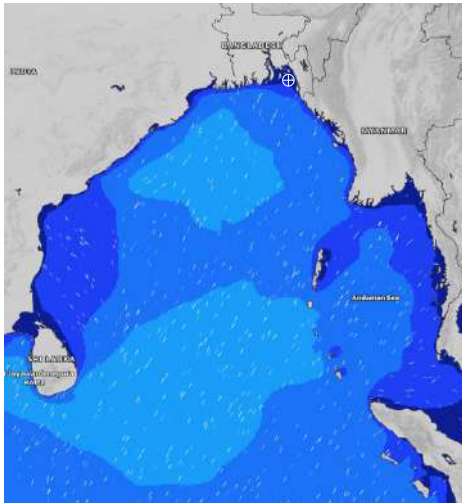
Date	Time	Max Wind Spd (kts)	Wind Direction	Wave Ht (m)	Sea State	Baro Pressure	Air Temp		Sea Surface Temp	Humidity (%)	Prob of Rain (%)	Sea State	Wave Ht (m)
							Max	Min					
10-07-24	0001	17	SSE	0.3	2	1006	29	26	27	90%	60% (0.5 mm)	0	0
	0600	17	SSE	0.3	2	1006			27	93%	70% (0.5 mm)	1	0 - 0.1
	1200	15	SSE	0.3	2	1006			28	88%	77% (0.6 mm)	2	0.1 - 0.5
	1800	17	SSE	0.4	2	1005			27	89%	55% (0.4 mm)	3	0.5 - 1.25
11-07-24	0001	17	SSE	0.3	2	1007	29	26	27	90%	62% (0.6 mm)	4	1.25 - 2.5
	0600	18	SSE	0.3	2	1005			27	94%	55% (0.4 mm)	5	2.5 - 4.0
	1200	20	SSE	0.4	2	1005			27	88%	34% (0.2 mm)	6	4.0 - 6.0
	1800	19	S	0.4	2	1003			28	89%	33% (0.2 mm)	7	6.0 - 9.0
12-07-24	0001	20	SSE	0.4	2	1003	29	26	26	90%	62% (0.6 mm)	8	9.0 - 14.0
	0600	20	SSE	0.4	2	1002			26	92%	55% (0.4 mm)	9	Over 14.0
	1200	19	S	0.4	2	1001			28	89%	34% (0.2 mm)		
	1800	19	S	0.4	2	1000			28	90%	33% (0.2 mm)		
13-07-24	0001	22	SSE	0.4	2	1001	30	26	27	90%	62% (0.6 mm)		
	0600	20	SSE	0.4	2	1000			27	92%	55% (0.4 mm)		
	1200	15	S	0.3	2	1000			28	89%	34% (0.2 mm)		
	1800	16	S	0.3	2	999			28	90%	33% (0.2 mm)		

10 July 24 Wed (Probability 70%)

11 July 24 Thu (Probability 60%)

12 July 24 Fri (Probability 50%)

13 July 24 Sat (Probability 50%)



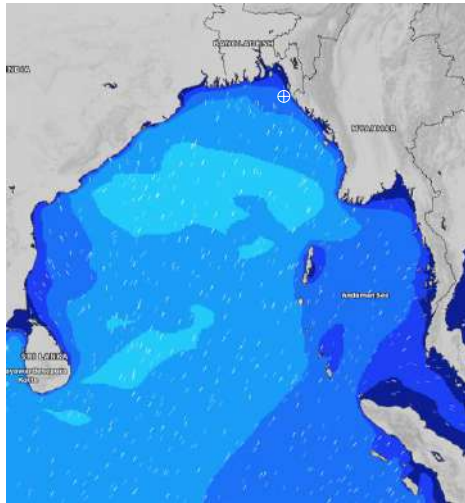
Significant wave height (m)

MARINE WEATHER FORECAST- 20 NM WEST OF ELEPHANT POINT (Lat 21° 10' N, Long 091° 42' E)

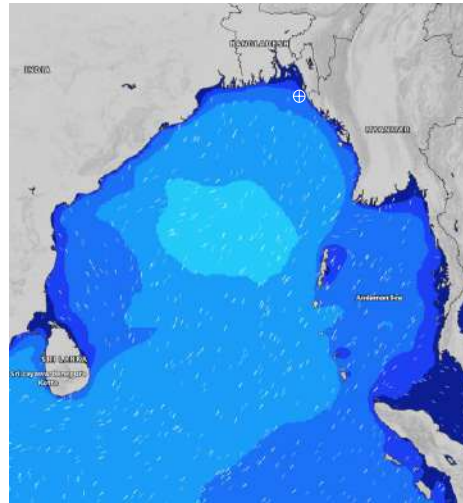
DATE : 06 to 13 July 2024

Date	Time	Max Wind Spd (kts)	Wind Direction	Wave Ht (m)	Sea State	Baro Pressure	Air Temp		Sea Surface Temp	Humidity (%)	Prob of Rain (%)	Sea State	Wave Ht (m)
							Max	Min					
06-07-24	0001	14	SSE	1.3	4	1004	30	26	28	92%	62% (0.6 mm)	0	0
	0600	14	SSE	1.4	4	1003			28	93%	52% (0.4 mm)	1	0 - 0.1
	1200	16	SSE	1.5	4	1004			29	84%	62% (0.5 mm)	2	0.1 - 0.5
	1800	11	S	1.4	4	1002			29	88%	35% (0.2 mm)	3	0.5 - 1.25
07-07-24	0001	10	S	1.4	4	1003	30	26	29	91%	45% (0.4 mm)	4	1.25 - 2.5
	0600	12	SSE	1.5	4	1003			28	93%	34% (0.2 mm)	5	2.5 - 4.0
	1200	15	SSE	1.4	4	1004			29	82%	54% (0.4 mm)	6	4.0 - 6.0
	1800	11	SSE	1.3	4	1003			29	87%	35% (0.2 mm)	7	6.0 - 9.0
08-07-24	0001	14	SSE	1.3	4	1003	30	26	29	91%	34% (0.7 mm)	8	9.0 - 14.0
	0600	17	SE	1.4	4	1003			28	93%	36% (0.2 mm)	9	Over 14.0
	1200	19	SSE	1.4	4	1003			29	82%	48% (0.2 mm)		
	1800	14	SSE	1.3	4	1002			29	88%	24% (0.2 mm)		
09-07-24	0001	17	SSE	1.3	4	1004	30	26	29	91%	52% (0.3 mm)		
	0600	17	SE	1.3	4	1004			28	93%	55% (0.5 mm)		
	1200	18	SSE	1.3	4	1005			29	82%	34% (0.2 mm)		
	1800	15	S	1.1	3	1004			28	89%	36% (0.2 mm)		

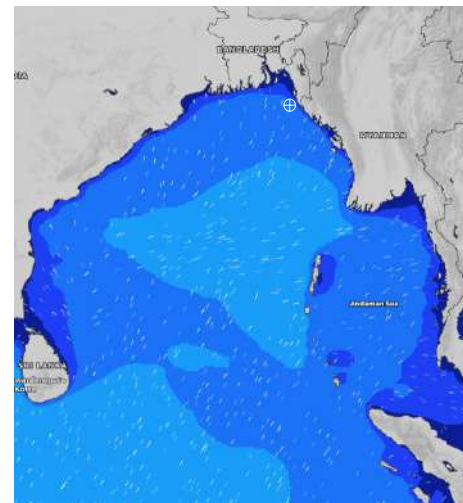
06 July 24 Sat (Probability 98%)



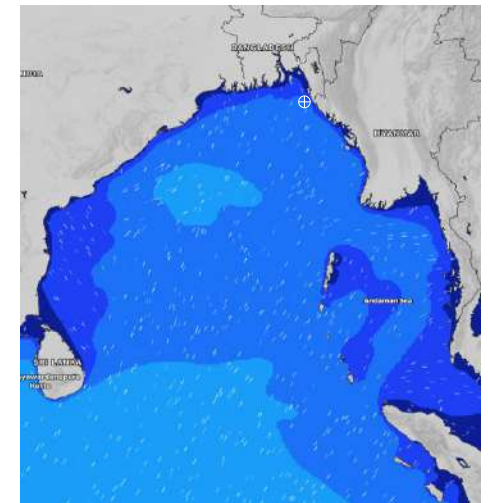
07 July 24 Sun (Probability 95%)



08 July 24 Mon (Probability 90%)



09 July 24 Tue (Probability 80%)



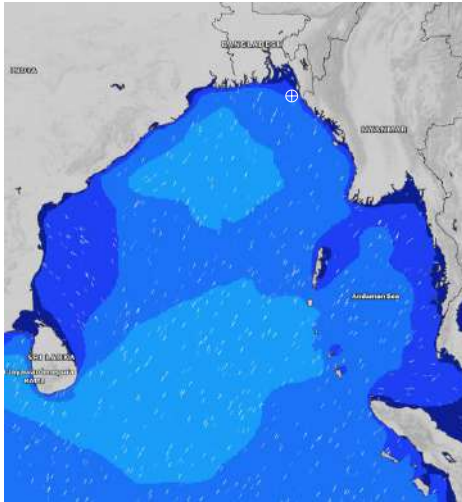
Significant wave height (m)

MARINE WEATHER FORECAST- 20 NM WEST OF ELEPHANT POINT (Lat 21° 10' N, Long 091° 42' E)

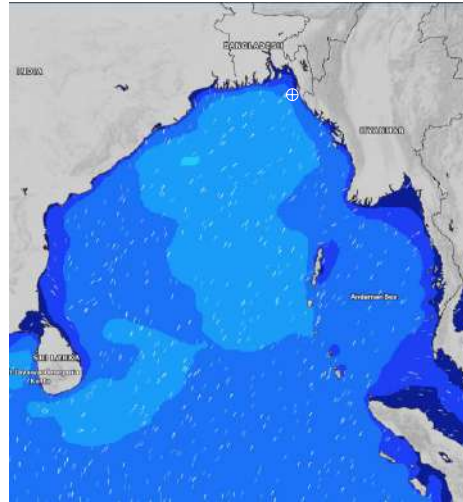
DATE : 06 to 13 July 2024

Date	Time	Max Wind Spd (kts)	Wind Direction	Wave Ht (m)	Sea State	Baro Pressure	Air Temp		Sea Surface Temp	Humidity (%)	Prob of Rain (%)	Sea State	Wave Ht (m)
							Max	Min					
10-07-24	0001	12	SSE	1.1	3	1006	29	26	28	92%	53% (0.5 mm)	0	0
	0600	11	SSE	1.1	3	1006			28	94%	32% (0.4 mm)	1	0 - 0.1
	1200	14	SSE	1.1	3	1007			28	89%	64% (0.2 mm)	2	0.1 - 0.5
	1800	13	SSE	1.2	3	1006			28	89%	55% (0.3 mm)	3	0.5 - 1.25
11-07-24	0001	14	SSE	1.2	3	1007	28	26	28	92%	63% (0.1 mm)	4	1.25 - 2.5
	0600	17	SSE	1.3	4	1006			27	93%	56% (0.2 mm)	5	2.5 - 4.0
	1200	18	SSE	1.4	4	1005			28	88%	52% (0.5 mm)	6	4.0 - 6.0
	1800	14	SSW	1.3	4	1003			28	89%	34% (0.2 mm)	7	6.0 - 9.0
12-07-24	0001	13	S	1.5	4	1003	28	26	28	91%	61% (0.3 mm)	8	9.0 - 14.0
	0600	13	S	1.5	4	1002			28	93%	52% (0.2 mm)	9	Over 14.0
	1200	13	SSE	1.5	4	1002			28	87%	53% (0.4 mm)		
	1800	17	SSE	1.5	4	1000			28	88%	35% (0.2 mm)		
13-07-24	0001	17	SSE	1.5	4	1001	29	26	28	91%	63% (0.3 mm)		
	0600	15	SE	1.4	4	1000			27	93%	55% (0.5 mm)		
	1200	15	S	1.4	4	1001			28	87%	54% (0.4 mm)		
	1800	13	SSE	1.3	4	1000			29	89%	33% (0.2 mm)		

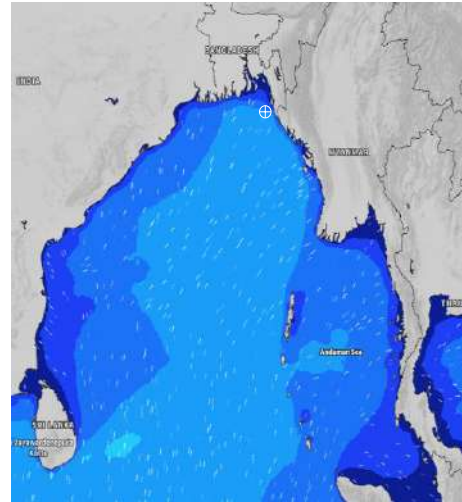
10 July 24 Wed (Probability 70%)



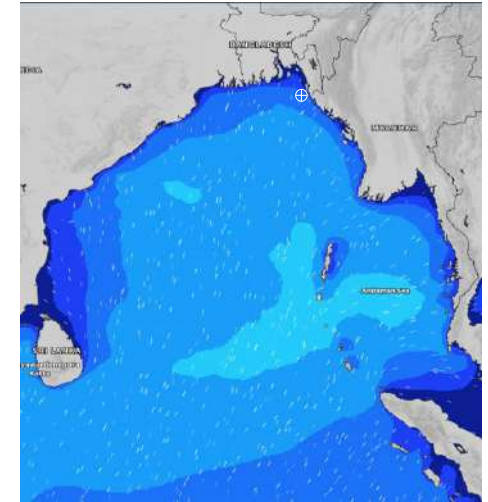
11 July 24 Thu (Probability 60%)



12 July 24 Fri (Probability 50%)



13 July 24 Sat (Probability 50%)



Significant wave height (m)

MARINE WEATHER FORECAST- 15 NM WEST OF ST. MARTIN'S LIGHT HOUSE (Lat 20° 37'N, Long 092° 03'E)

DATE : 06 to 13 July 2024

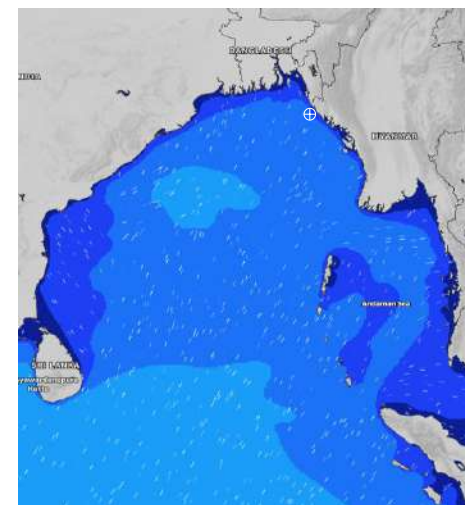
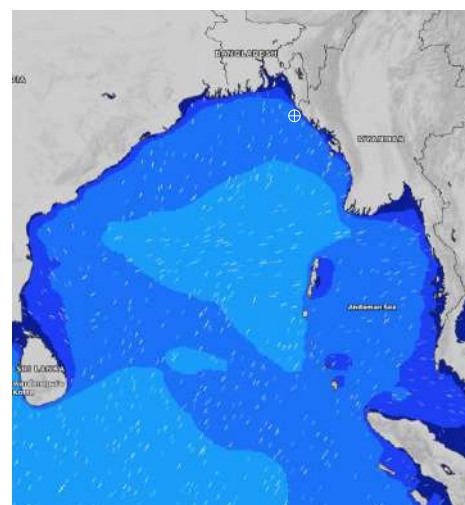
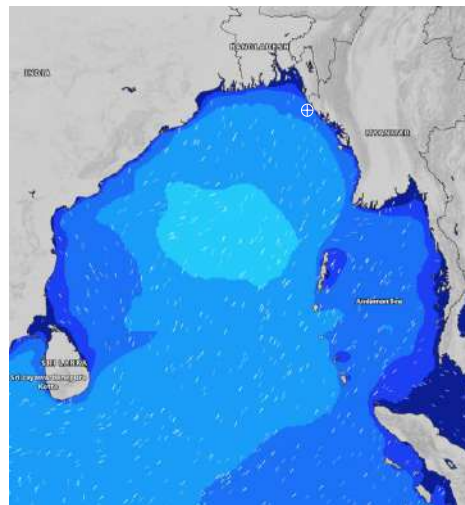
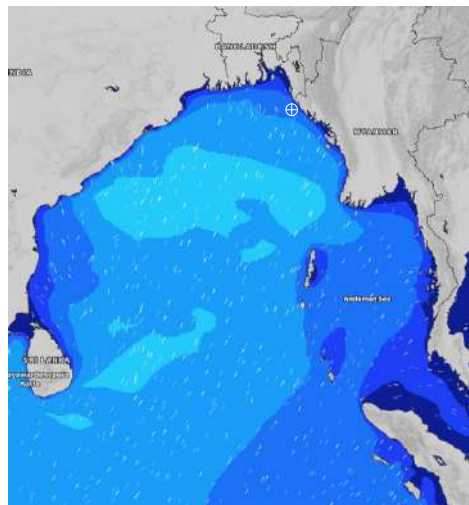
Date	Time	Max Wind Spd (kts)	Wind Direction	Wave Ht (m)	Sea State	Baro Pressure	Air Temp		Sea Surface Temp	Humidity (%)	Prob of Rain(%)	Sea State	Wave Ht (m)
							Max	Min					
06-07-24	0001	9	SSE	1.5	4	1004	29	26	28	92%	77% (0.8 mm)	0	0
	0600	10	SE	1.7	4	1003			28	92%	75% (0.7 mm)	1	0 - 0.1
	1200	12	SSE	1.8	4	1004			29	87%	97% (1.2 mm)	2	0.1 - 0.5
	1800	8	SSW	1.7	4	1002			29	89%	40% (0.2 mm)	3	0.5 - 1.25
07-07-24	0001	8	SSW	1.8	4	1004	30	26	29	91%	56% (0.4 mm)	4	1.25 - 2.5
	0600	9	SSE	1.9	4	1003			28	94%	34% (0.2 mm)	5	2.5 - 4.0
	1200	13	SSE	1.8	4	1004			29	85%	54% (0.4 mm)	6	4.0 - 6.0
	1800	10	SSE	1.7	4	1002			29	88%	32% (0.2 mm)	7	6.0 - 9.0
08-07-24	0001	14	SSE	1.7	4	1004	30	26	29	91%	42% (0.4 mm)	8	9.0 - 14.0
	0600	15	SE	1.7	4	1003			29	94%	24% (0.1 mm)	9	Over 14.0
	1200	17	SE	1.7	4	1004			29	86%	45% (0.4 mm)		
	1800	13	S	1.6	4	1002			29	88%	42% (0.2 mm)		
09-07-24	0001	15	SSE	1.5	4	1005	29	26	29	91%	62% (0.6 mm)		
	0600	11	SSE	1.5	4	1004			28	94%	55% (0.4 mm)		
	1200	14	S	1.4	4	1006			29	85%	34% (0.2 mm)		
	1800	12	S	1.4	4	1004			28	89%	33% (0.2 mm)		

06 July 24 Sat (Probability 98%)

07 July 24 Sun (Probability 95%)

08 July 24 Mon (Probability 90%)

09 July 24 Tue (Probability 80%)



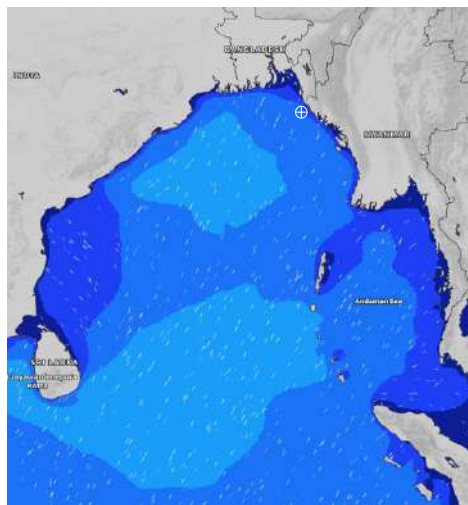
Significant wave height (m)

MARINE WEATHER FORECAST- 15 NM WEST OF ST. MARTIN'S LIGHT HOUSE (Lat 20° 37'N, Long 092° 03'E)

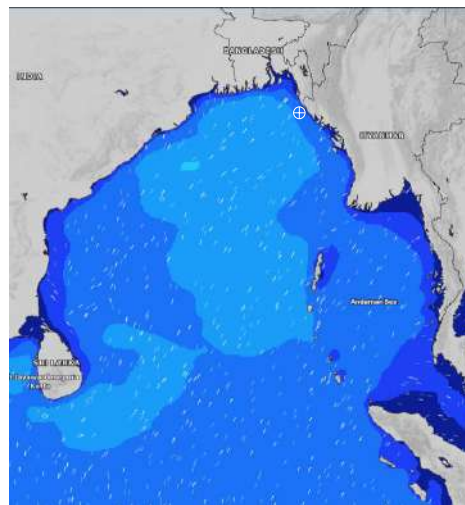
DATE : 06 to 13 July 2024

Date	Time	Max Wind Spd (kts)	Wind Direction	Wave Ht (m)	Sea State	Baro Pressure	Air Temp		Sea Surface Temp	Humidity (%)	Prob of Rain (%)	Sea State	Wave Ht (m)
							Max	Min					
10-07-24	0001	12	S	1.3	4	1006	29	26	29	92%	62% (0.6 mm)	0	0
	0600	9	SSW	1.3	4	1006			28	94%	55% (0.4 mm)	1	0 - 0.1
	1200	11	S	1.4	4	1007			28	87%	34% (0.2 mm)	2	0.1 - 0.5
	1800	12	S	1.4	4	1005			27	88%	33% (0.2 mm)	3	0.5 - 1.25
11-07-24	0001	10	SSE	1.3	4	1007	28	26	28	90%	62% (0.6 mm)	4	1.25 - 2.5
	0600	9	SSE	1.4	4	1005			27	93%	55% (0.4 mm)	5	2.5 - 4.0
	1200	11	SSE	1.4	4	1006			28	87%	34% (0.2 mm)	6	4.0 - 6.0
	1800	15	SSW	1.6	4	1003			27	89%	33% (0.2 mm)	7	6.0 - 9.0
12-07-24	0001	15	SSW	1.8	4	1005	28	26	28	92%	62% (0.4 mm)	8	9.0 - 14.0
	0600	16	SSW	1.9	4	1002			28	94%	60% (0.4 mm)	9	Over 14.0
	1200	12	SSW	1.9	4	1003			28	87%	46% (0.2 mm)		
	1800	12	S	1.9	4	1002			28	88%	35% (0.2 mm)		
13-07-24	0001	12	SSE	1.7	4	1002	29	26	28	90%	64% (0.6 mm)		
	0600	11	S	1.6	4	1000			28	93%	75% (0.7 mm)		
	1200	8	S	1.6	4	1002			28	87%	43% (0.1 mm)		
	1800	11	S	1.6	4	1000			28	89%	34% (0.2 mm)		

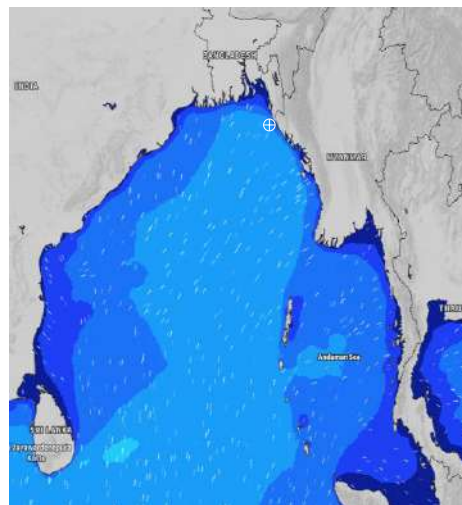
10 July 24 Wed (Probability 70%)



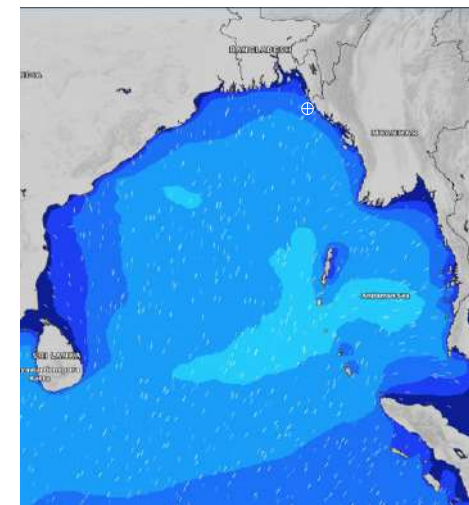
11 July 24 Thu (Probability 60%)



12 July 24 Fri (Probability 50%)



13 July 24 Sat (Probability 50%)



Significant wave height (m)

MARINE WEATHER FORECAST- 40 NM ESE OF PAYRA FAIRWAY (Lat 21° 07' N, Long 090° 45' E)

DATE : 06 to 13 July 2024

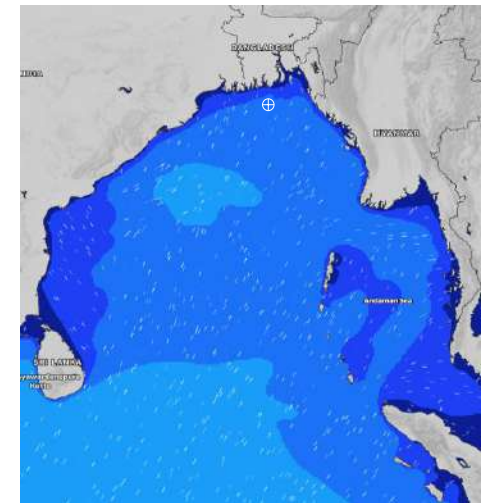
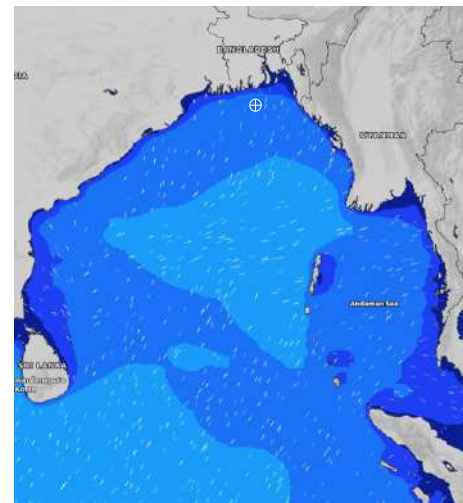
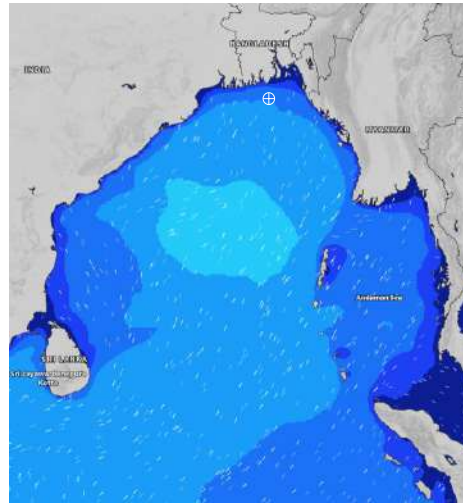
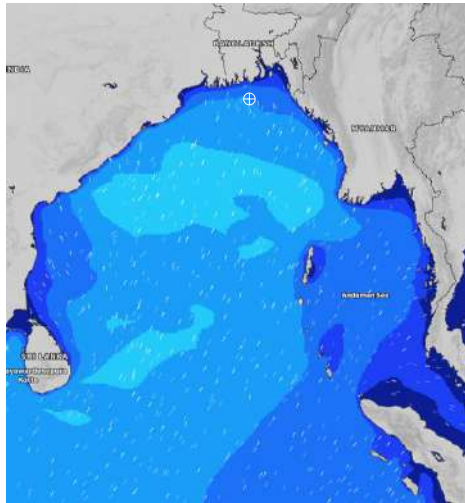
Date	Time	Max Wind Spd (kts)	Wind Direction	Wave Ht (m)	Sea State	Baro Pressure	Air Temp		Sea Surface Temp	Humidity (%)	Prob of Rain (%)	Sea State	Wave Ht (m)
							Max	Min					
06-07-24	0001	15	S	1.7	4	1003	30	28	29	90%	20% (0.0 mm)	0	0
	0600	12	S	1.8	4	1002			29	89%	14% (0.0 mm)	1	0 - 0.1
	1200	13	S	1.8	4	1003			29	86%	12% (0.0 mm)	2	0.1 - 0.5
	1800	13	SSW	1.8	4	1001			29	87%	16% (0.0 mm)	3	0.5 - 1.25
07-07-24	0001	11	S	1.9	4	1003	30	28	29	88%	24% (0.1 mm)	4	1.25 - 2.5
	0600	10	S	1.9	4	1002			29	91%	51% (0.4 mm)	5	2.5 - 4.0
	1200	13	SSE	1.8	4	1003			29	84%	34% (0.2 mm)	6	4.0 - 6.0
	1800	12	SSE	1.7	4	1002			29	86%	20% (0.0 mm)	7	6.0 - 9.0
08-07-24	0001	15	SE	1.8	4	1003	30	28	29	88%	24% (0.1 mm)	8	9.0 - 14.0
	0600	14	SE	1.7	4	1002			29	90%	45% (0.4 mm)	9	Over 14.0
	1200	15	SSE	1.7	4	1003			29	83%	24% (0.1 mm)		
	1800	12	SSE	1.6	4	1002			29	85%	12% (0.0 mm)		
09-07-24	0001	15	SSE	1.5	4	1004	30	28	29	87%	50% (0.4 mm)		
	0600	10	S	1.4	4	1004			29	90%	45% (0.4 mm)		
	1200	11	S	1.3	4	1004			29	85%	40% (0.3 mm)		
	1800	14	SSW	1.3	4	1004			29	87%	30% (0.2 mm)		

06 July 24 Sat (Probability 98%)

07 July 24 Sun (Probability 95%)

08 July 24 Mon (Probability 90%)

09 July 24 Tue (Probability 80%)



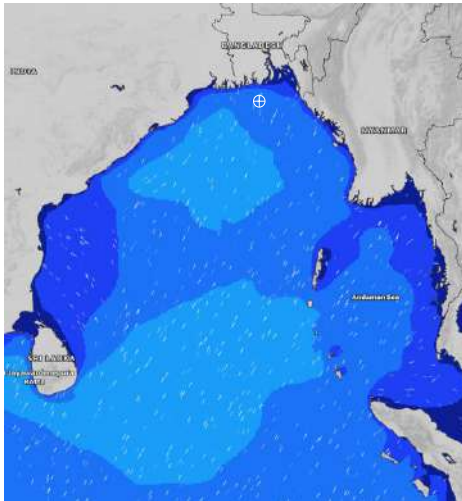
Significant wave height (m)

MARINE WEATHER FORECAST- 40 NM ESE OF PAYRA FAIRWAY (Lat 21° 07' N, Long 090° 45' E)

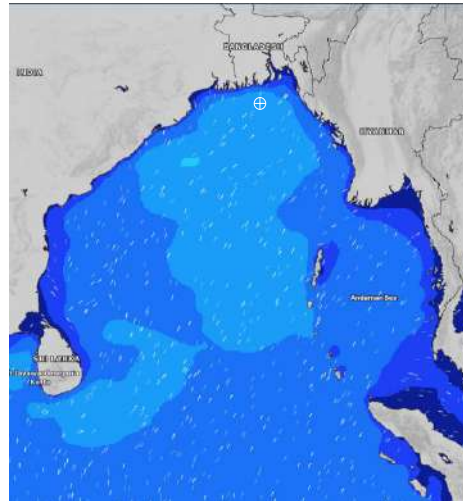
DATE : 06 to 13 July 2024

Date	Time	Max Wind Spd (kts)	Wind Direction	Wave Ht (m)	Sea State	Baro Pressure	Air Temp		Sea Surface Temp	Humidity (%)	Prob of Rain (%)	Sea State	Wave Ht (m)
							Max	Min					
10-07-24	0001	13	S	1.4	4	1005	30	28	29	88%	62% (0.2 mm)	0	0
	0600	12	SSW	1.4	4	1005			29	91%	55% (0.1 mm)	1	0 - 0.1
	1200	13	SSW	1.5	4	1006			29	84%	77% (1.2 mm)	2	0.1 - 0.5
	1800	17	SSW	1.6	4	1005			28	86%	69% (1.0 mm)	3	0.5 - 1.25
11-07-24	0001	14	S	1.5	4	1006	30	27	28	88%	62% (0.3 mm)	4	1.25 - 2.5
	0600	18	S	1.6	4	1004			28	90%	56% (0.2 mm)	5	2.5 - 4.0
	1200	16	SSW	1.6	4	1005			28	83%	62% (0.2 mm)	6	4.0 - 6.0
	1800	18	SSW	1.9	4	1003			29	85%	22% (0.1 mm)	7	6.0 - 9.0
12-07-24	0001	18	SSW	1.9	4	1002	30	27	29	87%	63% (0.2 mm)	8	9.0 - 14.0
	0600	18	SSW	2.0	4	1001			28	90%	42% (0.3 mm)	9	Over 14.0
	1200	15	SSW	1.9	4	1001			29	85%	41% (0.4 mm)		
	1800	13	SSW	1.9	4	999			29	87%	22% (0.1 mm)		
13-07-24	0001	16	SSW	1.7	4	1000	30	28	29	90%	61% (0.6 mm)		
	0600	13	SSW	1.7	4	1000			29	91%	44% (0.4 mm)		
	1200	13	S	1.7	4	1000			29	87%	43% (0.4 mm)		
	1800	12	S	1.7	4	999			29	88%	24% (0.1 mm)		

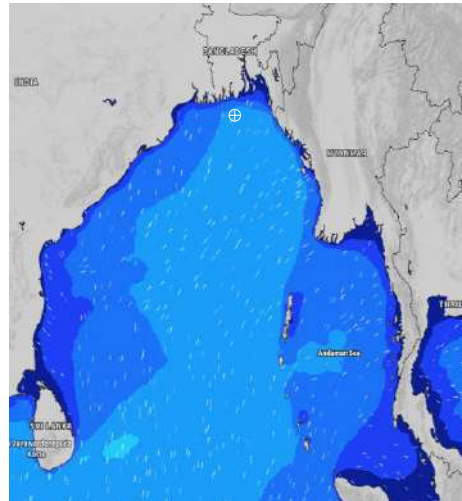
10 July 24 Wed (Probability 70%)



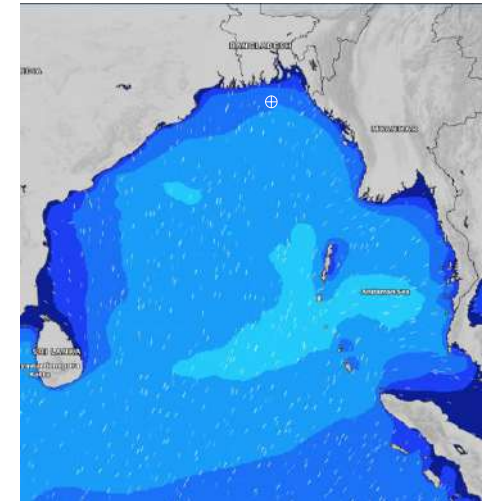
11 July 24 Thu (Probability 60%)



12 July 24 Fri (Probability 50%)



13 July 24 Sat (Probability 50%)



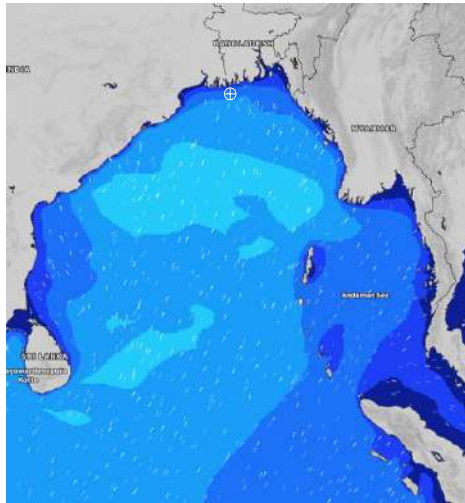
Significant wave height (m)

MARINE WEATHER FORECAST- 10 NM SOUTH OF MONGLA FAIRWAY (Lat 21° 16' N, Long 089° 34' E)

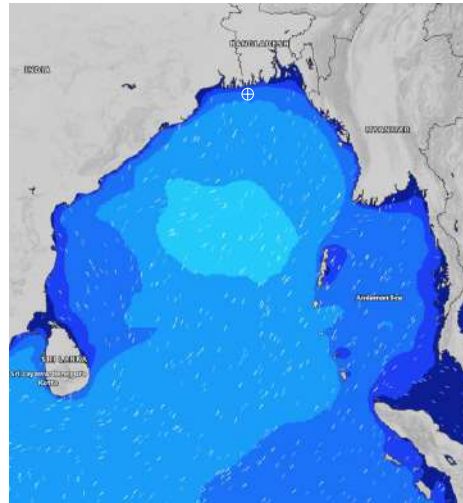
DATE : 06 to 13 July 2024

Date	Time	Max Wind Spd (kts)	Wind Direction	Wave Ht (m)	Sea State	Baro Pressure	Air Temp		Sea Surface Temp	Humidity (%)	Prob of Rain (%)	Sea State	Wave Ht (m)
							Max	Min					
06-07-24	0001	17	SSW	1.7	4	1002	31	27	29	91%	20% (0.0 mm)	0	0
	0600	15	SSW	1.8	4	1001			29	90%	15% (0.0 mm)	1	0 - 0.1
	1200	16	SSW	1.7	4	1002			29	81%	34% (0.2 mm)	2	0.1 - 0.5
	1800	12	S	1.8	4	1000			29	87%	24% (0.1 mm)	3	0.5 - 1.25
07-07-24	0001	13	S	1.9	4	1002	32	27	29	92%	21% (0.0 mm)	4	1.25 - 2.5
	0600	11	S	1.9	4	1002			29	94%	56% (0.4 mm)	5	2.5 - 4.0
	1200	12	SE	1.7	4	1003			29	83%	58% (0.5 mm)	6	4.0 - 6.0
	1800	12	SSE	1.8	4	1002			29	84%	24% (0.1 mm)	7	6.0 - 9.0
08-07-24	0001	13	SSE	1.7	4	1002	32	28	29	91%	20% (0.0 mm)	8	9.0 - 14.0
	0600	13	SE	1.6	4	1002			29	92%	34% (0.2 mm)	9	Over 14.0
	1200	12	SSE	1.5	4	1003			29	78%	42% (0.3 mm)		
	1800	10	SE	1.4	4	1001			29	83%	10% (0.0 mm)		
09-07-24	0001	13	S	1.4	4	1003	31	27	29	90%	21% (0.0 mm)		
	0600	9	S	1.3	4	1003			29	94%	47% (0.4 mm)		
	1200	12	S	1.2	3	1004			29	81%	66% (0.6 mm)		
	1800	14	S	1.3	4	1003			29	86%	16% (0.0 mm)		

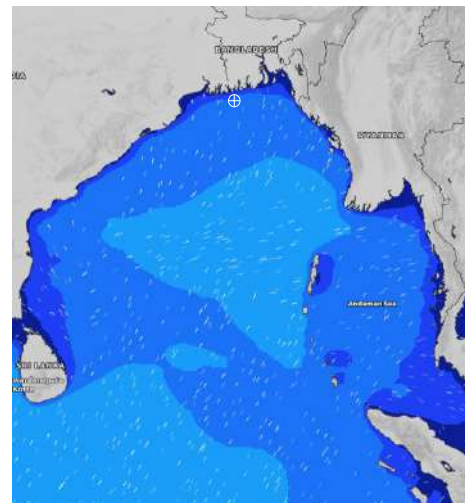
06 July 24 Sat (Probability 98%)



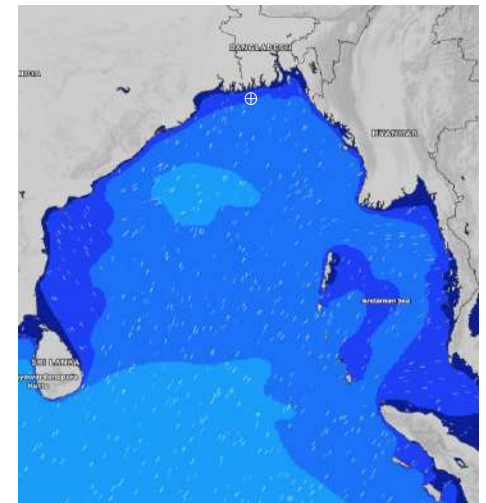
07 July 24 Sun (Probability 95%)



08 July 24 Mon (Probability 90%)



09 July 24 Tue (Probability 80%)



Significant wave height (m)

MARINE WEATHER FORECAST- 10 NM SOUTH OF MONGLA FAIRWAY (Lat 21° 16' N, Long 089° 34' E)

DATE : 06 to 13 July 2024

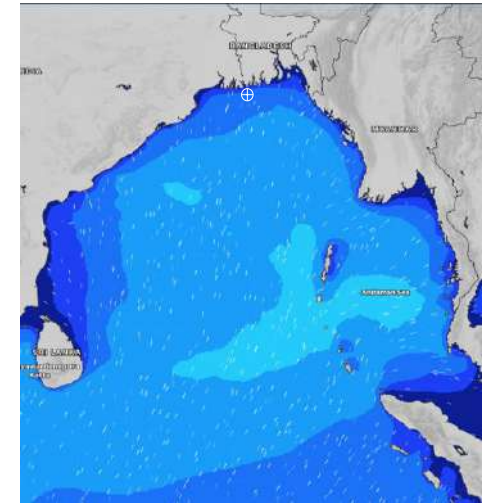
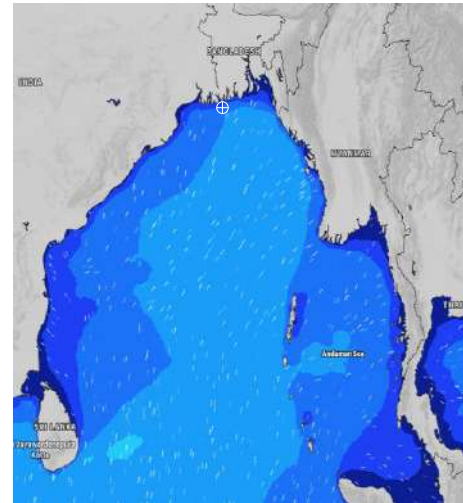
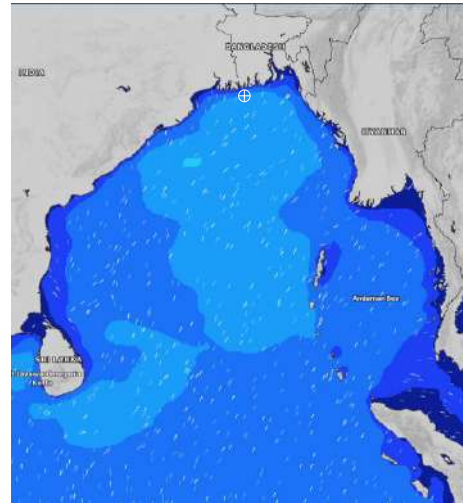
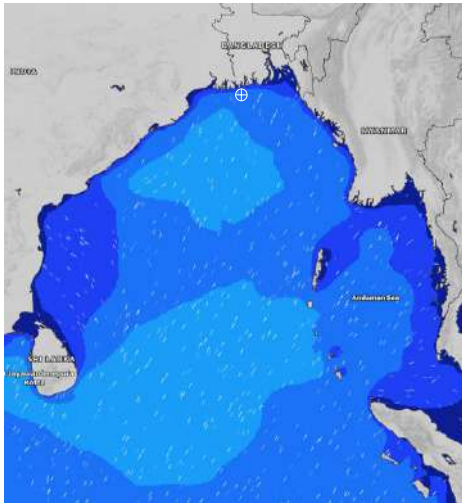
Date	Time	Max Wind Spd (kts)	Wind Direction	Wave Ht (m)	Sea State	Baro Pressure	Air Temp		Sea Surface Temp	Humidity (%)	Prob of Rain (%)	Sea State	Wave Ht (m)
							Max	Min					
10-07-24	0001	15	SSW	1.4	4	1005	31	28	29	91%	45% (0.5 mm)	0	0
	0600	16	SSW	1.5	4	1005			29	94%	32% (0.7 mm)	1	0 - 0.1
	1200	16	SSW	1.7	4	1004			29	83%	30% (0.2 mm)	2	0.1 - 0.5
	1800	19	SSW	1.7	4	1004			28	85%	62% (0.6 mm)	3	0.5 - 1.25
11-07-24	0001	20	SSW	1.8	4	1005	31	27	29	91%	55% (0.4 mm)	4	1.25 - 2.5
	0600	19	S	2.0	4	1003			29	93%	34% (0.2 mm)	5	2.5 - 4.0
	1200	19	SSW	2.0	4	1003			29	84%	63% (0.6 mm)	6	4.0 - 6.0
	1800	17	SSW	2.0	4	1001			29	85%	62% (0.4 mm)	7	6.0 - 9.0
12-07-24	0001	18	SSW	1.8	4	1002	31	27	29	91%	61% (0.7 mm)	8	9.0 - 14.0
	0600	17	SSW	1.8	4	1000			29	94%	40% (0.4 mm)	9	Over 14.0
	1200	13	SSW	1.8	4	1000			29	85%	62% (0.5 mm)		
	1800	13	SSW	1.7	4	998			29	87%	61% (0.6 mm)		
13-07-24	0001	19	SSW	1.7	4	999	31	27	29	91%	61% (0.7 mm)		
	0600	15	SW	1.7	4	998			29	93%	40% (0.4 mm)		
	1200	12	SSW	1.6	4	999			29	84%	62% (0.5 mm)		
	1800	12	S	1.5	4	998			29	85%	61% (0.6 mm)		

10 July 24 Wed (Probability 70%)

11 July 24 Thu (Probability 60%)

12 July 24 Fri (Probability 50%)

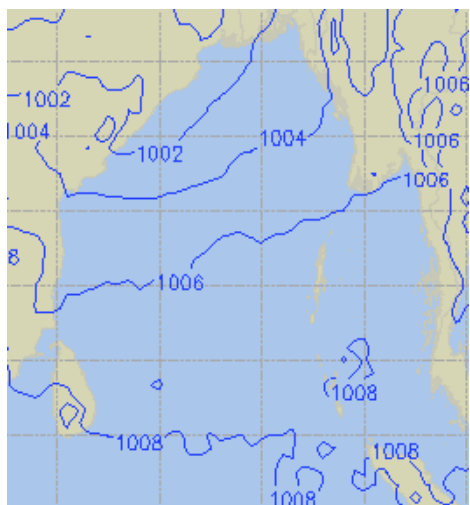
13 July 24 Sat (Probability 50%)



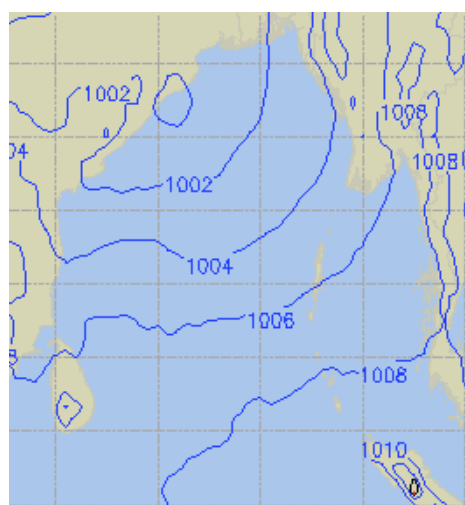
Significant wave height (m)

PREDICTED SURFACE PRESSURE FORECAST (06 to 12 July 2024)

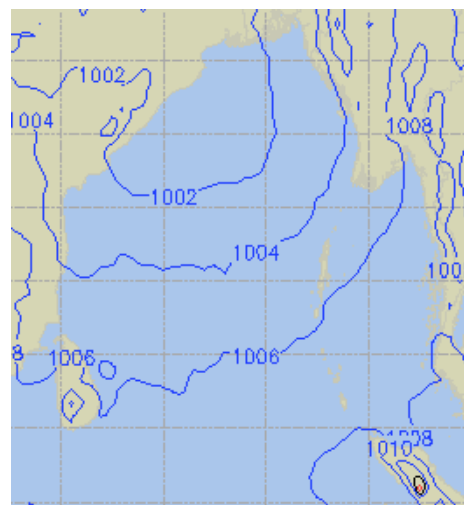
06 July 24 Sat (Probability 98%)



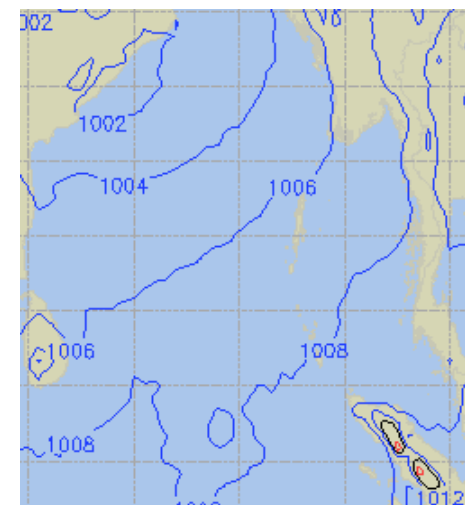
07 July 24 Sun (Probability 95%)



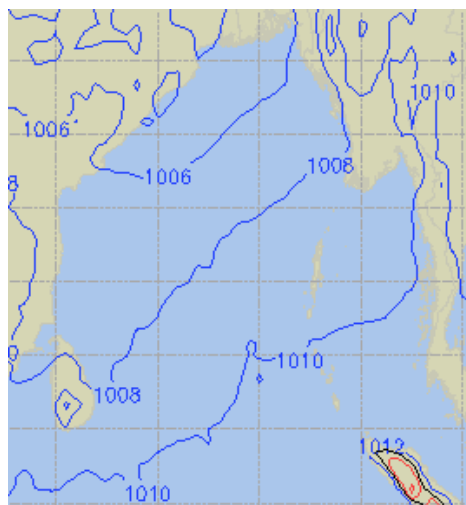
08 July 24 Mon (Probability 90%)



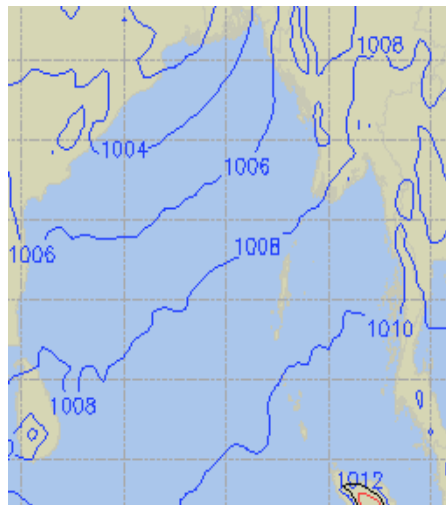
09 July 24 Tue (Probability 80%)



10 July 24 Wed (Probability 70%)



11 July 24 Thu (Probability 60%)



12 July 24 Fri (Probability 50%)

