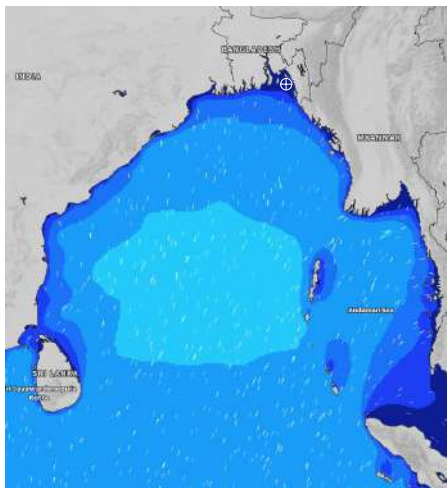


# MARINE WEATHER FORECAST- NEAR AUTHORITY BUOY (Lat 22° 12'N, Long 091° 38'E)

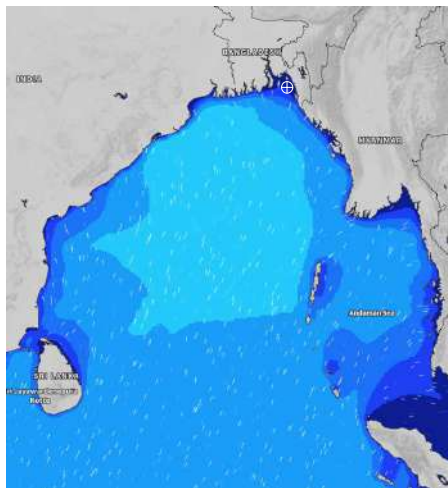
**DATE : 06 to 13 June 2024**

Date	Time	Max Wind Spd (kts)	Wind Direction	Wave Ht (m)	Sea State	Baro Pressure	Air Temp		Sea Surface Temp	Humidity (%)	Prb of Rain (%)	Sea State	Wave Ht (m)
							Max	Min					
06-06-24	0001	12	SSE	0.2	2	1006	33	27	29	91%	56% (0.6 mm)	0	0
	0600	8	SE	0.2	2	1007			28	96%	51% (2.1 mm)	1	0 - 0.1
	1200	7	SW	0.2	2	1006			29	84%	21% (0.0 mm)	2	0.1 - 0.5
	1800	13	SW	0.3	2	1004			29	89%	23% (0.0 mm)	3	0.5 - 1.25
07-06-24	0001	16	S	0.3	2	1005	33	27	29	90%	45% (0.5 mm)	4	1.25 - 2.5
	0600	13	SSE	0.2	2	1005			28	95%	36% (0.4 mm)	5	2.5 - 4.0
	1200	17	S	0.3	2	1006			29	83%	22% (0.0 mm)	6	4.0 - 6.0
	1800	21	S	0.4	2	1003			29	87%	18% (0.0 mm)	7	6.0 - 9.0
08-06-24	0001	20	SSE	0.4	2	1005	33	27	29	92%	38% (0.4 mm)	8	9.0 - 14.0
	0600	19	SE	0.4	2	1004			28	95%	26% (0.1 mm)	9	Over 14.0
	1200	20	S	0.4	2	1006			29	81%	15% (0.0 mm)		
	1800	19	SSE	0.4	2	1002			29	88%	28% (0.1 mm)		
09-06-24	0001	19	SSE	0.4	2	1003	33	27	29	93%	39% (0.4 mm)		
	0600	21	SSE	0.4	2	1002			28	96%	25% (0.1 mm)		
	1200	20	SE	0.4	2	1003			29	82%	17% (0.0 mm)		
	1800	18	SSE	0.4	2	1001			29	87%	25% (0.1 mm)		

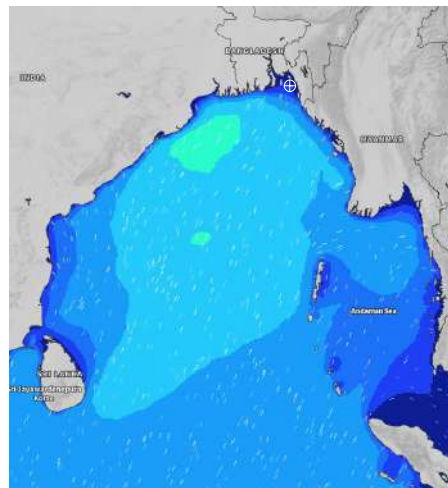
**06 June 24 Thu (Probability 98%)**



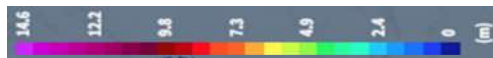
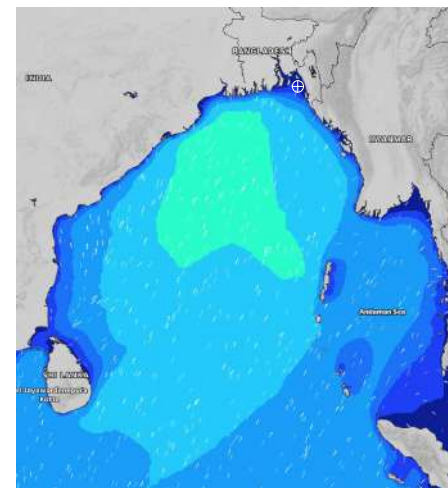
**07 June 24 Fri (Probability 95%)**



**08 June 24 Sat (Probability 90%)**



**09 June 24 Sun (Probability 80%)**



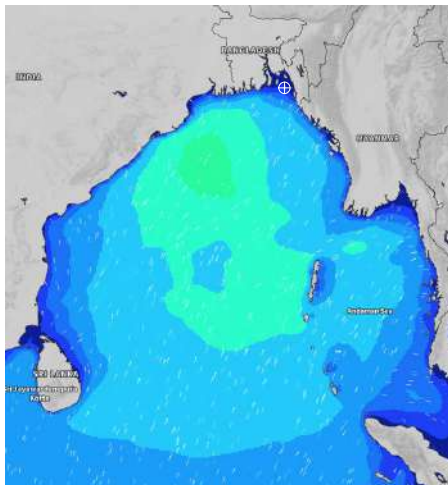
Significant wave height (m)

# MARINE WEATHER FORECAST- NEAR AUTHORITY BUOY (Lat 22° 12'N, Long 091° 38'E)

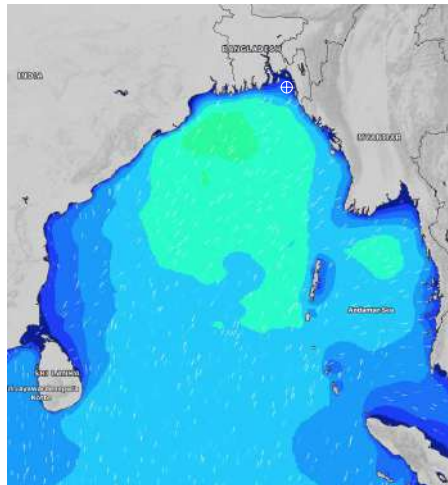
**DATE : 06 to 13 June 2024**

Date	Time	Max Wind Spd (kts)	Wind Direction	Wave Ht (m)	Sea State	Baro Pressure	Air Temp		Sea Surface Temp	Humidity (%)	Prob of Rain (%)	Sea State	Wave Ht (m)
							Max	Min					
10-06-24	0001	19	SE	0.3	2	1003	32	26	29	92%	46% (0.5 mm)	0	0
	0600	20	SE	0.3	2	1002			28	94%	41% (0.4 mm)	1	0 - 0.1
	1200	21	SSW	0.4	2	1004			29	83%	24% (0.1 mm)	2	0.1 - 0.5
	1800	19	S	0.3	2	1001			29	87%	25% (0.1 mm)	3	0.5 - 1.25
11-06-24	0001	23	SE	0.4	2	1003	32	26	29	88%	33% (0.2 mm)	4	1.25 - 2.5
	0600	21	SE	0.4	2	1002			28	94%	35% (0.3 mm)	5	2.5 - 4.0
	1200	22	S	0.5	2	1003			29	76%	64% (0.4 mm)	6	4.0 - 6.0
	1800	22	SSE	0.5	2	1001			29	89%	46% (0.5 mm)	7	6.0 - 9.0
12-06-24	0001	25	SSE	0.5	2	1002	32	26	29	90%	52% (0.5 mm)	8	9.0 - 14.0
	0600	24	SSE	0.5	2	1002			28	95%	64% (0.6 mm)	9	Over 14.0
	1200	25	S	0.5	2	1003			29	86%	61% (0.6 mm)		
	1800	16	SW	0.4	2	1001			29	88%	45% (0.5 mm)		
13-06-24	0001	19	SSE	0.4	2	1002	32	26	29	88%	56% (0.5 mm)		
	0600	22	SSE	0.4	2	1001			28	94%	65% (0.6 mm)		
	1200	21	SE	0.4	2	1002			29	83%	67% (0.7 mm)		
	1800	20	SSE	0.4	2	1000			29	88%	42% (0.4 mm)		

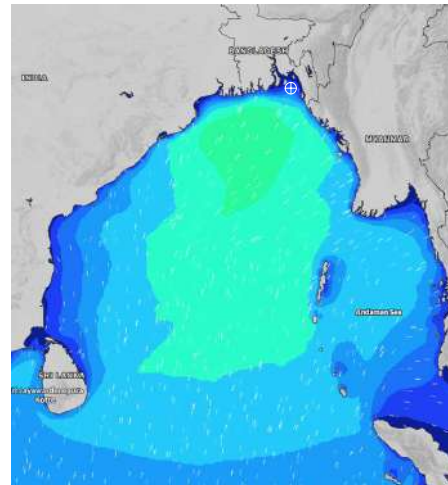
**10 June 24 Mon (Probability 70%)**



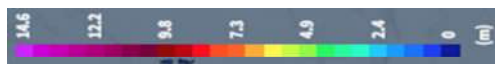
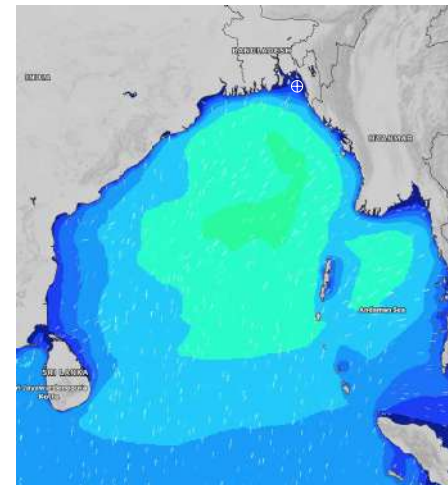
**11 June 24 Tue (Probability 60%)**



**12 June 24 Wed (Probability 50%)**



**13 June 24 Thu (Probability 50%)**



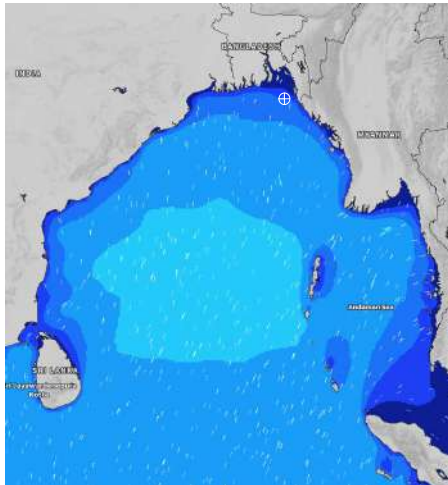
Significant wave height (m)

# MARINE WEATHER FORECAST- 20 NM WEST OF ELEPHANT POINT (Lat 21° 10'N, Long 091° 42'E)

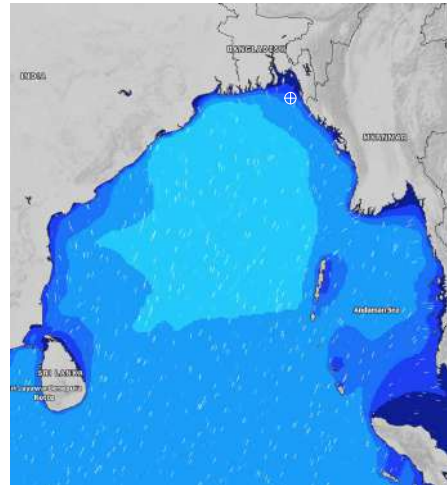
**DATE : 06 to 13 June 2024**

Date	Time	Max Wind Spd (kts)	Wind Direction	Wave Ht (m)	Sea State	Baro Pressure	Air Temp		Sea Surface Temp	Humidity (%)	Prob of Rain (%)	Sea State	Wave Ht (m)
							Max	Min					
06-06-24	0001	6	SW	1.6	4	1007	33	27	29	91%	46% (0.5 mm)	0	0
	0600	5	W	1.6	4	1006			29	95%	32% (0.2 mm)	1	0 - 0.1
	1200	7	SSW	1.5	4	1008			30	83%	28% (0.1 mm)	2	0.1 - 0.5
	1800	12	WSW	1.6	4	1005			29	87%	24% (0.1 mm)	3	0.5 - 1.25
07-06-24	0001	15	SW	1.7	4	1006	33	27	29	89%	41% (0.4 mm)	3	0.5 - 1.25
	0600	7	SW	1.8	4	1005			29	95%	35% (0.2 mm)	4	1.25 - 2.5
	1200	12		1.8	4	1007			30	82%	21% (0.0 mm)	5	2.5 - 4.0
	1800	17	SSW	2.0	4	1004			29	86%	20% (0.0 mm)	6	4.0 - 6.0
08-06-24	0001	14	SSW	2.2	4	1005	33	27	29	91%	41% (0.4 mm)	6	4.0 - 6.0
	0600	17	SSW	2.2	4	1004			29	97%	30% (0.2 mm)	7	6.0 - 9.0
	1200	10	S	2.3	4	1006			30	82%	21% (0.0 mm)	8	9.0 - 14.0
	1800	13	SSW	2.3	4	1002			29	85%	25% (0.1 mm)	9	Over 14.0
09-06-24	0001	14	S	2.3	4	1004	33	27	29	93%	41% (0.4 mm)		
	0600	13	SW	2.3	4	1003			29	95%	33% (0.2 mm)		
	1200	15	SSW	2.3	4	1004			30	85%	22% (0.0 mm)		
	1800	14	SSW	2.4	4	1003			29	83%	26% (0.1 mm)		

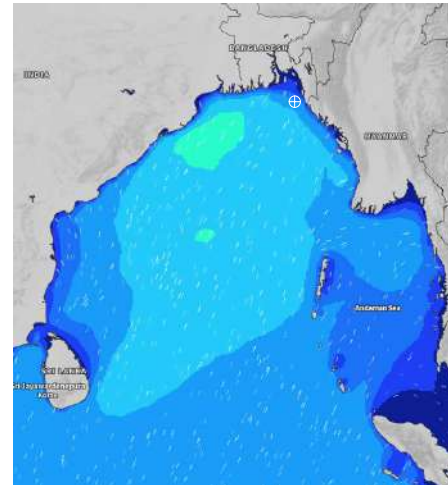
**06 June 24 Thu (Probability 98%)**



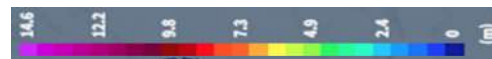
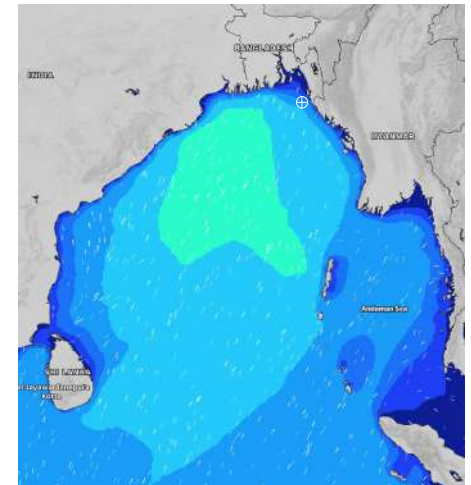
**07 June 24 Fri (Probability 95%)**



**08 June 24 Sat (Probability 90%)**



**09 June 24 Sun (Probability 80%)**



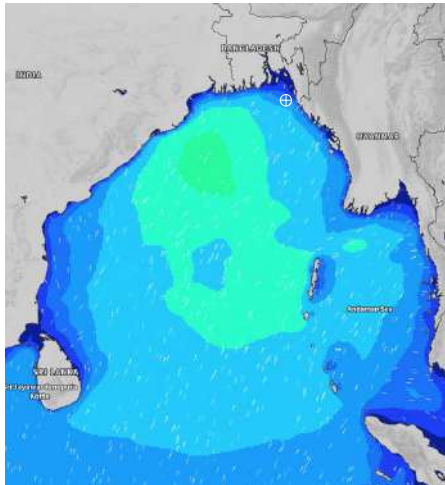
Significant wave height (m)

# MARINE WEATHER FORECAST- 20 NM WEST OF ELEPHANT POINT (Lat 21° 10'N, Long 091° 42'E)

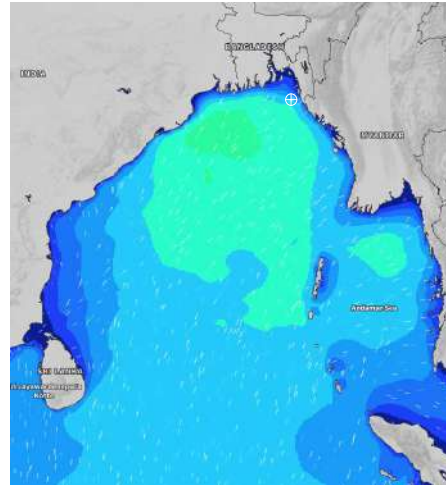
**DATE : 06 to 13 June 2024**

Date	Time	Max Wind Spd (kts)	Wind Direction	Wave Ht (m)	Sea State	Baro Pressure	Air Temp		Sea Surface Temp	Humidity (%)	Prob of Rain (%)	Sea State	Wave Ht (m)
							Max	Min					
10-06-24	0001	15	S	2.4	4	1003	32	26	29	89%	41% (0.4 mm)	0	0
	0600	12	SW	2.4	4	1002			29	95%	32% (0.2 mm)	1	0 - 0.1
	1200	12	S	2.4	4	1004			30	83%	45% (0.4 mm)	2	0.1 - 0.5
	1800	15	SSW	2.4	4	1002			29	87%	24% (0.1 mm)	3	0.5 - 1.25
11-06-24	0001	20	S	2.5	4	1004	32	26	29	92%	32% (0.2 mm)	4	1.25 - 2.5
	0600	21	SSW	2.7	5	1002			29	96%	28% (0.1 mm)	5	2.5 - 4.0
	1200	21	S	2.8	5	1004			30	81%	18% (0.0 mm)	6	4.0 - 6.0
	1800	22	SSW	2.9	5	1002			29	88%	20% (0.0 mm)	7	6.0 - 9.0
12-06-24	0001	22	S	2.9	5	1004	32	26	29	92%	40% (0.4 mm)	8	9.0 - 14.0
	0600	24	SSW	2.9	5	1002			29	96%	32% (0.2 mm)	9	Over 14.0
	1200	19	S	3.2	5	1004			30	83%	26% (0.1 mm)		
	1800	25	WSW	3.3	5	1001			29	88%	20% (0.0 mm)		
13-06-24	0001	18	S	3.0	5	1002	32	26	29	91%	43% (0.4 mm)		
	0600	21	S	2.8	5	1001			29	96%	35% (0.2 mm)		
	1200	20	SSW	2.7	5	1002			30	85%	19% (0.0 mm)		
	1800	23	SW	2.8	5	1000			29	88%	20% (0.0 mm)		

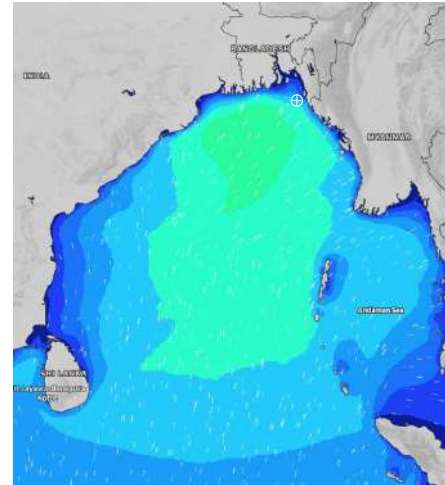
**10 June 24 Mon (Probability 70%)**



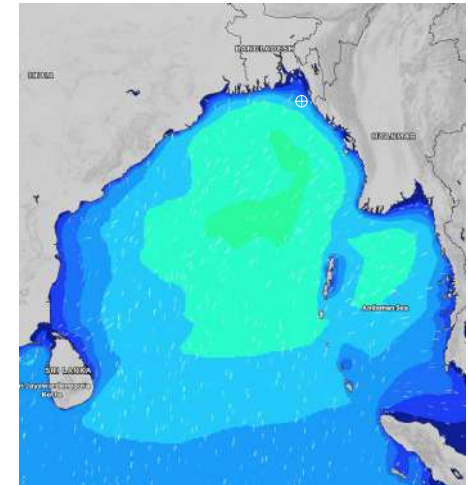
**11 June 24 Tue (Probability 60%)**



**12 June 24 Wed (Probability 50%)**



**13 June 24 Thu (Probability 50%)**

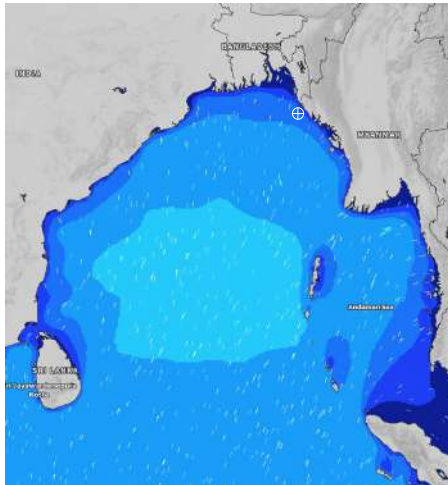


# MARINE WEATHER FORECAST- 15 NM WEST OF ST. MARTIN'S LIGHT HOUSE (Lat 20° 37'N, Long 092° 03'E)

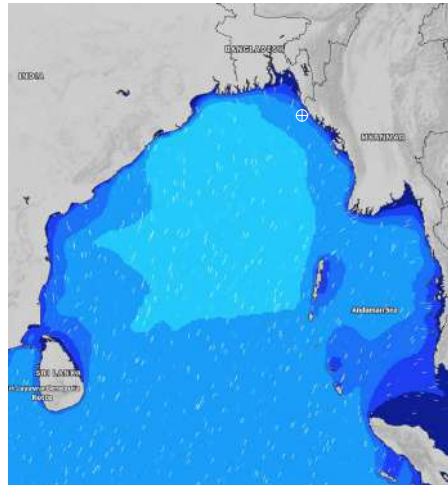
**DATE : 06 to 13 June 2024**

Date	Time	Max Wind Spd (kts)	Wind Direction	Wave Ht (m)	Sea State	Baro Pressure	Air Temp		Sea Surface Temp	Humidity (%)	Prob of Rain(%)	Sea State	Wave Ht (m)
							Max	Min					
06-06-24	0001	6	SW	1.6	4	1007	33	27	29	91%	36% (0.2 mm)	0	0
	0600	5	W	1.6	4	1006			29	95%	30% (0.2 mm)	1	0 - 0.1
	1200	7	SSW	1.6	4	1008			30	81%	22% (0.0 mm)	2	0.1 - 0.5
	1800	12	WSW	1.6	4	1005			29	86%	20% (0.0 mm)	3	0.5 - 1.25
07-06-24	0001	15	SW	1.7	4	1006	32	27	29	93%	41% (0.4 mm)	4	1.25 - 2.5
	0600	10	SW	1.8	4	1005			29	95%	31% (0.2 mm)	5	2.5 - 4.0
	1200	12	S	1.9	4	1007			30	82%	21% (0.0 mm)	6	4.0 - 6.0
	1800	17	SSW	2.1	4	1004			29	87%	18% (0.0 mm)	7	6.0 - 9.0
08-06-24	0001	14	SSW	2.2	4	1005	32	27	29	89%	36% (0.3 mm)	8	9.0 - 14.0
	0600	17	SSW	2.2	4	1004			29	94%	22% (0.0 mm)	9	Over 14.0
	1200	10	S	2.3	4	1006			30	82%	19% (0.0 mm)		
	1800	13	SSW	2.3	4	1002			29	86%	15% (0.0 mm)		
09-06-24	0001	14	S	2.3	4	1004	32	27	29	90%	40% (0.4 mm)		
	0600	13	SW	2.3	4	1003			29	92%	30% (0.2 mm)		
	1200	14	SW	2.3	4	1004			30	84%	19% (0.0 mm)		
	1800	12	WSW	2.3	4	1002			29	88%	14% (0.0 mm)		

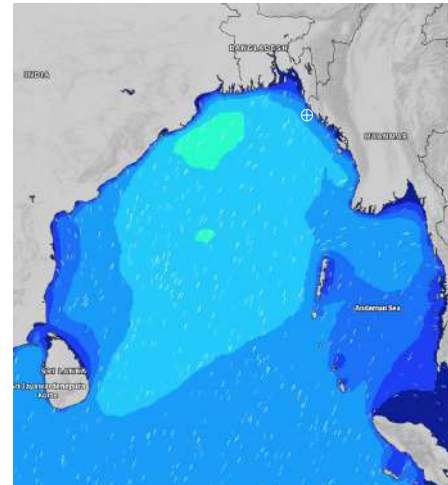
**06 June 24 Thu (Probability 98%)**



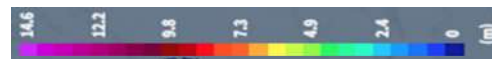
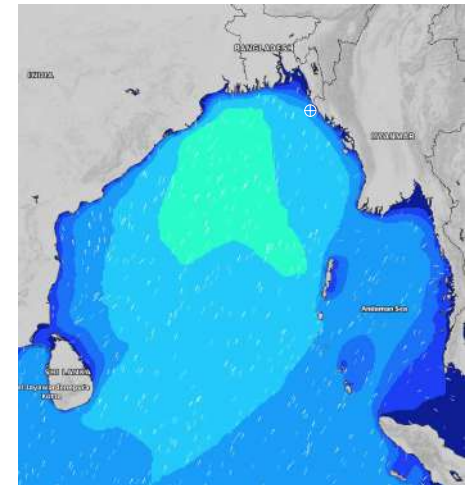
**07 June 24 Fri (Probability 95%)**



**08 June 24 Sat (Probability 90%)**



**09 June 24 Sun (Probability 80%)**



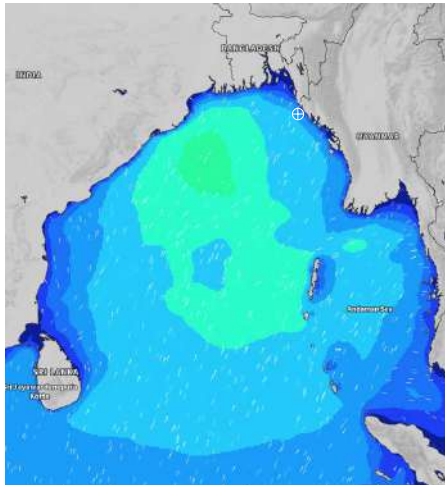
Significant wave height (m)

**MARINE WEATHER FORECAST- 15 NM WEST OF ST. MARTIN'S LIGHT HOUSE (Lat 20° 37'N, Long 092° 03'E)**

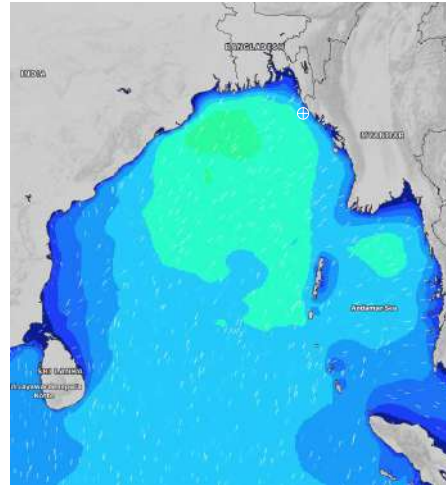
**DATE : 06 to 13 June 2024**

Date	Time	Max Wind Spd (kts)	Wind Direction	Wave Ht (m)	Sea State	Baro Pressure	Air Temp		Sea Surface Temp	Humidity (%)	Prob of Rain (%)	Sea State	Wave Ht (m)
							Max	Min					
10-06-24	0001	15	S	2.4	4	1003	32	26	29	92%	41% (0.4 mm)	0	0
	0600	12	SW	2.4	4	1002			29	96%	36% (0.3 mm)	1	0 - 0.1
	1200	12	S	2.4	4	1004			30	85%	24% (0.1 mm)	2	0.1 - 0.5
	1800	15	SSW	2.5	5	1004			30	89%	22% (0.0 mm)	3	0.5 - 1.25
11-06-24	0001	20	S	2.6	5	1002	32	26	29	93%	56% (0.5 mm)	4	1.25 - 2.5
	0600	21	SSW	2.8	5	1004			28	96%	45% (0.5 mm)	5	2.5 - 4.0
	1200	21	S	2.9	5	1002			29	84%	37% (0.4 mm)	6	4.0 - 6.0
	1800	22	SSW	2.9	5	1004			29	88%	48% (0.5 mm)	7	6.0 - 9.0
12-06-24	0001	22	S	2.9	5	1002	32	26	29	94%	56% (0.5 mm)	8	9.0 - 14.0
	0600	24	SSW	2.9	5	1004			28	96%	49% (0.5 mm)	9	Over 14.0
	1200	19	S	3.0	5	1001			29	87%	35% (0.2 mm)		
	1800	25	WSW	3.2	5	1002			29	89%	38% (0.3 mm)		
13-06-24	0001	15	S	3.3	5	1001	32	26	29	94%	57% (0.5 mm)		
	0600	21	S	3.0	5	1002			28	97%	46% (0.5 mm)		
	1200	20	SSW	2.9	5	1001			29	86%	38% (0.3 mm)		
	1800	23	SW	3.0	5	1000			29	89%	39% (0.4 mm)		

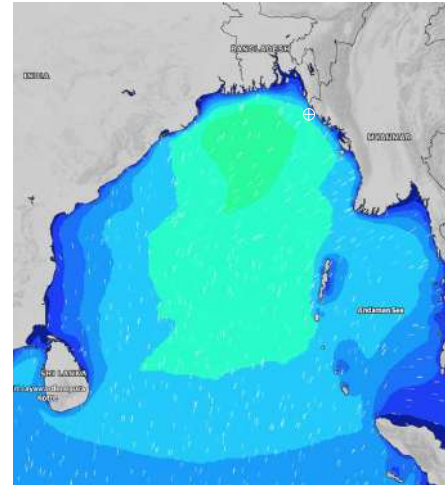
**10 June 24 Mon (Probability 70%)**



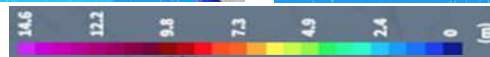
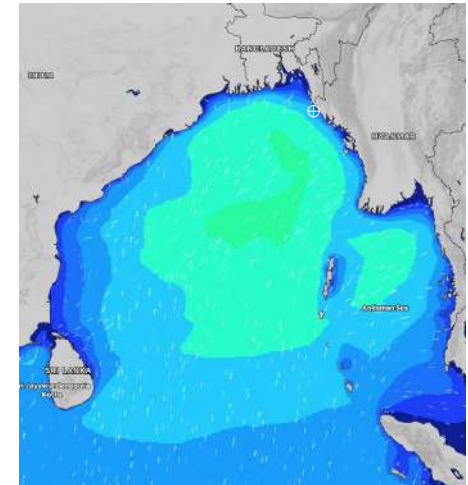
**11 June 24 Tue (Probability 60%)**



**12 June 24 Wed (Probability 50%)**



**13 June 24 Thu (Probability 50%)**



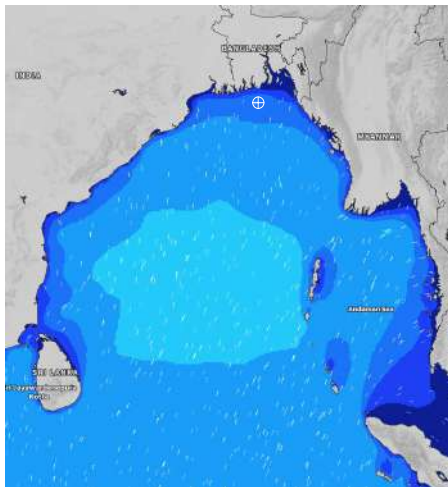
Significant wave height (m)

# MARINE WEATHER FORECAST- 40 NM ESE OF PAYRA FAIRWAY (Lat 21° 07'N, Long 090° 45'E)

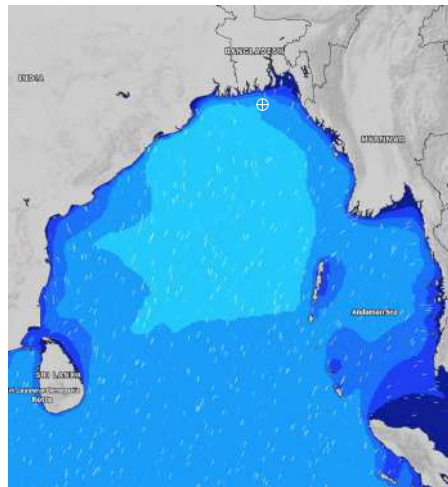
**DATE : 06 to 13 June 2024**

Date	Time	Max Wind Spd (kts)	Wind Direction	Wave Ht (m)	Sea State	Baro Pressure	Air Temp		Sea Surface Temp	Humidity (%)	Prob of Rain (%)	Sea State	Wave Ht (m)
							Max	Min					
06-06-24	0001	11	SSW	1.7	4	1006	33	27	29	91%	35% (0.2 mm)	0	0
	0600	8	WSW	1.6	4	1007			29	93%	30% (0.2 mm)	1	0 - 0.1
	1200	8	SW	1.7	4	1006			30	82%	21% (0.0 mm)	2	0.1 - 0.5
	1800	13	WSW	1.7	4	1005			30	87%	25% (0.1 mm)	3	0.5 - 1.25
07-06-24	0001	20	SW	1.9	4	1005	33	27	29	89%	23% (0.0 mm)	4	1.25 - 2.5
	0600	17	SW	2.1	4	1005			29	95%	25% (0.1 mm)	5	2.5 - 4.0
	1200	16	SSW	2.2	4	1004			30	84%	17% (0.0 mm)	6	4.0 - 6.0
	1800	21	SSW	2.4	4	1003			30	86%	26% (0.1 mm)	7	6.0 - 9.0
08-06-24	0001	21	SSW	2.5	4	1004	33	27	29	89%	28% (0.1 mm)	8	9.0 - 14.0
	0600	19	SSW	2.6	5	1005			29	95%	22% (0.0 mm)	9	Over 14.0
	1200	20	SSW	2.6	5	1004			30	86%	19% (0.0 mm)		
	1800	19	SSW	2.6	5	1002			30	89%	26% (0.1 mm)		
09-06-24	0001	20	SSW	2.6	5	1002	33	27	29	89%	29% (0.2 mm)		
	0600	17	SSW	2.7	5	1003			29	94%	24% (0.1 mm)		
	1200	20	SSW	2.6	5	1002			30	83%	16% (0.0 mm)		
	1800	19	SSW	2.6	5	1001			30	89%	22% (0.0 mm)		

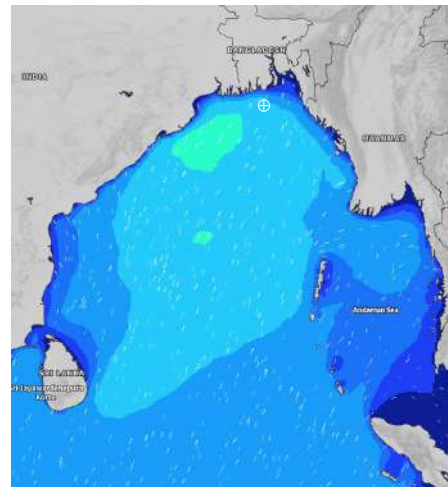
**06 June 24 Thu (Probability 98%)**



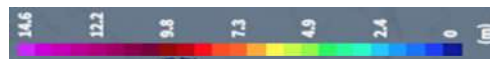
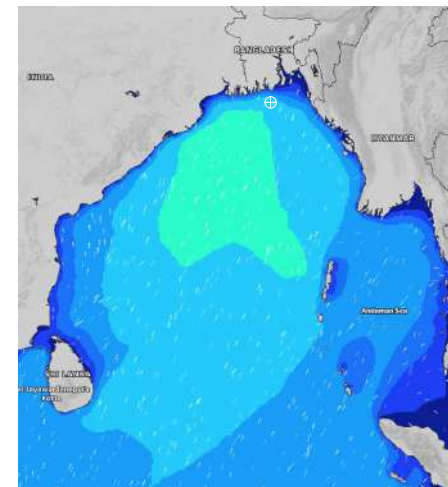
**07 June 24 Fri (Probability 95%)**



**08 June 24 Sat (Probability 90%)**



**09 June 24 Sun (Probability 80%)**



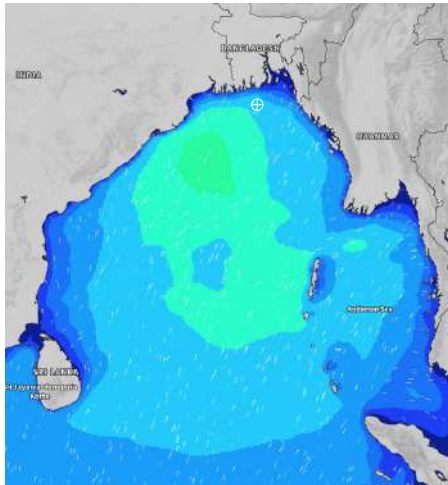
Significant wave height (m)

**MARINE WEATHER FORECAST- 40 NM ESE OF PAYRA FAIRWAY (Lat 21° 07'N, Long 090° 45'E)**

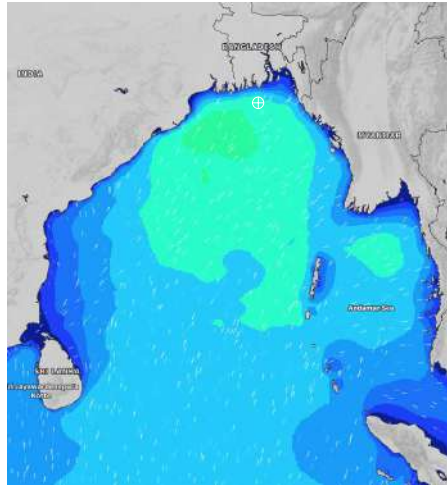
**DATE : 06 to 13 June 2024**

Date	Time	Max Wind Spd (kts)	Wind Direction	Wave Ht (m)	Sea Stae	Baro Pressure	Air Temp		Sea Surface Temp	Humidity (%)	Prob of Rain (%)	Sea State	Wave Ht (m)
							Max	Min					
10-06-24	0001	21	SSW	2.7	5	1002	32	26	29	92%	36% (0.2 mm)	0	0
	0600	17	SSW	2.7	5	1002			29	96%	25% (0.1 mm)	1	0 - 0.1
	1200	21	SSW	2.7	5	1003			30	83%	18% (0.0 mm)	2	0.1 - 0.5
	1800	22	S	2.7	5	1001			30	84%	25% (0.1 mm)	3	0.5 - 1.25
11-06-24	0001	27	SSW	2.9	5	1002	32	26	29	92%	56% (0.5 mm)	4	1.25 - 2.5
	0600	24	SSW	3.1	5	1002			29	97%	45% (0.4 mm)	5	2.5 - 4.0
	1200	27	SSW	3.3	5	1001			30	82%	32% (0.2 mm)	6	4.0 - 6.0
	1800	23	SSW	3.2	5	1000			29	86%	24% (0.1 mm)	7	6.0 - 9.0
12-06-24	0001	26	S	3.1	5	1001	32	26	29	93%	36% (0.4 mm)	8	9.0 - 14.0
	0600	23	SSW	2.3	5	1000			29	95%	22% (0.0 mm)	9	Over 14.0
	1200	25	SW	2.6	5	1001			30	82%	21% (0.0 mm)		
	1800	16	SSW	3.0	5	1000			29	86%	26% (0.1 mm)		
13-06-24	0001	23	S	3.3	5	1001	32	26	29	92%	53% (0.5 mm)		
	0600	21	SSW	3.0	5	1002			29	97%	26% (0.1 mm)		
	1200	16	SW	2.9	5	1001			30	82%	19% (0.0 mm)		
	1800	18	SSW	3.0	5	1000			29	88%	26% (0.1 mm)		

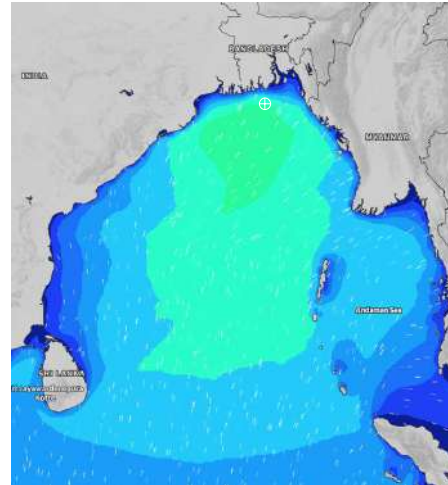
**10 June 24 Mon (Probability 70%)**



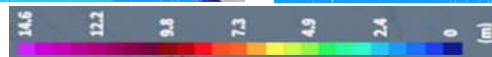
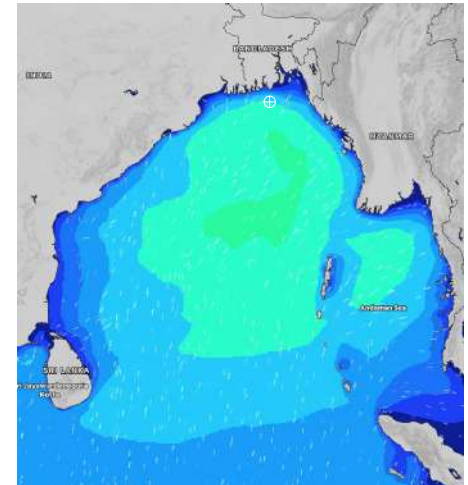
**11 June 24 Tue (Probability 60%)**



**12 June 24 Wed (Probability 50%)**



**13 June 24 Thu (Probability 50%)**



Significant wave height (m)

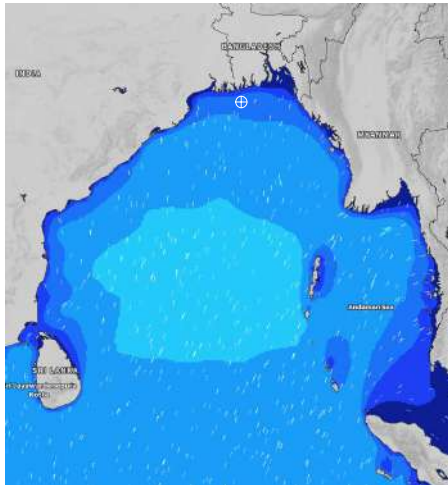


# MARINE WEATHER FORECAST- 10 NM SOUTH OF MONGLA FAIRWAY (Lat 21° 16'N, Long 089° 34'E)

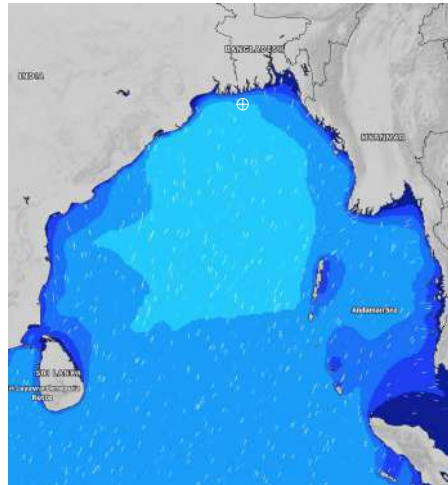
**DATE : 06 to 13 June 2024**

Date	Time	Max Wind Spd (kts)	Wind Direction	Wave Ht (m)	Sea State	Baro Pressure	Air Temp		Sea Surface Temp	Humidity (%)	Prob of Rain (%)	Sea State	Wave Ht (m)
							Max	Min					
06-06-24	0001	15	SSW	1.5	4	1006	33	26	29	89%	24% (0.1 mm)	0	0
	0600	11	SSW	1.5	4	1006			29	95%	21% (0.0 mm)	1	0 - 0.1
	1200	12	SSW	1.5	4	1007			30	83%	19% (0.0 mm)	2	0.1 - 0.5
	1800	16	SSW	1.6	4	1003			30	86%	16% (0.0 mm)	3	0.5 - 1.25
07-06-24	0001	23	SW	2.0	4	1005	33	26	29	88%	36% (0.3 mm)	4	1.25 - 2.5
	0600	26	SW	2.3	4	1003			29	95%	25% (0.1 mm)	5	2.5 - 4.0
	1200	20	SSW	2.3	4	1004			30	83%	20% (0.0 mm)	6	4.0 - 6.0
	1800	26	SSW	2.6	5	1001			30	86%	16% (0.0 mm)	7	6.0 - 9.0
08-06-24	0001	26	SW	2.9	5	1003	33	26	29	89%	36% (0.3 mm)	8	9.0 - 14.0
	0600	21	SSW	2.8	5	1002			29	95%	24% (0.1 mm)	9	Over 14.0
	1200	24	SSW	2.7	5	1003			30	82%	19% (0.0 mm)		
	1800	23	SSW	2.8	5	1001			30	87%	18% (0.0 mm)		
09-06-24	0001	25	SSW	2.7	5	1002	33	26	29	90%	37% (0.3 mm)		
	0600	20	SSW	2.9	5	1001			29	95%	25% (0.1 mm)		
	1200	24	SW	2.9	5	1002			30	82%	19% (0.0 mm)		
	1800	23	SSW	2.8	5	1000			30	88%	18% (0.0 mm)		

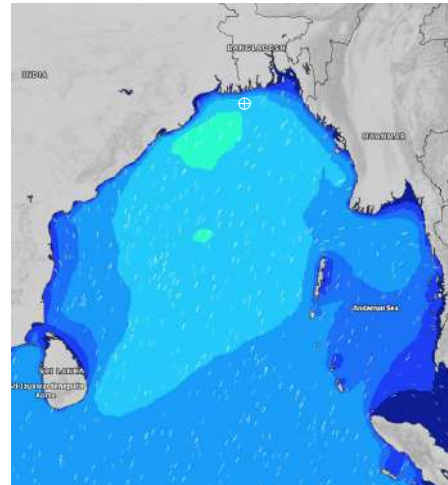
**06 June 24 Thu (Probability 98%)**



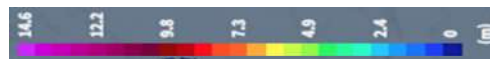
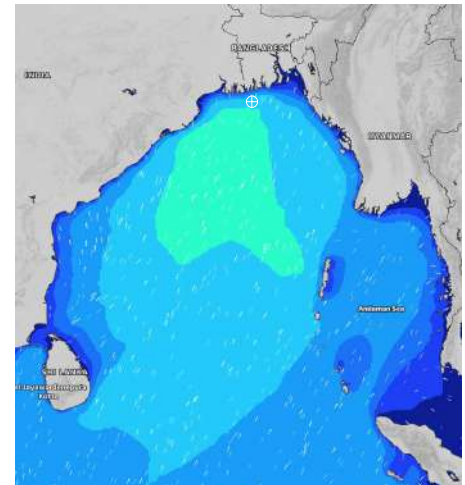
**07 June 24 Fri (Probability 95%)**



**08 June 24 Sat (Probability 90%)**



**09 June 24 Sun (Probability 80%)**



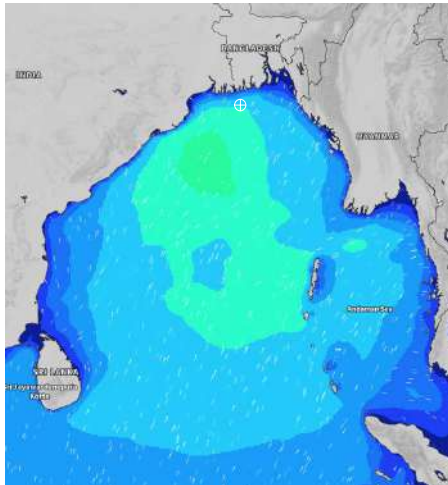
Significant wave height (m)

# MARINE WEATHER FORECAST- 10 NM SOUTH OF MONGLA FAIRWAY (Lat 21° 16'N, Long 089° 34'E)

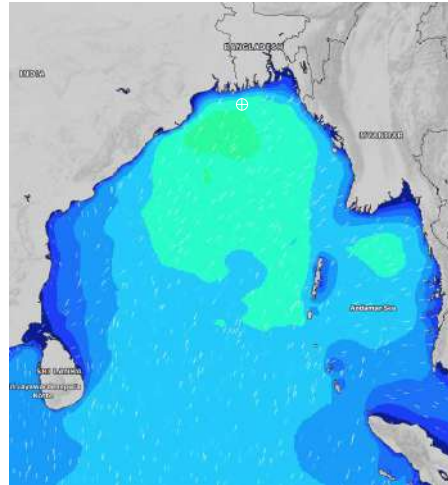
**DATE : 06 to 13 June 2024**

Date	Time	Max Wind Spd (kts)	Wind Direction	Wave Ht (m)	Sea State	Baro Pressure	Air Temp		Sea Surface Temp	Humidity (%)	Prob of Rain (%)	Sea State	Wave Ht (m)
							Max	Min					
10-06-24	0001	22	SSW	2.8	5	1002	32	26	29	95%	41% (0.4 mm)	0	0
	0600	19	SSW	2.7	5	1001			29	97%	30% (0.2 mm)	1	0 - 0.1
	1200	22	SSW	2.8	5	1002			30	86%	24% (0.1 mm)	2	0.1 - 0.5
	1800	23	S	2.8	5	1000			30	89%	23% (0.0 mm)	3	0.5 - 1.25
11-06-24	0001	26	SSW	2.9	5	1001	32	26	29	93%	42% (0.4 mm)	4	1.25 - 2.5
	0600	23	SSW	3.2	5	1000			29	95%	36% (0.2 mm)	5	2.5 - 4.0
	1200	23	SSW	3.3	5	1001			30	86%	28% (0.1 mm)	6	4.0 - 6.0
	1800	24	S	3.2	5	1000			30	89%	25% (0.1 mm)	7	6.0 - 9.0
12-06-24	0001	23	SSW	3.0	5	1001	32	26	29	94%	45% (0.5 mm)	8	9.0 - 14.0
	0600	22	SSW	3.2	5	1000			29	96%	38% (0.4 mm)	9	Over 14.0
	1200	23	SSE	3.5	5	1001			30	86%	27% (0.1 mm)		
	1800	25	S	3.1	5	1000			30	88%	29% (0.2 mm)		
13-06-24	0001	19	SSW	2.9	5	1001	32	26	29	95%	52% (0.5 mm)		
	0600	20	SW	2.9	5	1000			29	97%	38% (0.3 mm)		
	1200	22	SSW	2.9	5	1001			30	86%	23% (0.0 mm)		
	1800	23	SSW	3.0	5	1000			30	89%	29% (0.2 mm)		

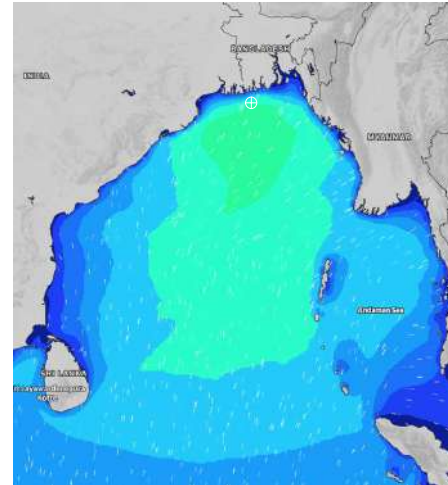
**10 June 24 Mon (Probability 70%)**



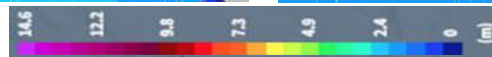
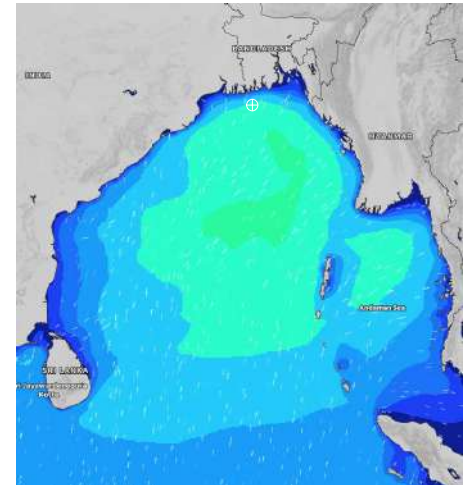
**11 June 24 Tue (Probability 60%)**



**12 June 24 Wed (Probability 50%)**



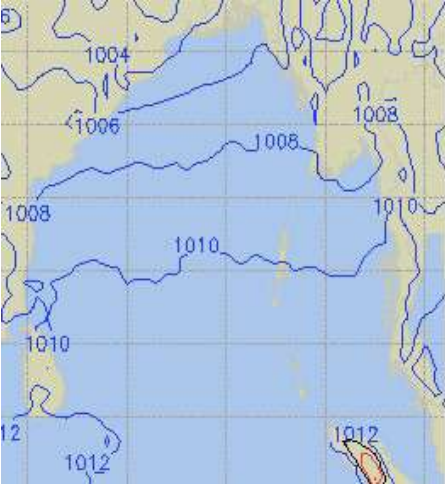
**13 June 24 Thu (Probability 50%)**



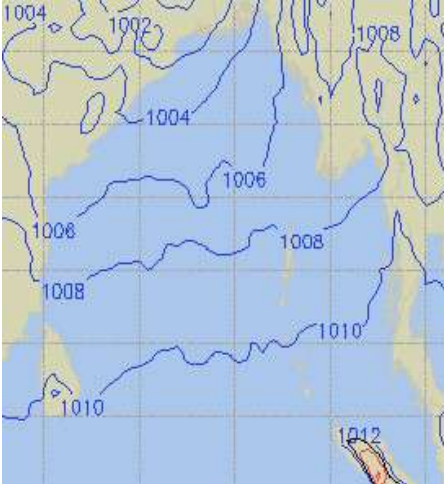
Significant wave height (m)

**PREDICTED SURFACE PRESSURE FORECAST (06 to 12 June 2024)**

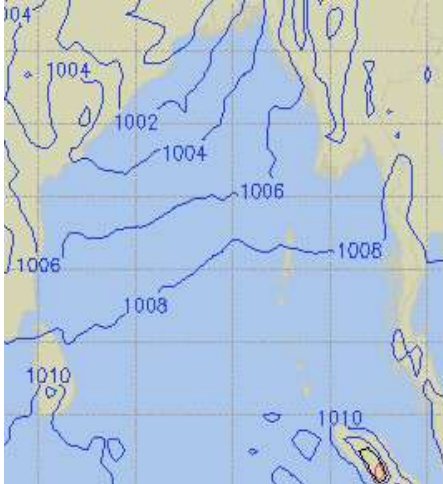
**06 June 24 Thu (Probability 98%)**



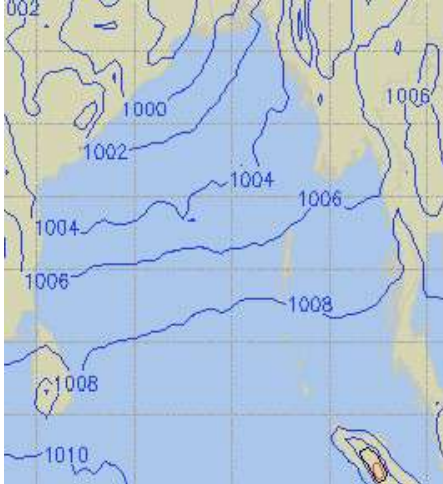
**07 June 24 Fri (Probability 95%)**



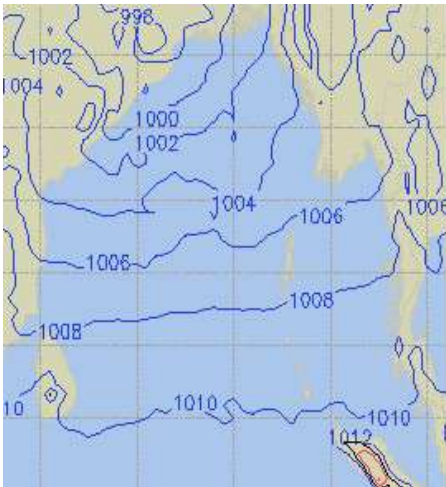
**08 June 24 Sat (Probability 90%)**



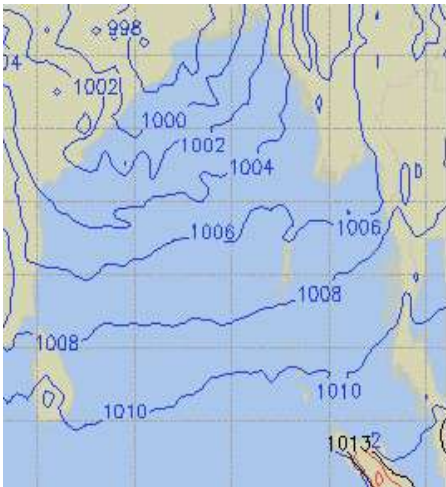
**09 June 24 Sun (Probability 80%)**



**10 June 24 Mon (Probability 70%)**



**11 June 24 Tue (Probability 60%)**



**12 June 24 Wed (Probability 50%)**

