



**SUMMARY OF MARINE WEATHER FORECAST**  
**COASTAL AREA OF BANGLADESH**  
**DATE: 06 to 13 May 2026**



Fleet Forecast	The trough of low persists from West Bengal to North Bay.
Wind Direction, Speed	South-west/Westerly 08-12 kts, temporary gusting up to 20 kts.
Wave Height & Sea State	Ctg Outer Anchorage: 0.2 to 0.3 m (Sea state: 2) Abeam to Cox's Bazar: 0.7 to 1.0 m (Sea state: 3) St. Martin's Island: 0.7 to 1.0 m (Sea state 3) Payra Fairway Buoy: 0.7 to 1.0 m (Sea state: 3) Mongla Fairway Buoy: 0.7 to 1.1 m (Sea state: 3 ) Outer EEZ: 0.8 to 1.1 m (Sea state: 3)
Sea Surface Temperature	25° C - 29° C
Baro Pressure	1007-1011 mb
Rainfall	Partly Cloudy to cloudy sky with light rain/thunder showers with gusty wind is likely to occur over Bay of Bengal and adjoining area.
Fog & Visibility	Hazy condition over the Bay of Bengal & coastal area, Visibility 1.0 – 5.0 km

**Marine Weather Outlook (06 to 13 May 2026):**

- Partly Cloudy to cloudy sky with light rain/thunder showers with gusty wind is likely to occur over Bay of Bengal and adjoining area.
- Rainfall activity may decrease.
- Hazy condition over the Bay of Bengal & coastal area.

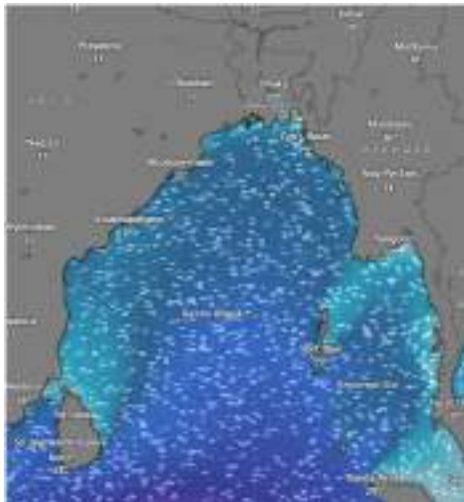


## MARINE WEATHER FORECAST (06 to 13 May 2026) PATENGA POINT (22° 12' N, 091° 38' E)

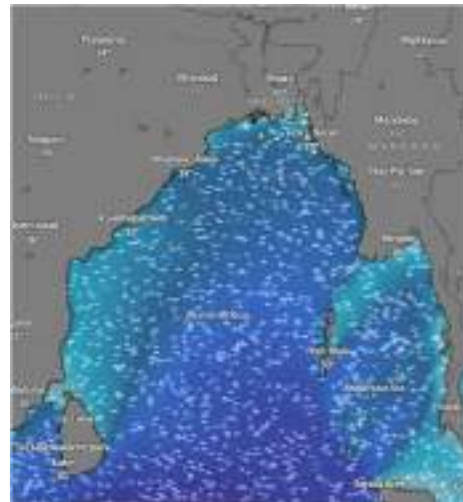


Date	Time	Air Temp (°C)		Sea Surface Temp (°C)	Baro Pressure (mbar)	Wind Direction	Wind Spd (kts)		Wave Ht (m)	Sea State	Humidity (%)	Prob of Rain (%)	Amount of Rain (mm)
		Max	Min				Gusting	Avg					
06-05-26 (Wednesday)	0001	32	27	26	1009	SW	11	07	0.2	2	89	22	0.0
	0600			25	1010	E	05	03	0.2	2	91	24	0.0
	1200			29	1008	SW	11	07	0.2	2	76	10	0.0
	1800			27	1007	SW	07	04	0.2	2	81	24	0.1
07-05-26 (Thursday)	0001	33	27	26	1010	SW	11	07	0.3	2	90	20	0.0
	0600			25	1011	SE	10	07	0.3	2	91	24	0.1
	1200			29	1009	SE	09	05	0.2	2	79	12	0.0
	1800			27	1008	SW	07	04	0.2	2	82	16	0.0
08-05-26 (Friday)	0001	33	27	26	1010	SW	05	03	0.2	2	89	12	0.0
	0600			25	1011	NE	07	04	0.2	2	91	20	0.1
	1200			29	1009	W	11	07	0.2	2	74	09	0.0
	1800			27	1008	W	07	04	0.2	2	80	22	0.1
09-05-26 (Saturday)	0001	33	27	26	1009	NW	11	07	0.3	2	90	15	0.0
	0600			25	1010	NNW	10	06	0.2	2	91	13	0.0
	1200			29	1008	NW	12	08	0.2	2	69	10	0.0
	1800			27	1007	NW	11	07	0.2	2	77	12	0.0

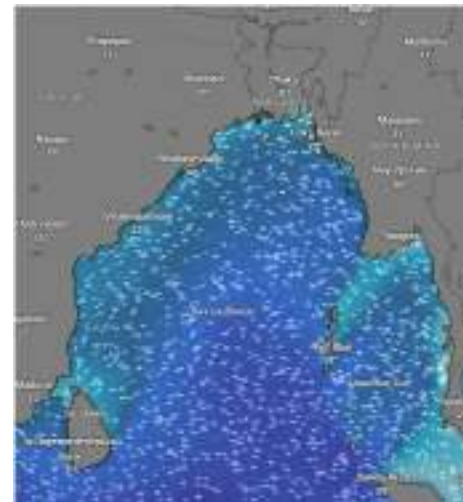
06 May 2026



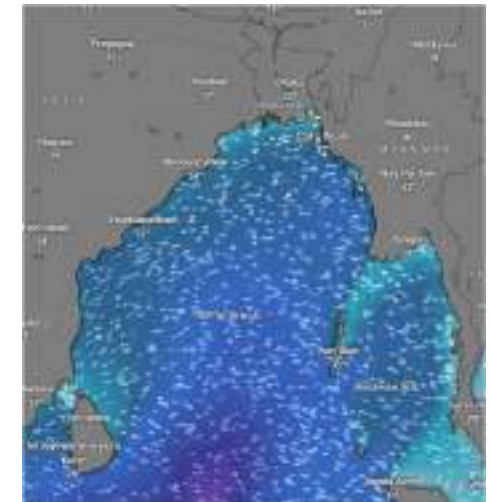
07 May 2026



08 May 2026



09 May 2026



Significant wave height (m)



# MARINE WEATHER FORECAST (06 to 13 May 2026)

## PATENGA POINT (22° 12' N, 091° 38' E)



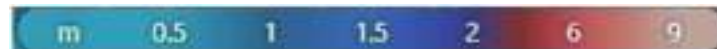
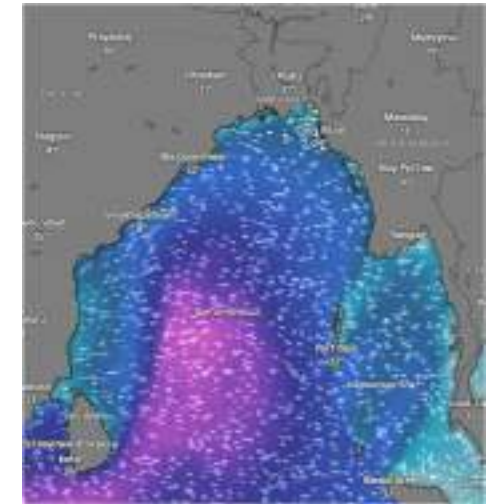
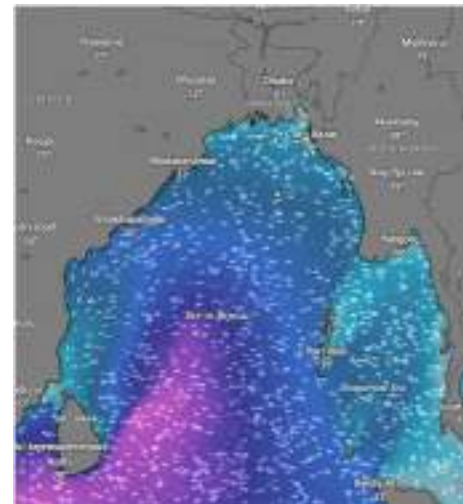
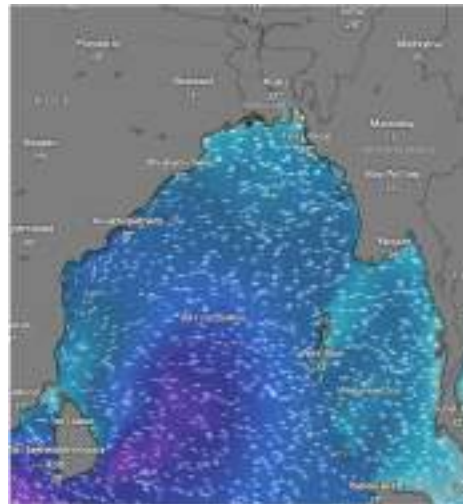
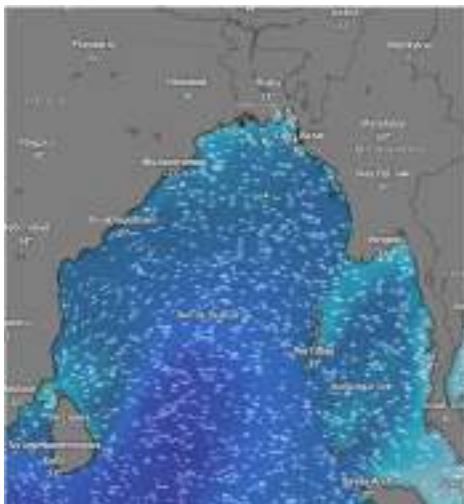
Date	Time	Air Temp (°C)		Sea Surface Temp (°C)	Baro Pressure (mbar)	Wind Direction	Wind Spd (kts)		Wave Ht (m)	Sea State	Humidity (%)	Prob of Rain (%)	Amount of Rain (mm)
		Max	Min				Gusting	Avg					
10-05-26 (Sunday)	0001	32	27	26	1009	NNW	10	05	0.3	2	86	20	0.1
	0600			25	1010	NNW	07	04	0.2	2	89	24	0.1
	1200			29	1008	NW	12	08	0.2	2	77	10	0.0
	1800			27	1007	NW	10	06	0.3	2	87	20	0.1
11-05-26 (Monday)	0001	32	26	26	1009	W	10	06	0.3	2	88	42	0.4
	0600			25	1010	SW	09	05	0.2	2	91	35	0.3
	1200			29	1008	SSW	10	06	0.2	2	82	24	0.1
	1800			27	1007	NE	12	08	0.2	2	84	22	0.1
12-05-26 (Tuesday)	0001	32	26	26	1009	W	07	04	0.2	2	89	41	0.4
	0600			25	1010	N	05	03	0.2	2	90	40	0.4
	1200			29	1008	SSW	11	07	0.2	2	77	32	0.3
	1800			27	1007	SSW	10	06	0.2	2	86	24	0.1
13-05-26 (Wednesday)	0001	32	26	26	1008	W	10	06	0.2	2	88	35	0.3
	0600			25	1009	N	10	05	0.2	2	91	31	0.2
	1200			29	1007	SSW	10	06	0.2	2	75	30	0.2
	1800			27	1006	S	13	06	0.2	2	85	26	0.1

10 May 2026

11 May 2026

12 May 2026

13 May 2026



Significant wave height (m)

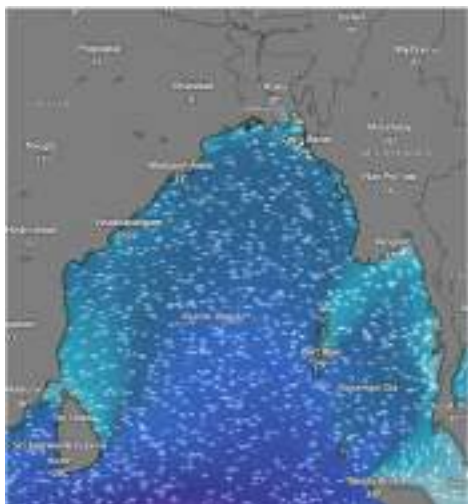


## MARINE WEATHER FORECAST (06 to 13 May 2026) ABEAM TO KUTUBDIA (21° 51' N, 091° 40' E)

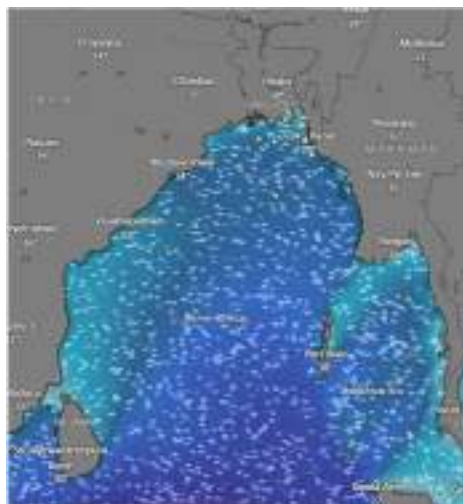


Date	Time	Air Temp (°C)		Sea Surface Temp (°C)	Baro Pressure (mbar)	Wind Direction	Wind Spd (kts)		Wave Ht (m)	Sea State	Humidity (%)	Prob of Rain (%)	Amount of Rain (mm)
		Max	Min				Gusting	Avg					
06-05-26 (Wednesday)	0001	32	27	26	1009	W	14	10	0.4	2	88	22	0.1
	0600			25	1010	SE	07	04	0.4	2	91	24	0.1
	1200			29	1008	SSW	09	05	0.3	2	76	10	0.0
	1800			27	1007	SW	10	06	0.3	2	81	22	0.1
07-05-26 (Thursday)	0001	33	27	26	1010	SW	13	09	0.4	2	90	20	0.1
	0600			25	1011	SE	11	07	0.4	2	91	24	0.1
	1200			29	1009	W	05	03	0.4	2	79	12	0.0
	1800			27	1008	W	07	04	0.3	2	82	16	0.0
08-05-26 (Friday)	0001	33	27	26	1010	W	10	06	0.3	2	89	12	0.0
	0600			25	1011	NE	11	06	0.4	2	91	20	0.1
	1200			29	1009	NW	07	04	0.3	2	74	09	0.0
	1800			27	1008	NW	11	07	0.4	2	80	22	0.1
09-05-26 (Saturday)	0001	33	27	26	1009	NW	13	09	0.3	2	90	15	0.0
	0600			25	1010	N	14	10	0.4	2	91	13	0.0
	1200			29	1008	NNW	12	08	0.4	2	69	10	0.0
	1800			27	1007	NW	13	09	0.4	2	77	12	0.0

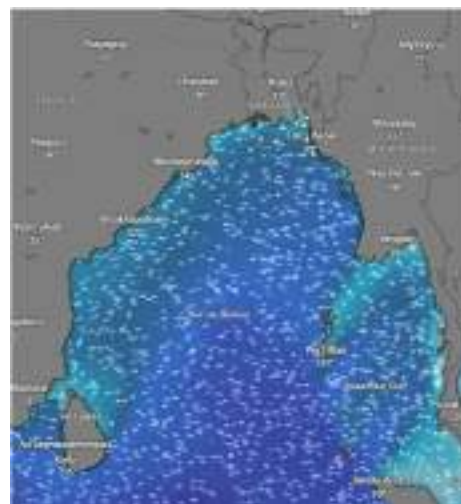
06 May 2026



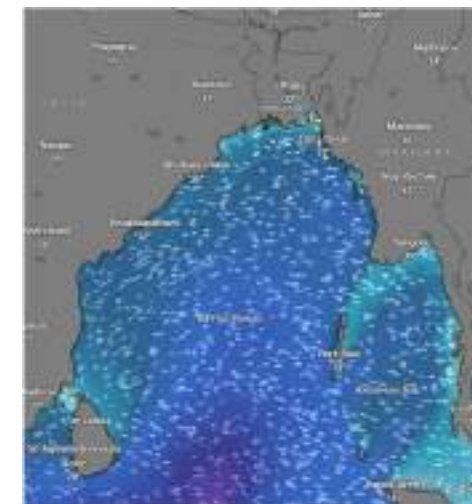
07 May 2026



08 May 2026



09 May 2026



Significant wave height (m)

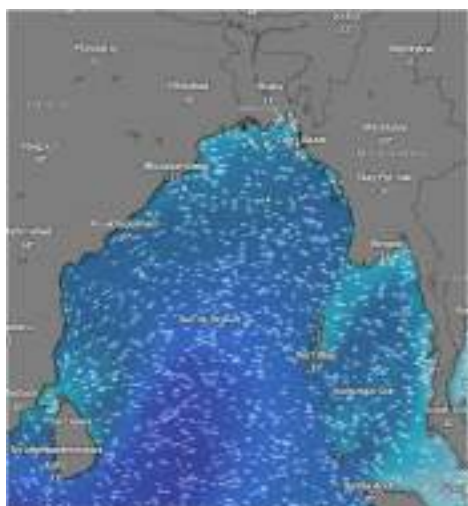


## MARINE WEATHER FORECAST (06 to 13 May 2026) ABEAM TO KUTUBDIA (21° 51' N, 091° 40' E)

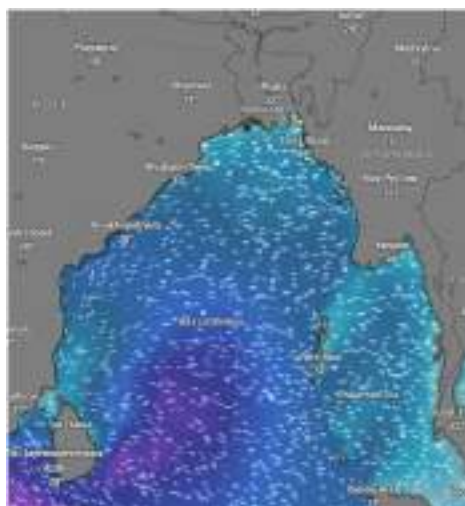


Date	Time	Air Temp (°C)		Sea Surface Temp (°C)	Baro Pressure (mbar)	Wind Direction	Wind Spd (kts)		Wave Ht (m)	Sea State	Humidity (%)	Prob of Rain (%)	Amount of Rain (mm)
		Max	Min				Gusting	Avg					
10-05-26 (Sunday)	0001	32	27	26	1008	NW	13	09	0.4	2	86	20	0.1
	0600			25	1009	N	10	07	0.3	2	89	24	0.1
	1200			29	1007	NW	13	09	0.3	2	77	10	0.0
	1800			27	1006	NW	09	05	0.4	2	87	20	0.1
11-05-26 (Monday)	0001	32	26	26	1008	W	11	07	0.3	2	88	42	0.4
	0600			25	1009	SW	05	04	0.3	2	91	35	0.3
	1200			29	1007	SSW	10	06	0.3	2	82	24	0.1
	1800			27	1006	W	09	05	0.3	2	84	22	0.1
12-05-26 (Tuesday)	0001	32	26	26	1008	SW	05	03	0.2	2	89	41	0.4
	0600			25	1009	E	07	04	0.3	2	90	40	0.4
	1200			29	1007	SSW	13	09	0.4	2	77	32	0.3
	1800			27	1006	S	12	08	0.4	2	86	24	0.1
13-05-26 (Wednesday)	0001	32	26	26	1008	SW	10	07	0.2	2	87	21	0.1
	0600			25	1009	E	10	06	0.2	2	87	34	0.2
	1200			29	1007	SSW	11	06	0.2	2	78	30	0.2
	1800			27	1006	S	12	07	0.3	2	89	22	0.1

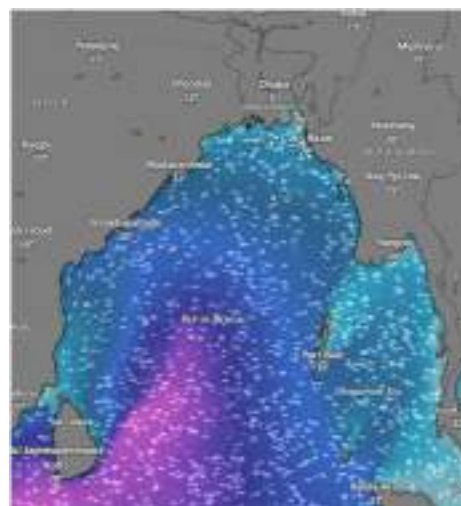
10 May 2026



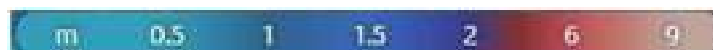
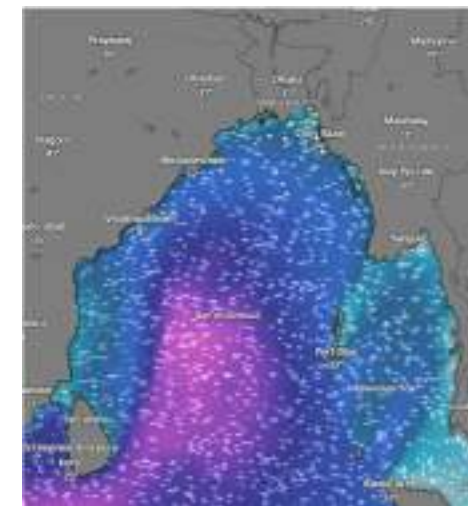
11 May 2026



12 May 2026



13 May 2026



Significant wave height (m)



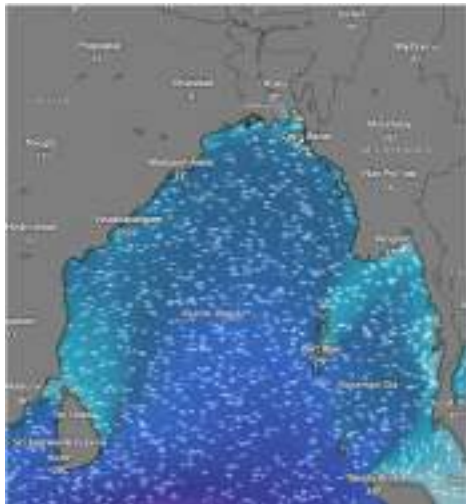
# MARINE WEATHER FORECAST (06 to 13 May 2026)

## ABEAM TO ELEPHANT POINT (21° 11' N, 091° 52' E)

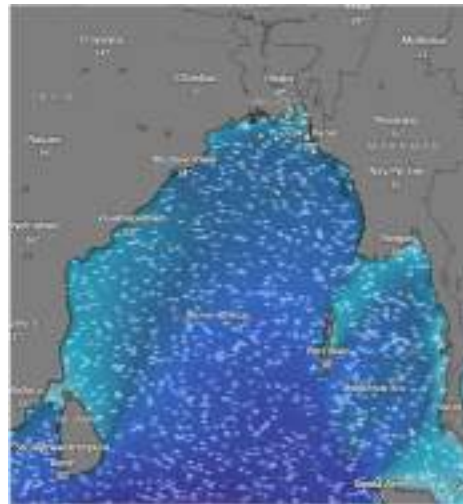


Date	Time	Air Temp (°C)		Sea Surface Temp (°C)	Baro Pressure (mbar)	Wind Direction	Wind Spd (kts)		Wave Ht (m)	Sea State	Humidity (%)	Prob of Rain (%)	Amount of Rain (mm)
		Max	Min				Gusting	Avg					
06-05-26 (Wednesday)	0001	32	27	26	1009	NW	12	08	0.8	3	89	22	0.1
	0600			25	1010	SE	09	05	0.8	3	91	24	0.1
	1200			29	1008	SW	09	05	0.8	3	76	10	0.0
	1800			27	1007	SW	11	07	0.8	3	81	22	0.1
07-05-26 (Thursday)	0001	33	27	26	1010	SW	12	08	0.8	3	90	20	0.1
	0600			25	1011	NNW	13	09	0.9	3	91	24	0.1
	1200			29	1009	NNW	09	05	0.9	3	79	12	0.0
	1800			27	1008	NW	10	06	0.9	3	82	16	0.0
08-05-26 (Friday)	0001	33	27	26	1010	W	10	06	0.9	3	89	12	0.0
	0600			25	1011	N	12	08	0.9	3	91	20	0.1
	1200			29	1009	NNW	11	07	0.9	3	74	09	0.0
	1800			27	1008	NNW	13	09	0.9	3	80	22	0.1
09-05-26 (Saturday)	0001	33	27	26	1009	NNW	14	10	0.9	3	90	15	0.0
	0600			25	1010	N	11	07	0.9	3	91	13	0.0
	1200			29	1008	NNW	14	10	0.9	3	69	10	0.0
	1800			27	1007	NW	16	12	0.9	3	77	12	0.0

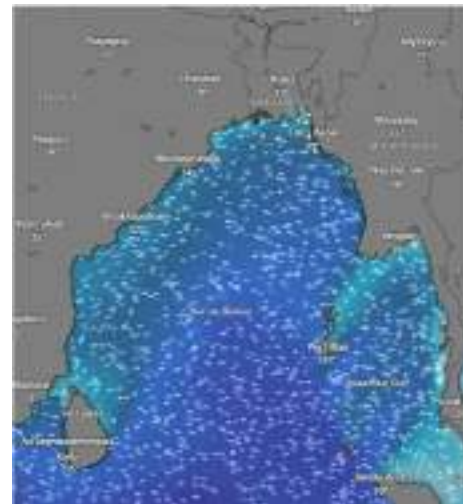
06 May 2026



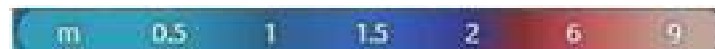
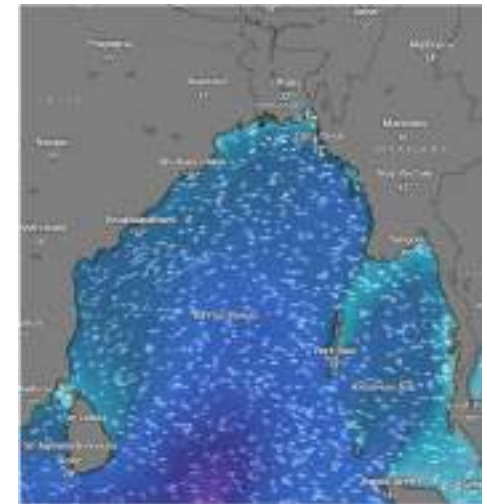
07 May 2026



08 May 2026



09 May 2026



Significant wave height (m)

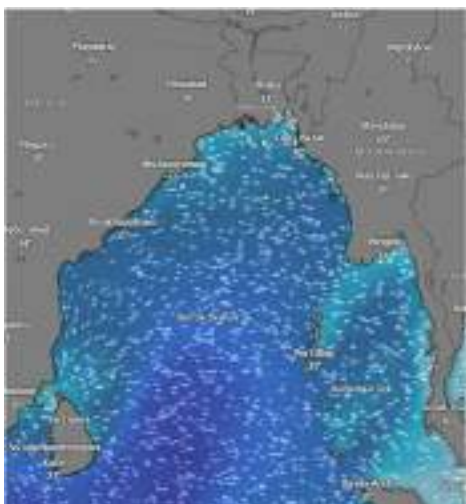


# MARINE WEATHER FORECAST (06 to 13 May 2026) ABEAM TO ELEPHANT POINT (21° 11' N, 091° 52' E)

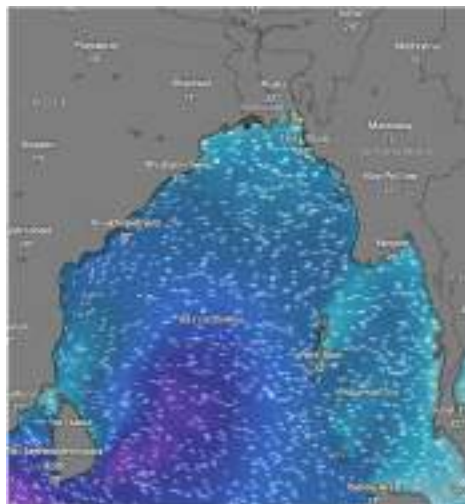


Date	Time	Air Temp (°C)		Sea Surface Temp (°C)	Baro Pressure (mbar)	Win Direction	Wind Spd (kts)		Wave Ht (m)	Sea State	Humidity (%)	Prob of Rain (%)	Amount of Rain (mm)
		Max	Min				Gusting	Avg					
10-05-26 (Sunday)	0001	32	27	26	1008	NNW	17	13	0.9	3	86	20	0.1
	0600			25	1009	N	13	09	0.8	3	89	24	0.1
	1200			29	1007	NNW	15	11	0.8	3	77	10	0.0
	1800			27	1006	NW	12	08	0.8	3	87	20	0.1
11-05-26 (Monday)	0001	32	26	26	1008	SW	09	05	0.7	3	88	42	0.4
	0600			25	1009	SSE	07	04	0.7	3	91	35	0.3
	1200			29	1007	SSE	11	07	0.6	3	82	24	0.1
	1800			27	1006	S	10	06	0.6	3	84	22	0.1
12-05-26 (Tuesday)	0001	32	26	26	1008	SSW	05	03	0.6	3	89	41	0.4
	0600			25	1009	SE	11	07	0.7	3	90	40	0.4
	1200			29	1007	SSE	15	11	0.7	3	77	32	0.3
	1800			27	1006	SSE	13	09	0.8	3	86	24	0.1
13-05-26 (Wednesday)	0001	32	26	26	1008	SSW	09	04	0.7	3	88	38	0.3
	0600			25	1009	SE	12	09	0.8	3	87	35	0.3
	1200			29	1007	SSE	12	09	1.0	3	75	30	0.2
	1800			27	1006	SSE	11	08	1.1	3	87	23	0.1

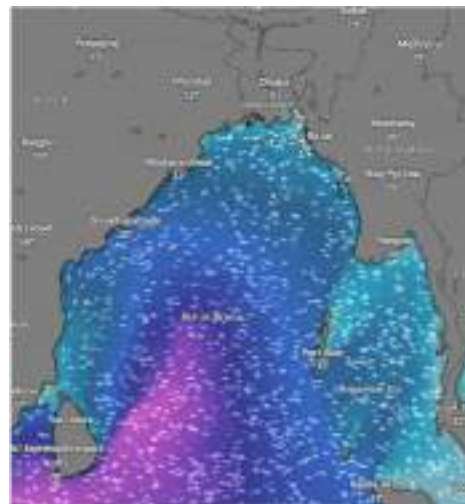
10 May 2026



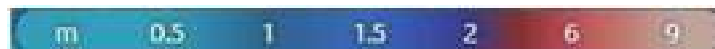
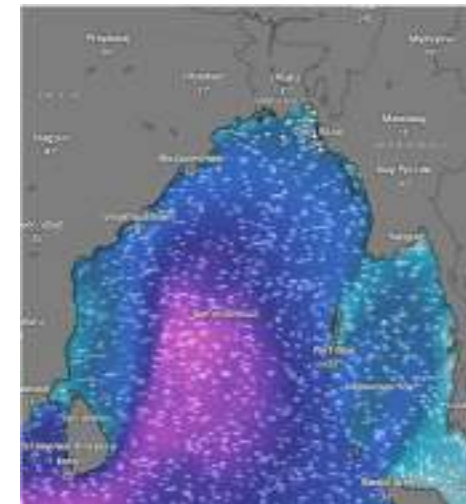
11 May 2026



12 May 2026



13 May 2026



Significant wave height (m)

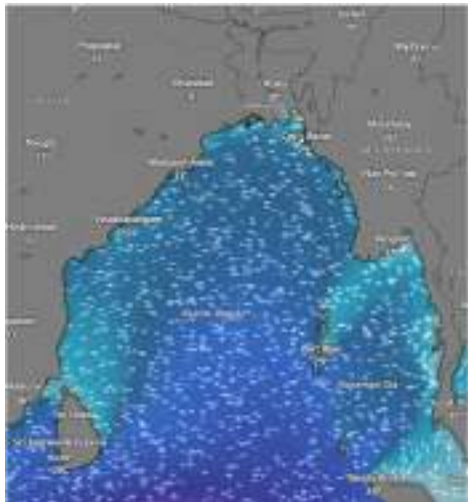


## MARINE WEATHER FORECAST (06 to 13 May 2026) ABEAM TO ST. MARTIN'S LIGHT HOUSE (20° 37' N, 092° 08' E)

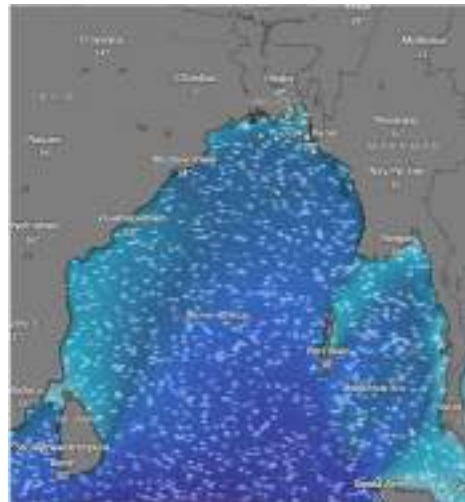


Date	Time	AirTemp (°C)		Sea Surface Temp (°C)	Baro Pressure (mbar)	Wind Direction	Wind Spd (kts)		Wave Ht (m)	Sea State	Humidity (%)	Prob of Rain (%)	Amount of Rain (mm)
		Max	Min				Gusting	Avg					
06-05-26 (Wednesday)	0001	32	27	26	1009	NW	12	08	0.9	3	92	32	0.3
	0600			25	1010	NE	05	03	0.8	3	93	37	0.4
	1200			29	1008	NW	09	05	0.8	3	81	18	0.0
	1800			27	1007	SW	11	07	0.9	3	85	10	0.0
07-05-26 (Thursday)	0001	33	27	26	1010	SW	10	06	0.9	3	92	59	0.6
	0600			25	1011	NNW	09	05	0.9	3	93	43	0.5
	1200			29	1009	SW	09	05	0.9	3	80	15	0.0
	1800			27	1008	W	10	06	0.9	3	87	37	0.4
08-05-26 (Friday)	0001	33	27	26	1010	NW	12	08	0.9	3	90	42	0.4
	0600			25	1011	N	14	10	1.0	3	91	36	0.4
	1200			29	1009	NW	12	08	1.0	3	85	20	0.0
	1800			27	1008	NW	15	11	1.0	3	88	29	0.3
09-05-26 (Saturday)	0001	33	27	26	1009	NW	15	11	1.0	3	90	15	0.0
	0600			25	1010	N	14	10	1.0	3	91	13	0.0
	1200			29	1008	NNW	15	11	1.0	3	69	10	0.0
	1800			27	1007	NW	14	10	1.0	3	77	12	0.0

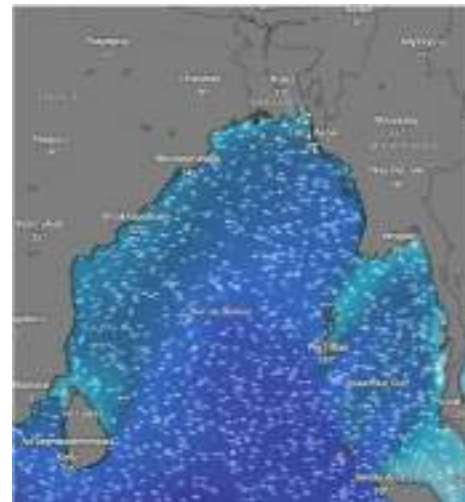
06 May 2026



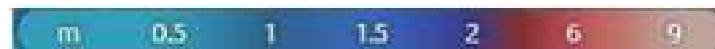
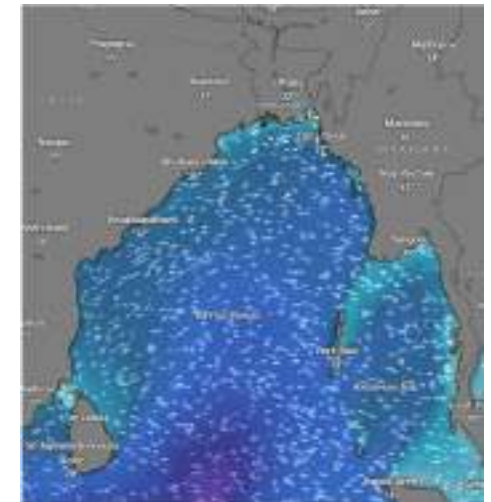
07 May 2026



08 May 2026



09 May 2026



Significant wave height (m)

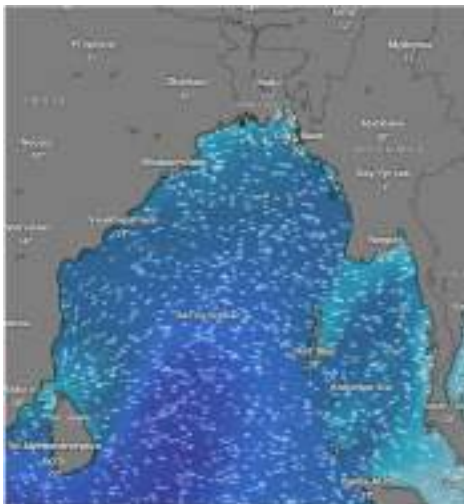


## MARINE WEATHER FORECAST (06 to 13 May 2026) ABEAM TO ST. MARTIN'S LIGHT HOUSE (20° 37' N, 092° 08' E)

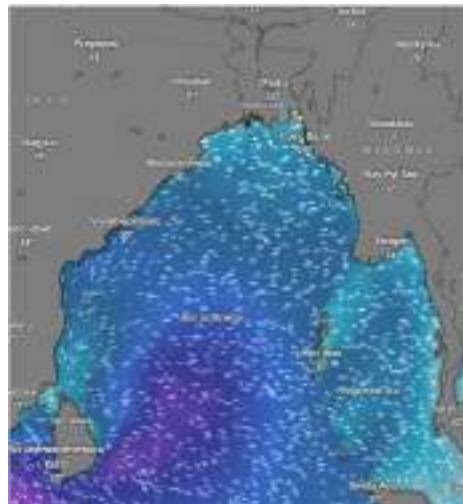


Date	Time	Air Temp (°C)		Sea Surface Temp (°C)	Baro Pressure (mbar)	Wind Direction	Wind Spd (kts)		Wave Ht (m)	Sea State	Humidity (%)	Prob of Rain (%)	Amount of Rain (mm)
		Max	Min				Gusting	Avg					
10-05-26 (Sunday)	0001	32	27	26	1008	NW	13	09	0.9	3	86	20	0.1
	0600			25	1009	N	09	05	0.8	3	89	24	0.1
	1200			29	1007	W	10	06	0.8	3	77	10	0.0
	1800			27	1006	W	09	05	0.8	3	87	20	0.1
11-05-26 (Monday)	0001	32	26	26	1008	W	07	04	0.8	3	88	42	0.4
	0600			25	1009	NE	09	05	0.7	3	91	35	0.3
	1200			29	1007	SSE	10	06	0.7	3	82	24	0.1
	1800			27	1006	SSE	07	04	0.6	3	84	22	0.1
12-05-26 (Tuesday)	0001	32	26	26	1008	SSE	09	05	0.8	3	89	41	0.4
	0600			25	1009	SE	13	09	0.7	3	90	40	0.4
	1200			29	1007	SSE	12	08	0.8	3	77	32	0.3
	1800			27	1006	SSE	11	07	0.8	3	86	24	0.1
13-05-26 (Wednesday)	0001	32	26	26	1008	SSE	09	04	0.6	3	85	35	0.4
	0600			25	1009	SE	10	07	0.7	3	88	30	0.3
	1200			29	1007	SSE	12	08	0.8	3	79	30	0.2
	1800			27	1006	SSE	13	08	0.9	3	87	22	0.1

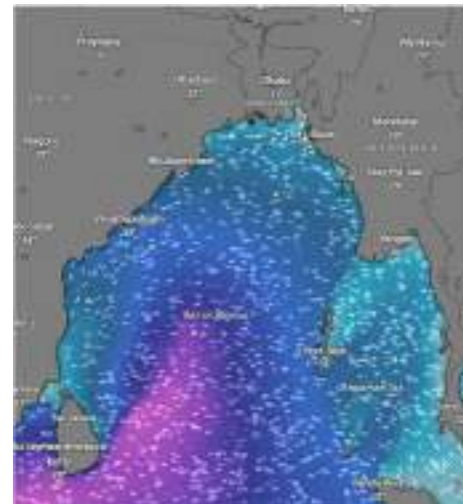
10 May 2026



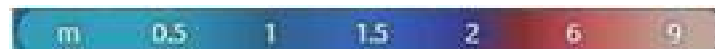
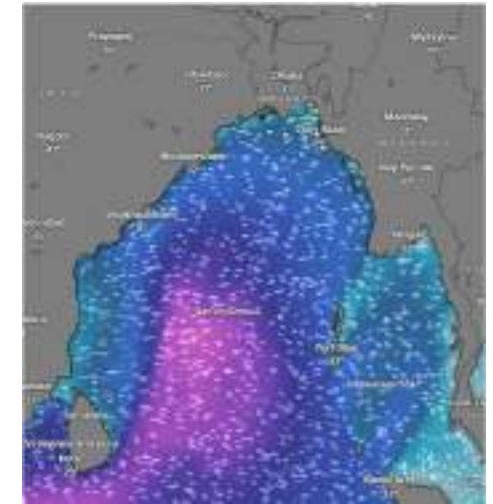
11 May 2026



12 May 2026



13 May 2026



Significant wave height (m)



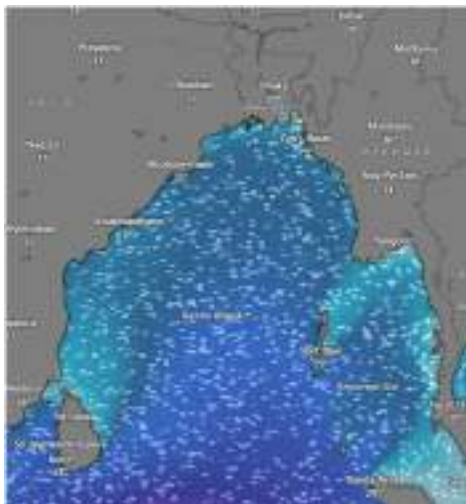
# MARINE WEATHER FORECAST (06 to 13 May 2026)



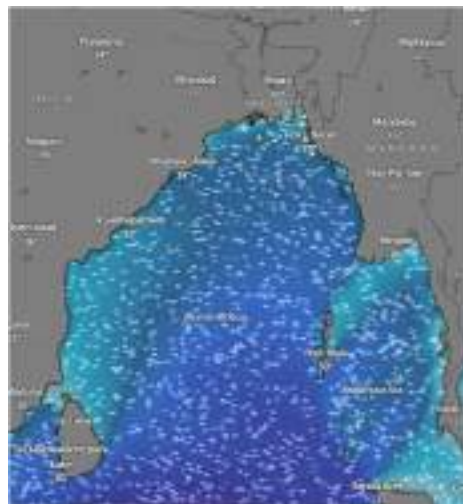
## PAYRA FAIRWAY (21° 22' N, 090° 6' E)

Date	Time	Air Temp (°C)		Sea Surface Temp (°C)	Baro Pressure (mbar)	Wind Direction	Wind Spd (kts)		Wave Ht (m)	Sea State	Humidity (%)	Prob of Rain (%)	Amount of Rain (mm)
		Max	Min				Gusting	Avg					
06-05-26 (Wednesday)	0001	32	27	26	1009	W	07	04	0.9	3	89	22	0.1
	0600			25	1010	SW	10	06	0.9	3	91	24	0.1
	1200			29	1008	SSW	09	05	1.0	3	76	10	0.0
	1800			27	1007	SSW	09	05	0.9	3	81	22	0.1
07-05-26 (Thursday)	0001	33	27	26	1010	SW	15	11	1.0	3	90	20	0.1
	0600			25	1011	W	07	04	1.0	3	91	24	0.1
	1200			29	1009	SW	05	03	0.9	3	79	12	0.0
	1800			27	1008	SW	09	05	0.9	3	82	16	0.0
08-05-26 (Friday)	0001	33	27	26	1010	SSW	10	06	0.9	3	89	12	0.0
	0600			25	1011	W	07	04	0.9	3	91	20	0.1
	1200			29	1009	W	05	03	0.9	3	74	09	0.0
	1800			27	1008	NNW	09	05	0.9	3	80	22	0.1
09-05-26 (Saturday)	0001	33	27	26	1009	NW	10	06	0.9	3	90	20	0.0
	0600			25	1010	NW	09	05	0.9	3	91	13	0.0
	1200			29	1008	NNW	09	05	0.9	3	69	10	0.0
	1800			27	1007	W	10	06	0.9	3	77	12	0.0

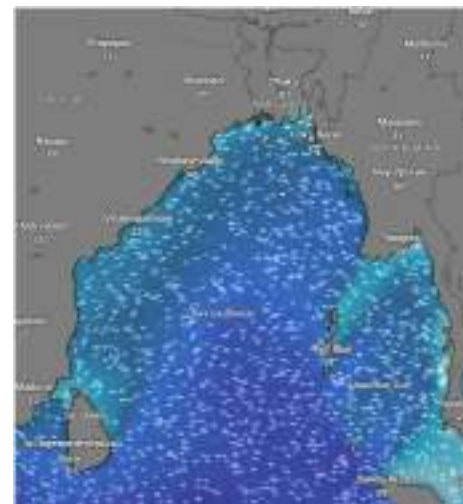
06 May 2026



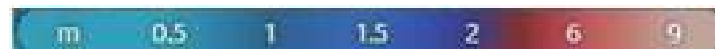
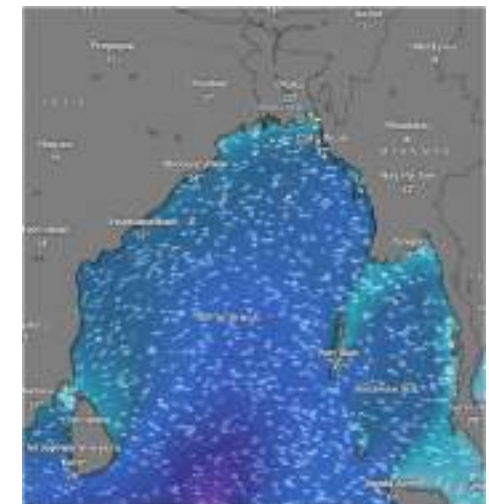
07 May 2026



08 May 2026



09 May 2026



Significant wave height (m)



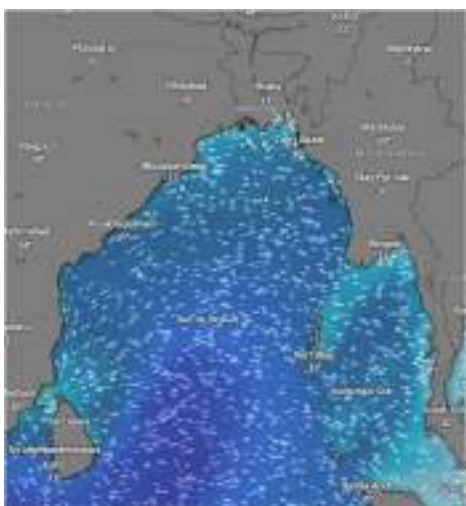
# MARINE WEATHER FORECAST (06 to 13 May 2026)



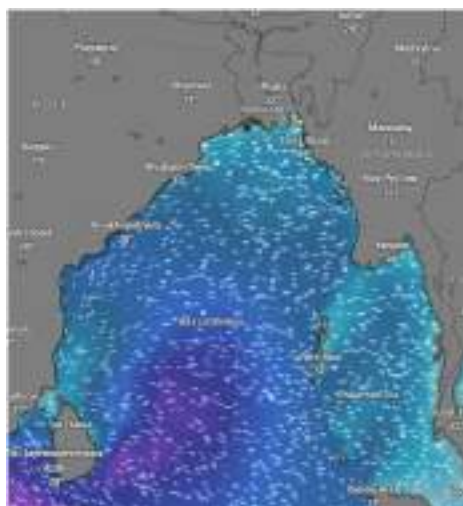
## PAYRA FAIRWAY (21° 22' N, 090° 6' E)

Date	Time	Air Temp (°C)		Sea Surface Temp (°C)	Baro Pressure (mbar)	Wind Direction	Wind Spd (kts)		Wae Ht (m)	Sea State	Humidity (%)	Prob of Rain (%)	Amount of Rain (mm)
		Max	Min				Gusting	Avg					
10-05-26 (Sunday)	0001	32	27	26	1008	NW	12	08	0.9	3	86	20	0.1
	0600			25	1009	NNW	09	05	0.8	3	89	24	0.1
	1200			29	1007	NNW	10	06	0.8	3	77	10	0.0
	1800			27	1006	W	11	07	0.9	3	87	20	0.1
11-05-26 (Monday)	0001	32	26	26	1008	SW	09	05	0.7	3	88	42	0.4
	0600			25	1009	W	07	04	0.7	3	91	35	0.3
	1200			29	1007	SSE	11	07	0.6	3	82	24	0.1
	1800			27	1006	SSE	10	06	0.6	3	84	22	0.1
12-05-26 (Tuesday)	0001	32	26	26	1008	SSW	07	04	0.6	3	89	41	0.4
	0600			25	1009	SE	09	05	0.7	3	90	40	0.4
	1200			29	1007	S	14	10	0.8	3	77	32	0.3
	1800			27	1006	S	12	08	0.9	3	86	24	0.1
13-05-26 (Wednesday)	0001	32	26	26	1008	SSW	12	09	0.7	3	90	40	0.3
	0600			25	1009	SE	12	05	0.8	3	91	36	0.3
	1200			29	1007	S	10	06	0.9	3	79	30	0.2
	1800			27	1006	SE	11	08	1.0	3	87	25	0.1

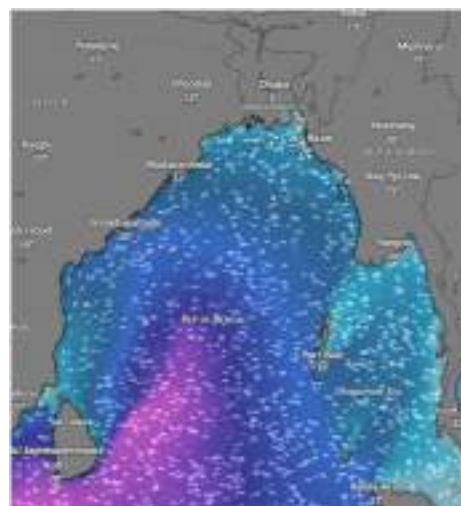
10 May 2026



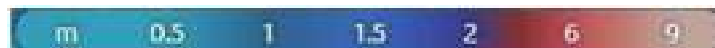
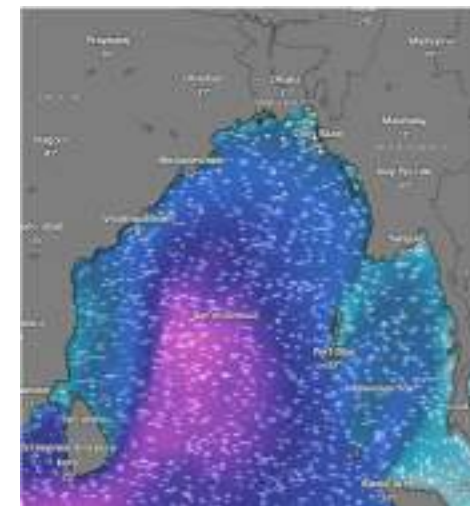
11 May 2026



12 May 2026



13 May 2026



Significant wave height (m)



# MARINE WEATHER FORECAST (06 to 13 May 2026)

## MONGLA FAIRWAY (21° 26' N, 089° 34' E)



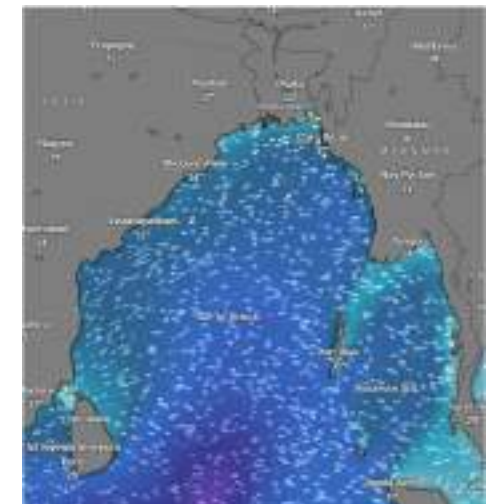
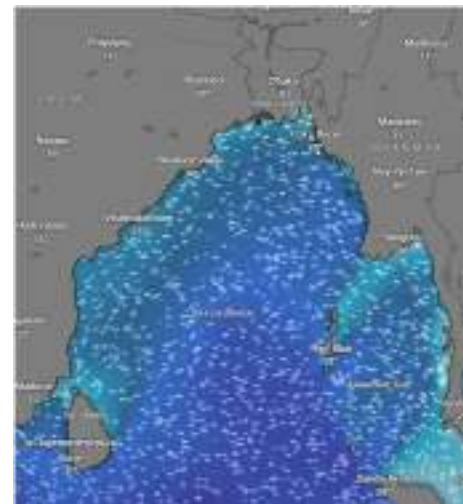
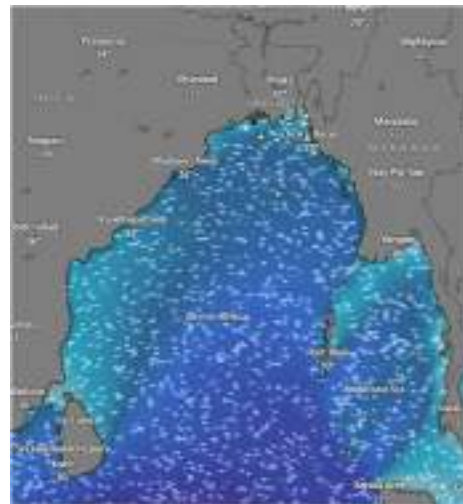
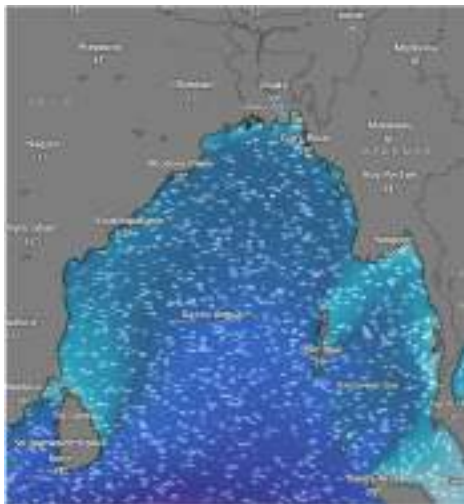
Date	Time	Air Temp (°C)		Sea Surface Temp (°C)	Baro Pressure (mbar)	Wind Direction	Wind Spd (kts)		Wave Ht (m)	Sea State	Humidity (%)	Prob of Rain (%)	Amount of Rain (mm)
		Max	Min				Gusting	Avg					
06-05-26 (Wednesday)	0001	32	27	26	1009	SSE	12	08	1.0	3	92	32	0.3
	0600			25	1010	SW	09	05	1.0	3	93	37	0.4
	1200			29	1008	SSW	10	06	0.9	3	81	18	0.0
	1800			27	1007	SSW	14	04	0.9	3	85	10	0.0
07-05-26 (Thursday)	0001	33	27	26	1010	SW	16	12	0.9	3	92	59	0.6
	0600			25	1011	SW	10	06	1.1	3	93	43	0.5
	1200			29	1009	SW	09	05	1.0	3	80	15	0.0
	1800			27	1008	SSW	11	07	1.0	3	87	37	0.4
08-05-26 (Friday)	0001	33	27	26	1010	S	13	09	1.0	3	90	53	0.5
	0600			25	1011	NNW	12	08	1.0	3	94	45	0.5
	1200			29	1009	SW	09	05	1.0	3	85	21	0.1
	1800			27	1008	SW	11	07	1.1	3	88	34	0.3
09-05-26 (Saturday)	0001	33	27	26	1009	NW	10	05	0.9	3	86	53	0.5
	0600			25	1010	W	11	06	0.9	3	90	45	0.5
	1200			29	1008	W	07	04	0.9	3	84	21	0.1
	1800			27	1007	SSW	09	05	0.9	3	87	34	0.3

06 May 2026

07 May 2026

08 May 2026

09 May 2026



Significant wave height (m)



# MARINE WEATHER FORECAST (06 to 13 May 2026)

## MONGLA FAIRWAY (21° 26' N, 089° 34' E)



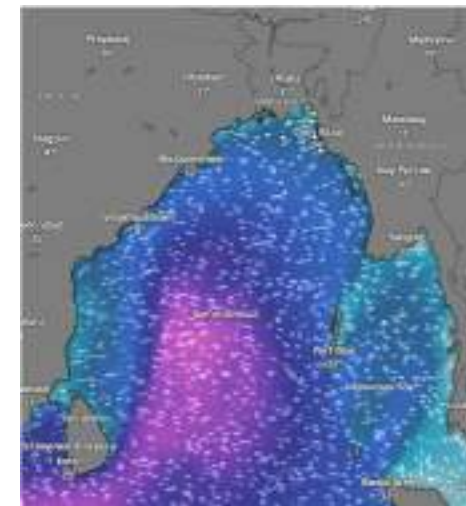
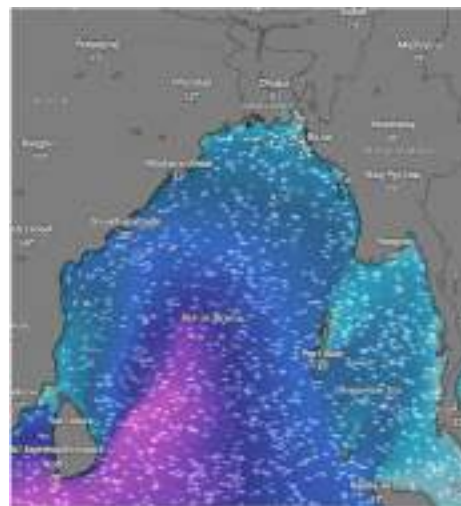
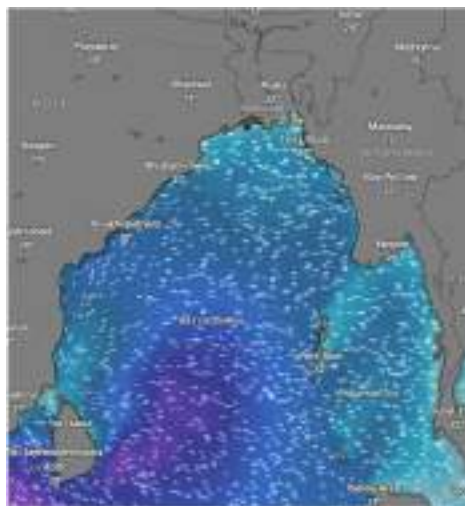
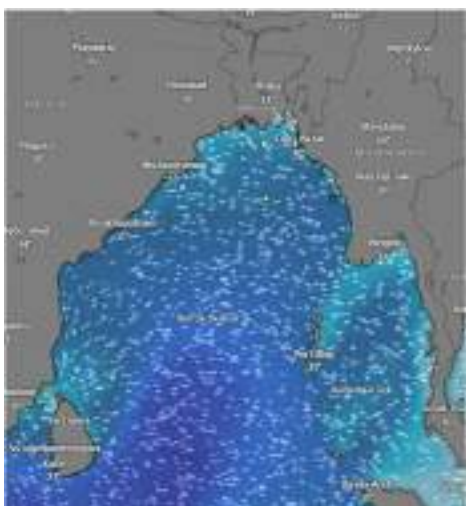
Date	Time	Air Temp (°C)		Sea Surface Temp (°C)	Baro Pressure (mbar)	Wind Direction	Wind Spd (kts)		Wave Ht (m)	Sea State	Humidity (%)	Prob of Rain (%)	Amount of Rain (mm)
		Max	Min				Gusting	Avg					
10-05-26 (Sunday)	0001	32	27	26	1008	SW	10	06	0.9	3	86	53	0.5
	0600			25	1009	W	09	05	0.8	3	90	45	0.5
	1200			29	1007	N	07	04	0.8	3	84	21	0.1
	1800			27	1006	SW	12	08	0.8	3	87	34	0.3
11-05-26 (Monday)	0001	32	26	26	1008	SSW	10	06	0.7	3	86	53	0.5
	0600			25	1009	SW	09	05	0.7	3	90	45	0.5
	1200			29	1007	SSE	13	09	0.7	3	84	21	0.1
	1800			27	1006	SE	13	09	0.7	3	87	34	0.3
12-05-26 (Tuesday)	0001	32	26	26	1008	S	10	06	0.7	3	86	53	0.5
	0600			25	1009	SSE	11	07	0.8	3	90	45	0.5
	1200			29	1007	SSE	18	14	0.9	3	84	21	0.1
	1800			27	1006	S	14	10	0.9	3	87	34	0.3
13-05-26 (Wednesday)	0001	32	26	26	1008	S	13	10	0.8	3	87	51	0.4
	0600			25	1009	SSE	10	06	0.9	3	89	41	0.4
	1200			29	1007	SSE	11	07	1.0	3	86	22	0.1
	1800			27	1006	SE	12	10	1.1	3	88	32	0.2

10 May 2026

11 May 2026

12 May 2026

13 May 2026



Significant wave height (m)



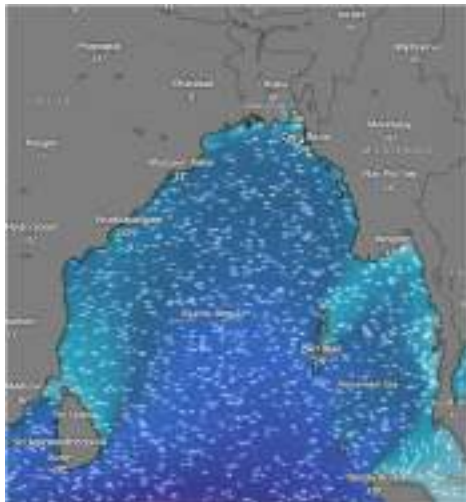
# MARINE WEATHER FORECAST (06 to 13 May 2026)

## OUTER EEZ (18° 48' N, 090° 30' E)

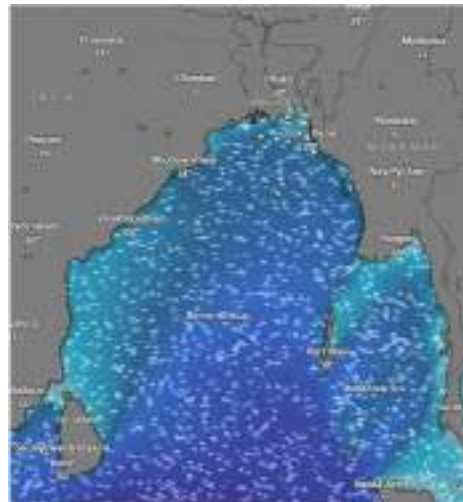


Date	Time	Air Temp (°C)		Sea Surface Temp (°C)	Baro Pressure (mbar)	Wind Direction	Wind Spd (kts)		Wave Ht (m)	Sea State	Humidity (%)	Prob of Rain (%)	Amount of Rain (mm)
		Max	Min				Gusting	Avg					
06-05-26 (Wednesday)	0001	32	27	26	1009	SW	11	07	1.1	3	89	12	0.0
	0600			25	1010	S	12	08	1.1	3	90	24	0.1
	1200			29	1008	SSW	12	08	1.0	3	74	10	0.0
	1800			27	1007	SSW	10	06	1.0	3	87	20	0.0
07-05-26 (Thursday)	0001	33	27	26	1010	SW	11	07	1.1	3	90	12	0.0
	0600			25	1011	W	14	10	1.0	3	93	24	0.1
	1200			29	1009	NNW	09	05	1.1	3	82	10	0.0
	1800			27	1008	SW	07	04	1.0	3	87	20	0.0
08-05-26 (Friday)	0001	33	27	26	1010	SW	05	03	1.1	3	90	12	0.0
	0600			25	1011	W	07	04	1.0	3	93	24	0.1
	1200			29	1009	NNW	10	06	1.1	3	82	10	0.0
	1800			27	1008	SW	07	04	1.0	3	87	20	0.0
09-05-26 (Saturday)	0001	33	27	26	1009	SW	09	05	1.1	3	90	36	0.4
	0600			25	1010	W	12	08	1.1	3	92	41	0.4
	1200			29	1008	W	10	06	1.1	3	85	22	0.0
	1800			27	1007	W	11	07	1.1	3	89	24	0.1

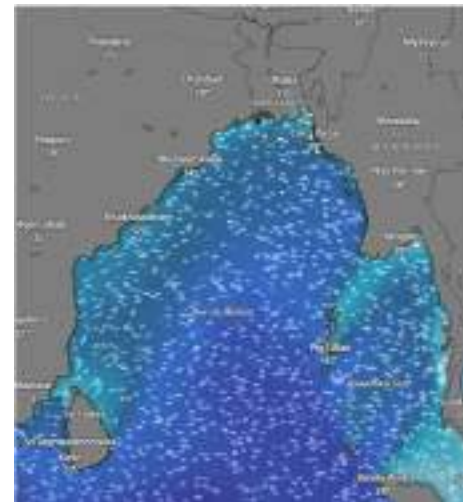
06 May 2026



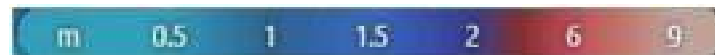
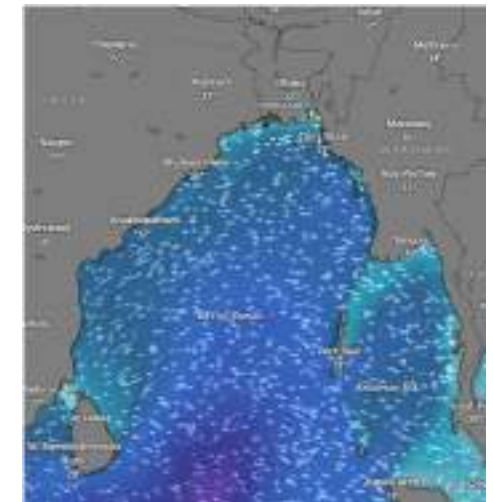
07 May 2026



08 May 2026



09 May 2026



Significant wave height (m)



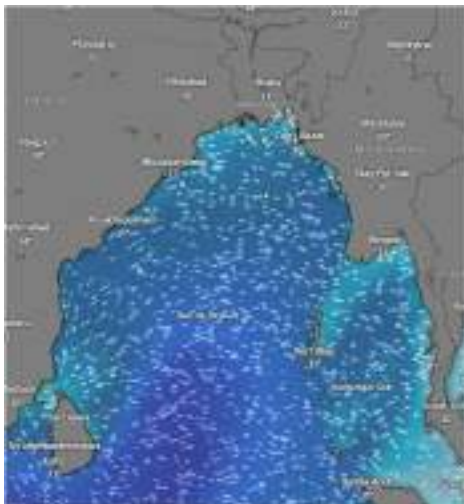
# MARINE WEATHER FORECAST (06 to 13 May 2026)

## OUTER EEZ (18° 48' N, 090° 30' E)

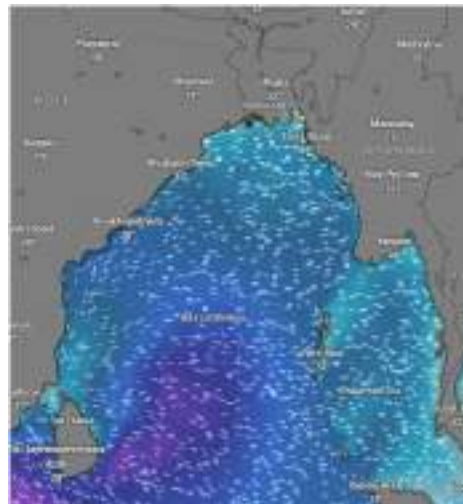


Date	Time	Air Temp (°C)		Sea Surface Temp (°C)	Baro Pressure (mbar)	Wind Direction	Wind Spd (kts)		Wave Ht (m)	Sea State	Humidity (%)	Prob of Rain (%)	Amount of Rain (mm)
		Max	Min				Gusting	Avg					
10-05-26 (Sunday)	0001	32	27	26	1008	NNW	16	12	1.0	3	90	36	0.4
	0600			25	1009	NNE	10	06	1.0	3	92	41	0.4
	1200			29	1007	NNE	11	07	0.9	3	85	22	0.0
	1800			27	1006	NW	09	05	0.8	3	89	24	0.1
11-05-26 (Monday)	0001	32	26	26	1008	SSW	09	05	0.8	3	90	36	0.4
	0600			25	1009	SSE	07	04	0.8	3	92	41	0.4
	1200			29	1007	SSE	14	10	0.8	3	85	22	0.0
	1800			27	1006	SSE	12	08	0.8	3	89	24	0.1
12-05-26 (Tuesday)	0001	32	26	26	1008	SSE	11	07	0.9	3	90	36	0.4
	0600			25	1009	SSW	09	05	0.9	3	92	41	0.4
	1200			29	1007	W	07	04	1.0	3	85	22	0.0
	1800			27	1006	SSE	11	07	1.2	3	89	24	0.1
13-05-26 (Wednesday)	0001	32	26	26	1008	SSE	10	06	1.0	3	87	24	0.1
	0600			25	1009	S	09	04	1.2	3	89	29	0.2
	1200			29	1007	SSE	10	06	1.4	4	81	35	0.4
	1800			27	1006	SSE	11	08	1.5	4	84	35	0.4

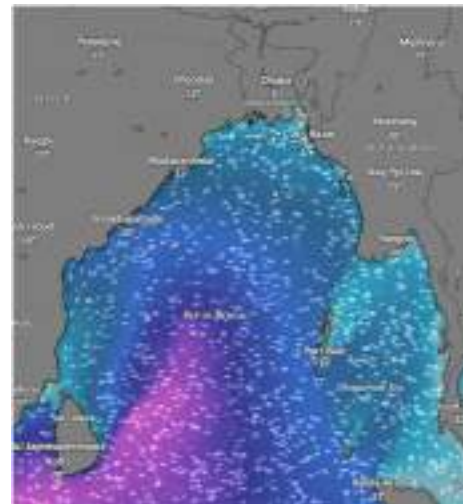
10 May 2026



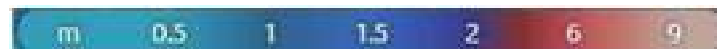
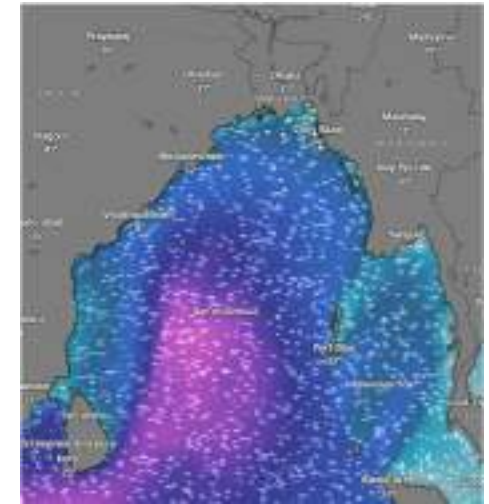
11 May 2026



12 May 2026



13 May 2026



Significant wave height (m)



## PREDICTED SURFACE PRESSURE FORECAST (06 to 12 May 2026)



06 May 2026



07 May 2026



08 May 2026



09 May 2026



10 May 2026



11 May 2026



12 May 2026

