

**MARINE WEATHER FORECAST- NEAR AUTHORITY BUOY (Lat 22° 12' N, Long 091° 38' E)**

**DATE : 06 to 13 May 2023**

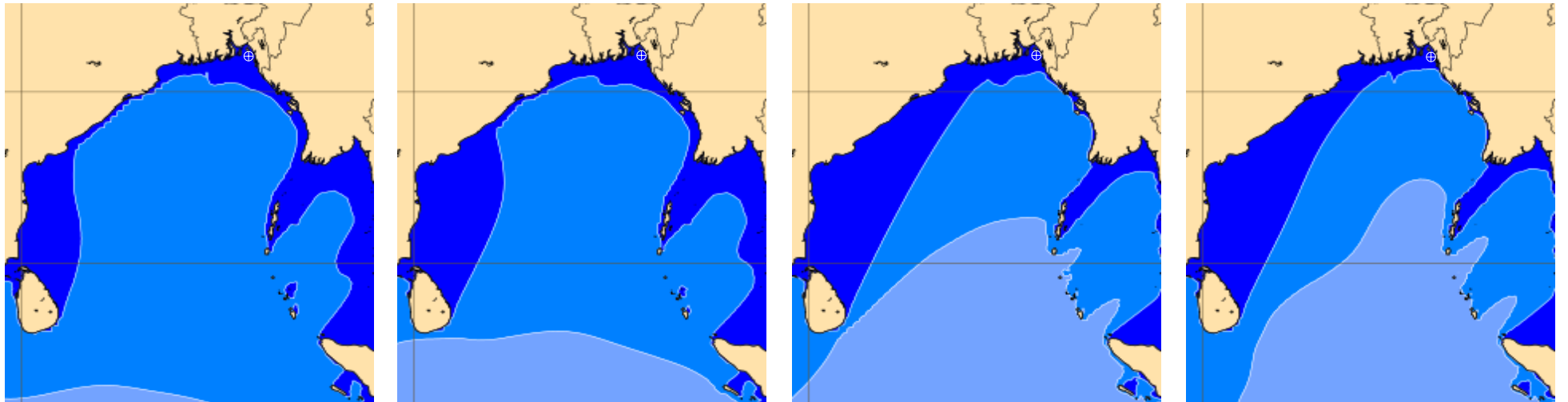
Date	Time	Max Wind Spd (kts)	Wind Direction	Wave Ht (m)	Sea State	Baro Pressure	Air Temp		Sea Surface Temp	Prob of Rain (%)	Sea State	Wave Ht (m)
							Max	Min				
06-05-23	0001	5	SSW	0.2	2	1005	33	28	29	5% (0.0 mm)	0	0
	0600	3	SSE	0.1	1	1006			28	18% (0.0 mm)	1	0 - 0.1
	1200	7	WSW	0.1	1	1006			29	3% (0.0 mm)	2	0.1 - 0.5
	1800	13	WSW	0.4	2	1002			30	3% (0.0 mm)	3	0.5 - 1.25
07-05-23	0001	3	SE	0.2	2	1003	35	27	29	16% (0.0 mm)	4	1.25 - 2.5
	0600	2	SE	0.1	1	1005			27	24% (0.0 mm)	5	2.5 - 4.0
	1200	7	SW	0.1	1	1005			29	2% (0.0 mm)	6	4.0 - 6.0
	1800	16	WSW	0.4	2	1001			30	5% (0.0 mm)	7	6.0 - 9.0
08-05-23	0001	6	SSE	0.2	2	1002	36	28	29	4% (0.0 mm)	8	9.0 - 14.0
	0600	5	S	0.1	1	1004			28	9% (0.0 mm)	9	Over 14.0
	1200	7	WSW	0.1	1	1004			29	5% (0.0 mm)		
	1800	19	W	0.4	2	1000			30	4% (0.0 mm)		
09-05-23	0001	10	SSE	0.2	2	1003	36	28	28	5% (0.0 mm)		
	0600	11	S	0.3	2	1005			29	9% (0.0 mm)		
	1200	10	SW	0.3	2	1005			29	5% (0.0 mm)		
	1800	16	WSW	0.4	2	1001			29	4% (0.0 mm)		

**06 May 23 Sat (Probability 98%)**

**07 May 23 Sun (Probability 95%)**

**08 May 23 Mon (Probability 90%)**

**09 May 23 Tue (Probability 80%)**



Significant wave height (m)

**MARINE WEATHER FORECAST- NEAR AUTHORITY BUOY (Lat 22° 12'N, Long 091° 38'E)**

**DATE : 06 to 13 May 2023**

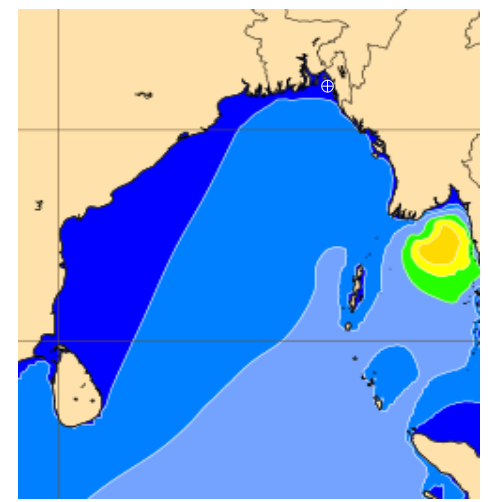
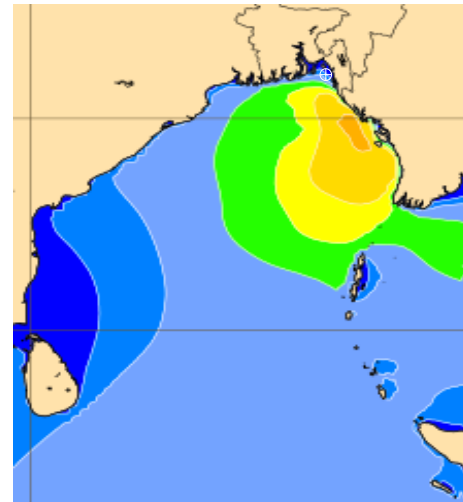
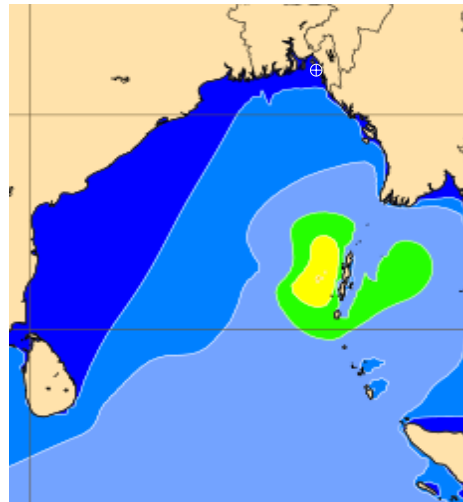
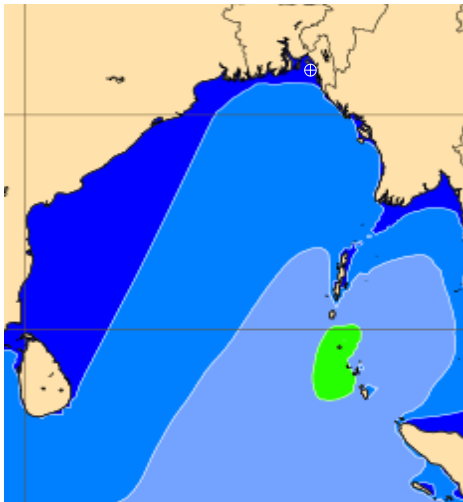
Date	Time	Max Wind Spd (kts)	Wind Direction	Wave Ht (m)	Sea State	Baro Pressure	Air Temp		Sea Surface Temp	Prob of Rain (%)	Sea State	Wave Ht (m)
							Max	Min				
10-05-23	0001	14	SSE	0.4	2	1004	35	28	28	6% (0.0 mm)	0	0
	0600	13	SSE	0.3	2	1004			29	9% (0.0 mm)	1	0 - 0.1
	1200	9	WSW	0.2	2	1005			29	5% (0.0 mm)	2	0.1 - 0.5
	1800	16	WSW	0.4	2	1001			29	4% (0.0 mm)	3	0.5 - 1.25
11-05-23	0001	15	SSE	0.4	2	1003	34	27	28	7% (0.0 mm)	4	1.25 - 2.5
	0600	5	SSW	0.2	2	1004			28	8% (0.0 mm)	5	2.5 - 4.0
	1200	9	W	0.1	1	1003			29	5% (0.0 mm)	6	4.0 - 6.0
	1800	20	W	0.5	2	999			30	4% (0.0 mm)	7	6.0 - 9.0
12-05-23	0001	12	SSE	0.3	2	1002	35	28	29	24% (0.0 mm)	8	9.0 - 14.0
	0600	4	SSW	0.2	2	1002			28	31% (0.2 mm)	9	Over 14.0
	1200	10	WNW	0.1	1	1001			29	32% (0.2 mm)		
	1800	17	SSW	0.4	2	998			30	8% (0.0 mm)		
13-05-23	0001	4	ESE	0.2	2	1000	35	28	29	24% (0.0 mm)		
	0600	5	E	0.1	1	998			29	16% (0.0 mm)		
	1200	18	NNE	0.1	1	996			31	24% (0.0 mm)		
	1800	25	NNE	0.5	2	991			33	31% (0.2 mm)		

**10 May 23 Wed (Probability 70%)**

**11 May 23 Thu (Probability 60%)**

**12 May 23 Fri (Probability 50%)**

**13 May 23 Sat (Probability 50%)**



Significant wave height (m)

# MARINE WEATHER FORECAST- 20 NM WEST OF ELEPHANT POINT (Lat 21° 10' N, Long 091° 42' E)

**DATE : 06 to 13 May 2023**

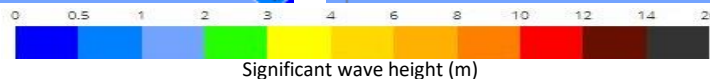
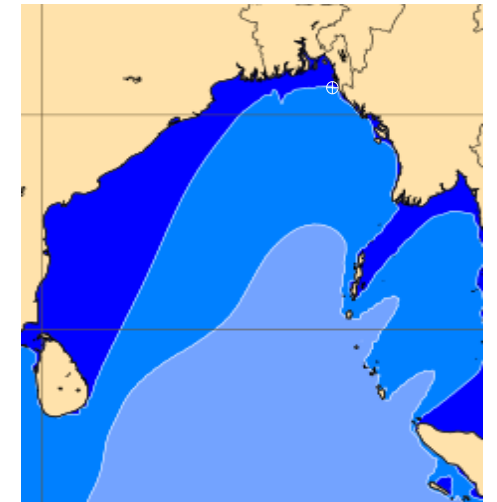
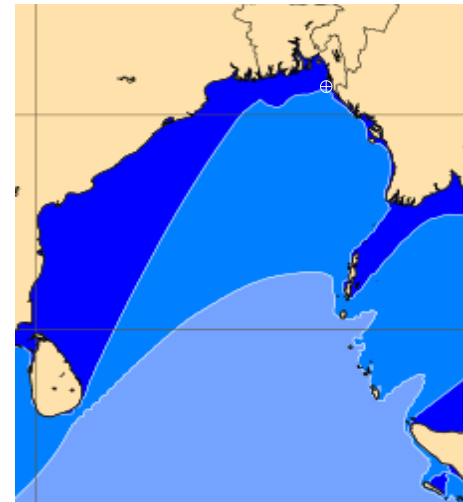
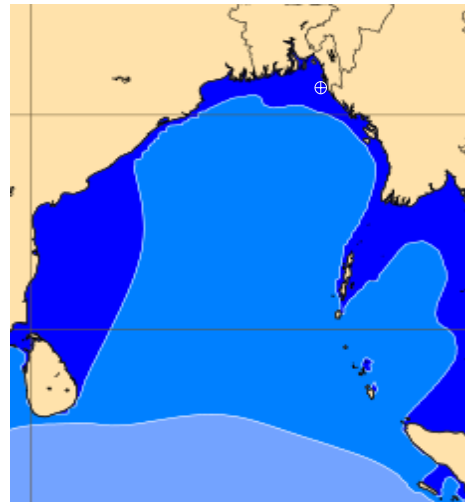
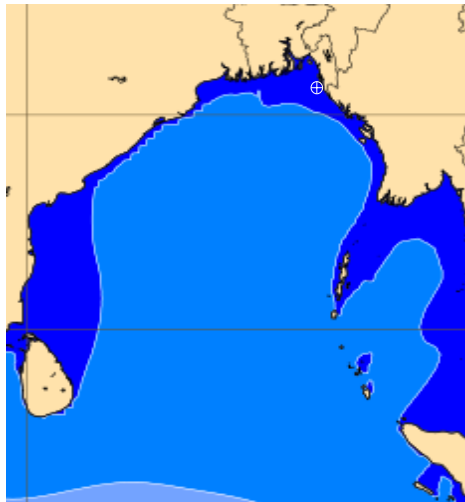
Date	Time	Max Wind Spd (kts)	Wind Direction	Wave Ht (m)	Sea State	Baro Pressure	Air Temp		Sea Surface Temp	Prob of Rain (%)	Sea State	Wave Ht (m)
							Max	Min				
06-05-23	0001	8	WNW	0.6	3	1005	31	28	29	2% (0.0 mm)	0	0
	0600	7	W	0.6	3	1006			29	15% (0.0 mm)	1	0 - 0.1
	1200	6	W	0.7	3	1006			29	16% (0.0 mm)	2	0.1 - 0.5
	1800	15	W	0.8	3	1003			30	4% (0.0 mm)	3	0.5 - 1.25
07-05-23	0001	8	W	0.9	3	1003	33	27	29	14% (0.0 mm)	4	1.25 - 2.5
	0600	6	NW	0.8	3	1005			29	22% (0.0 mm)	5	2.5 - 4.0
	1200	7	WNW	0.9	3	1005			30	4% (0.0 mm)	6	4.0 - 6.0
	1800	16	W	1.0	3	1001			30	2% (0.0 mm)	7	6.0 - 9.0
08-05-23	0001	11	W	1.1	3	1002	34	28	29	7% (0.0 mm)	8	9.0 - 14.0
	0600	5	WNW	1.1	3	1003			29	8% (0.0 mm)	9	Over 14.0
	1200	7	WNW	1.1	3	1004			30	3% (0.0 mm)		
	1800	21	W	1.4	4	1000			30	2% (0.0 mm)		
09-05-23	0001	7	SSE	1.2	3	1003	34	28	29	8% (0.0 mm)		
	0600	7	SW	1.1	3	1005			29	3% (0.0 mm)		
	1200	6	WSW	1.1	3	1005			30	2% (0.0 mm)		
	1800	18	WSW	1.4	4	1001			30	8% (0.0 mm)		

**06 May 23 Sat (Probability 98%)**

**07 May 23 Sun (Probability 95%)**

**08 May 23 Mon (Probability 90%)**

**09 May 23 Tue (Probability 80%)**



Significant wave height (m)

# MARINE WEATHER FORECAST- 20 NM WEST OF ELEPHANT POINT (Lat 21° 10' N, Long 091° 42' E)

**DATE : 06 to 13 May 2023**

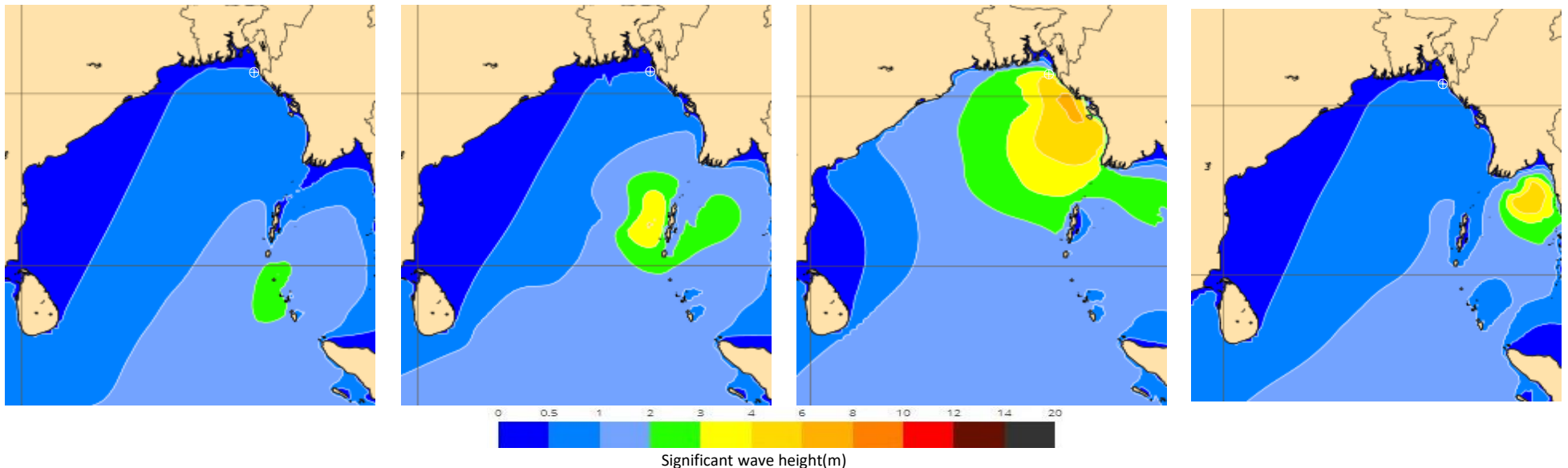
Date	Time	Max Wind Spd (kts)	Wind Direction	Wave Ht (m)	Sea State	Baro Pressure	Air Temp		Sea Surface Temp	Prob of Rain (%)	Sea State	Wave Ht (m)
							Max	Min				
10-05-23	0001	15	SSE	1.3	4	1004	33	28	29	7% (0.0 mm)	0	0
	0600	7	S	1.4	4	1005			30	14% (0.0 mm)	1	0 - 0.1
	1200	7	SSW	1.4	4	1005			29	24% (0.0 mm)	2	0.1 - 0.5
	1800	16	W	1.5	4	1001			29	4% (0.0 mm)	3	0.5 - 1.25
11-05-23	0001	9	S	1.3	4	1003	32	27	29	2% (0.0 mm)	4	1.25 - 2.5
	0600	6	W	1.2	3	1004			29	15% (0.0 mm)	5	2.5 - 4.0
	1200	4	WSW	1.1	3	1004			29	19% (0.0 mm)	6	4.0 - 6.0
	1800	13	S	1.1	3	1002			30	34% (0.2 mm)	7	6.0 - 9.0
12-05-23	0001	7	SE	1.3	4	1002	33	27	29	39% (0.3 mm)	8	9.0 - 14.0
	0600	11	NE	1.8	4	1001			29	46% (0.4 mm)	9	Over 14.0
	1200	4	N	2.1	4	1001			29	48% (0.4 mm)		
	1800	10	SSE	2.7	5	999			30	52% (0.4 mm)		
13-05-23	0001	19	E	3.2	5	999	34	28	29	24% (0.0 mm)		
	0600	11	N	3.3	5	998			27	24% (0.0 mm)		
	1200	29	N	3.2	5	993			30	28% (0.2 mm)		
	1800	24	NNW	2.3	4	994			28	22% (0.0 mm)		

**10 May 23 Wed (Probability 70%)**

**11 May 23 Thu (Probability 60%)**

**12 May 23 Fri (Probability 50%)**

**13 May 23 Sat (Probability 50%)**



# MARINE WEATHER FORECAST- 15 NM WEST OF ST. MARTIN'S LIGHT HOUSE (Lat 20° 37'N, Long 092° 03'E)

**DATE : 06 to 13 May 2023**

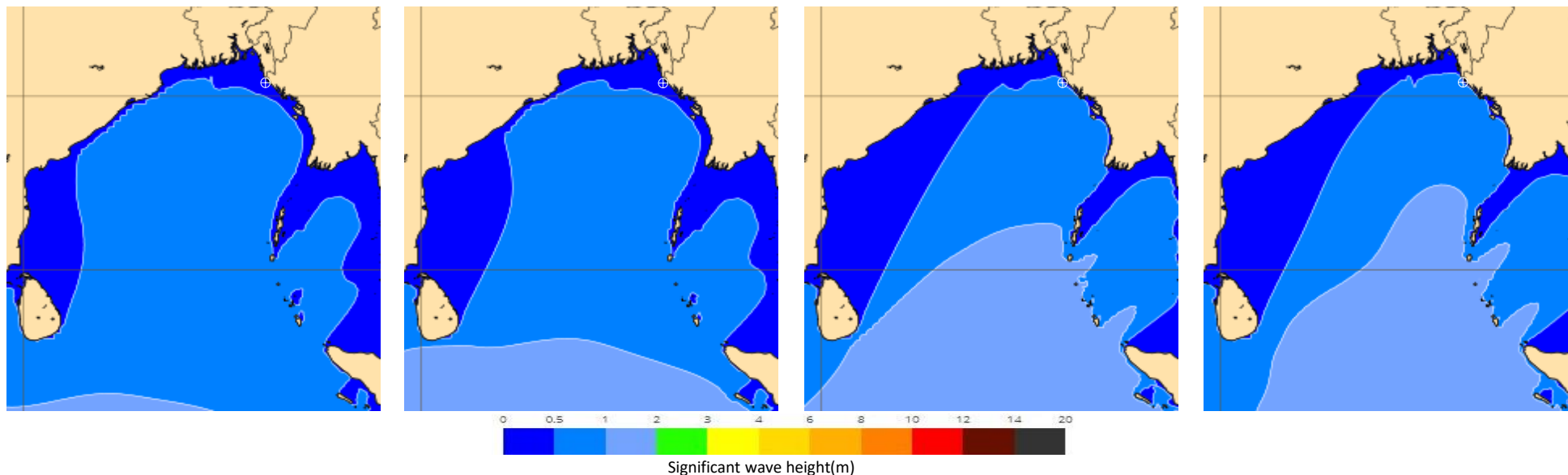
Date	Time	Max Wind Spd (kts)	Wind Direction	Wave Ht (m)	Sea State	Baro Pressure	Air Temp		Sea Surface Temp	Prob of Rain (%)	Sea State	Wave Ht (m)
							Max	Min				
06-05-23	0001	11	WNW	0.8	3	1006	32	28	29	2% (0.0 mm)	0	0
	0600	8	WNW	0.7	3	1005			29	22% (0.0 mm)	1	0 - 0.1
	1200	9	NW	0.7	3	1007			29	6% (0.0 mm)	2	0.1 - 0.5
	1800	19	W	1.1	3	1002			30	4% (0.0 mm)	3	0.5 - 1.25
07-05-23	0001	16	WNW	1.2	3	1004	34	27	29	7% (0.0 mm)	4	1.25 - 2.5
	0600	8	NW	1.0	3	1004			29	14% (0.0 mm)	5	2.5 - 4.0
	1200	10	NW	1.0	3	1006			30	6% (0.0 mm)	6	4.0 - 6.0
	1800	21	WNW	1.3	4	1001			30	4% (0.0 mm)	7	6.0 - 9.0
08-05-23	0001	16	W	1.4	4	1003	34	28	29	8% (0.0 mm)	8	9.0 - 14.0
	0600	6	WNW	1.4	4	1003			29	10% (0.0 mm)	9	Over 14.0
	1200	9	NW	1.3	4	1005			30	2% (0.0 mm)		
	1800	22	W	1.6	4	1000			30	2% (0.0 mm)		
09-05-23	0001	7	SW	1.5	4	1003	34	28	29	9% (0.0 mm)		
	0600	5	SSW	1.3	4	1003			29	7% (0.0 mm)		
	1200	4	WNW	1.3	4	1005			30	3% (0.0 mm)		
	1800	21	WSW	1.6	4	1000			30	2% (0.0 mm)		

**06 May 23 Sat (Probability 98%)**

**07 May 23 Sun (Probability 95%)**

**08 May 23 Mon (Probability 90%)**

**09 May 23 Tue (Probability 80%)**



# MARINE WEATHER FORECAST- 15 NM WEST OF ST. MARTIN'S LIGHT HOUSE (Lat 20° 37'N, Long 092° 03'E)

**DATE : 06 to 13 May 2023**

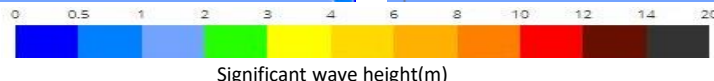
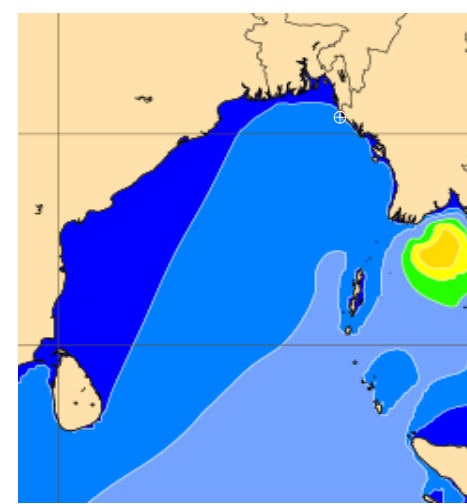
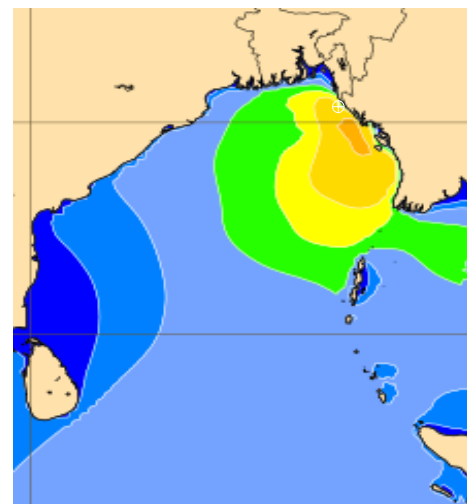
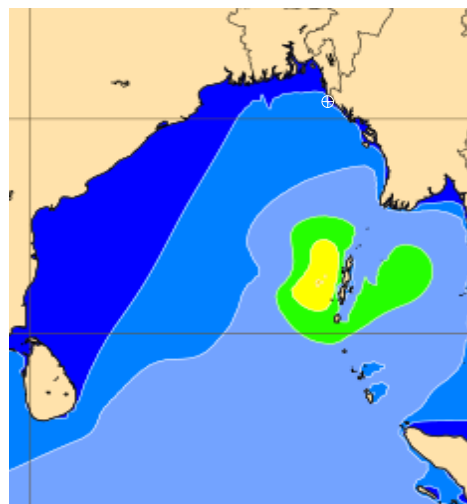
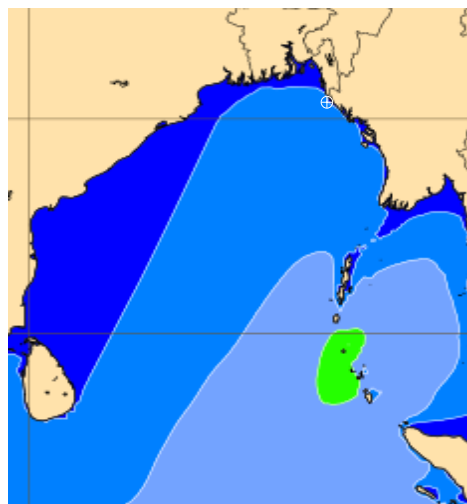
Date	Time	Max Wind Spd (kts)	Wind Direction	Wave Ht (m)	Sea State	Baro Pressure	Air Temp		Sea Surface Temp	Prob of Rain (%)	Sea State	Wave Ht (m)
							Max	Min				
10-05-23	0001	10	SSE	1.6	4	1004	33	28	29	7% (0.0 mm)	0	0
	0600	5	SSW	1.7	4	1004			29	14% (0.0 mm)	1	0 - 0.1
	1200	3	S	1.8	4	1006			30	8% (0.0 mm)	2	0.1 - 0.5
	1800	12	WSW	1.8	4	1002			30	9% (0.0 mm)	3	0.5 - 1.25
11-05-23	0001	2	SSE	1.7	4	1005	33	28	29	11% (0.0 mm)	4	1.25 - 2.5
	0600	7	SSE	1.5	4	1002			29	12% (0.0 mm)	5	2.5 - 4.0
	1200	4	NNW	1.4	4	1005			29	4% (0.0 mm)	6	4.0 - 6.0
	1800	12	W	1.4	4	1000			30	12% (0.0 mm)	7	6.0 - 9.0
12-05-23	0001	2	NNE	1.8	4	1002	33	28	30	39% (0.3 mm)	8	9.0 - 14.0
	0600	19	ESE	2.6	5	1000			29	36% (0.0 mm)	9	Over 14.0
	1200	24	E	3.4	5	1002			29	40% (0.3 mm)		
	1800	26	ESE	4.1	6	999			29	43% (0.3 mm)		
13-05-23	0001	26	ENE	4.7	6	1000	32	28	29	40% (0.4mm)		
	0600	34	NE	5.4	6	995			28	40% (0.4 mm)		
	1200	49	NNE	6.3	7	993			27	60% (0.5 mm)		
	1800	59	NW	5.3	6	985			27	56% (0.4 mm)		

**10 May 23 Wed (Probability 70%)**

**11 May 23 Thu (Probability 60%)**

**12 May 23 Fri (Probability 50%)**

**13 May 23 Sat (Probability 50%)**



Significant wave height(m)

# MARINE WEATHER FORECAST- 40 NM ESE OF PAYRA FAIRWAY (Lat 21° 07'N, Long 090° 45' E)

**DATE : 06 to 13 May 2023**

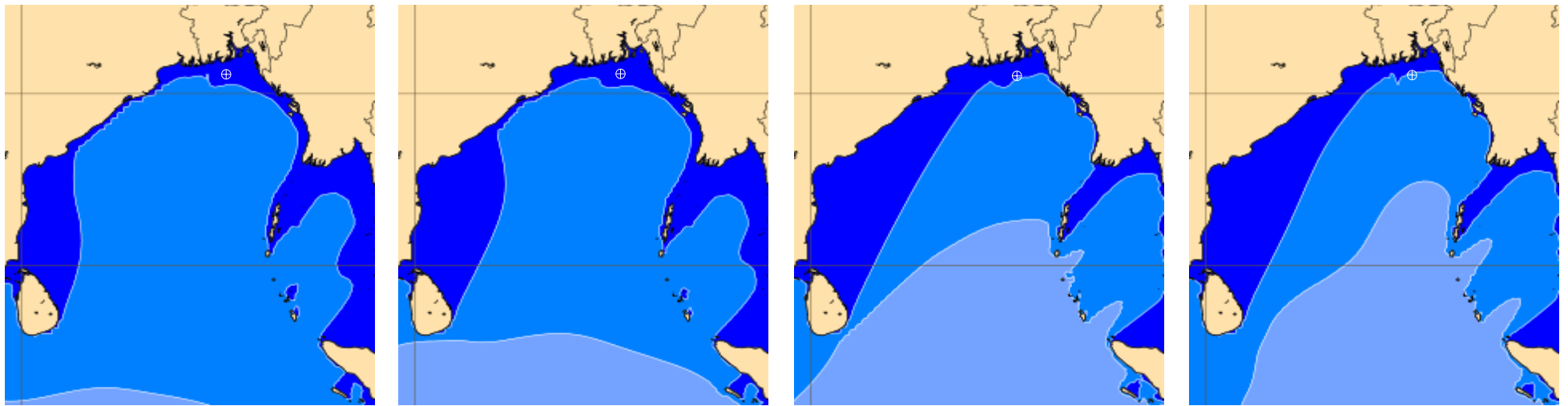
Date	Time	Max Wind Spd (kts)	Wind Direction	Wave Ht (m)	Sea State	Baro Pressure	Air Temp		Sea Surface Temp	Prob of Rain (%)	Sea State	Wave Ht (m)
							Max	Min				
06-05-23	0001	10	WSW	0.8	3	1005	32	30	29	7% (0.0 mm)	0	0
	0600	10	WSW	1.0	3	1006			29	8% (0.0 mm)	1	0 - 0.1
	1200	5	W	1.0	3	1007			30	38% (0.01mm)	2	0.1 - 0.5
	1800	9	WSW	1.0	3	1003			30	4% (0.0 mm)	3	0.5 - 1.25
07-05-23	0001	13	WSW	1.0	3	1003	33	29	29	6% (0.0 mm)	4	1.25 - 2.5
	0600	14	W	1.2	3	1004			29	11% (0.0 mm)	5	2.5 - 4.0
	1200	7	WSW	1.2	3	1005			30	8% (0.0 mm)	6	4.0 - 6.0
	1800	12	SW	1.2	3	1002			30	5% (0.0 mm)	7	6.0 - 9.0
08-05-23	0001	14	SW	1.3	4	1002	33	30	29	6% (0.0 mm)	8	9.0 - 14.0
	0600	12	W	1.5	4	1003			29	11% (0.0 mm)	9	Over 14.0
	1200	7	WNW	1.5	4	1004			30	8% (0.0 mm)		
	1800	14	SW	1.5	4	1001			30	5% (0.0 mm)		
09-05-23	0001	20	WSW	1.5	4	1002	33	30	29	6% (0.0 mm)		
	0600	10	WSW	1.4	4	1005			29	11% (0.0 mm)		
	1200	8	SW	1.5	4	1005			30	8% (0.0 mm)		
	1800	16	SSW	1.5	4	1002			30	5% (0.0 mm)		

**06 May 23 Sat (Probability 98%)**

**07 May 23 Sun (Probability 95%)**

**08 May 23 Mon (Probability 90%)**

**09 May 23 Tue (Probability 80%)**



Significant wave height(m)

# MARINE WEATHER FORECAST- 40 NM ESE OF PAYRA FAIRWAY (Lat 21° 07'N, Long 090° 45' E)

**DATE : 06 to 13 May 2023**

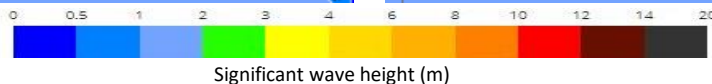
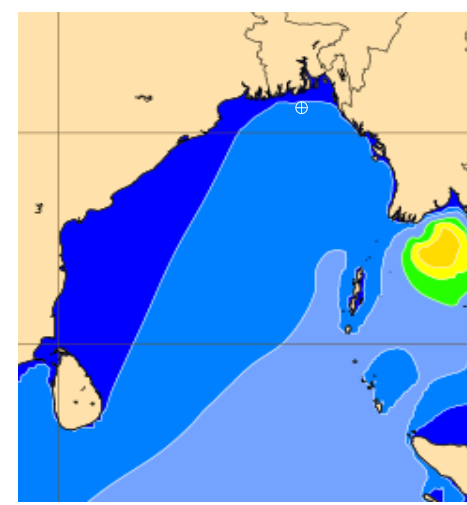
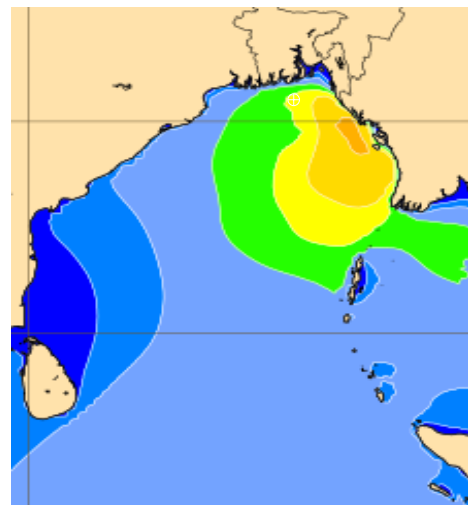
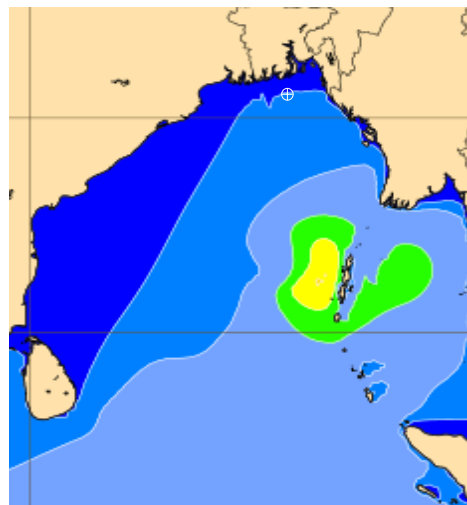
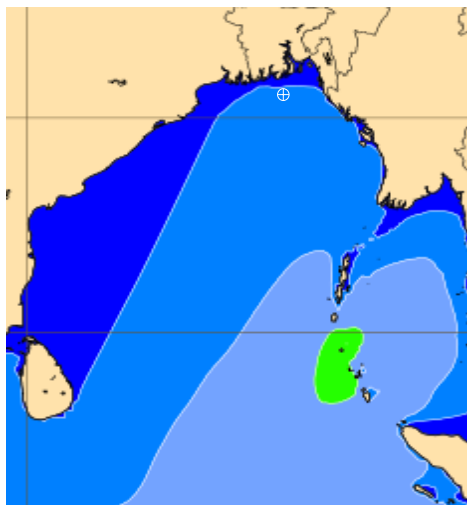
Date	Time	Max Wind Spd (kts)	Wind Direction	Wave Ht (m)	Sea State	Baro Pressure	Air Temp		Sea Surface Temp	Prob of Rain (%)	Sea State	Wave Ht (m)
							Max	Min				
10-05-23	0001	16	SSW	1.8	4	1003	32	30	30	12% (0.0 mm)	0	0
	0600	9	SSW	1.9	4	1004			29	4% (0.0 mm)	1	0 - 0.1
	1200	8	SW	1.9	4	1005			30	12% (0.0 mm)	2	0.1 - 0.5
	1800	11	SW	1.7	4	1002			30	11% (0.0 mm)	3	0.5 - 1.25
11-05-23	0001	11	SSE	1.6	4	1003	32	29	29	6% (0.0 mm)	4	1.25 - 2.5
	0600	6	W	1.4	4	1004			29	11% (0.0 mm)	5	2.5 - 4.0
	1200	5	SSE	1.3	4	1004			30	8% (0.0 mm)	6	4.0 - 6.0
	1800	9	SW	1.3	4	1001			30	5% (0.0 mm)	7	6.0 - 9.0
12-05-23	0001	7	S	1.9	4	1001	32	29	29	14% (0.0 mm)	8	9.0 - 14.0
	0600	4	ESE	2.8	5	1002			30	24% (0.0 mm)	9	Over 14.0
	1200	11	SSE	3.4	5	1001			30	22% (0.0 mm)		
	1800	5	SSW	4.1	6	999			30	16% (0.0 mm)		
13-05-23	0001	16	NE	4.5	6	998	33	29	30	34% (0.2 mm)		
	0600	18	NE	4.4	6	998			29	24% (0.0 mm)		
	1200	25	NW	4.0	5	995			30	21% (0.0 mm)		
	1800	23	W	3.1	5	995			30	23% (0.0 mm)		

**10 May 23 Wed (Probability 70%)**

**11 May 23 Thu (Probability 60%)**

**12 May 23 Fri (Probability 50%)**

**13 May 23 Sat (Probability 50%)**





# MARINE WEATHER FORECAST- 10 NM SOUTH OF MONGLA FAIRWAY (Lat 21° 16' N, Long 089° 34' E)

**DATE : 06 to 13 May 2023**

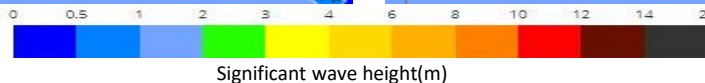
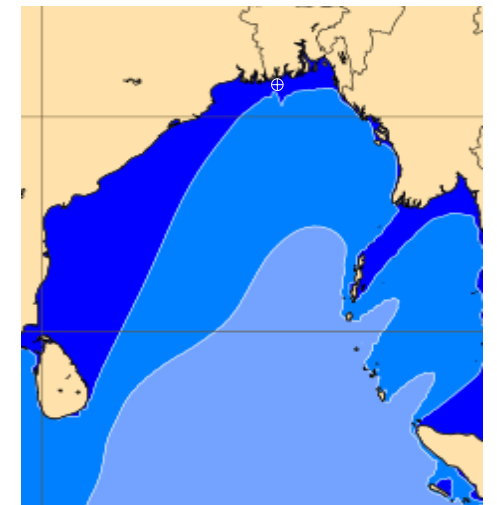
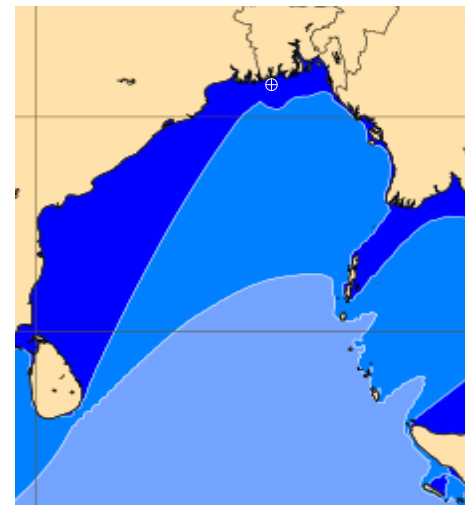
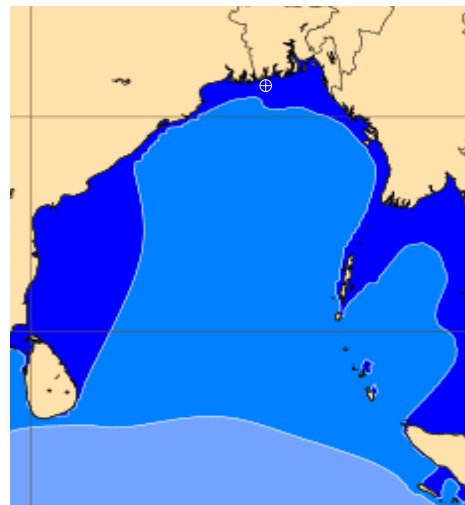
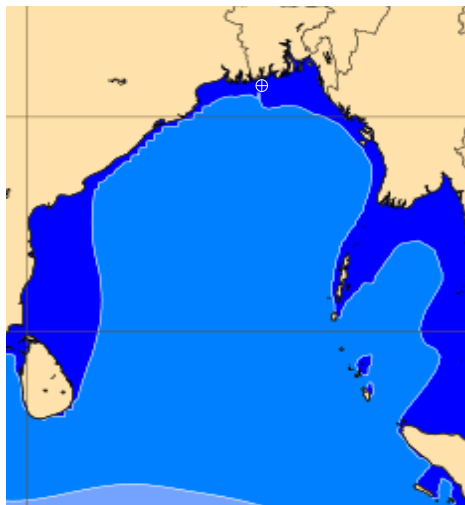
Date	Time	Max Wind Spd (kts)	Wind Direction	Wave Ht (m)	Sea State	Baro Pressure	Air Temp		Sea Surface Temp	Prob of Rain (%)	Sea State	Wave Ht (m)
							Max	Min				
06-05-23	0001	14	SW	1.1	3	1005	35	27	29	8% (0.0 mm)	0	0
	0600	13	WSW	1.2	3	1005			29	5% (0.0 mm)	1	0 - 0.1
	1200	11	WSW	1.2	3	1006			30	11% (0.0 mm)	2	0.1 - 0.5
	1800	11	SSW	1.1	3	1003			30	8% (0.0 mm)	3	0.5 - 1.25
07-05-23	0001	16	SW	1.2	3	1003	37	28	29	9% (0.0 mm)	4	1.25 - 2.5
	0600	18	WSW	1.4	4	1004			29	8% (0.0 mm)	5	2.5 - 4.0
	1200	11	SW	1.4	4	1005			30	11% (0.0 mm)	6	4.0 - 6.0
	1800	14	SSW	1.3	4	1001			30	6% (0.0 mm)	7	6.0 - 9.0
08-05-23	0001	20	SW	1.6	4	1002	38	28	29	6% (0.0 mm)	8	9.0 - 14.0
	0600	18	WSW	1.7	4	1003			29	7% (0.0 mm)	9	Over 14.0
	1200	9	WSW	1.6	4	1004			30	4% (0.0 mm)		
	1800	16	SSW	1.4	4	1001			30	12% (0.0 mm)		
09-05-23	0001	23	SW	1.6	4	1002	38	28	30	6% (0.0 mm)		
	0600	16	WSW	1.7	4	1004			29	6% (0.0 mm)		
	1200	11	SW	1.5	4	1005			30	7% (0.0 mm)		
	1800	21	SSW	1.6	4	1001			30	4% (0.0 mm)		

**06 May 23 Sat (Probability 98%)**

**07 May 23 Sun (Probability 95%)**

**08 May 23 Mon (Probability 90%)**

**09 May 23 Tue (Probability 80%)**



Significant wave height(m)

**MARINE WEATHER FORECAST- 10 NM SOUTH OF MONGLA FAIRWAY (Lat 21° 16' N, Long 089° 34' E)**

**DATE : 06 to 13 May 2023**

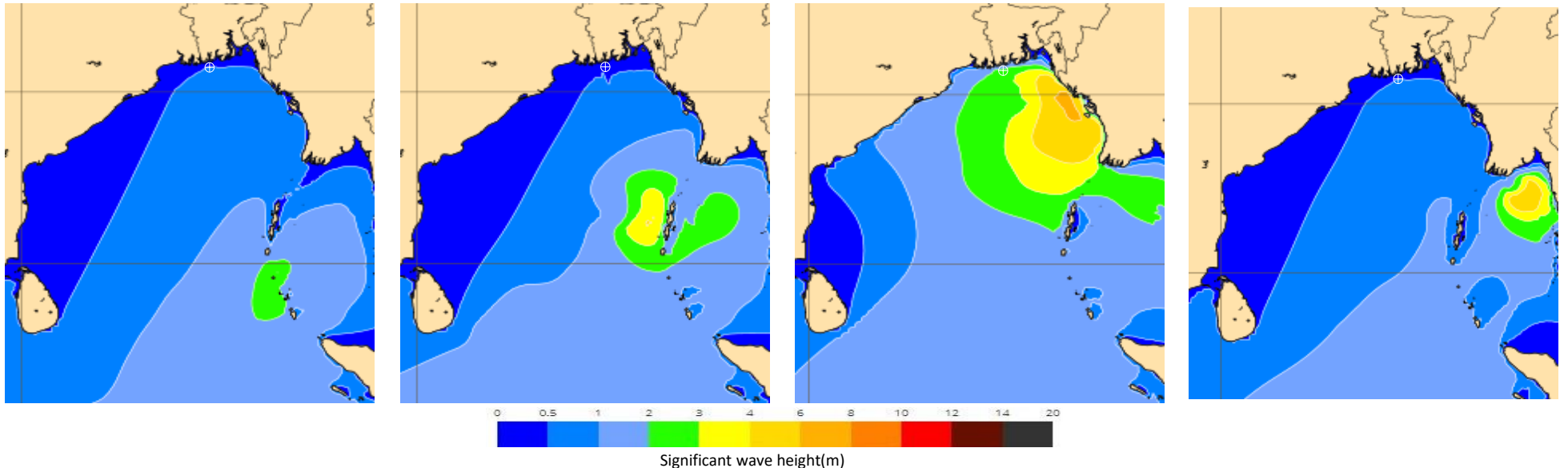
Date	Time	Max Wind Spd (kts)	Wind Direction	Wave Ht (m)	Sea State	Baro Pressure	Air Temp		Sea Surface Temp	Prob of Rain (%)	Sea State	Wave Ht (m)
							Max	Min				
10-05-23	0001	24	SW	2.0	4	1003	38	28	29	5% (0.0 mm)	0	0
	0600	14	SW	2.0	4	1004			29	7% (0.0 mm)	1	0 - 0.1
	1200	12	SSW	1.8	4	1004			30	4% (0.0 mm)	2	0.1 - 0.5
	1800	13	SSW	1.6	4	1002			30	12% (0.0 mm)	3	0.5 - 1.25
11-05-23	0001	14	SSW	1.5	4	1002	37	27	29	6% (0.0 mm)	4	1.25 - 2.5
	0600	7	SSW	1.4	4	1004			29	9% (0.0 mm)	5	2.5 - 4.0
	1200	3	SW	1.3	4	1003			30	7% (0.0 mm)	6	4.0 - 6.0
	1800	9	WSW	1.2	3	1000			30	12% (0.0 mm)	7	6.0 - 9.0
12-05-23	0001	13	SSW	1.6	4	1001	38	28	29	24% (0.0 mm)	8	9.0 - 14.0
	0600	4	SSW	2.5	4	1002			29	12% (0.0 mm)	9	Over 14.0
	1200	7	SSE	3.2	5	1002			30	24% (0.0 mm)		
	1800	13	SSE	3.6	5	999			30	22% (0.0 mm)		
13-05-23	0001	5	S	3.8	5	999	38	28	30	19% (0.0 mm)		
	0600	13	WNW	3.6	5	998			29	30% (0.2 mm)		
	1200	11	WNW	3.3	5	997			30	20% (0.0 mm)		
	1800	20	SW	3.0	5	996			30	21% (0.0 mm)		

**10 May 23 Wed (Probability 70%)**

**11 May 23 Thu (Probability 60%)**

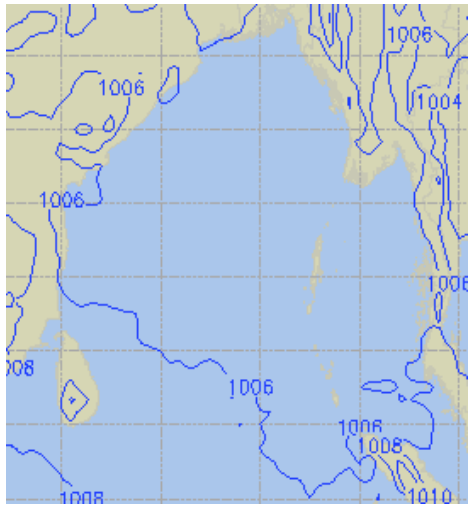
**12 May 23 Fri (Probability 50%)**

**13 May 23 Sat (Probability 50%)**

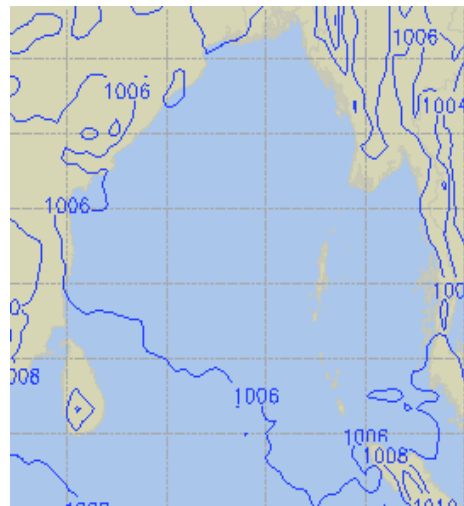


## PREDICTED SURFACE PRESSURE FORECAST (06 to 12 May 2023)

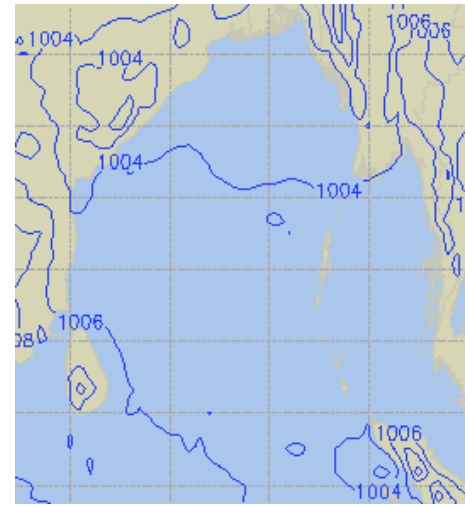
**06 May 23 Sat (Probability 98%)**



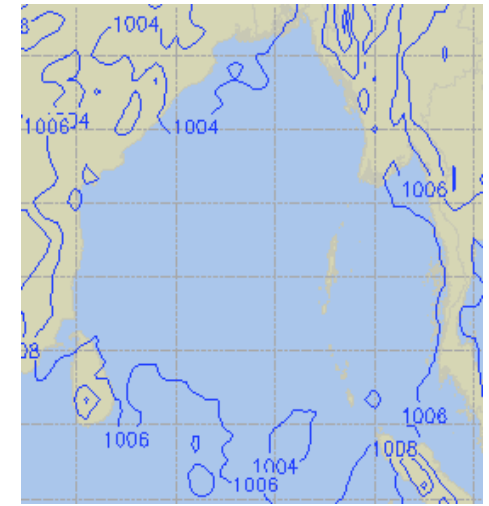
**07 May 23 Sun (Probability 95%)**



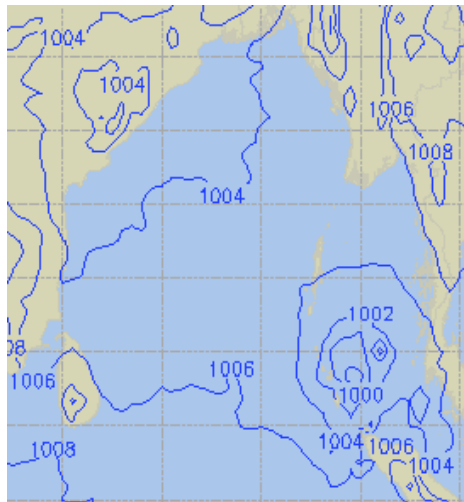
**08 May 23 Mon (Probability 90%)**



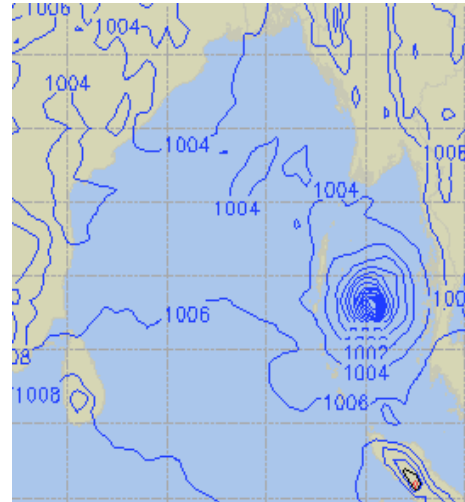
**09 May 23 Tue (Probability 80%)**



**10 May 23 Wed (Probability 70%)**



**11 May 23 Thu (Probability 60%)**



**12 May 23 Fri (Probability 50%)**

