



**SUMMARY OF MARINE WEATHER FORECAST**  
**COASTAL AREA OF BANGLADESH**  
**DATE: 06 to 13 April 2026**



Fleet Forecast	Seasonal low lies over South Bay of Bengal
Wind Direction, Speed	West/South-westerly 10-15 kts
Wave Height & Sea State	Ctg Outer Anchorage: 0.2 to 0.4 m (Sea state: 2) Abeam to Cox's Bazar: 0.6 to 0.9 m (Sea state: 3 ) St. Martin's Island: 0.7 to 1.0 m (Sea state 3) Payra Fairway Buoy: 0.8 to 1.2 m (Sea state: 3 ) Mongla Fairway Buoy: 0.8 to 1.2 m (Sea state: 3) Outer EEZ: 0.8 to 1.3 m (Sea state: 3 to 4 )
Sea Surface Temperature	23° C - 29° C
Baro Pressure	1008-1013 mb
Rainfall	Partly cloudy to cloudy sky & light rain/ thunder shower with gusty wind is likely to occur over Bay of Bengal and adjoining area.
Fog & Visibility	Hazy condition over the Bay of Bengal & coastal area, Visibility 1.5 – 5.0 km

**Marine Weather Outlook (06 to 13 April 2026):**

- Partly cloudy to cloudy sky & light rain/ thunder shower with gusty wind is likely to occur over Bay of Bengal and adjoining area.
- Hazy condition over the Bay of Bengal & coastal area.
- Day and Night temperature may remain nearly unchanged.



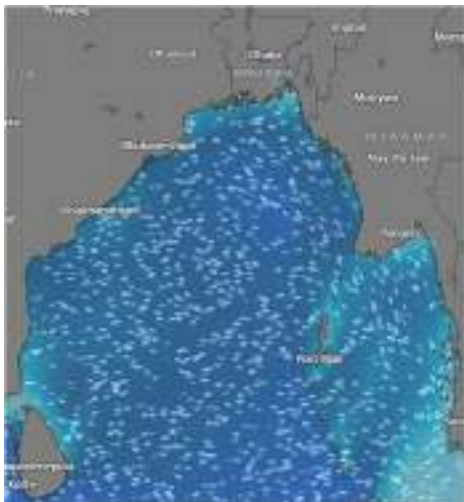
# MARINE WEATHER FORECAST (06 to 13 April 2026)

## PATENGA POINT (22° 12' N, 091° 38' E)

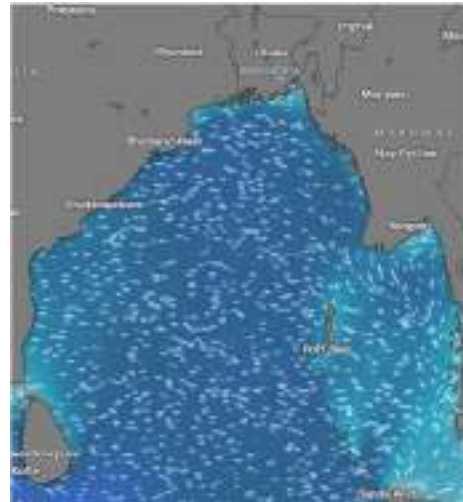


Date	Time	Air Temp (°C)		Sea Surface Temp (°C)	Baro Pressure (mbar)	Wind Direction	Wind Spd (kts)		Wave Ht (m)	Sea State	Humidity (%)	Prob of Rain (%)	Amount of Rain (mm)
		Max	Min				Gusting	Avg					
06-04-26 (Monday)	0001	32	23	25	1010	SSW	11	07	0.3	2	89	12	0.0
	0600			22	1011	SSW	10	06	0.3	2	90	16	0.0
	1200			28	1009	S	11	07	0.3	2	77	08	0.0
	1800			26	1008	SSW	09	05	0.2	2	87	15	0.0
07-04-26 (Tuesday)	0001	32	23	23	1011	S	12	08	0.2	2	88	12	0.0
	0600			22	1012	S	13	09	0.2	2	92	16	0.0
	1200			28	1010	SSW	12	08	0.2	2	78	08	0.0
	1800			26	1009	SSW	12	09	0.3	2	85	10	0.0
08-04-26 (Wednesday)	0001	32	23	23	1011	S	10	06	0.2	2	86	11	0.0
	0600			22	1012	SW	09	05	0.2	2	91	15	0.0
	1200			29	1010	SSW	12	09	0.2	2	73	09	0.0
	1800			26	1009	SW	10	06	0.2	2	85	11	0.0
09-04-26 (Thursday)	0001	32	23	23	1011	SW	09	05	0.2	2	89	10	0.0
	0600			22	1012	SW	05	03	0.2	2	90	13	0.0
	1200			29	1010	SSW	07	04	0.4	2	74	08	0.0
	1800			26	1009	SW	12	08	0.2	2	85	14	0.0

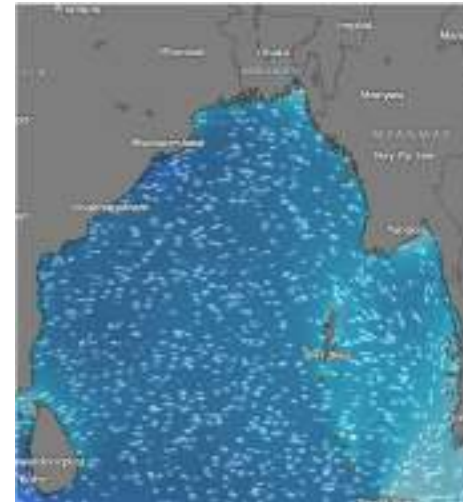
06 Apr 2026



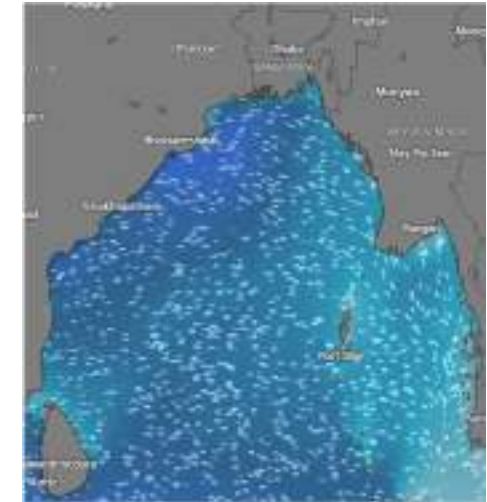
07 Apr 2026



08 Apr 2026



09 Apr 2026



Significant wave height (m)



## MARINE WEATHER FORECAST (06 to 13 April 2026) PATENGA POINT (22° 12' N, 091° 38' E)



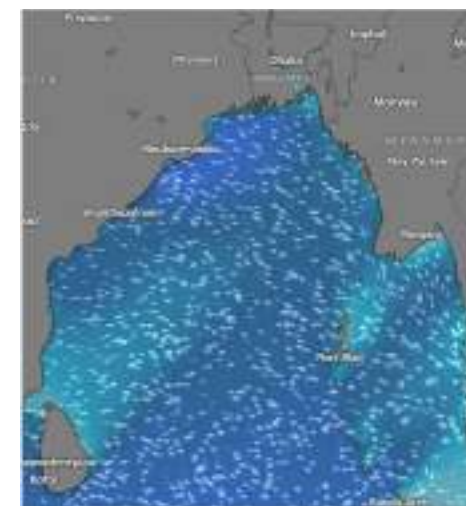
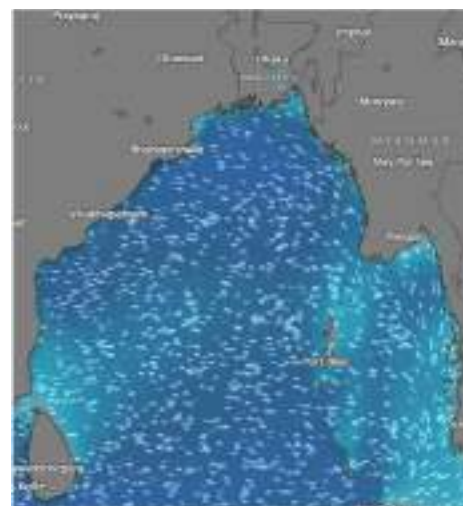
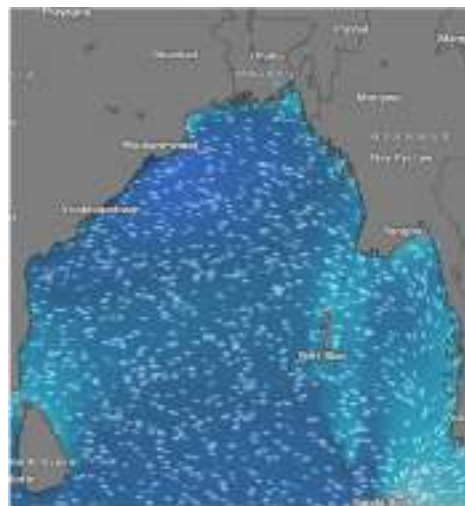
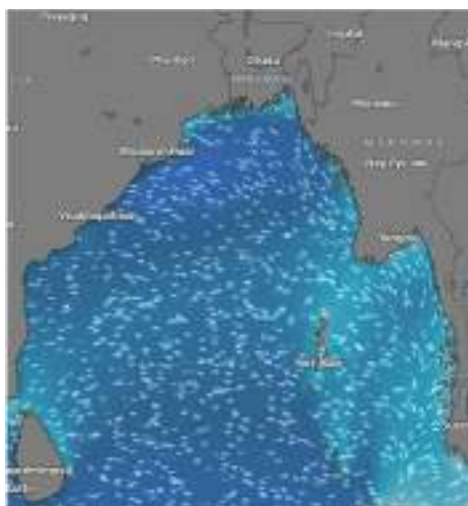
Date	Time	Air Temp (°C)		Sea Surface Temp (°C)	Baro Pressure (mbar)	Wind Direction	Wind Spd (kts)		Wave Ht (m)	Sea State	Humidity (%)	Prob of Rain (%)	Amount of Rain (mm)
		Max	Min				Gusting	Avg					
10-04-26 (Friday)	0001	32	24	23	1011	SSW	10	06	0.2	2	89	12	0.0
	0600			22	1012	SE	07	04	0.2	2	91	07	0.0
	1200			29	1010	SSW	10	06	0.2	2	75	15	0.0
	1800			26	1009	SSW	05	03	0.2	2	87	09	0.0
11-04-26 (Saturday)	0001	32	22	23	1010	SW	07	04	0.4	2	88	12	0.0
	0600			22	1011	SSE	09	05	0.3	2	90	07	0.0
	1200			29	1010	SE	05	03	0.2	2	74	09	0.0
	1800			26	1009	SW	09	05	0.3	2	86	16	0.0
12-04-26 (Sunday)	0001	32	23	23	1009	SSW	09	05	0.3	2	89	09	0.0
	0600			22	1010	SE	07	04	0.3	2	91	12	0.0
	1200			29	1008	SSW	12	08	0.3	2	75	07	0.0
	1800			26	1007	SSW	13	09	0.4	2	87	15	0.0
13-04-26 (Monday)	0001	32	23	22	1008	SSW	11	07	0.3	2	91	08	0.0
	0600			23	1010	SW	09	05	0.3	2	87	11	0.0
	1200			28	1011	S	11	07	0.3	2	76	09	0.0
	1800			27	1009	SW	12	08	0.3	2	85	13	0.0

10 Apr 2026

11 Apr 2026

12 Apr 2026

13 Apr 2026



Significant wave height (m)



## MARINE WEATHER FORECAST (06 to 13 April 2026) ABEAM TO KUTUBDIA (21° 51' N, 091° 40' E)

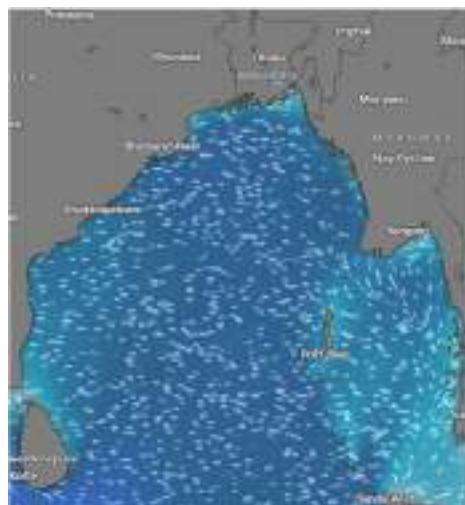


Date	Time	Air Temp (°C)		Sea Surface Temp (°C)	Baro Pressure (mbar)	Wind Direction	Wind Spd (kts)		Wave Ht (m)	Sea State	Humidity (%)	Prob of Rain (%)	Amount of Rain (mm)
		Max	Min				Gusting	Avg					
06-04-26 (Monday)	0001	32	23	23	1010	SSW	10	06	0.3	2	89	13	0.0
	0600			22	1011	S	07	04	0.3	2	90	12	0.0
	1200			28	1009	SSW	11	07	0.4	2	75	09	0.0
	1800			26	1008	SSW	10	06	0.4	2	86	13	0.0
07-04-26 (Tuesday)	0001	32	23	23	1011	SSW	07	04	0.4	2	89	12	0.0
	0600			22	1012	S	09	05	0.5	3	91	16	0.0
	1200			29	1010	SSW	10	07	0.3	2	76	10	0.0
	1800			26	1009	SW	12	08	0.3	2	86	16	0.0
08-04-26 (Wednesday)	0001	32	24	23	1011	S	11	07	0.4	2	89	09	0.0
	0600			22	1012	S	10	06	0.3	2	90	12	0.0
	1200			29	1010	SW	07	04	0.4	2	78	07	0.0
	1800			26	1009	S	14	10	0.4	2	85	10	0.0
09-04-26 (Thursday)	0001	32	23	23	1011	W	13	09	0.4	2	90	10	0.0
	0600			22	1012	SW	07	04	0.3	2	91	13	0.0
	1200			29	1010	SW	09	05	0.4	2	75	09	0.0
	1800			26	1009	W	07	04	0.4	2	87	14	0.0

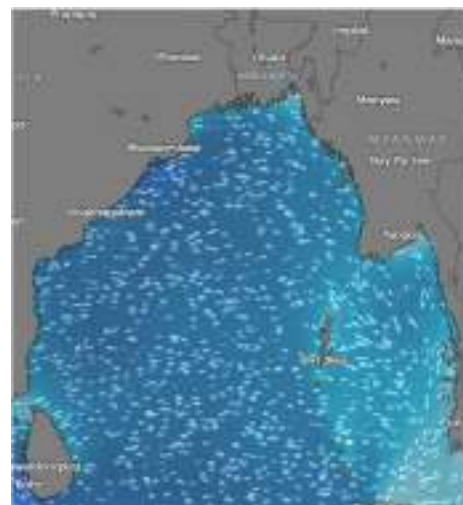
06 Apr 2026



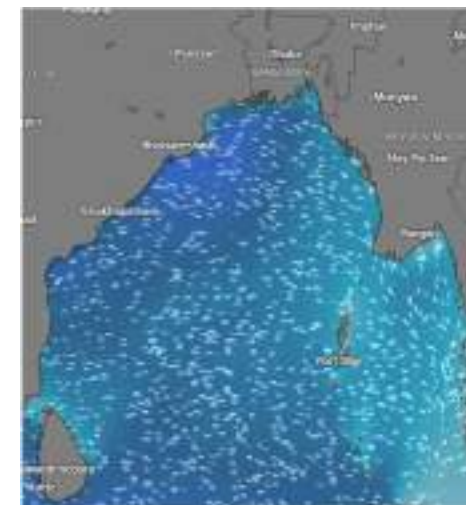
07 Apr 2026



08 Apr 2026



09 Apr 2026



Significant wave height (m)



# MARINE WEATHER FORECAST (06 to 13 April 2026)

## ABEAM TO KUTUBDIA (21° 51' N, 091° 40' E)



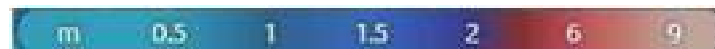
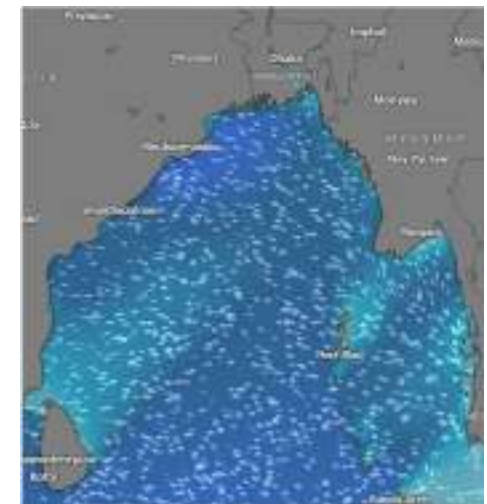
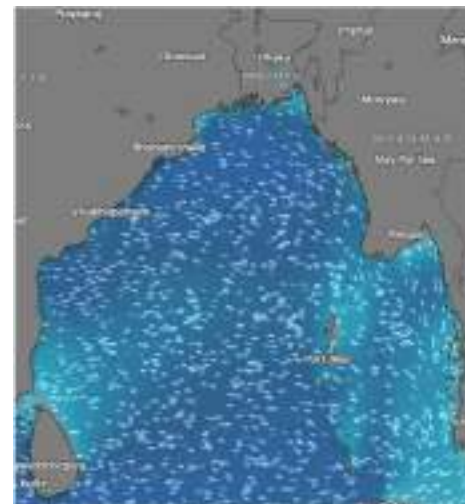
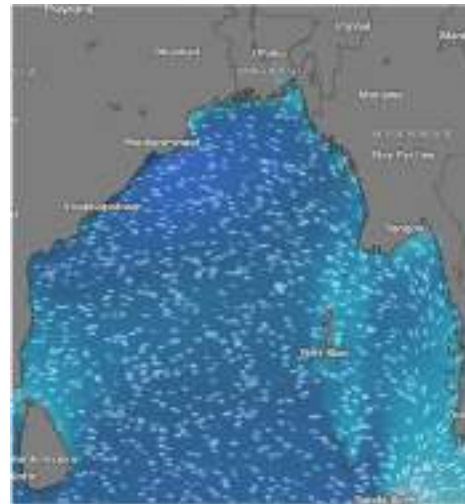
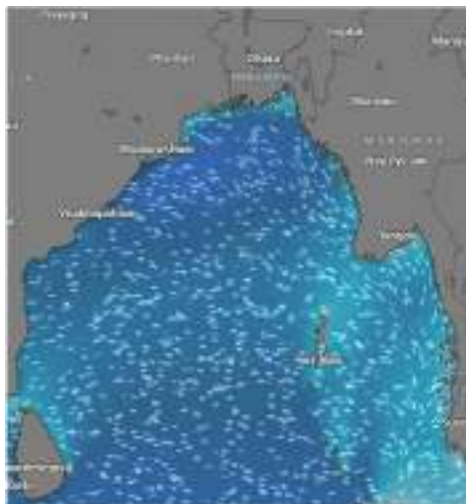
Date	Time	Air Temp (°C)		Sea Surface Temp (°C)	Baro Pressure (mbar)	Wind Direction	Wind Spd (kts)		Wave Ht (m)	Sea State	Humidity (%)	Prob of Rain (%)	Amount of Rain (mm)
		Max	Min				Gusting	Avg					
10-04-26 (Friday)	0001	32	23	23	1010	W	16	12	0.6	3	89	10	0.0
	0600			22	1011	SW	15	11	0.6	3	90	13	0.0
	1200			29	1010	SW	10	06	0.5	3	74	09	0.0
	1800			26	1009	W	14	10	0.5	3	86	15	0.0
11-04-26 (Saturday)	0001	32	22	23	1009	SW	11	07	0.4	2	90	09	0.0
	0600			22	1010	SSE	15	11	0.4	2	91	12	0.0
	1200			29	1008	S	11	07	0.4	2	75	11	0.0
	1800			26	1007	SSW	13	09	0.5	3	87	17	0.0
12-04-26 (Sunday)	0001	32	23	23	1009	SW	11	07	0.4	2	89	09	0.0
	0600			22	1010	SSE	15	11	0.4	2	90	12	0.0
	1200			29	1008	S	11	07	0.4	2	76	11	0.0
	1800			26	1007	SSW	13	09	0.5	3	87	17	0.0
13-04-26 (Monday)	0001	32	23	24	1009	SW	12	08	0.4	2	88	10	0.0
	0600			23	1010	SE	14	10	0.5	3	91	14	0.0
	1200			30	1008	S	10	07	0.4	2	77	12	0.0
	1800			27	1008	SW	14	10	0.5	3	88	15	0.0

10 Apr 2026

11 Apr 2026

12 Apr 2026

13 Apr 2026



Significant wave height (m)

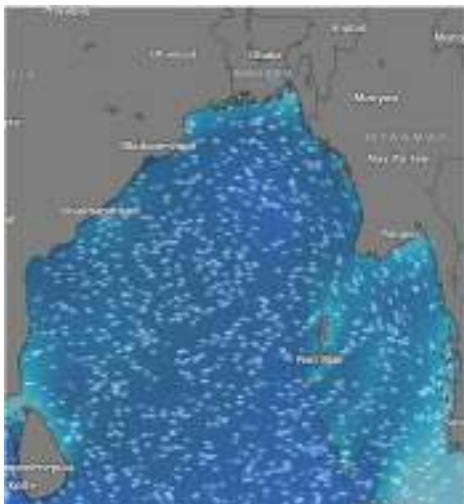


## MARINE WEATHER FORECAST (06 to 13 April 2026) ABEAM TO ELEPHANT POINT (21° 11' N, 091° 52' E)

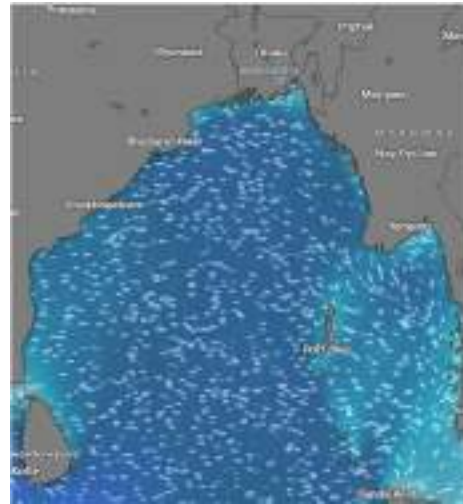


Date	Time	Air Temp (°C)		Sea Surface Temp (°C)	Baro Pressure (mbar)	Wind Direction	Wind Spd (kts)		Wave Ht (m)	Sea State	Humidity (%)	Prob of Rain (%)	Amount of Rain (mm)
		Max	Min				Gusting	Avg					
06-04-26 (Monday)	0001	32	22	23	1010	SSW	10	06	0.9	3	91	09	0.0
	0600			22	1011	SSW	07	04	0.8	3	92	15	0.0
	1200			28	1009	SE	11	07	0.8	3	76	08	0.0
	1800			26	1008	SW	15	11	0.8	3	90	13	0.0
07-04-26 (Tuesday)	0001	32	23	23	1011	W	12	08	0.8	3	89	10	0.0
	0600			22	1012	SW	12	08	0.8	3	91	15	0.0
	1200			29	1010	SW	16	12	0.8	3	74	09	0.0
	1800			26	1009	SSW	11	07	0.7	3	87	13	0.0
08-04-26 (Wednesday)	0001	32	23	23	1011	W	12	08	0.6	3	89	11	0.0
	0600			22	1012	NW	09	05	0.6	3	90	16	0.0
	1200			29	1010	W	10	06	0.7	3	77	08	0.0
	1800			26	1009	NNW	16	12	0.6	3	85	17	0.0
09-04-26 (Thursday)	0001	32	24	23	1011	SE	12	08	0.7	3	87	11	0.0
	0600			22	1012	W	09	05	0.6	3	90	16	0.0
	1200			29	1010	SW	10	06	0.8	3	74	08	0.0
	1800			26	1009	NNW	16	12	0.9	3	86	17	0.0

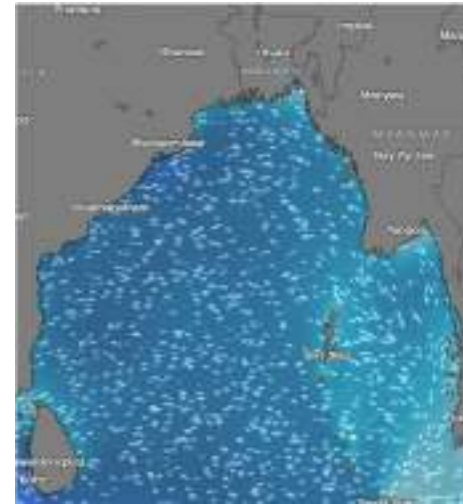
06 Apr 2026



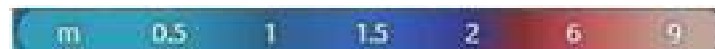
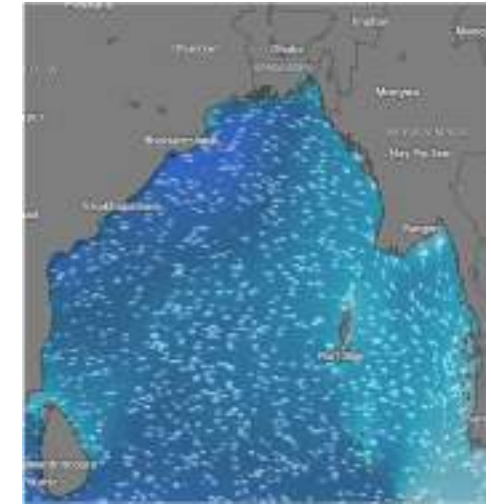
07 Apr 2026



08 Apr 2026



09 Apr 2026



Significant wave height (m)



# MARINE WEATHER FORECAST (06 to 13 April 2026)

## ABEAM TO ELEPHANT POINT (21° 11' N, 091° 52' E)



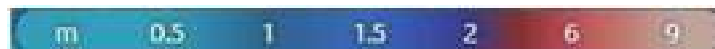
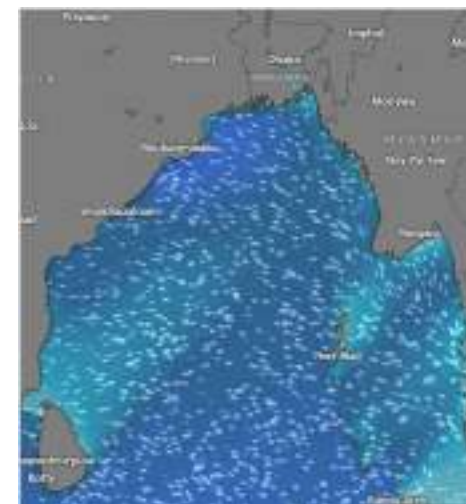
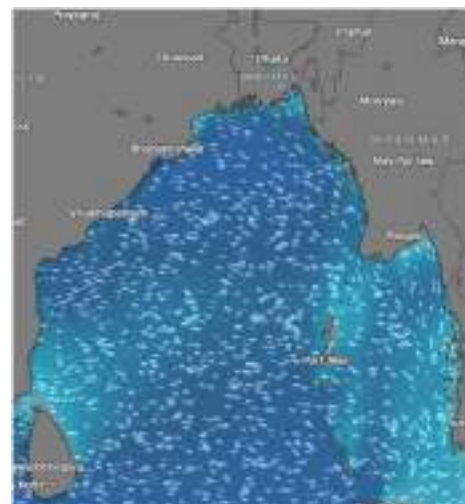
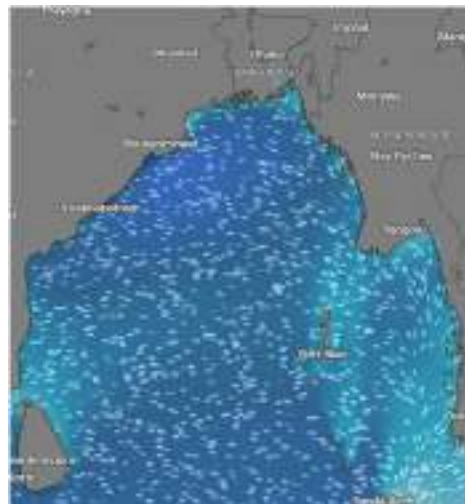
Date	Time	Air Temp (°C)		Sea Surface Temp (°C)	Baro Pressure (mbar)	Win Direction	Wind Spd (kts)		Wave Ht (m)	Sea State	Humidity (%)	Prob of Rain (%)	Amount of Rain (mm)
		Max	Min				Gusting	Avg					
10-04-26 (Friday)	0001	32	23	23	1010	S	10	06	0.8	3	88	09	0.0
	0600			22	1011	SW	16	12	0.8	3	91	16	0.0
	1200			29	1010	SW	13	09	0.8	3	75	08	0.0
	1800			26	1009	W	09	05	0.8	3	87	15	0.0
11-04-26 (Saturday)	0001	32	23	23	1009	W	11	10	0.8	3	90	08	0.0
	0600			22	1010	SE	12	08	0.8	3	92	13	0.0
	1200			29	1008	W	07	04	0.8	3	74	11	0.0
	1800			26	1007	SW	11	07	0.9	3	86	16	0.0
12-04-26 (Sunday)	0001	32	22	23	1009	W	11	10	0.8	3	90	08	0.0
	0600			22	1010	SE	12	08	0.8	3	92	13	0.0
	1200			29	1008	W	07	04	0.8	3	77	11	0.0
	1800			26	1007	SW	11	07	0.9	3	85	16	0.0
13-04-26 (Monday)	0001	32	22	22	1009	SW	14	10	0.8	3	91	11	0.0
	0600			23	1010	SE	13	09	0.7	3	90	12	0.0
	1200			28	1009	SW	09	05	0.8	3	73	13	0.0
	1800			26	1008	SSW	12	09	0.8	3	84	15	0.0

10 Apr 2026

11 Apr 2026

12 Apr 2026

13 Apr 2026



Significant wave height (m)

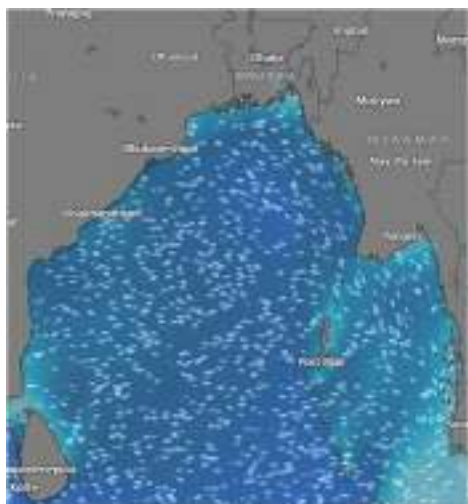


## MARINE WEATHER FORECAST (06 to 13 April 2026) ABEAM TO ST. MARTIN'S LIGHT HOUSE (20° 37' N, 092° 08' E)

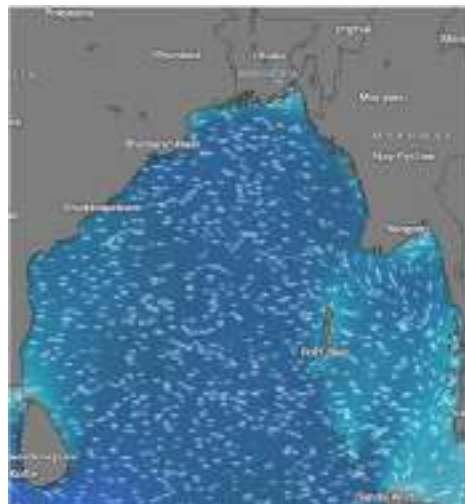


Date	Time	AirTemp (°C)		Sea Surface Temp (°C)	Baro Pressure (mbar)	Wind Direction	Wind Spd (kts)		Wave Ht (m)	Sea State	Humidity (%)	Prob of Rain (%)	Amount of Rain (mm)
		Max	Min				Gusting	Avg					
06-04-26 (Monday)	0001	32	24	23	1010	SW	12	08	0.9	3	88	09	0.0
	0600			22	1011	SW	07	04	0.9	3	92	12	0.0
	1200			28	1009	W	14	10	0.8	3	76	09	0.0
	1800			26	1008	W	15	11	0.9	3	87	14	0.0
07-04-26 (Tuesday)	0001	32	23	23	1011	NW	14	10	0.9	3	89	10	0.0
	0600			22	1012	NW	12	08	0.8	3	90	15	0.0
	1200			29	1010	W	14	10	0.8	3	75	08	0.0
	1800			26	1009	NW	10	06	0.8	3	89	16	0.0
08-04-26 (Wednesday)	0001	32	22	23	1011	NW	13	09	0.7	3	89	10	0.0
	0600			22	1012	NNW	11	07	0.7	3	90	15	0.0
	1200			29	1010	NW	12	08	0.8	3	77	08	0.0
	1800			26	1009	NW	20	15	0.8	3	85	16	0.0
09-04-26 (Thursday)	0001	31	24	23	1011	NW	13	09	0.6	3	88	10	0.0
	0600			22	1012	NNW	11	07	0.6	3	91	15	0.0
	1200			29	1010	W	10	06	0.7	3	75	12	0.0
	1800			26	1009	NW	17	13	0.7	3	86	17	0.0

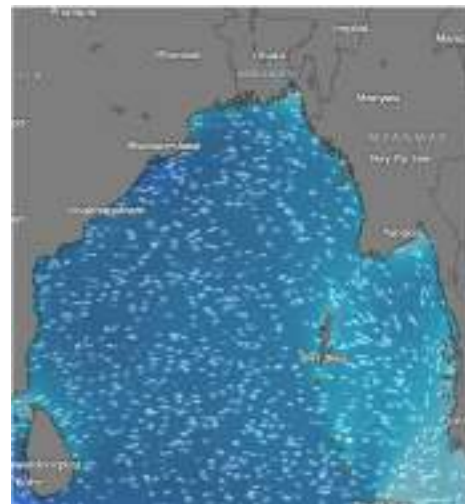
06 Apr 2026



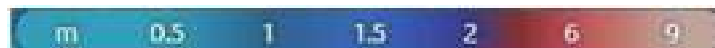
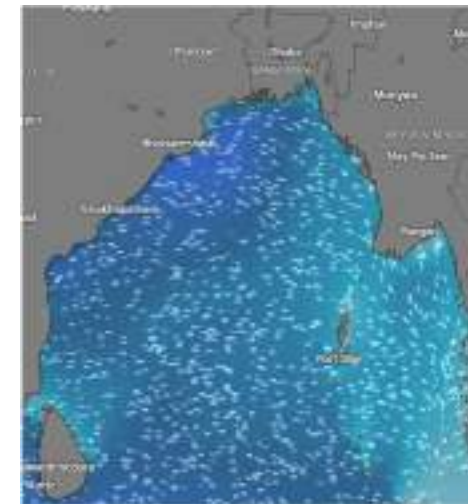
07 Apr 2026



08 Apr 2026



09 Apr 2026



Significant wave height (m)



## MARINE WEATHER FORECAST (06 to 13 April 2026) ABEAM TO ST. MARTIN'S LIGHT HOUSE (20° 37' N, 092° 08' E)



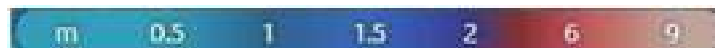
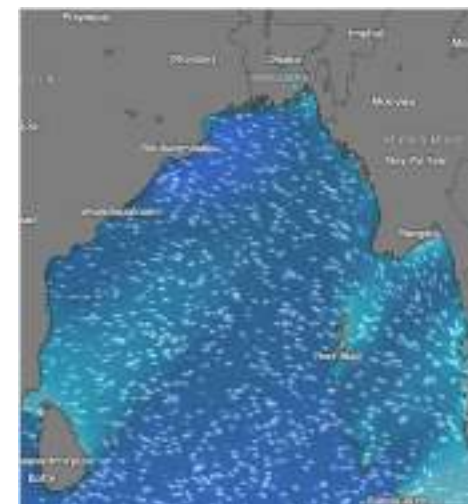
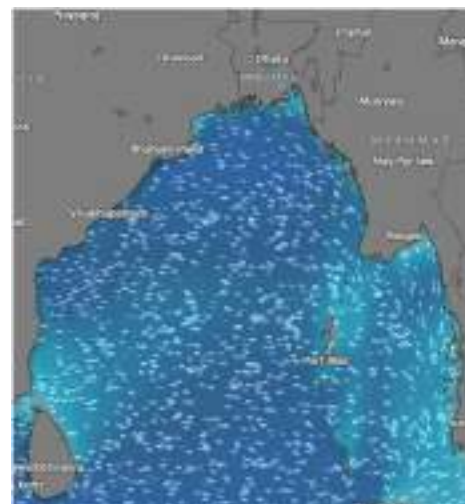
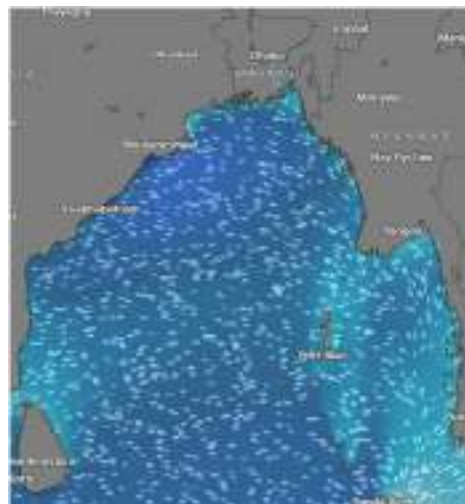
Date	Time	Air Temp (°C)		Sea Surface Temp (°C)	Baro Pressure (mbar)	Wind Direction	Wind Spd (kts)		Wave Ht (m)	Sea State	Humidity (%)	Prob of Rain (%)	Amount of Rain (mm)
		Max	Min				Gusting	Avg					
10-04-26 (Friday)	0001	32	23	23	1010	S	05	03	0.8	3	88	09	0.0
	0600			22	1011	W	12	08	0.9	3	90	16	0.0
	1200			29	1010	W	14	10	1.0	3	74	09	0.0
	1800			26	1009	SW	11	07	1.0	3	87	14	0.0
11-04-26 (Saturday)	0001	32	23	23	1009	W	12	08	0.9	3	89	10	0.0
	0600			22	1010	E	10	06	0.8	3	91	15	0.0
	1200			29	1008	W	11	07	0.9	3	75	12	0.0
	1800			26	1007	SW	13	09	0.9	3	86	17	0.0
12-04-26 (Sunday)	0001	32	22	23	1009	W	12	08	0.9	3	89	10	0.0
	0600			22	1010	E	10	06	0.8	3	90	15	0.0
	1200			29	1008	W	11	07	0.9	3	77	12	0.0
	1800			26	1007	SW	13	09	0.9	3	85	17	0.0
13-04-26 (Monday)	0001	32	22	24	1008	SW	14	09	0.8	3	88	11	0.0
	0600			25	1011	SSE	12	08	0.8	3	89	13	0.0
	1200			30	1008	SW	11	07	0.9	3	78	11	0.0
	1800			27	1009	S	12	08	0.8	3	86	15	0.0

10 Apr 2026

11 Apr 2026

12 Apr 2026

13 Apr 2026



Significant wave height (m)



# MARINE WEATHER FORECAST (06 to 13 April 2026)



## PAYRA FAIRWAY (21° 22' N, 090° 6' E)

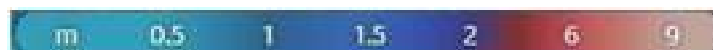
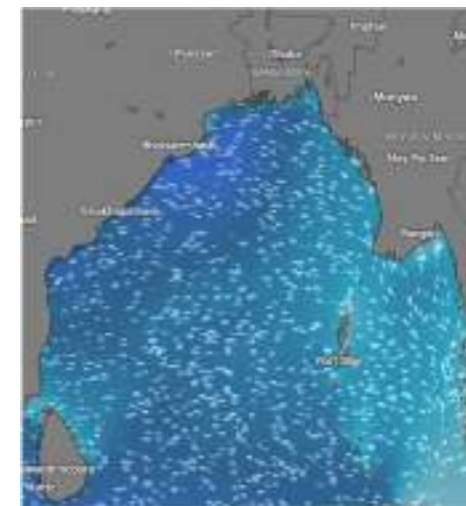
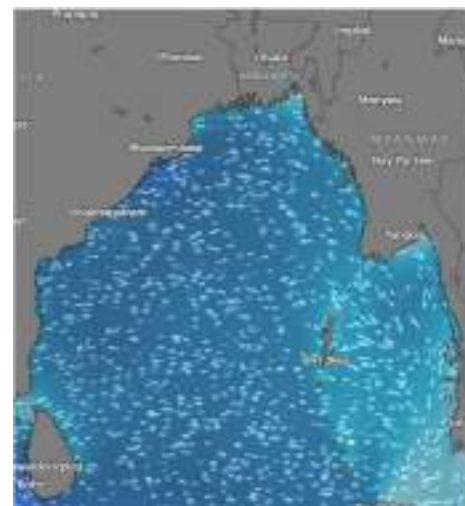
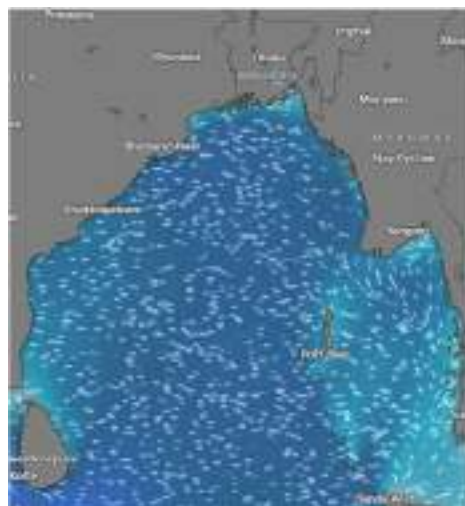
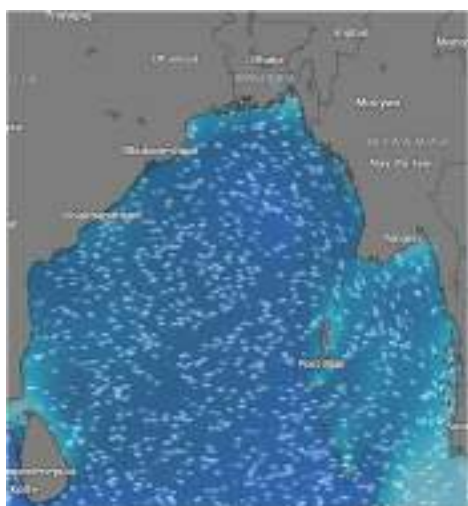
Date	Time	Air Temp (°C)		Sea Surface Temp (°C)	Baro Pressure (mbar)	Wind Direction	Wind Spd (kts)		Wave Ht (m)	Sea State	Humidity (%)	Prob of Rain (%)	Amount of Rain (mm)
		Max	Min				Gusting	Avg					
06-04-26 (Monday)	0001	32	23	23	1010	SSW	11	07	1.0	3	87	09	0.0
	0600			22	1011	SW	12	08	0.9	3	90	12	0.0
	1200			28	1009	SSW	11	07	0.9	3	72	07	0.0
	1800			26	1008	SSW	13	09	0.9	3	84	12	0.0
07-04-26 (Tuesday)	0001	31	23	23	1011	SSW	12	08	0.9	3	88	10	0.0
	0600			22	1012	SW	14	10	0.9	3	90	15	0.0
	1200			29	1010	SSW	12	08	0.9	3	76	09	0.0
	1800			26	1009	SW	13	09	0.9	3	85	16	0.0
08-04-26 (Wednesday)	0001	32	23	23	1011	SSW	14	10	0.9	3	89	11	0.0
	0600			22	1012	SSW	14	10	0.9	3	91	15	0.0
	1200			29	1010	SW	12	08	0.8	3	75	09	0.0
	1800			26	1009	SW	10	06	0.9	3	86	13	0.0
09-04-26 (Thursday)	0001	32	24	23	1011	SSW	12	08	0.9	3	88	12	0.0
	0600			22	1012	SW	12	08	1.0	3	90	16	0.0
	1200			29	1010	SW	11	07	1.1	3	08	09	0.0
	1800			26	1009	W	09	05	1.2	3	87	14	0.0

06 Apr 2026

07 Apr 2026

08 Apr 2026

09 Apr 2026



Significant wave height (m)



# MARINE WEATHER FORECAST (06 to 13 April 2026)



## PAYRA FAIRWAY (21° 22' N, 090° 6' E)

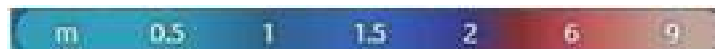
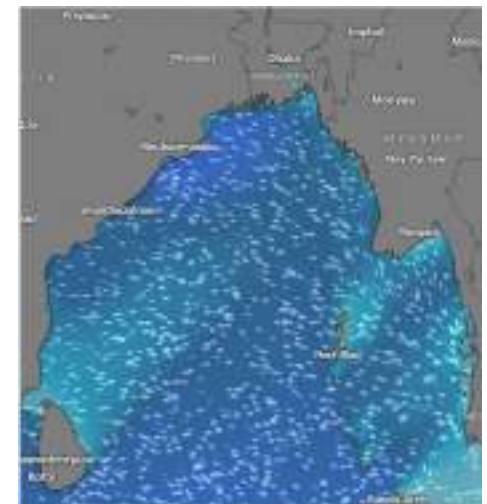
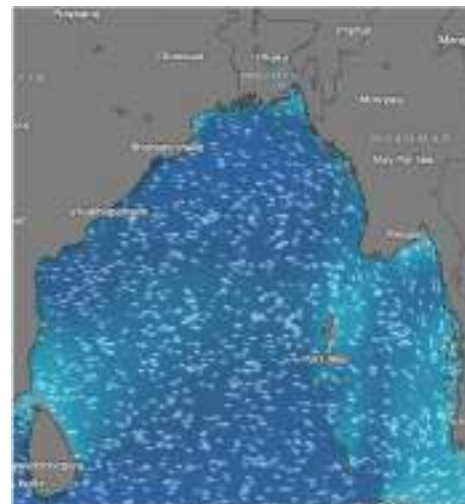
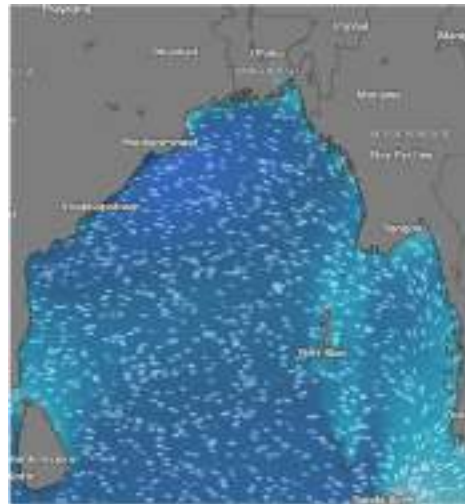
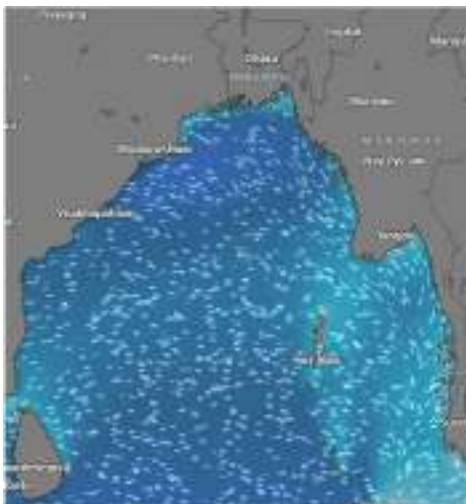
Date	Time	Air Temp (°C)		Sea Surface Temp (°C)	Baro Pressure (mbar)	Wind Direction	Wind Spd (kts)		Wae Ht (m)	Sea State	Humidity (%)	Prob of Rain (%)	Amount of Rain (mm)
		Max	Min				Gusting	Avg					
10-04-26 (Friday)	0001	32	23	23	1010	SSW	10	06	1.2	3	89	12	0.0
	0600			22	1011	SW	15	11	1.1	3	91	16	0.0
	1200			29	1010	SW	14	10	1.1	3	74	08	0.0
	1800			26	1009	SW	16	12	1.1	3	86	17	0.0
11-04-26 (Saturday)	0001	32	23	23	1009	SSW	12	08	0.9	3	88	09	0.0
	0600			22	1010	SW	15	11	1.0	3	90	14	0.0
	1200			29	1008	SW	14	10	1.0	3	76	12	0.0
	1800			26	1007	SW	15	11	1.1	3	87	16	0.0
12-04-26 (Sunday)	0001	31	22	23	1009	SSW	12	08	0.9	3	88	09	0.0
	0600			22	1010	SW	15	11	1.0	3	89	14	0.0
	1200			29	1009	SW	14	10	1.0	3	77	12	0.0
	1800			26	1007	SW	15	11	1.1	3	84	16	0.0
13-04-26 (Monday)	0001	31	23	24	1010	SSW	15	10	0.9	3	89	08	0.0
	0600			23	1011	S	14	09	1.0	3	90	13	0.0
	1200			29	1009	SW	13	09	1.0	3	78	14	0.0
	1800			27	1009	SSW	14	10	1.0	3	86	15	0.0

10 Apr 2026

11 Apr 2026

12 Apr 2026

13 Apr 2026



Significant wave height (m)



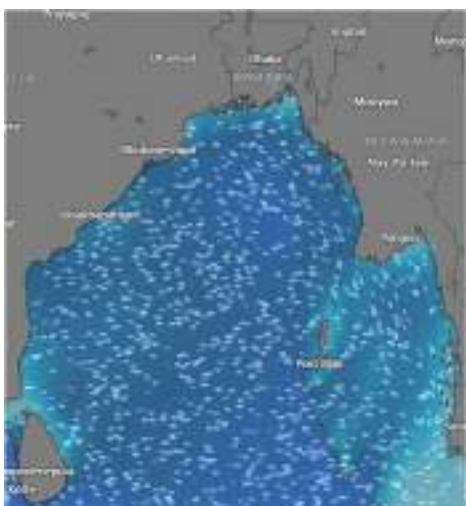
# MARINE WEATHER FORECAST (06 to 13 April 2026)

## MONGLA FAIRWAY (21° 26' N, 089° 34' E)

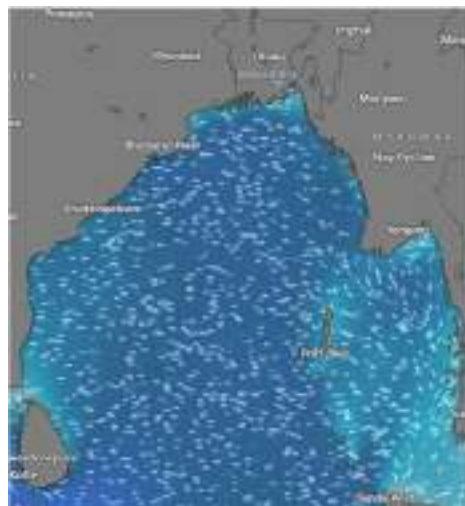


Date	Time	Air Temp (°C)		Sea Surface Temp (°C)	Baro Pressure (mbar)	Wind Direction	Wind Spd (kts)		Wave Ht (m)	Sea State	Humidity (%)	Prob of Rain (%)	Amount of Rain (mm)
		Max	Min				Gusting	Avg					
06-04-26 (Monday)	0001	31	23	23	1010	SSW	13	09	0.9	3	89	11	0.0
	0600			22	1011	SW	14	10	0.9	3	92	13	0.0
	1200			28	1009	SSW	13	09	0.9	3	75	09	0.0
	1800			26	1008	SSW	14	10	1.0	3	85	13	0.0
07-04-26 (Tuesday)	0001	31	23	23	1011	SSW	13	09	1.0	3	89	10	0.0
	0600			22	1012	SW	14	10	1.0	3	90	12	0.0
	1200			29	1010	SSW	13	09	1.0	3	75	09	0.0
	1800			26	1009	SSW	12	08	0.9	3	87	15	0.0
08-04-26 (Wednesday)	0001	32	23	23	1011	SSW	15	11	1.0	3	89	07	0.0
	0600			22	1012	SW	15	11	0.9	3	90	13	0.0
	1200			29	1010	SW	14	10	0.9	3	78	12	0.0
	1800			26	1009	SSW	12	08	0.8	3	83	18	0.0
09-04-26 (Thursday)	0001	32	24	24	1011	SSW	12	08	0.9	3	88	08	0.0
	0600			22	1012	W	14	10	1.1	3	90	16	0.0
	1200			29	1010	W	15	11	1.2	3	75	07	0.0
	1800			26	1009	SW	11	07	1.1	3	86	12	0.0

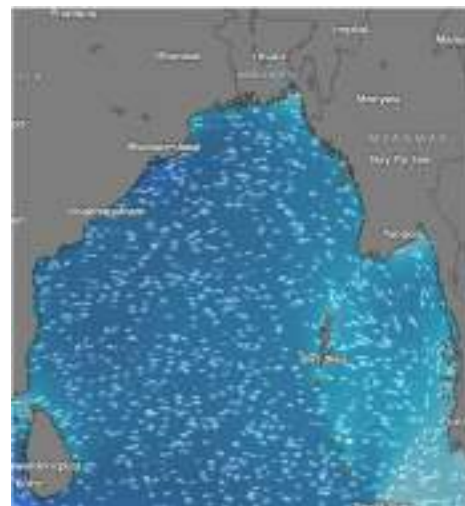
06 Apr 2026



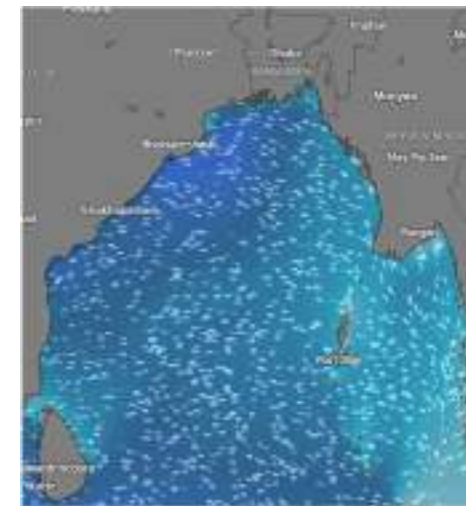
07 Apr 2026



08 Apr 2026



09 Apr 2026



Significant wave height (m)



# MARINE WEATHER FORECAST (06 to 13 April 2026)

## MONGLA FAIRWAY (21° 26' N, 089° 34' E)



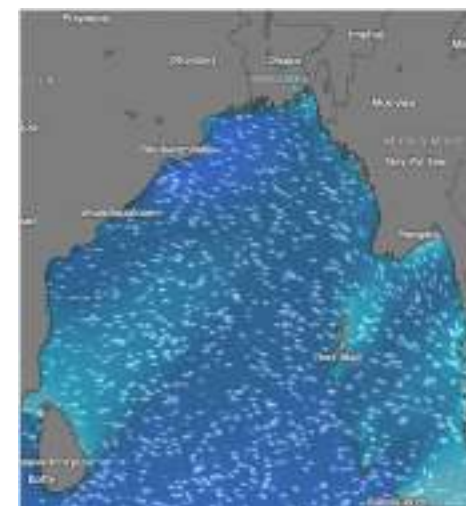
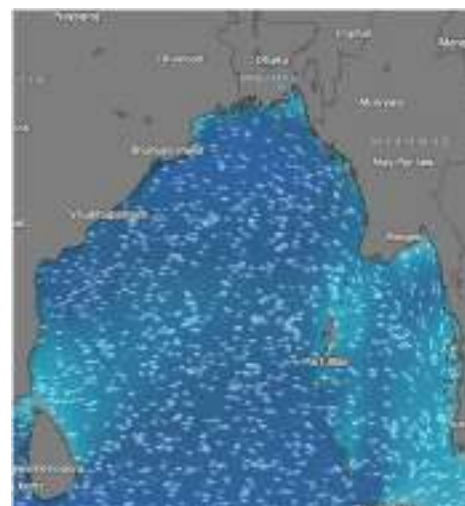
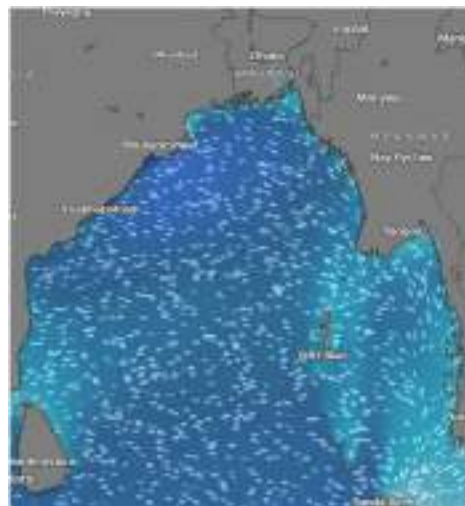
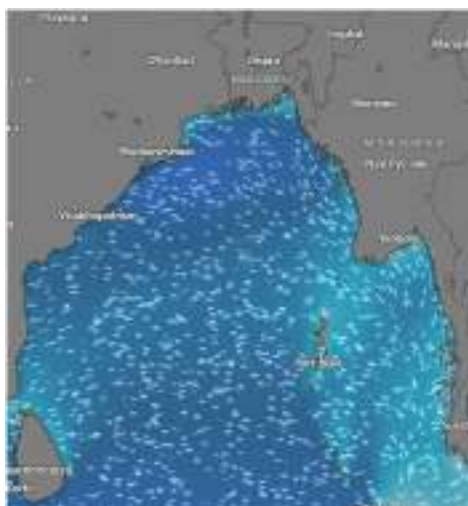
Date	Time	Air Temp (°C)		Sea Surface Temp (°C)	Baro Pressure (mbar)	Wind Direction	Wind Spd (kts)		Wave Ht (m)	Sea State	Humidity (%)	Prob of Rain (%)	Amount of Rain (mm)
		Max	Min				Gusting	Avg					
10-04-26 (Friday)	0001	32	24	23	1010	W	16	12	1.1	3	89	08	0.0
	0600			22	1011	SW	12	08	1.2	3	91	14	0.0
	1200			29	1010	SW	16	12	1.2	3	74	09	0.0
	1800			26	1009	SW	15	11	1.1	3	85	13	0.0
11-04-26 (Saturday)	0001	32	23	23	1009	SSW	14	10	1.0	3	88	07	0.0
	0600			22	1010	W	16	12	1.0	3	90	15	0.0
	1200			29	1008	W	15	11	1.1	3	75	08	0.0
	1800			26	1007	SW	16	12	1.1	3	86	14	0.0
12-04-26 (Sunday)	0001	31	23	23	1009	SSW	14	10	1.0	3	88	07	0.0
	0600			22	1010	W	16	12	1.0	3	90	15	0.0
	1200			29	1008	W	15	11	1.1	3	75	08	0.0
	1800			26	1007	SW	16	12	1.1	3	86	14	0.0
13-04-26 (Monday)	0001	31	22	23	1009	SSW	15	11	1.0	3	87	09	0.0
	0600			23	1011	W	16	12	1.0	3	88	14	0.0
	1200			28	1009	SW	14	10	0.9	3	79	09	0.0
	1800			26	1009	SSW	15	11	1.0	3	82	12	0.0

10 Apr 2026

11 Apr 2026

12 Apr 2026

13 Apr 2026



Significant wave height (m)



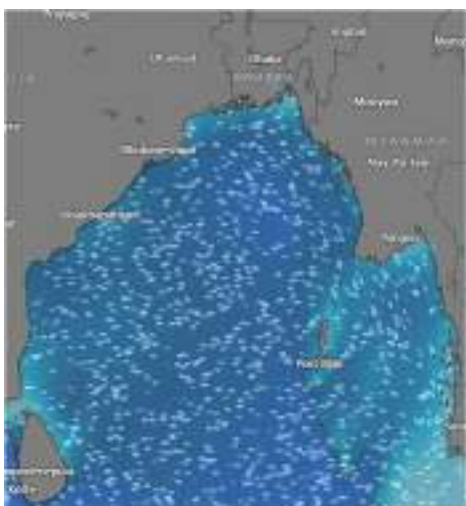
## MARINE WEATHER FORECAST (06 to 13 April 2026)

### OUTER EEZ (18° 48' N, 090° 30' E)

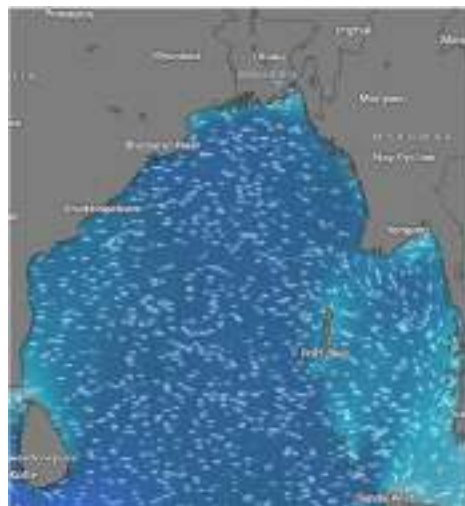


Date	Time	Air Temp (°C)		Sea Surface Temp (°C)	Baro Pressure (mbar)	Wind Direction	Wind Spd (kts)		Wave Ht (m)	Sea State	Humidity (%)	Prob of Rain (%)	Amount of Rain (mm)
		Max	Min				Gusting	Avg					
06-04-26 (Monday)	0001	31	22	23	1010	SW	14	10	1.2	3	90	07	0.0
	0600			22	1011	SW	14	10	1.2	3	81	15	0.0
	1200			26	1009	W	15	11	1.1	3	76	09	0.0
	1800			26	1008	W	13	09	1.1	3	85	13	0.0
07-04-26 (Tuesday)	0001	31	23	23	1011	SW	12	08	1.0	3	90	12	0.0
	0600			22	1012	SSW	12	08	1.0	3	91	12	0.0
	1200			27	1010	W	11	07	1.0	3	74	08	0.0
	1800			26	1009	W	13	09	0.9	3	85	16	0.0
08-04-26 (Wednesday)	0001	31	22	23	1011	W	10	06	0.9	3	89	09	0.0
	0600			22	1012	W	11	07	0.8	3	90	12	0.0
	1200			27	1010	W	09	05	0.8	3	74	06	0.0
	1800			26	1009	SW	13	09	0.8	3	86	13	0.0
09-04-26 (Thursday)	0001	30	22	24	1011	SW	11	07	0.8	3	89	08	0.0
	0600			22	1012	SW	11	07	0.8	3	91	13	0.0
	1200			27	1010	W	09	05	0.9	3	74	12	0.0
	1800			26	1009	W	12	08	1.0	3	87	16	0.0

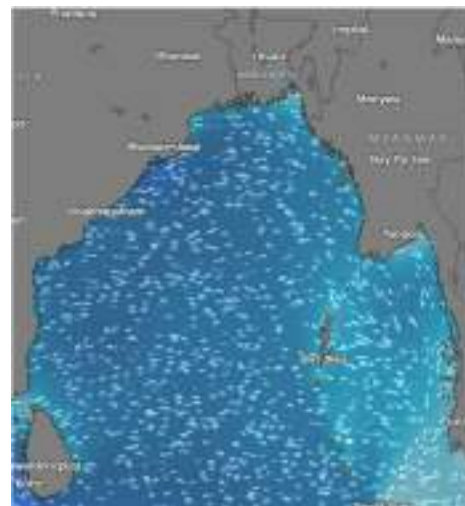
06 Apr 2026



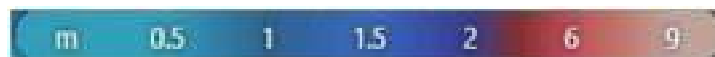
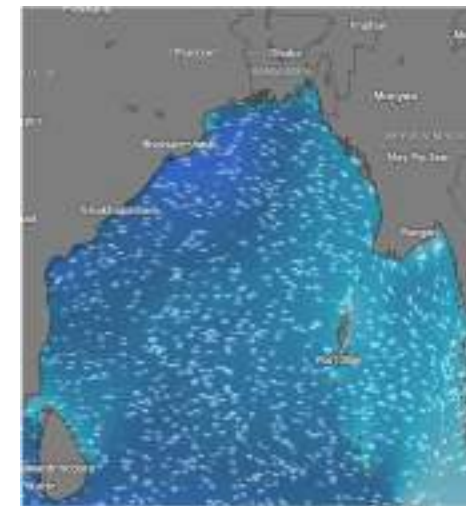
07 Apr 2026



08 Apr 2026



09 Apr 2026



Significant wave height (m)



# MARINE WEATHER FORECAST (06 to 13 April 2026)

## OUTER EEZ (18° 48' N, 090° 30' E)



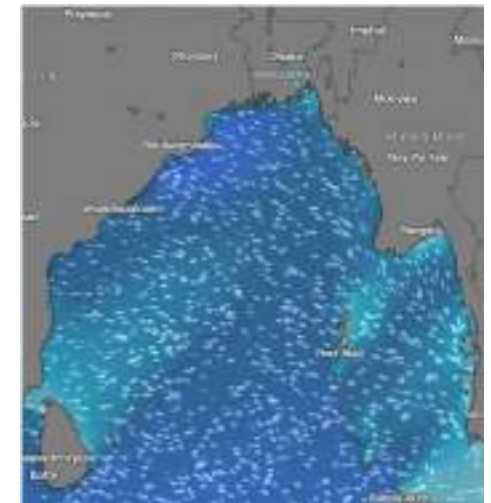
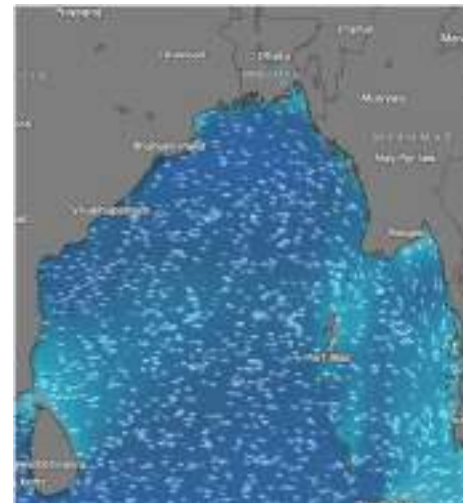
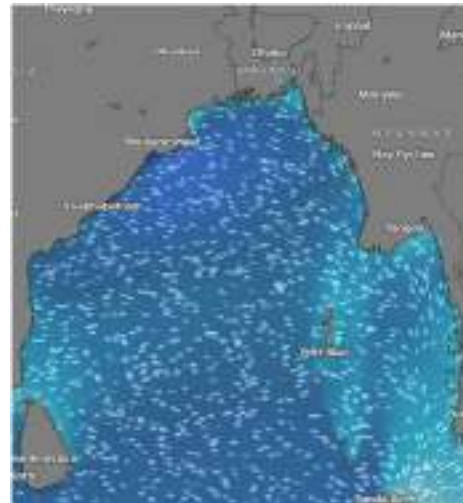
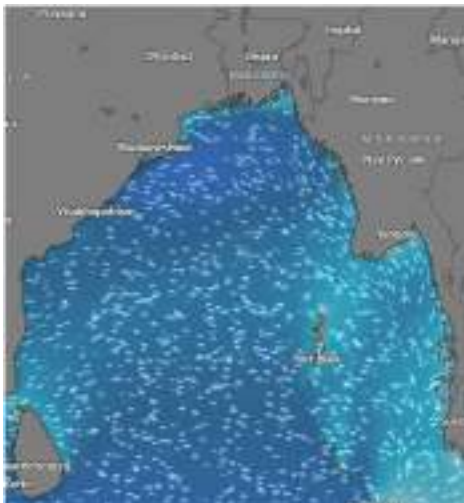
Date	Time	Air Temp (°C)		Sea Surface Temp (°C)	Baro Pressure (mbar)	Wind Direction	Wind Spd (kts)		Wave Ht (m)	Sea State	Humidity (%)	Prob of Rain (%)	Amount of Rain (mm)
		Max	Min				Gusting	Avg					
10-04-26 (Friday)	0001	31	22	23	1010	SW	15	11	1.1	3	90	09	0.0
	0600			22	1012	SW	17	13	1.1	3	92	15	0.0
	1200			27	1010	NW	14	10	1.1	3	76	11	0.0
	1800			26	1009	SW	16	12	1.1	3	88	17	0.0
11-04-26 (Saturday)	0001	31	22	23	1010	SW	17	13	1.2	3	90	08	0.0
	0600			22	1011	SW	16	12	1.2	3	92	13	0.0
	1200			27	1010	W	18	13	1.2	3	74	12	0.0
	1800			26	1009	W	14	10	1.2	3	86	16	0.0
12-04-26 (Sunday)	0001	31	22	23	1010	SW	17	13	1.2	3	89	08	0.0
	0600			22	1011	SW	16	12	1.2	3	90	13	0.0
	1200			27	1010	W	18	13	1.2	3	77	12	0.0
	1800			26	1009	W	14	10	1.2	3	85	16	0.0
13-04-26 (Monday)	0001	31	22	23	1010	SW	15	11	1.2	3	90	10	0.0
	0600			22	1011	SW	17	13	1.2	3	91	14	0.0
	1200			27	1010	SSW	16	11	1.1	3	79	13	0.0
	1800			26	1009	SW	15	10	1.1	3	88	15	0.0

10 Apr 2026

11 Apr 2026

12 Apr 2026

13 Apr 2026



Significant wave height (m)



# PREDICTED SURFACE PRESSURE FORECAST (06 to 12 Apr 2026)



06 Apr 2026



07 Apr 2026



08 Apr 2026



09 Apr 2026



10 Apr 2026



11 Apr 2026



12 Apr 2026

