



SUMMARY OF MARINE WEATHER FORECAST
COASTAL AREA OF BANGLADESH
DATE: 06 to 13 Jan 2025



Fleet forecast	Seasonal low lies over south Bay, extending its trough to Northeast Bay.
Wind direction, speed	North/North-easterly 6 kts, (Temporary gusting up to 15 kts).
Wave height & sea state	Wave height: 0.1 to 0.9 m (Sea state:1 to 3).
Sea surface temperature	19°C - 25°C (May remain nearly unchanged).
Baro pressure	1010-1016 mb.
Rainfall	Temporary partly cloudy sky over Bay of Bengal & adjoining area.
Fog	Moderate to dense fog may occur over the coastal area during midnight to morning

Outlook for 06 to 13 Jan 2025: Weather may remain dry with temporary partly cloudy sky, Night & day temperature may fall. Due to dense fog cold feelings may persists at places over the coastal area during midnight to morning.



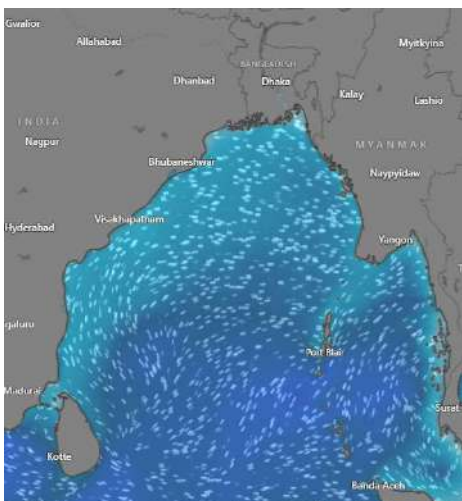
MARINE WEATHER FORECAST (06 to 13 Jan 2025)

PATENGA POINT (22° 12' N, 091° 38' E)

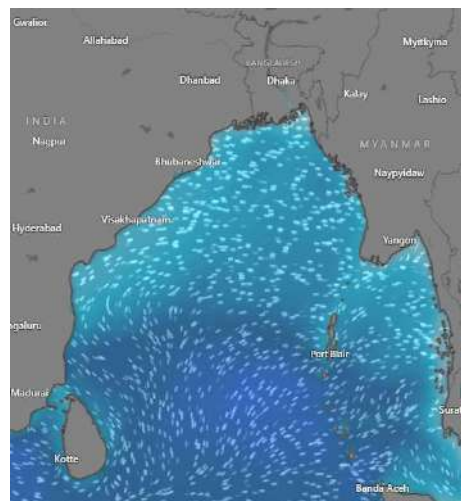


Date	Time	Air Temp (°C)		Sea Surface Temp (°C)	Baro Pressure (mbar)	Wind Direction	Wind Spd (kts)		Wave Ht (m)	Sea State	Humidity (%)	Prob of Rain (%)	Amount of Rain (mm)
		Max	Min				Gusting	Avg					
06-01-25 (Monday)	0001	26	17	20	1014	NNE	5	3	0.1	1	97	8	0.0
	0600			19	1015	NNE	5	3	0.1	1	99	9	0.0
	1200			23	1014	W	9	5	0.1	1	77	2	0.0
	1800			22	1015	W	9	4	0.1	1	87	3	0.0
07-01-25 (Tuesday)	0001	26	17	19	1014	E	6	2	0.1	1	97	8	0.0
	0600			17	1015	NNE	5	2	0.1	1	99	9	0.0
	1200			22	1013	W	10	7	0.1	1	78	2	0.0
	1800			21	1014	SW	9	3	0.1	1	85	5	0.0
08-01-25 (Wednesday)	0001	25	17	21	1014	SW	6	6	0.1	1	96	8	0.0
	0600			18	1016	SE	7	4	0.1	1	99	9	0.0
	1200			22	1012	SW	9	3	0.1	1	72	2	0.0
	1800			21	1013	W	7	2	0.1	1	80	3	0.0
09-01-25 (Thursday)	0001	25	16	21	1014	NNW	8	3	0.2	1	90	6	0.0
	0600			19	1016	NNE	10	6	0.2	1	93	7	0.0
	1200			23	1012	NW	10	6	0.2	1	61	2	0.0
	1800			22	1013	NNW	9	5	0.2	1	72	3	0.0

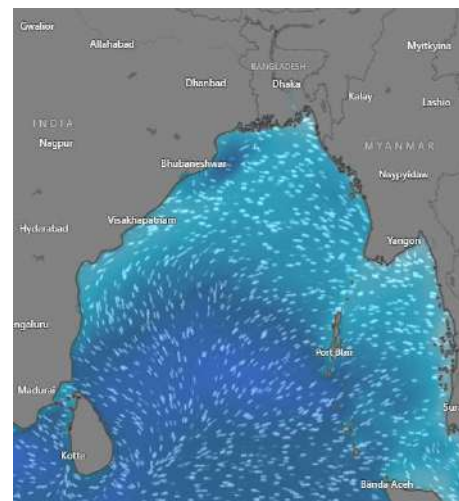
06 Jan 2025



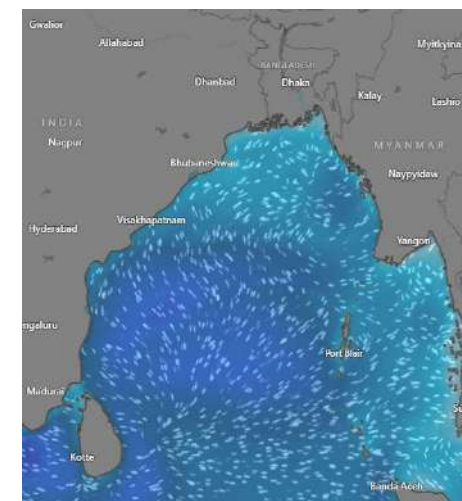
07 Jan 2025



08 Jan 2025



09 Jan 2025



Significant wave height (m)



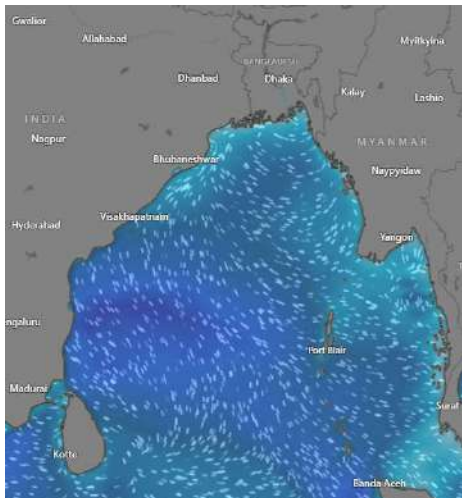
MARINE WEATHER FORECAST (06 to 13 Jan 2025)

PATENGA POINT (22° 12' N, 091° 38' E)

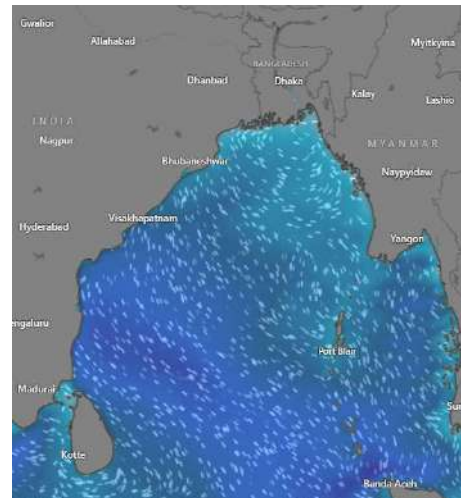


Date	Time	Air Temp (°C)		Sea Surface Temp (°C)	Baro Pressure (mbar)	Wind Direction	Wind Spd (kts)		Wave Ht (m)	Sea State	Humidity (%)	Prob of Rain (%)	Amount of Rain (mm)
		Max	Min				Gusting	Avg					
10-01-25 (Friday)	0001	26	15	20	1013	NE	9	7	0.2	2	89	8	0.0
	0600			19	1015	N	11	7	0.3	2	91	7	0.0
	1200			23	1013	NE	10	6	0.2	1	66	6	0.0
	1800			22	1014	NNE	11	6	0.2	2	77	3	0.0
11-01-25 (Saturday)	0001	26	16	19	1014	NNE	8	6	0.2	2	89	7	0.0
	0600			16	1015	NE	9	5	0.2	2	91	2	0.0
	1200			23	1013	NW	9	5	0.2	2	70	5	0.0
	1800			22	1014	NNW	10	4	0.1	1	78	6	0.0
12-01-25 (Sunday)	0001	26	16	19	1013	NE	6	3	0.1	1	88	3	0.0
	0600			16	1016	NE	6	3	0.1	1	90	5	0.0
	1200			23	1013	NNW	8	4	0.1	1	64	7	0.0
	1800			21	1014	NW	10	4	0.1	1	76	5	0.0
13-01-25 (Monday)	0001	26	16	19	1013	NW	6	3	0.1	1	88	3	0.0
	0600			16	1016	NE	7	4	0.1	1	90	5	0.0
	1200			23	1013	NNW	8	5	0.1	1	65	7	0.0
	1800			21	1014	NW	10	4	0.1	1	76	5	0.0

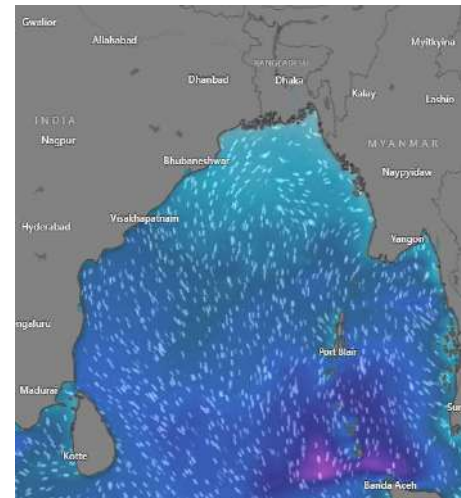
10 Jan 2025



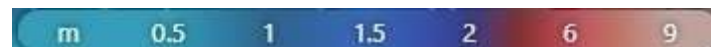
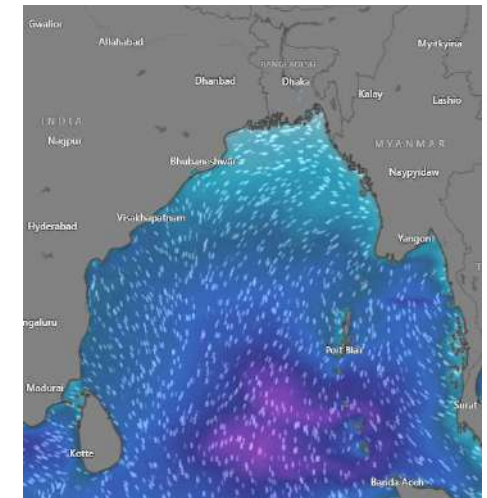
11 Jan 2025



12 Jan 2025



13 Jan 2025



Significant wave height (m)



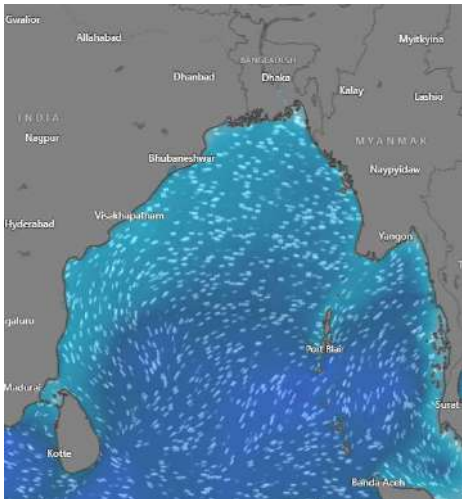
MARINE WEATHER FORECAST (06 to 13 Jan 2025)

ABEAM TO KUTUBDIA (21° 51' N, 091° 40' E)

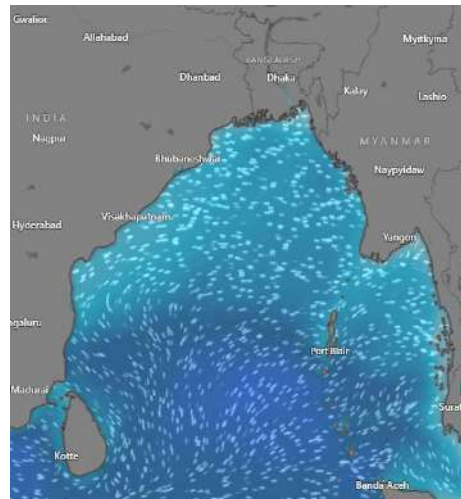


Date	Time	Air Temp (°C)		Sea Surface Temp (°C)	Baro Pressure (mbar)	Wind Direction	Wind Spd (kts)		Wave Ht (m)	Sea State	Humidity (%)	Prob of Rain (%)	Amount of Rain (mm)
		Max	Min				Gusting	Avg					
06-01-25 (Monday)	0001	24	17	22	1014	NW	7	3	0.2	2	91	7	0.0
	0600			21	1015	NNW	8	6	0.3	2	90	4	0.0
	1200			22	1013	NNW	8	7	0.3	2	67	7	0.0
	1800			21	1014	NW	8	5	0.2	2	79	5	0.0
07-01-25 (Tuesday)	0001	24	16	22	1014	NNE	7	4	0.2	2	89	2	0.0
	0600			20	1016	NNE	6	2	0.2	2	90	5	0.0
	1200			22	1013	NNW	8	6	0.2	2	72	6	0.0
	1800			21	1014	SW	6	2	0.2	2	78	5	0.0
08-01-25 (Wednesday)	0001	24	17	22	1014	W	7	6	0.2	2	87	7	0.0
	0600			21	1016	SE	6	3	0.2	2	90	4	0.0
	1200			23	1013	NE	5	4	0.2	2	65	6	0.0
	1800			21	1014	W	6	4	0.2	2	73	5	0.0
09-01-25 (Thursday)	0001	24	17	22	1014	NNW	9	6	0.3	2	87	7	0.0
	0600			21	1016	N	12	10	0.4	2	90	4	0.0
	1200			23	1013	NNW	13	9	0.3	2	65	6	0.0
	1800			21	1014	NW	10	7	0.4	2	73	5	0.0

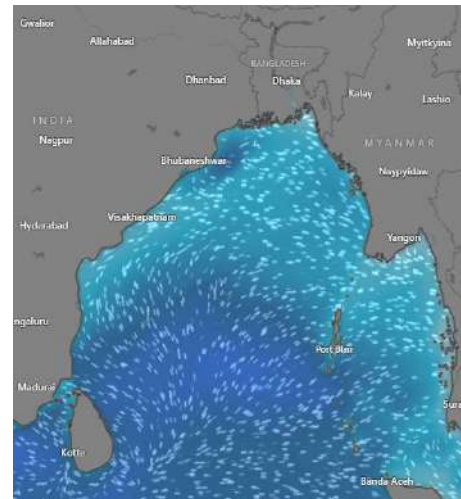
06 Jan 2025



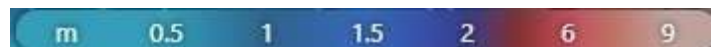
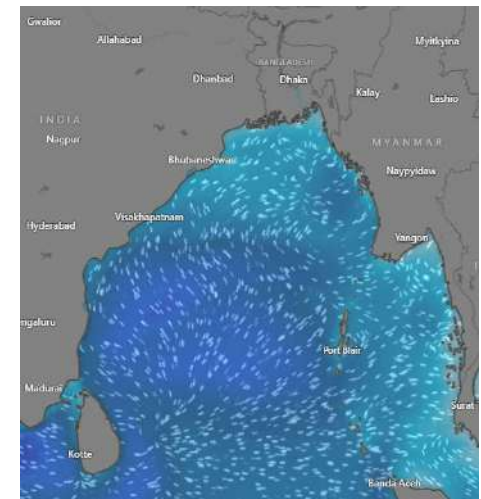
07 Jan 2025



08 Jan 2025



09 Jan 2025



Significant wave height (m)

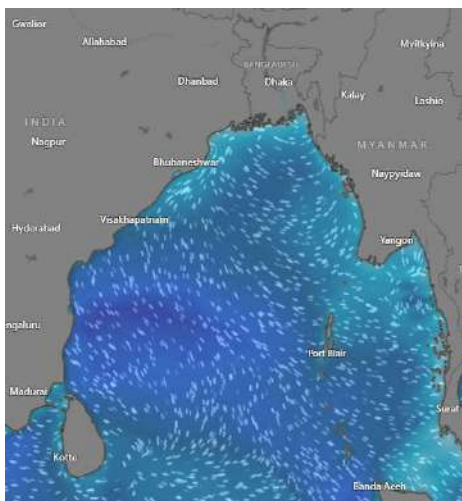


MARINE WEATHER FORECAST (05 to 12 Jan 2025) ABEAM TO KUTUBDIA (21° 51' N, 091° 40' E)

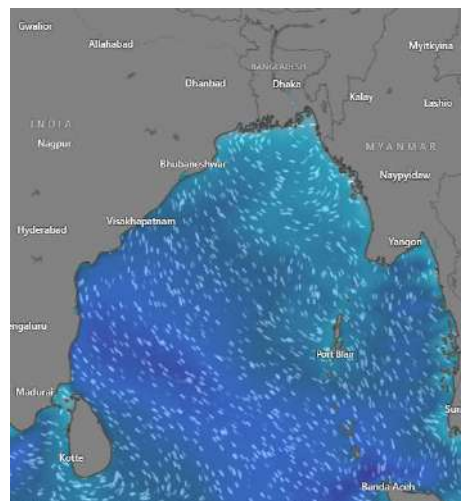


Date	Time	Air Temp (°C)		Sea Surface Temp (°C)	Baro Pressure (mbar)	Wind Direction	Wind Spd (kts)		Wave Ht (m)	Sea State	Humidity (%)	Prob of Rain (%)	Amount of Rain (mm)
		Max	Min				Gusting	Avg					
10-01-25 (Friday)	0001	24	17	22	1013	NW	10	4	0.3	3	93	8	0.0
	0600			21	1015	NNW	11	6	0.3	2	95	9	0.0
	1200			23	1013	NE	10	8	0.4	2	81	6	0.0
	1800			22	1014	NW	13	10	0.4	2	85	5	0.0
11-01-25 (Saturday)	0001	25	17	22	1013	NNW	15	11	0.4	2	92	7	0.0
	0600			20	1015	NE	13	9	0.3	2	94	8	0.0
	1200			23	1012	NW	13	10	0.4	2	80	5	0.0
	1800			22	1013	NW	11	9	0.3	2	84	6	0.0
12-01-25 (Sunday)	0001	25	18	22	1013	NNE	13	10	0.4	2	90	7	0.0
	0600			20	1015	N	15	8	0.4	2	91	8	0.0
	1200			23	1013	NNW	12	9	0.3	2	74	2	0.0
	1800			21	1014	NW	10	8	0.4	2	81	4	0.0
13-01-25 (Monday)	0001	25	18	22	1013	NNE	12	10	0.3	2	86	6	0.0
	0600			20	1015	N	13	8	0.3	2	88	7	0.0
	1200			23	1013	NNW	12	9	0.3	2	66	2	0.0
	1800			21	1014	NW	10	7	0.4	2	71	3	0.0

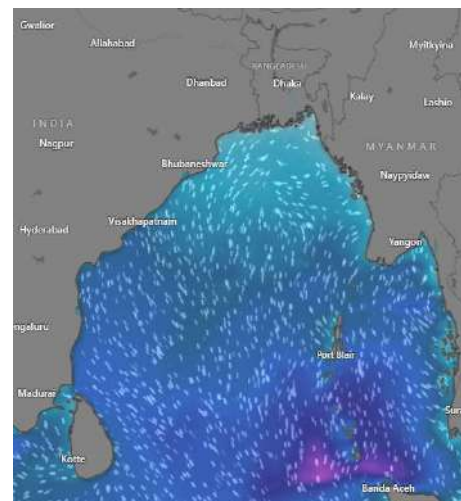
10 Jan 2025



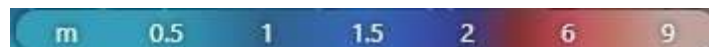
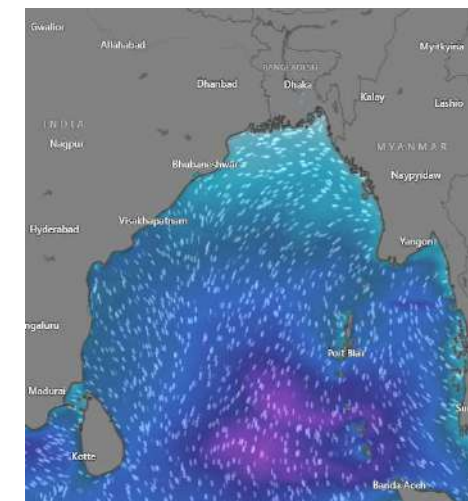
11 Jan 2025



12 Jan 2025



13 Jan 2025



Significant wave height (m)

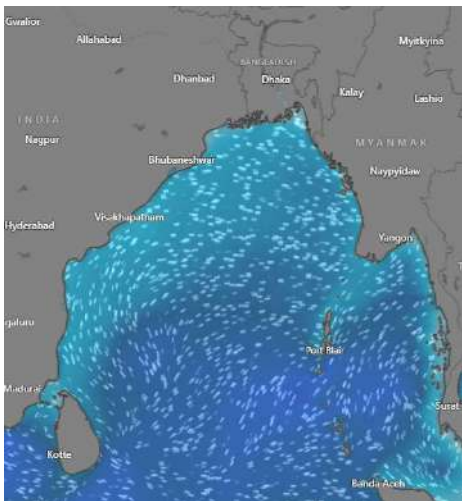


MARINE WEATHER FORECAST (06 to 13 Jan 2025) ABEAM TO ELEPHANT POINT (21° 11' N, 091° 52' E)

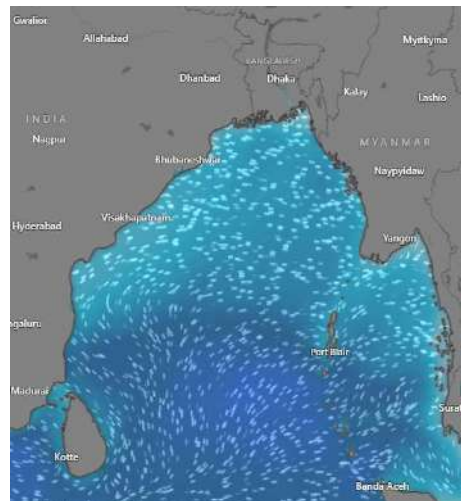


Date	Time	Air Temp (°C)		Sea Surface Temp (°C)	Baro Pressure (mbar)	Wind Direction	Wind Spd (kts)		Wave Ht (m)	Sea State	Humidity (%)	Prob of Rain (%)	Amount of Rain (mm)
		Max	Min				Gusting	Avg					
06-01-25 (Monday)	0001	25	17	23	1013	N	10	6	0.4	2	98	8	0.0
	0600			22	1015	N	9	8	0.4	2	97	9	0.0
	1200			23	1012	NNW	10	7	0.5	2	75	3	0.0
	1800			22	1014	NNW	9	8	0.5	2	87	6	0.0
07-01-25 (Tuesday)	0001	25	17	23	1013	NNW	9	5	0.5	2	96	8	0.0
	0600			22	1015	NW	10	6	0.5	2	95	9	0.0
	1200			23	1012	NNW	9	5	0.5	2	72	5	0.0
	1800			22	1013	N	11	4	0.5	2	85	5	0.0
08-01-25 (Wednesday)	0001	25	17	22	1013	SW	6	4	0.4	2	92	8	0.0
	0600			21	1016	NNW	10	6	0.5	2	94	8	0.0
	1200			23	1013	N	8	2	0.4	2	66	3	0.0
	1800			22	1014	NNW	9	6	0.4	2	81	5	0.0
09-01-25 (Thursday)	0001	25	16	23	1013	NNW	10	8	0.4	2	92	7	0.0
	0600			22	1016	NNE	14	10	0.5	2	93	6	0.0
	1200			23	1013	NNW	13	9	0.5	2	59	3	0.0
	1800			22	1014	NNW	15	10	0.6	3	79	2	0.0

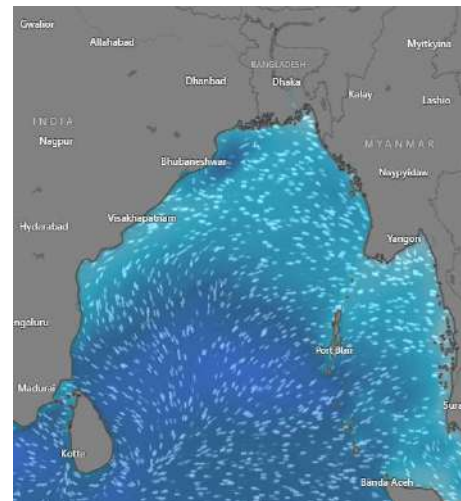
06 Jan 2025



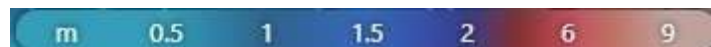
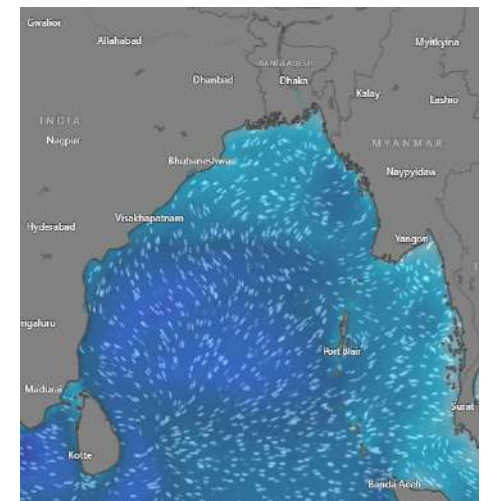
07 Jan 2025



08 Jan 2025



09 Jan 2025



Significant wave height (m)

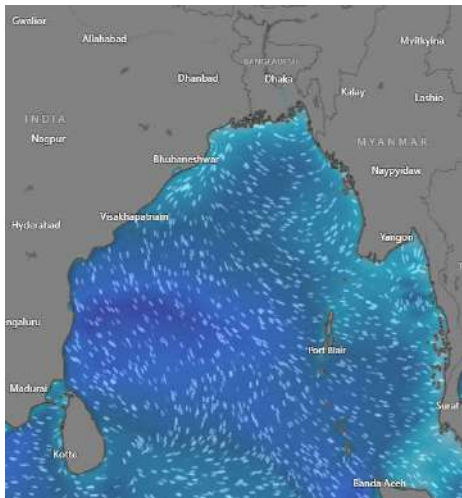


MARINE WEATHER FORECAST (06 to 13 Jan 2025) ABEAM TO ELEPHANT POINT (21° 11' N, 091° 52' E)

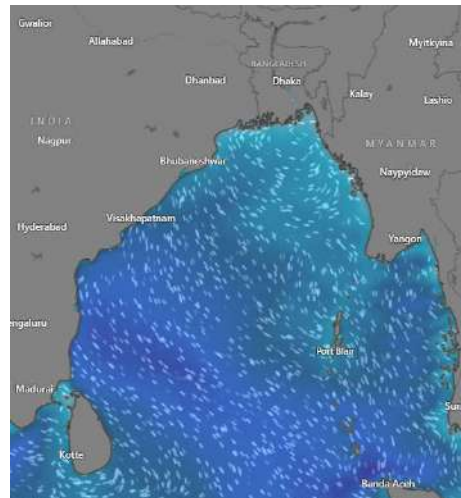


Date	Time	Air Temp (°C)		Sea Surface Temp (°C)	Baro Pressure (mbar)	Wind Direction	Wind Spd (kts)		Wave Ht (m)	Sea State	Humidity (%)	Prob of Rain (%)	Amount of Rain (mm)
		Max	Min				Gusting	Avg					
10-01-25 (Friday)	0001	26	16	23	1013	NW	15	12	0.6	2	90	8	0.0
	0600			21	1015	NE	12	12	0.6	2	92	6	0.0
	1200			24	1013	N	13	13	0.6	2	71	3	0.0
	1800			22	1014	NW	16	12	0.6	2	87	5	0.0
11-01-25 (Saturday)	0001	27	17	23	1013	NNW	15	10	0.5	2	91	7	0.0
	0600			21	1015	NW	12	8	0.4	2	93	6	0.0
	1200			24	1013	NW	12	9	0.4	2	78	3	0.0
	1800			22	1014	NE	9	7	0.4	2	86	5	0.0
12-01-25 (Sunday)	0001	27	17	23	1012	NNW	12	7	0.3	2	88	6	0.0
	0600			21	1014	N	9	7	0.3	2	90	8	0.0
	1200			24	1012	NNW	10	7	0.3	2	76	2	0.0
	1800			21	1013	NW	11	6	0.3	2	81	5	0.0
13-01-25 (Monday)	0001	27	17	23	1012	NNW	8	6	0.3	2	88	7	0.0
	0600			22	1014	N	11	8	0.3	2	90	8	0.0
	1200			24	1012	NNW	11	5	0.3	2	76	3	0.0
	1800			22	1013	NW	11	5	0.3	2	81	6	0.0

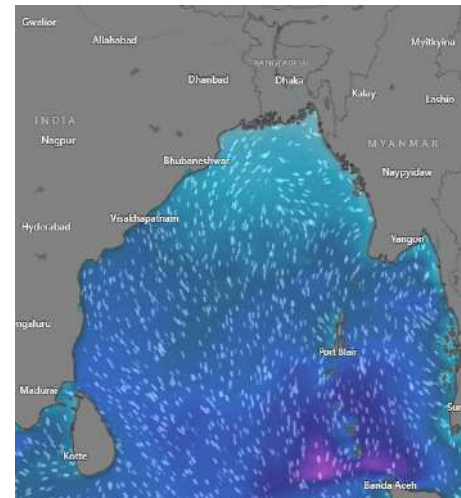
10 Jan 2025



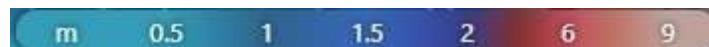
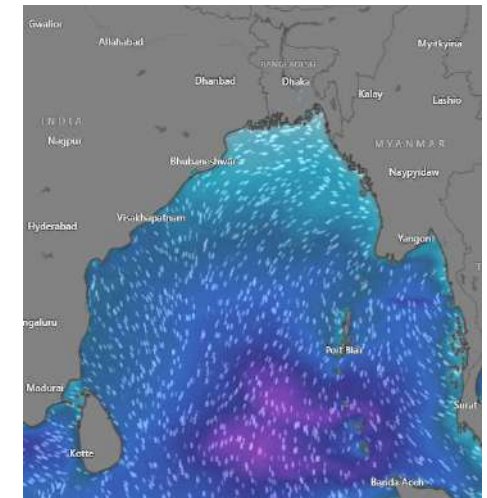
11 Jan 2025



12 Jan 2025



13 Jan 2025



Significant wave height (m)

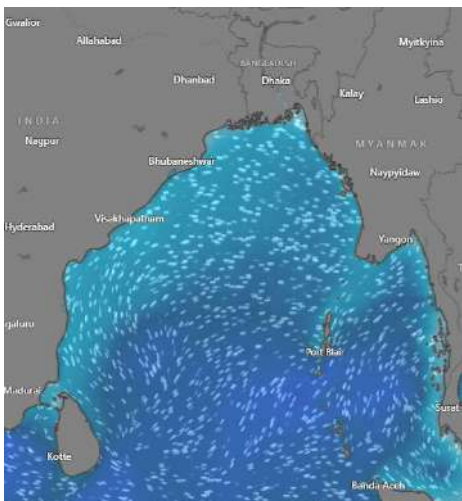


MARINE WEATHER FORECAST (06 to 13 Jan 2025) ABEAM TO ST. MARTIN'S LIGHT HOUSE (20° 37' N, 092° 08' E)

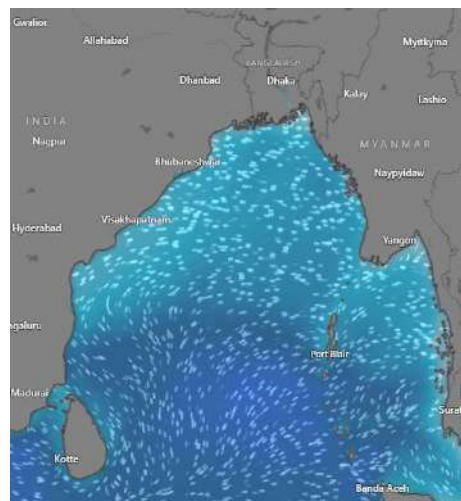


Date	Time	Air Temp (°C)		Sea Surface Temp (°C)	Baro Pressure (mbar)	Wind Direction	Wind Spd (kts)		Wave Ht (m)	Sea State	Humidity (%)	Prob of Rain (%)	Amount of Rain (mm)
		Max	Min				Gusting	Avg					
06-01-25 (Monday)	0001	25	18	23	1014	NW	13	9	0.6	3	89	8	0.0
	0600			24	1015	NNW	12	7	0.6	3	91	7	0.0
	1200			23	1013	NW	9	4	0.6	3	67	6	0.0
	1800			22	1014	W	10	7	0.6	3	83	8	0.0
07-01-25 (Tuesday)	0001	26	19	24	1014	NW	13	9	0.6	3	89	7	0.0
	0600			23	1015	NNW	12	10	0.6	3	91	8	0.0
	1200			23	1013	NW	8	5	0.6	3	68	7	0.0
	1800			22	1014	NW	11	9	0.6	3	80	6	0.0
08-01-25 (Wednesday)	0001	26	19	24	1014	NW	9	5	0.5	2	89	5	0.0
	0600			23	1015	NNW	11	8	0.5	2	91	3	0.0
	1200			23	1012	NW	12	9	0.5	2	67	4	0.0
	1800			22	1013	NNW	14	11	0.6	3	80	5	0.0
09-01-25 (Thursday)	0001	26	19	24	1014	NW	13	11	0.6	3	89	6	0.0
	0600			23	1015	NNW	15	13	0.6	3	90	5	0.0
	1200			23	1013	NW	14	12	0.6	3	67	2	0.0
	1800			22	1014	NNW	15	13	0.6	3	80	3	0.0

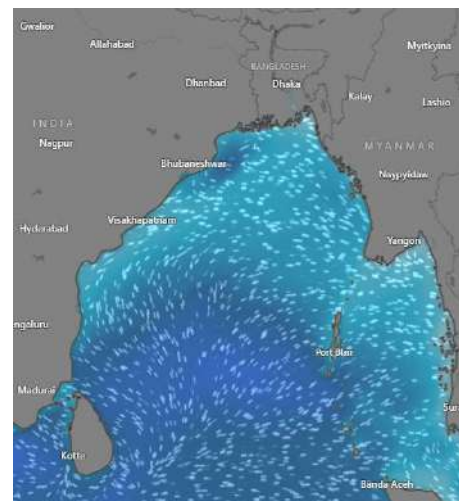
06 Jan 2025



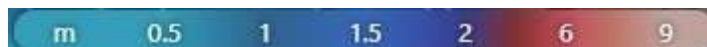
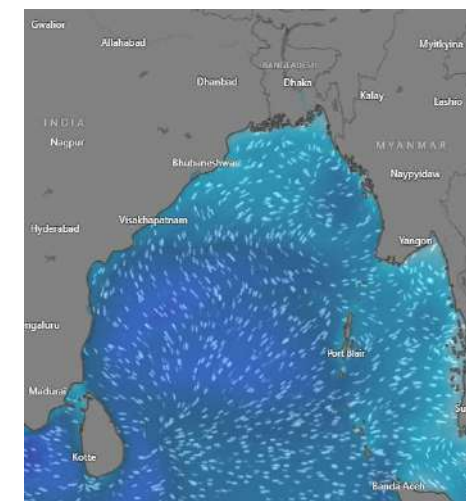
07 Jan 2025



08 Jan 2025



09 Jan 2025



Significant wave height (m)

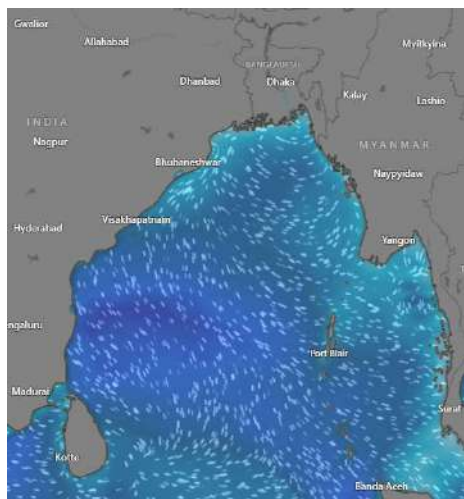


MARINE WEATHER FORECAST (06 to 13 Jan 2025) ABEAM TO ST. MARTIN'S LIGHT HOUSE (20° 37' N, 092° 08' E)

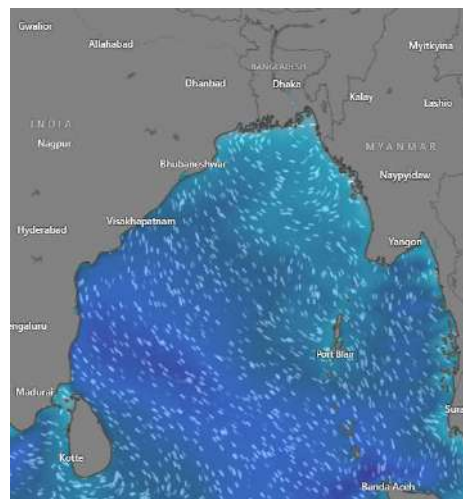


Date	Time	Air Temp (°C)		Sea Surface Temp (°C)	Baro Pressure (mbar)	Wind Direction	Wind Spd (kts)		Wave Ht (m)	Sea State	Humidity (%)	Prob of Rain (%)	Amount of Rain (mm)
		Max	Min				Gusting	Avg					
10-01-25 (Friday)	0001	26	18	24	1012	NW	12	10	0.6	3	91	6	0.0
	0600			23	1014	NNW	11	8	0.6	3	93	5	0.0
	1200			25	1012	N	10	7	0.6	3	78	3	0.0
	1800			24	1013	NW	13	9	0.6	3	80	5	0.0
11-01-25 (Saturday)	0001	27	18	24	1012	NNW	14	11	0.6	3	90	4	0.0
	0600			23	1014	NW	12	12	0.6	3	91	6	0.0
	1200			25	1012	NNW	15	10	0.6	3	81	5	0.0
	1800			24	1013	NW	14	11	0.6	3	85	4	0.0
12-01-25 (Sunday)	0001	27	18	24	1012	NNW	13	10	0.6	3	89	6	0.0
	0600			23	1014	N	13	12	0.6	3	91	6	0.0
	1200			25	1012	NNW	15	12	0.6	3	80	2	0.0
	1800			24	1013	NW	14	13	0.6	3	87	3	0.0
13-01-25 (Monday)	0001	27	18	24	1012	NNW	13	10	0.6	3	89	6	0.0
	0600			23	1014	N	13	12	0.6	3	91	6	0.0
	1200			25	1012	NNW	15	12	0.6	3	80	2	0.0
	1800			24	1013	NW	14	13	0.6	3	87	3	0.0

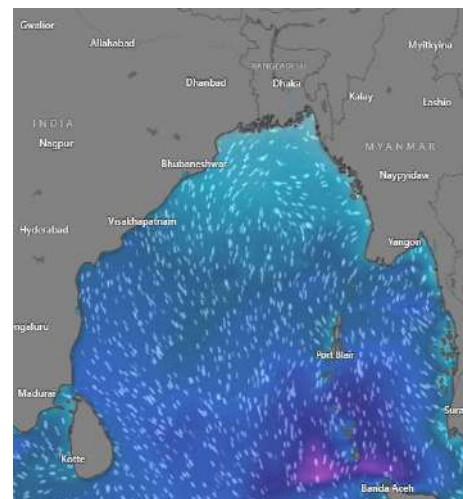
10 Jan 2025



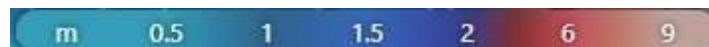
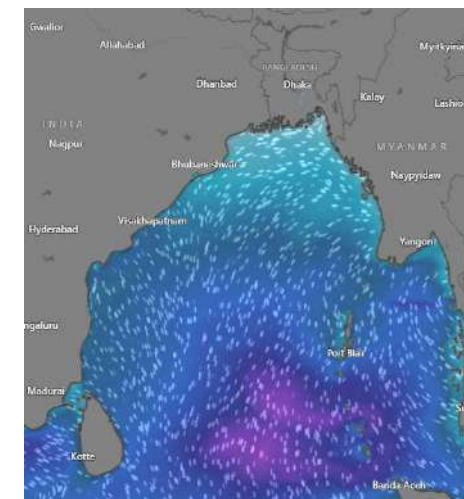
11 Jan 2025



12 Jan 2025



13 Jan 2025



Significant wave height (m)



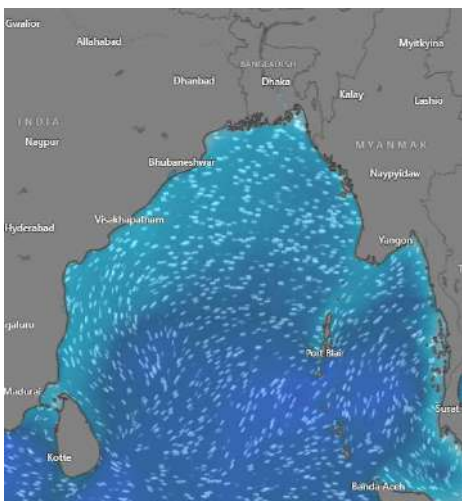
MARINE WEATHER FORECAST (06 to 13 Jan 2025)

PAYRA FAIRWAY (21° 22' N, 090° 6' E)

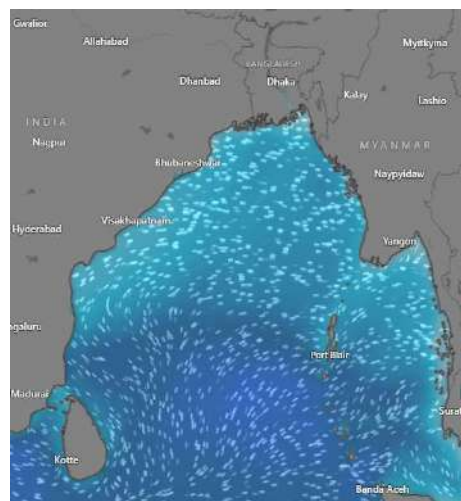


Date	Time	Air Temp (°C)		Sea Surface Temp (°C)	Baro Pressure (mbar)	Wind Direction	Wind Spd (kts)		Wave Ht (m)	Sea State	Humidity (%)	Prob of Rain (%)	Amount of Rain (mm)
		Max	Min				Gusting	Avg					
06-01-25 (Monday)	0001	25	17	22	1013	NNW	8	5	0.6	3	89	7	0.0
	0600			21	1015	NNE	7	3	0.6	3	90	8	0.0
	1200			23	1012	NNE	8	3	0.6	3	64	5	0.0
	1800			21	1014	NW	5	2	0.6	3	71	6	0.0
07-01-25 (Tuesday)	0001	25	17	22	1013	NW	5	2	0.6	3	88	4	0.0
	0600			21	1015	NE	6	4	0.6	3	92	5	0.0
	1200			23	1011	NNW	8	4	0.5	2	64	2	0.0
	1800			21	1012	NW	9	6	0.5	2	83	4	0.0
08-01-25 (Wednesday)	0001	25	17	23	1013	NE	7	3	0.5	2	89	6	0.0
	0600			21	1015	NE	8	6	0.5	2	92	7	0.0
	1200			23	1011	NNW	6	3	0.4	2	64	5	0.0
	1800			21	1012	NW	6	2	0.4	2	81	6	0.0
09-01-25 (Thursday)	0001	25	17	23	1013	NE	13	10	0.5	2	87	7	0.0
	0600			21	1015	NE	10	8	0.5	2	90	5	0.0
	1200			23	1011	NNW	9	5	0.4	2	64	6	0.0
	1800			21	1012	NW	8	7	0.5	2	82	4	0.0

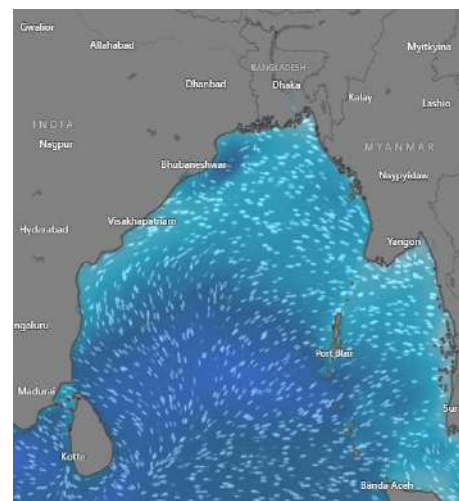
06 Jan 2025



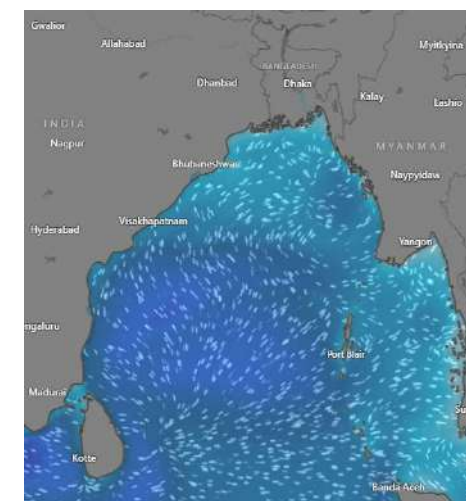
07 Jan 2025



08 Jan 2025



09 Jan 2025



Significant wave height (m)



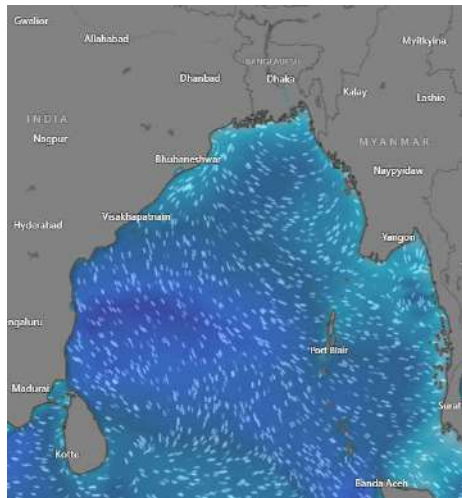
MARINE WEATHER FORECAST (06 to 13 Jan 2025)

PAYRA FAIRWAY (21° 22' N, 090° 6' E)

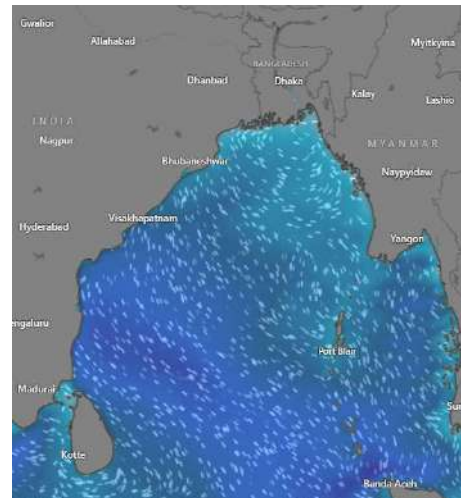


Date	Time	Air Temp (°C)		Sea Surface Temp (°C)	Baro Pressure (mbar)	Wind Direction	Wind Spd (kts)		Wave Ht (m)	Sea State	Humidity (%)	Prob of Rain (%)	Amount of Rain (mm)
		Max	Min				Gusting	Avg					
10-01-25 (Friday)	0001	25	16	23	1012	NW	10	8	0.5	2	90	7	0.0
	0600			23	1014	N	10	7	0.5	2	91	3	0.0
	1200			23	1012	NNW	12	9	0.5	2	78	5	0.0
	1800			22	1013	NW	13	10	0.5	2	80	4	0.0
11-01-25 (Saturday)	0001	25	16	23	1012	NNW	14	11	0.5	2	90	6	0.0
	0600			23	1014	NW	14	12	0.6	3	92	6	0.0
	1200			23	1012	NNW	13	11	0.6	3	68	2	0.0
	1800			22	1013	NW	15	13	0.6	3	78	3	0.0
12-01-25 (Sunday)	0001	25	16	23	1012	NW	13	10	0.6	3	90	6	0.0
	0600			23	1015	NW	12	9	0.6	3	92	6	0.0
	1200			23	1012	NNW	10	8	0.6	3	68	2	0.0
	1800			22	1013	NW	12	10	0.6	3	81	3	0.0
13-01-25 (Monday)	0001	25	16	23	1012	NW	13	10	0.6	3	90	6	0.0
	0600			23	1015	NW	12	9	0.6	3	92	6	0.0
	1200			23	1012	NNW	10	8	0.6	3	68	2	0.0
	1800			22	1013	NW	12	10	0.6	3	81	3	0.0

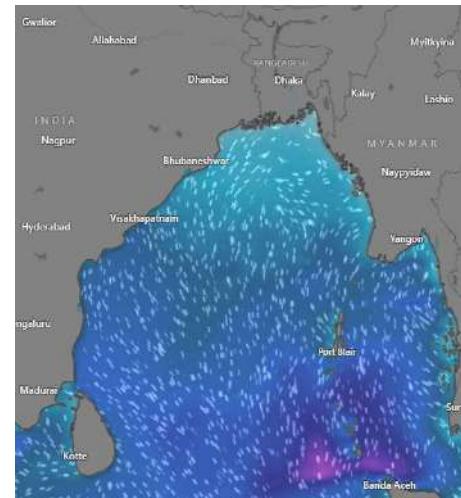
10 Jan 2025



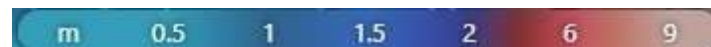
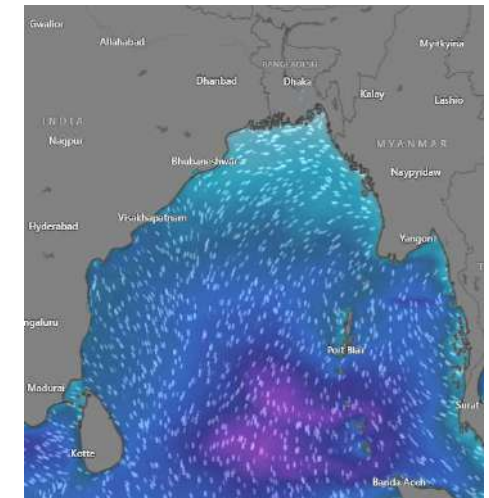
11 Jan 2025



12 Jan 2025



13 Jan 2025



Significant wave height (m)



MARINE WEATHER FORECAST (06 to 13 Jan 2025)

MONGLA FAIRWAY (21° 26' N, 089° 34' E)

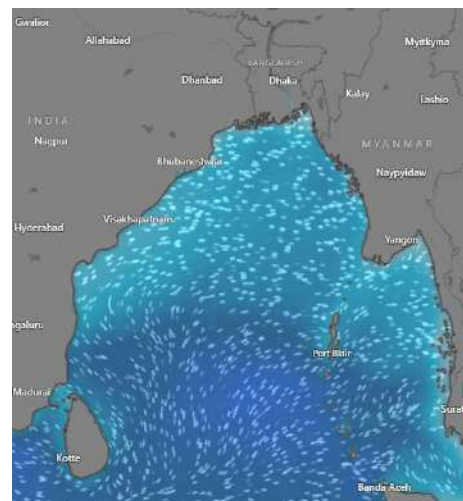


Date	Time	Air Temp (°C)		Sea Surface Temp (°C)	Baro Pressure (mbar)	Wind Direction	Wind Spd (kts)		Wave Ht (m)	Sea State	Humidity (%)	Prob of Rain (%)	Amount of Rain (mm)
		Max	Min				Gusting	Avg					
06-01-25 (Monday)	0001	25	15	22	1013	NW	7	5	0.6	3	89	8	0.0
	0600			21	1015	NNE	5	2	0.6	3	92	6	0.0
	1200			22	1013	NNE	9	5	0.6	3	67	7	0.0
	1800			21	1014	NNE	7	4	0.6	3	76	5	0.0
07-01-25 (Tuesday)	0001	26	16	23	1013	NNW	6	3	0.6	3	89	7	0.0
	0600			22	1015	NNW	7	4	0.6	3	91	6	0.0
	1200			24	1013	W	12	8	0.6	3	63	8	0.0
	1800			23	1014	NNW	10	7	0.6	3	69	7	0.0
08-01-25 (Wednesday)	0001	26	16	23	1013	NW	9	4	0.6	3	88	5	0.0
	0600			22	1015	NNW	13	9	0.6	3	90	3	0.0
	1200			24	1013	N	12	9	0.6	3	68	5	0.0
	1800			23	1014	NE	7	5	0.5	2	76	6	0.0
09-01-25 (Thursday)	0001	26	16	23	1013	NNW	5	3	0.4	2	87	4	0.0
	0600			22	1015	NNE	13	10	0.6	3	91	5	0.0
	1200			24	1013	NNE	12	8	0.6	3	67	6	0.0
	1800			22	1014	NNE	8	4	0.5	2	76	3	0.0

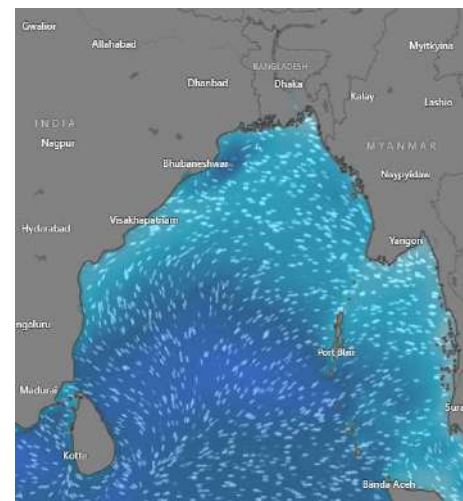
06 Jan 2025



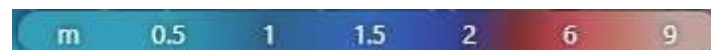
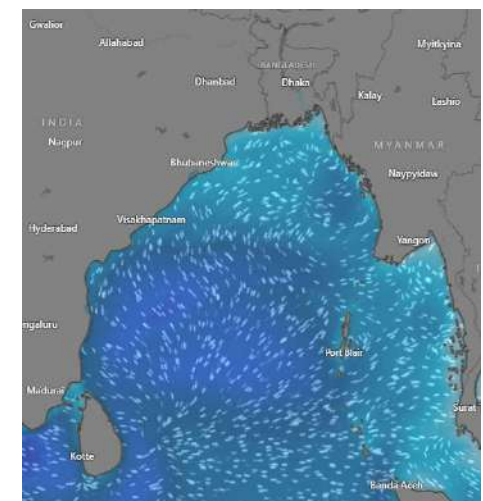
07 Jan 2025



08 Jan 2025



09 Jan 2025



Significant wave height (m)



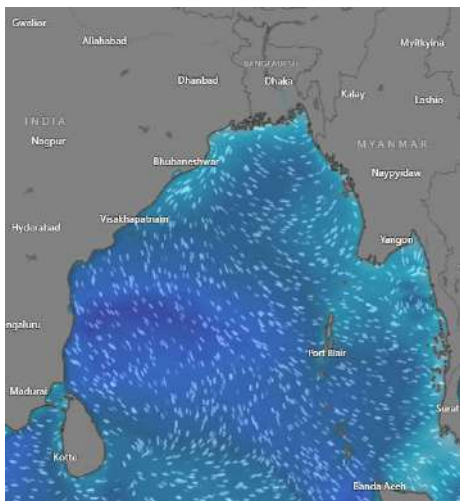
MARINE WEATHER FORECAST (06 to 13 Jan 2025)

MONGLA FAIRWAY (21° 26' N, 089° 34' E)

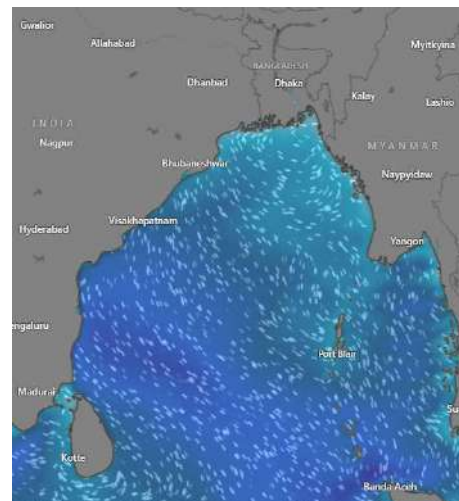


Date	Time	Air Temp (°C)		Sea Surface Temp (°C)	Baro Pressure (mbar)	Wind Direction	Wind Spd (kts)		Wave Ht (m)	Sea State	Humidity (%)	Prob of Rain (%)	Amount of Rain (mm)
		Max	Min				Gusting	Avg					
10-01-25 (Friday)	0001	25	15	24	1013	NE	10	8	0.4	3	91	7	0.0
	0600			23	1015	NNE	14	13	0.7	3	91	5	0.0
	1200			24	1012	NNE	13	8	0.7	3	76	6	0.0
	1800			23	1013	NE	10	8	0.5	2	80	4	0.0
11-01-25 (Saturday)	0001	26	15	24	1014	NE	10	9	0.5	2	89	3	0.0
	0600			23	1015	NE	13	11	0.6	3	90	5	0.0
	1200			24	1013	NNE	14	11	0.6	3	68	4	0.0
	1800			23	1014	NNE	9	5	0.4	2	78	6	0.0
12-01-25 (Sunday)	0001	26	15	24	1012	NE	9	7	0.3	2	89	5	0.0
	0600			23	1015	NE	10	7	0.4	2	90	4	0.0
	1200			24	1012	NNE	9	4	0.3	2	76	7	0.0
	1800			23	1013	NNE	8	4	0.3	2	80	6	0.0
13-01-25 (Monday)	0001	26	15	24	1012	NE	9	5	0.7	3	89	5	0.0
	0600			23	1015	NE	7	5	0.5	2	90	5	0.0
	1200			24	1012	NNE	10	7	0.6	3	76	3	0.0
	1800			23	1013	NNE	8	5	0.6	3	80	4	0.0

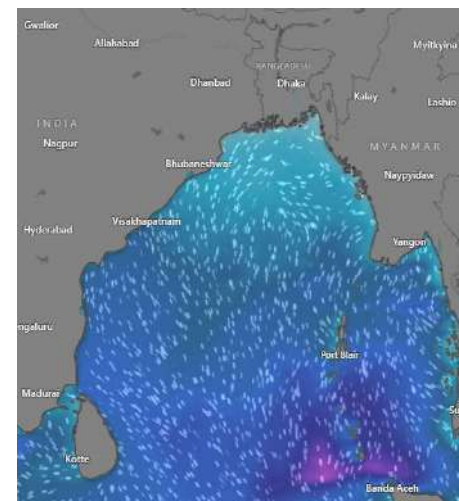
10 Jan 2025



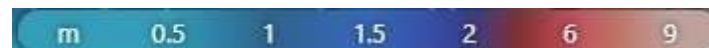
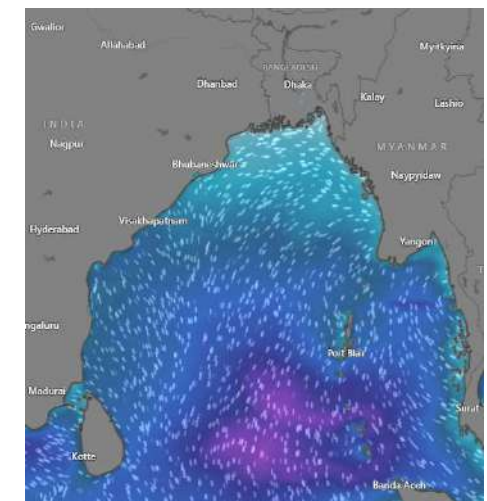
11 Jan 2025



12 Jan 2025



13 Jan 2025



Significant wave height (m)



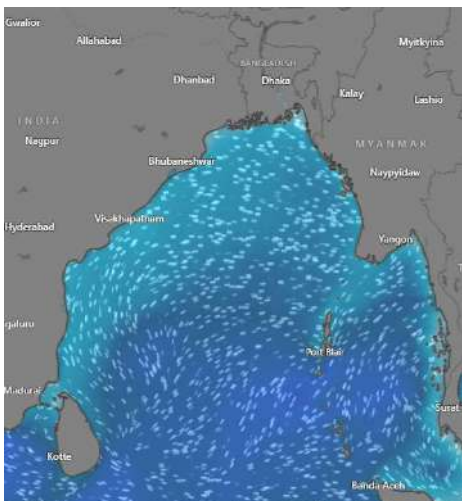
MARINE WEATHER FORECAST (06 to 13 Jan 2025)

OUTER EEZ (18° 48' N, 090° 30' E)

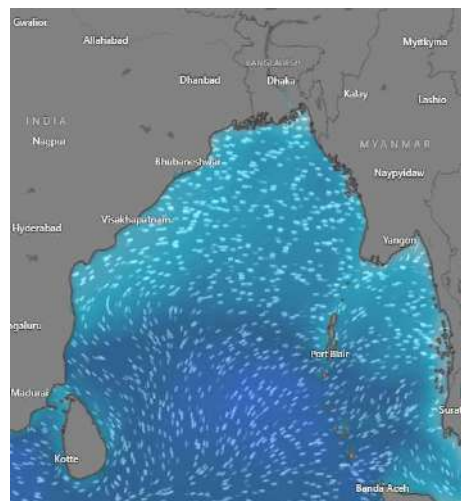


Date	Time	Air Temp (°C)		Sea Surface Temp (°C)	Baro Pressure (mbar)	Wind Direction	Wind Spd (kts)		Wave Ht (m)	Sea State	Humidity (%)	Prob of Rain (%)	Amount of Rain (mm)
		Max	Min				Gusting	Avg					
06-01-25 (Monday)	0001	26	18	25	1015	NNE	6	4	0.7	3	91	7	0.0
	0600			24	1016	NE	7	5	0.7	3	93	6	0.0
	1200			25	1013	NE	5	3	0.7	3	76	5	0.0
	1800			25	1014	NE	5	2	0.7	3	80	4	0.0
07-01-25 (Tuesday)	0001	26	18	25	1014	NNW	7	4	0.7	3	90	8	0.0
	0600			24	1016	NW	7	4	0.6	3	93	7	0.0
	1200			25	1013	NW	8	6	0.6	3	75	2	0.0
	1800			24	1014	NW	9	3	0.6	3	81	3	0.0
08-01-25 (Wednesday)	0001	26	18	25	1014	NNW	8	6	0.6	3	92	5	0.0
	0600			24	1015	NW	10	5	0.6	3	94	4	0.0
	1200			25	1013	NW	7	8	0.5	3	77	4	0.0
	1800			24	1014	NNW	9	5	0.6	3	82	5	0.0
09-01-25 (Thursday)	0001	26	18	25	1013	NNE	11	8	0.6	3	93	6	0.0
	0600			24	1015	NE	13	10	0.6	3	90	5	0.0
	1200			25	1013	NNE	12	9	0.7	3	76	7	0.0
	1800			24	1014	NNE	11	8	0.7	3	82	5	0.0

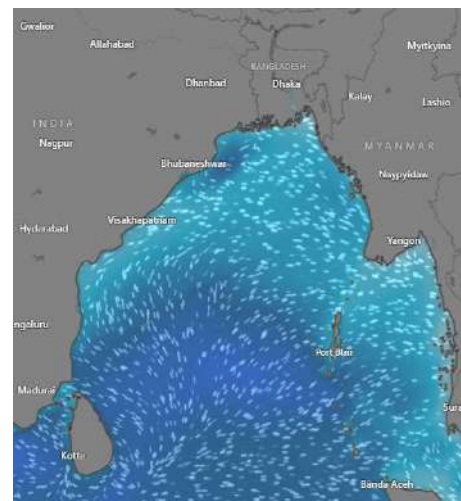
06 Jan 2025



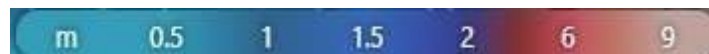
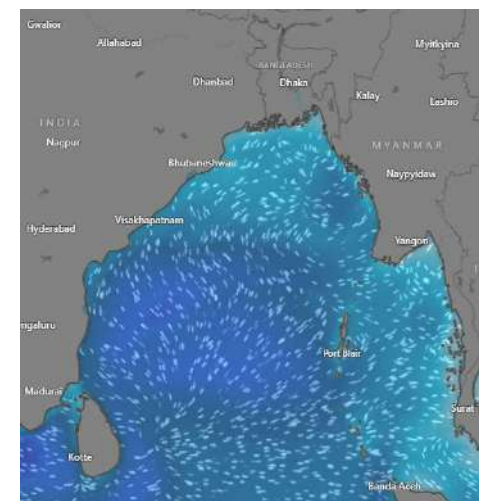
07 Jan 2025



08 Jan 2025



09 Jan 2025



Significant wave height (m)



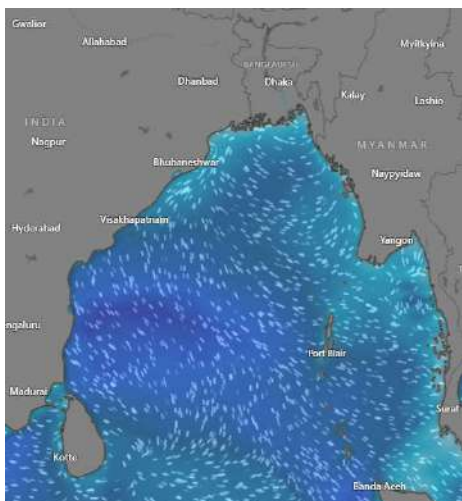
MARINE WEATHER FORECAST (06 to 13 Jan 2025)

OUTER EEZ (18° 48' N, 090° 30' E)

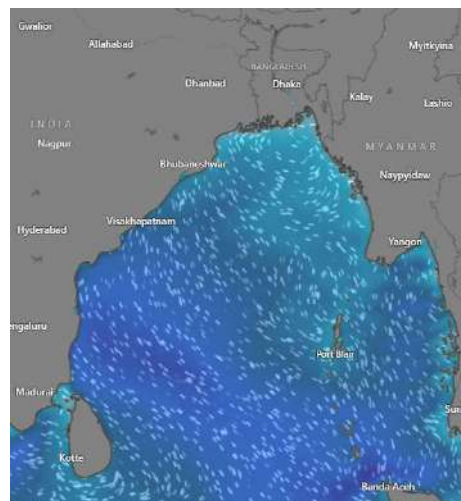


Date	Time	Air Temp (°C)		Sea Surface Temp (°C)	Baro Pressure (mbar)	Wind Direction	Wind Spd (kts)		Wave Ht (m)	Sea State	Humidity (%)	Prob of Rain (%)	Amount of Rain (mm)
		Max	Min				Gusting	Avg					
10-01-25 (Friday)	0001	26	18	24	1015	NE	13	9	0.7	3	91	7	0.0
	0600			23	1016	NNE	14	12	0.8	3	93	6	0.0
	1200			24	1014	NE	15	12	0.9	3	67	3	0.0
	1800			23	1015	NNE	13	10	0.9	3	76	5	0.0
11-01-25 (Saturday)	0001	26	17	24	1015	NE	12	8	0.8	3	90	4	0.0
	0600			23	1016	NNE	10	6	0.7	3	92	6	0.0
	1200			24	1014	NE	8	5	0.7	3	71	5	0.0
	1800			23	1015	NNE	11	7	0.6	3	81	7	0.0
12-01-25 (Sunday)	0001	26	17	24	1015	NE	9	5	0.5	3	89	5	0.0
	0600			23	1016	NNE	12	8	0.5	3	91	6	0.0
	1200			25	1014	NE	13	10	0.5	3	66	5	0.0
	1800			24	1015	NNE	10	7	0.5	3	76	4	0.0
13-01-25 (Monday)	0001	26	17	24	1014	NE	9	5	0.5	3	89	6	0.0
	0600			23	1015	NNE	8	6	0.6	3	91	7	0.0
	1200			25	1013	NW	11	7	0.6	3	66	5	0.0
	1800			24	1014	NE	12	8	0.6	3	75	4	0.0

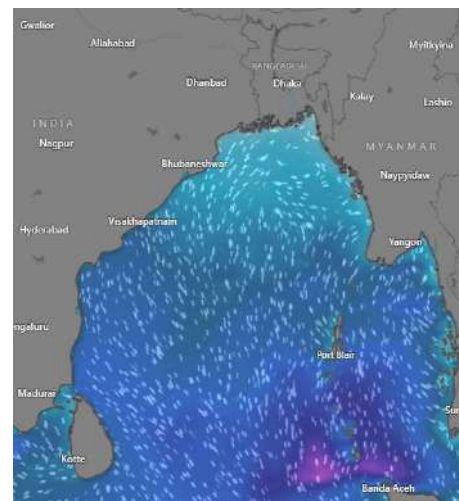
10 Jan 2025



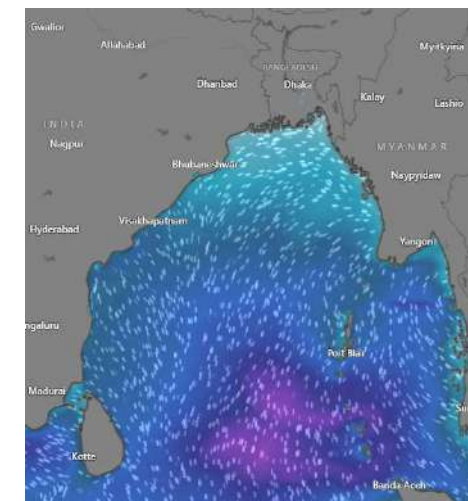
11 Jan 2025



12 Jan 2025



13 Jan 2025



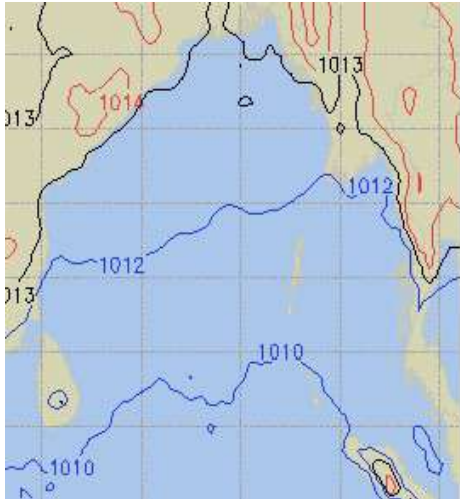
Significant wave height (m)



PREDICTED SURFACE PRESSURE FORECAST (06 to 12 Jan 2025)



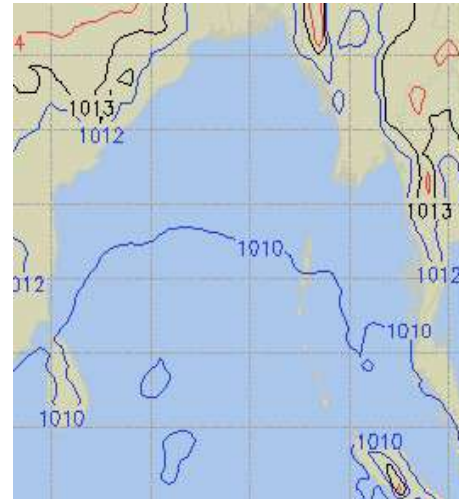
06 Jan 2024



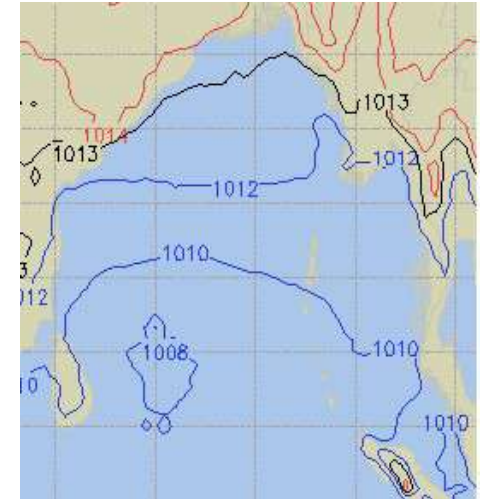
07 Jan 2024



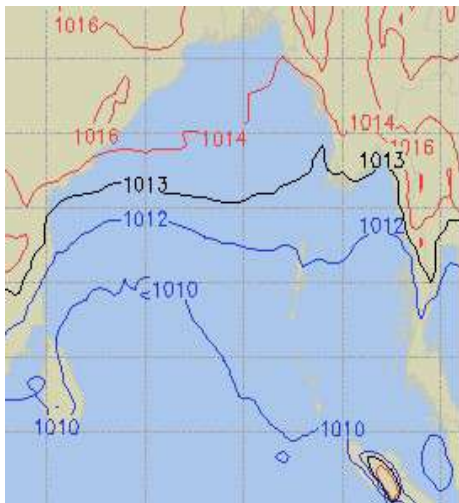
08 Jan 2025



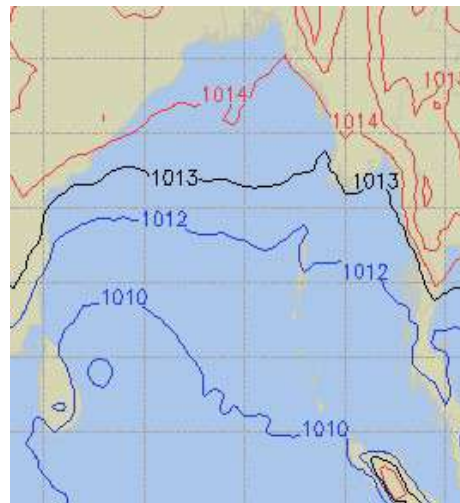
09 Jan 2025



10 Jan 2025



11 Jan 2025



12 Jan 2025

