



SUMMARY OF MARINE WEATHER FORECAST
COASTAL AREA OF BANGLADESH
DATE: 05 to 12 Oct 2024



Fleet forecast	A low pressure area has formed over North Bay of Bengal and adjoining coastal areas of Bangladesh. Under its influence deep convection is taking places over North Bay and adjoining coastal areas of Bangladesh. Monsoon is moderate to strong elsewhere over North Bay.
Wind direction, speed	South/south-westerly 7 kts, (Temporary gusting up to 22 kts).
Wave height & sea state	Wave height: 0.1 to 1.4 m (Sea state:1 to 4).
Sea surface temperature	26°C - 29°C (May remain nearly unchanged).
Baro pressure	1007- 1013 mb
Rainfall	Light to moderate rain/thunder showers over Bay of Bengal & adjoining area.

Outlook for 05 to 12 Oct 2024: Rainfall activity may continue

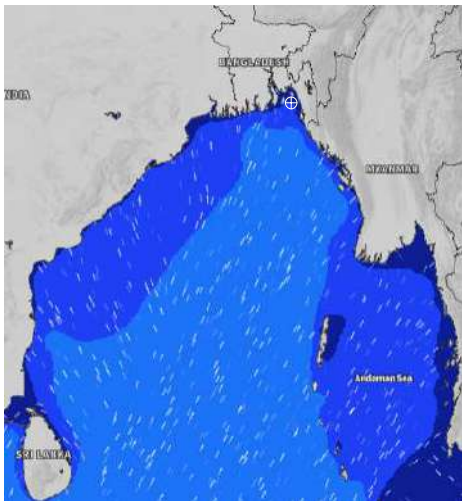


MARINE WEATHER FORECAST (05 to 12 Oct 2024) NEAR AUTHORITY BUOY (22° 12' N, 091° 38' E)

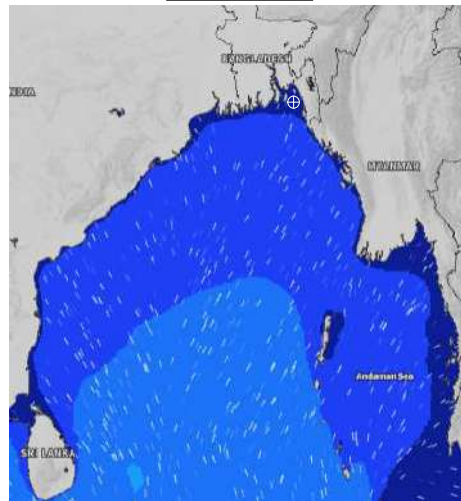


Date	Time	Air Temp (°C)		Sea Surface Temp (°C)	Baro Pressure (mbar)	Wind Direction	Wind Spd (kts)		Wave Ht (m)	Sea State	Humidity (%)	Prob of Rain
		Max	Min				Max	Avg				
05-10-24 (Saturday)	0001	30	26	27	1008	SSE	22	18	0.5	2	93	24% (0.0 mm)
	0600			27	1008	SSE	17	13	0.3	2	90	14% (0.0 mm)
	1200			28	1009	SSW	14	12	0.3	2	79	24% (0.0 mm)
	1800			29	1008	SSW	15	13	0.3	2	87	17% (0.0 mm)
06-10-24 (Sunday)	0001	30	26	27	1010	SSE	11	9	0.2	2	91	24% (0.0 mm)
	0600			26	1010	ESE	8	7	0.2	2	92	18% (0.0 mm)
	1200			28	1010	S	9	8	0.2	2	77	65% (0.9 mm)
	1800			29	1010	SSW	8	7	0.2	2	87	15% (0.0 mm)
07-10-24 (Monday)	0001	31	26	27	1011	SE	8	7	0.1	1	92	52% (0.3 mm)
	0600			26	1012	ESE	6	5	0.1	1	94	12% (0.0 mm)
	1200			28	1012	WSW	6	5	0.1	1	76	23% (0.0 mm)
	1800			29	1011	W	7	6	0.1	1	82	10% (0.0 mm)
08-10-24 (Tuesday)	0001	32	26	28	1012	ESE	4	3	0.1	1	91	22% (0.0 mm)
	0600			26	1013	ESE	6	5	0.1	1	93	30% (0.2 mm)
	1200			28	1012	WSW	6	5	0.1	1	73	35% (0.2 mm)
	1800			29	1012	W	8	7	0.1	1	81	10% (0.0 mm)

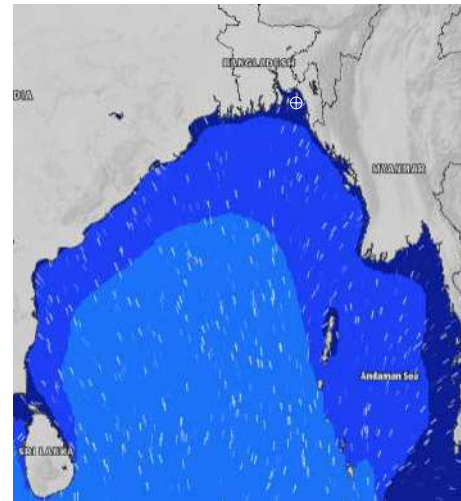
05 Oct 2024



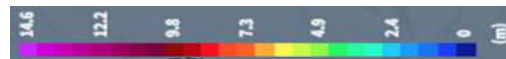
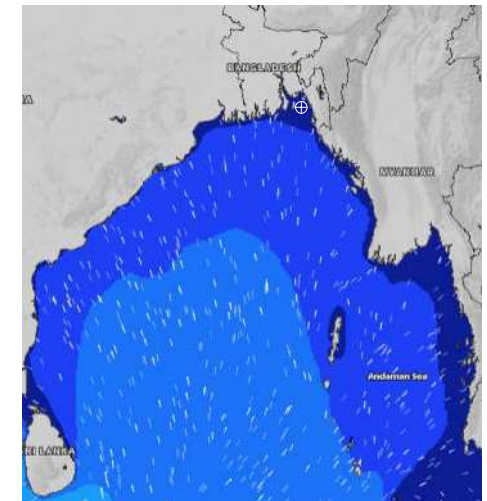
06 Oct 2024



07 Oct 2024



08 Oct 2024



Significant wave height (m)

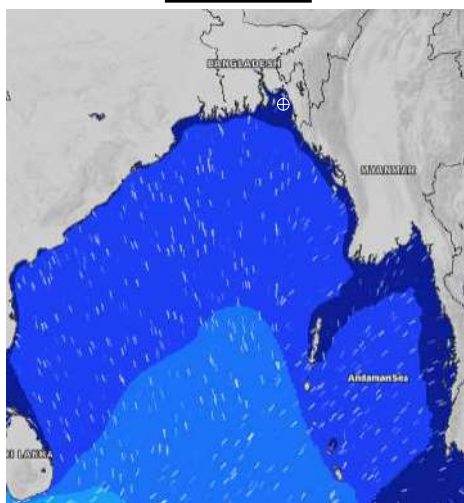


MARINE WEATHER FORECAST (05 to 12 Oct 2024) NEAR AUTHORITY BUOY (22° 12' N, 091° 38' E)

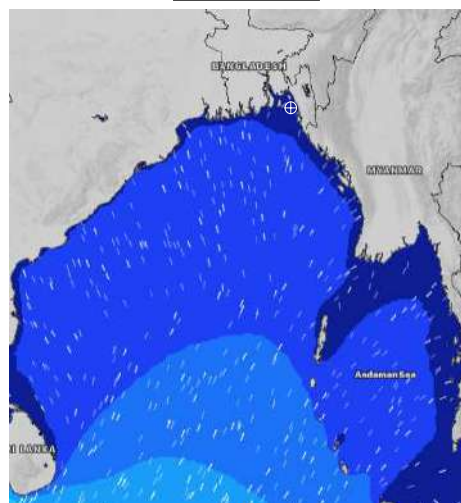


Date	Time	Air Temp (°C)		Sea Surface Temp (°C)	Baro Pressure (mbar)	Wind Direction	Wind Spd (kts)		Wave Ht (m)	Sea State	Humidity (%)	Prob of Rain
		Max	Min				Max	Avg				
09-10-24 (Wednesday)	0001	31	26	28	1011	SSE	4	3	0.1	1	90	24% (0.0 mm)
	0600			27	1011	SE	6	5	0.1	1	94	45% (0.3 mm)
	1200			28	1010	SW	7	6	0.1	1	75	35% (0.2 mm)
	1800			29	1009	WSW	7	6	0.1	1	81	10% (0.0 mm)
10-10-24 (Thursday)	0001	31	26	28	1009	SSW	6	5	0.1	1	91	38% (0.3 mm)
	0600			27	1010	SSE	7	6	0.1	1	93	37% (0.3 mm)
	1200			28	1010	SW	9	8	0.1	1	76	42% (0.4 mm)
	1800			29	1008	WSW	7	6	0.1	1	82	15% (0.0 mm)
11-10-24 (Friday)	0001	31	26	28	1009	S	6	5	0.1	1	90	40% (0.4 mm)
	0600			27	1009	SE	8	7	0.1	1	92	44% (0.4 mm)
	1200			29	1009	SSW	9	8	0.1	1	76	43% (0.4 mm)
	1800			28	1007	WSW	8	7	0.1	1	83	24% (0.1 mm)
12-10-24 (Saturday)	0001	31	26	28	1009	SSW	7	6	0.1	1	92	50% (0.5 mm)
	0600			27	1010	SSE	8	7	0.1	1	92	57% (0.5 mm)
	1200			28	1010	SSW	8	7	0.1	1	78	39% (0.3 mm)
	1800			29	1008	SW	7	6	0.1	1	81	24% (0.0 mm)

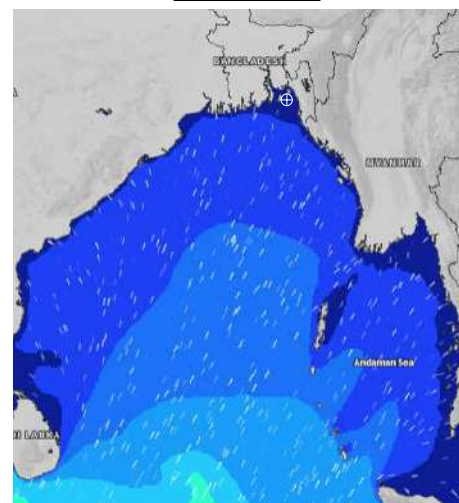
09 Oct 2024



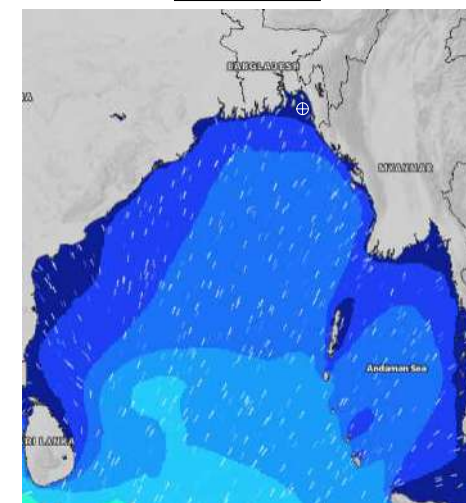
10 Oct 2024



11 Oct 2024



12 Oct 2024



Significant wave height (m)

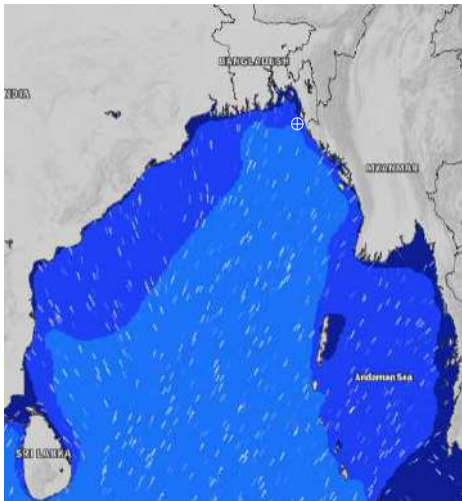


MARINE WEATHER FORECAST (05 to 12 Oct 2024) 20 NM WEST OF ELEPHANT POINT (21° 10' N, 091° 42' E)

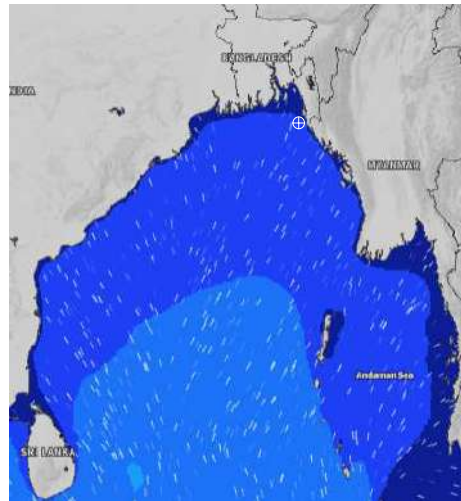


Date	Time	Air Temp (°C)		Sea Surface Temp (°C)	Baro Pressure (mbar)	Wind Direction	Wind Spd (kts)		Wave Ht (m)	Sea State	Humidity (%)	Prob of Rain
		Max	Min				Max	Avg				
05-10-24 (Saturday)	0001	29	26	29	1008	SSE	16	15	1.3	4	92	24% (0.0 mm)
	0600			28	1008	SSE	16	15	1.2	3	92	19% (0.0 mm)
	1200			28	1009	SSE	15	14	1.2	3	81	47% (0.3 mm)
	1800			29	1008	S	10	9	1.1	3	88	34% (0.2 mm)
06-10-24 (Sunday)	0001	30	26	29	1009	SSE	9	8	0.9	3	91	14% (0.0 mm)
	0600			28	1010	SSE	11	10	0.8	3	92	24% (0.0 mm)
	1200			28	1010	SSE	11	10	0.9	3	82	69% (0.6 mm)
	1800			29	1010	S	8	7	0.7	3	89	10% (0.0 mm)
07-10-24 (Monday)	0001	31	26	29	1011	SSE	6	5	0.7	3	91	16% (0.0 mm)
	0600			28	1012	ESE	7	6	0.7	3	94	11% (0.0 mm)
	1200			28	1012	SSW	4	3	0.6	3	76	33% (0.2 mm)
	1800			29	1011	W	6	5	0.6	3	86	10% (0.0 mm)
08-10-24 (Tuesday)	0001	31	26	29	1012	SSW	4	3	0.6	3	92	34% (0.2 mm)
	0600			28	1013	E	4	3	0.6	3	93	24% (0.0 mm)
	1200			28	1012	W	4	3	0.6	3	74	51% (0.4 mm)
	1800			29	1011	WNW	8	7	0.6	3	85	10% (0.0 mm)

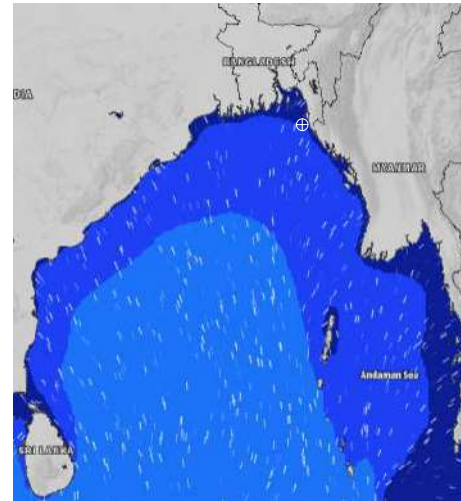
05 Oct 2024



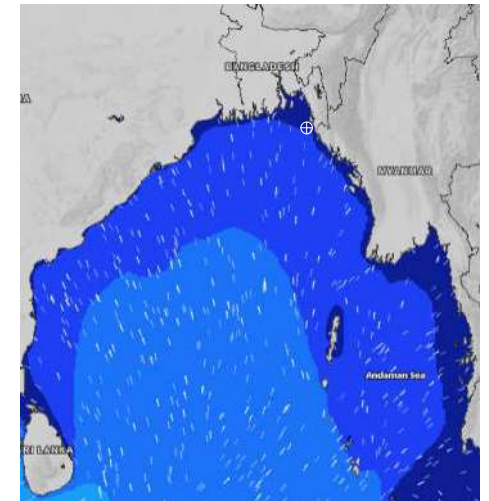
06 Oct 2024



07 Oct 2024



08 Oct 2024



Significant wave height (m)

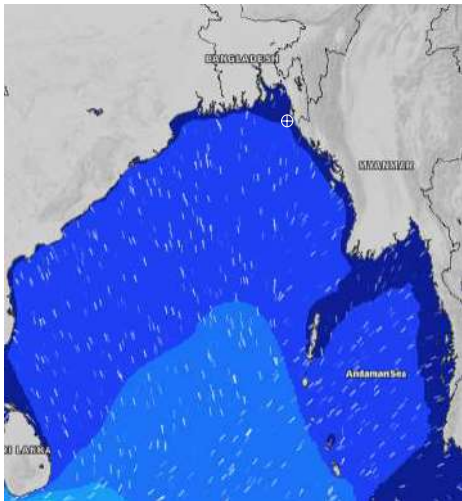


MARINE WEATHER FORECAST (05 to 12 Oct 2024) 20 NM WEST OF ELEPHANT POINT (21° 10' N, 091° 42' E)

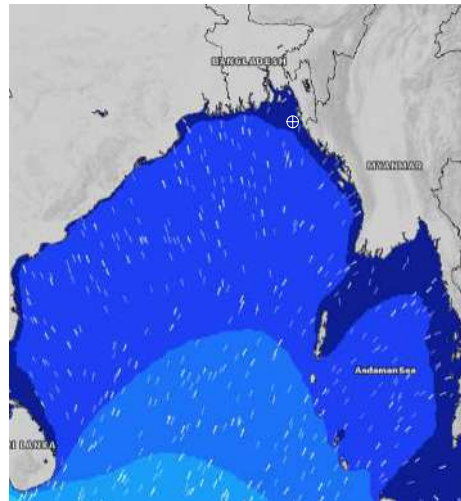


Date	Time	Air Temp (°C)		Sea Surface Temp (°C)	Baro Pressure (mbar)	Wind Direction	Wind Spd (kts)		Wave Ht (m)	Sea State	Humidity (%)	Prob of Rain
		Max	Min				Max	Avg				
09-10-24 (Wednesday)	0001	31	26	29	1011	W	5	4	0.6	3	91	32% (0.2 mm)
	0600			28	1011	N	4	3	0.6	3	93	15% (0.0 mm)
	1200			29	1011	W	5	4	0.5	2	74	38% (0.3 mm)
	1800			29	1009	W	9	8	0.5	2	84	37% (0.3 mm)
10-10-24 (Thursday)	0001	31	25	29	1010	WNW	5	4	0.5	2	91	42% (0.4 mm)
	0600			28	1010	NNE	3	2	0.5	2	94	15% (0.0 mm)
	1200			29	1010	WSW	5	4	0.5	2	74	40% (0.4 mm)
	1800			29	1009	W	8	7	0.5	2	83	44% (0.4 mm)
11-10-24 (Friday)	0001	31	25	29	1010	WSW	5	4	0.5	2	91	43% (0.4 mm)
	0600			28	1010	SW	4	3	0.5	2	94	34% (0.2 mm)
	1200			28	1009	SW	6	5	0.6	3	78	43% (0.4 mm)
	1800			29	1007	W	7	6	0.6	3	85	24% (0.0 mm)
12-10-24 (Saturday)	0001	31	26	28	1009	W	7	6	0.7	3	91	64% (0.6 mm)
	0600			28	1010	W	5	4	0.7	3	94	51% (0.5 mm)
	1200			28	1010	WNW	6	5	0.8	3	81	43% (0.4 mm)
	1800			29	1008	W	7	6	0.8	3	84	28% (0.1 mm)

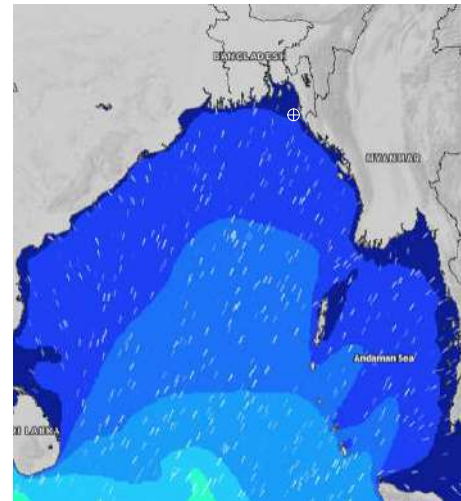
09 Oct 2024



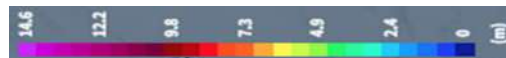
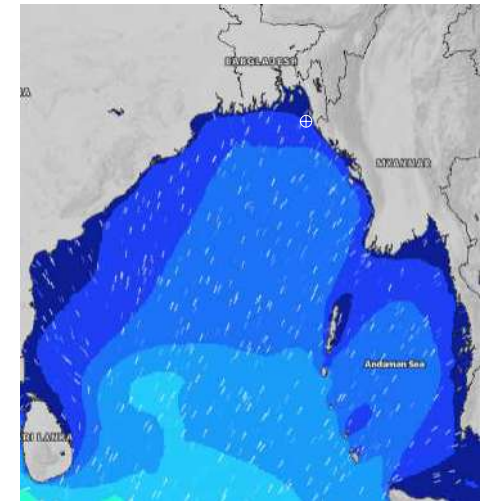
10 Oct 2024



11 Oct 2024



12 Oct 2024



Significant wave height (m)



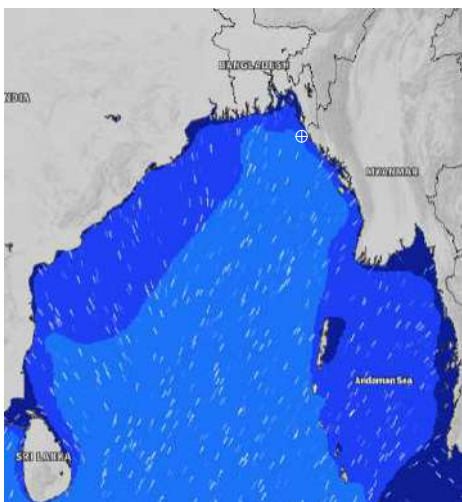
MARINE WEATHER FORECAST (05 to 12 Oct 2024)

15 NM WEST OF ST. MARTIN'S LIGHT HOUSE (20° 37' N, 092° 03' E)

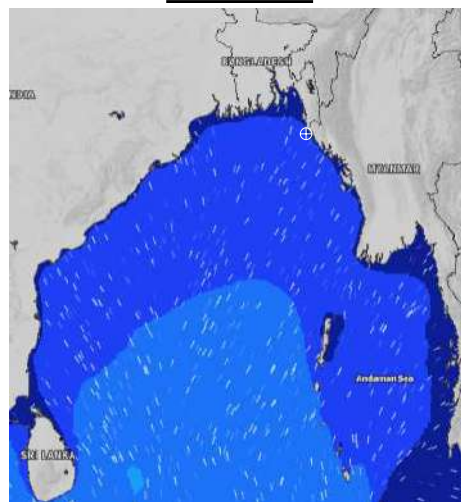


Date	Time	Air Temp (°C)		Sea Surface Temp (°C)	Baro Pressure (mbar)	Wind Direction	Wind Spd (kts)		Wave Ht (m)	Sea State	Humidity (%)	Prob of Rain
		Max	Min				Max	Avg				
05-10-24 (Saturday)	0001	29	26	29	1009	SSE	14	13	1.4	4	92	30% (0.2 mm)
	0600			29	1008	SE	13	12	1.3	4	92	32% (0.2 mm)
	1200			28	1010	SE	14	13	1.3	4	87	24% (0.0 mm)
	1800			29	1007	S	8	7	1.1	3	90	38% (0.2 mm)
06-10-24 (Sunday)	0001	29	26	29	1010	S	9	8	1.1	3	92	19% (0.0 mm)
	0600			27	1009	SSE	10	9	1.1	3	93	24% (0.0 mm)
	1200			28	1011	SSE	10	9	1.0	3	82	72% (0.6 mm)
	1800			29	1009	S	6	5	0.9	3	89	10% (0.0 mm)
07-10-24 (Monday)	0001	31	26	29	1011	S	7	6	0.8	3	91	15% (0.0 mm)
	0600			29	1011	ESE	6	5	0.8	3	94	11% (0.0 mm)
	1200			29	1013	SE	6	5	0.8	3	75	38% (0.2 mm)
	1800			29	1010	W	5	4	0.8	3	86	10% (0.0 mm)
08-10-24 (Tuesday)	0001	31	26	29	1012	SW	4	3	0.8	3	91	14% (0.0 mm)
	0600			29	1012	W	3	2	0.7	3	92	22% (0.0 mm)
	1200			29	1013	NNE	3	2	0.7	3	72	35% (0.2 mm)
	1800			29	1010	WNW	9	8	0.8	3	84	16% (0.0 mm)

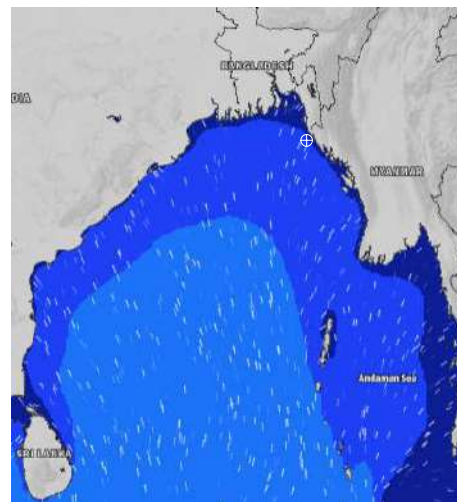
05 Oct 2024



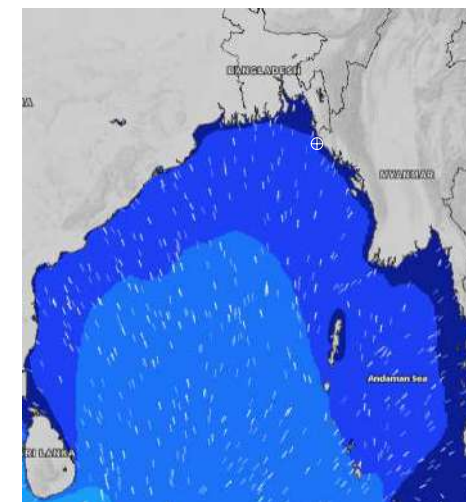
06 Oct 2024



07 Oct 2024



08 Oct 2024



Significant wave height (m)



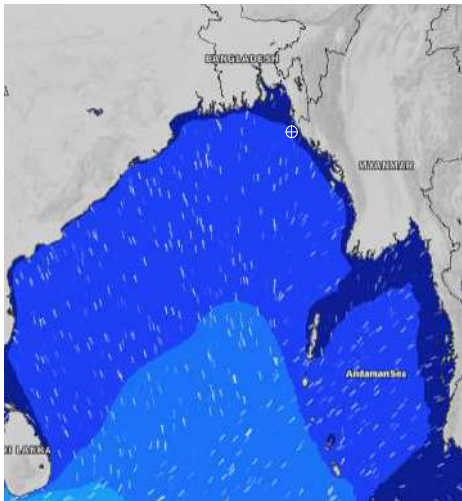
MARINE WEATHER FORECAST (05 to 12 Oct 2024)

15 NM WEST OF ST. MARTIN'S LIGHT HOUSE (20° 37'N, 092° 03' E)

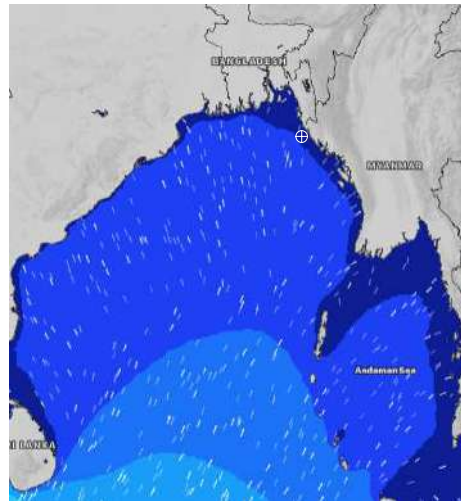


Date	Time	Air Temp (°C)		Sea Surface Temp (°C)	Baro Pressure (mbar)	Wind Direction	Wind Spd (kts)		Wave Ht (m)	Sea State	Humidity (%)	Prob of Rain
		Max	Min				Max	Avg				
09-10-24 (Wednesday)	0001	31	26	29	1012	WNW	7	6	0.7	3	91	12% (0.0 mm)
	0600			28	1010	NNW	7	6	0.7	3	92	15% (0.0 mm)
	1200			29	1012	NW	5	4	0.7	3	74	37% (0.2 mm)
	1800			29	1009	WNW	8	7	0.7	3	84	12% (0.0 mm)
10-10-24 (Thursday)	0001	31	26	29	1010	WNW	8	7	0.6	3	91	21% (0.0 mm)
	0600			29	1009	NW	5	4	0.6	3	93	24% (0.0 mm)
	1200			28	1012	NNW	4	3	0.6	3	76	22% (0.0 mm)
	1800			29	1008	W	7	6	0.6	3	83	16% (0.0 mm)
11-10-24 (Friday)	0001	31	26	29	1010	WNW	7	6	0.6	3	92	18% (0.0 mm)
	0600			29	1009	NW	4	3	0.7	3	93	33% (0.2 mm)
	1200			28	1011	WNW	3	2	0.7	3	78	40% (0.3 mm)
	1800			29	1010	W	4	3	0.7	3	84	12% (0.0 mm)
12-10-24 (Saturday)	0001	31	26	29	1010	WNW	7	6	0.9	3	92	15% (0.0 mm)
	0600			28	1009	NW	5	4	1.0	3	93	37% (0.2 mm)
	1200			29	1012	WNW	4	3	1.0	3	78	43% (0.4 mm)
	1800			29	1008	WNW	7	6	1.1	3	85	19% (0.0 mm)

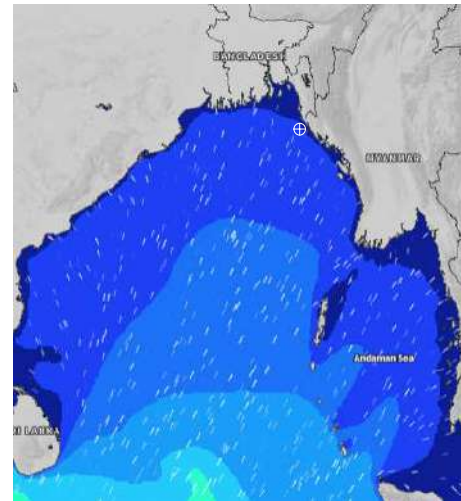
09 Oct 2024



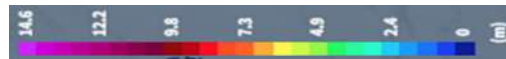
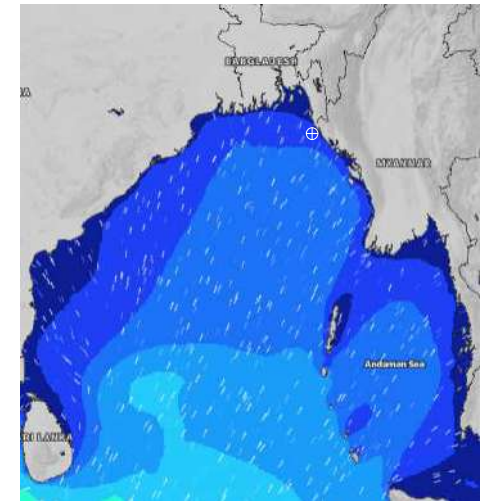
10 Oct 2024



11 Oct 2024



12 Oct 2024



Significant wave height (m)



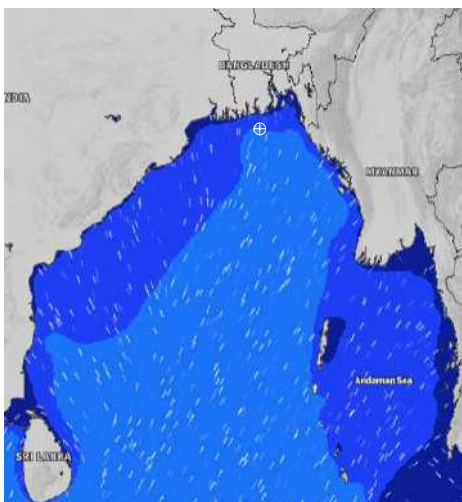
MARINE WEATHER FORECAST (05 to 12 Oct 2024)

40 NM ESE OF PAYRA FAIRWAY (21° 07' N, 090° 45' E)

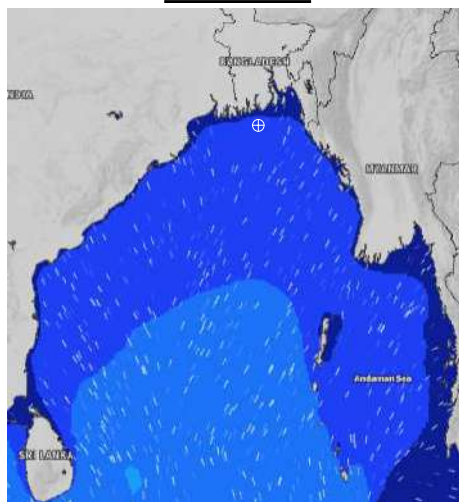


Date	Time	Air Temp (°C)		Sea Surface Temp (°C)	Baro Pressure (mbar)	Wind Direction	Wind Spd (kts)		Wave Ht (m)	Sea State	Humidity (%)	Prob of Rain
		Max	Min				Max	Avg				
05-10-24 (Saturday)	0001	29	27	29	1008	SSW	15	14	1.4	4	91	24% (0.0 mm)
	0600			29	1008	SSW	11	10	1.4	4	96	23% (0.0 mm)
	1200			29	1009	SSW	10	9	1.3	4	85	19% (0.0 mm)
	1800			29	1008	SSW	8	7	1.1	3	87	10% (0.0 mm)
06-10-24 (Sunday)	0001	30	27	29	1009	SSW	9	8	1.1	3	89	18% (0.0 mm)
	0600			28	1010	SSW	6	5	1.0	3	90	24% (0.0 mm)
	1200			29	1010	SSW	7	6	0.9	3	80	47% (0.4 mm)
	1800			29	1009	SSW	6	5	0.9	3	85	10% (0.0 mm)
07-10-24 (Monday)	0001	30	27	29	1011	SSW	7	6	0.8	3	89	16% (0.0 mm)
	0600			28	1012	SSW	4	3	0.9	3	90	60% (1.2 mm)
	1200			29	1012	S	5	4	0.9	3	79	47% (0.4 mm)
	1800			29	1011	S	4	3	0.9	3	84	10% (0.0 mm)
08-10-24 (Tuesday)	0001	31	26	29	1012	SSW	7	6	0.9	3	90	15% (0.0 mm)
	0600			28	1012	WSW	5	4	0.9	3	92	36% (0.2 mm)
	1200			29	1012	W	4	3	0.9	3	75	34% (0.2 mm)
	1800			29	1011	W	6	5	0.8	3	82	10% (0.0 mm)

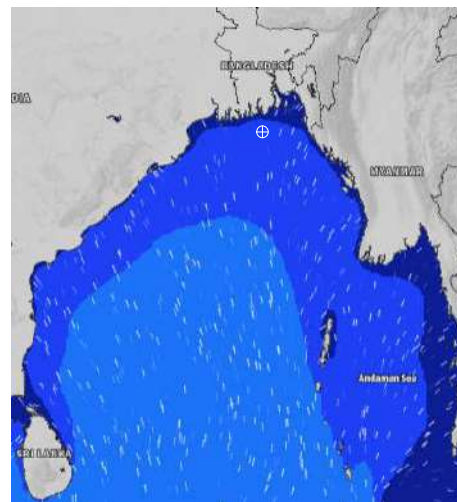
05 Oct 2024



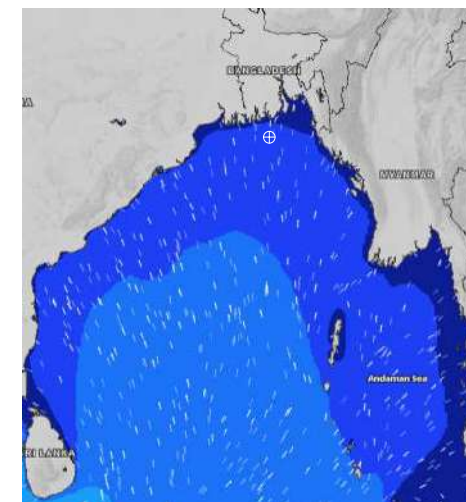
06 Oct 2024



07 Oct 2024



08 Oct 2024



Significant wave height (m)

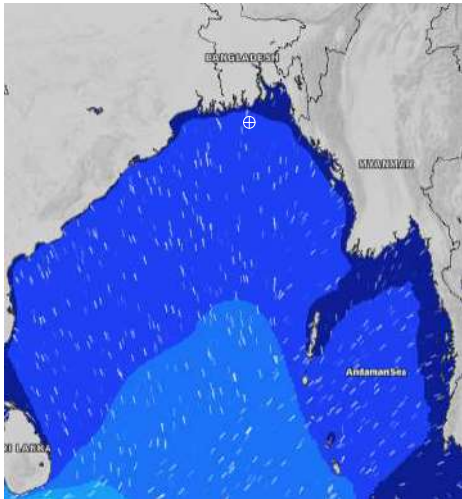


MARINE WEATHER FORECAST (05 to 12 Oct 2024) 40 NM ESE OF PAYRA FAIRWAY (21° 07' N, 090° 45' E)

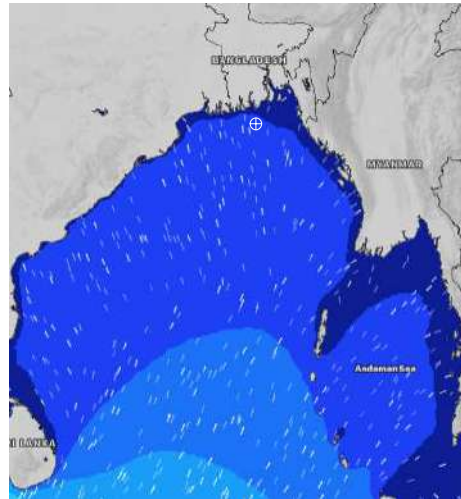


Date	Time	Air Temp (°C)		Sea Surface Temp (°C)	Baro Pressure (mbar)	Wind Direction	Wind Spd (kts)		Wave Ht (m)	Sea State	Humidity (%)	Prob of Rain
		Max	Min				Max	Avg				
09-10-24 (Wednesday)	0001	31	26	29	1011	WSW	7	6	0.8	3	89	18% (0.0 mm)
	0600			28	1011	W	5	4	0.8	3	93	20% (0.0 mm)
	1200			29	1011	W	6	5	0.8	3	75	37% (0.0 mm)
	1800			29	1009	W	7	6	0.8	3	81	12% (0.0 mm)
10-10-24 (Thursday)	0001	31	26	29	1010	WSW	7	6	0.8	3	90	22% (0.0 mm)
	0600			28	1010	WSW	6	5	0.7	3	91	24% (0.0 mm)
	1200			29	1010	WSW	7	6	0.7	3	76	47% (0.4 mm)
	1800			29	1008	WSW	7	6	0.7	3	82	12% (0.0 mm)
11-10-24 (Friday)	0001	31	27	28	1010	WSW	7	6	0.7	3	90	23% (0.0 mm)
	0600			28	1009	SW	7	6	0.7	3	92	36% (0.2 mm)
	1200			29	1009	SW	6	5	0.8	3	76	54% (0.5 mm)
	1800			29	1007	WSW	6	5	0.9	3	82	11% (0.0 mm)
12-10-24 (Saturday)	0001	31	27	28	1009	WSW	9	8	1.0	3	90	34% (0.2 mm)
	0600			28	1010	SW	8	7	1.0	3	94	50% (0.5 mm)
	1200			29	1010	SW	7	6	1.1	3	78	52% (0.5 mm)
	1800			29	1008	WSW	7	6	1.1	3	82	10% (0.0 mm)

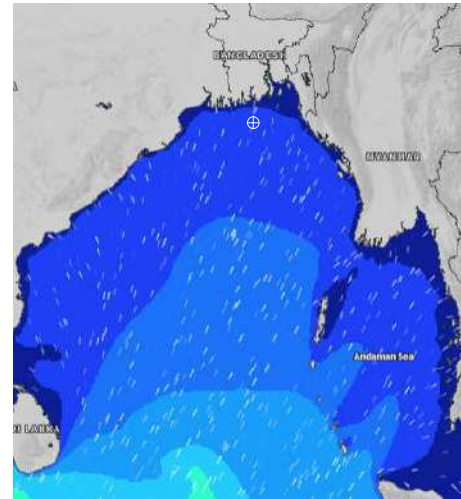
09 Oct 2024



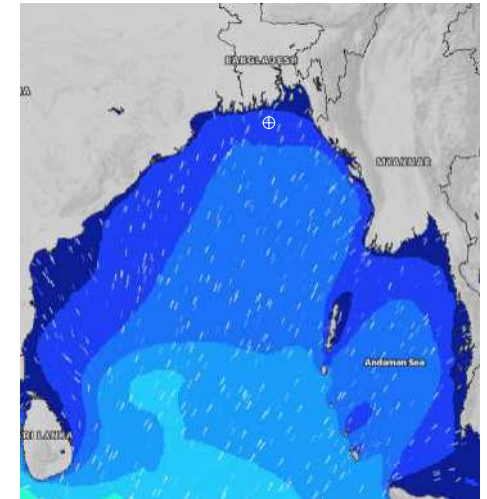
10 Oct 2024



11 Oct 2024



12 Oct 2024



Significant wave height (m)



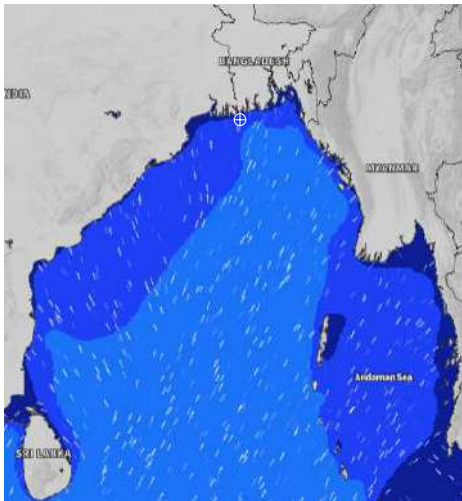
MARINE WEATHER FORECAST (05 to 12 Oct 2024)

10 NM SOUTH OF MONGLA FAIRWAY (21° 16' N, 089° 34' E)

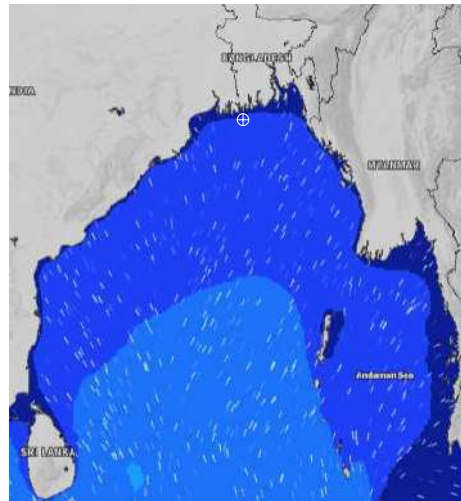


Date	Time	Air Temp (°C)		Sea Surface Temp (°C)	Baro Pressure (mbar)	Wind Direction	Wind Spd (kts)		Wave Ht (m)	Sea State	Humidity (%)	Prob of Rain
		Max	Min				Max	Avg				
05-10-24 (Saturday)	0001	30	26	29	1007	S	14	13	1.2	3	94	40% (0.6 mm)
	0600			29	1007	S	12	11	1.3	4	92	52% (0.5 mm)
	1200			29	1008	S	11	10	1.2	3	84	74% (1.1 mm)
	1800			29	1007	S	9	8	1.1	3	88	18% (0.0 mm)
06-10-24 (Sunday)	0001	31	26	29	1009	S	8	7	1.0	3	94	19% (0.0 mm)
	0600			28	1009	SSE	7	6	0.9	3	96	31% (0.2 mm)
	1200			29	1010	SSE	5	4	0.8	3	74	24% (0.0 mm)
	1800			29	1009	SSE	8	7	0.8	3	86	10% (0.0 mm)
07-10-24 (Monday)	0001	32	26	29	1011	S	6	5	0.8	3	94	24% (0.0 mm)
	0600			28	1012	SE	4	3	0.8	3	95	12% (0.0 mm)
	1200			29	1012	ESE	4	3	0.8	3	77	36% (0.2 mm)
	1800			29	1011	SSE	4	3	0.9	3	85	52% (0.5 mm)
08-10-24 (Tuesday)	0001	32	26	29	1012	S	7	6	0.9	3	92	12% (0.0 mm)
	0600			28	1012	SE	5	4	0.9	3	94	47% (0.4 mm)
	1200			29	1013	ESE	5	4	0.8	3	72	61% (0.6 mm)
	1800			29	1011	SSE	7	6	0.9	3	84	10% (0.0 mm)

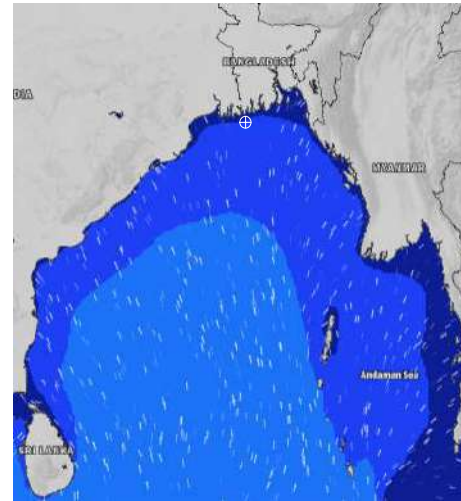
05 Oct 2024



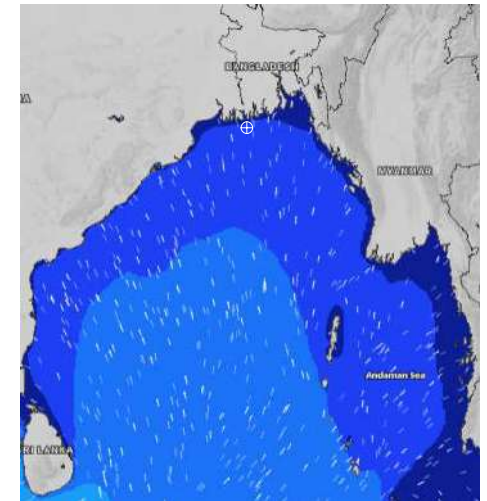
06 Oct 2024



07 Oct 2024



08 Oct 2024



Significant wave height (m)



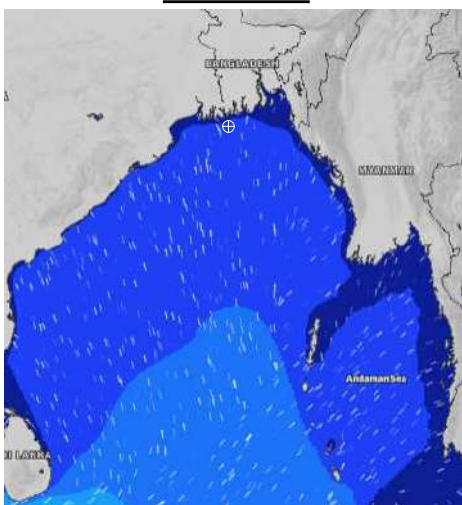
MARINE WEATHER FORECAST (05 to 12 Oct 2024)

10 NM SOUTH OF MONGLA FAIRWAY (21° 16' N, 089° 34' E)

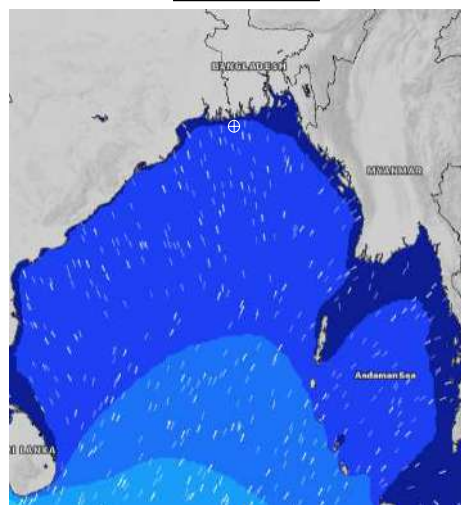


Date	Time	Air Temp (°C)		Sea Surface Temp (°C)	Baro Pressure (mbar)	Wind Direction	Wind Spd (kts)		Wave Ht (m)	Sea State	Humidity (%)	Prob of Rain
		Max	Min				Max	Avg				
09-10-24 (Wednesday)	0001	32	26	29	1011	SW	8	7	0.9	3	93	15% (0.0 mm)
	0600			29	1011	WSW	7	6	1.0	3	95	42% (0.4 mm)
	1200			29	1011	WSW	7	6	1.0	3	70	54% (0.6 mm)
	1800			29	1009	WSW	8	7	1.0	3	81	10% (0.0 mm)
10-10-24 (Thursday)	0001	32	26	29	1009	SW	9	8	0.9	3	92	14% (0.0 mm)
	0600			28	1010	SW	9	8	0.8	3	94	37% (0.2 mm)
	1200			29	1010	WSW	9	8	0.8	3	70	12% (0.0 mm)
	1800			29	1008	SW	8	7	0.8	3	82	15% (0.0 mm)
11-10-24 (Friday)	0001	32	26	29	1009	SW	10	9	0.8	3	90	37% (0.2 mm)
	0600			29	1009	SW	9	8	0.8	3	91	50% (0.5 mm)
	1200			29	1009	SW	10	9	0.8	3	74	58% (0.6 mm)
	1800			29	1007	SW	9	8	0.8	3	83	15% (0.0 mm)
12-10-24 (Saturday)	0001	32	26	29	1009	SW	11	10	1.0	3	90	30% (0.2 mm)
	0600			28	1009	SW	12	11	1.0	3	91	24% (0.0 mm)
	1200			29	1010	SW	10	9	0.9	3	74	20% (0.0 mm)
	1800			29	1008	SW	8	7	0.9	3	82	18% (0.0 mm)

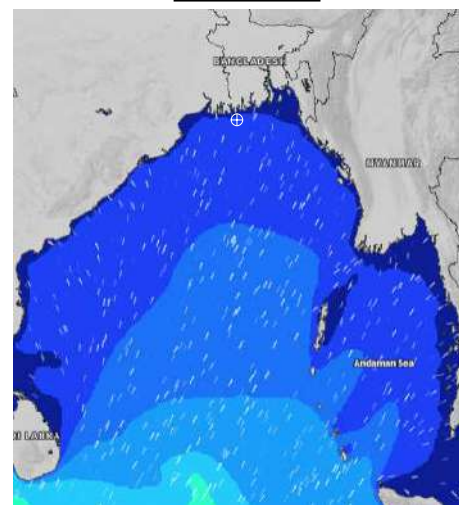
09 Oct 2024



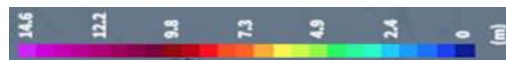
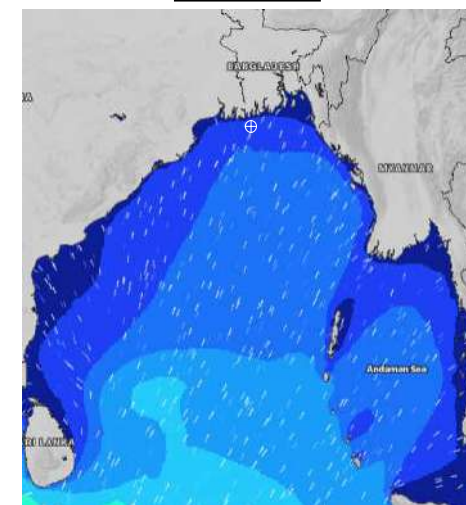
10 Oct 2024



11 Oct 2024



12 Oct 2024



Significant wave height (m)



PREDICTED SURFACE PRESSURE FORECAST (05 to 11 Oct 2024)



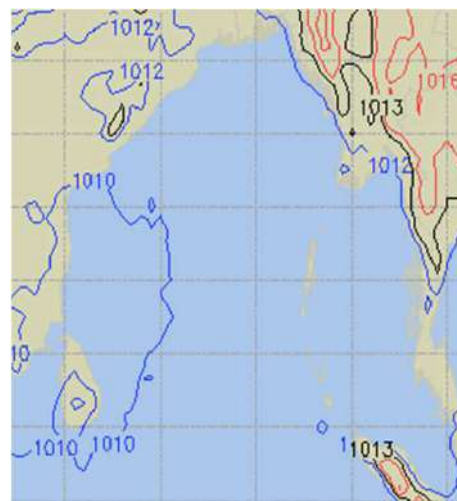
05 Oct 2024



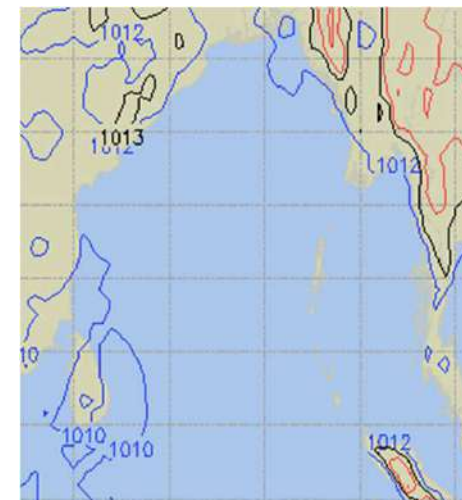
06 Oct 2024



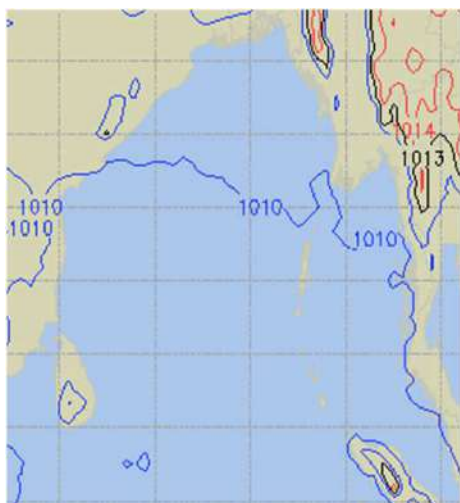
07 Oct 2024



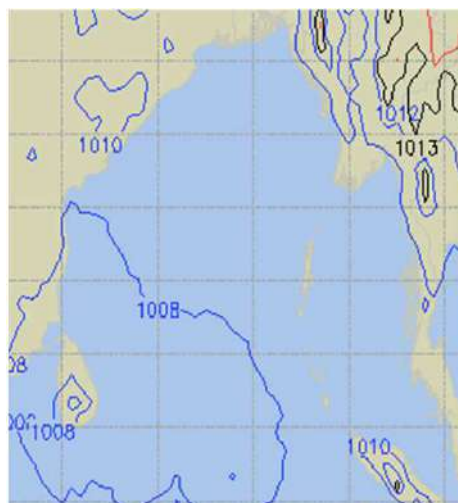
08 Oct 2024



09 Oct 2024



10 Oct 2024



11 Oct 2024

