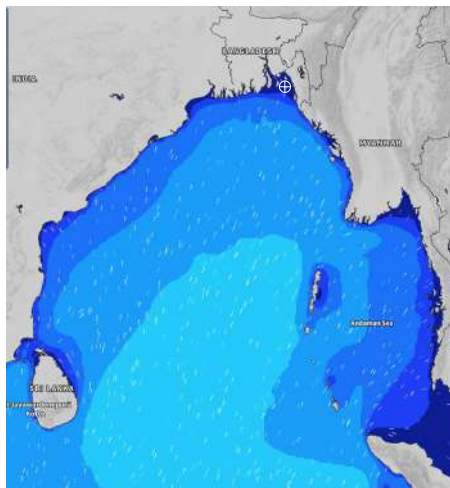


MARINE WEATHER FORECAST- NEAR AUTHORITY BUOY (Lat 22° 12'N, Long 091° 38'E)

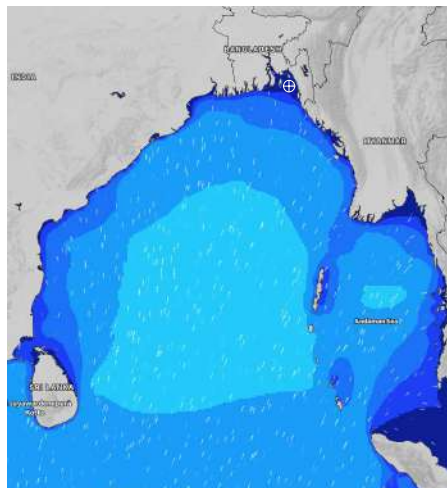
DATE : 05 to 12 June 2024

Date	Time	Max Wind Spd (kts)	Wind Direction	Wave Ht (m)	Sea State	Baro Pressure	Air Temp		Sea Surface Temp	Humidity (%)	Prb of Rain (%)	Sea State	Wave Ht (m)
							Max	Min					
05-06-24	0001	15	SSE	0.3	2	1006	33	27	29	90%	33% (0.2 mm)	0	0
	0600	10	SSE	0.2	2	1007			28	92%	19% (0.0 mm)	1	0 - 0.1
	1200	8	SSW	0.2	2	1006			29	84%	15% (0.0 mm)	2	0.1 - 0.5
	1800	10	SSW	0.2	2	1004			29	86%	16% (0.0 mm)	3	0.5 - 1.25
06-06-24	0001	12	S	0.3	2	1006	33	27	29	89%	42% (0.4 mm)	4	1.25 - 2.5
	0600	10	SSE	0.2	2	1006			28	91%	30% (0.2 mm)	5	2.5 - 4.0
	1200	9	SSW	0.2	2	1007			29	83%	22% (0.0 mm)	6	4.0 - 6.0
	1800	13	SW	0.3	2	1004			29	88%	20% (0.0 mm)	7	6.0 - 9.0
07-06-24	0001	16	SSE	0.3	2	1006	33	27	29	92%	39% (0.4 mm)	8	9.0 - 14.0
	0600	12	SSE	0.2	2	1005			28	94%	32% (0.2 mm)	9	Over 14.0
	1200	14	SSW	0.3	2	1006			29	82%	22% (0.0 mm)		
	1800	18	S	0.4	2	1004			29	86%	17% (0.0 mm)		
08-06-24	0001	19	SSE	0.4	2	1005	33	27	29	91%	30% (0.2 mm)		
	0600	17	SSE	0.3	2	1005			28	96%	24% (0.1 mm)		
	1200	16	SSE	0.4	2	1006			29	84%	17% (0.0 mm)		
	1800	15	SW	0.4	2	1004			29	87%	20% (0.0 mm)		

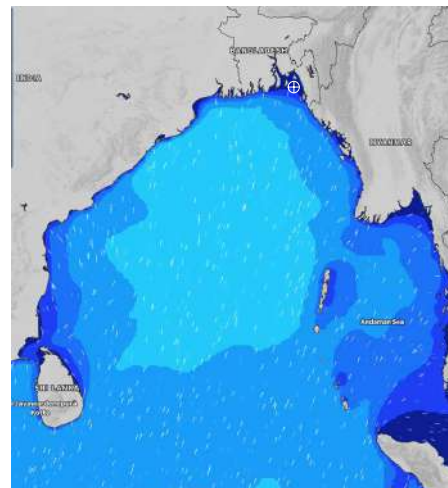
05 June 24 Wed (Probability 98%)



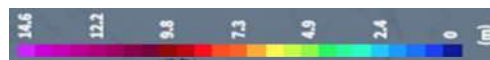
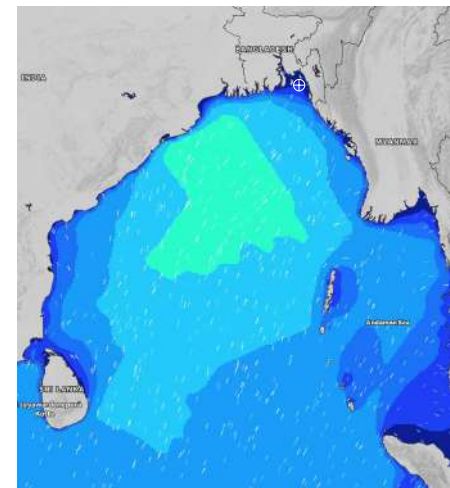
06 June 24 Thu (Probability 95%)



07 June 24 Fri (Probability 90%)



08 June 24 Sat (Probability 80%)



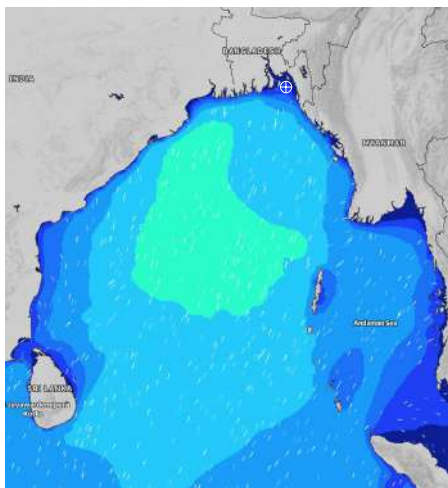
Significant wave height (m)

MARINE WEATHER FORECAST- NEAR AUTHORITY BUOY (Lat 22° 12' N, Long 091° 38' E)

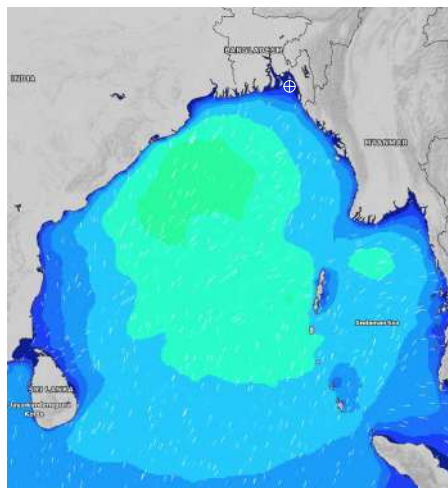
DATE : 05 to 12 June 2024

Date	Time	Max Wind Spd (kts)	Wind Direction	Wave Ht (m)	Sea State	Baro Pressure	Air Temp		Sea Surface Temp	Humidity (%)	Prob of Rain (%)	Sea State	Wave Ht (m)
							Max	Min					
09-06-24	0001	20	SSE	0.4	2	1002	32	26	28	90%	36% (0.3 mm)	0	0
	0600	18	SSE	0.3	2	1002			28	94%	41% (0.4 mm)	1	0 - 0.1
	1200	20	SSW	0.4	2	1003			29	79%	30% (0.2 mm)	2	0.1 - 0.5
	1800	20	SSW	0.4	2	1001			29	87%	19% (0.0 mm)	3	0.5 - 1.25
10-06-24	0001	19	SE	0.3	2	1003	32	26	28	91%	41% (0.4 mm)	4	1.25 - 2.5
	0600	19	SE	0.3	2	1002			28	95%	38% (0.4 mm)	5	2.5 - 4.0
	1200	21	SSW	0.4	2	1003			29	81%	25% (0.1 mm)	6	4.0 - 6.0
	1800	19	S	0.3	2	1001			29	87%	20% (0.0 mm)	7	6.0 - 9.0
11-06-24	0001	22	SSE	0.4	2	1002	32	26	28	89%	34% (0.3 mm)	8	9.0 - 14.0
	0600	25	SSE	0.4	2	1002			28	93%	35% (0.3 mm)	9	Over 14.0
	1200	20	S	0.4	2	1003			29	75%	60% (0.6 mm)		
	1800	24	SSE	0.4	2	1001			29	88%	45% (0.4 mm)		
12-06-24	0001	25	SSE	0.4	2	1002	32	26	28	89%	54% (0.5 mm)		
	0600	18	SE	0.3	2	1001			28	91%	63% (0.6 mm)		
	1200	20	ESE	0.4	2	1002			29	81%	66% (0.6 mm)		
	1800	16	SSE	0.3	2	1000			29	87%	45% (0.5 mm)		

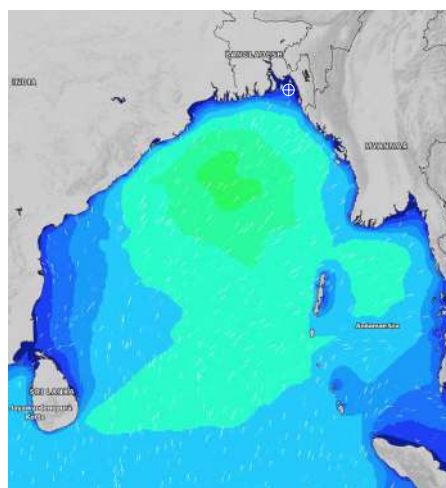
09 June 24 Sun (Probability 70%)



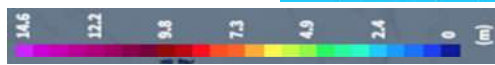
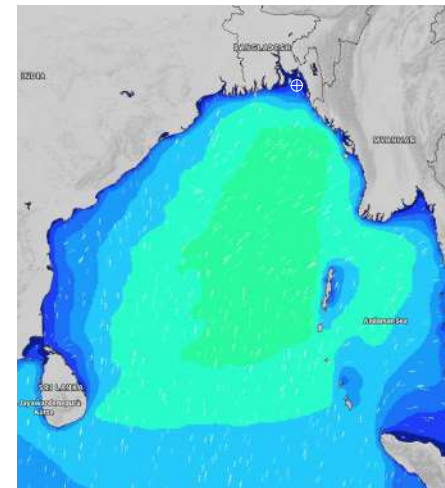
10 June 24 Mon (Probability 60%)



11 June 24 Tue (Probability 50%)



12 June 24 Wed (Probability 50%)



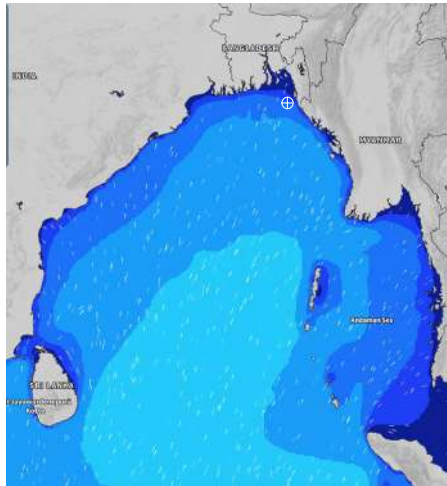
Significant wave height (m)

MARINE WEATHER FORECAST- 20 NM WEST OF ELEPHANT POINT (Lat 21° 10'N, Long 091° 42'E)

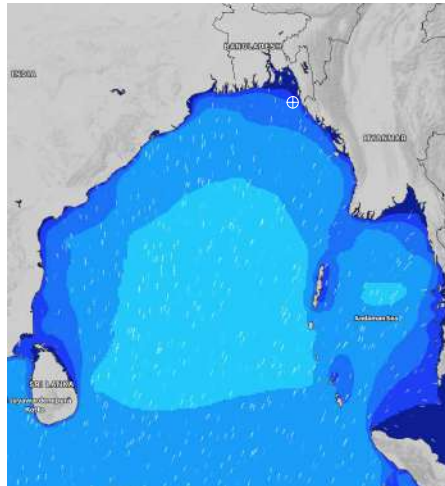
DATE : 05 to 12 June 2024

Date	Time	Max Wind Spd (kts)	Wind Direction	Wave Ht (m)	Sea State	Baro Pressure	Air Temp		Sea Surface Temp	Humidity (%)	Prob of Rain (%)	Sea State	Wave Ht (m)
							Max	Min					
05-06-24	0001	9	S	1.3	4	1006	33	27	29	88%	22% (0.0 mm)	0	0
	0600	10	SSE	1.4	4	1006			29	93%	20% (0.0 mm)	1	0 - 0.1
	1200	8	S	1.4	4	1007			30	82%	19% (0.0 mm)	2	0.1 - 0.5
	1800	10	SSW	1.3	4	1004			29	87%	17% (0.0 mm)	3	0.5 - 1.25
06-06-24	0001	7	S	1.3	4	1006	33	27	29	90%	30% (0.2 mm)	4	1.25 - 2.5
	0600	6	S	1.2	3	1007			29	96%	28% (0.1 mm)	5	2.5 - 4.0
	1200	5	S	1.2	3	1007			30	85%	22% (0.0 mm)	6	4.0 - 6.0
	1800	13	SW	1.3	4	1004			29	88%	26% (0.1 mm)	7	6.0 - 9.0
07-06-24	0001	13	SW	1.4	4	1006	33	27	29	89%	39% (0.4 mm)	8	9.0 - 14.0
	0600	8	S	1.5	4	1005			29	94%	34% (0.2 mm)	9	Over 14.0
	1200	10	SSE	1.6	4	1006			30	81%	22% (0.0 mm)		
	1800	15	SSE	1.7	4	1004			29	87%	23% (0.0 mm)		
08-06-24	0001	15	SSE	1.7	4	1005	33	27	29	90%	34% (0.2 mm)		
	0600	10	S	1.7	4	1005			29	94%	31% (0.2 mm)		
	1200	11	SSE	1.7	4	1006			30	82%	20% (0.0 mm)		
	1800	13	SSE	1.7	4	1004			29	88%	22% (0.0 mm)		

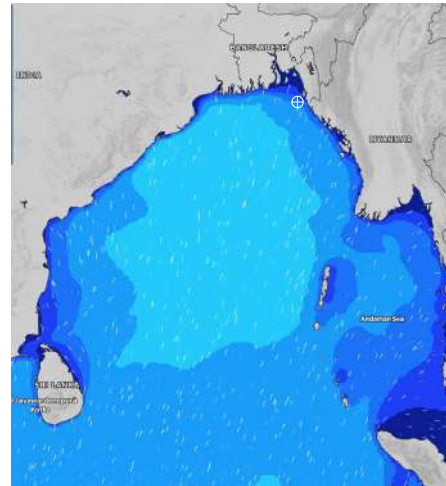
05 June 24 Wed (Probability 98%)



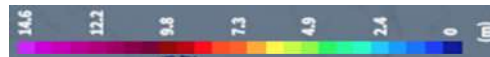
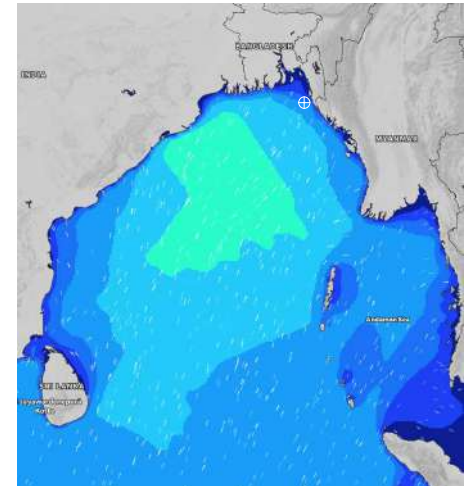
06 June 24 Thu (Probability 95%)



07 June 24 Fri (Probability 90%)



08 June 24 Sat (Probability 80%)



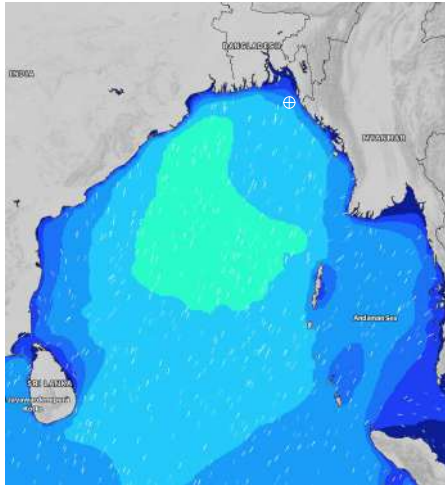
Significant wave height (m)

MARINE WEATHER FORECAST- 20 NM WEST OF ELEPHANT POINT (Lat 21° 10'N, Long 091° 42'E)

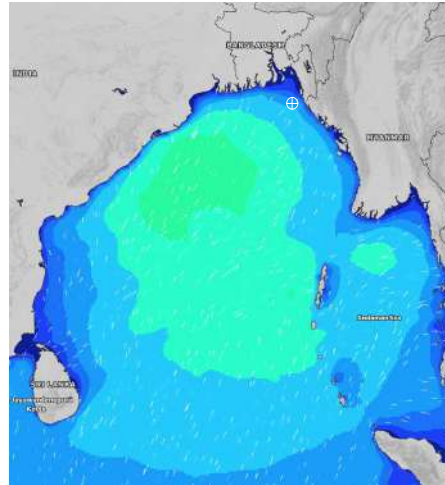
DATE : 05 to 12 June 2024

Date	Time	Max Wind Spd (kts)	Wind Direction	Wave Ht (m)	Sea State	Baro Pressure	Air Temp		Sea Surface Temp	Humidity (%)	Prob of Rain (%)	Sea State	Wave Ht (m)
							Max	Min					
09-06-24	0001	16	SSE	1.8	4	1002	32	26	29	89%	30% (0.2 mm)	0	0
	0600	10	SSE	1.8	4	1003			29	93%	35% (0.2 mm)	1	0 - 0.1
	1200	19	SSE	1.9	4	1003			30	82%	31% (0.2 mm)	2	0.1 - 0.5
	1800	18	SSE	1.9	4	1001			29	88%	12% (0.0 mm)	3	0.5 - 1.25
10-06-24	0001	19	SSE	1.9	4	1002	32	26	29	88%	46% (0.5 mm)	4	1.25 - 2.5
	0600	13	SSE	1.8	4	1002			29	94%	40% (0.4 mm)	5	2.5 - 4.0
	1200	15	SSE	1.9	4	1003			30	86%	30% (0.2 mm)	6	4.0 - 6.0
	1800	15	SSE	1.9	4	1001			29	86%	12% (0.0 mm)	7	6.0 - 9.0
11-06-24	0001	19	SE	2.0	4	1002	32	26	29	91%	30% (0.2 mm)	8	9.0 - 14.0
	0600	16	SSW	2.1	4	1002			29	94%	40% (0.4 mm)	9	Over 14.0
	1200	15	SE	2.3	4	1003			30	82%	17% (0.0 mm)		
	1800	19	SW	2.3	4	1000			29	86%	16% (0.0 mm)		
12-06-24	0001	25	SE	2.4	4	1002	32	26	29	93%	34% (0.2 mm)		
	0600	29	ESE	2.4	4	1001			29	95%	45% (0.4 mm)		
	1200	20	SSE	2.3	4	1002			30	87%	17% (0.0 mm)		
	1800	24	SE	2.4	4	1000			29	84%	18% (0.0 mm)		

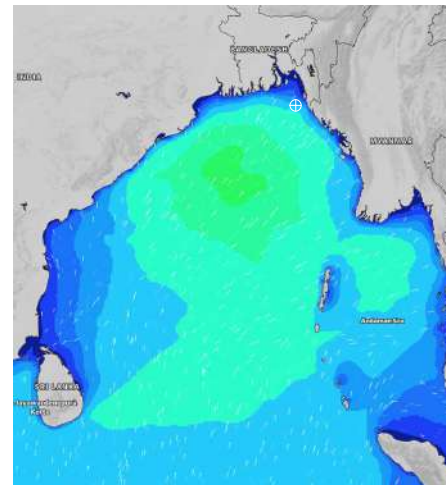
09 June 24 Sun (Probability 70%)



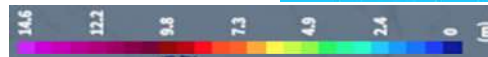
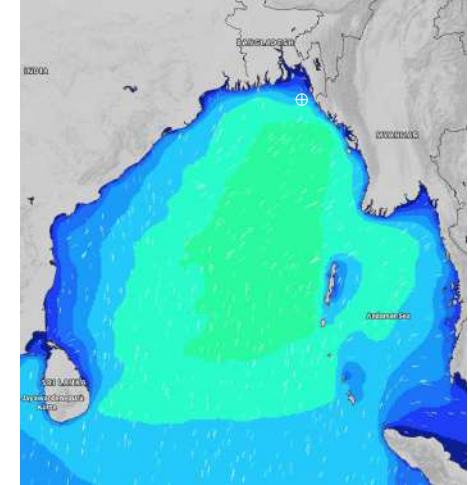
10 June 24 Mon (Probability 60%)



11 June 24 Tue (Probability 50%)



12 June 24 Wed (Probability 50%)



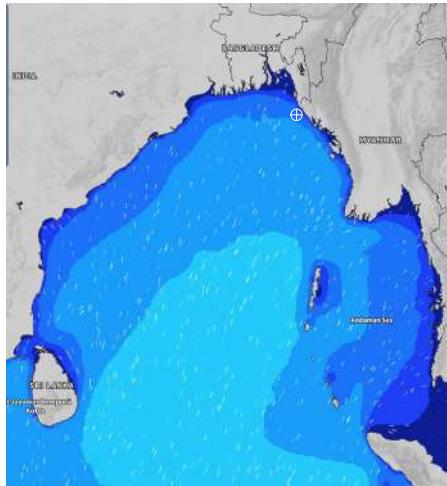
Significant wave height (m)

MARINE WEATHER FORECAST- 15 NM WEST OF ST. MARTIN'S LIGHT HOUSE (Lat 20° 37'N, Long 092° 03'E)

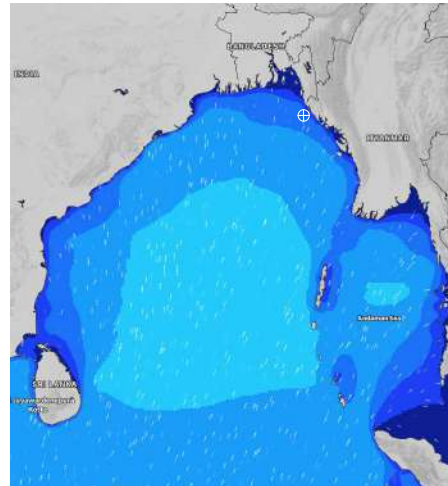
DATE : 05 to 12 June 2024

Date	Time	Max Wind Spd (kts)	Wind Direction	Wave Ht (m)	Sea State	Baro Pressure	Air Temp		Sea Surface Temp	Humidity (%)	Prob of Rain(%)	Sea State	Wave Ht (m)
							Max	Min					
05-06-24	0001	7	SSW	1.7	4	1007	33	27	29	89%	24% (0.1 mm)	0	0
	0600	6	SSE	1.8	4	1006			29	91%	22% (0.0 mm)	1	0 - 0.1
	1200	7	SSE	1.8	4	1007			30	83%	18% (0.0 mm)	2	0.1 - 0.5
	1800	7	SW	1.7	4	1004			30	87%	15% (0.0 mm)	3	0.5 - 1.25
06-06-24	0001	6	SSW	1.6	4	1007	33	27	29	90%	33% (0.2 mm)	4	1.25 - 2.5
	0600	5	SSW	1.6	4	1006			29	94%	28% (0.1 mm)	5	2.5 - 4.0
	1200	4	S	1.5	4	1008			30	82%	22% (0.0 mm)	6	4.0 - 6.0
	1800	12	SW	1.6	4	1005			30	88%	19% (0.0 mm)	7	6.0 - 9.0
07-06-24	0001	14	SW	1.7	4	1007	32	27	29	91%	35% (0.2 mm)	8	9.0 - 14.0
	0600	8	WSW	1.9	4	1005			29	94%	32% (0.2 mm)	9	Over 14.0
	1200	13	S	2.0	4	1007			30	82%	20% (0.0 mm)		
	1800	9	S	2.1	4	1005			30	88%	16% (0.0 mm)		
08-06-24	0001	14	S	2.1	4	1006	32	27	29	89%	34% (0.2 mm)		
	0600	12	SW	2.1	4	1004			29	95%	28% (0.1 mm)		
	1200	10	SW	2.2	4	1006			30	84%	18% (0.0 mm)		
	1800	11	WSW	2.1	4	1004			30	86%	16% (0.0 mm)		

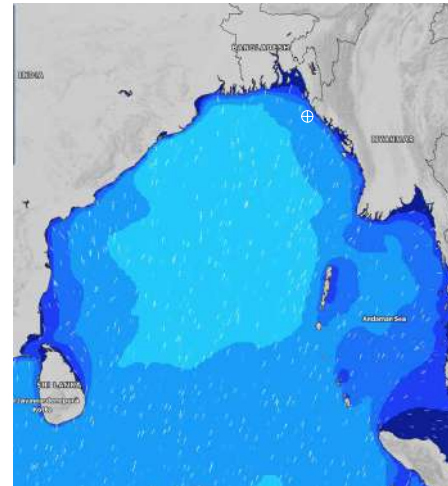
05 June 24 Wed (Probability 98%)



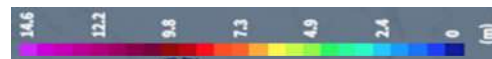
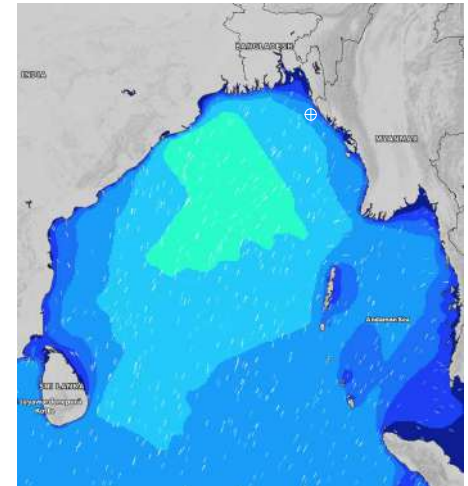
06 June 24 Thu (Probability 95%)



07 June 24 Fri (Probability 90%)



08 June 24 Sat (Probability 80%)



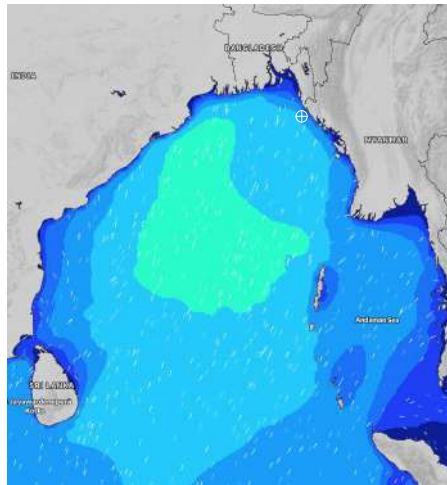
Significant wave height (m)

MARINE WEATHER FORECAST- 15 NM WEST OF ST. MARTIN'S LIGHT HOUSE (Lat 20° 37'N, Long 092° 03'E)

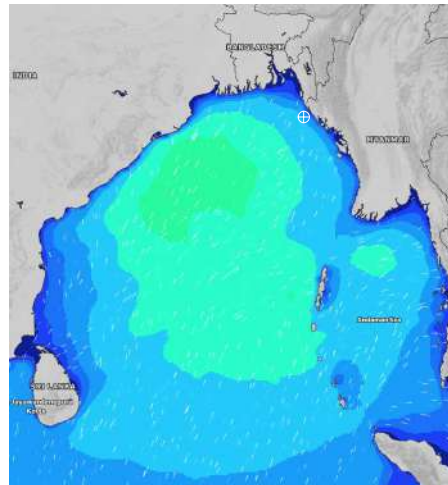
DATE : 05 to 12 June 2024

Date	Time	Max Wind Spd (kts)	Wind Direction	Wave Ht (m)	Sea State	Baro Pressure	Air Temp		Sea Surface Temp	Humidity (%)	Prob of Rain (%)	Sea State	Wave Ht (m)
							Max	Min					
09-06-24	0001	13	S	2.3	4	1003	32	26	29	91%	41% (0.4 mm)	0	0
	0600	10	SW	2.4	4	1002			29	96%	28% (0.1 mm)	1	0 - 0.1
	1200	12	SSE	2.4	4	1004			29	85%	24% (0.1 mm)	2	0.1 - 0.5
	1800	14	S	2.3	4	1001			29	88%	16% (0.0 mm)	3	0.5 - 1.25
10-06-24	0001	15	S	2.3	4	1003	32	26	29	90%	38% (0.4 mm)	4	1.25 - 2.5
	0600	16	SSW	2.3	4	1002			29	93%	32% (0.1 mm)	5	2.5 - 4.0
	1200	12	SSW	2.4	4	1004			29	81%	20% (0.0 mm)	6	4.0 - 6.0
	1800	12	SSW	2.5	4	1001			29	86%	16% (0.0 mm)	7	6.0 - 9.0
11-06-24	0001	14	S	2.6	5	1003	32	26	29	90%	55% (0.5 mm)	8	9.0 - 14.0
	0600	17	SSW	2.8	5	1001			29	96%	46% (0.5 mm)	9	Over 14.0
	1200	19	SSW	2.9	5	1003			29	85%	38% (0.4 mm)		
	1800	15	S	2.9	5	1000			29	88%	41% (0.4 mm)		
12-06-24	0001	21	SE	3.1	5	1001	32	26	29	90%	50% (0.5 mm)		
	0600	17	S	3.0	5	1000			29	96%	45% (0.5 mm)		
	1200	24	SSW	3.1	5	1001			29	85%	34% (0.2 mm)		
	1800	23	SW	3.1	5	1000			29	88%	33% (0.2 mm)		

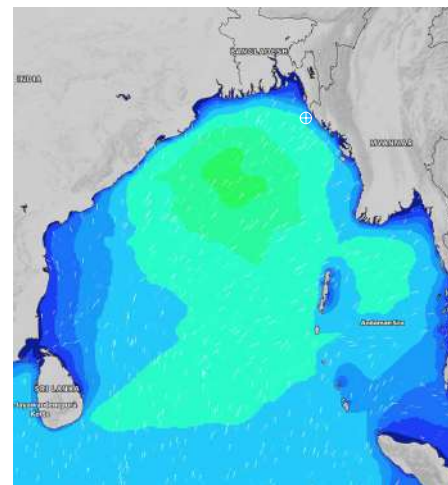
09 June 24 Sun (Probability 70%)



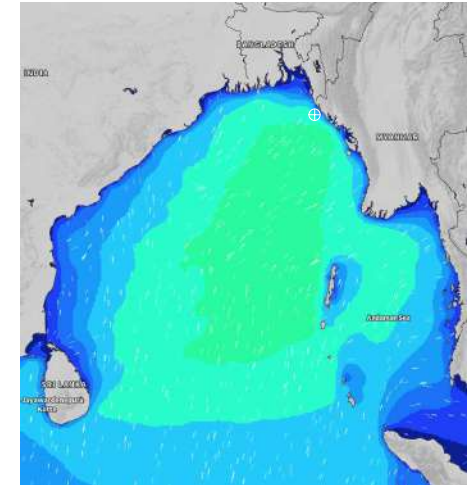
10 June 24 Mon (Probability 60%)



11 June 24 Tue (Probability 50%)



12 June 24 Wed (Probability 50%)



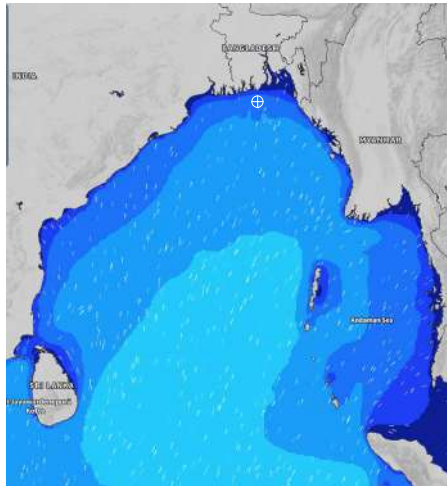
Significant wave height (m)

MARINE WEATHER FORECAST- 40 NM ESE OF PAYRA FAIRWAY (Lat 21° 07'N, Long 090° 45'E)

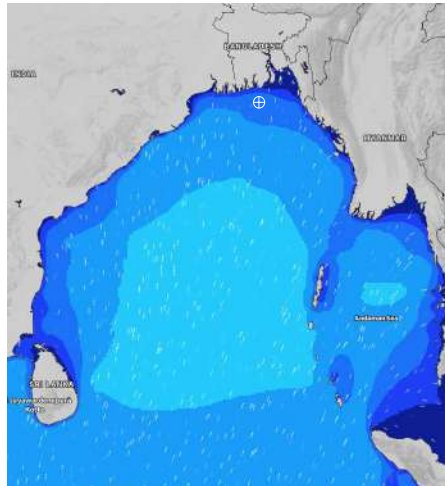
DATE : 05 to 12 June 2024

Date	Time	Max Wind Spd (kts)	Wind Direction	Wave Ht (m)	Sea State	Baro Pressure	Air Temp		Sea Surface Temp	Humidity (%)	Prob of Rain (%)	Sea State	Wave Ht (m)
							Max	Min					
05-06-24	0001	9	S	1.8	4	1006	33	27	29	89%	30% (0.2 mm)	0	0
	0600	10	SSW	1.9	4	1006			29	92%	24% (0.1 mm)	1	0 - 0.1
	1200	8	SSW	1.7	4	1007			30	83%	16% (0.0 mm)	2	0.1 - 0.5
	1800	10	SSW	1.8	4	1004			30	88%	21% (0.0 mm)	3	0.5 - 1.25
06-06-24	0001	11	SSW	1.7	4	1006	33	27	29	90%	32% (0.2 mm)	4	1.25 - 2.5
	0600	9	SW	1.6	4	1006			29	92%	36% (0.3 mm)	5	2.5 - 4.0
	1200	9	SW	1.6	4	1007			30	83%	20% (0.0 mm)	6	4.0 - 6.0
	1800	15	SW	1.8	4	1004			30	86%	21% (0.0 mm)	7	6.0 - 9.0
07-06-24	0001	20	SW	2.0	4	1006	33	27	29	89%	24% (0.1 mm)	8	9.0 - 14.0
	0600	14	SW	2.2	4	1005			29	94%	23% (0.0 mm)	9	Over 14.0
	1200	16	SSW	2.3	4	1006			30	82%	16% (0.0 mm)		
	1800	18	SSW	2.3	4	1003			30	87%	29% (0.1 mm)		
08-06-24	0001	20	SSW	2.3	4	1004	33	27	29	88%	28% (0.1 mm)		
	0600	17	SSW	2.4	4	1004			29	93%	27% (0.1 mm)		
	1200	17	SSW	2.5	4	1005			30	85%	15% (0.0 mm)		
	1800	20	SSW	2.5	4	1003			30	88%	26% (0.1 mm)		

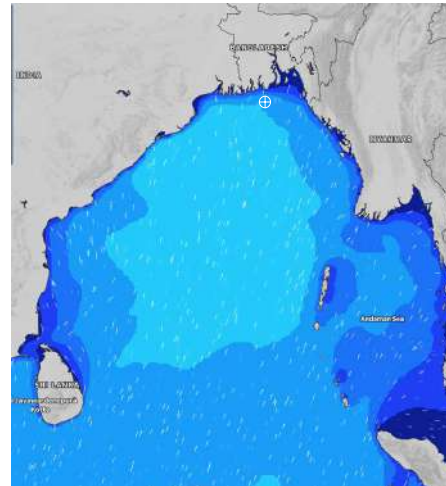
05 June 24 Wed (Probability 98%)



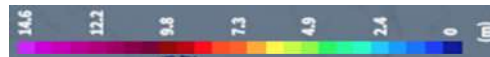
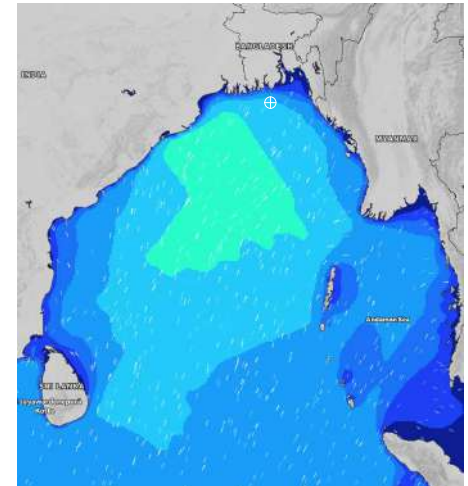
06 June 24 Thu (Probability 95%)



07 June 24 Fri (Probability 90%)



08 June 24 Sat (Probability 80%)



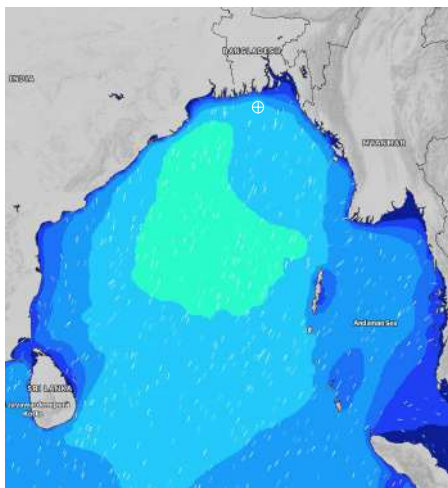
Significant wave height (m)

MARINE WEATHER FORECAST- 40 NM ESE OF PAYRA FAIRWAY (Lat 21° 07'N, Long 090° 45' E)

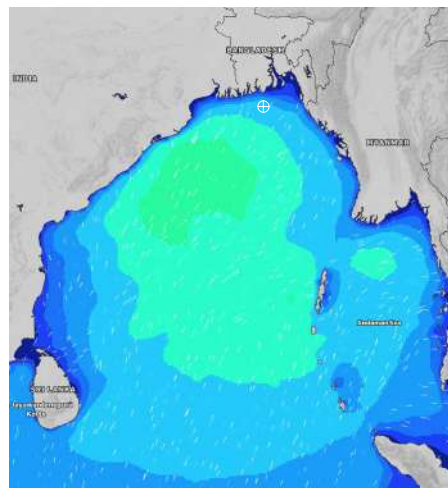
DATE : 05 to 12 June 2024

Date	Time	Max Wind Spd (kts)	Wind Direction	Wave Ht (m)	Sea Stae	Baro Pressure	Air Temp		Sea Surface Temp	Humidity (%)	Prob of Rain (%)	Sea State	Wave Ht (m)
							Max	Min					
09-06-24	0001	19	SSW	2.6	5	1002	32	26	29	90%	24% (0.1 mm)	0	0
	0600	14	SSW	2.7	5	1002			29	95%	30% (0.2 mm)	1	0 - 0.1
	1200	19	S	2.7	5	1003			30	87%	19% (0.0 mm)	2	0.1 - 0.5
	1800	20	S	2.6	5	1000			30	89%	18% (0.0 mm)	3	0.5 - 1.25
10-06-24	0001	20	SSW	2.6	5	1002	32	26	29	91%	34% (0.2 mm)	4	1.25 - 2.5
	0600	20	SSW	2.6	5	1002			29	96%	24% (0.1 mm)	5	2.5 - 4.0
	1200	15	SSW	2.7	5	1003			30	86%	19% (0.0 mm)	6	4.0 - 6.0
	1800	15	SSW	2.8	5	1000			30	88%	24% (0.1 mm)	7	6.0 - 9.0
11-06-24	0001	20	S	2.8	5	1002	32	26	29	92%	52% (0.5 mm)	8	9.0 - 14.0
	0600	24	SSW	3.0	5	1001			29	95%	42% (0.4 mm)	9	Over 14.0
	1200	25	SSW	3.2	5	1002			30	84%	35% (0.2 mm)		
	1800	25	SSW	3.2	5	1000			30	87%	24% (0.1 mm)		
12-06-24	0001	15	S	3.1	5	1001	32	26	29	93%	38% (0.4 mm)		
	0600	10	W	2.9	5	1002			29	95%	25% (0.1 mm)		
	1200	13	SW	2.9	5	1001			30	84%	16% (0.0 mm)		
	1800	15	SSW	3.0	5	1000			30	86%	21% (0.0 mm)		

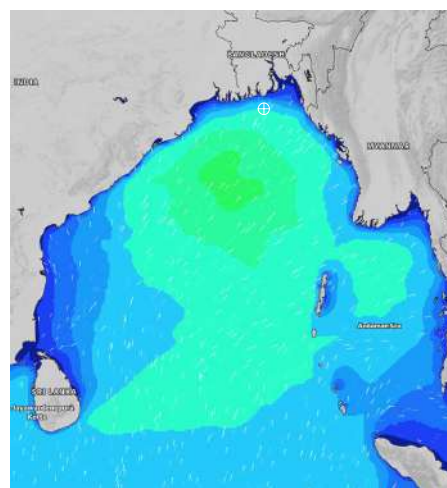
09 June 24 Sun (Probability 70%)



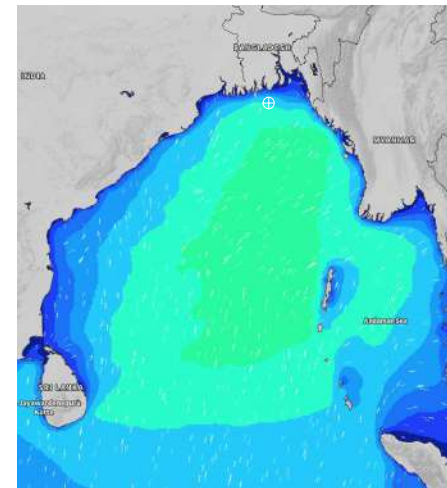
10 June 24 Mon (Probability 60%)



11 June 24 Tue (Probability 50%)



12 June 24 Wed (Probability 50%)



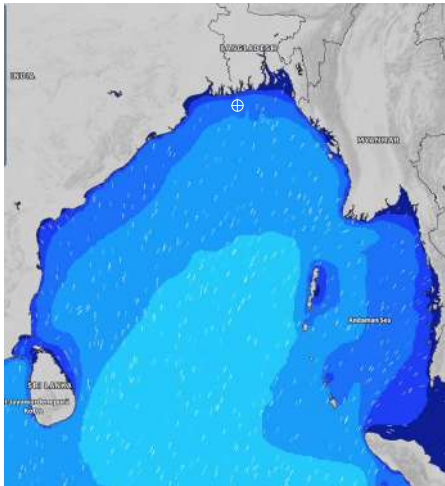
Significant wave height (m)

MARINE WEATHER FORECAST- 10 NM SOUTH OF MONGLA FAIRWAY (Lat 21° 16'N, Long 089° 34'E)

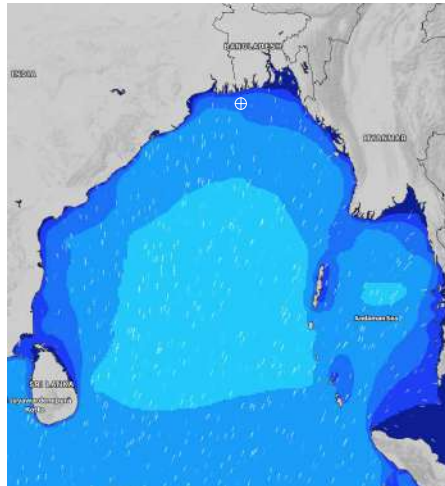
DATE : 05 to 12 June 2024

Date	Time	Max Wind Spd (kts)	Wind Direction	Wave Ht (m)	Sea State	Baro Pressure	Air Temp		Sea Surface Temp	Humidity (%)	Prob of Rain (%)	Sea State	Wave Ht (m)
							Max	Min					
05-06-24	0001	10	SW	1.7	4	1006	33	27	29	88%	22% (0.0 mm)	0	0
	0600	9	SSW	1.7	4	1006			29	92%	18% (0.0 mm)	1	0 - 0.1
	1200	10	SW	1.6	4	1007			30	81%	16% (0.0 mm)	2	0.1 - 0.5
	1800	10	SSW	1.6	4	1004			30	86%	20% (0.0 mm)	3	0.5 - 1.25
06-06-24	0001	17	SSW	1.6	4	1005	33	26	29	89%	30% (0.2 mm)	4	1.25 - 2.5
	0600	14	SW	1.6	4	1006			29	94%	19% (0.0 mm)	5	2.5 - 4.0
	1200	14	SSW	1.7	4	1006			30	82%	18% (0.0 mm)	6	4.0 - 6.0
	1800	16	SSW	1.7	4	1004			30	87%	15% (0.0 mm)	7	6.0 - 9.0
07-06-24	0001	24	SSW	2.2	4	1004	33	26	29	89%	32% (0.2 mm)	8	9.0 - 14.0
	0600	19	SW	2.4	4	1005			29	93%	21% (0.0 mm)	9	Over 14.0
	1200	20	SSW	2.3	4	1004			30	85%	15% (0.0 mm)		
	1800	21	SSW	2.3	4	1002			30	88%	16% (0.0 mm)		
08-06-24	0001	25	SSW	2.7	5	1003	33	26	29	89%	35% (0.2 mm)		
	0600	19	SW	2.7	5	1003			29	94%	26% (0.1 mm)		
	1200	22	SSW	2.6	5	1004			30	85%	18% (0.0 mm)		
	1800	21	SSW	2.6	5	1002			30	89%	17% (0.0 mm)		

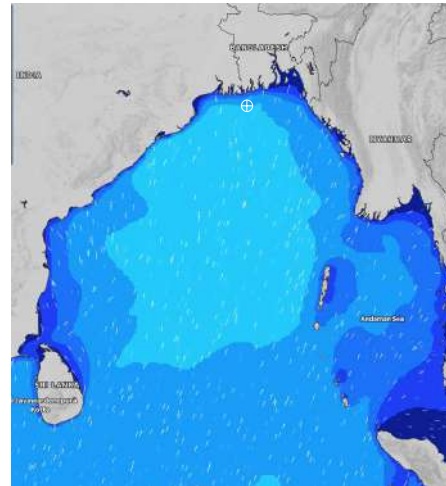
05 June 24 Wed (Probability 98%)



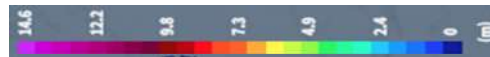
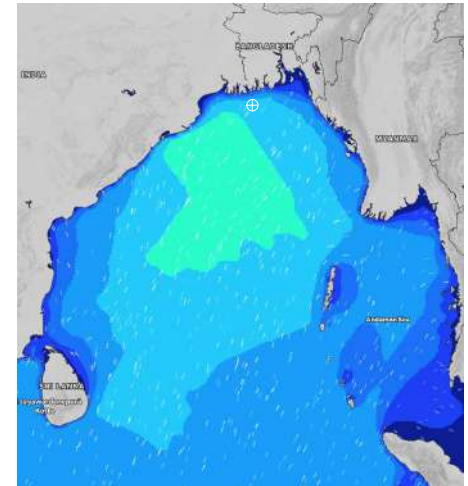
06 June 24 Thu (Probability 95%)



07 June 24 Fri (Probability 90%)



08 June 24 Sat (Probability 80%)

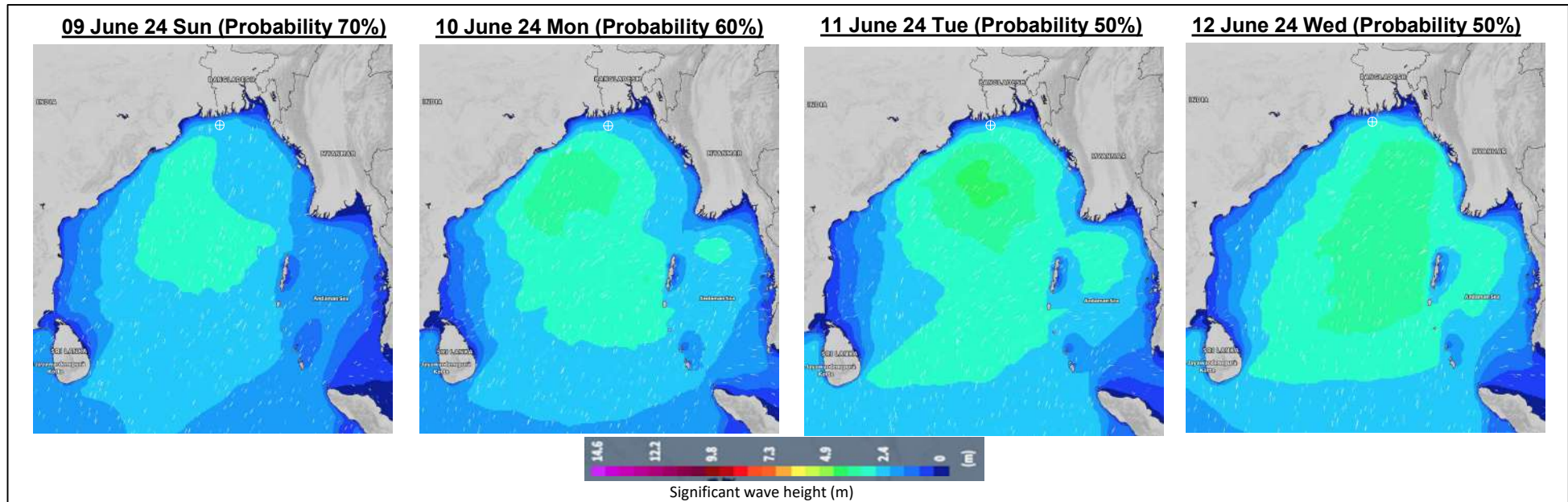


Significant wave height (m)

MARINE WEATHER FORECAST- 10 NM SOUTH OF MONGLA FAIRWAY (Lat 21° 16'N, Long 089° 34'E)

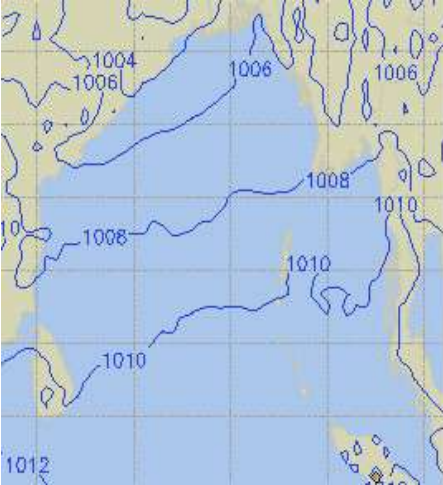
DATE : 05 to 12 June 2024

Date	Time	Max Wind Spd (kts)	Wind Direction	Wave Ht (m)	Sea State	Baro Pressure	Air Temp		Sea Surface Temp	Humidity (%)	Prob of Rain (%)	Sea State	Wave Ht (m)
							Max	Min					
09-06-24	0001	23	SSW	2.9	5	1001	32	26	29	91%	34% (0.2 mm)	0	0
	0600	20	SSW	2.7	5	1002			29	95%	22% (0.0 mm)	1	0 - 0.1
	1200	22	S	2.7	5	1001			30	86%	23% (0.0 mm)	2	0.1 - 0.5
	1800	22	SSW	2.6	5	1000			30	88%	15% (0.0 mm)	3	0.5 - 1.25
10-06-24	0001	19	S	2.6	5	1002	32	26	29	93%	31% (0.2 mm)	4	1.25 - 2.5
	0600	20	SSW	2.6	5	1002			29	96%	32% (0.2 mm)	5	2.5 - 4.0
	1200	18	SSW	2.7	5	1003			30	87%	24% (0.1 mm)	6	4.0 - 6.0
	1800	17	S	2.8	5	1001			30	89%	21% (0.0 mm)	7	6.0 - 9.0
11-06-24	0001	21	SSW	2.8	5	1000	32	26	29	92%	33% (0.2 mm)	8	9.0 - 14.0
	0600	20	SSW	2.8	5	1001			29	96%	35% (0.2 mm)	9	Over 14.0
	1200	14	WSW	3.0	5	1000			30	88%	24% (0.1 mm)		
	1800	10	SSE	3.1	5	1000			30	89%	26% (0.1 mm)		
12-06-24	0001	11	SSE	2.9	5	1000	32	26	29	94%	30% (0.2 mm)		
	0600	14	W	2.8	5	1001			29	96%	32% (0.2 mm)		
	1200	15	WSW	2.9	5	1000			30	85%	24% (0.1 mm)		
	1800	16	SSW	2.9	5	1000			30	88%	25% (0.1 mm)		

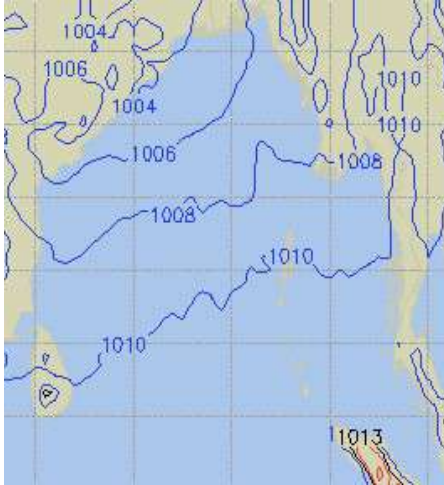


PREDICTED SURFACE PRESSURE FORECAST (05 to 11 June 2024)

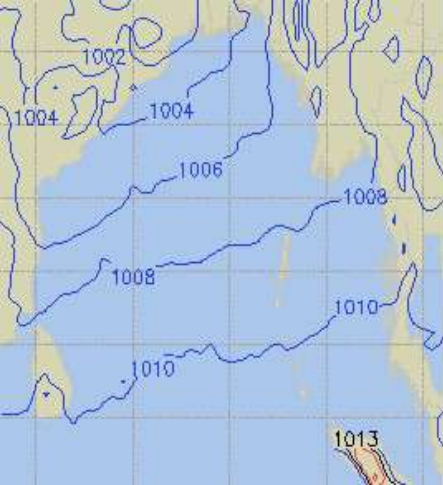
05 June 24 Wed (Probability 98%)



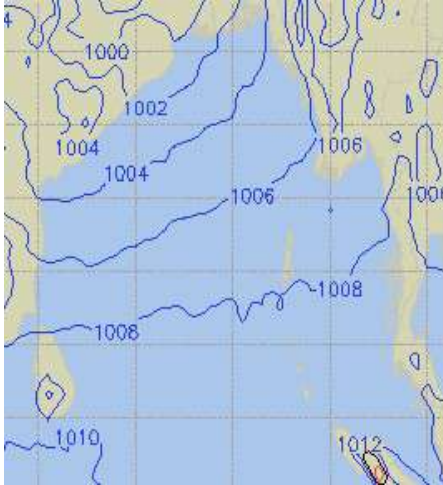
06 June 24 Thu (Probability 95%)



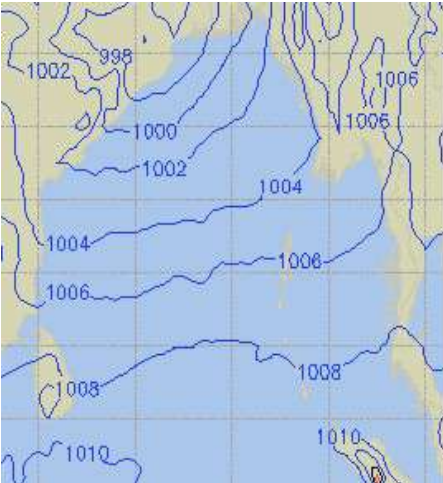
07 June 24 Fri (Probability 90%)



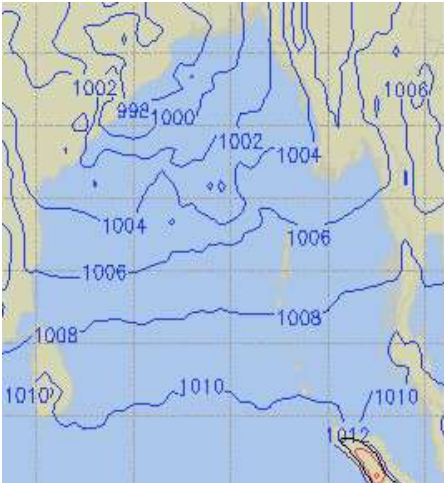
08 June 24 Sat (Probability 80%)



09 June 24 Sun (Probability 70%)



10 June 24 Mon (Probability 60%)



11 June 24 Tue (Probability 50%)

