



SUMMARY OF MARINE WEATHER FORECAST
COASTAL AREA OF BANGLADESH
DATE: 05 to 12 May 2026



Fleet Forecast	The trough of low persists from West Bengal to North Bay.
Wind Direction, Speed	South/South-westerly 10-15 kts, temporary gusting up to 20 kts.
Wave Height & Sea State	Ctg Outer Anchorage: 0.2 to 0.3 m (Sea state: 2) Abeam to Cox's Bazar: 0.6 to 1.0 m (Sea state: 3) St. Martin's Island: 0.6 to 1.0 m (Sea state 3) Payra Fairway Buoy: 0.6 to 1.1 m (Sea state: 3) Mongla Fairway Buoy: 0.7 to 1.1 m (Sea state: 3) Outer EEZ: 0.8 to 1.2 m (Sea state: 3)
Sea Surface Temperature	25° C - 29° C
Baro Pressure	1007-1011 mb
Rainfall	Partly Cloudy to cloudy sky with light to moderate rain/thunder showers with gusty wind is likely to occur over Bay of Bengal and adjoining area.
Fog & Visibility	Hazy condition over the Bay of Bengal & coastal area, Visibility 1.0 – 5.0 km

Marine Weather Outlook (05 to 12 May 2026):

- Partly Cloudy to cloudy sky with light to moderate rain/thunder showers with gusty wind is likely to occur over Bay of Bengal and adjoining area.
- Rainfall activity may decrease during the last period.
- Hazy condition over the Bay of Bengal & coastal area.



MARINE WEATHER FORECAST (05 to 12 May 2026) PATENGA POINT (22° 12' N, 091° 38' E)



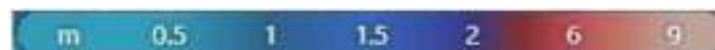
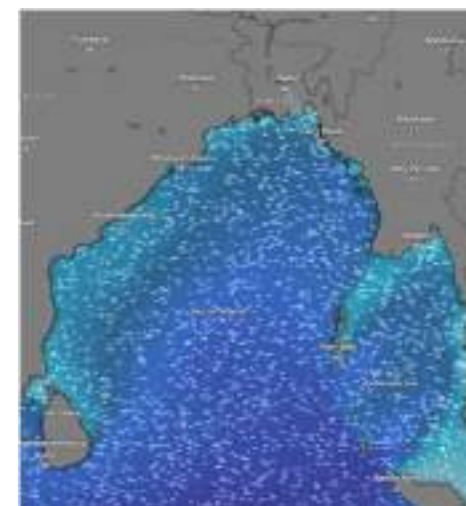
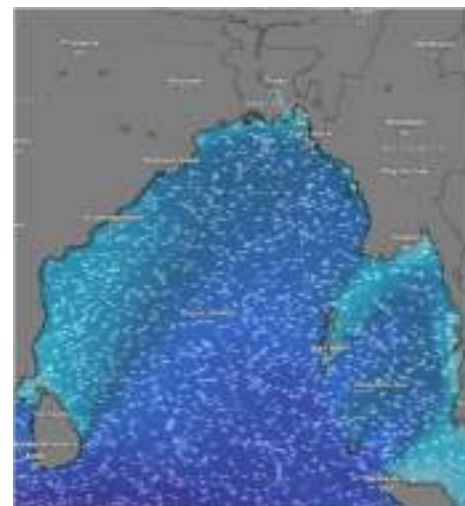
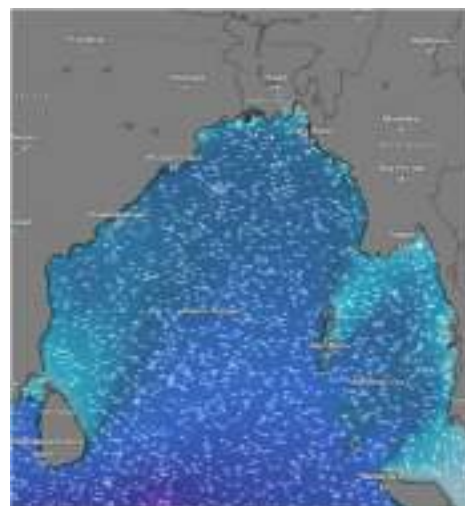
Date	Time	Air Temp (°C)		Sea Surface Temp (°C)	Baro Pressure (mbar)	Wind Direction	Wind Spd (kts)		Wave Ht (m)	Sea State	Humidity (%)	Prob of Rain (%)	Amount of Rain (mm)
		Max	Min				Gusting	Avg					
05-05-26 (Tuesday)	0001	31	25	26	1011	NE	07	04	0.2	2	89	10	0.0
	0600			25	1013	NE	07	04	0.2	2	90	15	0.0
	1200			29	1010	S	11	07	0.2	2	75	45	0.5
	1800			27	1009	SW	07	04	0.2	2	81	20	0.1
06-05-26 (Wednesday)	0001	32	26	26	1009	SW	11	07	0.2	2	89	22	0.1
	0600			25	1010	E	05	03	0.2	2	91	24	0.1
	1200			29	1008	SW	11	07	0.2	2	76	10	0.0
	1800			27	1007	SW	07	04	0.2	2	81	22	0.1
07-05-26 (Thursday)	0001	32	26	26	1008	SW	11	07	0.3	2	90	20	0.1
	0600			25	1009	SE	10	07	0.3	2	91	24	0.1
	1200			29	1007	SE	09	05	0.2	2	79	12	0.0
	1800			27	1006	SW	07	04	0.2	2	82	16	0.0
08-05-26 (Friday)	0001	31	26	26	1008	SW	05	03	0.2	2	89	12	0.0
	0600			25	1009	NE	07	04	0.2	2	91	20	0.1
	1200			29	1007	W	11	07	0.2	2	74	09	0.0
	1800			27	1006	W	07	04	0.2	2	80	22	0.1

05 May 2026

06 May 2026

07 May 2026

08 May 2026



Significant wave height (m)



MARINE WEATHER FORECAST (05 to 12 May 2026) PATENGA POINT (22° 12' N, 091° 38' E)



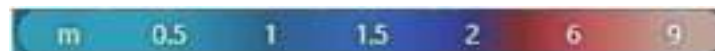
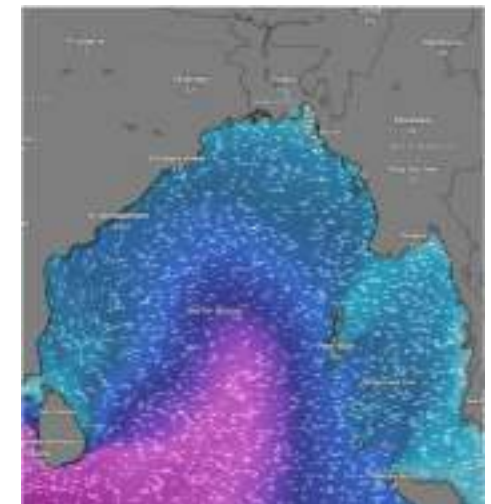
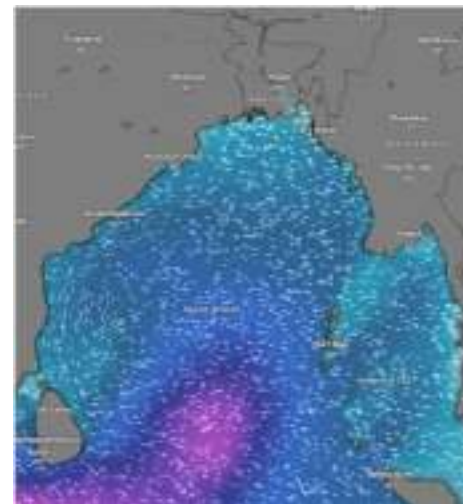
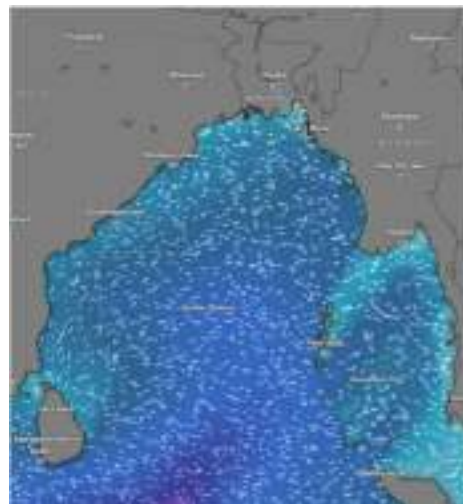
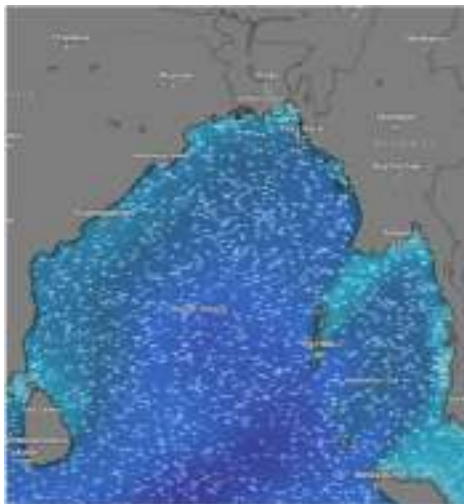
Date	Time	Air Temp (°C)		Sea Surface Temp (°C)	Baro Pressure (mbar)	Wind Direction	Wind Spd (kts)		Wave Ht (m)	Sea State	Humidity (%)	Prob of Rain (%)	Amount of Rain (mm)
		Max	Min				Gusting	Avg					
09-05-26 (Saturday)	0001	32	26	26	1008	NW	11	07	0.3	2	90	15	0.0
	0600			25	1009	NNW	10	06	0.2	2	91	13	0.0
	1200			29	1007	NW	12	08	0.2	2	69	10	0.0
	1800			27	1006	NW	11	07	0.2	2	77	12	0.0
10-05-26 (Sunday)	0001	30	25	26	1008	NNW	10	05	0.3	2	86	20	0.1
	0600			25	1009	NNW	07	04	0.2	2	89	24	0.1
	1200			29	1007	NW	12	08	0.2	2	77	10	0.0
	1800			27	1006	NW	10	06	0.3	2	87	20	0.1
11-05-26 (Monday)	0001	30	25	26	1008	W	10	06	0.3	2	88	42	0.4
	0600			25	1009	SW	09	05	0.2	2	91	35	0.3
	1200			29	1007	SSW	10	06	0.2	2	82	24	0.1
	1800			27	1006	NE	12	08	0.2	2	84	22	0.1
12-05-26 (Tuesday)	0001	30	25	26	1008	W	07	04	0.2	2	89	41	0.4
	0600			25	1009	N	05	03	0.2	2	90	40	0.4
	1200			29	1007	SSW	11	07	0.2	2	77	32	0.3
	1800			27	1006	SSW	10	06	0.2	2	86	24	0.1

09 May 2026

10 May 2026

11 May 2026

12 May 2026



Significant wave height (m)



MARINE WEATHER FORECAST (05 to 12 May 2026) ABEAM TO KUTUBDIA (21° 51' N, 091° 40' E)



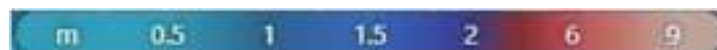
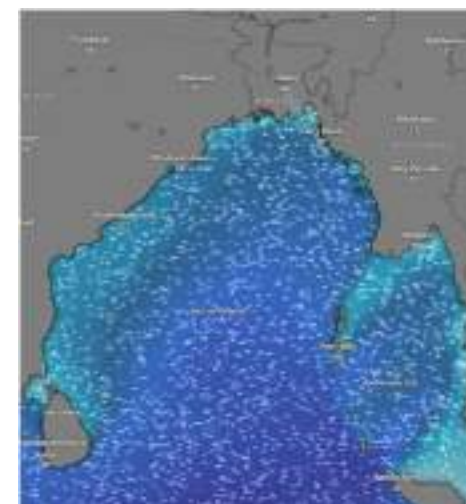
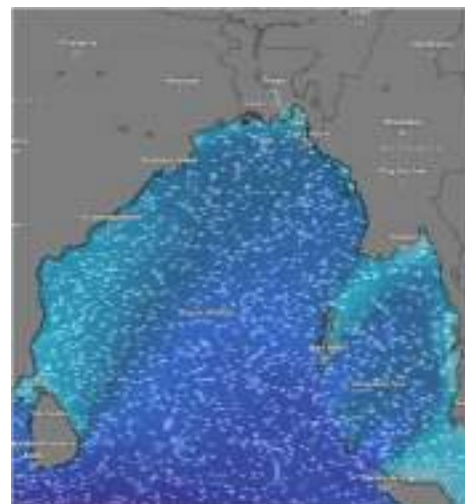
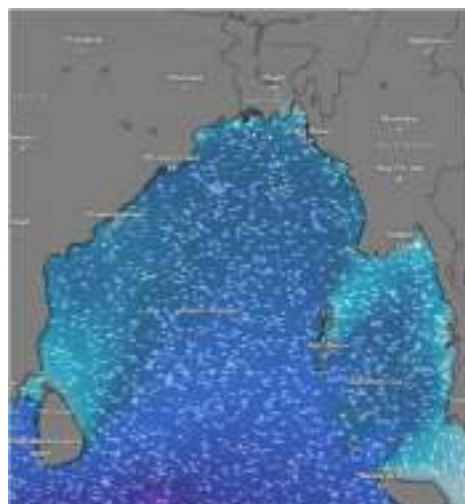
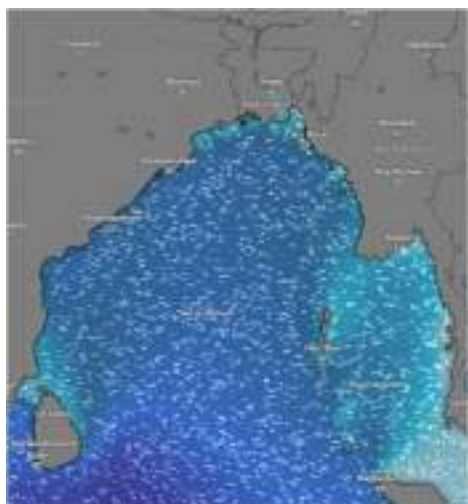
Date	Time	Air Temp (°C)		Sea Surface Temp (°C)	Baro Pressure (mbar)	Wind Direction	Wind Spd (kts)		Wave Ht (m)	Sea State	Humidity (%)	Prob of Rain (%)	Amount of Rain (mm)
		Max	Min				Gusting	Avg					
05-05-26 (Tuesday)	0001	31	25	26	1011	NE	09	05	0.4	2	89	10	0.0
	0600			25	1013	NE	09	05	0.4	2	91	15	0.0
	1200			29	1010	S	07	04	0.3	2	74	09	0.0
	1800			27	1009	W	10	06	0.3	2	83	20	0.1
06-05-26 (Wednesday)	0001	32	26	26	1009	W	14	10	0.4	2	88	22	0.1
	0600			25	1010	SE	07	04	0.4	2	91	24	0.1
	1200			29	1008	SSW	09	05	0.3	2	76	10	0.0
	1800			27	1007	SW	10	06	0.3	2	81	22	0.1
07-05-26 (Thursday)	0001	32	26	26	1008	SW	13	09	0.4	2	90	20	0.1
	0600			25	1009	SE	11	07	0.4	2	91	24	0.1
	1200			29	1007	W	05	03	0.4	2	79	12	0.0
	1800			27	1006	W	07	04	0.3	2	82	16	0.0
08-05-26 (Friday)	0001	31	26	26	1008	W	10	06	0.3	2	89	12	0.0
	0600			25	1009	NE	11	06	0.4	2	91	20	0.1
	1200			29	1007	NW	07	04	0.3	2	74	09	0.0
	1800			27	1006	NW	11	07	0.4	2	80	22	0.1

05 May 2026

06 May 2026

07 May 2026

08 May 2026



Significant wave height (m)

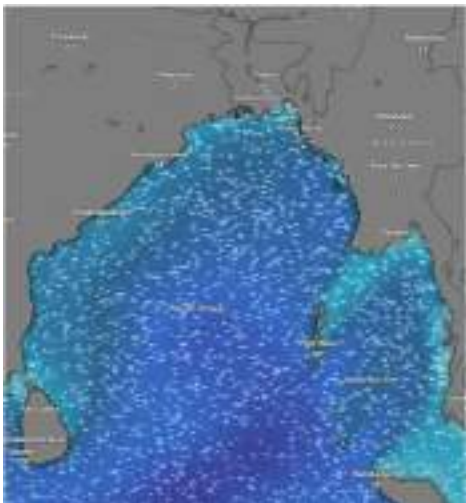


MARINE WEATHER FORECAST (05 to 12 May 2026) ABEAM TO KUTUBDIA (21° 51' N, 091° 40' E)

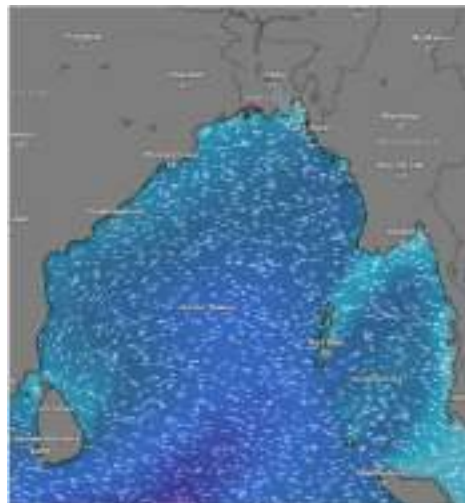


Date	Time	Air Temp (°C)		Sea Surface Temp (°C)	Baro Pressure (mbar)	Wind Direction	Wind Spd (kts)		Wave Ht (m)	Sea State	Humidity (%)	Prob of Rain (%)	Amount of Rain (mm)
		Max	Min				Gusting	Avg					
09-05-26 (Saturday)	0001	32	26	26	1008	NW	13	09	0.3	2	90	15	0.0
	0600			25	1009	N	14	10	0.4	2	91	13	0.0
	1200			29	1007	NNW	12	08	0.4	2	69	10	0.0
	1800			27	1006	NW	13	09	0.4	2	77	12	0.0
10-05-26 (Sunday)	0001	30	25	26	1008	NW	13	09	0.4	2	86	20	0.1
	0600			25	1009	N	10	07	0.3	2	89	24	0.1
	1200			29	1007	NW	13	09	0.3	2	77	10	0.0
	1800			27	1006	NW	09	05	0.4	2	87	20	0.1
11-05-26 (Monday)	0001	30	25	26	1008	W	11	07	0.3	2	88	42	0.4
	0600			25	1009	SW	05	04	0.3	2	91	35	0.3
	1200			29	1007	SSW	10	06	0.3	2	82	24	0.1
	1800			27	1006	W	09	05	0.3	2	84	22	0.1
12-05-26 (Tuesday)	0001	30	25	26	1008	SW	05	03	0.2	2	89	41	0.4
	0600			25	1009	E	07	04	0.3	2	90	40	0.4
	1200			29	1007	SSW	13	09	0.4	2	77	32	0.3
	1800			27	1006	S	12	08	0.4	2	86	24	0.1

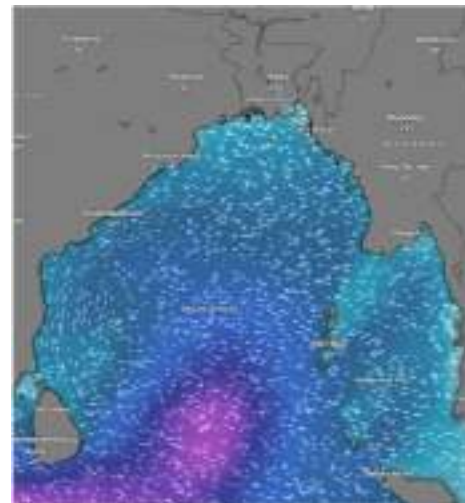
09 May 2026



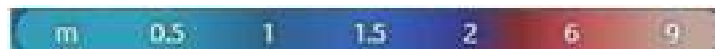
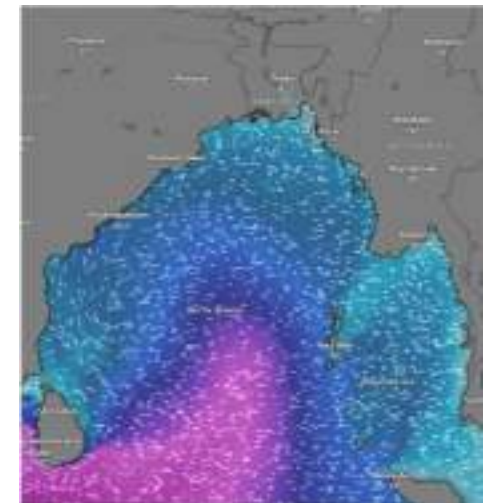
10 May 2026



11 May 2026



12 May 2026



Significant wave height (m)

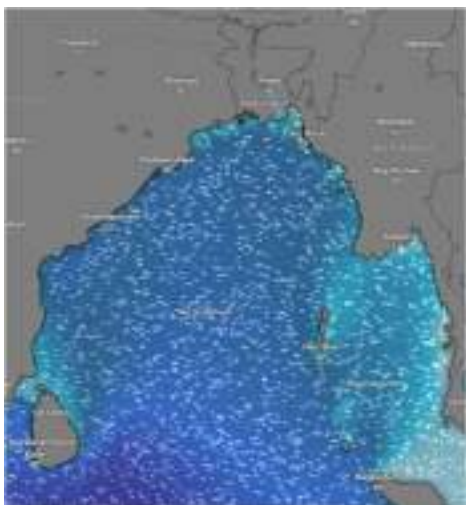


MARINE WEATHER FORECAST (05 to 12 May 2026) ABEAM TO ELEPHANT POINT (21° 11' N, 091° 52' E)

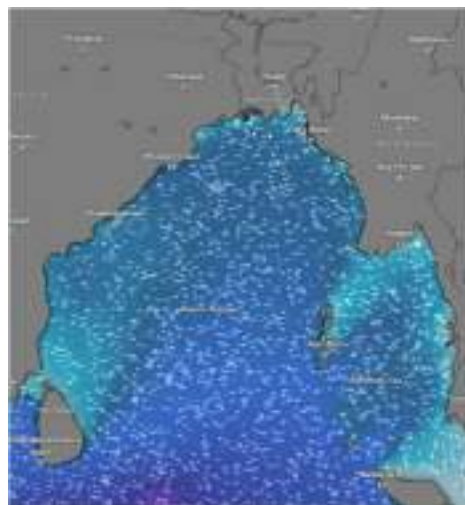


Date	Time	Air Temp (°C)		Sea Surface Temp (°C)	Baro Pressure (mbar)	Wind Direction	Wind Spd (kts)		Wave Ht (m)	Sea State	Humidity (%)	Prob of Rain (%)	Amount of Rain (mm)
		Max	Min				Gusting	Avg					
05-05-26 (Tuesday)	0001	31	25	26	1011	NE	07	04	1.0	3	89	10	0.0
	0600			25	1013	NE	09	05	0.9	3	90	15	0.0
	1200			29	1010	W	10	06	0.9	3	75	09	0.0
	1800			27	1009	NW	11	07	0.8	3	81	20	0.1
06-05-26 (Wednesday)	0001	32	26	26	1009	NW	12	08	0.8	3	89	22	0.1
	0600			25	1010	SE	09	05	0.8	3	91	24	0.1
	1200			29	1008	SW	09	05	0.8	3	76	10	0.0
	1800			27	1007	SW	11	07	0.8	3	81	22	0.1
07-05-26 (Thursday)	0001	32	26	26	1008	SW	12	08	0.8	3	90	20	0.1
	0600			25	1009	NNW	13	09	0.9	3	91	24	0.1
	1200			29	1007	NNW	09	05	0.9	3	79	12	0.0
	1800			27	1006	NW	10	06	0.9	3	82	16	0.0
08-05-26 (Friday)	0001	31	26	26	1008	W	10	06	0.9	3	89	12	0.0
	0600			25	1009	N	12	08	0.9	3	91	20	0.1
	1200			29	1007	NNW	11	07	0.9	3	74	09	0.0
	1800			27	1006	NNW	13	09	0.9	3	80	22	0.1

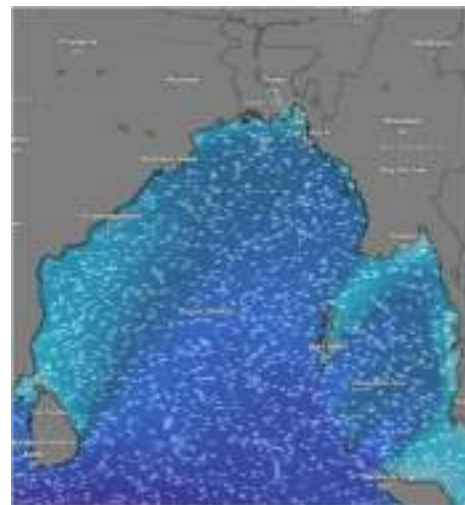
05 May 2026



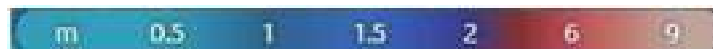
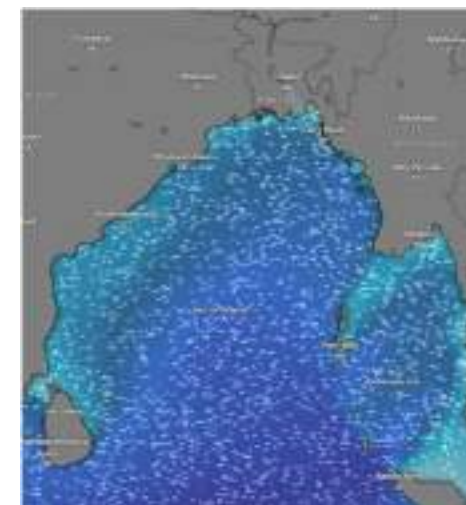
06 May 2026



07 May 2026



08 May 2026



Significant wave height (m)

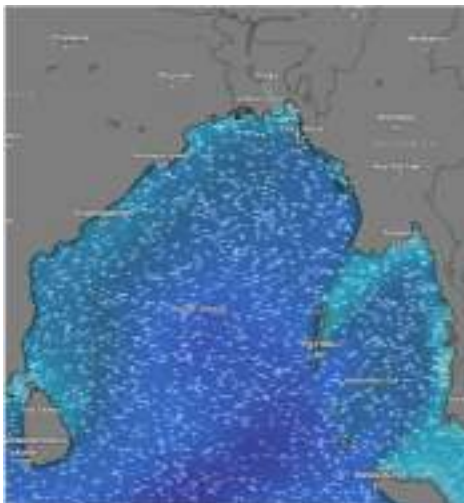


MARINE WEATHER FORECAST (05 to 12 May 2026) ABEAM TO ELEPHANT POINT (21° 11' N, 091° 52' E)

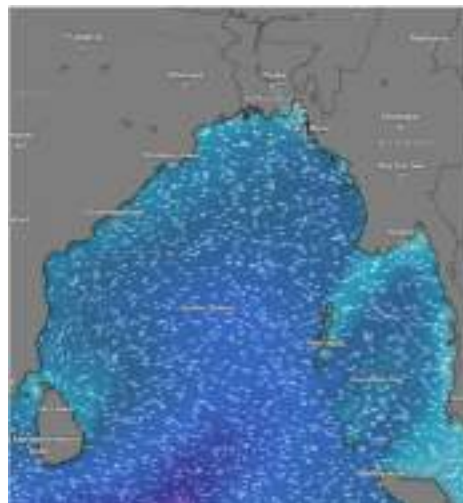


Date	Time	Air Temp (°C)		Sea Surface Temp (°C)	Baro Pressure (mbar)	Win Direction	Wind Spd (kts)		Wave Ht (m)	Sea State	Humidity (%)	Prob of Rain (%)	Amount of Rain (mm)
		Max	Min				Gusting	Avg					
09-05-26 (Saturday)	0001	32	26	26	1008	NNW	14	10	0.9	3	90	15	0.0
	0600			25	1009	N	11	07	0.9	3	91	13	0.0
	1200			29	1007	NNW	14	10	0.9	3	69	10	0.0
	1800			27	1006	NW	16	12	0.9	3	77	12	0.0
10-05-26 (Sunday)	0001	30	25	26	1008	NNW	17	13	0.9	3	86	20	0.1
	0600			25	1009	N	13	09	0.8	3	89	24	0.1
	1200			29	1007	NNW	15	11	0.8	3	77	10	0.0
	1800			27	1006	NW	12	08	0.8	3	87	20	0.1
11-05-26 (Monday)	0001	30	25	26	1008	SW	09	05	0.7	3	88	42	0.4
	0600			25	1009	SSE	07	04	0.7	3	91	35	0.3
	1200			29	1007	SSE	11	07	0.6	3	82	24	0.1
	1800			27	1006	S	10	06	0.6	3	84	22	0.1
12-05-26 (Tuesday)	0001	30	25	26	1008	SSW	05	03	0.6	3	89	41	0.4
	0600			25	1009	SE	11	07	0.7	3	90	40	0.4
	1200			29	1007	SSE	15	11	0.7	3	77	32	0.3
	1800			27	1006	SSE	13	09	0.8	3	86	24	0.1

09 May 2026



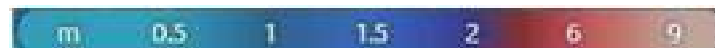
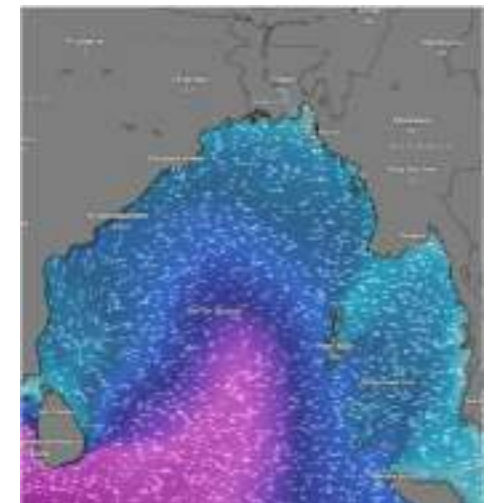
10 May 2026



11 May 2026



12 May 2026



Significant wave height (m)



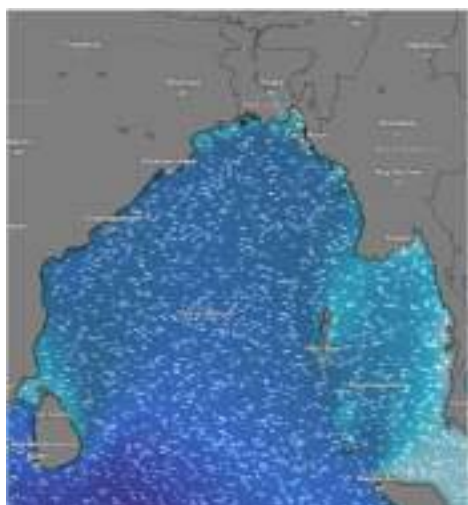
MARINE WEATHER FORECAST (05 to 12 May 2026)

ABEAM TO ST. MARTIN'S LIGHT HOUSE (20° 37' N, 092° 08' E)

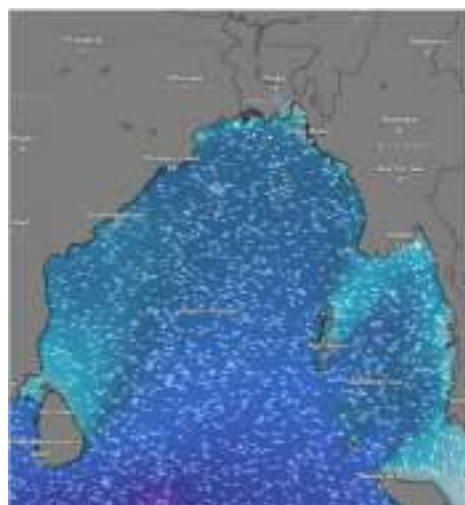


Date	Time	AirTemp (°C)		Sea Surface Temp (°C)	Baro Pressure (mbar)	Wind Direction	Wind Spd (kts)		Wave Ht (m)	Sea State	Humidity (%)	Prob of Rain (%)	Amount of Rain (mm)
		Max	Min				Gusting	Avg					
05-05-26 (Tuesday)	0001	31	25	26	1011	NE	07	04	1.0	3	92	24	0.1
	0600			25	1013	NE	05	03	0.9	3	93	33	0.3
	1200			29	1010	NW	11	07	0.9	3	79	16	0.0
	1800			27	1009	NW	11	07	0.9	3	86	18	0.0
06-05-26 (Wednesday)	0001	32	26	26	1009	NW	12	08	0.9	3	92	32	0.3
	0600			25	1010	NE	05	03	0.8	3	93	37	0.4
	1200			29	1008	NW	09	05	0.8	3	81	18	0.0
	1800			27	1007	SW	11	07	0.9	3	85	10	0.0
07-05-26 (Thursday)	0001	32	26	26	1008	SW	10	06	0.9	3	92	59	0.6
	0600			25	1009	NNW	09	05	0.9	3	93	43	0.5
	1200			29	1007	SW	09	05	0.9	3	80	15	0.0
	1800			27	1006	W	10	06	0.9	3	87	37	0.4
08-05-26 (Friday)	0001	31	26	26	1008	NW	12	08	0.9	3	90	42	0.4
	0600			25	1009	N	14	10	1.0	3	91	36	0.4
	1200			29	1007	NW	12	08	1.0	3	85	20	0.0
	1800			27	1006	NW	15	11	1.0	3	88	29	0.3

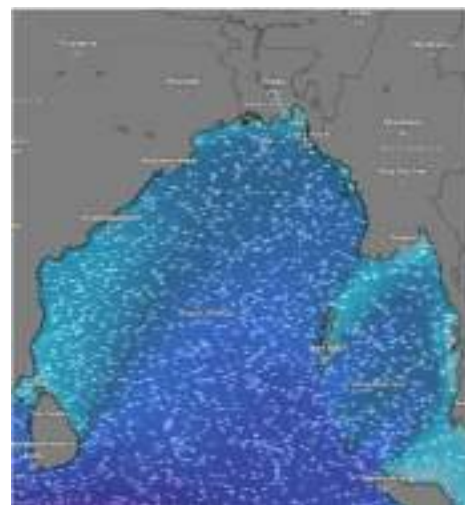
05 May 2026



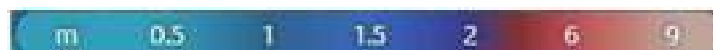
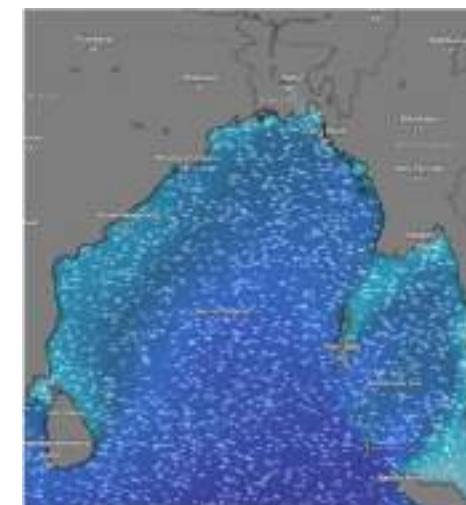
06 May 2026



07 May 2026



08 May 2026



Significant wave height (m)

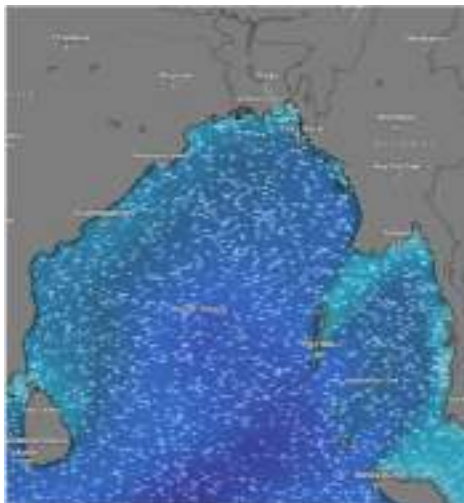


MARINE WEATHER FORECAST (05 to 12 May 2026) ABEAM TO ST. MARTIN'S LIGHT HOUSE (20° 37' N, 092° 08' E)

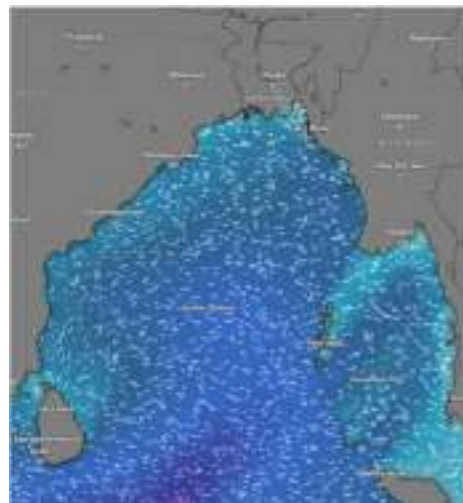


Date	Time	Air Temp (°C)		Sea Surface Temp (°C)	Baro Pressure (mbar)	Wind Direction	Wind Spd (kts)		Wave Ht (m)	Sea State	Humidity (%)	Prob of Rain (%)	Amount of Rain (mm)
		Max	Min				Gusting	Avg					
09-05-26 (Saturday)	0001	32	26	26	1008	NW	15	11	1.0	3	90	15	0.0
	0600			25	1009	N	14	10	1.0	3	91	13	0.0
	1200			29	1007	NNW	15	11	1.0	3	69	10	0.0
	1800			27	1006	NW	14	10	1.0	3	77	12	0.0
10-05-26 (Sunday)	0001	30	25	26	1008	NW	13	09	0.9	3	86	20	0.1
	0600			25	1009	N	09	05	0.8	3	89	24	0.1
	1200			29	1007	W	10	06	0.8	3	77	10	0.0
	1800			27	1006	W	09	05	0.8	3	87	20	0.1
11-05-26 (Monday)	0001	30	25	26	1008	W	07	04	0.8	3	88	42	0.4
	0600			25	1009	NE	09	05	0.7	3	91	35	0.3
	1200			29	1007	SSE	10	06	0.7	3	82	24	0.1
	1800			27	1006	SSE	07	04	0.6	3	84	22	0.1
12-05-26 (Tuesday)	0001	30	25	26	1008	SSE	09	05	0.8	3	89	41	0.4
	0600			25	1009	SE	13	09	0.7	3	90	40	0.4
	1200			29	1007	SSE	12	08	0.8	3	77	32	0.3
	1800			27	1006	SSE	11	07	0.8	3	86	24	0.1

09 May 2026



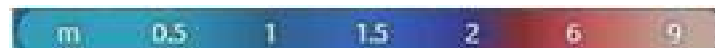
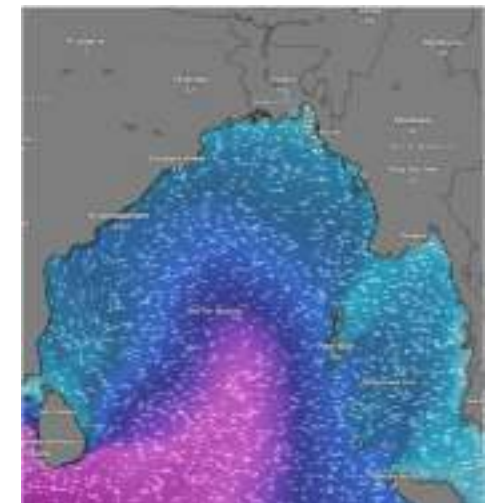
10 May 2026



11 May 2026



12 May 2026



Significant wave height (m)



MARINE WEATHER FORECAST (05 to 12 May 2026)



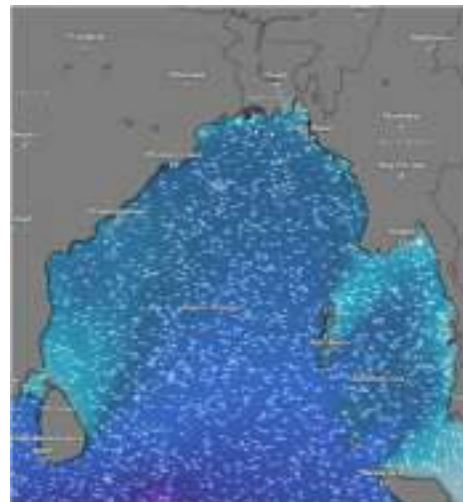
PAYRA FAIRWAY (21° 22' N, 090° 6' E)

Date	Time	Air Temp (°C)		Sea Surface Temp (°C)	Baro Pressure (mbar)	Wind Direction	Wind Spd (kts)		Wave Ht (m)	Sea State	Humidity (%)	Prob of Rain (%)	Amount of Rain (mm)
		Max	Min				Gusting	Avg					
05-05-26 (Tuesday)	0001	30	25	26	1011	SSW	07	04	1.1	3	89	10	0.0
	0600			25	1013	W	05	03	1.0	3	90	15	0.0
	1200			29	1010	SSE	16	12	1.0	3	75	09	0.0
	1800			27	1009	SSW	11	07	1.0	3	81	20	0.1
06-05-26 (Wednesday)	0001	31	25	26	1009	W	07	04	0.9	3	89	22	0.1
	0600			25	1010	SW	10	06	0.9	3	91	24	0.1
	1200			29	1008	SSW	09	05	1.0	3	76	10	0.0
	1800			27	1007	SSW	09	05	0.9	3	81	22	0.1
07-05-26 (Thursday)	0001	31	26	26	1008	SW	15	11	1.0	3	90	20	0.1
	0600			25	1009	W	07	04	1.0	3	91	24	0.1
	1200			29	1007	SW	05	03	0.9	3	79	12	0.0
	1800			27	1006	SW	09	05	0.9	3	82	16	0.0
08-05-26 (Friday)	0001	31	26	26	1008	SSW	10	06	0.9	3	89	12	0.0
	0600			25	1009	W	07	04	0.9	3	91	20	0.1
	1200			29	1007	W	05	03	0.9	3	74	09	0.0
	1800			27	1006	NNW	09	05	0.9	3	80	22	0.1

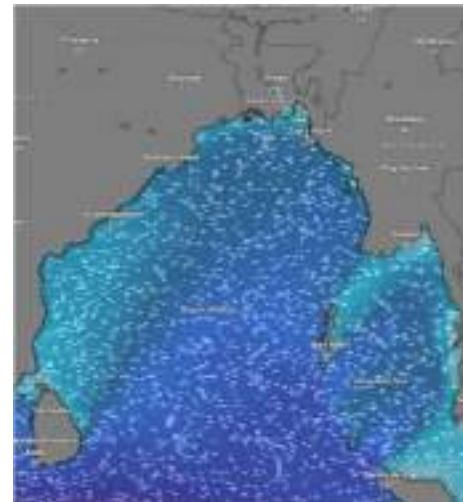
05 May 2026



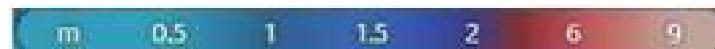
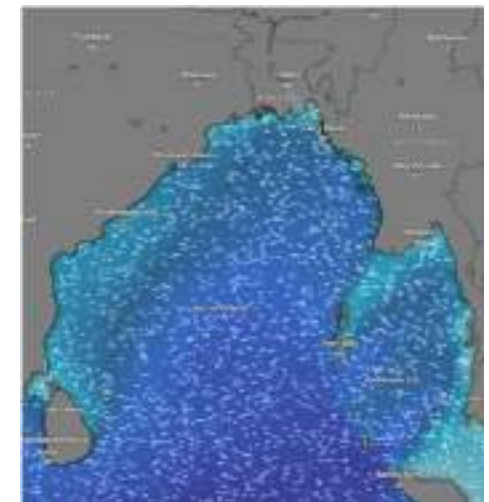
06 May 2026



07 May 2026



08 May 2026



Significant wave height (m)



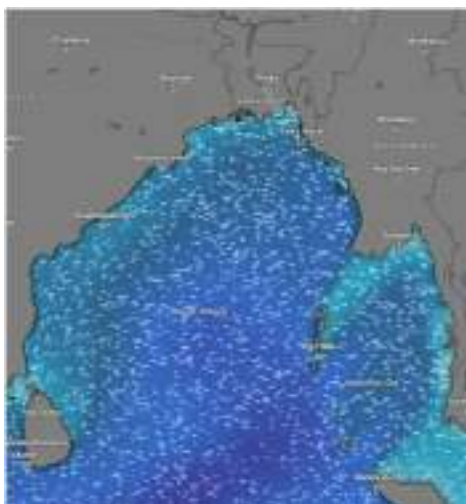
MARINE WEATHER FORECAST (05 to 12 May 2026)



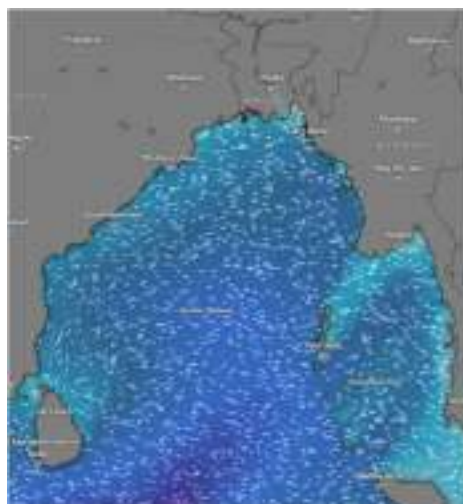
PAYRA FAIRWAY (21° 22' N, 090° 6' E)

Date	Time	Air Temp (°C)		Sea Surface Temp (°C)	Baro Pressure (mbar)	Wind Direction	Wind Spd (kts)		Wae Ht (m)	Sea State	Humidity (%)	Prob of Rain (%)	Amount of Rain (mm)
		Max	Min				Gusting	Avg					
09-05-26 (Saturday)	0001	32	26	26	1008	NW	10	06	0.9	3	90	20	0.0
	0600			25	1009	NW	09	05	0.9	3	91	13	0.0
	1200			29	1007	NNW	09	05	0.9	3	69	10	0.0
	1800			27	1006	W	10	06	0.9	3	77	12	0.0
10-05-26 (Sunday)	0001	30	25	26	1008	NW	12	08	0.9	3	86	20	0.1
	0600			25	1009	NNW	09	05	0.8	3	89	24	0.1
	1200			29	1007	NNW	10	06	0.8	3	77	10	0.0
	1800			27	1006	W	11	07	0.9	3	87	20	0.1
11-05-26 (Monday)	0001	30	25	26	1008	SW	09	05	0.7	3	88	42	0.4
	0600			25	1009	W	07	04	0.7	3	91	35	0.3
	1200			29	1007	SSE	11	07	0.6	3	82	24	0.1
	1800			27	1006	SSE	10	06	0.6	3	84	22	0.1
12-05-26 (Tuesday)	0001	30	25	26	1008	SSW	07	04	0.6	3	89	41	0.4
	0600			25	1009	SE	09	05	0.7	3	90	40	0.4
	1200			29	1007	S	14	10	0.8	3	77	32	0.3
	1800			27	1006	S	12	08	0.9	3	86	24	0.1

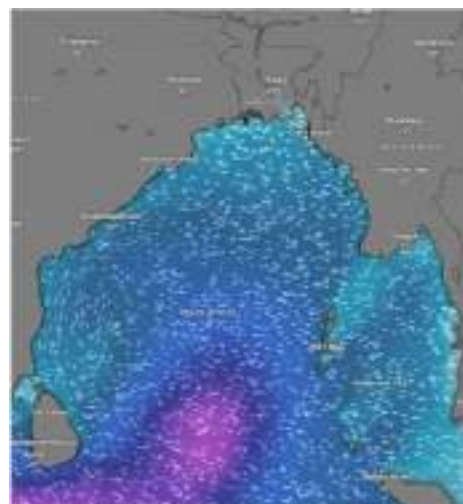
09 May 2026



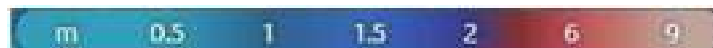
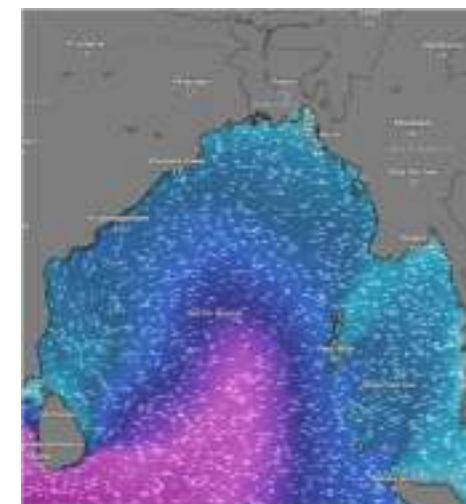
10 May 2026



11 May 2026



12 May 2026



Significant wave height (m)



MARINE WEATHER FORECAST (05 to 12 May 2026)

MONGLA FAIRWAY (21° 26' N, 089° 34' E)



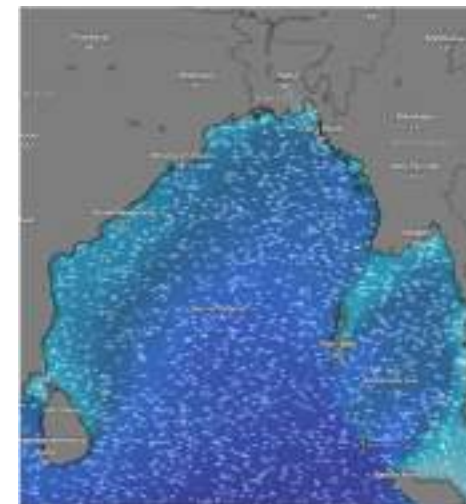
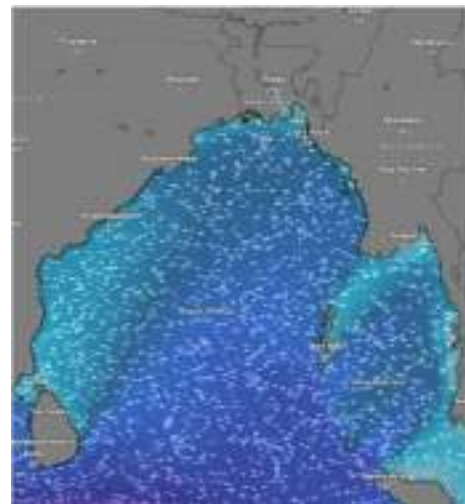
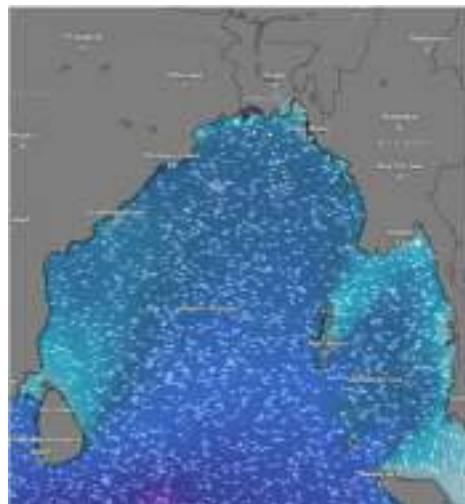
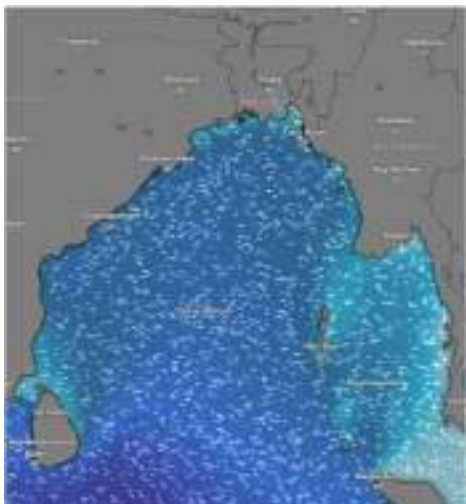
Date	Time	Air Temp (°C)		Sea Surface Temp (°C)	Baro Pressure (mbar)	Wind Direction	Wind Spd (kts)		Wave Ht (m)	Sea State	Humidity (%)	Prob of Rain (%)	Amount of Rain (mm)
		Max	Min				Gusting	Avg					
05-05-26 (Tuesday)	0001	30	25	26	1011	S	11	07	1.1	3	92	34	0.1
	0600			25	1013	W	15	11	1.1	3	93	24	0.3
	1200			29	1010	SSE	14	10	1.1	3	79	13	0.0
	1800			27	1009	SSE	13	09	1.0	3	86	16	0.0
06-05-26 (Wednesday)	0001	31	25	26	1009	SSE	12	08	1.0	3	92	32	0.3
	0600			25	1010	SW	09	05	1.0	3	93	37	0.4
	1200			29	1008	SSW	10	06	0.9	3	81	18	0.0
	1800			27	1007	SSW	14	04	0.9	3	85	10	0.0
07-05-26 (Thursday)	0001	31	25	26	1008	SW	16	12	0.9	3	92	59	0.6
	0600			25	1009	SW	10	06	1.1	3	93	43	0.5
	1200			29	1007	SW	09	05	1.0	3	80	15	0.0
	1800			27	1006	SSW	11	07	1.0	3	87	37	0.4
08-05-26 (Friday)	0001	31	26	26	1008	S	13	09	1.0	3	90	53	0.5
	0600			25	1009	NNW	12	08	1.0	3	94	45	0.5
	1200			29	1007	SW	09	05	1.0	3	85	21	0.1
	1800			27	1006	SW	11	07	1.1	3	88	34	0.3

05 May 2026

06 May 2026

07 May 2026

08 May 2026



Significant wave height (m)



MARINE WEATHER FORECAST (05 to 12 May 2026)

MONGLA FAIRWAY (21° 26' N, 089° 34' E)



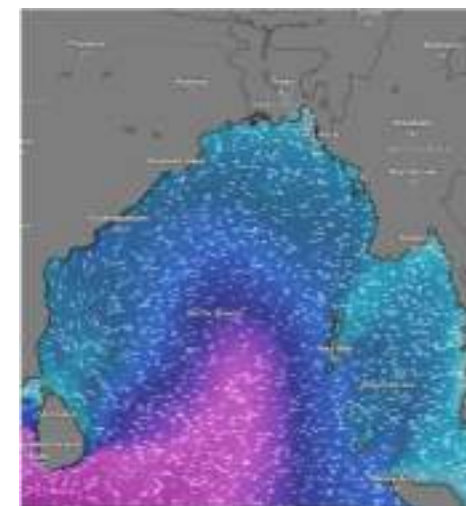
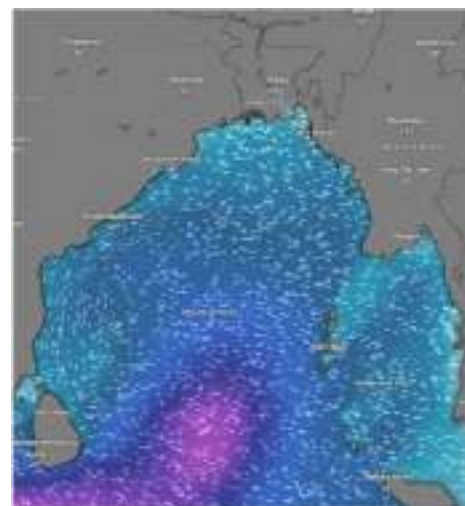
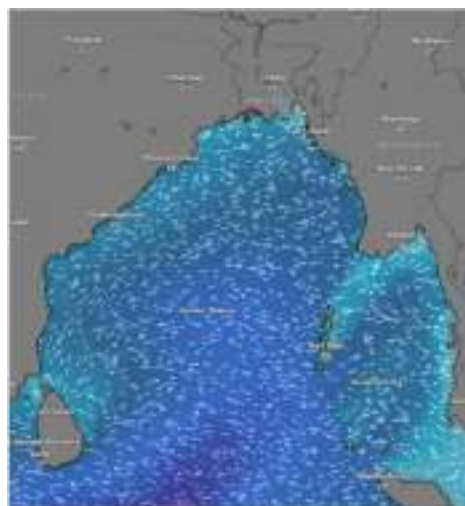
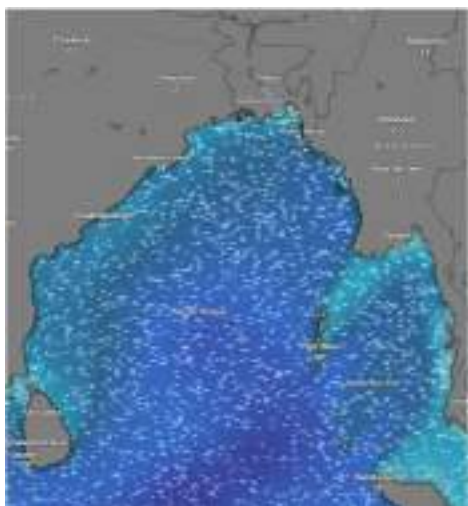
Date	Time	Air Temp (°C)		Sea Surface Temp (°C)	Baro Pressure (mbar)	Wind Direction	Wind Spd (kts)		Wave Ht (m)	Sea State	Humidity (%)	Prob of Rain (%)	Amount of Rain (mm)
		Max	Min				Gusting	Avg					
09-05-26 (Saturday)	0001	32	26	26	1008	NW	10	05	0.9	3	86	53	0.5
	0600			25	1009	W	11	06	0.9	3	90	45	0.5
	1200			29	1007	W	07	04	0.9	3	84	21	0.1
	1800			27	1006	SSW	09	05	0.9	3	87	34	0.3
10-05-26 (Sunday)	0001	30	25	26	1008	SW	10	06	0.9	3	86	53	0.5
	0600			25	1009	W	09	05	0.8	3	90	45	0.5
	1200			29	1007	N	07	04	0.8	3	84	21	0.1
	1800			27	1006	SW	12	08	0.8	3	87	34	0.3
11-05-26 (Monday)	0001	30	25	26	1008	SSW	10	06	0.7	3	86	53	0.5
	0600			25	1009	SW	09	05	0.7	3	90	45	0.5
	1200			29	1007	SSE	13	09	0.7	3	84	21	0.1
	1800			27	1006	SE	13	09	0.7	3	87	34	0.3
12-05-26 (Tuesday)	0001	30	25	26	1008	S	10	06	0.7	3	86	53	0.5
	0600			25	1009	SSE	11	07	0.8	3	90	45	0.5
	1200			29	1007	SSE	18	14	0.9	3	84	21	0.1
	1800			27	1006	S	14	10	0.9	3	87	34	0.3

09 May 2026

10 May 2026

11 May 2026

12 May 2026



Significant wave height (m)



MARINE WEATHER FORECAST (05 to 12 May 2026) OUTER EEZ (18° 48' N, 090° 30' E)

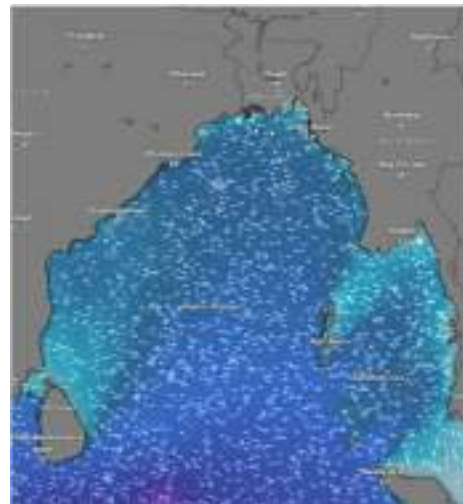


Date	Time	Air Temp (°C)		Sea Surface Temp (°C)	Baro Pressure (mbar)	Wind Direction	Wind Spd (kts)		Wave Ht (m)	Sea State	Humidity (%)	Prob of Rain (%)	Amount of Rain (mm)
		Max	Min				Gusting	Avg					
05-05-26 (Tuesday)	0001	30	25	26	1011	SSW	07	04	1.1	3	90	40	0.4
	0600			25	1013	SSE	05	03	1.1	3	92	52	0.5
	1200			29	1010	SSW	05	03	1.0	3	83	24	0.1
	1800			27	1009	SSW	12	08	1.0	3	86	34	0.3
06-05-26 (Wednesday)	0001	30	25	26	1009	SW	11	07	1.1	3	89	12	0.0
	0600			25	1010	S	12	08	1.1	3	90	24	0.1
	1200			29	1008	SSW	12	08	1.0	3	74	10	0.0
	1800			27	1007	SSW	10	06	1.0	3	87	20	0.0
07-05-26 (Thursday)	0001	30	26	26	1008	SW	11	07	1.1	3	90	12	0.0
	0600			25	1009	W	14	10	1.0	3	93	24	0.1
	1200			29	1007	NNW	09	05	1.1	3	82	10	0.0
	1800			27	1006	SW	07	04	1.0	3	87	20	0.0
08-05-26 (Friday)	0001	30	26	26	1008	SW	05	03	1.1	3	90	12	0.0
	0600			25	1009	W	07	04	1.0	3	93	24	0.1
	1200			29	1007	NNW	10	06	1.1	3	82	10	0.0
	1800			27	1006	SW	07	04	1.0	3	87	20	0.0

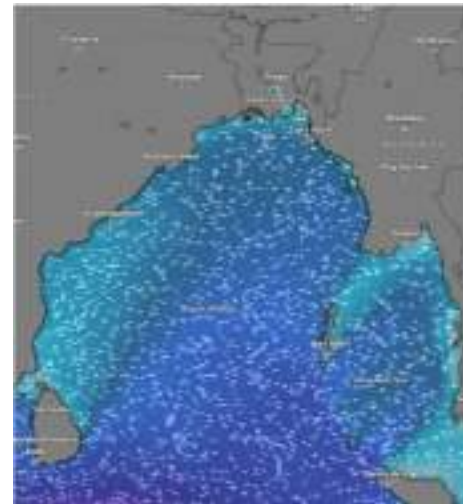
05 May 2026



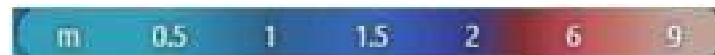
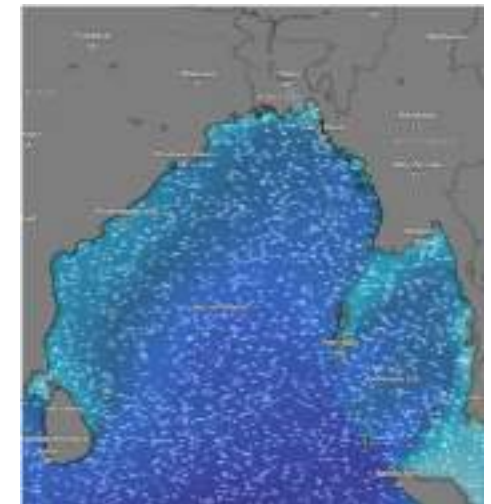
06 May 2026



07 May 2026



08 May 2026



Significant wave height (m)



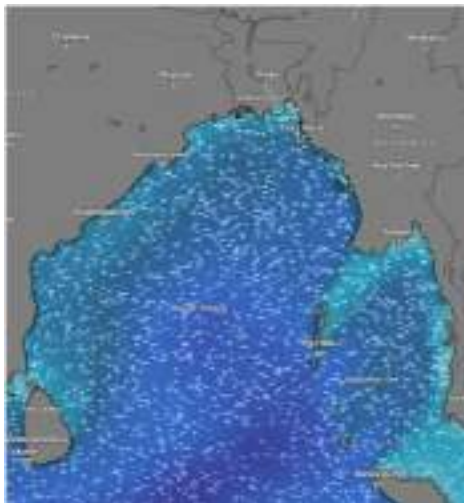
MARINE WEATHER FORECAST (05 to 12 May 2026)

OUTER EEZ (18° 48' N, 090° 30' E)

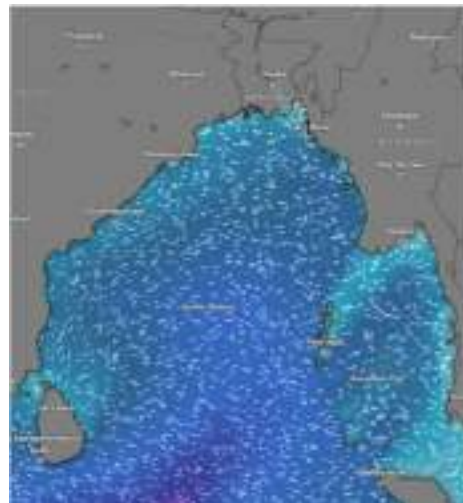


Date	Time	Air Temp (°C)		Sea Surface Temp (°C)	Baro Pressure (mbar)	Wind Direction	Wind Spd (kts)		Wave Ht (m)	Sea State	Humidity (%)	Prob of Rain (%)	Amount of Rain (mm)
		Max	Min				Gusting	Avg					
09-05-26 (Saturday)	0001	32	26	26	1008	SW	09	05	1.1	3	90	36	0.4
	0600			25	1009	W	12	08	1.1	3	92	41	0.4
	1200			29	1007	W	10	06	1.1	3	85	22	0.0
	1800			27	1006	W	11	07	1.1	3	89	24	0.1
10-05-26 (Sunday)	0001	30	25	26	1008	NNW	16	12	1.0	3	90	36	0.4
	0600			25	1009	NNE	10	06	1.0	3	92	41	0.4
	1200			29	1007	NNE	11	07	0.9	3	85	22	0.0
	1800			27	1006	NW	09	05	0.8	3	89	24	0.1
11-05-26 (Monday)	0001	30	25	26	1008	SSW	09	05	0.8	3	90	36	0.4
	0600			25	1009	SSE	07	04	0.8	3	92	41	0.4
	1200			29	1007	SSE	14	10	0.8	3	85	22	0.0
	1800			27	1006	SSE	12	08	0.8	3	89	24	0.1
12-05-26 (Tuesday)	0001	30	25	26	1008	SSE	11	07	0.9	3	90	36	0.4
	0600			25	1009	SSW	09	05	0.9	3	92	41	0.4
	1200			29	1007	W	07	04	1.0	3	85	22	0.0
	1800			27	1006	SSE	11	07	1.2	3	89	24	0.1

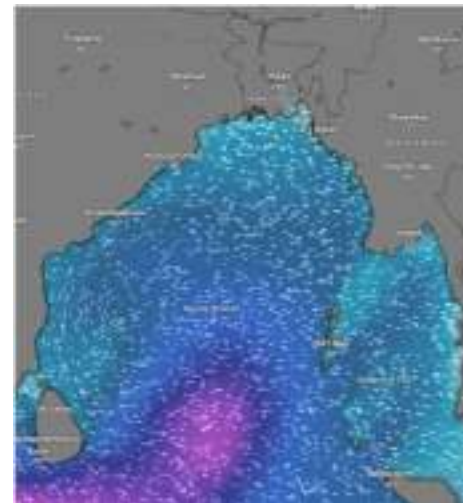
09 May 2026



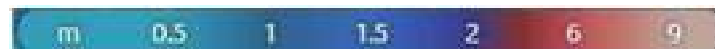
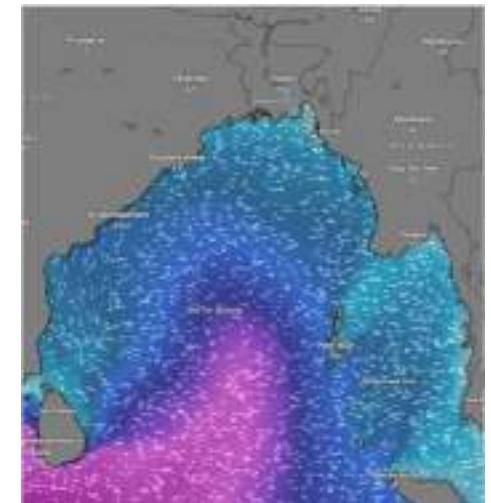
10 May 2026



11 May 2026



12 May 2026



Significant wave height (m)



PREDICTED SURFACE PRESSURE FORECAST (05 to 11 May 2026)



05 May 2026



06 May 2026



07 May 2026



08 May 2026



09 May 2026



10 May 2026



11 May 2026

