



**SUMMARY OF MARINE WEATHER FORECAST**  
**COASTAL AREA OF BANGLADESH**  
**DATE: 04 to 11 Dec 2024**



Fleet forecast	Seasonal low lies over south Bay. extending its trough up to North Bay
Wind direction, speed	North/North-easterly 12 kts, (Temporary gusting up to 23 kts).
Wave height & sea state	Wave height: 0.1 to 1.6 m (Sea state:1 to 4).
Sea surface temperature	18°C - 26°C (May remain nearly unchanged).
Baro pressure	1009-1013 mb
Rainfall	Temporary Partly cloudy sky over Bay of Bengal & adjoining area.
Fog	Light to moderate fog may occur at places over the coastal area during late night till early morning.

**Outlook for 04 to 11 Dec 2024:** Night and day temperature may fall further at the beginning period.



# MARINE WEATHER FORECAST (04 to 11 Dec 2024) NEAR AUTHORITY BUOY (22° 12' N, 091° 38' E)



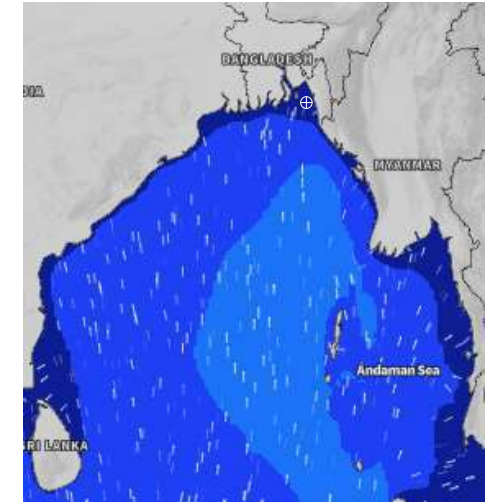
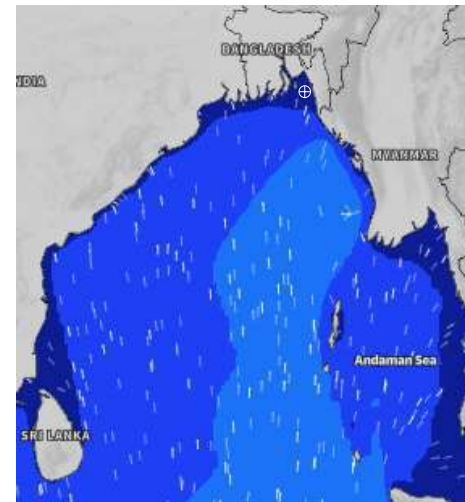
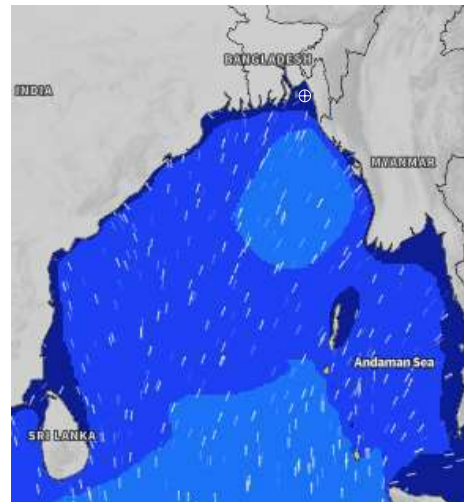
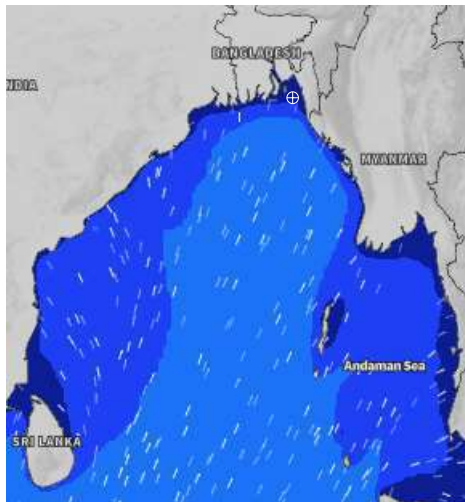
Date	Time	Air Temp (°C)		Sea Surface Temp (°C)	Baro Pressure (mbar)	Wind Direction	Wind Spd (kts)		Wave Ht (m)	Sea State	Humidity (%)	Prob of Rain
		Max	Min				Max	Avg				
04-12-24 (Wednesday)	0001	30	17	23	1012	N	11	10	0.2	2	72	10% (0.0 mm)
	0600			21	1012	NNE	14	13	0.3	2	77	11% (0.0 mm)
	1200			26	1012	NNW	12	11	0.3	2	52	10% (0.0 mm)
	1800			25	1010	NNE	17	16	0.3	2	64	10% (0.0 mm)
05-12-24 (Thursday)	0001	29	17	22	1011	NNE	12	10	0.2	2	79	10% (0.0 mm)
	0600			20	1011	NNE	11	10	0.3	2	85	11% (0.0 mm)
	1200			25	1012	NW	11	10	0.3	2	52	13% (0.0 mm)
	1800			25	1010	NW	14	13	0.2	2	64	11% (0.0 mm)
06-12-24 (Friday)	0001	28	16	21	1011	NNW	10	9	0.3	2	79	10% (0.0 mm)
	0600			19	1012	NNE	8	7	0.2	2	85	11% (0.0 mm)
	1200			21	1012	NE	10	9	0.1	1	52	10% (0.0 mm)
	1800			20	1010	NNE	12	11	0.3	2	64	12% (0.0 mm)
07-12-24 (Saturday)	0001	27	15	20	1011	NNE	10	9	0.2	2	79	10% (0.0 mm)
	0600			18	1011	NE	9	8	0.2	2	85	11% (0.0 mm)
	1200			23	1012	NE	9	8	0.1	1	52	10% (0.0 mm)
	1800			24	1010	NE	13	12	0.1	1	64	12% (0.0 mm)

**04 Dec 2024**

**05 Dec 2024**

**06 Dec 2024**

**07 Dec 2024**



Significant wave height (m)

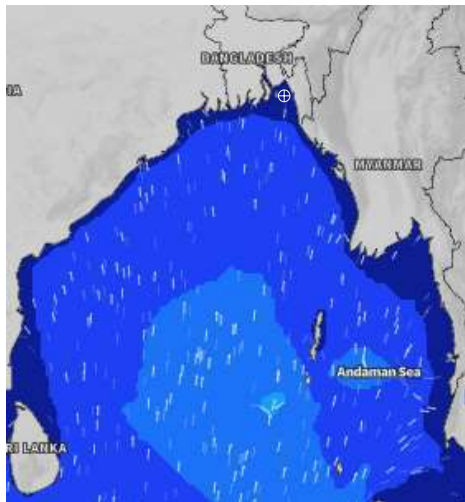


# MARINE WEATHER FORECAST (04 to 11 Dec 2024) NEAR AUTHORITY BUOY (22° 12' N, 091° 38' E)

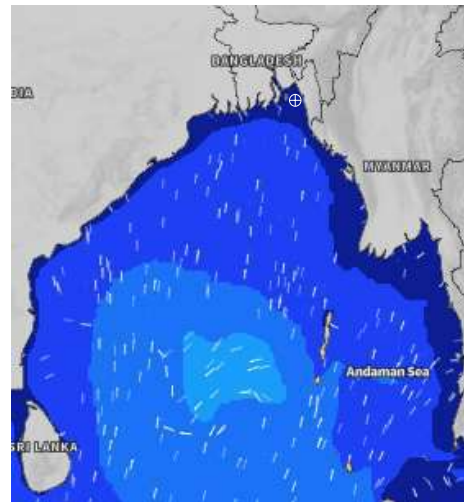


Date	Time	Air Temp (°C)		Sea Surface Temp (°C)	Baro Pressure (mbar)	Wind Direction	Wind Spd (kts)		Wave Ht (m)	Sea State	Humidity (%)	Prob of Rain
		Max	Min				Max	Avg				
08-12-24 (Sunday)	0001	27	16	20	1012	NE	9	8	0.1	1	90	10% (0.0 mm)
	0600			18	1012	NE	9	8	0.1	1	89	12% (0.0 mm)
	1200			23	1012	NE	8	7	0.1	1	72	10% (0.0 mm)
	1800			24	1011	NNW	10	9	0.1	1	80	13% (0.0 mm)
09-12-24 (Monday)	0001	28	18	21	1012	N	8	7	0.1	1	91	10% (0.0 mm)
	0600			19	1012	NW	9	8	0.1	1	91	11% (0.0 mm)
	1200			24	1013	N	8	7	0.1	1	70	10% (0.0 mm)
	1800			24	1012	N	14	13	0.2	2	81	11% (0.0 mm)
10-12-24 (Tuesday)	0001	29	18	21	1013	NE	11	10	0.2	2	91	14% (0.0 mm)
	0600			20	1013	NE	14	13	0.2	2	91	11% (0.0 mm)
	1200			22	1012	NE	13	12	0.2	2	70	10% (0.0 mm)
	1800			20	1011	N	14	13	0.2	2	81	12% (0.0 mm)
11-12-24 (Wednesday)	0001	29	17	21	1013	NE	11	10	0.2	2	91	14% (0.0 mm)
	0600			20	1013	NE	14	13	0.3	2	91	11% (0.0 mm)
	1200			24	1012	NE	13	12	0.2	2	70	10% (0.0 mm)
	1800			25	1012	N	14	13	0.2	2	81	12% (0.0 mm)

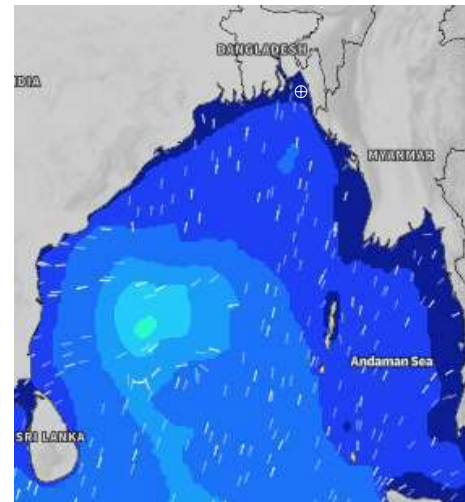
**08 Dec 2024**



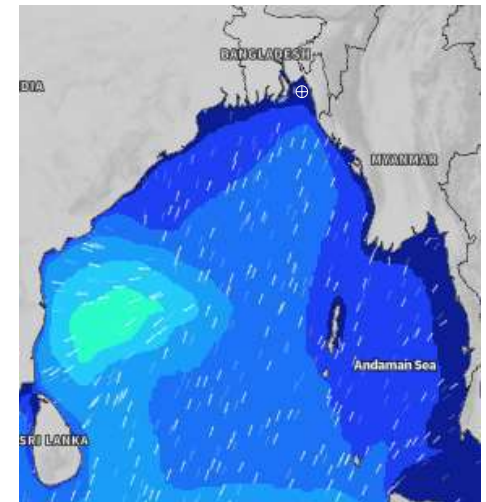
**09 Dec 2024**



**10 Dec 2024**



**11 Dec 2024**



Significant wave height (m)



# MARINE WEATHER FORECAST (04 to 11 Dec 2024)

## 20 NM WEST OF ELEPHANT POINT (21° 10'N, 091° 42'E)



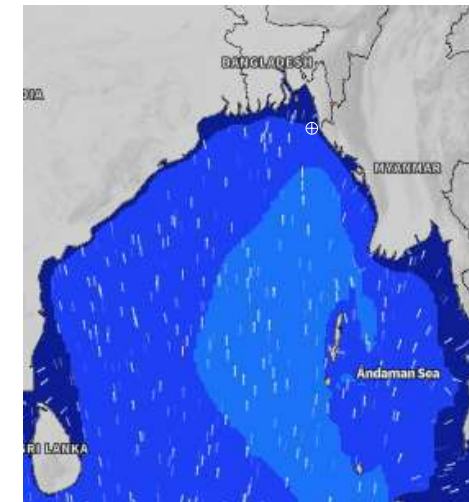
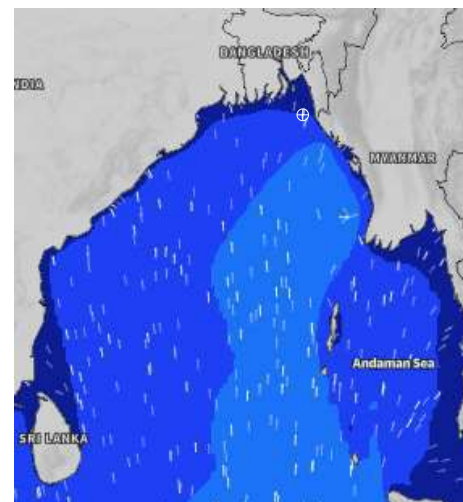
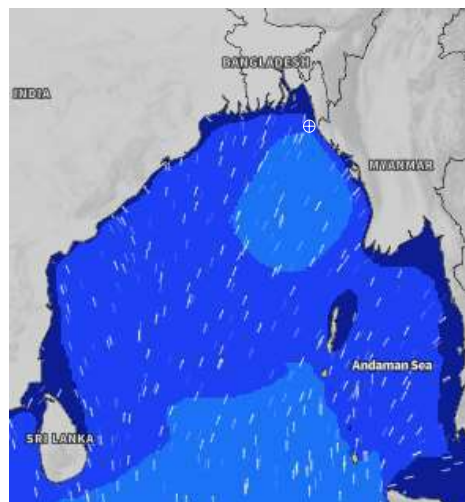
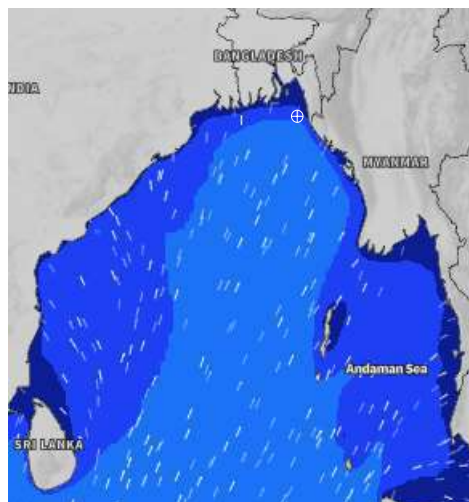
Date	Time	Air Temp (°C)		Sea Surface Temp (°C)	Baro Pressure (mbar)	Wind Direction	Wind Spd (kts)		Wave Ht (m)	Sea State	Humidity (%3)	Prob of Rain
		Max	Min				Max	Avg				
04-12-24 (Wednesday)	0001	30	19	26	1011	N	16	15	1.0	3	76	14% (0.0 mm)
	0600			25	1011	N	18	16	1.1	3	74	10% (0.0 mm)
	1200			25	1011	N	20	19	1.1	3	56	12% (0.0 mm)
	1800			26	1010	NNE	18	17	1.2	3	68	13% (0.0 mm)
05-12-24 (Thursday)	0001	29	18	26	1011	N	19	18	1.1	3	80	12% (0.0 mm)
	0600			24	1011	N	19	18	1.0	3	84	14% (0.0 mm)
	1200			25	1011	N	19	18	1.0	3	52	11% (0.0 mm)
	1800			26	1010	NNW	19	18	1.0	3	71	13% (0.0 mm)
06-12-24 (Friday)	0001	28	17	26	1011	N	16	15	1.0	3	81	12% (0.0 mm)
	0600			23	1011	N	15	14	0.9	3	84	14% (0.0 mm)
	1200			24	1011	N	14	13	0.9	3	56	12% (0.0 mm)
	1800			24	1010	NW	14	13	0.9	3	72	10% (0.0 mm)
07-12-24 (Saturday)	0001	27	16	25	1010	N	14	13	0.8	3	81	12% (0.0 mm)
	0600			23	1011	N	13	12	0.7	3	84	14% (0.0 mm)
	1200			24	1012	NE	13	12	0.8	3	56	12% (0.0 mm)
	1800			26	1011	NNE	15	14	0.8	3	72	10% (0.0 mm)

**04 Dec 2024**

**05 Dec 2024**

**06 Dec 2024**

**07 Dec 2024**



Significant wave height (m)



# MARINE WEATHER FORECAST (04 to 11 Dec 2024)

## 20 NM WEST OF ELEPHANT POINT (21° 10' N, 091° 42' E)



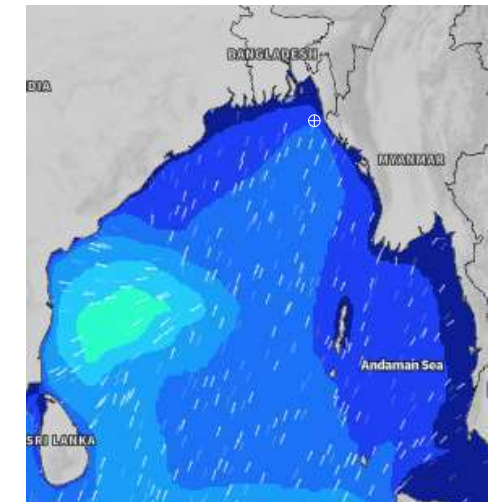
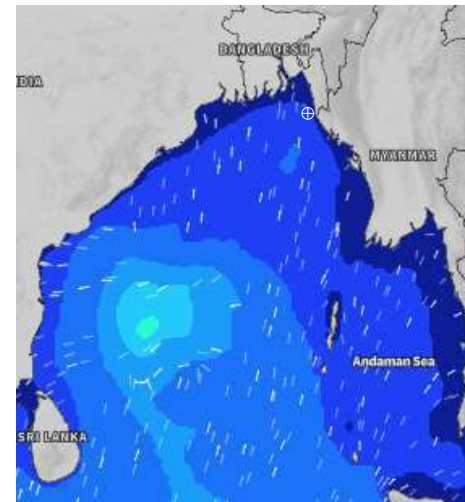
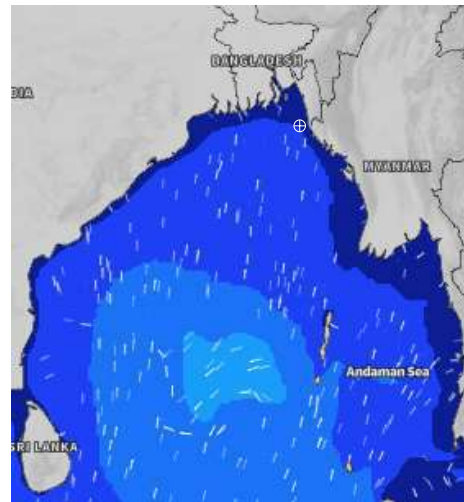
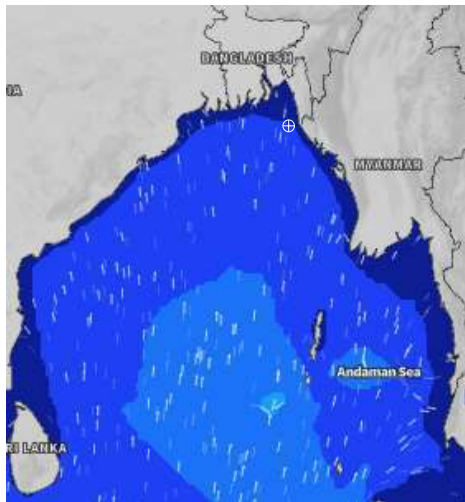
Date	Time	Air Temp (°C)		Sea Surface Temp (°C)	Baro Pressure (mbar)	Wind Direction	Wind Spd (kts)		Wave Ht (m)	Sea State	Humidity (%)	Prob of Rain
		Max	Min				Max	Avg				
08-12-24 (Sunday)	0001	27	17	25	1012	NNE	12	11	0.7	3	89	10% (0.0 mm)
	0600			22	1012	NE	14	13	0.7	3	89	12% (0.0 mm)
	1200			24	1012	NE	11	10	0.6	3	74	10% (0.0 mm)
	1800			25	1011	NNE	13	12	0.7	3	79	10% (0.0 mm)
09-12-24 (Monday)	0001	29	19	24	1012	N	9	8	0.5	3	90	10% (0.0 mm)
	0600			23	1012	NW	13	12	0.6	3	90	11% (0.0 mm)
	1200			24	1012	N	11	10	0.7	3	72	10% (0.0 mm)
	1800			26	1010	N	14	13	0.8	3	82	10% (0.0 mm)
10-12-24 (Tuesday)	0001	30	19	25	1012	NW	18	16	0.8	2	82	13% (0.0 mm)
	0600			24	1012	N	20	16	0.8	3	91	14% (0.0 mm)
	1200			24	1012	NNW	19	18	0.8	3	70	12% (0.0 mm)
	1800			26	1011	N	21	20	0.8	3	84	13% (0.0 mm)
11-12-24 (Wednesday)	0001	29	18	25	1012	NW	13	12	0.6	3	82	13% (0.0 mm)
	0600			24	1012	N	11	10	0.7	3	91	14% (0.0 mm)
	1200			25	1012	NNW	14	13	0.8	3	70	12% (0.0 mm)
	1800			26	1012	N	18	16	0.8	3	84	13% (0.0 mm)

**08 Dec 2024**

**09 Dec 2024**

**10 Dec 2024**

**11 Dec 2024**



Significant wave height (m)



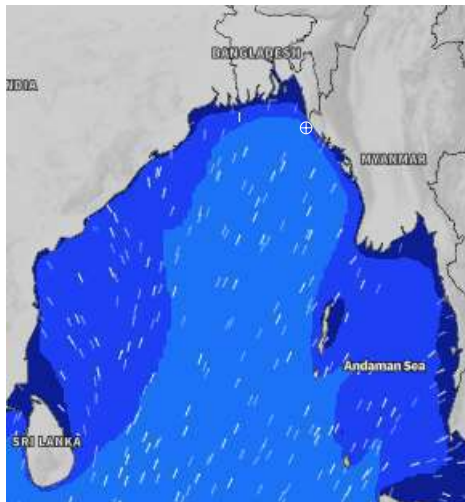
## MARINE WEATHER FORECAST (04 to 11 Dec 2024)

### 15 NM WEST OF ST. MARTIN'S LIGHT HOUSE (20° 37' N, 092° 03' E)

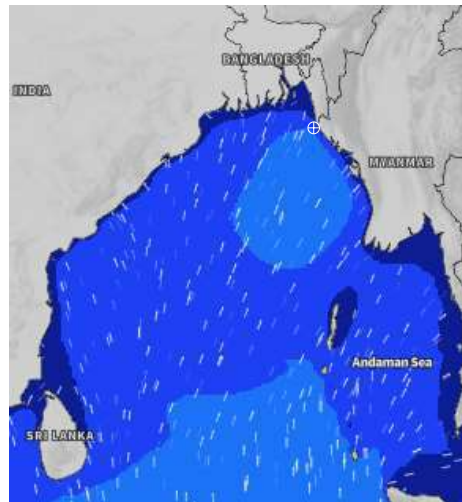


Date	Time	Air Temp (°C)		Sea Surface Temp (°C)	Baro Pressure (mbar)	Wind Direction	Wind Spd (kts)		Wave Ht (m)	Sea State	Humidity (%)	Prob of Rain
		Max	Min				Max	Avg				
04-12-24 (Wednesday)	0001	31	20	27	1011	NNE	18	15	1.3	4	77	11% (0.0 mm)
	0600			26	1010	N	17	16	1.4	4	80	10% (0.0 mm)
	1200			26	1012	N	18	16	1.5	4	54	11% (0.0 mm)
	1800			26	1009	NNW	20	19	1.6	4	67	10% (0.0 mm)
05-12-24 (Thursday)	0001	30	19	26	1010	NNW	20	18	1.5	4	79	11% (0.0 mm)
	0600			25	1010	N	22	19	1.5	4	80	10% (0.0 mm)
	1200			26	1012	N	23	19	1.4	4	54	11% (0.0 mm)
	1800			26	1009	NNW	21	20	1.5	4	68	10% (0.0 mm)
06-12-24 (Friday)	0001	29	19	26	1011	N	18	17	1.3	4	81	13% (0.0 mm)
	0600			25	1010	N	18	17	1.2	3	90	12% (0.0 mm)
	1200			25	1012	NNW	18	16	1.1	3	57	14% (0.0 mm)
	1800			26	1009	NNW	17	20	1.2	3	67	15% (0.0 mm)
07-12-24 (Saturday)	0001	28	18	26	1011	NNW	16	15	1.2	3	81	13% (0.0 mm)
	0600			25	1009	NE	19	18	1.1	3	90	12% (0.0 mm)
	1200			24	1012	NNE	16	15	1.2	3	57	14% (0.0 mm)
	1800			26	1010	NE	19	18	1.2	3	67	15% (0.0 mm)

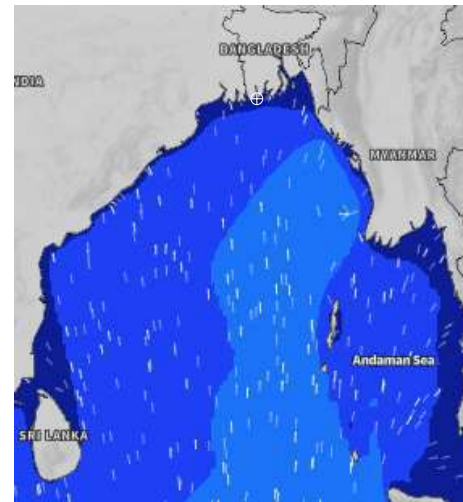
**04 Dec 2024**



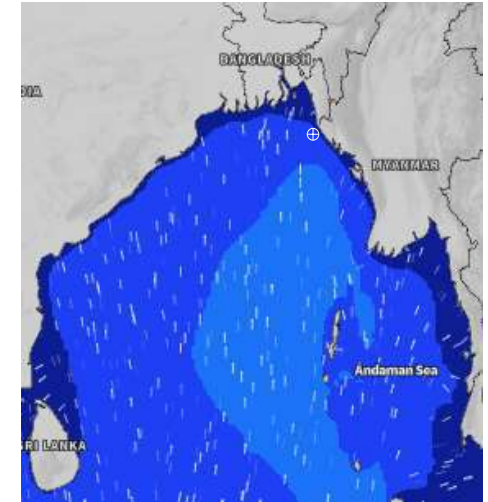
**05 Dec 2024**



**06 Dec 2024**



**07 Dec 2024**



Significant wave height (m)



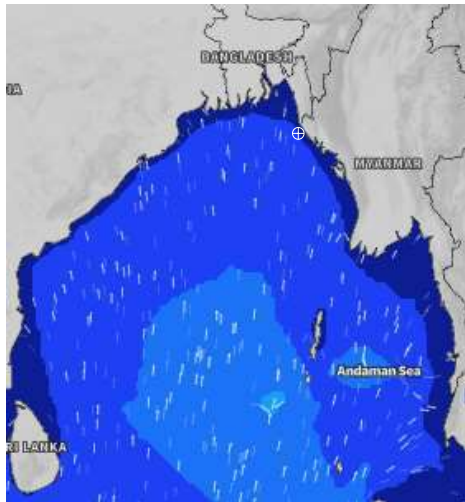
# MARINE WEATHER FORECAST (04 to 11 Dec 2024)

## 15 NM WEST OF ST. MARTIN'S LIGHT HOUSE (20° 37' N, 092° 03' E)

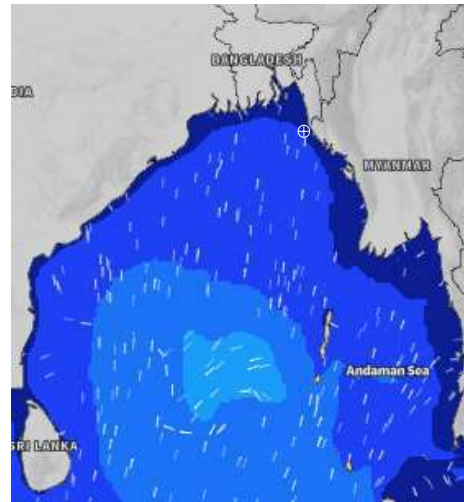


Date	Time	Air Temp (°C)		Sea Surface Temp (°C)	Baro Pressure (mbar)	Wind Direction	Wind Spd (kts)		Wave Ht (m)	Sea State	Humidity (%)	Prob of Rain
		Max	Min				Max	Avg				
08-12-24 (Sunday)	0001	28	18	26	1012	NNE	13	12	1.0	3	86	10% (0.0 mm)
	0600			24	1011	NE	14	13	1.0	3	85	13% (0.0 mm)
	1200			24	1013	NE	12	11	0.8	3	76	12% (0.0 mm)
	1800			25	1010	NNE	10	9	0.8	3	71	15% (0.0 mm)
09-12-24 (Monday)	0001	29	20	25	1012	NE	10	9	0.8	3	86	14% (0.0 mm)
	0600			24	1011	NE	11	10	0.7	3	86	12% (0.0 mm)
	1200			24	1012	NNE	10	9	0.7	3	73	13% (0.0 mm)
	1800			26	1009	NNW	13	12	0.7	3	78	15% (0.0 mm)
10-12-24 (Tuesday)	0001	30	21	26	1012	NNW	14	12	0.9	3	82	12% (0.0 mm)
	0600			25	1010	NW	18	17	1.0	3	86	14% (0.0 mm)
	1200			25	1011	N	20	19	1.2	3	70	13% (0.0 mm)
	1800			25	1009	NNW	20	19	1.3	4	87	14% (0.0 mm)
11-12-24 (Wednesday)	0001	30	20	26	1011	NNW	23	19	1.3	4	82	12% (0.0 mm)
	0600			26	1009	NW	20	21	1.4	4	86	14% (0.0 mm)
	1200			25	1012	N	22	19	1.4	4	70	13% (0.0 mm)
	1800			26	1009	NNW	23	21	1.6	4	87	14% (0.0 mm)

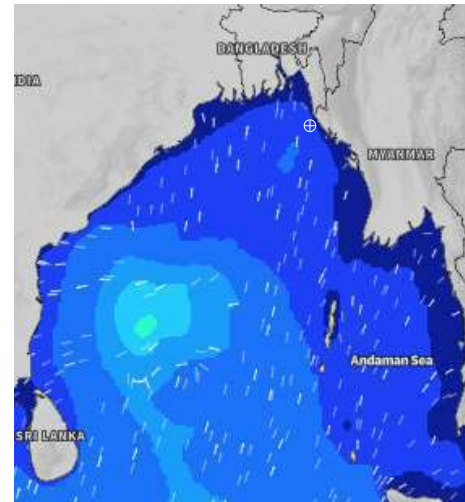
**08 Dec 2024**



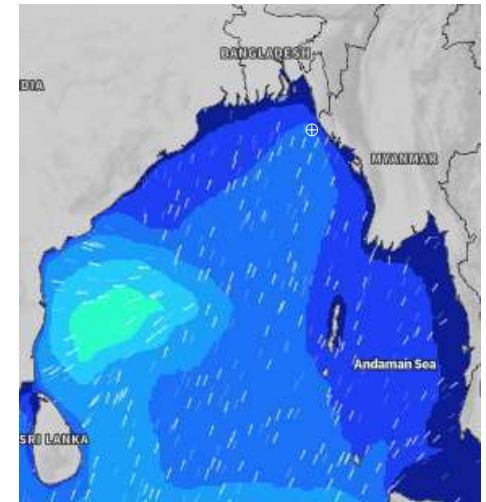
**09 Dec 2024**



**10 Dec 2024**



**11 Dec 2024**



Significant wave height (m)



# MARINE WEATHER FORECAST (04 to 11 Dec 2024)

## 40 NM EAST OF PAYRA FAIRWAY (21° 07' N, 090° 45' E)



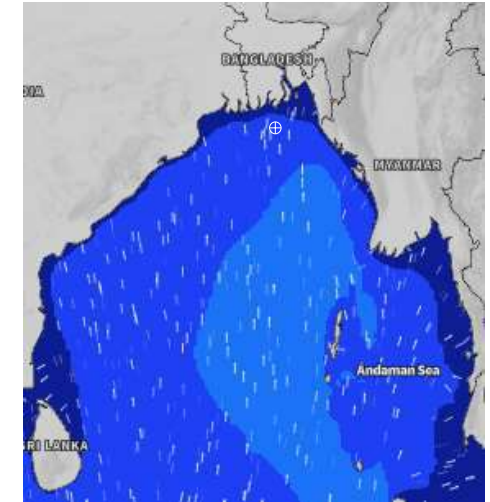
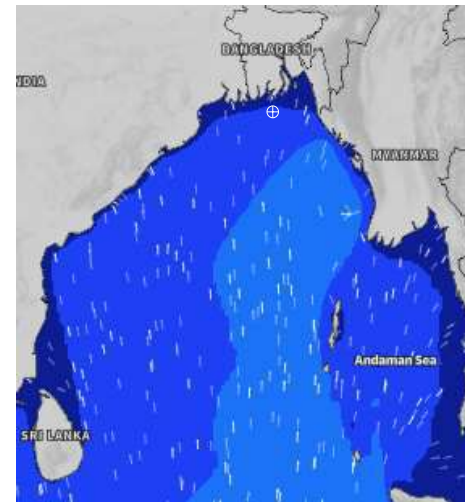
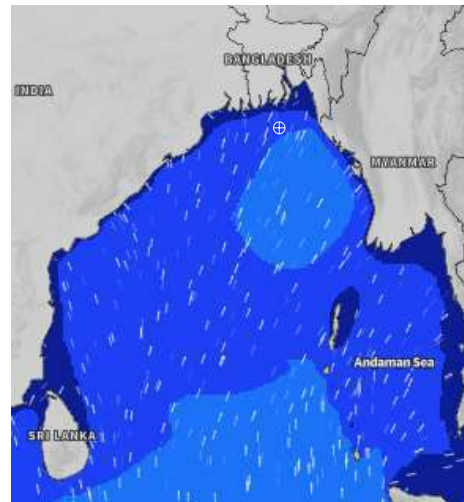
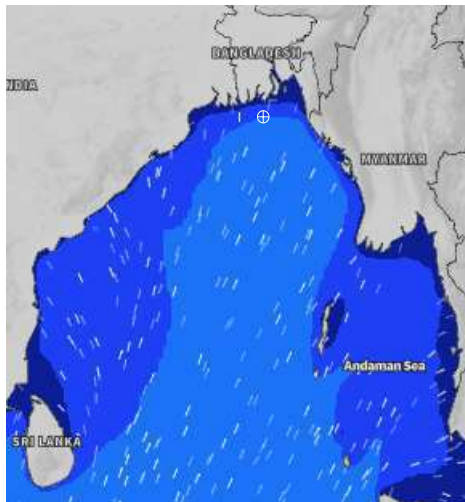
Date	Time	Air Temp (°C)		Sea Surface Temp (°C)	Baro Pressure (mbar)	Wind Direction	Wind Spd (kts)		Wave Ht (m)	Sea State	Humidity (%)	Prob of Rain
		Max	Min				Max	Avg				
04-12-24 (Wednesday)	0001	29	18	26	1012	NNE	13	12	1.2	3	76	11% (0.0 mm)
	0600			25	1012	NNE	16	15	1.4	4	76	15% (0.0 mm)
	1200			25	1012	N	18	16	1.4	4	55	12% (0.0 mm)
	1800			26	1011	NNE	16	15	1.3	4	68	10% (0.0 mm)
05-12-24 (Thursday)	0001	28	18	26	1011	N	16	15	1.2	3	81	11% (0.0 mm)
	0600			25	1011	N	16	15	1.2	3	84	12% (0.0 mm)
	1200			25	1012	N	16	14	1.2	3	54	12% (0.0 mm)
	1800			26	1010	NNE	13	12	1.0	3	65	10% (0.0 mm)
06-12-24 (Friday)	0001	28	17	26	1011	NNW	11	10	0.9	3	81	16% (0.0 mm)
	0600			25	1011	N	10	9	0.8	3	86	13% (0.0 mm)
	1200			25	1012	N	11	10	0.9	3	55	15% (0.0 mm)
	1800			25	1010	NW	10	9	0.8	3	65	12% (0.0 mm)
07-12-24 (Saturday)	0001	26	16	25	1011	NE	8	7	0.9	3	81	16% (0.0 mm)
	0600			25	1011	N	9	8	0.9	3	86	13% (0.0 mm)
	1200			24	1012	N	9	8	0.9	3	55	15% (0.0 mm)
	1800			24	1011	NE	10	9	0.9	3	65	12% (0.0 mm)

**04 Dec 2024**

**05 Dec 2024**

**06 Dec 2024**

**07 Dec 2024**



Significant wave height (m)





# MARINE WEATHER FORECAST (04 to 11 Dec 2024)

## 40 NM EAST OF PAYRA FAIRWAY (21° 07' N, 090° 45' E)



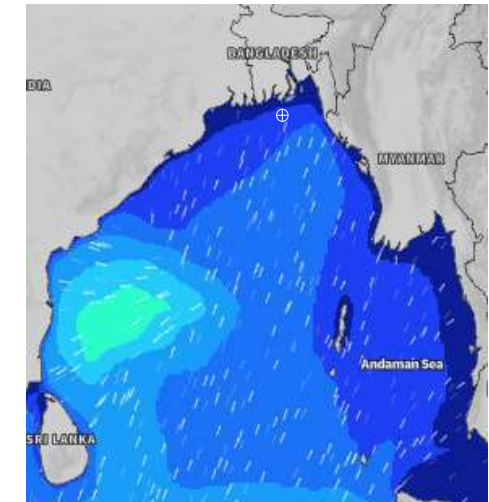
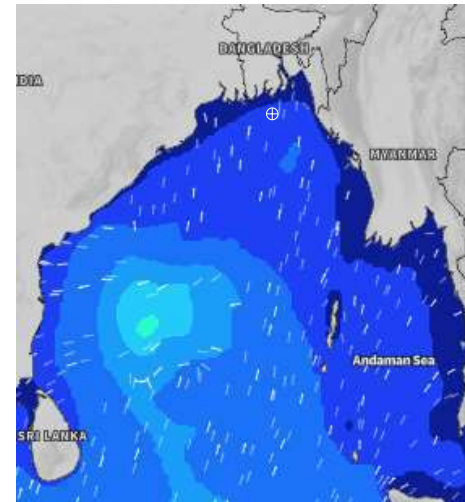
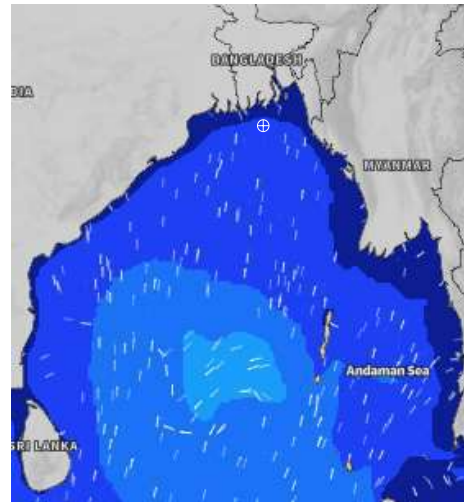
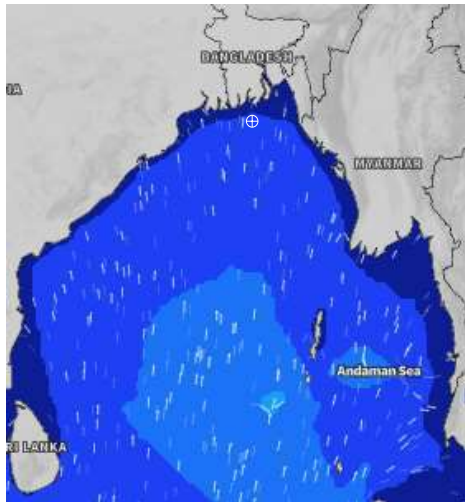
Date	Time	Air Temp (°C)		Sea Surface Temp (°C)	Baro Pressure (mbar)	Wind Direction	Wind Spd (kts)		Wave Ht (m)	Sea State	Humidity (%)	Prob of Rain
		Max	Min				Max	Avg				
08-12-24 (Sunday)	0001	26	17	25	1012	NNE	10	9	0.9	3	88	10% (0.0 mm)
	0600			24	1012	NE	13	12	0.9	3	89	12% (0.0 mm)
	1200			24	1012	NE	11	10	0.9	3	70	10% (0.0 mm)
	1800			24	1011	NNE	12	11	0.8	3	81	10% (0.0 mm)
09-12-24 (Monday)	0001	27	19	25	1012	NNE	8	7	0.7	3	90	10% (0.0 mm)
	0600			25	1012	NE	13	12	0.7	3	90	11% (0.0 mm)
	1200			24	1013	NNE	12	11	0.8	3	70	15% (0.0 mm)
	1800			25	1011	N	16	15	0.8	3	79	14% (0.0 mm)
10-12-24 (Tuesday)	0001	28	19	26	1012	NNW	17	16	0.8	3	88	13% (0.0 mm)
	0600			25	1012	NE	20	18	0.9	3	91	15% (0.0 mm)
	1200			25	1013	NNE	14	13	1.0	3	72	12% (0.0 mm)
	1800			26	1011	NE	12	12	1.0	3	77	14% (0.0 mm)
11-12-24 (Wednesday)	0001	27	17	26	1011	NNW	18	13	0.9	3	88	13% (0.0 mm)
	0600			25	1010	NE	19	16	1.1	3	91	15% (0.0 mm)
	1200			25	1012	NNE	19	16	1.1	3	72	12% (0.0 mm)
	1800			26	1010	NE	20	13	1.1	3	77	14% (0.0 mm)

**08 Dec 2024**

**09 Dec 2024**

**10 Dec 2024**

**11 Dec 2024**



Significant wave height (m)



# MARINE WEATHER FORECAST (04 to 11 Dec 2024)

## 10 NM SOUTH OF MONGLA FAIRWAY (21° 16' N, 089° 34' E)



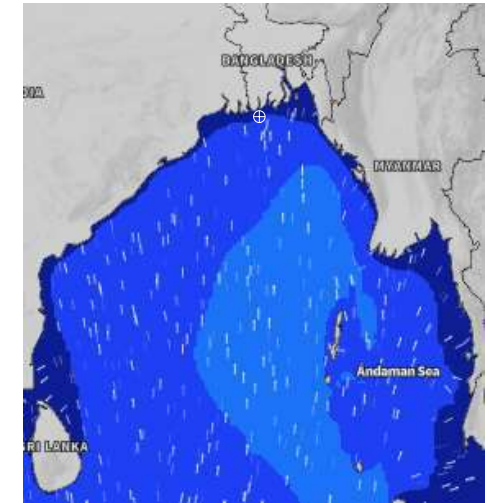
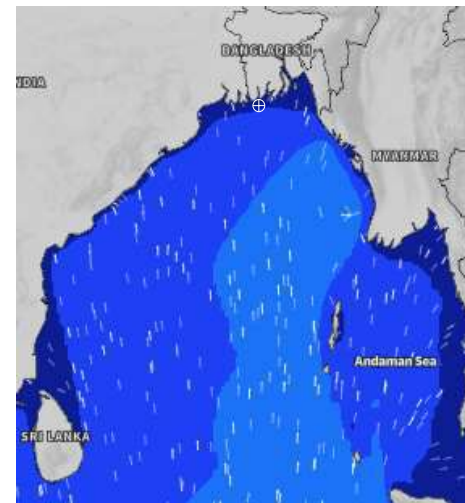
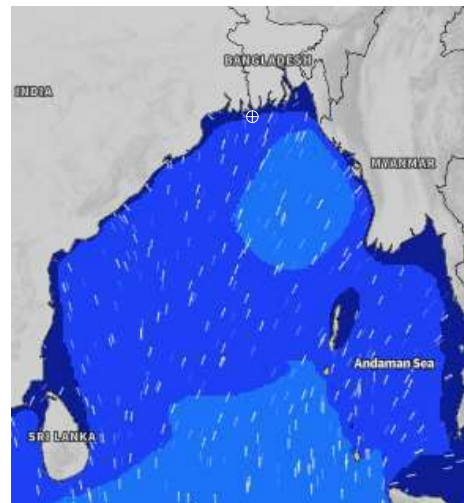
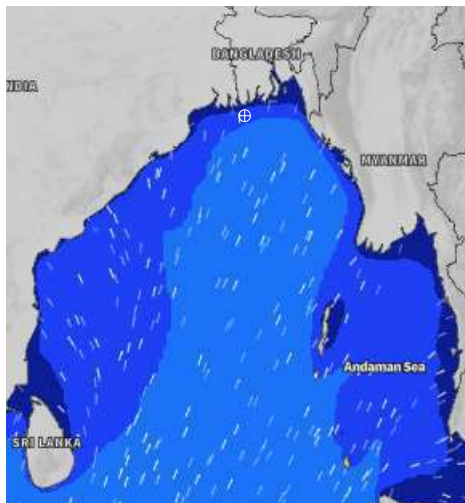
Date	Time	Air Temp (°C)		Sea Surface Temp (°C)	Baro Pressure (mbar)	Wind Direction	Wind Spd (kts)		Wave Ht (m)	Sea State	Humidity (%)	Prob of Rain
		Max	Min				Max	Avg				
04-12-24 (Wednesday)	0001	29	17	26	1012	NNE	11	10	1.1	3	77	11% (0.0 mm)
	0600			25	1012	NNE	15	14	1.1	3	79	12% (0.0 mm)
	1200			24	1013	NNE	11	10	1.1	3	50	10% (0.0 mm)
	1800			26	1011	NE	6	5	1.1	3	64	12% (0.0 mm)
05-12-24 (Thursday)	0001	29	16	25	1011	NNE	8	7	0.9	3	80	11% (0.0 mm)
	0600			24	1013	N	12	10	0.9	3	80	12% (0.0 mm)
	1200			24	1012	N	13	12	0.9	3	48	11% (0.0 mm)
	1800			25	1010	WSW	5	4	0.8	3	63	12% (0.0 mm)
06-12-24 (Friday)	0001	28	15	25	1011	WNW	5	4	0.8	3	86	15% (0.0 mm)
	0600			24	1012	NNW	10	9	0.7	3	89	13% (0.0 mm)
	1200			24	1012	N	8	7	0.7	3	53	10% (0.0 mm)
	1800			25	1010	NW	6	7	0.8	3	66	13% (0.0 mm)
07-12-24 (Saturday)	0001	27	14	25	1011	NW	6	5	0.7	3	86	15% (0.0 mm)
	0600			24	1012	NE	8	7	0.8	3	89	13% (0.0 mm)
	1200			23	1012	NNW	8	7	0.7	3	53	10% (0.0 mm)
	1800			24	1010	NE	5	4	0.8	3	66	13% (0.0 mm)

**04 Dec 2024**

**05 Dec 2024**

**06 Dec 2024**

**07 Dec 2024**



Significant wave height (m)



# MARINE WEATHER FORECAST (04 to 11 Dec 2024)

## 10 NM SOUTH OF MONGLA FAIRWAY (21° 16' N, 089° 34' E)



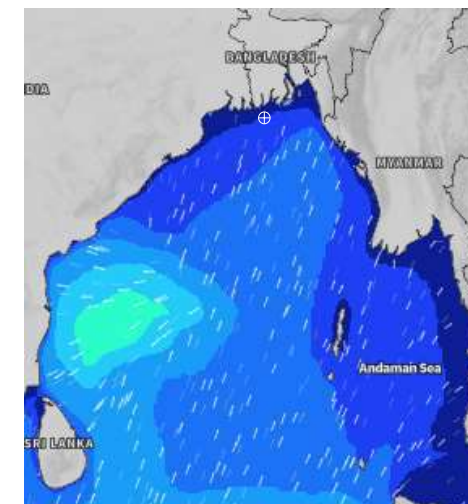
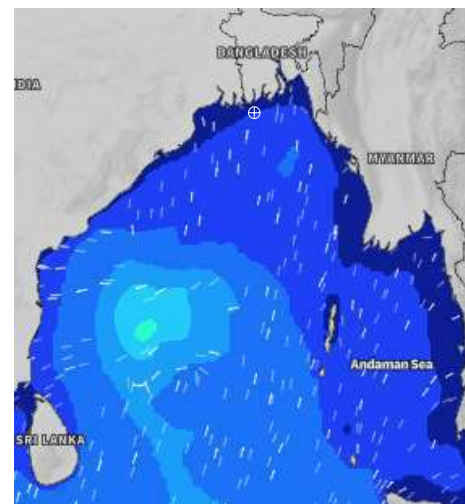
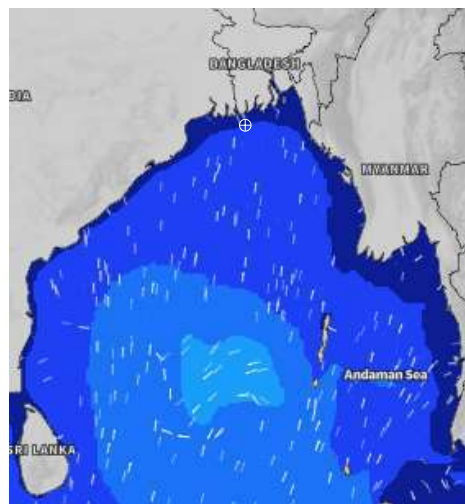
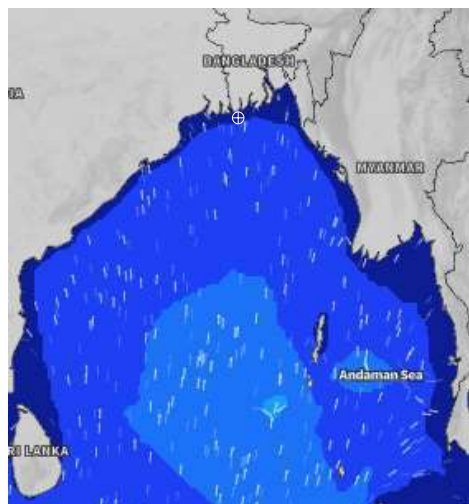
Date	Time	Air Temp (°C)		Sea Surface Temp (°C)	Baro Pressure (mbar)	Wind Direction	Wind Spd (kts)		Wave Ht (m)	Sea State	Humidity (%)	Prob of Rain
		Max	Min				Max	Avg				
08-12-24 (Sunday)	0001	27	15	25	1012	NNE	5	4	0.8	3	89	10% (0.0 mm)
	0600			24	1012	NE	9	8	0.7	3	92	10% (0.0 mm)
	1200			23	1013	NE	8	7	0.7	3	65	12% (0.0 mm)
	1800			24	1012	NNE	6	5	0.7	3	67	10% (0.0 mm)
09-12-24 (Monday)	0001	27	17	25	1012	NNE	6	5	0.7	3	91	10% (0.0 mm)
	0600			24	1012	NNE	12	11	0.6	3	92	10% (0.0 mm)
	1200			24	1013	NW	8	7	0.7	3	67	11% (0.0 mm)
	1800			24	1011	NNW	6	5	0.6	3	76	13% (0.0 mm)
10-12-24 (Tuesday)	0001	28	17	25	1013	NW	8	7	0.6	3	86	15% (0.0 mm)
	0600			24	1012	NNE	13	12	0.7	3	89	14% (0.0 mm)
	1200			24	1013	NE	11	10	0.7	3	61	16% (0.0 mm)
	1800			25	1012	NNW	8	7	0.7	3	77	12% (0.0 mm)
11-12-24 (Wednesday)	0001	27	16	25	1012	NW	7	8	0.6	3	86	15% (0.0 mm)
	0600			24	1011	NNE	12	11	0.6	3	89	14% (0.0 mm)
	1200			24	1012	NE	10	9	0.7	3	61	16% (0.0 mm)
	1800			25	1011	NNW	6	5	0.7	3	77	12% (0.0 mm)

**08 Dec 2024**

**09 Dec 2024**

**10 Dec 2024**

**11 Dec 2024**



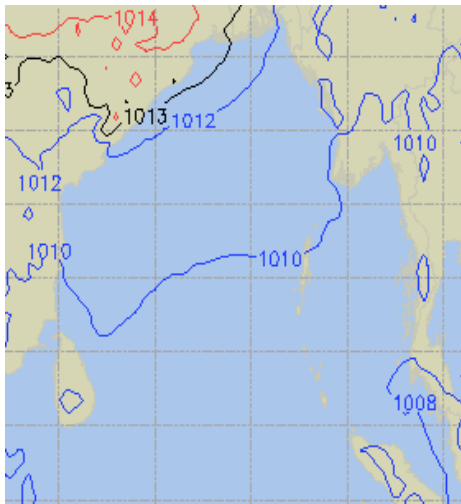
Significant wave height (m)



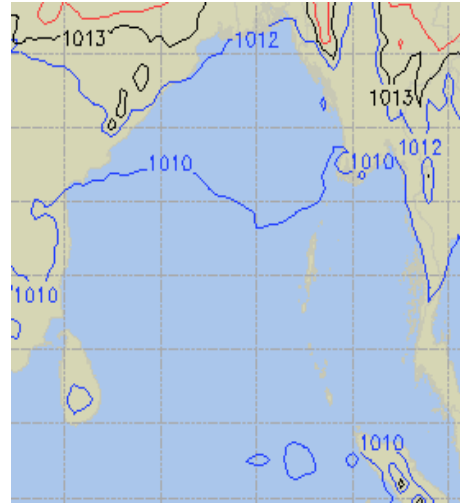
# PREDICTED SURFACE PRESSURE FORECAST (04 to 10 Dec 2024)



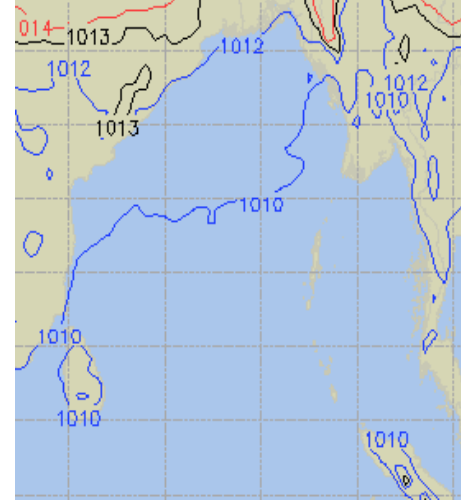
**04 Dec 2024**



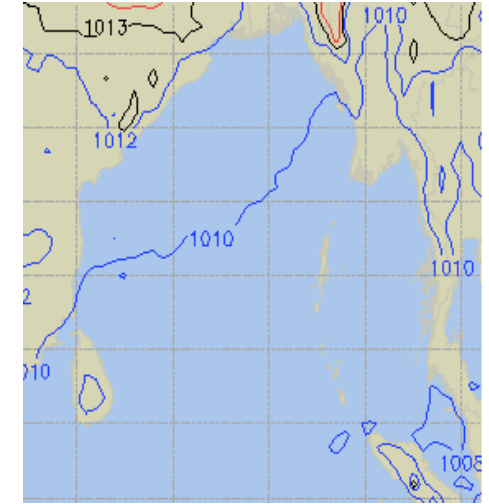
**05 Dec 2024**



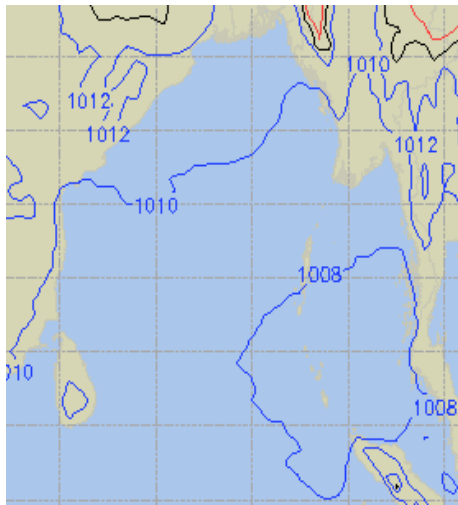
**06 Dec 2024**



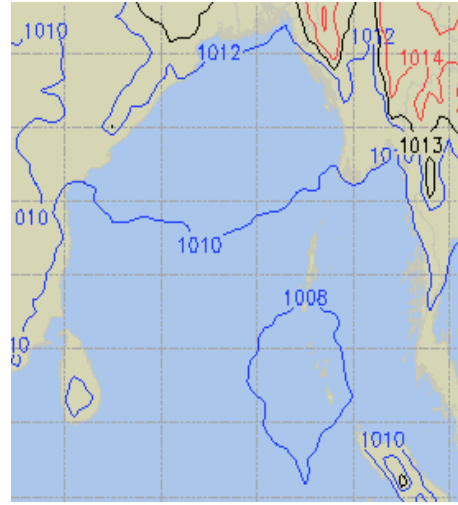
**07 Dec 2024**



**08 Dec 2024**



**09 Dec 2024**



**10 Dec 2024**

