



**SUMMARY OF MARINE WEATHER FORECAST**  
**COASTAL AREA OF BANGLADESH**  
**DATE: 04 to 11 Oct 2024**



Fleet forecast	Monsoon is active over Bangladesh and strong over North Bay.
Wind direction, speed	South/south-easterly 8 kts, (Temporary gusting up to 24 kts).
Wave height & sea state	Wave height: 0.1 to 1.4 m (Sea state:1 to 4).
Sea surface temperature	26°C - 29°C (May remain nearly unchanged).
Baro pressure	1004- 1013 mb
Rainfall	Light to moderate rain/thunder showers over Bay of Bengal & adjoining area with moderately heavy to very heavy falls at places over Rajshahi, Dhaka, Khulna, Barishal & Chattogram division
<b>Outlook for 04 to 11 Oct 2024: Rainfall activity is likely to decrease at the end of said period.</b>	

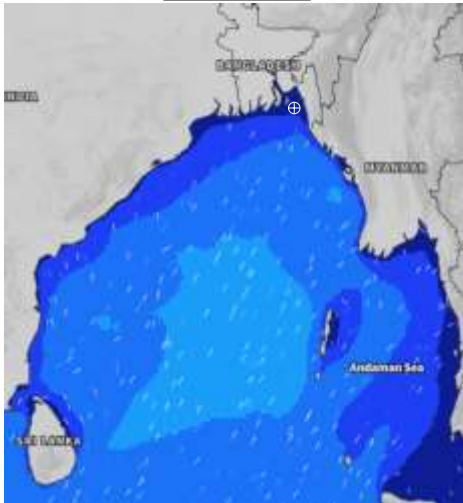


# MARINE WEATHER FORECAST (04 to 11 Oct 2024) NEAR AUTHORITY BUOY (22° 12' N, 091° 38' E)

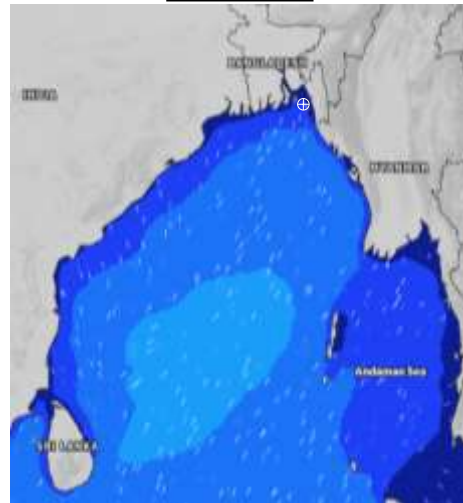


Date	Time	Air Temp (°C)		Sea Surface Temp (°C)	Baro Pressure (mbar)	Wind Direction	Wind Spd (kts)		Wave Ht (m)	Sea State	Humidity (%)	Prob of Rain
		Max	Min				Max	Avg				
04-10-24 (Friday)	0001	29	26	27	1006	SSE	15	12	0.3	2	93	32% (0.2 mm)
	0600			27	1005	SSE	20	15	0.3	2	90	14% (0.0 mm)
	1200			29	1007	S	20	17	0.4	2	84	21% (0.0 mm)
	1800			28	1009	SSE	20	17	0.4	2	90	63% (0.6 mm)
05-10-24 (Saturday)	0001	30	26	27	1008	SSE	24	22	0.5	2	91	20% (0.0 mm)
	0600			27	1008	SSE	19	15	0.4	2	91	40% (0.3 mm)
	1200			29	1009	S	13	11	0.3	2	78	24% (0.0 mm)
	1800			29	1008	SW	10	9	0.2	2	86	52% (0.5 mm)
06-10-24 (Sunday)	0001	31	26	27	1009	SE	11	9	0.2	2	90	24% (0.0 mm)
	0600			26	1010	ESE	7	6	0.2	2	91	38% (0.2 mm)
	1200			27	1011	SSW	7	5	0.2	2	76	75% (0.7 mm)
	1800			28	1010	S	5	4	0.1	1	86	20% (0.0 mm)
07-10-24 (Monday)	0001	31	26	27	1011	ESE	6	5	0.1	1	91	24% (0.0 mm)
	0600			26	1012	ESE	7	6	0.1	1	94	35% (0.2 mm)
	1200			28	1012	SW	6	5	0.1	1	74	24% (0.0 mm)
	1800			29	1012	W	5	4	0.1	1	83	10% (0.0 mm)

**04 Oct 2024**



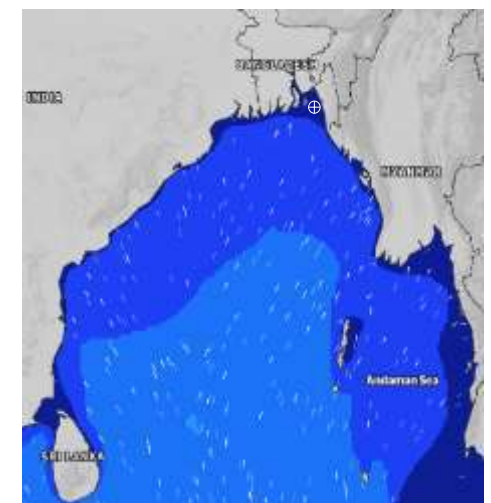
**05 Oct 2024**



**06 Oct 2024**



**07 Oct 2024**



Significant wave height (m)

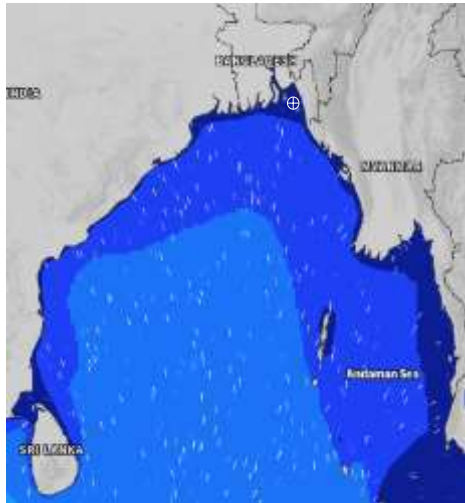


# MARINE WEATHER FORECAST (04 to 11 Oct 2024) NEAR AUTHORITY BUOY (22° 12' N, 091° 38' E)

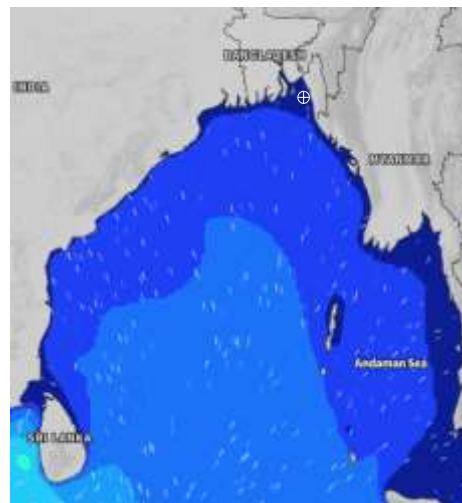


Date	Time	Air Temp (°C)		Sea Surface Temp (°C)	Baro Pressure (mbar)	Wind Direction	Wind Spd (kts)		Wave Ht (m)	Sea State	Humidity (%)	Prob of Rain
		Max	Min				Max	Avg				
08-10-24 (Tuesday)	0001	32	26	27	1011	SE	7	6	0.1	1	90	24% (0.0 mm)
	0600			26	1012	SE	6	5	0.1	1	94	45% (0.3 mm)
	1200			28	1012	S	5	4	0.1	1	73	35% (0.2 mm)
	1800			29	1011	SSE	6	5	0.1	1	82	10% (0.0 mm)
09-10-24 (Wednesday)	0001	31	26	28	1012	SE	5	4	0.1	1	91	38% (0.3 mm)
	0600			26	1012	SE	7	6	0.1	1	92	37% (0.3 mm)
	1200			28	1011	SSW	6	5	0.1	1	78	42% (0.4 mm)
	1800			29	1009	S	6	5	0.1	1	83	15% (0.0 mm)
10-10-24 (Thursday)	0001	32	26	28	1010	SE	6	5	0.1	1	92	40% (0.4 mm)
	0600			27	1010	SE	7	6	0.1	1	92	44% (0.4 mm)
	1200			29	1010	SSW	6	5	0.1	1	78	43% (0.4 mm)
	1800			29	1008	SSE	5	4	0.1	1	85	24% (0.1 mm)
11-10-24 (Friday)	0001	32	26	28	1009	SE	6	5	0.1	1	92	50% (0.5 mm)
	0600			26	1009	SE	6	5	0.1	1	92	57% (0.5 mm)
	1200			28	1009	SSW	6	5	0.1	1	80	39% (0.3 mm)
	1800			29	1007	SE	7	6	0.1	1	85	24% (0.0 mm)

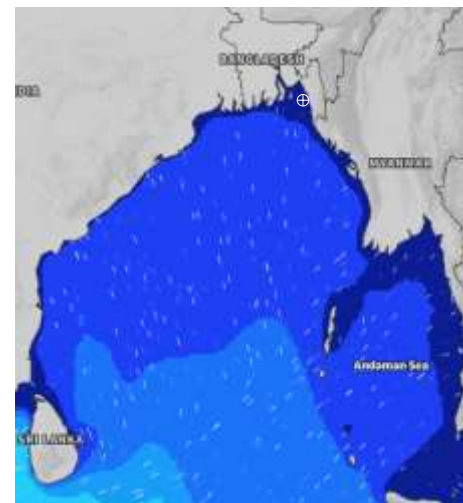
**08 Oct 2024**



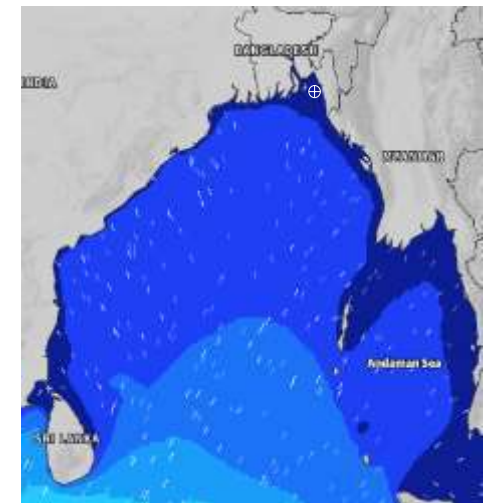
**09 Oct 2024**



**10 Oct 2024**



**11 Oct 2024**



Significant wave height (m)



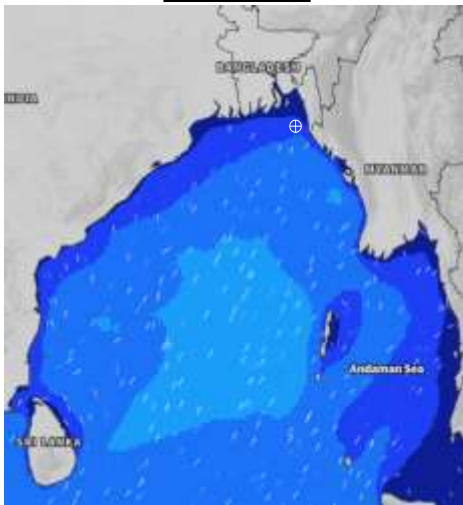
# MARINE WEATHER FORECAST (04 to 11 Oct 2024)

## 20 NM WEST OF ELEPHANT POINT (21° 10' N, 091° 42' E)

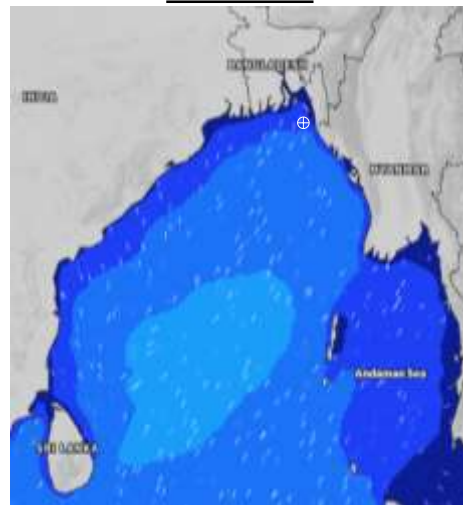


Date	Time	Air Temp (°C)		Sea Surface Temp (°C)	Baro Pressure (mbar)	Wind Direction	Wind Spd (kts)		Wave Ht (m)	Sea State	Humidity (%)	Prob of Rain
		Max	Min				Max	Avg				
04-10-24 (Friday)	0001	28	26	29	1006	SSE	14	13	1.0	3	92	24% (0.0 mm)
	0600			28	1006	SE	18	17	1.1	3	92	19% (0.0 mm)
	1200			29	1007	SSE	21	19	1.4	4	87	98% (2.5 mm)
	1800			28	1006	S	10	9	1.1	3	90	24% (0.0 mm)
05-10-24 (Saturday)	0001	30	26	28	1008	SSE	17	14	1.2	3	92	24% (0.0 mm)
	0600			28	1008	SSE	17	14	1.2	3	92	11% (0.0 mm)
	1200			28	1009	SSE	15	13	1.2	3	82	52% (0.4 mm)
	1800			29	1008	S	12	9	1.1	3	88	24% (0.0 mm)
06-10-24 (Sunday)	0001	30	26	28	1009	SSE	10	9	0.9	3	91	24% (0.0 mm)
	0600			28	1010	SSE	13	12	0.9	3	93	24% (0.0 mm)
	1200			28	1010	SSE	13	11	0.9	3	80	71% (0.7 mm)
	1800			29	1010	SSW	6	5	0.7	3	88	21% (0.0 mm)
07-10-24 (Monday)	0001	31	26	29	1011	S	7	6	0.7	3	92	34% (0.2 mm)
	0600			29	1012	SSE	6	5	0.7	3	93	24% (0.0 mm)
	1200			29	1012	SSW	6	5	0.7	3	74	51% (0.4 mm)
	1800			29	1011	W	7	6	0.7	3	85	10% (0.0 mm)

**04 Oct 2024**



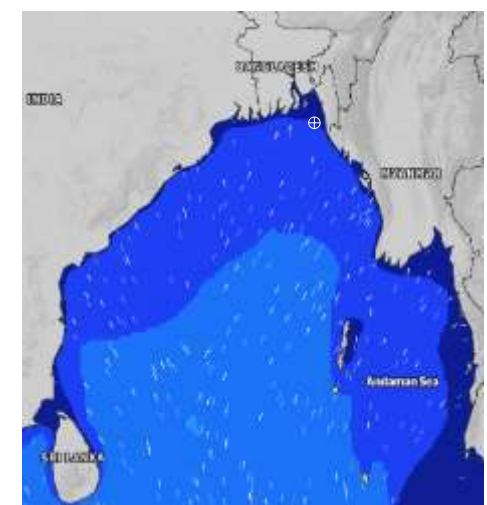
**05 Oct 2024**



**06 Oct 2024**



**07 Oct 2024**



Significant wave height (m)

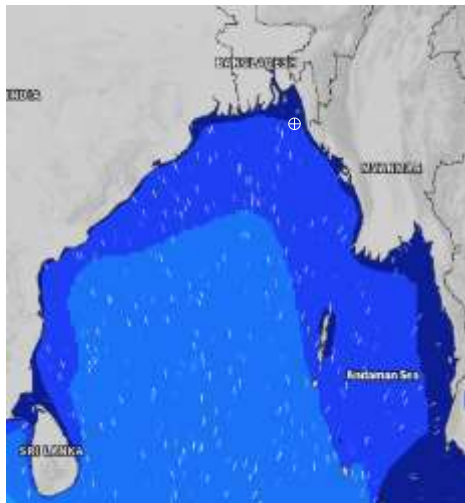


## MARINE WEATHER FORECAST (04 to 11 Oct 2024) 20 NM WEST OF ELEPHANT POINT (21° 10'N, 091° 42'E)

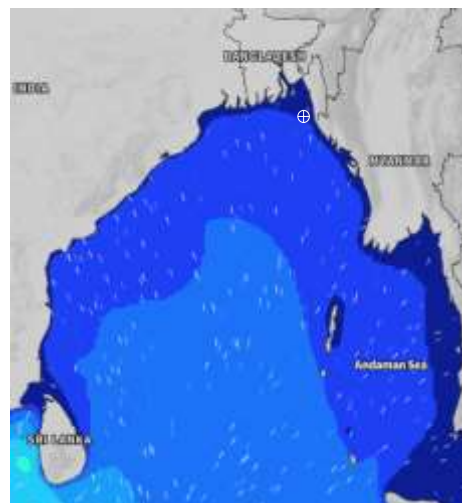


Date	Time	Air Temp (°C)		Sea Surface Temp (°C)	Baro Pressure (mbar)	Wind Direction	Wind Spd (kts)		Wave Ht (m)	Sea State	Humidity (%)	Prob of Rain
		Max	Min				Max	Avg				
08-10-24 (Tuesday)	0001	31	26	29	1011	SSE	4	3	0.7	3	91	32% (0.2 mm)
	0600			28	1012	E	4	3	0.7	3	93	15% (0.0 mm)
	1200			28	1012	SE	4	3	0.7	3	74	38% (0.3 mm)
	1800			29	1010	SSE	6	5	0.7	3	84	37% (0.3 mm)
09-10-24 (Wednesday)	0001	31	25	29	1010	SSE	4	3	0.6	3	91	42% (0.4 mm)
	0600			28	1010	SE	5	4	0.6	3	94	15% (0.0 mm)
	1200			28	1010	SSE	7	6	0.6	3	74	40% (0.4 mm)
	1800			29	1008	S	7	6	0.7	3	83	44% (0.4 mm)
10-10-24 (Thursday)	0001	31	25	29	1009	SSE	5	4	0.5	2	91	43% (0.4 mm)
	0600			28	1009	SE	4	3	0.5	2	94	34% (0.2 mm)
	1200			29	1009	SSE	6	5	0.5	2	78	43% (0.4 mm)
	1800			29	1008	SSE	8	7	0.5	2	85	24% (0.0 mm)
11-10-24 (Friday)	0001	32	26	29	1009	SE	5	4	0.5	2	91	64% (0.6 mm)
	0600			28	1011	SE	5	4	0.5	2	94	51% (0.5 mm)
	1200			29	1010	SSW	5	4	0.5	2	81	43% (0.4 mm)
	1800			29	1008	SE	4	3	0.6	3	84	28% (0.1 mm)

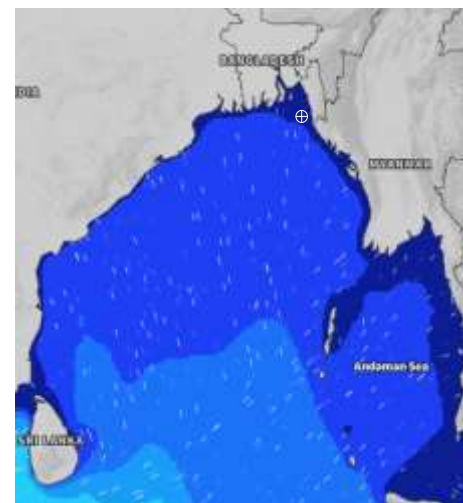
**08 Oct 2024**



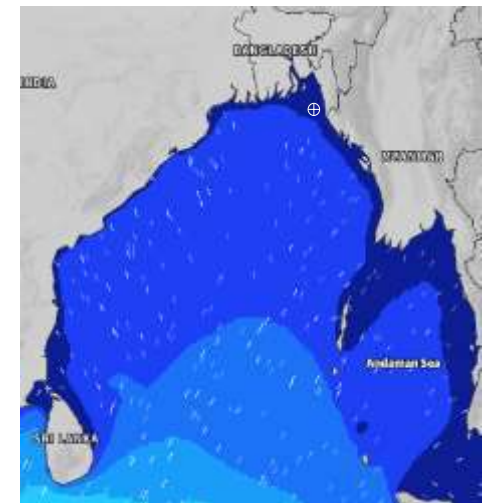
**09 Oct 2024**



**10 Oct 2024**



**11 Oct 2024**



Significant wave height (m)



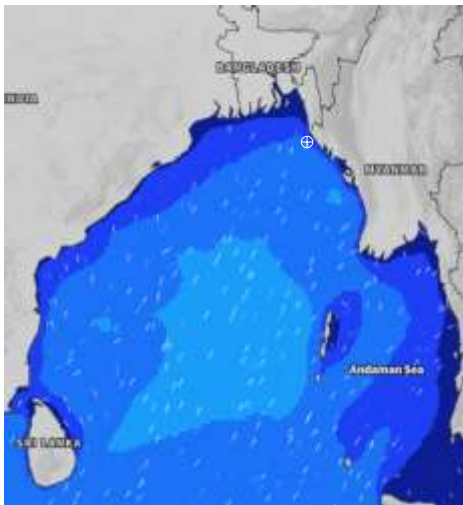
# MARINE WEATHER FORECAST (04 to 11 Oct 2024)

## 15 NM WEST OF ST. MARTIN'S LIGHT HOUSE (20° 37'N, 092° 03'E)

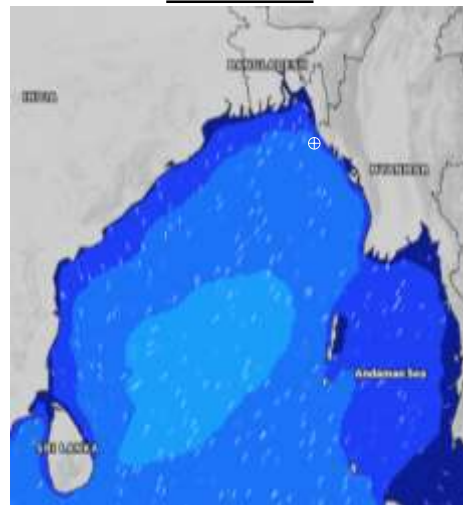


Date	Time	Air Temp (°C)		Sea Surface Temp (°C)	Baro Pressure (mbar)	Wind Direction	Wind Spd (kts)		Wave Ht (m)	Sea State	Humidity (%)	Prob of Rain
		Max	Min				Max	Avg				
04-10-24 (Friday)	0001	28	26	29	1006	S	10	9	1.2	3	92	49% (0.4 mm)
	0600			28	1005	SSE	13	12	1.2	3	92	54% (0.4 mm)
	1200			29	1008	SSE	16	14	1.4	4	90	96% (1.1 mm)
	1800			29	1006	SSW	8	7	1.3	4	91	39% (0.2 mm)
05-10-24 (Saturday)	0001	29	26	29	1009	S	14	12	1.4	4	93	46% (0.4 mm)
	0600			29	1008	SSE	14	13	1.4	4	93	15% (0.0 mm)
	1200			28	1010	SE	13	12	1.3	4	87	62% (0.6 mm)
	1800			29	1007	SSE	10	9	1.2	3	88	24% (0.0 mm)
06-10-24 (Sunday)	0001	30	26	29	1009	SSE	10	9	1.1	3	91	24% (0.0 mm)
	0600			29	1009	SSE	12	11	1.1	3	92	24% (0.0 mm)
	1200			29	1011	SSE	11	10	1.0	3	82	64% (0.6 mm)
	1800			29	1009	S	8	7	0.9	3	88	22% (0.0 mm)
07-10-24 (Monday)	0001	31	26	29	1012	SSW	7	6	0.8	3	91	14% (0.0 mm)
	0600			29	1011	S	5	4	0.8	3	90	22% (0.0 mm)
	1200			29	1013	ESE	4	3	0.8	3	83	35% (0.2 mm)
	1800			29	1010	W	7	6	0.8	3	88	16% (0.0 mm)

**04 Oct 2024**



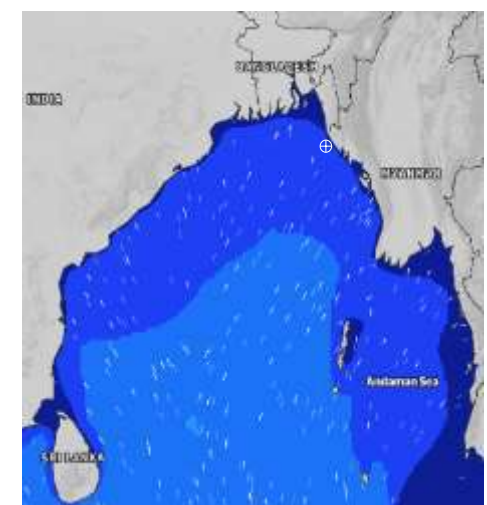
**05 Oct 2024**



**06 Oct 2024**



**07 Oct 2024**



Significant wave height (m)



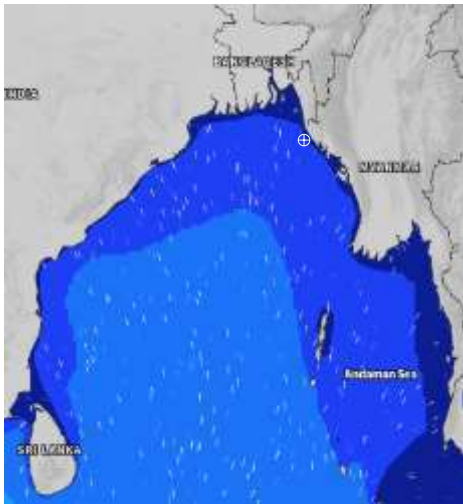
# MARINE WEATHER FORECAST (04 to 11 Oct 2024)

## 15 NM WEST OF ST. MARTIN'S LIGHT HOUSE (20° 37'N, 092° 03'E)

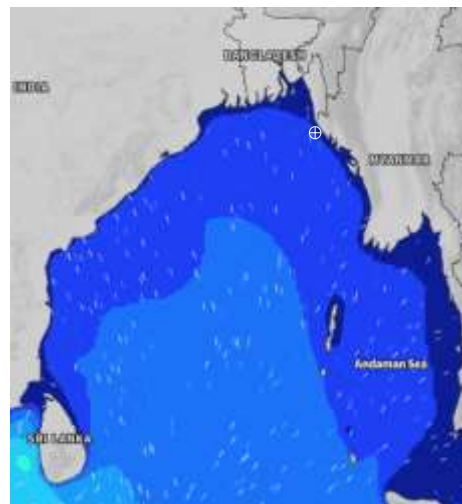


Date	Time	Air Temp (°C)		Sea Surface Temp (°C)	Baro Pressure (mbar)	Wind Direction	Wind Spd (kts)		Wave Ht (m)	Sea State	Humidity (%)	Prob of Rain
		Max	Min				Max	Avg				
08-10-24 (Tuesday)	0001	31	26	29	1012	WNW	6	5	0.9	3	91	12% (0.0 mm)
	0600			29	1011	NW	4	3	0.9	3	92	15% (0.0 mm)
	1200			29	1013	NW	4	3	0.8	3	74	37% (0.2 mm)
	1800			29	1010	WNW	6	5	0.8	3	84	12% (0.0 mm)
09-10-24 (Wednesday)	0001	31	26	29	1011	WNW	4	3	0.8	3	91	21% (0.0 mm)
	0600			29	1009	W	4	3	0.7	3	93	24% (0.0 mm)
	1200			29	1012	W	4	3	0.7	3	76	22% (0.0 mm)
	1800			29	1008	W	9	8	0.7	3	83	16% (0.0 mm)
10-10-24 (Thursday)	0001	31	26	29	1010	WNW	5	4	0.7	3	92	18% (0.0 mm)
	0600			28	1009	WNW	5	4	0.6	3	93	33% (0.2 mm)
	1200			29	1011	WNW	5	4	0.6	3	78	40% (0.3 mm)
	1800			29	1007	WNW	9	8	0.6	3	84	12% (0.0 mm)
11-10-24 (Friday)	0001	31	26	29	1010	WNW	8	9	0.6	3	92	15% (0.0 mm)
	0600			28	1008	WNW	9	8	0.7	3	93	37% (0.2 mm)
	1200			29	1011	WNW	5	4	0.7	3	78	43% (0.4 mm)
	1800			29	1007	WNW	10	9	0.8	3	85	19% (0.0 mm)

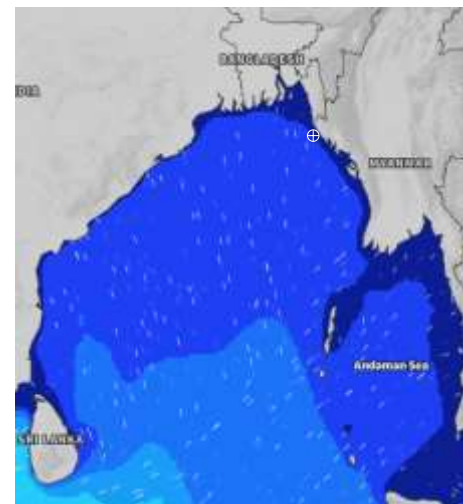
**08 Oct 2024**



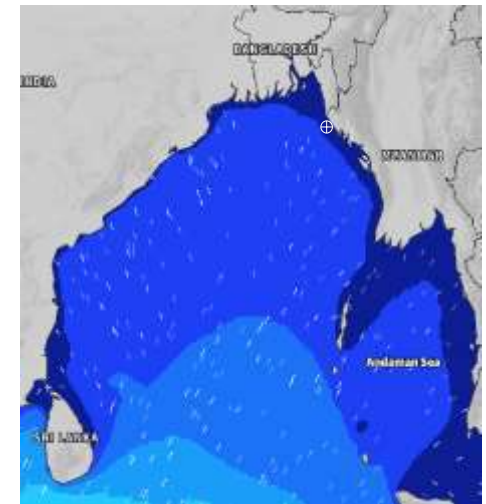
**09 Oct 2024**



**10 Oct 2024**



**11 Oct 2024**



Significant wave height (m)

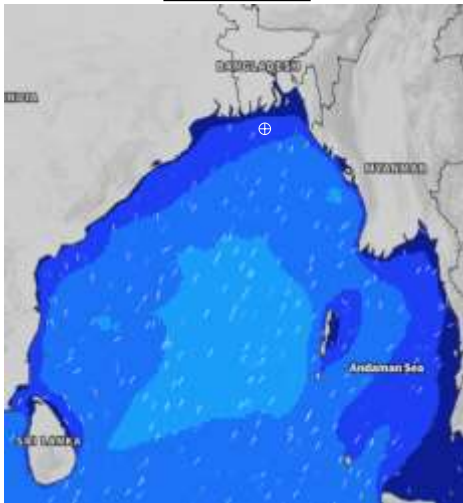


## MARINE WEATHER FORECAST (04 to 11 Oct 2024) 40 NM ESE OF PAYRA FAIRWAY (21° 07' N, 090° 45' E)

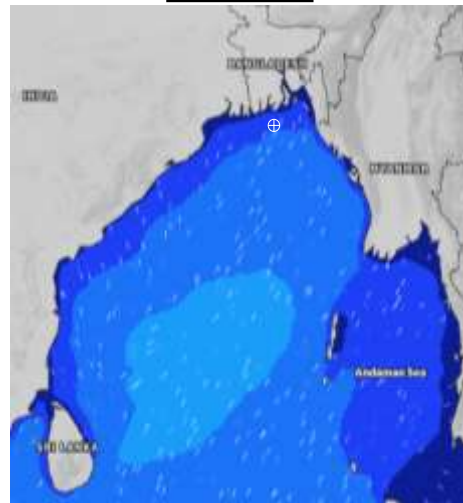


Date	Time	Air Temp (°C)		Sea Surface Temp (°C)	Baro Pressure (mbar)	Wind Direction	Wind Spd (kts)		Wave Ht (m)	Sea State	Humidity (%)	Prob of Rain
		Max	Min				Max	Avg				
04-10-24 (Friday)	0001	29	27	29	1006	S	12	11	1.2	3	91	24% (0.0 mm)
	0600			28	1005	S	9	8	1.2	3	96	32% (0.2 mm)
	1200			29	1007	S	13	12	1.2	3	87	98% (8.8 mm)
	1800			29	1006	SSE	13	12	1.3	4	88	24% (0.0 mm)
05-10-24 (Saturday)	0001	30	27	29	1007	S	15	14	1.1	3	90	58% (0.5 mm)
	0600			29	1007	S	14	13	1.1	3	90	32% (0.2 mm)
	1200			29	1009	S	12	11	1.4	4	83	40% (0.4 mm)
	1800			29	1007	SSE	9	8	1.2	3	86	10% (0.0 mm)
06-10-24 (Sunday)	0001	30	27	29	1009	SSE	8	7	1.2	3	88	11% (0.0 mm)
	0600			28	1009	SE	9	8	1.0	3	90	32% (0.2 mm)
	1200			29	1010	SSE	7	6	0.9	3	79	30% (0.2 mm)
	1800			29	1009	SSE	9	8	0.9	3	84	10% (0.0 mm)
07-10-24 (Monday)	0001	31	27	29	1011	S	8	7	0.9	3	89	24% (0.0 mm)
	0600			29	1012	SSE	6	5	0.9	3	90	59% (0.4 mm)
	1200			29	1012	SSE	4	3	0.8	3	78	54% (0.4 mm)
	1800			29	1011	SW	5	4	0.8	3	84	10% (0.0 mm)

**04 Oct 2024**



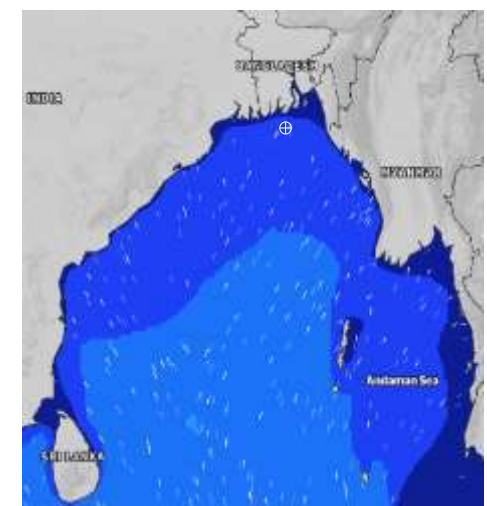
**05 Oct 2024**



**06 Oct 2024**



**07 Oct 2024**



Significant wave height (m)



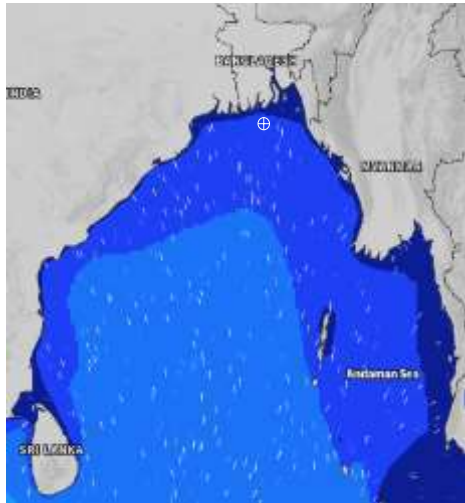


# MARINE WEATHER FORECAST (04 to 11 Oct 2024) 40 NM ESE OF PAYRA FAIRWAY (21° 07' N, 090° 45' E)

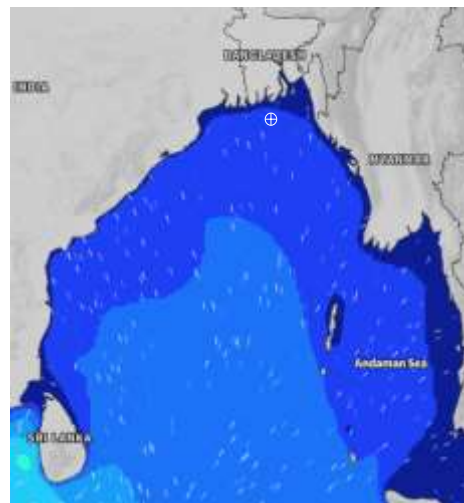


Date	Time	Air Temp (°C)		Sea Surface Temp (°C)	Baro Pressure (mbar)	Wind Direction	Wind Spd (kts)		Wave Ht (m)	Sea State	Humidity (%)	Prob of Rain
		Max	Min				Max	Avg				
08-10-24 (Tuesday)	0001	31	27	29	1011	S	6	5	1.0	3	89	18% (0.0 mm)
	0600			29	1012	SSW	4	3	1.0	3	93	20% (0.0 mm)
	1200			29	1012	S	5	4	1.0	3	75	37% (0.0 mm)
	1800			29	1010	SSW	5	4	0.9	3	81	12% (0.0 mm)
09-10-24 (Wednesday)	0001	31	27	29	1010	S	7	6	0.9	3	90	22% (0.0 mm)
	0600			29	1010	SSE	7	6	0.8	3	91	24% (0.0 mm)
	1200			29	1010	SSE	9	8	0.8	3	76	47% (0.4 mm)
	1800			29	1008	SSE	8	7	0.8	3	82	12% (0.0 mm)
10-10-24 (Thursday)	0001	31	27	29	1009	SSW	7	6	0.8	3	90	23% (0.0 mm)
	0600			29	1009	S	7	6	0.7	3	92	36% (0.2 mm)
	1200			29	1009	SSE	8	7	0.7	3	76	54% (0.5 mm)
	1800			29	1008	SSE	7	6	0.7	3	82	11% (0.0 mm)
11-10-24 (Friday)	0001	31	27	29	1009	SSW	8	7	0.7	3	90	34% (0.2 mm)
	0600			29	1010	S	7	6	0.7	3	94	50% (0.5 mm)
	1200			29	1010	SSE	6	5	0.8	3	78	52% (0.5 mm)
	1800			29	1008	SSE	6	5	0.8	3	82	10% (0.0 mm)

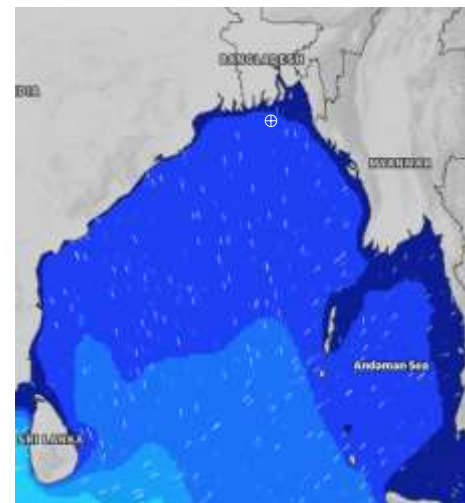
**08 Oct 2024**



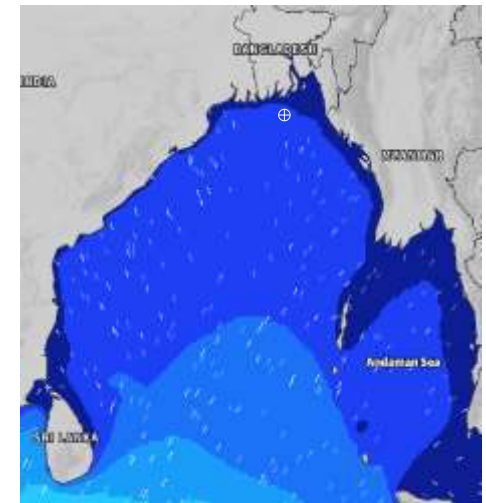
**09 Oct 2024**



**10 Oct 2024**



**11 Oct 2024**



Significant wave height (m)



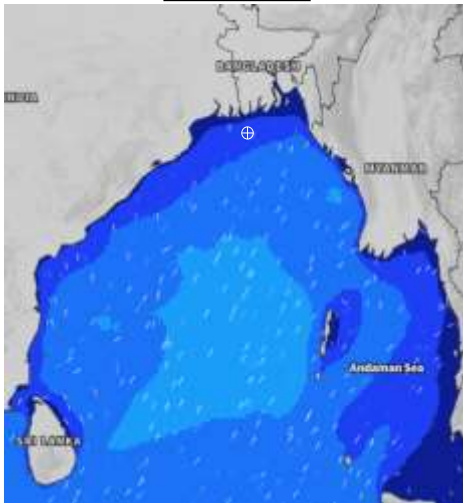
# MARINE WEATHER FORECAST (04 to 11 Oct 2024)

## 10 NM SOUTH OF MONGLA FAIRWAY (21° 16' N, 089° 34' E)

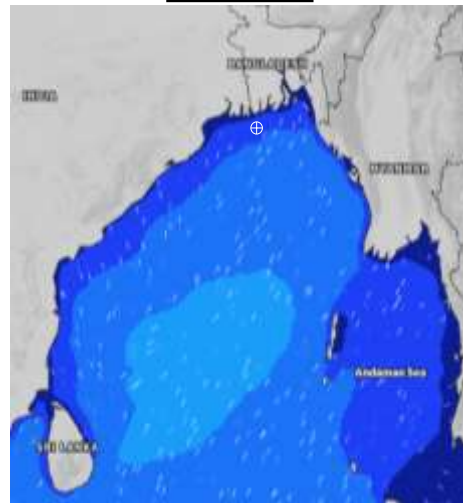


Date	Time	Air Temp (°C)		Sea Surface Temp (°C)	Baro Pressure (mbar)	Wind Direction	Wind Spd (kts)		Wave Ht (m)	Sea State	Humidity (%)	Prob of Rain
		Max	Min				Max	Avg				
04-10-24 (Friday)	0001	29	26	29	1005	SSW	10	9	1.0	3	94	61% (0.6 mm)
	0600			29	1004	SSW	10	9	1.0	3	92	54% (0.5 mm)
	1200			29	1006	SSW	8	7	1.0	3	86	49% (0.5 mm)
	1800			29	1005	S	10	9	1.1	3	91	47% (0.4 mm)
05-10-24 (Saturday)	0001	30	26	29	1006	S	14	13	1.2	3	94	70% (0.7 mm)
	0600			29	1007	S	13	12	1.3	4	96	63% (0.6 mm)
	1200			29	1008	S	11	10	1.2	3	82	54% (0.4 mm)
	1800			29	1007	S	10	9	1.1	3	88	24% (0.0 mm)
06-10-24 (Sunday)	0001	31	26	29	1008	S	9	8	1.1	3	94	24% (0.0 mm)
	0600			29	1009	SSE	6	5	1.0	3	96	24% (0.0 mm)
	1200			29	1010	SE	6	5	0.9	3	75	67% (0.6 mm)
	1800			29	1009	S	6	5	0.8	3	86	16% (0.0 mm)
07-10-24 (Monday)	0001	32	26	29	1011	S	8	7	0.8	3	92	18% (0.0 mm)
	0600			29	1012	SSE	6	5	0.8	3	94	47% (0.4 mm)
	1200			29	1012	SE	4	3	0.8	3	74	61% (0.6 mm)
	1800			29	1011	S	7	6	1.0	3	84	10% (0.0 mm)

**04 Oct 2024**



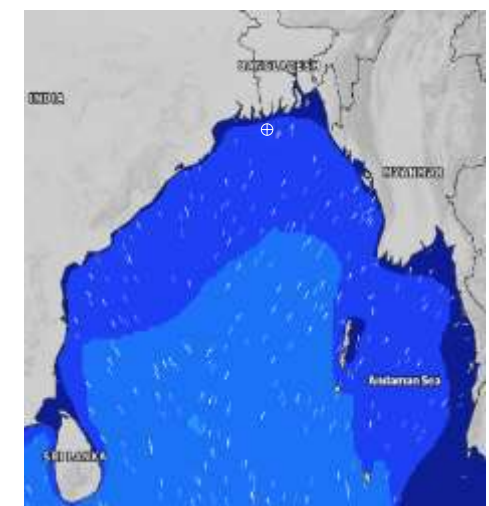
**05 Oct 2024**



**06 Oct 2024**



**07 Oct 2024**



Significant wave height (m)



## MARINE WEATHER FORECAST (04 to 11 Oct 2024) 10 NM SOUTH OF MONGLA FAIRWAY (21° 16' N, 089° 34' E)



Date	Time	Air Temp (°C)		Sea Surface Temp (°C)	Baro Pressure (mbar)	Wind Direction	Wind Spd (kts)		Wave Ht (m)	Sea State	Humidity (%)	Prob of Rain
		Max	Min				Max	Avg				
08-10-24 (Tuesday)	0001	32	26	29	1011	SSW	8	7	1.0	3	93	15% (0.0 mm)
	0600			29	1011	SSW	6	5	1.0	3	95	42% (0.4 mm)
	1200			29	1012	SSW	7	6	1.0	3	70	54% (0.6 mm)
	1800			29	1009	SW	7	6	1.0	3	82	10% (0.0 mm)
09-10-24 (Wednesday)	0001	32	26	29	1010	S	10	9	1.0	3	92	14% (0.0 mm)
	0600			28	1010	S	9	8	1.0	3	94	37% (0.2 mm)
	1200			29	1010	S	10	9	1.0	3	70	12% (0.0 mm)
	1800			29	1008	SW	9	8	1.0	3	81	15% (0.0 mm)
10-10-24 (Thursday)	0001	32	26	29	1009	SSW	8	7	0.9	3	90	37% (0.2 mm)
	0600			29	1009	S	9	8	0.9	3	91	50% (0.5 mm)
	1200			29	1009	SSE	10	9	0.9	3	73	58% (0.6 mm)
	1800			29	1008	S	8	7	0.8	3	81	15% (0.0 mm)
11-10-24 (Friday)	0001	32	26	29	1009	SSW	10	9	1.0	3	90	30% (0.2 mm)
	0600			28	1009	S	10	9	1.0	3	91	24% (0.0 mm)
	1200			29	1010	SSE	9	8	0.9	3	74	20% (0.0 mm)
	1800			29	1007	S	7	6	0.8	3	82	18% (0.0 mm)

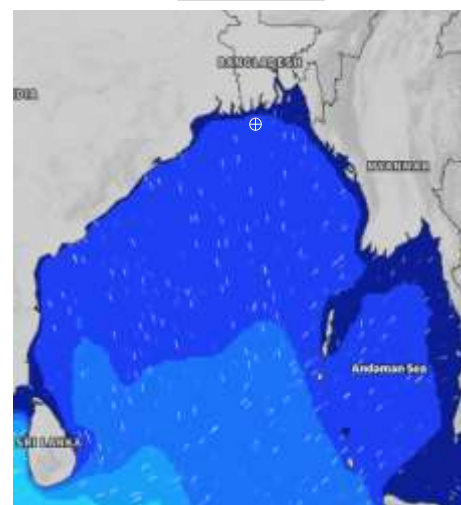
**08 Oct 2024**



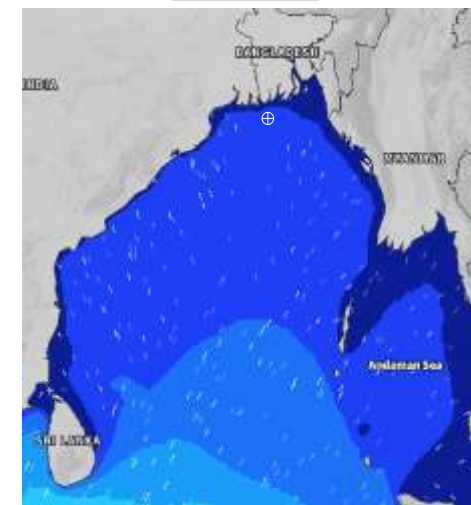
**09 Oct 2024**



**10 Oct 2024**



**11 Oct 2024**



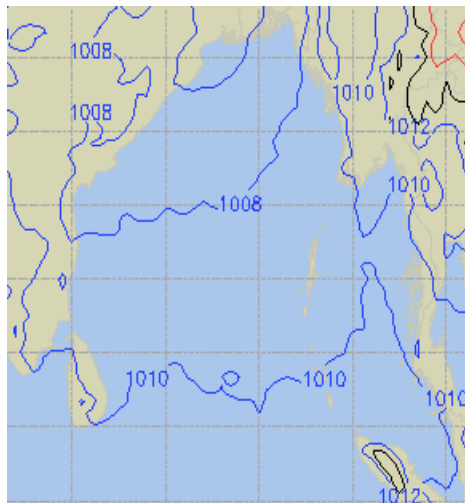
Significant wave height (m)



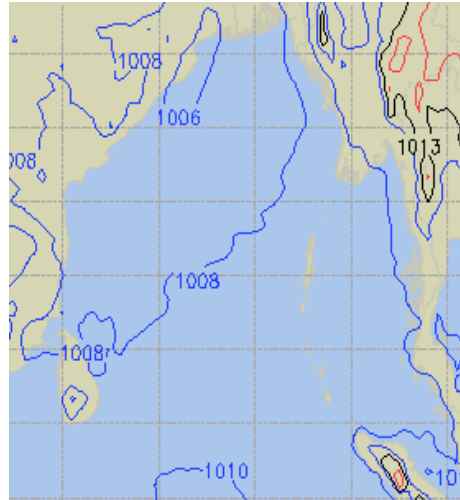
# PREDICTED SURFACE PRESSURE FORECAST (04 to 10 Oct 2024)



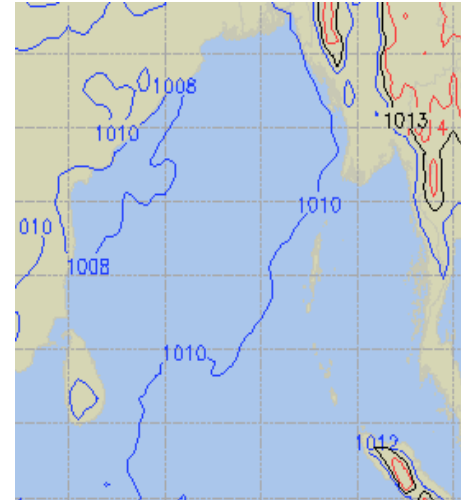
**04 Oct 2024**



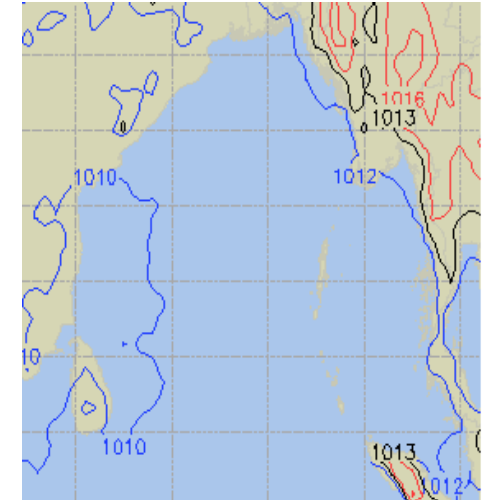
**05 Oct 2024**



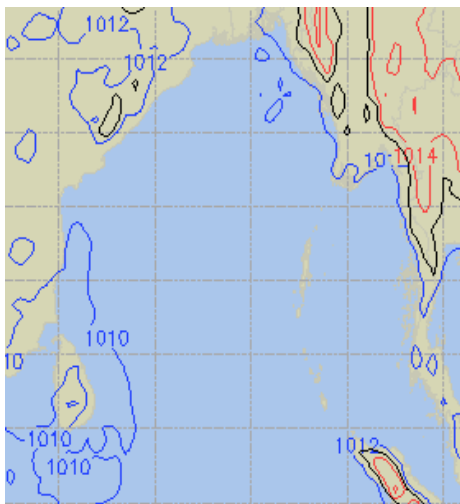
**06 Oct 2024**



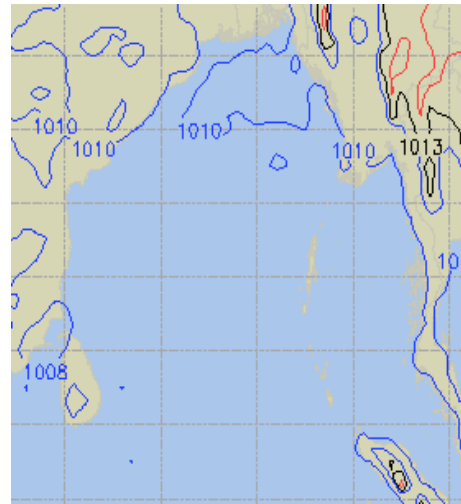
**07 Oct 2024**



**08 Oct 2024**



**09 Oct 2024**



**10 Oct 2024**

