



# SUMMARY OF MARINE WEATHER FORECAST COASTAL AREA OF BANGLADESH DATE: 04 TO 11 AUG 2024



Fleet forecast	<p>Due to strong monsoon deep convection is taking place and steep pressure gradient observed over North Bay.</p> <p>Maritime ports of Chattogram, Cox's Bazar, Mongla and Payra have been advised to keep hoisted LOCAL CAUTIONARY SIGNAL NO. THREE (R) THREE.</p>
Wind direction, speed	South/south-easterly 11 kts, (Temporary gusting up to 18 kts).
Wave height & sea state	Wave height: 0.2 to 2.0 m (Sea state:1 to 4).
Sea surface temperature	27°C - 29°C (May remain nearly unchanged).
Baro pressure	1002 - 1008 mb
Rainfall	Light to moderate rain/thunder showers over Bay of Bengal & adjoining area.

**Outlook for 04 to 11 Aug 2024: Rainfall activity is likely to continue.**

**MARINE WEATHER FORECAST- NEAR AUTHORITY BUOY (Lat 22° 12'N, Long 091° 38'E)**

**DATE : 04 to 11 Aug 2024**

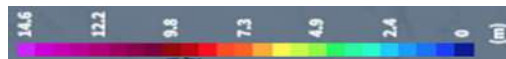
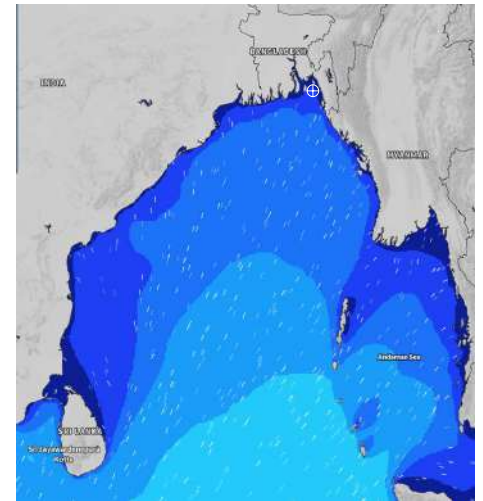
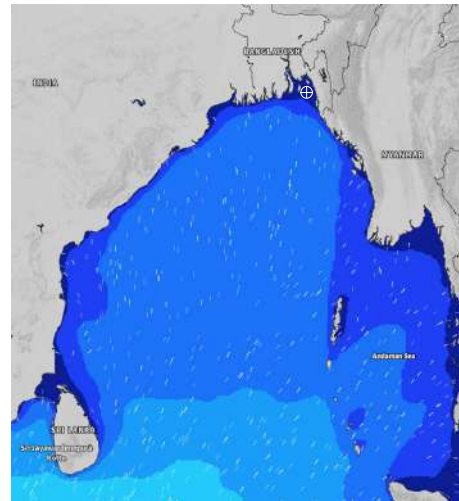
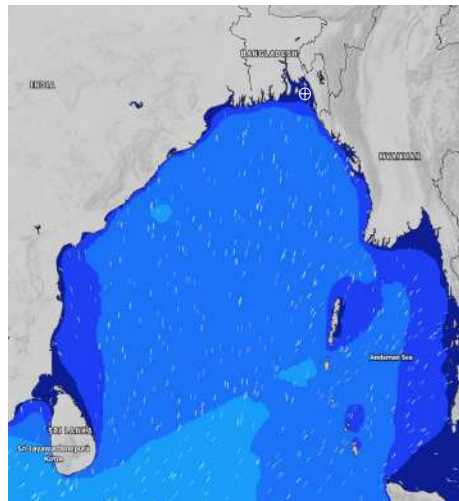
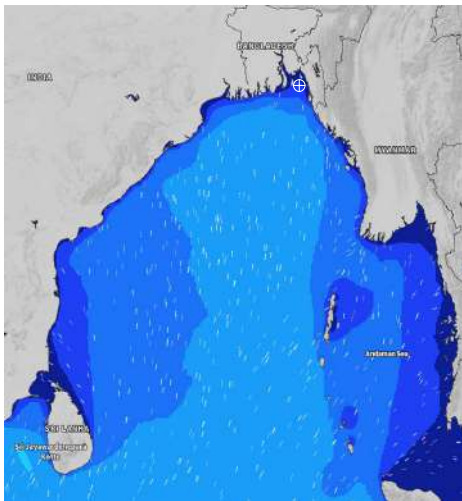
Date	Time	Max Wind Spd (kts)	Wind Direction	Wave Ht (m)	Sea State	Baro Pressure	Air Temp		Sea Surface Temp	Humidity (%)	Prob of Rain (%)	Sea State	Wave Ht (m)
							Max	Min					
04-08-24	0001	15	SSE	0.4	2	1008	29	26	27	90%	94% (5.6 mm)	0	0
	0600	13	SSE	0.3	2	1007			27	91%	84% (2.5 mm)	1	0 - 0.1
	1200	15	SSW	0.3	2	1007			28	82%	74% (0.7 mm)	2	0.1 - 0.5
	1800	13	S	0.3	2	1005			28	87%	32% (0.3 mm)	3	0.5 - 1.25
05-08-24	0001	13	SSE	0.3	2	1007	29	26	27	91%	52% (0.5 mm)	4	1.25 - 2.5
	0600	11	SSE	0.2	2	1007			26	94%	61% (0.6 mm)	5	2.5 - 4.0
	1200	10	SSE	0.2	2	1007			28	86%	64% (0.6 mm)	6	4.0 - 6.0
	1800	8	S	0.3	2	1005			27	87%	33% (0.3 mm)	7	6.0 - 9.0
06-08-24	0001	11	SSE	0.3	2	1006	29	26	27	91%	59% (0.6 mm)	8	9.0 - 14.0
	0600	11	SSE	0.2	2	1005			26	93%	84% (0.8 mm)	9	Over 14.0
	1200	10	S	0.3	2	1006			28	82%	81% (0.8 mm)		
	1800	11	S	0.3	2	1004			27	87%	34% (0.3 mm)		
07-08-24	0001	11	SSE	0.3	2	1005	29	26	27	90%	63% (0.6 mm)		
	0600	10	SE	0.3	2	1005			26	94%	61% (0.6 mm)		
	1200	11	SSE	0.3	2	1006			28	86%	83% (0.8 mm)		
	1800	12	SSE	0.3	2	1004			27	89%	42% (0.4 mm)		

**04 Aug 24 Sun (Probability 98%)**

**05 Aug 24 Mon (Probability 95%)**

**06 Aug 24 Tue (Probability 90%)**

**07 Aug 24 Wed (Probability 80%)**



Significant wave height (m)

**MARINE WEATHER FORECAST- NEAR AUTHORITY BUOY (Lat 22° 12'N, Long 091° 38'E)**

**DATE : 04 to 11 Aug 2024**

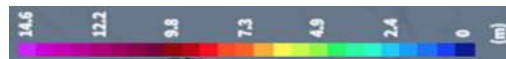
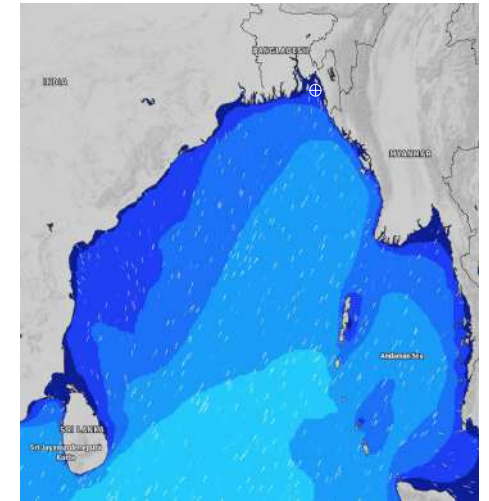
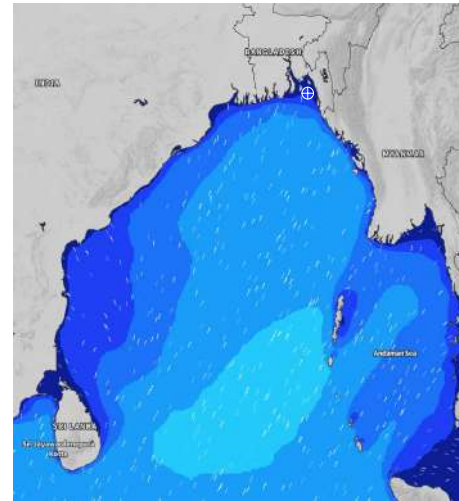
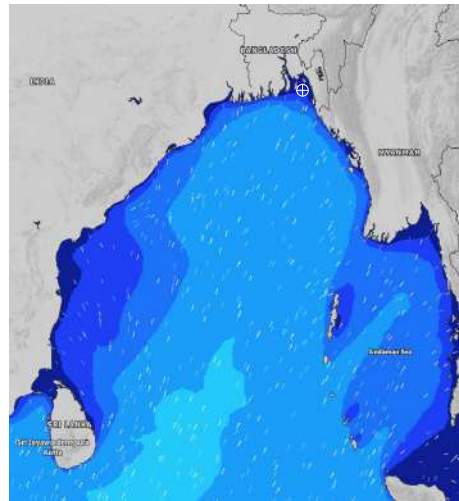
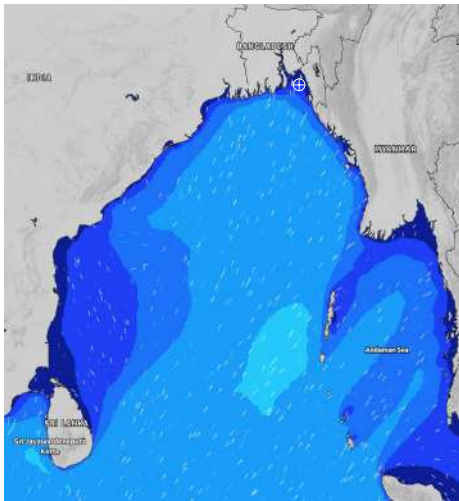
Date	Time	Max Wind Spd (kts)	Wind Direction	Wave Ht (m)	Sea State	Baro Pressure	Air Temp		Sea Surface Temp	Humidity (%)	Prob of Rain (%)	Sea State	Wave Ht (m)
							Max	Min					
08-08-24	0001	16	SSE	0.4	2	1007	30	26	27	91%	55% (0.5 mm)	0	0
	0600	14	SSE	0.3	2	1006			27	93%	61% (0.6 mm)	1	0 - 0.1
	1200	16	SSE	0.4	2	1007			28	85%	87% (0.9 mm)	2	0.1 - 0.5
	1800	17	SSE	0.4	2	1005			27	88%	45% (0.5 mm)	3	0.5 - 1.25
09-08-24	0001	17	SSE	0.4	2	1006	30	26	27	92%	52% (0.5 mm)	4	1.25 - 2.5
	0600	14	SSE	0.3	2	1006			27	93%	63% (0.6 mm)	5	2.5 - 4.0
	1200	16	S	0.4	2	1005			28	84%	69% (0.7 mm)	6	4.0 - 6.0
	1800	16	S	0.4	2	1004			28	88%	37% (0.4 mm)	7	6.0 - 9.0
10-08-24	0001	14	SSE	0.3	2	1005	30	26	27	92%	70% (0.7 mm)	8	9.0 - 14.0
	0600	14	SSE	0.3	2	1005			27	94%	63% (0.6 mm)	9	Over 14.0
	1200	15	SSW	0.4	2	1004			28	86%	66% (0.7 mm)		
	1800	14	S	0.3	2	1002			28	89%	36% (0.4 mm)		
11-08-24	0001	12	SSE	0.3	2	1004	30	26	27	91%	54% (0.5 mm)		
	0600	12	SE	0.3	2	1004			27	93%	51% (0.5 mm)		
	1200	13	SSE	0.3	2	1005			28	84%	63% (0.6 mm)		
	1800	12	SSE	0.3	2	1004			28	88%	32% (0.3 mm)		

**08 Aug 24 Thu (Probability 70%)**

**09 Aug 24 Fri (Probability 60%)**

**10 Aug 24 Sat (Probability 50%)**

**11 Aug 24 Sun (Probability 50%)**



Significant wave height (m)

**MARINE WEATHER FORECAST- 20 NM WEST OF ELEPHANT POINT (Lat 21° 10'N, Long 091° 42'E)**

**DATE : 04 to 11 Aug 2024**

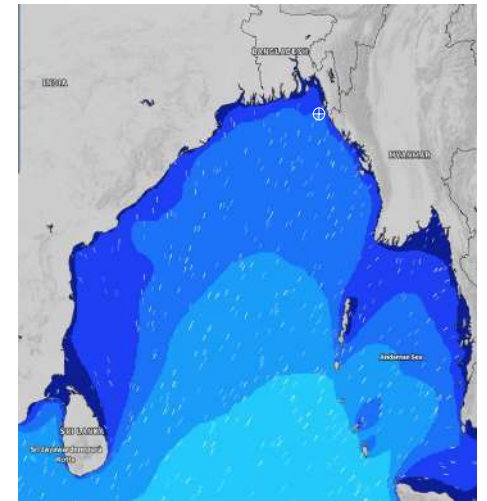
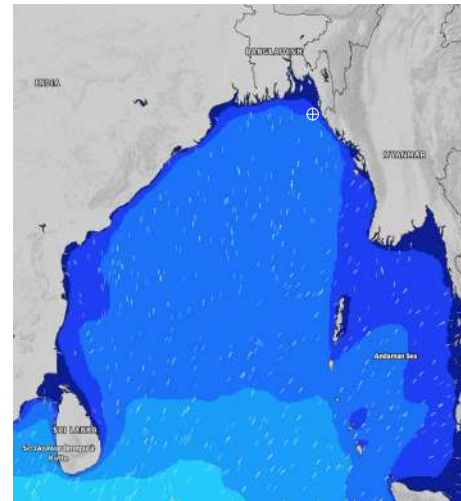
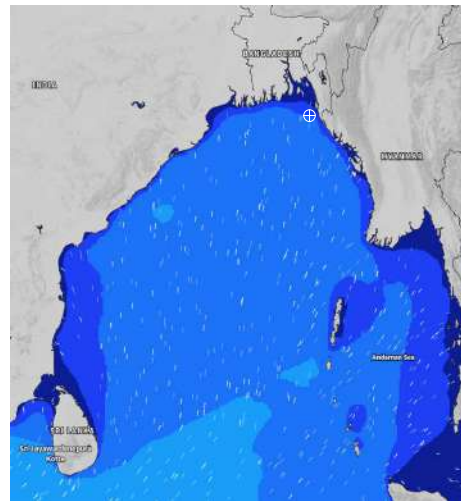
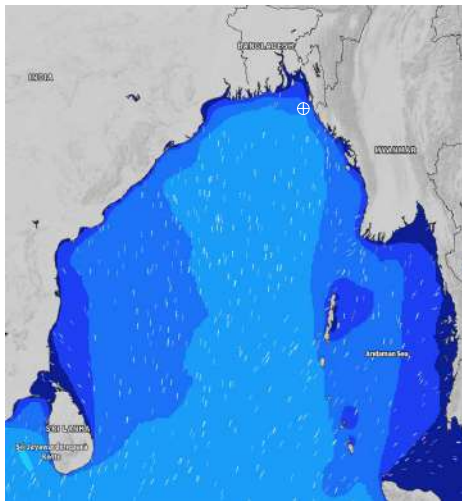
Date	Time	Max Wind Spd (kts)	Wind Direction	Wave Ht (m)	Sea State	Baro Pressure	Air Temp		Sea Surface Temp	Humidity (%)	Prob of Rain (%)	Sea State	Wave Ht (m)
							Max	Min					
04-08-24	0001	14	SSE	1.6	4	1008	29	26	28	92%	83% (0.9 mm)	0	0
	0600	14	SE	1.5	4	1007			27	95%	79% (0.8 mm)	1	0 - 0.1
	1200	15	SSE	1.4	4	1007			28	86%	95% (2.6 mm)	2	0.1 - 0.5
	1800	10	S	1.3	4	1005			28	89%	45% (0.5 mm)	3	0.5 - 1.25
05-08-24	0001	10	S	1.3	4	1007	29	26	27	93%	66% (0.6 mm)	4	1.25 - 2.5
	0600	9	SSE	1.2	3	1007			27	94%	77% (0.8 mm)	5	2.5 - 4.0
	1200	10	SSE	1.1	3	1007			28	84%	58% (0.6 mm)	6	4.0 - 6.0
	1800	9	S	1.0	3	1005			28	87%	36% (0.2 mm)	7	6.0 - 9.0
06-08-24	0001	10	S	1.0	3	1007	30	26	27	91%	88% (0.8 mm)	8	9.0 - 14.0
	0600	11	S	1.0	3	1006			27	93%	67% (0.6 mm)	9	Over 14.0
	1200	8	S	0.9	3	1006			28	86%	76% (0.7 mm)		
	1800	11	S	0.9	3	1004			28	89%	45% (0.5 mm)		
07-08-24	0001	10	SSE	1.0	3	1005	30	26	27	92%	84% (0.8 mm)		
	0600	8	S	1.0	3	1005			27	95%	63% (0.6 mm)		
	1200	11	SSE	1.1	3	1006			28	85%	76% (0.7 mm)		
	1800	12	SSE	1.1	3	1005			28	89%	48% (0.5 mm)		

**04 Aug 24 Sun (Probability 98%)**

**05 Aug 24 Mon (Probability 95%)**

**06 Aug 24 Tue (Probability 90%)**

**07 Aug 24 Wed (Probability 80%)**



Significant wave height (m)

**MARINE WEATHER FORECAST- 20 NM WEST OF ELEPHANT POINT (Lat 21° 10'N, Long 091° 42'E)**

**DATE : 04 to 11 Aug 2024**

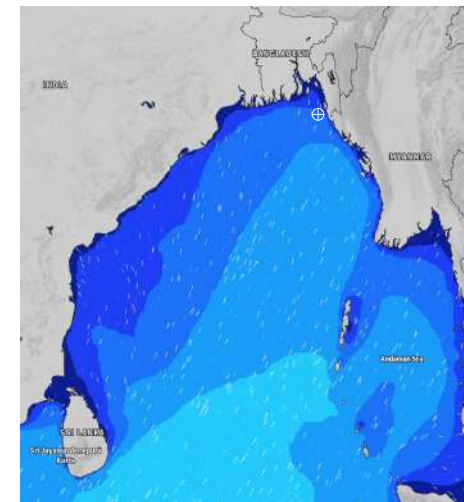
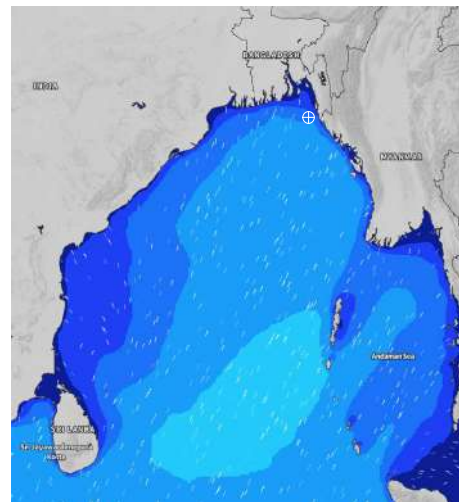
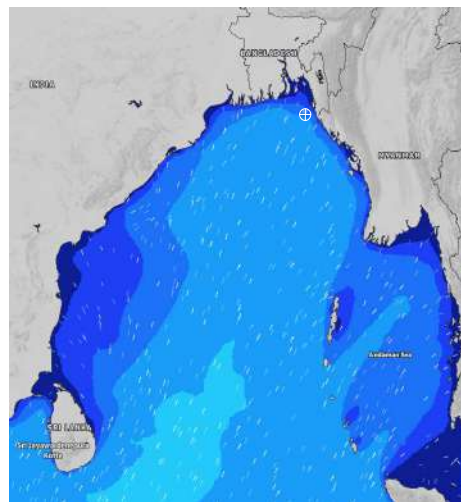
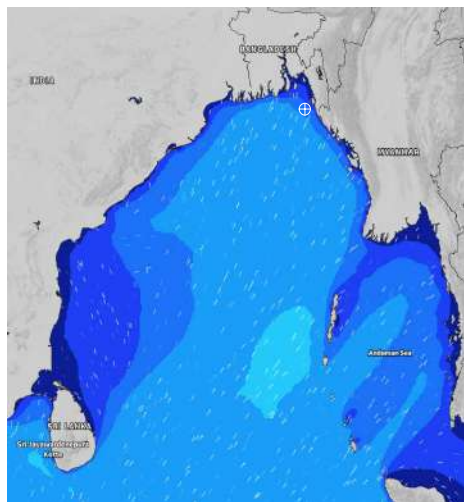
Date	Time	Max Wind Spd (kts)	Wind Direction	Wave Ht (m)	Sea State	Baro Pressure	Air Temp		Sea Surface Temp	Humidity (%)	Prob of Rain (%)	Sea State	Wave Ht (m)
							Max	Min					
08-08-24	0001	18	SSE	1.5	4	1007	30	26	27	92%	69% (0.8 mm)	0	0
	0600	14	SSE	1.4	4	1006			27	94%	88% (1.4 mm)	1	0 - 0.1
	1200	17	SSE	1.6	4	1007			28	82%	77% (1.2 mm)	2	0.1 - 0.5
	1800	16	SSE	1.6	4	1005			28	87%	56% (0.7 mm)	3	0.5 - 1.25
09-08-24	0001	15	SSE	1.6	4	1007	30	26	28	91%	75% (0.8 mm)	4	1.25 - 2.5
	0600	14	SE	1.4	4	1006			27	94%	67% (0.8 mm)	5	2.5 - 4.0
	1200	16	SSE	1.5	4	1006			28	82%	63% (0.7 mm)	6	4.0 - 6.0
	1800	12	S	1.4	4	1004			28	88%	45% (0.5 mm)	7	6.0 - 9.0
10-08-24	0001	10	S	1.4	4	1006	30	26	28	93%	67% (0.7 mm)	8	9.0 - 14.0
	0600	14	SSE	1.4	4	1005			27	95%	66% (0.7 mm)	9	Over 14.0
	1200	17	SSE	1.4	4	1006			28	84%	58% (0.6 mm)		
	1800	10	S	1.3	4	1003			29	88%	47% (0.5 mm)		
11-08-24	0001	11	SSE	1.2	3	1004	30	26	28	92%	64% (0.6 mm)		
	0600	12	SE	1.2	3	1005			27	94%	65% (0.7 mm)		
	1200	13	SE	1.3	4	1004			28	84%	56% (0.6 mm)		
	1800	10	SSE	1.2	3	1003			28	88%	46% (0.5 mm)		

**08 Aug 24 Thu (Probability 70%)**

**09 Aug 24 Fri (Probability 60%)**

**10 Aug 24 Sat (Probability 50%)**

**11 Aug 24 Sun (Probability 50%)**



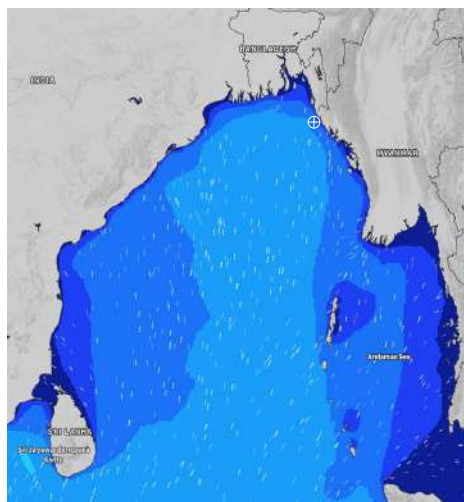
Significant wave height (m)

**MARINE WEATHER FORECAST- 15 NM WEST OF ST. MARTIN'S LIGHT HOUSE (Lat 20° 37'N, Long 092° 03' E)**

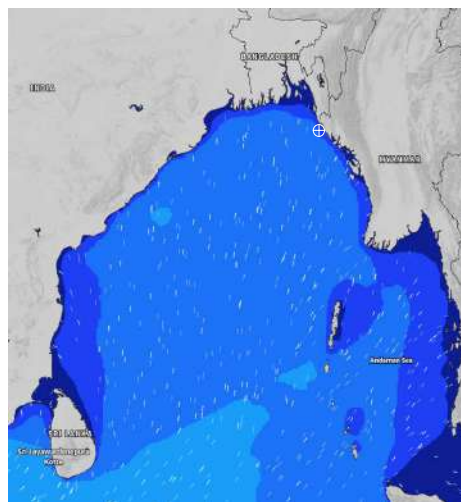
**DATE : 04 to 11 Aug 2024**

Date	Time	Max Wind Spd (kts)	Wind Direction	Wave Ht (m)	Sea State	Baro Pressure	Air Temp		Sea Surface Temp	Humidity (%)	Prob of Rain(%)	Sea State	Wave Ht (m)
							Max	Min					
04-08-24	0001	11	S	1.9	4	1008	29	26	28	92%	96% (3.6 mm)	0	0
	0600	10	SE	1.7	4	1006			27	93%	86% (1.5 mm)	1	0 - 0.1
	1200	10	SSE	1.7	4	1008			28	84%	75% (0.9 mm)	2	0.1 - 0.5
	1800	11	SSW	1.6	4	1005			28	91%	67% (0.8 mm)	3	0.5 - 1.25
05-08-24	0001	10	S	1.5	4	1008	29	26	28	93%	76% (0.7 mm)	4	1.25 - 2.5
	0600	8	S	1.5	4	1007			27	95%	75% (0.8 mm)	5	2.5 - 4.0
	1200	7	SE	1.3	4	1008			28	85%	73% (0.8 mm)	6	4.0 - 6.0
	1800	6	S	1.2	3	1005			28	88%	47% (0.6 mm)	7	6.0 - 9.0
06-08-24	0001	5	SW	1.1	3	1007	29	26	27	91%	85% (0.8 mm)	8	9.0 - 14.0
	0600	6	WSW	1.1	3	1005			27	94%	86% (0.9 mm)	9	Over 14.0
	1200	7	SE	1.1	3	1007			28	82%	78% (0.8 mm)		
	1800	9	SSE	1.1	3	1004			27	89%	67% (0.7 mm)		
07-08-24	0001	10	SSW	1.2	3	1006	30	26	27	93%	86% (0.8 mm)		
	0600	9	SW	1.2	3	1004			27	94%	88% (0.9 mm)		
	1200	8	S	1.2	3	1006			28	81%	76% (0.8 mm)		
	1800	10	SSW	1.3	4	1004			27	88%	65% (0.6 mm)		

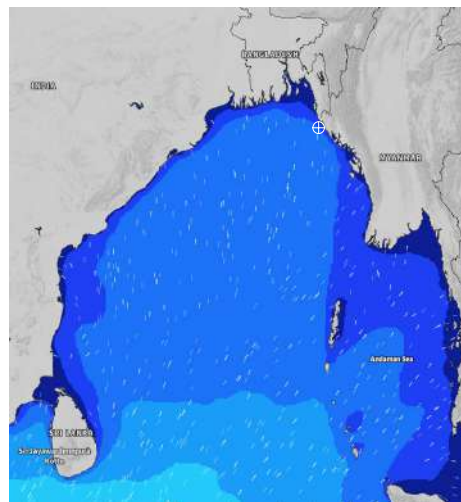
**04 Aug 24 Sun (Probability 98%)**



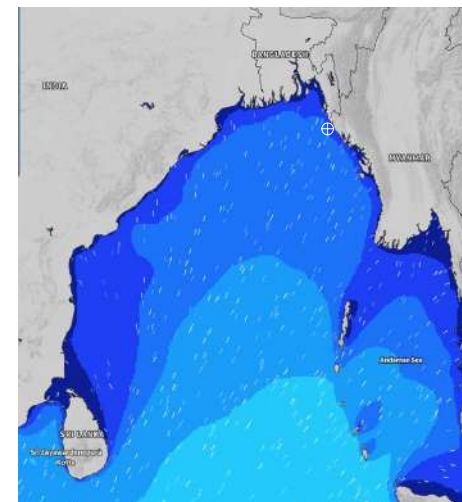
**05 Aug 24 Mon (Probability 95%)**



**06 Aug 24 Tue (Probability 90%)**



**07 Aug 24 Wed (Probability 80%)**



Significant wave height (m)

# MARINE WEATHER FORECAST- 15 NM WEST OF ST. MARTIN'S LIGHT HOUSE (Lat 20° 37'N, Long 092° 03'E)

**DATE : 04 to 11 Aug 2024**

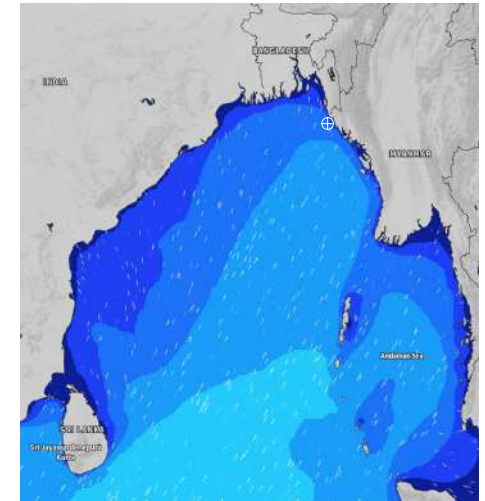
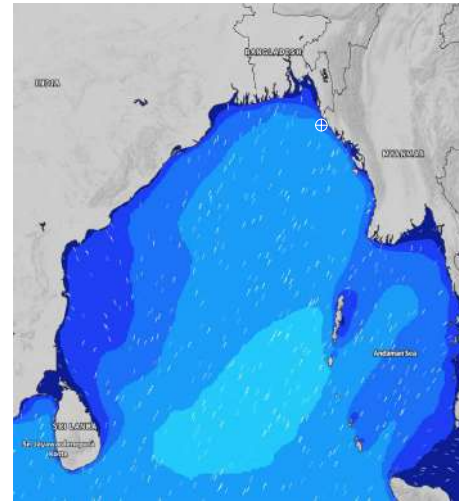
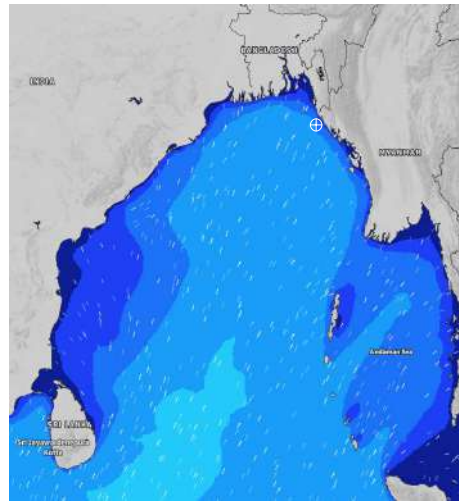
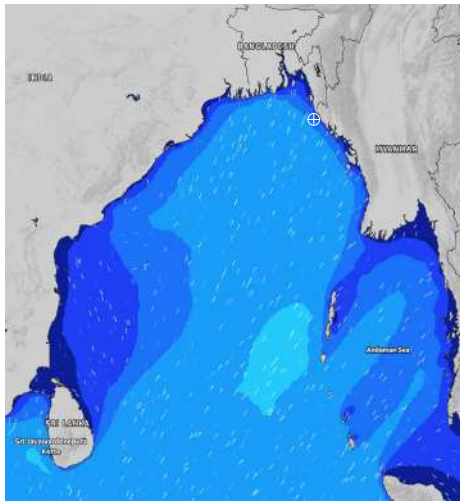
Date	Time	Max Wind Spd (kts)	Wind Direction	Wave Ht (m)	Sea State	Baro Pressure	Air Temp		Sea Surface Temp	Humidity (%)	Prob of Rain (%)	Sea State	Wave Ht (m)
							Max	Min					
08-08-24	0001	15	S	1.6	4	1007	30	30	28	92%	89% (1.5 mm)	0	0
	0600	12	S	1.7	4	1006			27	94%	87% (0.9 mm)	1	0 - 0.1
	1200	12	SSE	1.8	4	1008			28	86%	75% (0.8 mm)	2	0.1 - 0.5
	1800	11	SSE	1.8	4	1006			28	89%	76% (0.8 mm)	3	0.5 - 1.25
09-08-24	0001	10	SSE	1.8	4	1008	30	27	28	91%	78% (0.9 mm)	4	1.25 - 2.5
	0600	7	S	1.7	4	1005			27	94%	77% (0.8 mm)	5	2.5 - 4.0
	1200	8	SSE	1.7	4	1007			28	82%	66% (0.7 mm)	6	4.0 - 6.0
	1800	12	SSW	1.7	4	1004			28	87%	58% (0.6 mm)	7	6.0 - 9.0
10-08-24	0001	11	SSW	1.7	4	1006	30	27	28	90%	67% (0.7 mm)	8	9.0 - 14.0
	0600	9	S	1.7	4	1005			27	93%	65% (0.7 mm)	9	Over 14.0
	1200	9	SSE	1.7	4	1006			28	82%	56% (0.6 mm)		
	1800	10	S	1.6	4	1003			28	88%	32% (0.3 mm)		
11-08-24	0001	8	S	1.6	4	1004	30	27	28	90%	64% (0.6 mm)		
	0600	8	SSW	1.6	4	1003			27	92%	63% (0.6 mm)		
	1200	7	SW	1.5	4	1004			28	79%	56% (0.5 mm)		
	1800	9	SSW	1.6	4	1003			28	88%	38% (0.4 mm)		

**08 Aug 24 Thu (Probability 70%)**

**09 Aug 24 Fri (Probability 60%)**

**10 Aug 24 Sat (Probability 50%)**

**11 Aug 24 Sun (Probability 50%)**



Significant wave height (m)

**MARINE WEATHER FORECAST- 40 NM ESE OF PAYRA FAIRWAY (Lat 21° 07' N, Long 090° 45' E)**

**DATE : 04 to 11 Aug 2024**

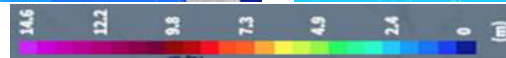
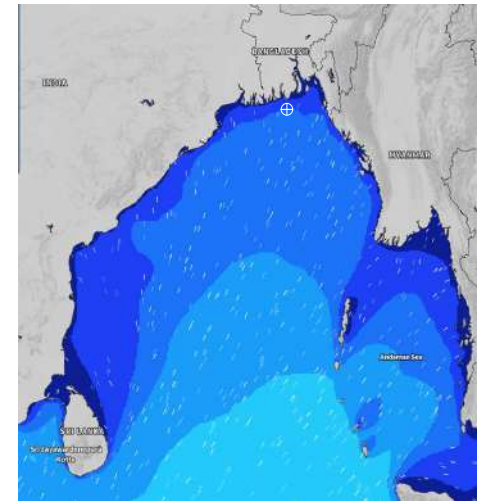
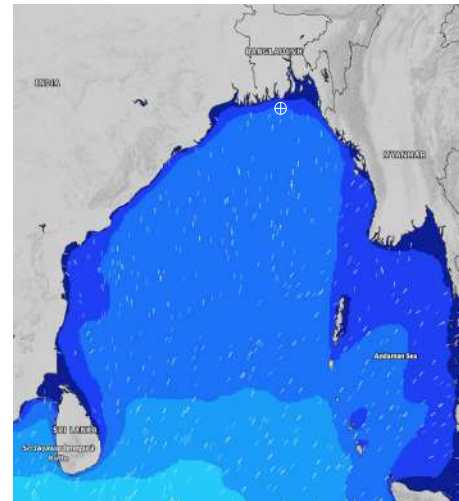
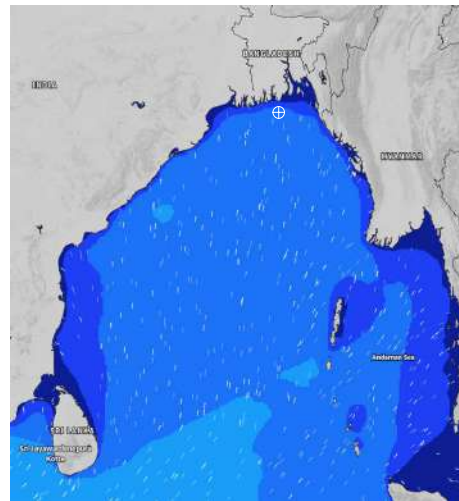
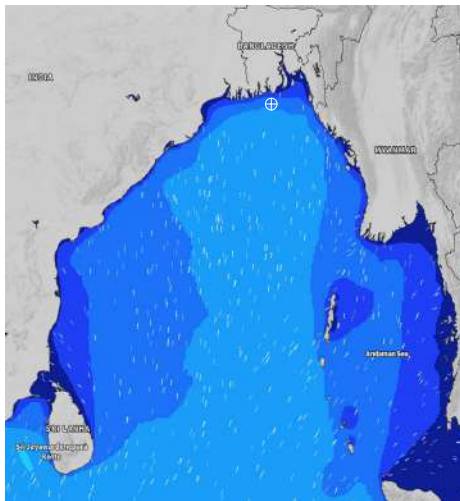
Date	Time	Max Wind Spd (kts)	Wind Direction	Wave Ht (m)	Sea State	Baro Pressure	Air Temp		Sea Surface Temp	Humidity (%)	Prob of Rain (%)	Sea State	Wave Ht (m)
							Max	Min					
04-08-24	0001	14	SSW	2.0	4	1007	29	26	28	92%	89% (2.4 mm)	0	0
	0600	9	SSW	1.8	4	1006			27	94%	84% (1.5 mm)	1	0 - 0.1
	1200	8	S	1.7	4	1007			28	81%	83% (1.4 mm)	2	0.1 - 0.5
	1800	11	SSW	1.7	4	1005			28	88%	46% (0.5 mm)	3	0.5 - 1.25
05-08-24	0001	11	S	1.6	4	1007	29	26	28	93%	78% (0.8 mm)	4	1.25 - 2.5
	0600	4	SSW	1.5	4	1007			27	95%	87% (1.4 mm)	5	2.5 - 4.0
	1200	6	S	1.4	4	1007			28	86%	72% (0.8 mm)	6	4.0 - 6.0
	1800	6	SSW	1.3	4	1005			28	91%	45% (0.5 mm)	7	6.0 - 9.0
06-08-24	0001	11	SSW	1.3	4	1006	29	26	28	92%	76% (0.8 mm)	8	9.0 - 14.0
	0600	13	SSW	1.3	4	1005			27	94%	66% (0.7 mm)	9	Over 14.0
	1200	8	SSW	1.3	4	1005			28	83%	81% (0.8 mm)		
	1800	9	S	1.3	4	1004			28	90%	52% (0.5 mm)		
07-08-24	0001	12	S	1.4	4	1005	29	26	28	92%	74% (0.8 mm)		
	0600	11	SSW	1.4	4	1004			28	95%	63% (0.7 mm)		
	1200	10	SW	1.4	4	1005			29	84%	85% (0.8 mm)		
	1800	11	SSW	1.4	4	1004			29	91%	56% (0.5 mm)		

**04 Aug 24 Sun (Probability 98%)**

**05 Aug 24 Mon (Probability 95%)**

**06 Aug 24 Tue (Probability 90%)**

**07 Aug 24 Wed (Probability 80%)**



Significant wave height (m)



**MARINE WEATHER FORECAST- 40 NM ESE OF PAYRA FAIRWAY (Lat 21° 07' N, Long 090° 45' E)**

**DATE : 04 to 11 Aug 2024**

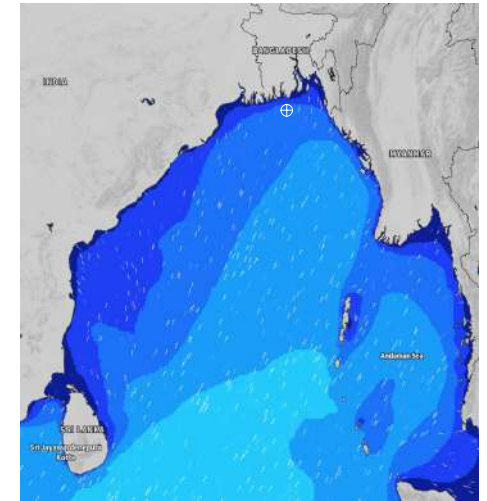
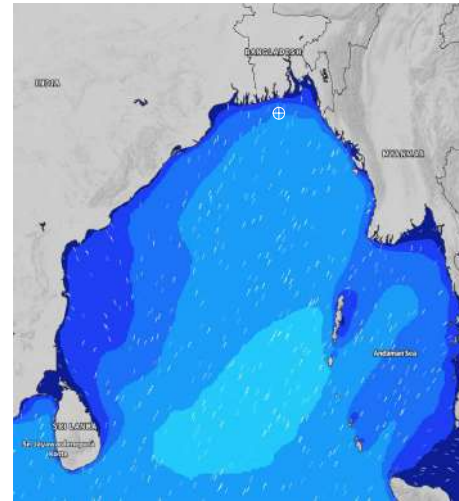
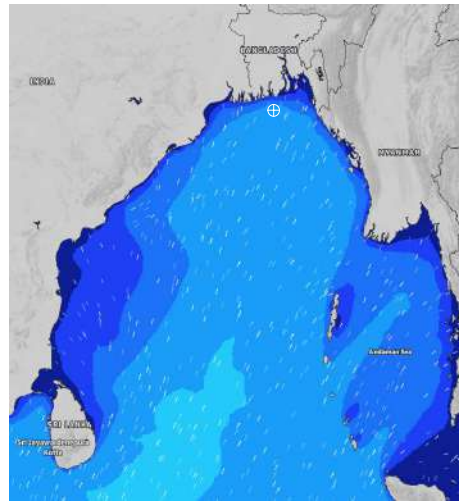
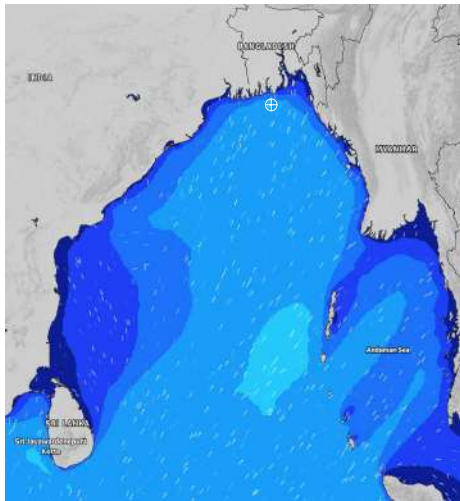
Date	Time	Max Wind Spd (kts)	Wind Direction	Wave Ht (m)	Sea State	Baro Pressure	Air Temp		Sea Surface Temp	Humidity (%)	Prob of Rain (%)	Sea State	Wave Ht (m)
							Max	Min					
08-08-24	0001	16	S	1.7	4	1006	30	27	28	92%	67% (0.7 mm)	0	0
	0600	17	SSW	2.0	4	1005			27	95%	66% (0.7 mm)	1	0 - 0.1
	1200	16	SSW	2.0	4	1006			28	83%	65% (0.7 mm)	2	0.1 - 0.5
	1800	15	S	1.9	4	1004			28	89%	54% (0.5 mm)	3	0.5 - 1.25
09-08-24	0001	15	SSW	1.9	4	1006	30	27	28	91%	76% (0.8 mm)	4	1.25 - 2.5
	0600	12	SW	1.8	4	1005			27	94%	86% (0.9 mm)	5	2.5 - 4.0
	1200	11	SSW	1.7	4	1006			28	82%	65% (0.7 mm)	6	4.0 - 6.0
	1800	14	SSW	1.8	4	1003			28	86%	44% (0.5 mm)	7	6.0 - 9.0
10-08-24	0001	13	SSW	1.8	4	1005	30	27	28	90%	83% (0.8 mm)	8	9.0 - 14.0
	0600	11	SSW	1.8	4	1004			28	93%	66% (0.7 mm)	9	Over 14.0
	1200	10	SSW	1.7	4	1005			29	86%	64% (0.6 mm)		
	1800	10	SSW	1.7	4	1002			29	88%	47% (0.5 mm)		
11-08-24	0001	12	S	1.6	4	1004	30	27	28	92%	86% (0.8 mm)		
	0600	11	S	1.6	4	1003			28	94%	65% (0.6 mm)		
	1200	13	SSW	1.6	4	1004			29	82%	63% (0.6 mm)		
	1800	12	SSW	1.6	4	1002			29	89%	45% (0.5 mm)		

**08 Aug 24 Thu (Probability 70%)**

**09 Aug 24 Fri (Probability 60%)**

**10 Aug 24 Sat (Probability 50%)**

**11 Aug 24 Sun (Probability 50%)**



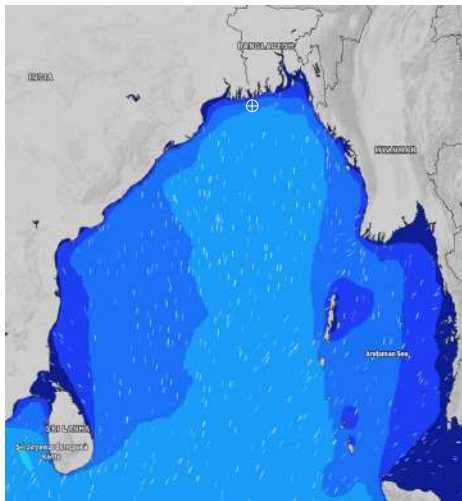
Significant wave height (m)

**MARINE WEATHER FORECAST- 10 NM SOUTH OF MONGLA FAIRWAY (Lat 21° 16'N, Long 089° 34'E)**

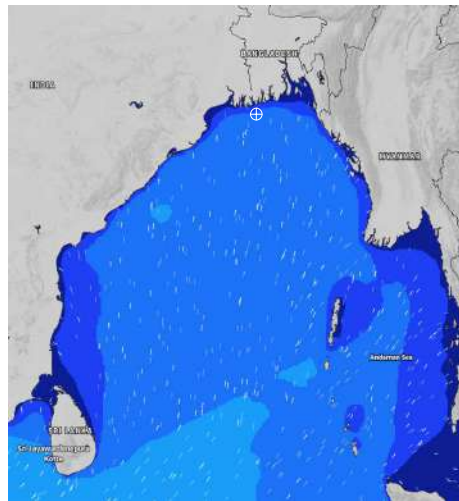
**DATE : 04 to 11 Aug 2024**

Date	Time	Max Wind Spd (kts)	Wind Direction	Wave Ht (m)	Sea State	Baro Pressure	Air Temp		Sea Surface Temp	Humidity (%)	Prob of Rain (%)	Sea State	Wave Ht (m)
							Max	Min					
04-08-24	0001	15	SSW	1.9	4	1006	30	27	28	92%	49% (0.5 mm)	0	0
	0600	12	SSW	1.7	4	1005			28	94%	61% (0.6 mm)	1	0 - 0.1
	1200	9	SW	1.7	4	1007			29	83%	89% (1.6 mm)	2	0.1 - 0.5
	1800	10	SSW	1.6	4	1004			29	88%	41% (0.5 mm)	3	0.5 - 1.25
05-08-24	0001	11	SSW	1.4	4	1006	30	27	28	91%	48% (0.5 mm)	4	1.25 - 2.5
	0600	6	SW	1.2	3	1006			28	93%	56% (0.6 mm)	5	2.5 - 4.0
	1200	9	SW	1.2	3	1007			29	86%	87% (0.9 mm)	6	4.0 - 6.0
	1800	8	SSW	1.2	3	1004			29	89%	45% (0.5 mm)	7	6.0 - 9.0
06-08-24	0001	12	SSW	1.2	3	1005	30	27	29	92%	53% (0.5 mm)	8	9.0 - 14.0
	0600	9	SW	1.2	3	1004			28	94%	65% (0.6 mm)	9	Over 14.0
	1200	13	SSW	1.3	4	1005			29	81%	54% (0.5 mm)		
	1800	12	SSW	1.3	4	1003			29	88%	46% (0.5 mm)		
07-08-24	0001	14	S	1.3	4	1004	30	27	29	93%	58% (0.6 mm)		
	0600	12	S	1.3	4	1003			28	95%	67% (0.7 mm)		
	1200	10	SSW	1.3	4	1005			29	81%	56% (0.6 mm)		
	1800	11	SSW	1.3	4	1003			29	88%	43% (0.4 mm)		

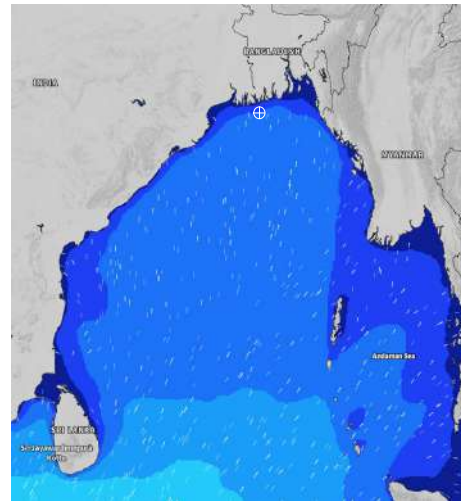
**04 Aug 24 Sun (Probability 98%)**



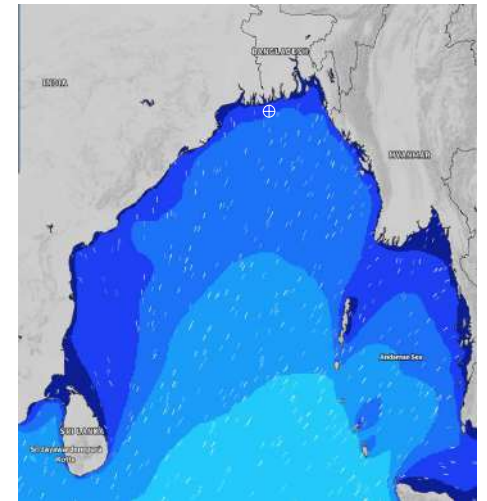
**05 Aug 24 Mon (Probability 95%)**



**06 Aug 24 Tue (Probability 90%)**



**07 Aug 24 Wed (Probability 80%)**



Significant wave height (m)

**MARINE WEATHER FORECAST- 10 NM SOUTH OF MONGLA FAIRWAY (Lat 21° 16'N, Long 089° 34'E)**

**DATE : 04 to 11 Aug 2024**

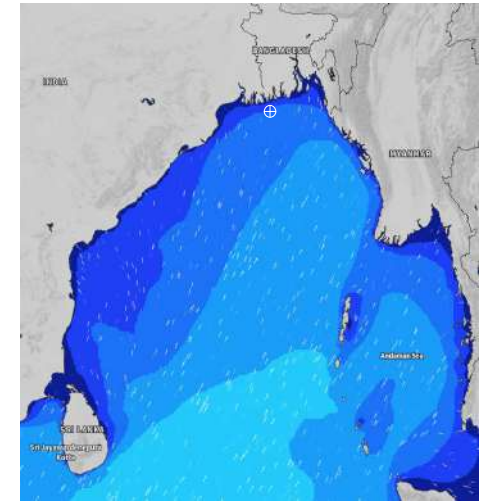
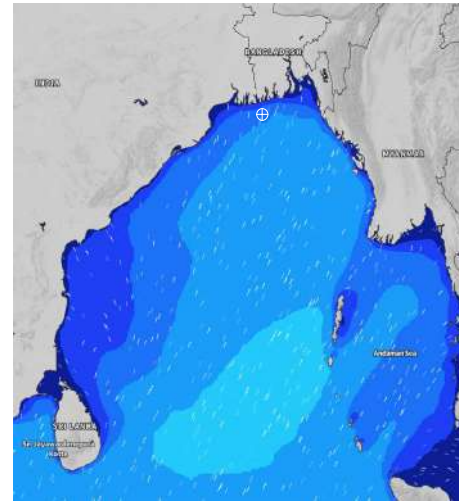
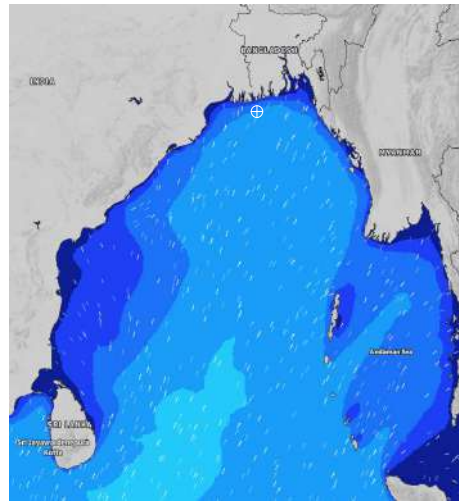
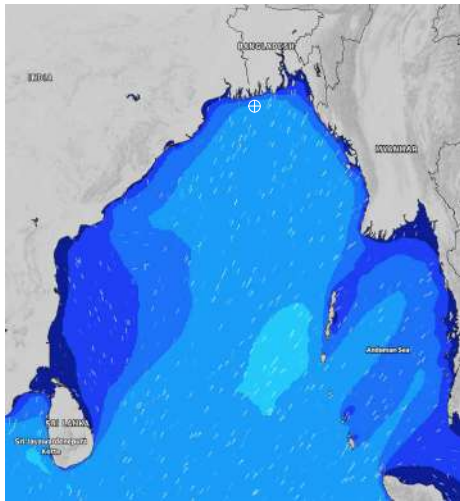
Date	Time	Max Wind Spd (kts)	Wind Direction	Wave Ht (m)	Sea State	Baro Pressure	Air Temp		Sea Surface Temp	Humidity (%)	Prob of Rain (%)	Sea State	Wave Ht (m)
							Max	Min					
08-08-24	0001	17	S	1.6	4	1005	30	27	28	89%	44% (0.5 mm)	0	0
	0600	15	S	1.7	4	1004			28	92%	65% (0.6 mm)	1	0 - 0.1
	1200	15	SSW	1.8	4	1005			29	79%	56% (0.5 mm)	2	0.1 - 0.5
	1800	14	SSW	1.7	4	1003			29	88%	37% (0.3 mm)	3	0.5 - 1.25
09-08-24	0001	14	SSW	1.7	4	1005	30	27	29	88%	75% (0.7 mm)	4	1.25 - 2.5
	0600	11	SW	1.6	4	1004			28	93%	66% (0.7 mm)	5	2.5 - 4.0
	1200	11	SSW	1.6	4	1005			29	81%	65% (0.6 mm)	6	4.0 - 6.0
	1800	14	SSW	1.7	4	1003			29	89%	38% (0.4 mm)	7	6.0 - 9.0
10-08-24	0001	12	SSW	1.6	4	1004	30	27	29	91%	57% (0.6 mm)	8	9.0 - 14.0
	0600	10	SSW	1.5	4	1003			28	93%	64% (0.6 mm)	9	Over 14.0
	1200	10	SSW	1.5	4	1004			29	84%	55% (0.6 mm)		
	1800	10	SSW	1.4	4	1002			29	88%	36% (0.5 mm)		
11-08-24	0001	7	SW	1.3	4	1003	30	27	29	90%	52% (0.5 mm)		
	0600	8	SSW	1.3	4	1002			28	93%	65% (0.6 mm)		
	1200	9	SW	1.3	4	1003			29	82%	54% (0.6 mm)		
	1800	10	SSW	1.3	4	1002			29	89%	36% (0.3 mm)		

**08 Aug 24 Thu (Probability 70%)**

**09 Aug 24 Fri (Probability 60%)**

**10 Aug 24 Sat (Probability 50%)**

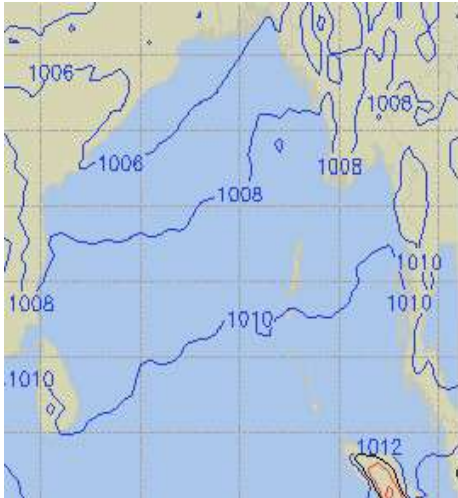
**11 Aug 24 Sun (Probability 50%)**



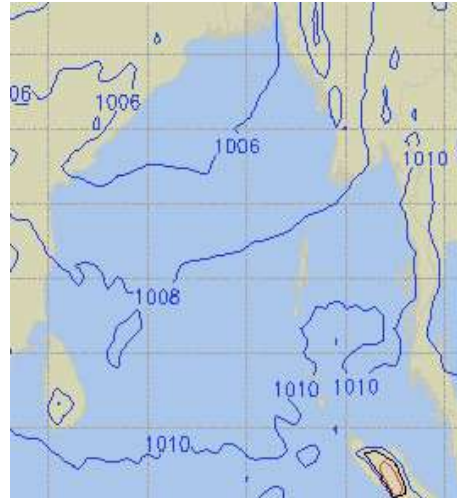
Significant wave height (m)

## PREDICTED SURFACE PRESSURE FORECAST (04 Aug to 10 Aug 2024)

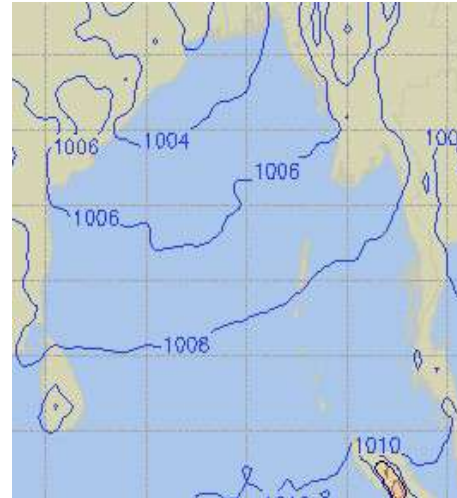
**04 Aug 24 Sun (Probability 98%)**



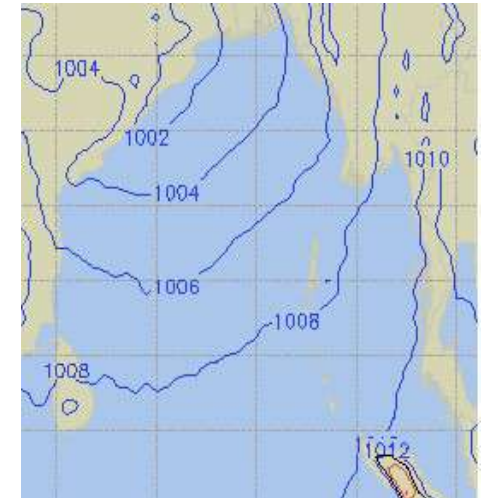
**05 Aug 24 Mon (Probability 95%)**



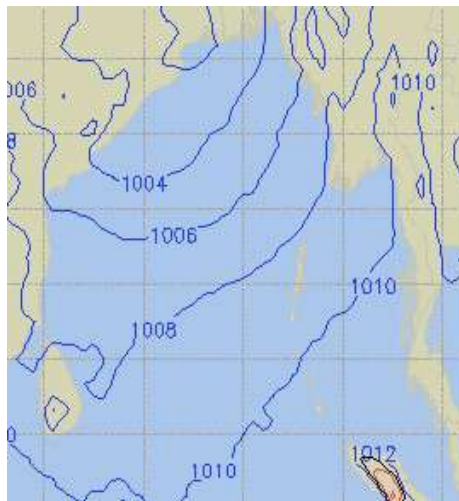
**06 Aug 24 Tue (Probability 90%)**



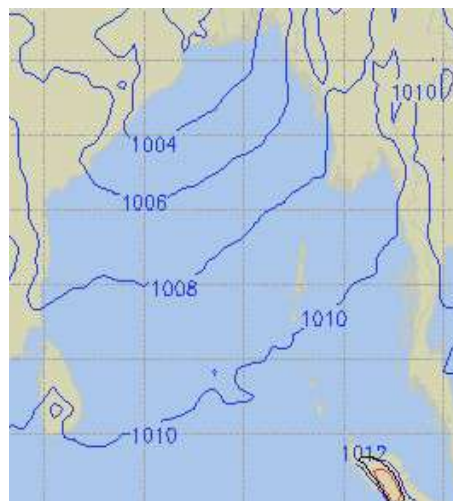
**07 Aug 24 Wed (Probability 80%)**



**08 Thu 24 Thu (Probability 70%)**



**09 Thu 24 Fri (Probability 60%)**



**10 Thu 24 Sat (Probability 50%)**

