

**MARINE WEATHER FORECAST- NEAR AUTHORITY BUOY (Lat 22° 12'N, Long 091° 38'E)**

**DATE : 04 to 11 July 2024**

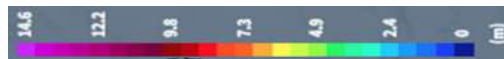
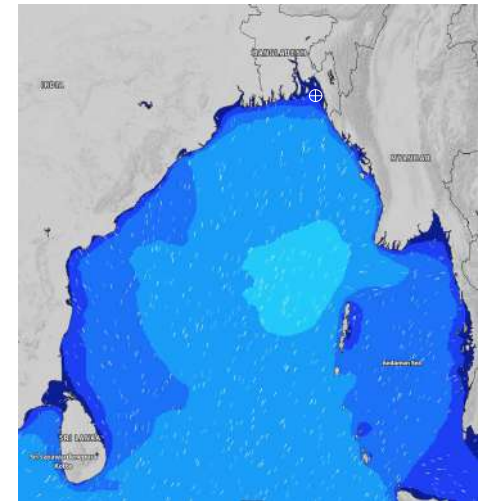
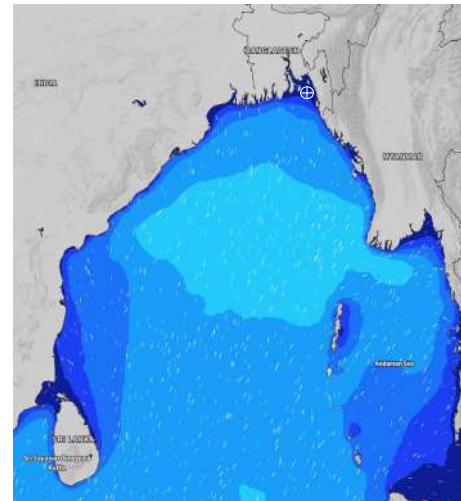
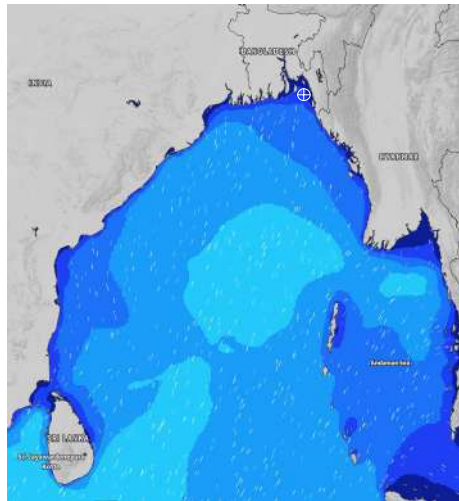
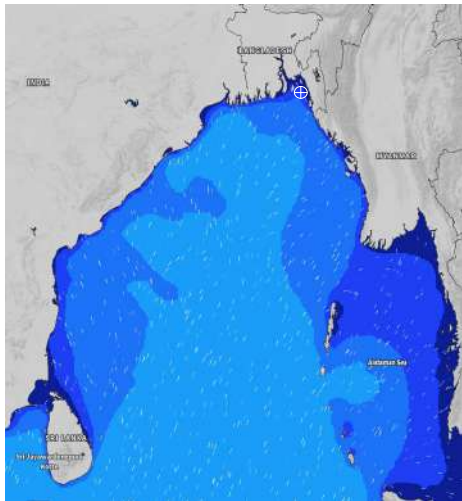
Date	Time	Max Wind Spd (kts)	Wind Direction	Wave Ht (m)	Sea State	Baro Pressure	Air Temp		Sea Surface Temp	Humidity (%)	Prb of Rain (%)	Sea State	Wave Ht (m)
							Max	Min					
04-07-24	0001	23	SSE	0.4	2	1005	28	26	27	92%	32% (0.2 mm)	0	0
	0600	24	SSE	0.4	2	1005			27	91%	74% (0.0 mm)	1	0 - 0.1
	1200	24	S	0.5	2	1005			29	93%	98% (0.7 mm)	2	0.1 - 0.5
	1800	23	SSE	0.4	2	1004			29	95%	88% (0.1 mm)	3	0.5 - 1.25
05-07-24	0001	22	SSE	0.5	2	1005	29	26	27	92%	83% (0.5 mm)	4	1.25 - 2.5
	0600	21	SSE	0.4	2	1004			27	93%	97% (0.1 mm)	5	2.5 - 4.0
	1200	20	S	0.4	2	1004			28	89%	91% (0.3 mm)	6	4.0 - 6.0
	1800	18	S	0.4	2	1002			28	94%	79% (0.7 mm)	7	6.0 - 9.0
06-07-24	0001	14	SSE	0.3	2	1003	29	26	27	92%	83% (0.4 mm)	8	9.0 - 14.0
	0600	15	SSE	0.3	2	1002			27	94%	97% (0.0 mm)	9	Over 14.0
	1200	13	SSW	0.3	2	1002			28	93%	95% (0.1 mm)		
	1800	11	S	0.2	2	1001			29	96%	90% (0.1 mm)		
07-07-24	0001	12	SSE	0.3	2	1002	30	26	28	92%	83% (0.0 mm)		
	0600	10	SE	0.2	2	1002			27	94%	97% (0.1 mm)		
	1200	12	SSE	0.2	2	1003			28	91%	95% (0.1 mm)		
	1800	13	SSW	0.3	2	1001			29	90%	90% (0.2 mm)		

**04 July 24 Thu (Probability 98%)**

**05 July 24 Fri (Probability 95%)**

**06 July 24 Sat (Probability 90%)**

**07 July 24 Sun (Probability 80%)**



Significant wave height (m)

**MARINE WEATHER FORECAST- NEAR AUTHORITY BUOY (Lat 22° 12'N, Long 091° 38'E)**

**DATE : 04 to 11 July 2024**

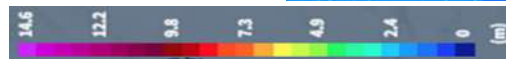
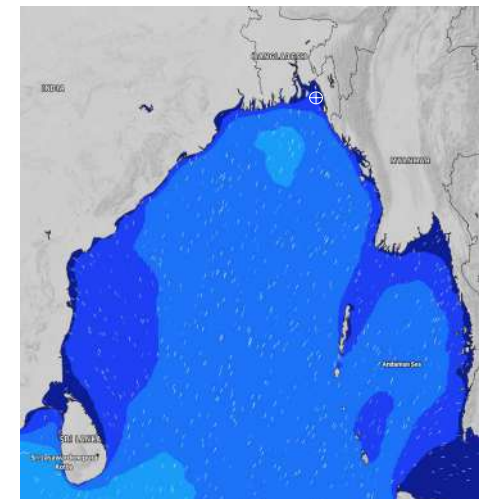
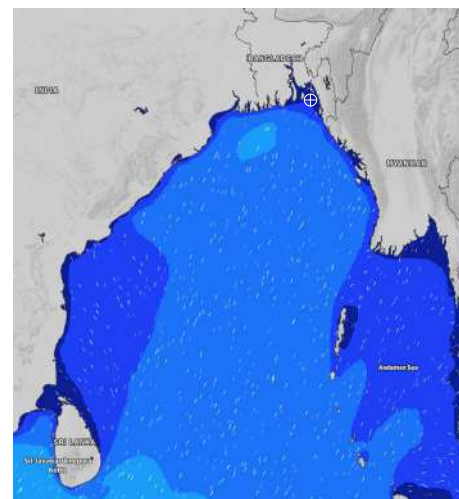
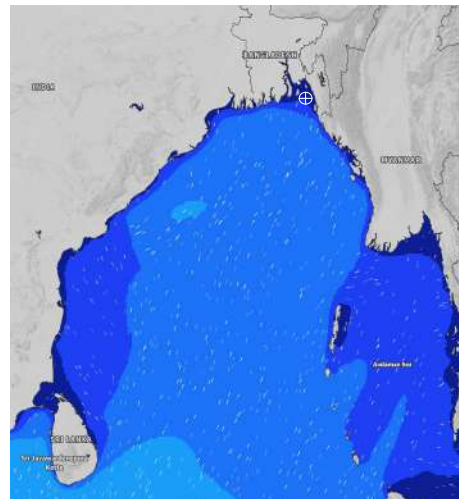
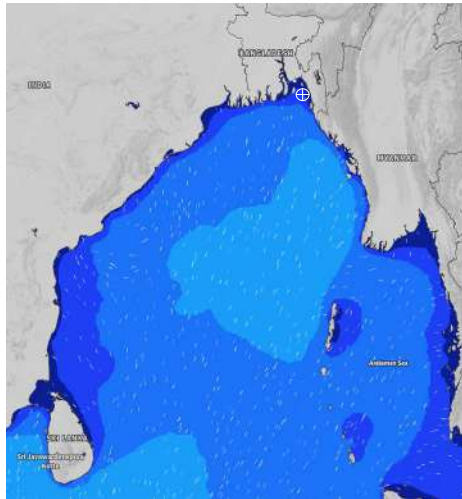
Date	Time	Max Wind Spd (kts)	Wind Direction	Wave Ht (m)	Sea State	Baro Pressure	Air Temp		Sea Surface Temp	Humidity (%)	Prob of Rain (%)	Sea State	Wave Ht (m)
							Max	Min					
08-07-24	0001	21	SSE	0.3	2	1003	30	27	27	94%	60% (0.5 mm)	0	0
	0600	20	SSE	0.2	2	1003			27	96%	52% (0.6 mm)	1	0 - 0.1
	1200	16	SE	0.4	2	1005			30	96%	34% (0.4 mm)	2	0.1 - 0.5
	1800	22	S	0.4	2	1004			29	94%	33% (0.3 mm)	3	0.5 - 1.25
09-07-24	0001	23	SSE	0.3	2	1005	30	26	27	90%	75% (0.5 mm)	4	1.25 - 2.5
	0600	21	SSE	0.3	2	1006			27	92%	56% (0.4 mm)	5	2.5 - 4.0
	1200	22	SE	0.3	2	1006			28	89%	35% (0.2 mm)	6	4.0 - 6.0
	1800	20	S	0.3	2	1005			28	90%	24% (0.5 mm)	7	6.0 - 9.0
10-07-24	0001	18	SE	0.3	2	1006	31	27	28	90%	62% (0.3 mm)	8	9.0 - 14.0
	0600	15	SSE	0.3	2	1006			27	92%	55% (0.5 mm)	9	Over 14.0
	1200	16	SSE	0.3	2	1007			27	89%	34% (0.7 mm)		
	1800	18	SSE	0.3	2	1006			27	90%	36% (0.2 mm)		
11-07-24	0001	21	SSE	0.3	2	1007	31	27	27	90%	62% (0.6 mm)		
	0600	15	SSE	0.3	2	1006			27	92%	55% (0.4 mm)		
	1200	18	SE	0.2	2	1005			29	89%	34% (0.2 mm)		
	1800	16	S	0.2	2	1003			29	90%	33% (0.2 mm)		

**08 July 24 Mon (Probability 70%)**

**09 July 24 Tue (Probability 60%)**

**10 July 24 Wed (Probability 50%)**

**11 July 24 Thu (Probability 50%)**



Significant wave height (m)

**MARINE WEATHER FORECAST- 20 NM WEST OF ELEPHANT POINT (Lat 21° 10'N, Long 091° 42'E)**

**DATE : 04 to 11 July 2024**

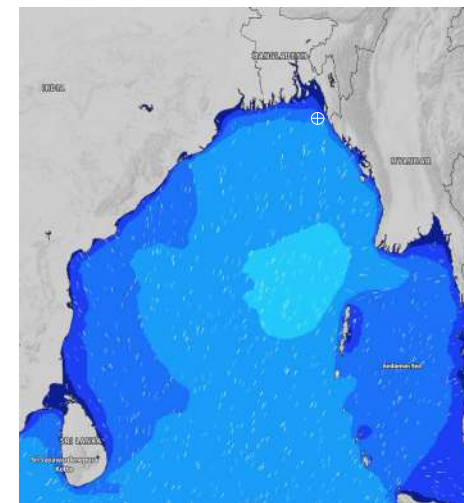
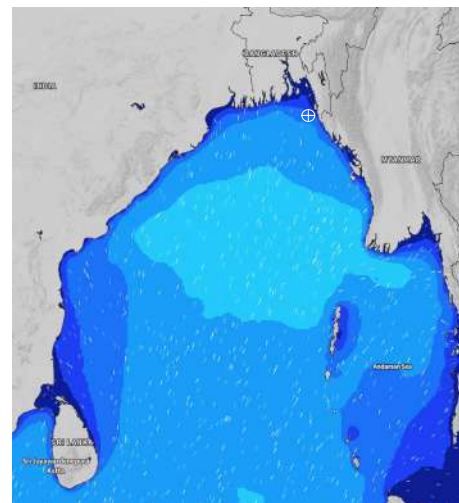
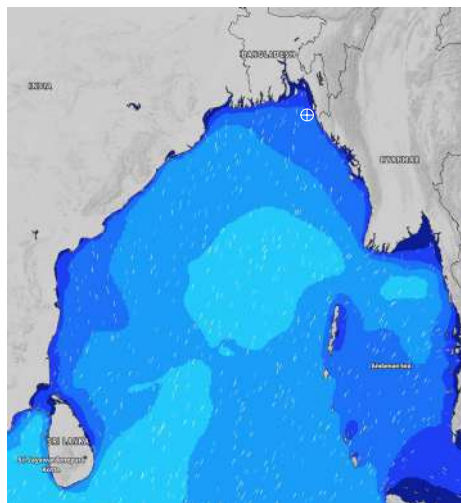
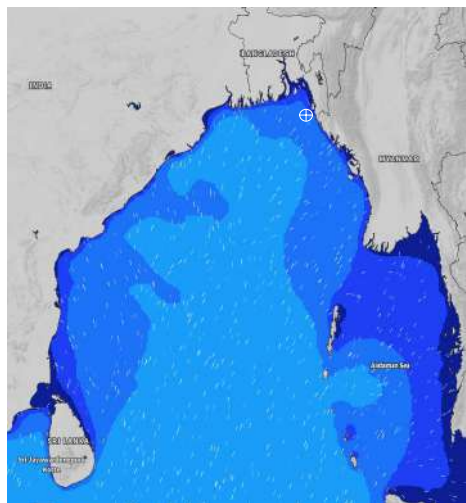
Date	Time	Max Wind Spd (kts)	Wind Direction	Wave Ht (m)	Sea State	Baro Pressure	Air Temp		Sea Surface Temp	Humidity (%)	Prob of Rain (%)	Sea State	Wave Ht (m)
							Max	Min					
04-07-24	0001	14	SSE	1.4	4	1005	28	26	28	92%	62% (0.9 mm)	0	0
	0600	20	SSE	1.5	4	1004			27	93%	94% (0.0 mm)	1	0 - 0.1
	1200	23	SSE	1.7	4	1006			28	95%	93% (1.2 mm)	2	0.1 - 0.5
	1800	20	S	1.6	4	1004			28	94%	95% (1.3 mm)	3	0.5 - 1.25
05-07-24	0001	17	S	1.4	4	1005	28	26	27	96%	96% (2.4 mm)	4	1.25 - 2.5
	0600	16	SSE	1.5	4	1004			28	95%	90% (2.2 mm)	5	2.5 - 4.0
	1200	19	SSE	1.5	4	1004			28	94%	92% (2.6 mm)	6	4.0 - 6.0
	1800	12	S	1.3	4	1002			28	92%	85% (2.3 mm)	7	6.0 - 9.0
06-07-24	0001	10	S	1.3	4	1003	28	26	28	93%	81% (2.5 mm)	8	9.0 - 14.0
	0600	12	SSE	1.5	4	1002			28	90%	92% (2.4 mm)	9	Over 14.0
	1200	12	SSE	1.5	4	1003			28	92%	93% (2.2 mm)		
	1800	10	S	1.4	4	1001			28	95%	95% (2.0 mm)		
07-07-24	0001	10	ESE	1.4	4	1002	29	26	27	94%	81% (2.1 mm)		
	0600	15	SE	1.5	4	1002			28	93%	95% (2.2 mm)		
	1200	13	SE	1.6	4	1003			28	92%	96% (2.3 mm)		
	1800	15	SE	1.6	4	1001			28	93%	93% (2.5 mm)		

**04 July 24 Thu (Probability 98%)**

**05 July 24 Fri (Probability 95%)**

**06 July 24 Sat (Probability 90%)**

**07 July 24 Sun (Probability 80%)**



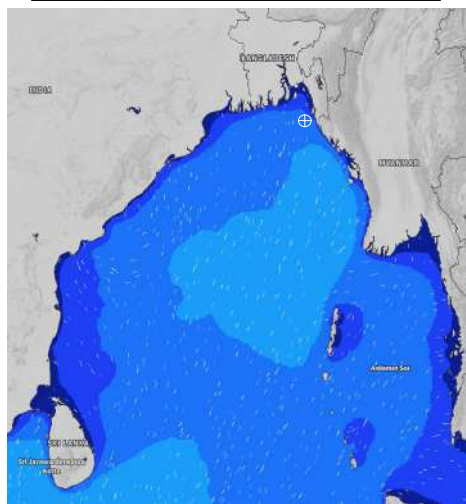
Significant wave height (m)

**MARINE WEATHER FORECAST- 20 NM WEST OF ELEPHANT POINT (Lat 21° 10'N, Long 091° 42'E)**

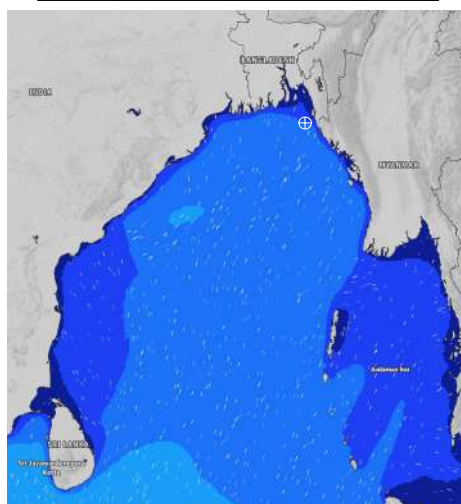
**DATE : 04 to 11 July 2024**

Date	Time	Max Wind Spd (kts)	Wind Direction	Wave Ht (m)	Sea State	Baro Pressure	Air Temp		Sea Surface Temp	Humidity (%)	Prob of Rain (%)	Sea State	Wave Ht (m)
							Max	Min					
08-07-24	0001	25	SSE	2.2	4	1002	30	27	28	93%	53% (0.5 mm)	0	0
	0600	23	SSE	2.1	4	1002			28	95%	32% (0.4 mm)	1	0 - 0.1
	1200	24	SE	2.2	4	1003			28	97%	64% (0.2 mm)	2	0.1 - 0.5
	1800	23	SSE	2.4	4	1002			29	95%	55% (0.3 mm)	3	0.5 - 1.25
09-07-24	0001	20	SSE	2.2	4	1004	31	27	28	95%	63% (0.1 mm)	4	1.25 - 2.5
	0600	19	SE	1.3	4	1004			28	96%	56% (0.2 mm)	5	2.5 - 4.0
	1200	21	SSE	2.2	4	1006			28	94%	52% (0.5 mm)	6	4.0 - 6.0
	1800	18	SE	1.5	4	1006			28	94%	34% (0.2 mm)	7	6.0 - 9.0
10-07-24	0001	16	SE	1.1	4	1007	31	27	28	90%	61% (0.3 mm)	8	9.0 - 14.0
	0600	17	SE	1.2	4	1007			27	93%	52% (0.2 mm)	9	Over 14.0
	1200	15	SSE	1.3	4	1008			27	90%	53% (0.4 mm)		
	1800	16	SE	1.5	4	1007			27	91%	35% (0.2 mm)		
11-07-24	0001	15	SSE	1.2	4	1002	30	27	28	90%	63% (0.3 mm)		
	0600	13	SE	1.1	4	1001			28	93%	55% (0.5 mm)		
	1200	21	SSE	2.3	4	1002			28	90%	54% (0.4 mm)		
	1800	20	SSE	1.2	4	1000			29	91%	33% (0.2 mm)		

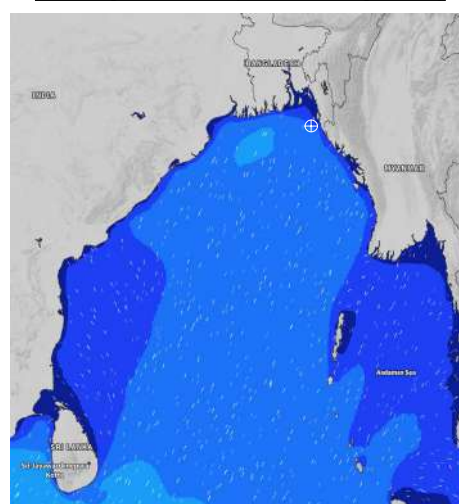
**08 July 24 Mon (Probability 70%)**



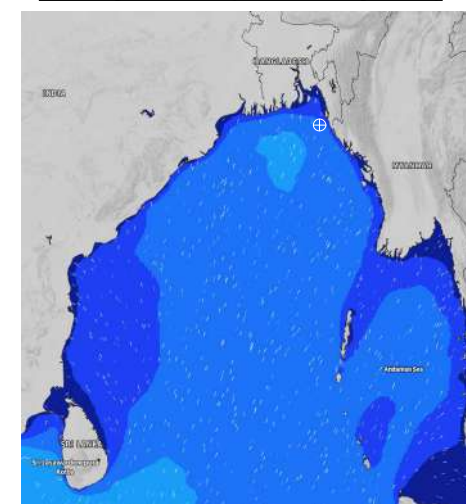
**09 July 24 Tue (Probability 60%)**



**10 July 24 Wed (Probability 50%)**



**11 July 24 Thu (Probability 50%)**



Significant wave height (m)

**MARINE WEATHER FORECAST- 15 NM WEST OF ST. MARTIN'S LIGHT HOUSE (Lat 20° 37'N, Long 092° 03'E)**

**DATE : 04 to 11 July 2024**

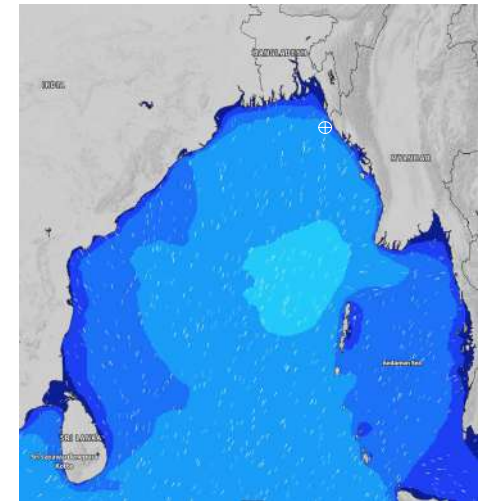
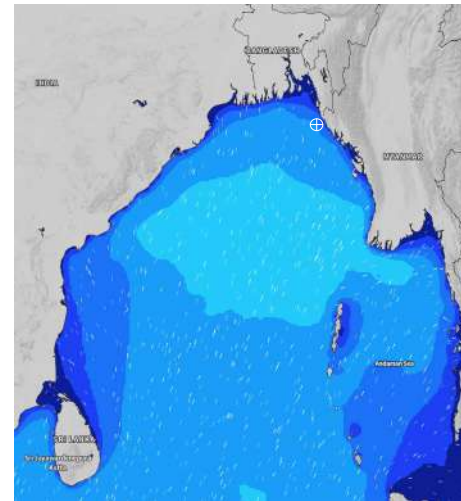
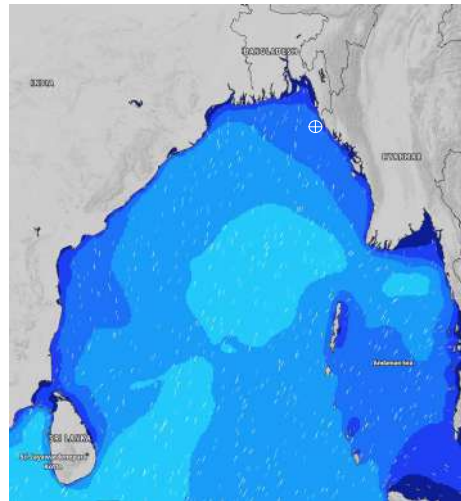
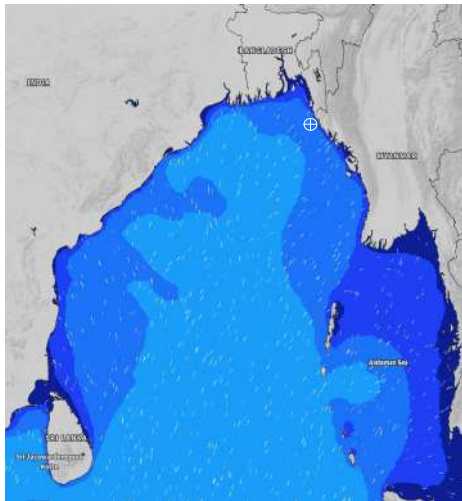
Date	Time	Max Wind Spd (kts)	Wind Direction	Wave Ht (m)	Sea State	Baro Pressure	Air Temp		Sea Surface Temp	Humidity (%)	Prob of Rain(%)	Sea State	Wave Ht (m)
							Max	Min					
04-07-24	0001	12	SSW	1.7	4	1006	28	26	28	92%	93% (1.3 mm)	0	0
	0600	14	SSE	1.3	4	1005			28	92%	92% (0.6 mm)	1	0 - 0.1
	1200	18	SSE	1.7	4	1007			29	93%	95% (1.0 mm)	2	0.1 - 0.5
	1800	18	S	1.7	4	1005			28	93%	94% (1.3 mm)	3	0.5 - 1.25
05-07-24	0001	15	S	1.7	4	1007	28	26	28	91%	61% (0.5 mm)	4	1.25 - 2.5
	0600	12	SSE	1.6	4	1004			28	91%	52% (0.4 mm)	5	2.5 - 4.0
	1200	14	SSE	1.6	4	1005			29	95%	53% (0.2 mm)	6	4.0 - 6.0
	1800	10	SSW	1.5	4	1002			29	94%	92% (2.3 mm)	7	6.0 - 9.0
06-07-24	0001	17	SSW	1.7	4	1004	28	26	28	91%	91% (2.6 mm)	8	9.0 - 14.0
	0600	18	SSW	1.9	4	1002			28	92%	82% (1.1 mm)	9	Over 14.0
	1200	18	S	1.9	4	1003			28	95%	93% (1.0 mm)		
	1800	16	SSW	1.9	4	1001			28	93%	65% (0.2 mm)		
07-07-24	0001	18	SW	1.9	4	1003	29	26	27	92%	92% (2.4 mm)		
	0600	13	SSW	1.9	4	1002			26	93%	83% (1.3 mm)		
	1200	10	SSE	2.0	4	1003			26	95%	92% (1.0 mm)		
	1800	12	SSW	1.9	4	1002			27	92%	63% (0.3 mm)		

**04 July 24 Thu (Probability 98%)**

**05 July 24 Fri (Probability 95%)**

**06 July 24 Sat (Probability 90%)**

**07 July 24 Sun (Probability 80%)**



Significant wave height (m)

# MARINE WEATHER FORECAST- 15 NM WEST OF ST. MARTIN'S LIGHT HOUSE (Lat 20° 37'N, Long 092° 03' E)

**DATE : 04 to 11 July 2024**

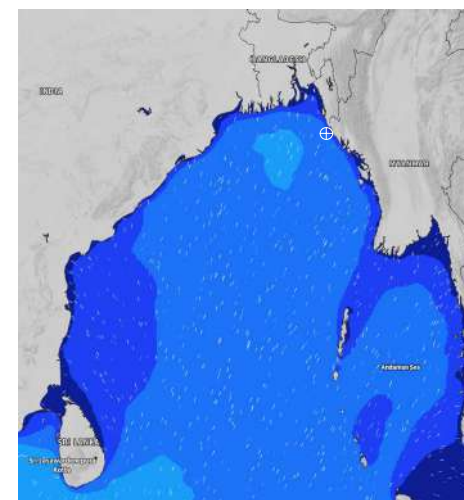
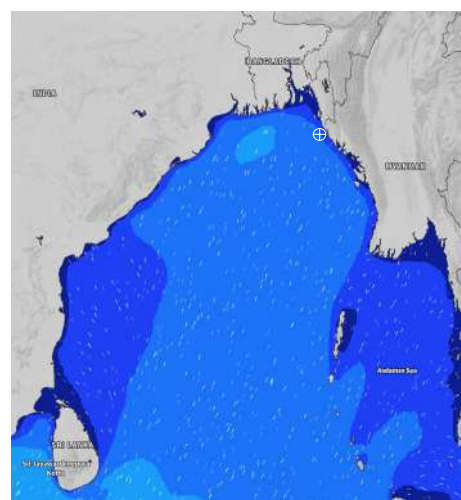
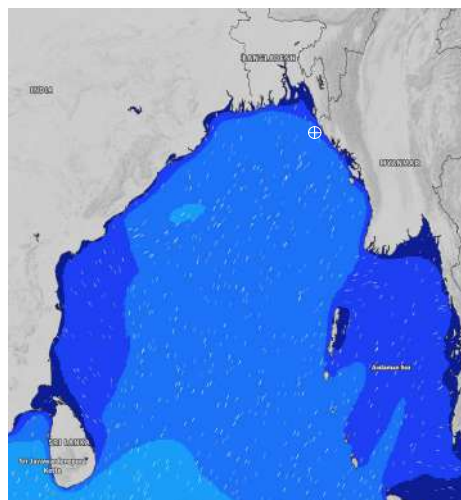
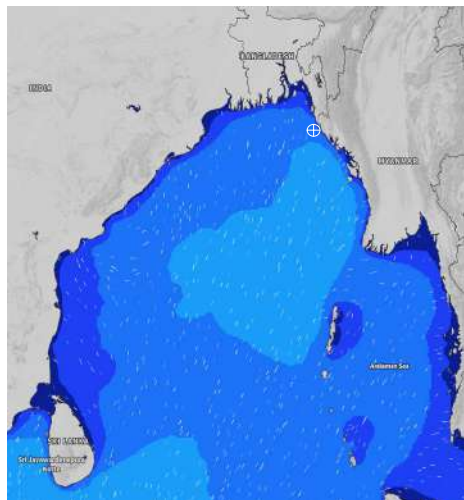
Date	Time	Max Wind Spd (kts)	Wind Direction	Wave Ht (m)	Sea State	Baro Pressure	Air Temp		Sea Surface Temp	Humidity (%)	Prob of Rain (%)	Sea State	Wave Ht (m)
							Max	Min					
08-07-24	0001	27	SSE	2.4	4	1002	30	27	28	95%	84% (1.1 mm)	0	0
	0600	23	SE	2.4	4	1003			28	93%	75% (1.2 mm)	1	0 - 0.1
	1200	26	SSE	2.2	4	1004			28	96%	66% (1.3 mm)	2	0.1 - 0.5
	1800	25	SSE	2.3	4	1002			28	92%	65% (1.4 mm)	3	0.5 - 1.25
09-07-24	0001	21	SSE	2.6	5	1003	30	27	29	94%	73% (0.2 mm)	4	1.25 - 2.5
	0600	18	SSE	2.5	5	1005			28	91%	75% (0.0 mm)	5	2.5 - 4.0
	1200	20	SSE	2.4	4	1001			28	92%	44% (0.2 mm)	6	4.0 - 6.0
	1800	16	SSE	2.2	4	1002			28	95%	35% (0.3 mm)	7	6.0 - 9.0
10-07-24	0001	12	SSE	2.3	4	1003	31	26	28	94%	62% (0.2 mm)	8	9.0 - 14.0
	0600	14	SSE	2.2	4	1002			28	94%	74% (0.1 mm)	9	Over 14.0
	1200	13	SSE	2.0	4	1003			27	95%	46% (0.2 mm)		
	1800	15	SSE	2.4	4	1006			27	95%	35% (0.1 mm)		
11-07-24	0001	16	SE	2.2	4	1005	31	26	28	94%	64% (0.3 mm)		
	0600	14	ESE	2.2	4	1002			27	94%	75% (0.2 mm)		
	1200	25	ESE	2.3	4	1004			28	95%	43% (0.1 mm)		
	1800	21	SSE	2.4	4	1001			28	95%	34% (0.2 mm)		

**08 July 24 Mon (Probability 70%)**

**09 July 24 Tue (Probability 60%)**

**10 July 24 Wed (Probability 50%)**

**11 July 24 Thu (Probability 50%)**



Significant wave height (m)

**MARINE WEATHER FORECAST- 40 NM ESE OF PAYRA FAIRWAY (Lat 21° 07' N, Long 090° 45' E)**

**DATE : 04 to 11 July 2024**

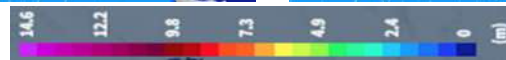
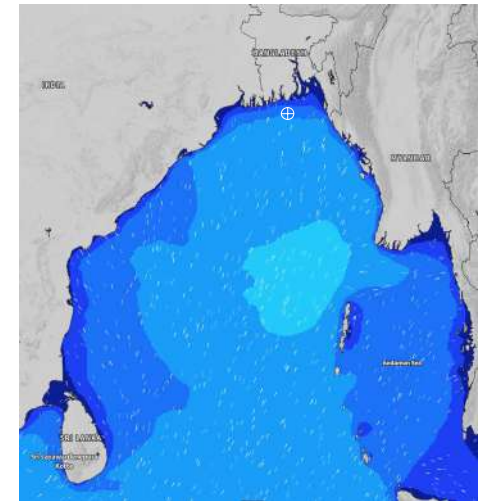
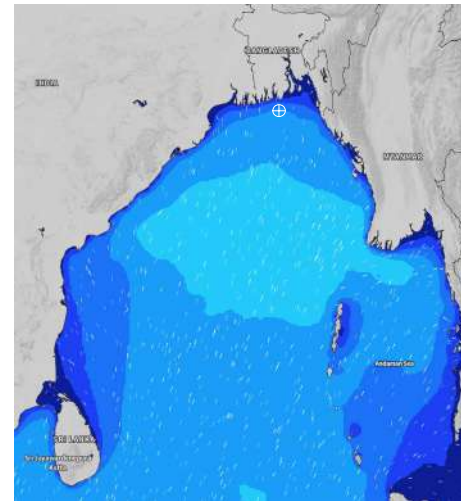
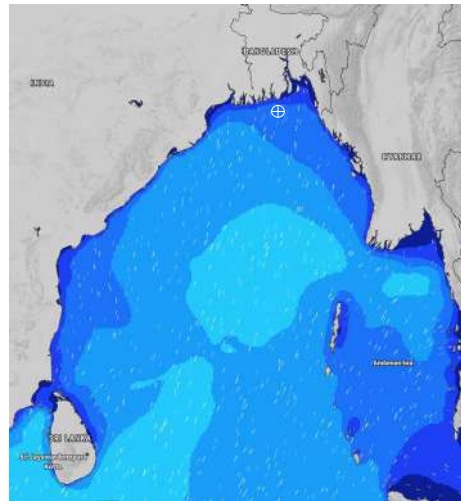
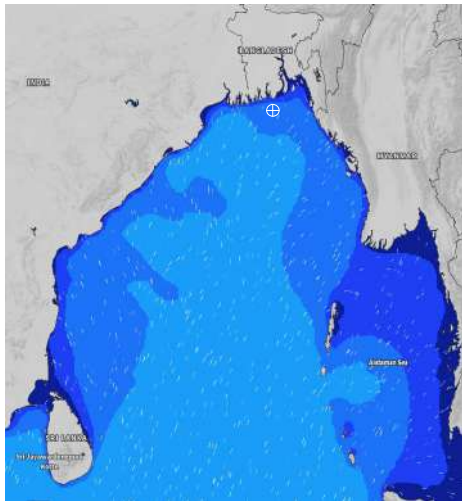
Date	Time	Max Wind Spd (kts)	Wind Direction	Wave Ht (m)	Sea State	Baro Pressure	Air Temp		Sea Surface Temp	Humidity (%)	Prob of Rain (%)	Sea State	Wave Ht (m)
							Max	Min					
04-07-24	0001	17	SSW	1.8	4	1004	28	27	28	92%	38% (0.2 mm)	0	0
	0600	20	S	1.9	4	1004			28	90%	45% (0.0 mm)	1	0 - 0.1
	1200	18	S	1.8	4	1005			28	91%	96% (4.3 mm)	2	0.1 - 0.5
	1800	15	SW	1.7	4	1004			28	90%	45% (0.5 mm)	3	0.5 - 1.25
05-07-24	0001	17	SSW	1.9	4	1005	29	27	28	88%	66% (1.4 mm)	4	1.25 - 2.5
	0600	16	S	1.8	4	1004			29	93%	82% (1.6 mm)	5	2.5 - 4.0
	1200	15	SSW	1.7	4	1004			29	92%	93% (1.2 mm)	6	4.0 - 6.0
	1800	14	SW	1.7	4	1002			29	91%	55% (0.0 mm)	7	6.0 - 9.0
06-07-24	0001	10	SSW	1.9	4	1003	29	27	29	90%	84% (1.1 mm)	8	9.0 - 14.0
	0600	13	S	1.8	4	1002			29	94%	96% (1.4 mm)	9	Over 14.0
	1200	12	S	1.9	4	1002			29	93%	62% (0.2 mm)		
	1800	10	S	1.9	4	1001			29	90%	55% (0.1 mm)		
07-07-24	0001	10	SSE	1.9	4	1002	29	27	29	91%	84% (1.2 mm)		
	0600	11	SSE	2.0	4	1001			29	93%	91% (1.0 mm)		
	1200	12	SW	2.0	4	1003			28	94%	62% (0.3 mm)		
	1800	13	SW	2.1	4	1001			27	92%	56% (0.2 mm)		

**04 July 24 Thu (Probability 98%)**

**05 July 24 Fri (Probability 95%)**

**06 July 24 Sat (Probability 90%)**

**07 July 24 Sun (Probability 80%)**



Significant wave height (m)

# MARINE WEATHER FORECAST- 40 NM ESE OF PAYRA FAIRWAY (Lat 21° 07' N, Long 090° 45' E)

**DATE : 04 to 11 July 2024**

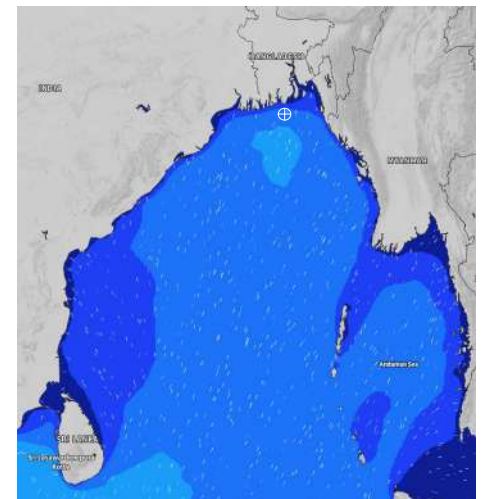
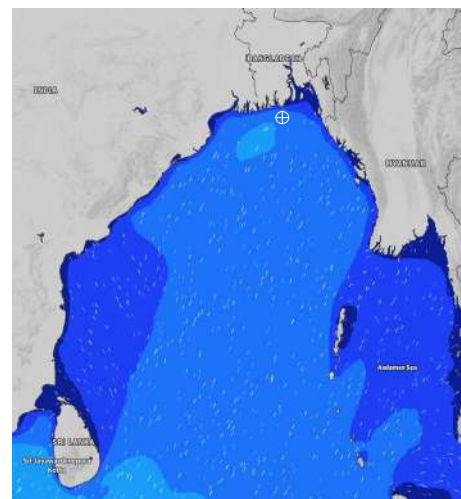
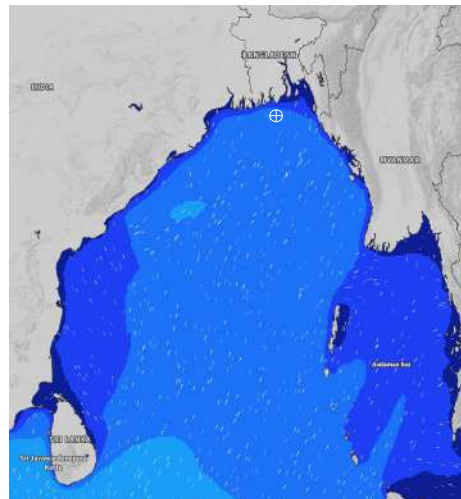
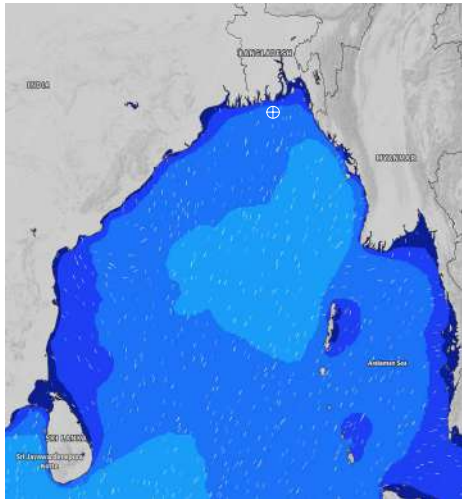
Date	Time	Max Wind Spd (kts)	Wind Direction	Wave Ht (m)	Sea Stae	Baro Pressure	Air Temp		Sea Surface Temp	Humidity (%)	Prob of Rain (%)	Sea State	Wave Ht (m)
							Max	Min					
08-07-24	0001	22	ESE	2.1	4	1001	30	28	28	93%	90% (1.0 mm)	0	0
	0600	25	SE	2.2	4	1001			28	95%	89% (0.5 mm)	1	0 - 0.1
	1200	23	SSE	2.3	4	1002			28	92%	42% (0.2 mm)	2	0.1 - 0.5
	1800	21	SE	2.2	4	1000			28	93%	23% (0.3 mm)	3	0.5 - 1.25
09-07-24	0001	22	SSE	2.5	5	1002	30	28	28	92%	62% (0.5 mm)	4	1.25 - 2.5
	0600	23	SSE	2.1	4	1003			29	94%	44% (0.4 mm)	5	2.5 - 4.0
	1200	20	SSE	2.2	4	1002			28	91%	41% (0.2 mm)	6	4.0 - 6.0
	1800	20	SSE	2.3	4	1004			29	92%	22% (0.1 mm)	7	6.0 - 9.0
10-07-24	0001	22	SE	2.5	5	1005	30	28	29	83%	63% (0.2 mm)	8	9.0 - 14.0
	0600	16	SSE	2.2	4	1006			29	92%	42% (0.3 mm)	9	Over 14.0
	1200	18	SSE	2.3	4	1002			28	93%	41% (0.4 mm)		
	1800	17	SE	2.5	5	1004			28	95%	22% (0.1 mm)		
11-07-24	0001	16	SSE	1.4	4	1003	30	27	29	82%	61% (0.6 mm)		
	0600	18	SE	2.2	4	1002			28	94%	44% (0.4 mm)		
	1200	17	ESE	2.3	4	1004			29	91%	43% (0.4 mm)		
	1800	16	SSE	2.5	5	1002			29	90%	24% (0.1 mm)		

**08 July 24 Mon (Probability 70%)**

**09 July 24 Tue (Probability 60%)**

**10 July 24 Wed (Probability 50%)**

**11 July 24 Thu (Probability 50%)**



Significant wave height (m)



**MARINE WEATHER FORECAST- 10 NM SOUTH OF MONGLA FAIRWAY (Lat 21° 16'N, Long 089° 34'E)**

**DATE : 04 to 11 July 2024**

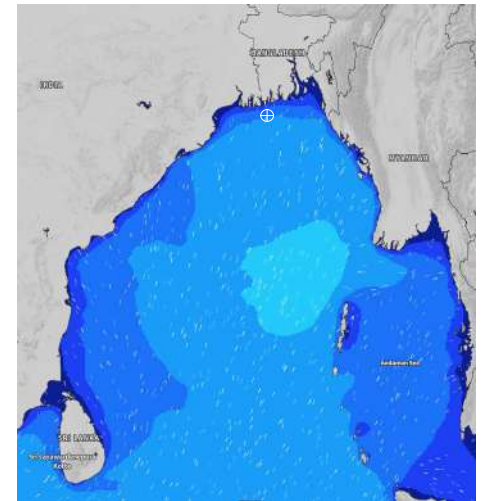
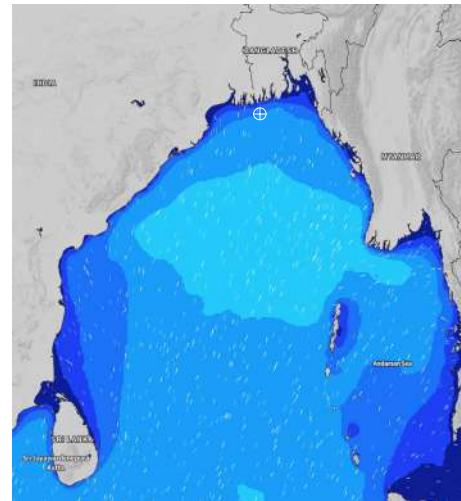
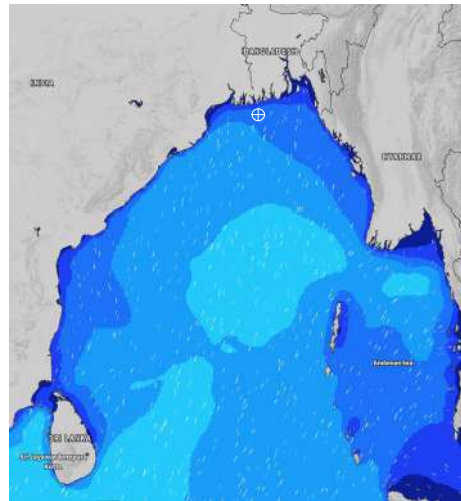
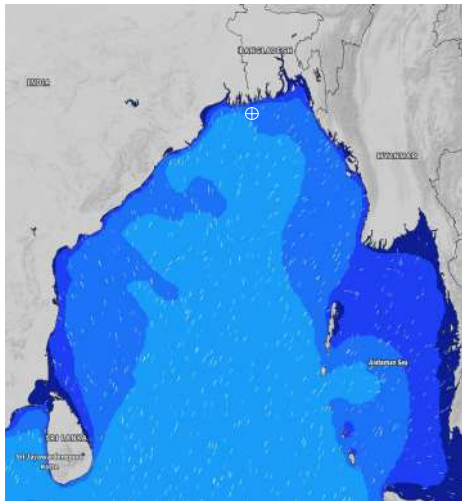
Date	Time	Max Wind Spd (kts)	Wind Direction	Wave Ht (m)	Sea State	Baro Pressure	Air Temp		Sea Surface Temp	Humidity (%)	Prob of Rain (%)	Sea State	Wave Ht (m)
							Max	Min					
04-07-24	0001	19	SSW	2.0	4	1003	29	27	29	91%	25% (0.2 mm)	0	0
	0600	18	SSW	1.8	4	1003			29	93%	23% (0.4 mm)	1	0 - 0.1
	1200	18	SW	1.7	4	1004			30	92%	46% (0.3 mm)	2	0.1 - 0.5
	1800	18	SW	2.1	4	1003			28	90%	42% (0.5 mm)	3	0.5 - 1.25
05-07-24	0001	20	SSW	2.1	4	1003	29	27	29	92%	44% (0.4 mm)	4	1.25 - 2.5
	0600	17	SSW	1.7	4	1003			29	91%	71% (0.6 mm)	5	2.5 - 4.0
	1200	17	SW	1.6	4	1004			29	83%	73% (0.2 mm)	6	4.0 - 6.0
	1800	20	SW	1.9	4	1002			29	92%	45% (0.4 mm)	7	6.0 - 9.0
06-07-24	0001	29	SSW	1.9	4	1002	30	27	29	95%	84% (2.2 mm)	8	9.0 - 14.0
	0600	10	SSW	2.0	4	1001			29	94%	92% (2.5 mm)	9	Over 14.0
	1200	10	SW	1.9	4	1003			29	92%	93% (2.0 mm)		
	1800	9	SSW	1.8	4	1002			29	93%	92% (2.1 mm)		
07-07-24	0001	10	S	1.8	4	1002	29	27	29	92%	80% (2.2 mm)		
	0600	8	SSE	1.8	4	1003			29	94%	91% (2.0 mm)		
	1200	12	WSW	1.8	4	1002			28	91%	92% (2.2 mm)		
	1800	10	SW	1.9	4	1001			28	92%	95% (2.1 mm)		

**04 July 24 Thu (Probability 98%)**

**05 July 24 Fri (Probability 95%)**

**06 July 24 Sat (Probability 90%)**

**07 July 24 Sun (Probability 80%)**



Significant wave height (m)

**MARINE WEATHER FORECAST- 10 NM SOUTH OF MONGLA FAIRWAY (Lat 21° 16'N, Long 089° 34'E)**

**DATE : 04 to 11 July 2024**

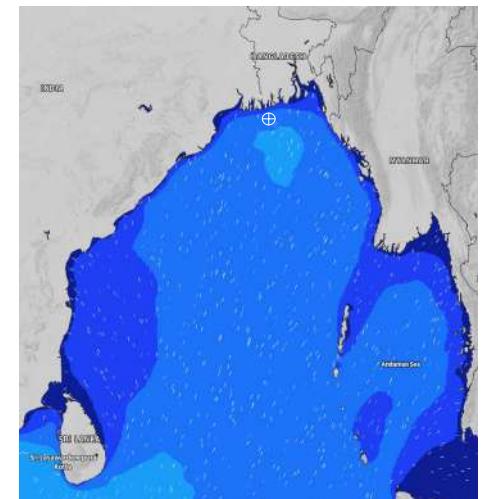
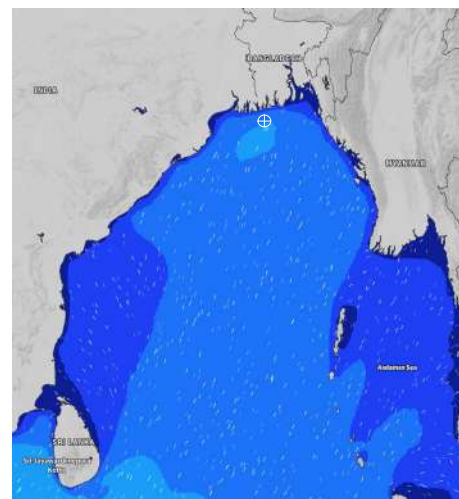
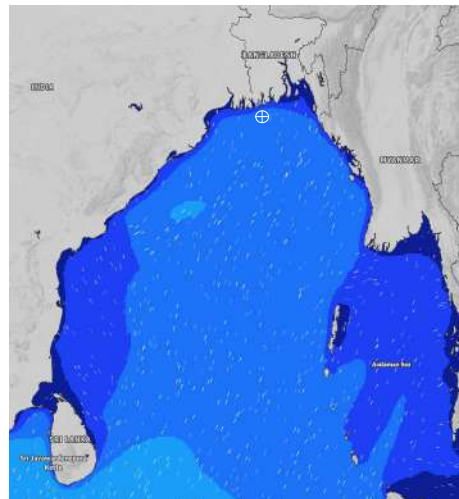
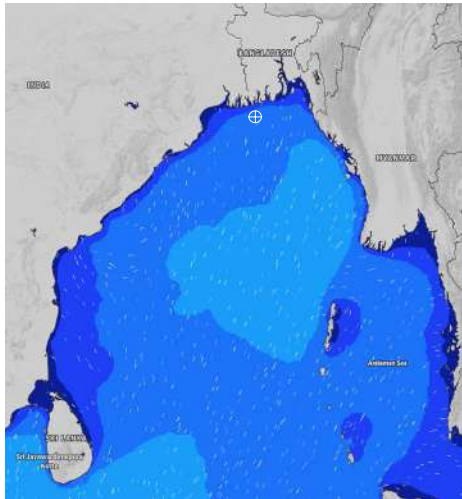
Date	Time	Max Wind Spd (kts)	Wind Direction	Wave Ht (m)	Sea State	Baro Pressure	Air Temp		Sea Surface Temp	Humidity (%)	Prob of Rain (%)	Sea State	Wave Ht (m)
							Max	Min					
08-07-24	0001	19	SW	1.7	4	1004	30	27	28	91%	61% (0.4 mm)	0	0
	0600	17	SSW	1.5	4	1003			29	94%	60% (0.2 mm)	1	0 - 0.1
	1200	18	SW	2.3	4	1004			29	92%	62% (0.5 mm)	2	0.1 - 0.5
	1800	16	SSW	2.4	4	1002			28	93%	73% (0.2 mm)	3	0.5 - 1.25
09-07-24	0001	18	SSE	1.2	4	1002	30	27	29	95%	75% (1.3 mm)	4	1.25 - 2.5
	0600	21	SE	2.2	4	1001			28	91%	64% (0.5 mm)	5	2.5 - 4.0
	1200	23	ESE	2.5	5	1002			29	94%	61% (0.2 mm)	6	4.0 - 6.0
	1800	20	SE	2.5	5	1000			29	92%	62% (0.5 mm)	7	6.0 - 9.0
10-07-24	0001	24	SSE	2.6	5	1003	31	27	29	93%	70% (0.3 mm)	8	9.0 - 14.0
	0600	25	SSE	2.5	5	1002			29	95%	42% (0.5 mm)	9	Over 14.0
	1200	22	SE	2.2	4	1003			29	90%	63% (0.6 mm)		
	1800	26	SSE	2.3	4	1002			29	94%	62% (0.4 mm)		
11-07-24	0001	21	SE	2.5	5	1004	31	27	29	90%	61% (0.7 mm)		
	0600	22	SE	2.4	4	1005			29	92%	40% (0.4 mm)		
	1200	17	SSE	2.2	4	1005			29	88%	62% (0.5 mm)		
	1800	19	SSE	2.5	5	1004			29	88%	61% (0.6 mm)		

**08 July 24 Mon (Probability 70%)**

**09 July 24 Tue (Probability 60%)**

**10 July 24 Wed (Probability 50%)**

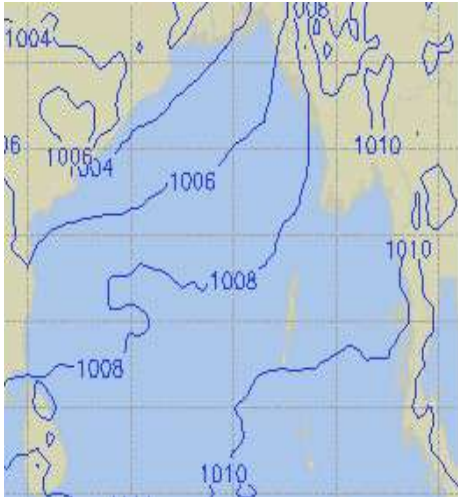
**11 July 24 Thu (Probability 50%)**



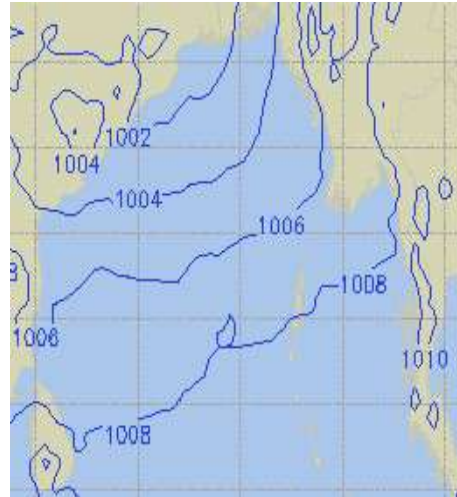
Significant wave height (m)

## PREDICTED SURFACE PRESSURE FORECAST (04 to 10 July 2024)

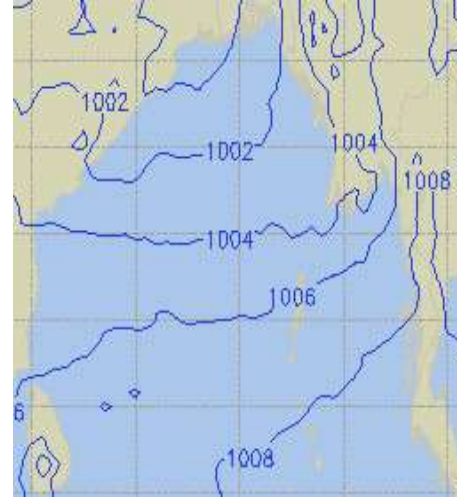
**04 July 24 Thu (Probability 98%)**



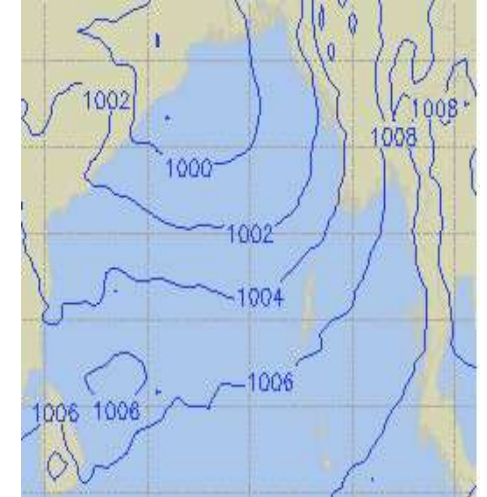
**05 July 24 Fri (Probability 95%)**



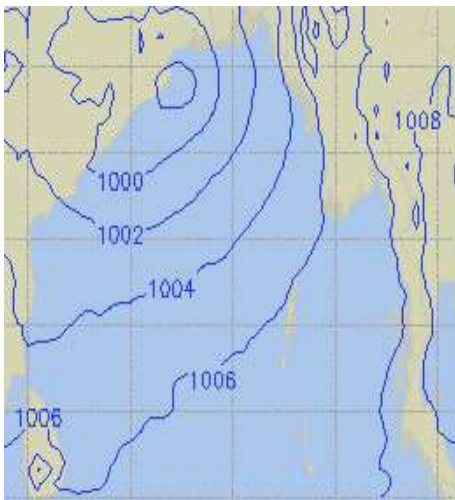
**06 July 24 Sat (Probability 90%)**



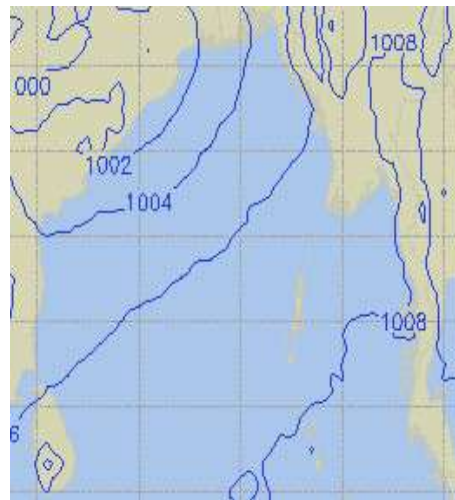
**07 July 24 Sun (Probability 80%)**



**08 July 24 Mon (Probability 70%)**



**09 July 24 Tue (Probability 60%)**



**10 July 24 Wed (Probability 50%)**

