

**MARINE WEATHER FORECAST- NEAR AUTHORITY BUOY (Lat 22° 12'N, Long 091° 38'E)**

**DATE : 04 to 11 June 2024**

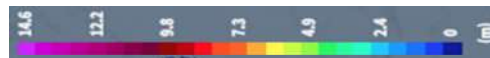
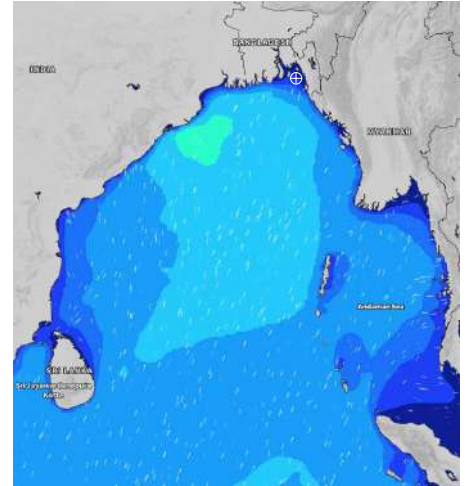
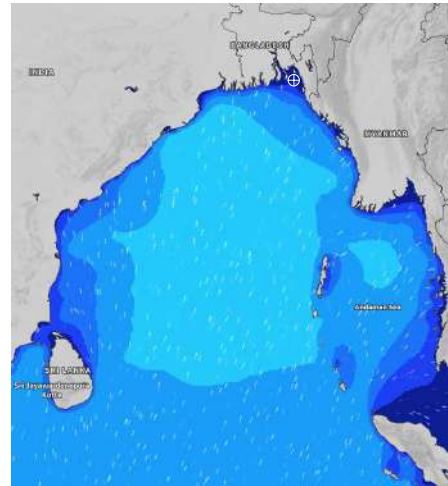
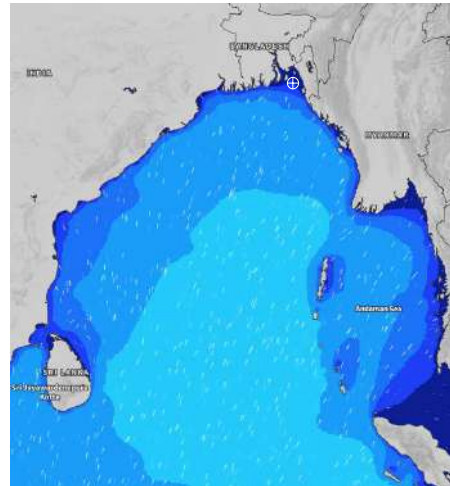
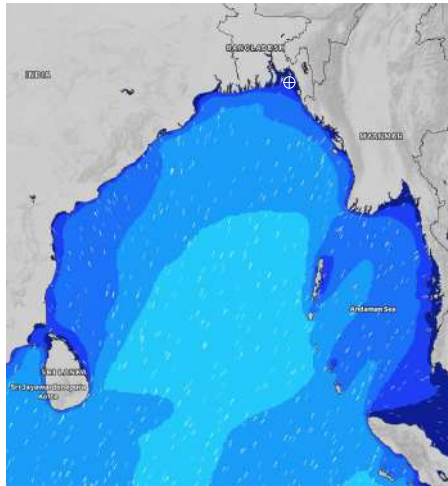
| Date     | Time | Max Wind Spd (kts) | Wind Direction | Wave Ht (m) | Sea State | Baro Pressure | Air Temp |     | Sea Surface Temp | Humidity (%) | Prb of Rain (%) | Sea State | Wave Ht (m) |
|----------|------|--------------------|----------------|-------------|-----------|---------------|----------|-----|------------------|--------------|-----------------|-----------|-------------|
|          |      |                    |                |             |           |               | Max      | Min |                  |              |                 |           |             |
| 04-06-24 | 0001 | 16                 | SSE            | 0.3         | 2         | 1007          | 32       | 26  | 29               | 90%          | 76% (3.1 mm)    | 0         | 0           |
|          | 0600 | 16                 | SSE            | 0.3         | 2         | 1006          |          |     | 29               | 93%          | 58% (1.6 mm)    | 1         | 0 - 0.1     |
|          | 1200 | 17                 | S              | 0.3         | 2         | 1007          |          |     | 29               | 86%          | 35% (0.3 mm)    | 2         | 0.1 - 0.5   |
|          | 1800 | 14                 | S              | 0.3         | 2         | 1004          |          |     | 29               | 88%          | 27% (0.1 mm)    | 3         | 0.5 - 1.25  |
| 05-06-24 | 0001 | 17                 | SE             | 0.3         | 2         | 1005          | 32       | 26  | 29               | 91%          | 32% (0.3 mm)    | 4         | 1.25 - 2.5  |
|          | 0600 | 17                 | SSE            | 0.3         | 2         | 1006          |          |     | 28               | 94%          | 27% (0.2 mm)    | 5         | 2.5 - 4.0   |
|          | 1200 | 12                 | SSW            | 0.3         | 2         | 1004          |          |     | 29               | 85%          | 23% (0.0 mm)    | 6         | 4.0 - 6.0   |
|          | 1800 | 12                 | SSW            | 0.3         | 2         | 1005          |          |     | 29               | 87%          | 19% (0.0 mm)    | 7         | 6.0 - 9.0   |
| 06-06-24 | 0001 | 18                 | SSE            | 0.3         | 2         | 1006          | 33       | 27  | 29               | 90%          | 31% (0.1 mm)    | 8         | 9.0 - 14.0  |
|          | 0600 | 14                 | SE             | 0.3         | 2         | 1006          |          |     | 28               | 92%          | 24% (0.1 mm)    | 9         | Over 14.0   |
|          | 1200 | 11                 | SSW            | 0.2         | 2         | 1004          |          |     | 29               | 84%          | 26% (0.1 mm)    |           |             |
|          | 1800 | 17                 | SSW            | 0.3         | 2         | 1005          |          |     | 29               | 87%          | 24% (0.1 mm)    |           |             |
| 07-06-24 | 0001 | 17                 | S              | 0.3         | 2         | 1005          | 33       | 27  | 29               | 90%          | 53% (0.5 mm)    |           |             |
|          | 0600 | 15                 | SSE            | 0.3         | 2         | 1006          |          |     | 28               | 95%          | 57% (0.6 mm)    |           |             |
|          | 1200 | 16                 | SSE            | 0.3         | 2         | 1005          |          |     | 29               | 83%          | 46% (0.5 mm)    |           |             |
|          | 1800 | 17                 | SSW            | 0.3         | 2         | 1004          |          |     | 29               | 88%          | 41% (0.4 mm)    |           |             |

**04 June 24 Tue (Probability 98%)**

**05 June 24 Wed (Probability 95%)**

**06 June 24 Thu (Probability 90%)**

**07 June 24 Fri (Probability 80%)**



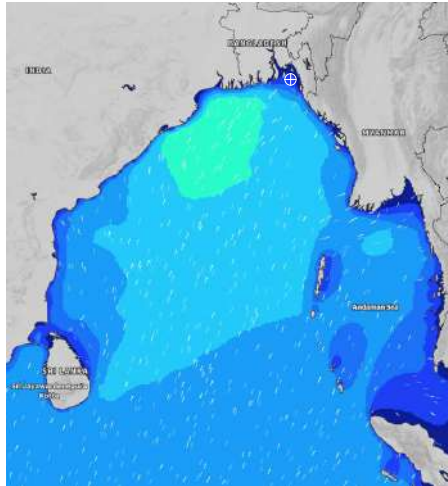
Significant wave height (m)

**MARINE WEATHER FORECAST- NEAR AUTHORITY BUOY (Lat 22° 12'N, Long 091° 38'E)**

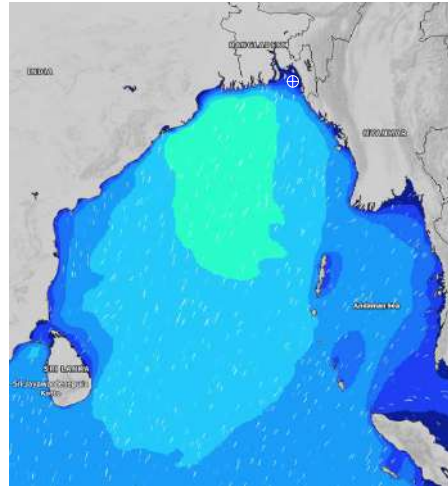
**DATE : 04 to 11 June 2024**

| Date     | Time | Max Wind Spd (kts) | Wind Direction | Wave Ht (m) | Sea State | Baro Pressure | Air Temp |     | Sea Surface Temp | Humidity (%) | Prob of Rain (%) | Sea State | Wave Ht (m) |
|----------|------|--------------------|----------------|-------------|-----------|---------------|----------|-----|------------------|--------------|------------------|-----------|-------------|
|          |      |                    |                |             |           |               | Max      | Min |                  |              |                  |           |             |
| 08-06-24 | 0001 | 23                 | SSE            | 0.4         | 2         | 1004          | 32       | 26  | 28               | 89%          | 48% (0.5 mm)     | 0         | 0           |
|          | 0600 | 18                 | SSE            | 0.4         | 2         | 1004          |          |     | 28               | 94%          | 51% (0.5 mm)     | 1         | 0 - 0.1     |
|          | 1200 | 22                 | S              | 0.4         | 2         | 1003          |          |     | 29               | 76%          | 36% (0.3 mm)     | 2         | 0.1 - 0.5   |
|          | 1800 | 22                 | S              | 0.4         | 2         | 1002          |          |     | 29               | 85%          | 24% (0.1 mm)     | 3         | 0.5 - 1.25  |
| 09-06-24 | 0001 | 23                 | SSE            | 0.4         | 2         | 1003          | 32       | 26  | 28               | 89%          | 35% (0.3 mm)     | 4         | 1.25 - 2.5  |
|          | 0600 | 23                 | SE             | 0.4         | 2         | 1003          |          |     | 28               | 95%          | 40% (0.4 mm)     | 5         | 2.5 - 4.0   |
|          | 1200 | 22                 | SSW            | 0.4         | 2         | 1004          |          |     | 29               | 78%          | 36% (0.3 mm)     | 6         | 4.0 - 6.0   |
|          | 1800 | 21                 | S              | 0.4         | 2         | 1002          |          |     | 29               | 86%          | 18% (0.0 mm)     | 7         | 6.0 - 9.0   |
| 10-06-24 | 0001 | 23                 | SSE            | 0.4         | 2         | 1003          | 32       | 26  | 28               | 90%          | 48% (0.5 mm)     | 8         | 9.0 - 14.0  |
|          | 0600 | 21                 | SE             | 0.4         | 2         | 1002          |          |     | 28               | 93%          | 47% (0.5 mm)     | 9         | Over 14.0   |
|          | 1200 | 13                 | SW             | 0.3         | 2         | 1003          |          |     | 29               | 75%          | 40% (0.4 mm)     |           |             |
|          | 1800 | 15                 | ESE            | 0.4         | 2         | 1002          |          |     | 29               | 83%          | 44% (0.4 mm)     |           |             |
| 11-06-24 | 0001 | 24                 | SE             | 0.4         | 2         | 1003          | 32       | 26  | 28               | 88%          | 59% (0.6 mm)     |           |             |
|          | 0600 | 21                 | SSE            | 0.4         | 2         | 1002          |          |     | 28               | 96%          | 62% (0.6 mm)     |           |             |
|          | 1200 | 22                 | SE             | 0.4         | 2         | 1003          |          |     | 29               | 76%          | 63% (0.6 mm)     |           |             |
|          | 1800 | 23                 | SSE            | 0.4         | 2         | 1002          |          |     | 29               | 87%          | 48% (0.5 mm)     |           |             |

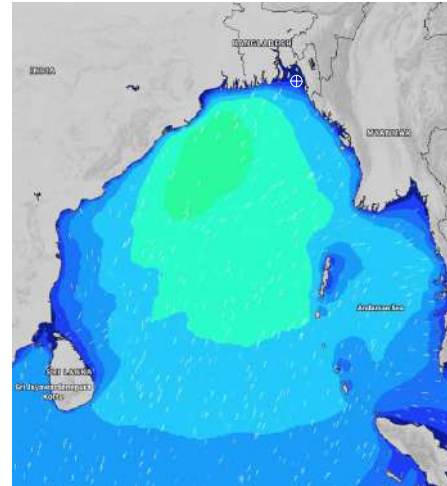
**08 June 24 Sat (Probability 70%)**



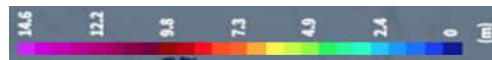
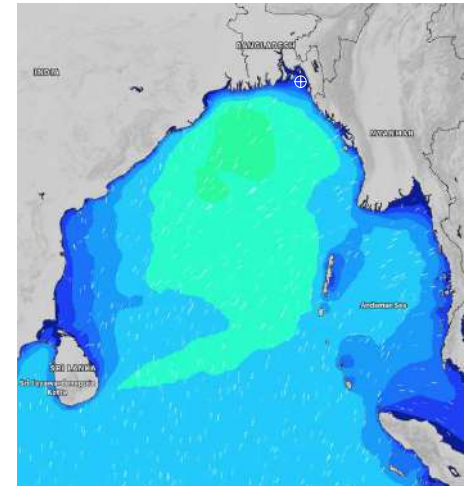
**09 June 24 Sun (Probability 60%)**



**10 June 24 Mon (Probability 50%)**



**11 June 24 Tue (Probability 50%)**



Significant wave height (m)

# MARINE WEATHER FORECAST- 20 NM WEST OF ELEPHANT POINT (Lat 21° 10'N, Long 091° 42'E)

**DATE : 04 to 11 June 2024**

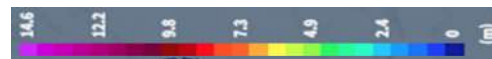
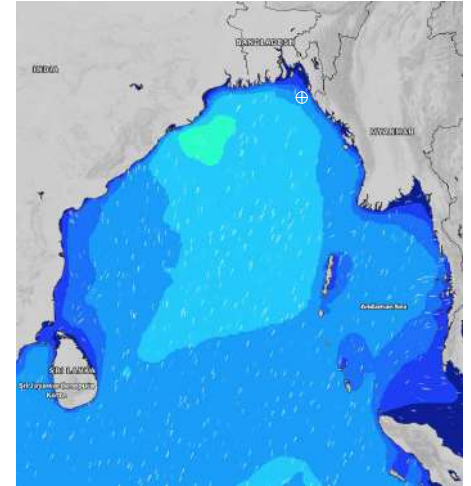
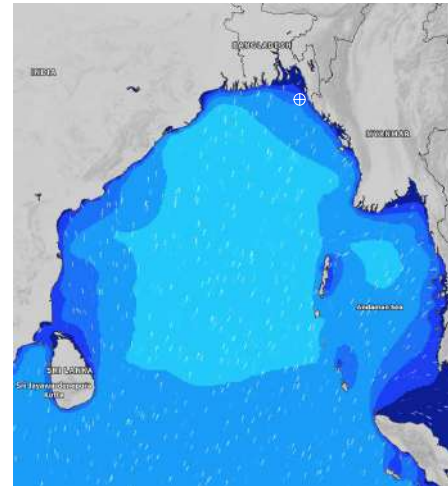
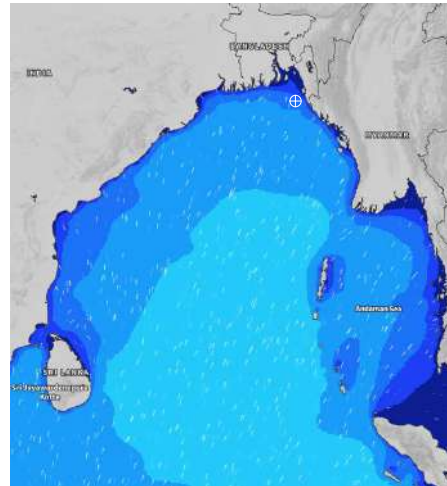
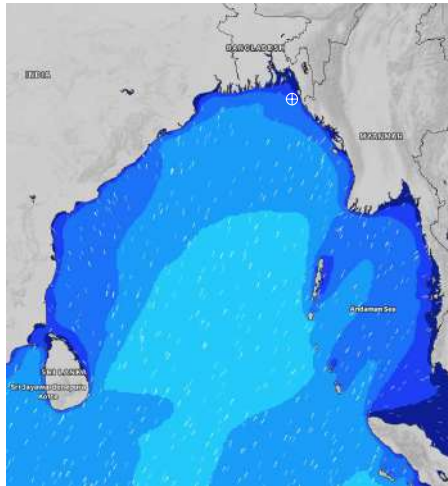
| Date     | Time | Max Wind Spd (kts) | Wind Direction | Wave Ht (m) | Sea State | Baro Pressure | Air Temp |     | Sea Surface Temp | Humidity (%) | Prob of Rain (%) | Sea State | Wave Ht (m) |
|----------|------|--------------------|----------------|-------------|-----------|---------------|----------|-----|------------------|--------------|------------------|-----------|-------------|
|          |      |                    |                |             |           |               | Max      | Min |                  |              |                  |           |             |
| 04-06-24 | 0001 | 12                 | S              | 1.2         | 3         | 1007          | 33       | 27  | 29               | 90%          | 54% (3.5 mm)     | 0         | 0           |
|          | 0600 | 11                 | SSE            | 1.2         | 3         | 1006          |          |     | 29               | 94%          | 62% (2.6 mm)     | 1         | 0 - 0.1     |
|          | 1200 | 12                 | S              | 1.3         | 4         | 1007          |          |     | 30               | 88%          | 41% (0.5 mm)     | 2         | 0.1 - 0.5   |
|          | 1800 | 10                 | S              | 1.4         | 4         | 1004          |          |     | 30               | 89%          | 36% (0.4 mm)     | 3         | 0.5 - 1.25  |
| 05-06-24 | 0001 | 14                 | SSE            | 1.4         | 4         | 1006          | 33       | 27  | 29               | 89%          | 39% (0.4 mm)     | 4         | 1.25 - 2.5  |
|          | 0600 | 12                 | SSE            | 1.5         | 4         | 1006          |          |     | 29               | 96%          | 44% (0.4 mm)     | 5         | 2.5 - 4.0   |
|          | 1200 | 12                 | SSE            | 1.4         | 4         | 1007          |          |     | 30               | 86%          | 30% (0.3 mm)     | 6         | 4.0 - 6.0   |
|          | 1800 | 14                 | S              | 1.4         | 4         | 1004          |          |     | 29               | 89%          | 20% (0.0 mm)     | 7         | 6.0 - 9.0   |
| 06-06-24 | 0001 | 13                 | S              | 1.4         | 4         | 1006          | 33       | 27  | 29               | 91%          | 30% (0.2 mm)     | 8         | 9.0 - 14.0  |
|          | 0600 | 7                  | SSW            | 1.4         | 4         | 1006          |          |     | 29               | 96%          | 27% (0.1 mm)     | 9         | Over 14.0   |
|          | 1200 | 8                  | S              | 1.5         | 4         | 1007          |          |     | 30               | 84%          | 25% (0.1 mm)     |           |             |
|          | 1800 | 14                 | SW             | 1.7         | 4         | 1004          |          |     | 29               | 90%          | 20% (0.0 mm)     |           |             |
| 07-06-24 | 0001 | 17                 | SSW            | 1.8         | 4         | 1005          | 33       | 27  | 29               | 90%          | 35% (0.2 mm)     |           |             |
|          | 0600 | 13                 | SW             | 1.8         | 4         | 1005          |          |     | 29               | 96%          | 30% (0.2 mm)     |           |             |
|          | 1200 | 15                 | SW             | 1.7         | 4         | 1006          |          |     | 30               | 88%          | 26% (0.1 mm)     |           |             |
|          | 1800 | 13                 | SSW            | 1.7         | 4         | 1004          |          |     | 29               | 89%          | 21% (0.0 mm)     |           |             |

**04 June 24 Tue (Probability 98%)**

**05 June 24 Wed (Probability 95%)**

**06 June 24 Thu (Probability 90%)**

**07 June 24 Fri (Probability 80%)**



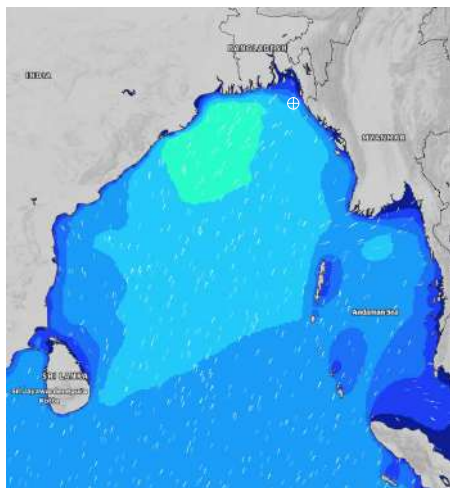
Significant wave height (m)

# MARINE WEATHER FORECAST- 20 NM WEST OF ELEPHANT POINT (Lat 21° 10'N, Long 091° 42'E)

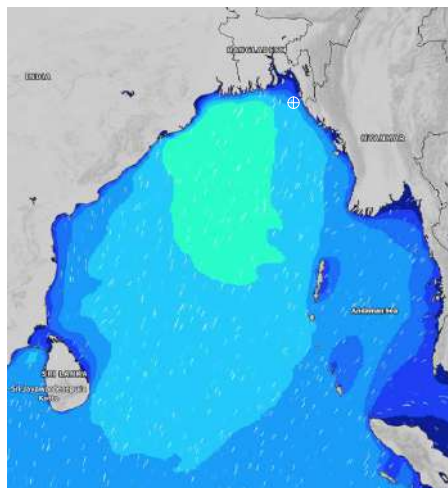
**DATE : 04 to 11 June 2024**

| Date     | Time | Max Wind Spd (kts) | Wind Direction | Wave Ht (m) | Sea State | Baro Pressure | Air Temp |     | Sea Surface Temp | Humidity (%) | Prob of Rain (%) | Sea State | Wave Ht (m) |
|----------|------|--------------------|----------------|-------------|-----------|---------------|----------|-----|------------------|--------------|------------------|-----------|-------------|
|          |      |                    |                |             |           |               | Max      | Min |                  |              |                  |           |             |
| 08-06-24 | 0001 | 19                 | S              | 1.8         | 4         | 1004          | 32       | 27  | 29               | 91%          | 44% (0.5 mm)     | 0         | 0           |
|          | 0600 | 16                 | SSW            | 1.9         | 4         | 1004          |          |     | 29               | 95%          | 52% (0.5 mm)     | 1         | 0 - 0.1     |
|          | 1200 | 17                 | SSW            | 1.9         | 4         | 1005          |          |     | 30               | 82%          | 35% (0.3 mm)     | 2         | 0.1 - 0.5   |
|          | 1800 | 18                 | SSW            | 2.0         | 4         | 1002          |          |     | 29               | 86%          | 25% (0.1 mm)     | 3         | 0.5 - 1.25  |
| 09-06-24 | 0001 | 20                 | S              | 2.0         | 4         | 1003          | 32       | 26  | 29               | 90%          | 36% (0.3 mm)     | 4         | 1.25 - 2.5  |
|          | 0600 | 18                 | S              | 2.0         | 4         | 1003          |          |     | 29               | 94%          | 42% (0.4 mm)     | 5         | 2.5 - 4.0   |
|          | 1200 | 18                 | S              | 2.0         | 4         | 1004          |          |     | 30               | 83%          | 35% (0.3 mm)     | 6         | 4.0 - 6.0   |
|          | 1800 | 18                 | S              | 2.0         | 4         | 1002          |          |     | 29               | 87%          | 14% (0.0 mm)     | 7         | 6.0 - 9.0   |
| 10-06-24 | 0001 | 23                 | SSE            | 2.1         | 4         | 1003          | 32       | 26  | 29               | 89%          | 46% (0.5 mm)     | 8         | 9.0 - 14.0  |
|          | 0600 | 20                 | SSW            | 2.0         | 4         | 1003          |          |     | 29               | 96%          | 48% (0.5 mm)     | 9         | Over 14.0   |
|          | 1200 | 17                 | S              | 2.0         | 4         | 1004          |          |     | 30               | 83%          | 47% (0.4 mm)     |           |             |
|          | 1800 | 14                 | S              | 2.0         | 4         | 1002          |          |     | 29               | 88%          | 46% (0.4 mm)     |           |             |
| 11-06-24 | 0001 | 20                 | SSE            | 2.1         | 4         | 1003          | 32       | 26  | 29               | 90%          | 55% (0.6 mm)     |           |             |
|          | 0600 | 20                 | SSW            | 2.2         | 4         | 1003          |          |     | 29               | 95%          | 66% (0.6 mm)     |           |             |
|          | 1200 | 21                 | SSW            | 2.2         | 4         | 1004          |          |     | 30               | 83%          | 68% (0.6 mm)     |           |             |
|          | 1800 | 22                 | SW             | 2.3         | 4         | 1002          |          |     | 29               | 88%          | 43% (0.5 mm)     |           |             |

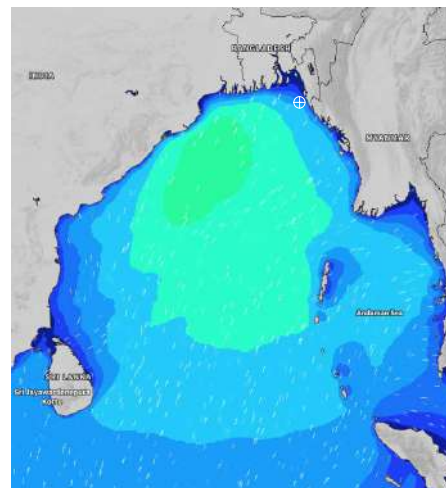
**08 June 24 Sat (Probability 70%)**



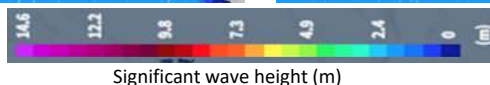
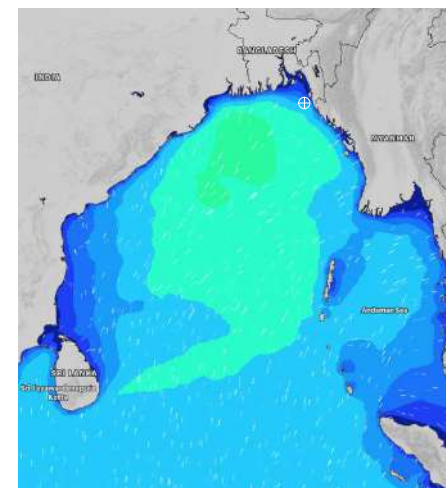
**09 June 24 Sun (Probability 60%)**



**10 June 24 Mon (Probability 50%)**



**11 June 24 Tue (Probability 50%)**



**MARINE WEATHER FORECAST- 15 NM WEST OF ST. MARTIN'S LIGHT HOUSE (Lat 20° 37'N, Long 092° 03'E)**

**DATE : 04 to 11 June 2024**

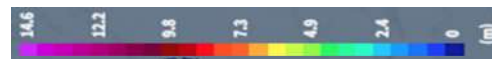
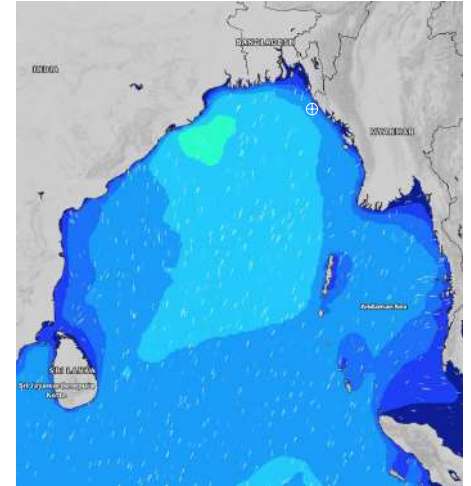
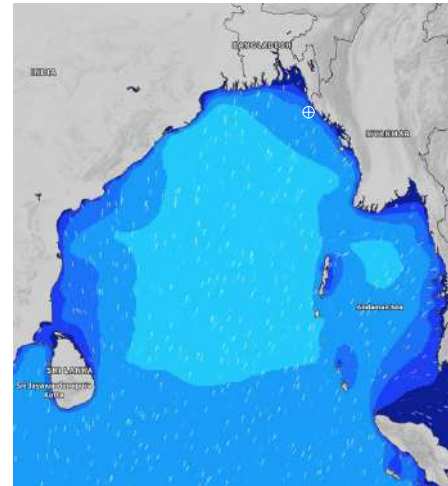
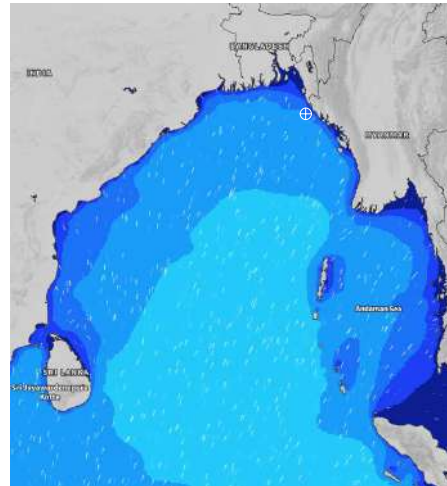
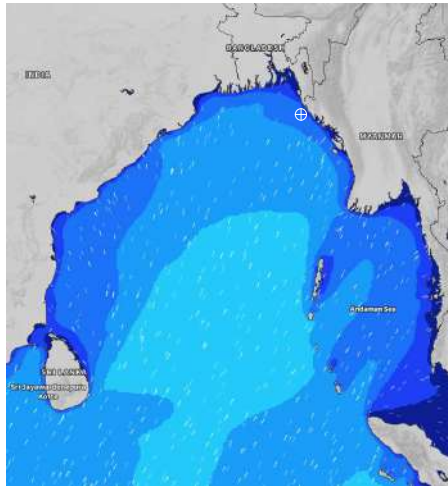
| Date     | Time | Max Wind Spd (kts) | Wind Direction | Wave Ht (m) | Sea State | Baro Pressure | Air Temp |     | Sea Surface Temp | Humidity (%) | Prob of Rain(%) | Sea State | Wave Ht (m) |
|----------|------|--------------------|----------------|-------------|-----------|---------------|----------|-----|------------------|--------------|-----------------|-----------|-------------|
|          |      |                    |                |             |           |               | Max      | Min |                  |              |                 |           |             |
| 04-06-24 | 0001 | 10                 | SSW            | 1.5         | 4         | 1008          | 32       | 27  | 29               | 91%          | 43% (1.5 mm)    | 0         | 0           |
|          | 0600 | 8                  | S              | 1.5         | 4         | 1006          |          |     | 29               | 93%          | 40% (1.0 mm)    | 1         | 0 - 0.1     |
|          | 1200 | 8                  | S              | 1.6         | 4         | 1008          |          |     | 30               | 85%          | 32% (0.2 mm)    | 2         | 0.1 - 0.5   |
|          | 1800 | 7                  | SSW            | 1.7         | 4         | 1005          |          |     | 29               | 88%          | 22% (0.0 mm)    | 3         | 0.5 - 1.25  |
| 05-06-24 | 0001 | 10                 | S              | 1.7         | 4         | 1006          | 33       | 27  | 29               | 90%          | 32% (0.2 mm)    | 4         | 1.25 - 2.5  |
|          | 0600 | 9                  | SSE            | 1.8         | 4         | 1006          |          |     | 29               | 94%          | 28% (0.1 mm)    | 5         | 2.5 - 4.0   |
|          | 1200 | 7                  | SSE            | 1.8         | 4         | 1007          |          |     | 30               | 82%          | 21% (0.0 mm)    | 6         | 4.0 - 6.0   |
|          | 1800 | 8                  | SSW            | 1.7         | 4         | 1004          |          |     | 30               | 89%          | 18% (0.0 mm)    | 7         | 6.0 - 9.0   |
| 06-06-24 | 0001 | 9                  | S              | 1.7         | 4         | 1007          | 32       | 27  | 29               | 89%          | 30% (0.2 mm)    | 8         | 9.0 - 14.0  |
|          | 0600 | 7                  | WSW            | 1.7         | 4         | 1006          |          |     | 29               | 95%          | 29% (0.1 mm)    | 9         | Over 14.0   |
|          | 1200 | 10                 | SW             | 1.8         | 4         | 1008          |          |     | 30               | 84%          | 27% (0.1 mm)    |           |             |
|          | 1800 | 12                 | SW             | 1.9         | 4         | 1005          |          |     | 30               | 89%          | 23% (0.0 mm)    |           |             |
| 07-06-24 | 0001 | 18                 | SW             | 2.1         | 4         | 1006          | 32       | 27  | 29               | 90%          | 29% (0.1 mm)    |           |             |
|          | 0600 | 13                 | SW             | 2.2         | 4         | 1005          |          |     | 29               | 95%          | 25% (0.1 mm)    |           |             |
|          | 1200 | 14                 | WSW            | 2.3         | 4         | 1007          |          |     | 30               | 83%          | 19% (0.0 mm)    |           |             |
|          | 1800 | 16                 | SW             | 2.3         | 4         | 1005          |          |     | 30               | 87%          | 17% (0.0 mm)    |           |             |

**04 June 24 Tue (Probability 98%)**

**05 June 24 Wed (Probability 95%)**

**06 June 24 Thu (Probability 90%)**

**07 June 24 Fri (Probability 80%)**



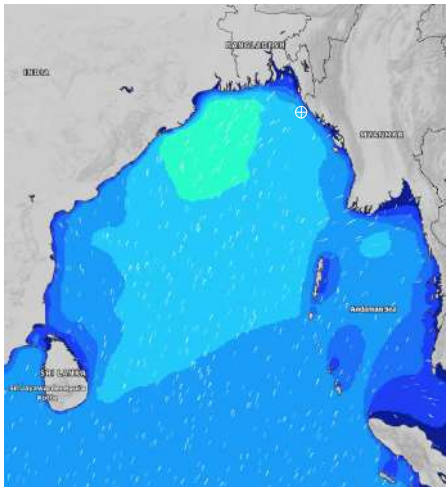
Significant wave height (m)

**MARINE WEATHER FORECAST- 15 NM WEST OF ST. MARTIN'S LIGHT HOUSE (Lat 20° 37'N, Long 092° 03'E)**

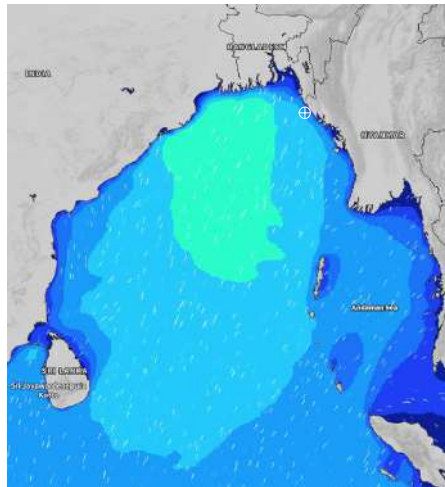
**DATE : 04 to 11 June 2024**

| Date     | Time | Max Wind Spd (kts) | Wind Direction | Wave Ht (m) | Sea State | Baro Pressure | Air Temp |     | Sea Surface Temp | Humidity (%) | Prob of Rain (%) | Sea State | Wave Ht (m) |
|----------|------|--------------------|----------------|-------------|-----------|---------------|----------|-----|------------------|--------------|------------------|-----------|-------------|
|          |      |                    |                |             |           |               | Max      | Min |                  |              |                  |           |             |
| 08-06-24 | 0001 | 17                 | SSW            | 2.3         | 4         | 1005          | 32       | 26  | 29               | 90%          | 34% (0.2 mm)     | 0         | 0           |
|          | 0600 | 18                 | SW             | 2.3         | 4         | 1004          |          |     | 29               | 94%          | 24% (0.1 mm)     | 1         | 0 - 0.1     |
|          | 1200 | 17                 | SSW            | 2.4         | 4         | 1005          |          |     | 29               | 83%          | 19% (0.0 mm)     | 2         | 0.1 - 0.5   |
|          | 1800 | 17                 | SW             | 2.5         | 4         | 1002          |          |     | 29               | 89%          | 16% (0.0 mm)     | 3         | 0.5 - 1.25  |
| 09-06-24 | 0001 | 19                 | SSW            | 2.5         | 4         | 1004          | 32       | 26  | 29               | 91%          | 40% (0.4 mm)     | 4         | 1.25 - 2.5  |
|          | 0600 | 17                 | SSW            | 2.6         | 5         | 1002          |          |     | 29               | 96%          | 35% (0.2 mm)     | 5         | 2.5 - 4.0   |
|          | 1200 | 15                 | S              | 2.6         | 5         | 1004          |          |     | 29               | 85%          | 20% (0.0 mm)     | 6         | 4.0 - 6.0   |
|          | 1800 | 15                 | SSW            | 2.5         | 4         | 1002          |          |     | 29               | 88%          | 18% (0.0 mm)     | 7         | 6.0 - 9.0   |
| 10-06-24 | 0001 | 18                 | S              | 2.5         | 4         | 1004          | 32       | 26  | 29               | 90%          | 41% (0.4 mm)     | 8         | 9.0 - 14.0  |
|          | 0600 | 20                 | SW             | 2.6         | 5         | 1003          |          |     | 29               | 93%          | 30% (0.2 mm)     | 9         | Over 14.0   |
|          | 1200 | 18                 | SSW            | 2.6         | 5         | 1004          |          |     | 29               | 81%          | 19% (0.0 mm)     |           |             |
|          | 1800 | 16                 | SSW            | 2.7         | 5         | 1002          |          |     | 29               | 86%          | 15% (0.0 mm)     |           |             |
| 11-06-24 | 0001 | 17                 | S              | 2.8         | 5         | 1004          | 32       | 26  | 29               | 90%          | 53% (0.5 mm)     |           |             |
|          | 0600 | 21                 | SSW            | 2.9         | 5         | 1003          |          |     | 29               | 96%          | 44% (0.4 mm)     |           |             |
|          | 1200 | 22                 | SSW            | 2.9         | 5         | 1003          |          |     | 29               | 85%          | 32% (0.2 mm)     |           |             |
|          | 1800 | 24                 | SW             | 2.9         | 5         | 1002          |          |     | 29               | 88%          | 30% (0.2 mm)     |           |             |

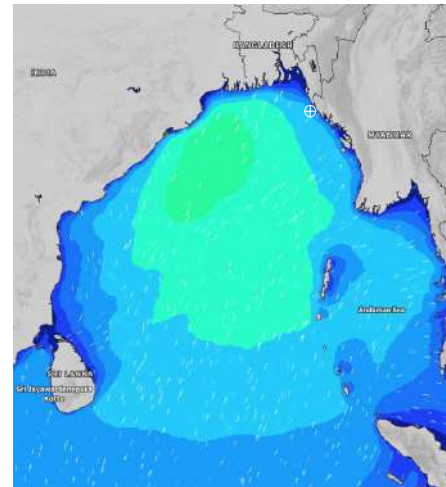
**08 June 24 Sat (Probability 70%)**



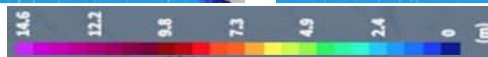
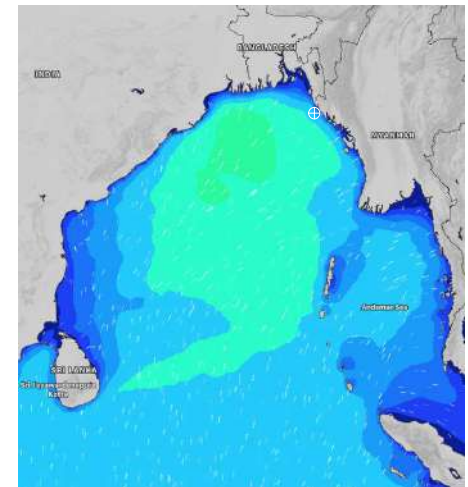
**09 June 24 Sun (Probability 60%)**



**10 June 24 Mon (Probability 50%)**



**11 June 24 Tue (Probability 50%)**



Significant wave height (m)

**MARINE WEATHER FORECAST- 40 NM ESE OF PAYRA FAIRWAY (Lat 21° 07'N, Long 090° 45'E)**

**DATE : 04 to 11 June 2024**

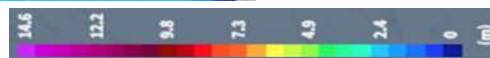
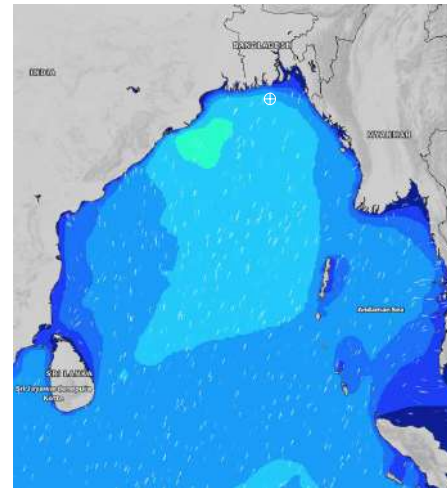
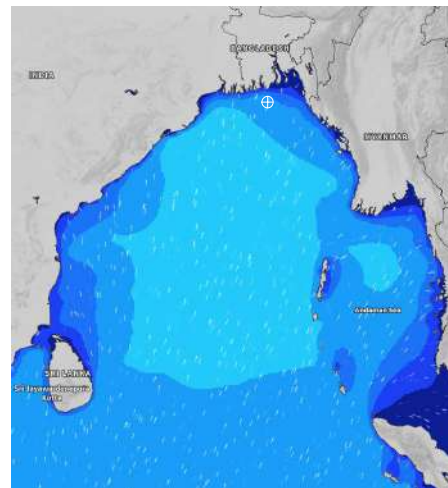
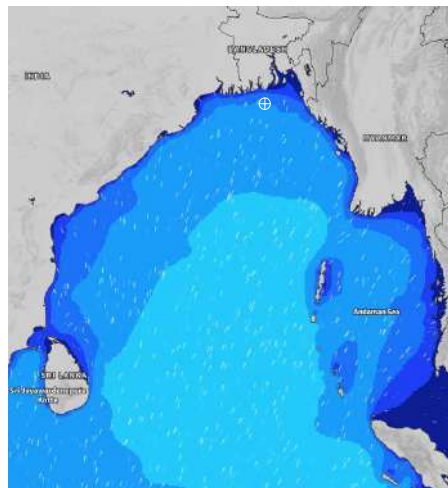
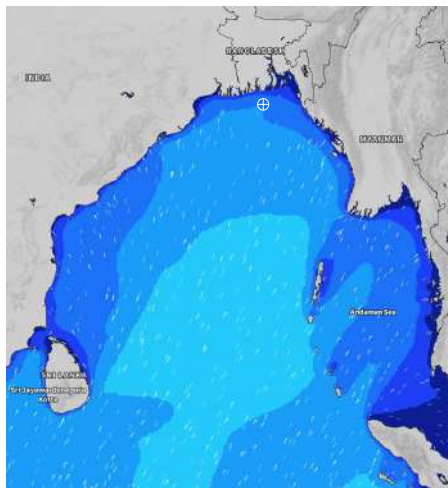
| Date     | Time | Max Wind Spd (kts) | Wind Direction | Wave Ht (m) | Sea State | Baro Pressure | Air Temp |     | Sea Surface Temp | Humidity (%) | Prob of Rain (%) | Sea State | Wave Ht (m) |
|----------|------|--------------------|----------------|-------------|-----------|---------------|----------|-----|------------------|--------------|------------------|-----------|-------------|
|          |      |                    |                |             |           |               | Max      | Min |                  |              |                  |           |             |
| 04-06-24 | 0001 | 17                 | SSW            | 1.6         | 4         | 1006          | 33       | 27  | 29               | 89%          | 30% (0.2 mm)     | 0         | 0           |
|          | 0600 | 15                 | SSW            | 1.7         | 4         | 1006          |          |     | 29               | 91%          | 28% (0.1 mm)     | 1         | 0 - 0.1     |
|          | 1200 | 15                 | SSW            | 1.8         | 4         | 1007          |          |     | 30               | 83%          | 24% (0.1 mm)     | 2         | 0.1 - 0.5   |
|          | 1800 | 12                 | SSW            | 1.9         | 4         | 1004          |          |     | 30               | 88%          | 22% (0.0 mm)     | 3         | 0.5 - 1.25  |
| 05-06-24 | 0001 | 16                 | S              | 1.9         | 4         | 1005          | 33       | 27  | 29               | 88%          | 24% (0.1 mm)     | 4         | 1.25 - 2.5  |
|          | 0600 | 11                 | SSW            | 1.9         | 4         | 1006          |          |     | 29               | 93%          | 20% (0.0 mm)     | 5         | 2.5 - 4.0   |
|          | 1200 | 10                 | S              | 1.8         | 4         | 1005          |          |     | 30               | 82%          | 19% (0.0 mm)     | 6         | 4.0 - 6.0   |
|          | 1800 | 13                 | SSW            | 1.8         | 4         | 1004          |          |     | 30               | 87%          | 20% (0.0 mm)     | 7         | 6.0 - 9.0   |
| 06-06-24 | 0001 | 17                 | SSW            | 1.8         | 4         | 1006          | 33       | 27  | 29               | 89%          | 26% (0.1 mm)     | 8         | 9.0 - 14.0  |
|          | 0600 | 14                 | SW             | 1.9         | 4         | 1006          |          |     | 29               | 93%          | 23% (0.0 mm)     | 9         | Over 14.0   |
|          | 1200 | 12                 | SSW            | 2.0         | 4         | 1007          |          |     | 30               | 86%          | 19% (0.0 mm)     |           |             |
|          | 1800 | 18                 | SW             | 2.2         | 4         | 1004          |          |     | 30               | 88%          | 20% (0.0 mm)     |           |             |
| 07-06-24 | 0001 | 22                 | SW             | 2.5         | 4         | 1005          | 33       | 27  | 29               | 90%          | 27% (0.1 mm)     |           |             |
|          | 0600 | 19                 | SSW            | 2.6         | 5         | 1004          |          |     | 29               | 92%          | 23% (0.0 mm)     |           |             |
|          | 1200 | 18                 | SW             | 2.6         | 5         | 1005          |          |     | 30               | 84%          | 19% (0.0 mm)     |           |             |
|          | 1800 | 16                 | SSW            | 2.6         | 5         | 1003          |          |     | 30               | 87%          | 21% (0.0 mm)     |           |             |

**04 June 24 Tue (Probability 98%)**

**05 June 24 Wed (Probability 95%)**

**06 June 24 Thu (Probability 90%)**

**07 June 24 Fri (Probability 80%)**



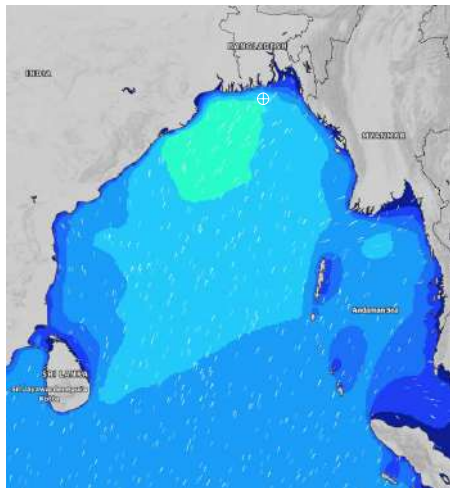
Significant wave height (m)

**MARINE WEATHER FORECAST- 40 NM ESE OF PAYRA FAIRWAY (Lat 21° 07'N, Long 090° 45'E)**

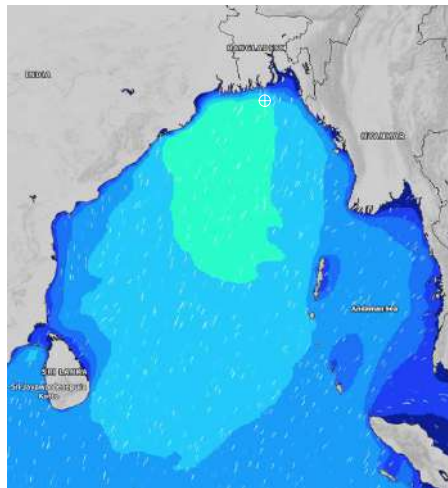
**DATE : 04 to 11 June 2024**

| Date     | Time | Max Wind Spd (kts) | Wind Direction | Wave Ht (m) | Sea Stae | Baro Pressure | Air Temp |     | Sea Surface Temp | Humidity (%) | Prob of Rain (%) | Sea State | Wave Ht (m) |
|----------|------|--------------------|----------------|-------------|----------|---------------|----------|-----|------------------|--------------|------------------|-----------|-------------|
|          |      |                    |                |             |          |               | Max      | Min |                  |              |                  |           |             |
| 08-06-24 | 0001 | 23                 | SSW            | 2.6         | 5        | 1003          | 32       | 27  | 29               | 90%          | 24% (0.1 mm)     | 0         | 0           |
|          | 0600 | 21                 | SSW            | 2.8         | 5        | 1003          |          |     | 29               | 93%          | 20% (0.0 mm)     | 1         | 0 - 0.1     |
|          | 1200 | 24                 | SSW            | 2.9         | 5        | 1004          |          |     | 30               | 82%          | 19% (0.0 mm)     | 2         | 0.1 - 0.5   |
|          | 1800 | 22                 | SSW            | 2.8         | 5        | 1002          |          |     | 30               | 88%          | 15% (0.0 mm)     | 3         | 0.5 - 1.25  |
| 09-06-24 | 0001 | 23                 | SSW            | 3.0         | 5        | 1002          | 32       | 26  | 29               | 89%          | 23% (0.0 mm)     | 4         | 1.25 - 2.5  |
|          | 0600 | 20                 | S              | 3.0         | 5        | 1003          |          |     | 29               | 93%          | 15% (0.0 mm)     | 5         | 2.5 - 4.0   |
|          | 1200 | 24                 | SSW            | 3.0         | 5        | 1002          |          |     | 30               | 84%          | 18% (0.0 mm)     | 6         | 4.0 - 6.0   |
|          | 1800 | 21                 | SSW            | 2.8         | 5        | 1001          |          |     | 30               | 88%          | 17% (0.0 mm)     | 7         | 6.0 - 9.0   |
| 10-06-24 | 0001 | 23                 | S              | 2.9         | 5        | 1002          | 32       | 26  | 29               | 90%          | 29% (0.1 mm)     | 8         | 9.0 - 14.0  |
|          | 0600 | 25                 | SSW            | 3.0         | 5        | 1003          |          |     | 29               | 95%          | 15% (0.0 mm)     | 9         | Over 14.0   |
|          | 1200 | 21                 | SSW            | 2.9         | 5        | 1002          |          |     | 30               | 83%          | 17% (0.0 mm)     |           |             |
|          | 1800 | 20                 | SSW            | 2.9         | 5        | 1001          |          |     | 30               | 87%          | 26% (0.1 mm)     |           |             |
| 11-06-24 | 0001 | 25                 | SSW            | 3.0         | 5        | 1002          | 32       | 26  | 29               | 91%          | 28% (0.1 mm)     |           |             |
|          | 0600 | 26                 | SSW            | 3.2         | 5        | 1003          |          |     | 29               | 96%          | 17% (0.0 mm)     |           |             |
|          | 1200 | 22                 | SW             | 3.0         | 5        | 1002          |          |     | 30               | 85%          | 18% (0.0 mm)     |           |             |
|          | 1800 | 23                 | SSW            | 3.0         | 5        | 1001          |          |     | 30               | 88%          | 22% (0.0 mm)     |           |             |

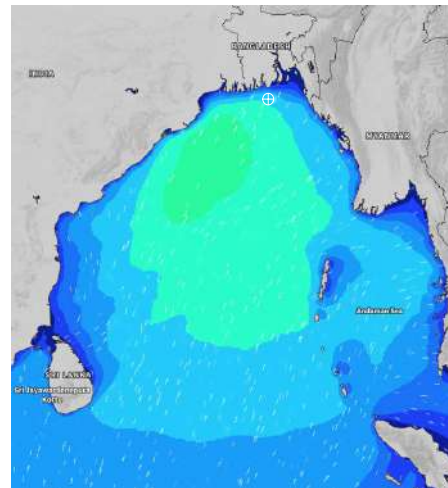
**08 June 24 Sat (Probability 70%)**



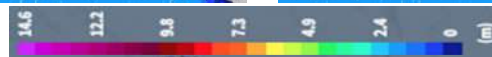
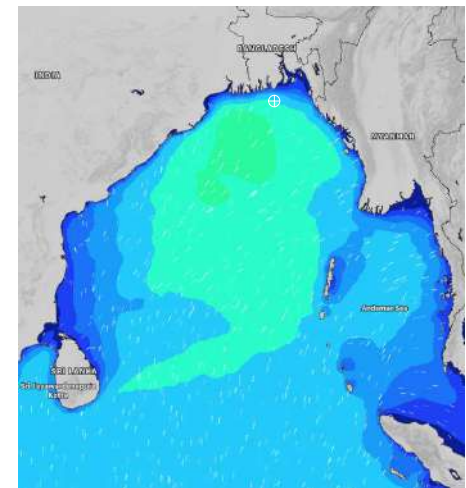
**09 June 24 Sun (Probability 60%)**



**10 June 24 Mon (Probability 50%)**



**11 June 24 Tue (Probability 50%)**



Significant wave height (m)



**MARINE WEATHER FORECAST- 10 NM SOUTH OF MONGLA FAIRWAY (Lat 21° 16'N, Long 089° 34'E)**

**DATE : 04 to 11 June 2024**

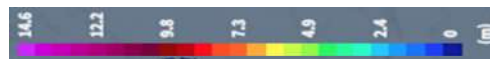
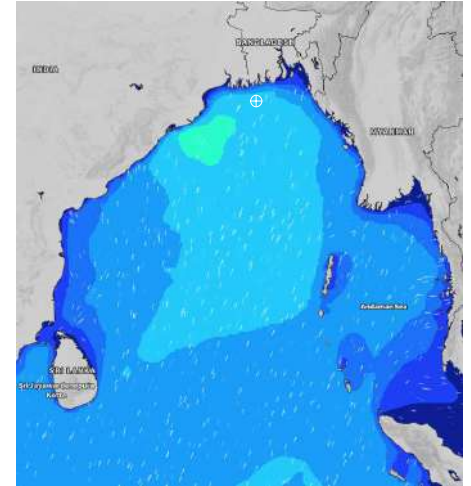
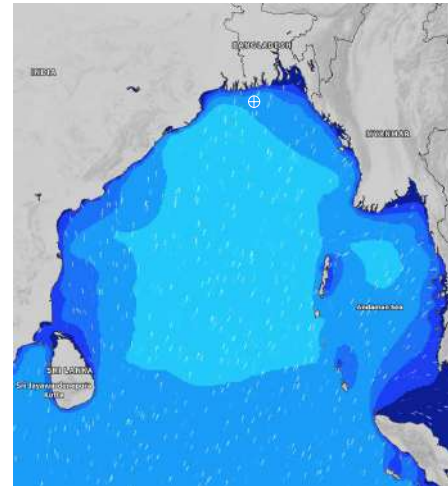
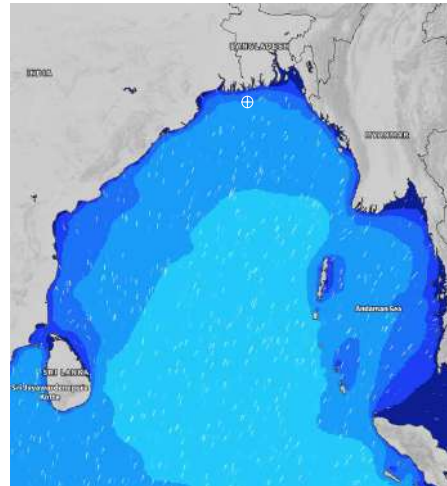
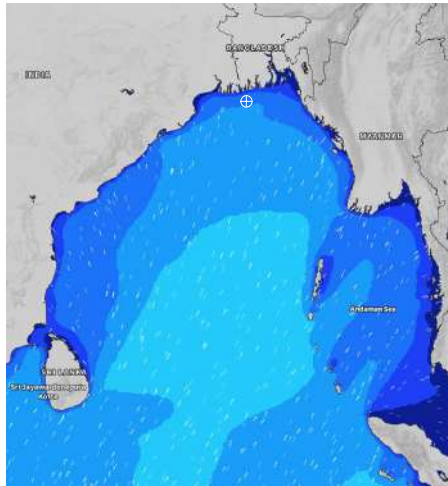
| Date     | Time | Max Wind Spd (kts) | Wind Direction | Wave Ht (m) | Sea State | Baro Pressure | Air Temp |     | Sea Surface Temp | Humidity (%) | Prob of Rain (%) | Sea State | Wave Ht (m) |
|----------|------|--------------------|----------------|-------------|-----------|---------------|----------|-----|------------------|--------------|------------------|-----------|-------------|
|          |      |                    |                |             |           |               | Max      | Min |                  |              |                  |           |             |
| 04-06-24 | 0001 | 20                 | SSW            | 1.6         | 4         | 1005          | 33       | 27  | 29               | 91%          | 30% (0.2 mm)     | 0         | 0           |
|          | 0600 | 16                 | SSW            | 1.7         | 4         | 1004          |          |     | 29               | 93%          | 24% (0.1 mm)     | 1         | 0 - 0.1     |
|          | 1200 | 14                 | SW             | 1.8         | 4         | 1005          |          |     | 30               | 81%          | 18% (0.0 mm)     | 2         | 0.1 - 0.5   |
|          | 1800 | 11                 | SSW            | 1.7         | 4         | 1003          |          |     | 30               | 87%          | 15% (0.0 mm)     | 3         | 0.5 - 1.25  |
| 05-06-24 | 0001 | 16                 | S              | 1.8         | 4         | 1005          | 33       | 27  | 29               | 89%          | 24% (0.1 mm)     | 4         | 1.25 - 2.5  |
|          | 0600 | 14                 | SSW            | 1.8         | 4         | 1005          |          |     | 29               | 95%          | 13% (0.0 mm)     | 5         | 2.5 - 4.0   |
|          | 1200 | 15                 | SSW            | 1.8         | 4         | 1006          |          |     | 30               | 78%          | 15% (0.0 mm)     | 6         | 4.0 - 6.0   |
|          | 1800 | 17                 | S              | 1.8         | 4         | 1003          |          |     | 30               | 88%          | 16% (0.0 mm)     | 7         | 6.0 - 9.0   |
| 06-06-24 | 0001 | 20                 | SSW            | 1.8         | 4         | 1005          | 33       | 26  | 29               | 90%          | 27% (0.2 mm)     | 8         | 9.0 - 14.0  |
|          | 0600 | 19                 | SSW            | 1.9         | 4         | 1005          |          |     | 29               | 94%          | 15% (0.0 mm)     | 9         | Over 14.0   |
|          | 1200 | 18                 | SSW            | 2.0         | 4         | 1006          |          |     | 30               | 83%          | 16% (0.0 mm)     |           |             |
|          | 1800 | 19                 | SSW            | 2.1         | 4         | 1003          |          |     | 30               | 88%          | 18% (0.0 mm)     |           |             |
| 07-06-24 | 0001 | 27                 | SW             | 2.3         | 4         | 1004          | 33       | 26  | 29               | 89%          | 29% (0.2 mm)     |           |             |
|          | 0600 | 24                 | SSW            | 2.7         | 5         | 1003          |          |     | 29               | 92%          | 15% (0.0 mm)     |           |             |
|          | 1200 | 23                 | SSW            | 2.6         | 5         | 1004          |          |     | 30               | 83%          | 16% (0.0 mm)     |           |             |
|          | 1800 | 22                 | SSW            | 2.6         | 5         | 1002          |          |     | 30               | 88%          | 18% (0.0 mm)     |           |             |

**04 June 24 Tue (Probability 98%)**

**05 June 24 Wed (Probability 95%)**

**06 June 24 Thu (Probability 90%)**

**07 June 24 Fri (Probability 80%)**



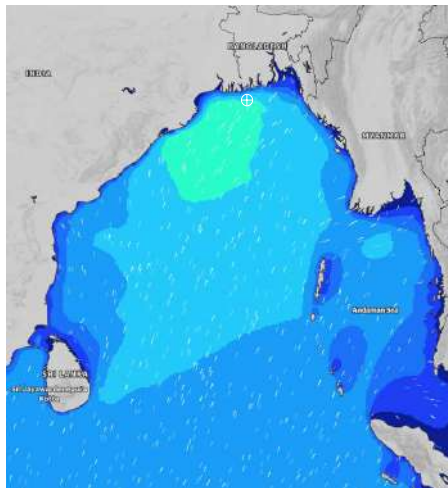
Significant wave height (m)

# MARINE WEATHER FORECAST- 10 NM SOUTH OF MONGLA FAIRWAY (Lat 21° 16'N, Long 089° 34'E)

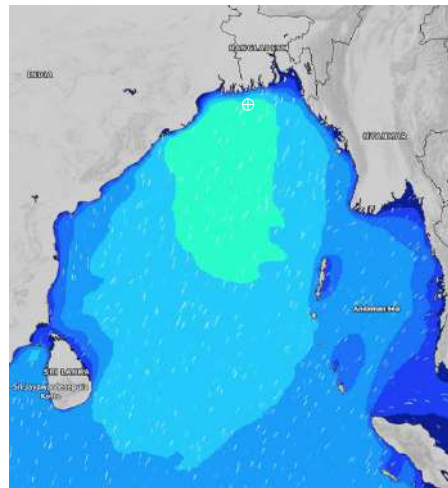
**DATE : 04 to 11 June 2024**

| Date     | Time | Max Wind Spd (kts) | Wind Direction | Wave Ht (m) | Sea State | Baro Pressure | Air Temp |     | Sea Surface Temp | Humidity (%) | Prob of Rain (%) | Sea State | Wave Ht (m) |
|----------|------|--------------------|----------------|-------------|-----------|---------------|----------|-----|------------------|--------------|------------------|-----------|-------------|
|          |      |                    |                |             |           |               | Max      | Min |                  |              |                  |           |             |
| 08-06-24 | 0001 | 28                 | SSW            | 2.9         | 5         | 1002          | 32       | 26  | 29               | 92%          | 32% (0.1 mm)     | 0         | 0           |
|          | 0600 | 28                 | SSW            | 3.0         | 5         | 1002          |          |     | 29               | 95%          | 26% (0.1 mm)     | 1         | 0 - 0.1     |
|          | 1200 | 30                 | SSW            | 3.1         | 5         | 1002          |          |     | 30               | 86%          | 20% (0.0 mm)     | 2         | 0.1 - 0.5   |
|          | 1800 | 30                 | SSW            | 3.2         | 5         | 1001          |          |     | 30               | 89%          | 23% (0.0 mm)     | 3         | 0.5 - 1.25  |
| 09-06-24 | 0001 | 29                 | SSW            | 3.3         | 5         | 1001          | 32       | 26  | 29               | 92%          | 35% (0.2 mm)     | 4         | 1.25 - 2.5  |
|          | 0600 | 26                 | S              | 3.2         | 5         | 1002          |          |     | 29               | 94%          | 28% (0.1 mm)     | 5         | 2.5 - 4.0   |
|          | 1200 | 29                 | SSW            | 3.2         | 5         | 1001          |          |     | 30               | 82%          | 24% (0.1 mm)     | 6         | 4.0 - 6.0   |
|          | 1800 | 22                 | S              | 3.0         | 5         | 1001          |          |     | 30               | 86%          | 19% (0.0 mm)     | 7         | 6.0 - 9.0   |
| 10-06-24 | 0001 | 24                 | SSW            | 3.0         | 5         | 1002          | 32       | 26  | 29               | 93%          | 36% (0.2 mm)     | 8         | 9.0 - 14.0  |
|          | 0600 | 24                 | SSW            | 3.0         | 5         | 1001          |          |     | 29               | 95%          | 30% (0.2 mm)     | 9         | Over 14.0   |
|          | 1200 | 23                 | SSW            | 3.0         | 5         | 1002          |          |     | 30               | 82%          | 26% (0.1 mm)     |           |             |
|          | 1800 | 21                 | S              | 3.0         | 5         | 1001          |          |     | 30               | 88%          | 22% (0.0 mm)     |           |             |
| 11-06-24 | 0001 | 24                 | SSW            | 3.0         | 5         | 1002          | 32       | 26  | 29               | 92%          | 35% (0.2 mm)     |           |             |
|          | 0600 | 25                 | SSW            | 3.1         | 5         | 1002          |          |     | 29               | 94%          | 30% (0.2 mm)     |           |             |
|          | 1200 | 26                 | SSW            | 3.1         | 5         | 1002          |          |     | 30               | 83%          | 24% (0.1 mm)     |           |             |
|          | 1800 | 24                 | SSW            | 3.0         | 5         | 1001          |          |     | 30               | 88%          | 20% (0.0 mm)     |           |             |

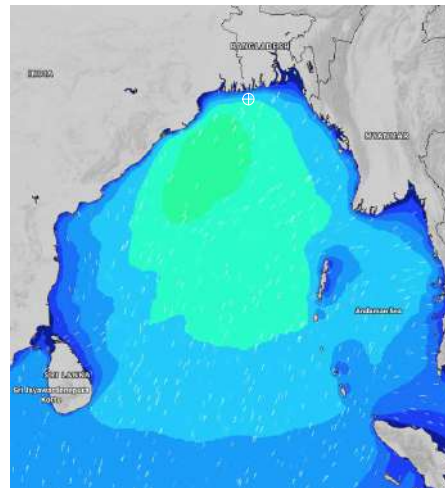
**08 June 24 Sat (Probability 70%)**



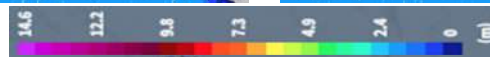
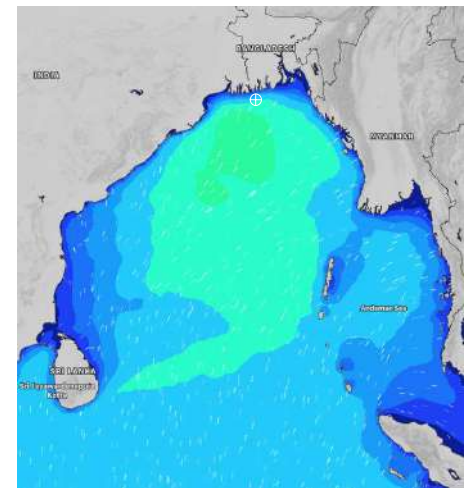
**09 June 24 Sun (Probability 60%)**



**10 June 24 Mon (Probability 50%)**



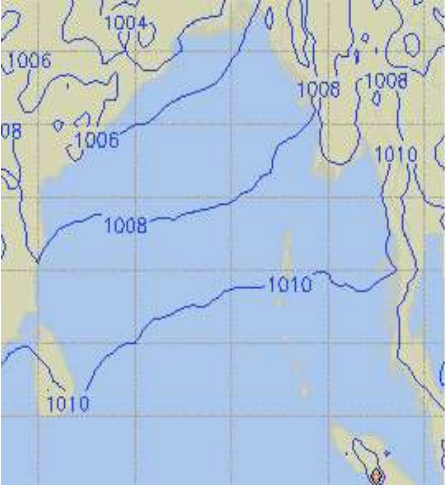
**11 June 24 Tue (Probability 50%)**



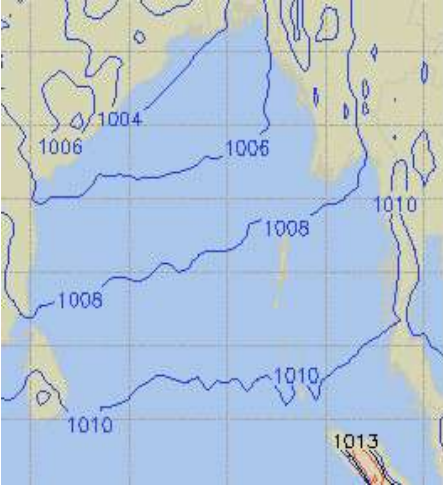
Significant wave height (m)

**PREDICTED SURFACE PRESSURE FORECAST (04 to 10 June 2024)**

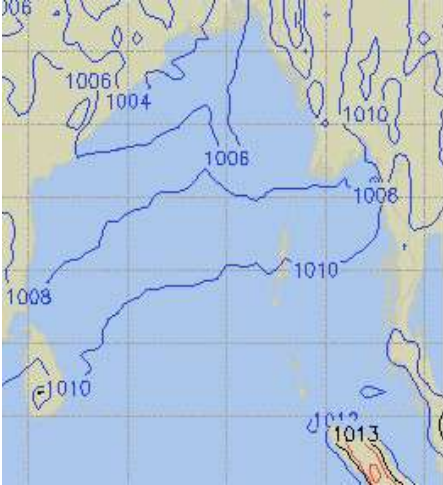
**04 June 24 Tue (Probability 98%)**



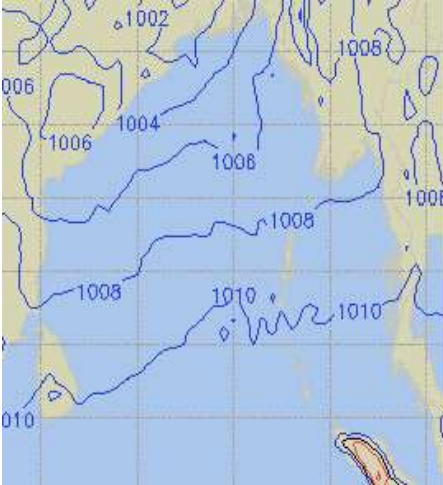
**05 June 24 Wed (Probability 95%)**



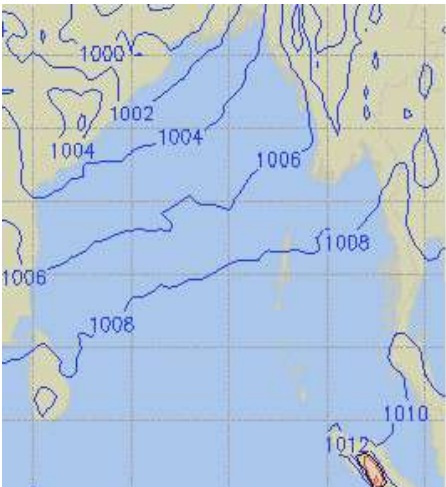
**06 June 24 Thu (Probability 90%)**



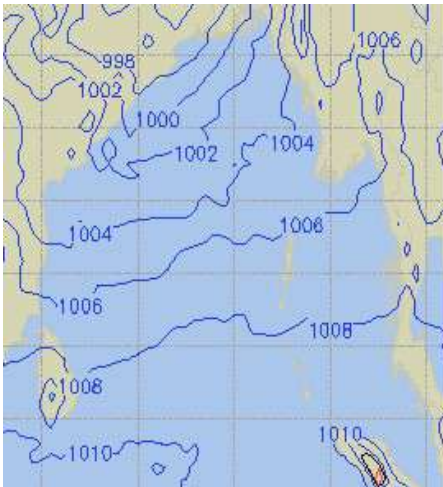
**07 June 24 Fri (Probability 80%)**



**08 June 24 Sat (Probability 70%)**



**09 June 24 Sun (Probability 60%)**



**10 June 24 Mon (Probability 50%)**

