



**SUMMARY OF MARINE WEATHER FORECAST**  
**COASTAL AREA OF BANGLADESH**  
**DATE: 04 to 11 Mar 2025**



Fleet forecast	Trough of low lies over the West Bengal and adjoining area. Seasonal low lies over the South Bay.
Wind direction, speed	West/North-westerly 8 kts, (Temporary gusting up to 17 kts).
Wave height & sea state	Wave height: 0.1 to 0.9 m (Sea state:1 to 3).
Sea surface temperature	22°C - 27°C (May remain nearly unchanged).
Baro pressure	1010-1013 mb.
Rainfall	Partly cloudy sky over Bay of Bengal & adjoining area.
Fog	Light fog may occur over the coastal area during late night to early morning.

**Outlook for 04 to 11 Mar 2025:** Weather may remain dry with partly cloudy sky. Night and day temperature may rise.



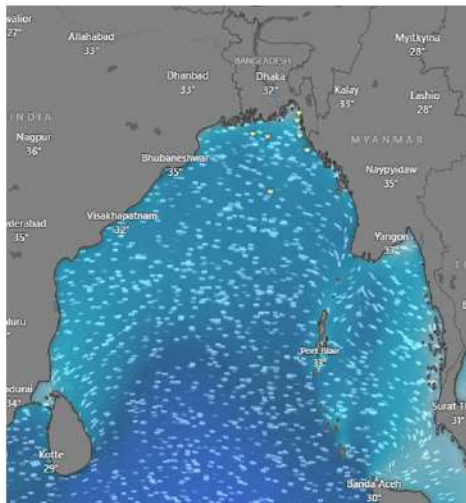
# MARINE WEATHER FORECAST (04 to 11 Mar 2025)

## PATENGA POINT (22° 12' N, 091° 38' E)

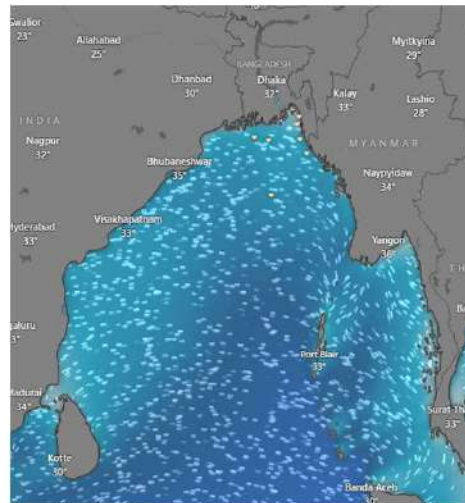


Date	Time	Air Temp (°C)		Sea Surface Temp (°C)	Baro Pressure (mbar)	Wind Direction	Wind Spd (kts)		Wave Ht (m)	Sea State	Humidity (%)	Prob of Rain (%)	Amount of Rain (mm)
		Max	Min				Gusting	Avg					
04-03-25 (Tuesday)	0001	30	21	24	1010	SW	6	3	0.1	1	93	7	0.0
	0600			23	1013	NNE	8	4	0.1	1	95	8	0.0
	1200			27	1011	SW	11	7	0.1	1	54	2	0.0
	1800			25	1012	W	12	4	0.1	1	75	5	0.0
05-03-25 (Wednesday)	0001	31	21	24	1010	NNW	7	5	0.1	1	82	6	0.0
	0600			23	1013	SE	10	3	0.1	1	93	8	0.0
	1200			27	1011	W	9	5	0.1	1	54	3	0.0
	1800			25	1012	SSW	12	7	0.1	1	76	7	0.0
06-03-25 (Thursday)	0001	31	21	24	1010	SSW	13	6	0.2	2	91	6	0.0
	0600			23	1013	W	8	3	0.2	2	93	9	0.0
	1200			27	1011	SSW	14	9	0.2	2	55	5	0.0
	1800			25	1012	NW	11	4	0.2	2	76	7	0.0
07-03-25 (Friday)	0001	31	21	24	1010	N	8	4	0.1	1	82	6	0.0
	0600			23	1013	NNE	11	5	0.2	2	84	8	0.0
	1200			27	1011	W	12	8	0.2	2	51	3	0.0
	1800			25	1012	SSW	11	6	0.2	2	66	8	0.0

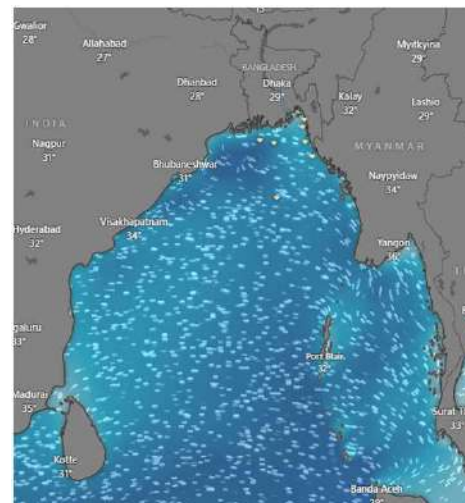
**04 Mar 2025**



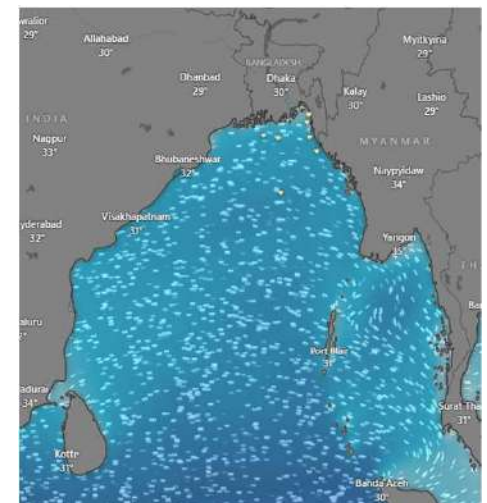
**05 Mar 2025**



**06 Mar 2025**



**07 Mar 2025**



Significant wave height (m)



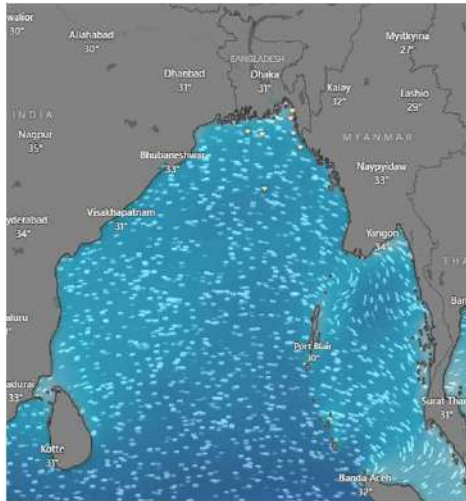
# MARINE WEATHER FORECAST (04 to 11 Mar 2025)

## PATENGA POINT (22° 12' N, 091° 38' E)

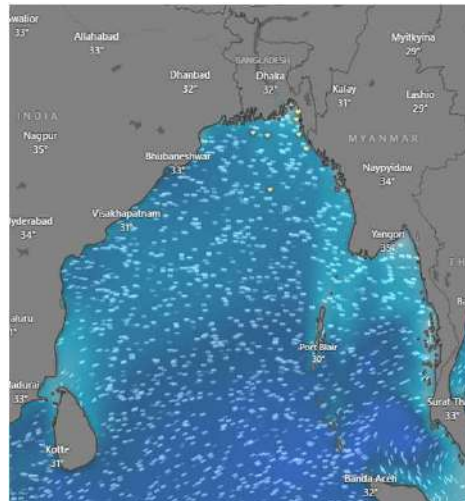


Date	Time	Air Temp (°C)		Sea Surface Temp (°C)	Baro Pressure (mbar)	Wind Direction	Wind Spd (kts)		Wave Ht (m)	Sea State	Humidity (%)	Prob of Rain (%)	Amount of Rain (mm)
		Max	Min				Gusting	Avg					
08-03-25 (Saturday)	0001	31	21	25	1010	N	10	7	0.3	2	76	6	0.0
	0600			24	1013	NNE	9	6	0.2	2	85	8	0.0
	1200			27	1010	NW	11	7	0.2	2	53	4	0.0
	1800			25	1012	W	12	8	0.2	2	72	6	0.0
09-03-25 (Sunday)	0001	31	21	25	1010	W	10	7	0.2	2	88	7	0.0
	0600			24	1013	NE	10	6	0.2	2	93	8	0.0
	1200			27	1010	SSW	11	5	0.3	2	58	4	0.0
	1800			25	1012	SSW	10	5	0.2	2	74	6	0.0
10-03-25 (Monday)	0001	31	21	25	1010	SSE	7	4	0.1	1	87	7	0.0
	0600			24	1013	SE	8	5	0.1	1	90	9	0.0
	1200			27	1010	SSW	9	6	0.3	2	54	3	0.0
	1800			25	1012	SSW	14	8	0.3	2	73	6	0.0
11-03-25 (Tuesday)	0001	31	21	25	1010	SSE	7	3	0.1	1	84	5	0.0
	0600			24	1013	SE	8	3	0.1	1	86	8	0.0
	1200			27	1010	SW	10	4	0.3	2	53	3	0.0
	1800			25	1012	SW	13	8	0.3	2	76	7	0.0

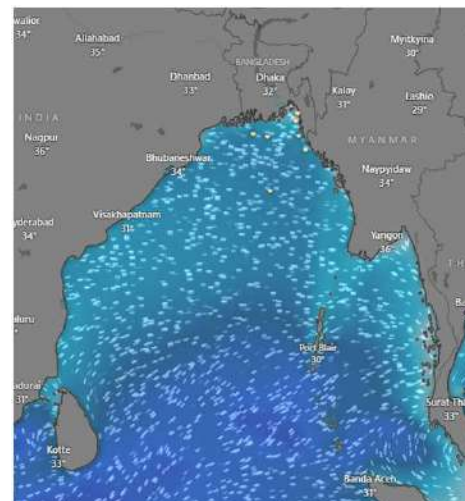
**08 Mar 2025**



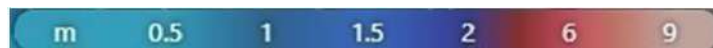
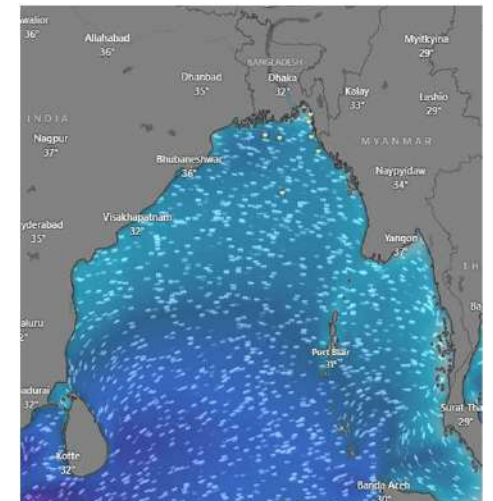
**09 Mar 2025**



**10 Mar 2025**



**11 Mar 2025**



Significant wave height (m)





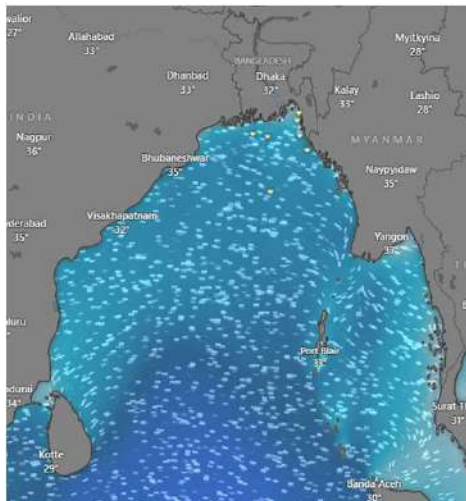
# MARINE WEATHER FORECAST (04 to 11 Mar 2025)

## ABEAM TO KUTUBDIA (21° 51' N, 091° 40' E)

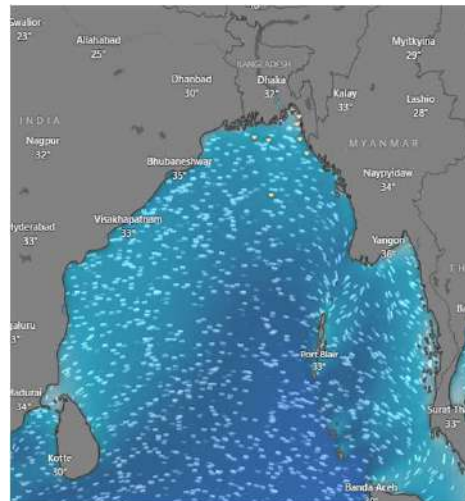


Date	Time	Air Temp (°C)		Sea Surface Temp (°C)	Baro Pressure (mbar)	Wind Direction	Wind Spd (kts)		Wave Ht (m)	Sea State	Humidity (%)	Prob of Rain (%)	Amount of Rain (mm)
		Max	Min				Gusting	Avg					
04-03-25 (Tuesday)	0001	31	20	24	1011	NW	8	5	0.2	2	92	6	0.0
	0600			23	1013	E	9	6	0.2	2	96	8	0.0
	1200			27	1010	NNW	7	5	0.2	2	53	3	0.0
	1800			25	1012	NW	8	5	0.2	2	77	5	0.0
05-03-25 (Wednesday)	0001	30	20	24	1011	NW	9	7	0.2	2	81	7	0.0
	0600			23	1013	SSE	10	6	0.3	2	92	9	0.0
	1200			27	1010	NW	6	3	0.2	2	54	2	0.0
	1800			25	1012	SSW	8	6	0.2	2	76	6	0.0
06-03-25 (Thursday)	0001	30	20	24	1011	SSW	11	8	0.3	2	91	8	0.0
	0600			23	1013	W	8	3	0.3	2	93	9	0.0
	1200			27	1010	SW	8	4	0.3	2	55	3	0.0
	1800			25	1012	W	7	5	0.2	2	76	6	0.0
07-03-25 (Friday)	0001	30	20	24	1011	NNW	8	5	0.2	2	83	7	0.0
	0600			23	1013	NNE	14	8	0.3	2	86	9	0.0
	1200			27	1010	NW	8	5	0.3	2	52	3	0.0
	1800			25	1012	SW	12	9	0.2	2	67	6	0.0

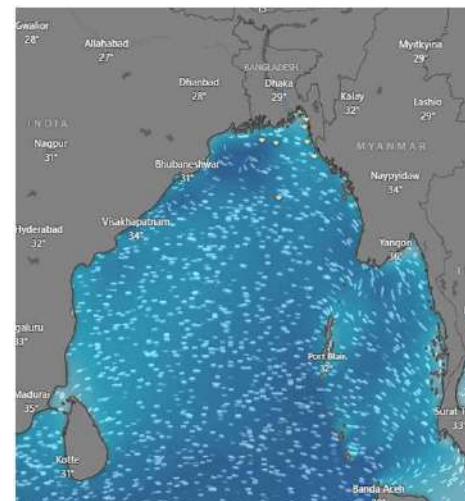
**04 Mar 2025**



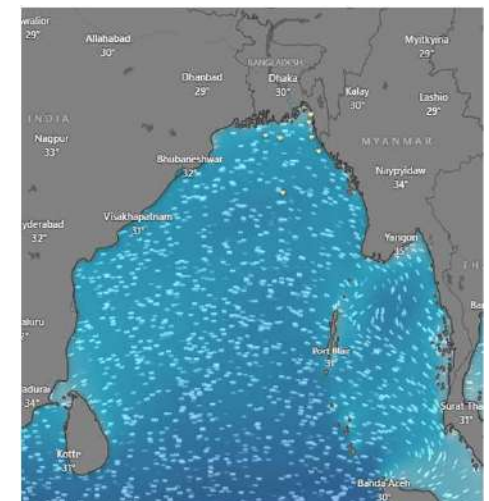
**05 Mar 2025**



**06 Mar 2025**



**07 Mar 2025**



Significant wave height (m)



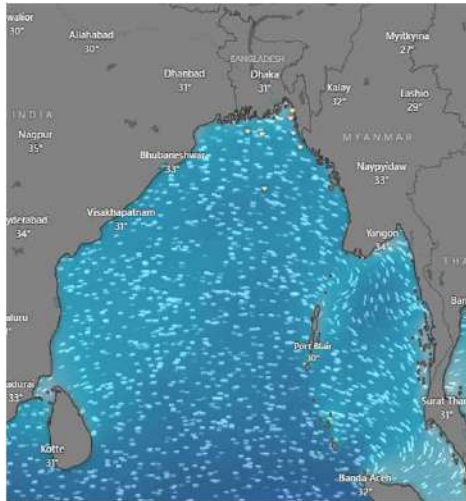
# MARINE WEATHER FORECAST (04 to 11 Mar 2025)

## ABEAM TO KUTUBDIA (21° 51' N, 091° 40' E)

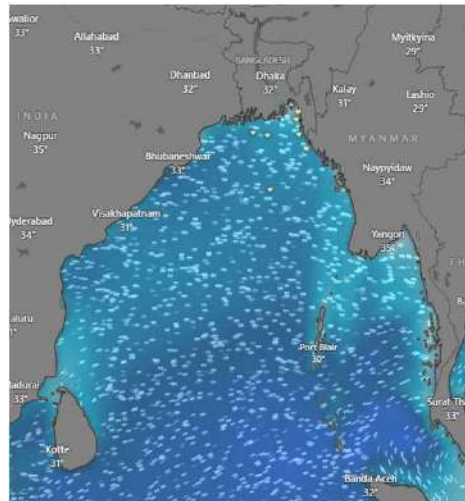


Date	Time	Air Temp (°C)		Sea Surface Temp (°C)	Baro Pressure (mbar)	Wind Direction	Wind Spd (kts)		Wave Ht (m)	Sea State	Humidity (%)	Prob of Rain (%)	Amount of Rain (mm)
		Max	Min				Gusting	Avg					
08-03-25 (Saturday)	0001	30	20	24	1011	W	12	10	0.3	2	78	7	0.0
	0600			23	1013	E	14	9	0.2	2	85	8	0.0
	1200			27	1010	SW	8	6	0.2	2	54	3	0.0
	1800			25	1012	SW	11	10	0.2	2	73	5	0.0
09-03-25 (Sunday)	0001	30	20	24	1011	SW	10	6	0.2	2	88	6	0.0
	0600			23	1013	E	11	7	0.2	2	93	8	0.0
	1200			27	1010	SW	10	6	0.3	2	58	3	0.0
	1800			25	1012	SSW	12	9	0.3	2	74	5	0.0
10-03-25 (Monday)	0001	30	20	24	1011	SSW	10	7	0.2	2	87	5	0.0
	0600			23	1013	SSE	11	8	0.2	2	90	8	0.0
	1200			27	1010	SW	10	6	0.3	2	54	3	0.0
	1800			25	1012	SSW	12	8	0.3	2	73	6	0.0
11-03-25 (Tuesday)	0001	30	20	24	1011	SW	9	6	0.2	2	82	6	0.0
	0600			23	1013	SE	10	5	0.2	2	87	8	0.0
	1200			27	1010	SW	10	6	0.3	2	54	3	0.0
	1800			25	1012	SSW	11	7	0.3	2	75	7	0.0

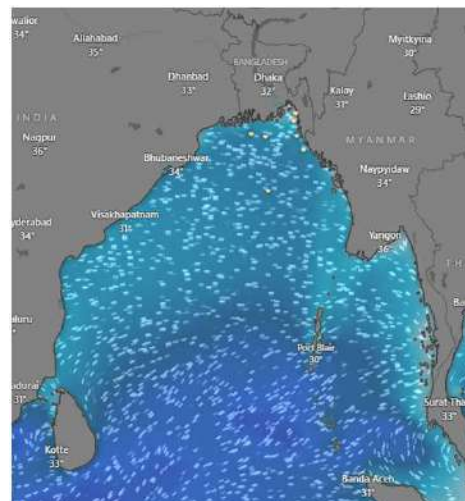
**08 Mar 2025**



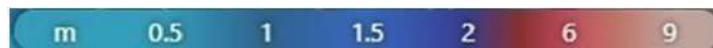
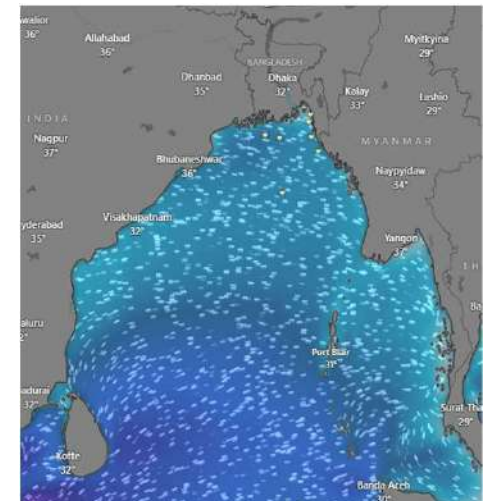
**09 Mar 2025**



**10 Mar 2025**



**11 Mar 2025**



Significant wave height (m)



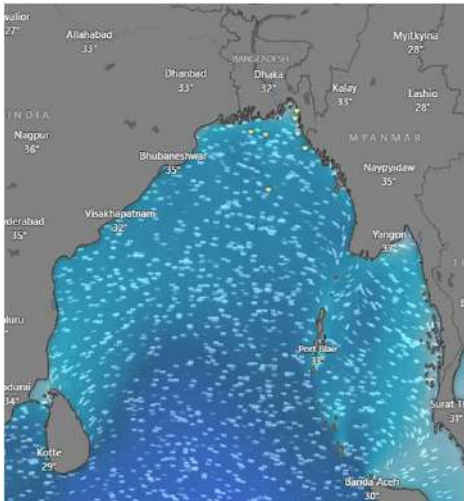


# MARINE WEATHER FORECAST (04 to 11 Mar 2025) ABEAM TO ELEPHANT POINT (21° 11' N, 091° 52' E)

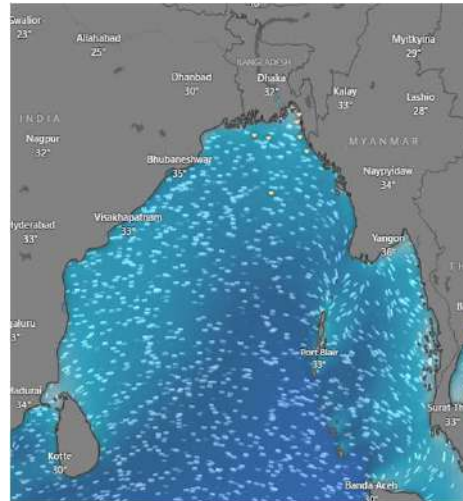


Date	Time	Air Temp (°C)		Sea Surface Temp (°C)	Baro Pressure (mbar)	Wind Direction	Wind Spd (kts)		Wave Ht (m)	Sea State	Humidity (%)	Prob of Rain (%)	Amount of Rain (mm)
		Max	Min				Gusting	Avg					
04-03-25 (Tuesday)	0001	30	20	24	1009	W	10	5	0.6	3	95	6	0.0
	0600			23	1013	NE	9	7	0.6	3	97	8	0.0
	1200			27	1010	N	11	9	0.6	3	56	3	0.0
	1800			25	1012	NNW	13	9	0.6	3	77	7	0.0
05-03-25 (Wednesday)	0001	30	20	24	1009	NW	10	8	0.5	2	82	5	0.0
	0600			23	1013	NNE	9	3	0.5	2	96	8	0.0
	1200			27	1010	NW	8	6	0.5	2	53	3	0.0
	1800			25	1012	W	12	7	0.5	2	75	5	0.0
06-03-25 (Thursday)	0001	30	20	24	1009	W	10	7	0.5	2	92	6	0.0
	0600			23	1013	SE	7	2	0.6	3	94	8	0.0
	1200			27	1010	SSW	7	5	0.6	3	55	4	0.0
	1800			25	1012	SW	9	6	0.6	3	76	6	0.0
07-03-25 (Friday)	0001	30	20	24	1009	NNW	11	9	0.6	3	84	7	0.0
	0600			23	1013	NNE	13	9	0.6	3	87	9	0.0
	1200			27	1010	NNW	9	6	0.6	3	52	3	0.0
	1800			25	1012	W	11	9	0.6	3	68	5	0.0

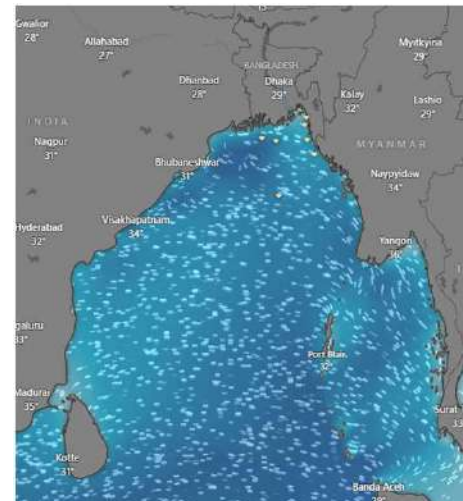
**04 Mar 2025**



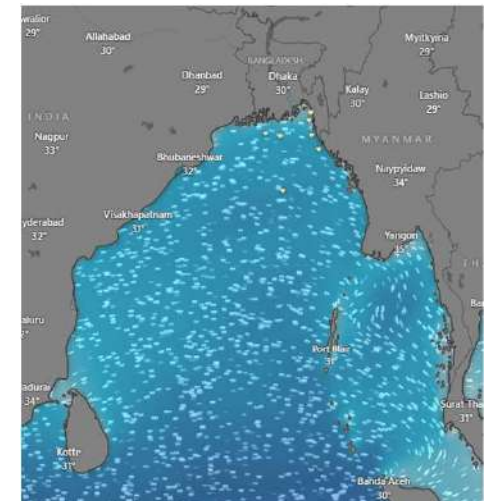
**05 Mar 2025**



**06 Mar 2025**



**07 Mar 2025**



Significant wave height (m)

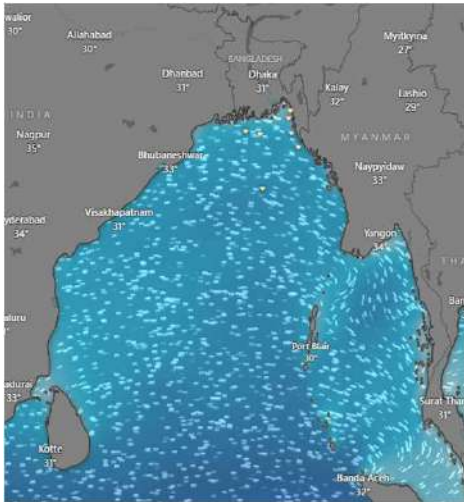


# MARINE WEATHER FORECAST (04 to 11 Mar 2025) ABEAM TO ELEPHANT POINT (21° 11' N, 091° 52' E)

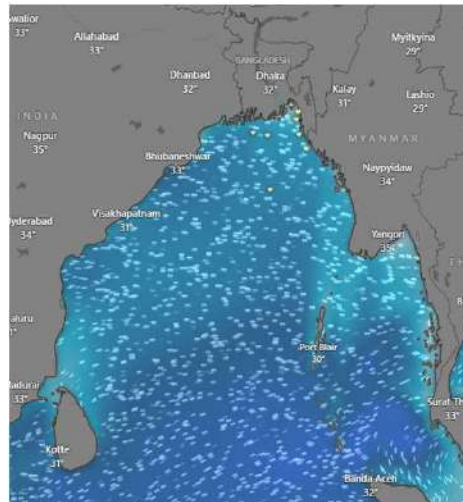


Date	Time	Air Temp (°C)		Sea Surface Temp (°C)	Baro Pressure (mbar)	Wind Direction	Wind Spd (kts)		Wave Ht (m)	Sea State	Humidity (%)	Prob of Rain (%)	Amount of Rain (mm)
		Max	Min				Gusting	Avg					
08-03-25 (Saturday)	0001	30	20	24	1011	W	14	9	0.5	2	74	6	0.0
	0600			23	1013	NNE	13	8	0.5	2	87	8	0.0
	1200			27	1010	NNW	11	6	0.5	2	52	3	0.0
	1800			25	1012	NW	10	8	0.5	2	76	5	0.0
09-03-25 (Sunday)	0001	30	20	24	1011	NW	11	7	0.5	2	87	8	0.0
	0600			23	1013	NNE	10	6	0.5	2	94	9	0.0
	1200			27	1010	SSW	9	7	0.6	3	58	3	0.0
	1800			25	1012	NW	13	10	0.6	3	74	7	0.0
10-03-25 (Monday)	0001	30	20	24	1011	NW	12	8	0.7	3	87	8	0.0
	0600			23	1013	NNE	10	6	0.7	3	90	9	0.0
	1200			27	1010	SSW	12	7	0.7	3	54	4	0.0
	1800			25	1012	SW	13	9	0.7	3	73	6	0.0
11-03-25 (Tuesday)	0001	30	20	24	1011	SW	10	7	0.6	3	85	6	0.0
	0600			23	1013	NNE	9	6	0.6	3	88	9	0.0
	1200			27	1010	SSW	11	8	0.6	3	52	3	0.0
	1800			25	1012	SSW	12	10	0.6	3	77	7	0.0

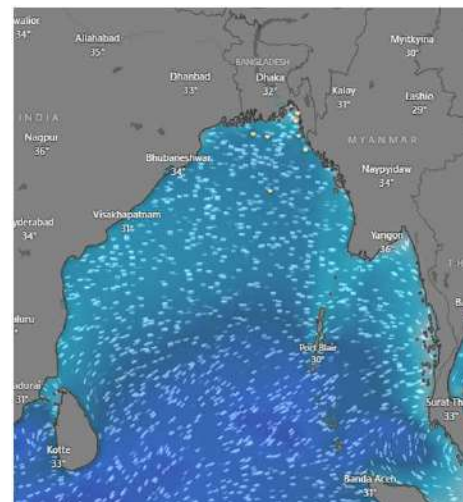
**08 Mar 2025**



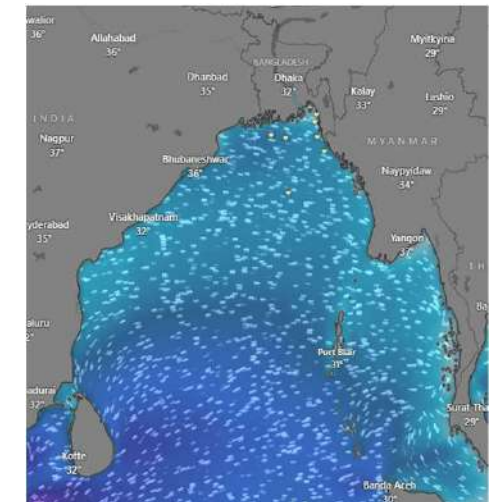
**09 Mar 2025**



**10 Mar 2025**



**11 Mar 2025**



Significant wave height (m)





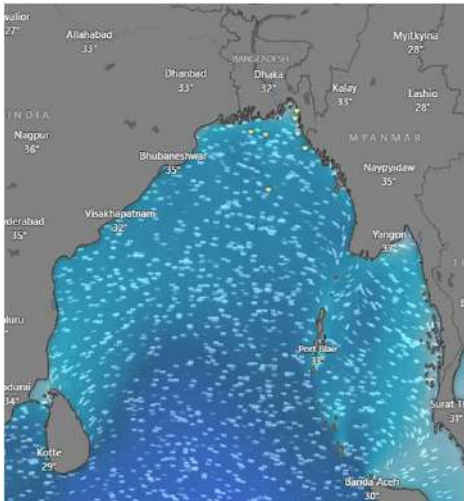
# MARINE WEATHER FORECAST (04 to 11 Mar 2025)

## ABEAM TO ST. MARTIN'S LIGHT HOUSE (20° 37' N, 092° 08' E)

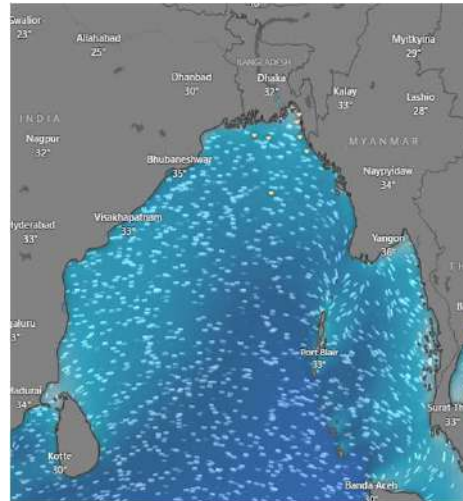


Date	Time	Air Temp (°C)		Sea Surface Temp (°C)	Baro Pressure (mbar)	Wind Direction	Wind Spd (kts)		Wave Ht (m)	Sea State	Humidity (%)	Prob of Rain (%)	Amount of Rain (mm)
		Max	Min				Gusting	Avg					
04-03-25 (Tuesday)	0001	30	20	24	1011	NNW	14	9	0.6	3	94	6	0.0
	0600			23	1013	NNE	12	8	0.6	3	96	9	0.0
	1200			27	1010	NW	9	6	0.6	3	56	5	0.0
	1800			25	1012	NNW	16	13	0.7	3	74	7	0.0
05-03-25 (Wednesday)	0001	30	20	24	1011	NNW	14	10	0.6	3	84	6	0.0
	0600			23	1013	NNE	7	4	0.6	3	92	8	0.0
	1200			27	1010	NW	10	8	0.6	3	52	3	0.0
	1800			25	1012	NW	16	12	0.6	3	73	5	0.0
06-03-25 (Thursday)	0001	30	20	24	1011	NW	11	9	0.6	3	92	7	0.0
	0600			23	1013	N	8	4	0.6	3	94	9	0.0
	1200			27	1010	NNW	8	4	0.6	3	56	3	0.0
	1800			25	1012	W	12	8	0.6	3	74	6	0.0
07-03-25 (Friday)	0001	30	20	24	1011	NNW	14	9	0.7	3	84	6	0.0
	0600			23	1013	N	11	7	0.7	3	81	8	0.0
	1200			27	1010	NW	10	8	0.7	3	50	3	0.0
	1800			25	1012	NW	13	10	0.6	3	63	5	0.0

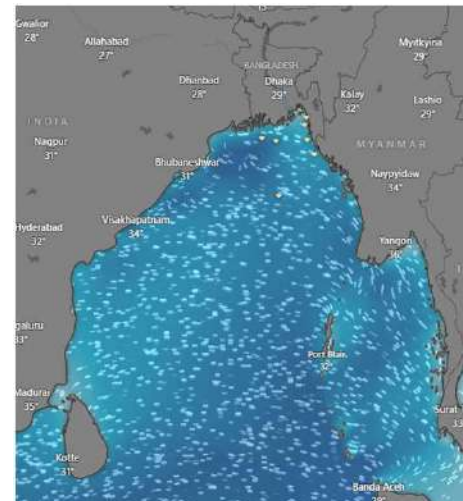
**04 Mar 2025**



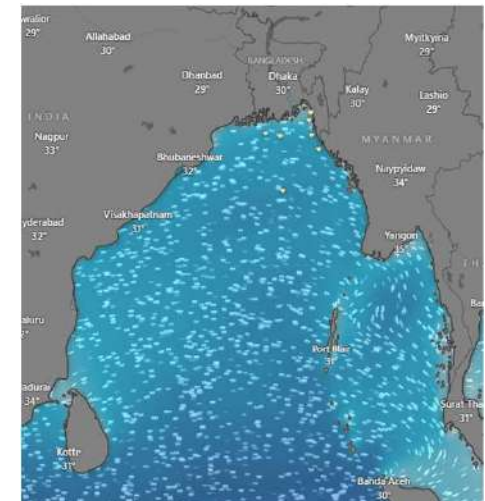
**05 Mar 2025**



**06 Mar 2025**



**07 Mar 2025**



Significant wave height (m)





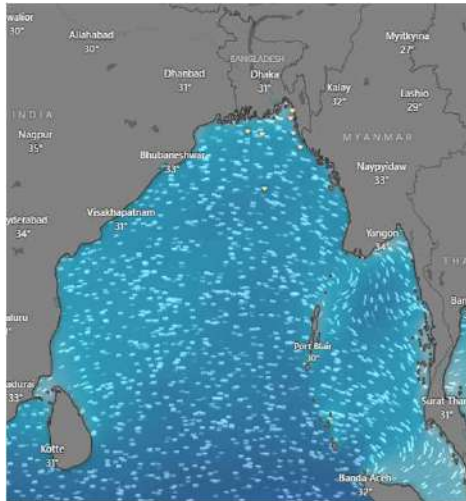
# MARINE WEATHER FORECAST (04 to 11 Mar 2025)

## ABEAM TO ST. MARTIN'S LIGHT HOUSE (20° 37' N, 092° 08' E)

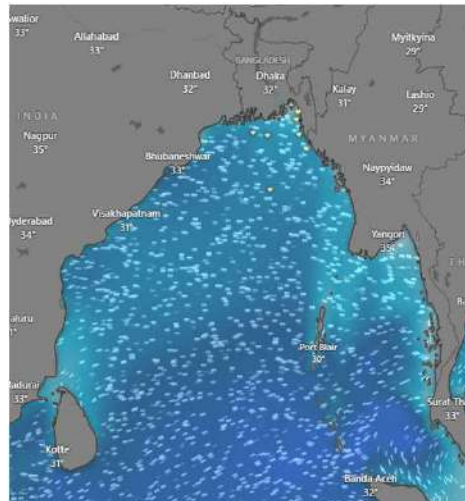


Date	Time	Air Temp (°C)		Sea Surface Temp (°C)	Baro Pressure (mbar)	Wind Direction	Wind Spd (kts)		Wave Ht (m)	Sea State	Humidity (%)	Prob of Rain (%)	Amount of Rain (mm)
		Max	Min				Gusting	Avg					
08-03-25 (Saturday)	0001	30	21	24	1011	NNW	11	6	0.6	3	79	6	0.0
	0600			23	1013	NNE	8	4	0.5	2	82	8	0.0
	1200			27	1010	SW	6	4	0.5	2	52	3	0.0
	1800			25	1012	SW	13	10	0.5	2	70	7	0.0
09-03-25 (Sunday)	0001	30	21	24	1011	W	12	5	0.5	2	88	6	0.0
	0600			23	1013	SSE	8	5	0.5	2	93	7	0.0
	1200			27	1010	SW	5	3	0.6	3	58	3	0.0
	1800			25	1012	W	14	11	0.6	3	74	5	0.0
10-03-25 (Monday)	0001	30	21	24	1011	NNW	12	4	0.7	3	90	7	0.0
	0600			23	1013	NNE	9	6	0.7	3	87	9	0.0
	1200			27	1010	NW	11	9	0.7	3	52	5	0.0
	1800			25	1012	NW	17	12	0.7	3	71	7	0.0
11-03-25 (Tuesday)	0001	30	21	24	1011	NNW	10	7	0.6	3	82	8	0.0
	0600			23	1013	NNW	9	5	0.6	3	81	9	0.0
	1200			27	1010	NW	10	8	0.6	3	58	4	0.0
	1800			25	1012	W	12	8	0.6	3	73	6	0.0

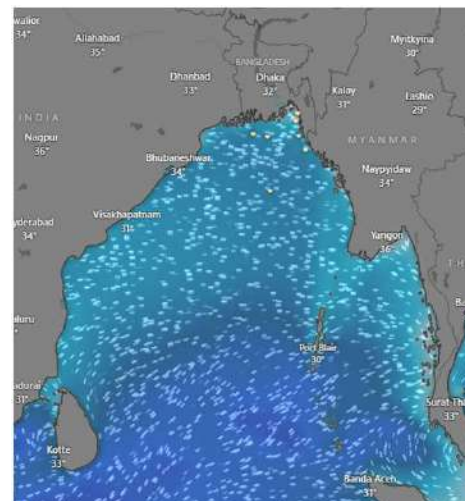
**08 Mar 2025**



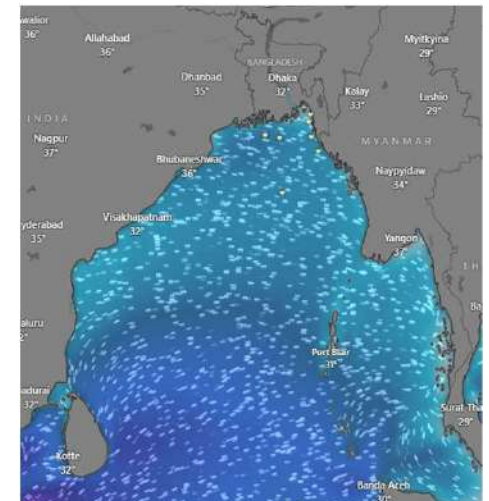
**09 Mar 2025**



**10 Mar 2025**



**11 Mar 2025**



Significant wave height (m)



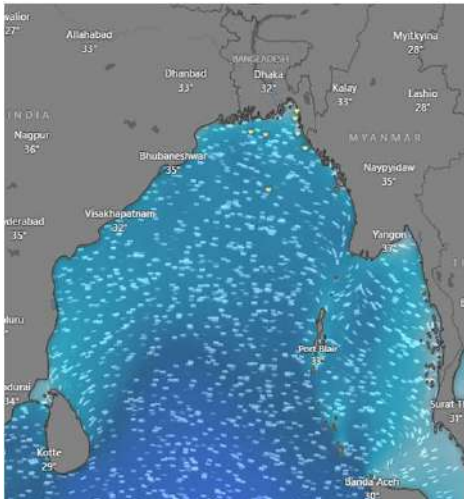
# MARINE WEATHER FORECAST (04 to 11 Mar 2025)

## PAYRA FAIRWAY (21° 22' N, 090° 6' E)

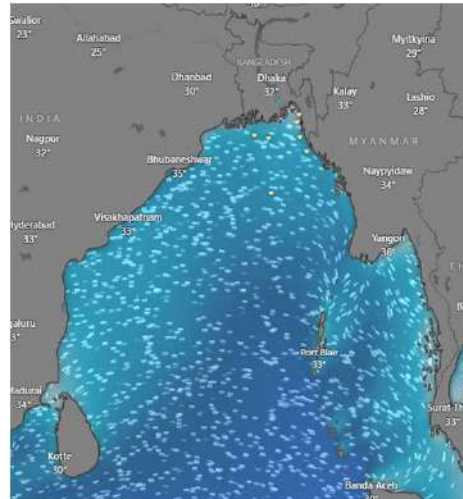


Date	Time	Air Temp (°C)		Sea Surface Temp (°C)	Baro Pressure (mbar)	Wind Direction	Wind Spd (kts)		Wave Ht (m)	Sea State	Humidity (%)	Prob of Rain (%)	Amount of Rain (mm)
		Max	Min				Gusting	Avg					
04-03-25 (Tuesday)	0001	30	20	24	1011	SSW	9	5	0.6	3	94	7	0.0
	0600			23	1013	W	7	4	0.6	3	96	8	0.0
	1200			26	1010	SSW	12	8	0.6	3	52	3	0.0
	1800			25	1012	SSW	8	6	0.6	3	76	6	0.0
05-03-25 (Wednesday)	0001	30	20	24	1011	SSW	6	4	0.5	2	84	7	0.0
	0600			23	1013	SW	11	6	0.6	3	93	9	0.0
	1200			26	1010	SSW	12	9	0.6	3	54	3	0.0
	1800			25	1012	SSW	16	12	0.7	3	76	6	0.0
06-03-25 (Thursday)	0001	30	20	24	1011	SW	14	9	0.7	3	91	6	0.0
	0600			23	1013	NW	12	7	0.8	3	93	8	0.0
	1200			26	1010	NNE	17	10	0.7	3	55	3	0.0
	1800			25	1012	N	8	3	0.7	3	76	7	0.0
07-03-25 (Friday)	0001	30	20	24	1011	NNW	12	9	0.7	3	83	7	0.0
	0600			23	1013	NNE	14	6	0.6	3	88	9	0.0
	1200			26	1010	NNW	6	3	0.6	3	52	3	0.0
	1800			25	1012	SSW	13	10	0.6	3	67	6	0.0

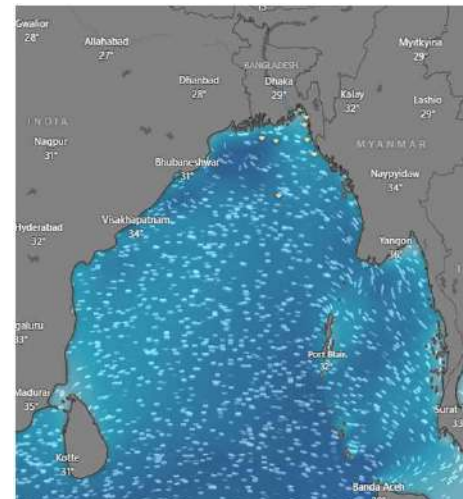
**04 Mar 2025**



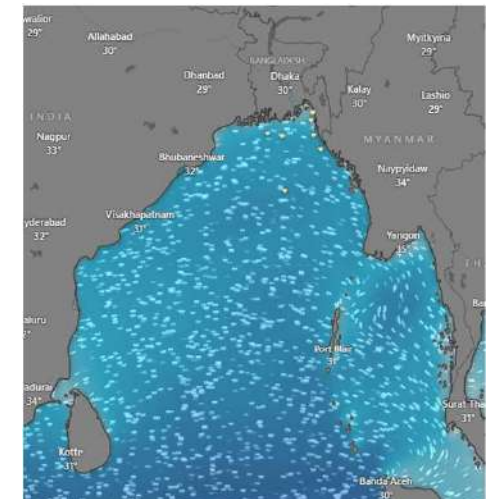
**05 Mar 2025**



**06 Mar 2025**



**07 Mar 2025**



Significant wave height (m)





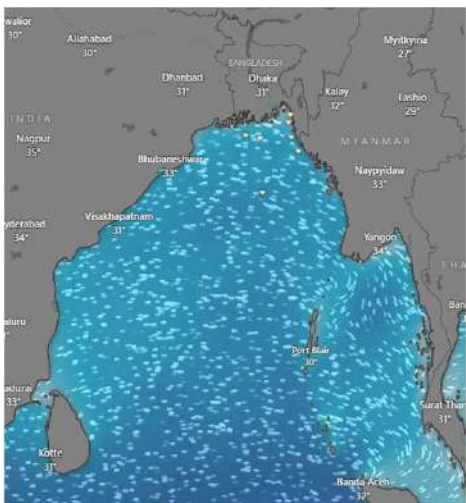
# MARINE WEATHER FORECAST (04 to 11 Mar 2025)

## PAYRA FAIRWAY (21° 22' N, 090° 6' E)

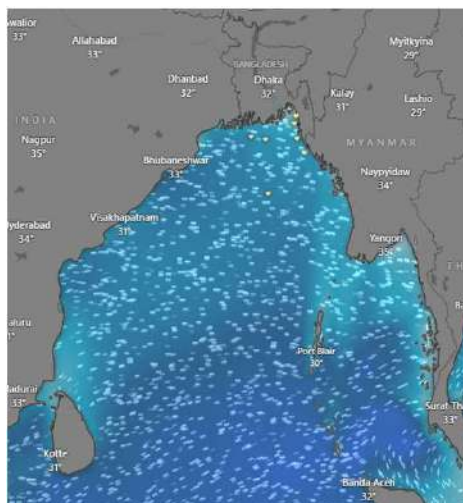


Date	Time	Air Temp (°C)		Sea Surface Temp (°C)	Baro Pressure (mbar)	Wind Direction	Wind Spd (kts)		Wave Ht (m)	Sea State	Humidity (%)	Prob of Rain (%)	Amount of Rain (mm)
		Max	Min				Gusting	Avg					
08-03-25 (Saturday)	0001	30	20	24	1011	SW	13	9	0.6	3	72	8	0.0
	0600			23	1013	NNW	9	8	0.6	3	88	9	0.0
	1200			26	1010	N	7	6	0.5	2	53	3	0.0
	1800			25	1012	SW	10	7	0.6	3	76	7	0.0
09-03-25 (Sunday)	0001	30	20	24	1011	SSW	14	7	0.7	3	88	7	0.0
	0600			23	1013	SW	11	5	0.7	3	93	9	0.0
	1200			26	1010	SSW	12	7	0.8	3	58	3	0.0
	1800			25	1012	SW	11	8	0.8	3	74	6	0.0
10-03-25 (Monday)	0001	30	20	24	1011	SSW	11	7	0.7	3	87	6	0.0
	0600			23	1013	SW	10	8	0.7	3	90	9	0.0
	1200			26	1010	S	9	6	0.7	3	54	5	0.0
	1800			25	1012	S	12	7	0.7	3	73	7	0.0
11-03-25 (Tuesday)	0001	30	20	24	1011	SSW	10	5	0.8	3	82	6	0.0
	0600			23	1013	W	9	6	0.7	3	86	9	0.0
	1200			26	1010	SW	11	8	0.7	3	54	5	0.0
	1800			25	1012	SSW	12	7	0.8	3	73	7	0.0

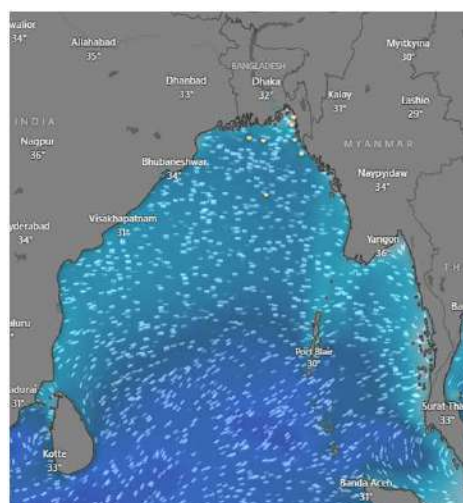
**08 Mar 2025**



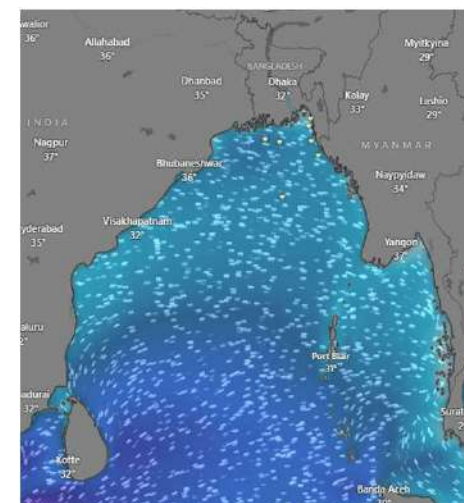
**09 Mar 2025**



**10 Mar 2025**



**11 Mar 2025**



Significant wave height (m)

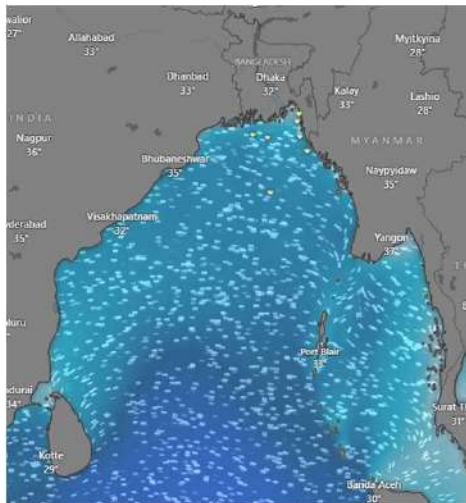


## MARINE WEATHER FORECAST (04 to 11 Mar 2025) MONGLA FAIRWAY (21° 26' N, 089° 34' E)

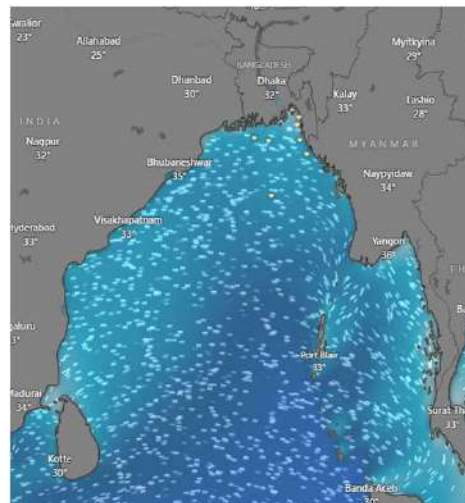


Date	Time	Air Temp (°C)		Sea Surface Temp (°C)	Baro Pressure (mbar)	Wind Direction	Wind Spd (kts)		Wave Ht (m)	Sea State	Humidity (%)	Prob of Rain (%)	Amount of Rain (mm)
		Max	Min				Gusting	Avg					
04-03-25 (Tuesday)	0001	30	19	23	1011	SSW	8	5	0.6	3	94	7	0.0
	0600			22	1013	SW	9	6	0.6	3	97	9	0.0
	1200			26	1010	NNE	14	9	0.6	3	52	3	0.0
	1800			24	1012	S	11	8	0.6	3	76	6	0.0
05-03-25 (Wednesday)	0001	30	19	23	1011	SSW	8	4	0.6	3	82	8	0.0
	0600			22	1013	SW	12	9	0.7	3	93	9	0.0
	1200			26	1010	W	11	9	0.7	3	54	5	0.0
	1800			24	1012	SW	15	10	0.7	3	76	7	0.0
06-03-25 (Thursday)	0001	30	19	23	1011	SW	13	10	0.8	3	91	7	0.0
	0600			22	1013	NW	16	12	0.8	3	93	9	0.0
	1200			26	1010	NE	17	9	0.9	3	55	5	0.0
	1800			24	1012	S	7	4	0.8	3	76	7	0.0
07-03-25 (Friday)	0001	30	19	23	1011	NNW	14	10	0.8	3	81	7	0.0
	0600			22	1013	NNE	10	5	0.6	3	85	9	0.0
	1200			26	1010	W	6	3	0.6	3	53	5	0.0
	1800			24	1012	SSW	15	11	0.7	3	64	7	0.0

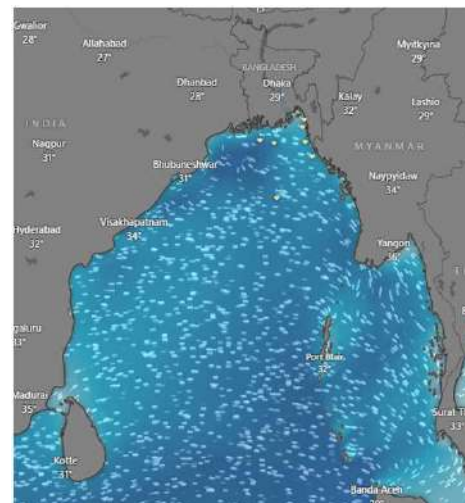
**04 Mar 2025**



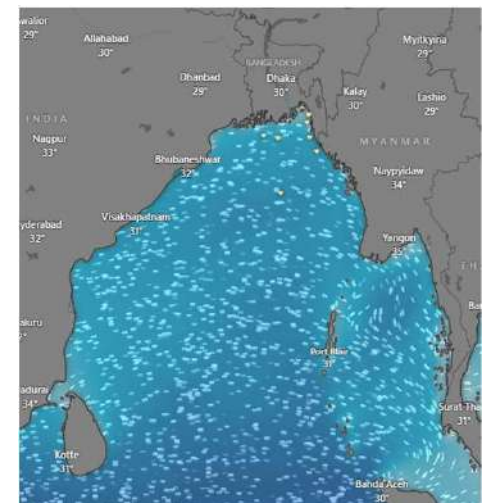
**05 Mar 2025**



**06 Mar 2025**



**07 Mar 2025**



Significant wave height (m)





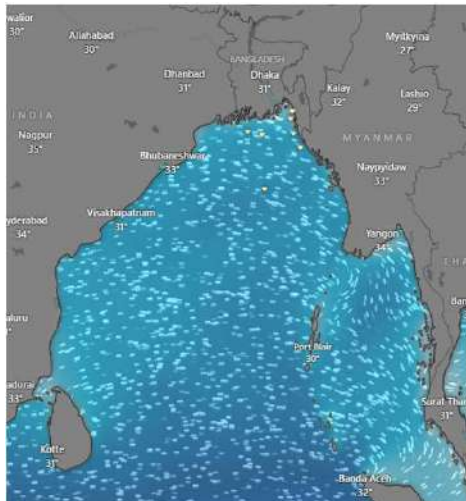
# MARINE WEATHER FORECAST (04 to 11 Mar 2025)

## MONGLA FAIRWAY (21° 26' N, 089° 34' E)

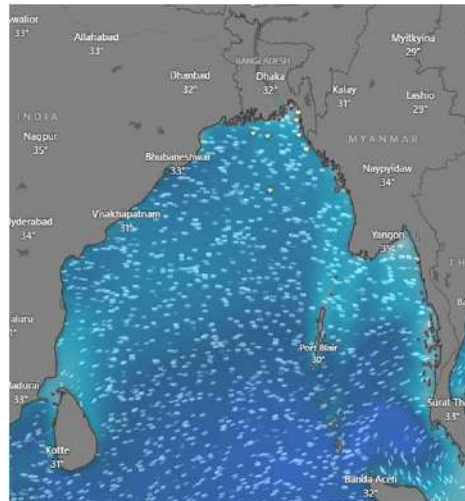


Date	Time	Air Temp (°C)		Sea Surface Temp (°C)	Baro Pressure (mbar)	Wind Direction	Wind Spd (kts)		Wave Ht (m)	Sea State	Humidity (%)	Prob of Rain (%)	Amount of Rain (mm)
		Max	Min				Gusting	Avg					
08-03-25 (Saturday)	0001	30	19	24	1011	SSW	12	10	0.6	3	79	7	0.0
	0600			23	1013	NW	14	8	0.6	3	86	9	0.0
	1200			27	1010	NNE	11	7	0.5	3	54	5	0.0
	1800			25	1012	SSW	13	9	0.6	3	78	6	0.0
09-03-25 (Sunday)	0001	30	19	24	1011	SSW	15	12	0.8	3	88	6	0.0
	0600			23	1013	NNW	16	10	0.8	3	93	8	0.0
	1200			27	1010	SSW	9	5	0.9	3	58	3	0.0
	1800			25	1012	SW	12	9	0.8	3	74	7	0.0
10-03-25 (Monday)	0001	30	19	24	1011	S	13	9	0.8	3	87	6	0.0
	0600			23	1013	W	8	5	0.8	3	90	8	0.0
	1200			27	1010	S	9	4	0.7	3	54	3	0.0
	1800			25	1012	SW	9	6	0.7	3	73	7	0.0
11-03-25 (Tuesday)	0001	30	19	24	1011	SSW	12	9	0.7	3	82	5	0.0
	0600			23	1013	W	15	10	0.8	3	88	8	0.0
	1200			27	1010	SW	8	5	0.7	3	51	3	0.0
	1800			25	1012	SSW	10	7	0.8	3	76	6	0.0

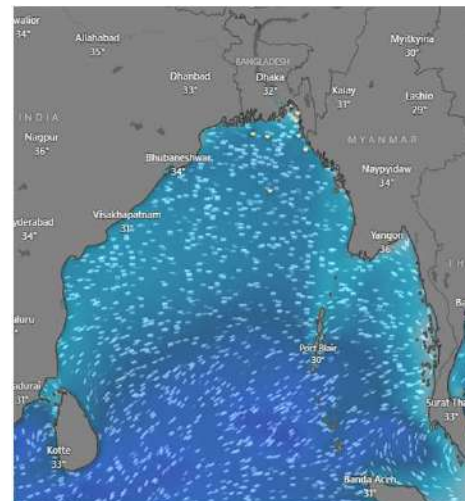
**08 Mar 2025**



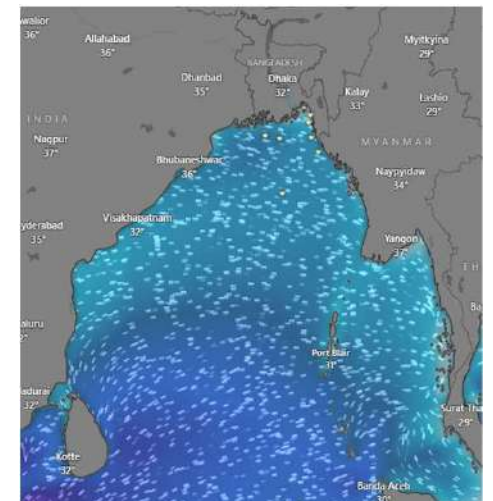
**09 Mar 2025**



**10 Mar 2025**



**11 Mar 2025**



Significant wave height (m)

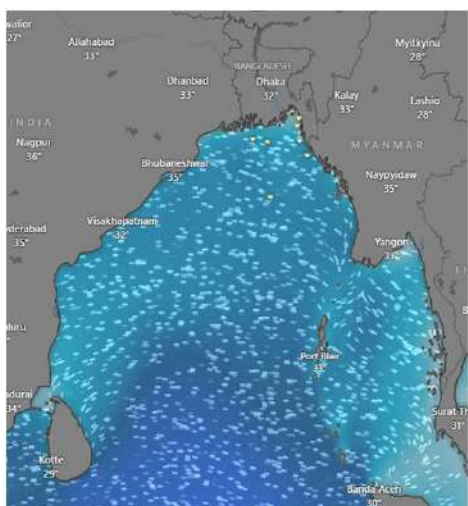


## MARINE WEATHER FORECAST (04 to 11 Mar 2025) OUTER EEZ (18° 48' N, 090° 30' E)

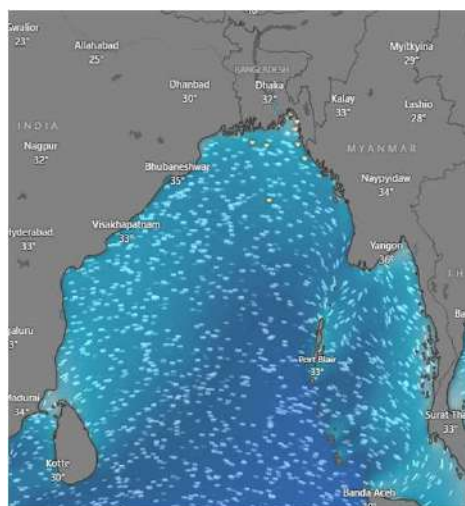


Date	Time	Air Temp (°C)		Sea Surface Temp (°C)	Baro Pressure (mbar)	Wind Direction	Wind Spd (kts)		Wave Ht (m)	Sea State	Humidity (%)	Prob of Rain (%)	Amount of Rain (mm)
		Max	Min				Gusting	Avg					
04-03-25 (Tuesday)	0001	30	21	24	1011	W	8	7	0.7	3	94	6	0.0
	0600			23	1013	W	11	8	0.7	3	95	8	0.0
	1200			27	1010	NNW	12	5	0.8	3	52	2	0.0
	1800			25	1012	N	14	8	0.8	3	75	5	0.0
05-03-25 (Wednesday)	0001	30	21	24	1011	NW	8	6	0.7	3	82	7	0.0
	0600			23	1013	NW	12	7	0.8	3	93	8	0.0
	1200			27	1010	NW	10	5	0.7	3	54	3	0.0
	1800			25	1012	NW	12	8	0.8	3	76	6	0.0
06-03-25 (Thursday)	0001	30	21	24	1011	SSW	9	5	0.7	3	91	8	0.0
	0600			23	1013	SSW	11	9	0.8	3	93	9	0.0
	1200			27	1010	W	12	9	0.8	3	55	5	0.0
	1800			25	1012	W	12	7	0.8	3	76	7	0.0
07-03-25 (Friday)	0001	30	21	24	1011	SW	9	6	0.8	3	83	8	0.0
	0600			23	1013	SSW	11	7	0.8	3	87	9	0.0
	1200			27	1010	SW	12	8	0.8	3	52	5	0.0
	1800			25	1012	SW	9	6	0.7	3	64	7	0.0

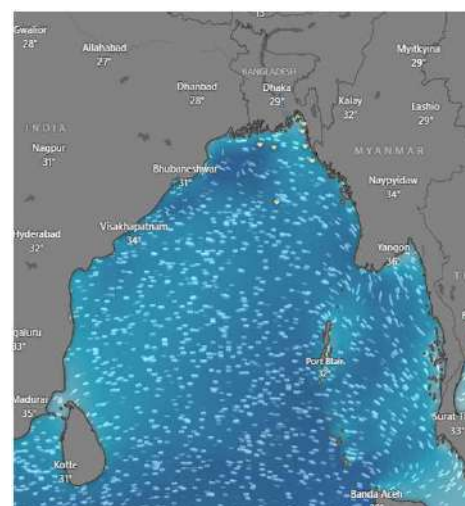
**04 Mar 2025**



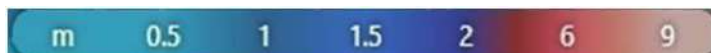
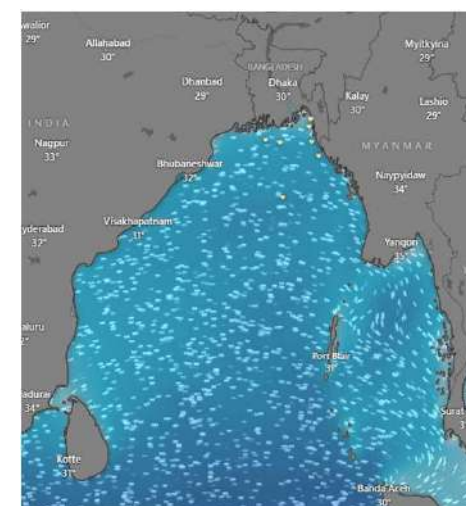
**05 Mar 2025**



**06 Mar 2025**



**07 Mar 2025**



Significant wave height (m)





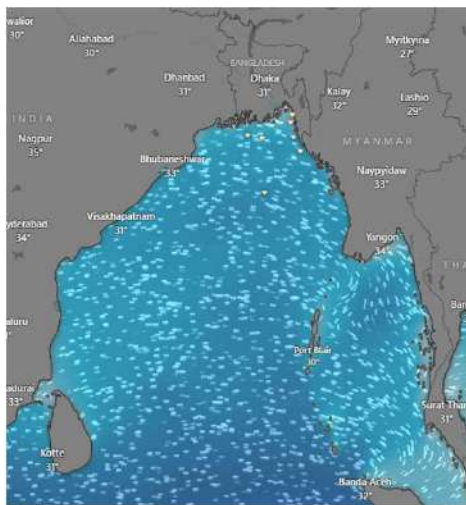
# MARINE WEATHER FORECAST (04 to 11 Mar 2025)

## OUTER EEZ (18° 48' N, 090° 30' E)

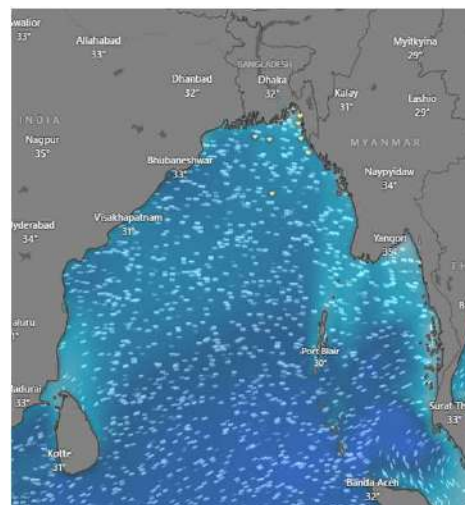


Date	Time	Air Temp (°C)		Sea Surface Temp (°C)	Baro Pressure (mbar)	Wind Direction	Wind Spd (kts)		Wave Ht (m)	Sea State	Humidity (%)	Prob of Rain (%)	Amount of Rain (mm)
		Max	Min				Gusting	Avg					
08-03-25 (Saturday)	0001	30	21	25	1011	SSW	10	8	0.8	3	78	8	0.0
	0600			24	1013	SSW	12	7	0.9	3	87	9	0.0
	1200			27	1010	SW	17	10	0.9	3	53	3	0.0
	1800			26	1012	NNE	13	9	0.8	3	72	5	0.0
09-03-25 (Sunday)	0001	30	21	25	1011	W	13	9	0.8	3	88	8	0.0
	0600			24	1013	S	10	7	0.9	3	93	9	0.0
	1200			27	1010	SW	14	8	0.8	3	58	5	0.0
	1800			26	1012	W	12	7	0.9	3	74	7	0.0
10-03-25 (Monday)	0001	30	21	25	1011	SSW	12	9	0.8	3	89	8	0.0
	0600			24	1013	SSE	10	6	0.9	3	91	9	0.0
	1200			27	1010	SW	13	7	0.8	3	54	5	0.0
	1800			26	1012	NW	14	9	0.8	3	73	6	0.0
11-03-25 (Tuesday)	0001	30	21	25	1011	SSW	12	8	0.9	3	84	6	0.0
	0600			24	1013	SSE	12	9	0.9	3	86	8	0.0
	1200			27	1010	SW	9	6	0.7	3	52	3	0.0
	1800			26	1012	W	12	7	0.8	3	74	7	0.0

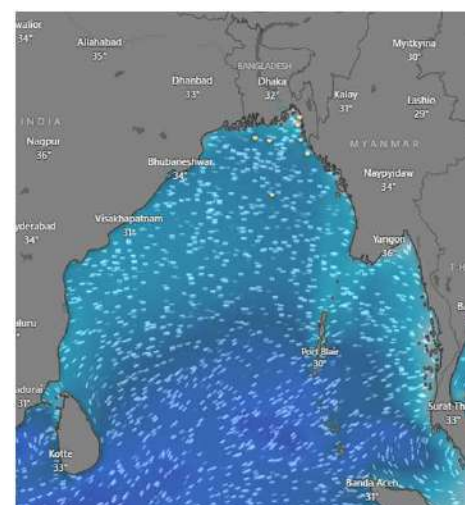
**08 Mar 2025**



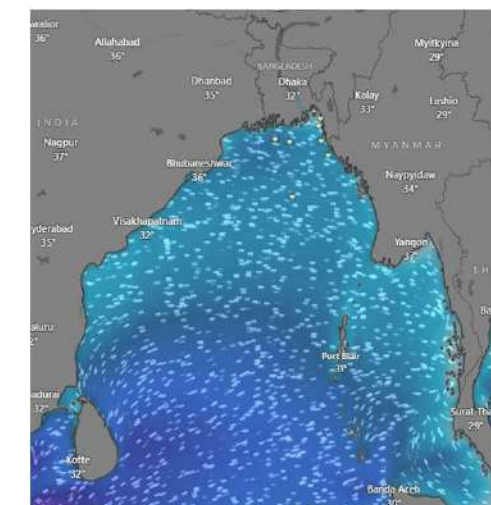
**09 Mar 2025**



**10 Mar 2025**



**11 Mar 2025**



Significant wave height (m)



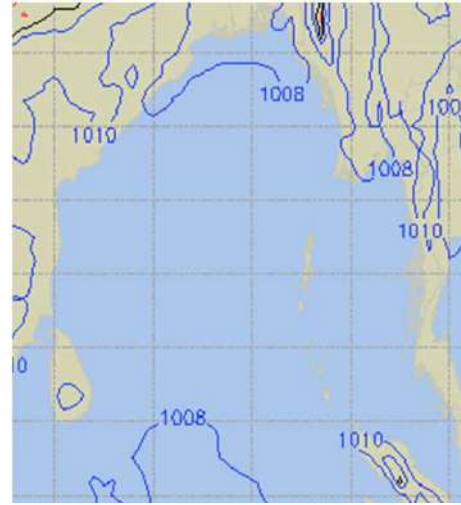
# PREDICTED SURFACE PRESSURE FORECAST (04 to 10 Mar 2025)



**04 Mar 2025**



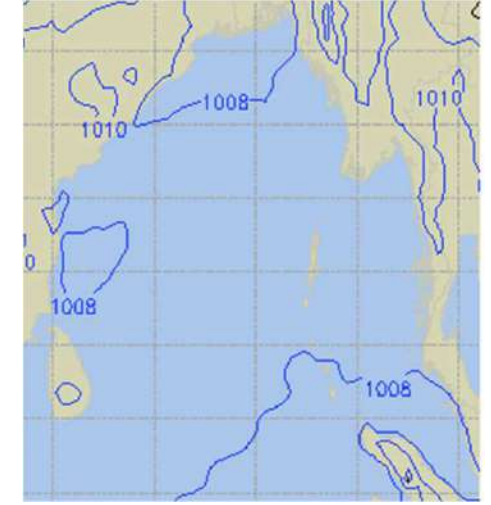
**05 Mar 2025**



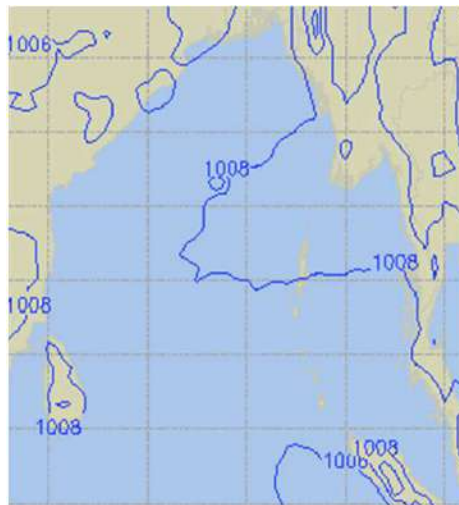
**06 Mar 2025**



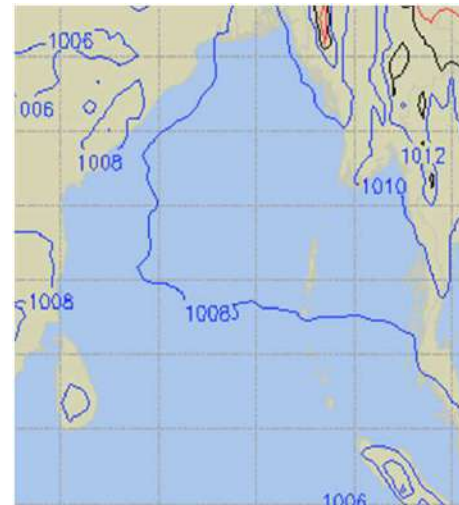
**07 Mar 2025**



**08 Mar 2025**



**09 Mar 2025**



**10 Mar 2025**

