



SUMMARY OF MARINE WEATHER FORECAST
COASTAL AREA OF BANGLADESH
DATE: 03 to 10 Dec 2024



Fleet forecast	Seasonal low lies over south Bay. extending its trough up to North Bay
Wind direction, speed	North/North-westerly 11 kts, (Temporary gusting up to 22 kts).
Wave height & sea state	Wave height: 0.1 to 1.5 m (Sea state:1 to 4).
Sea surface temperature	19°C - 27°C (May remain nearly unchanged).
Baro pressure	1009-1014 mb
Rainfall	Partly cloudy sky over Bay of Bengal & adjoining area.
Fog	Light to moderate fog may occur at places over the coastal area during late night till early morning.

Outlook for 03 to 10 Dec 2024: Weather may remain mainly dry with temporary partly cloudy sky.

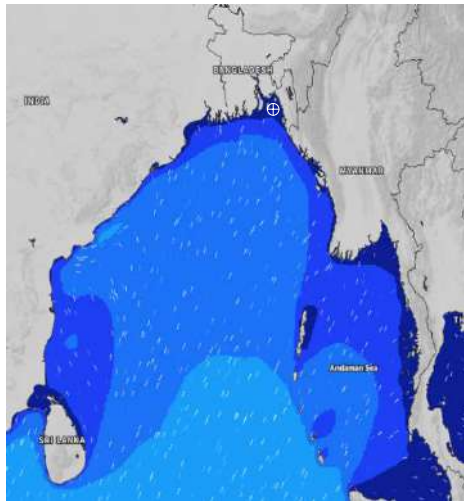


MARINE WEATHER FORECAST (03 Dec to 10 Dec 2024) NEAR AUTHORITY BUOY (22° 12' N, 091° 38' E)

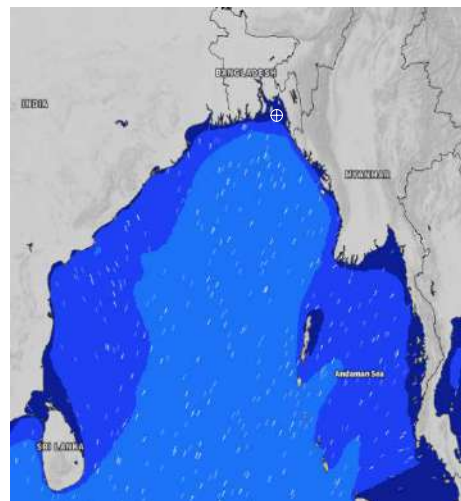


Date	Time	Air Temp (°C)		Sea Surface Temp (°C)	Baro Pressure (mbar)	Wind Direction	Wind Spd (kts)		Wave Ht (m)	Sea State	Humidity (%)	Prob of Rain
		Max	Min				Max	Avg				
03-12-24 (Tuesday)	0001	30	19	24	1011	N	9	8	0.2	2	72	10% (0.0 mm)
	0600			23	1012	NNW	10	9	0.2	2	77	11% (0.0 mm)
	1200			24	1012	NW	9	8	0.2	2	52	10% (0.0 mm)
	1800			26	1010	NW	14	9	0.2	2	64	10% (0.0 mm)
04-12-24 (Wednesday)	0001	30	17	23	1012	N	14	11	0.3	2	79	10% (0.0 mm)
	0600			21	1012	NNE	14	11	0.3	2	85	11% (0.0 mm)
	1200			25	1011	NNW	13	11	0.3	2	52	13% (0.0 mm)
	1800			26	1010	NNW	16	12	0.3	2	64	11% (0.0 mm)
05-12-24 (Thursday)	0001	29	17	22	1011	NNE	14	11	0.3	2	79	10% (0.0 mm)
	0600			19	1012	NNE	11	9	0.3	2	85	11% (0.0 mm)
	1200			25	1012	N	12	11	0.2	2	52	10% (0.0 mm)
	1800			25	1010	NE	14	13	0.2	2	64	12% (0.0 mm)
06-12-24 (Friday)	0001	28	16	21	1011	NNE	10	9	0.2	2	79	10% (0.0 mm)
	0600			19	1011	NE	10	9	0.2	2	85	11% (0.0 mm)
	1200			23	1012	NE	9	8	0.1	1	52	10% (0.0 mm)
	1800			24	1010	NE	12	11	0.3	2	64	12% (0.0 mm)

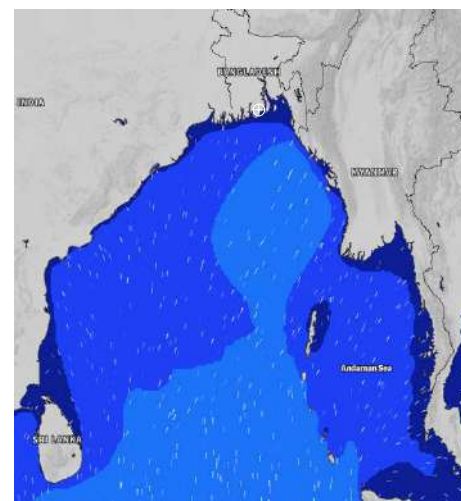
03 Dec 2024



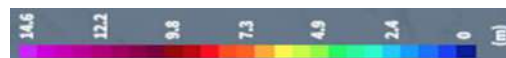
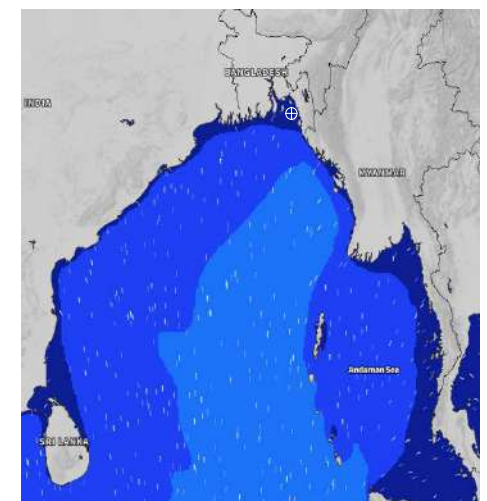
04 Dec 2024



05 Dec 2024



06 Dec 2024



Significant wave height (m)

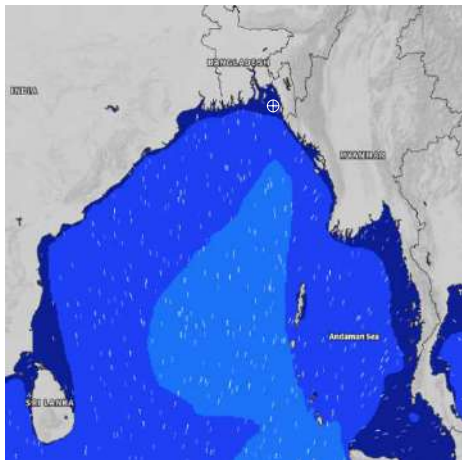


MARINE WEATHER FORECAST (03 Dec to 10 Dec 2024) NEAR AUTHORITY BUOY (22° 12' N, 091° 38' E)

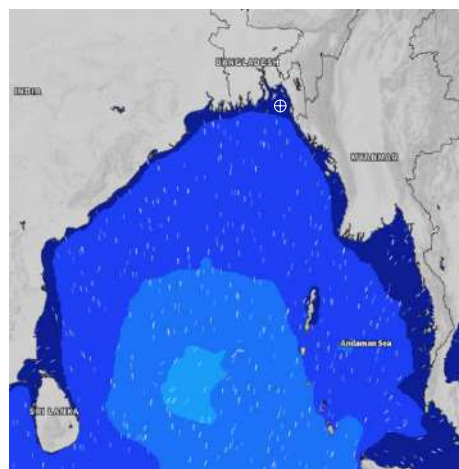


Date	Time	Air Temp (°C)		Sea Surface Temp (°C)	Baro Pressure (mbar)	Wind Direction	Wind Spd (kts)		Wave Ht (m)	Sea State	Humidity (%)	Prob of Rain
		Max	Min				Max	Avg				
07-12-24 (Saturday)	0001	27	15	20	1011	NW	10	9	0.3	2	90	10% (0.0 mm)
	0600			19	1011	NW	8	7	0.2	2	89	12% (0.0 mm)
	1200			23	1012	NW	8	7	0.1	1	72	10% (0.0 mm)
	1800			23	1010	NNW	13	12	0.3	2	80	13% (0.0 mm)
08-12-24 (Sunday)	0001	27	16	20	1012	N	9	8	0.1	1	91	10% (0.0 mm)
	0600			19	1012	NW	8	7	0.1	1	91	11% (0.0 mm)
	1200			23	1012	N	7	6	0.1	1	70	10% (0.0 mm)
	1800			24	1011	N	8	7	0.1	1	81	11% (0.0 mm)
09-12-24 (Monday)	0001	28	17	20	1012	NE	9	8	0.1	1	91	14% (0.0 mm)
	0600			19	1013	NE	9	8	0.1	1	91	11% (0.0 mm)
	1200			24	1014	NE	8	7	0.1	1	70	10% (0.0 mm)
	1800			24	1012	N	7	6	0.1	1	81	12% (0.0 mm)
10-12-24 (Tuesday)	0001	28	17	21	1013	NE	7	6	0.1	1	91	14% (0.0 mm)
	0600			20	1013	NE	9	8	0.1	1	91	11% (0.0 mm)
	1200			24	1012	NE	9	8	0.1	1	70	10% (0.0 mm)
	1800			25	1012	N	14	12	0.3	2	81	12% (0.0 mm)

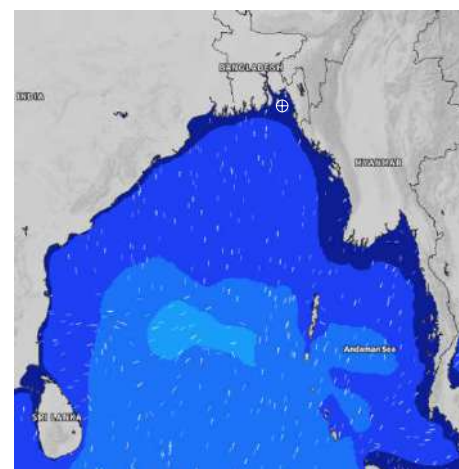
07 Dec 2024



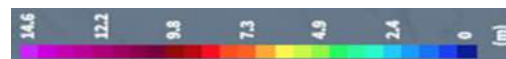
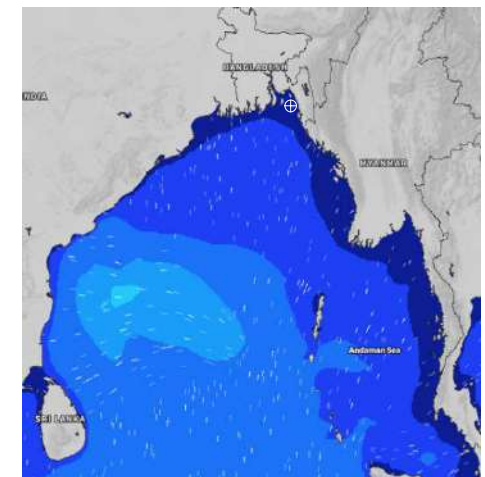
08 Dec 2024



09 Dec 2024



10 Dec 2024



Significant wave height (m)



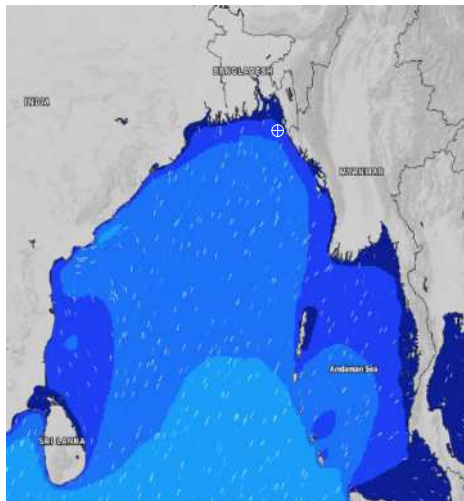
MARINE WEATHER FORECAST (03 Dec to 10 Dec 2024)

20 NM WEST OF ELEPHANT POINT (21° 10' N, 091° 42' E)

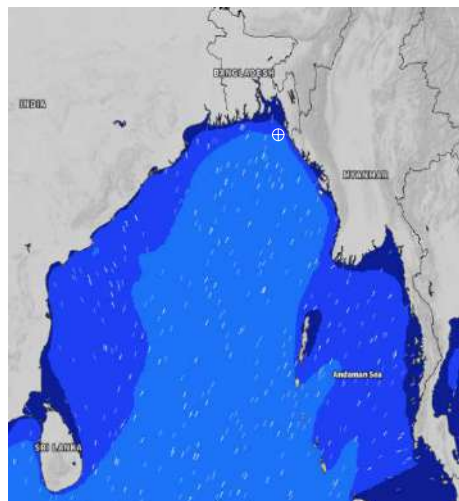


Date	Time	Air Temp (°C)		Sea Surface Temp (°C)	Baro Pressure (mbar)	Wind Direction	Wind Spd (kts)		Wave Ht (m)	Sea State	Humidity (%)	Prob of Rain
		Max	Min				Max	Avg				
03-12-24 (Tuesday)	0001	29	21	27	1011	N	14	12	0.9	3	76	14% (0.0 mm)
	0600			26	1011	N	16	15	1.0	3	74	10% (0.0 mm)
	1200			26	1012	NNW	13	12	0.9	3	56	12% (0.0 mm)
	1800			26	1010	NNW	16	15	1.0	3	68	13% (0.0 mm)
04-12-24 (Wednesday)	0001	30	19	27	1011	N	15	14	1.0	3	80	12% (0.0 mm)
	0600			25	1011	N	19	18	1.1	3	84	14% (0.0 mm)
	1200			25	1011	N	19	18	1.1	3	52	11% (0.0 mm)
	1800			25	1010	NNW	19	18	1.2	3	71	13% (0.0 mm)
05-12-24 (Thursday)	0001	29	18	26	1011	N	18	16	1.1	3	81	12% (0.0 mm)
	0600			24	1011	N	18	16	1.0	3	84	14% (0.0 mm)
	1200			25	1012	NNW	18	16	1.0	3	56	12% (0.0 mm)
	1800			26	1010	NNW	18	17	1.0	3	72	10% (0.0 mm)
06-12-24 (Friday)	0001	28	16	26	1011	N	15	14	0.9	3	81	12% (0.0 mm)
	0600			23	1011	N	15	14	0.8	3	84	14% (0.0 mm)
	1200			24	1011	NE	16	15	0.7	3	56	12% (0.0 mm)
	1800			25	1010	NNE	18	17	0.8	3	72	10% (0.0 mm)

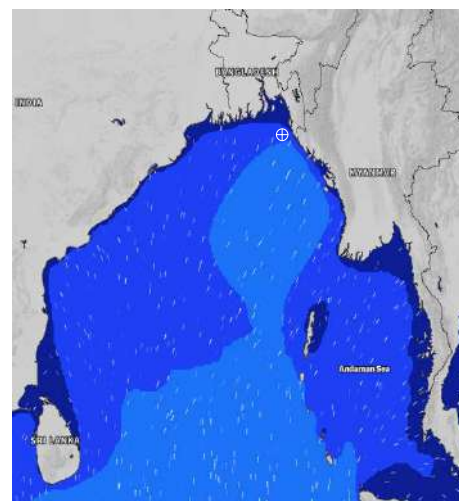
03 Dec 2024



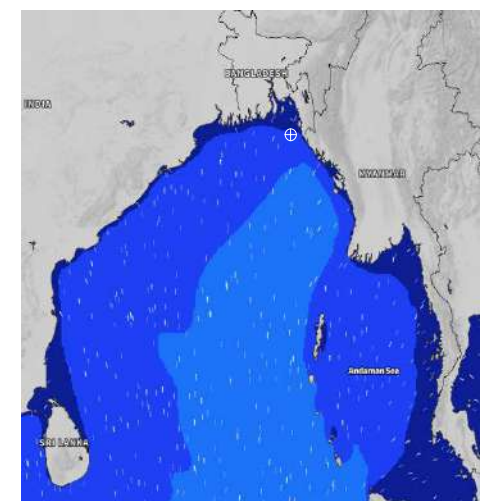
04 Dec 2024



05 Dec 2024



06 Dec 2024



Significant wave height (m)



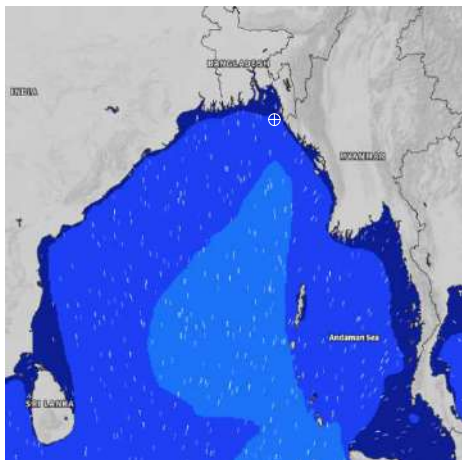
MARINE WEATHER FORECAST (03 Dec to 10 Dec 2024)

20 NM WEST OF ELEPHANT POINT (21° 10' N, 091° 42' E)

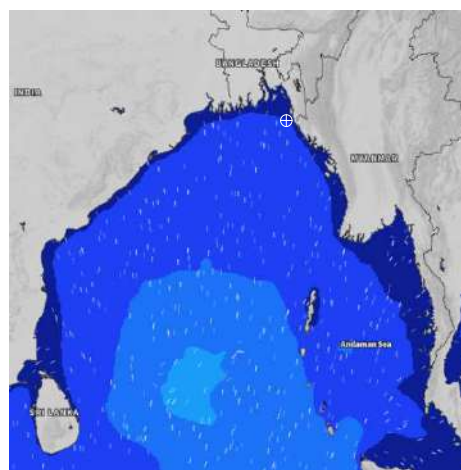


Date	Time	Air Temp (°C)		Sea Surface Temp (°C)	Baro Pressure (mbar)	Wind Direction	Wind Spd (kts)		Wave Ht (m)	Sea State	Humidity (%)	Prob of Rain
		Max	Min				Max	Avg				
07-12-24 (Saturday)	0001	27	16	26	1010	N	13	12	0.8	3	89	10% (0.0 mm)
	0600			23	1011	NNW	13	12	0.7	3	89	12% (0.0 mm)
	1200			24	1011	NNW	13	12	0.7	3	74	10% (0.0 mm)
	1800			25	1010	NE	15	14	0.8	3	79	10% (0.0 mm)
08-12-24 (Sunday)	0001	27	17	25	1012	N	11	10	0.7	3	90	10% (0.0 mm)
	0600			22	1012	NW	14	12	0.7	3	90	11% (0.0 mm)
	1200			24	1012	N	11	10	0.6	3	72	10% (0.0 mm)
	1800			25	1011	N	11	10	0.6	3	82	10% (0.0 mm)
09-12-24 (Monday)	0001	29	18	24	1011	NW	10	9	0.5	2	82	13% (0.0 mm)
	0600			23	1012	N	12	11	0.6	3	91	14% (0.0 mm)
	1200			25	1012	NNW	10	9	0.6	3	70	12% (0.0 mm)
	1800			24	1010	N	14	12	0.6	3	84	13% (0.0 mm)
10-12-24 (Tuesday)	0001	29	18	25	1012	NW	11	10	0.6	3	82	13% (0.0 mm)
	0600			24	1012	N	13	12	0.6	3	91	14% (0.0 mm)
	1200			25	1012	NNW	9	8	0.6	3	70	12% (0.0 mm)
	1800			26	1012	N	15	14	0.8	3	84	13% (0.0 mm)

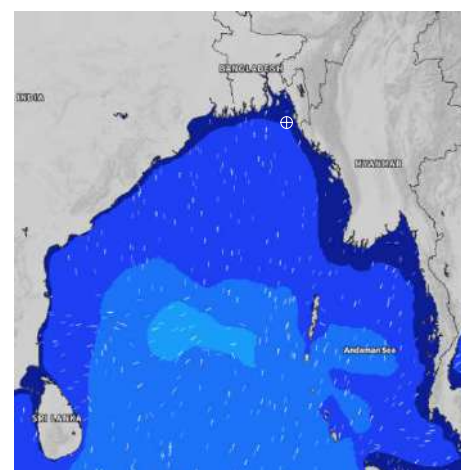
07 Dec 2024



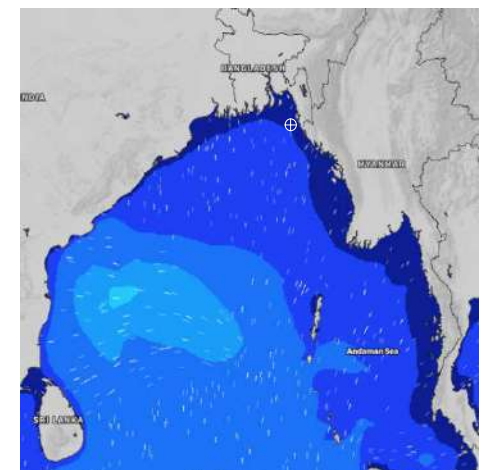
08 Dec 2024



09 Dec 2024



10 Dec 2024



Significant wave height (m)



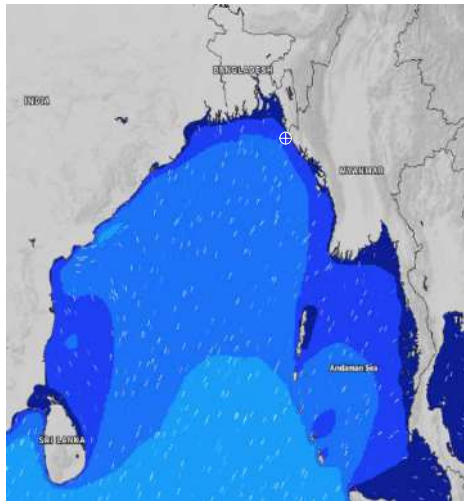
MARINE WEATHER FORECAST (03 Dec to 10 Dec 2024)

15 NM WEST OF ST. MARTIN'S LIGHT HOUSE (20° 37' N, 092° 03' E)

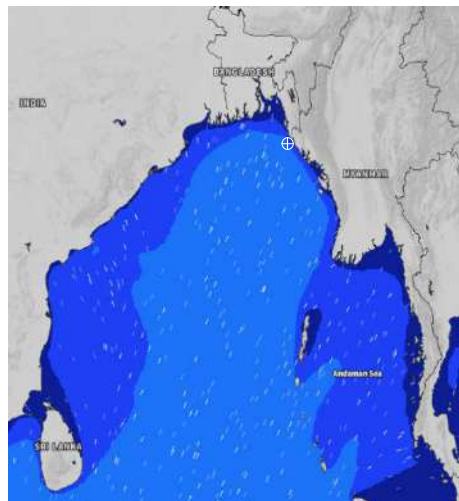


Date	Time	Air Temp (°C)		Sea Surface Temp (°C)	Baro Pressure (mbar)	Wind Direction	Wind Spd (kts)		Wave Ht (m)	Sea State	Humidity (%)	Prob of Rain
		Max	Min				Max	Avg				
03-12-24 (Tuesday)	0001	30	22	27	1011	N	15	13	1.2	3	77	11% (0.0 mm)
	0600			27	1010	N	17	16	1.3	4	80	10% (0.0 mm)
	1200			26	1012	NNW	13	12	1.2	3	54	11% (0.0 mm)
	1800			27	1010	NNW	16	15	1.3	4	67	10% (0.0 mm)
04-12-24 (Wednesday)	0001	31	20	27	1011	NNW	16	15	1.5	4	79	11% (0.0 mm)
	0600			26	1010	N	21	18	1.5	4	80	10% (0.0 mm)
	1200			26	1011	N	18	17	1.5	4	54	11% (0.0 mm)
	1800			27	1009	NNW	22	19	1.5	4	68	10% (0.0 mm)
05-12-24 (Thursday)	0001	30	20	27	1010	N	20	19	1.5	4	81	13% (0.0 mm)
	0600			26	1010	N	21	20	1.5	4	90	12% (0.0 mm)
	1200			26	1010	N	22	20	1.4	4	57	14% (0.0 mm)
	1800			26	1009	N	21	19	1.4	4	67	15% (0.0 mm)
06-12-24 (Friday)	0001	29	18	27	1011	NNW	17	16	1.3	4	81	13% (0.0 mm)
	0600			25	1010	NE	18	17	1.2	3	90	12% (0.0 mm)
	1200			26	1010	NNE	18	17	1.1	3	57	14% (0.0 mm)
	1800			26	1009	NE	21	20	1.2	3	67	15% (0.0 mm)

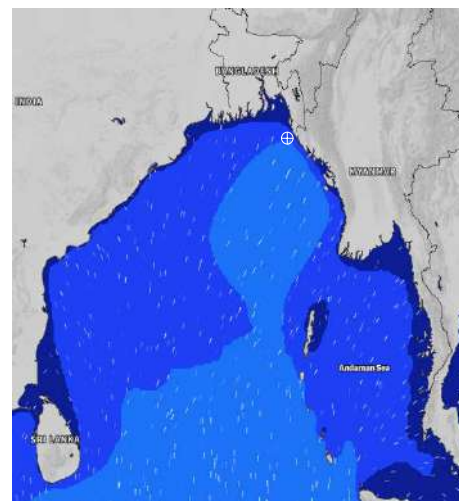
03 Dec 2024



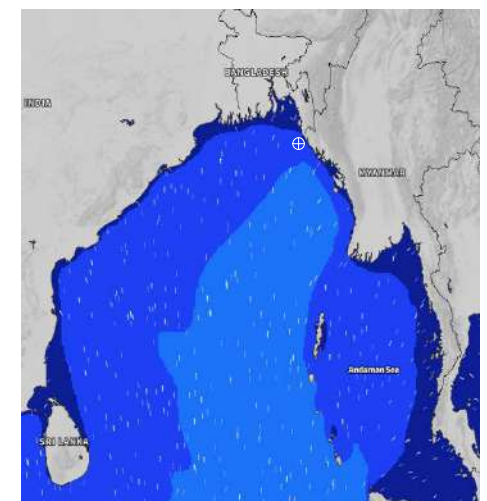
04 Dec 2024



05 Dec 2024



06 Dec 2024



Significant wave height (m)



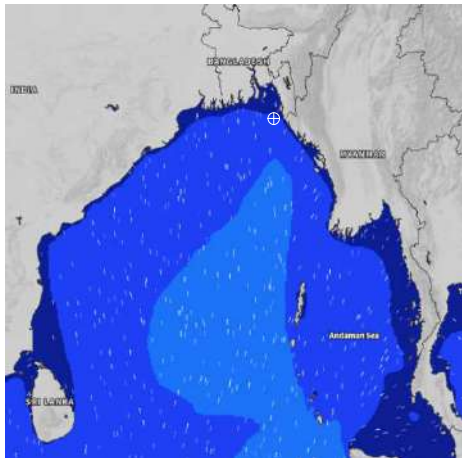
MARINE WEATHER FORECAST (03 Dec to 10 Dec 2024)

15 NM WEST OF ST. MARTIN'S LIGHT HOUSE (20° 37' N, 092° 03' E)

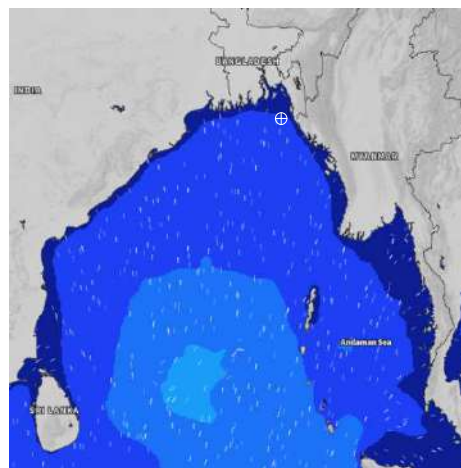


Date	Time	Air Temp (°C)		Sea Surface Temp (°C)	Baro Pressure (mbar)	Wind Direction	Wind Spd (kts)		Wave Ht (m)	Sea State	Humidity (%)	Prob of Rain
		Max	Min				Max	Avg				
07-12-24 (Saturday)	0001	28	17	26	1011	NNW	16	15	1.1	3	86	10% (0.0 mm)
	0600			24	1010	N	16	14	1.0	3	85	13% (0.0 mm)
	1200			24	1013	N	15	14	1.0	3	76	12% (0.0 mm)
	1800			24	1009	NNW	16	15	1.1	3	71	15% (0.0 mm)
08-12-24 (Sunday)	0001	28	18	26	1012	NNW	14	12	1.0	3	86	14% (0.0 mm)
	0600			25	1010	N	14	13	0.9	3	86	12% (0.0 mm)
	1200			24	1013	N	14	13	0.8	3	73	13% (0.0 mm)
	1800			25	1010	NNW	12	11	0.8	3	78	15% (0.0 mm)
09-12-24 (Monday)	0001	29	20	25	1012	NNW	9	8	0.7	3	82	12% (0.0 mm)
	0600			25	1011	NW	9	8	0.7	3	86	14% (0.0 mm)
	1200			24	1014	N	11	10	0.7	3	70	13% (0.0 mm)
	1800			26	1011	NNW	8	7	0.6	3	87	14% (0.0 mm)
10-12-24 (Tuesday)	0001	29	20	26	1013	NNW	11	10	0.7	3	82	12% (0.0 mm)
	0600			25	1011	NW	9	8	0.6	3	86	14% (0.0 mm)
	1200			25	1014	N	8	7	0.6	3	70	13% (0.0 mm)
	1800			26	1011	NNW	8	7	0.6	3	87	14% (0.0 mm)

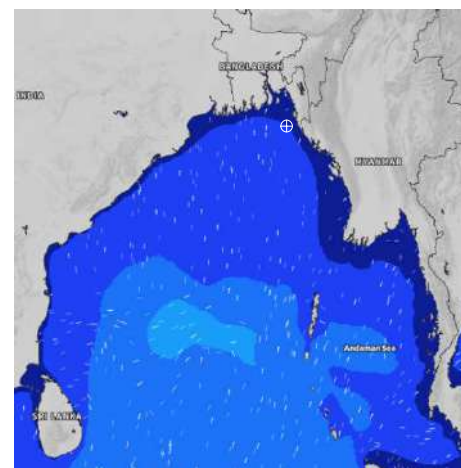
07 Dec 2024



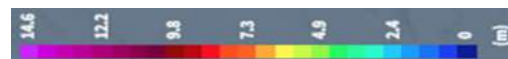
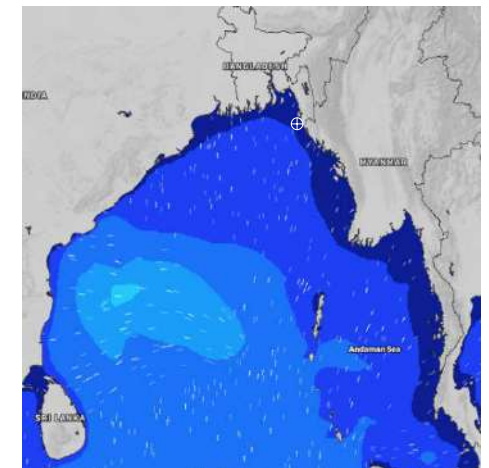
08 Dec 2024



09 Dec 2024



10 Dec 2024



Significant wave height (m)



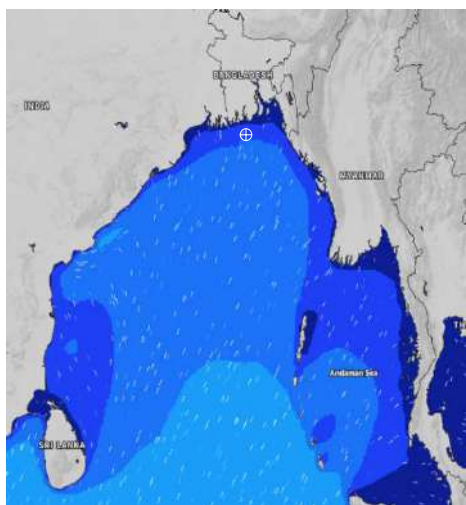
MARINE WEATHER FORECAST (03 Dec to 10 Dec 2024)

40 NM EAST OF PAYRA FAIRWAY (21° 07' N, 090° 45' E)

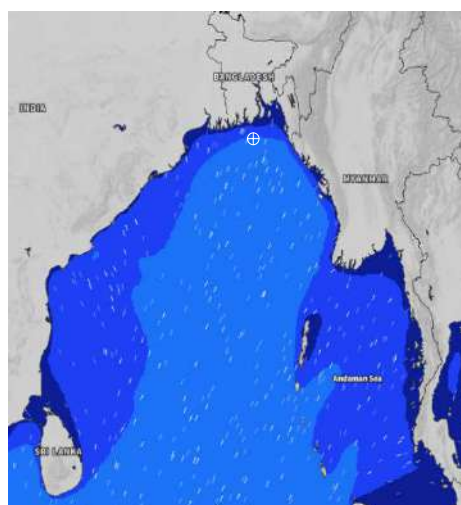


Date	Time	Air Temp (°C)		Sea Surface Temp (°C)	Baro Pressure (mbar)	Wind Direction	Wind Spd (kts)		Wave Ht (m)	Sea State	Humidity (%)	Prob of Rain
		Max	Min				Max	Avg				
03-12-24 (Tuesday)	0001	28	19	26	1011	N	12	11	1.1	3	76	11% (0.0 mm)
	0600			26	1011	N	14	13	1.2	3	76	15% (0.0 mm)
	1200			25	1012	N	12	10	1.2	3	55	12% (0.0 mm)
	1800			26	1011	N	12	10	1.2	3	68	10% (0.0 mm)
04-12-24 (Wednesday)	0001	28	18	26	1012	NW	14	12	1.2	3	81	11% (0.0 mm)
	0600			25	1012	N	18	14	1.3	4	84	12% (0.0 mm)
	1200			26	1012	N	16	14	1.4	4	54	12% (0.0 mm)
	1800			26	1010	N	17	16	1.3	4	65	10% (0.0 mm)
05-12-24 (Thursday)	0001	28	18	26	1011	N	15	14	1.2	3	81	16% (0.0 mm)
	0600			26	1011	N	15	14	1.2	3	86	13% (0.0 mm)
	1200			25	1013	N	14	13	1.1	3	55	15% (0.0 mm)
	1800			26	1010	N	15	14	1.0	3	65	12% (0.0 mm)
06-12-24 (Friday)	0001	27	17	26	1011	NE	12	10	0.9	3	81	16% (0.0 mm)
	0600			25	1011	N	12	10	0.9	3	86	13% (0.0 mm)
	1200			25	1012	N	10	9	0.9	3	55	15% (0.0 mm)
	1800			25	1010	NE	9	8	0.8	3	65	12% (0.0 mm)

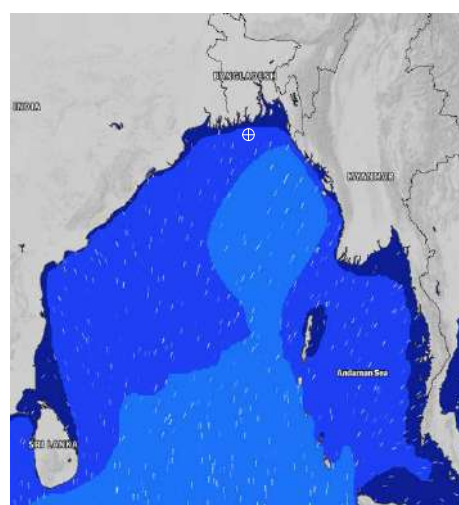
03 Dec 2024



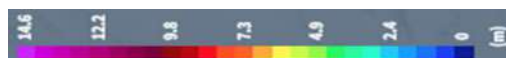
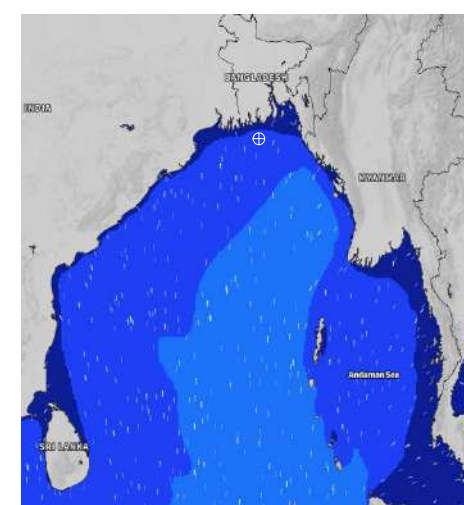
04 Dec 2024



05 Dec 2024



06 Dec 2024



Significant wave height (m)



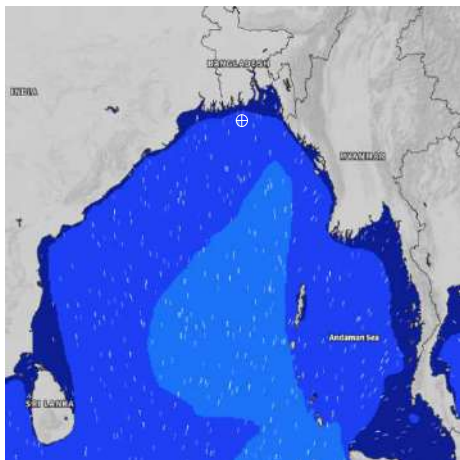
MARINE WEATHER FORECAST (03 Dec to 10 Dec 2024)

40 NM EAST OF PAYRA FAIRWAY (21° 07' N, 090° 45' E)

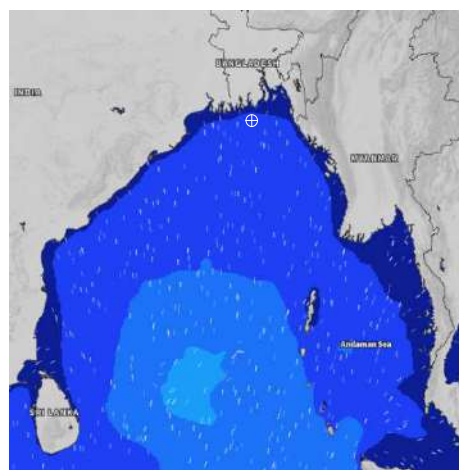


Date	Time	Air Temp (°C)		Sea Surface Temp (°C)	Baro Pressure (mbar)	Wind Direction	Wind Spd (kts)		Wave Ht (m)	Sea State	Humidity (%)	Prob of Rain
		Max	Min				Max	Avg				
07-12-24 (Saturday)	0001	27	16	25	1011	NNW	10	9	0.9	3	88	10% (0.0 mm)
	0600			25	1011	N	11	10	0.9	3	89	12% (0.0 mm)
	1200			24	1012	N	10	9	0.9	3	70	10% (0.0 mm)
	1800			24	1011	NNW	10	9	0.9	3	81	10% (0.0 mm)
08-12-24 (Sunday)	0001	26	18	25	1012	NNW	9	8	0.9	3	90	10% (0.0 mm)
	0600			24	1012	NE	12	11	0.9	3	90	11% (0.0 mm)
	1200			24	1012	NNE	11	10	0.9	3	70	15% (0.0 mm)
	1800			24	1011	N	9	8	0.8	3	79	14% (0.0 mm)
09-12-24 (Monday)	0001	27	19	25	1011	NNW	11	10	0.7	3	88	13% (0.0 mm)
	0600			25	1012	NE	12	11	0.7	3	91	15% (0.0 mm)
	1200			25	1011	NNE	11	10	0.8	3	72	12% (0.0 mm)
	1800			25	1010	NE	10	9	0.8	3	77	14% (0.0 mm)
10-12-24 (Tuesday)	0001	26	18	26	1012	NNW	12	10	0.8	3	88	13% (0.0 mm)
	0600			25	1012	NE	16	15	0.9	3	91	15% (0.0 mm)
	1200			25	1012	NNE	14	13	0.8	3	72	12% (0.0 mm)
	1800			26	1012	NE	16	11	0.8	3	77	14% (0.0 mm)

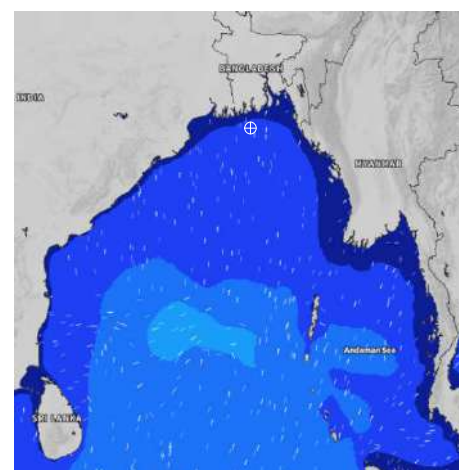
07 Dec 2024



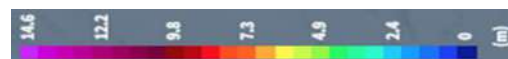
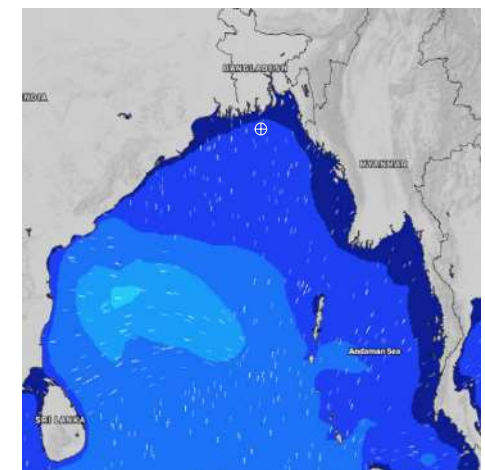
08 Dec 2024



09 Dec 2024



10 Dec 2024



Significant wave height (m)



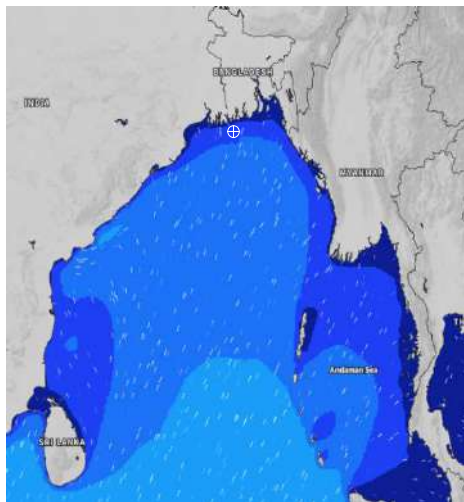
MARINE WEATHER FORECAST (03 Dec to 10 Dec 2024)

10 NM SOUTH OF MONGLA FAIRWAY (21° 16' N, 089° 34' E)

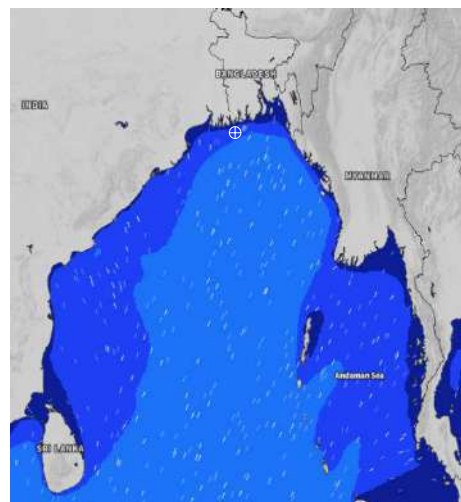


Date	Time	Air Temp (°C)		Sea Surface Temp (°C)	Baro Pressure (mbar)	Wind Direction	Wind Spd (kts)		Wave Ht (m)	Sea State	Humidity (%)	Prob of Rain
		Max	Min				Max	Avg				
03-12-24 (Tuesday)	0001	29	18	25	1012	N	10	9	1.0	3	77	11% (0.0 mm)
	0600			25	1012	N	11	10	1.0	3	79	12% (0.0 mm)
	1200			25	1013	N	11	10	1.1	3	50	10% (0.0 mm)
	1800			26	1011	SW	8	7	1.1	3	64	12% (0.0 mm)
04-12-24 (Wednesday)	0001	29	17	26	1012	NNW	9	8	1.1	3	80	11% (0.0 mm)
	0600			25	1012	NNE	15	14	1.1	3	80	12% (0.0 mm)
	1200			25	1012	NNE	12	11	1.1	3	48	11% (0.0 mm)
	1800			26	1011	N	8	7	1.0	3	63	12% (0.0 mm)
05-12-24 (Thursday)	0001	29	16	25	1012	N	10	9	1.0	3	86	15% (0.0 mm)
	0600			24	1012	N	12	10	0.9	3	89	13% (0.0 mm)
	1200			24	1013	N	11	10	0.9	3	53	10% (0.0 mm)
	1800			24	1010	NE	6	5	0.9	3	66	13% (0.0 mm)
06-12-24 (Friday)	0001	27	15	24	1011	NW	7	6	0.8	3	86	15% (0.0 mm)
	0600			24	1011	NE	9	8	0.7	3	89	13% (0.0 mm)
	1200			24	1012	NNW	8	7	0.7	3	53	10% (0.0 mm)
	1800			24	1010	NE	6	5	0.7	3	66	13% (0.0 mm)

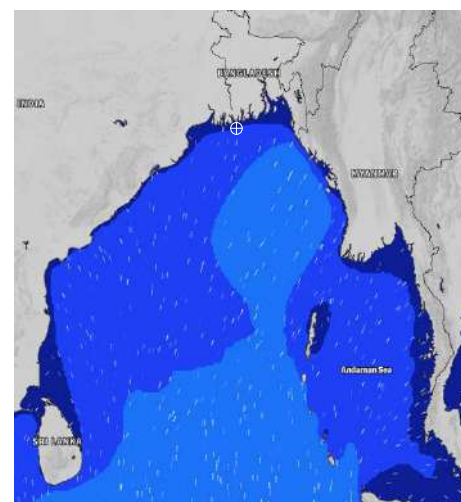
03 Dec 2024



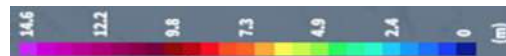
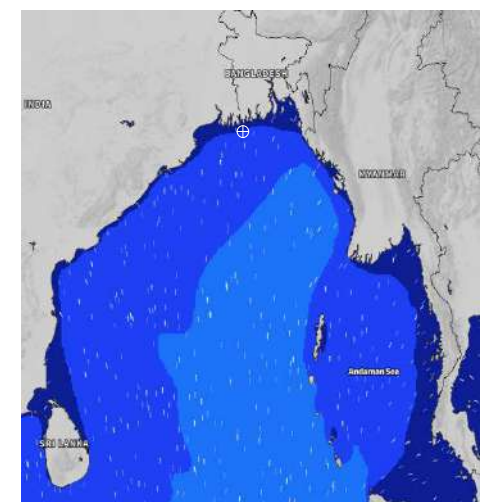
04 Dec 2024



05 Dec 2024



06 Dec 2024



Significant wave height (m)

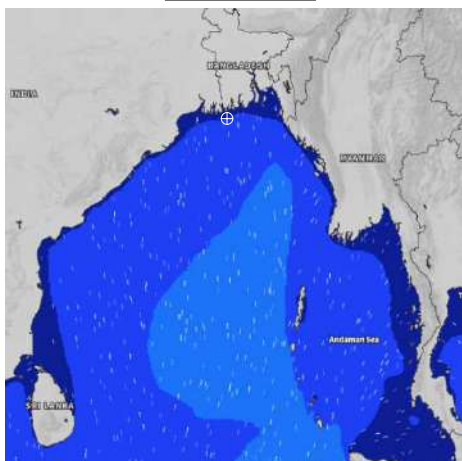


MARINE WEATHER FORECAST (03 Dec to 10 Dec 2024) 10 NM SOUTH OF MONGLA FAIRWAY (21° 16' N, 089° 34' E)

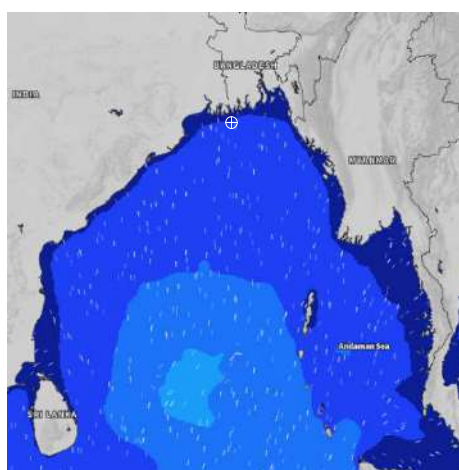


Date	Time	Air Temp (°C)		Sea Surface Temp (°C)	Baro Pressure (mbar)	Wind Direction	Wind Spd (kts)		Wave Ht (m)	Sea State	Humidity (%)	Prob of Rain
		Max	Min				Max	Avg				
07-12-24 (Saturday)	0001	27	16	25	1011	NNE	7	6	0.7	3	89	10% (0.0 mm)
	0600			24	1011	NE	8	7	0.8	3	92	10% (0.0 mm)
	1200			23	1012	NE	8	7	0.7	3	65	12% (0.0 mm)
	1800			23	1011	NNE	8	7	0.7	3	67	10% (0.0 mm)
08-12-24 (Sunday)	0001	27	17	25	1012	NNE	6	5	0.8	3	91	10% (0.0 mm)
	0600			23	1012	NNE	12	10	0.7	3	92	10% (0.0 mm)
	1200			23	1013	NW	10	9	0.7	3	67	11% (0.0 mm)
	1800			24	1011	NNW	6	5	0.7	3	76	13% (0.0 mm)
09-12-24 (Monday)	0001	27	16	25	1012	NW	8	7	0.6	3	86	15% (0.0 mm)
	0600			24	1012	NNE	7	6	0.6	3	89	14% (0.0 mm)
	1200			24	1012	NE	6	5	0.7	3	61	16% (0.0 mm)
	1800			24	1014	NNW	5	4	0.7	3	77	12% (0.0 mm)
10-12-24 (Tuesday)	0001	26	15	25	1013	NW	6	5	0.6	3	86	15% (0.0 mm)
	0600			24	1012	NNE	13	12	0.7	3	89	14% (0.0 mm)
	1200			24	1013	NE	12	11	0.7	3	61	16% (0.0 mm)
	1800			25	1012	NNW	12	11	0.7	3	77	12% (0.0 mm)

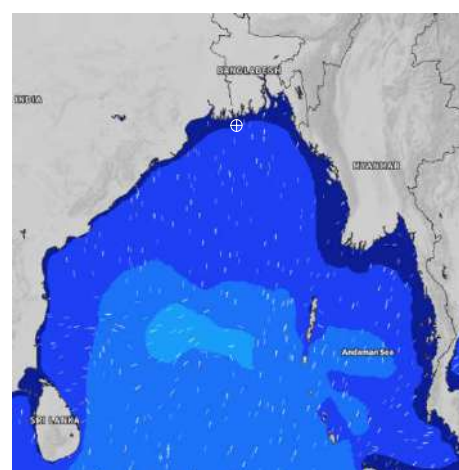
07 Dec 2024



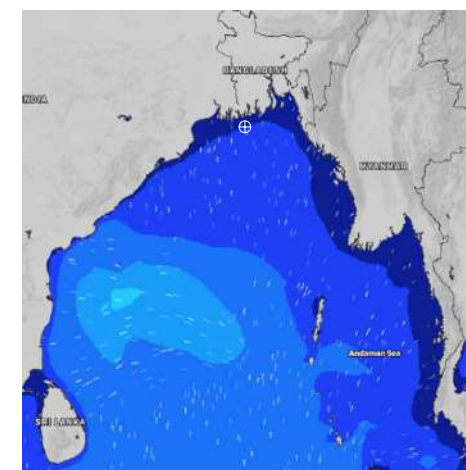
08 Dec 2024



09 Dec 2024



10 Dec 2024



Significant wave height (m)



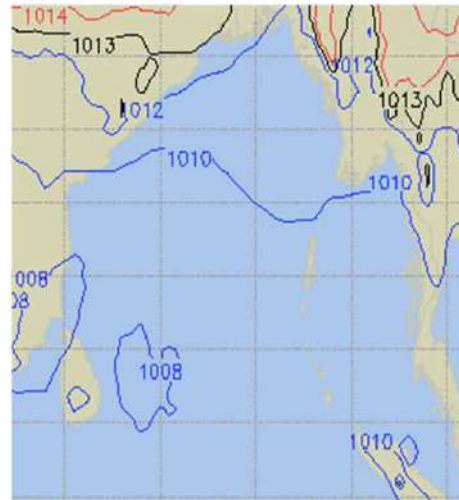
PREDICTED SURFACE PRESSURE FORECAST (03 to 09 Dec 2024)



03 Dec 2024



04 Dec 2024



05 Dec 2024



06 Dec 2024



07 Dec 2024



08 Dec 2024



09 Dec 2024

