



**SUMMARY OF MARINE WEATHER FORECAST**  
**COASTAL AREA OF BANGLADESH**  
**DATE: 03 to 10 Oct 2024**



Fleet forecast	Trough of low lies over North Bay. Monsoon is active over Bangladesh and strong over North Bay. A low pressure area is likely to form over North Bay and adjoining area during next 48 hrs.
Wind direction, speed	South/south-westerly 8 kts, (Temporary gusting up to 25 kts).
Wave height & sea state	Wave height: 0.1 to 1.7 m (Sea state:1 to 4).
Sea surface temperature	25°C - 29°C (May remain nearly unchanged).
Baro pressure	1003- 1012 mb
Rainfall	Light to moderate rain/thunder showers over Bay of Bengal & adjoining area with moderately heavy to very heavy falls at places over Chattogram, Barishal & Sylhet division

**Outlook for 03 to 10 Oct 2024: Rainfall activity may continue**

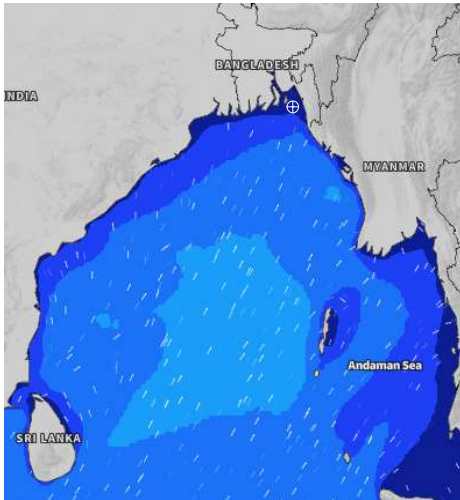


# MARINE WEATHER FORECAST (03 to 10 Oct 2024) NEAR AUTHORITY BUOY (22° 12' N, 091° 38' E)

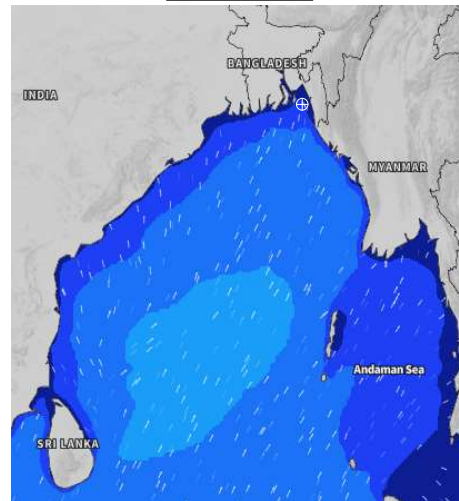


Date	Time	Air Temp (°C)		Sea Surface Temp (°C)	Baro Pressure (mbar)	Wind Direction	Wind Spd (kts)		Wave Ht (m)	Sea State	Humidity (%)	Prob of Rain
		Max	Min				Max	Avg				
03-10-24 (Thursday)	0001	29	26	27	1004	SE	4	3	0.1	1	93	66% (1.2 mm)
	0600			27	1004	SE	10	8	0.1	1	93	41% (0.4 mm)
	1200			28	1004	S	18	15	0.3	2	86	43% (0.5 mm)
	1800			27	1004	SSE	17	14	0.3	2	90	75% (1.2 mm)
04-10-24 (Friday)	0001	29	25	26	1006	S	16	14	0.3	2	92	73% (0.7 mm)
	0600			26	1006	SSE	17	14	0.3	2	94	76% (0.7 mm)
	1200			28	1008	S	18	14	0.3	2	84	72% (0.8 mm)
	1800			28	1007	SSE	17	13	0.3	2	87	51% (0.5 mm)
05-10-24 (Saturday)	0001	30	25	27	1008	SSE	22	18	0.5	2	94	24% (0.0 mm)
	0600			27	1008	SSE	19	13	0.3	2	95	30% (0.1 mm)
	1200			29	1008	S	14	12	0.3	2	84	35% (0.2 mm)
	1800			26	1008	SE	16	16	0.3	2	87	39% (0.4 mm)
06-10-24 (Sunday)	0001	30	26	26	1010	SE	13	10	0.2	2	94	28% (0.1 mm)
	0600			25	1010	ESE	10	8	0.2	2	95	58% (0.6 mm)
	1200			28	1010	SSW	8	7	0.1	1	84	56% (0.5 mm)
	1800			29	1009	SSW	5	4	0.1	1	87	31% (0.1 mm)

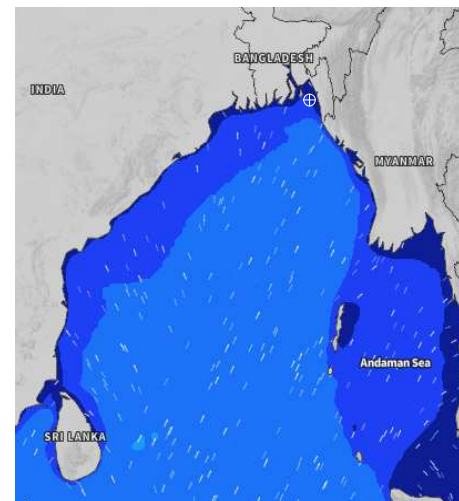
**03 Oct 2024**



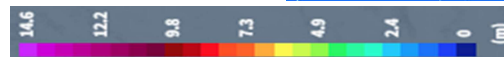
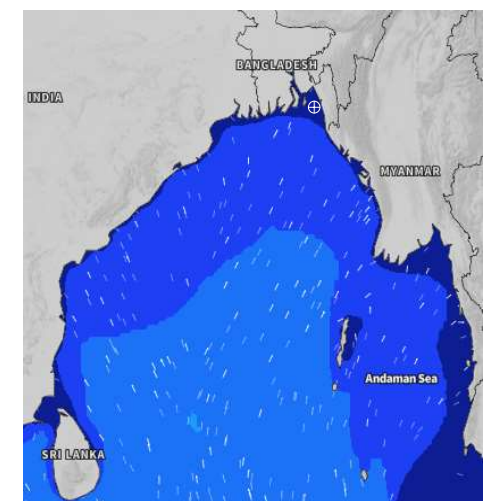
**04 Oct 2024**



**05 Oct 2024**



**06 Oct 2024**



Significant wave height (m)

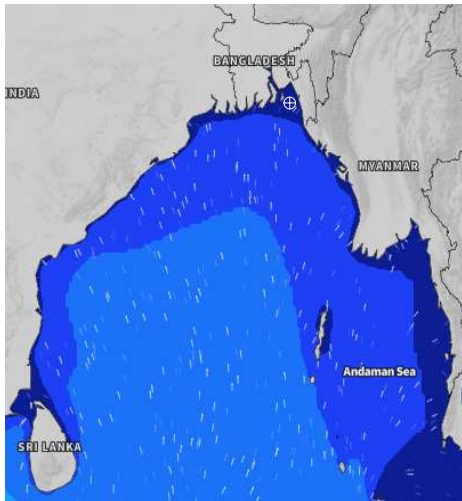


# MARINE WEATHER FORECAST (03 to 10 Oct 2024) NEAR AUTHORITY BUOY (22° 12' N, 091° 38' E)

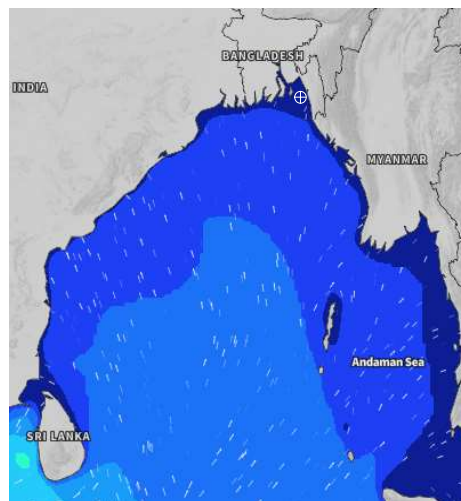


Date	Time	Air Temp (°C)		Sea Surface Temp (°C)	Baro Pressure (mbar)	Wind Direction	Wind Spd (kts)		Wave Ht (m)	Sea State	Humidity (%)	Prob of Rain
		Max	Min				Max	Avg				
07-10-24 (Monday)	0001	31	26	27	1011	SE	7	6	0.1	1	92	44% (0.4 mm)
	0600			26	1012	SE	6	5	0.1	1	94	63% (0.6 mm)
	1200			28	1012	S	5	4	0.1	1	84	52% (0.5 mm)
	1800			29	1011	SSE	6	5	0.1	1	86	24% (0.1 mm)
08-10-24 (Tuesday)	0001	31	26	28	1012	SE	5	4	0.1	1	93	38% (0.3 mm)
	0600			26	1012	SE	7	6	0.1	1	92	37% (0.3 mm)
	1200			28	1011	SSW	6	5	0.1	1	85	42% (0.4 mm)
	1800			29	1009	S	6	5	0.1	1	88	15% (0.0 mm)
09-10-24 (Wednesday)	0001	31	26	28	1010	SE	6	5	0.1	1	92	40% (0.4 mm)
	0600			27	1010	SE	7	6	0.1	1	92	44% (0.4 mm)
	1200			29	1010	SSW	6	5	0.1	1	82	43% (0.4 mm)
	1800			29	1008	SSE	5	4	0.1	1	87	24% (0.1 mm)
10-10-24 (Thursday)	0001	31	25	28	1009	SE	6	5	0.1	1	92	50% (0.5 mm)
	0600			26	1009	SE	6	5	0.1	1	92	57% (0.5 mm)
	1200			28	1009	SSW	6	5	0.1	1	82	39% (0.3 mm)
	1800			29	1007	SE	7	6	0.1	1	87	24% (0.1 mm)

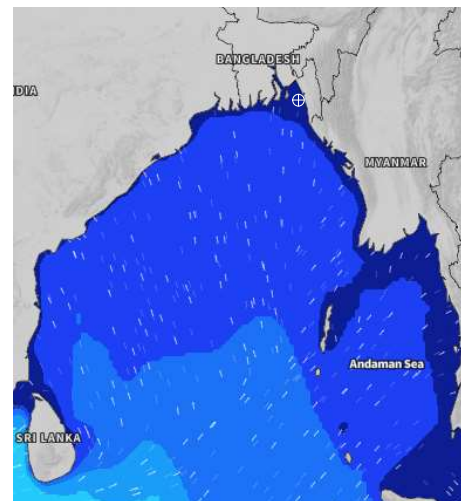
**07 Oct 2024**



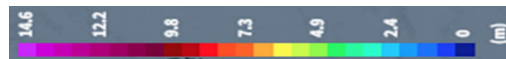
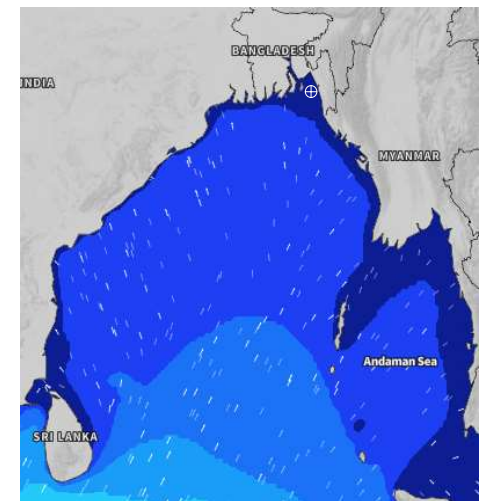
**08 Oct 2024**



**09 Oct 2024**



**10 Oct 2024**



Significant wave height (m)



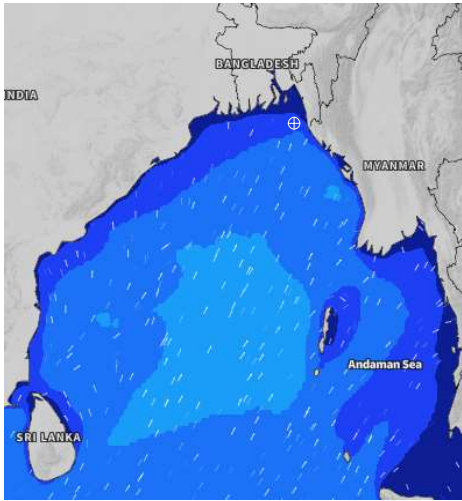


## MARINE WEATHER FORECAST (03 to 10 Oct 2024) 20 NM WEST OF ELEPHANT POINT (21° 10' N, 091° 42' E)

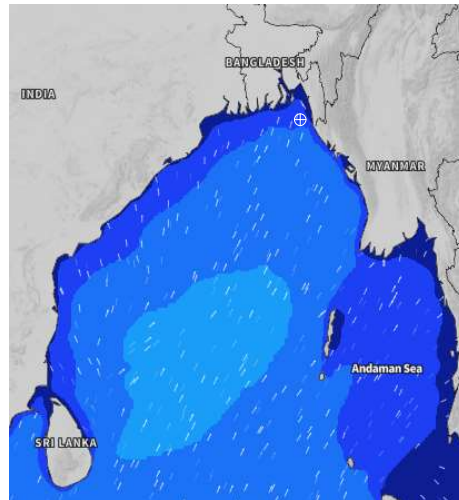


Date	Time	Air Temp (°C)		Sea Surface Temp (°C)	Baro Pressure (mbar)	Wind Direction	Wind Spd (kts)		Wave Ht (m)	Sea State	Humidity (%)	Prob of Rain
		Max	Min				Max	Avg				
03-10-24 (Thursday)	0001	28	26	28	1004	E	6	5	0.8	3	92	78% (1.8 mm)
	0600			28	1004	SE	15	14	0.9	3	93	66% (1.2 mm)
	1200			28	1004	SSE	14	13	1.1	3	88	75% (1.5 mm)
	1800			27	1004	SSW	9	8	1.0	3	91	51% (0.6 mm)
04-10-24 (Friday)	0001	29	25	27	1006	SW	14	13	1.0	3	91	59% (0.6 mm)
	0600			28	1007	SSE	17	15	1.1	3	94	45% (0.5 mm)
	1200			29	1008	SSE	18	17	1.2	3	89	65% (0.7 mm)
	1800			29	1007	SSE	15	15	1.2	3	90	54% (0.5 mm)
05-10-24 (Saturday)	0001	29	26	28	1008	SSE	17	16	1.2	3	92	15% (0.0 mm)
	0600			28	1008	SE	20	18	1.4	4	93	17% (0.0 mm)
	1200			27	1008	SSE	18	17	1.4	4	85	54% (0.5 mm)
	1800			26	1008	SE	8	7	1.1	3	90	41% (0.4 mm)
06-10-24 (Sunday)	0001	30	26	28	1010	SSE	10	9	1.0	3	92	34% (0.2 mm)
	0600			28	1010	SE	10	9	0.9	3	93	52% (0.5 mm)
	1200			28	1010	SSE	9	8	0.8	3	85	70% (1.0 mm)
	1800			29	1009	SSW	7	6	0.7	3	90	24% (0.1 mm)

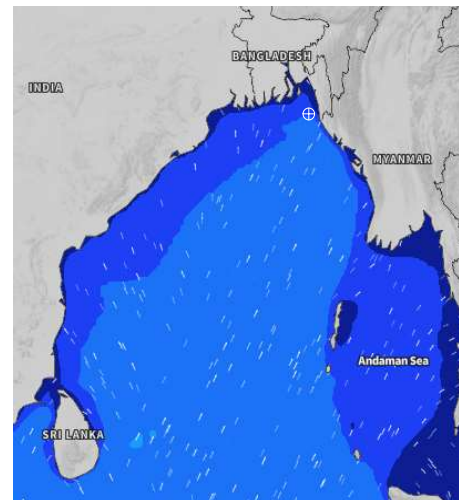
**03 Oct 2024**



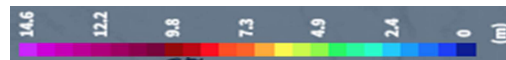
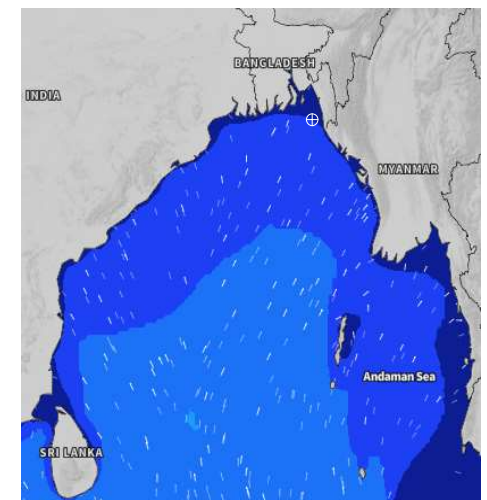
**04 Oct 2024**



**05 Oct 2024**



**06 Oct 2024**



Significant wave height (m)



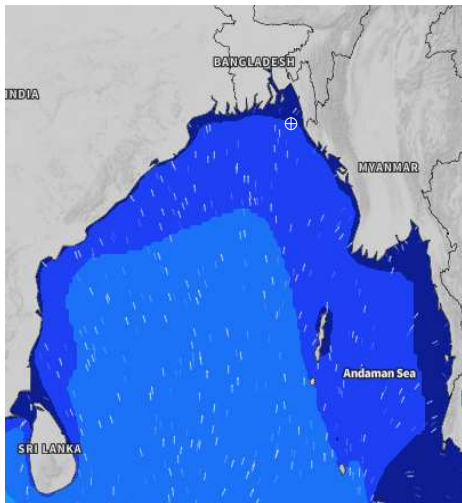
# MARINE WEATHER FORECAST (03 to 10 Oct 2024)

## 20 NM WEST OF ELEPHANT POINT (21° 10' N, 091° 42' E)

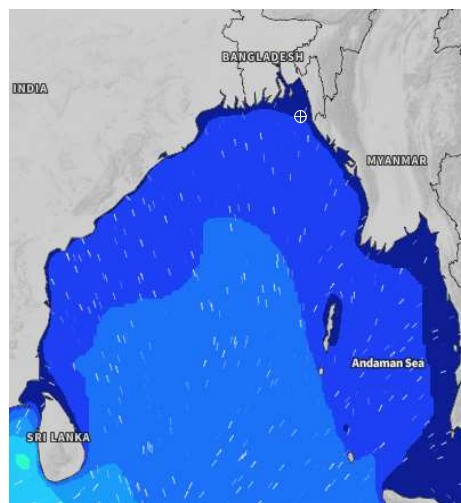


Date	Time	Air Temp (°C)		Sea Surface Temp (°C)	Baro Pressure (mbar)	Wind Direction	Wind Spd (kts)		Wave Ht (m)	Sea State	Humidity (%)	Prob of Rain
		Max	Min				Max	Avg				
07-10-24 (Monday)	0001	31	26	29	1011	SSE	6	5	0.7	3	92	63% (0.6 mm)
	0600			28	1012	E	7	6	0.7	3	93	64% (0.6 mm)
	1200			28	1012	SE	6	5	0.7	3	84	76% (0.7 mm)
	1800			29	1011	SSE	4	3	0.7	3	87	52% (0.5 mm)
08-10-24 (Tuesday)	0001	31	26	29	1012	SSE	5	4	0.7	3	91	67% (0.6 mm)
	0600			28	1012	SE	4	3	0.6	3	94	42% (0.4 mm)
	1200			28	1011	SSE	4	3	0.6	3	86	53% (0.5 mm)
	1800			29	1009	S	5	4	0.6	3	90	41% (0.4 mm)
09-10-24 (Wednesday)	0001	31	26	29	1010	SSE	6	5	0.6	3	91	64% (0.6 mm)
	0600			28	1010	SE	4	3	0.6	3	94	34% (0.2 mm)
	1200			29	1010	SSE	6	5	0.6	3	86	43% (0.4 mm)
	1800			29	1008	SSE	7	6	0.6	3	90	24% (0.1 mm)
10-10-24 (Thursday)	0001	31	25	29	1009	SE	6	5	0.5	2	91	64% (0.6 mm)
	0600			28	1009	SE	5	4	0.5	2	94	51% (0.5 mm)
	1200			29	1009	SSW	7	6	0.5	2	86	43% (0.4 mm)
	1800			29	1007	SE	9	8	0.5	2	90	28% (0.1 mm)

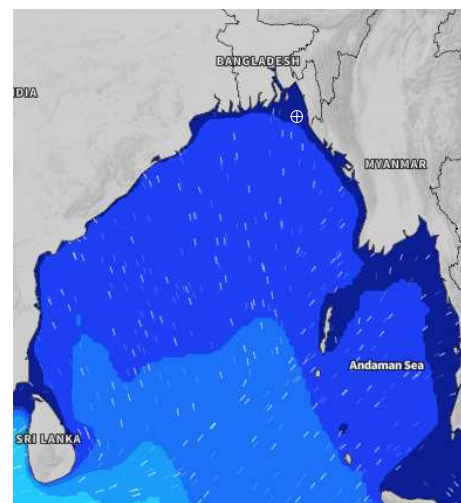
**07 Oct 2024**



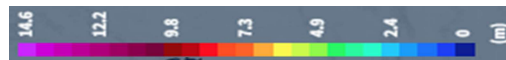
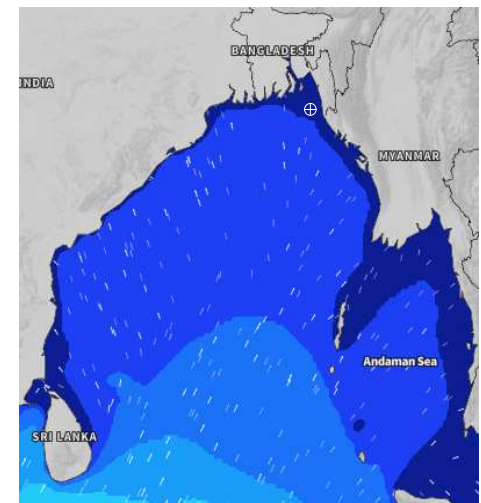
**08 Oct 2024**



**09 Oct 2024**



**10 Oct 2024**



Significant wave height (m)





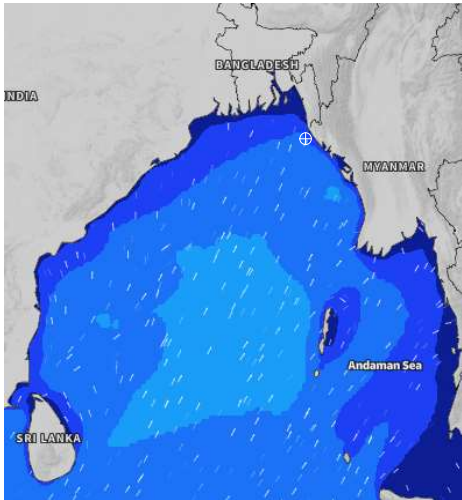
## MARINE WEATHER FORECAST (03 to 10 Oct 2024)

### 15 NM WEST OF ST. MARTIN'S LIGHT HOUSE (20° 37' N, 092° 03' E)

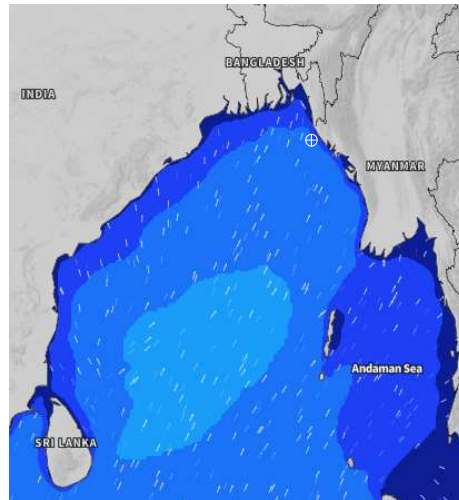


Date	Time	Air Temp (°C)		Sea Surface Temp (°C)	Baro Pressure (mbar)	Wind Direction	Wind Spd (kts)		Wave Ht (m)	Sea State	Humidity (%)	Prob of Rain
		Max	Min				Max	Avg				
03-10-24 (Thursday)	0001	28	26	28	1005	WNW	9	8	1.1	3	91	94% (2.1 mm)
	0600			27	1003	SE	6	5	1.2	3	92	87% (1.5 mm)
	1200			27	1006	SSE	5	4	1.3	4	90	96% (1.1 mm)
	1800			27	1004	SSW	6	5	1.3	4	91	80% (1.0 mm)
04-10-24 (Friday)	0001	28	26	27	1007	ESE	7	6	1.3	4	92	42% (0.4 mm)
	0600			29	1006	SSE	12	11	1.3	4	92	49% (0.5 mm)
	1200			28	1008	SSE	14	12	1.3	4	91	35% (0.2 mm)
	1800			29	1007	SSE	10	9	1.3	4	91	53% (0.5 mm)
05-10-24 (Saturday)	0001	29	26	29	1009	SE	14	12	1.3	4	93	24% (0.1 mm)
	0600			28	1008	SE	16	15	1.4	4	93	55% (0.5 mm)
	1200			26	1009	SSE	25	18	1.7	4	85	75% (0.8 mm)
	1800			26	1008	NW	5	4	1.3	4	87	54% (0.5 mm)
06-10-24 (Sunday)	0001	30	26	27	1010	SSW	4	3	1.2	3	93	24% (0.1 mm)
	0600			28	1009	SE	10	9	1.1	3	93	49% (0.5 mm)
	1200			29	1011	SSE	9	8	1.0	3	85	81% (0.8 mm)
	1800			29	1009	S	6	5	0.9	3	87	45% (0.4 mm)

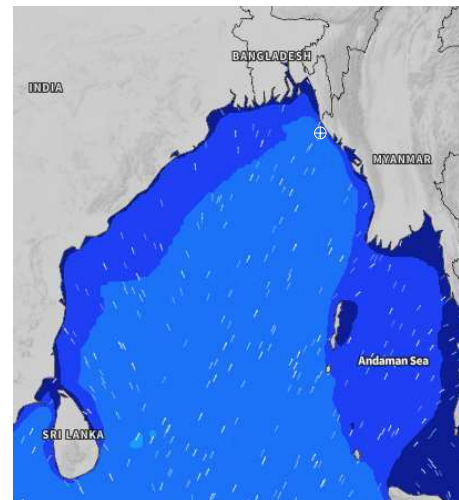
**03 Oct 2024**



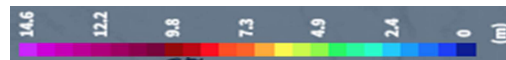
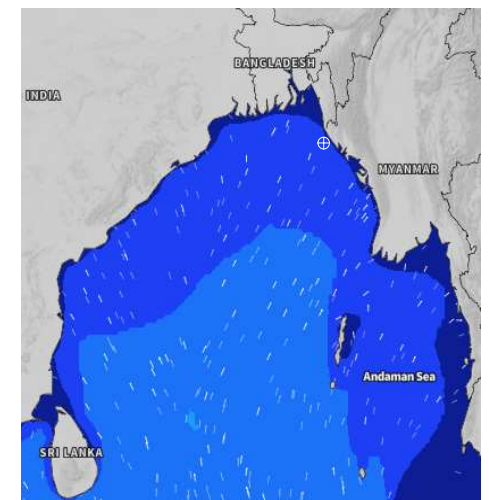
**04 Oct 2024**



**05 Oct 2024**



**06 Oct 2024**



Significant wave height (m)



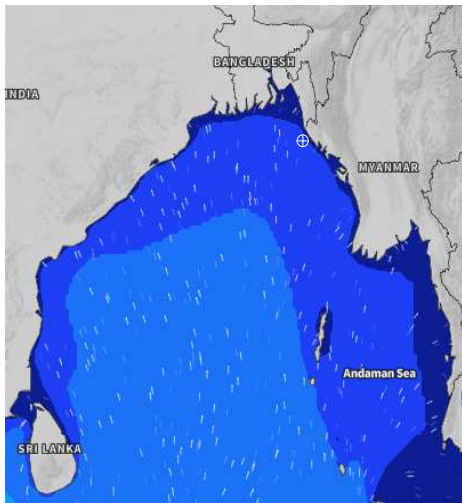
# MARINE WEATHER FORECAST (03 to 10 Oct 2024)

## 15 NM WEST OF ST. MARTIN'S LIGHT HOUSE (20° 37' N, 092° 03' E)

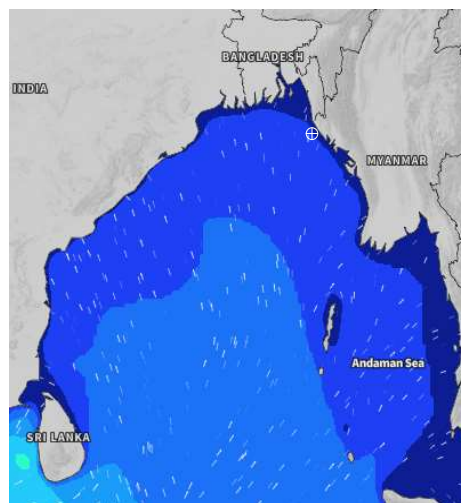


Date	Time	Air Temp (°C)		Sea Surface Temp (°C)	Baro Pressure (mbar)	Wind Direction	Wind Spd (kts)		Wave Ht (m)	Sea State	Humidity (%)	Prob of Rain
		Max	Min				Max	Avg				
07-10-24 (Monday)	0001	31	26	29	1012	S	5	4	0.9	3	92	37% (0.2 mm)
	0600			28	1011	SE	5	4	0.9	3	94	44% (0.4 mm)
	1200			28	1013	SE	9	8	0.9	3	89	46% (0.4 mm)
	1800			29	1010	E	5	4	0.8	3	90	10% (0.0 mm)
08-10-24 (Tuesday)	0001	31	26	29	1012	S	5	4	0.8	3	92	21% (0.0 mm)
	0600			29	1011	SE	5	4	0.8	3	93	33% (0.1 mm)
	1200			29	1013	ESE	4	3	0.8	3	87	34% (0.1 mm)
	1800			29	1009	SE	5	4	0.8	3	89	16% (0.0 mm)
09-10-24 (Wednesday)	0001	31	26	29	1011	S	6	5	0.7	3	92	18% (0.0 mm)
	0600			28	1009	SE	6	5	0.7	3	93	33% (0.2 mm)
	1200			28	1012	ESE	4	3	0.7	3	86	40% (0.3 mm)
	1800			29	1008	SE	9	8	0.7	3	90	12% (0.0 mm)
10-10-24 (Thursday)	0001	31	26	29	1010	S	6	5	0.7	3	92	15% (0.0 mm)
	0600			28	1008	SE	5	4	0.6	3	93	37% (0.2 mm)
	1200			29	1010	ESE	5	4	0.6	3	86	43% (0.4 mm)
	1800			29	1007	SE	8	7	0.6	3	90	19% (0.0 mm)

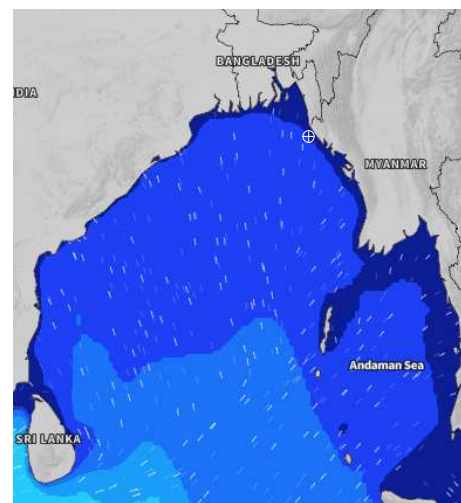
**07 Oct 2024**



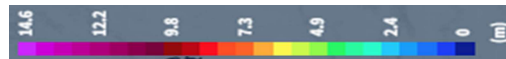
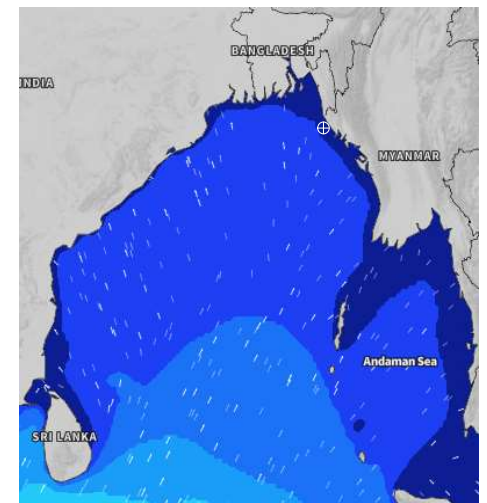
**08 Oct 2024**



**09 Oct 2024**



**10 Oct 2024**



Significant wave height (m)





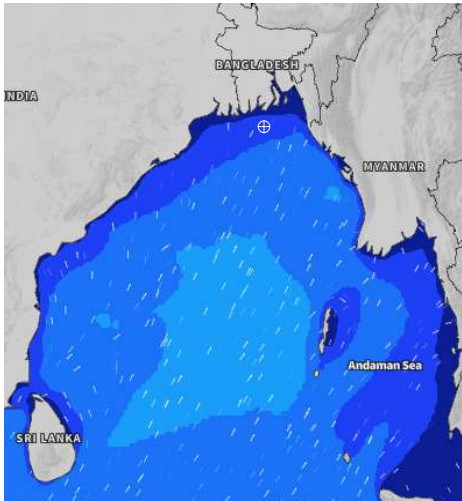
# MARINE WEATHER FORECAST (03 to 10 Oct 2024)

## 40 NM ESE OF PAYRA FAIRWAY (21° 07' N, 090° 45' E)

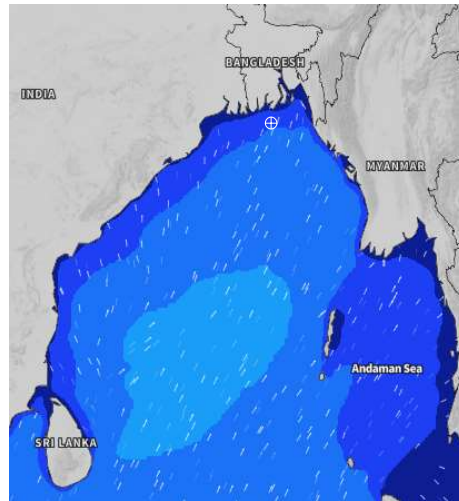


Date	Time	Air Temp (°C)		Sea Surface Temp (°C)	Baro Pressure (mbar)	Wind Direction	Wind Spd (kts)		Wave Ht (m)	Sea State	Humidity (%)	Prob of Rain
		Max	Min				Max	Avg				
03-10-24 (Thursday)	0001	29	27	28	1004	NW	4	3	1.1	3	91	41% (0.4 mm)
	0600			28	1003	W	7	6	1.1	3	94	53% (0.5 mm)
	1200			28	1004	W	8	7	1.2	3	86	85% (0.8 mm)
	1800			29	1004	S	6	5	1.2	3	88	21% (0.0 mm)
04-10-24 (Friday)	0001	29	27	29	1005	S	9	8	1.2	3	91	50% (0.5 mm)
	0600			29	1006	S	12	11	1.3	4	91	46% (0.4 mm)
	1200			29	1007	S	14	12	1.3	4	84	48% (0.5 mm)
	1800			29	1007	S	12	11	1.3	4	87	20% (0.0 mm)
05-10-24 (Saturday)	0001	29	27	29	1008	SSE	13	12	1.3	4	90	36% (0.2 mm)
	0600			29	1008	SSE	11	10	1.3	4	91	32% (0.2 mm)
	1200			29	1008	S	10	9	1.3	4	87	56% (0.5 mm)
	1800			29	1007	S	10	9	1.2	3	87	14% (0.0 mm)
06-10-24 (Sunday)	0001	30	27	28	1009	S	11	10	1.3	4	90	32% (0.2 mm)
	0600			28	1009	SSE	11	10	1.2	3	91	68% (0.7 mm)
	1200			29	1010	SSE	9	8	1.0	3	87	59% (0.6 mm)
	1800			29	1009	S	8	7	0.9	3	87	18% (0.0 mm)

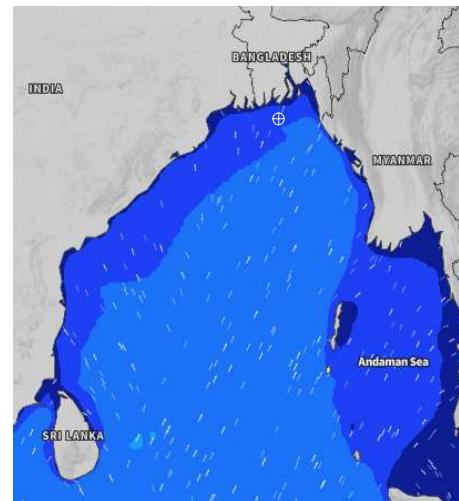
**03 Oct 2024**



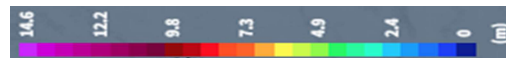
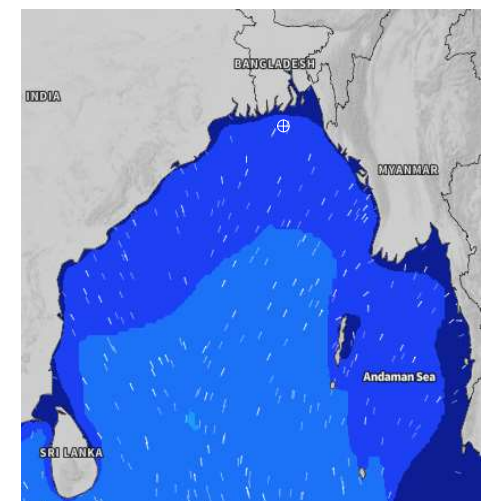
**04 Oct 2024**



**05 Oct 2024**



**06 Oct 2024**



Significant wave height (m)





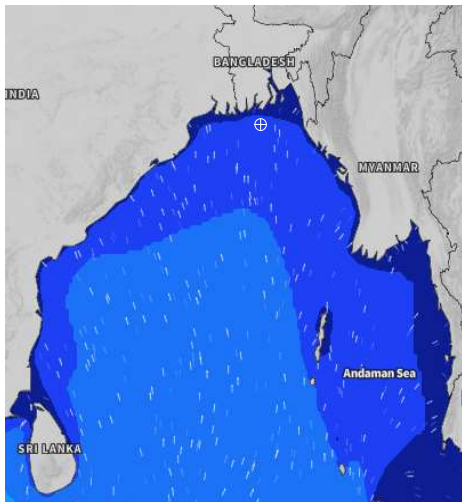
# MARINE WEATHER FORECAST (03 to 10 Oct 2024)

## 40 NM ESE OF PAYRA FAIRWAY (21° 07' N, 090° 45' E)

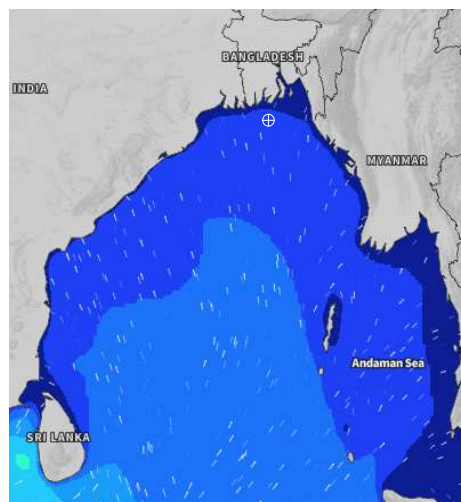


Date	Time	Air Temp (°C)		Sea Surface Temp (°C)	Baro Pressure (mbar)	Wind Direction	Wind Spd (kts)		Wave Ht (m)	Sea State	Humidity (%)	Prob of Rain
		Max	Min				Max	Avg				
07-10-24 (Monday)	0001	31	27	29	1012	S	7	6	0.9	3	90	46% (0.4 mm)
	0600			28	1012	SSW	5	4	0.9	3	91	55% (0.5 mm)
	1200			28	1011	S	4	3	0.9	3	85	60% (0.6 mm)
	1800			29	1009	SSW	6	5	0.9	3	88	10% (0.0 mm)
08-10-24 (Tuesday)	0001	31	27	29	1010	S	9	8	0.8	3	90	17% (0.0 mm)
	0600			29	1010	SSE	8	7	0.8	3	94	33% (0.2 mm)
	1200			29	1010	SSE	7	6	0.8	3	85	47% (0.4 mm)
	1800			29	1008	SSE	7	6	0.8	3	85	12% (0.0 mm)
09-10-24 (Wednesday)	0001	31	27	29	1010	SSW	8	7	0.8	3	90	23% (0.0 mm)
	0600			29	1009	S	9	8	0.7	3	94	36% (0.2 mm)
	1200			29	1008	SSE	6	5	0.7	3	85	54% (0.5 mm)
	1800			29	1007	SSE	7	6	0.7	3	85	11% (0.0 mm)
10-10-24 (Thursday)	0001	31	27	29	1009	SSW	8	7	0.8	3	90	34% (0.2 mm)
	0600			29	1009	S	9	8	0.7	3	94	50% (0.5 mm)
	1200			29	1009	SSE	6	5	0.7	3	85	52% (0.5 mm)
	1800			29	1007	SSE	7	6	0.7	3	85	10% (0.0 mm)

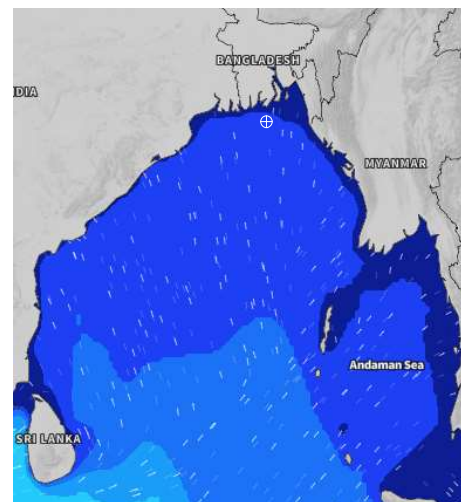
**07 Oct 2024**



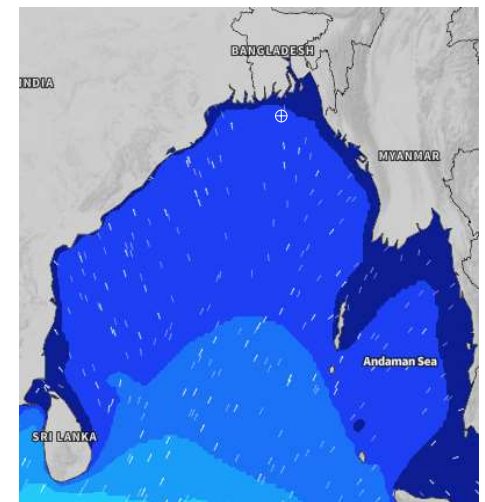
**08 Oct 2024**



**09 Oct 2024**



**10 Oct 2024**



Significant wave height (m)



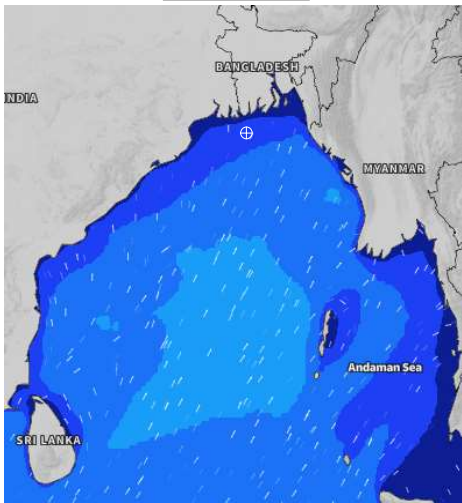
# MARINE WEATHER FORECAST (03 to 10 Oct 2024)

## 10 NM SOUTH OF MONGLA FAIRWAY (21° 16' N, 089° 34' E)

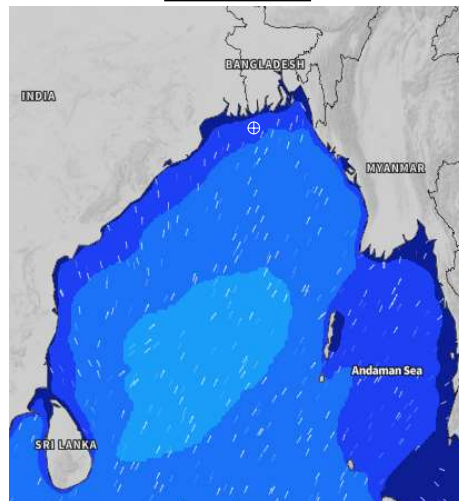


Date	Time	Air Temp (°C)		Sea Surface Temp (°C)	Baro Pressure (mbar)	Wind Direction	Wind Spd (kts)		Wave Ht (m)	Sea State	Humidity (%)	Prob of Rain
		Max	Min				Max	Avg				
03-10-24 (Thursday)	0001	30	26	29	1004	NNW	4	3	0.9	3	94	61% (0.6 mm)
	0600			28	1003	NNE	4	3	1.0	3	96	46% (0.5 mm)
	1200			29	1004	SW	6	5	1.0	3	84	51% (0.5 mm)
	1800			29	1003	SW	4	3	1.0	3	87	33% (0.2 mm)
04-10-24 (Friday)	0001	29	26	29	1005	SSW	11	10	1.0	3	92	49% (0.5 mm)
	0600			29	1005	S	13	12	1.1	3	94	52% (0.5 mm)
	1200			29	1006	SSW	13	12	1.1	3	87	73% (0.7 mm)
	1800			29	1006	S	12	11	1.1	3	88	13% (0.0 mm)
05-10-24 (Saturday)	0001	30	26	29	1007	S	13	12	1.2	3	92	43% (0.4 mm)
	0600			29	1007	SSE	12	10	1.2	3	94	41% (0.0 mm)
	1200			29	1008	S	11	10	1.1	3	81	67% (0.7 mm)
	1800			29	1007	S	8	7	1.1	3	87	16% (0.0 mm)
06-10-24 (Sunday)	0001	31	26	29	1009	S	11	10	1.1	3	92	24% (0.1 mm)
	0600			28	1009	SSE	10	9	1.1	3	94	50% (0.5 mm)
	1200			29	1010	S	10	9	1.1	3	81	77% (0.7 mm)
	1800			29	1009	S	11	10	1.2	3	87	23% (0.0 mm)

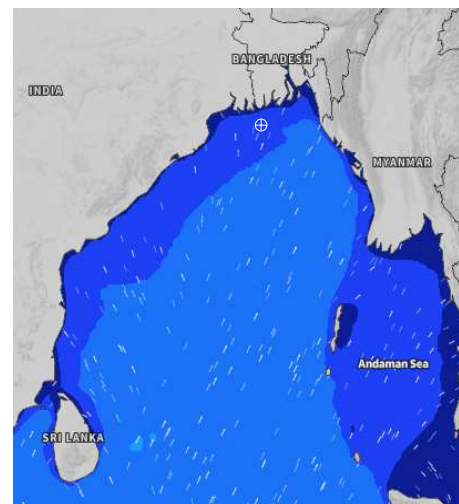
**03 Oct 2024**



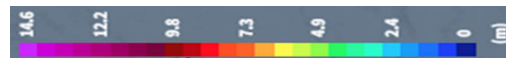
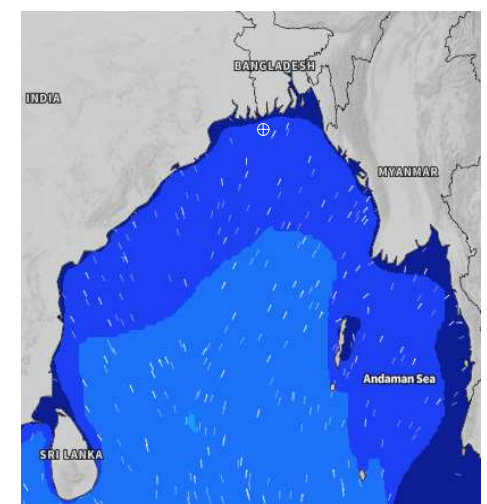
**04 Oct 2024**



**05 Oct 2024**



**06 Oct 2024**



Significant wave height (m)



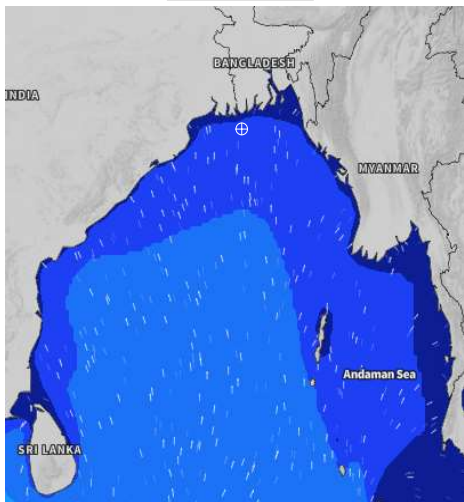


## MARINE WEATHER FORECAST (03 to 10 Oct 2024) 10 NM SOUTH OF MONGLA FAIRWAY (21° 16' N, 089° 34' E)

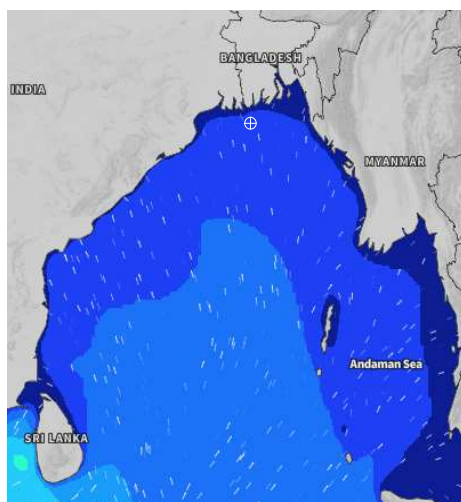


Date	Time	Air Temp (°C)		Sea Surface Temp (°C)	Baro Pressure (mbar)	Wind Direction	Wind Spd (kts)		Wave Ht (m)	Sea State	Humidity (%)	Prob of Rain
		Max	Min				Max	Avg				
07-10-24 (Monday)	0001	32	26	29	1011	SSW	10	9	0.9	3	92	24% (0.1 mm)
	0600			29	1011	SSW	7	6	0.9	3	93	66% (0.6 mm)
	1200			29	1012	SSW	7	6	0.9	3	81	64% (0.6 mm)
	1800			29	1010	SW	7	6	0.9	3	87	24% (0.1 mm)
08-10-24 (Tuesday)	0001	32	26	29	1012	S	9	8	1.0	3	92	14% (0.0 mm)
	0600			28	1011	S	7	6	0.9	3	94	37% (0.2 mm)
	1200			29	1011	S	5	4	0.9	3	81	68% (0.7 mm)
	1800			29	1009	SW	8	7	0.9	3	86	10% (0.0 mm)
09-10-24 (Wednesday)	0001	32	26	29	1010	SSW	11	10	0.9	3	90	24% (0.1 mm)
	0600			29	1009	S	10	9	1.0	3	91	50% (0.5 mm)
	1200			29	1010	SSE	8	7	1.0	3	83	58% (0.6 mm)
	1800			29	1008	S	9	8	1.0	3	86	15% (0.0 mm)
10-10-24 (Thursday)	0001	32	26	29	1009	SSW	10	9	0.9	3	90	30% (0.2 mm)
	0600			28	1008	S	11	10	1.0	3	91	52% (0.5 mm)
	1200			29	1009	SSE	9	8	0.9	3	83	64% (0.6 mm)
	1800			29	1007	S	8	7	0.8	3	86	18% (0.0 mm)

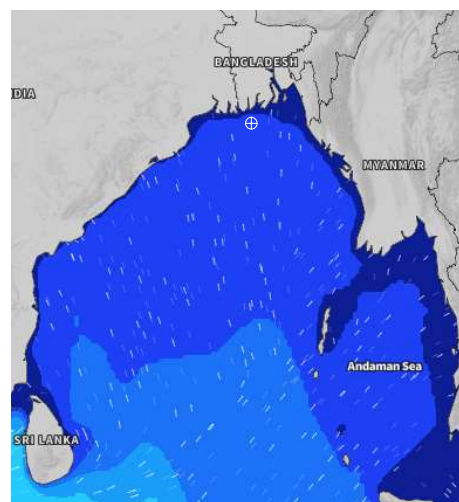
**07 Oct 2024**



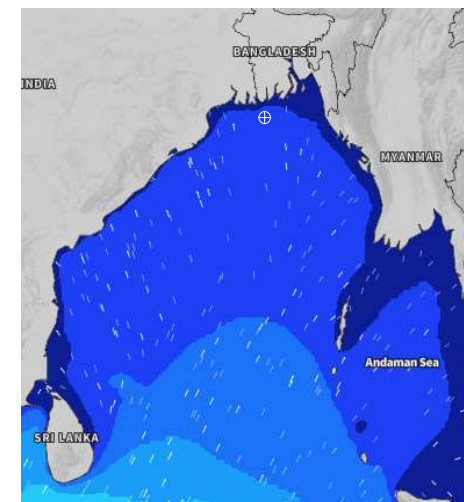
**08 Oct 2024**



**09 Oct 2024**



**10 Oct 2024**



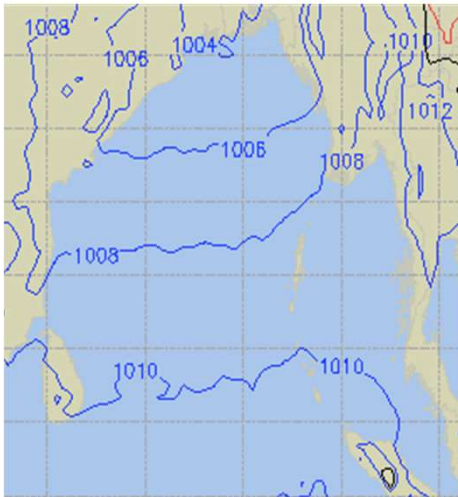
Significant wave height (m)



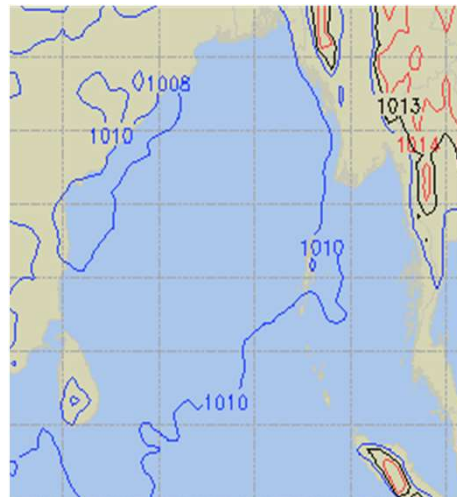
# PREDICTED SURFACE PRESSURE FORECAST (03 to 09 Oct 2024)



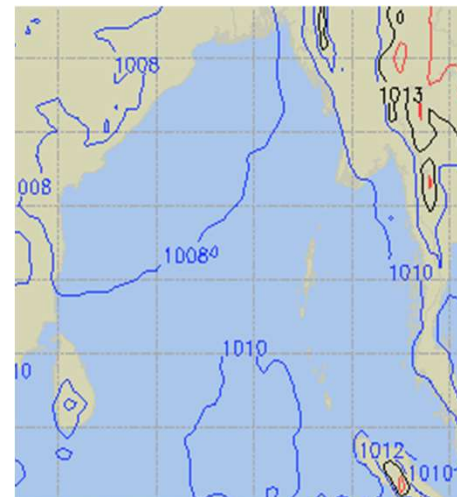
**03 Oct 2024**



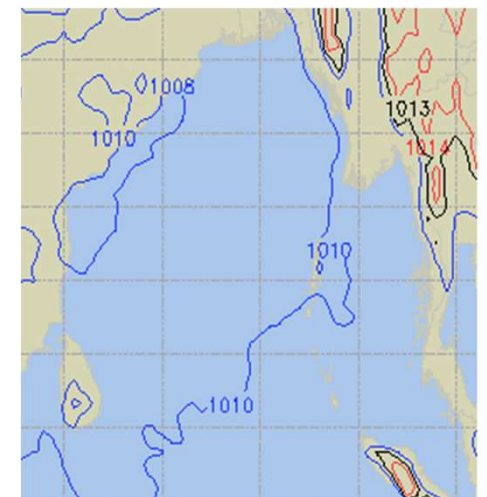
**04 Oct 2024**



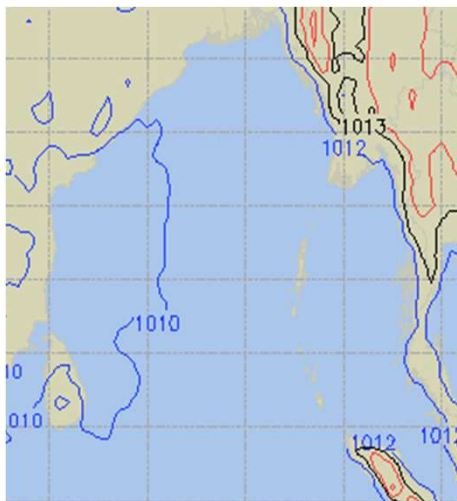
**05 Oct 2024**



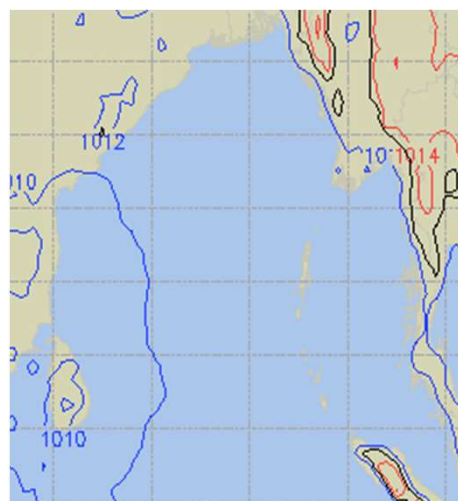
**06 Oct 2024**



**07 Oct 2024**



**08 Oct 2024**



**09 Oct 2024**

