



SUMMARY OF MARINE WEATHER FORECAST
COASTAL AREA OF BANGLADESH
DATE: 03 TO 10 AUG 2024



Fleet forecast	<p>Due to strong monsoon deep convection is taking place and steep pressure gradient observed over North Bay.</p> <p>Maritime ports of Chattogram, Cox's Bazar, Mongla and Payra have been advised to keep hoisted LOCAL CAUTIONARY SIGNAL NO. THREE (R) THREE.</p>
Wind direction, speed	South/south-easterly 13 kts, (Temporary gusting up to 20 kts).
Wave height & sea state	Wave height: 0.2 to 2.4 m (Sea state:1 to 4).
Sea surface temperature	27°C - 29°C (May remain nearly unchanged).
Baro pressure	1002 - 1008 mb
Rainfall	Light to moderate rain/thunder showers over Bay of Bengal & adjoining area.

Outlook for 03 to 10 Aug 2024: Rainfall activity is likely to continue.

MARINE WEATHER FORECAST- NEAR AUTHORITY BUOY (Lat 22° 12'N, Long 091° 38'E)

DATE : 03 to 10 Aug 2024

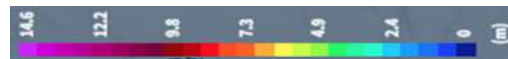
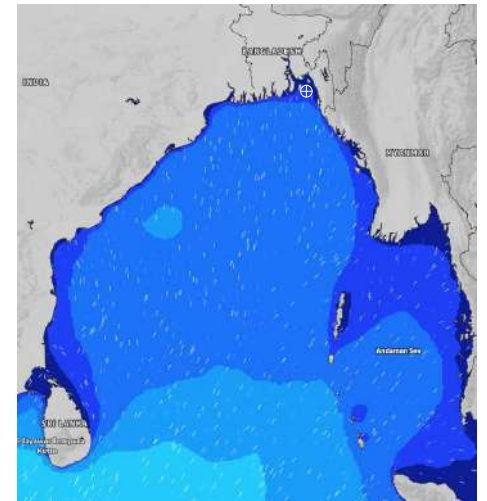
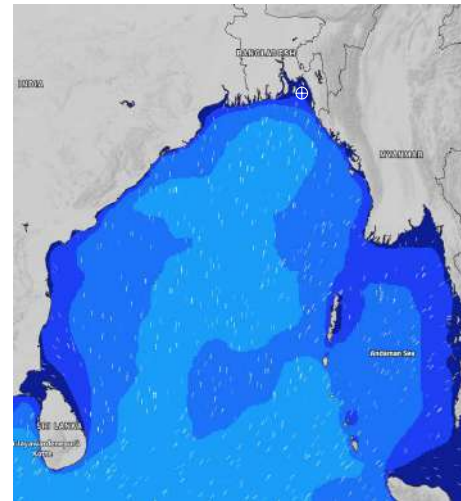
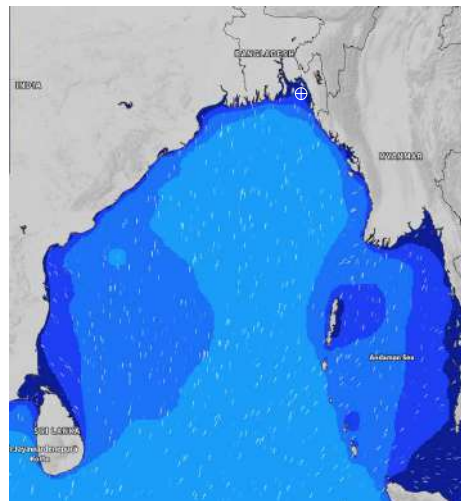
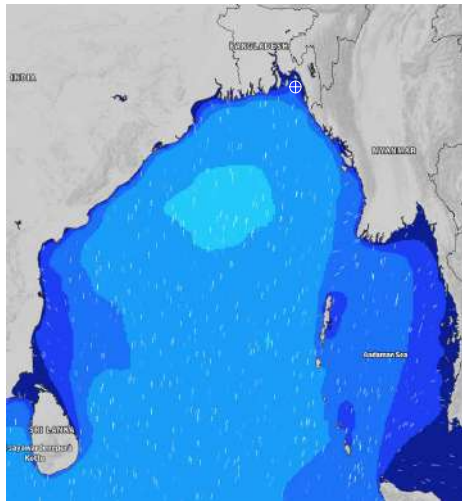
Date	Time	Max Wind Spd (kts)	Wind Direction	Wave Ht (m)	Sea State	Baro Pressure	Air Temp		Sea Surface Temp	Humidity (%)	Prob of Rain (%)	Sea State	Wave Ht (m)
							Max	Min					
03-08-24	0001	19	SSE	0.4	2	1006	29	26	27	91%	41% (0.4 mm)	0	0
	0600	18	SSE	0.4	2	1006			26	93%	22% (0.0 mm)	1	0 - 0.1
	1200	15	SSE	0.4	2	1007			27	85%	24% (0.1 mm)	2	0.1 - 0.5
	1800	16	SSE	0.4	2	1005			27	87%	48% (0.4 mm)	3	0.5 - 1.25
04-08-24	0001	16	SSE	0.4	2	1007	29	26	27	90%	66% (0.6 mm)	4	1.25 - 2.5
	0600	14	SSE	0.3	2	1007			28	91%	71% (0.7 mm)	5	2.5 - 4.0
	1200	13	S	0.3	2	1008			28	82%	74% (0.7 mm)	6	4.0 - 6.0
	1800	17	S	0.4	2	1005			27	87%	43% (0.4 mm)	7	6.0 - 9.0
05-08-24	0001	12	SSE	0.3	2	1008	29	26	27	90%	62% (0.6 mm)	8	9.0 - 14.0
	0600	10	SSE	0.2	2	1007			26	93%	58% (0.6 mm)	9	Over 14.0
	1200	10	S	0.3	2	1008			28	86%	60% (0.6 mm)		
	1800	12	SSE	0.3	2	1006			27	88%	41% (0.4 mm)		
06-08-24	0001	12	SSE	0.3	2	1007	29	26	27	91%	70% (0.7 mm)		
	0600	11	SSE	0.3	2	1005			26	93%	67% (0.7 mm)		
	1200	10	SSE	0.2	2	1007			28	82%	63% (0.6 mm)		
	1800	13	SSE	0.3	2	1005			27	87%	48% (0.5 mm)		

03 Aug 24 Sat (Probability 98%)

04 Aug 24 Sun (Probability 95%)

05 Aug 24 Mon (Probability 90%)

06 Aug 24 Tue (Probability 80%)



Significant wave height (m)

MARINE WEATHER FORECAST- NEAR AUTHORITY BUOY (Lat 22° 12'N, Long 091° 38'E)

DATE : 03 to 10 Aug 2024

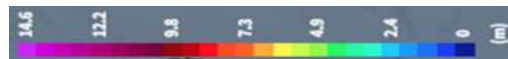
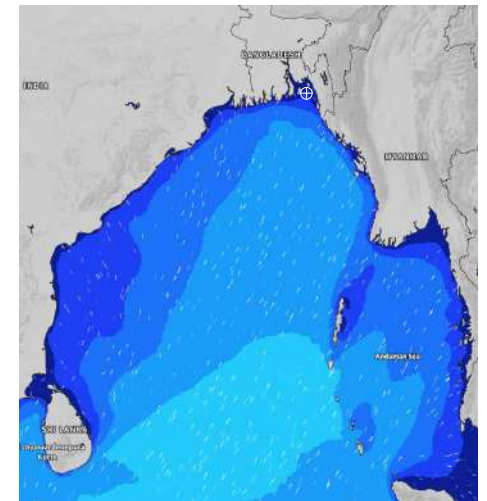
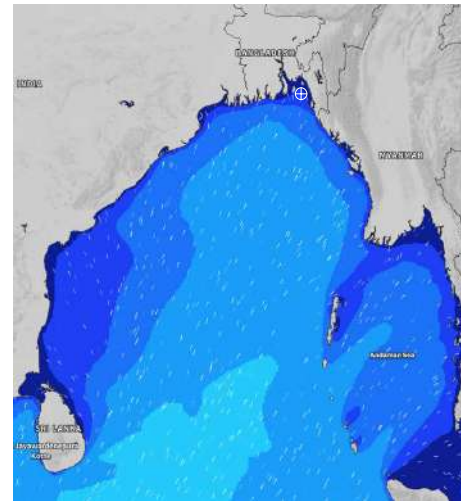
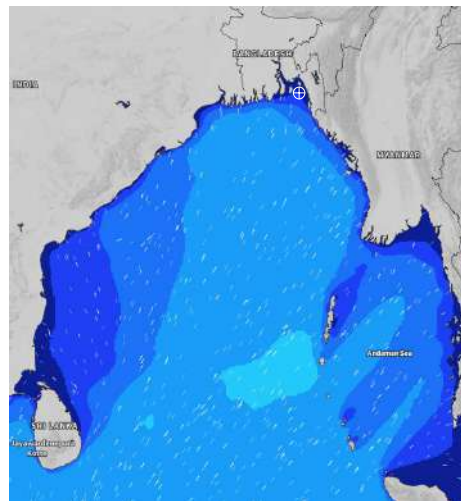
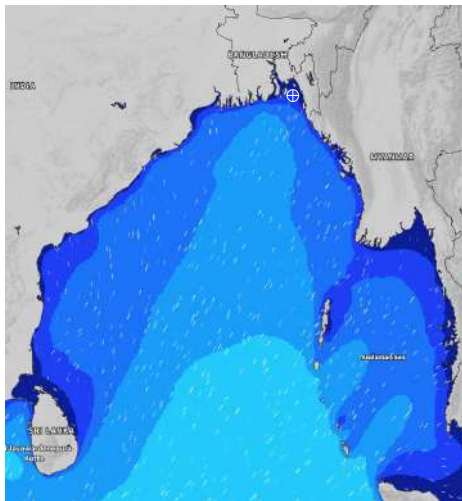
Date	Time	Max Wind Spd (kts)	Wind Direction	Wave Ht (m)	Sea State	Baro Pressure	Air Temp		Sea Surface Temp	Humidity (%)	Prob of Rain (%)	Sea State	Wave Ht (m)
							Max	Min					
07-08-24	0001	16	SE	0.4	2	1006	30	26	27	91%	59% (0.7 mm)	0	0
	0600	13	SSE	0.3	2	1006			26	93%	55% (0.7 mm)	1	0 - 0.1
	1200	16	S	0.3	2	1007			27	84%	66% (0.8 mm)	2	0.1 - 0.5
	1800	16	S	0.4	2	1005			28	87%	54% (0.7 mm)	3	0.5 - 1.25
08-08-24	0001	17	SSE	0.4	2	1007	30	26	27	90%	63% (0.7 mm)	4	1.25 - 2.5
	0600	16	SSE	0.4	2	1006			27	92%	69% (0.7 mm)	5	2.5 - 4.0
	1200	16	S	0.4	2	1007			28	86%	73% (0.7 mm)	6	4.0 - 6.0
	1800	16	S	0.4	2	1005			27	87%	57% (0.6 mm)	7	6.0 - 9.0
09-08-24	0001	15	SSE	0.4	2	1007	30	26	27	92%	68% (0.7 mm)	8	9.0 - 14.0
	0600	15	SSE	0.4	2	1006			27	93%	71% (0.7 mm)	9	Over 14.0
	1200	16	S	0.4	2	1007			28	84%	76% (0.7 mm)		
	1800	14	S	0.3	2	1004			27	88%	51% (0.5 mm)		
10-08-24	0001	15	SSE	0.4	2	1005	30	26	27	90%	68% (0.7 mm)		
	0600	15	SE	0.3	2	1004			27	92%	60% (0.6 mm)		
	1200	16	SSE	0.4	2	1005			28	84%	62% (0.6 mm)		
	1800	14	SSE	0.3	2	1004			27	88%	38% (0.4 mm)		

07 Aug 24 Wed (Probability 70%)

08 Aug 24 Thu (Probability 60%)

09 Aug 24 Fri (Probability 50%)

10 Aug 24 Sat (Probability 50%)



Significant wave height (m)

MARINE WEATHER FORECAST- 20 NM WEST OF ELEPHANT POINT (Lat 21° 10'N, Long 091° 42'E)

DATE : 03 to 10 Aug 2024

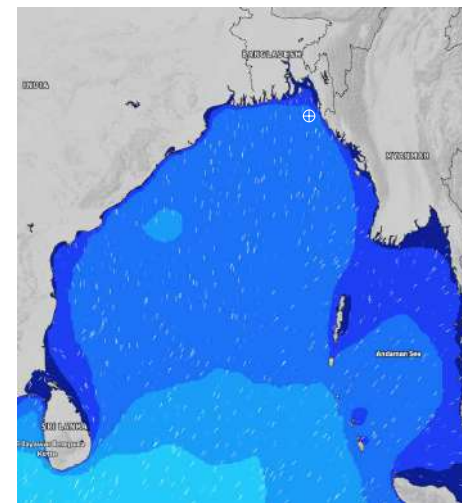
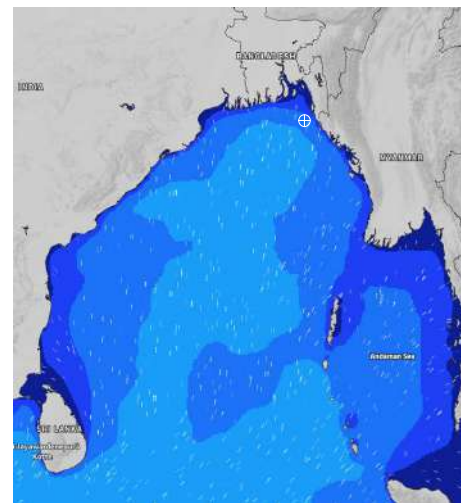
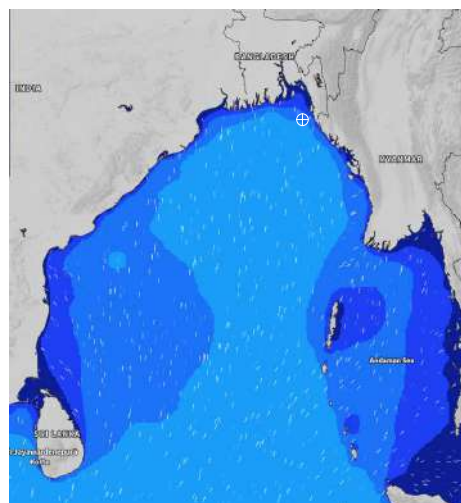
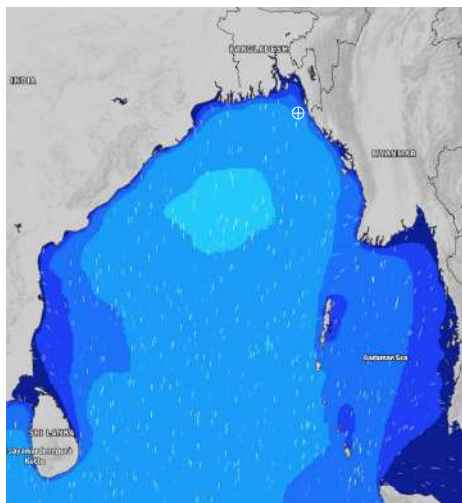
Date	Time	Max Wind Spd (kts)	Wind Direction	Wave Ht (m)	Sea State	Baro Pressure	Air Temp		Sea Surface Temp	Humidity (%)	Prob of Rain (%)	Sea State	Wave Ht (m)
							Max	Min					
03-08-24	0001	18	SSE	1.9	4	1006	29	26	27	91%	64% (0.6 mm)	0	0
	0600	19	SSE	1.8	4	1006			27	93%	44% (0.4 mm)	1	0 - 0.1
	1200	20	SSE	1.8	4	1007			28	85%	98% (5.2 mm)	2	0.1 - 0.5
	1800	15	SSE	1.6	4	1005			28	88%	47% (0.5 mm)	3	0.5 - 1.25
04-08-24	0001	18	SSE	1.7	4	1007	29	26	27	90%	67% (0.7 mm)	4	1.25 - 2.5
	0600	17	SE	1.6	4	1007			27	94%	72% (0.7 mm)	5	2.5 - 4.0
	1200	15	SSE	1.6	4	1006			28	84%	70% (0.7 mm)	6	4.0 - 6.0
	1800	15	SSE	1.5	4	1005			28	88%	40% (0.4 mm)	7	6.0 - 9.0
05-08-24	0001	15	SSE	1.5	4	1008	30	26	27	91%	60% (0.6 mm)	8	9.0 - 14.0
	0600	12	SSE	1.3	4	1007			27	94%	76% (0.8 mm)	9	Over 14.0
	1200	10	SSE	1.2	3	1007			28	83%	57% (0.6 mm)		
	1800	8	S	1.1	3	1006			28	87%	36% (0.2 mm)		
06-08-24	0001	7	S	1.1	3	1007	30	26	27	90%	81% (0.8 mm)		
	0600	5	S	1.1	3	1005			27	93%	64% (0.6 mm)		
	1200	7	SE	1.1	3	1007			28	85%	74% (0.7 mm)		
	1800	8	SSE	1.1	3	1005			28	89%	44% (0.5 mm)		

03 Aug 24 Sat (Probability 98%)

04 Aug 24 Sun (Probability 95%)

05 Aug 24 Mon (Probability 90%)

06 Aug 24 Tue (Probability 80%)



Significant wave height (m)

MARINE WEATHER FORECAST- 20 NM WEST OF ELEPHANT POINT (Lat 21° 10'N, Long 091° 42'E)

DATE : 03 to 10 Aug 2024

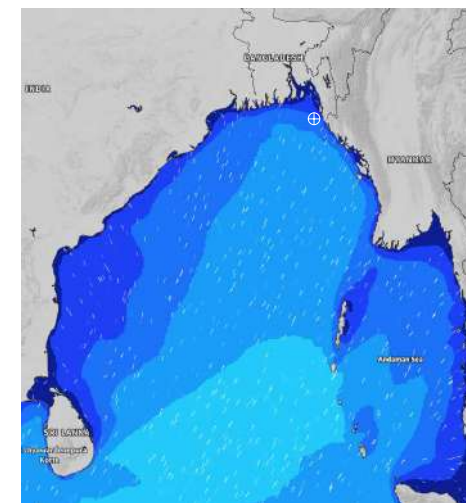
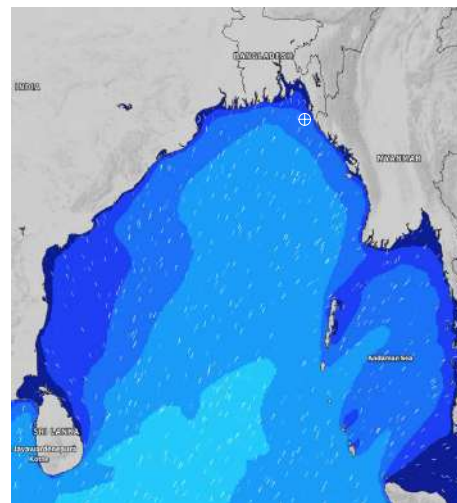
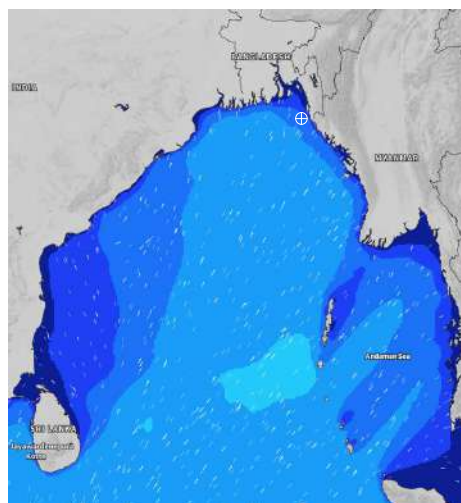
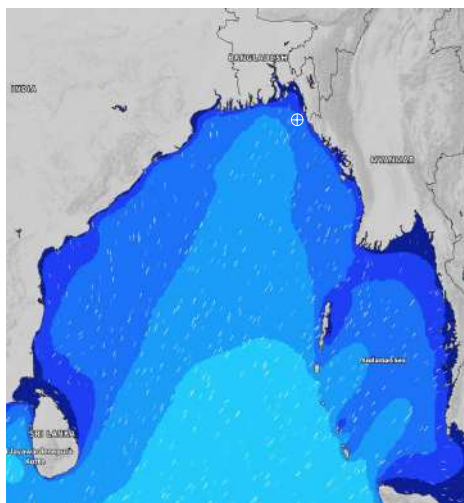
Date	Time	Max Wind Spd (kts)	Wind Direction	Wave Ht (m)	Sea State	Baro Pressure	Air Temp		Sea Surface Temp	Humidity (%)	Prob of Rain (%)	Sea State	Wave Ht (m)
							Max	Min					
07-08-24	0001	10	S	1.1	3	1006	30	26	28	92%	58% (0.6 mm)	0	0
	0600	14	SE	1.1	3	1006			27	94%	80% (1.2 mm)	1	0 - 0.1
	1200	17	SSE	1.3	4	1007			28	82%	76% (0.8 mm)	2	0.1 - 0.5
	1800	16	S	1.3	4	1005			28	89%	69% (0.7 mm)	3	0.5 - 1.25
08-08-24	0001	12	S	1.3	4	1007	30	26	27	91%	68% (0.7 mm)	4	1.25 - 2.5
	0600	13	S	1.4	4	1006			27	93%	84% (1.5 mm)	5	2.5 - 4.0
	1200	14	SSW	1.5	4	1007			28	84%	74% (1.1 mm)	6	4.0 - 6.0
	1800	15	SSW	1.6	4	1006			28	88%	55% (0.6 mm)	7	6.0 - 9.0
09-08-24	0001	15	SSW	1.6	4	1007	30	26	28	90%	73% (0.8 mm)	8	9.0 - 14.0
	0600	14	SSW	1.6	4	1006			27	94%	65% (0.7 mm)	9	Over 14.0
	1200	13	SSW	1.6	4	1007			28	82%	61% (0.6 mm)		
	1800	12	SSW	1.6	4	1005			28	88%	44% (0.5 mm)		
10-08-24	0001	10	S	1.5	4	1005	30	26	28	91%	64% (0.6 mm)		
	0600	12	SSW	1.5	4	1004			27	95%	66% (0.6 mm)		
	1200	15	SW	1.5	4	1005			28	86%	56% (0.6 mm)		
	1800	13	SSW	1.4	4	1004			28	88%	40% (0.4 mm)		

07 Aug 24 Wed (Probability 70%)

08 Aug 24 Thu (Probability 60%)

09 Aug 24 Fri (Probability 50%)

10 Aug 24 Sat (Probability 50%)



Significant wave height (m)

MARINE WEATHER FORECAST- 15 NM WEST OF ST. MARTIN'S LIGHT HOUSE (Lat 20° 37'N, Long 092° 03'E)

DATE : 03 to 10 Aug 2024

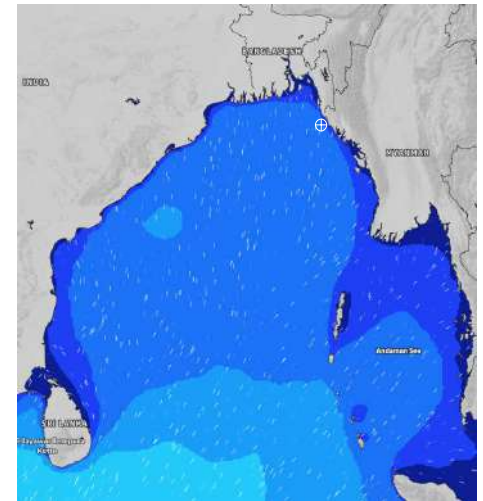
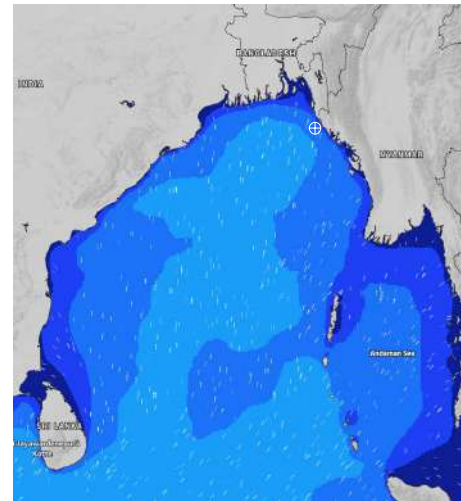
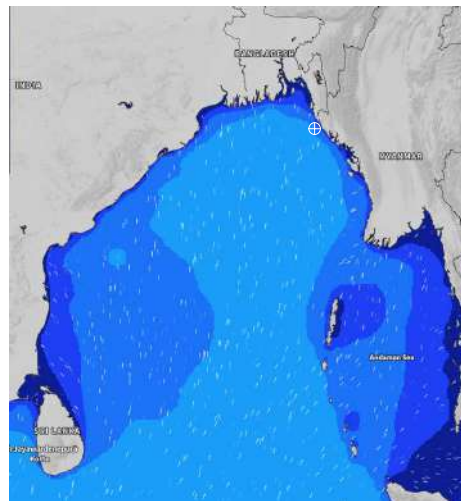
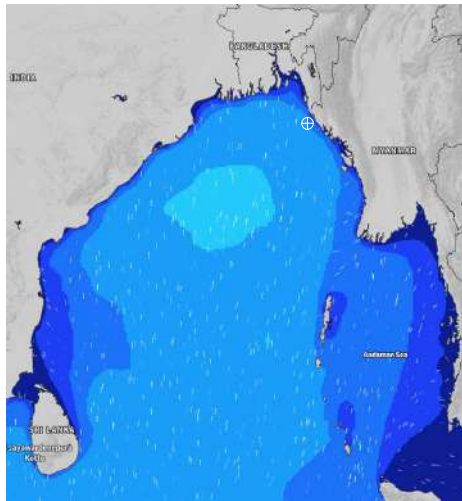
Date	Time	Max Wind Spd (kts)	Wind Direction	Wave Ht (m)	Sea State	Baro Pressure	Air Temp		Sea Surface Temp	Humidity (%)	Prob of Rain(%)	Sea State	Wave Ht (m)
							Max	Min					
03-08-24	0001	14	SSE	2.1	4	1007	29	26	28	91%	85% (1.5 mm)	0	0
	0600	13	SSE	2.0	4	1006			27	93%	65% (0.7 mm)	1	0 - 0.1
	1200	14	SSE	1.9	4	1007			28	82%	81% (2.6 mm)	2	0.1 - 0.5
	1800	12	S	1.9	4	1005			28	88%	69% (0.7 mm)	3	0.5 - 1.25
04-08-24	0001	13	SSE	1.9	4	1008	29	26	28	90%	95% (2.4 mm)	4	1.25 - 2.5
	0600	9	SE	1.9	4	1006			27	94%	79% (0.8 mm)	5	2.5 - 4.0
	1200	9	SE	1.8	4	1007			28	85%	70% (0.8 mm)	6	4.0 - 6.0
	1800	12	SE	1.7	4	1006			28	90%	62% (0.7 mm)	7	6.0 - 9.0
05-08-24	0001	11	S	1.6	4	1008	29	26	28	92%	70% (0.7 mm)	8	9.0 - 14.0
	0600	7	SSE	1.6	4	1007			27	95%	79% (0.8 mm)	9	Over 14.0
	1200	6	SSW	1.4	4	1008			28	84%	75% (0.8 mm)		
	1800	7	SW	1.4	4	1006			28	88%	40% (0.5 mm)		
06-08-24	0001	10	SW	1.4	4	1008	29	26	28	92%	81% (0.8 mm)		
	0600	10	SW	1.4	4	1005			27	95%	88% (0.9 mm)		
	1200	9	SSW	1.4	4	1007			28	82%	75% (0.8 mm)		
	1800	7	SSW	1.4	4	1006			28	89%	64% (0.7 mm)		

03 Aug 24 Sat (Probability 98%)

04 Aug 24 Sun (Probability 95%)

05 Aug 24 Mon (Probability 90%)

06 Aug 24 Tue (Probability 80%)



Significant wave height (m)

MARINE WEATHER FORECAST- 15 NM WEST OF ST. MARTIN'S LIGHT HOUSE (Lat 20° 37'N, Long 092° 03'E)

DATE : 03 to 10 Aug 2024

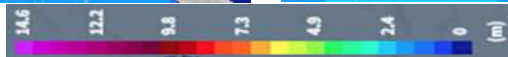
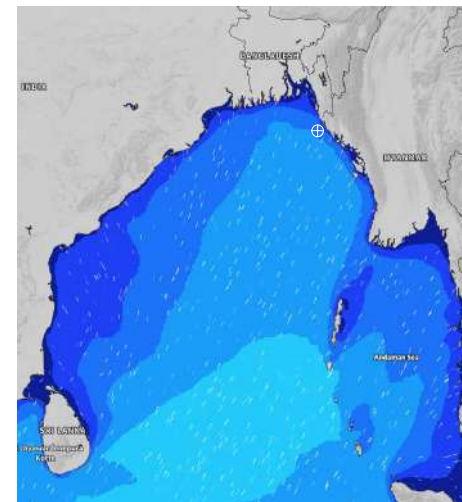
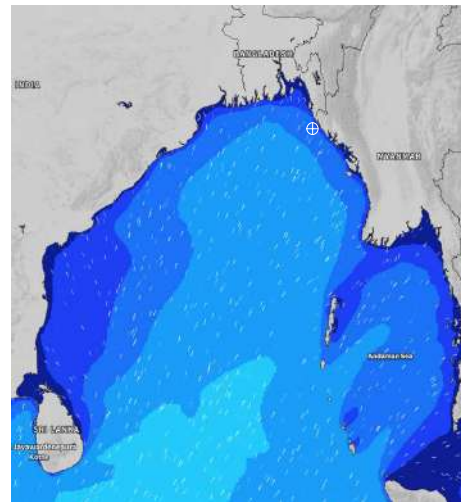
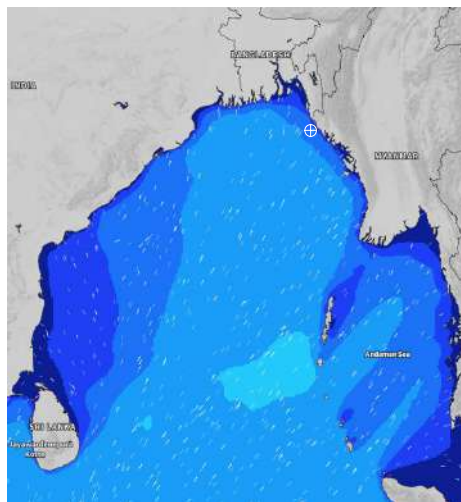
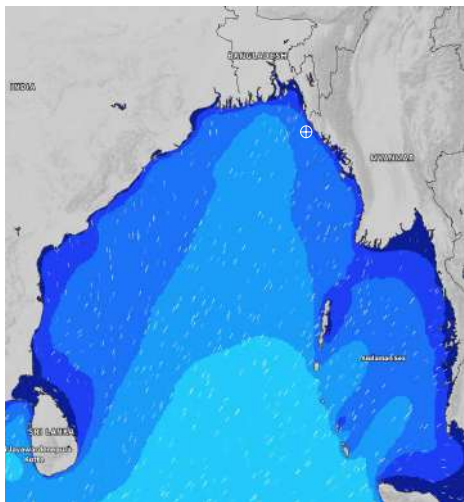
Date	Time	Max Wind Spd (kts)	Wind Direction	Wave Ht (m)	Sea State	Baro Pressure	Air Temp		Sea Surface Temp	Humidity (%)	Prob of Rain (%)	Sea State	Wave Ht (m)
							Max	Min					
07-08-24	0001	10	SSW	1.4	4	1007	29	26	28	90%	70% (0.7 mm)	0	0
	0600	9	SSE	1.3	4	1005			27	93%	91% (1.5 mm)	1	0 - 0.1
	1200	13	S	1.3	4	1008			28	81%	76% (0.8 mm)	2	0.1 - 0.5
	1800	15	S	1.4	4	1005			28	86%	83% (0.8 mm)	3	0.5 - 1.25
08-08-24	0001	14	SSW	1.6	4	1008	30	27	28	91%	87% (0.9 mm)	4	1.25 - 2.5
	0600	12	SSW	1.6	4	1006			27	93%	85% (0.9 mm)	5	2.5 - 4.0
	1200	13	SSW	1.8	4	1008			28	82%	79% (0.8 mm)	6	4.0 - 6.0
	1800	15	SSW	1.9	4	1006			28	88%	77% (0.8 mm)	7	6.0 - 9.0
09-08-24	0001	14	SSW	1.9	4	1008	30	27	28	90%	78% (0.8 mm)	8	9.0 - 14.0
	0600	15	SW	1.9	4	1006			27	94%	75% (0.8 mm)	9	Over 14.0
	1200	12	SSW	1.9	4	1007			28	83%	63% (0.7 mm)		
	1800	13	SW	1.9	4	1004			28	87%	50% (0.6 mm)		
10-08-24	0001	13	SSW	1.9	4	1006	30	27	28	91%	68% (0.7 mm)		
	0600	11	SW	1.8	4	1004			27	93%	66% (0.7 mm)		
	1200	9	SSW	1.7	4	1005			28	82%	51% (0.5 mm)		
	1800	10	SW	1.8	4	1004			28	89%	37% (0.4 mm)		

07 Aug 24 Wed (Probability 70%)

08 Aug 24 Thu (Probability 60%)

09 Aug 24 Fri (Probability 50%)

10 Aug 24 Sat (Probability 50%)



Significant wave height (m)

MARINE WEATHER FORECAST- 40 NM ESE OF PAYRA FAIRWAY (Lat 21° 07' N, Long 090° 45' E)

DATE : 03 to 10 Aug 2024

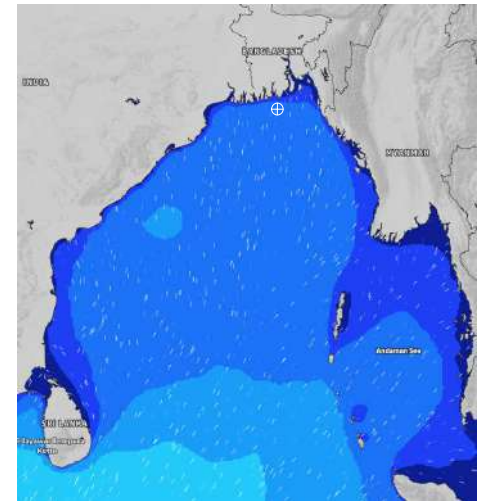
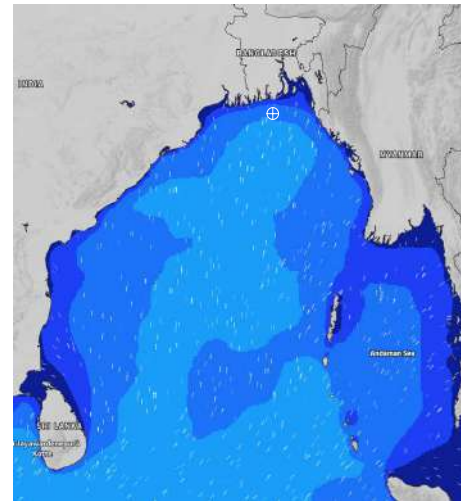
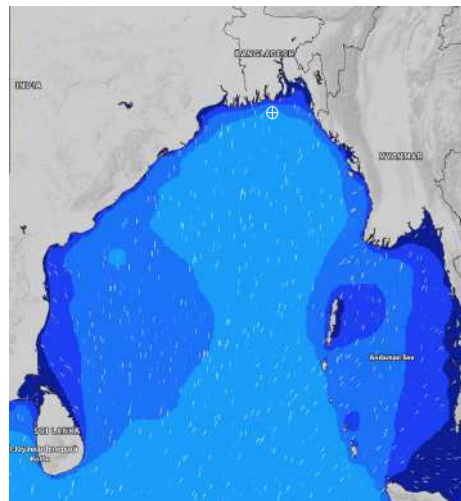
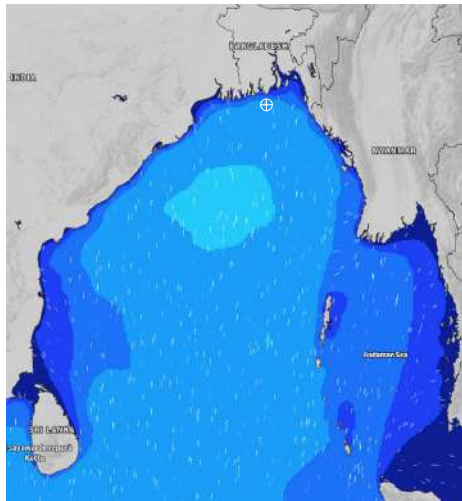
Date	Time	Max Wind Spd (kts)	Wind Direction	Wave Ht (m)	Sea State	Baro Pressure	Air Temp		Sea Surface Temp	Humidity (%)	Prob of Rain (%)	Sea State	Wave Ht (m)
							Max	Min					
03-08-24	0001	19	S	2.4	4	1005	29	26	28	92%	84% (0.8 mm)	0	0
	0600	15	S	2.3	4	1004			27	94%	86% (0.9 mm)	1	0 - 0.1
	1200	16	S	2.2	4	1006			28	82%	94% (1.9 mm)	2	0.1 - 0.5
	1800	14	S	2.1	4	1004			28	90%	52% (0.5 mm)	3	0.5 - 1.25
04-08-24	0001	14	SSW	2.1	4	1006	29	26	28	91%	81% (0.8 mm)	4	1.25 - 2.5
	0600	9	S	1.8	4	1006			27	93%	87% (1.9 mm)	5	2.5 - 4.0
	1200	12	SSW	1.9	4	1007			28	84%	86% (1.5 mm)	6	4.0 - 6.0
	1800	12	S	1.7	4	1005			28	89%	48% (0.5 mm)	7	6.0 - 9.0
05-08-24	0001	10	SSW	1.6	4	1007	29	26	28	92%	72% (0.7 mm)	8	9.0 - 14.0
	0600	7	WSW	1.5	4	1007			27	95%	86% (1.5 mm)	9	Over 14.0
	1200	8	SW	1.5	4	1006			28	88%	73% (0.8 mm)		
	1800	9	SSW	1.5	4	1005			28	90%	45% (0.5 mm)		
06-08-24	0001	13	SSW	1.5	4	1007	29	26	28	91%	78% (0.8 mm)		
	0600	13	S	1.5	4	1005			27	95%	64% (0.7 mm)		
	1200	8	SSW	1.4	4	1006			28	86%	81% (0.8 mm)		
	1800	9	SSW	1.4	4	1005			28	90%	51% (0.5 mm)		

03 Aug 24 Sat (Probability 98%)

04 Aug 24 Sun (Probability 95%)

05 Aug 24 Mon (Probability 90%)

06 Aug 24 Tue (Probability 80%)



Significant wave height (m)

MARINE WEATHER FORECAST- 40 NM ESE OF PAYRA FAIRWAY (Lat 21° 07' N, Long 090° 45' E)

DATE : 03 to 10 Aug 2024

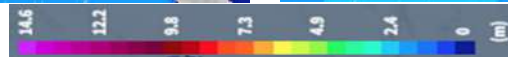
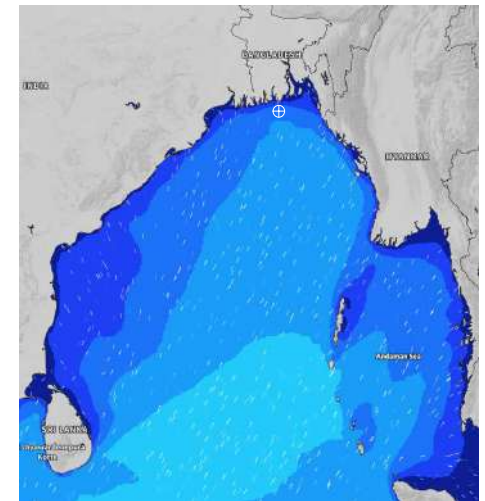
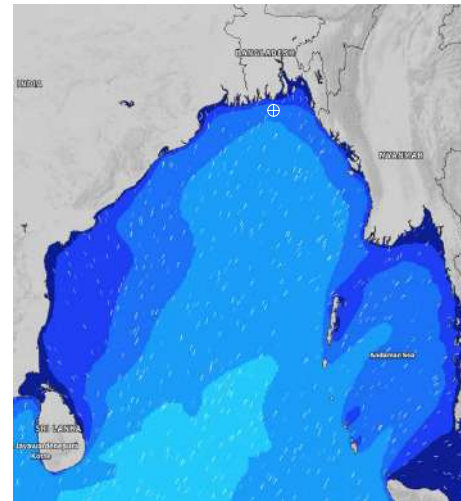
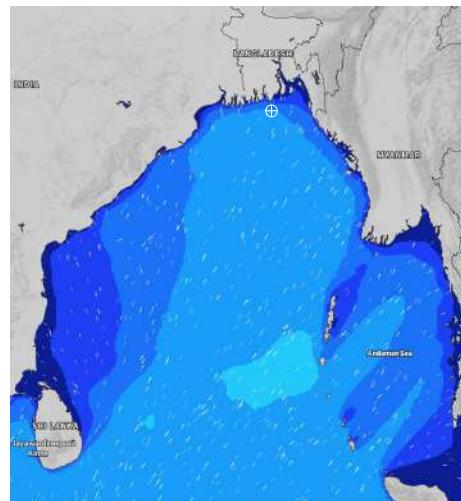
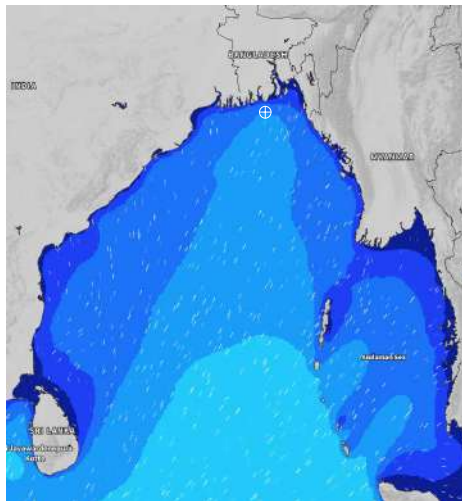
Date	Time	Max Wind Spd (kts)	Wind Direction	Wave Ht (m)	Sea State	Baro Pressure	Air Temp		Sea Surface Temp	Humidity (%)	Prob of Rain (%)	Sea State	Wave Ht (m)
							Max	Min					
07-08-24	0001	12	SW	1.5	4	1006	29	26	28	90%	70% (0.6 mm)	0	0
	0600	8	S	1.4	4	1005			27	93%	62% (0.6 mm)	1	0 - 0.1
	1200	13	S	1.3	4	1006			28	82%	66% (0.6 mm)	2	0.1 - 0.5
	1800	14	SSW	1.5	4	1004			28	89%	55% (0.5 mm)	3	0.5 - 1.25
08-08-24	0001	17	SSW	1.6	4	1006	30	27	28	91%	64% (0.7 mm)	4	1.25 - 2.5
	0600	18	SSW	2.0	4	1006			27	94%	63% (0.6 mm)	5	2.5 - 4.0
	1200	18	SSW	2.1	4	1007			28	85%	66% (0.6 mm)	6	4.0 - 6.0
	1800	19	SSW	2.2	4	1005			28	88%	55% (0.5 mm)	7	6.0 - 9.0
09-08-24	0001	18	SSW	2.2	4	1006	30	27	28	90%	79% (0.7 mm)	8	9.0 - 14.0
	0600	17	SW	2.2	4	1005			27	95%	84% (0.8 mm)	9	Over 14.0
	1200	15	SW	2.1	4	1006			28	86%	66% (0.6 mm)		
	1800	16	SW	2.0	4	1004			28	89%	42% (0.4 mm)		
10-08-24	0001	13	SSW	2.0	4	1004	30	27	28	91%	86% (0.6 mm)		
	0600	11	SW	2.0	4	1003			27	94%	64% (0.6 mm)		
	1200	12	SSW	2.0	4	1004			28	84%	64% (0.6 mm)		
	1800	13	SSW	2.0	4	1003			28	88%	40% (0.4 mm)		

07 Aug 24 Wed (Probability 70%)

08 Aug 24 Thu (Probability 60%)

09 Aug 24 Fri (Probability 50%)

10 Aug 24 Sat (Probability 50%)



Significant wave height (m)

MARINE WEATHER FORECAST- 10 NM SOUTH OF MONGLA FAIRWAY (Lat 21° 16'N, Long 089° 34'E)

DATE : 03 to 10 Aug 2024

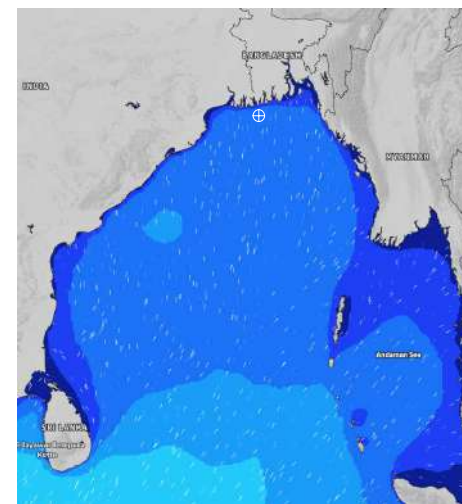
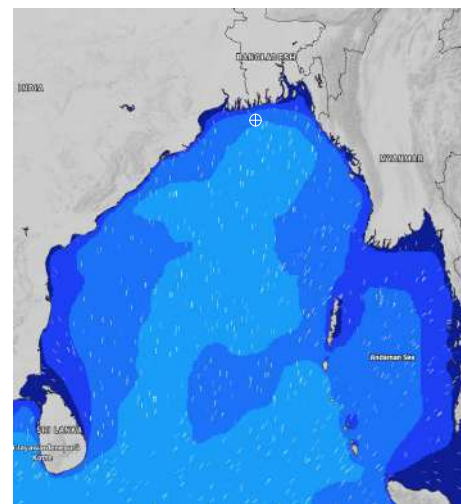
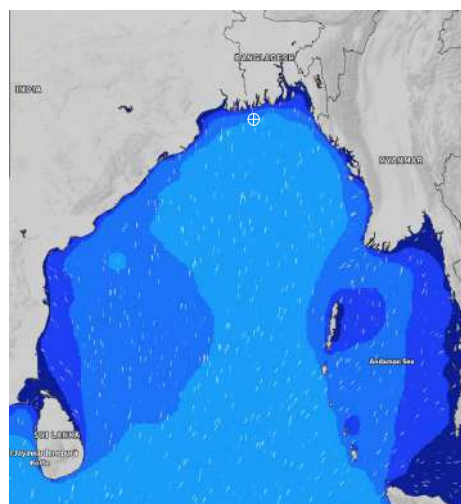
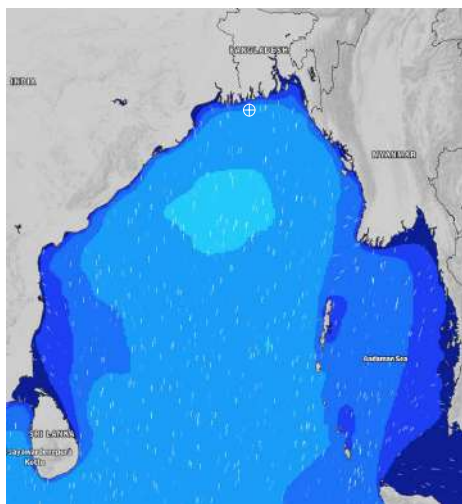
Date	Time	Max Wind Spd (kts)	Wind Direction	Wave Ht (m)	Sea State	Baro Pressure	Air Temp		Sea Surface Temp	Humidity (%)	Prob of Rain (%)	Sea State	Wave Ht (m)
							Max	Min					
03-08-24	0001	20	SSW	2.4	4	1004	29	26	28	92%	46% (0.5 mm)	0	0
	0600	18	SSW	2.3	4	1003			28	94%	52% (0.5 mm)	1	0 - 0.1
	1200	16	S	2.1	4	1004			29	85%	92% (1.5 mm)	2	0.1 - 0.5
	1800	16	SSW	2.0	4	1003			29	90%	42% (0.4 mm)	3	0.5 - 1.25
04-08-24	0001	17	SSW	2.1	4	1006	29	26	28	93%	46% (0.5 mm)	4	1.25 - 2.5
	0600	12	SSW	2.0	4	1005			28	95%	58% (0.6 mm)	5	2.5 - 4.0
	1200	13	SW	1.9	4	1006			29	82%	87% (1.5 mm)	6	4.0 - 6.0
	1800	12	SSW	1.8	4	1005			29	87%	32% (0.2 mm)	7	6.0 - 9.0
05-08-24	0001	13	SSW	1.7	4	1007	30	27	28	91%	46% (0.5 mm)	8	9.0 - 14.0
	0600	10	SW	1.5	4	1006			28	94%	53% (0.5 mm)	9	Over 14.0
	1200	10	SSW	1.5	4	1007			29	83%	84% (0.8 mm)		
	1800	12	SSW	1.4	4	1005			29	89%	43% (0.4 mm)		
06-08-24	0001	15	SSW	1.4	4	1006	30	27	29	90%	51% (0.5 mm)		
	0600	10	SSW	1.3	4	1004			28	93%	62% (0.6 mm)		
	1200	8	SSW	1.2	3	1006			29	82%	51% (0.5 mm)		
	1800	9	SSW	1.2	3	1004			29	88%	46% (0.4 mm)		

03 Aug 24 Sat (Probability 98%)

04 Aug 24 Sun (Probability 95%)

05 Aug 24 Mon (Probability 90%)

06 Aug 24 Tue (Probability 80%)



Significant wave height (m)

MARINE WEATHER FORECAST- 10 NM SOUTH OF MONGLA FAIRWAY (Lat 21° 16'N, Long 089° 34'E)

DATE : 03 to 10 Aug 2024

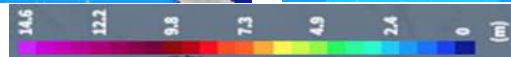
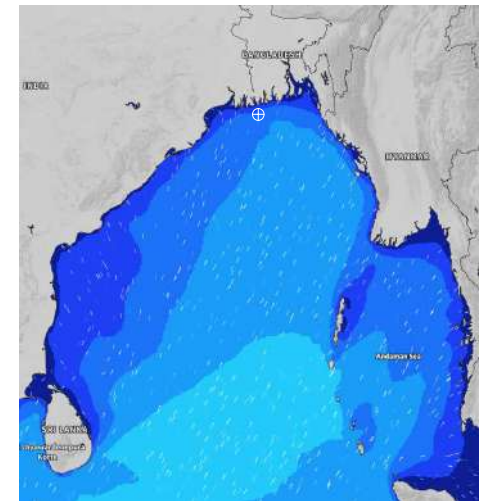
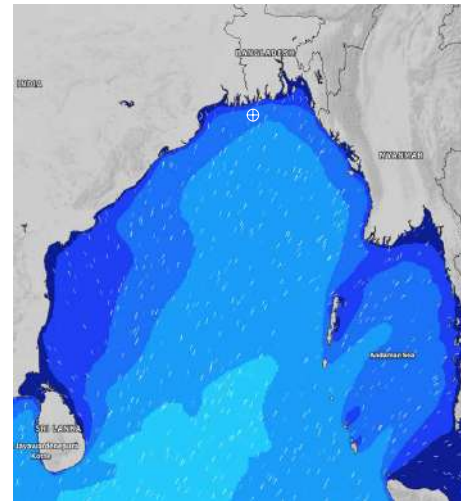
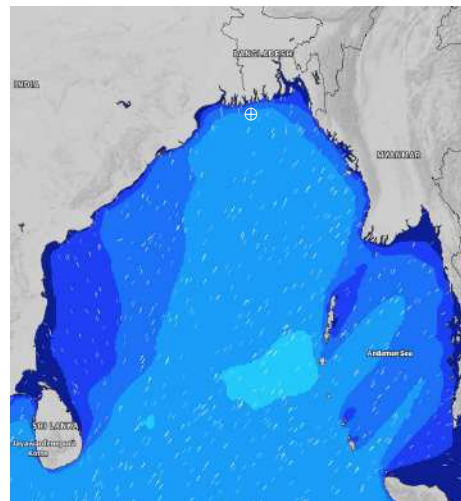
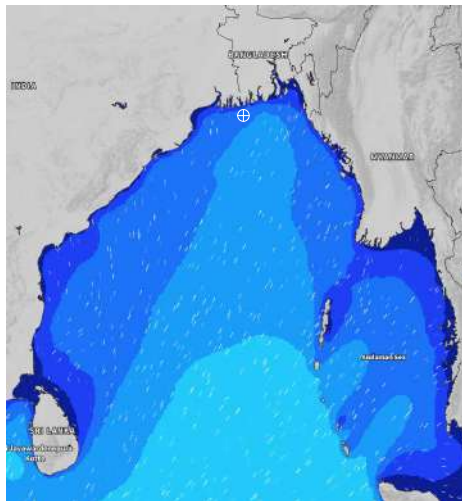
Date	Time	Max Wind Spd (kts)	Wind Direction	Wave Ht (m)	Sea State	Baro Pressure	Air Temp		Sea Surface Temp	Humidity (%)	Prob of Rain (%)	Sea State	Wave Ht (m)
							Max	Min					
07-08-24	0001	14	SSW	1.4	4	1005	30	27	28	91%	66% (0.6 mm)	0	0
	0600	9	SSW	1.2	3	1004			28	93%	61% (0.6 mm)	1	0 - 0.1
	1200	10	SSW	1.2	3	1006			29	81%	45% (0.5 mm)	2	0.1 - 0.5
	1800	14	SSW	1.3	4	1003			29	88%	38% (0.4 mm)	3	0.5 - 1.25
08-08-24	0001	16	SSW	1.5	4	1005	30	27	28	90%	47% (0.5 mm)	4	1.25 - 2.5
	0600	18	SSW	1.8	4	1004			28	94%	61% (0.6 mm)	5	2.5 - 4.0
	1200	20	SSW	2.2	4	1005			29	84%	56% (0.5 mm)	6	4.0 - 6.0
	1800	19	SSW	2.1	4	1005			29	89%	32% (0.3 mm)	7	6.0 - 9.0
09-08-24	0001	20	SSW	2.1	4	1004	30	27	29	91%	73% (0.7 mm)	8	9.0 - 14.0
	0600	17	SW	2.1	4	1005			28	93%	66% (0.7 mm)	9	Over 14.0
	1200	16	SSW	2.0	4	1004			29	82%	61% (0.6 mm)		
	1800	14	SSW	1.9	4	1003			29	88%	35% (0.3 mm)		
10-08-24	0001	14	SW	1.8	4	1003	30	27	29	92%	54% (0.5 mm)		
	0600	13	SW	1.7	4	1002			28	95%	61% (0.6 mm)		
	1200	11	WSW	1.7	4	1003			29	83%	58% (0.6 mm)		
	1800	12	SSW	1.7	4	1002			29	87%	36% (0.3 mm)		

07 Aug 24 Wed (Probability 70%)

08 Aug 24 Thu (Probability 60%)

09 Aug 24 Fri (Probability 50%)

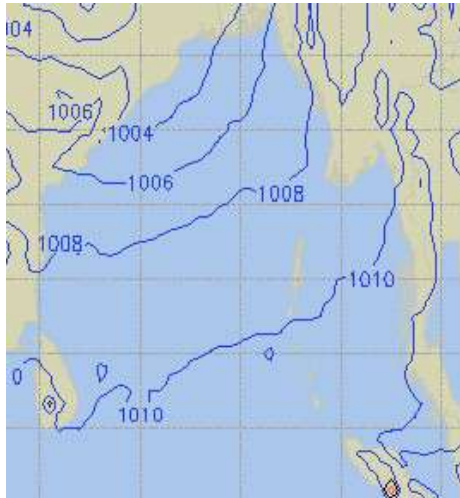
10 Aug 24 Sat (Probability 50%)



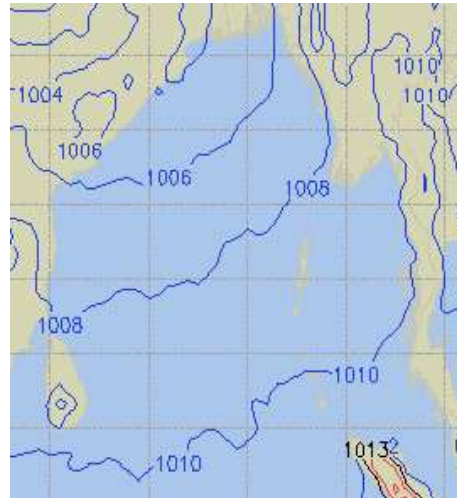
Significant wave height (m)

PREDICTED SURFACE PRESSURE FORECAST (03 Aug to 09 Aug 2024)

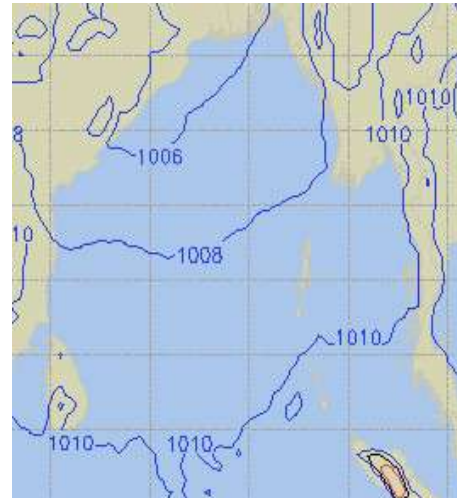
03 Aug 24 Sat (Probability 98%)



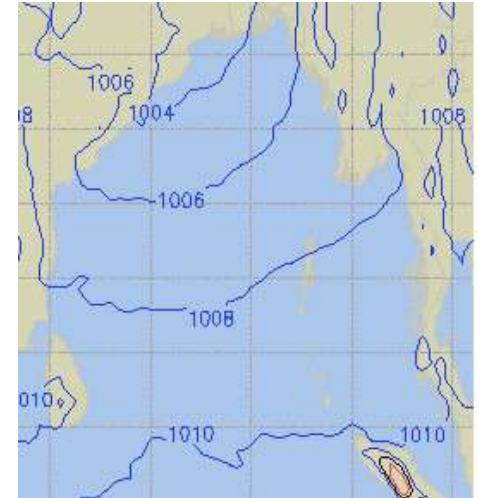
04 Aug 24 Sun (Probability 95%)



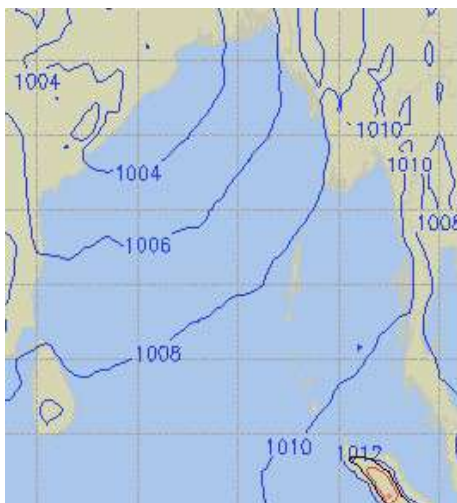
05 Aug 24 Mon (Probability 90%)



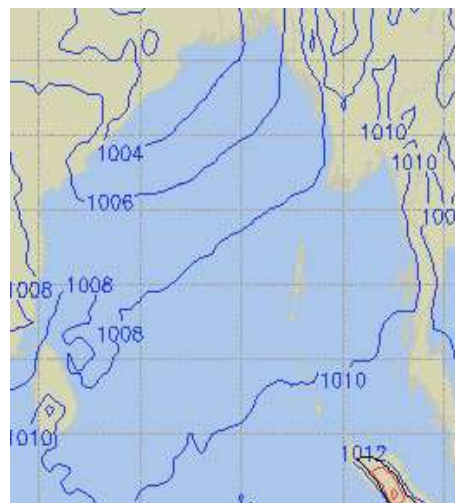
06 Aug 24 Tue (Probability 80%)



07 Aug 24 Wed (Probability 70%)



08 Thu 24 Thu (Probability 60%)



09 Thu 24 Fri (Probability 50%)

