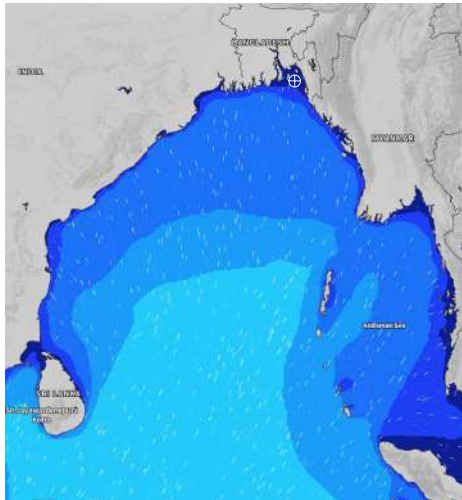


MARINE WEATHER FORECAST- NEAR AUTHORITY BUOY (Lat 22° 12'N, Long 091° 38'E)

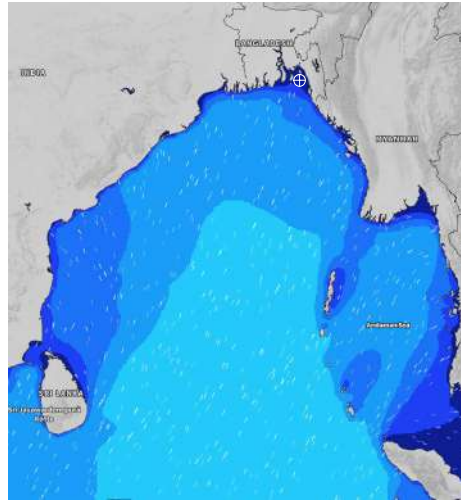
DATE : 03 to 10 June 2024

Date	Time	Max Wind Spd (kts)	Wind Direction	Wave Ht (m)	Sea State	Baro Pressure	Air Temp		Sea Surface Temp	Humidity (%)	Prb of Rain (%)	Sea State	Wave Ht (m)
							Max	Min					
03-06-24	0001	13	S	0.2	2	1007	34	27	30	91%	51% (3.1 mm)	0	0
	0600	9	SSE	0.2	2	1007			29	95%	40% (0.5 mm)	1	0 - 0.1
	1200	9	S	0.2	2	1008			30	86%	24% (0.0 mm)	2	0.1 - 0.5
	1800	13	S	0.3	2	1004			29	89%	19% (0.0 mm)	3	0.5 - 1.25
04-06-24	0001	12	S	0.2	2	1007	34	27	30	86%	31% (0.5 mm)	4	1.25 - 2.5
	0600	12	SSE	0.3	2	1006			29	91%	30% (0.4 mm)	5	2.5 - 4.0
	1200	14	SSW	0.3	2	1007			30	85%	22% (0.0 mm)	6	4.0 - 6.0
	1800	16	S	0.3	2	1004			29	87%	18% (0.0 mm)	7	6.0 - 9.0
05-06-24	0001	17	SSE	0.3	2	1006	34	27	30	89%	21% (0.0 mm)	8	9.0 - 14.0
	0600	15	SE	0.3	2	1006			29	92%	24% (0.0 mm)	9	Over 14.0
	1200	11	SSW	0.2	2	1007			30	86%	21% (0.0 mm)		
	1800	12	SSW	0.2	2	1004			29	88%	16% (0.0 mm)		
06-06-24	0001	17	SSE	0.3	2	1006	34	27	30	88%	17% (0.0 mm)		
	0600	16	SE	0.3	2	1007			29	93%	19% (0.0 mm)		
	1200	15	S	0.3	2	1006			30	85%	20% (0.0 mm)		
	1800	13	SSW	0.3	2	1005			29	88%	15% (0.0 mm)		

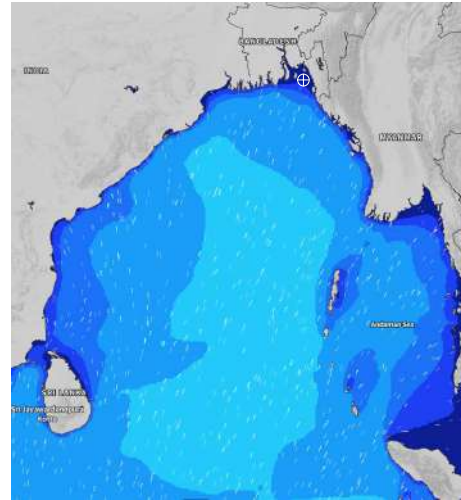
03 June 24 Mon (Probability 98%)



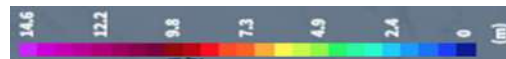
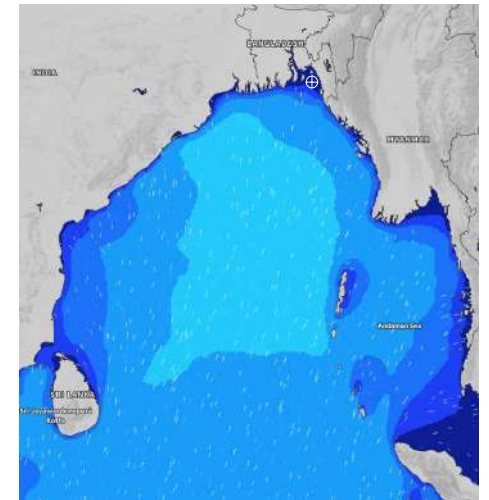
04 June 24 Tue (Probability 95%)



05 June 24 Wed (Probability 90%)



06 June 24 Thu (Probability 80%)



Significant wave height (m)

MARINE WEATHER FORECAST- NEAR AUTHORITY BUOY (Lat 22° 12'N, Long 091° 38'E)

DATE : 03 to 10 June 2024

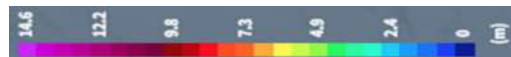
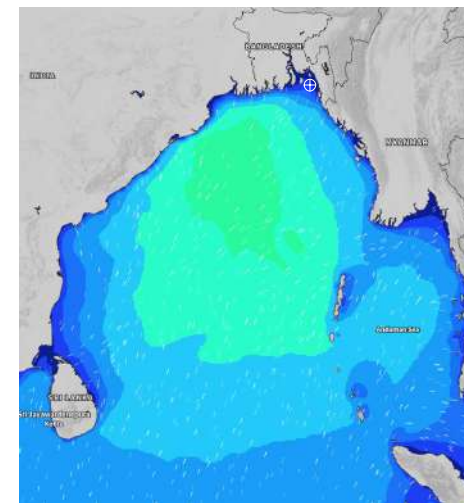
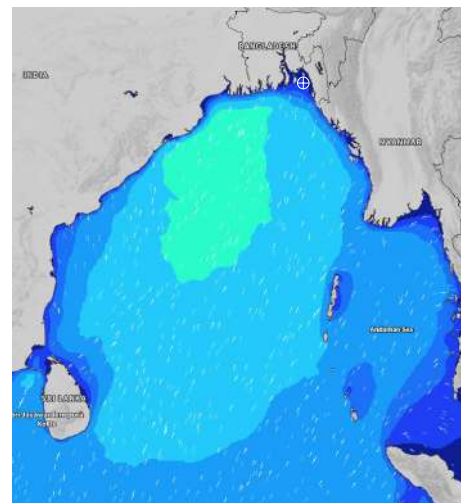
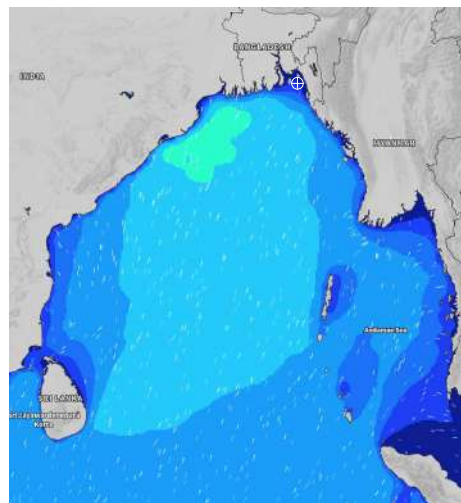
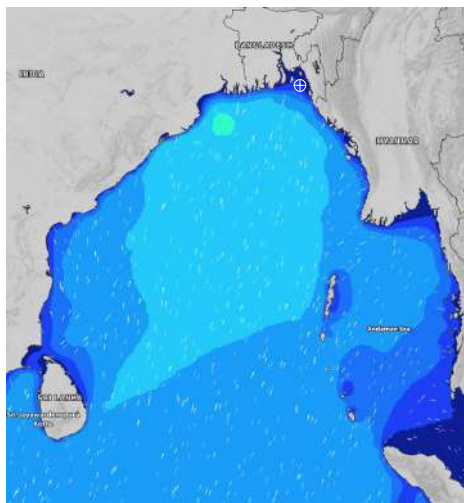
Date	Time	Max Wind Spd (kts)	Wind Direction	Wave Ht (m)	Sea State	Baro Pressure	Air Temp		Sea Surface Temp	Humidity (%)	Prob of Rain (%)	Sea State	Wave Ht (m)
							Max	Min					
07-06-24	0001	18	S	0.4	2	1005	34	27	29	88%	20% (0.0 mm)	0	0
	0600	13	SSE	0.3	2	1005			28	90%	16% (0.0 mm)	1	0 - 0.1
	1200	19	S	0.4	2	1006			29	77%	22% (0.0 mm)	2	0.1 - 0.5
	1800	20	S	0.4	2	1003			29	85%	23% (0.0 mm)	3	0.5 - 1.25
08-06-24	0001	21	SSE	0.4	2	1005	33	27	29	88%	18% (0.0 mm)	4	1.25 - 2.5
	0600	17	SE	0.3	2	1004			28	93%	15% (0.0 mm)	5	2.5 - 4.0
	1200	18	S	0.4	2	1005			29	76%	17% (0.0 mm)	6	4.0 - 6.0
	1800	21	S	0.4	2	1002			29	82%	16% (0.0 mm)	7	6.0 - 9.0
09-06-24	0001	23	SSE	0.4	2	1003	33	27	29	88%	18% (0.0 mm)	8	9.0 - 14.0
	0600	20	SE	0.4	2	1004			28	93%	17% (0.0 mm)	9	Over 14.0
	1200	22	SSW	0.4	2	1003			29	79%	19% (0.0 mm)		
	1800	22	S	0.4	2	1002			29	84%	18% (0.0 mm)		
10-06-24	0001	23	SSE	0.4	2	1003	33	27	29	89%	17% (0.0 mm)		
	0600	23	SE	0.4	2	1002			28	91%	18% (0.0 mm)		
	1200	24	SSE	0.4	2	1003			29	78%	19% (0.0 mm)		
	1800	21	SSE	0.4	2	1002			29	88%	16% (0.0 mm)		

07 June 24 Fri (Probability 70%)

08 June 24 Sat (Probability 60%)

09 June 24 Sun (Probability 50%)

10 June 24 Mon (Probability 50%)



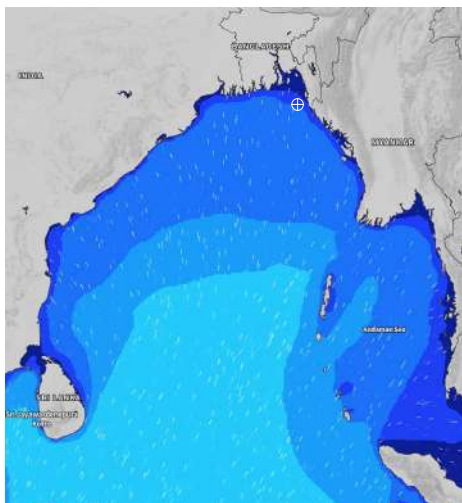
Significant wave height (m)

MARINE WEATHER FORECAST- 20 NM WEST OF ELEPHANT POINT (Lat 21° 10'N, Long 091° 42'E)

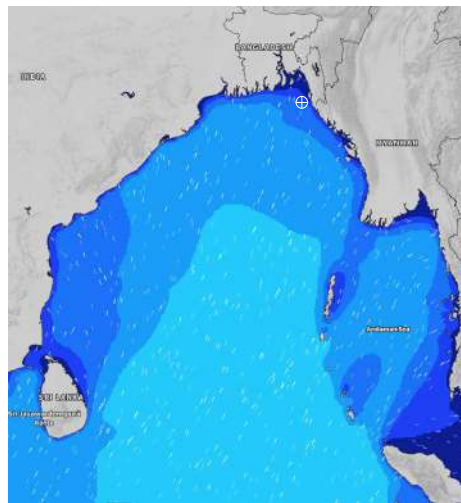
DATE : 03 to 10 June 2024

Date	Time	Max Wind Spd (kts)	Wind Direction	Wave Ht (m)	Sea State	Baro Pressure	Air Temp		Sea Surface Temp	Humidity (%)	Prob of Rain (%)	Sea State	Wave Ht (m)
							Max	Min					
03-06-24	0001	10	SSW	0.9	3	1007	34	27	29	88%	43% (0.4 mm)	0	0
	0600	7	SW	1.0	3	1007			29	93%	31% (0.2 mm)	1	0 - 0.1
	1200	7	SSW	1.1	3	1008			29	88%	20% (0.0 mm)	2	0.1 - 0.5
	1800	9	SSW	1.1	3	1005			29	89%	18% (0.0 mm)	3	0.5 - 1.25
04-06-24	0001	10	SSW	1.2	3	1007	34	27	29	89%	24% (0.0 mm)	4	1.25 - 2.5
	0600	11	S	1.2	3	1006			29	92%	22% (0.0 mm)	5	2.5 - 4.0
	1200	10	SSW	1.3	4	1007			30	86%	18% (0.0 mm)	6	4.0 - 6.0
	1800	13	S	1.4	4	1004			30	88%	17% (0.0 mm)	7	6.0 - 9.0
05-06-24	0001	11	SSE	1.4	4	1006	34	27	29	87%	21% (0.0 mm)	8	9.0 - 14.0
	0600	9	S	1.5	4	1006			29	95%	19% (0.0 mm)	9	Over 14.0
	1200	9	S	1.5	4	1007			30	84%	15% (0.0 mm)		
	1800	11	SSW	1.5	4	1005			30	88%	18% (0.0 mm)		
06-06-24	0001	14	SSE	1.5	4	1006	34	27	29	89%	22% (0.0 mm)		
	0600	8	SW	1.5	4	1007			29	95%	23% (0.0 mm)		
	1200	8	WSW	1.5	4	1006			30	83%	16% (0.0 mm)		
	1800	10	SSW	1.5	4	1005			30	89%	18% (0.0 mm)		

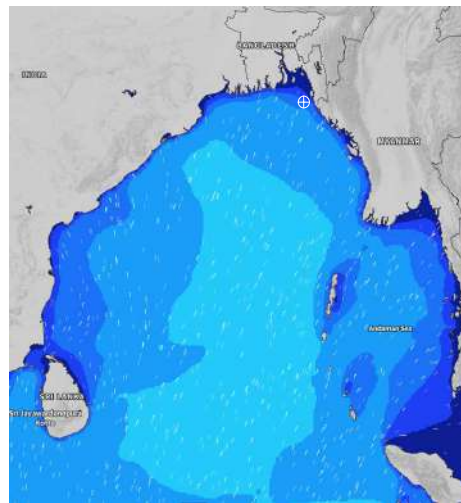
03 June 24 Mon (Probability 98%)



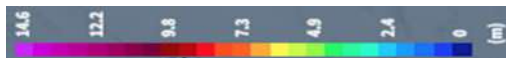
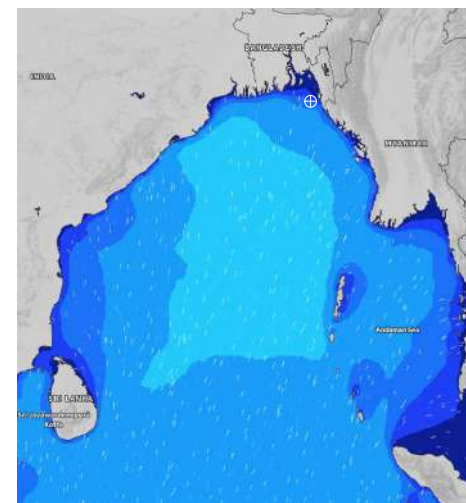
04 June 24 Tue (Probability 95%)



05 June 24 Wed (Probability 90%)



06 June 24 Thu (Probability 80%)



Significant wave height (m)

MARINE WEATHER FORECAST- 20 NM WEST OF ELEPHANT POINT (Lat 21° 10'N, Long 091° 42'E)

DATE : 03 to 10 June 2024

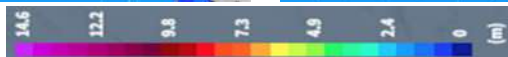
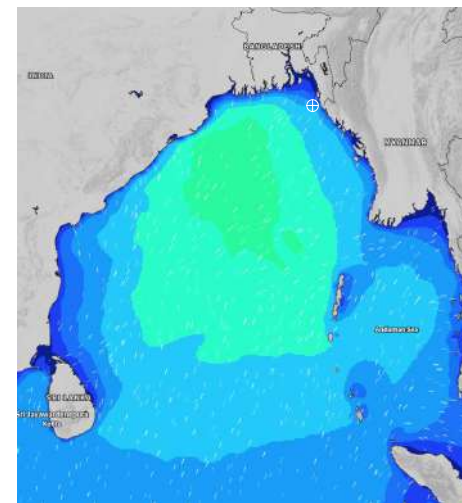
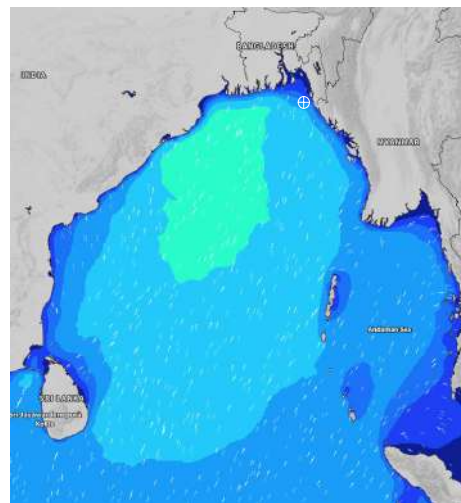
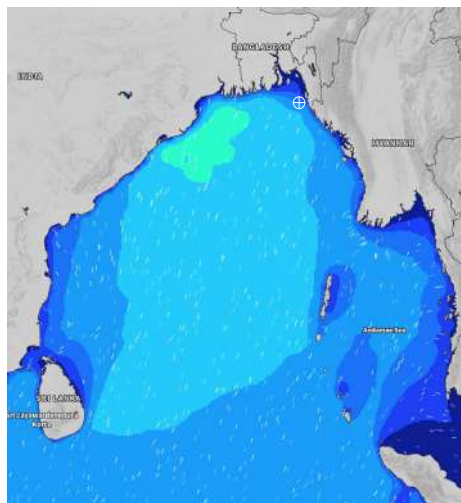
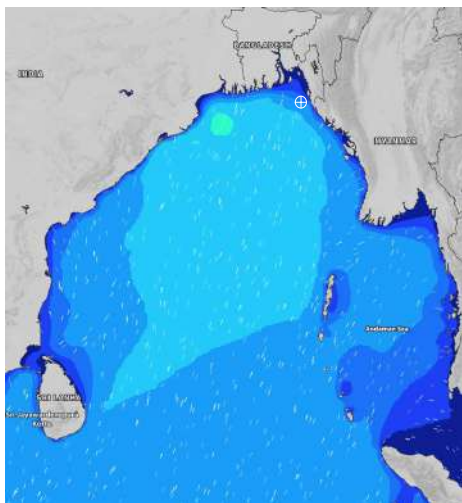
Date	Time	Max Wind Spd (kts)	Wind Direction	Wave Ht (m)	Sea State	Baro Pressure	Air Temp		Sea Surface Temp	Humidity (%)	Prob of Rain (%)	Sea State	Wave Ht (m)
							Max	Min					
07-06-24	0001	16	SSW	1.6	4	1006	34	28	29	88%	20% (0.0 mm)	0	0
	0600	11	SSW	1.7	4	1005			29	94%	18% (0.0 mm)	1	0 - 0.1
	1200	15	SSW	1.8	4	1006			30	76%	20% (0.0 mm)	2	0.1 - 0.5
	1800	20	SSW	1.9	4	1004			29	88%	19% (0.0 mm)	3	0.5 - 1.25
08-06-24	0001	19	S	2.0	4	1005	34	28	29	90%	21% (0.0 mm)	4	1.25 - 2.5
	0600	15	SSW	1.9	4	1004			29	94%	17% (0.0 mm)	5	2.5 - 4.0
	1200	17	S	1.9	4	1005			29	79%	16% (0.0 mm)	6	4.0 - 6.0
	1800	16	S	1.8	4	1002			29	83%	18% (0.0 mm)	7	6.0 - 9.0
09-06-24	0001	19	S	1.9	4	1003	34	28	29	90%	23% (0.0 mm)	8	9.0 - 14.0
	0600	13	S	1.9	4	1003			29	95%	19% (0.0 mm)	9	Over 14.0
	1200	19	S	1.9	4	1004			30	79%	18% (0.0 mm)		
	1800	19	SE	1.9	4	1002			29	83%	17% (0.0 mm)		
10-06-24	0001	21	S	1.9	4	1003	34	28	29	89%	20% (0.0 mm)		
	0600	19	S	2.0	4	1002			29	94%	15% (0.0 mm)		
	1200	20	SW	2.0	4	1003			30	76%	18% (0.0 mm)		
	1800	18	SE	2.0	4	1001			29	87%	17% (0.0 mm)		

07 June 24 Fri (Probability 70%)

08 June 24 Sat (Probability 60%)

09 June 24 Sun (Probability 50%)

10 June 24 Mon (Probability 50%)



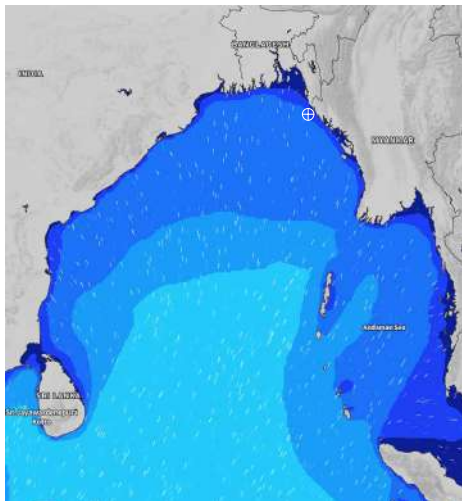
Significant wave height (m)

MARINE WEATHER FORECAST- 15 NM WEST OF ST. MARTIN'S LIGHT HOUSE (Lat 20° 37'N, Long 092° 03' E)

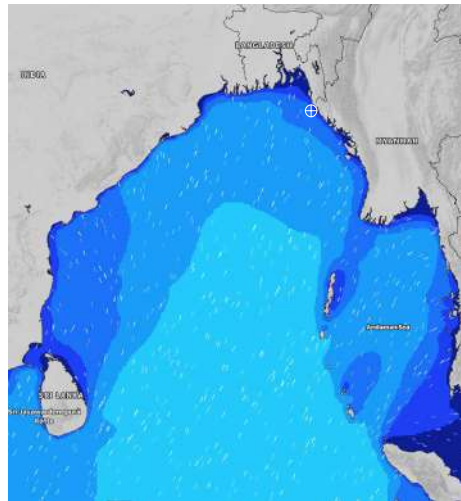
DATE : 03 to 10 June 2024

Date	Time	Max Wind Spd (kts)	Wind Direction	Wave Ht (m)	Sea State	Baro Pressure	Air Temp		Sea Surface Temp	Humidity (%)	Prob of Rain(%)	Sea State	Wave Ht (m)
							Max	Min					
03-06-24	0001	11	SSW	1.2	3	1008	33	27	29	87%	20% (0.0 mm)	0	0
	0600	10	WSW	1.2	3	1006			29	91%	19% (0.0 mm)	1	0 - 0.1
	1200	6	SSW	1.3	4	1008			30	86%	16% (0.0 mm)	2	0.1 - 0.5
	1800	8	WSW	1.4	4	1005			29	89%	17% (0.0 mm)	3	0.5 - 1.25
04-06-24	0001	11	SSW	1.4	4	1008	33	27	29	88%	21% (0.0 mm)	4	1.25 - 2.5
	0600	8	SSW	1.5	4	1005			29	92%	18% (0.0 mm)	5	2.5 - 4.0
	1200	8	SSW	1.6	4	1008			30	81%	19% (0.0 mm)	6	4.0 - 6.0
	1800	10	SSW	1.7	4	1005			29	89%	15% (0.0 mm)	7	6.0 - 9.0
05-06-24	0001	10	S	1.8	4	1007	33	27	29	89%	20% (0.0 mm)	8	9.0 - 14.0
	0600	6	S	1.9	4	1006			29	92%	19% (0.0 mm)	9	Over 14.0
	1200	5	S	1.9	4	1007			30	85%	18% (0.0 mm)		
	1800	10	SW	1.9	4	1005			30	89%	15% (0.0 mm)		
06-06-24	0001	11	S	1.9	4	1006	33	27	29	89%	21% (0.0 mm)		
	0600	10	WSW	1.9	4	1006			29	92%	19% (0.0 mm)		
	1200	12	WSW	1.9	4	1007			30	86%	18% (0.0 mm)		
	1800	14	SW	1.9	4	1005			30	88%	16% (0.0 mm)		

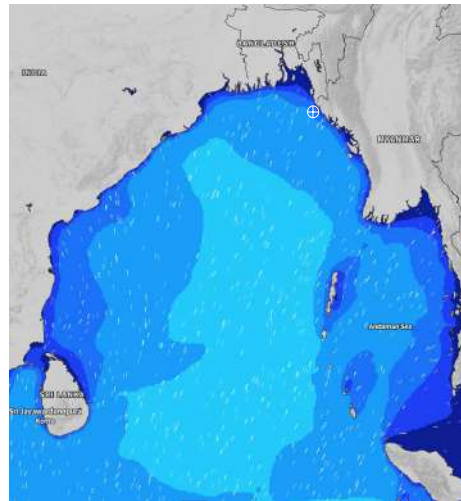
03 June 24 Mon (Probability 98%)



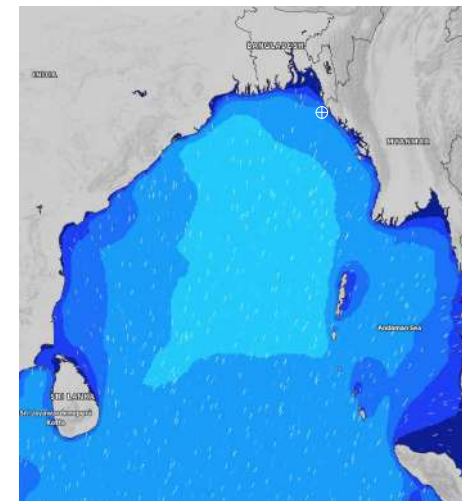
04 June 24 Tue (Probability 95%)



05 June 24 Wed (Probability 90%)



06 June 24 Thu (Probability 80%)



Significant wave height (m)

MARINE WEATHER FORECAST- 15 NM WEST OF ST. MARTIN'S LIGHT HOUSE (Lat 20° 37'N, Long 092° 03' E)

DATE : 03 to 10 June 2024

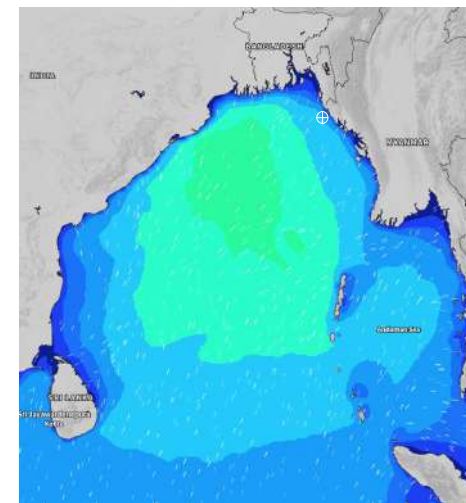
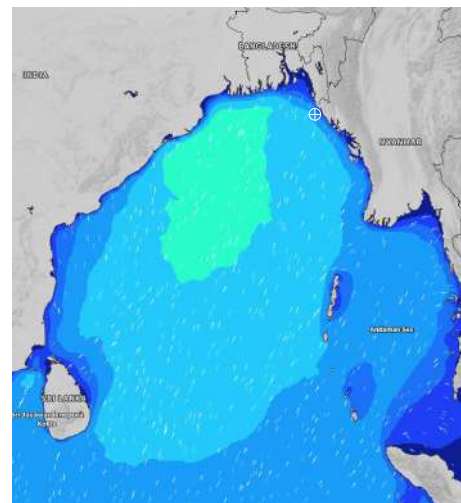
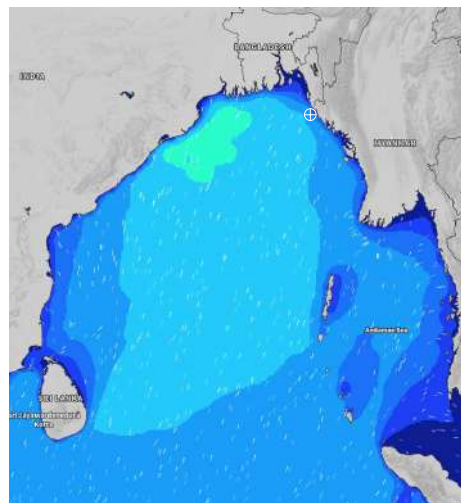
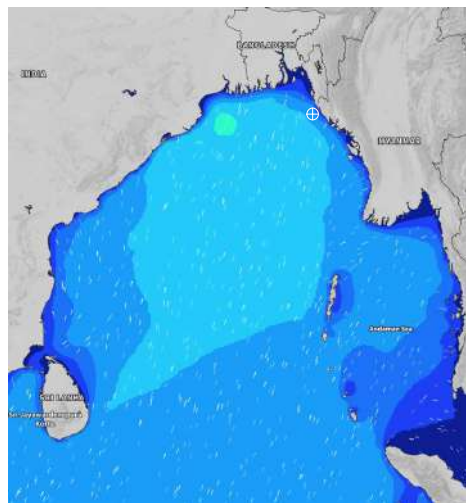
Date	Time	Max Wind Spd (kts)	Wind Direction	Wave Ht (m)	Sea State	Baro Pressure	Air Temp		Sea Surface Temp	Humidity (%)	Prob of Rain (%)	Sea State	Wave Ht (m)
							Max	Min					
07-06-24	0001	15	SW	2.0	4	1007	34	28	29	88%	20% (0.0 mm)	0	0
	0600	13	WSW	2.1	4	1005			29	91%	21% (0.0 mm)	1	0 - 0.1
	1200	17	SW	2.2	4	1007			29	83%	19% (0.0 mm)	2	0.1 - 0.5
	1800	19	SW	2.4	4	1004			29	87%	17% (0.0 mm)	3	0.5 - 1.25
08-06-24	0001	21	SW	2.5	4	1006	34	28	29	92%	21% (0.0 mm)	4	1.25 - 2.5
	0600	14	SW	2.5	4	1004			29	96%	23% (0.0 mm)	5	2.5 - 4.0
	1200	16	SSW	2.4	4	1006			29	82%	18% (0.0 mm)	6	4.0 - 6.0
	1800	13	SW	2.3	4	1004			29	88%	19% (0.0 mm)	7	6.0 - 9.0
09-06-24	0001	16	SSW	2.3	4	1004	34	28	29	93%	20% (0.0 mm)	8	9.0 - 14.0
	0600	16	SSW	2.4	4	1003			29	94%	18% (0.0 mm)	9	Over 14.0
	1200	13	SWW	2.4	4	1005			29	86%	17% (0.0 mm)		
	1800	17	SSW	2.4	4	1002			29	88%	19% (0.0 mm)		
10-06-24	0001	19	S	2.6	5	1004	34	28	29	93%	22% (0.0 mm)		
	0600	17	SSW	2.6	5	1002			29	95%	16% (0.0 mm)		
	1200	15	SSW	2.6	5	1003			29	86%	18% (0.0 mm)		
	1800	16	SW	2.6	5	1002			29	87%	19% (0.0 mm)		

07 June 24 Fri (Probability 70%)

08 June 24 Sat (Probability 60%)

09 June 24 Sun (Probability 50%)

10 June 24 Mon (Probability 50%)



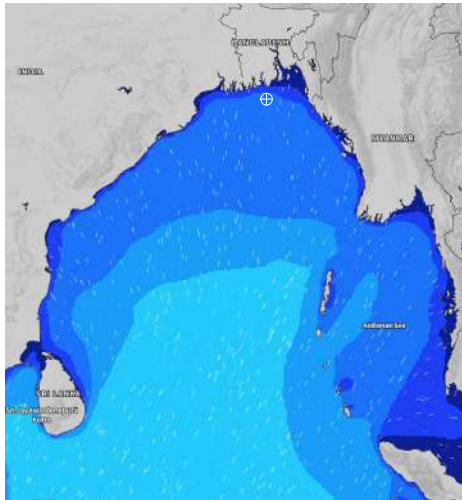
Significant wave height (m)

MARINE WEATHER FORECAST- 40 NM ESE OF PAYRA FAIRWAY (Lat 21° 07' N, Long 090° 45' E)

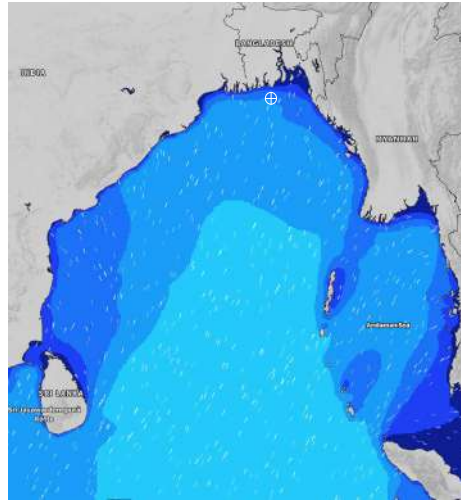
DATE : 03 to 10 June 2024

Date	Time	Max Wind Spd (kts)	Wind Direction	Wave Ht (m)	Sea State	Baro Pressure	Air Temp		Sea Surface Temp	Humidity (%)	Prob of Rain (%)	Sea State	Wave Ht (m)
							Max	Min					
03-06-24	0001	15	SW	1.2	3	1007	34	28	29	90%	20% (0.0 mm)	0	0
	0600	13	SSW	1.3	4	1006			29	93%	22% (0.0 mm)	1	0 - 0.1
	1200	14	SW	1.4	4	1007			30	85%	19% (0.0 mm)	2	0.1 - 0.5
	1800	15	SSW	1.5	4	1004			30	89%	18% (0.0 mm)	3	0.5 - 1.25
04-06-24	0001	16	SSW	1.6	4	1006	34	28	29	90%	21% (0.0 mm)	4	1.25 - 2.5
	0600	15	SSW	1.7	4	1005			29	94%	23% (0.0 mm)	5	2.5 - 4.0
	1200	14	SSW	1.8	4	1006			30	82%	18% (0.0 mm)	6	4.0 - 6.0
	1800	16	SSW	1.9	4	1004			30	87%	19% (0.0 mm)	7	6.0 - 9.0
05-06-24	0001	15	SW	2.0	4	1006	34	28	29	91%	20% (0.0 mm)	8	9.0 - 14.0
	0600	13	SSW	2.1	4	1006			29	95%	19% (0.0 mm)	9	Over 14.0
	1200	13	S	2.0	4	1007			30	81%	15% (0.0 mm)		
	1800	12	SSW	2.0	4	1005			30	88%	14% (0.0 mm)		
06-06-24	0001	19	SSW	2.0	4	1005	34	28	29	89%	23% (0.0 mm)		
	0600	17	SW	2.1	4	1006			29	91%	20% (0.0 mm)		
	1200	13	SW	2.0	4	1005			30	83%	18% (0.0 mm)		
	1800	15	SSW	2.1	4	1004			30	88%	19% (0.0 mm)		

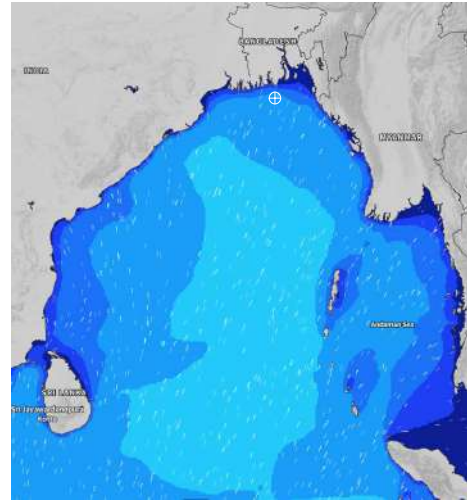
03 June 24 Mon (Probability 98%)



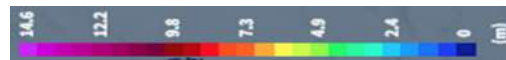
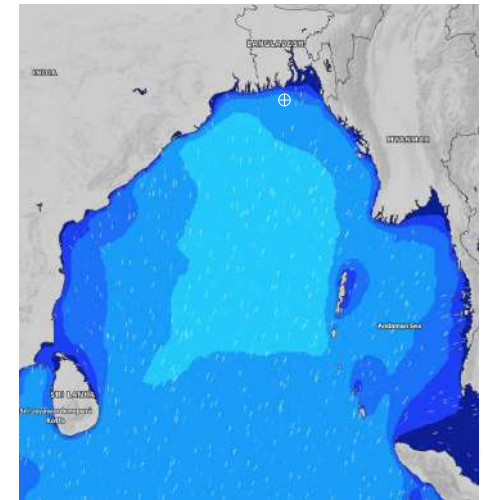
04 June 24 Tue (Probability 95%)



05 June 24 Wed (Probability 90%)



06 June 24 Thu (Probability 80%)



Significant wave height (m)

MARINE WEATHER FORECAST- 40 NM ESE OF PAYRA FAIRWAY (Lat 21° 07' N, Long 090° 45' E)

DATE : 03 to 10 June 2024

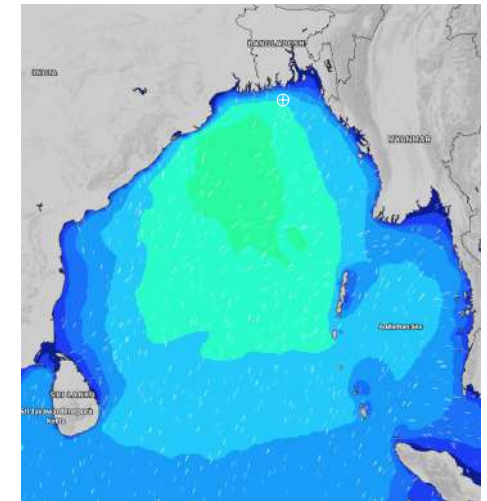
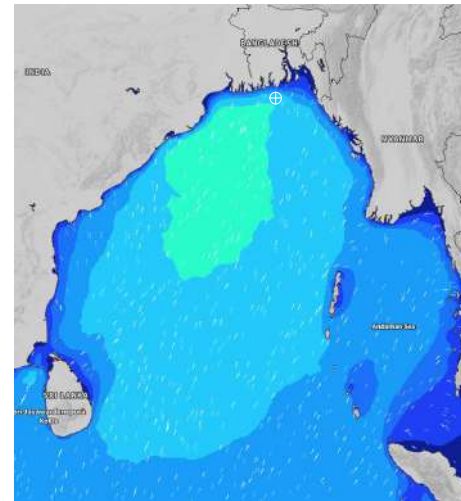
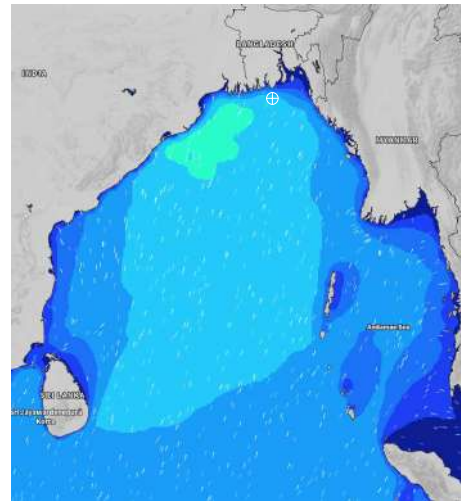
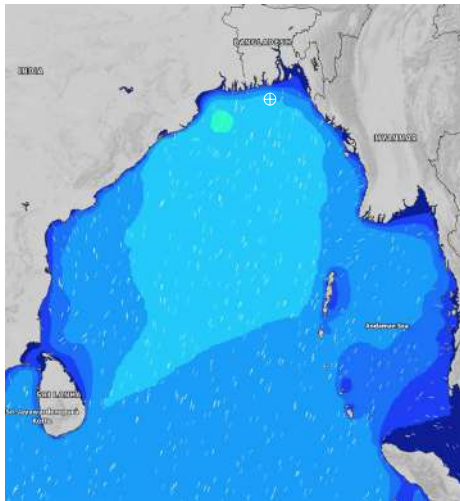
Date	Time	Max Wind Spd (kts)	Wind Direction	Wave Ht (m)	Sea Stae	Baro Pressure	Air Temp		Sea Surface Temp	Humidity (%)	Prob of Rain (%)	Sea State	Wave Ht (m)
							Max	Min					
07-06-24	0001	20	SW	2.3	4	1005	34	28	30	88%	20% (0.0 mm)	0	0
	0600	18	SW	2.5	5	1005			29	92%	23% (0.0 mm)	1	0 - 0.1
	1200	23	SW	2.6	5	1004			30	83%	19% (0.0 mm)	2	0.1 - 0.5
	1800	24	SSW	2.6	5	1003			30	87%	18% (0.0 mm)	3	0.5 - 1.25
08-06-24	0001	25	SSW	2.8	5	1004	34	28	29	91%	21% (0.0 mm)	4	1.25 - 2.5
	0600	22	SSW	2.8	5	1003			29	93%	19% (0.0 mm)	5	2.5 - 4.0
	1200	24	SSW	2.7	5	1004			30	83%	18% (0.0 mm)	6	4.0 - 6.0
	1800	21	SSW	2.7	5	1002			30	88%	17% (0.0 mm)	7	6.0 - 9.0
09-06-24	0001	22	S	2.7	5	1002	34	28	29	88%	22% (0.0 mm)	8	9.0 - 14.0
	0600	16	SSW	2.8	5	1003			29	92%	18% (0.0 mm)	9	Over 14.0
	1200	23	S	2.8	5	1002			30	82%	16% (0.0 mm)		
	1800	22	S	2.7	5	1002			30	88%	18% (0.0 mm)		
10-06-24	0001	22	SSW	2.9	5	1002	34	28	29	89%	23% (0.0 mm)		
	0600	20	SSW	2.9	5	1001			29	93%	19% (0.0 mm)		
	1200	25	SW	2.9	5	1002			30	83%	18% (0.0 mm)		
	1800	23	SSW	2.8	5	1001			30	87%	20% (0.0 mm)		

07 June 24 Fri (Probability 70%)

08 June 24 Sat (Probability 60%)

09 June 24 Sun (Probability 50%)

10 June 24 Mon (Probability 50%)



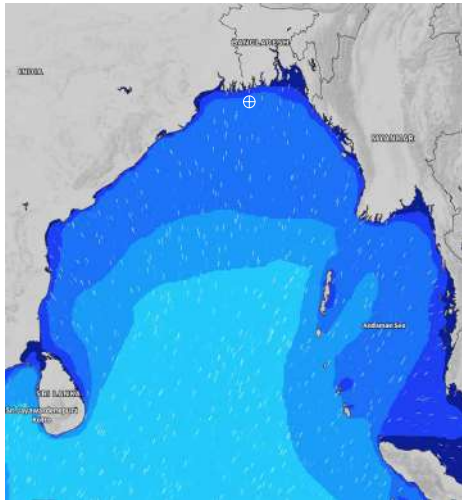
Significant wave height (m)

MARINE WEATHER FORECAST- 10 NM SOUTH OF MONGLA FAIRWAY (Lat 21° 16'N, Long 089° 34'E)

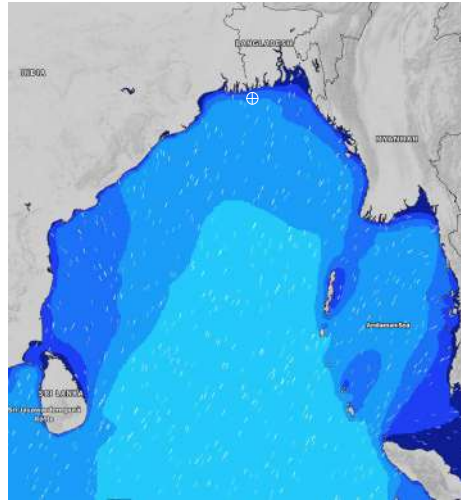
DATE : 03 to 10 June 2024

Date	Time	Max Wind Spd (kts)	Wind Direction	Wave Ht (m)	Sea State	Baro Pressure	Air Temp		Sea Surface Temp	Humidity (%)	Prob of Rain (%)	Sea State	Wave Ht (m)
							Max	Min					
03-06-24	0001	18	SSW	1.3	4	1007	34	28	29	89%	23% (0.0 mm)	0	0
	0600	16	SSW	1.4	4	1005			29	92%	20% (0.0 mm)	1	0 - 0.1
	1200	15	SW	1.4	4	1007			30	78%	16% (0.0 mm)	2	0.1 - 0.5
	1800	20	SSW	1.6	4	1004			29	86%	17% (0.0 mm)	3	0.5 - 1.25
04-06-24	0001	20	SW	1.8	4	1006	34	28	29	90%	20% (0.0 mm)	4	1.25 - 2.5
	0600	17	SSW	1.8	4	1005			29	94%	18% (0.0 mm)	5	2.5 - 4.0
	1200	17	SSW	1.9	4	1006			30	78%	15% (0.0 mm)	6	4.0 - 6.0
	1800	19	SSW	2.0	4	1003			29	88%	16% (0.0 mm)	7	6.0 - 9.0
05-06-24	0001	19	SSW	2.0	4	1004	34	28	29	89%	22% (0.0 mm)	8	9.0 - 14.0
	0600	19	SSW	2.0	4	1005			29	93%	17% (0.0 mm)	9	Over 14.0
	1200	17	SSW	2.0	4	1005			30	77%	15% (0.0 mm)		
	1800	12	SSW	1.9	4	1003			29	88%	18% (0.0 mm)		
06-06-24	0001	17	SSW	1.9	4	1005	34	28	29	91%	23% (0.0 mm)		
	0600	19	SW	2.0	4	1006			29	94%	19% (0.0 mm)		
	1200	18	SSW	2.0	4	1005			30	81%	16% (0.0 mm)		
	1800	15	SSW	2.0	4	1004			29	87%	19% (0.0 mm)		

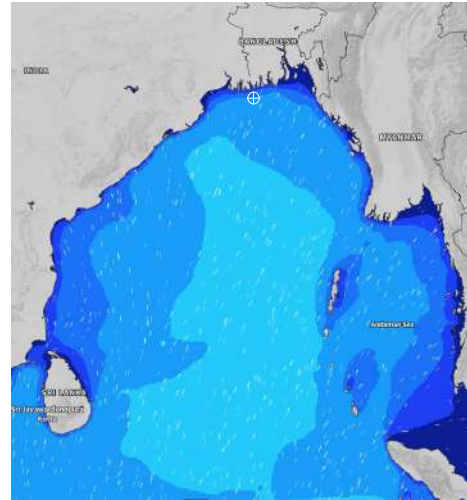
03 June 24 Mon (Probability 98%)



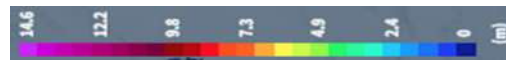
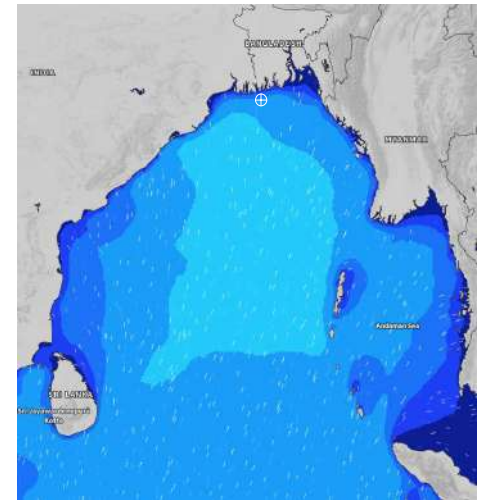
04 June 24 Tue (Probability 95%)



05 June 24 Wed (Probability 90%)



06 June 24 Thu (Probability 80%)



Significant wave height (m)

MARINE WEATHER FORECAST- 10 NM SOUTH OF MONGLA FAIRWAY (Lat 21° 16'N, Long 089° 34'E)

DATE : 03 to 10 June 2024

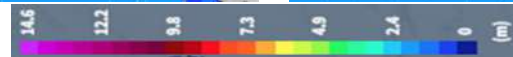
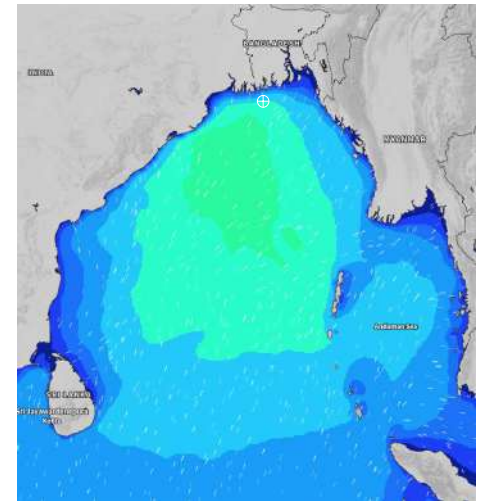
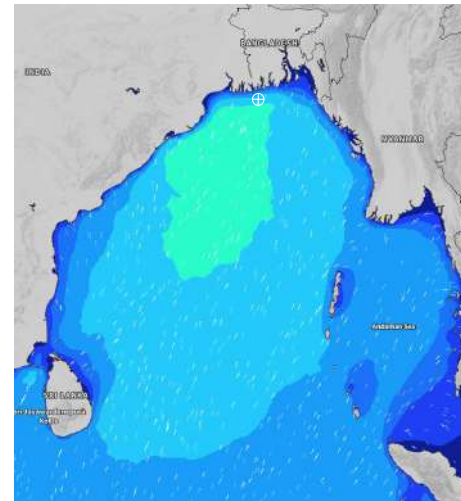
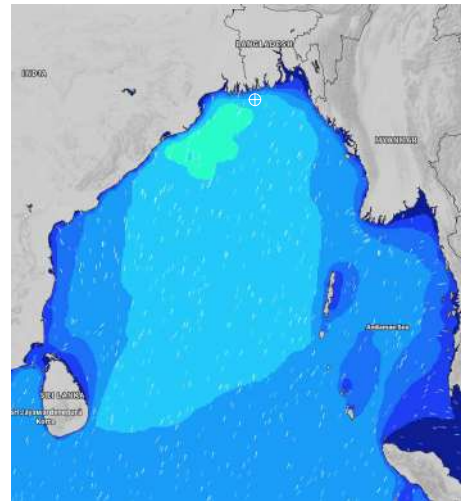
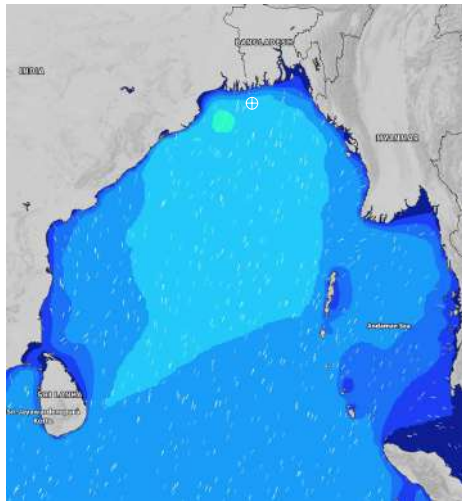
Date	Time	Max Wind Spd (kts)	Wind Direction	Wave Ht (m)	Sea State	Baro Pressure	Air Temp		Sea Surface Temp	Humidity (%)	Prob of Rain (%)	Sea State	Wave Ht (m)
							Max	Min					
07-06-24	0001	25	SW	2.6	5	1004	34	29	29	89%	21% (0.0 mm)	0	0
	0600	25	SSW	2.6	5	1003			29	95%	26% (0.0 mm)	1	0 - 0.1
	1200	22	SSW	2.6	5	1004			30	87%	20% (0.0 mm)	2	0.1 - 0.5
	1800	25	SSW	2.6	5	1002			29	89%	20% (0.0 mm)	3	0.5 - 1.25
08-06-24	0001	28	SSW	3.0	5	1003	34	29	29	91%	23% (0.0 mm)	4	1.25 - 2.5
	0600	27	SSW	2.9	5	1002			29	95%	19% (0.0 mm)	5	2.5 - 4.0
	1200	28	SSW	2.9	5	1003			30	88%	17% (0.0 mm)	6	4.0 - 6.0
	1800	30	SSW	2.8	5	1002			29	89%	16% (0.0 mm)	7	6.0 - 9.0
09-06-24	0001	27	SSW	3.0	5	1002	34	29	29	90%	22% (0.0 mm)	8	9.0 - 14.0
	0600	22	SSW	3.1	5	1001			29	96%	19% (0.0 mm)	9	Over 14.0
	1200	30	SSW	3.0	5	1002			30	89%	24% (0.0 mm)		
	1800	25	S	2.9	5	1000			29	88%	18% (0.0 mm)		
10-06-24	0001	23	SSW	2.8	5	1001	34	29	29	91%	23% (0.0 mm)		
	0600	26	SSW	3.0	5	1000			29	95%	18% (0.0 mm)		
	1200	25	SSW	3.0	5	1001			30	85%	22% (0.0 mm)		
	1800	27	SSW	3.0	5	100			29	88%	19% (0.0 mm)		

07 June 24 Fri (Probability 70%)

08 June 24 Sat (Probability 60%)

09 June 24 Sun (Probability 50%)

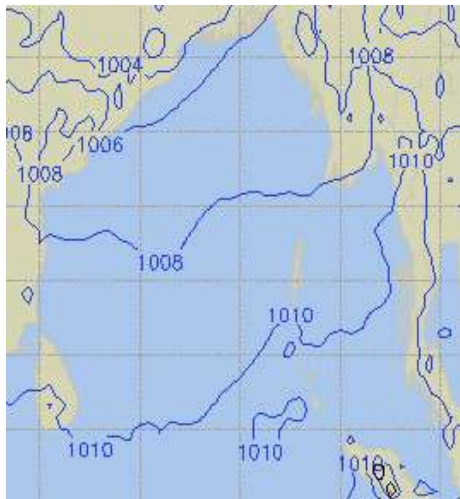
10 June 24 Mon (Probability 50%)



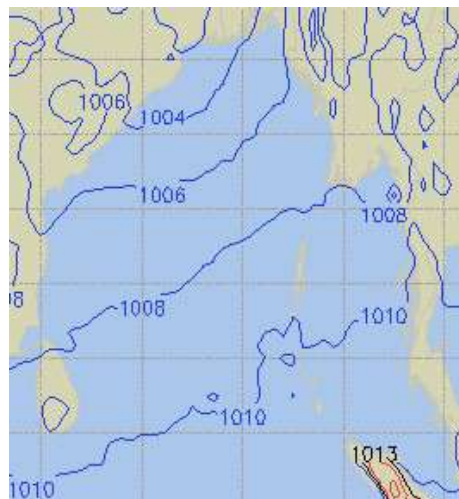
Significant wave height (m)

PREDICTED SURFACE PRESSURE FORECAST (03 to 09 June 2024)

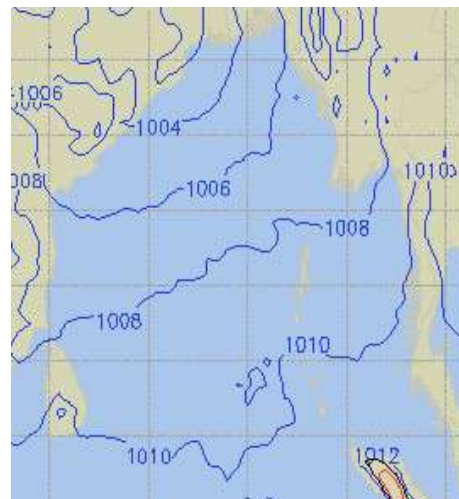
03 June 24 Mon (Probability 98%)



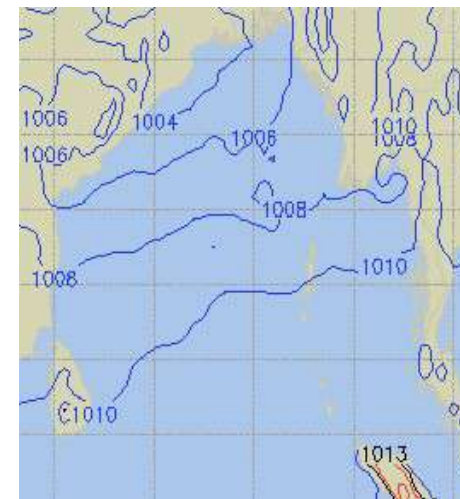
04 June 24 Tue (Probability 95%)



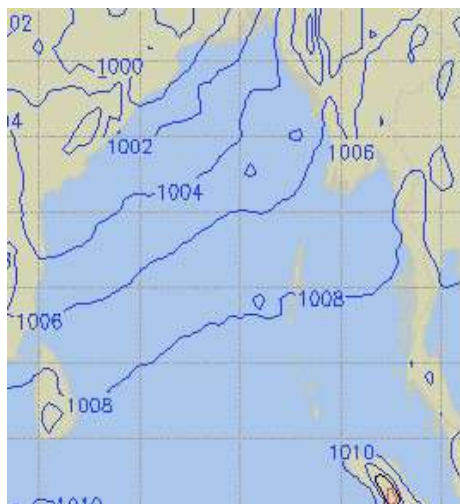
05 June 24 Wed (Probability 90%)



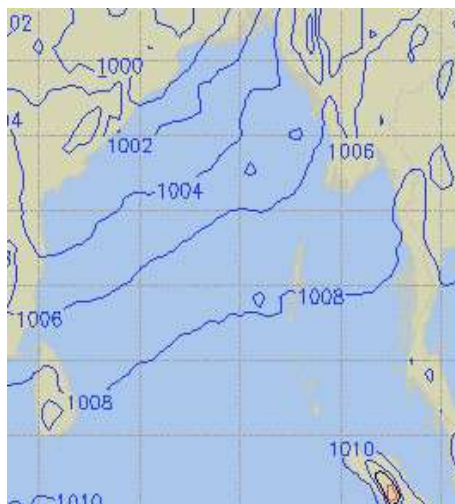
06 June 24 Thu (Probability 80%)



07 June 24 Fri (Probability 70%)



08 June 24 Sat (Probability 60%)



09 June 24 Sun (Probability 50%)

