



SUMMARY OF MARINE WEATHER FORECAST
COASTAL AREA OF BANGLADESH
DATE: 02 to 09 Oct 2024



Fleet forecast	Trough of low lies over North Bay. Monsoon is fairly active over Bangladesh and moderate over North Bay.
Wind direction, speed	South/south-westerly 10 kts, (Temporary gusting up to 26 kts).
Wave height & sea state	Wave height: 0.1 to 1.6 m (Sea state:1 to 4).
Sea surface temperature	26°C - 30°C (May remain nearly unchanged).
Baro pressure	1003- 1012 mb
Rainfall	Light to moderate rain/thunder showers over Bay of Bengal & adjoining area with moderately heavy to very heavy falls at places over Chattogram, Barishal & Sylhet division

Outlook for 02 to 09 Oct 2024: Rainfall activity may continue

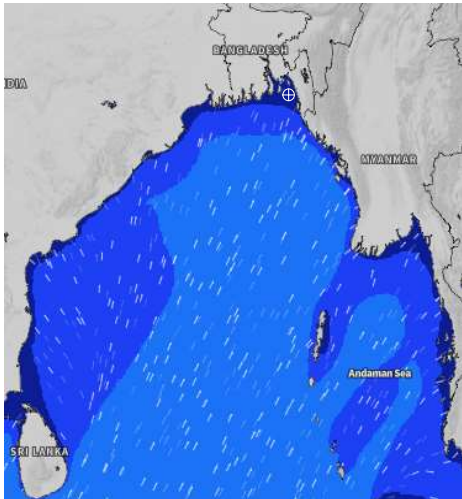


MARINE WEATHER FORECAST (02 to 09 Oct 2024) NEAR AUTHORITY BUOY (22° 12' N, 091° 38' E)

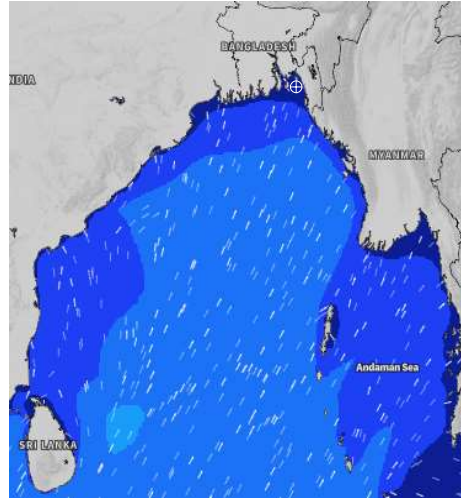


Date	Time	Air Temp (°C)		Sea Surface Temp (°C)	Baro Pressure (mbar)	Wind Direction	Wind Spd (kts)		Wave Ht (m)	Sea State	Humidity (%)	Prob of Rain
		Max	Min				Max	Avg				
02-10-24 (Wednesday)	0001	28	25	29	1005	SE	4	3	0.1	1	92	32% (0.2 mm)
	0600			28	1004	E	6	5	0.1	1	94	45% (0.4 mm)
	1200			27	1005	SE	11	10	0.1	1	90	64% (3.3 mm)
	1800			27	1004	SE	10	9	0.2	2	90	51% (0.6 mm)
03-10-24 (Thursday)	0001	29	25	27	1005	SE	8	7	0.2	2	93	60% (1.0 mm)
	0600			26	1005	E	9	7	0.2	2	93	63% (1.2 mm)
	1200			28	1005	SSW	8	7	0.2	2	86	67% (1.3 mm)
	1800			29	1004	SSW	10	9	0.2	2	90	98% (1.6 mm)
04-10-24 (Friday)	0001	29	25	27	1005	NE	7	6	0.1	1	92	78% (0.7 mm)
	0600			26	1003	E	13	19	0.4	2	94	72% (0.6 mm)
	1200			26	1006	SSE	26	24	0.7	3	84	80% (1.0 mm)
	1800			28	1007	S	19	16	0.4	2	87	60% (0.6 mm)
05-10-24 (Saturday)	0001	30	25	27	1008	SSE	18	14	0.3	2	94	71% (0.7 mm)
	0600			27	1008	SSE	20	15	0.4	2	95	77% (0.6 mm)
	1200			28	1008	S	14	13	0.3	2	84	80% (1.0 mm)
	1800			29	1007	S	17	14	0.4	2	87	66% (0.6 mm)

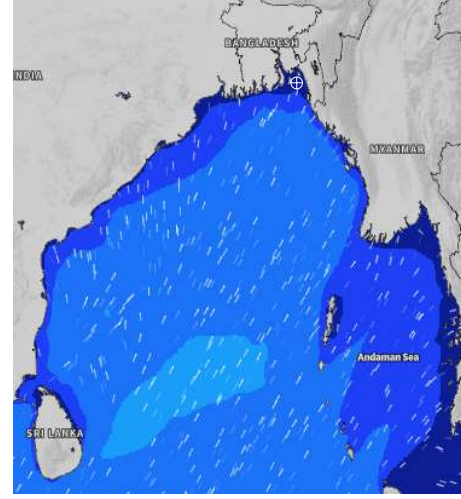
02 Oct 2024



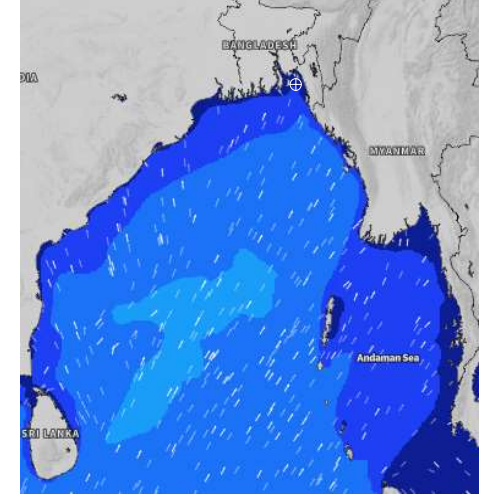
03 Oct 2024



04 Oct 2024



05 Oct 2024



Significant wave height (m)

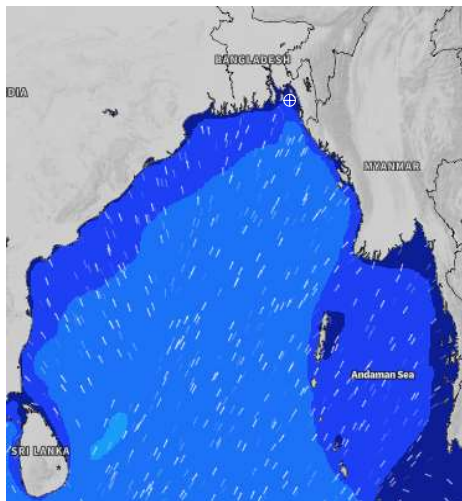


MARINE WEATHER FORECAST (02 to 09 Oct 2024) NEAR AUTHORITY BUOY (22° 12' N, 091° 38' E)

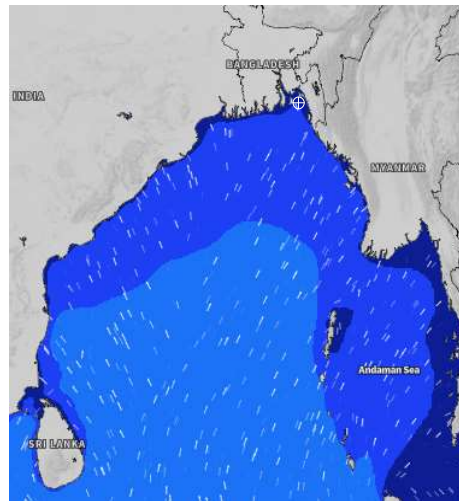


Date	Time	Air Temp (°C)		Sea Surface Temp (°C)	Baro Pressure (mbar)	Wind Direction	Wind Spd (kts)		Wave Ht (m)	Sea State	Humidity (%)	Prob of Rain
		Max	Min				Max	Avg				
06-10-24 (Sunday)	0001	30	26	27	1008	SE	13	11	0.3	2	93	71% (0.7 mm)
	0600			26	1008	SE	15	11	0.3	2	95	70% (0.9 mm)
	1200			28	1008	S	14	12	0.3	2	83	58% (0.6 mm)
	1800			28	1007	SSE	16	15	0.4	2	85	45% (0.4 mm)
07-10-24 (Monday)	0001	31	26	27	1009	SE	16	13	0.3	2	92	40% (0.3 mm)
	0600			27	1009	SE	13	10	0.2	2	94	53% (0.5 mm)
	1200			28	1009	SSW	13	11	0.3	2	84	56% (0.5 mm)
	1800			28	1008	S	12	10	0.3	2	86	74% (0.8 mm)
08-10-24 (Tuesday)	0001	31	26	27	1010	SE	14	11	0.3	2	93	68% (0.7 mm)
	0600			27	1011	SE	10	8	0.2	2	92	40% (0.2 mm)
	1200			28	1012	SSW	10	7	0.2	2	85	66% (0.5 mm)
	1800			27	1011	SSE	15	12	0.3	2	88	45% (0.4 mm)
09-10-24 (Wednesday)	0001	30	25	27	1011	SE	14	11	0.3	2	92	68% (0.7 mm)
	0600			26	1011	SE	10	8	0.2	2	92	68% (0.6 mm)
	1200			26	1011	SSW	14	11	0.3	2	82	71% (0.9 mm)
	1800			27	1009	SE	16	15	0.4	2	87	50% (0.5 mm)

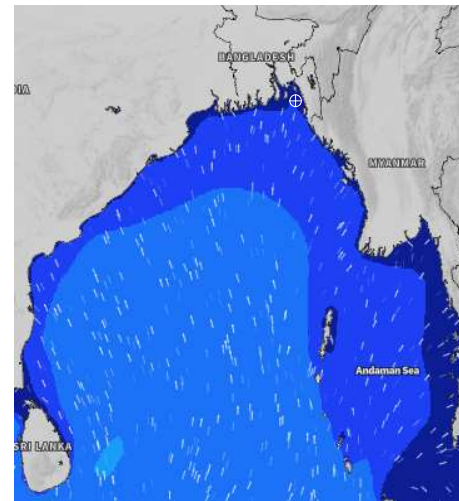
06 Oct 2024



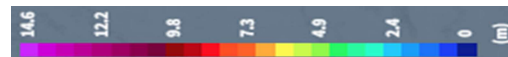
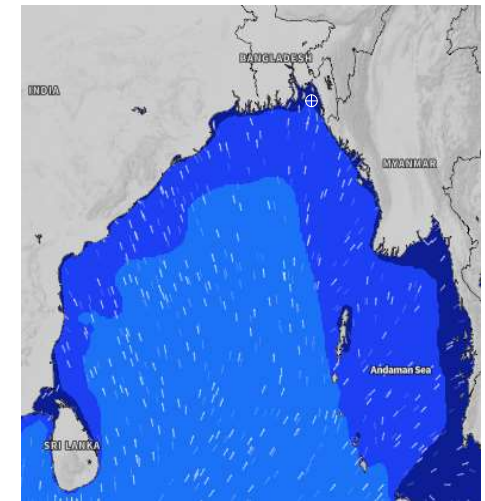
07 Oct 2024



08 Oct 2024



09 Oct 2024



Significant wave height (m)



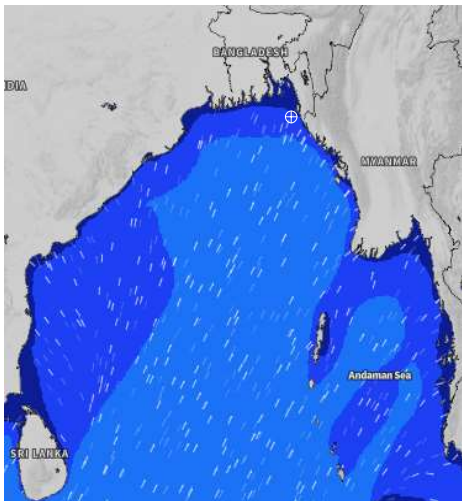
MARINE WEATHER FORECAST (02 to 09 Oct 2024)

20 NM WEST OF ELEPHANT POINT (21° 10' N, 091° 42' E)

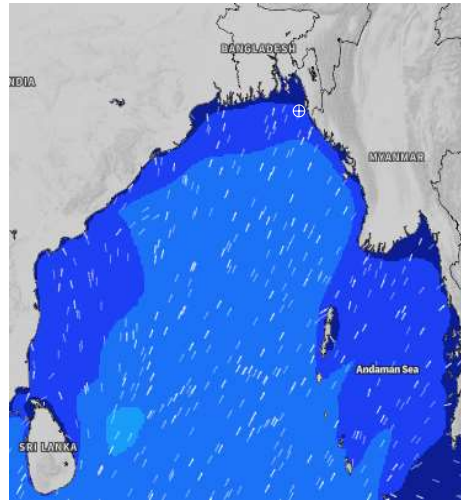


Date	Time	Air Temp (°C)		Sea Surface Temp (°C)	Baro Pressure (mbar)	Wind Direction	Wind Spd (kts)		Wave Ht (m)	Sea State	Humidity (%)	Prob of Rain
		Max	Min				Max	Avg				
02-10-24 (Wednesday)	0001	28	26	30	1005	WSW	7	6	0.9	3	93	17% (0.0 mm)
	0600			29	1004	WNW	7	6	0.9	3	94	15% (0.0 mm)
	1200			27	1005	SE	12	11	0.8	3	90	98% (8.0 mm)
	1800			27	1004	S	10	9	0.8	3	90	59% (0.6 mm)
03-10-24 (Thursday)	0001	28	26	28	1005	S	8	7	0.8	3	92	65% (1.5 mm)
	0600			28	1004	ESE	9	8	0.8	3	93	69% (1.7 mm)
	1200			28	1005	S	15	14	1.0	3	88	96% (1.6 mm)
	1800			28	1004	SSE	8	7	1.1	3	91	63% (1.3 mm)
04-10-24 (Friday)	0001	28	25	27	1004	ESE	11	10	1.1	3	91	60% (0.5 mm)
	0600			26	1005	S	24	22	1.6	4	94	76% (1.7 mm)
	1200			28	1008	S	18	16	1.4	4	89	66% (1.7 mm)
	1800			28	1007	SSE	13	12	1.2	3	90	45% (0.4 mm)
05-10-24 (Saturday)	0001	29	26	28	1008	SSE	16	15	1.2	3	92	54% (0.5 mm)
	0600			28	1008	SE	18	17	1.2	3	93	76% (0.7 mm)
	1200			29	1008	SSE	17	16	1.3	4	85	86% (1.1 mm)
	1800			29	1007	SSE	14	13	1.1	3	90	45% (0.4 mm)

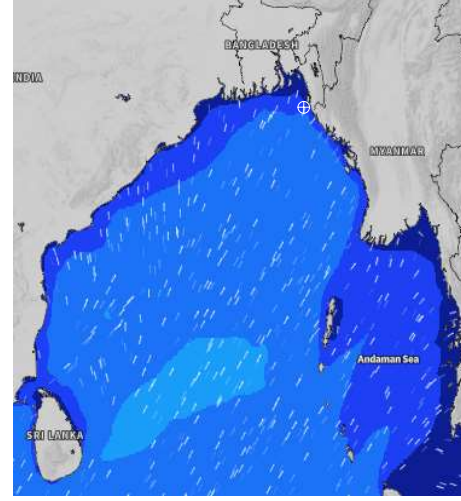
02 Oct 2024



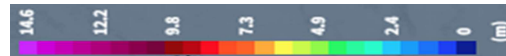
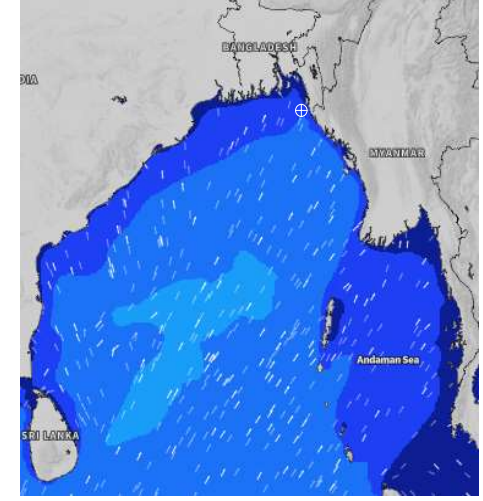
03 Oct 2024



04 Oct 2024



05 Oct 2024



Significant wave height (m)

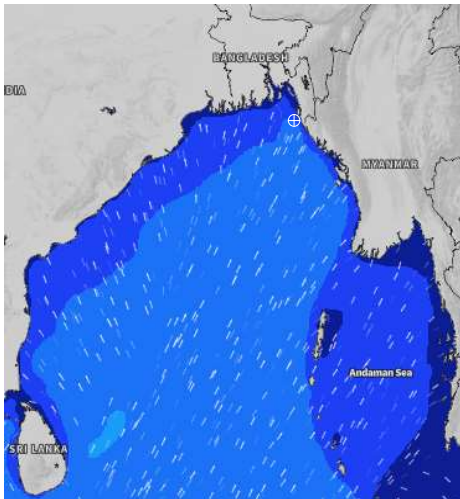


MARINE WEATHER FORECAST (02 to 09 Oct 2024) 20 NM WEST OF ELEPHANT POINT (21° 10' N, 091° 42' E)

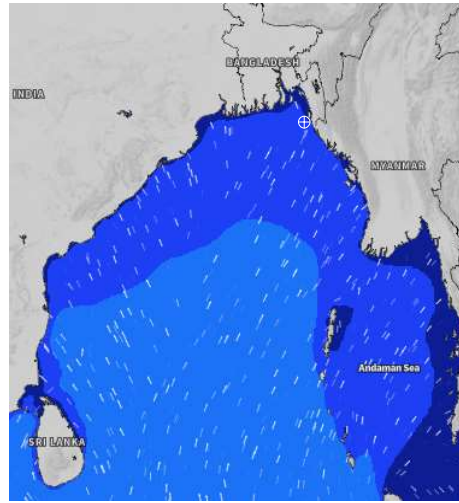


Date	Time	Air Temp (°C)		Sea Surface Temp (°C)	Baro Pressure (mbar)	Wind Direction	Wind Spd (kts)		Wave Ht (m)	Sea State	Humidity (%)	Prob of Rain
		Max	Min				Max	Avg				
06-10-24 (Sunday)	0001	30	26	29	1008	SSE	13	12	0.9	3	92	71% (0.7 mm)
	0600			27	1008	SSE	13	12	1.0	3	94	73% (0.8 mm)
	1200			28	1008	SE	22	18	1.4	4	87	71% (0.5 mm)
	1800			28	1007	SSE	17	16	1.3	4	90	50% (0.5 mm)
07-10-24 (Monday)	0001	31	26	27	1009	SSE	16	15	1.1	3	92	68% (0.7 mm)
	0600			27	1009	SE	16	15	1.1	3	93	68% (0.7 mm)
	1200			28	1009	SSE	15	13	1.0	3	84	78% (0.5 mm)
	1800			29	1008	S	12	11	0.9	3	87	54% (0.4 mm)
08-10-24 (Tuesday)	0001	30	26	28	1010	SSE	11	10	0.8	3	91	68% (0.7 mm)
	0600			28	1010	SE	16	15	0.9	3	94	69% (0.2 mm)
	1200			28	1011	SSE	16	15	1.0	3	86	78% (0.5 mm)
	1800			29	1010	SSE	14	13	0.9	3	90	50% (0.4 mm)
09-10-24 (Wednesday)	0001	31	26	28	1010	SE	14	13	0.9	3	91	80% (1.7 mm)
	0600			27	1011	SE	15	14	0.9	3	94	68% (0.2 mm)
	1200			26	1011	SSW	14	13	1.0	3	86	71% (0.5 mm)
	1800			27	1010	SE	15	14	1.0	3	90	50% (0.4 mm)

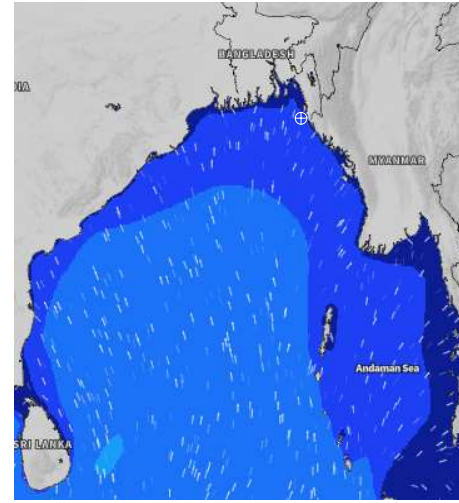
06 Oct 2024



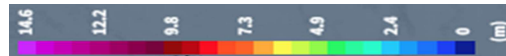
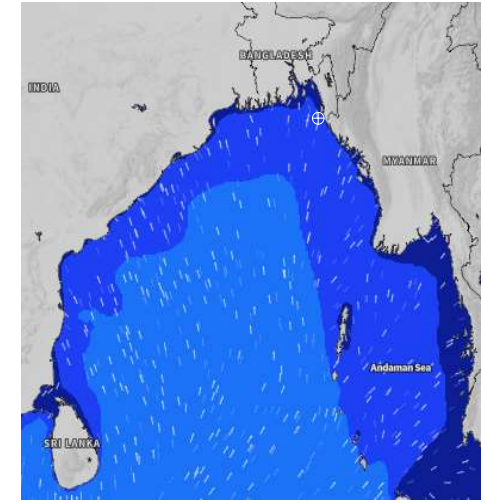
07 Oct 2024



08 Oct 2024



09 Oct 2024



Significant wave height (m)



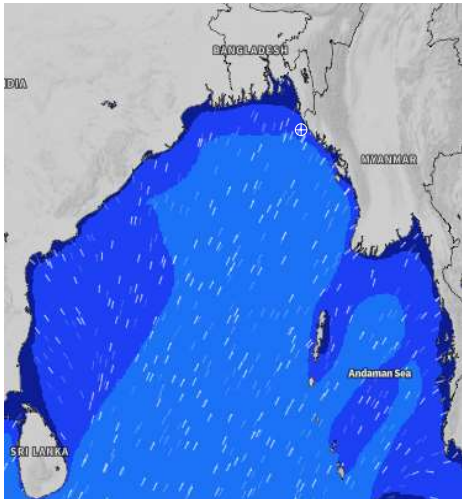
MARINE WEATHER FORECAST (02 to 09 Oct 2024)

15 NM WEST OF ST. MARTIN'S LIGHT HOUSE (20° 37' N, 092° 03' E)

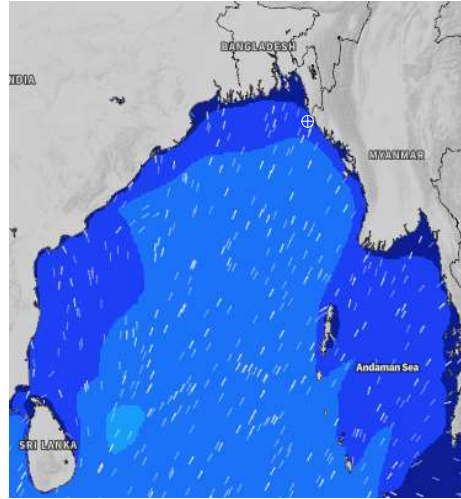


Date	Time	Air Temp (°C)		Sea Surface Temp (°C)	Baro Pressure (mbar)	Wind Direction	Wind Spd (kts)		Wave Ht (m)	Sea State	Humidity (%)	Prob of Rain
		Max	Min				Max	Avg				
02-10-24 (Wednesday)	0001	28	26	29	1006	W	7	6	1.2	3	92	60% (1.0 mm)
	0600			29	1004	W	8	7	1.2	3	94	57% (1.2 mm)
	1200			27	1006	NE	5	4	1.1	3	94	98% (2.2 mm)
	1800			27	1004	S	7	6	1.1	3	90	62% (0.8 mm)
03-10-24 (Thursday)	0001	28	26	27	1006	SW	4	3	1.1	3	91	67% (0.7 mm)
	0600			28	1004	ESE	8	7	1.1	3	92	71% (1.2 mm)
	1200			28	1006	SSE	12	10	1.2	3	90	71% (1.5 mm)
	1800			27	1003	ENE	13	12	1.5	4	91	50% (0.4 mm)
04-10-24 (Friday)	0001	28	26	27	1006	SSW	16	15	1.5	4	92	54% (0.5 mm)
	0600			27	1005	SSW	16	13	1.6	4	92	76% (0.7 mm)
	1200			29	1008	S	16	15	1.5	4	91	86% (1.1 mm)
	1800			29	1007	S	11	10	1.4	4	91	45% (0.3 mm)
05-10-24 (Saturday)	0001	29	26	29	1009	SSE	12	11	1.3	4	93	68% (0.7 mm)
	0600			28	1007	SE	13	12	1.4	4	93	68% (0.2 mm)
	1200			28	1010	SSE	13	11	1.3	4	85	71% (0.5 mm)
	1800			28	1007	SSE	10	9	1.2	3	87	50% (0.4 mm)

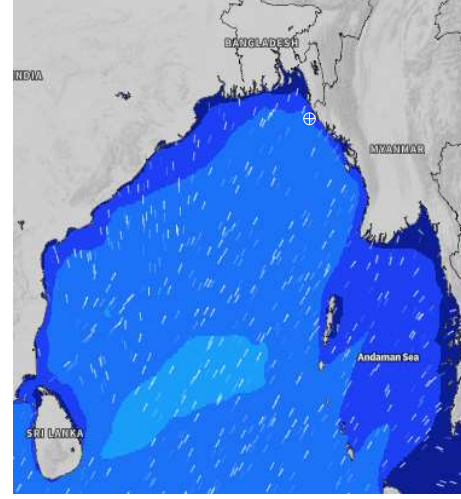
02 Oct 2024



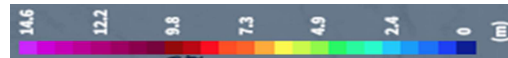
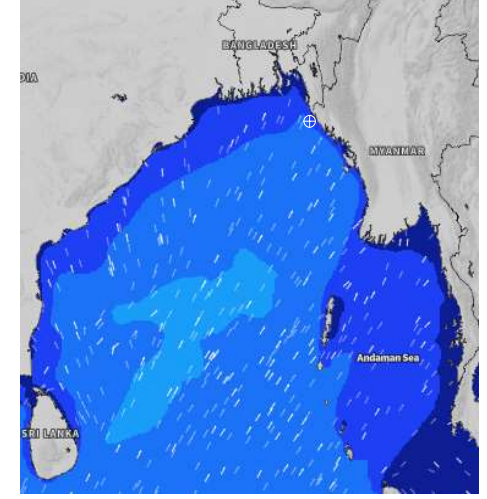
03 Oct 2024



04 Oct 2024



05 Oct 2024



Significant wave height (m)



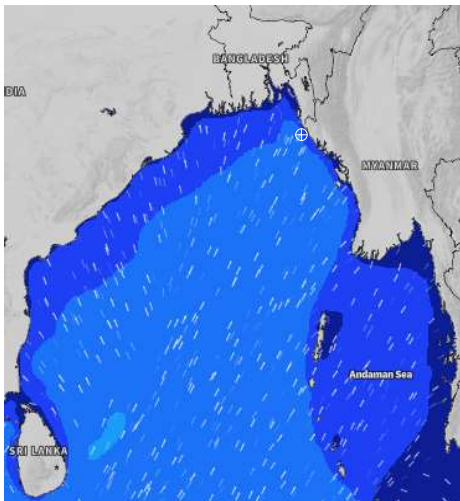
MARINE WEATHER FORECAST (02 to 09 Oct 2024)

15 NM WEST OF ST. MARTIN'S LIGHT HOUSE (20° 37' N, 092° 03' E)

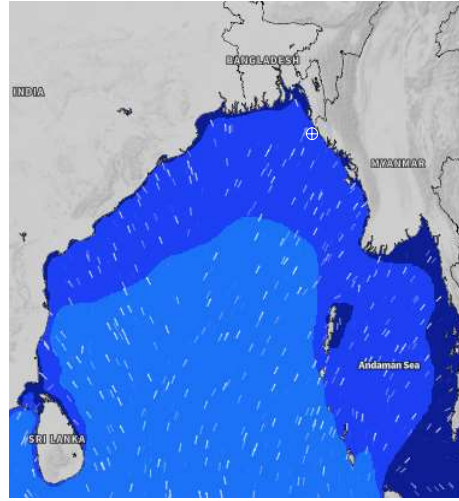


Date	Time	Air Temp (°C)		Sea Surface Temp (°C)	Baro Pressure (mbar)	Wind Direction	Wind Spd (kts)		Wave Ht (m)	Sea State	Humidity (%)	Prob of Rain
		Max	Min				Max	Avg				
06-10-24 (Sunday)	0001	30	26	28	1008	SSW	11	10	1.2	3	92	72% (0.7 mm)
	0600			28	1007	ESE	11	10	1.2	3	94	66% (0.6 mm)
	1200			27	1009	SE	14	14	1.3	4	90	58% (0.4 mm)
	1800			28	1007	SSE	11	11	1.3	4	92	45% (0.4 mm)
07-10-24 (Monday)	0001	30	26	28	1009	S	12	12	1.2	3	92	77% (0.9 mm)
	0600			27	1007	SE	13	12	1.2	3	94	69% (0.7 mm)
	1200			28	1011	SE	12	12	1.1	3	89	74% (0.6 mm)
	1800			29	1008	E	10	9	1.0	3	90	66% (0.6 mm)
08-10-24 (Tuesday)	0001	30	26	29	1011	S	10	9	0.9	3	92	73% (0.7 mm)
	0600			28	1009	SE	9	8	0.9	3	93	66% (0.6 mm)
	1200			29	1012	ESE	13	12	1.0	3	87	40% (0.4 mm)
	1800			28	1010	SE	10	9	0.9	3	89	36% (0.2 mm)
09-10-24 (Wednesday)	0001	30	26	29	1010	S	14	13	0.9	3	92	73% (1.2 mm)
	0600			28	1009	SE	12	11	1.0	3	93	74% (0.6 mm)
	1200			27	1012	ESE	16	15	1.1	3	86	66% (0.4 mm)
	1800			27	1009	SE	13	11	1.0	3	90	73% (1.0 mm)

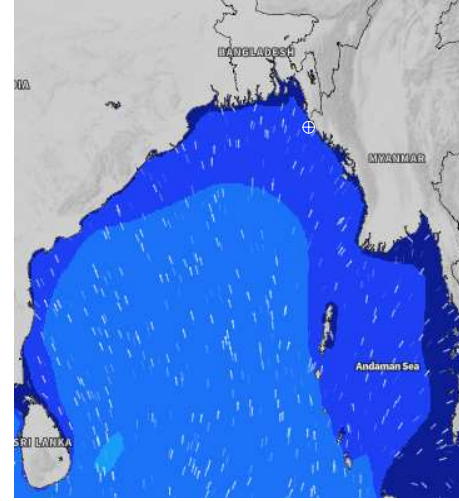
06 Oct 2024



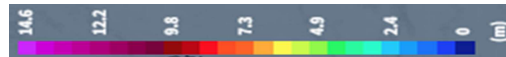
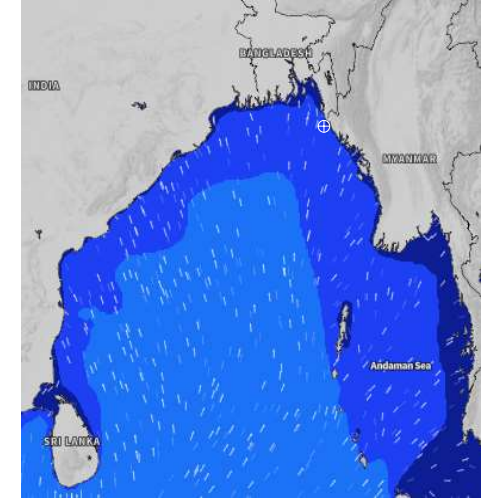
07 Oct 2024



08 Oct 2024



09 Oct 2024



Significant wave height (m)



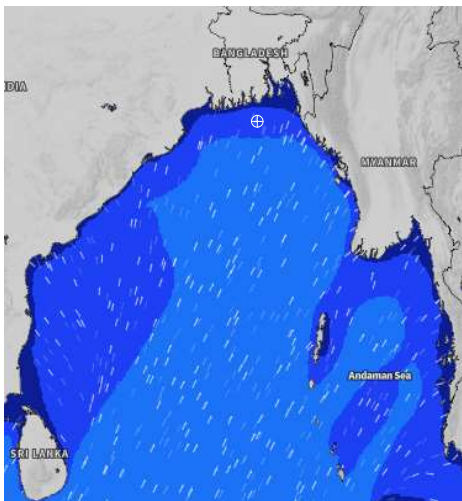
MARINE WEATHER FORECAST (02 to 09 Oct 2024)

40 NM ESE OF PAYRA FAIRWAY (21° 07' N, 090° 45' E)

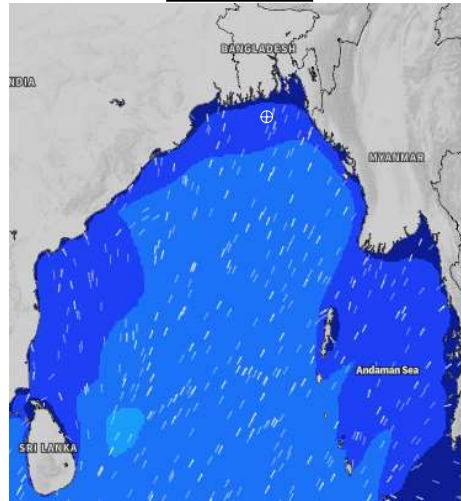


Date	Time	Air Temp (°C)		Sea Surface Temp (°C)	Baro Pressure (mbar)	Wind Direction	Wind Spd (kts)		Wave Ht (m)	Sea State	Humidity (%)	Prob of Rain
		Max	Min				Max	Avg				
02-10-24 (Wednesday)	0001	30	27	30	1005	WSW	9	8	1.1	3	90	24% (0.0 mm)
	0600			29	1004	W	12	11	1.1	3	91	23% (0.0 mm)
	1200			29	1005	WSW	5	4	1.1	3	84	40% (0.3 mm)
	1800			29	1004	S	10	9	1.0	3	88	34% (0.2 mm)
03-10-24 (Thursday)	0001	29	27	29	1005	SW	10	9	1.1	3	91	30% (0.2 mm)
	0600			29	1004	NNW	4	3	1.1	3	94	64% (0.6 mm)
	1200			28	1005	SSE	13	12	1.3	4	86	60% (0.6 mm)
	1800			28	1004	S	10	9	1.4	4	88	43% (0.4 mm)
04-10-24 (Friday)	0001	29	27	28	1005	W	11	10	1.4	4	91	56% (0.5 mm)
	0600			26	1005	WSW	17	15	1.5	4	91	75% (0.7 mm)
	1200			28	1007	SSW	14	19	1.4	4	84	86% (1.1 mm)
	1800			29	1006	SSW	11	9	1.4	4	87	45% (0.3 mm)
05-10-24 (Saturday)	0001	30	27	29	1007	SSE	11	10	1.3	4	90	60% (0.5 mm)
	0600			29	1007	S	11	10	1.3	4	91	74% (0.7 mm)
	1200			29	1008	S	9	8	1.2	3	87	86% (1.1 mm)
	1800			29	1007	SSW	10	9	1.2	3	87	45% (0.3 mm)

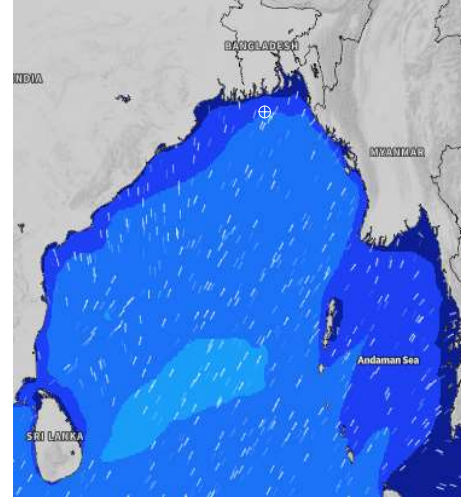
02 Oct 2024



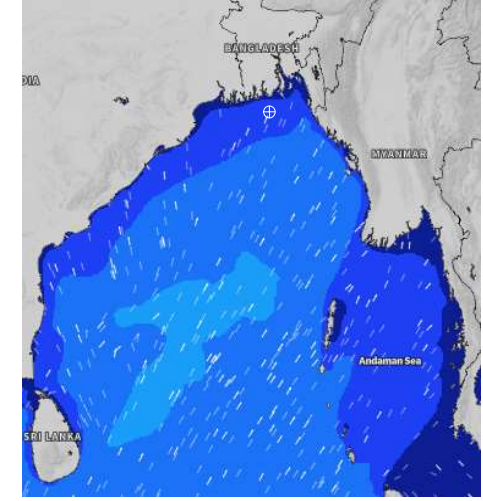
03 Oct 2024



04 Oct 2024



05 Oct 2024



Significant wave height (m)



MARINE WEATHER FORECAST (02 to 09 Oct 2024) 40 NM ESE OF PAYRA FAIRWAY (21° 07' N, 090° 45' E)



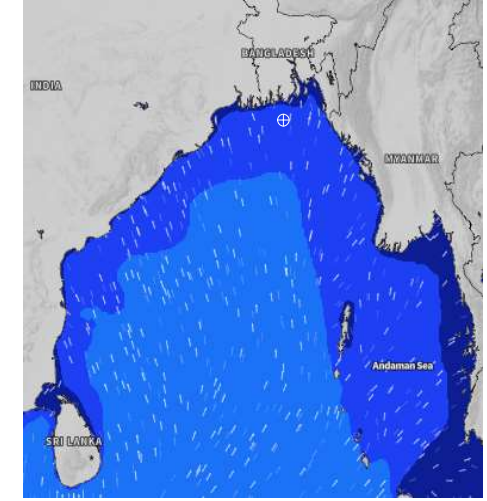
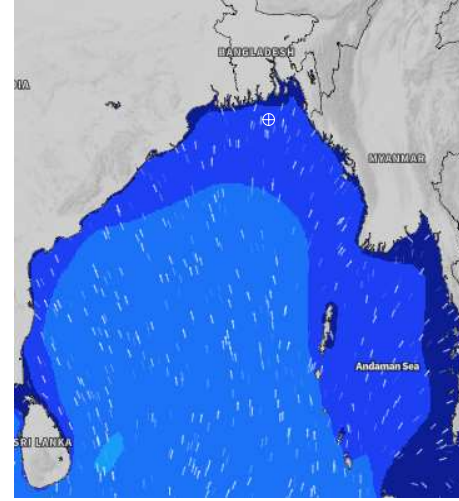
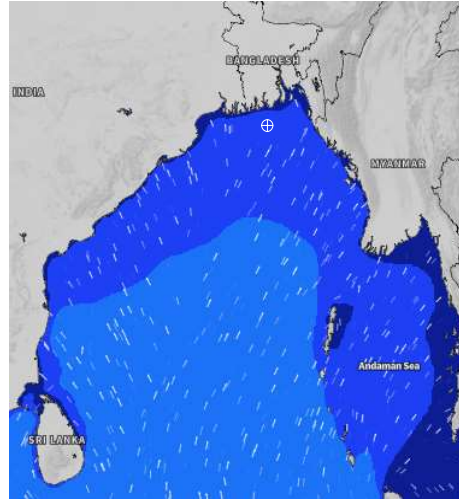
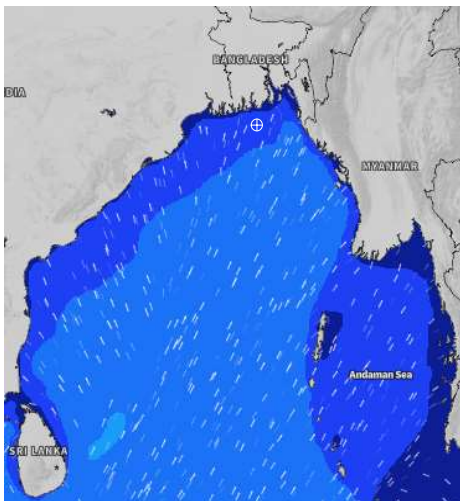
Date	Time	Air Temp (°C)		Sea Surface Temp (°C)	Baro Pressure (mbar)	Wind Direction	Wind Spd (kts)		Wave Ht (m)	Sea State	Humidity (%)	Prob of Rain
		Max	Min				Max	Avg				
06-10-24 (Sunday)	0001	30	27	29	1007	S	10	9	1.2	3	91	74% (0.9 mm)
	0600			28	1007	S	6	5	1.2	3	91	66% (0.6 mm)
	1200			29	1008	SSE	10	9	1.2	3	82	73% (0.7 mm)
	1800			29	1007	S	9	8	1.2	3	86	74% (0.6 mm)
07-10-24 (Monday)	0001	31	27	29	1008	S	10	9	1.2	3	90	60% (0.6 mm)
	0600			28	1008	SSW	8	7	1.1	3	91	55% (0.5 mm)
	1200			29	1009	S	11	10	1.1	3	85	57% (0.5 mm)
	1800			29	1008	SSW	10	9	1.0	3	88	47% (0.3 mm)
08-10-24 (Tuesday)	0001	31	27	29	1010	S	10	9	1.0	3	90	59% (0.5 mm)
	0600			28	1010	SSE	7	6	0.9	3	94	50% (0.5 mm)
	1200			29	1011	SSE	6	5	0.9	3	85	71% (1.1 mm)
	1800			29	1010	SSE	9	8	0.9	3	85	74% (0.9 mm)
09-10-24 (Wednesday)	0001	31	27	29	1011	SSW	12	11	1.0	3	90	66% (0.4 mm)
	0600			28	1010	S	8	7	1.0	3	94	80% (1.2 mm)
	1200			28	1011	SSE	11	10	1.0	3	85	74% (0.6 mm)
	1800			28	1009	SSE	17	16	1.3	4	85	66% (0.4 mm)

06 Oct 2024

07 Oct 2024

08 Oct 2024

09 Oct 2024



Significant wave height (m)

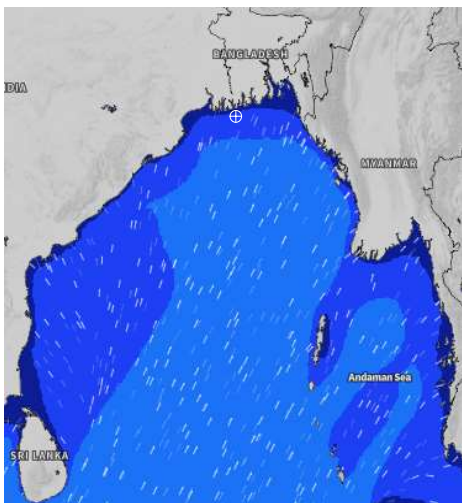


MARINE WEATHER FORECAST (02 to 09 Oct 2024) 10 NM SOUTH OF MONGLA FAIRWAY (21° 16' N, 089° 34' E)

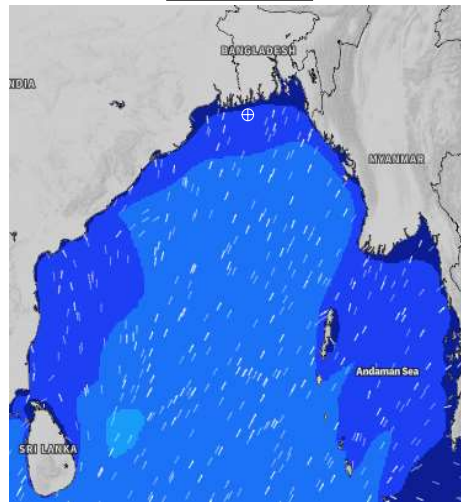


Date	Time	Air Temp (°C)		Sea Surface Temp (°C)	Baro Pressure (mbar)	Wind Direction	Wind Spd (kts)		Wave Ht (m)	Sea State	Humidity (%)	Prob of Rain
		Max	Min				Max	Avg				
02-10-24 (Wednesday)	0001	31	26	30	1005	WSW	10	9	1.0	3	94	20% (0.0 mm)
	0600			29	1005	WNW	13	11	1.0	3	96	18% (0.0 mm)
	1200			29	1005	WNW	6	5	0.9	3	80	97% (1.3 mm)
	1800			30	1004	SSW	5	4	0.9	3	88	35% (0.2 mm)
03-10-24 (Thursday)	0001	30	26	29	1005	WSW	7	7	0.9	3	94	45% (0.4 mm)
	0600			29	1004	WNW	4	4	0.9	3	96	51% (0.4 mm)
	1200			30	1004	N	5	5	1.0	3	84	60% (0.5 mm)
	1800			29	1004	SSE	5	5	1.1	3	87	33% (0.2 mm)
04-10-24 (Friday)	0001	29	26	29	1005	SW	13	12	1.2	3	92	74% (0.6 mm)
	0600			28	1005	SW	12	11	1.4	4	94	66% (0.4 mm)
	1200			26	1007	WNW	8	7	1.3	4	87	73% (0.7 mm)
	1800			27	1006	NW	4	4	1.2	3	88	78% (0.6 mm)
05-10-24 (Saturday)	0001	30	26	28	1007	SSE	8	7	1.1	3	92	69% (0.4 mm)
	0600			29	1007	SSW	7	6	1.1	3	94	70% (0.7 mm)
	1200			29	1008	SSW	6	5	1.1	3	81	77% (0.7 mm)
	1800			29	1006	SSW	8	7	1.0	3	87	69% (0.6 mm)

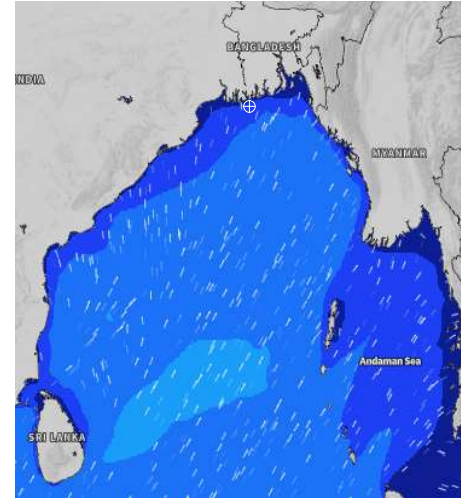
02 Oct 2024



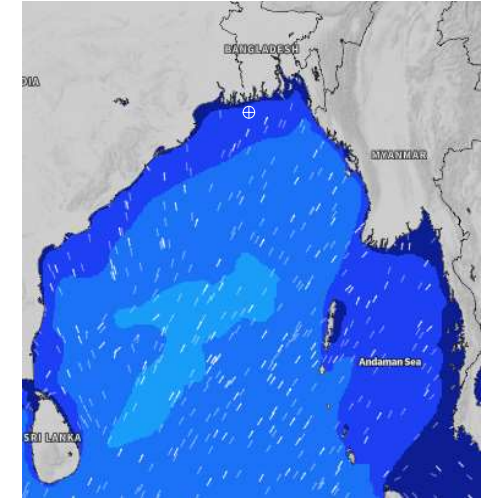
03 Oct 2024



04 Oct 2024



05 Oct 2024



Significant wave height (m)

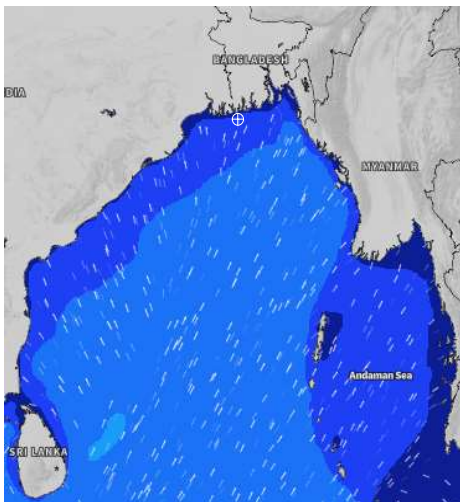


MARINE WEATHER FORECAST (02 to 09 Oct 2024) 10 NM SOUTH OF MONGLA FAIRWAY (21° 16' N, 089° 34' E)

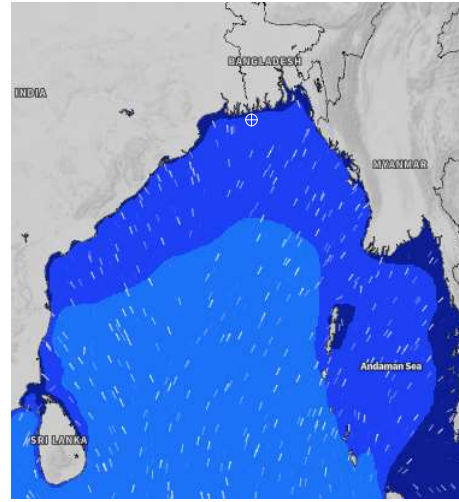


Date	Time	Air Temp (°C)		Sea Surface Temp (°C)	Baro Pressure (mbar)	Wind Direction	Wind Spd (kts)		Wave Ht (m)	Sea State	Humidity (%)	Prob of Rain
		Max	Min				Max	Avg				
06-10-24 (Sunday)	0001	31	26	29	1007	SSE	10	9	0.9	3	92	78% (0.7 mm)
	0600			29	1006	S	9	8	0.9	3	94	71% (0.7 mm)
	1200			29	1007	S	8	7	0.9	3	80	74% (0.6 mm)
	1800			30	1006	S	10	8	0.9	3	86	66% (0.6 mm)
07-10-24 (Monday)	0001	31	26	29	1008	SSW	12	11	1.0	3	92	73% (0.7 mm)
	0600			29	1007	SSW	8	7	1.0	3	93	66% (0.6 mm)
	1200			29	1008	SSW	7	6	1.0	3	81	40% (0.4 mm)
	1800			29	1008	SW	12	11	1.0	3	87	36% (0.2 mm)
08-10-24 (Tuesday)	0001	32	26	29	1009	S	12	11	1.1	3	92	73% (0.7 mm)
	0600			29	1010	S	11	10	1.2	3	94	74% (0.6 mm)
	1200			29	1011	S	6	5	1.2	3	81	66% (0.4 mm)
	1800			29	1009	SW	14	12	1.1	3	86	73% (0.7 mm)
09-10-24 (Wednesday)	0001	32	26	29	1011	SSW	12	11	1.0	3	90	77% (0.7 mm)
	0600			29	1010	S	8	7	1.0	3	91	69% (0.7 mm)
	1200			29	1010	SSE	7	6	1.0	3	83	58% (0.5 mm)
	1800			29	1008	S	12	10	1.0	3	86	32% (0.2 mm)

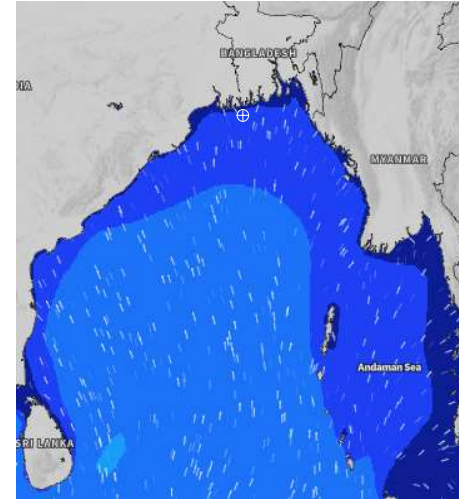
06 Oct 2024



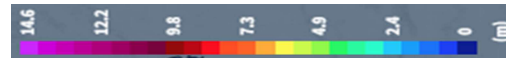
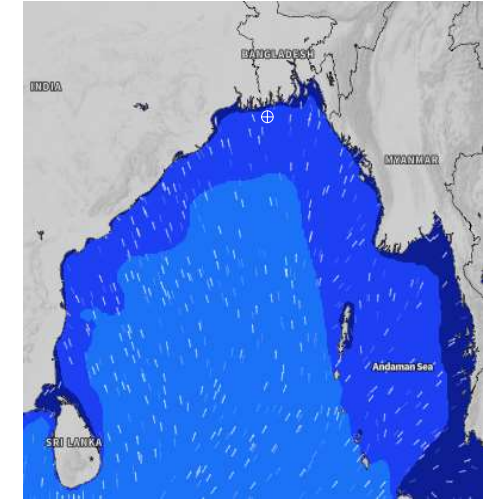
07 Oct 2024



08 Oct 2024



09 Oct 2024



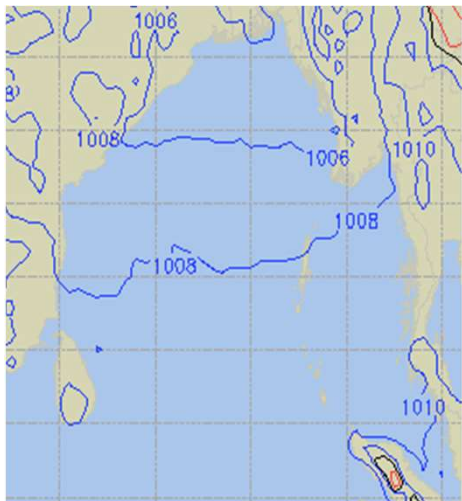
Significant wave height (m)



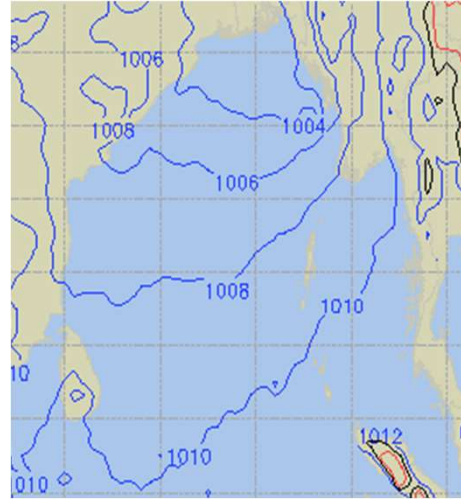
PREDICTED SURFACE PRESSURE FORECAST (02 to 08 Oct 2024)



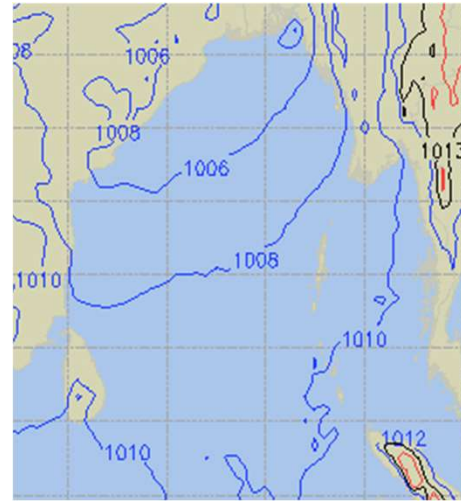
02 Oct 2024



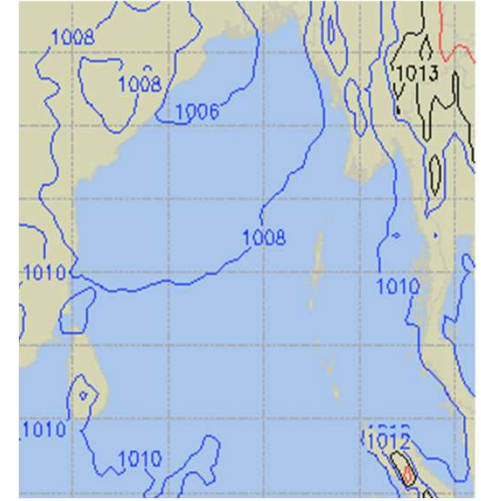
03 Oct 2024



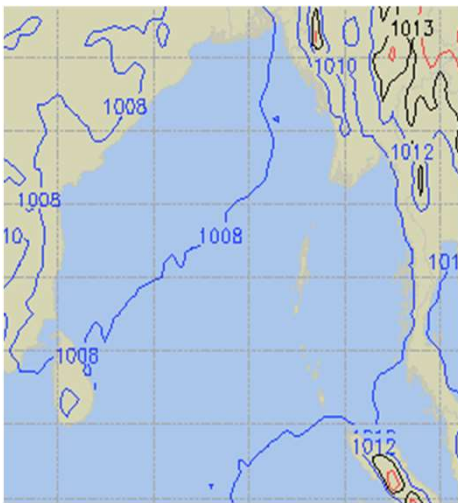
04 Oct 2024



05 Oct 2024



06 Oct 2024



07 Oct 2024



08 Oct 2024

