



SUMMARY OF MARINE WEATHER FORECAST

COASTAL AREA OF BANGLADESH

DATE: 02 TO 09 AUG 2024



Fleet forecast	Due to strong monsoon deep convection is taking place and steep pressure gradient observed over North Bay. Maritime ports of Chattogram, Cox's Bazar, Mongla and Payra have been advised to keep hoisted local cautionary signal no-3
Wind direction, speed	South/south-easterly 15 kts, (Temporary gusting up to 22 kts).
Wave height & sea state	Wave height: 0.3 to 2.7 m (Sea state:1 to 5).
Sea surface temperature	27°C - 29°C (May remain nearly unchanged).
Baro pressure	1000 - 1009 mb
Rainfall	Light to moderate rain/thunder showers over Bay of Bengal & adjoining area with moderately heavy to very heavy falls at place over Barishal, Chattogram and Sylhet divisions.

Outlook for 02 to 09 Aug 2024: Rainfall activity may increase initially and decrease at the end of said period.

MARINE WEATHER FORECAST- NEAR AUTHORITY BUOY (Lat 22° 12'N, Long 091° 38'E)

DATE : 02 to 09 Aug 2024

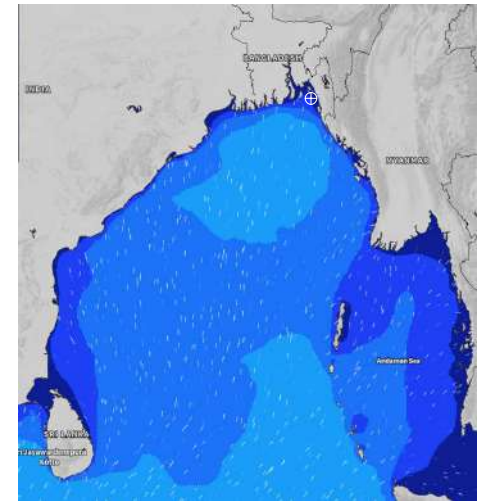
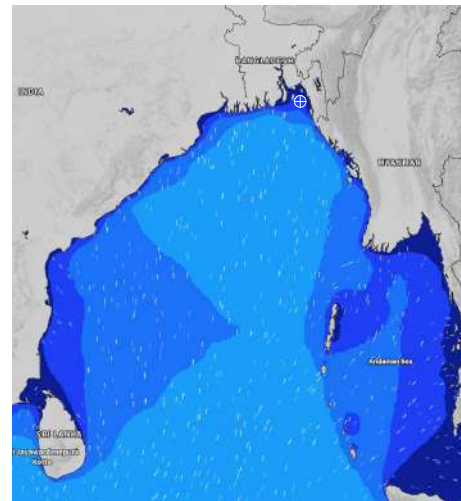
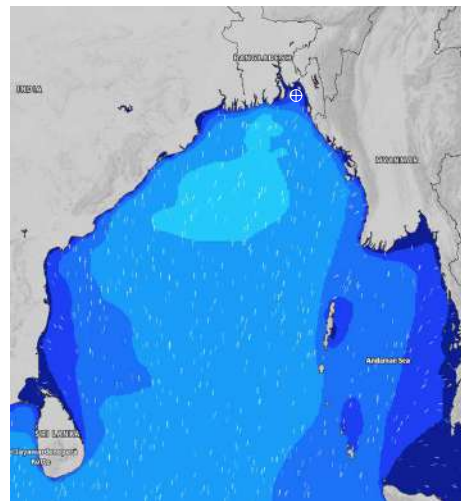
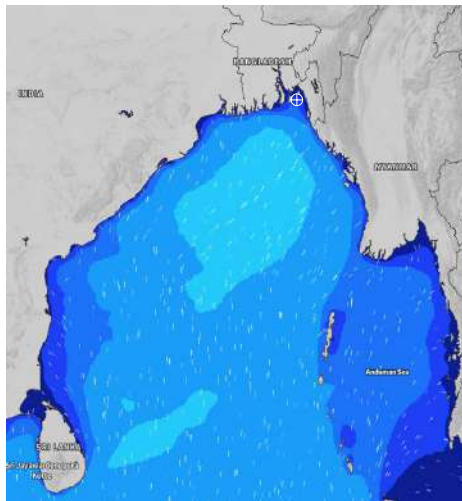
Date	Time	Max Wind Spd (kts)	Wind Direction	Wave Ht (m)	Sea State	Baro Pressure	Air Temp		Sea Surface Temp	Humidity (%)	Prob of Rain (%)	Sea State	Wave Ht (m)
							Max	Min					
02-08-24	0001	21	SSE	0.5	2	1004	29	26	27	93%	94% (5.2 mm)	0	0
	0600	22	SSE	0.6	3	1003			26	96%	85% (4.6 mm)	1	0 - 0.1
	1200	20	SSE	0.5	2	1004			27	91%	99% (5.4 mm)	2	0.1 - 0.5
	1800	19	SSE	0.5	2	1004			27	93%	75% (1.9 mm)	3	0.5 - 1.25
03-08-24	0001	17	SE	0.4	2	1006	29	26	27	93%	55% (0.5 mm)	4	1.25 - 2.5
	0600	17	SSE	0.4	2	1005			26	95%	55% (0.6 mm)	5	2.5 - 4.0
	1200	18	S	0.4	2	1005			27	90%	68% (0.7 mm)	6	4.0 - 6.0
	1800	17	S	0.5	2	1004			27	92%	41% (0.4 mm)	7	6.0 - 9.0
04-08-24	0001	15	SSE	0.4	2	1007	29	26	27	91%	53% (0.5 mm)	8	9.0 - 14.0
	0600	15	SE	0.3	2	1005			28	93%	71% (0.8 mm)	9	Over 14.0
	1200	17	S	0.4	2	1005			27	83%	61% (0.7 mm)		
	1800	14	S	0.3	2	1004			27	89%	40% (0.4 mm)		
05-08-24	0001	14	SSE	0.3	2	1007	29	26	27	92%	59% (0.6 mm)		
	0600	15	SSE	0.3	2	1006			26	94%	64% (0.6 mm)		
	1200	14	SSE	0.4	2	1007			28	86%	76% (0.7 mm)		
	1800	13	SSE	0.3	2	1006			27	88%	56% (0.5 mm)		

02 Aug 24 Fri (Probability 98%)

03 Aug 24 Sat (Probability 95%)

04 Aug 24 Sun (Probability 90%)

05 Aug 24 Mon (Probability 80%)



Significant wave height (m)

MARINE WEATHER FORECAST- NEAR AUTHORITY BUOY (Lat 22° 12'N, Long 091° 38'E)

DATE : 02 to 09 Aug 2024

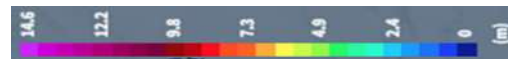
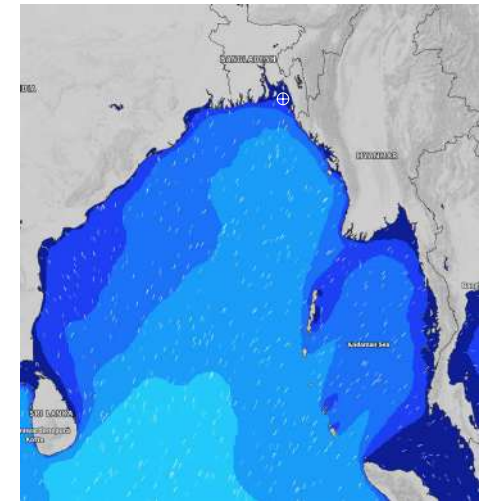
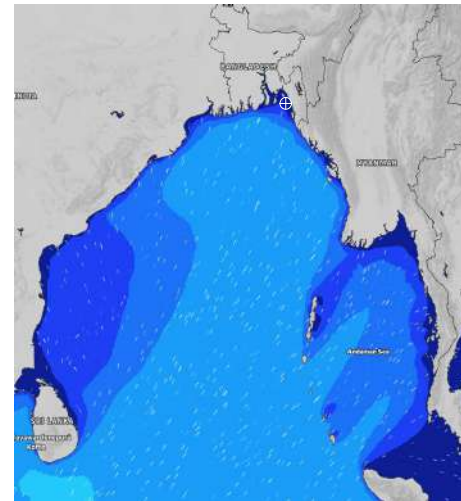
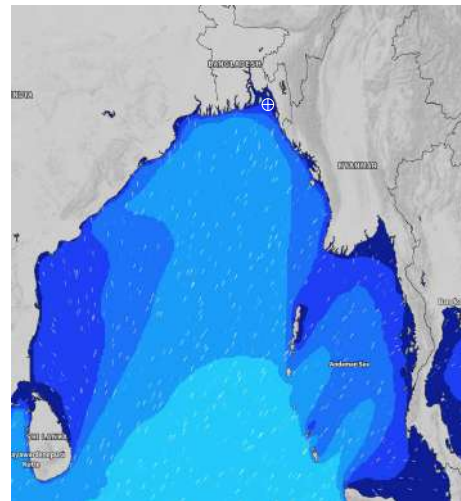
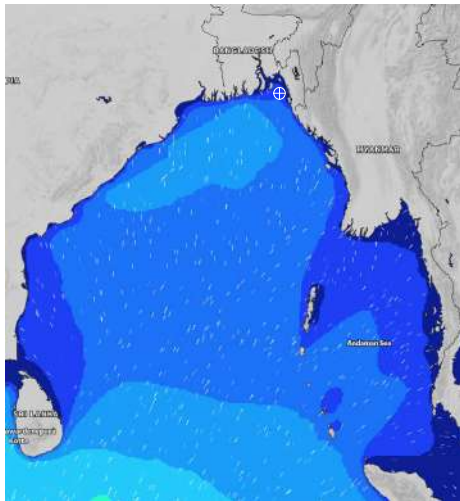
Date	Time	Max Wind Spd (kts)	Wind Direction	Wave Ht (m)	Sea State	Baro Pressure	Air Temp		Sea Surface Temp	Humidity (%)	Prob of Rain (%)	Sea State	Wave Ht (m)
							Max	Min					
06-08-24	0001	15	SE	0.4	2	1008	30	26	27	91%	73% (0.7 mm)	0	0
	0600	15	SSE	0.3	2	1007			26	93%	64% (0.6 mm)	1	0 - 0.1
	1200	17	S	0.4	2	1008			27	81%	78% (0.8 mm)	2	0.1 - 0.5
	1800	17	S	0.5	2	1005			28	89%	36% (0.2 mm)	3	0.5 - 1.25
07-08-24	0001	15	SSE	0.4	2	1007	30	26	27	89%	68% (0.7 mm)	4	1.25 - 2.5
	0600	15	SSE	0.4	2	1007			26	93%	69% (0.7 mm)	5	2.5 - 4.0
	1200	17	S	0.4	2	1008			27	82%	82% (0.8 mm)	6	4.0 - 6.0
	1800	18	SSE	0.5	2	1006			28	88%	76% (0.7 mm)	7	6.0 - 9.0
08-08-24	0001	16	SSE	0.4	2	1008	30	26	27	89%	78% (0.8 mm)	8	9.0 - 14.0
	0600	17	SSE	0.4	2	1007			27	91%	75% (0.8 mm)	9	Over 14.0
	1200	15	S	0.4	2	1008			28	81%	73% (0.7 mm)		
	1800	14	SSE	0.3	2	1007			27	87%	70% (0.7 mm)		
09-08-24	0001	12	SSE	0.3	2	1007	30	26	27	89%	68% (0.7 mm)		
	0600	14	SSE	0.3	2	1006			27	90%	66% (0.6 mm)		
	1200	13	SE	0.3	2	1007			28	76%	63% (0.6 mm)		
	1800	15	SSE	0.4	2	1006			27	83%	55% (0.5 mm)		

06 Aug 24 Tue (Probability 70%)

07 Aug 24 Wed (Probability 60%)

08 Aug 24 Thu (Probability 50%)

09 Aug 24 Fri (Probability 50%)



Significant wave height (m)

MARINE WEATHER FORECAST- 20 NM WEST OF ELEPHANT POINT (Lat 21° 10'N, Long 091° 42' E)

DATE : 02 to 09 Aug 2024

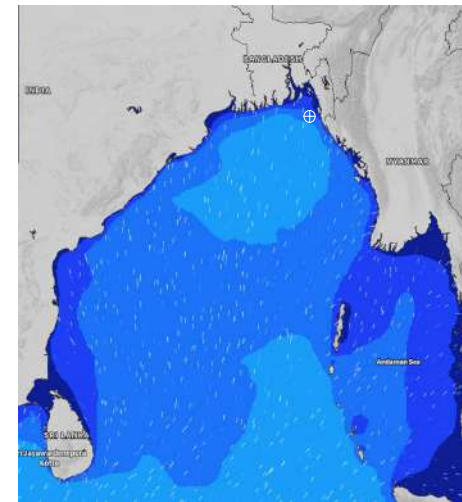
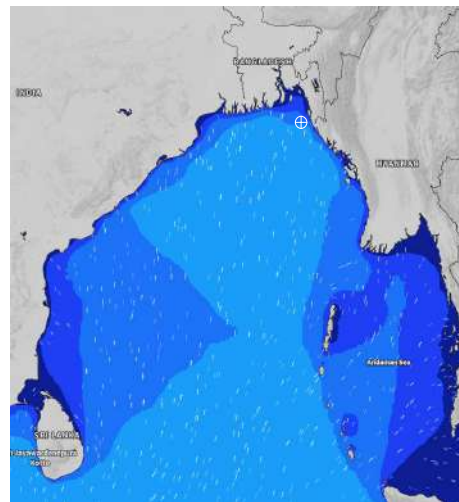
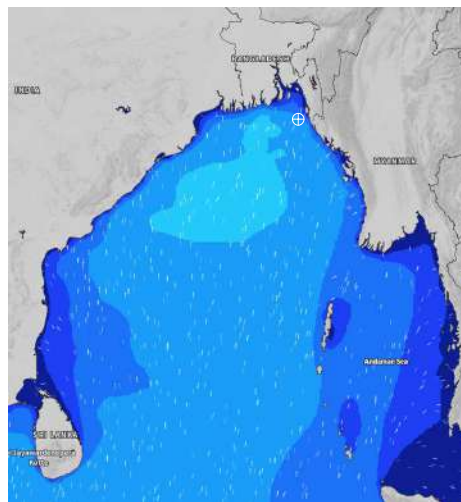
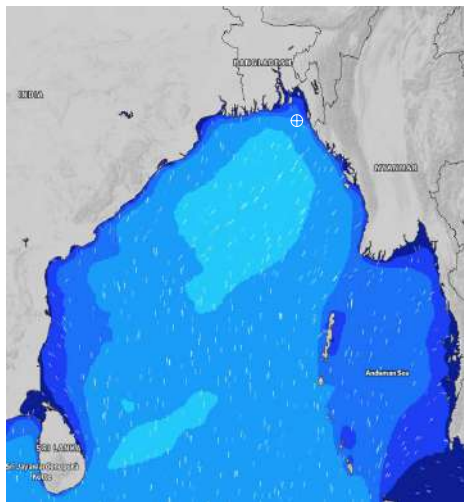
Date	Time	Max Wind Spd (kts)	Wind Direction	Wave Ht (m)	Sea State	Baro Pressure	Air Temp		Sea Surface Temp	Humidity (%)	Prob of Rain (%)	Sea State	Wave Ht (m)
							Max	Min					
02-08-24	0001	21	SSE	2.2	4	1004	29	26	27	92%	92% (5.6 mm)	0	0
	0600	18	S	2.0	4	1003			27	94%	87% (2.5 mm)	1	0 - 0.1
	1200	17	S	1.9	4	1005			28	91%	98% (5.7 mm)	2	0.1 - 0.5
	1800	15	S	1.9	4	1004			27	93%	76% (1.5 mm)	3	0.5 - 1.25
03-08-24	0001	19	SSE	1.9	4	1006	29	26	27	92%	54% (0.5 mm)	4	1.25 - 2.5
	0600	19	SE	1.8	4	1005			27	95%	53% (0.6 mm)	5	2.5 - 4.0
	1200	17	SSE	1.7	4	1006			28	90%	65% (0.6 mm)	6	4.0 - 6.0
	1800	17	S	1.8	4	1005			27	92%	46% (0.4 mm)	7	6.0 - 9.0
04-08-24	0001	14	S	1.7	4	1007	29	26	27	89%	57% (0.6 mm)	8	9.0 - 14.0
	0600	13	S	1.6	4	1005			27	93%	75% (0.8 mm)	9	Over 14.0
	1200	12	S	1.6	4	1006			28	88%	63% (0.6 mm)		
	1800	14	SSW	1.5	4	1005			28	89%	46% (0.5 mm)		
05-08-24	0001	14	S	1.5	4	1007	29	26	27	89%	54% (0.5 mm)		
	0600	13	SSE	1.5	4	1006			27	92%	65% (0.6 mm)		
	1200	11	SSE	1.4	4	1007			28	82%	77% (0.7 mm)		
	1800	12	SE	1.4	4	1006			28	88%	55% (0.5 mm)		

02 Aug 24 Fri (Probability 98%)

03 Aug 24 Sat (Probability 95%)

04 Aug 24 Sun (Probability 90%)

05 Aug 24 Mon (Probability 80%)



Significant wave height (m)

MARINE WEATHER FORECAST- 20 NM WEST OF ELEPHANT POINT (Lat 21° 10'N, Long 091° 42' E)

DATE : 02 to 09 Aug 2024

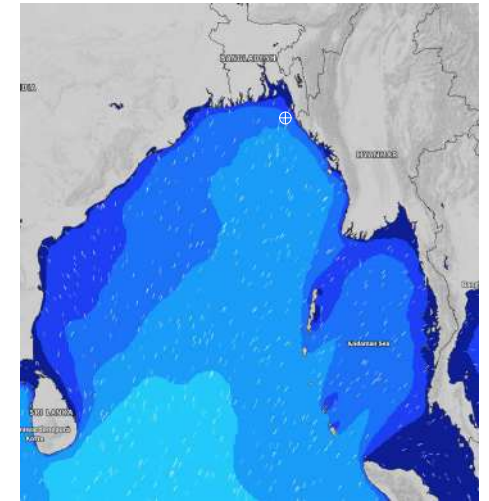
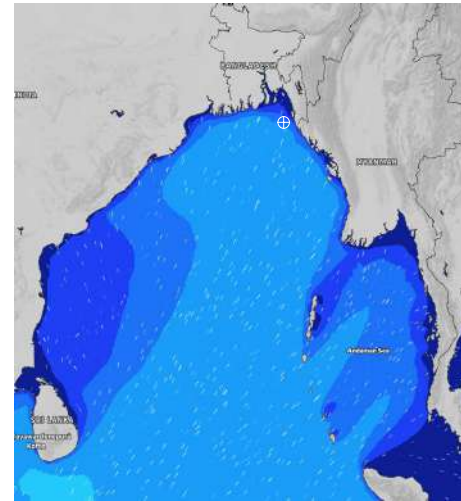
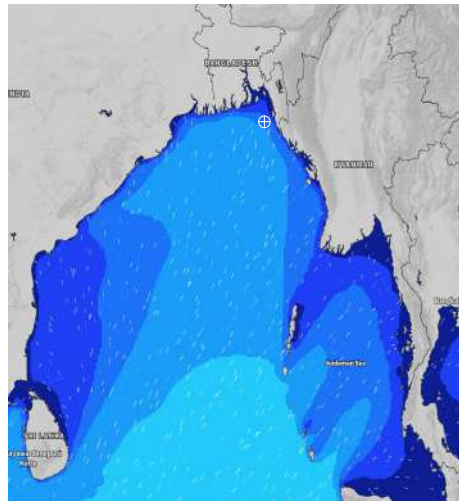
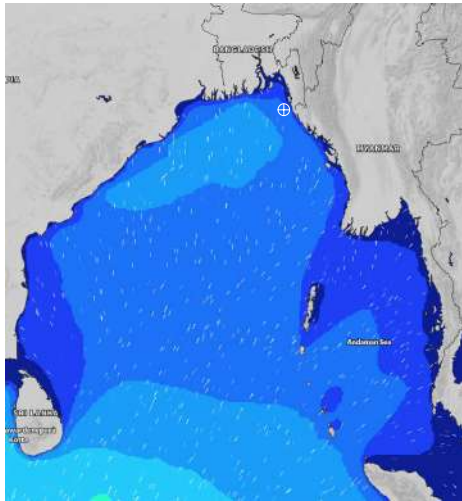
Date	Time	Max Wind Spd (kts)	Wind Direction	Wave Ht (m)	Sea State	Baro Pressure	Air Temp		Sea Surface Temp	Humidity (%)	Prob of Rain (%)	Sea State	Wave Ht (m)
							Max	Min					
06-08-24	0001	16	S	1.6	4	1008	29	26	27	90%	71% (0.7 mm)	0	0
	0600	16	SSE	1.5	4	1007			27	94%	62% (0.6 mm)	1	0 - 0.1
	1200	20	SSE	1.5	4	1008			27	89%	74% (0.8 mm)	2	0.1 - 0.5
	1800	15	S	1.3	4	1005			28	90%	36% (0.2 mm)	3	0.5 - 1.25
07-08-24	0001	15	S	1.3	4	1007	30	26	28	90%	63% (0.7 mm)	4	1.25 - 2.5
	0600	15	SSE	1.3	4	1007			27	93%	65% (0.7 mm)	5	2.5 - 4.0
	1200	16	SSE	1.4	4	1006			28	84%	84% (0.8 mm)	6	4.0 - 6.0
	1800	16	SSE	1.5	4	1005			28	89%	76% (0.7 mm)	7	6.0 - 9.0
08-08-24	0001	16	SSE	1.5	4	1008	30	26	27	92%	72% (0.8 mm)	8	9.0 - 14.0
	0600	15	SSE	1.6	4	1007			27	94%	74% (0.8 mm)	9	Over 14.0
	1200	16	SSE	1.5	4	1008			28	83%	75% (0.7 mm)		
	1800	11	SS	1.4	4	1007			28	89%	73% (0.7 mm)		
09-08-24	0001	13	S	1.4	4	1007	30	26	27	90%	66% (0.7 mm)		
	0600	14	SSE	1.4	4	1006			27	94%	62% (0.6 mm)		
	1200	16	SSE	1.4	4	1007			28	82%	64% (0.6 mm)		
	1800	15	SSE	1.4	4	1006			28	88%	53% (0.5 mm)		

06 Aug 24 Tue (Probability 70%)

07 Aug 24 Wed (Probability 60%)

08 Aug 24 Thu (Probability 50%)

09 Aug 24 Fri (Probability 50%)



Significant wave height (m)

MARINE WEATHER FORECAST- 15 NM WEST OF ST. MARTIN'S LIGHT HOUSE (Lat 20° 37'N, Long 092° 03' E)

DATE : 02 to 09 Aug 2024

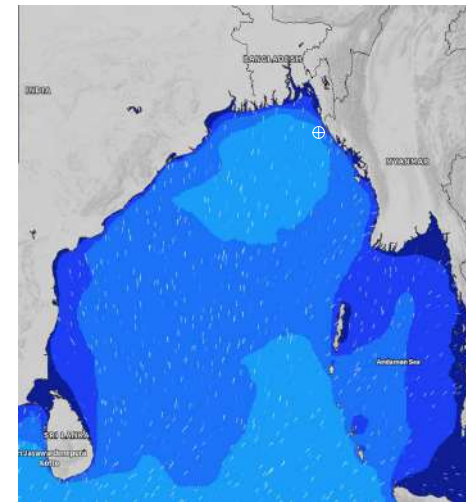
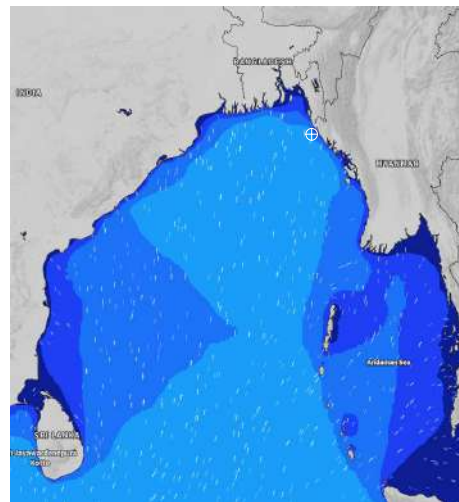
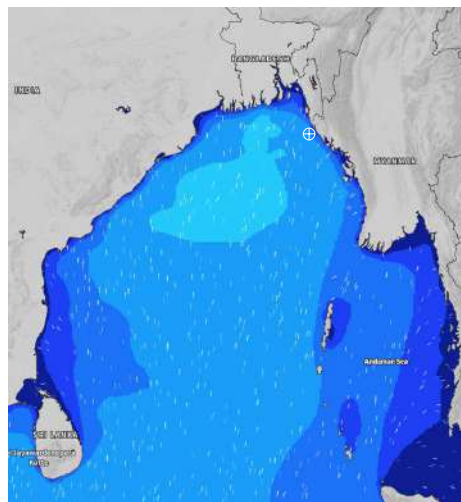
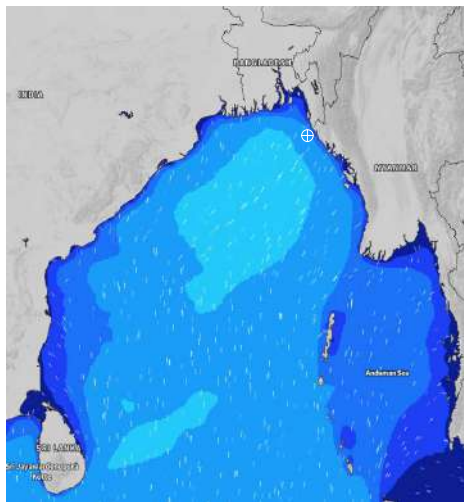
Date	Time	Max Wind Spd (kts)	Wind Direction	Wave Ht (m)	Sea State	Baro Pressure	Air Temp		Sea Surface Temp	Humidity (%)	Prob of Rain(%)	Sea State	Wave Ht (m)
							Max	Min					
02-08-24	0001	16	S	2.5	4	1005	29	26	27	91%	92% (3.5 mm)	0	0
	0600	17	SSW	2.3	4	1004			27	96%	88% (2.1 mm)	1	0 - 0.1
	1200	15	S	2.3	4	1005			28	91%	98% (5.4 mm)	2	0.1 - 0.5
	1800	14	SSW	2.3	4	1004			27	92%	67% (1.1 mm)	3	0.5 - 1.25
03-08-24	0001	15	SSE	2.1	4	1007	29	26	27	92%	91% (2.6 mm)	4	1.25 - 2.5
	0600	14	SSE	2.0	4	1005			27	94%	89% (2.1 mm)	5	2.5 - 4.0
	1200	14	S	2.0	4	1007			28	88%	86% (1.5 mm)	6	4.0 - 6.0
	1800	16	S	2.1	4	1005			27	90%	55% (0.5 mm)	7	6.0 - 9.0
04-08-24	0001	15	S	2.0	4	1007	29	26	27	92%	57% (0.6 mm)	8	9.0 - 14.0
	0600	12	SSW	1.9	4	1005			27	95%	78% (0.8 mm)	9	Over 14.0
	1200	12	SSW	1.9	4	1007			28	89%	75% (0.7 mm)		
	1800	15	SW	1.9	4	1005			28	90%	36% (0.2 mm)		
05-08-24	0001	13	SSW	1.8	4	1007	29	26	27	91%	54% (0.5 mm)		
	0600	10	SSW	1.7	4	1006			27	92%	79% (0.8 mm)		
	1200	11	SW	1.7	4	1007			28	86%	76% (0.7 mm)		
	1800	12	SSW	1.7	4	1006			27	89%	38% (0.4 mm)		

02 Aug 24 Fri (Probability 98%)

03 Aug 24 Sat (Probability 95%)

04 Aug 24 Sun (Probability 90%)

05 Aug 24 Mon (Probability 80%)



Significant wave height (m)

MARINE WEATHER FORECAST- 15 NM WEST OF ST. MARTIN'S LIGHT HOUSE (Lat 20° 37'N, Long 092° 03'E)

DATE : 02 to 09 Aug 2024

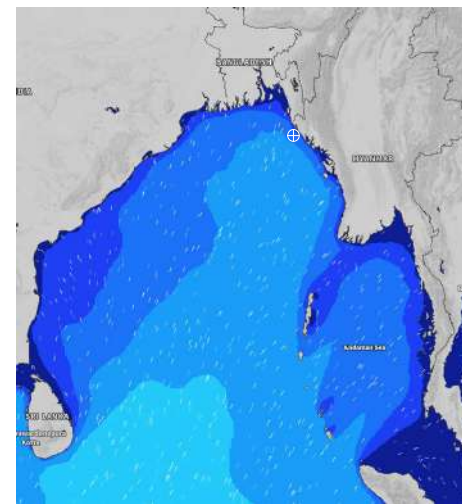
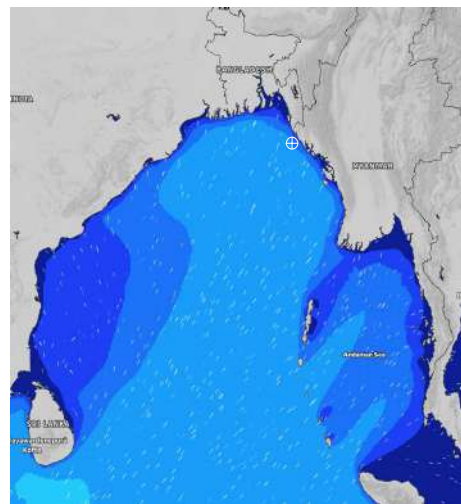
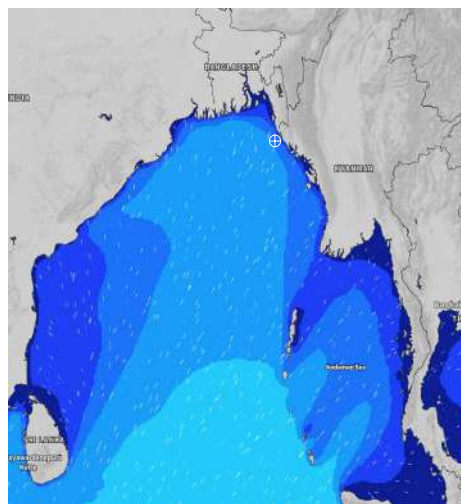
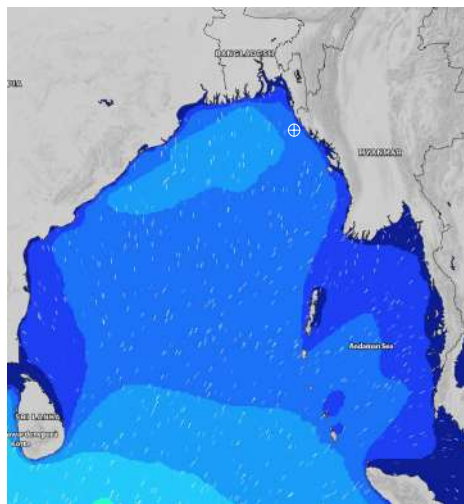
Date	Time	Max Wind Spd (kts)	Wind Direction	Wave Ht (m)	Sea State	Baro Pressure	Air Temp		Sea Surface Temp	Humidity (%)	Prob of Rain (%)	Sea State	Wave Ht (m)
							Max	Min					
06-08-24	0001	15	S	1.7	4	1009	30	26	27	90%	66% (0.6 mm)	0	0
	0600	13	SSE	1.6	4	1006			27	94%	75% (0.7 mm)	1	0 - 0.1
	1200	16	SSE	1.6	4	1008			28	78%	77% (0.7 mm)	2	0.1 - 0.5
	1800	13	S	1.4	4	1005			28	89%	74% (0.8 mm)	3	0.5 - 1.25
07-08-24	0001	12	S	1.4	4	1008	30	26	28	88%	65% (0.6 mm)	4	1.25 - 2.5
	0600	11	S	1.4	4	1006			27	93%	66% (0.6 mm)	5	2.5 - 4.0
	1200	12	S	1.5	4	1009			28	78%	63% (0.6 mm)	6	4.0 - 6.0
	1800	12	S	1.7	4	1006			28	86%	55% (0.5 mm)	7	6.0 - 9.0
08-08-24	0001	12	SSE	1.7	4	1009	30	27	28	89%	64% (0.6 mm)	8	9.0 - 14.0
	0600	11	SSE	1.6	4	1007			27	91%	66% (0.6 mm)	9	Over 14.0
	1200	12	SSE	1.7	4	1009			28	76%	62% (0.6 mm)		
	1800	9	S	1.7	4	1007			28	85%	55% (0.5 mm)		
09-08-24	0001	8	S	1.7	4	1008	30	27	28	88%	64% (0.6 mm)		
	0600	7	S	1.6	4	1006			27	94%	63% (0.6 mm)		
	1200	8	SSE	1.6	4	1007			28	81%	65% (0.6 mm)		
	1800	9	SE	1.6	4	1006			28	89%	56% (0.5 mm)		

06 Aug 24 Tue (Probability 70%)

07 Aug 24 Wed (Probability 60%)

08 Aug 24 Thu (Probability 50%)

09 Aug 24 Fri (Probability 50%)



Significant wave height (m)

MARINE WEATHER FORECAST- 40 NM ESE OF PAYRA FAIRWAY (Lat 21° 07' N, Long 090° 45' E)

DATE : 02 to 09 Aug 2024

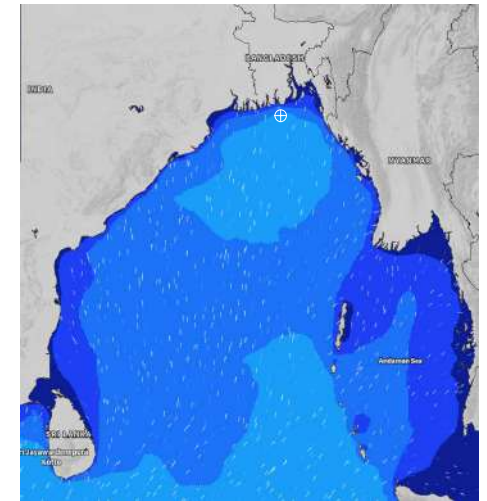
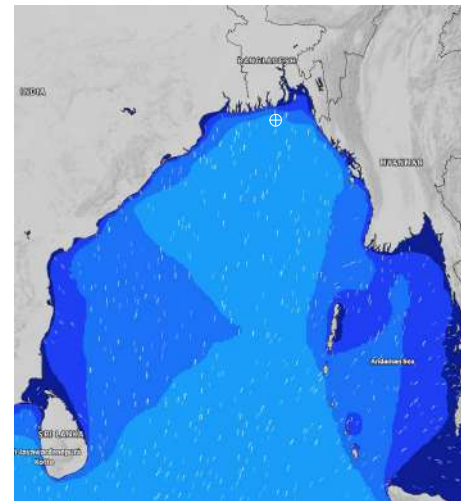
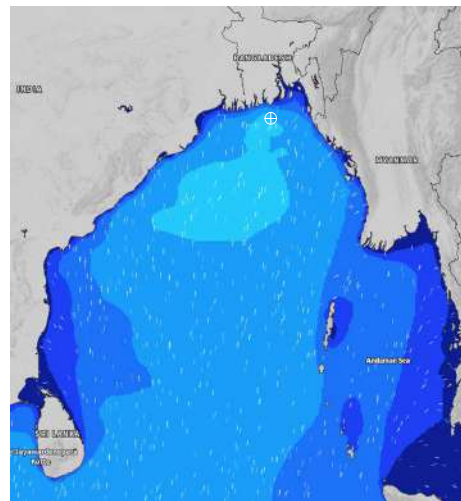
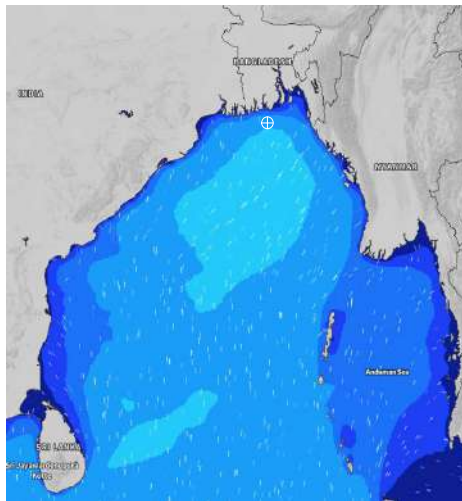
Date	Time	Max Wind Spd (kts)	Wind Direction	Wave Ht (m)	Sea State	Baro Pressure	Air Temp		Sea Surface Temp	Humidity (%)	Prob of Rain (%)	Sea State	Wave Ht (m)
							Max	Min					
02-08-24	0001	21	S	2.7	5	1003	29	26	28	93%	89% (2.3 mm)	0	0
	0600	20	SSW	2.6	5	1002			27	96%	94% (2.8 mm)	1	0 - 0.1
	1200	21	SSW	2.7	5	1003			28	89%	97% (2.9 mm)	2	0.1 - 0.5
	1800	16	SSW	2.5	4	1003			28	92%	65% (0.8 mm)	3	0.5 - 1.25
03-08-24	0001	19	SSE	2.4	4	1005	29	26	27	94%	83% (0.8 mm)	4	1.25 - 2.5
	0600	18	S	2.3	4	1004			27	96%	97% (1.7 mm)	5	2.5 - 4.0
	1200	19	S	2.3	4	1005			28	89%	86% (0.9 mm)	6	4.0 - 6.0
	1800	16	S	2.1	4	1004			28	90%	45% (0.5 mm)	7	6.0 - 9.0
04-08-24	0001	18	SSW	2.2	4	1006	29	26	27	91%	86% (0.8 mm)	8	9.0 - 14.0
	0600	16	SSW	2.0	4	1005			27	94%	98% (1.7 mm)	9	Over 14.0
	1200	15	SSW	2.0	4	1006			28	89%	87% (0.9 mm)		
	1800	15	SSW	1.9	4	1004			28	90%	45% (0.5 mm)		
05-08-24	0001	12	SSW	1.8	4	1006	29	26	28	93%	86% (0.6 mm)		
	0600	13	SW	1.7	4	1006			27	95%	95% (1.5 mm)		
	1200	13	SSW	1.7	4	1007			28	88%	86% (0.8 mm)		
	1800	14	SSW	1.7	4	1006			28	90%	44% (0.5 mm)		

02 Aug 24 Fri (Probability 98%)

03 Aug 24 Sat (Probability 95%)

04 Aug 24 Sun (Probability 90%)

05 Aug 24 Mon (Probability 80%)



Significant wave height (m)

MARINE WEATHER FORECAST- 40 NM ESE OF PAYRA FAIRWAY (Lat 21° 07' N, Long 090° 45' E)

DATE : 02 to 09 Aug 2024

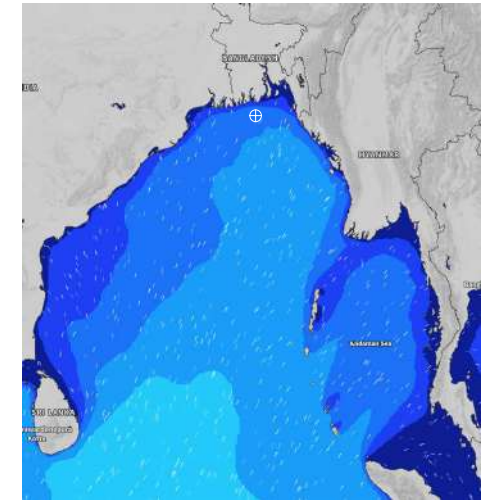
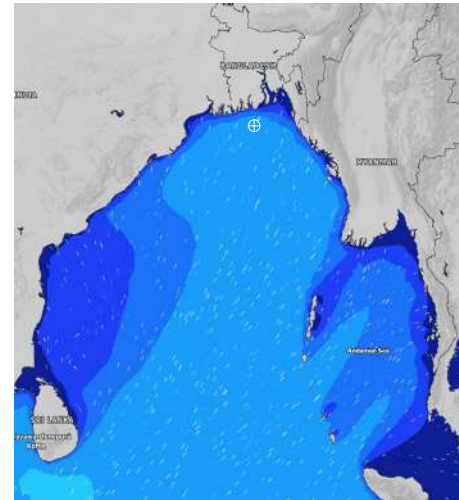
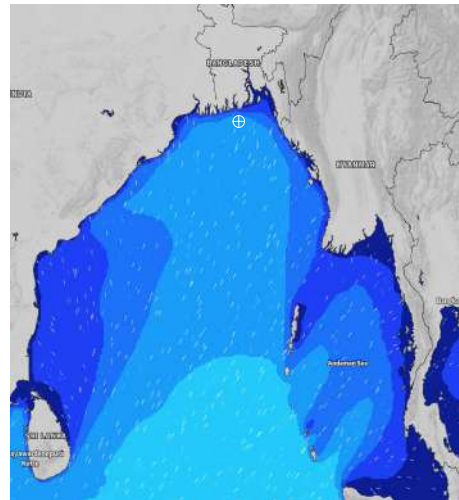
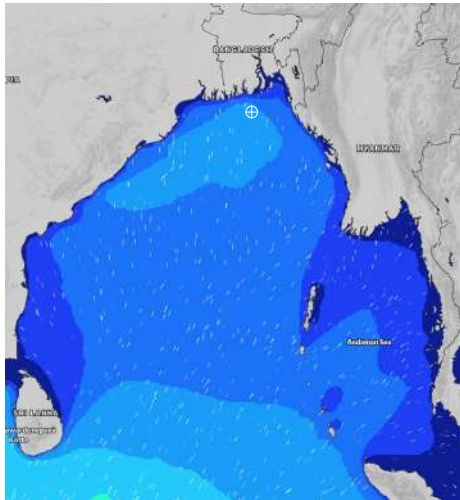
Date	Time	Max Wind Spd (kts)	Wind Direction	Wave Ht (m)	Sea State	Baro Pressure	Air Temp		Sea Surface Temp	Humidity (%)	Prob of Rain (%)	Sea State	Wave Ht (m)
							Max	Min					
06-08-24	0001	18	S	2.0	4	1007	29	26	28	89%	74% (0.7 mm)	0	0
	0600	14	S	1.8	4	1006			27	91%	72% (0.7 mm)	1	0 - 0.1
	1200	13	SSW	1.6	4	1007			28	83%	76% (0.8 mm)	2	0.1 - 0.5
	1800	14	SSW	1.6	4	1005			28	88%	43% (0.4 mm)	3	0.5 - 1.25
07-08-24	0001	18	S	1.7	4	1006	30	27	28	90%	65% (0.6 mm)	4	1.25 - 2.5
	0600	16	SSW	1.7	4	1006			27	94%	64% (0.6 mm)	5	2.5 - 4.0
	1200	18	SSW	1.9	4	1006			28	85%	68% (0.6 mm)	6	4.0 - 6.0
	1800	17	SSW	2.0	4	1006			29	89%	57% (0.5 mm)	7	6.0 - 9.0
08-08-24	0001	18	SSW	2.0	4	1007	30	27	28	90%	66% (0.7 mm)	8	9.0 - 14.0
	0600	16	SSW	1.9	4	1007			27	93%	65% (0.7 mm)	9	Over 14.0
	1200	13	SSW	1.8	4	1006			28	81%	62% (0.6 mm)		
	1800	12	SSW	1.8	4	1007			28	88%	56% (0.6 mm)		
09-08-24	0001	14	SSW	1.8	4	1006	30	27	28	91%	63% (0.6 mm)		
	0600	14	SSW	1.9	4	1007			27	94%	65% (0.6 mm)		
	1200	15	SSW	1.9	4	1006			28	74%	62% (0.6 mm)		
	1800	14	SSW	1.9	4	1005			28	86%	54% (0.5 mm)		

06 Aug 24 Tue (Probability 70%)

07 Aug 24 Wed (Probability 60%)

08 Aug 24 Thu (Probability 50%)

09 Aug 24 Fri (Probability 50%)



Significant wave height (m)

MARINE WEATHER FORECAST- 10 NM SOUTH OF MONGLA FAIRWAY (Lat 21° 16'N, Long 089° 34'E)

DATE : 02 to 09 Aug 2024

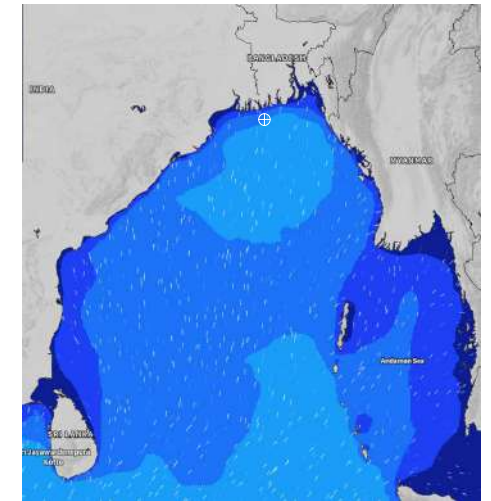
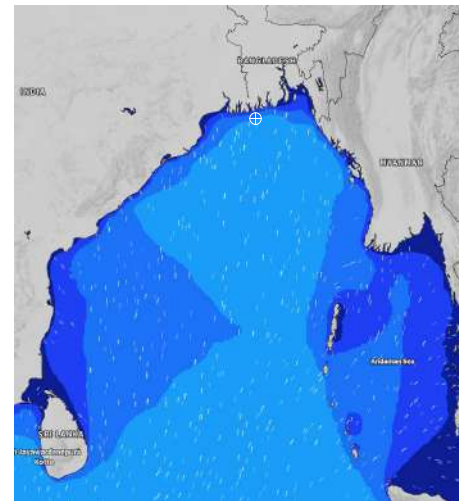
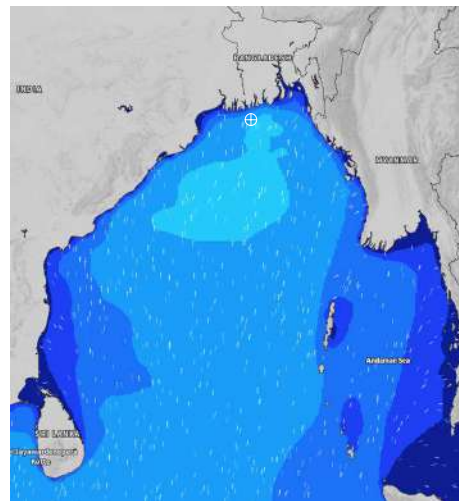
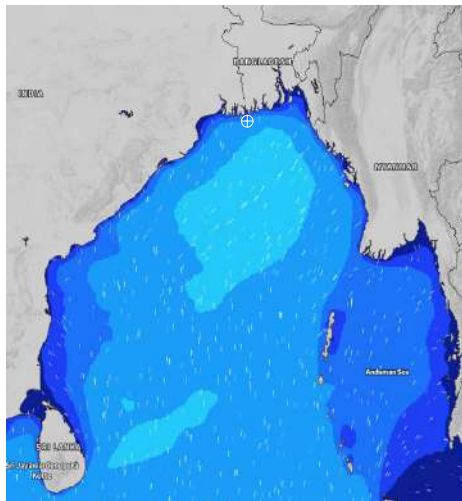
Date	Time	Max Wind Spd (kts)	Wind Direction	Wave Ht (m)	Sea State	Baro Pressure	Air Temp		Sea Surface Temp	Humidity (%)	Prob of Rain (%)	Sea State	Wave Ht (m)
							Max	Min					
02-08-24	0001	20	SSW	2.5	4	1001	29	26	28	91%	96% (2.5 mm)	0	0
	0600	20	SSW	2.6	5	1000			28	94%	91% (2.4 mm)	1	0 - 0.1
	1200	20	SSW	2.5	4	1001			29	89%	91% (2.2 mm)	2	0.1 - 0.5
	1800	18	SSW	2.5	4	1001			29	90%	45% (0.5 mm)	3	0.5 - 1.25
03-08-24	0001	21	S	2.5	4	1003	29	26	28	93%	46% (0.5 mm)	4	1.25 - 2.5
	0600	17	S	2.4	4	1003			28	95%	52% (0.5 mm)	5	2.5 - 4.0
	1200	13	SSW	2.1	4	1004			29	88%	87% (1.2 mm)	6	4.0 - 6.0
	1800	16	SSW	2.1	4	1003			29	90%	22% (0.0 mm)	7	6.0 - 9.0
04-08-24	0001	15	SSW	2.0	4	1005	29	26	28	91%	48% (0.4 mm)	8	9.0 - 14.0
	0600	12	SW	1.9	4	1004			28	93%	53% (0.5 mm)	9	Over 14.0
	1200	14	SW	1.9	4	1005			29	84%	85% (1.1 mm)		
	1800	15	SW	1.8	4	1003			28	89%	21% (0.0 mm)		
05-08-24	0001	13	SW	1.7	4	1005	30	27	28	90%	46% (0.4 mm)		
	0600	13	SW	1.6	4	1005			28	93%	53% (0.5 mm)		
	1200	14	SSW	1.6	4	1006			29	81%	85% (0.8 mm)		
	1800	12	SW	1.6	4	1003			28	89%	20% (0.0 mm)		

02 Aug 24 Fri (Probability 98%)

03 Aug 24 Sat (Probability 95%)

04 Aug 24 Sun (Probability 90%)

05 Aug 24 Mon (Probability 80%)



Significant wave height (m)

MARINE WEATHER FORECAST- 10 NM SOUTH OF MONGLA FAIRWAY (Lat 21° 16'N, Long 089° 34'E)

DATE : 02 to 09 Aug 2024

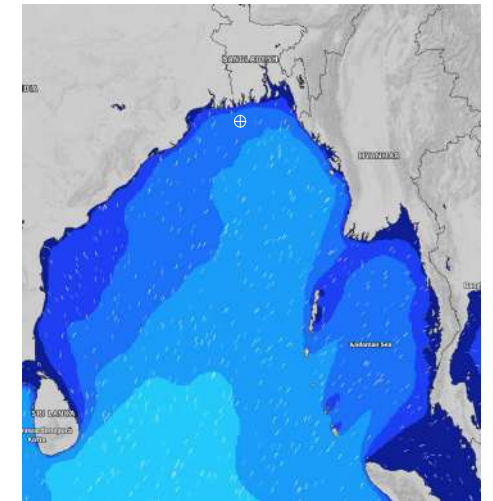
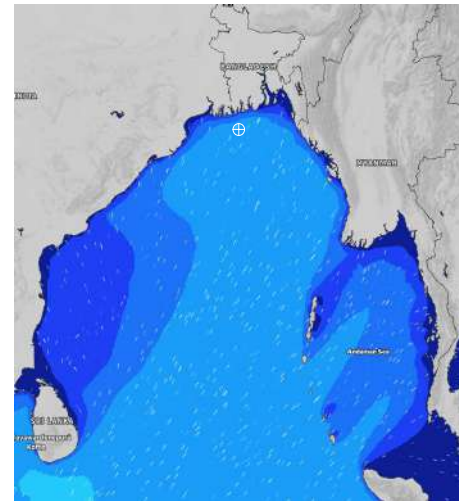
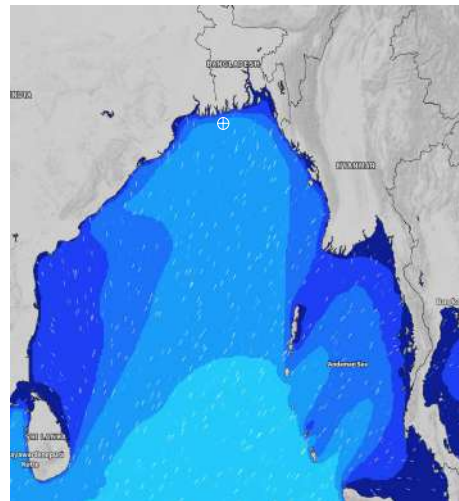
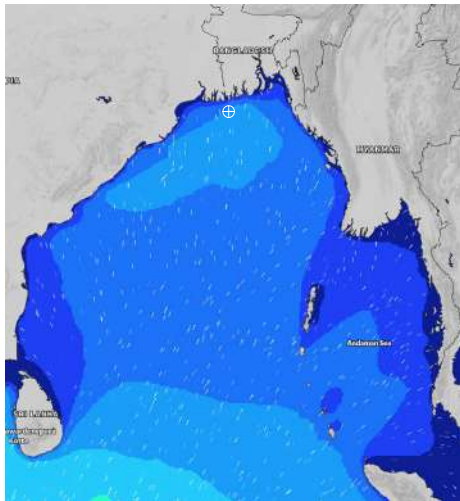
Date	Time	Max Wind Spd (kts)	Wind Direction	Wave Ht (m)	Sea State	Baro Pressure	Air Temp		Sea Surface Temp	Humidity (%)	Prob of Rain (%)	Sea State	Wave Ht (m)
							Max	Min					
06-08-24	0001	14	SSW	1.7	4	1006	30	27	28	90%	41% (0.4 mm)	0	0
	0600	15	SSW	1.7	4	1005			27	92%	75% (0.7 mm)	1	0 - 0.1
	1200	14	SSW	1.6	4	1006			28	81%	73% (0.7 mm)	2	0.1 - 0.5
	1800	14	SSW	1.6	4	1004			29	89%	16% (0.0 mm)	3	0.5 - 1.25
07-08-24	0001	15	SSW	1.6	4	1005	30	27	28	89%	41% (0.4 mm)	4	1.25 - 2.5
	0600	16	SSW	1.6	4	1005			27	92%	64% (0.6 mm)	5	2.5 - 4.0
	1200	18	SSW	1.9	4	1006			29	77%	65% (0.6 mm)	6	4.0 - 6.0
	1800	17	SSW	1.9	4	1005			29	88%	26% (0.0 mm)	7	6.0 - 9.0
08-08-24	0001	19	SSW	1.9	4	1006	30	27	28	89%	45% (0.4 mm)	8	9.0 - 14.0
	0600	19	SSW	2.1	4	1005			27	92%	62% (0.6 mm)	9	Over 14.0
	1200	18	SSW	2.0	4	1006			29	76%	63% (0.6 mm)		
	1800	17	SSW	1.9	4	1005			29	89%	25% (0.0 mm)		
09-08-24	0001	17	SSW	1.8	4	1006	30	27	28	89%	46% (0.4 mm)		
	0600	13	SSW	1.7	4	1004			27	90%	62% (0.6 mm)		
	1200	15	SSW	1.8	4	1005			29	76%	64% (0.6 mm)		
	1800	14	SSW	1.7	4	1004			29	88%	23% (0.0 mm)		

06 Aug 24 Tue (Probability 70%)

07 Aug 24 Wed (Probability 60%)

08 Aug 24 Thu (Probability 50%)

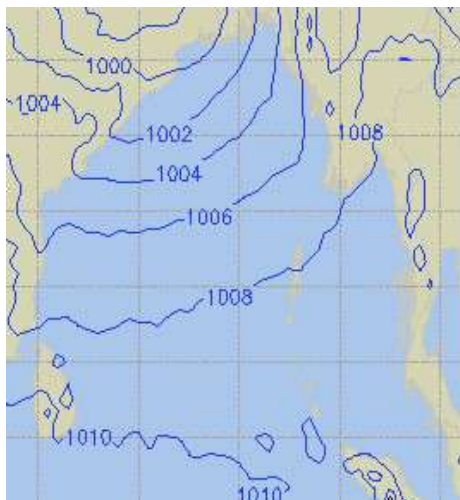
09 Aug 24 Fri (Probability 50%)



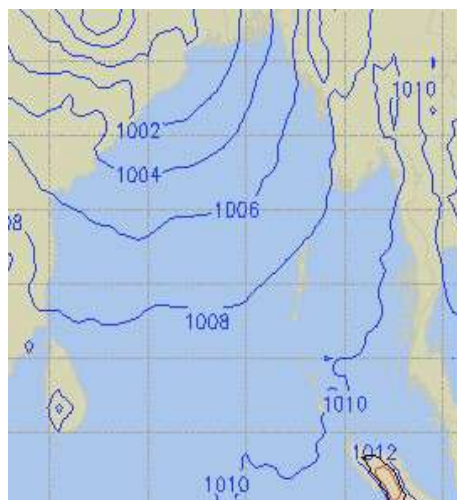
Significant wave height (m)

PREDICTED SURFACE PRESSURE FORECAST (02 Aug to 08 Aug 2024)

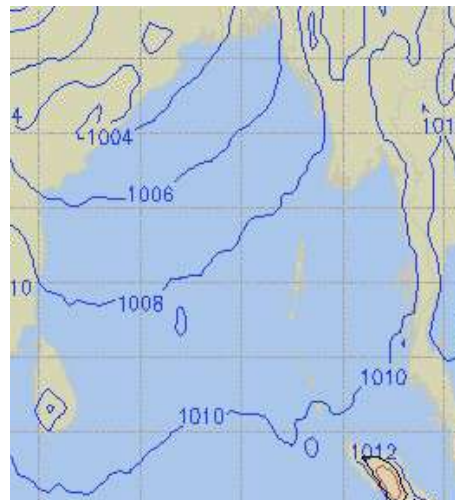
02 Aug 24 Fri (Probability 98%)



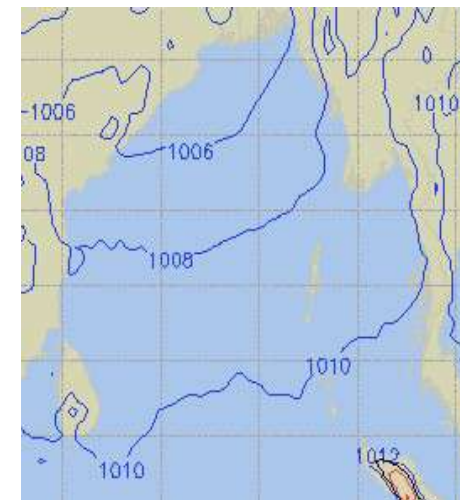
03 Aug 24 Sat (Probability 95%)



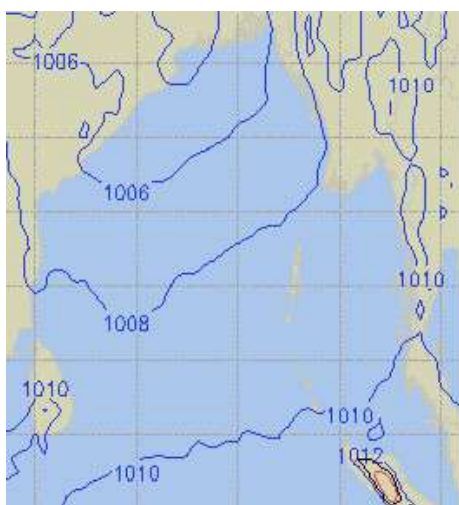
04 Aug 24 Sun (Probability 90%)



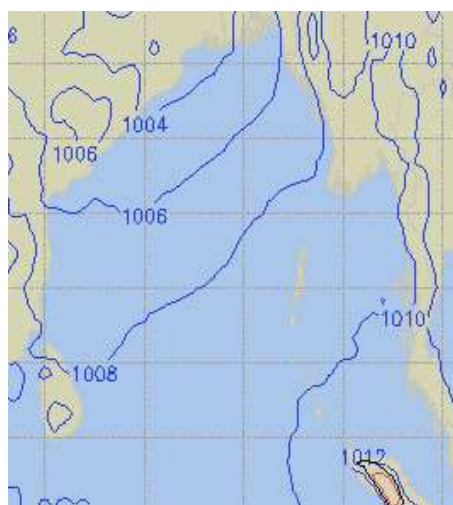
05 Aug 24 Mon (Probability 80%)



06 Aug 24 Tue (Probability 70%)



07 Aug 24 Wed (Probability 60%)



08 Thu 24 Tue (Probability 50%)

