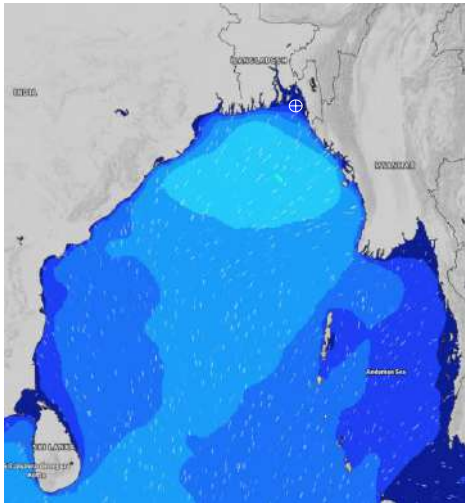


**MARINE WEATHER FORECAST- NEAR AUTHORITY BUOY (Lat 22° 12' N, Long 091° 38' E)**

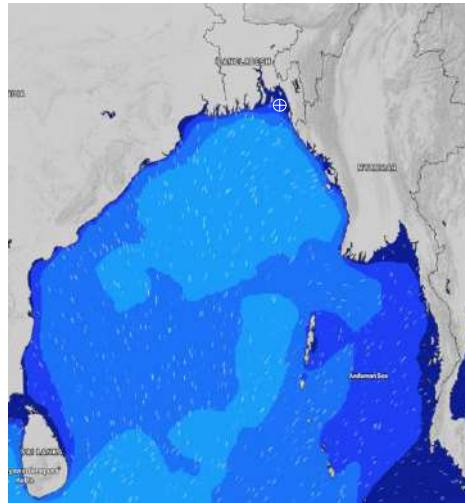
**DATE : 02 to 09 July 2024**

Date	Time	Max Wind Spd (kts)	Wind Direction	Wave Ht (m)	Sea State	Baro Pressure	Air Temp		Sea Surface Temp	Humidity (%)	Prb of Rain (%)	Sea State	Wave Ht (m)
							Max	Min					
02-07-24	0001	18	S	0.4	2	1002	28	26	28	95%	32% (0.2 mm)	0	0
	0600	16	S	0.3	2	1001			27	96%	55% (0.7 mm)	1	0 - 0.1
	1200	14	SSE	0.3	2	1002			27	94%	98% (4.8 mm)	2	0.1 - 0.5
	1800	14	SSE	0.3	2	1000			27	93%	70% (0.9 mm)	3	0.5 - 1.25
03-07-24	0001	13	SSW	0.2	2	1001	28	26	27	94%	98% (4.3 mm)	4	1.25 - 2.5
	0600	9	SE	0.2	2	1001			26	96%	99% (3.4 mm)	5	2.5 - 4.0
	1200	19	SSW	0.4	2	1003			26	94%	91% (2.5 mm)	6	4.0 - 6.0
	1800	18	SSE	0.4	2	1004			27	93%	59% (1.1 mm)	7	6.0 - 9.0
04-07-24	0001	23	SSE	0.4	2	1005	29	26	26	93%	55% (0.3 mm)	8	9.0 - 14.0
	0600	16	SE	0.3	2	1003			25	93%	65% (0.5 mm)	9	Over 14.0
	1200	20	SSE	0.4	2	1005			26	90%	76% (0.6 mm)		
	1800	18	SSE	0.4	2	1004			27	91%	70% (0.6 mm)		
05-07-24	0001	24	SSE	0.4	2	1005	28	26	26	94%	71% (0.6 mm)		
	0600	24	SSE	0.5	2	1004			26	94%	95% (1.4 mm)		
	1200	19	SSE	0.4	2	1004			26	90%	91% (1.0 mm)		
	1800	17	SE	0.3	2	1003			27	90%	60% (0.9 mm)		

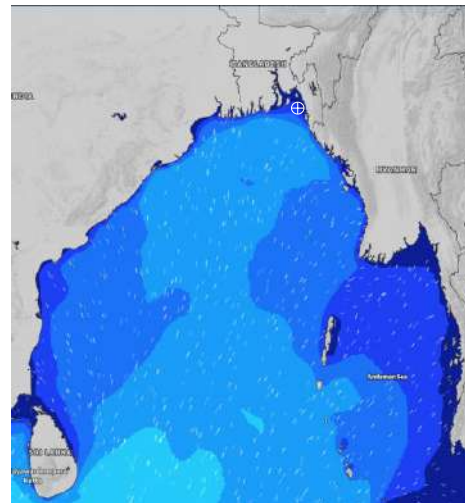
**02 July 24 Tue (Probability 98%)**



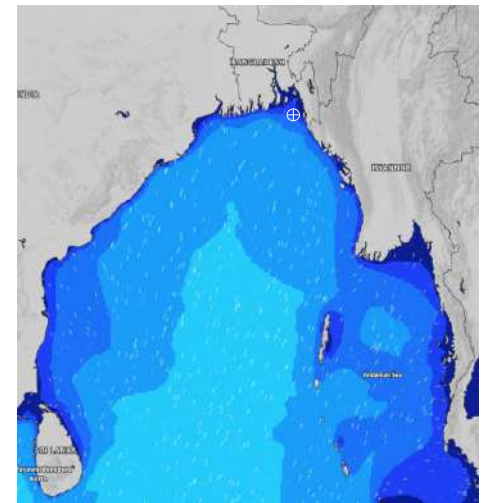
**03 July 24 Wed (Probability 95%)**



**04 July 24 Thu (Probability 90%)**



**05 July 24 Fri (Probability 80%)**



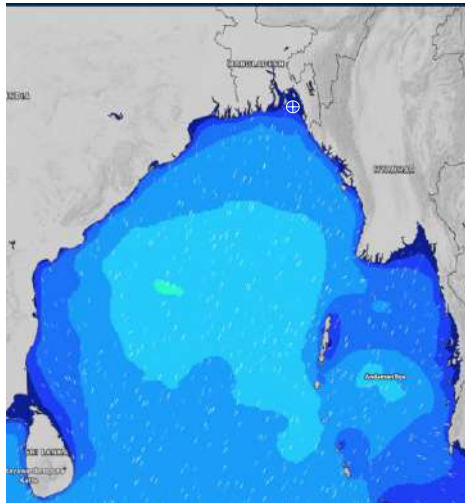
Significant wave height (m)

**MARINE WEATHER FORECAST- NEAR AUTHORITY BUOY (Lat 22° 12' N, Long 091° 38' E)**

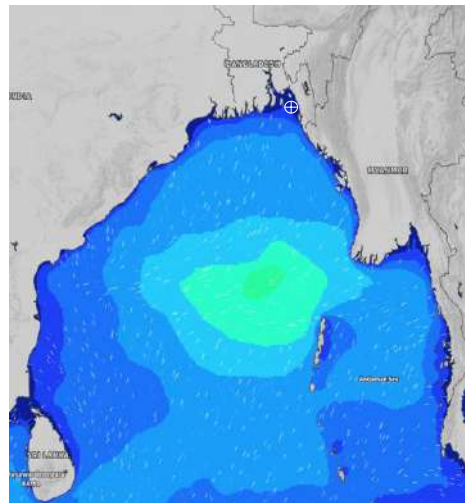
**DATE : 02 to 09 July 2024**

Date	Time	Max Wind Spd (kts)	Wind Direction	Wave Ht (m)	Sea State	Baro Pressure	Air Temp		Sea Surface Temp	Humidity (%)	Prob of Rain (%)	Sea State	Wave Ht (m)
							Max	Min					
06-07-24	0001	20	SSE	0.3	2	1003	29	26	27	93%	78% (1.4 mm)	0	0
	0600	22	SSE	0.4	2	1003			27	96%	81% (1.5 mm)	1	0 - 0.1
	1200	16	SSE	0.3	2	1004			28	94%	69% (1.1 mm)	2	0.1 - 0.5
	1800	13	S	0.3	2	1002			28	93%	70% (1.4 mm)	3	0.5 - 1.25
07-07-24	0001	14	SSE	0.3	2	1003	30	26	27	94%	81% (1.5 mm)	4	1.25 - 2.5
	0600	10	SE	0.2	2	1002			27	96%	75% (1.1 mm)	5	2.5 - 4.0
	1200	8	SW	0.1	1	1002			29	96%	66% (1.3 mm)	6	4.0 - 6.0
	1800	12	SSW	0.2	2	1000			28	94%	69% (1.4 mm)	7	6.0 - 9.0
08-07-24	0001	16	SSE	0.2	2	1002	31	26	27	90%	71% (0.6 mm)	8	9.0 - 14.0
	0600	14	ESE	0.2	2	1001			28	92%	53% (0.4 mm)	9	Over 14.0
	1200	7	SSW	0.1	1	1001			30	89%	36% (0.2 mm)		
	1800	19	SSE	0.3	2	1001			29	90%	24% (0.1 mm)		
09-07-24	0001	26	SE	0.3	2	1003	30	26	27	90%	61% (0.6 mm)		
	0600	25	SE	0.3	2	1003			27	92%	53% (0.4 mm)		
	1200	21	SSE	0.3	2	1005			29	89%	36% (0.2 mm)		
	1800	26	SSE	0.5	2	1005			27	90%	30% (0.2 mm)		

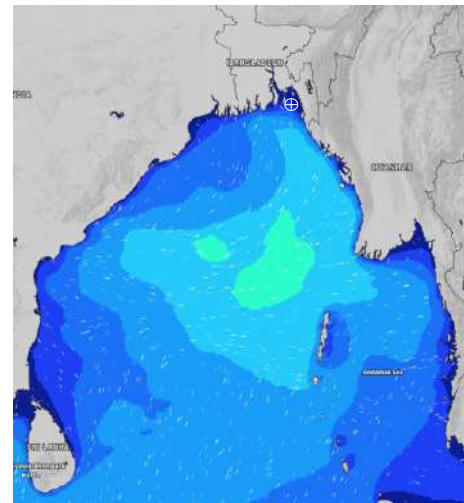
**06 July 24 Sat (Probability 70%)**



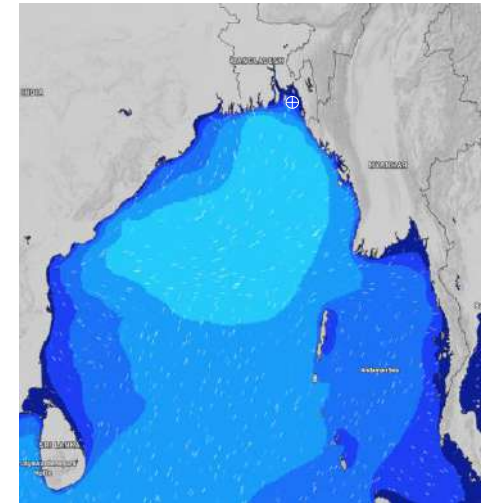
**07 July 24 Sun (Probability 60%)**



**08 July 24 Mon (Probability 50%)**



**09 July 24 Tue (Probability 50%)**



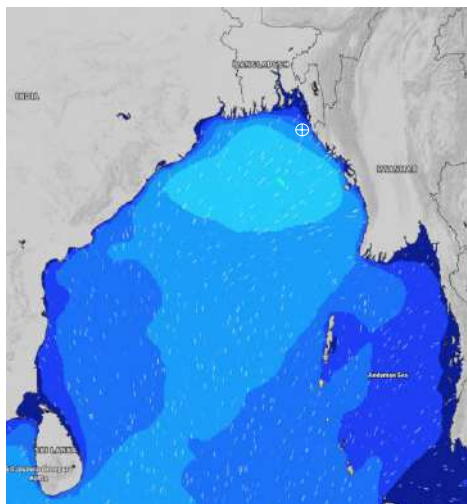
Significant wave height (m)

# MARINE WEATHER FORECAST- 20 NM WEST OF ELEPHANT POINT (Lat 21° 10' N, Long 091° 42' E)

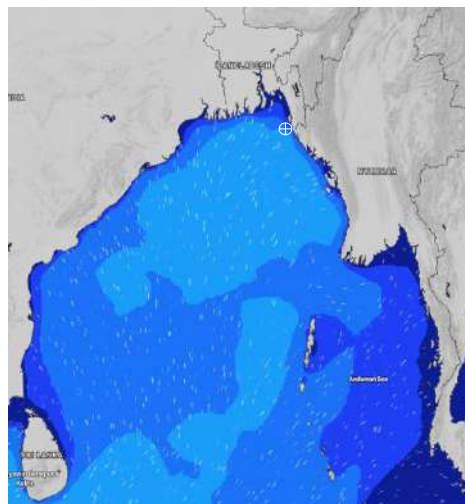
**DATE : 02 to 09 July 2024**

Date	Time	Max Wind Spd (kts)	Wind Direction	Wave Ht (m)	Sea State	Baro Pressure	Air Temp		Sea Surface Temp	Humidity (%)	Prob of Rain (%)	Sea State	Wave Ht (m)		
							Max	Min							
02-07-24	0001	20	SW	2.1	4	1003	28	26	29	93%	40% (0.4 mm)	0	0		
	0600	17	SSW	1.9	4	1001			28	26	28	95%	32% (0.4 mm)	1	0 - 0.1
	1200	13	SSW	1.7	4	1001			27	96%	98% (3.7 mm)	2	0.1 - 0.5		
	1800	15	WSW	1.8	4	1000			28	95%	93% (1.4 mm)	3	0.5 - 1.25		
03-07-24	0001	17	SW	1.9	4	1002	28	26	28	94%	98% (2.3 mm)	4	1.25 - 2.5		
	0600	20	SW	2.0	4	1002			27	95%	98% (2.4 mm)	5	2.5 - 4.0		
	1200	16	SSW	1.7	4	1004			27	94%	92% (2.5 mm)	6	4.0 - 6.0		
	1800	13	S	1.5	4	1004			27	94%	60% (0.6 mm)	7	6.0 - 9.0		
04-07-24	0001	16	SSW	1.5	4	1005	28	26	27	93%	83% (2.3 mm)	8	9.0 - 14.0		
	0600	18	SSW	1.7	4	1005			28	95%	97% (2.4 mm)	9	Over 14.0		
	1200	20	SW	1.8	4	1005			28	91%	95% (2.5 mm)				
	1800	17	SSW	1.8	4	1005			28	92%	90% (2.1 mm)				
05-07-24	0001	19	SSE	1.6	4	1005	28	26	28	93%	83% (2.3 mm)				
	0600	17	S	1.5	4	1004			28	95%	97% (2.4 mm)				
	1200	14	S	1.5	4	1004			28	92%	95% (2.5 mm)				
	1800	12	SSE	1.5	4	1003			28	93%	90% (2.1 mm)				

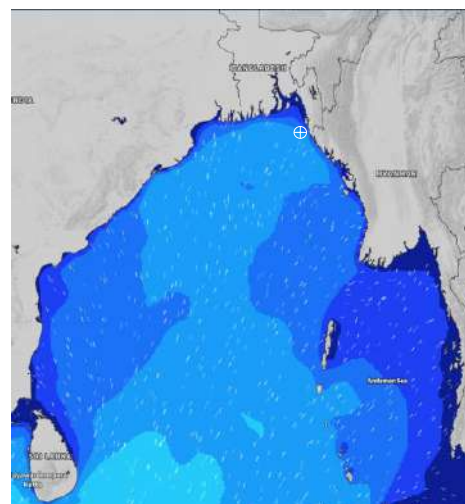
**02 July 24 Tue (Probability 98%)**



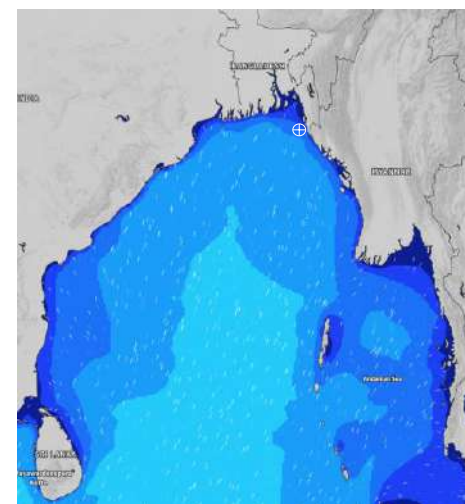
**03 July 24 Wed (Probability 95%)**



**04 July 24 Thu (Probability 90%)**



**05 July 24 Fri (Probability 80%)**



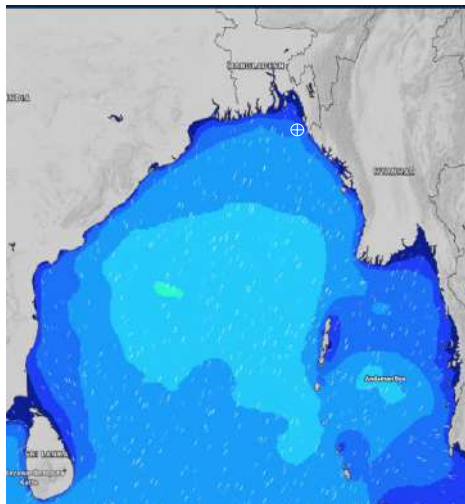
Significant wave height (m)

# MARINE WEATHER FORECAST- 20 NM WEST OF ELEPHANT POINT (Lat 21° 10' N, Long 091° 42' E)

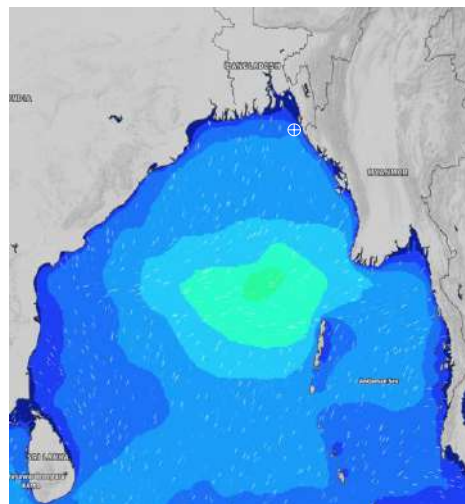
**DATE : 02 to 09 July 2024**

Date	Time	Max Wind Spd (kts)	Wind Direction	Wave Ht (m)	Sea State	Baro Pressure	Air Temp		Sea Surface Temp	Humidity (%)	Prob of Rain (%)	Sea State	Wave Ht (m)
							Max	Min					
06-07-24	0001	19	SSE	1.6	4	1003	28	26	28	92%	80% (1.3 mm)	0	0
	0600	17	SSE	1.6	4	1003			28	94%	90% (1.4 mm)	1	0 - 0.1
	1200	15	SSE	1.6	4	1004			28	96%	77% (0.6 mm)	2	0.1 - 0.5
	1800	12	SSE	1.5	4	1002			28	95%	56% (0.5 mm)	3	0.5 - 1.25
07-07-24	0001	13	SE	1.5	4	1003	30	26	29	93%	56% (0.4 mm)	4	1.25 - 2.5
	0600	16	SE	1.5	4	1002			29	95%	36% (0.3 mm)	5	2.5 - 4.0
	1200	18	SSE	1.6	4	1002			29	97%	61% (0.6 mm)	6	4.0 - 6.0
	1800	15	SSE	1.5	4	1000			29	95%	53% (0.5 mm)	7	6.0 - 9.0
08-07-24	0001	19	SE	1.5	4	1002	30	26	29	95%	61% (0.6 mm)	8	9.0 - 14.0
	0600	25	ESE	1.9	4	1001			28	96%	53% (0.5 mm)	9	Over 14.0
	1200	30	SE	2.1	4	1001			29	94%	56% (0.4 mm)		
	1800	28	SE	2.2	4	1001			28	94%	36% (0.3 mm)		
09-07-24	0001	27	SE	2.3	4	1003	29	26	28	90%	61% (0.6 mm)		
	0600	25	SE	2.1	4	1003			28	93%	53% (0.5 mm)		
	1200	25	SSE	2.2	4	1005			28	90%	56% (0.4 mm)		
	1800	26	SE	2.3	4	1005			28	91%	36% (0.3 mm)		

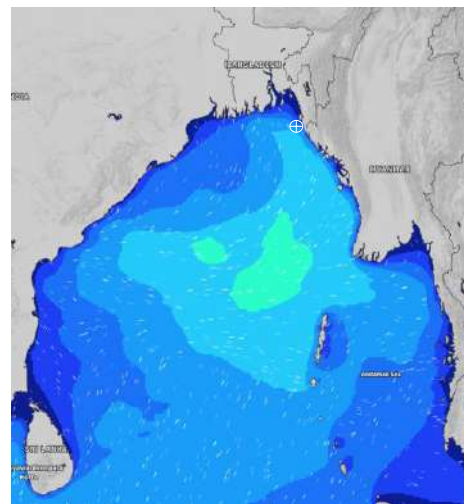
**06 July 24 Sat (Probability 70%)**



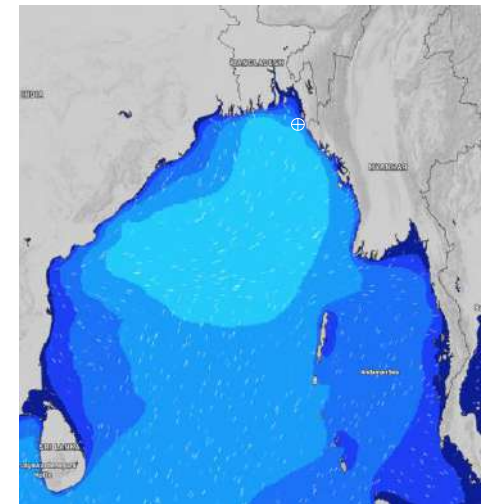
**07 July 24 Sun (Probability 60%)**



**08 July 24 Mon (Probability 50%)**



**09 July 24 Tue (Probability 50%)**



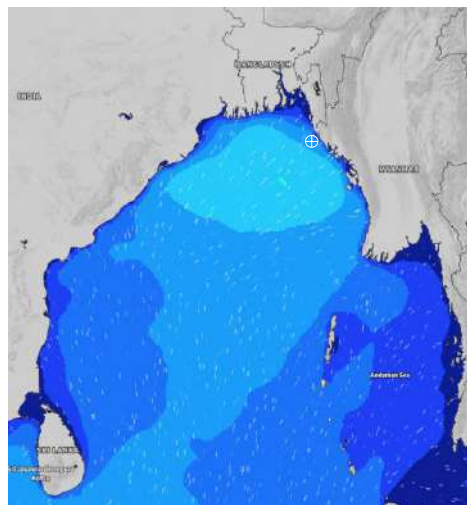
Significant wave height (m)

# MARINE WEATHER FORECAST- 15 NM WEST OF ST. MARTIN'S LIGHT HOUSE (Lat 20° 37'N, Long 092° 03'E)

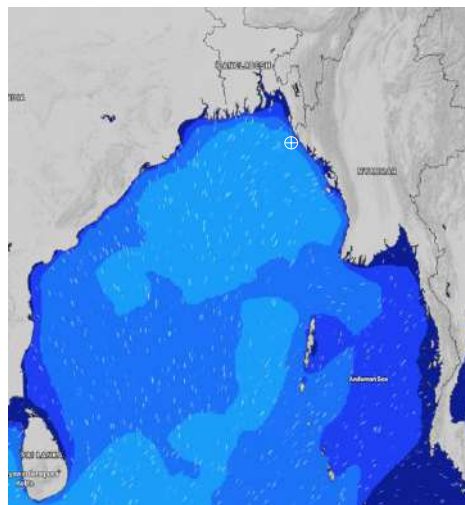
**DATE : 02 to 09 July 2024**

Date	Time	Max Wind Spd (kts)	Wind Direction	Wave Ht (m)	Sea State	Baro Pressure	Air Temp		Sea Surface Temp	Humidity (%)	Prob of Rain(%)	Sea State	Wave Ht (m)
							Max	Min					
02-07-24	0001	23	SW	2.7	5	1004	28	26	29	94%	89% (3.5 mm)	0	0
	0600	18	SW	2.5	4	1001			29	94%	94% (6.1 mm)	1	0 - 0.1
	1200	15	SW	2.3	4	1002			28	95%	81% (1.3 mm)	2	0.1 - 0.5
	1800	19	W	2.5	4	1001			28	95%	83% (5.4 mm)	3	0.5 - 1.25
03-07-24	0001	21	WSW	2.6	5	1003	28	26	27	94%	90% (2.1 mm)	4	1.25 - 2.5
	0600	21	WSW	2.4	4	1002			27	94%	83% (2.3 mm)	5	2.5 - 4.0
	1200	19	SSW	2.1	4	1005			27	94%	97% (2.4 mm)	6	4.0 - 6.0
	1800	13	SSW	1.9	4	1004			27	94%	61% (0.6 mm)	7	6.0 - 9.0
04-07-24	0001	14	SSW	1.8	4	1007	28	26	28	92%	90% (2.1 mm)	8	9.0 - 14.0
	0600	16	SSW	2.0	4	1005			27	94%	83% (1.3 mm)	9	Over 14.0
	1200	20	SW	2.2	4	1007			28	93%	97% (1.4 mm)		
	1800	18	SSW	2.0	4	1005			27	93%	61% (0.6 mm)		
05-07-24	0001	15	S	1.7	4	1006	28	26	28	92%	90% (2.1 mm)		
	0600	17	SSW	1.8	4	1004			28	94%	83% (1.3 mm)		
	1200	15	SSW	1.8	4	1005			28	93%	97% (1.4 mm)		
	1800	11	SSW	1.9	4	1003			28	93%	61% (0.6 mm)		

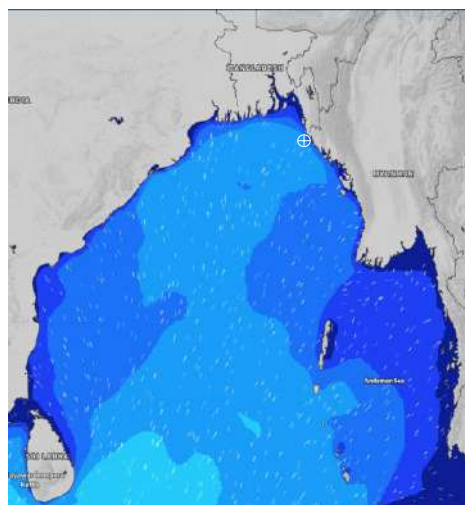
**02 July 24 Tue (Probability 98%)**



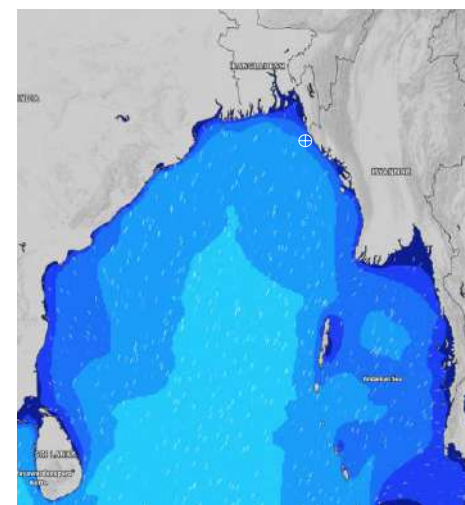
**03 July 24 Wed (Probability 95%)**



**04 July 24 Thu (Probability 90%)**



**05 July 24 Fri (Probability 80%)**



Significant wave height (m)

# MARINE WEATHER FORECAST- 15 NM WEST OF ST. MARTIN'S LIGHT HOUSE (Lat 20° 37'N, Long 092° 03'E)

**DATE : 02 to 09 July 2024**

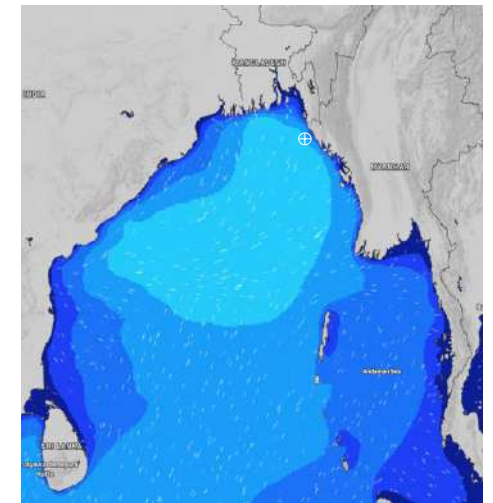
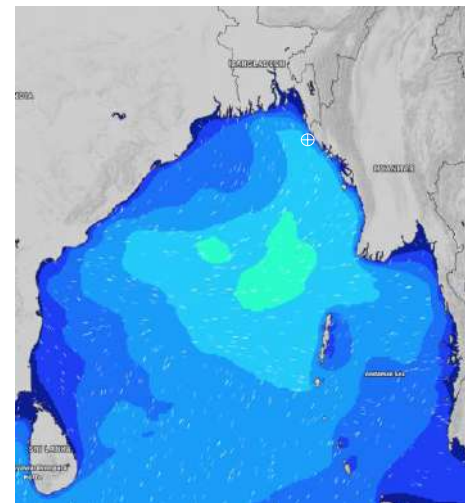
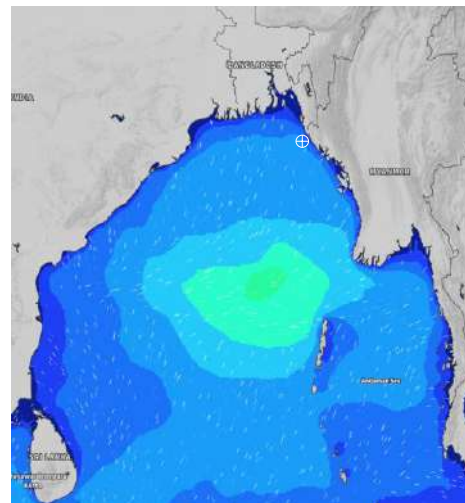
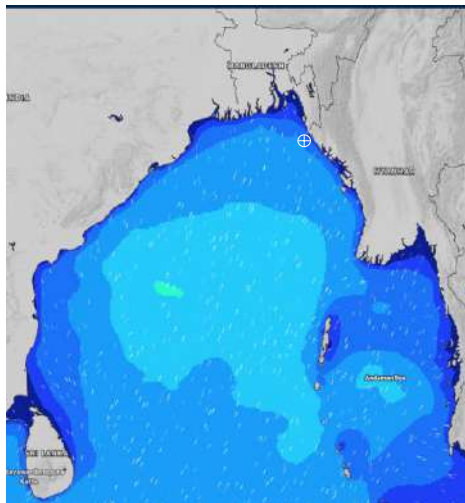
Date	Time	Max Wind Spd (kts)	Wind Direction	Wave Ht (m)	Sea State	Baro Pressure	Air Temp		Sea Surface Temp	Humidity (%)	Prob of Rain (%)	Sea State	Wave Ht (m)
							Max	Min					
06-07-24	0001	12	SSE	1.8	4	1005	28	26	28	91%	78% (1.4 mm)	0	0
	0600	11	SSE	1.9	4	1003			28	92%	81% (1.5 mm)	1	0 - 0.1
	1200	11	SE	1.8	4	1005			28	93%	69% (1.1 mm)	2	0.1 - 0.5
	1800	10	SSE	1.8	4	1002			29	92%	70% (1.4 mm)	3	0.5 - 1.25
07-07-24	0001	10	SSE	1.8	4	1004	29	26	29	91%	81% (1.5 mm)	4	1.25 - 2.5
	0600	11	SE	1.9	4	1001			28	91%	75% (1.1 mm)	5	2.5 - 4.0
	1200	18	SE	1.9	4	1003			28	95%	66% (1.3 mm)	6	4.0 - 6.0
	1800	17	SSE	1.9	4	1000			29	94%	69% (1.4 mm)	7	6.0 - 9.0
08-07-24	0001	21	SE	2.1	4	1002	30	26	29	94%	70% (0.8 mm)	8	9.0 - 14.0
	0600	23	SE	2.4	4	1000			28	94%	71% (0.7 mm)	9	Over 14.0
	1200	29	SE	2.6	5	1002			28	95%	45% (0.4 mm)		
	1800	26	SSE	2.6	5	1000			29	95%	32% (0.2 mm)		
09-07-24	0001	22	SSE	2.6	5	1004	29	26	28	94%	69% (0.8 mm)		
	0600	20	SSE	2.4	4	1002			28	94%	71% (0.7 mm)		
	1200	22	SSE	2.5	4	1005			28	95%	45% (0.4 mm)		
	1800	24	SSE	2.7	5	1004			28	95%	32% (0.2 mm)		

**06 July 24 Sat (Probability 70%)**

**07 July 24 Sun (Probability 60%)**

**08 July 24 Mon (Probability 50%)**

**09 July 24 Tue (Probability 50%)**



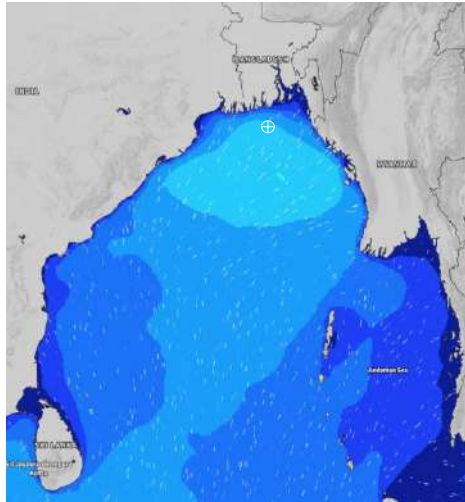
Significant wave height (m)

# MARINE WEATHER FORECAST- 40 NM ESE OF PAYRA FAIRWAY (Lat 21° 07' N, Long 090° 45' E)

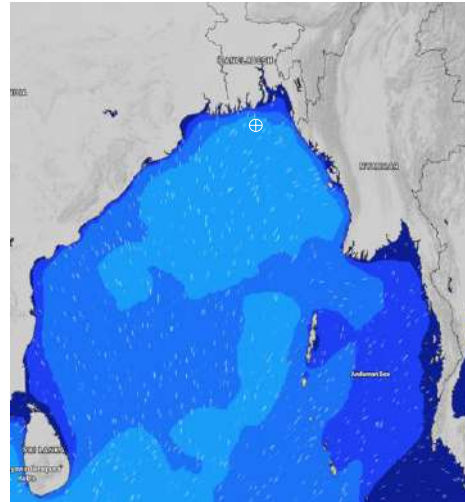
**DATE : 02 to 09 July 2024**

Date	Time	Max Wind Spd (kts)	Wind Direction	Wave Ht (m)	Sea State	Baro Pressure	Air Temp		Sea Surface Temp	Humidity (%)	Prob of Rain (%)	Sea State	Wave Ht (m)
							Max	Min					
02-07-24	0001	24	SW	2.7	5	1002	29	27	29	91%	34% (0.2 mm)	0	0
	0600	18	SW	2.5	4	1000			29	91%	32% (0.4 mm)	1	0 - 0.1
	1200	21	WSW	2.4	4	1001			29	90%	98% (7.7 mm)	2	0.1 - 0.5
	1800	22	WSW	2.8	5	1000			29	90%	51% (0.4 mm)	3	0.5 - 1.25
03-07-24	0001	22	SW	2.5	4	1001	29	27	29	90%	69% (0.8 mm)	4	1.25 - 2.5
	0600	21	SW	2.5	4	1002			28	91%	70% (0.9 mm)	5	2.5 - 4.0
	1200	15	SSW	2.0	4	1003			27	92%	93% (2.8 mm)	6	4.0 - 6.0
	1800	14	SSW	1.8	4	1003			28	91%	39% (0.4 mm)	7	6.0 - 9.0
04-07-24	0001	21	SW	2.1	4	1005	29	27	28	91%	72% (0.7 mm)	8	9.0 - 14.0
	0600	23	SW	2.3	4	1004			28	92%	80% (1.1 mm)	9	Over 14.0
	1200	21	SW	2.3	4	1005			28	90%	71% (0.8 mm)		
	1800	17	SSW	2.1	4	1004			28	91%	37% (0.4 mm)		
05-07-24	0001	16	SSW	1.8	4	1004	29	27	28	90%	68% (0.9 mm)		
	0600	18	SSW	1.8	4	1003			29	92%	86% (1.1 mm)		
	1200	19	SSW	2.0	4	1003			29	89%	75% (0.8 mm)		
	1800	12	SW	2.1	4	1002			28	89%	53% (0.4 mm)		

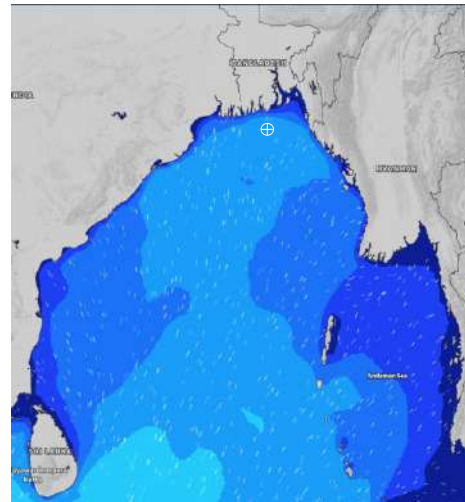
**02 July 24 Tue (Probability 98%)**



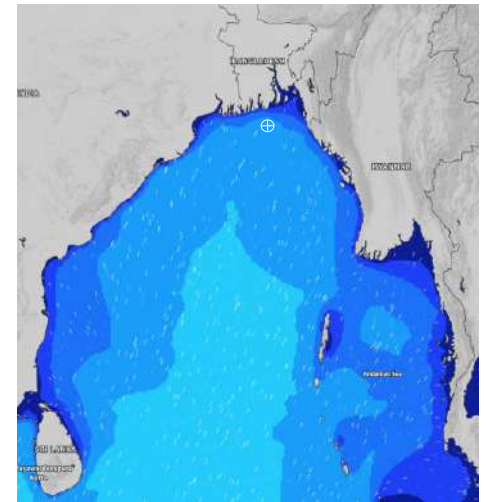
**03 July 24 Wed (Probability 95%)**



**04 July 24 Thu (Probability 90%)**



**05 July 24 Fri (Probability 80%)**



Significant wave height (m)

# MARINE WEATHER FORECAST- 40 NM ESE OF PAYRA FAIRWAY (Lat 21° 07' N, Long 090° 45' E)

**DATE : 02 to 09 July 2024**

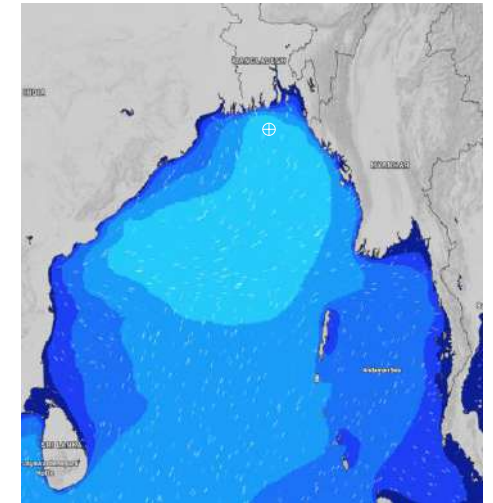
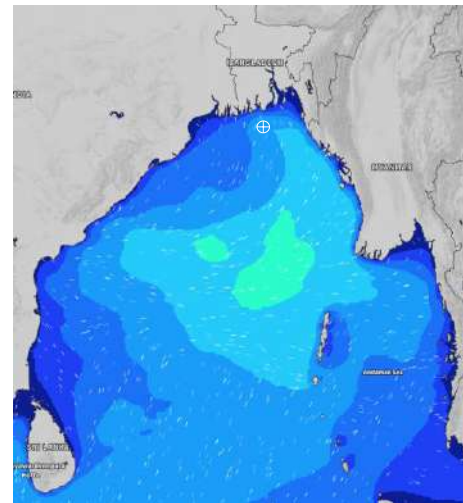
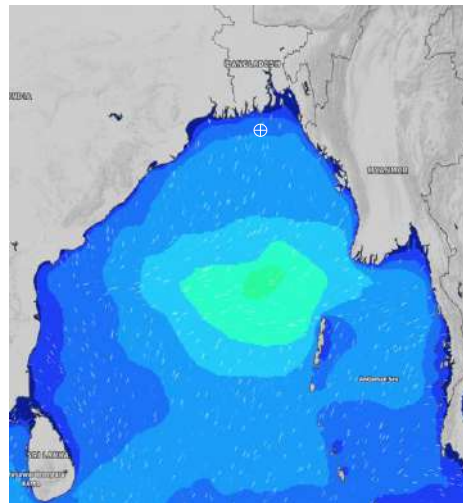
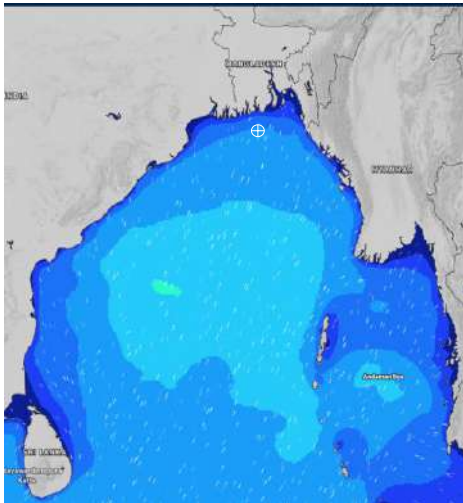
Date	Time	Max Wind Spd (kts)	Wind Direction	Wave Ht (m)	Sea Stae	Baro Pressure	Air Temp		Sea Surface Temp	Humidity (%)	Prob of Rain (%)	Sea State	Wave Ht (m)
							Max	Min					
06-07-24	0001	12	SSW	2.0	4	1003	29	27	28	91%	83% (1.3 mm)	0	0
	0600	11	S	1.9	4	1002			28	92%	97% (1.4 mm)	1	0 - 0.1
	1200	10	S	1.9	4	1003			29	93%	61% (0.6 mm)	2	0.1 - 0.5
	1800	9	S	1.8	4	1002			29	90%	90% (2.1 mm)	3	0.5 - 1.25
07-07-24	0001	10	SSE	1.8	4	1002	30	27	29	90%	97% (2.4 mm)	4	1.25 - 2.5
	0600	10	SE	1.9	4	1002			29	92%	95% (3.5 mm)	5	2.5 - 4.0
	1200	12	SE	1.8	4	1002			29	91%	43% (0.4 mm)	6	4.0 - 6.0
	1800	11	SSE	1.8	4	1000			29	90%	24% (0.1 mm)	7	6.0 - 9.0
08-07-24	0001	13	ESE	1.9	4	1001	30	27	29	90%	61% (0.6 mm)	8	9.0 - 14.0
	0600	21	ESE	2.0	4	1000			29	92%	44% (0.4 mm)	9	Over 14.0
	1200	26	SE	2.4	4	1000			29	91%	43% (0.4 mm)		
	1800	26	SE	2.5	4	1000			29	90%	24% (0.1 mm)		
09-07-24	0001	25	SSE	2.6	5	1002	30	27	29	88%	61% (0.6 mm)		
	0600	25	SSE	2.7	5	1001			29	92%	44% (0.4 mm)		
	1200	26	SSE	2.8	5	1003			29	91%	43% (0.4 mm)		
	1800	25	SSE	2.8	5	1004			28	90%	24% (0.1 mm)		

**06 July 24 Sat (Probability 70%)**

**07 July 24 Sun (Probability 60%)**

**08 July 24 Mon (Probability 50%)**

**09 July 24 Tue (Probability 50%)**



Significant wave height (m)

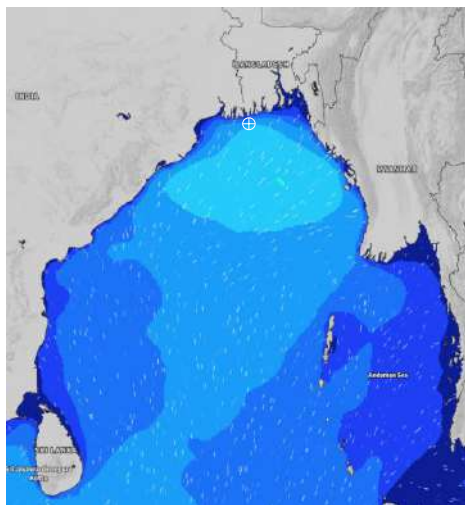


# MARINE WEATHER FORECAST- 10 NM SOUTH OF MONGLA FAIRWAY (Lat 21° 16' N, Long 089° 34' E)

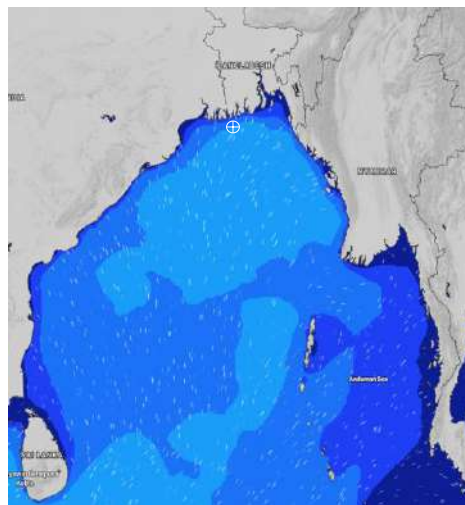
**DATE : 02 to 09 July 2024**

Date	Time	Max Wind Spd (kts)	Wind Direction	Wave Ht (m)	Sea State	Baro Pressure	Air Temp		Sea Surface Temp	Humidity (%)	Prob of Rain (%)	Sea State	Wave Ht (m)
							Max	Min					
02-07-24	0001	22	SW	2.6	5	1001	29	27	29	94%	24% (0.1 mm)	0	0
	0600	21	WSW	2.3	4	1000			29	92%	31% (0.2 mm)	1	0 - 0.1
	1200	25	WSW	2.6	5	1001			29	91%	71% (0.7 mm)	2	0.1 - 0.5
	1800	22	SW	2.5	4	999			29	93%	57% (0.4 mm)	3	0.5 - 1.25
03-07-24	0001	24	SW	2.5	4	1001	29	27	29	93%	57% (0.4 mm)	4	1.25 - 2.5
	0600	21	SW	2.4	4	1000			29	94%	53% (0.6 mm)	5	2.5 - 4.0
	1200	19	SW	2.0	4	1002			29	94%	84% (2.7 mm)	6	4.0 - 6.0
	1800	18	SSW	2.0	4	1002			29	94%	35% (0.3 mm)	7	6.0 - 9.0
04-07-24	0001	22	SW	2.1	4	1004	30	27	29	94%	65% (0.7 mm)	8	9.0 - 14.0
	0600	20	SW	2.3	4	1003			28	96%	85% (2.4 mm)	9	Over 14.0
	1200	21	SW	2.2	4	1004			28	90%	93% (2.5 mm)		
	1800	17	SSW	2.0	4	1003			29	93%	24% (0.1 mm)		
05-07-24	0001	19	SSW	1.8	4	1003	29	27	29	94%	57% (0.4 mm)		
	0600	20	SSW	1.8	4	1002			29	96%	68% (0.8 mm)		
	1200	17	SW	1.9	4	1002			28	90%	95% (2.5 mm)		
	1800	9	SW	1.9	4	1001			29	92%	31% (0.2 mm)		

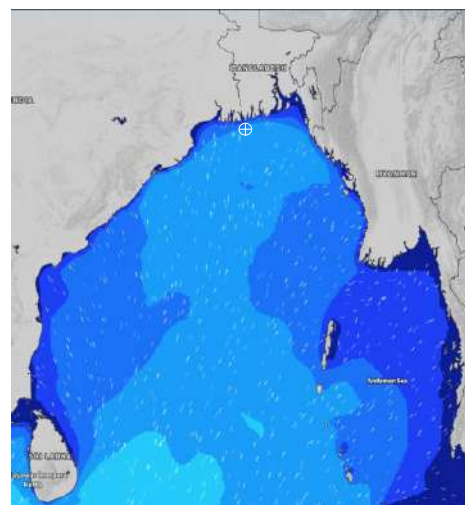
**02 July 24 Tue (Probability 98%)**



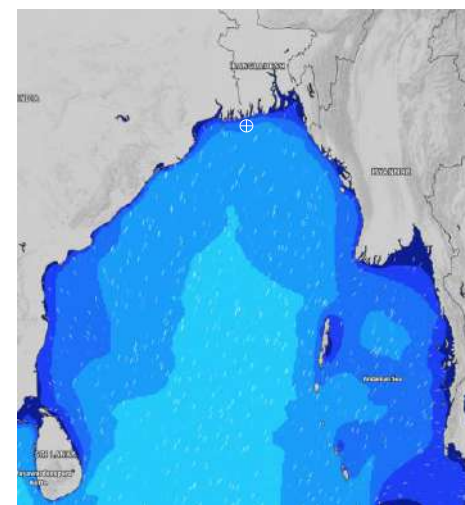
**03 July 24 Wed (Probability 95%)**



**04 July 24 Thu (Probability 90%)**



**05 July 24 Fri (Probability 80%)**



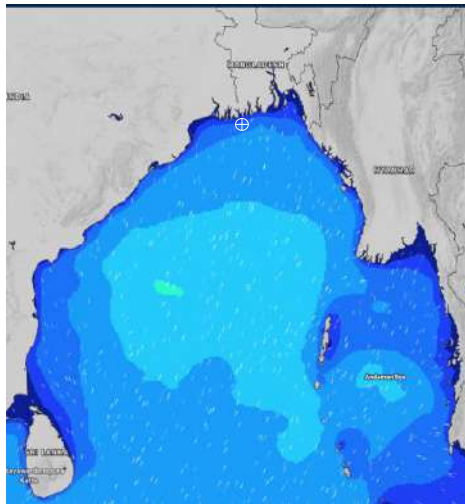
Significant wave height (m)

# MARINE WEATHER FORECAST- 10 NM SOUTH OF MONGLA FAIRWAY (Lat 21° 16' N, Long 089° 34' E)

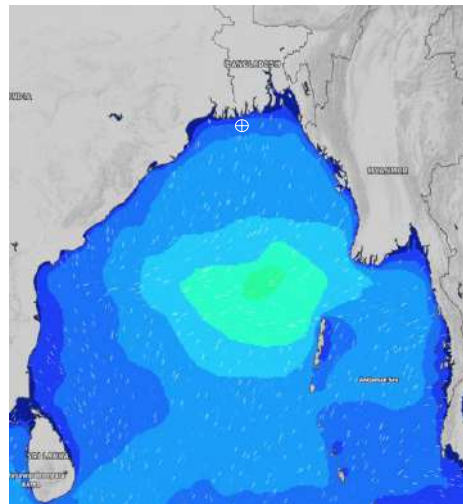
**DATE : 02 to 09 July 2024**

Date	Time	Max Wind Spd (kts)	Wind Direction	Wave Ht (m)	Sea State	Baro Pressure	Air Temp		Sea Surface Temp	Humidity (%)	Prob of Rain (%)	Sea State	Wave Ht (m)
							Max	Min					
06-07-24	0001	14	S	1.8	4	1002	30	27	29	90%	68% (0.7 mm)	0	0
	0600	15	WSW	1.9	4	1001			28	92%	61% (0.6 mm)	1	0 - 0.1
	1200	9	NNW	1.8	4	1003			27	93%	61% (0.5 mm)	2	0.1 - 0.5
	1800	7	SE	1.7	4	1002			28	92%	70% (0.7 mm)	3	0.5 - 1.25
07-07-24	0001	5	S	1.7	4	1002	30	27	29	93%	77% (1.1 mm)	4	1.25 - 2.5
	0600	5	SSW	1.7	4	1001			29	94%	68% (0.5 mm)	5	2.5 - 4.0
	1200	6	E	1.7	4	1002			29	93%	61% (0.4 mm)	6	4.0 - 6.0
	1800	10	SE	1.7	4	1000			29	94%	61% (0.5 mm)	7	6.0 - 9.0
08-07-24	0001	11	SE	1.8	4	1001	31	27	29	94%	71% (0.6 mm)	8	9.0 - 14.0
	0600	12	E	1.6	4	1000			29	95%	44% (0.4 mm)	9	Over 14.0
	1200	22	ESE	1.8	4	1000			29	90%	63% (0.5 mm)		
	1800	22	SE	2.1	4	998			29	94%	61% (0.7 mm)		
09-07-24	0001	25	SSE	2.2	4	1000	31	27	29	90%	61% (0.6 mm)		
	0600	24	SSE	2.7	5	1000			29	92%	44% (0.4 mm)		
	1200	26	SSE	2.7	5	1002			29	88%	63% (0.5 mm)		
	1800	24	SSE	2.7	5	1002			29	88%	61% (0.7 mm)		

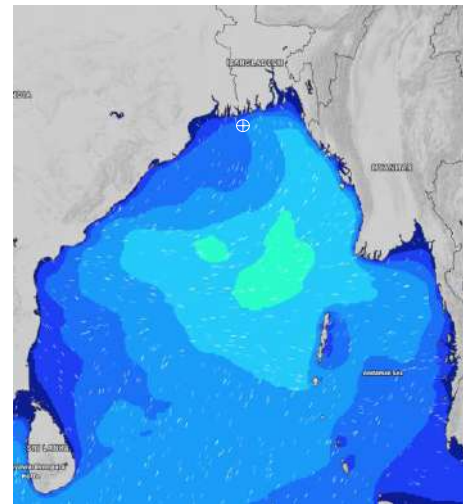
**06 July 24 Sat (Probability 70%)**



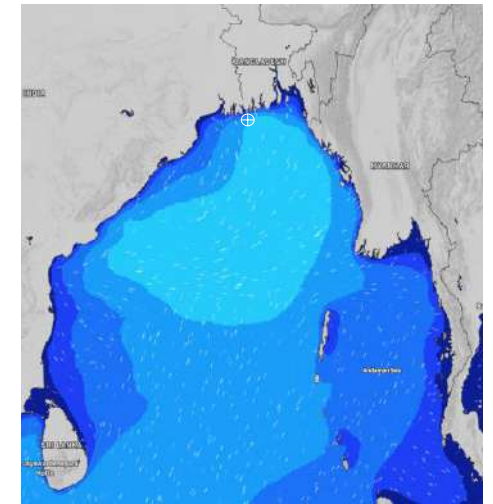
**07 July 24 Sun (Probability 60%)**



**08 July 24 Mon (Probability 50%)**



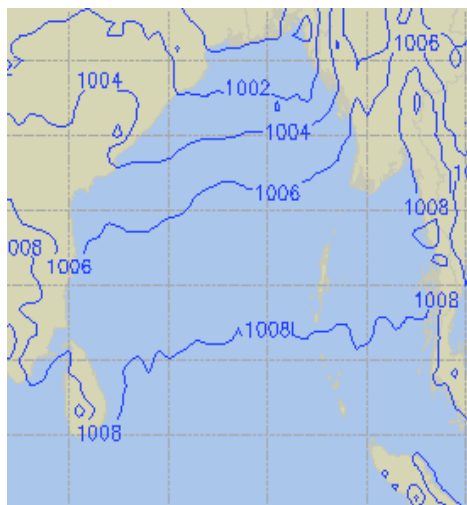
**09 July 24 Tue (Probability 50%)**



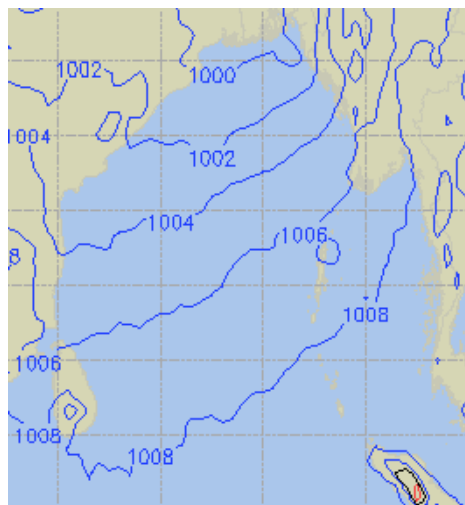
Significant wave height (m)

## PREDICTED SURFACE PRESSURE FORECAST (02 to 08 July 2024)

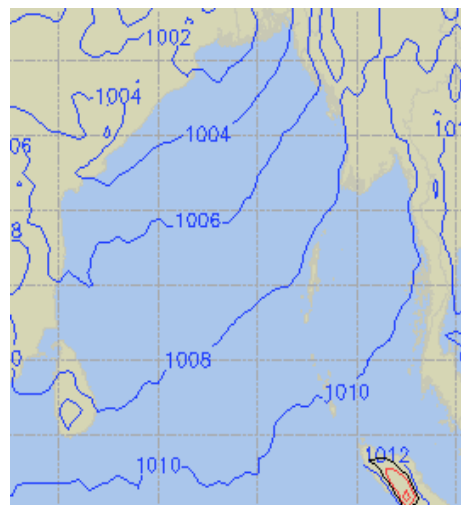
**02 July 24 Tue (Probability 98%)**



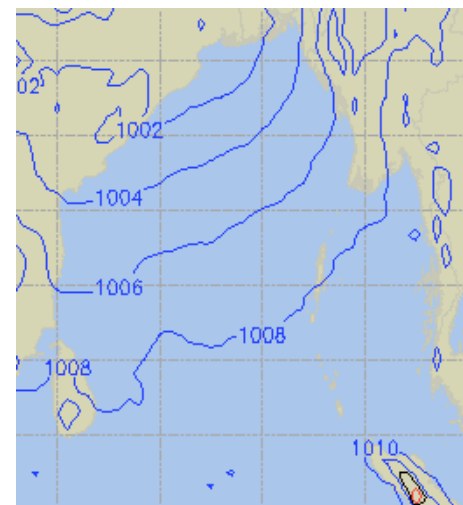
**03 July 24 Wed (Probability 95%)**



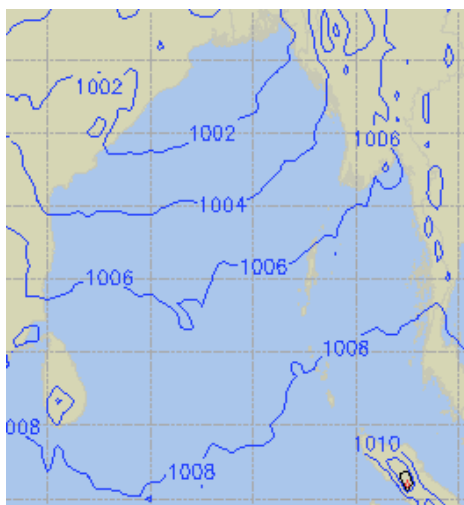
**04 July 24 Thu (Probability 90%)**



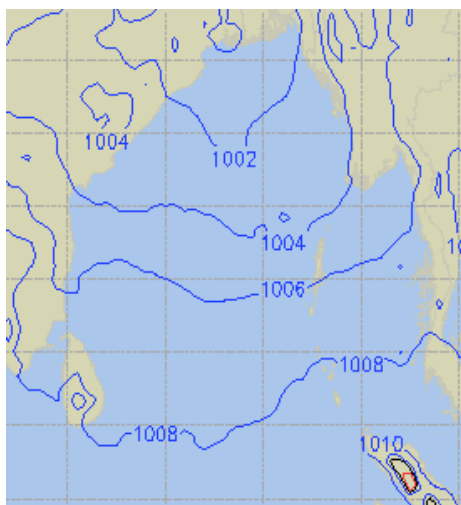
**05 July 24 Fri (Probability 80%)**



**06 July 24 Sat (Probability 70%)**



**07 July 24 Sun (Probability 60%)**



**08 July 24 Mon (Probability 50%)**

