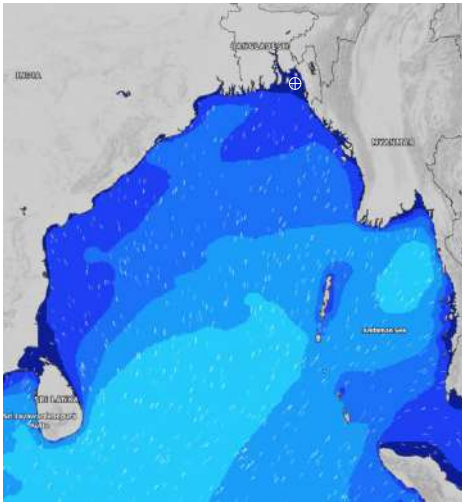


**MARINE WEATHER FORECAST- NEAR AUTHORITY BUOY (Lat 22° 12' N, Long 091° 38' E)**

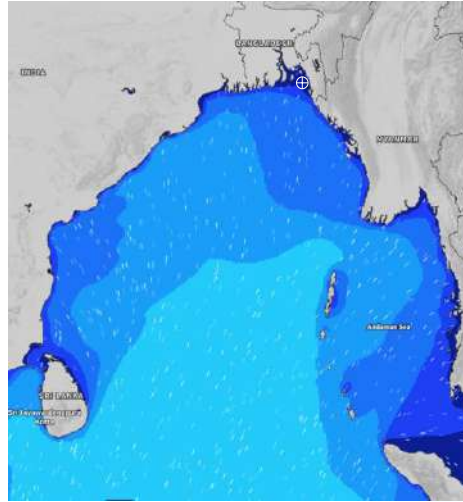
**DATE : 02 to 09 June 2024**

Date	Time	Max Wind Spd (kts)	Wind Direction	Wave Ht (m)	Sea State	Baro Pressure	Air Temp		Sea Surface Temp	Humidity (%)	Prb of Rain (%)	Sea State	Wave Ht (m)
							Max	Min					
02-06-24	0001	11	SSW	0.2	2	1007	34	27	30	92%	15% (0.0 mm)	0	0
	0600	8	SE	0.2	2	1006			29	94%	17% (0.0 mm)	1	0 - 0.1
	1200	10	SW	0.2	2	1007			30	82%	20% (0.0 mm)	2	0.1 - 0.5
	1800	12	SW	0.2	2	1005			29	86%	16% (0.0 mm)	3	0.5 - 1.25
03-06-24	0001	14	SSW	0.3	2	1007	34	27	30	88%	15% (0.0 mm)	4	1.25 - 2.5
	0600	12	SSE	0.2	2	1006			29	94%	17% (0.0 mm)	5	2.5 - 4.0
	1200	12	SSW	0.3	2	1006			30	82%	20% (0.0 mm)	6	4.0 - 6.0
	1800	16	SSW	0.3	2	1004			29	86%	15% (0.0 mm)	7	6.0 - 9.0
04-06-24	0001	17	SSE	0.3	2	1005	34	27	30	83%	16% (0.0 mm)	8	9.0 - 14.0
	0600	16	SE	0.3	2	1006			29	92%	18% (0.0 mm)	9	Over 14.0
	1200	17	SSW	0.4	2	1005			30	86%	23% (0.0 mm)		
	1800	19	S	0.4	2	1004			29	84%	16% (0.0 mm)		
05-06-24	0001	22	SSE	0.4	2	1004	34	27	30	88%	18% (0.0 mm)		
	0600	15	SE	0.3	2	1006			29	94%	14% (0.0 mm)		
	1200	17	SSE	0.4	2	1005			30	83%	28% (0.0 mm)		
	1800	15	SSW	0.4	2	1003			29	85%	19% (0.0 mm)		

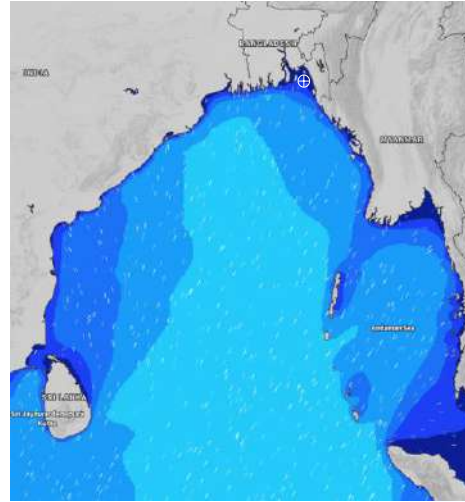
**02 June 24 Sun (Probability 98%)**



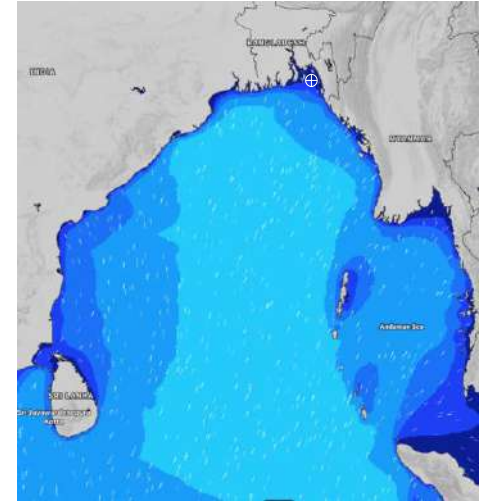
**03 June 24 Mon (Probability 95%)**



**04 June 24 Tue (Probability 90%)**



**05 June 24 Wed (Probability 80%)**



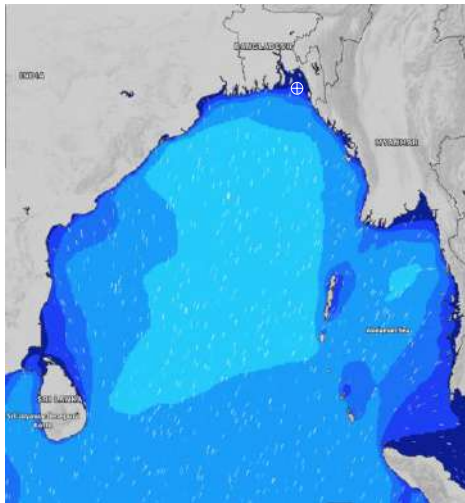
Significant wave height (m)

**MARINE WEATHER FORECAST- NEAR AUTHORITY BUOY (Lat 22° 12' N, Long 091° 38' E)**

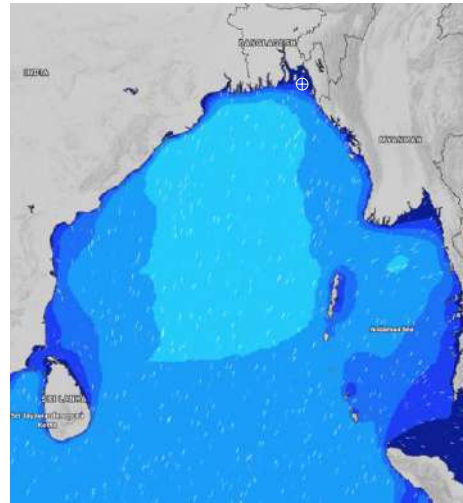
**DATE : 02 to 09 June 2024**

Date	Time	Max Wind Spd (kts)	Wind Direction	Wave Ht (m)	Sea State	Baro Pressure	Air Temp		Sea Surface Temp	Humidity (%)	Prob of Rain (%)	Sea State	Wave Ht (m)
							Max	Min					
06-06-24	0001	18	SSE	0.3	2	1006	34	27	29	88%	19% (0.0 mm)	0	0
	0600	17	SE	0.3	2	1006			29	93%	20% (0.0 mm)	1	0 - 0.1
	1200	17	SSW	0.4	2	1007			30	75%	15% (0.0 mm)	2	0.1 - 0.5
	1800	16	SSW	0.3	2	1004			29	86%	12% (0.0 mm)	3	0.5 - 1.25
07-06-24	0001	18	SSE	0.3	2	1005	34	27	29	87%	16% (0.0 mm)	4	1.25 - 2.5
	0600	13	SSE	0.3	2	1005			29	91%	15% (0.0 mm)	5	2.5 - 4.0
	1200	15	SSW	0.4	2	1006			30	76%	21% (0.0 mm)	6	4.0 - 6.0
	1800	18	S	0.4	2	1003			29	87%	20% (0.0 mm)	7	6.0 - 9.0
08-06-24	0001	20	SSE	0.4	2	1005	33	27	29	88%	16% (0.0 mm)	8	9.0 - 14.0
	0600	20	SSE	0.4	2	1003			29	92%	18% (0.0 mm)	9	Over 14.0
	1200	16	S	0.3	2	1003			30	76%	17% (0.0 mm)		
	1800	19	S	0.4	2	1002			29	88%	12% (0.0 mm)		
09-06-24	0001	22	SSE	0.4	2	1003	33	27	29	86%	15% (0.0 mm)		
	0600	23	SSE	0.4	2	1002			29	93%	16% (0.0 mm)		
	1200	18	SSE	0.4	2	1003			30	75%	18% (0.0 mm)		
	1800	20	SSE	0.4	2	1001			29	89%	16% (0.0 mm)		

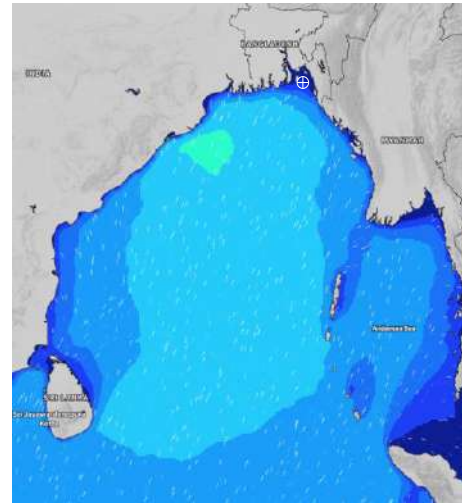
**06 June 24 Thu (Probability 70%)**



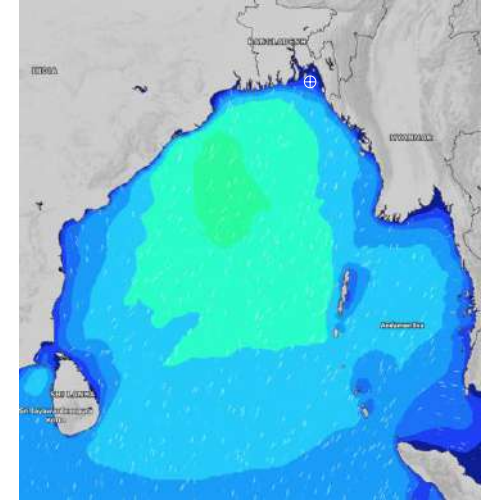
**07 June 24 Fri (Probability 60%)**



**08 June 24 Sat (Probability 50%)**



**09 June 24 Sun (Probability 50%)**



Significant wave height (m)



# MARINE WEATHER FORECAST- 20 NM WEST OF ELEPHANT POINT (Lat 21° 10' N, Long 091° 42' E)

**DATE : 02 to 09 June 2024**

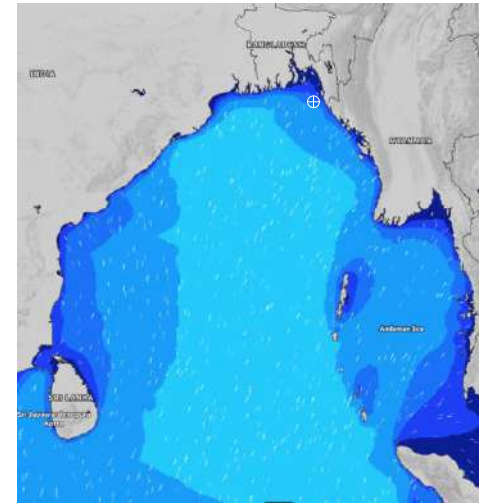
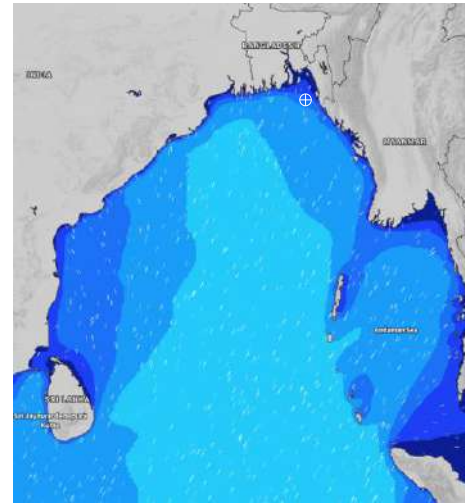
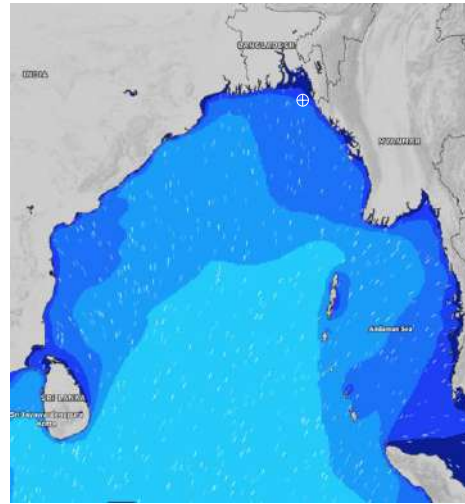
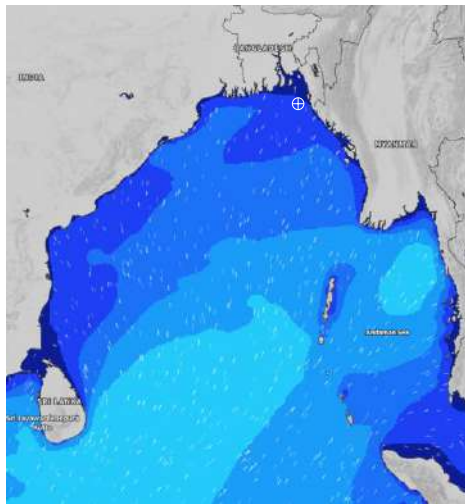
Date	Time	Max Wind Spd (kts)	Wind Direction	Wave Ht (m)	Sea State	Baro Pressure	Air Temp		Sea Surface Temp	Humidity (%)	Prob of Rain (%)	Sea State	Wave Ht (m)
							Max	Min					
02-06-24	0001	11	SW	0.9	3	1007	34	27	30	88%	15% (0.0 mm)	0	0
	0600	6	SSE	0.9	3	1007			29	92%	14% (0.0 mm)	1	0 - 0.1
	1200	8	SSW	0.9	3	1006			30	84%	16% (0.0 mm)	2	0.1 - 0.5
	1800	12	SW	0.9	3	1005			30	87%	17% (0.0 mm)	3	0.5 - 1.25
03-06-24	0001	13	SW	1.0	3	1007	34	27	30	86%	18% (0.0 mm)	4	1.25 - 2.5
	0600	6	S	1.1	3	1006			29	91%	19% (0.0 mm)	5	2.5 - 4.0
	1200	8	S	1.2	3	1007			30	85%	15% (0.0 mm)	6	4.0 - 6.0
	1800	12	SSW	1.3	4	1004			30	88%	16% (0.0 mm)	7	6.0 - 9.0
04-06-24	0001	14	SSW	1.4	4	1006	34	27	30	88%	18% (0.0 mm)	8	9.0 - 14.0
	0600	10	S	1.4	4	1005			29	91%	17% (0.0 mm)	9	Over 14.0
	1200	15	SSE	1.5	4	1006			30	83%	19% (0.0 mm)		
	1800	16	SSE	1.6	4	1004			30	87%	16% (0.0 mm)		
05-06-24	0001	17	SSE	1.6	4	1005	34	27	30	86%	18% (0.0 mm)		
	0600	11	S	1.6	4	1006			29	94%	17% (0.0 mm)		
	1200	10	SSW	1.6	4	1004			30	85%	15% (0.0 mm)		
	1800	12	SSE	1.6	4	1004			30	87%	18% (0.0 mm)		

**02 June 24 Sun (Probability 98%)**

**03 June 24 Mon (Probability 95%)**

**04 June 24 Tue (Probability 90%)**

**05 June 24 Wed (Probability 80%)**



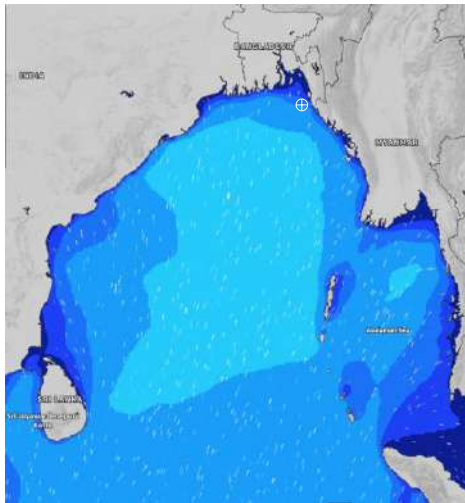
Significant wave height (m)

# MARINE WEATHER FORECAST- 20 NM WEST OF ELEPHANT POINT (Lat 21° 10' N, Long 091° 42' E)

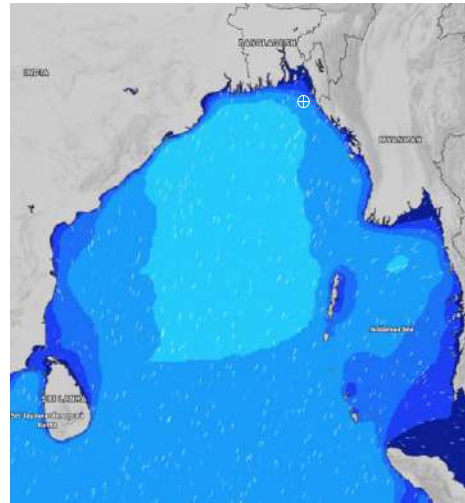
**DATE : 02 to 09 June 2024**

Date	Time	Max Wind Spd (kts)	Wind Direction	Wave Ht (m)	Sea State	Baro Pressure	Air Temp		Sea Surface Temp	Humidity (%)	Prob of Rain (%)	Sea State	Wave Ht (m)
							Max	Min					
06-06-24	0001	13	S	1.6	4	1006	34	27	29	88%	21% (0.0 mm)	0	0
	0600	13	SSE	1.7	4	1006			29	91%	20% (0.0 mm)	1	0 - 0.1
	1200	14	SSE	1.7	4	1007			30	72%	16% (0.0 mm)	2	0.1 - 0.5
	1800	15	SSW	1.6	4	1004			30	86%	18% (0.0 mm)	3	0.5 - 1.25
07-06-24	0001	14	SSW	1.6	4	1005	34	28	29	89%	15% (0.0 mm)	4	1.25 - 2.5
	0600	15	SSW	1.8	4	1006			29	93%	14% (0.0 mm)	5	2.5 - 4.0
	1200	16	SSE	1.8	4	1005			30	77%	12% (0.0 mm)	6	4.0 - 6.0
	1800	16	SSE	1.7	4	1004			30	85%	16% (0.0 mm)	7	6.0 - 9.0
08-06-24	0001	15	S	1.7	4	1005	34	28	29	91%	15% (0.0 mm)	8	9.0 - 14.0
	0600	12	SSW	1.7	4	1004			29	93%	18% (0.0 mm)	9	Over 14.0
	1200	13	S	1.8	4	1005			30	78%	17% (0.0 mm)		
	1800	14	SSE	1.8	4	1003			29	85%	14% (0.0 mm)		
09-06-24	0001	20	SSE	1.8	4	1002	34	28	29	91%	15% (0.0 mm)		
	0600	18	SSW	1.8	4	1003			29	96%	16% (0.0 mm)		
	1200	21	SW	1.9	4	1002			30	78%	13% (0.0 mm)		
	1800	22	SSE	1.9	4	1001			29	86%	15% (0.0 mm)		

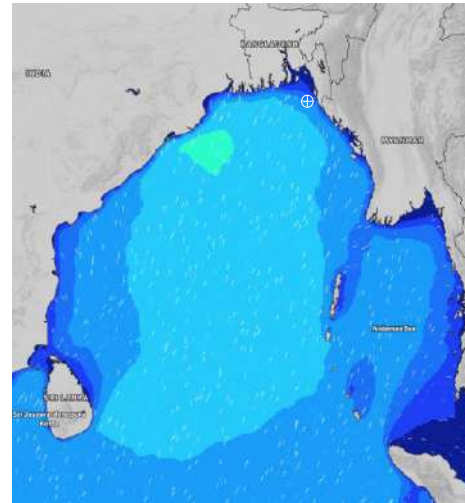
**06 June 24 Thu (Probability 70%)**



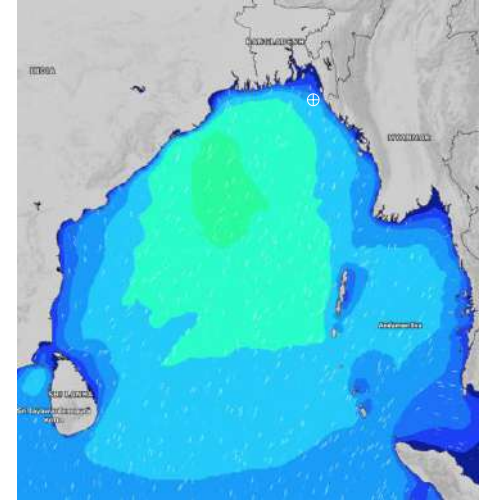
**07 June 24 Fri (Probability 60%)**



**08 June 24 Sat (Probability 50%)**



**09 June 24 Sun (Probability 50%)**



Significant wave height (m)

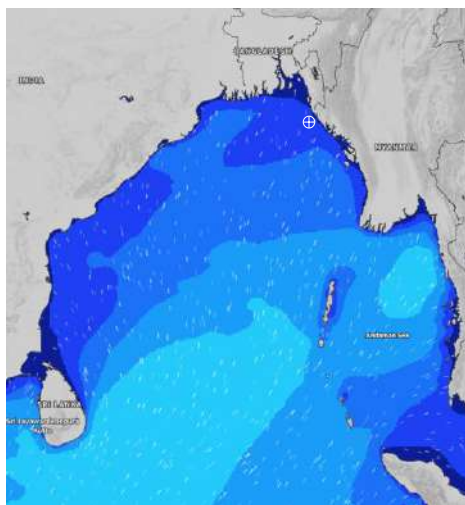


# MARINE WEATHER FORECAST- 15 NM WEST OF ST. MARTIN'S LIGHT HOUSE (Lat 20° 37'N, Long 092° 03'E)

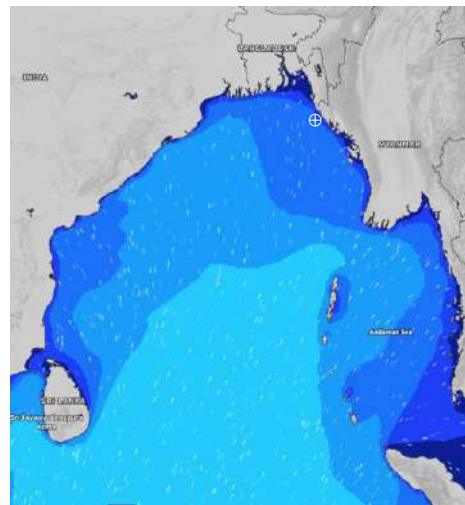
**DATE : 02 to 09 June 2024**

Date	Time	Max Wind Spd (kts)	Wind Direction	Wave Ht (m)	Sea State	Baro Pressure	Air Temp		Sea Surface Temp	Humidity (%)	Prob of Rain(%)	Sea State	Wave Ht (m)
							Max	Min					
02-06-24	0001	11	SW	1.2	3	1008	33	27	30	88%	15% (0.0 mm)	0	0
	0600	6	WNW	1.1	3	1006			29	91%	17% (0.0 mm)	1	0 - 0.1
	1200	7	SSW	1.1	3	1008			30	83%	16% (0.0 mm)	2	0.1 - 0.5
	1800	11	WSW	1.1	3	1005			30	86%	18% (0.0 mm)	3	0.5 - 1.25
03-06-24	0001	13	SW	1.2	3	1007	33	27	30	88%	14% (0.0 mm)	4	1.25 - 2.5
	0600	10	WSW	1.3	4	1006			29	92%	18% (0.0 mm)	5	2.5 - 4.0
	1200	7	SSW	1.5	4	1007			30	83%	15% (0.0 mm)	6	4.0 - 6.0
	1800	12	SW	1.5	4	1005			30	87%	16% (0.0 mm)	7	6.0 - 9.0
04-06-24	0001	13	SSW	1.6	4	1006	33	27	30	89%	18% (0.0 mm)	8	9.0 - 14.0
	0600	11	SW	1.7	4	1005			29	91%	19% (0.0 mm)	9	Over 14.0
	1200	10	S	1.8	4	1007			30	85%	18% (0.0 mm)		
	1800	11	S	1.9	4	1004			30	88%	16% (0.0 mm)		
05-06-24	0001	15	S	2.0	4	1005	33	27	30	86%	18% (0.0 mm)		
	0600	10	SSW	2.0	4	1005			29	98%	17% (0.0 mm)		
	1200	12	SSE	1.9	4	1006			30	84%	15% (0.0 mm)		
	1800	14	SSW	2.0	4	1004			30	88%	18% (0.0 mm)		

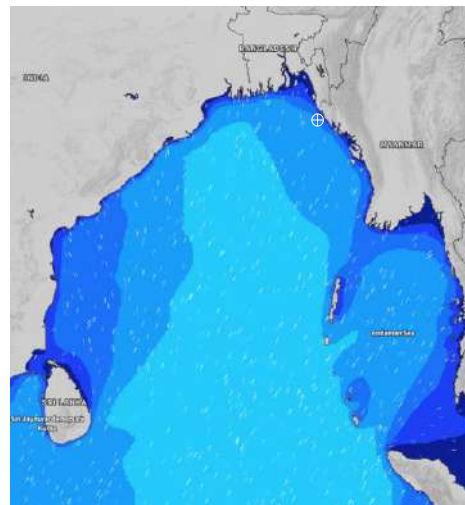
**02 June 24 Sun (Probability 98%)**



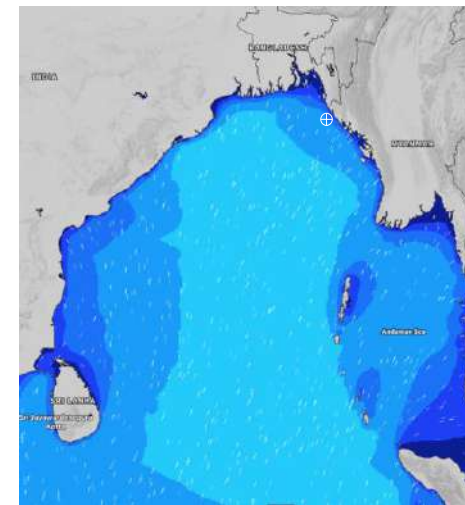
**03 June 24 Mon (Probability 95%)**



**04 June 24 Tue (Probability 90%)**



**05 June 24 Wed (Probability 80%)**



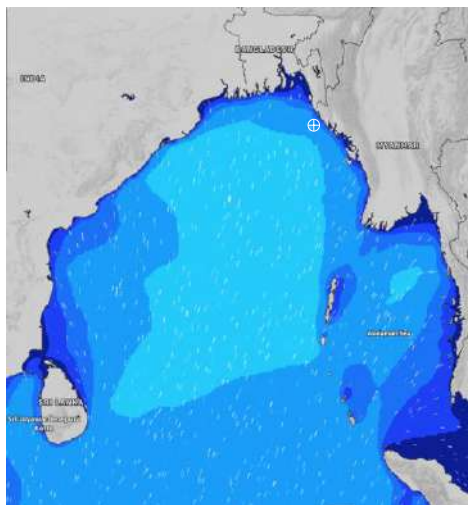
Significant wave height (m)

# MARINE WEATHER FORECAST- 15 NM WEST OF ST. MARTIN'S LIGHT HOUSE (Lat 20° 37'N, Long 092° 03'E)

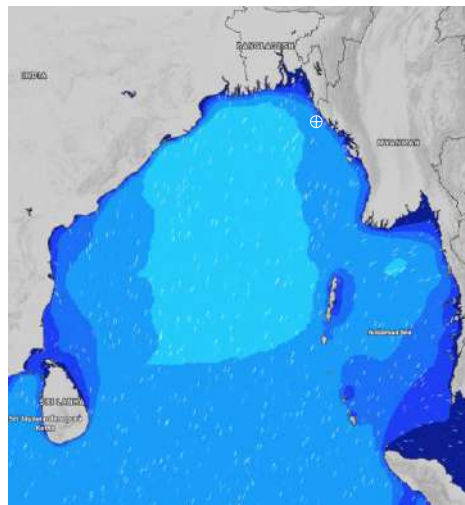
**DATE : 02 to 09 June 2024**

Date	Time	Max Wind Spd (kts)	Wind Direction	Wave Ht (m)	Sea State	Baro Pressure	Air Temp		Sea Surface Temp	Humidity (%)	Prob of Rain (%)	Sea State	Wave Ht (m)
							Max	Min					
06-06-24	0001	13	SSW	2.0	4	1007	34	28	30	89%	15% (0.0 mm)	0	0
	0600	10	SSW	2.1	4	1006			29	91%	14% (0.0 mm)	1	0 - 0.1
	1200	10	SSW	2.1	4	1007			29	83%	12% (0.0 mm)	2	0.1 - 0.5
	1800	15	SSW	2.1	4	1005			29	87%	13% (0.0 mm)	3	0.5 - 1.25
07-06-24	0001	16	SW	2.1	4	1007	34	28	30	89%	16% (0.0 mm)	4	1.25 - 2.5
	0600	15	SSW	2.2	4	1004			29	93%	15% (0.0 mm)	5	2.5 - 4.0
	1200	10	S	2.2	4	1006			29	85%	14% (0.0 mm)	6	4.0 - 6.0
	1800	11	S	2.1	4	1004			29	88%	18% (0.0 mm)	7	6.0 - 9.0
08-06-24	0001	16	S	2.1	4	1005	34	28	30	90%	17% (0.0 mm)	8	9.0 - 14.0
	0600	17	SSW	2.2	4	1004			29	94%	19% (0.0 mm)	9	Over 14.0
	1200	11	SSW	2.2	4	1005			29	82%	18% (0.0 mm)		
	1800	10	SW	2.3	4	1003			29	87%	17% (0.0 mm)		
09-06-24	0001	14	SSE	2.2	4	1003	34	28	30	91%	15% (0.0 mm)		
	0600	16	SSW	2.2	4	1002			29	96%	17% (0.0 mm)		
	1200	12	SW	2.1	4	1003			29	85%	16% (0.0 mm)		
	1800	14	SSW	2.3	4	1001			29	88%	18% (0.0 mm)		

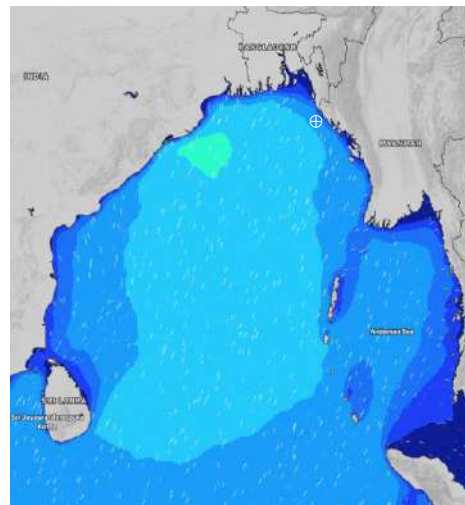
**06 June 24 Thu (Probability 70%)**



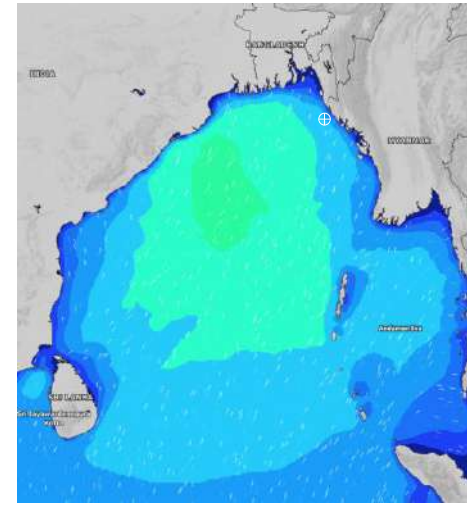
**07 June 24 Fri (Probability 60%)**



**08 June 24 Sat (Probability 50%)**



**09 June 24 Sun (Probability 50%)**



Significant wave height (m)

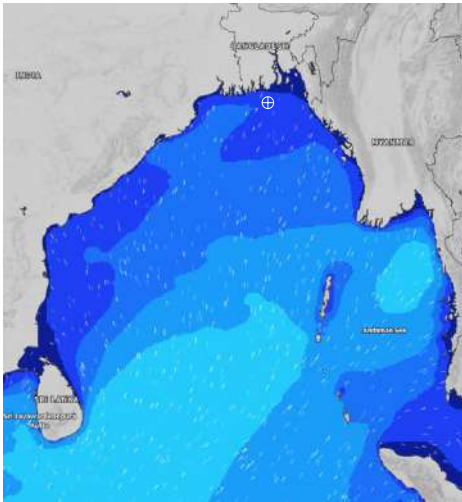


# MARINE WEATHER FORECAST- 40 NM ESE OF PAYRA FAIRWAY (Lat 21° 07' N, Long 090° 45' E)

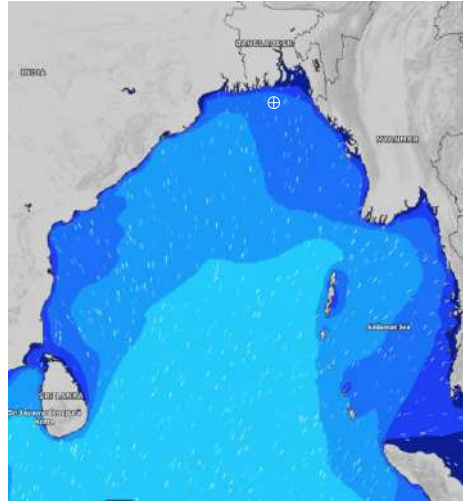
**DATE : 02 to 09 June 2024**

Date	Time	Max Wind Spd (kts)	Wind Direction	Wave Ht (m)	Sea State	Baro Pressure	Air Temp		Sea Surface Temp	Humidity (%)	Prob of Rain (%)	Sea State	Wave Ht (m)
							Max	Min					
02-06-24	0001	14	SW	1.3	4	1007	34	28	30	88%	15% (0.0 mm)	0	0
	0600	10	S	1.2	3	1006			29	91%	14% (0.0 mm)	1	0 - 0.1
	1200	10	SSW	1.1	3	1007			30	83%	16% (0.0 mm)	2	0.1 - 0.5
	1800	13	SSW	1.1	3	1005			30	87%	18% (0.0 mm)	3	0.5 - 1.25
03-06-24	0001	17	SW	1.4	4	1007	34	28	30	89%	17% (0.0 mm)	4	1.25 - 2.5
	0600	14	SW	1.5	4	1005			29	92%	15% (0.0 mm)	5	2.5 - 4.0
	1200	13	SSW	1.6	4	1006			30	86%	16% (0.0 mm)	6	4.0 - 6.0
	1800	17	SSW	1.7	4	1004			30	88%	16% (0.0 mm)	7	6.0 - 9.0
04-06-24	0001	15	SSW	1.8	4	1005	34	28	30	88%	18% (0.0 mm)	8	9.0 - 14.0
	0600	16	SSW	2.0	4	1004			29	92%	15% (0.0 mm)	9	Over 14.0
	1200	18	S	2.1	4	1005			30	83%	18% (0.0 mm)		
	1800	16	SSW	2.2	4	1003			30	85%	14% (0.0 mm)		
05-06-24	0001	18	SSW	2.2	4	1004	34	28	30	86%	17% (0.0 mm)		
	0600	14	S	2.2	4	1005			29	92%	15% (0.0 mm)		
	1200	13	SW	2.2	4	1004			30	84%	16% (0.0 mm)		
	1800	15	SSW	2.2	4	1003			30	86%	15% (0.0 mm)		

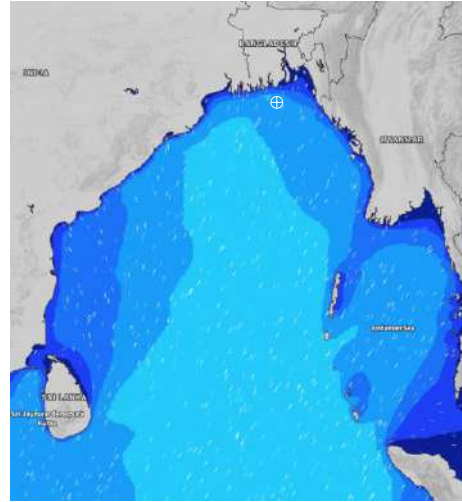
**02 June 24 Sun (Probability 98%)**



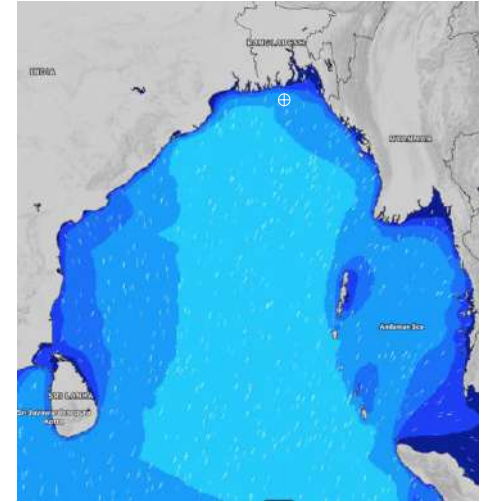
**03 June 24 Mon (Probability 95%)**



**04 June 24 Tue (Probability 90%)**



**05 June 24 Wed (Probability 80%)**



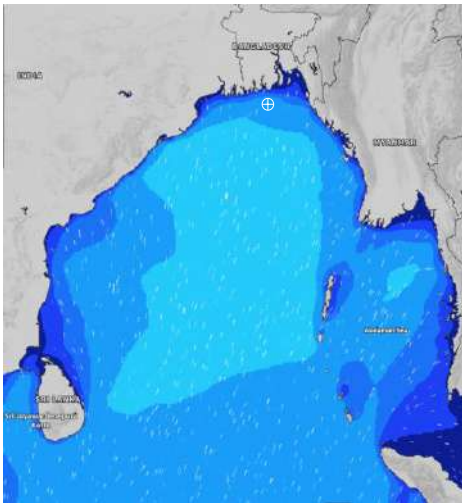
Significant wave height (m)

# MARINE WEATHER FORECAST- 40 NM ESE OF PAYRA FAIRWAY (Lat 21° 07' N, Long 090° 45' E)

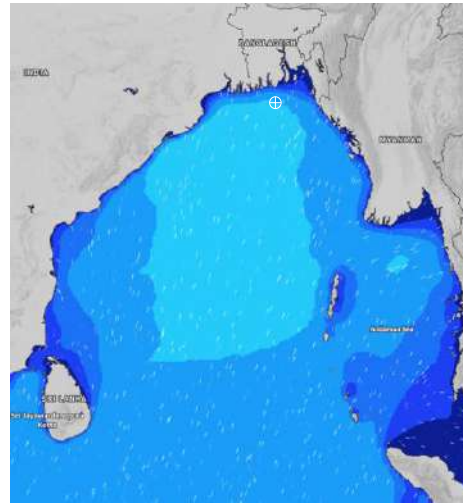
**DATE : 02 to 09 June 2024**

Date	Time	Max Wind Spd (kts)	Wind Direction	Wave Ht (m)	Sea Stae	Baro Pressure	Air Temp		Sea Surface Temp	Humidity (%)	Prob of Rain (%)	Sea State	Wave Ht (m)
							Max	Min					
06-06-24	0001	19	SW	2.3	5	1005	34	28	30	88%	17% (0.0 mm)	0	0
	0600	14	SW	2.3	5	1006			29	91%	15% (0.0 mm)	1	0 - 0.1
	1200	13	SSW	2.2	4	1005			30	82%	18% (0.0 mm)	2	0.1 - 0.5
	1800	17	SSW	2.2	4	1004			30	87%	16% (0.0 mm)	3	0.5 - 1.25
07-06-24	0001	21	SW	2.3	4	1005	34	28	30	89%	18% (0.0 mm)	4	1.25 - 2.5
	0600	15	SSW	2.4	4	1004			29	93%	17% (0.0 mm)	5	2.5 - 4.0
	1200	20	SSW	2.5	4	1004			30	85%	14% (0.0 mm)	6	4.0 - 6.0
	1800	17	SSW	2.3	4	1002			30	67%	15% (0.0 mm)	7	6.0 - 9.0
08-06-24	0001	21	SSW	2.4	4	1002	34	28	30	76%	18% (0.0 mm)	8	9.0 - 14.0
	0600	21	SW	2.4	4	1001			29	85%	16% (0.0 mm)	9	Over 14.0
	1200	22	SSW	2.5	4	1004			30	81%	18% (0.0 mm)		
	1800	19	SSW	2.6	5	1001			30	85%	14% (0.0 mm)		
09-06-24	0001	21	SSW	2.6	5	1001	34	28	30	84%	15% (0.0 mm)		
	0600	22	SSW	2.6	5	1000			29	95%	16% (0.0 mm)		
	1200	23	SSW	2.7	5	1001			30	86%	15% (0.0 mm)		
	1800	21	SSW	2.6	5	1000			30	87%	18% (0.0 mm)		

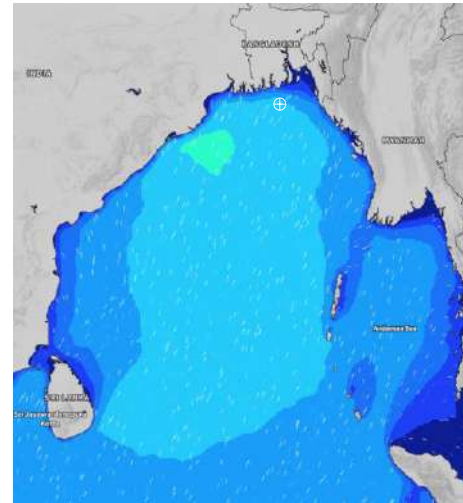
**06 June 24 Thu (Probability 70%)**



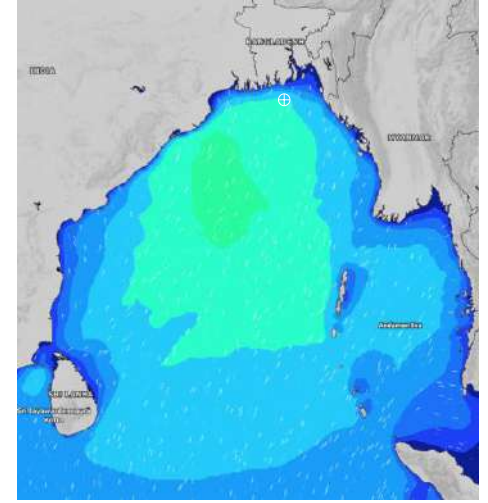
**07 June 24 Fri (Probability 60%)**



**08 June 24 Sat (Probability 50%)**



**09 June 24 Sun (Probability 50%)**



Significant wave height (m)

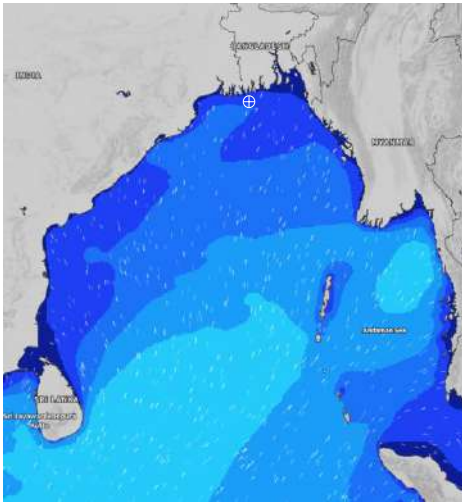


**MARINE WEATHER FORECAST- 10 NM SOUTH OF MONGLA FAIRWAY (Lat 21° 16' N, Long 089° 34' E)**

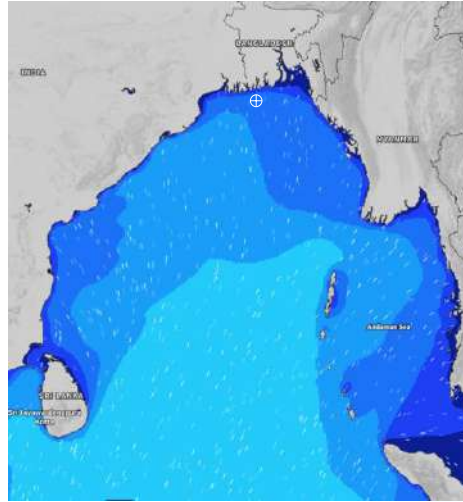
**DATE : 02 to 09 June 2024**

Date	Time	Max Wind Spd (kts)	Wind Direction	Wave Ht (m)	Sea State	Baro Pressure	Air Temp		Sea Surface Temp	Humidity (%)	Prob of Rain (%)	Sea State	Wave Ht (m)
							Max	Min					
02-06-24	0001	15	SW	1.3	4	1007	34	28	30	89%	17% (0.0 mm)	0	0
	0600	17	SSW	1.3	4	1006			30	93%	18% (0.0 mm)	1	0 - 0.1
	1200	14	SW	1.3	4	1007			31	77%	16% (0.0 mm)	2	0.1 - 0.5
	1800	16	SSW	1.3	4	1004			30	85%	18% (0.0 mm)	3	0.5 - 1.25
03-06-24	0001	21	SSW	1.5	4	1006	34	28	30	86%	17% (0.0 mm)	4	1.25 - 2.5
	0600	19	SSW	1.7	4	1004			30	98%	15% (0.0 mm)	5	2.5 - 4.0
	1200	15	SSW	1.7	4	1006			31	76%	16% (0.0 mm)	6	4.0 - 6.0
	1800	18	SSW	2.0	4	1003			30	89%	18% (0.0 mm)	7	6.0 - 9.0
04-06-24	0001	18	SSW	2.1	4	1004	34	28	30	85%	17% (0.0 mm)	8	9.0 - 14.0
	0600	24	SSW	2.1	4	1003			30	98%	19% (0.0 mm)	9	Over 14.0
	1200	18	SSW	2.2	4	1004			31	74%	15% (0.0 mm)		
	1800	18	SSW	2.2	4	1002			30	88%	17% (0.0 mm)		
05-06-24	0001	29	SSW	2.3	4	1004	34	28	30	86%	16% (0.0 mm)		
	0600	20	SSW	2.2	4	1004			30	98%	18% (0.0 mm)		
	1200	17	S	2.3	4	1005			31	75%	15% (0.0 mm)		
	1800	16	SSW	2.3	4	1003			30	88%	16% (0.0 mm)		

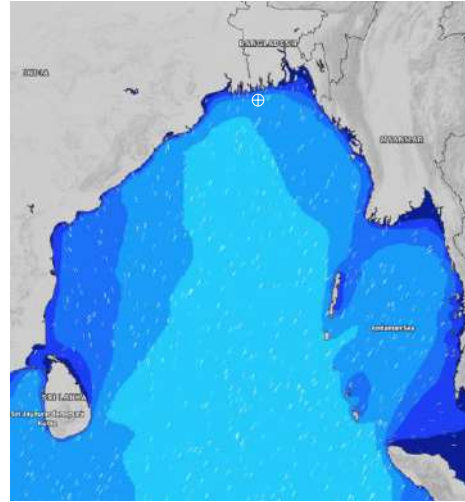
**02 June 24 Sun (Probability 98%)**



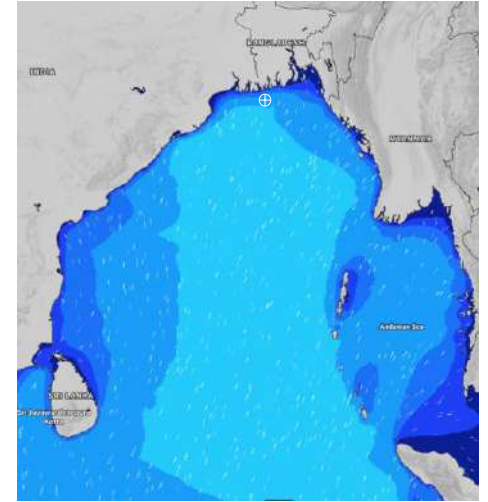
**03 June 24 Mon (Probability 95%)**



**04 June 24 Tue (Probability 90%)**



**05 June 24 Wed (Probability 80%)**



Significant wave height (m)

# MARINE WEATHER FORECAST- 10 NM SOUTH OF MONGLA FAIRWAY (Lat 21° 16' N, Long 089° 34' E)

**DATE : 02 to 09 June 2024**

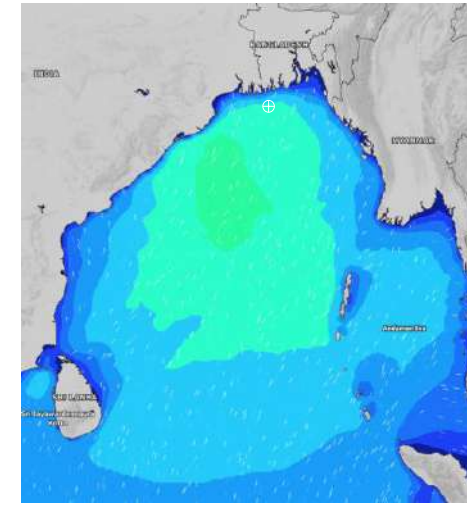
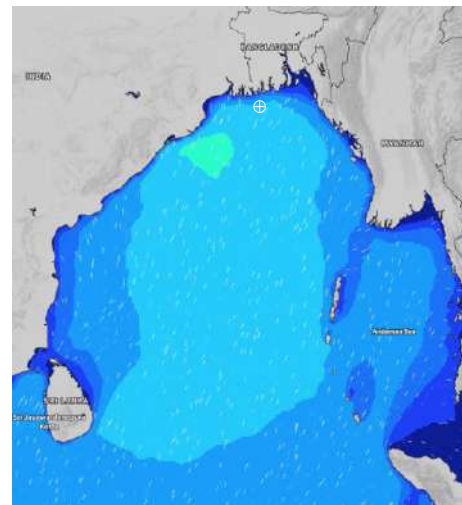
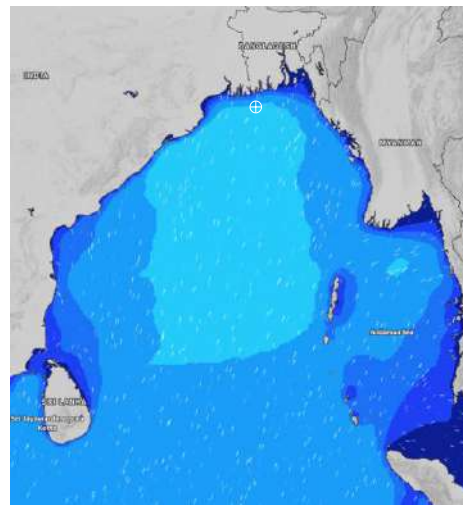
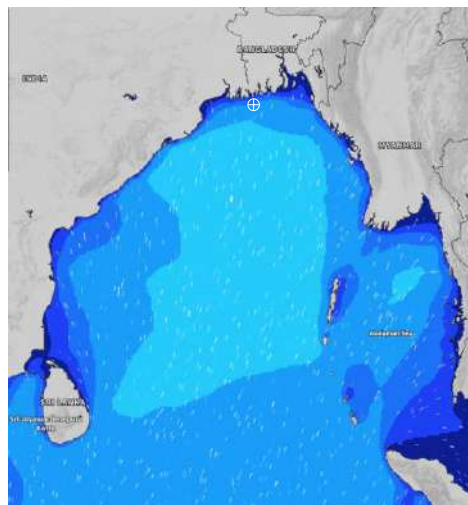
Date	Time	Max Wind Spd (kts)	Wind Direction	Wave Ht (m)	Sea State	Baro Pressure	Air Temp		Sea Surface Temp	Humidity (%)	Prob of Rain (%)	Sea State	Wave Ht (m)
							Max	Min					
06-06-24	0001	15	SW	2.2	4	1005	34	29	30	88%	15% (0.0 mm)	0	0
	0600	17	SSW	2.2	4	1005			30	91%	18% (0.0 mm)	1	0 - 0.1
	1200	15	S	2.1	4	1006			30	85%	21% (0.0 mm)	2	0.1 - 0.5
	1800	16	SSW	2.1	4	1004			30	87%	22% (0.0 mm)	3	0.5 - 1.25
07-06-24	0001	23	SW	2.3	4	1004	34	29	30	86%	26% (0.0 mm)	4	1.25 - 2.5
	0600	20	SW	2.5	4	1003			30	98%	15% (0.0 mm)	5	2.5 - 4.0
	1200	19	SSW	2.4	4	1004			30	85%	15% (0.0 mm)	6	4.0 - 6.0
	1800	18	SSW	2.3	4	1002			30	89%	15% (0.0 mm)	7	6.0 - 9.0
08-06-24	0001	20	SSW	2.3	4	1003	34	29	30	86%	10% (0.0 mm)	8	9.0 - 14.0
	0600	20	SSW	2.5	4	1004			30	98%	15% (0.0 mm)	9	Over 14.0
	1200	22	SSW	2.5	4	1003			30	87%	15% (0.0 mm)		
	1800	23	S	2.6	5	1002			30	85%	16% (0.0 mm)		
09-06-24	0001	20	S	2.6	5	1003	34	29	30	86%	18% (0.0 mm)		
	0600	24	SSW	2.7	5	1002			30	98%	19% (0.0 mm)		
	1200	25	SW	2.7	5	1004			30	87%	21% (0.0 mm)		
	1800	27	SSW	2.8	5	1003			30	85%	19% (0.0 mm)		

**06 June 24 Thu (Probability 70%)**

**07 June 24 Fri (Probability 60%)**

**08 June 24 Sat (Probability 50%)**

**09 June 24 Sun (Probability 50%)**

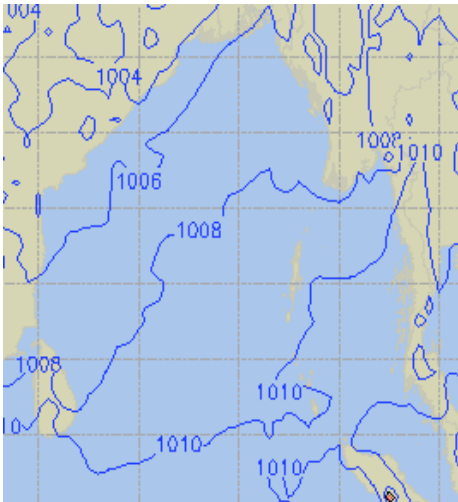


Significant wave height (m)

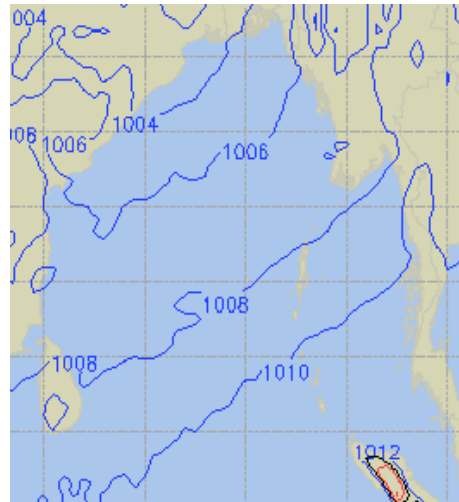


## PREDICTED SURFACE PRESSURE FORECAST (02 to 08 June 2024)

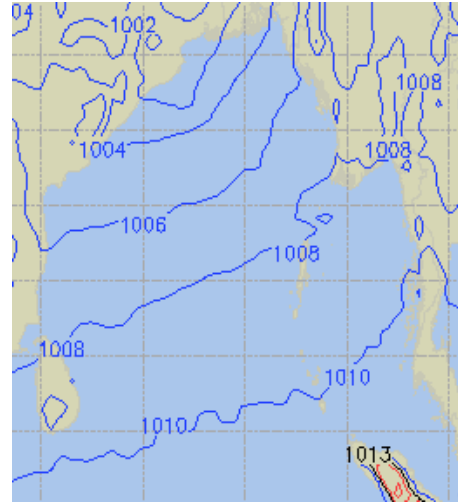
**02 June 24 Sun (Probability 98%)**



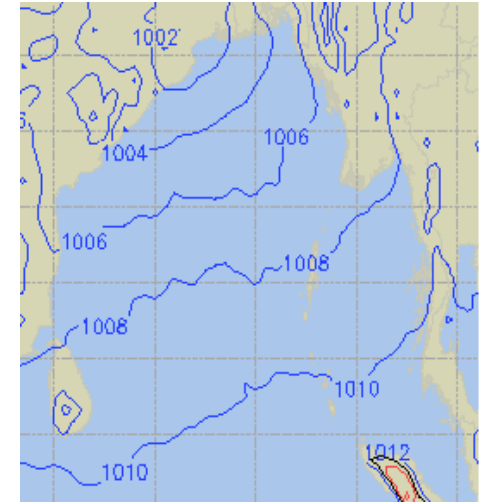
**03 June 24 Mon (Probability 95%)**



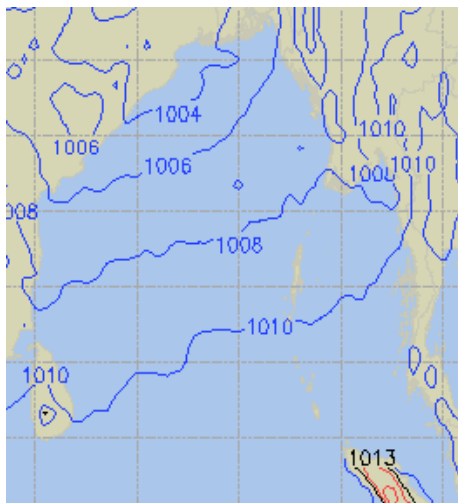
**04 June 24 Tue (Probability 90%)**



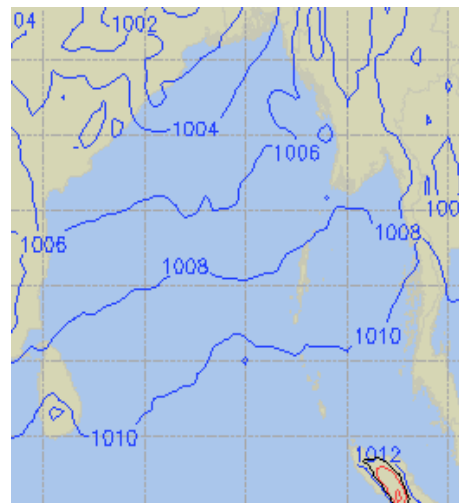
**05 June 24 Wed (Probability 80%)**



**06 June 24 Thu (Probability 70%)**



**07 June 24 Fri (Probability 60%)**



**08 June 24 Sat (Probability 50%)**

