



**SUMMARY OF MARINE WEATHER FORECAST**  
**COASTAL AREA OF BANGLADESH**  
**DATE: 02 to 09 May 2026**



Fleet Forecast	The trough of low persists from West Bengal to North Bay.
Wind Direction, Speed	South-west/Southerly 10-15 kts, temporary gusting up to 20 kts.
Wave Height & Sea State	Ctg Outer Anchorage: 0.2 to 0.7 m (Sea state: 2 to 3) Abeam to Cox's Bazar: 0.9 to 1.6 m (Sea state: 3 to 4) St. Martin's Island: 0.8 to 1.6 m (Sea state 3 to 4) Payra Fairway Buoy: 0.9 to 2.0 m (Sea state: 3 to 4) Mongla Fairway Buoy: 0.9 to 2.0 m (Sea state: 3 to 4) Outer EEZ: 1.0 to 2.1 m (Sea state: 3 to 4)
Sea Surface Temperature	25° C - 28° C
Baro Pressure	1007-1010 mb
Rainfall	Cloudy to cloudy sky with moderate to heavy rain/thunder showers with gusty wind is likely to occur over Bay of Bengal and adjoining area.
Fog & Visibility	Hazy condition over the Bay of Bengal & coastal area, Visibility 1.0 – 5.0 km

**Marine Weather Outlook (02 to 09 May 2026):**

- Cloudy to cloudy sky with Light to moderate rain/thunder showers with gusty wind is likely to occur over Bay of Bengal and adjoining area.
- Hazy condition over the Bay of Bengal & coastal area.
- Rainfall activity may decrease during the last period.



## MARINE WEATHER FORECAST (02 to 09 May 2026) PATENGA POINT (22° 12' N, 091° 38' E)



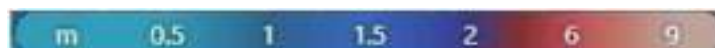
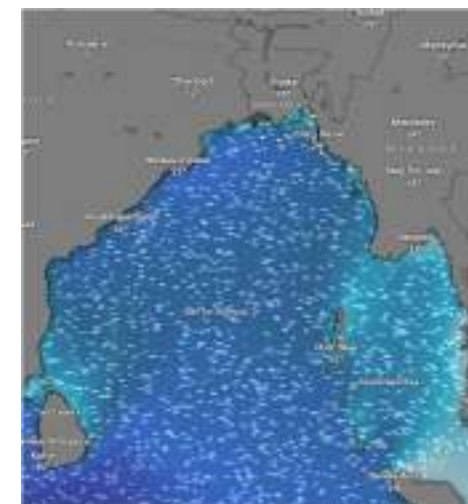
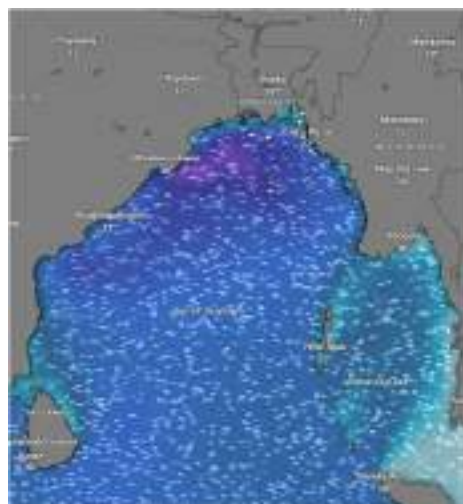
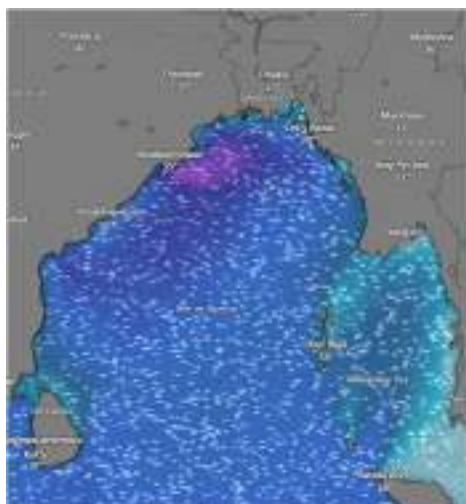
Date	Time	Air Temp (°C)		Sea Surface Temp (°C)	Baro Pressure (mbar)	Wind Direction	Wind Spd (kts)		Wave Ht (m)	Sea State	Humidity (%)	Prob of Rain (%)	Amount of Rain (mm)
		Max	Min				Gusting	Avg					
02-05-26 (Saturday)	0001	29	22	25	1007	SSE	11	07	0.4	2	91	52	0.6
	0600			26	1008	SE	15	11	0.4	2	93	62	0.6
	1200			28	1006	SSE	16	12	0.5	3	86	45	0.5
	1800			26	1005	SSE	15	11	0.5	3	89	75	0.7
03-05-26 (Sunday)	0001	29	22	25	1007	SSE	18	14	0.7	3	90	39	0.4
	0600			26	1008	SSE	20	15	0.7	3	92	77	2.3
	1200			28	1006	SSE	13	09	0.4	2	84	90	3.5
	1800			26	1005	SSE	16	12	0.5	3	88	34	0.3
04-05-26 (Monday)	0001	29	23	25	1010	S	17	13	0.6	3	92	43	0.4
	0600			26	1011	S	10	06	0.5	3	93	57	0.6
	1200			28	1009	SSE	14	10	0.4	2	85	51	0.5
	1800			26	1008	SSW	13	09	0.3	2	88	20	0.1
05-05-26 (Tuesday)	0001	29	23	25	1011	S	11	07	0.4	2	91	24	0.1
	0600			26	1013	S	10	06	0.4	2	92	33	0.3
	1200			28	1010	SSW	09	05	0.3	2	85	16	0.0
	1800			26	1009	SSW	10	06	0.3	2	89	18	0.0

02 May 2026

03 May 2026

04 May 2026

05 May 2026



Significant wave height (m)



## MARINE WEATHER FORECAST (02 to 09 May 2026) PATENGA POINT (22° 12' N, 091° 38' E)



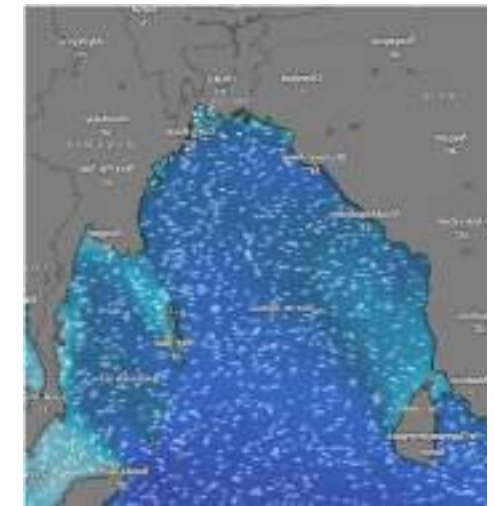
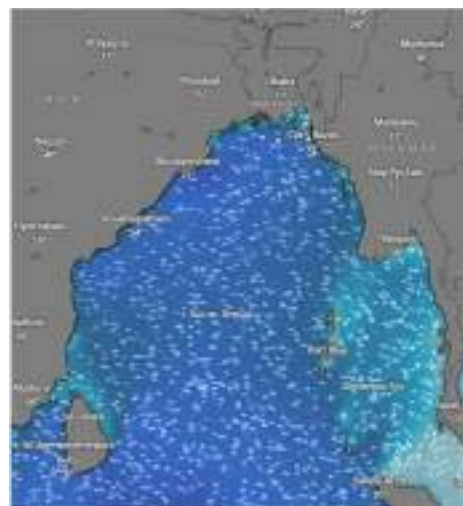
Date	Time	Air Temp (°C)		Sea Surface Temp (°C)	Baro Pressure (mbar)	Wind Direction	Wind Spd (kts)		Wave Ht (m)	Sea State	Humidity (%)	Prob of Rain (%)	Amount of Rain (mm)
		Max	Min				Gusting	Avg					
06-05-26 (Wednesday)	0001	30	24	25	1009	SSW	09	5	0.5	3	92	32	0.3
	0600			26	1010	SSE	10	9	0.5	3	93	37	0.4
	1200			28	1008	S	17	13	0.4	2	81	18	0.0
	1800			26	1007	SSW	12	08	0.3	2	85	10	0.0
07-05-26 (Thursday)	0001	30	24	25	1008	SSW	10	6	0.3	2	92	59	0.6
	0600			26	1009	SSE	09	05	0.3	2	93	43	0.5
	1200			28	1007	SSW	10	06	0.4	2	80	15	0.0
	1800			26	1006	SSW	07	04	0.3	2	87	37	0.4
08-05-26 (Friday)	0001	30	24	25	1008	S	09	05	0.3	2	90	43	0.4
	0600			26	1009	SE	07	04	0.2	2	93	34	0.3
	1200			28	1007	W	10	06	0.3	2	85	22	0.0
	1800			26	1006	W	09	05	0.3	2	88	36	0.4
09-05-26 (Saturday)	0001	30	24	25	1008	NW	11	07	0.3	2	91	32	0.3
	0600			26	1009	NNW	10	06	0.2	2	92	45	0.5
	1200			28	1007	NW	12	08	0.2	2	86	10	0.0
	1800			26	1006	NW	11	07	0.2	2	89	18	0.0

06 May 2026

07 May 2026

08 May 2026

09 May 2026



Significant wave height (m)

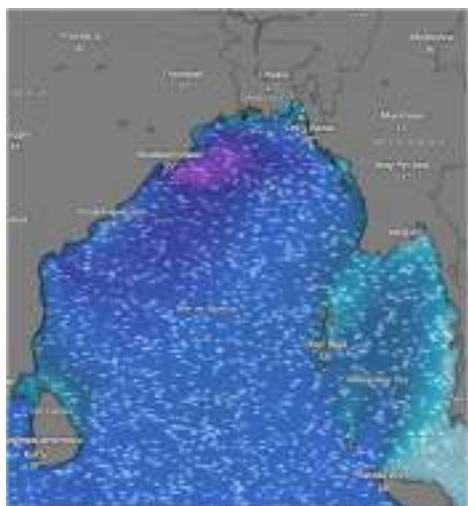


## MARINE WEATHER FORECAST (02 to 09 May 2026) ABEAM TO KUTUBDIA (21° 51' N, 091° 40' E)

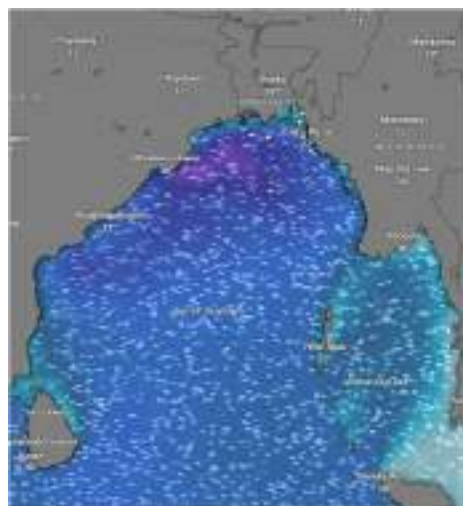


Date	Time	Air Temp (°C)		Sea Surface Temp (°C)	Baro Pressure (mbar)	Wind Direction	Wind Spd (kts)		Wave Ht (m)	Sea State	Humidity (%)	Prob of Rain (%)	Amount of Rain (mm)
		Max	Min				Gusting	Avg					
02-05-26 (Saturday)	0001	29	22	25	1007	S	16	12	0.6	3	91	53	0.6
	0600			26	1008	SE	17	13	0.6	3	94	24	0.1
	1200			28	1006	SSE	18	14	0.7	3	85	45	0.5
	1800			26	1005	SSE	15	11	0.6	3	87	66	0.7
03-05-26 (Sunday)	0001	29	22	25	1007	SSE	22	18	0.8	3	91	40	0.4
	0600			26	1008	SSW	16	16	0.9	3	90	76	2.5
	1200			28	1006	SE	12	08	0.7	3	89	90	3.7
	1800			26	1005	SSE	20	15	0.8	3	91	34	0.3
04-05-26 (Monday)	0001	29	23	25	1010	SSW	20	15	0.9	3	92	43	0.4
	0600			26	1011	S	14	10	0.8	3	93	57	0.6
	1200			28	1009	SSW	15	10	0.7	3	85	51	0.5
	1800			26	1008	S	15	11	0.6	3	88	24	0.1
05-05-26 (Tuesday)	0001	29	23	25	1011	SSW	12	08	0.6	3	91	26	0.1
	0600			26	1013	SSW	12	08	0.5	3	92	35	0.3
	1200			28	1010	S	10	06	0.4	3	79	16	0.0
	1800			26	1009	SSW	13	08	0.5	3	86	18	0.0

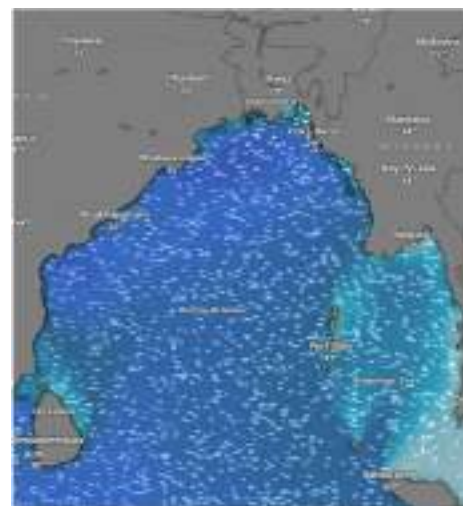
02 May 2026



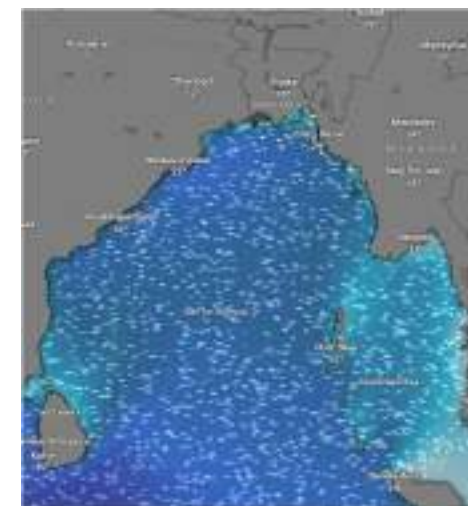
03 May 2026



04 May 2026



05 May 2026



Significant wave height (m)



# MARINE WEATHER FORECAST (02 to 09 May 2026)

## ABEAM TO KUTUBDIA (21° 51' N, 091° 40' E)



Date	Time	Air Temp (°C)		Sea Surface Temp (°C)	Baro Pressure (mbar)	Wind Direction	Wind Spd (kts)		Wave Ht (m)	Sea State	Humidity (%)	Prob of Rain (%)	Amount of Rain (mm)
		Max	Min				Gusting	Avg					
06-05-26 (Wednesday)	0001	29	23	25	1009	SSW	16	12	0.5	3	92	32	0.3
	0600			26	1010	SSE	18	14	0.5	3	93	37	0.4
	1200			28	1008	SSE	18	14	0.5	3	81	18	0.0
	1800			26	1007	SSW	13	09	0.5	3	85	10	0.0
07-05-26 (Thursday)	0001	30	24	25	1008	SSW	10	06	0.5	3	92	59	0.6
	0600			26	1009	SSE	13	09	0.5	3	93	43	0.5
	1200			28	1007	SSW	11	07	0.4	2	80	15	0.0
	1800			26	1006	W	09	05	0.4	2	87	37	0.4
08-05-26 (Friday)	0001	30	24	25	1008	SSW	10	06	0.4	2	91	41	0.5
	0600			26	1009	SW	09	05	0.4	2	92	34	0.4
	1200			28	1007	W	10	06	0.4	2	85	24	0.1
	1800			26	1006	W	11	07	0.4	2	88	36	0.4
09-05-26 (Saturday)	0001	30	24	25	1008	NW	13	09	0.4	2	90	32	0.2
	0600			26	1009	N	14	10	0.4	2	91	24	0.1
	1200			28	1007	NNW	12	08	0.4	2	86	18	0.0
	1800			26	1006	NW	13	09	0.4	2	87	22	0.0

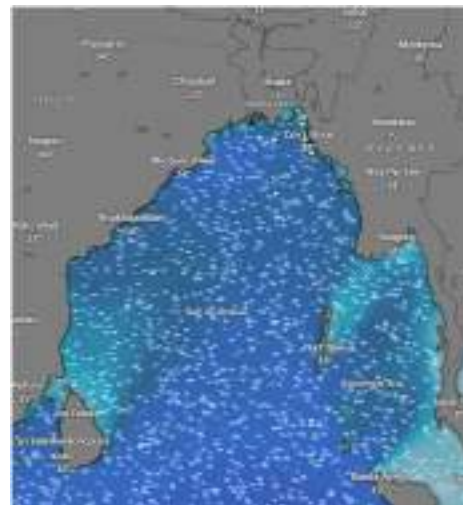
06 May 2026



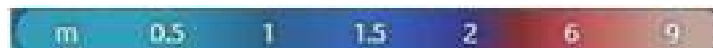
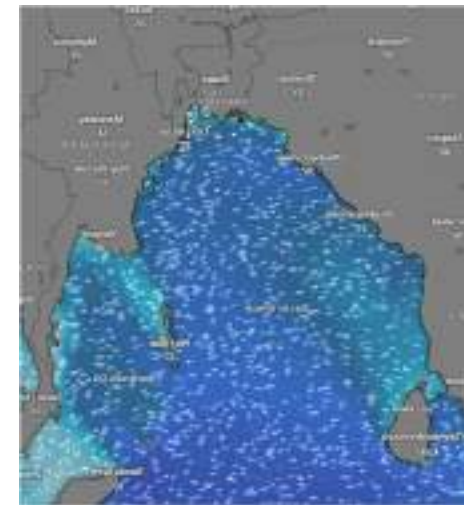
07 May 2026



08 May 2026



09 May 2026



Significant wave height (m)



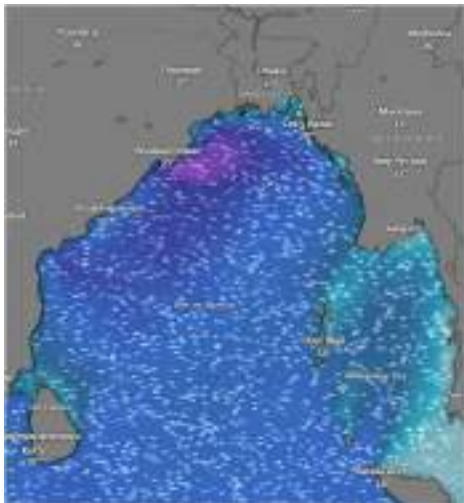
# MARINE WEATHER FORECAST (02 to 09 May 2026)

## ABEAM TO ELEPHANT POINT (21° 11' N, 091° 52' E)

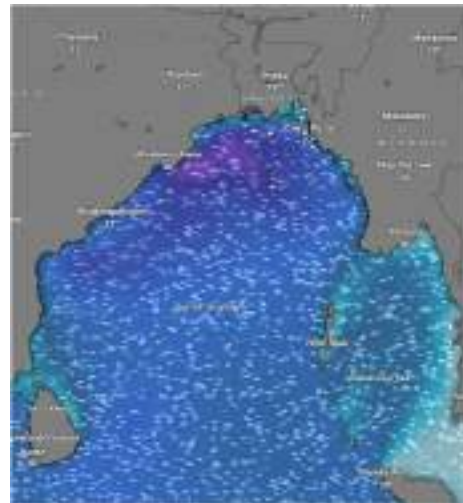


Date	Time	Air Temp (°C)		Sea Surface Temp (°C)	Baro Pressure (mbar)	Wind Direction	Wind Spd (kts)		Wave Ht (m)	Sea State	Humidity (%)	Prob of Rain (%)	Amount of Rain (mm)
		Max	Min				Gusting	Avg					
02-05-26 (Saturday)	0001	29	22	25	1007	SSW	15	11	1.3	4	91	56	0.7
	0600			26	1008	SSW	16	12	1.3	4	93	34	0.
	1200			28	1006	SSE	17	13	1.4	4	89	43	0.5
	1800			26	1005	SSE	15	11	1.5	4	95	64	0.7
03-05-26 (Sunday)	0001	29	22	25	1007	SSE	12	18	1.6	4	91	39	0.4
	0600			26	1008	SSW	13	09	1.6	4	90	77	2.3
	1200			28	1006	S	11	07	1.6	4	89	90	3.5
	1800			26	1005	SSE	18	14	1.5	4	91	34	0.3
04-05-26 (Monday)	0001	29	23	25	1010	S	20	15	1.6	4	92	43	0.4
	0600			26	1011	SSE	16	12	1.6	4	93	57	0.6
	1200			28	1009	SSE	16	12	1.4	4	85	51	0.5
	1800			26	1008	SW	14	10	1.3	4	88	20	0.1
05-05-26 (Tuesday)	0001	29	23	25	1011	SSW	12	08	1.2	3	91	25	0.1
	0600			26	1013	S	13	09	1.1	3	93	33	0.3
	1200			28	1010	SSW	09	04	1.0	3	85	16	0.0
	1800			26	1009	SW	12	08	1.0	3	88	18	0.0

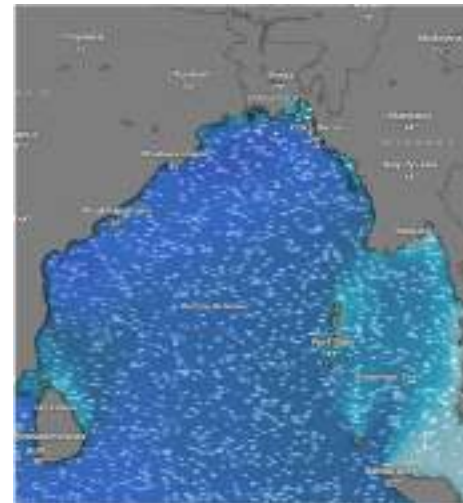
02 May 2026



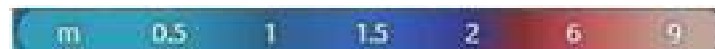
03 May 2026



04 May 2026



05 May 2026



Significant wave height (m)



# MARINE WEATHER FORECAST (02 to 09 May 2026) ABEAM TO ELEPHANT POINT (21° 11' N, 091° 52' E)



Date	Time	Air Temp (°C)		Sea Surface Temp (°C)	Baro Pressure (mbar)	Win Direction	Wind Spd (kts)		Wave Ht (m)	Sea State	Humidity (%)	Prob of Rain (%)	Amount of Rain (mm)
		Max	Min				Gusting	Avg					
06-05-26 (Wednesday)	0001	29	23	25	1009	SSW	13	09	1.1	3	90	32	0.3
	0600			26	1010	SSE	17	07	1.0	3	93	37	0.4
	1200			28	1008	SSE	15	06	1.0	3	86	18	0.0
	1800			26	1007	SSW	12	09	0.9	3	87	10	0.0
07-05-26 (Thursday)	0001	30	24	25	1008	SW	10	06	0.9	3	91	59	0.6
	0600			26	1009	SE	11	07	0.9	3	96	43	0.5
	1200			28	1007	SSW	10	06	0.9	3	82	15	0.0
	1800			26	1006	W	11	07	0.9	3	85	37	0.4
08-05-26 (Friday)	0001	30	24	25	1008	SW	09	05	0.9	3	92	42	0.4
	0600			26	1009	W	10	06	0.9	3	96	35	0.3
	1200			28	1007	W	09	05	0.9	3	85	20	0.1
	1800			26	1006	SW	11	07	0.9	3	89	51	0.5
09-05-26 (Saturday)	0001	30	24	25	1008	NNW	14	10	0.9	3	90	35	0.2
	0600			26	1009	N	11	07	0.9	3	95	26	0.1
	1200			28	1007	NNW	14	10	0.9	3	84	15	0.0
	1800			26	1006	NW	16	12	0.9	3	87	26	0.1

06 May 2026



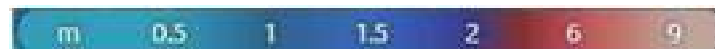
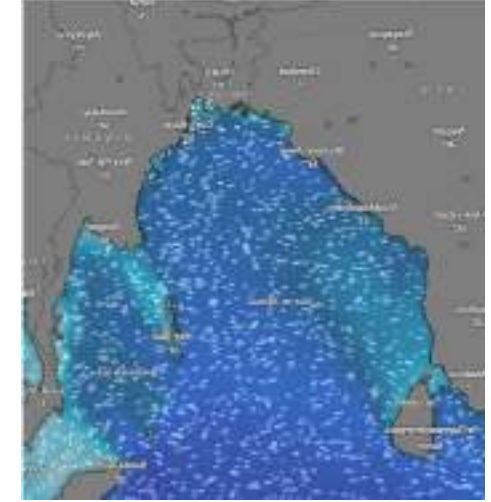
07 May 2026



08 May 2026



09 May 2026



Significant wave height (m)



# MARINE WEATHER FORECAST (02 to 09 May 2026)

## ABEAM TO ST. MARTIN'S LIGHT HOUSE (20° 37' N, 092° 08' E)

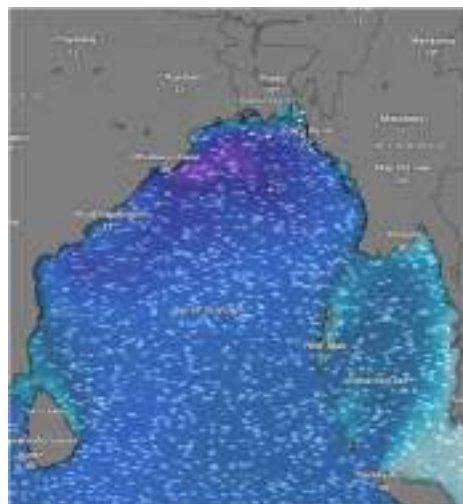


Date	Time	AirTemp (°C)		Sea Surface Temp (°C)	Baro Pressure (mbar)	Wind Direction	Wind Spd (kts)		Wave Ht (m)	Sea State	Humidity (%)	Prob of Rain (%)	Amount of Rain (mm)
		Max	Min				Gusting	Avg					
02-05-26 (Saturday)	0001	29	22	25	1007	SSW	13	09	1.3	4	90	56	0.6
	0600			26	1008	SSE	12	08	1.3	4	93	62	0.6
	1200			28	1006	SE	11	07	1.4	4	85	32	0.3
	1800			26	1005	SSE	09	05	1.5	4	88	57	0.6
03-05-26 (Sunday)	0001	29	22	25	1007	SE	18	14	1.6	4	91	39	0.4
	0600			26	1008	SSE	16	12	1.6	4	90	77	2.3
	1200			28	1006	SSE	17	13	1.6	4	89	90	3.5
	1800			26	1005	S	13	09	1.5	4	91	34	0.3
04-05-26 (Monday)	0001	29	23	25	1010	S	15	11	1.6	4	90	41	0.4
	0600			26	1011	SSE	12	08	1.6	4	92	61	0.6
	1200			28	1009	SSW	12	08	1.5	4	86	24	0.1
	1800			26	1008	SW	13	09	1.3	4	87	34	0.3
05-05-26 (Tuesday)	0001	29	23	25	1011	SSW	11	07	1.2	4	92	24	0.1
	0600			26	1013	SSE	10	06	1.1	3	93	33	0.3
	1200			28	1010	S	09	05	1.0	3	79	16	0.0
	1800			26	1009	SE	14	10	1.0	3	86	18	0.0

02 May 2026



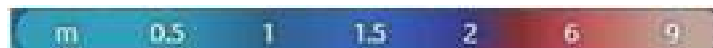
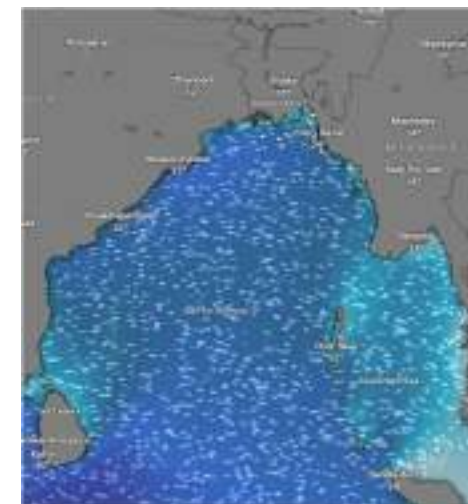
03 May 2026



04 May 2026



05 May 2026



Significant wave height (m)



# MARINE WEATHER FORECAST (02 to 09 May 2026)

## ABEAM TO ST. MARTIN'S LIGHT HOUSE (20° 37' N, 092° 08' E)



Date	Time	Air Temp (°C)		Sea Surface Temp (°C)	Baro Pressure (mbar)	Wind Direction	Wind Spd (kts)		Wave Ht (m)	Sea State	Humidity (%)	Prob of Rain (%)	Amount of Rain (mm)
		Max	Min				Gusting	Avg					
06-05-26 (Wednesday)	0001	29	23	25	1009	SW	11	07	1.0	3	92	32	0.3
	0600			26	1010	S	13	09	1.0	3	93	37	0.4
	1200			28	1008	E	10	05	1.0	3	81	18	0.0
	1800			26	1007	W	11	06	0.9	3	85	10	0.0
07-05-26 (Thursday)	0001	30	24	25	1008	W	11	07	1.0	3	92	59	0.6
	0600			26	1009	W	09	05	1.0	3	93	43	0.5
	1200			28	1007	SW	10	06	0.9	3	80	15	0.0
	1800			26	1006	W	13	09	0.9	3	87	37	0.4
08-05-26 (Friday)	0001	30	24	25	1008	W	11	07	1.0	3	90	42	0.4
	0600			26	1009	W	10	06	1.0	3	91	36	0.4
	1200			28	1007	W	11	07	1.0	3	85	20	0.0
	1800			26	1006	W	13	09	1.0	3	88	29	0.3
09-05-26 (Saturday)	0001	30	24	25	1008	NW	14	10	0.8	3	89	32	0.2
	0600			26	1009	N	12	08	0.9	3	90	24	0.1
	1200			28	1007	NNW	15	11	0.8	3	84	15	0.0
	1800			26	1006	NW	17	13	0.8	3	87	26	0.1

06 May 2026



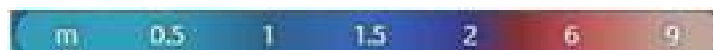
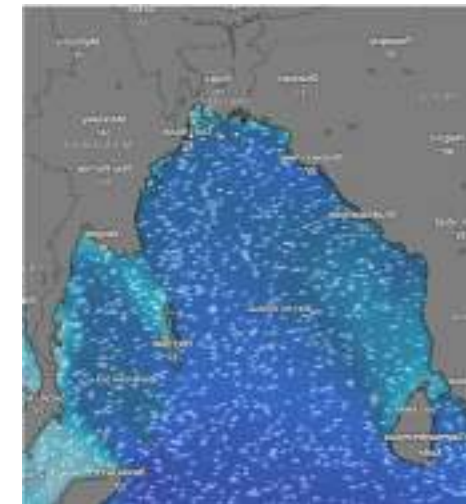
07 May 2026



08 May 2026



09 May 2026



Significant wave height (m)



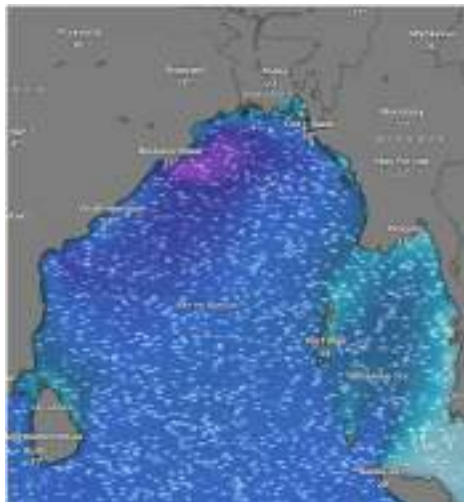
# MARINE WEATHER FORECAST (02 to 09 May 2026)



## PAYRA FAIRWAY (21° 22' N, 090° 6' E)

Date	Time	Air Temp (°C)		Sea Surface Temp (°C)	Baro Pressure (mbar)	Wind Direction	Wind Spd (kts)		Wave Ht (m)	Sea State	Humidity (%)	Prob of Rain (%)	Amount of Rain (mm)
		Max	Min				Gusting	Avg					
02-05-26 (Saturday)	0001	29	22	25	1007	SSW	24	16	1.6	4	90	88	2.7
	0600			26	1008	SSW	20	15	1.7	4	92	48	0.5
	1200			28	1006	SSW	18	14	1.7	4	84	65	0.7
	1800			26	1005	SSE	11	07	1.8	4	88	43	0.5
03-05-26 (Sunday)	0001	29	22	25	1007	SSW	20	15	1.9	4	90	35	0.4
	0600			26	1008	SSW	26	18	1.9	4	91	98	2.5
	1200			28	1006	SW	17	13	1.9	4	88	95	3.5
	1800			26	1005	SSW	28	20	1.9	4	93	45	0.6
04-05-26 (Monday)	0001	29	23	25	1010	S	25	17	2.0	4	92	50	0.5
	0600			26	1011	S	17	13	1.8	4	95	73	0.8
	1200			28	1009	SSW	15	11	1.6	4	88	65	0.7
	1800			26	1008	SSW	15	11	1.5	4	86	17	0.0
05-05-26 (Tuesday)	0001	29	23	25	1011	SSW	17	13	1.5	4	90	24	0.1
	0600			26	1013	SSE	16	12	1.3	4	92	33	0.3
	1200			28	1010	SW	18	14	1.3	4	83	16	0.0
	1800			26	1009	SSW	14	10	1.2	3	89	18	0.0

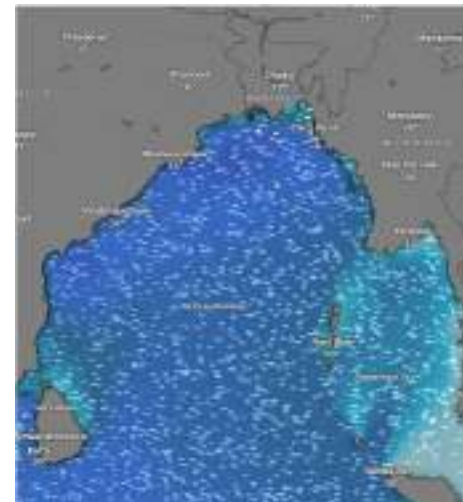
02 May 2026



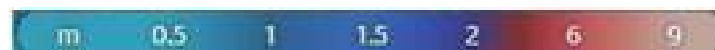
03 May 2026



04 May 2026



05 May 2026



Significant wave height (m)



# MARINE WEATHER FORECAST (02 to 09 May 2026)



## PAYRA FAIRWAY (21° 22' N, 090° 6' E)

Date	Time	Air Temp (°C)		Sea Surface Temp (°C)	Baro Pressure (mbar)	Wind Direction	Wind Spd (kts)		Wae Ht (m)	Sea State	Humidity (%)	Prob of Rain (%)	Amount of Rain (mm)
		Max	Min				Gusting	Avg					
06-05-26 (Wednesday)	0001	29	23	25	1009	SW	16	12	1.1	3	92	32	0.3
	0600			26	1010	SW	27	19	1.2	3	93	37	0.4
	1200			28	1008	S	14	10	1.2	3	81	18	0.0
	1800			26	1007	SW	15	11	1.2	3	85	10	0.0
07-05-26 (Thursday)	0001	30	24	25	1008	SSW	13	09	1.2	3	92	59	0.6
	0600			26	1009	SSW	15	11	1.1	3	93	43	0.5
	1200			28	1007	SSE	10	06	1.0	3	80	15	0.0
	1800			26	1006	SW	12	08	0.9	3	87	37	0.4
08-05-26 (Friday)	0001	30	24	25	1008	SSW	13	09	0.9	3	90	39	0.4
	0600			26	1009	W	09	05	0.9	3	92	46	0.5
	1200			28	1007	SE	10	06	0.9	3	85	26	0.1
	1800			26	1006	SSW	11	07	0.9	3	88	37	0.4
09-05-26 (Saturday)	0001	30	24	25	1008	NW	10	06	0.9	3	90	30	0.4
	0600			26	1009	NW	09	05	0.9	3	92	45	0.5
	1200			28	1007	NNW	09	05	0.9	3	85	22	0.1
	1800			26	1006	W	10	06	0.9	3	88	36	0.4

06 May 2026



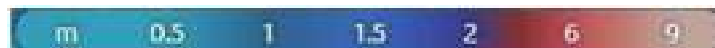
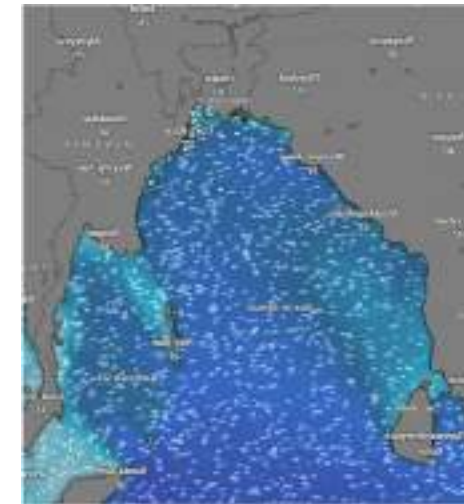
07 May 2026



08 May 2026



09 May 2026



Significant wave height (m)



# MARINE WEATHER FORECAST (02 to 09 May 2026)

## MONGLA FAIRWAY (21° 26' N, 089° 34' E)



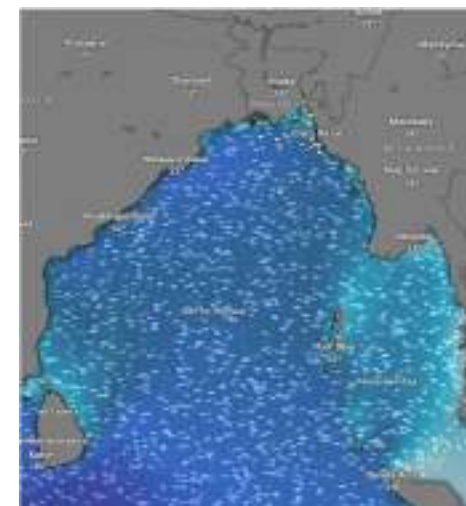
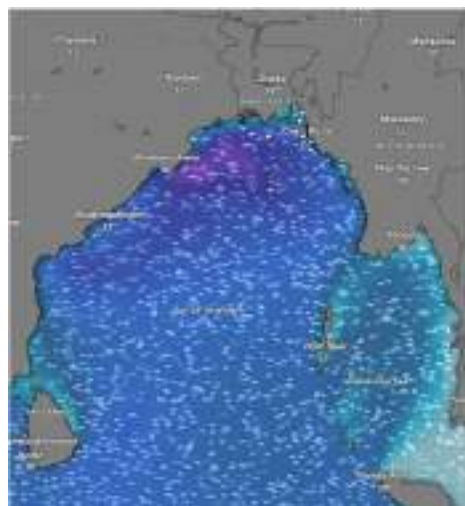
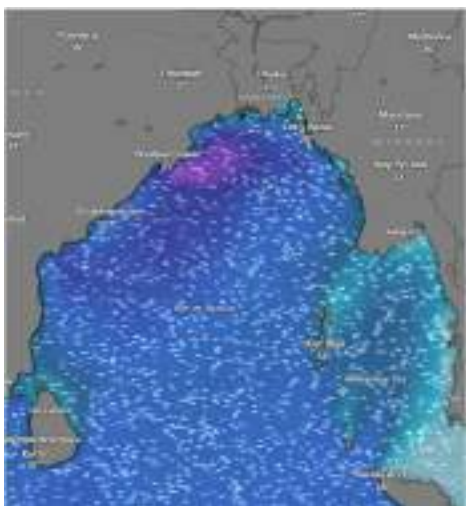
Date	Time	Air Temp (°C)		Sea Surface Temp (°C)	Baro Pressure (mbar)	Wind Direction	Wind Spd (kts)		Wave Ht (m)	Sea State	Humidity (%)	Prob of Rain (%)	Amount of Rain (mm)
		Max	Min				Gusting	Avg					
02-05-26 (Saturday)	0001	29	22	25	1007	SSW	23	17	1.8	4	91	86	2.5
	0600			26	1008	SSW	18	14	1.8	4	95	45	0.5
	1200			28	1006	S	22	17	1.8	4	87	66	0.7
	1800			26	1005	W	12	08	2.0	4	91	45	0.5
03-05-26 (Sunday)	0001	29	22	25	1007	S	22	16	2.0	4	90	34	0.4
	0600			26	1008	SW	24	18	2.0	4	91	92	2.5
	1200			28	1006	SW	16	12	2.0	4	88	96	3.5
	1800			26	1005	SSE	26	18	2.0	4	93	43	0.6
04-05-26 (Monday)	0001	29	23	25	1010	SSW	25	18	1.9	4	90	52	0.5
	0600			26	1011	SSW	20	15	1.8	4	95	74	0.8
	1200			28	1009	SE	22	16	1.8	4	86	69	0.7
	1800			26	1008	SSW	16	12	1.6	4	88	15	0.0
05-05-26 (Tuesday)	0001	29	23	25	1011	SSW	18	14	1.6	4	92	34	0.1
	0600			26	1013	SSW	14	10	1.5	4	93	24	0.3
	1200			28	1010	SSW	14	10	1.4	4	79	13	0.0
	1800			26	1009	SSW	17	13	1.3	4	86	16	0.0

02 May 2026

03 May 2026

04 May 2026

05 May 2026



Significant wave height (m)



# MARINE WEATHER FORECAST (02 to 09 May 2026)

## MONGLA FAIRWAY (21° 26' N, 089° 34' E)



Date	Time	Air Temp (°C)		Sea Surface Temp (°C)	Baro Pressure (mbar)	Wind Direction	Wind Spd (kts)		Wave Ht (m)	Sea State	Humidity (%)	Prob of Rain (%)	Amount of Rain (mm)
		Max	Min				Gusting	Avg					
06-05-26 (Wednesday)	0001	29	23	25	1009	SW	14	10	1.6	4	92	32	0.3
	0600			26	1010	SSW	26	18	1.5	4	93	37	0.4
	1200			28	1008	SSW	17	13	1.3	4	81	18	0.0
	1800			26	1007	SSW	16	12	1.4	4	85	10	0.0
07-05-26 (Thursday)	0001	30	24	25	1008	SW	14	10	1.1	3	92	59	0.6
	0600			26	1009	SW	15	11	1.1	3	93	43	0.5
	1200			28	1007	E	10	06	1.0	3	80	15	0.0
	1800			26	1006	SW	14	10	1.0	3	87	37	0.4
08-05-26 (Friday)	0001	30	24	25	1008	S	13	09	1.0	3	90	53	0.5
	0600			26	1009	SW	12	08	1.0	3	94	45	0.5
	1200			28	1007	SW	08	05	1.0	3	85	21	0.1
	1800			26	1006	S	11	07	1.1	3	88	34	0.3
09-05-26 (Saturday)	0001	30	24	25	1008	NW	10	05	0.9	3	86	53	0.5
	0600			26	1009	W	11	06	0.9	3	90	45	0.5
	1200			28	1007	W	07	04	0.9	3	84	21	0.1
	1800			26	1006	SSW	09	05	0.9	3	87	34	0.3

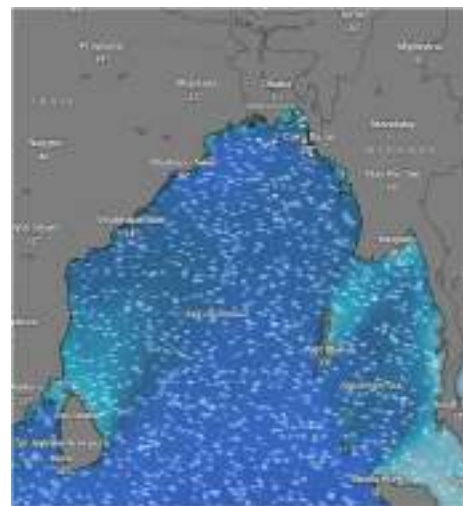
06 May 2026



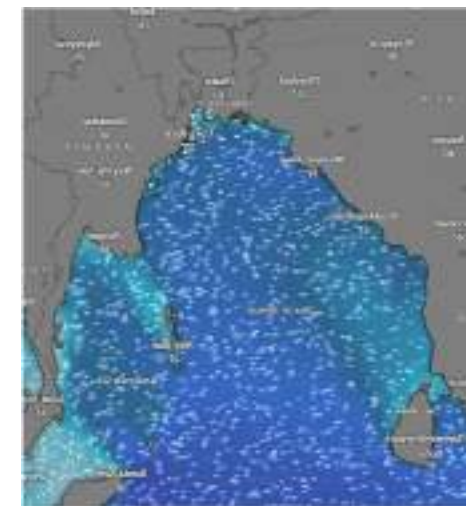
07 May 2026



08 May 2026



09 May 2026



Significant wave height (m)



# MARINE WEATHER FORECAST (02 to 09 May 2026)

## OUTER EEZ (18° 48' N, 090° 30' E)



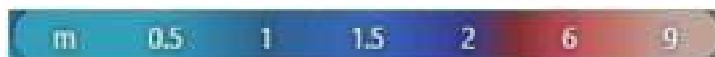
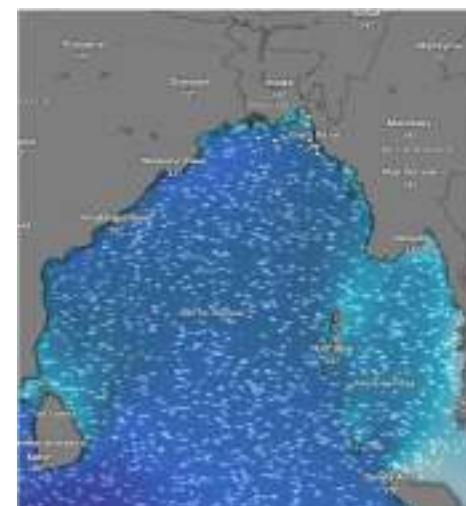
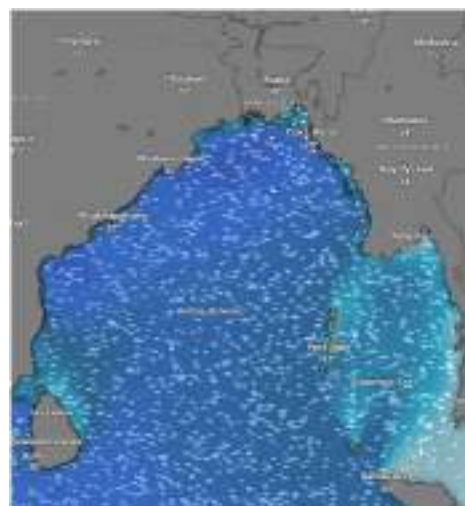
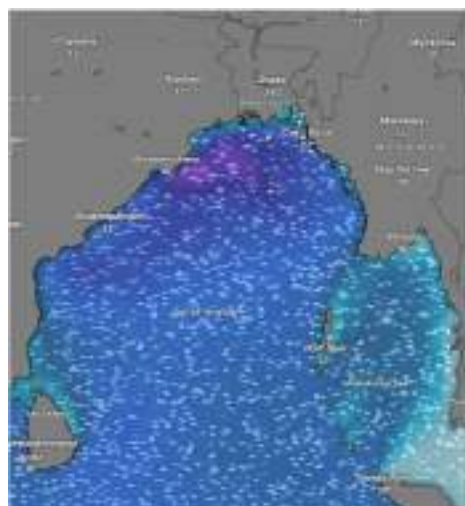
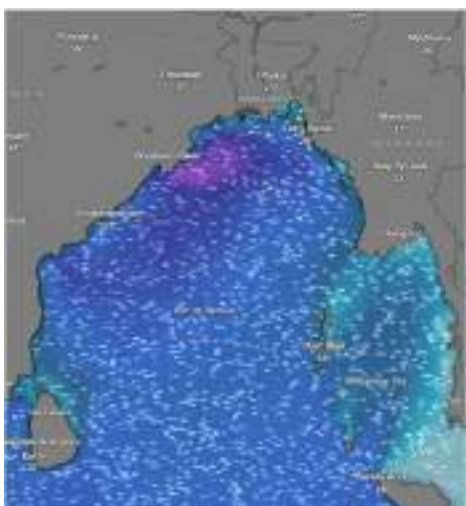
Date	Time	Air Temp (°C)		Sea Surface Temp (°C)	Baro Pressure (mbar)	Wind Direction	Wind Spd (kts)		Wave Ht (m)	Sea State	Humidity (%)	Prob of Rain (%)	Amount of Rain (mm)
		Max	Min				Gusting	Avg					
02-05-26 (Saturday)	0001	29	22	25	1007	SSW	22	16	1.6	4	90	94	2.5
	0600			26	1008	SSW	17	13	1.7	4	91	45	0.5
	1200			28	1006	SW	23	17	1.7	4	74	66	0.7
	1800			26	1005	SSW	27	20	2.1	4	86	45	0.5
03-05-26 (Sunday)	0001	29	22	25	1007	SW	11	07	2.1	4	90	34	0.4
	0600			26	1008	SSW	20	15	1.9	4	92	95	2.5
	1200			28	1006	SSW	22	16	2.0	4	75	96	3.5
	1800			26	1005	SSW	15	11	1.8	4	87	48	0.6
04-05-26 (Monday)	0001	29	23	25	1010	SW	11	07	1.7	4	89	32	0.2
	0600			26	1011	SSW	22	16	1.7	4	91	28	0.1
	1200			28	1009	SSW	15	11	1.5	4	75	22	0.1
	1800			26	1008	SSW	12	08	1.5	4	88	25	0.1
05-05-26 (Tuesday)	0001	29	23	25	1011	SSW	22	14	1.5	4	90	40	0.4
	0600			26	1013	W	20	16	1.5	4	92	52	0.5
	1200			28	1010	SW	21	11	1.4	4	83	24	0.1
	1800			26	1009	SSW	15	10	1.4	4	86	34	0.3

02 May 2026

03 May 2026

04 May 2026

05 May 2026



Significant wave height (m)



# MARINE WEATHER FORECAST (02 to 09 May 2026)

## OUTER EEZ (18° 48' N, 090° 30' E)



Date	Time	Air Temp (°C)		Sea Surface Temp (°C)	Baro Pressure (mbar)	Wind Direction	Wind Spd (kts)		Wave Ht (m)	Sea State	Humidity (%)	Prob of Rain (%)	Amount of Rain (mm)
		Max	Min				Gusting	Avg					
06-05-26 (Wednesday)	0001	29	23	25	1009	SW	12	08	1.2	3	89	12	0.0
	0600			26	1010	SSW	13	09	1.2	3	90	24	0.1
	1200			28	1008	SW	14	10	1.1	3	74	10	0.0
	1800			26	1007	SW	13	09	1.2	3	87	20	0.0
07-05-26 (Thursday)	0001	30	24	25	1008	SW	13	09	1.1	3	90	12	0.0
	0600			26	1009	W	11	07	1.0	3	93	24	0.1
	1200			28	1007	W	09	05	1.1	3	82	10	0.0
	1800			26	1006	SW	12	08	1.1	3	87	20	0.0
08-05-26 (Friday)	0001	30	24	25	1008	SW	14	10	1.2	3	90	32	0.3
	0600			26	1009	W	13	09	1.2	3	92	22	0.0
	1200			28	1007	W	11	07	1.2	3	85	15	0.0
	1800			26	1006	W	12	08	1.2	3	89	22	0.0
09-05-26 (Saturday)	0001	30	24	25	1008	SW	09	05	1.1	3	90	36	0.4
	0600			26	1009	W	12	08	1.1	3	92	41	0.4
	1200			28	1007	W	10	06	1.1	3	85	22	0.0
	1800			26	1006	W	11	07	1.0	3	89	24	0.1

06 May 2026



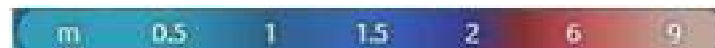
07 May 2026



08 May 2026



09 May 2026



Significant wave height (m)



## PREDICTED SURFACE PRESSURE FORECAST (02 to 08 May 2026)



02 May 2026



03 May 2026



04 May 2026



05 May 2026



06 May 2026



07 May 2026



08 May 2026

