



SUMMARY OF MARINE WEATHER FORECAST

COASTAL AREA OF BANGLADESH

DATE: 01 TO 08 AUG 2024



Fleet forecast	Due to strong monsoon deep convection is taking place and steep pressure gradient observed over North Bay. Maritime ports of Chattogram, Cox's Bazar, Mongla and Payra have been advised to hoist local cautionary signal no-3
Wind direction, speed	South/south-easterly 16 kts, (Temporary gusting up to 22 kts).
Wave height & sea state	Wave height: 0.2 to 2.8 m (Sea state:1 to 5).
Sea surface temperature	27°C - 29°C (May remain nearly unchanged).
Baro pressure	999 - 1009 mb
Rainfall	Light to moderate rain/thunder showers over Bay of Bengal & adjoining area with moderately heavy to very heavy falls at place over Barishal, Chattogram and Sylhet divisions.

Outlook for 01 to 08 Aug 2024: Rainfall activity may increase initially and decrease at the end of said period.

MARINE WEATHER FORECAST- NEAR AUTHORITY BUOY (Lat 22° 12'N, Long 091° 38'E)

DATE : 01 to 07 Aug 2024

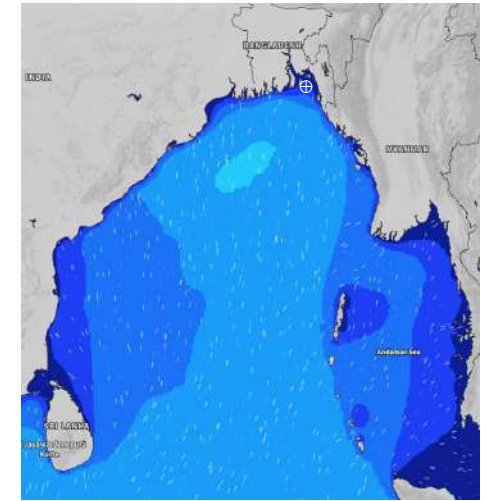
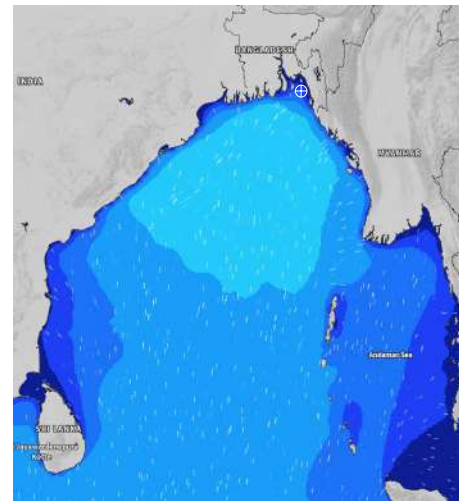
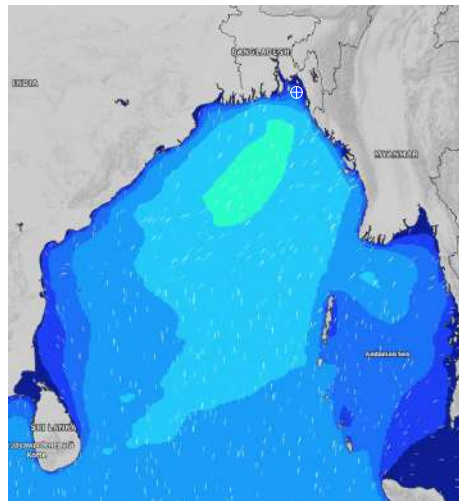
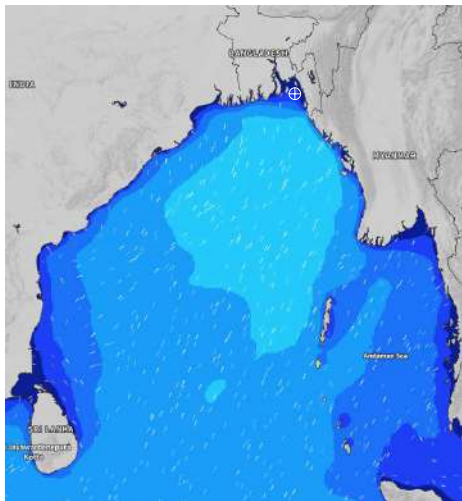
Date	Time	Max Wind Spd (kts)	Wind Direction	Wave Ht (m)	Sea State	Baro Pressure	Air Temp		Sea Surface Temp	Humidity (%)	Prob of Rain (%)	Sea State	Wave Ht (m)
							Max	Min					
01-08-24	0001	21	SSE	0.5	2	1001	29	26	27	92%	99% (6.5 mm)	0	0
	0600	20	SSE	0.5	2	1001			26	94%	99% (7.8 mm)	1	0 - 0.1
	1200	21	SSE	0.5	2	1002			27	90%	98% (6.9 mm)	2	0.1 - 0.5
	1800	20	S	0.6	3	1001			27	92%	95% (5.4 mm)	3	0.5 - 1.25
02-08-24	0001	22	SSE	0.6	3	1003	29	26	27	92%	94% (2.9 mm)	4	1.25 - 2.5
	0600	22	SSE	0.6	3	1003			26	96%	85% (1.8 mm)	5	2.5 - 4.0
	1200	19	SSE	0.5	2	1004			27	91%	83% (1.7 mm)	6	4.0 - 6.0
	1800	22	SSE	0.5	2	1003			27	94%	62% (0.8 mm)	7	6.0 - 9.0
03-08-24	0001	19	SSE	0.5	2	1005	29	26	27	93%	83% (1.3 mm)	8	9.0 - 14.0
	0600	18	SE	0.4	2	1005			26	95%	88% (1.2 mm)	9	Over 14.0
	1200	19	SSE	0.4	2	1006			27	90%	80% (1.2 mm)		
	1800	18	SSE	0.4	2	1005			27	92%	58% (0.7 mm)		
04-08-24	0001	16	SSE	0.4	2	1007	29	26	27	95%	59% (0.6 mm)		
	0600	15	SSE	0.4	2	1006			26	96%	78% (0.8 mm)		
	1200	16	SE	0.4	2	1007			27	91%	79% (0.9 mm)		
	1800	15	SSE	0.4	2	1006			27	92%	39% (0.4 mm)		

01 Aug 24 Thu (Probability 98%)

02 Aug 24 Fri (Probability 95%)

03 Aug 24 Sat (Probability 90%)

04 Aug 24 Sun (Probability 80%)



Significant wave height (m)

MARINE WEATHER FORECAST- NEAR AUTHORITY BUOY (Lat 22° 12'N, Long 091° 38'E)

DATE : 01 to 07 Aug 2024

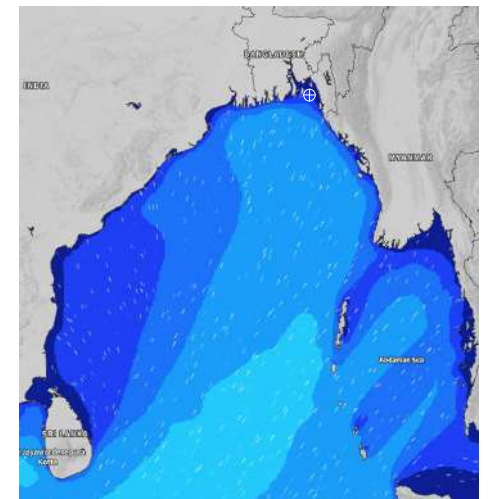
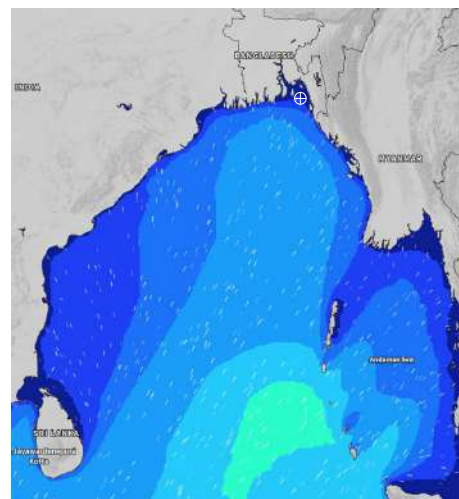
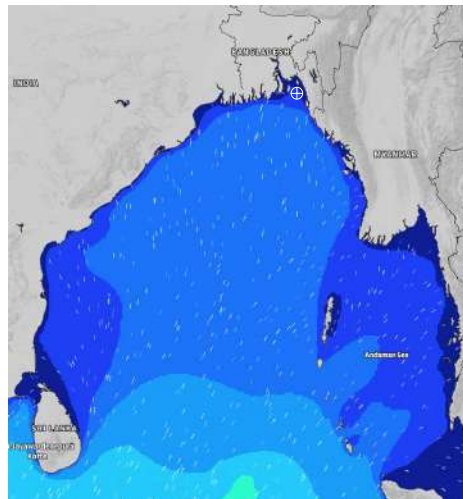
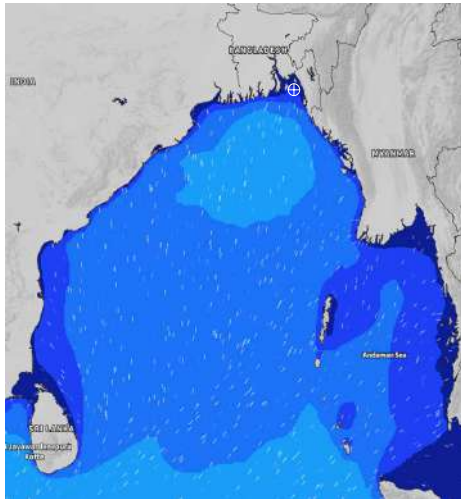
Date	Time	Max Wind Spd (kts)	Wind Direction	Wave Ht (m)	Sea State	Baro Pressure	Air Temp		Sea Surface Temp	Humidity (%)	Prob of Rain (%)	Sea State	Wave Ht (m)
							Max	Min					
05-08-24	0001	17	SSE	0.4	2	1007	30	26	27	91%	54% (0.5 mm)	0	0
	0600	14	SSE	0.3	2	1007			26	94%	82% (0.8 mm)	1	0 - 0.1
	1200	15	S	0.3	2	1008			27	84%	88% (0.9 mm)	2	0.1 - 0.5
	1800	14	S	0.3	2	1006			28	88%	40% (0.4 mm)	3	0.5 - 1.25
06-08-24	0001	14	SSE	0.3	2	1008	30	26	27	90%	62% (0.6 mm)	4	1.25 - 2.5
	0600	13	SE	0.3	2	1008			28	93%	79% (0.8 mm)	5	2.5 - 4.0
	1200	14	S	0.4	2	1007			27	81%	77% (0.8 mm)	6	4.0 - 6.0
	1800	15	S	0.3	2	1006			28	87%	46% (0.4 mm)	7	6.0 - 9.0
07-08-24	0001	14	SSE	0.3	2	1007	30	26	27	89%	71% (0.7 mm)	8	9.0 - 14.0
	0600	17	SSE	0.4	2	1007			27	94%	75% (0.7 mm)	9	Over 14.0
	1200	14	SSW	0.4	2	1008			27	83%	73% (0.7 mm)		
	1800	9	S	0.2	2	1006			28	90%	70% (0.7 mm)		
08-08-24	0001	12	S	0.3	2	1008	30	26	27	89%	68% (0.7 mm)		
	0600	12	SSE	0.2	2	1007			27	91%	66% (0.6 mm)		
	1200	13	SSE	0.3	2	1008			28	79%	63% (0.6 mm)		
	1800	16	SSE	0.3	2	1007			28	87%	61% (0.6 mm)		

05 Aug 24 Mon (Probability 70%)

06 Aug 24 Tue (Probability 60%)

07 Aug 24 Wed (Probability 50%)

08 Aug 24 Thu (Probability 50%)



Significant wave height (m)

MARINE WEATHER FORECAST- 20 NM WEST OF ELEPHANT POINT (Lat 21° 10'N, Long 091° 42'E)

DATE : 01 to 07 Aug 2024

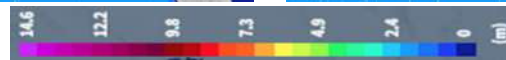
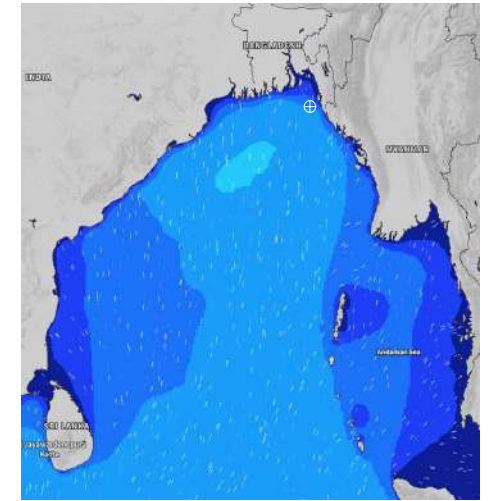
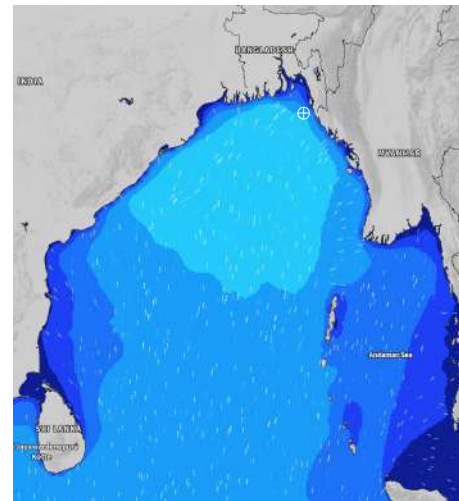
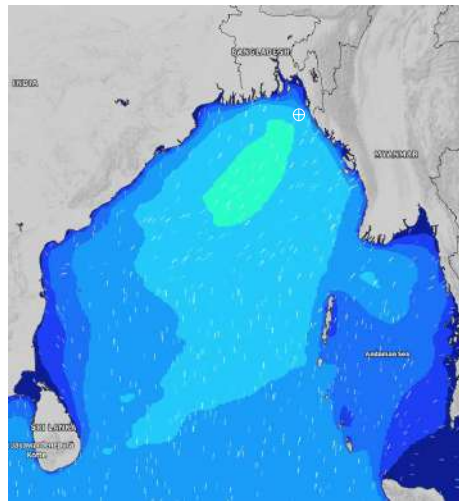
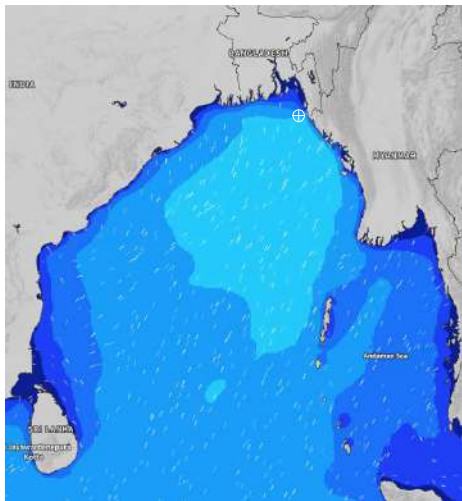
Date	Time	Max Wind Spd (kts)	Wind Direction	Wave Ht (m)	Sea State	Baro Pressure	Air Temp		Sea Surface Temp	Humidity (%)	Prob of Rain (%)	Sea State	Wave Ht (m)
							Max	Min					
01-08-24	0001	18	S	2.0	4	1003	29	26	27	91%	95% (5.6 mm)	0	0
	0600	20	S	2.0	4	1002			27	94%	92% (2.7 mm)	1	0 - 0.1
	1200	21	S	2.1	4	1003			28	90%	96% (5.3 mm)	2	0.1 - 0.5
	1800	22	SSW	2.4	4	1002			27	92%	94% (3.9 mm)	3	0.5 - 1.25
02-08-24	0001	21	SSE	2.3	4	1004	29	26	27	90%	92% (2.8 mm)	4	1.25 - 2.5
	0600	20	SSE	2.1	4	1003			27	94%	84% (1.6 mm)	5	2.5 - 4.0
	1200	19	SSE	2.0	4	1005			28	89%	83% (1.5 mm)	6	4.0 - 6.0
	1800	18	SSE	1.9	4	1004			27	91%	65% (0.7 mm)	7	6.0 - 9.0
03-08-24	0001	19	SSE	1.9	4	1005	29	26	27	92%	81% (1.0 mm)	8	9.0 - 14.0
	0600	19	SSE	1.9	4	1005			27	95%	82% (1.0 mm)	9	Over 14.0
	1200	18	S	1.9	4	1006			28	90%	86% (1.1 mm)		
	1800	19	SSE	1.9	4	1005			27	91%	53% (0.6 mm)		
04-08-24	0001	15	SSE	1.8	4	1007	29	26	27	89%	55% (0.5 mm)		
	0600	17	SE	1.7	4	1006			27	94%	74% (0.7 mm)		
	1200	18	SSE	1.7	4	1007			28	89%	76% (0.7 mm)		
	1800	16	SE	1.7	4	1006			27	90%	35% (0.4 mm)		

01 Aug 24 Thu (Probability 98%)

02 Aug 24 Fri (Probability 95%)

03 Aug 24 Sat (Probability 90%)

04 Aug 24 Sun (Probability 80%)



Significant wave height (m)

MARINE WEATHER FORECAST- 20 NM WEST OF ELEPHANT POINT (Lat 21° 10'N, Long 091° 42' E)

DATE : 01 to 07 Aug 2024

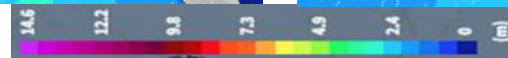
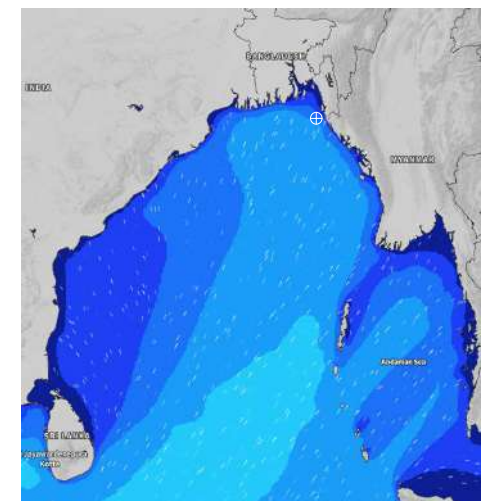
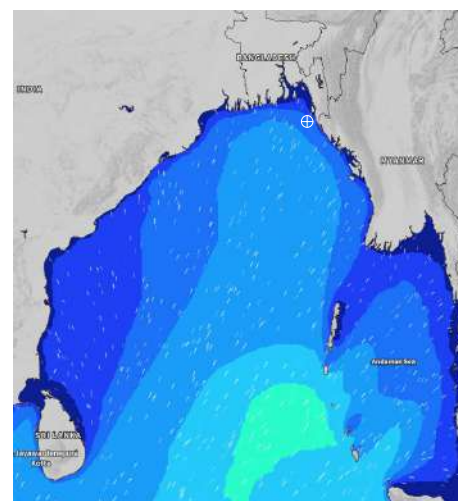
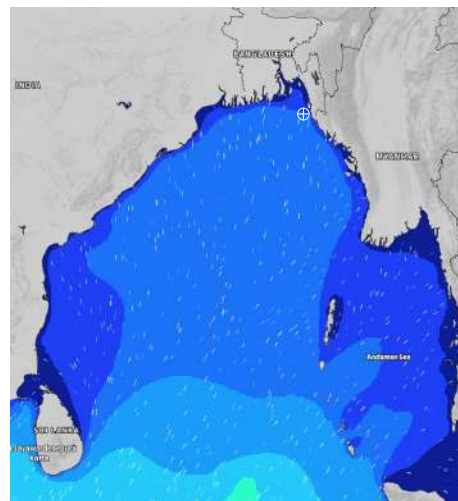
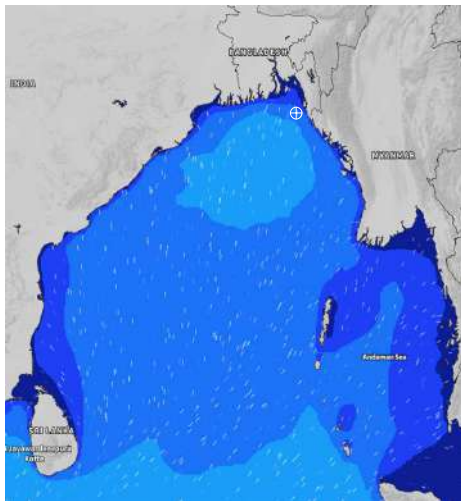
Date	Time	Max Wind Spd (kts)	Wind Direction	Wave Ht (m)	Sea State	Baro Pressure	Air Temp		Sea Surface Temp	Humidity (%)	Prob of Rain (%)	Sea State	Wave Ht (m)
							Max	Min					
05-08-24	0001	14	SSE	1.5	4	1008	29	26	27	91%	51% (0.5 mm)	0	0
	0600	13	SE	1.4	4	1007			27	94%	83% (0.8 mm)	1	0 - 0.1
	1200	10	S	1.4	4	1008			28	90%	82% (0.8 mm)	2	0.1 - 0.5
	1800	12	SSW	1.6	4	1006			28	91%	44% (0.4 mm)	3	0.5 - 1.25
06-08-24	0001	13	S	1.5	4	1008	29	26	27	90%	65% (0.6 mm)	4	1.25 - 2.5
	0600	16	SE	1.5	4	1007			27	94%	72% (0.7 mm)	5	2.5 - 4.0
	1200	9	SSE	1.4	4	1007			28	89%	73% (0.7 mm)	6	4.0 - 6.0
	1800	12	SSW	1.3	4	1006			28	90%	45% (0.4 mm)	7	6.0 - 9.0
07-08-24	0001	14	S	1.3	4	1007	29	26	28	90%	76% (0.7 mm)	8	9.0 - 14.0
	0600	13	S	1.4	4	1007			27	93%	72% (0.7 mm)	9	Over 14.0
	1200	15	SW	1.5	4	1008			28	88%	74% (0.7 mm)		
	1800	13	SSW	1.6	4	1006			28	89%	73% (0.7 mm)		
08-08-24	0001	12	SSW	1.5	4	1008	29	26	28	91%	65% (0.6 mm)		
	0600	8	SSW	1.4	4	1007			27	94%	60% (0.6 mm)		
	1200	9	SW	1.4	4	1008			28	87%	61% (0.6 mm)		
	1800	11	SSW	1.4	4	1007			28	89%	62% (0.6 mm)		

05 Aug 24 Mon (Probability 70%)

06 Aug 24 Tue (Probability 60%)

07 Aug 24 Wed (Probability 50%)

08 Aug 24 Thu (Probability 50%)



Significant wave height (m)

MARINE WEATHER FORECAST- 15 NM WEST OF ST. MARTIN'S LIGHT HOUSE (Lat 20° 37'N, Long 092° 03' E)

DATE : 01 to 07 Aug 2024

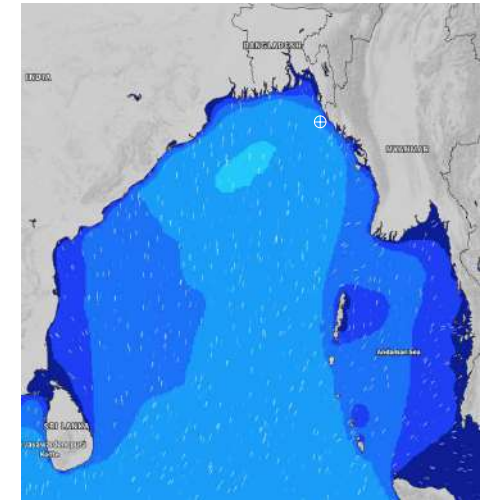
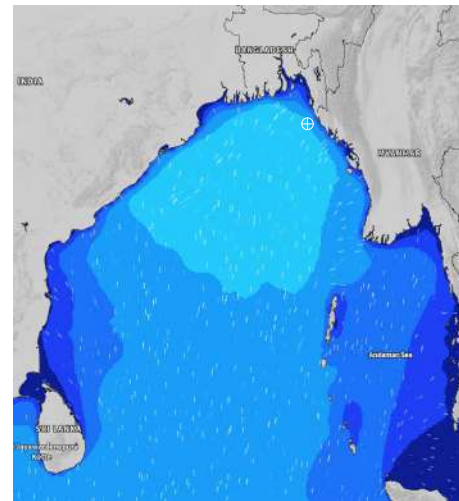
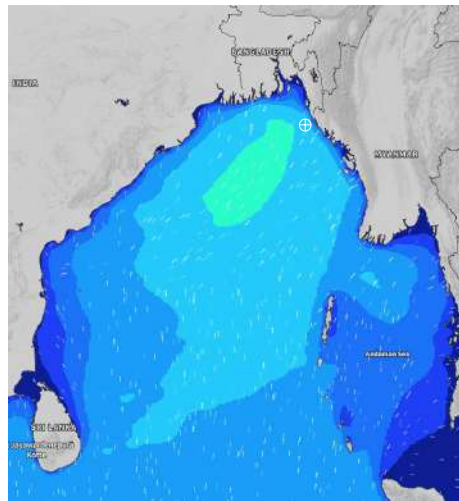
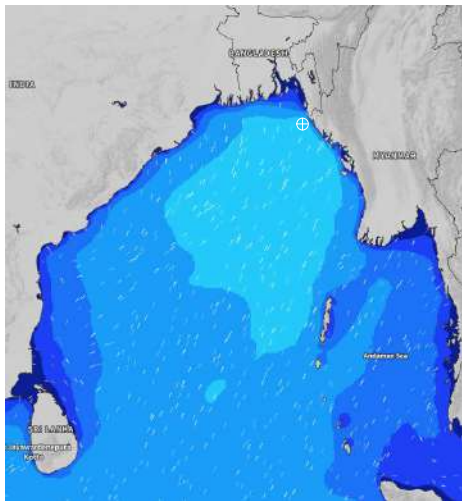
Date	Time	Max Wind Spd (kts)	Wind Direction	Wave Ht (m)	Sea State	Baro Pressure	Air Temp		Sea Surface Temp	Humidity (%)	Prob of Rain(%)	Sea State	Wave Ht (m)
							Max	Min					
01-08-24	0001	18	SSW	2.2	4	1004	29	26	27	91%	94% (5.2 mm)	0	0
	0600	17	S	2.2	4	1002			27	93%	92% (2.5 mm)	1	0 - 0.1
	1200	19	SSW	2.3	4	1004			28	89%	98% (5.5 mm)	2	0.1 - 0.5
	1800	20	SSW	2.7	5	1003			27	90%	93% (3.8 mm)	3	0.5 - 1.25
02-08-24	0001	16	SSE	2.5	4	1005	29	26	27	92%	92% (2.9 mm)	4	1.25 - 2.5
	0600	16	SSE	2.3	4	1004			27	94%	84% (1.8 mm)	5	2.5 - 4.0
	1200	15	S	2.1	4	1005			28	86%	86% (1.7 mm)	6	4.0 - 6.0
	1800	12	S	2.2	4	1004			27	89%	68% (0.8 mm)	7	6.0 - 9.0
03-08-24	0001	15	SSE	2.2	4	1006	29	26	27	90%	87% (1.3 mm)	8	9.0 - 14.0
	0600	14	S	2.2	4	1005			27	93%	84% (1.2 mm)	9	Over 14.0
	1200	16	S	2.2	4	1007			28	81%	85% (1.2 mm)		
	1800	17	S	2.2	4	1005			27	89%	56% (0.7 mm)		
04-08-24	0001	17	S	2.2	4	1008	29	26	27	91%	58% (0.6 mm)		
	0600	14	S	2.1	4	1006			27	94%	77% (0.8 mm)		
	1200	12	SSE	2.2	4	1007			28	87%	75% (0.9 mm)		
	1800	13	SSE	2.0	4	1006			27	89%	36% (0.4 mm)		

01 Aug 24 Thu (Probability 98%)

02 Aug 24 Fri (Probability 95%)

03 Aug 24 Sat (Probability 90%)

04 Aug 24 Sun (Probability 80%)



Significant wave height (m)

MARINE WEATHER FORECAST- 15 NM WEST OF ST. MARTIN'S LIGHT HOUSE (Lat 20° 37'N, Long 092° 03'E)

DATE : 01 to 07 Aug 2024

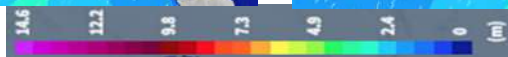
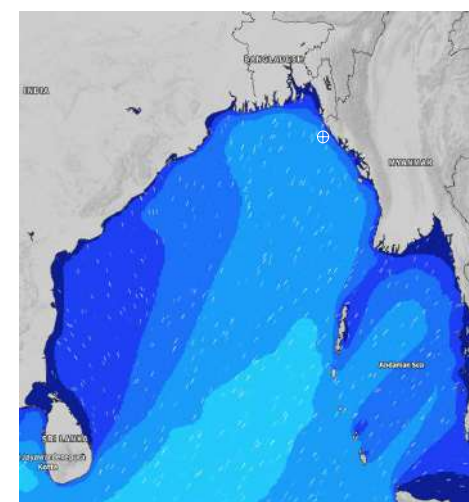
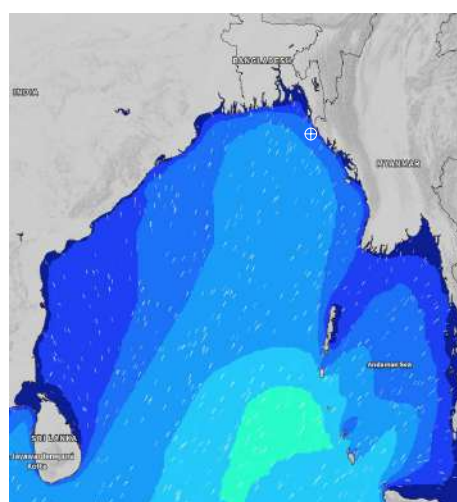
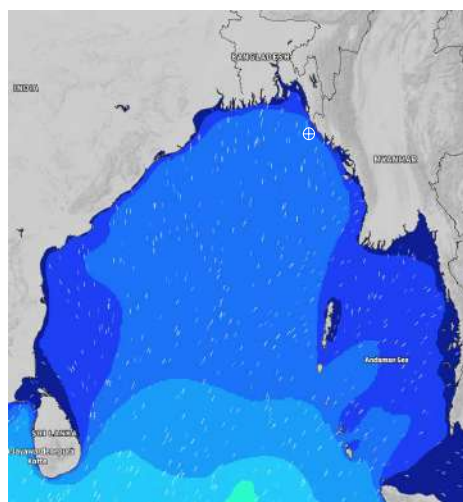
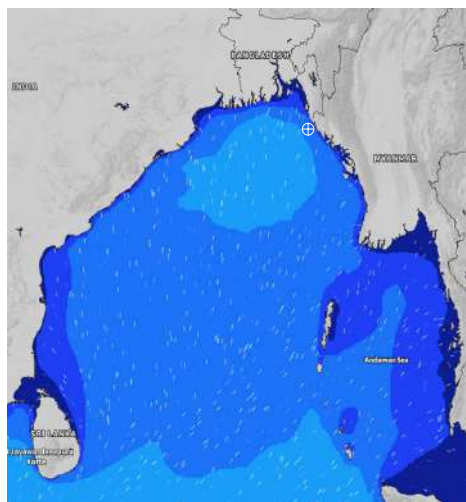
Date	Time	Max Wind Spd (kts)	Wind Direction	Wave Ht (m)	Sea State	Baro Pressure	Air Temp		Sea Surface Temp	Humidity (%)	Prob of Rain (%)	Sea State	Wave Ht (m)
							Max	Min					
05-08-24	0001	10	S	1.8	4	1008	29	26	27	89%	41% (0.4 mm)	0	0
	0600	10	SW	1.7	4	1007			27	93%	65% (0.6 mm)	1	0 - 0.1
	1200	13	SSW	1.9	4	1008			28	76%	62% (0.6 mm)	2	0.1 - 0.5
	1800	11	SSW	1.9	4	1007			27	87%	53% (0.5 mm)	3	0.5 - 1.25
06-08-24	0001	14	SSW	1.8	4	1009	30	26	28	88%	65% (0.6 mm)	4	1.25 - 2.5
	0600	10	SSW	1.7	4	1007			27	95%	74% (0.7 mm)	5	2.5 - 4.0
	1200	13	SE	1.6	4	1008			28	74%	76% (0.7 mm)	6	4.0 - 6.0
	1800	14	SSW	1.6	4	1006			28	88%	72% (0.8 mm)	7	6.0 - 9.0
07-08-24	0001	12	SSW	1.5	4	1008	30	26	28	87%	64% (0.6 mm)	8	9.0 - 14.0
	0600	15	SSW	1.7	4	1007			27	94%	61% (0.6 mm)	9	Over 14.0
	1200	15	SW	1.8	4	1009			28	72%	65% (0.6 mm)		
	1800	14	SW	1.8	4	1006			28	85%	52% (0.5 mm)		
08-08-24	0001	11	SSW	1.7	4	1009	30	26	28	83%	64% (0.6 mm)		
	0600	11	SSW	1.8	4	1007			27	90%	63% (0.6 mm)		
	1200	9	SSW	1.7	4	1008			28	72%	66% (0.6 mm)		
	1800	10	SW	1.8	4	1007			28	84%	55% (0.5 mm)		

05 Aug 24 Mon (Probability 70%)

06 Aug 24 Tue (Probability 60%)

07 Aug 24 Wed (Probability 50%)

08 Aug 24 Thu (Probability 50%)



Significant wave height (m)

MARINE WEATHER FORECAST- 40 NM ESE OF PAYRA FAIRWAY (Lat 21° 07' N, Long 090° 45' E)

DATE : 01 to 07 Aug 2024

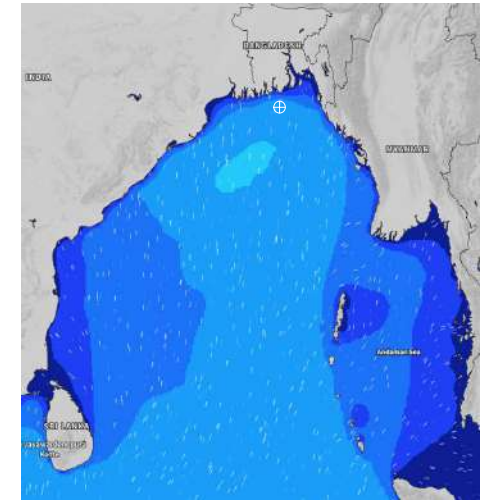
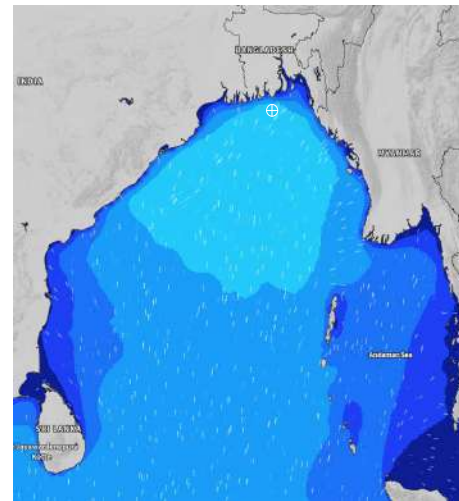
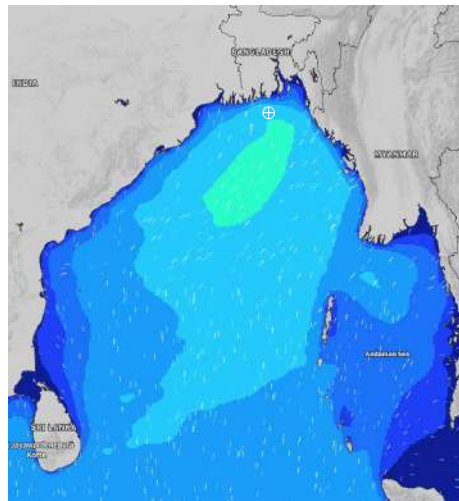
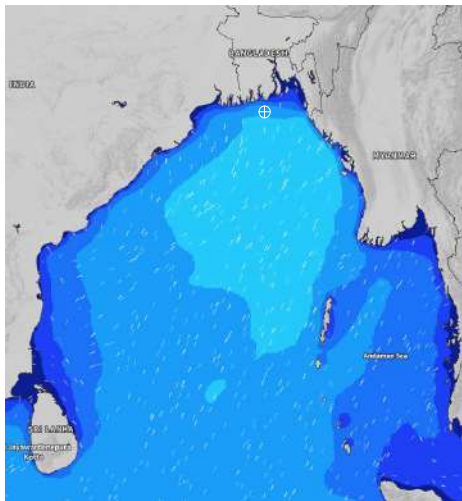
Date	Time	Max Wind Spd (kts)	Wind Direction	Wave Ht (m)	Sea State	Baro Pressure	Air Temp		Sea Surface Temp	Humidity (%)	Prob of Rain (%)	Sea State	Wave Ht (m)
							Max	Min					
01-08-24	0001	17	SW	2.3	4	1002	29	26	27	92%	94% (4.5 mm)	0	0
	0600	18	SW	2.1	4	1001			28	96%	92% (4.5 mm)	1	0 - 0.1
	1200	19	SW	2.4	4	1001			28	89%	97% (3.9 mm)	2	0.1 - 0.5
	1800	20	SSW	2.8	5	1000			28	90%	76% (1.4 mm)	3	0.5 - 1.25
02-08-24	0001	21	S	2.7	5	1003	29	26	28	91%	85% (2.2 mm)	4	1.25 - 2.5
	0600	19	S	2.5	4	1002			27	95%	93% (2.6 mm)	5	2.5 - 4.0
	1200	19	SSW	2.5	4	1002			28	88%	96% (2.5 mm)	6	4.0 - 6.0
	1800	17	S	2.4	4	1003			27	90%	65% (0.7 mm)	7	6.0 - 9.0
03-08-24	0001	19	S	2.5	4	1004	29	26	27	92%	84% (0.8 mm)	8	9.0 - 14.0
	0600	19	S	2.5	4	1004			27	94%	98% (1.6 mm)	9	Over 14.0
	1200	20	S	2.5	4	1005			28	87%	87% (0.9 mm)		
	1800	16	SSW	2.4	4	1004			27	89%	44% (0.4 mm)		
04-08-24	0001	16	SSW	2.3	4	1006	29	26	27	92%	86% (0.9 mm)		
	0600	14	SSW	2.1	4	1005			27	95%	96% (1.6 mm)		
	1200	12	SW	2.0	4	1006			28	88%	84% (0.8 mm)		
	1800	13	SSW	2.0	4	1004			27	90%	42% (0.4 mm)		

01 Aug 24 Thu (Probability 98%)

02 Aug 24 Fri (Probability 95%)

03 Aug 24 Sat (Probability 90%)

04 Aug 24 Sun (Probability 80%)



Significant wave height (m)

MARINE WEATHER FORECAST- 40 NM ESE OF PAYRA FAIRWAY (Lat 21° 07' N, Long 090° 45' E)

DATE : 01 to 07 Aug 2024

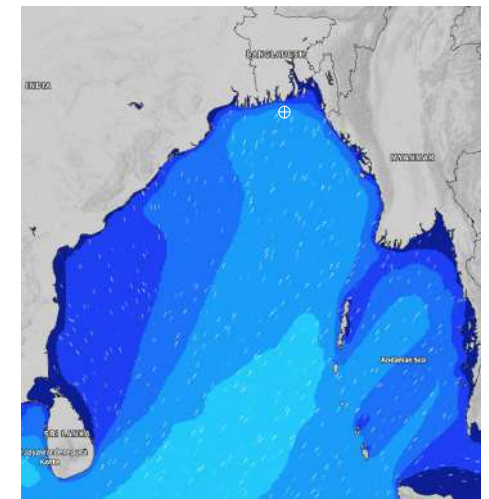
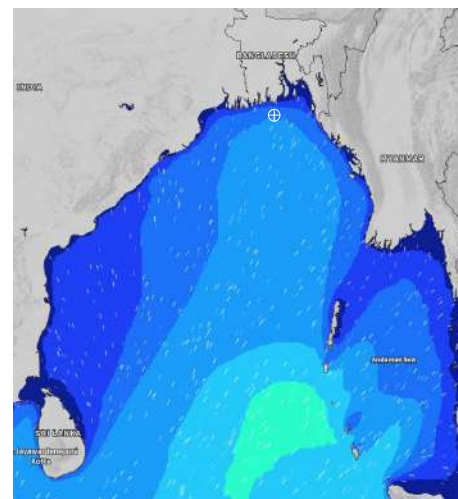
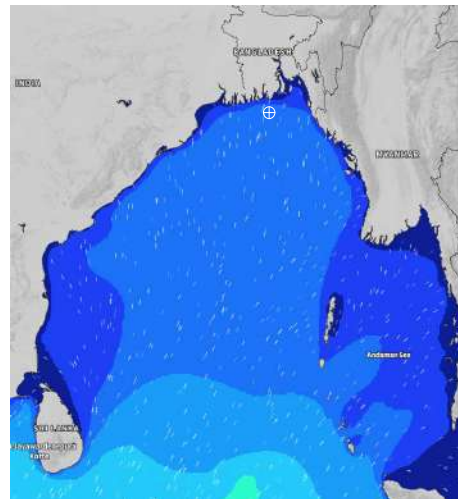
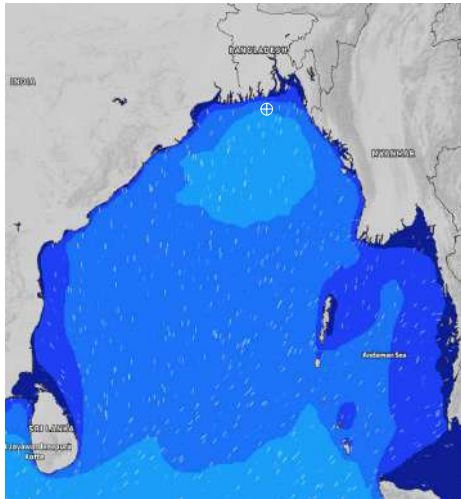
Date	Time	Max Wind Spd (kts)	Wind Direction	Wave Ht (m)	Sea State	Baro Pressure	Air Temp		Sea Surface Temp	Humidity (%)	Prob of Rain (%)	Sea State	Wave Ht (m)
							Max	Min					
05-08-24	0001	13	SSW	1.8	4	1007	29	26	28	91%	66% (0.6 mm)	0	0
	0600	14	SW	1.9	4	1006			27	92%	73% (0.7 mm)	1	0 - 0.1
	1200	19	SSW	2.0	4	1007			28	88%	77% (0.7 mm)	2	0.1 - 0.5
	1800	18	SSW	2.2	4	1006			28	83%	24% (0.1 mm)	3	0.5 - 1.25
06-08-24	0001	14	SSW	2.0	4	1007	29	26	28	90%	75% (0.7 mm)	4	1.25 - 2.5
	0600	8	SSW	1.8	4	1006			27	93%	76% (0.7 mm)	5	2.5 - 4.0
	1200	11	SW	1.7	4	1007			28	87%	75% (0.7 mm)	6	4.0 - 6.0
	1800	15	SSW	1.7	4	1005			29	88%	48% (0.4 mm)	7	6.0 - 9.0
07-08-24	0001	16	SSW	1.7	4	1006	29	26	28	91%	67% (0.6 mm)	8	9.0 - 14.0
	0600	19	SW	2.0	4	1006			27	93%	64% (0.6 mm)	9	Over 14.0
	1200	17	SSW	2.0	4	1007			28	88%	65% (0.6 mm)		
	1800	16	SSW	2.0	4	1006			29	90%	58% (0.6 mm)		
08-08-24	0001	17	SSW	2.1	4	1007	29	26	28	91%	67% (0.7 mm)		
	0600	15	SSW	2.0	4	1006			27	92%	66% (0.7 mm)		
	1200	16	SW	1.9	4	1007			28	79%	68% (0.7 mm)		
	1800	15	SSW	1.9	4	1006			29	85%	57% (0.6 mm)		

05 Aug 24 Mon (Probability 70%)

06 Aug 24 Tue (Probability 60%)

07 Aug 24 Wed (Probability 50%)

08 Aug 24 Thu (Probability 50%)



Significant wave height (m)

MARINE WEATHER FORECAST- 10 NM SOUTH OF MONGLA FAIRWAY (Lat 21° 16'N, Long 089° 34'E)

DATE : 01 to 07 Aug 2024

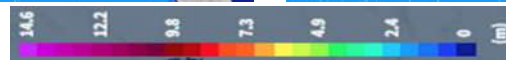
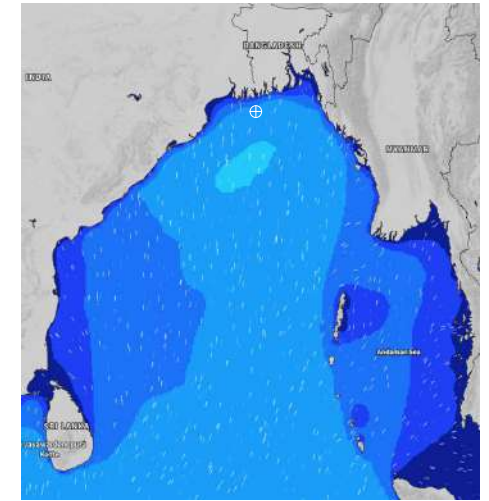
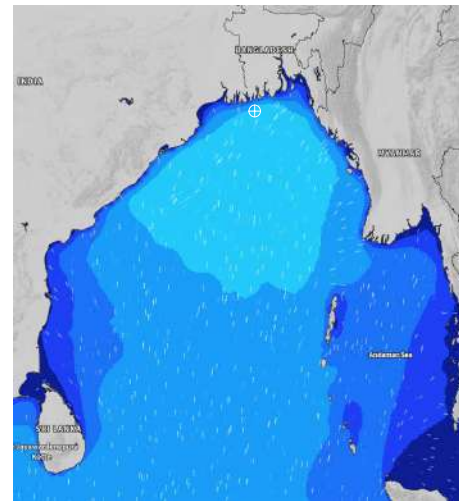
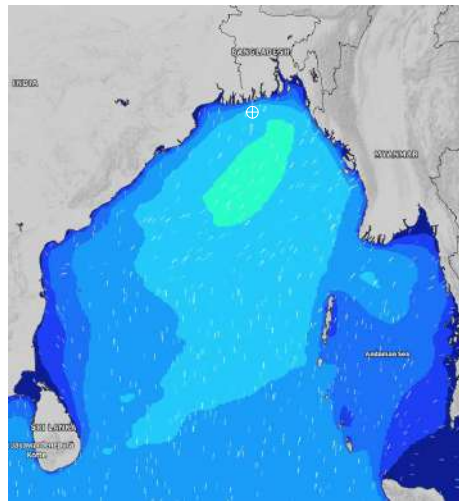
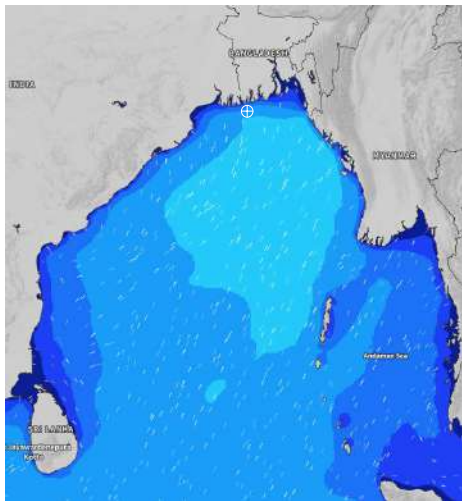
Date	Time	Max Wind Spd (kts)	Wind Direction	Wave Ht (m)	Sea State	Baro Pressure	Air Temp		Sea Surface Temp	Humidity (%)	Prob of Rain (%)	Sea State	Wave Ht (m)
							Max	Min					
01-08-24	0001	19	SW	2.0	4	1001	29	26	28	90%	89% (0.9 mm)	0	0
	0600	12	SW	1.9	4	999			28	92%	99% (2.5 mm)	1	0 - 0.1
	1200	20	SW	2.1	4	1000			29	88%	87% (1.6 mm)	2	0.1 - 0.5
	1800	22	SW	2.6	5	999			28	90%	86% (0.7 mm)	3	0.5 - 1.25
02-08-24	0001	22	SSW	2.6	5	1001	29	26	28	89%	98% (2.7 mm)	4	1.25 - 2.5
	0600	21	SSW	2.7	5	1000			28	93%	97% (2.8 mm)	5	2.5 - 4.0
	1200	20	SSW	2.8	5	1001			29	87%	96% (1.5 mm)	6	4.0 - 6.0
	1800	18	SSW	2.8	5	1000			28	89%	38% (0.4 mm)	7	6.0 - 9.0
03-08-24	0001	20	S	2.8	5	1003	29	26	28	92%	46% (0.5 mm)	8	9.0 - 14.0
	0600	19	SSW	2.8	5	1002			28	94%	58% (0.7 mm)	9	Over 14.0
	1200	19	SSW	2.7	5	1003			29	87%	87% (1.2 mm)		
	1800	18	SSW	2.8	5	1003			28	90%	19% (0.0 mm)		
04-08-24	0001	17	S	2.8	5	1005	29	26	28	92%	46% (0.4 mm)		
	0600	16	SSW	2.8	5	1004			28	94%	58% (0.6 mm)		
	1200	13	SSW	2.7	5	1006			29	76%	87% (1.2 mm)		
	1800	15	SSW	2.8	5	1002			28	89%	19% (0.0 mm)		

01 Aug 24 Thu (Probability 98%)

02 Aug 24 Fri (Probability 95%)

03 Aug 24 Sat (Probability 90%)

04 Aug 24 Sun (Probability 80%)



Significant wave height (m)

MARINE WEATHER FORECAST- 10 NM SOUTH OF MONGLA FAIRWAY (Lat 21° 16'N, Long 089° 34'E)

DATE : 01 to 07 Aug 2024

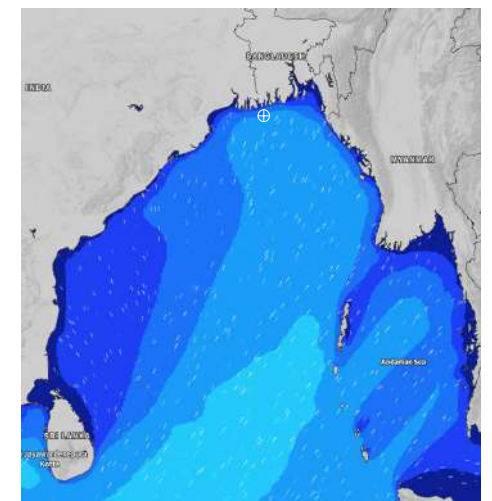
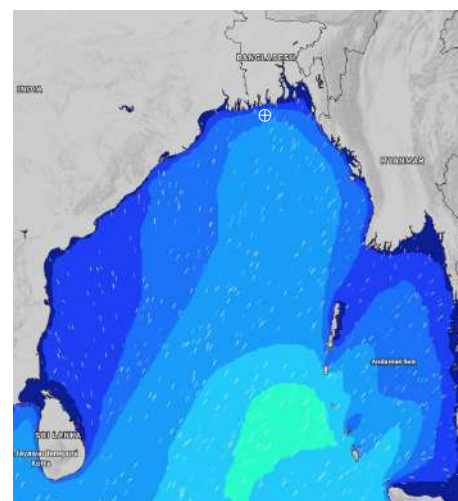
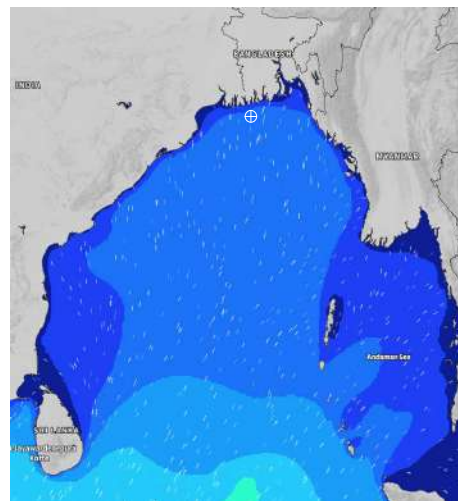
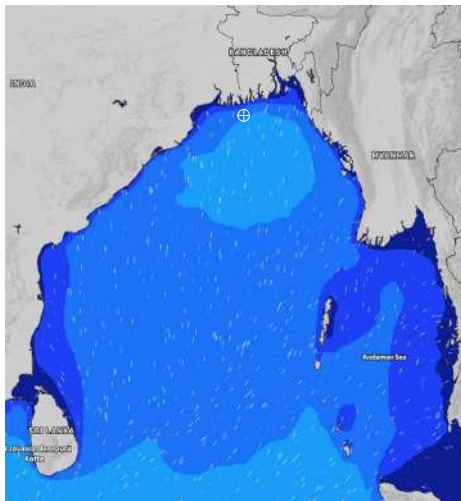
Date	Time	Max Wind Spd (kts)	Wind Direction	Wave Ht (m)	Sea State	Baro Pressure	Air Temp		Sea Surface Temp	Humidity (%)	Prob of Rain (%)	Sea State	Wave Ht (m)
							Max	Min					
05-08-24	0001	17	SSW	1.8	4	1006	30	27	28	89%	36% (0.2 mm)	0	0
	0600	18	SSW	2.0	4	1005			27	93%	37% (0.2 mm)	1	0 - 0.1
	1200	17	SSW	1.6	4	1006			28	79%	88% (0.8 mm)	2	0.1 - 0.5
	1800	13	SSW	1.9	4	1004			29	89%	15% (0.0 mm)	3	0.5 - 1.25
06-08-24	0001	13	SW	1.8	4	1006	30	27	28	90%	43% (0.4 mm)	4	1.25 - 2.5
	0600	10	SW	1.8	4	1005			27	94%	74% (0.7 mm)	5	2.5 - 4.0
	1200	12	SSW	1.7	4	1006			28	85%	76% (0.7 mm)	6	4.0 - 6.0
	1800	13	SSW	1.6	4	1004			29	90%	12% (0.0 mm)	7	6.0 - 9.0
07-08-24	0001	18	SW	1.5	4	1006	30	27	28	92%	44% (0.4 mm)	8	9.0 - 14.0
	0600	18	SW	1.8	4	1007			27	94%	66% (0.6 mm)	9	Over 14.0
	1200	18	SSW	1.9	4	1005			29	78%	62% (0.6 mm)		
	1800	19	SSW	2.0	4	1005			29	90%	24% (0.0 mm)		
08-08-24	0001	19	SSW	2.0	4	1006	30	27	28	89%	42% (0.4 mm)		
	0600	19	SSW	2.1	4	1005			27	93%	65% (0.6 mm)		
	1200	18	SSW	2.1	4	1006			29	81%	63% (0.6 mm)		
	1800	20	SSW	2.1	4	1004			29	89%	21% (0.0 mm)		

05 Aug 24 Mon (Probability 70%)

06 Aug 24 Tue (Probability 60%)

07 Aug 24 Wed (Probability 50%)

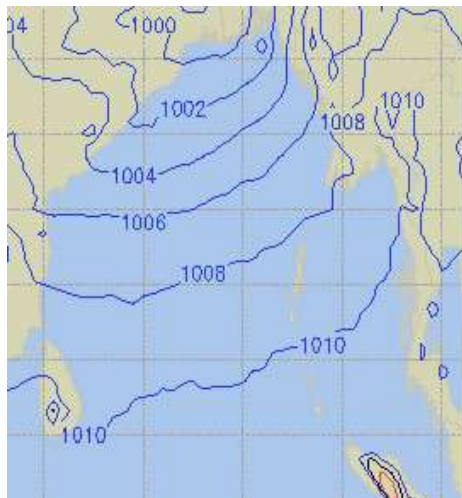
08 Aug 24 Thu (Probability 50%)



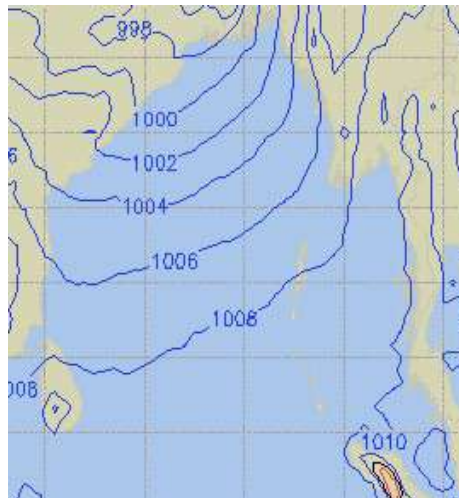
Significant wave height (m)

PREDICTED SURFACE PRESSURE FORECAST (01 to 06 Aug 2024)

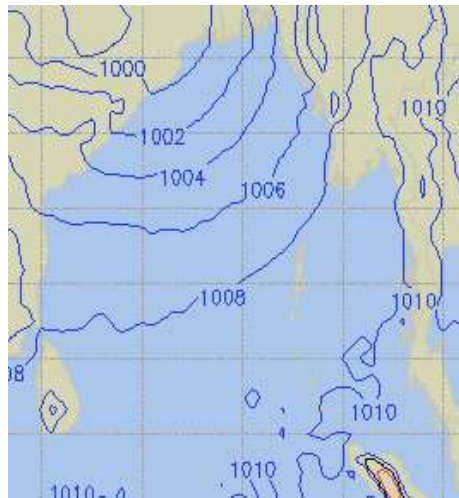
01 Aug 24 Thu (Probability 98%)



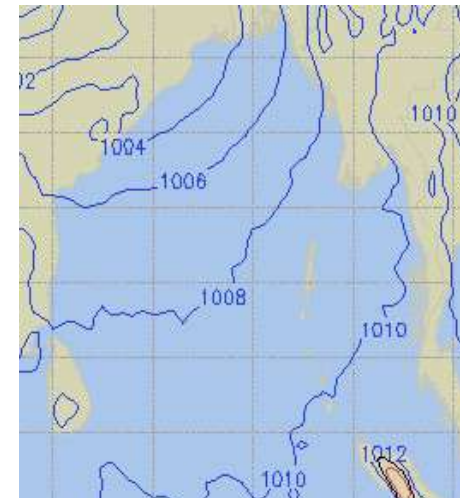
02 Aug 24 Fri (Probability 95%)



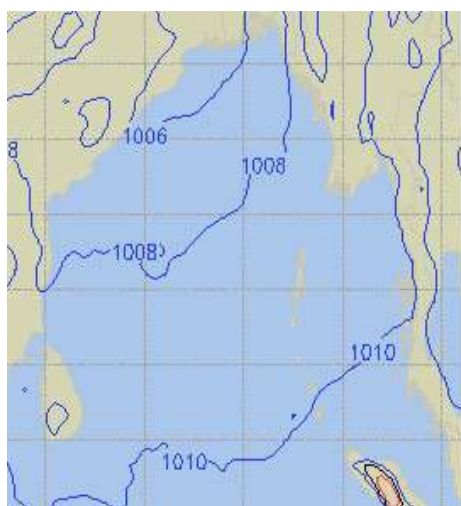
03 Aug 24 Sat (Probability 90%)



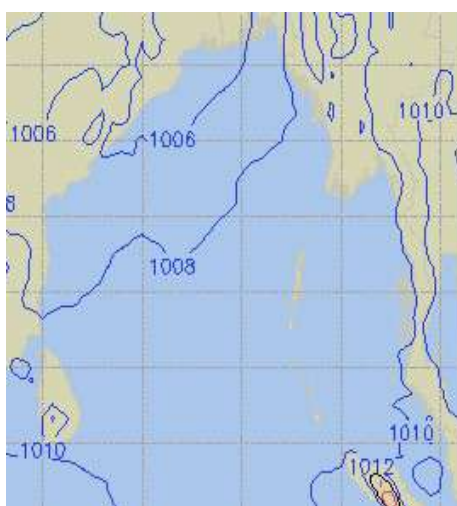
04 Aug 24 Sun (Probability 80%)



05 Aug 24 Mon (Probability 70%)



06 Aug 24 Tue (Probability 60%)



07 Aug 24 Tue (Probability 50%)

