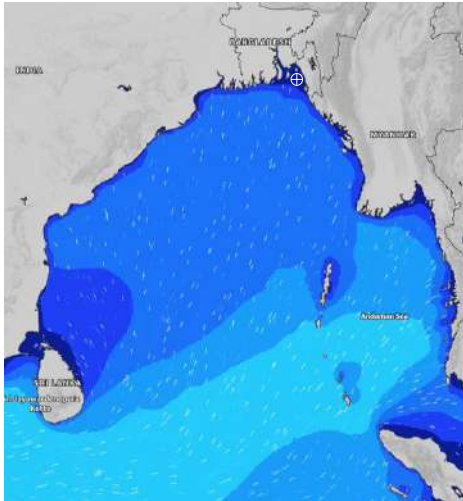


MARINE WEATHER FORECAST- NEAR AUTHORITY BUOY (Lat 22° 12' N, Long 091° 38' E)

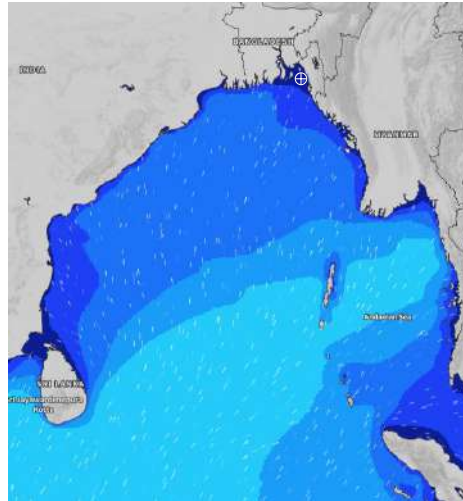
DATE : 01 to 08 June 2024

Date	Time	Max Wind Spd (kts)	Wind Direction	Wave Ht (m)	Sea State	Baro Pressure	Air Temp		Sea Surface Temp	Humidity (%)	Prob of Rain (%)	Sea State	Wave Ht (m)
							Max	Min					
01-06-24	0001	12	SSW	0.2	2	1006	33	28	30	87%	22% (0.0 mm)	0	0
	0600	13	SSE	0.3	2	1005			29	91%	20% (0.0 mm)	1	0 - 0.1
	1200	10	SW	0.2	2	1006			30	82%	18% (0.0 mm)	2	0.1 - 0.5
	1800	11	SW	0.2	2	1005			30	86%	16% (0.0 mm)	3	0.5 - 1.25
02-06-24	0001	14	S	0.3	2	1006	33	28	30	91%	18% (0.0 mm)	4	1.25 - 2.5
	0600	10	SE	0.2	2	1006			29	93%	20% (0.0 mm)	5	2.5 - 4.0
	1200	10	SSW	0.2	2	1007			30	83%	21% (0.0 mm)	6	4.0 - 6.0
	1800	15	SW	0.3	2	1004			29	87%	17% (0.0 mm)	7	6.0 - 9.0
03-06-24	0001	15	SSW	0.3	2	1006	33	28	30	89%	12% (0.0 mm)	8	9.0 - 14.0
	0600	14	SSE	0.3	2	1005			29	92%	14% (0.0 mm)	9	Over 14.0
	1200	14	SSW	0.3	2	1006			30	86%	21% (0.0 mm)		
	1800	17	SSW	0.4	2	1003			29	88%	18% (0.0 mm)		
04-06-24	0001	18	SSE	0.4	2	1005	33	28	30	88%	15% (0.0 mm)		
	0600	19	SSE	0.4	2	1005			29	91%	19% (0.0 mm)		
	1200	15	SSE	0.4	2	1006			30	81%	21% (0.0 mm)		
	1800	17	SSW	0.4	2	1003			29	86%	18% (0.0 mm)		

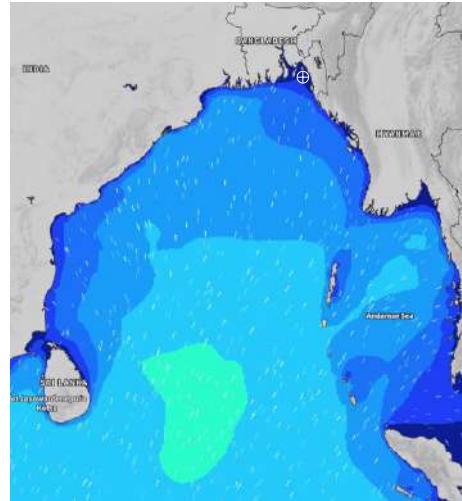
01 June 24 Sat (Probability 98%)



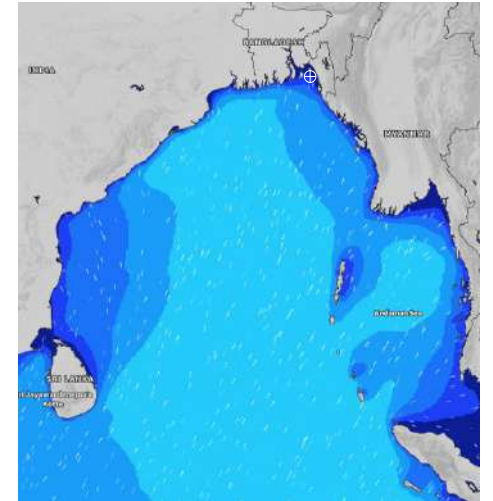
02 June 24 Sun (Probability 95%)



03 June 24 Mon (Probability 90%)



04 June 24 Tue (Probability 80%)



Significant wave height (m)

MARINE WEATHER FORECAST- NEAR AUTHORITY BUOY (Lat 22° 12' N, Long 091° 38' E)

DATE : 01 to 08 June 2024

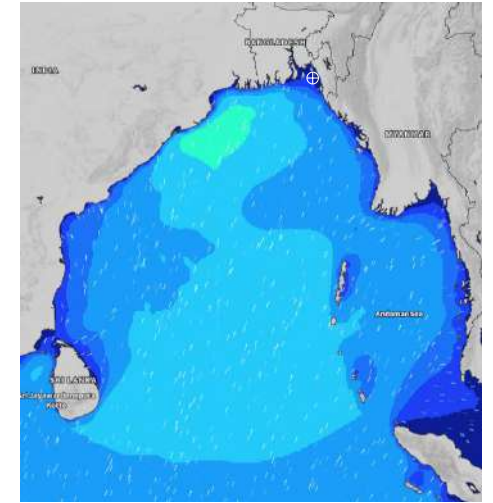
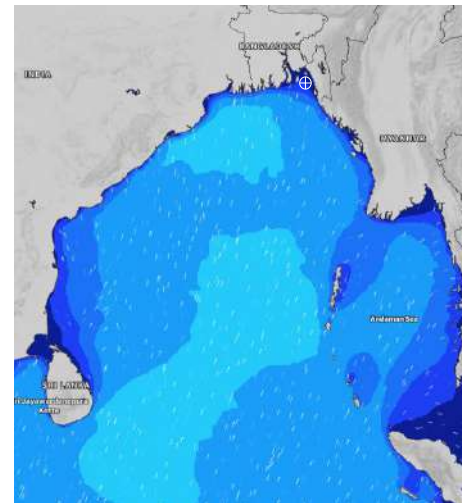
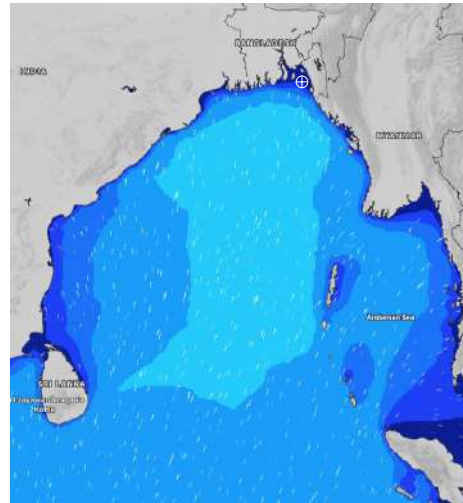
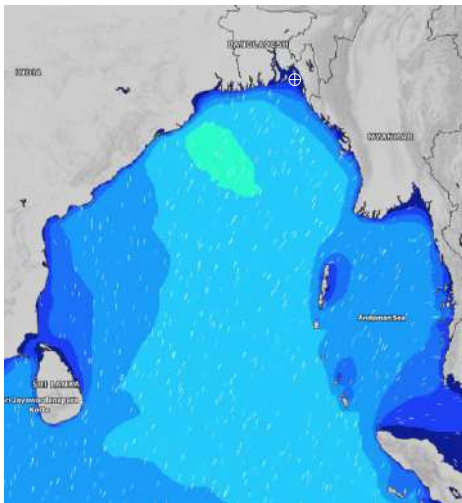
Date	Time	Max Wind Spd (kts)	Wind Direction	Wave Ht (m)	Sea State	Baro Pressure	Air Temp		Sea Surface Temp	Humidity (%)	Prob of Rain (%)	Sea State	Wave Ht (m)
							Max	Min					
05-06-24	0001	22	SSE	0.4	2	1004	33	27	29	88%	23% (0.0 mm)	0	0
	0600	20	SE	0.4	2	1005			29	92%	19% (0.0 mm)	1	0 - 0.1
	1200	17	SSW	0.3	2	1005			30	76%	21% (0.0 mm)	2	0.1 - 0.5
	1800	18	S	0.3	2	1003			29	87%	20% (0.0 mm)	3	0.5 - 1.25
06-06-24	0001	16	SSE	0.3	2	1005	33	27	29	89%	18% (0.0 mm)	4	1.25 - 2.5
	0600	18	SSE	0.3	2	1005			29	91%	26% (0.0 mm)	5	2.5 - 4.0
	1200	20	SSW	0.3	2	1006			30	75%	21% (0.0 mm)	6	4.0 - 6.0
	1800	16	S	0.3	2	1003			29	83%	20% (0.0 mm)	7	6.0 - 9.0
07-06-24	0001	15	SSE	0.4	2	1005	33	27	29	88%	19% (0.0 mm)	8	9.0 - 14.0
	0600	20	SSE	0.3	2	1005			29	90%	17% (0.0 mm)	9	Over 14.0
	1200	15	SSW	0.4	2	1004			30	73%	20% (0.0 mm)		
	1800	18	S	0.4	2	1002			29	81%	21% (0.0 mm)		
08-06-24	0001	18	SSE	0.4	2	1004	33	27	29	89%	18% (0.0 mm)		
	0600	19	S	0.4	2	1003			29	91%	15% (0.0 mm)		
	1200	17	S	0.4	2	1004			30	79%	16% (0.0 mm)		
	1800	15	SSE	0.3	2	1002			29	84%	19% (0.0 mm)		

05 June 24 Wed (Probability 70%)

06 June 24 Thu (Probability 60%)

07 June 24 Fri (Probability 50%)

08 June 24 Sat (Probability 50%)



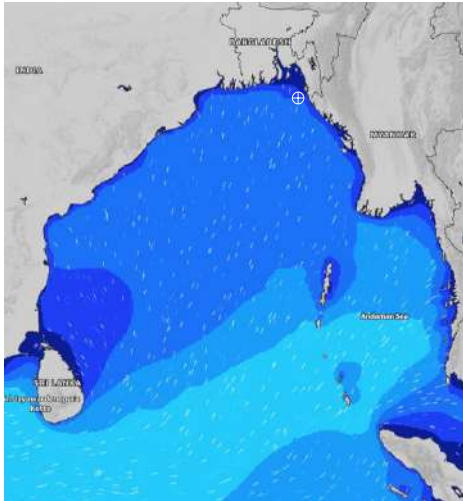
Significant wave height (m)

MARINE WEATHER FORECAST- 20 NM WEST OF ELEPHANT POINT (Lat 21° 10' N, Long 091° 42' E)

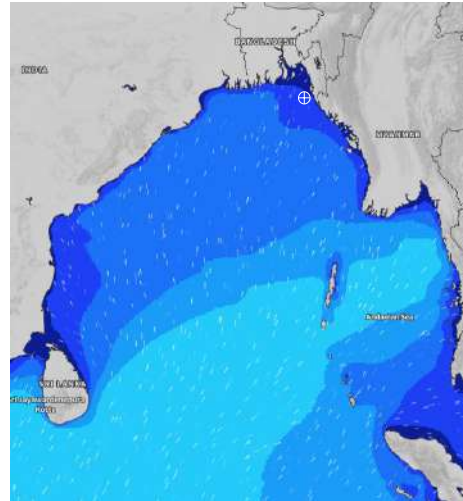
DATE : 01 to 08 June 2024

Date	Time	Max Wind Spd (kts)	Wind Direction	Wave Ht (m)	Sea State	Baro Pressure	Air Temp		Sea Surface Temp	Humidity (%)	Prob of Rain (%)	Sea State	Wave Ht (m)
							Max	Min					
01-06-24	0001	12	SW	1.2	3	1006	33	27	30	88%	21% (0.0 mm)	0	0
	0600	8	SSW	1.2	3	1005			30	92%	18% (0.0 mm)	1	0 - 0.1
	1200	8	SSW	1.1	3	1006			30	85%	16% (0.0 mm)	2	0.1 - 0.5
	1800	11	SW	1.0	3	1005			30	83%	14% (0.0 mm)	3	0.5 - 1.25
02-06-24	0001	10	SSW	1.0	3	1006	33	27	30	87%	21% (0.0 mm)	4	1.25 - 2.5
	0600	6	SSE	0.9	3	1005			30	91%	20% (0.0 mm)	5	2.5 - 4.0
	1200	9	SSW	0.6	3	1006			30	82%	15% (0.0 mm)	6	4.0 - 6.0
	1800	13	SW	1.0	3	1004			30	85%	18% (0.0 mm)	7	6.0 - 9.0
03-06-24	0001	13	SSW	1.1	3	1006	33	27	30	83%	19% (0.0 mm)	8	9.0 - 14.0
	0600	9	S	1.1	3	1005			29	92%	12% (0.0 mm)	9	Over 14.0
	1200	10	SSW	1.1	3	1006			30	84%	14% (0.0 mm)		
	1800	15	SW	1.3	4	1004			30	87%	15% (0.0 mm)		
04-06-24	0001	16	SW	1.5	4	1005	33	27	30	86%	16% (0.0 mm)		
	0600	13	SSE	1.5	4	1005			29	92%	17% (0.0 mm)		
	1200	15	SSW	1.6	4	1006			30	85%	16% (0.0 mm)		
	1800	14	SW	1.5	4	1004			30	87%	18% (0.0 mm)		

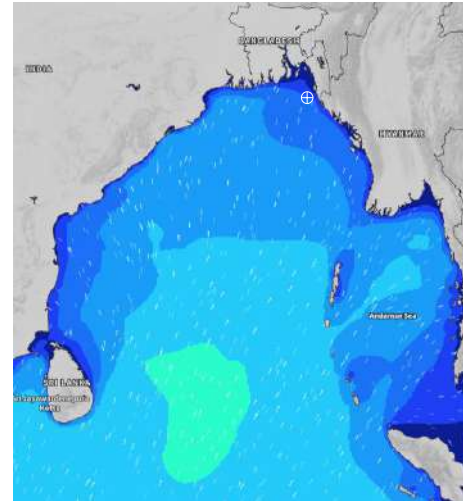
01 June 24 Sat (Probability 98%)



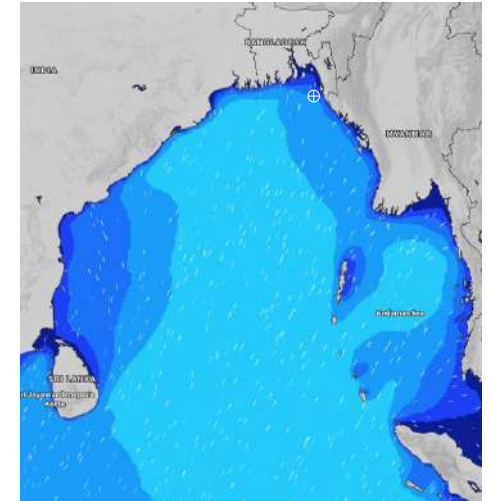
02 June 24 Sun (Probability 95%)



03 June 24 Mon (Probability 90%)



04 June 24 Tue (Probability 80%)



Significant wave height (m)

MARINE WEATHER FORECAST- 20 NM WEST OF ELEPHANT POINT (Lat 21° 10' N, Long 091° 42' E)

DATE : 01 to 08 June 2024

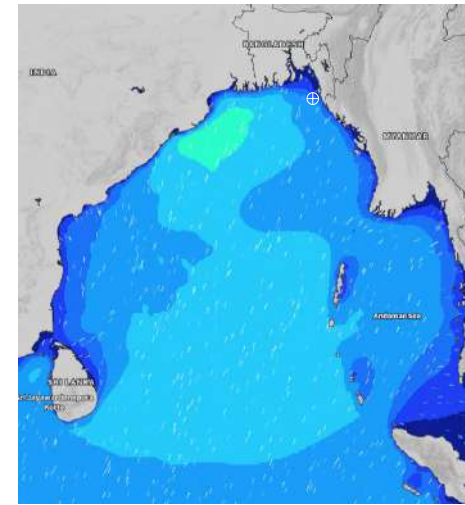
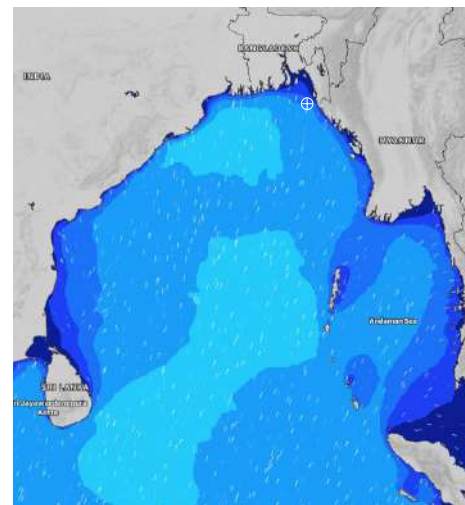
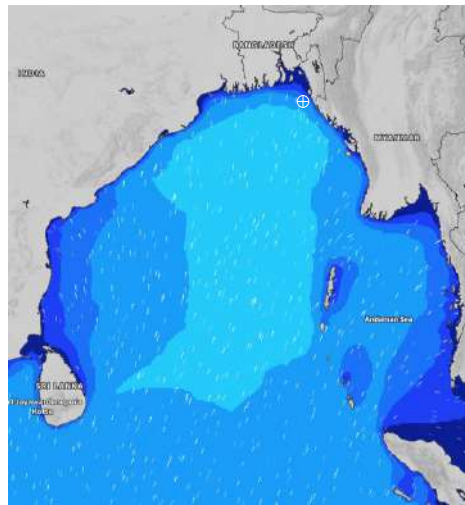
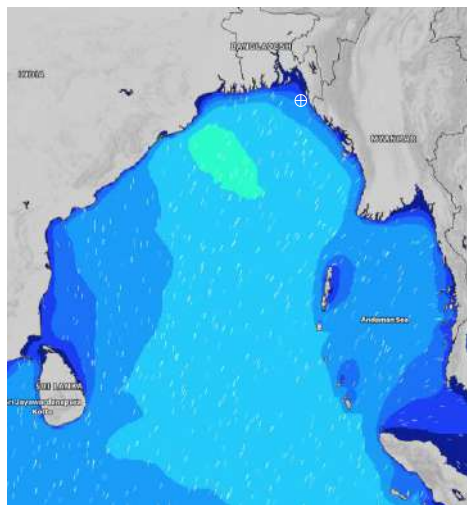
Date	Time	Max Wind Spd (kts)	Wind Direction	Wave Ht (m)	Sea State	Baro Pressure	Air Temp		Sea Surface Temp	Humidity (%)	Prob of Rain (%)	Sea State	Wave Ht (m)
							Max	Min					
05-06-24	0001	16	SSE	1.7	4	1004	33	28	29	88%	22% (0.0 mm)	0	0
	0600	15	S	1.7	4	1005			29	91%	24% (0.0 mm)	1	0 - 0.1
	1200	14	S	1.7	4	1005			30	76%	23% (0.0 mm)	2	0.1 - 0.5
	1800	13	S	1.7	4	1003			30	82%	25% (0.0 mm)	3	0.5 - 1.25
06-06-24	0001	15	SSW	1.8	4	1005	33	28	29	89%	21% (0.0 mm)	4	1.25 - 2.5
	0600	16	S	1.9	4	1006			29	93%	20% (0.0 mm)	5	2.5 - 4.0
	1200	12	SSW	1.9	4	1006			30	77%	15% (0.0 mm)	6	4.0 - 6.0
	1800	11	S	1.8	4	1004			30	85%	16% (0.0 mm)	7	6.0 - 9.0
07-06-24	0001	16	SSE	1.7	4	1005	34	28	29	87%	14% (0.0 mm)	8	9.0 - 14.0
	0600	10	S	1.6	4	1005			29	91%	17% (0.0 mm)	9	Over 14.0
	1200	12	S	1.6	4	1006			30	73%	18% (0.0 mm)		
	1800	15	S	1.6	4	1003			30	86%	15% (0.0 mm)		
08-06-24	0001	17	SSW	1.7	4	1004	34	28	29	90%	16% (0.0 mm)		
	0600	15	SSW	1.7	4	1003			29	94%	13% (0.0 mm)		
	1200	12	SW	1.7	4	1004			30	76%	12% (0.0 mm)		
	1800	13	SSW	1.7	4	1002			30	88%	15% (0.0 mm)		

05 June 24 Wed (Probability 70%)

06 June 24 Thu (Probability 60%)

07 June 24 Fri (Probability 50%)

08 June 24 Sat (Probability 50%)



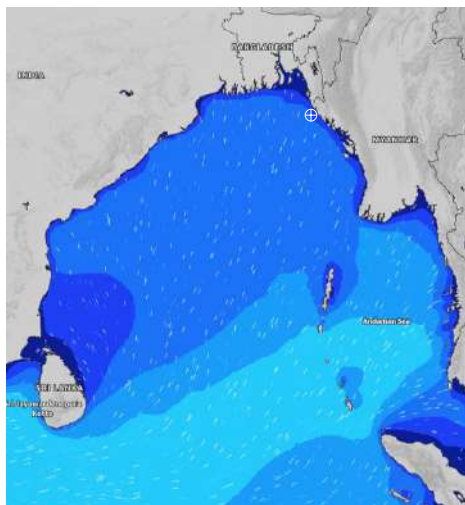
Significant wave height (m)

MARINE WEATHER FORECAST- 15 NM WEST OF ST. MARTIN'S LIGHT HOUSE (Lat 20° 37' N, Long 092° 03' E)

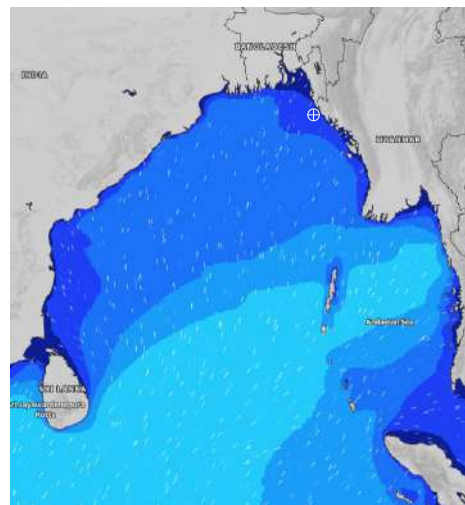
DATE : 01 to 08 June 2024

Date	Time	Max Wind Spd (kts)	Wind Direction	Wave Ht (m)	Sea State	Baro Pressure	Air Temp		Sea Surface Temp	Humidity (%)	Prob of Rain(%)	Sea State	Wave Ht (m)
							Max	Min					
01-06-24	0001	11	SW	1.5	4	1007	33	27	30	88%	20% (0.0 mm)	0	0
	0600	7	WSW	1.4	4	1005			29	91%	19% (0.0 mm)	1	0 - 0.1
	1200	4	SW	1.4	4	1007			30	83%	18% (0.0 mm)	2	0.1 - 0.5
	1800	9	WSW	1.3	4	1005			30	87%	20% (0.0 mm)	3	0.5 - 1.25
02-06-24	0001	13	SW	1.2	3	1007	33	27	30	89%	17% (0.0 mm)	4	1.25 - 2.5
	0600	11	SW	1.2	3	1005			29	92%	15% (0.0 mm)	5	2.5 - 4.0
	1200	6	SSW	1.1	3	1007			30	83%	13% (0.0 mm)	6	4.0 - 6.0
	1800	7	SW	1.1	3	1005			30	85%	15% (0.0 mm)	7	6.0 - 9.0
03-06-24	0001	10	SW	1.2	3	1006	33	27	30	87%	15% (0.0 mm)	8	9.0 - 14.0
	0600	13	SW	1.3	4	1005			29	91%	16% (0.0 mm)	9	Over 14.0
	1200	10	SW	1.4	4	1006			30	82%	18% (0.0 mm)		
	1800	10	SW	1.5	4	1004			30	86%	17% (0.0 mm)		
04-06-24	0001	12	SSW	1.7	4	1006	33	27	30	89%	15% (0.0 mm)		
	0600	14	S	1.8	4	1005			29	94%	16% (0.0 mm)		
	1200	10	SSW	1.8	4	1006			30	82%	18% (0.0 mm)		
	1800	11	SW	1.9	4	1004			30	88%	17% (0.0 mm)		

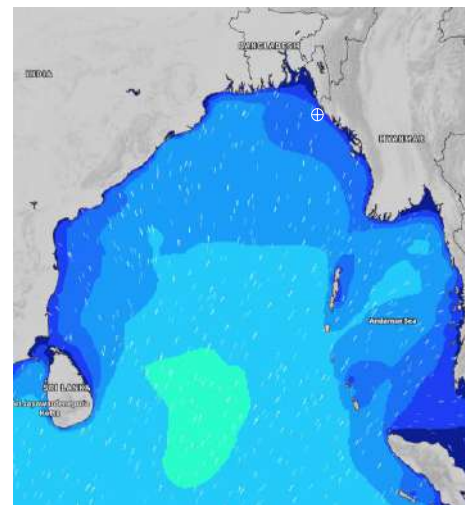
01 June 24 Sat (Probability 98%)



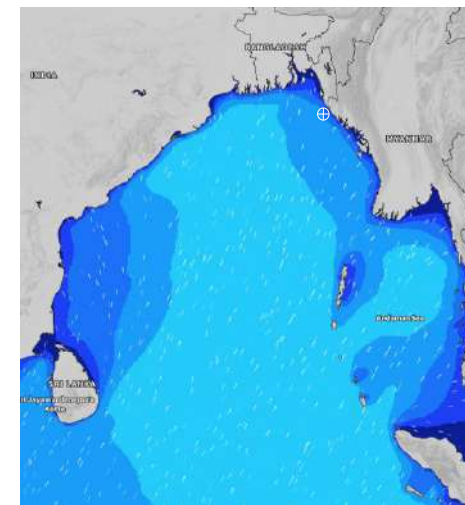
02 June 24 Sun (Probability 95%)



03 June 24 Mon (Probability 90%)



04 June 24 Tue (Probability 80%)



Significant wave height (m)

MARINE WEATHER FORECAST- 15 NM WEST OF ST. MARTIN'S LIGHT HOUSE (Lat 20° 37'N, Long 092° 03'E)

DATE : 01 to 08 June 2024

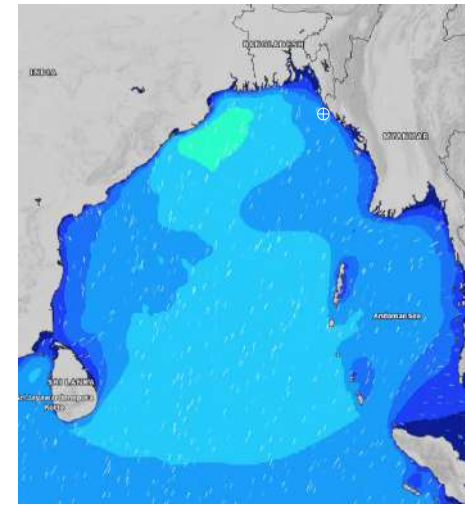
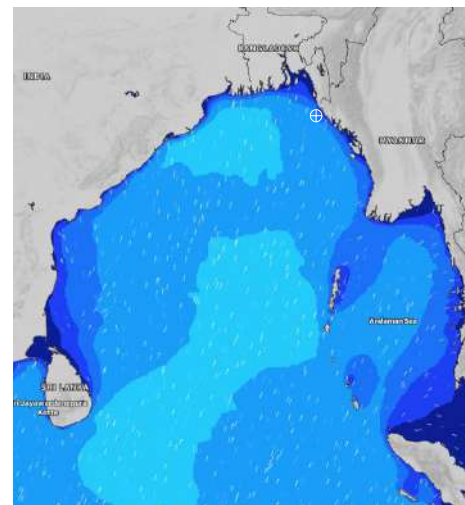
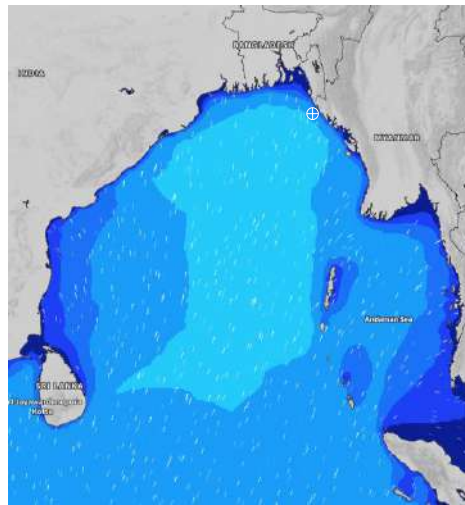
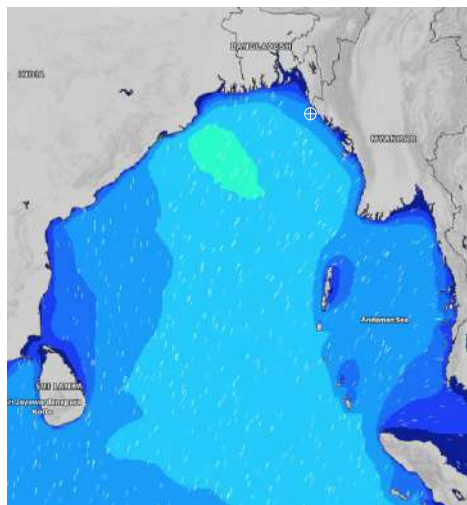
Date	Time	Max Wind Spd (kts)	Wind Direction	Wave Ht (m)	Sea State	Baro Pressure	Air Temp		Sea Surface Temp	Humidity (%)	Prob of Rain (%)	Sea State	Wave Ht (m)
							Max	Min					
05-06-24	0001	12	S	2.0	4	1005	33	28	30	89%	14% (0.0 mm)	0	0
	0600	15	S	2.1	4	1004			29	91%	18% (0.0 mm)	1	0 - 0.1
	1200	14	SSW	2.2	4	1006			29	83%	16% (0.0 mm)	2	0.1 - 0.5
	1800	12	SW	2.2	4	1003			29	87%	20% (0.0 mm)	3	0.5 - 1.25
06-06-24	0001	14	S	2.3	4	1005	34	28	30	88%	18% (0.0 mm)	4	1.25 - 2.5
	0600	12	SW	2.4	4	1005			29	92%	15% (0.0 mm)	5	2.5 - 4.0
	1200	13	SW	2.4	4	1006			29	84%	16% (0.0 mm)	6	4.0 - 6.0
	1800	12	SW	2.2	4	1004			29	87%	18% (0.0 mm)	7	6.0 - 9.0
07-06-24	0001	12	S	2.1	4	1006	34	28	30	89%	18% (0.0 mm)	8	9.0 - 14.0
	0600	12	SSW	2.0	4	1004			29	93%	19% (0.0 mm)	9	Over 14.0
	1200	9	SSW	2.0	4	1005			29	85%	15% (0.0 mm)		
	1800	14	SSW	2.0	4	1003			29	87%	12% (0.0 mm)		
08-06-24	0001	16	SSW	2.1	4	1005	34	28	30	90%	14% (0.0 mm)		
	0600	15	SW	2.1	4	1003			29	93%	15% (0.0 mm)		
	1200	14	SW	2.0	4	1004			29	85%	16% (0.0 mm)		
	1800	16	SSW	2.1	4	1003			29	86%	15% (0.0 mm)		

05 June 24 Wed (Probability 70%)

06 June 24 Thu (Probability 60%)

07 June 24 Fri (Probability 50%)

08 June 24 Sat (Probability 50%)



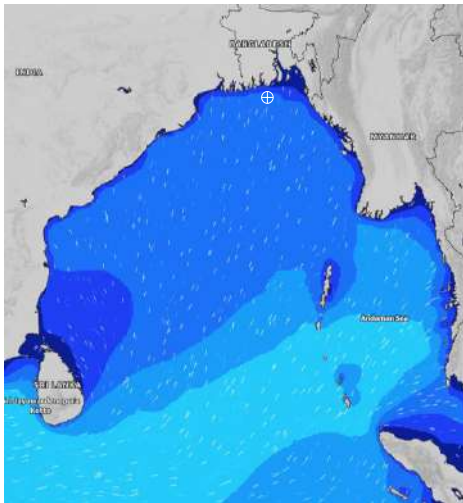
Significant wave height (m)

MARINE WEATHER FORECAST- 40 NM ESE OF PAYRA FAIRWAY (Lat 21° 07' N, Long 090° 45' E)

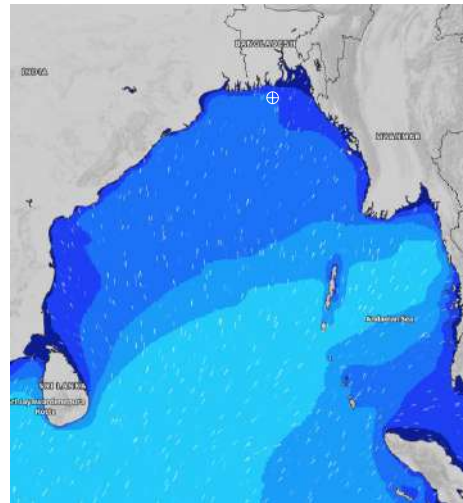
DATE : 01 to 08 June 2024

Date	Time	Max Wind Spd (kts)	Wind Direction	Wave Ht (m)	Sea State	Baro Pressure	Air Temp		Sea Surface Temp	Humidity (%)	Prob of Rain (%)	Sea State	Wave Ht (m)
							Max	Min					
01-06-24	0001	13	SW	1.6	4	1006	33	28	30	89%	21% (0.0 mm)	0	0
	0600	12	SSW	1.5	4	1005			29	92%	16% (0.0 mm)	1	0 - 0.1
	1200	11	SSW	1.4	4	1006			30	84%	15% (0.0 mm)	2	0.1 - 0.5
	1800	13	SW	1.3	4	1005			30	87%	14% (0.0 mm)	3	0.5 - 1.25
02-06-24	0001	16	SW	1.3	4	1006	33	28	30	89%	16% (0.0 mm)	4	1.25 - 2.5
	0600	10	S	1.3	4	1005			29	92%	15% (0.0 mm)	5	2.5 - 4.0
	1200	12	SSW	1.3	4	1006			30	81%	18% (0.0 mm)	6	4.0 - 6.0
	1800	14	SSW	1.3	4	1004			30	85%	13% (0.0 mm)	7	6.0 - 9.0
03-06-24	0001	17	SSW	1.5	4	1006	34	28	30	88%	15% (0.0 mm)	8	9.0 - 14.0
	0600	15	SW	1.6	4	1005			29	93%	12% (0.0 mm)	9	Over 14.0
	1200	14	SSW	1.6	4	1006			30	82%	15% (0.0 mm)		
	1800	19	SSW	1.7	4	1003			30	88%	13% (0.0 mm)		
04-06-24	0001	20	S	2.1	4	1004	34	28	30	89%	16% (0.0 mm)		
	0600	16	S	2.2	4	1004			29	91%	14% (0.0 mm)		
	1200	19	SW	2.2	4	1005			30	83%	18% (0.0 mm)		
	1800	17	SSW	2.2	4	1003			30	87%	16% (0.0 mm)		

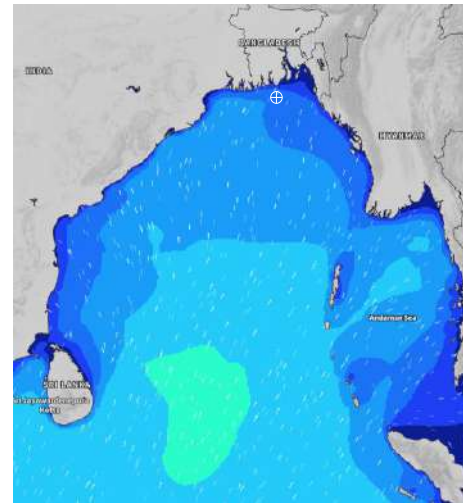
01 June 24 Sat (Probability 98%)



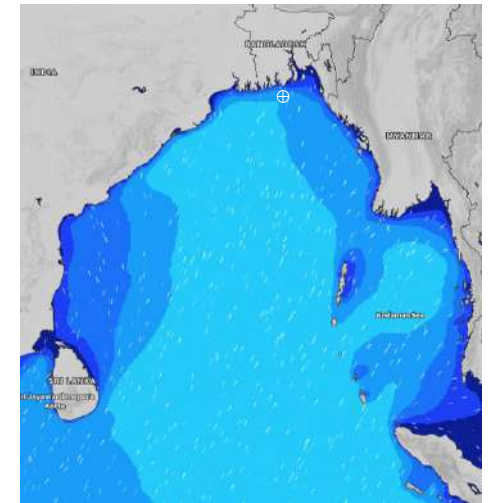
02 June 24 Sun (Probability 95%)



03 June 24 Mon (Probability 90%)



04 June 24 Tue (Probability 80%)



Significant wave height (m)

MARINE WEATHER FORECAST- 40 NM ESE OF PAYRA FAIRWAY (Lat 21° 07' N, Long 090° 45' E)

DATE : 01 to 08 June 2024

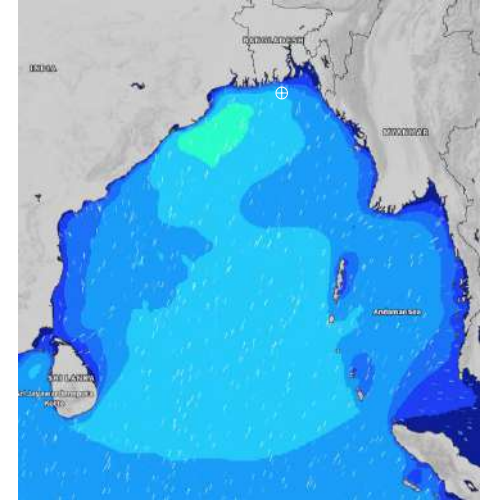
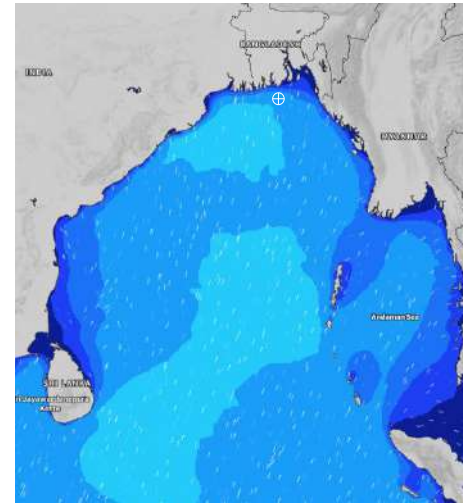
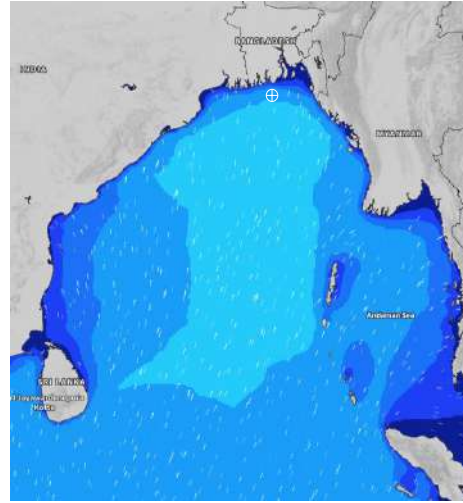
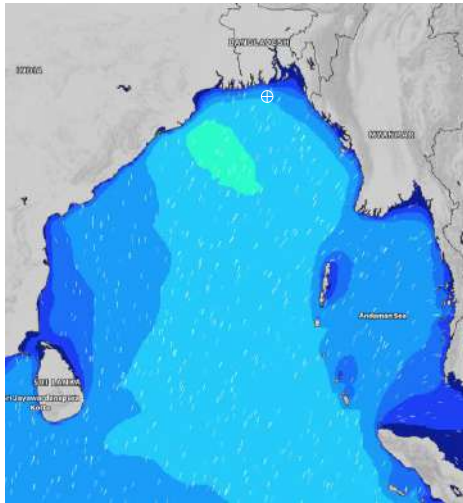
Date	Time	Max Wind Spd (kts)	Wind Direction	Wave Ht (m)	Sea Stae	Baro Pressure	Air Temp		Sea Surface Temp	Humidity (%)	Prob of Rain (%)	Sea State	Wave Ht (m)
							Max	Min					
05-06-24	0001	18	S	2.3	4	1004	34	28	30	89%	21% (0.0 mm)	0	0
	0600	17	SSW	2.4	4	1004			29	91%	19% (0.0 mm)	1	0 - 0.1
	1200	17	SSW	2.4	4	1005			30	83%	18% (0.0 mm)	2	0.1 - 0.5
	1800	18	SSW	2.4	4	1002			30	85%	15% (0.0 mm)	3	0.5 - 1.25
06-06-24	0001	16	SW	2.4	4	1005	34	28	30	87%	13% (0.0 mm)	4	1.25 - 2.5
	0600	23	SW	2.6	5	1005			29	92%	15% (0.0 mm)	5	2.5 - 4.0
	1200	20	SW	2.6	5	1006			30	86%	14% (0.0 mm)	6	4.0 - 6.0
	1800	15	SSW	2.4	4	1003			30	88%	18% (0.0 mm)	7	6.0 - 9.0
07-06-24	0001	14	SW	2.3	4	1004	34	28	30	88%	17% (0.0 mm)	8	9.0 - 14.0
	0600	17	SSW	2.2	4	1004			29	91%	16% (0.0 mm)	9	Over 14.0
	1200	20	SSW	2.2	4	1005			30	86%	18% (0.0 mm)		
	1800	17	SSW	2.2	4	1003			30	87%	19% (0.0 mm)		
08-06-24	0001	21	SSW	2.2	4	1003	34	28	30	88%	12% (0.0 mm)		
	0600	20	SW	2.4	4	1002			29	96%	15% (0.0 mm)		
	1200	19	SW	2.4	4	1003			30	88%	13% (0.0 mm)		
	1800	21	SSW	2.4	4	1002			30	84%	16% (0.0 mm)		

05 June 24 Wed (Probability 70%)

06 June 24 Thu (Probability 60%)

07 June 24 Fri (Probability 50%)

08 June 24 Sat (Probability 50%)



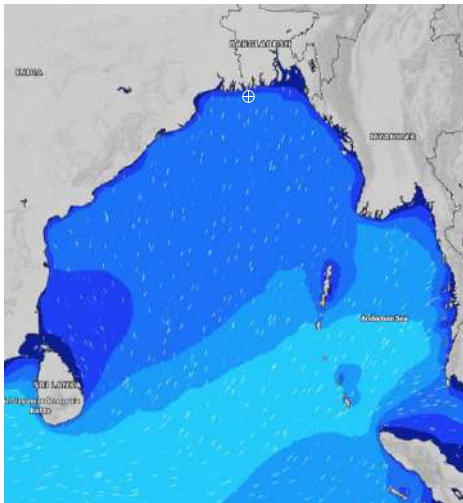
Significant wave height (m)

MARINE WEATHER FORECAST- 10 NM SOUTH OF MONGLA FAIRWAY (Lat 21° 16' N, Long 089° 34' E)

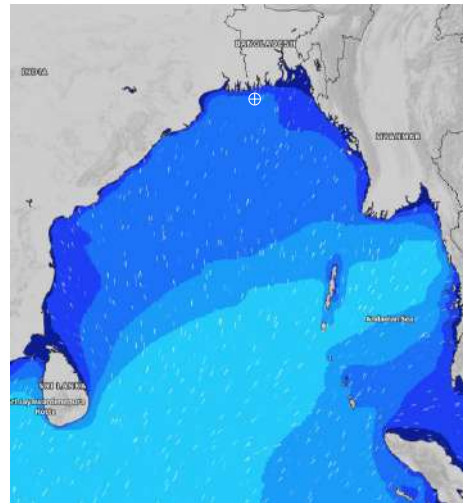
DATE : 01 to 08 June 2024

Date	Time	Max Wind Spd (kts)	Wind Direction	Wave Ht (m)	Sea State	Baro Pressure	Air Temp		Sea Surface Temp	Humidity (%)	Prob of Rain (%)	Sea State	Wave Ht (m)
							Max	Min					
01-06-24	0001	15	SW	1.5	4	1006	34	28	30	89%	18% (0.0 mm)	0	0
	0600	16	SSW	1.5	4	1005			30	92%	13% (0.0 mm)	1	0 - 0.1
	1200	15	SSW	1.5	4	1006			31	76%	15% (0.0 mm)	2	0.1 - 0.5
	1800	15	SSW	1.4	4	1004			30	87%	16% (0.0 mm)	3	0.5 - 1.25
02-06-24	0001	19	SSW	1.4	4	1005	34	28	30	88%	12% (0.0 mm)	4	1.25 - 2.5
	0600	16	SSW	1.4	4	1005			30	92%	11% (0.0 mm)	5	2.5 - 4.0
	1200	16	SSW	1.4	4	1006			31	76%	14% (0.0 mm)	6	4.0 - 6.0
	1800	18	SSW	1.5	4	1003			30	88%	13% (0.0 mm)	7	6.0 - 9.0
03-06-24	0001	23	SSW	1.6	4	1004	34	28	30	89%	12% (0.0 mm)	8	9.0 - 14.0
	0600	20	SW	1.9	4	1004			30	94%	15% (0.0 mm)	9	Over 14.0
	1200	21	SSW	1.8	4	1004			31	76%	14% (0.0 mm)		
	1800	23	SSW	2.0	4	1002			30	86%	11% (0.0 mm)		
04-06-24	0001	26	S	2.3	4	1004	34	28	30	87%	15% (0.0 mm)		
	0600	19	SSW	2.3	4	1003			30	91%	12% (0.0 mm)		
	1200	22	SW	2.3	4	1004			31	76%	13% (0.0 mm)		
	1800	20	SSW	2.3	4	1003			30	88%	15% (0.0 mm)		

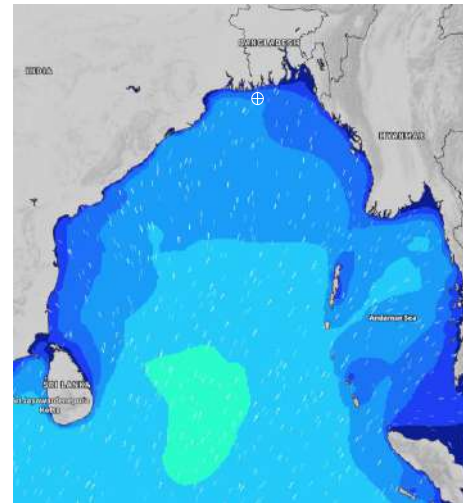
01 June 24 Sat (Probability 98%)



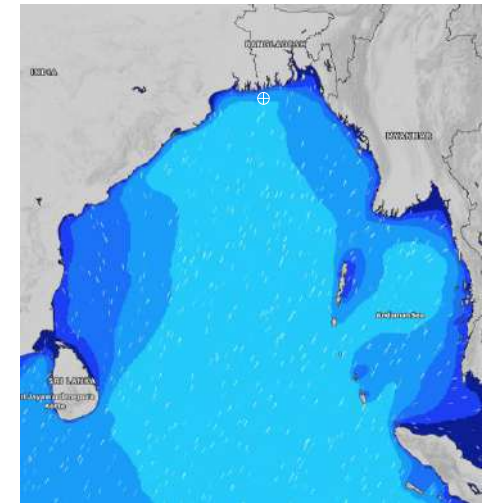
02 June 24 Sun (Probability 95%)



03 June 24 Mon (Probability 90%)



04 June 24 Tue (Probability 80%)



Significant wave height (m)

MARINE WEATHER FORECAST- 10 NM SOUTH OF MONGLA FAIRWAY (Lat 21° 16' N, Long 089° 34' E)

DATE : 01 to 08 June 2024

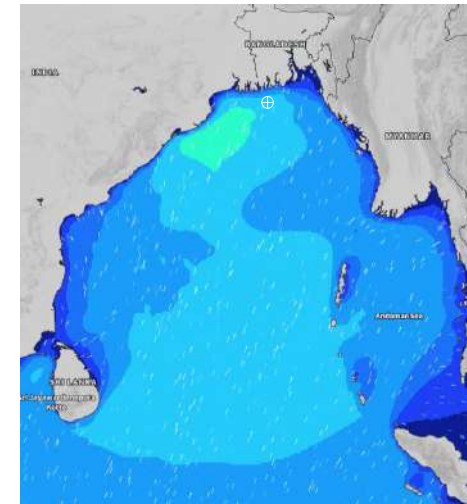
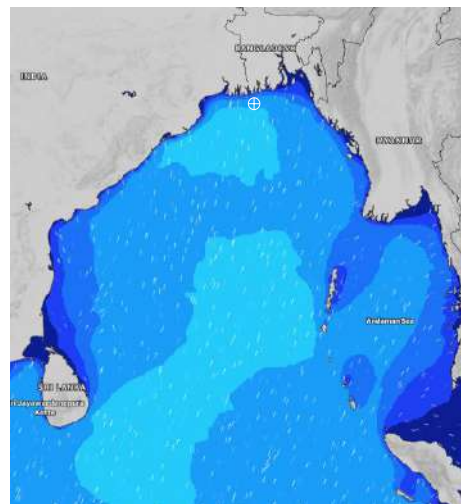
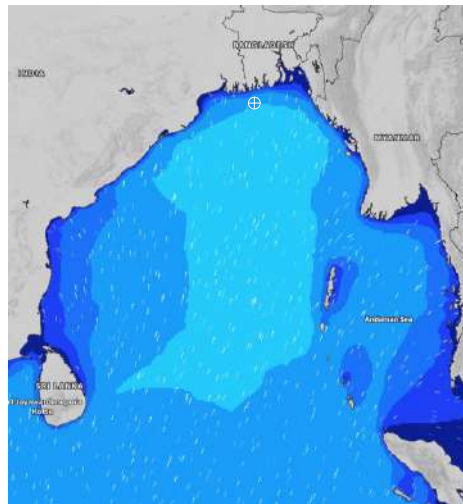
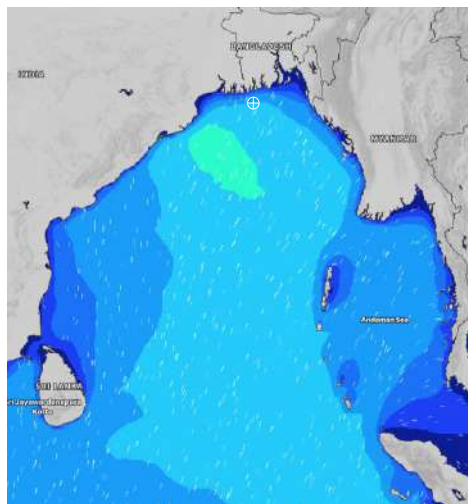
Date	Time	Max Wind Spd (kts)	Wind Direction	Wave Ht (m)	Sea State	Baro Pressure	Air Temp		Sea Surface Temp	Humidity (%)	Prob of Rain (%)	Sea State	Wave Ht (m)
							Max	Min					
05-06-24	0001	16	SSW	2.4	4	1003	34	29	30	88%	12% (0.0 mm)	0	0
	0600	21	SSW	2.4	4	1003			30	93%	15% (0.0 mm)	1	0 - 0.1
	1200	20	SSW	2.4	4	1004			30	86%	16% (0.0 mm)	2	0.1 - 0.5
	1800	16	SSW	2.4	4	1002			30	88%	18% (0.0 mm)	3	0.5 - 1.25
06-06-24	0001	11	SSW	2.4	4	1004	34	29	30	84%	16% (0.0 mm)	4	1.25 - 2.5
	0600	19	SSW	2.4	4	1004			30	92%	19% (0.0 mm)	5	2.5 - 4.0
	1200	18	SW	2.3	4	1005			30	85%	22% (0.0 mm)	6	4.0 - 6.0
	1800	14	SSW	2.2	4	1002			30	86%	20% (0.0 mm)	7	6.0 - 9.0
07-06-24	0001	21	SSW	2.2	4	1003	34	29	30	83%	21% (0.0 mm)	8	9.0 - 14.0
	0600	22	SSW	2.3	4	1003			30	94%	19% (0.0 mm)	9	Over 14.0
	1200	20	SSW	2.3	4	1004			30	86%	18% (0.0 mm)		
	1800	22	SSW	2.5	4	1002			30	88%	16% (0.0 mm)		
08-06-24	0001	23	SSW	2.6	5	1003	34	29	30	86%	17% (0.0 mm)		
	0600	26	SSW	2.6	5	1002			30	95%	18% (0.0 mm)		
	1200	20	SW	2.5	4	1003			30	84%	20% (0.0 mm)		
	1800	21	SSW	2.6	5	1002			30	86%	19% (0.0 mm)		

05 June 24 Wed (Probability 70%)

06 June 24 Thu (Probability 60%)

07 June 24 Fri (Probability 50%)

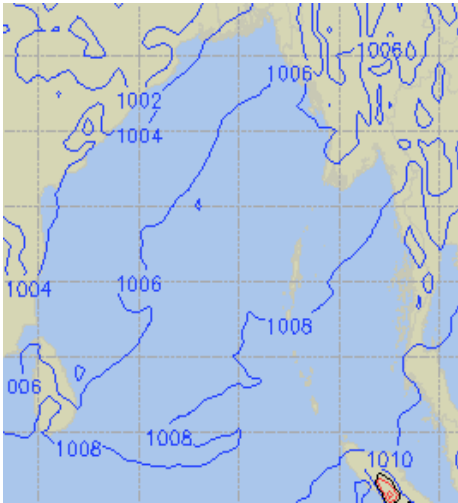
08 June 24 Sat (Probability 50%)



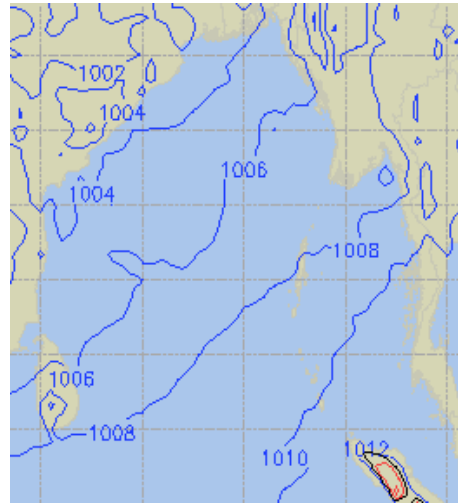
Significant wave height (m)

PREDICTED SURFACE PRESSURE FORECAST (01 to 07 June 2024)

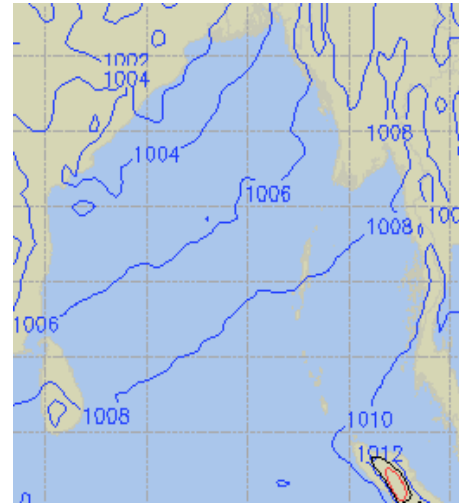
01 June 24 Sat (Probability 98%)



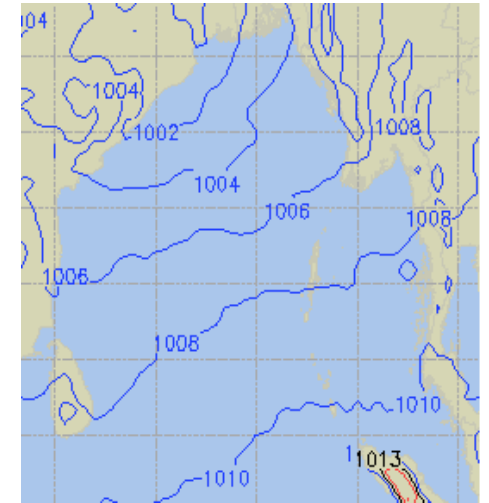
02 June 24 Sun (Probability 95%)



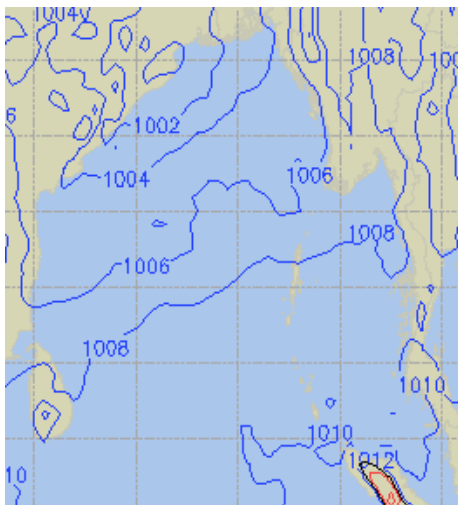
03 June 24 Mon (Probability 90%)



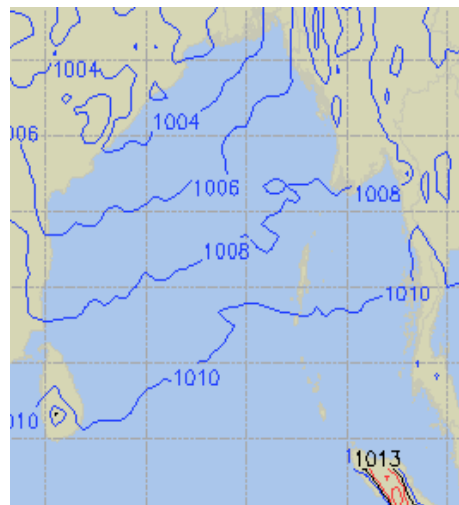
04 June 24 Tue (Probability 80%)



05 June 24 Wed (Probability 70%)



06 June 24 Thu (Probability 60%)



07 June 24 Fri (Probability 50%)

