



**SUMMARY OF MARINE WEATHER FORECAST**  
**COASTAL AREA OF BANGLADESH**  
**DATE: 01 to 08 May 2026**



Fleet Forecast	The trough of low persists from West Bengal to North Bay.
Wind Direction, Speed	South-west/Southerly 10-15 kts, temporary gusting up to 20 kts.
Wave Height & Sea State	Ctg Outer Anchorage: 0.3 to 0.9 m (Sea state: 2 to 3) Abeam to Cox's Bazar: 1.2 to 1.9 m (Sea state: 3 to 4) St. Martin's Island: 1.0 to 1.7 m (Sea state 3 to 4) Payra Fairway Buoy: 1.0 to 2.1 m (Sea state: 3 to 4) Mongla Fairway Buoy: 1.0 to 2.2 m (Sea state: 3 to 4) Outer EEZ: 1.0 to 1.9 m (Sea state: 3 to 4)
Sea Surface Temperature	25° C - 28° C
Baro Pressure	1007-1010 mb
Rainfall	Cloudy to cloudy sky with moderate to heavy rain/thunder showers with gusty wind is likely to occur over Bay of Bengal and adjoining area.
Fog & Visibility	Hazy condition over the Bay of Bengal & coastal area, Visibility 1.0 – 5.0 km

**Marine Weather Outlook (01 to 08 May 2026):**

- Cloudy to cloudy sky with moderate to heavy rain/thunder showers with gusty wind is likely to occur over Bay of Bengal and adjoining area.
- Hazy condition over the Bay of Bengal & coastal area.
- Rainfall activity may continue.



# MARINE WEATHER FORECAST (01 to 08 May 2026)

## PATENGA POINT (22° 12' N, 091° 38' E)



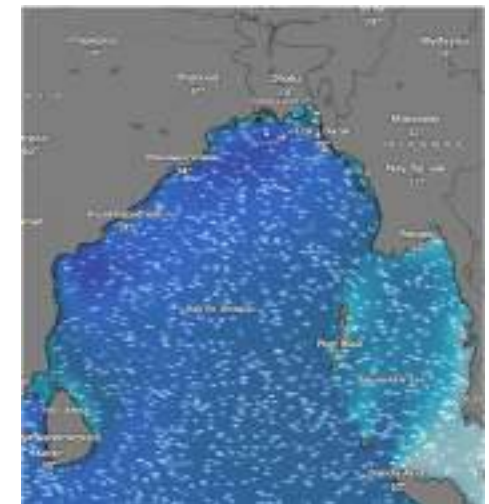
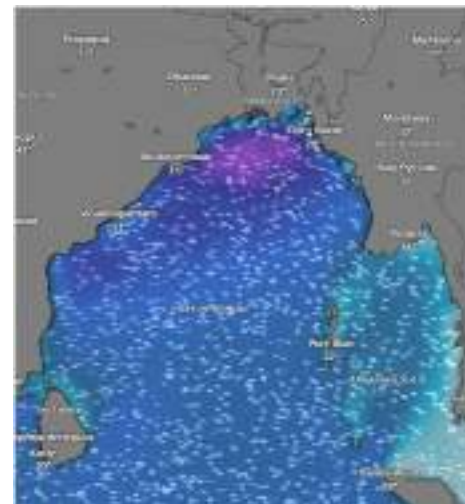
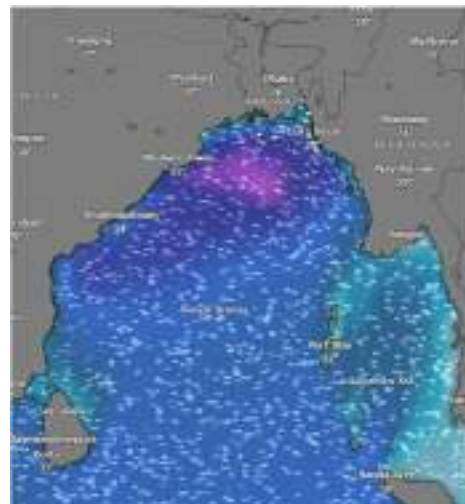
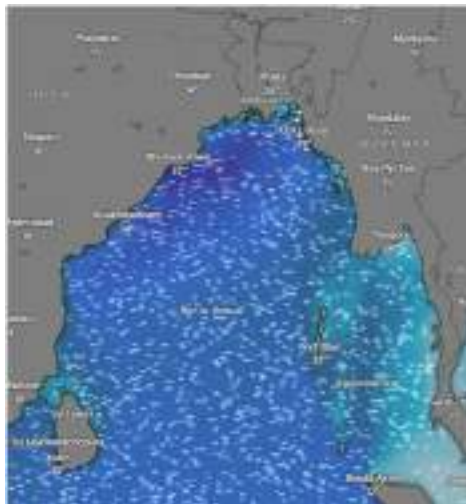
Date	Time	Air Temp (°C)		Sea Surface Temp (°C)	Baro Pressure (mbar)	Wind Direction	Wind Spd (kts)		Wave Ht (m)	Sea State	Humidity (%)	Prob of Rain (%)	Amount of Rain (mm)
		Max	Min				Gusting	Avg					
01-05-26 (Friday)	0001	29	23	25	1009	SSE	17	13	0.5	3	90	75	2.5
	0600			26	1010	SSE	20	15	0.7	3	92	49	0.5
	1200			28	1008	SSW	15	11	0.5	3	87	42	0.4
	1800			26	1007	S	14	10	0.5	3	89	75	0.8
02-05-26 (Saturday)	0001	30	24	25	1007	SSE	18	14	0.5	3	92	52	0.6
	0600			26	1008	SE	20	15	0.6	3	93	20	0.0
	1200			28	1006	S	21	15	0.6	3	89	43	0.5
	1800			26	1005	SSW	17	13	0.6	3	95	64	0.7
03-05-26 (Sunday)	0001	29	23	25	1007	SE	16	12	0.6	3	91	39	0.4
	0600			26	1008	SE	18	14	0.7	3	90	77	2.3
	1200			28	1006	S	17	13	0.6	3	89	90	3.5
	1800			26	1005	SSE	12	08	0.8	3	91	34	0.3
04-05-26 (Monday)	0001	29	23	25	1010	SE	15	11	0.6	3	92	43	0.4
	0600			26	1011	SE	16	12	0.6	3	93	57	0.6
	1200			28	1009	S	10	06	0.5	3	85	51	0.5
	1800			26	1008	SSE	14	10	0.5	3	88	20	0.1

01 May 2026

02 May 2026

03 May 2026

04 May 2026



Significant wave height (m)



## MARINE WEATHER FORECAST (01 to 08 May 2026) PATENGA POINT (22° 12' N, 091° 38' E)



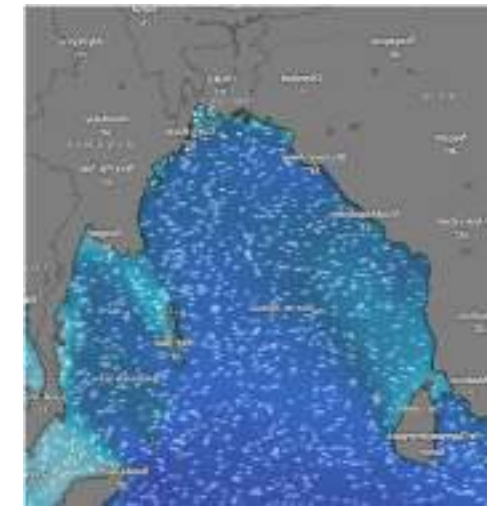
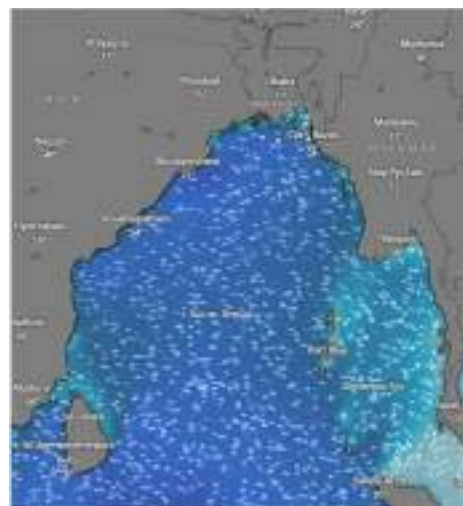
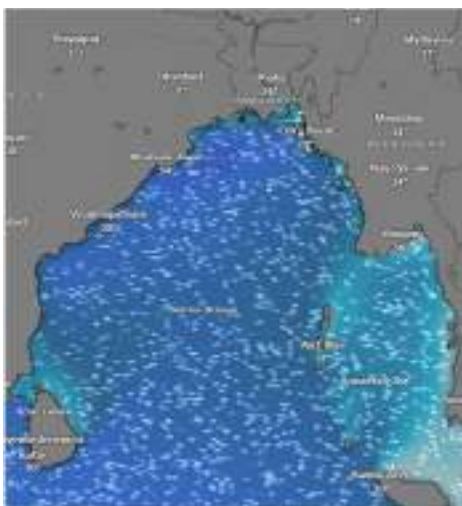
Date	Time	Air Temp (°C)		Sea Surface Temp (°C)	Baro Pressure (mbar)	Wind Direction	Wind Spd (kts)		Wave Ht (m)	Sea State	Humidity (%)	Prob of Rain (%)	Amount of Rain (mm)
		Max	Min				Gusting	Avg					
05-05-26 (Tuesday)	0001	29	23	25	1011	SSE	13	09	0.5	3	92	24	0.1
	0600			26	1013	SSE	12	08	0.4	2	93	33	0.3
	1200			28	1010	SSW	13	09	0.5	3	79	16	0.0
	1800			26	1009	S	12	08	0.5	3	86	18	0.0
06-05-26 (Wednesday)	0001	30	24	25	1009	SSW	09	5	0.5	3	92	32	0.3
	0600			26	1010	SSE	10	9	0.5	3	93	37	0.4
	1200			28	1008	S	17	13	0.4	2	81	18	0.0
	1800			26	1007	SSW	12	08	0.3	2	85	10	0.0
07-05-26 (Thursday)	0001	30	24	25	1008	SSW	10	6	0.3	2	92	59	0.6
	0600			26	1009	SSE	09	05	0.3	2	93	43	0.5
	1200			28	1007	SSW	10	06	0.4	2	80	15	0.0
	1800			26	1006	SSW	07	04	0.3	2	87	37	0.4
08-05-26 (Friday)	0001	30	24	25	1008	S	09	05	0.3	2	90	43	0.4
	0600			26	1009	SE	07	04	0.2	2	93	34	0.3
	1200			28	1007	W	10	06	0.3	2	85	22	0.0
	1800			26	1006	W	09	05	0.3	2	88	36	0.4

05 May 2026

06 May 2026

07 May 2026

08 May 2026



Significant wave height (m)



## MARINE WEATHER FORECAST (01 to 08 May 2026) ABEAM TO KUTUBDIA (21° 51' N, 091° 40' E)

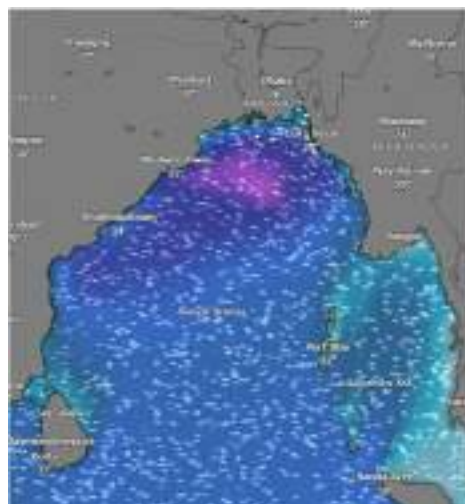


Date	Time	Air Temp (°C)		Sea Surface Temp (°C)	Baro Pressure (mbar)	Wind Direction	Wind Spd (kts)		Wave Ht (m)	Sea State	Humidity (%)	Prob of Rain (%)	Amount of Rain (mm)
		Max	Min				Gusting	Avg					
01-05-26 (Friday)	0001	29	23	25	1009	S	15	11	0.6	3	91	76	2.5
	0600			26	1010	SSE	27	20	0.8	3	93	47	0.5
	1200			28	1008	SSW	15	11	0.7	3	85	45	0.4
	1800			26	1007	S	16	12	0.7	3	88	76	0.8
02-05-26 (Saturday)	0001	30	24	25	1007	SSE	15	11	0.6	3	92	53	0.6
	0600			26	1008	SE	16	12	0.7	3	93	24	0.1
	1200			28	1006	SSE	27	20	0.8	3	89	45	0.5
	1800			26	1005	SSW	18	14	0.8	3	95	66	0.7
03-05-26 (Sunday)	0001	30	24	25	1007	SE	24	17	0.9	3	91	40	0.4
	0600			26	1008	SSE	27	20	0.9	3	90	76	2.5
	1200			28	1006	S	17	13	0.9	3	89	90	3.7
	1800			26	1005	SSE	28	22	0.8	3	91	34	0.3
04-05-26 (Monday)	0001	29	23	25	1010	SSE	24	17	0.8	3	92	43	0.4
	0600			26	1011	SE	25	17	0.8	3	93	57	0.6
	1200			28	1009	SSW	14	10	0.7	3	85	51	0.5
	1800			26	1008	S	14	10	0.7	3	88	24	0.1

01 May 2026



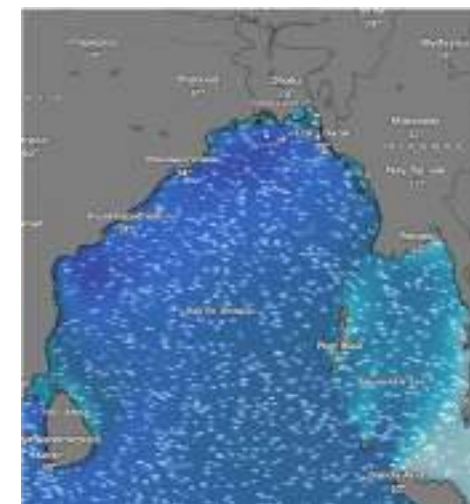
02 May 2026



03 May 2026



04 May 2026



Significant wave height (m)



# MARINE WEATHER FORECAST (01 to 08 May 2026)

## ABEAM TO KUTUBDIA (21° 51' N, 091° 40' E)



Date	Time	Air Temp (°C)		Sea Surface Temp (°C)	Baro Pressure (mbar)	Wind Direction	Wind Spd (kts)		Wave Ht (m)	Sea State	Humidity (%)	Prob of Rain (%)	Amount of Rain (mm)
		Max	Min				Gusting	Avg					
05-05-26 (Tuesday)	0001	29	23	25	1011	SSW	15	11	0.6	3	91	26	0.1
	0600			26	1013	SSE	14	10	0.6	3	92	35	0.3
	1200			28	1010	SE	14	10	0.6	3	79	16	0.0
	1800			26	1009	SSW	15	11	0.5	3	86	18	0.0
06-05-26 (Wednesday)	0001	29	23	25	1009	SSW	16	12	0.5	3	92	32	0.3
	0600			26	1010	SSE	18	14	0.5	3	93	37	0.4
	1200			28	1008	SSE	18	14	0.5	3	81	18	0.0
	1800			26	1007	SSW	13	09	0.5	3	85	10	0.0
07-05-26 (Thursday)	0001	30	24	25	1008	SSW	10	06	0.5	3	92	59	0.6
	0600			26	1009	SSE	13	09	0.5	3	93	43	0.5
	1200			28	1007	SSW	11	07	0.4	2	80	15	0.0
	1800			26	1006	W	09	05	0.4	2	87	37	0.4
08-05-26 (Friday)	0001	30	24	25	1008	SSW	10	06	0.4	2	91	41	0.5
	0600			26	1009	SW	09	05	0.4	2	92	34	0.4
	1200			28	1007	W	10	06	0.4	2	85	24	0.1
	1800			26	1006	W	11	07	0.4	2	88	36	0.4

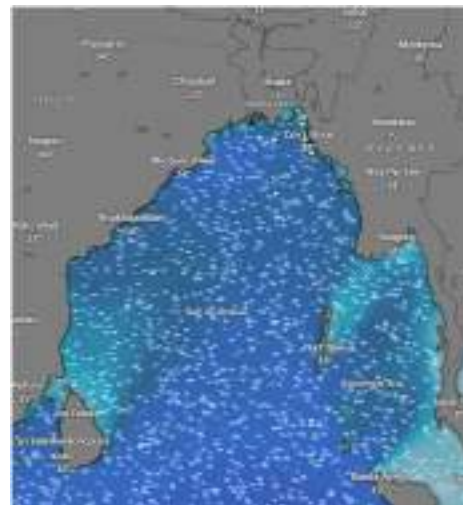
05 May 2026



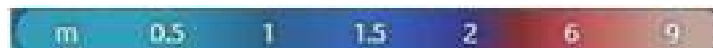
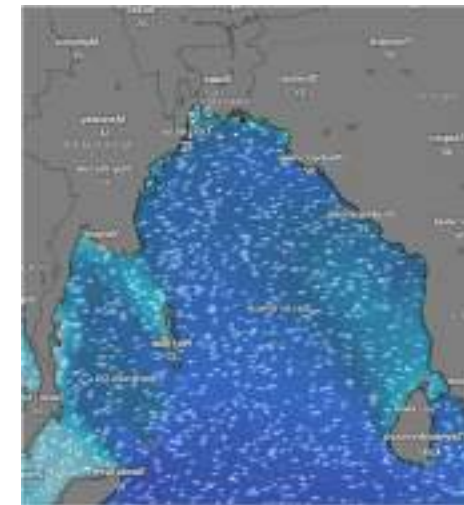
06 May 2026



07 May 2026



08 May 2026



Significant wave height (m)



# MARINE WEATHER FORECAST (01 to 08 May 2026)

## ABEAM TO ELEPHANT POINT (21° 11' N, 091° 52' E)



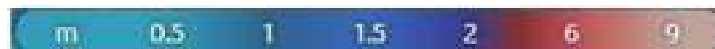
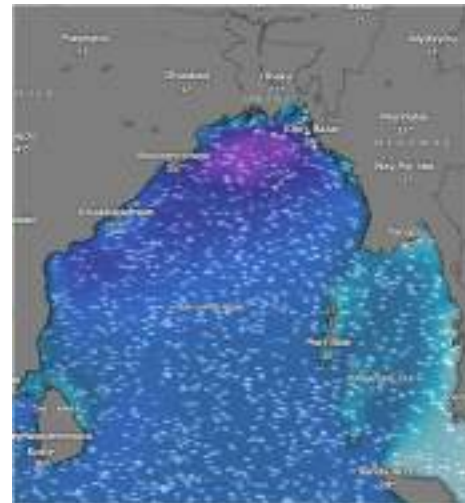
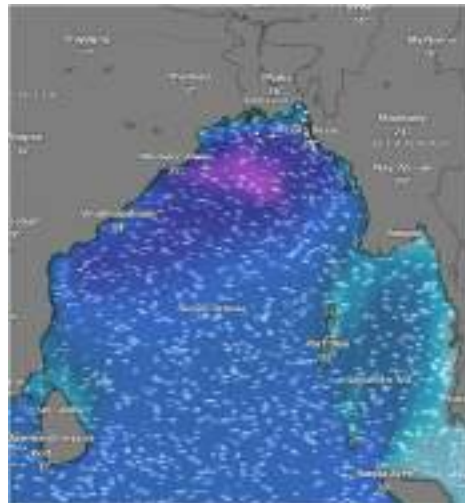
Date	Time	Air Temp (°C)		Sea Surface Temp (°C)	Baro Pressure (mbar)	Wind Direction	Wind Spd (kts)		Wave Ht (m)	Sea State	Humidity (%)	Prob of Rain (%)	Amount of Rain (mm)
		Max	Min				Gusting	Avg					
01-05-26 (Friday)	0001	29	23	25	1009	S	14	10	1.2	3	90	75	2.5
	0600			26	1010	S	16	12	1.2	3	92	49	0.5
	1200			28	1008	SSW	18	14	1.4	4	87	42	0.4
	1800			26	1007	SSW	11	07	1.3	4	89	75	0.8
02-05-26 (Saturday)	0001	30	24	25	1007	SE	13	09	1.2	3	92	52	0.6
	0600			26	1008	SSW	22	17	1.6	4	93	20	0.0
	1200			28	1006	S	16	12	1.6	4	89	43	0.5
	1800			26	1005	SSW	13	09	1.6	4	95	64	0.7
03-05-26 (Sunday)	0001	30	24	25	1007	SE	27	20	1.7	4	91	39	0.4
	0600			26	1008	SSE	22	17	1.8	4	90	77	2.3
	1200			28	1006	S	18	14	1.7	4	89	90	3.5
	1800			26	1005	SSE	12	08	1.6	4	91	34	0.3
04-05-26 (Monday)	0001	29	23	25	1010	SSE	20	15	1.6	4	92	43	0.4
	0600			26	1011	SSE	18	14	1.5	4	93	57	0.6
	1200			28	1009	S	13	09	1.4	4	85	51	0.5
	1800			26	1008	SSW	11	07	1.3	4	88	20	0.1

01 May 2026

02 May 2026

03 May 2026

04 May 2026



Significant wave height (m)



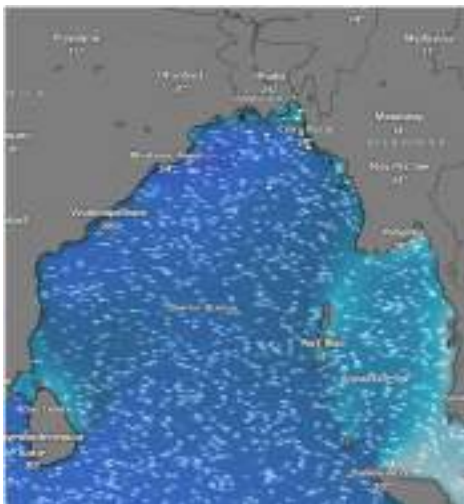
# MARINE WEATHER FORECAST (01 to 08 May 2026)

## ABEAM TO ELEPHANT POINT (21° 11' N, 091° 52' E)



Date	Time	Air Temp (°C)		Sea Surface Temp (°C)	Baro Pressure (mbar)	Win Direction	Wind Spd (kts)		Wave Ht (m)	Sea State	Humidity (%)	Prob of Rain (%)	Amount of Rain (mm)
		Max	Min				Gusting	Avg					
05-05-26 (Tuesday)	0001	29	23	25	1011	SSW	14	10	1.3	4	91	25	0.1
	0600			26	1013	SE	15	09	1.2	3	93	33	0.3
	1200			28	1010	SE	12	08	1.1	3	85	16	0.0
	1800			26	1009	SSW	13	09	1.1	3	88	18	0.0
06-05-26 (Wednesday)	0001	29	23	25	1009	SSW	13	09	1.1	3	90	32	0.3
	0600			26	1010	SSE	17	07	1.0	3	93	37	0.4
	1200			28	1008	SSE	15	06	1.0	3	86	18	0.0
	1800			26	1007	SSW	12	09	0.9	3	87	10	0.0
07-05-26 (Thursday)	0001	30	24	25	1008	SW	10	06	0.9	3	91	59	0.6
	0600			26	1009	SE	11	07	0.9	3	96	43	0.5
	1200			28	1007	SSW	10	06	0.9	3	82	15	0.0
	1800			26	1006	W	11	07	0.9	3	85	37	0.4
08-05-26 (Friday)	0001	30	24	25	1008	SW	09	05	0.9	3	92	42	0.4
	0600			26	1009	W	10	06	0.9	3	96	35	0.3
	1200			28	1007	W	09	05	0.9	3	85	20	0.1
	1800			26	1006	SW	11	07	0.9	3	89	51	0.5

05 May 2026



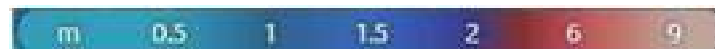
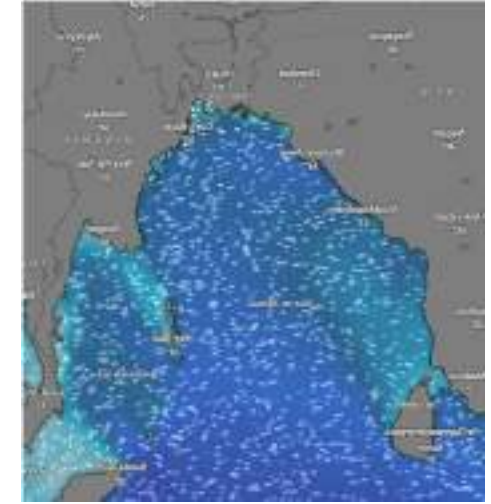
06 May 2026



07 May 2026



08 May 2026



Significant wave height (m)



# MARINE WEATHER FORECAST (01 to 08 May 2026)

## ABEAM TO ST. MARTIN'S LIGHT HOUSE (20° 37' N, 092° 08' E)

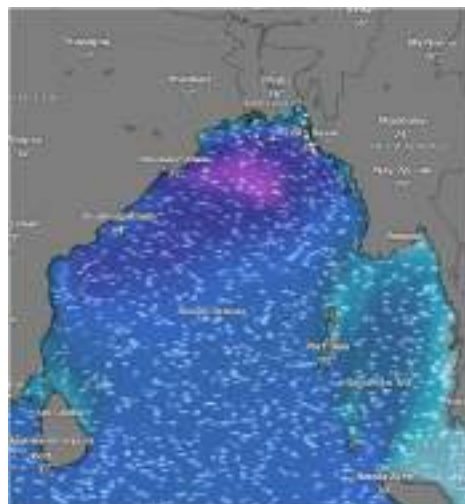


Date	Time	AirTemp (°C)		Sea Surface Temp (°C)	Baro Pressure (mbar)	Wind Direction	Wind Spd (kts)		Wave Ht (m)	Sea State	Humidity (%)	Prob of Rain (%)	Amount of Rain (mm)
		Max	Min				Gusting	Avg					
01-05-26 (Friday)	0001	29	23	25	1009	W	15	11	1.2	3	91	75	2.5
	0600			26	1010	SSE	14	10	1.2	3	93	49	0.5
	1200			28	1008	SW	13	09	1.4	3	85	42	0.4
	1800			26	1007	SW	11	07	1.3	4	87	75	0.8
02-05-26 (Saturday)	0001	30	24	25	1007	SSE	16	12	1.3	4	92	52	0.6
	0600			26	1008	SSW	22	17	1.5	4	93	20	0.0
	1200			28	1006	SE	15	11	1.7	4	89	43	0.5
	1800			26	1005	SSW	13	09	1.7	4	95	64	0.7
03-05-26 (Sunday)	0001	30	24	25	1007	SE	15	11	1.7	4	91	39	0.4
	0600			26	1008	SSE	18	14	1.6	4	90	77	2.3
	1200			28	1006	SSE	12	08	1.7	4	89	90	3.5
	1800			26	1005	E	14	10	1.7	4	91	34	0.3
04-05-26 (Monday)	0001	29	23	25	1010	S	13	09	1.6	4	90	41	0.4
	0600			26	1011	SSE	14	10	1.4	4	92	61	0.6
	1200			28	1009	SSE	13	08	1.4	4	86	24	0.1
	1800			26	1008	SSW	10	06	1.3	4	87	34	0.3

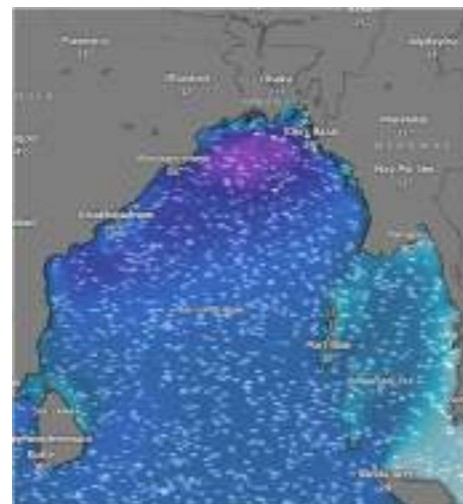
01 May 2026



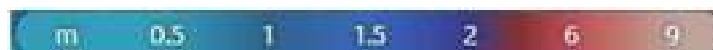
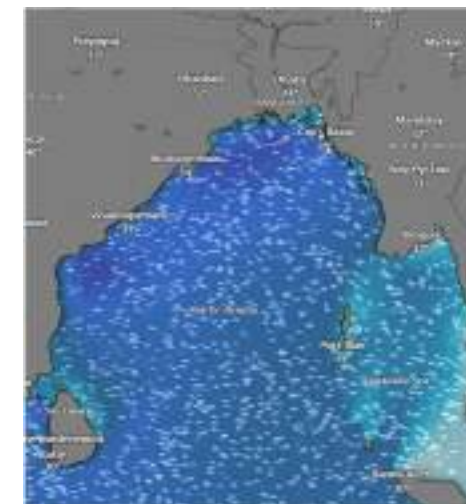
02 May 2026



03 May 2026



04 May 2026



Significant wave height (m)

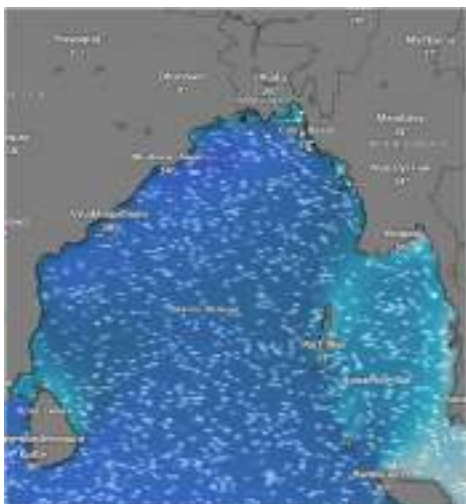


## MARINE WEATHER FORECAST (01 to 08 May 2026) ABEAM TO ST. MARTIN'S LIGHT HOUSE (20° 37' N, 092° 08' E)



Date	Time	Air Temp (°C)		Sea Surface Temp (°C)	Baro Pressure (mbar)	Wind Direction	Wind Spd (kts)		Wave Ht (m)	Sea State	Humidity (%)	Prob of Rain (%)	Amount of Rain (mm)
		Max	Min				Gusting	Avg					
05-05-26 (Tuesday)	0001	29	23	25	1011	SSW	18	11	1.3	4	92	24	0.1
	0600			26	1013	SSE	15	08	1.2	3	93	33	0.3
	1200			28	1010	S	12	05	1.1	3	79	16	0.0
	1800			26	1009	SE	14	10	1.1	3	86	18	0.0
06-05-26 (Wednesday)	0001	29	23	25	1009	SW	11	07	1.0	3	92	32	0.3
	0600			26	1010	S	13	09	1.0	3	93	37	0.4
	1200			28	1008	E	10	05	1.0	3	81	18	0.0
	1800			26	1007	W	11	06	0.9	3	85	10	0.0
07-05-26 (Thursday)	0001	30	24	25	1008	W	11	07	1.0	3	92	59	0.6
	0600			26	1009	W	09	05	1.0	3	93	43	0.5
	1200			28	1007	SW	10	06	0.9	3	80	15	0.0
	1800			26	1006	W	13	09	0.9	3	87	37	0.4
08-05-26 (Friday)	0001	30	24	25	1008	W	11	07	1.0	3	90	42	0.4
	0600			26	1009	W	10	06	1.0	3	91	36	0.4
	1200			28	1007	W	11	07	1.0	3	85	20	0.0
	1800			26	1006	W	13	09	1.0	3	88	29	0.3

05 May 2026



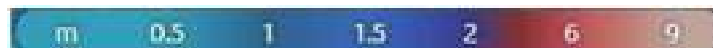
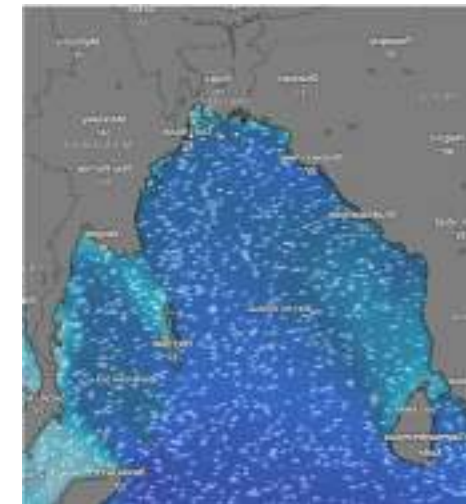
06 May 2026



07 May 2026



08 May 2026



Significant wave height (m)



# MARINE WEATHER FORECAST (01 to 08 May 2026)



## PAYRA FAIRWAY (21° 22' N, 090° 6' E)

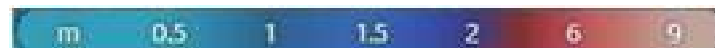
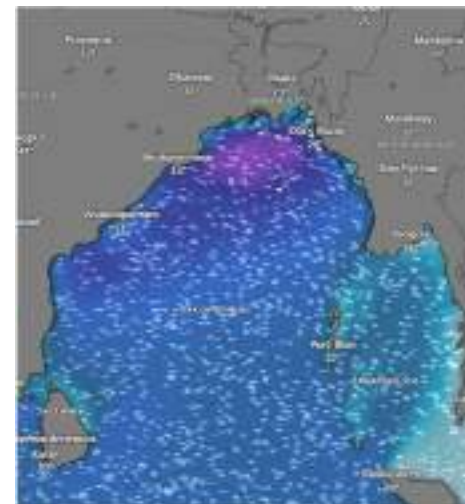
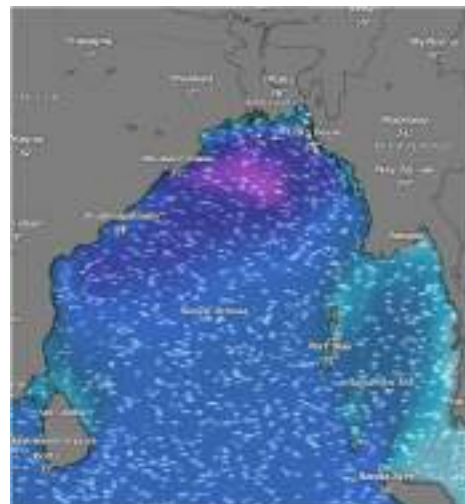
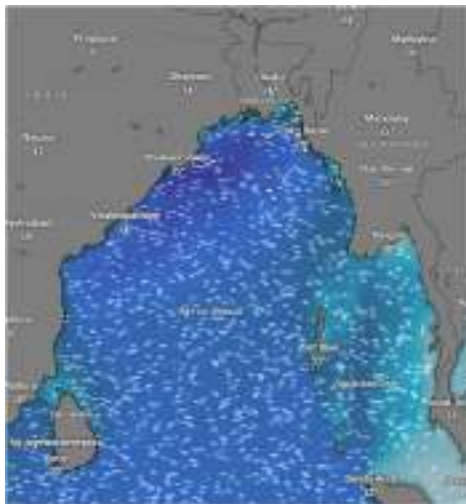
Date	Time	Air Temp (°C)		Sea Surface Temp (°C)	Baro Pressure (mbar)	Wind Direction	Wind Spd (kts)		Wave Ht (m)	Sea State	Humidity (%)	Prob of Rain (%)	Amount of Rain (mm)
		Max	Min				Gusting	Avg					
01-05-26 (Friday)	0001	29	23	25	1009	SSE	13	09	1.6	4	91	52	0.5
	0600			26	1010	SSW	12	08	1.6	4	95	59	0.6
	1200			28	1008	SSW	20	15	1.5	4	86	74	0.7
	1800			26	1007	SSW	21	16	1.5	4	90	24	0.4
02-05-26 (Saturday)	0001	30	24	25	1007	SW	26	20	1.8	4	91	91	2.5
	0600			26	1008	W	20	15	2.1	4	93	46	0.5
	1200			28	1006	S	13	09	2.0	4	85	65	0.7
	1800			26	1005	SSW	26	20	2.0	4	92	43	0.5
03-05-26 (Sunday)	0001	30	24	25	1007	SSW	22	16	2.1	4	90	35	0.4
	0600			26	1008	SSW	20	15	2.2	4	91	98	2.5
	1200			28	1006	SW	27	20	2.0	4	88	95	3.5
	1800			26	1005	SSW	16	12	1.8	4	93	45	0.6
04-05-26 (Monday)	0001	29	23	25	1010	S	26	20	1.9	4	92	50	0.5
	0600			26	1011	S	22	16	1.8	4	95	73	0.8
	1200			28	1009	SSW	16	12	1.7	4	88	65	0.7
	1800			26	1008	SSW	15	11	1.6	4	86	17	0.0

01 May 2026

02 May 2026

03 May 2026

04 May 2026



Significant wave height (m)



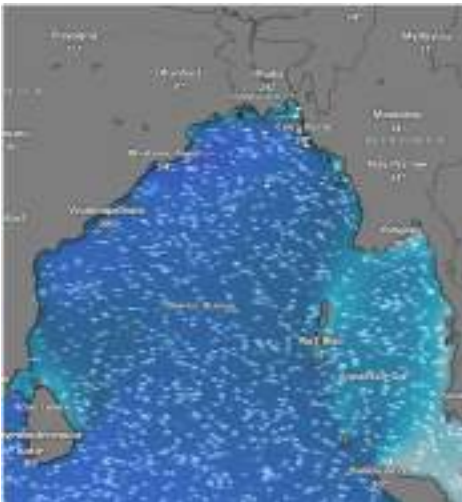
# MARINE WEATHER FORECAST (01 to 08 May 2026)



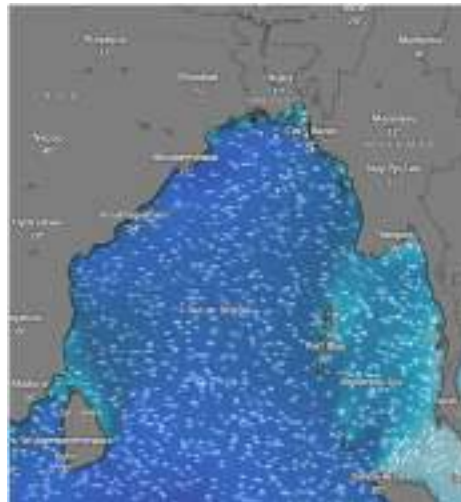
## PAYRA FAIRWAY (21° 22' N, 090° 6' E)

Date	Time	Air Temp (°C)		Sea Surface Temp (°C)	Baro Pressure (mbar)	Wind Direction	Wind Spd (kts)		Wae Ht (m)	Sea State	Humidity (%)	Prob of Rain (%)	Amount of Rain (mm)
		Max	Min				Gusting	Avg					
05-05-26 (Tuesday)	0001	29	23	25	1011	SE	29	19	1.8	4	92	24	0.1
	0600			26	1013	SW	27	12	1.9	4	93	33	0.3
	1200			28	1010	SW	19	14	1.5	4	79	16	0.0
	1800			26	1009	SSW	20	10	1.5	4	86	18	0.0
06-05-26 (Wednesday)	0001	29	23	25	1009	SW	16	12	1.3	4	92	32	0.3
	0600			26	1010	SW	27	19	1.2	4	93	37	0.4
	1200			28	1008	S	14	10	1.2	4	81	18	0.0
	1800			26	1007	SW	15	11	1.1	4	85	10	0.0
07-05-26 (Thursday)	0001	30	24	25	1008	SSW	13	09	1.1	4	92	59	0.6
	0600			26	1009	SSW	15	11	1.0	4	93	43	0.5
	1200			28	1007	SSE	10	06	1.0	4	80	15	0.0
	1800			26	1006	SW	12	08	1.0	4	87	37	0.4
08-05-26 (Friday)	0001	30	24	25	1008	SSW	13	09	1.0	4	90	39	0.4
	0600			26	1009	W	09	05	1.0	4	92	46	0.5
	1200			28	1007	SE	10	06	1.0	4	85	26	0.1
	1800			26	1006	SSW	11	07	1.0	4	88	37	0.4

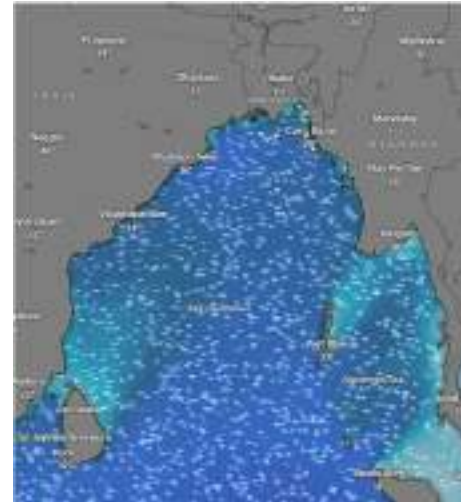
05 May 2026



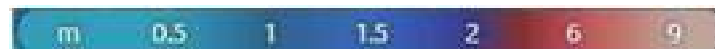
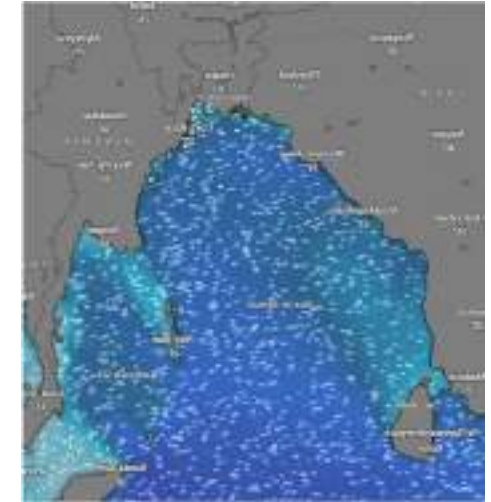
06 May 2026



07 May 2026



08 May 2026



Significant wave height (m)



# MARINE WEATHER FORECAST (01 to 08 May 2026)

## MONGLA FAIRWAY (21° 26' N, 089° 34' E)



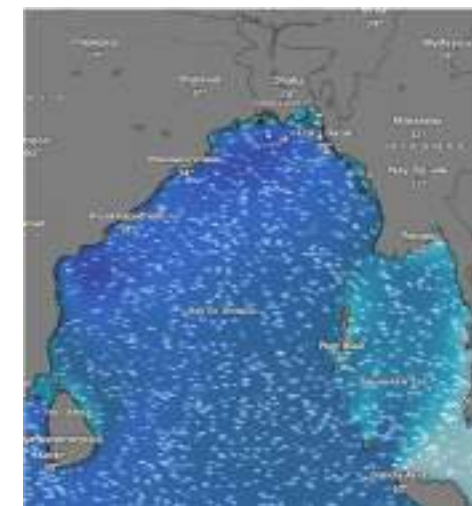
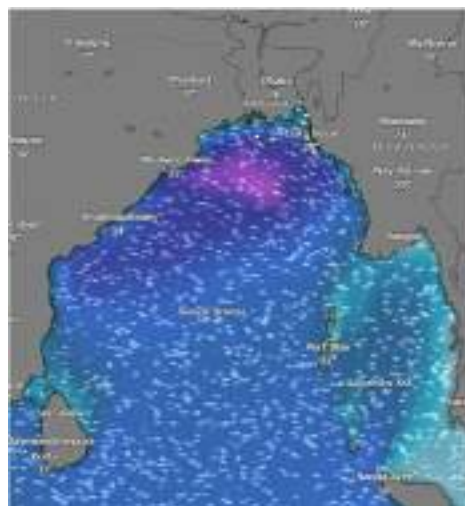
Date	Time	Air Temp (°C)		Sea Surface Temp (°C)	Baro Pressure (mbar)	Wind Direction	Wind Spd (kts)		Wave Ht (m)	Sea State	Humidity (%)	Prob of Rain (%)	Amount of Rain (mm)
		Max	Min				Gusting	Avg					
01-05-26 (Friday)	0001	29	23	25	1009	SW	12	08	1.7	4	92	57	0.5
	0600			26	1010	SW	09	05	1.6	4	95	55	0.6
	1200			28	1008	SSW	17	13	1.5	4	86	76	0.7
	1800			26	1007	SSW	26	18	1.6	4	90	22	0.4
02-05-26 (Saturday)	0001	30	24	25	1007	SSW	26	18	1.8	4	93	94	2.5
	0600			26	1008	W	25	17	2.2	4	95	45	0.5
	1200			28	1006	S	17	13	2.0	4	87	66	0.7
	1800			26	1005	SSW	22	16	1.9	4	91	45	0.5
03-05-26 (Sunday)	0001	30	24	25	1007	SSW	27	20	2.3	4	90	34	0.4
	0600			26	1008	SW	26	19	2.2	4	91	92	2.5
	1200			28	1006	S	18	14	2.1	4	88	96	3.5
	1800			26	1005	SSW	15	11	2.0	4	93	43	0.6
04-05-26 (Monday)	0001	29	23	25	1010	SSW	21	17	1.9	4	90	52	0.5
	0600			26	1011	SSW	18	14	1.8	4	95	74	0.8
	1200			28	1009	SW	20	15	1.8	4	86	69	0.7
	1800			26	1008	S	18	14	1.6	4	88	15	0.0

01 May 2026

02 May 2026

03 May 2026

04 May 2026



Significant wave height (m)



# MARINE WEATHER FORECAST (01 to 08 May 2026)

## MONGLA FAIRWAY (21° 26' N, 089° 34' E)



Date	Time	Air Temp (°C)		Sea Surface Temp (°C)	Baro Pressure (mbar)	Wind Direction	Wind Spd (kts)		Wave Ht (m)	Sea State	Humidity (%)	Prob of Rain (%)	Amount of Rain (mm)
		Max	Min				Gusting	Avg					
05-05-26 (Tuesday)	0001	29	23	25	1011	SW	28	21	2.0	4	92	24	0.1
	0600			26	1013	SSW	29	15	1.8	4	93	33	0.3
	1200			28	1010	SSW	20	14	1.7	4	79	16	0.0
	1800			26	1009	SSW	23	16	1.7	4	86	18	0.0
06-05-26 (Wednesday)	0001	29	23	25	1009	SW	14	10	1.6	4	92	32	0.3
	0600			26	1010	SSW	26	18	1.5	4	93	37	0.4
	1200			28	1008	SSW	17	13	1.3	4	81	18	0.0
	1800			26	1007	SSW	16	12	1.4	4	85	10	0.0
07-05-26 (Thursday)	0001	30	24	25	1008	SW	14	10	1.1	3	92	59	0.6
	0600			26	1009	SW	15	11	1.1	3	93	43	0.5
	1200			28	1007	E	10	06	1.0	3	80	15	0.0
	1800			26	1006	SW	14	10	1.0	3	87	37	0.4
08-05-26 (Friday)	0001	30	24	25	1008	S	13	09	1.0	3	90	53	0.5
	0600			26	1009	SW	12	08	1.0	3	94	45	0.5
	1200			28	1007	SW	08	05	1.0	3	85	21	0.1
	1800			26	1006	S	11	07	1.1	3	88	34	0.3

05 May 2026



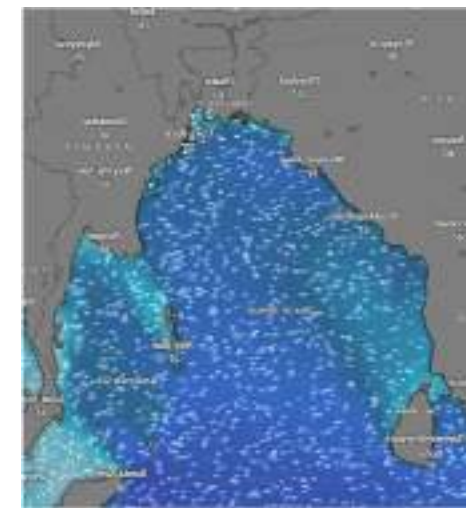
06 May 2026



07 May 2026



08 May 2026



Significant wave height (m)



# MARINE WEATHER FORECAST (01 to 08 May 2026)

## OUTER EEZ (18° 48' N, 090° 30' E)



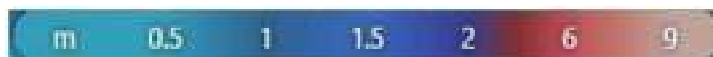
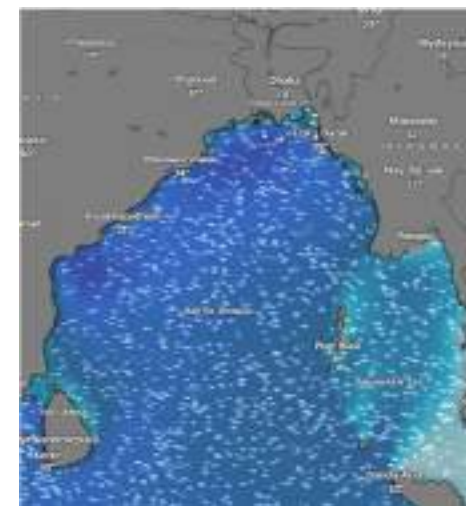
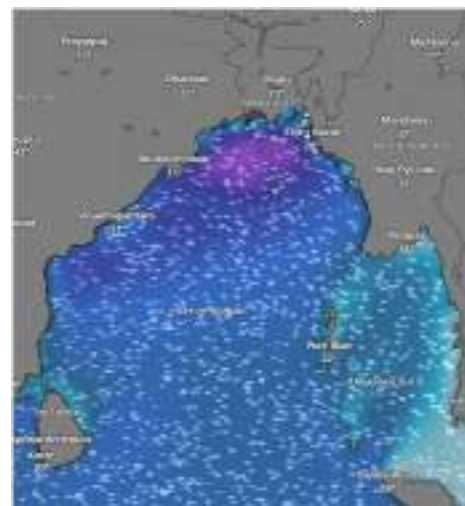
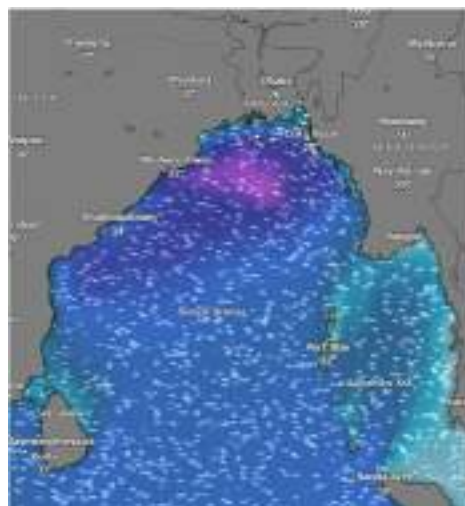
Date	Time	Air Temp (°C)		Sea Surface Temp (°C)	Baro Pressure (mbar)	Wind Direction	Wind Spd (kts)		Wave Ht (m)	Sea State	Humidity (%)	Prob of Rain (%)	Amount of Rain (mm)
		Max	Min				Gusting	Avg					
01-05-26 (Friday)	0001	29	23	25	1009	SSW	16	12	1.6	4	91	58	0.5
	0600			26	1010	SSW	17	13	1.6	4	96	57	0.6
	1200			28	1008	SW	25	18	1.6	4	75	76	0.7
	1800			26	1007	SW	16	12	1.5	4	88	25	0.4
02-05-26 (Saturday)	0001	30	24	25	1007	SSW	26	19	1.6	4	90	94	2.5
	0600			26	1008	SSW	27	20	2.1	4	91	45	0.5
	1200			28	1006	SW	26	18	2.3	4	74	66	0.7
	1800			26	1005	SSW	20	15	2.1	4	86	45	0.5
03-05-26 (Sunday)	0001	29	23	25	1007	SW	22	16	2.0	4	90	34	0.4
	0600			26	1008	SSW	27	20	2.1	4	92	95	2.5
	1200			28	1006	SSW	13	09	2.0	4	75	96	3.5
	1800			26	1005	SSW	22	16	1.8	4	87	48	0.6
04-05-26 (Monday)	0001	29	23	25	1010	SW	11	07	1.7	4	89	32	0.2
	0600			26	1011	SSW	22	16	1.7	4	91	28	0.1
	1200			28	1009	SSW	15	11	1.5	4	75	22	0.1
	1800			26	1008	SSW	12	08	1.5	4	88	25	0.1

01 May 2026

02 May 2026

03 May 2026

04 May 2026



Significant wave height (m)



# MARINE WEATHER FORECAST (01 to 08 May 2026)

## OUTER EEZ (18° 48' N, 090° 30' E)



Date	Time	Air Temp (°C)		Sea Surface Temp (°C)	Baro Pressure (mbar)	Wind Direction	Wind Spd (kts)		Wave Ht (m)	Sea State	Humidity (%)	Prob of Rain (%)	Amount of Rain (mm)
		Max	Min				Gusting	Avg					
05-05-26 (Tuesday)	0001	29	23	25	1011	SSW	22	14	1.5	4	90	40	0.4
	0600			26	1013	W	20	16	1.5	4	92	52	0.5
	1200			28	1010	SW	21	11	1.4	4	83	24	0.1
	1800			26	1009	SSW	15	10	1.4	4	86	34	0.3
06-05-26 (Wednesday)	0001	29	23	25	1009	SW	12	08	1.2	3	89	12	0.0
	0600			26	1010	SSW	13	09	1.2	3	90	24	0.1
	1200			28	1008	SW	14	10	1.1	3	74	10	0.0
	1800			26	1007	SW	13	09	1.2	3	87	20	0.0
07-05-26 (Thursday)	0001	30	24	25	1008	SW	13	09	1.1	3	90	12	0.0
	0600			26	1009	W	11	07	1.0	3	93	24	0.1
	1200			28	1007	W	09	05	1.1	3	82	10	0.0
	1800			26	1006	SW	12	08	1.1	3	87	20	0.0
08-05-26 (Friday)	0001	30	24	25	1008	SW	14	10	1.2	3	90	32	0.3
	0600			26	1009	W	13	09	1.2	3	92	22	0.0
	1200			28	1007	W	11	07	1.2	3	85	15	0.0
	1800			26	1006	W	12	08	1.2	3	89	22	0.0

05 May 2026



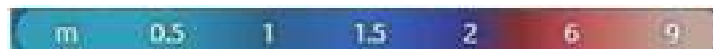
06 May 2026



07 May 2026



08 May 2026



Significant wave height (m)



## PREDICTED SURFACE PRESSURE FORECAST (01 to 07 May 2026)



01 May 2026



02 May 2026



03 May 2026



04 May 2026



05 May 2026



06 May 2026



07 May 2026

